

REVIEW ARTICLE OPEN

Targeting muscle stem cell intrinsic defects to treat Duchenne muscular dystrophy

Nicolas A Dumont^{1,2,3,4} and Michael A Rudnicki^{1,2}

Duchenne muscular dystrophy (DMD) is a genetic disease characterised by skeletal muscle degeneration and progressive muscle wasting, which is caused by loss-of-function mutations in the *DMD* gene that encodes for the protein dystrophin. Dystrophin has critical roles in myofiber stability and integrity by connecting the actin cytoskeleton to the extracellular matrix. Absence of dystrophin leads to myofiber fragility and contributes to skeletal muscle degeneration in DMD patients, however, accumulating evidence also indicate that muscle stem cells (also known as satellite cells) are defective in dystrophic muscles, which leads to impaired muscle regeneration. Our recent work demonstrated that dystrophin is expressed in activated satellite cells, where it regulates the establishment of satellite cell polarity and asymmetric cell division. These findings indicate that dystrophin-deficient satellite cells have intrinsic dysfunctions that contribute to muscle wasting and progression of the disease. This discovery suggests that satellite cells could be targeted to treat DMD. Here we discuss how these new findings affect regenerative therapies for muscular dystrophies. Therapies targeting satellite cells hold great potential and could have long-term efficiency owing to the high self-renewal ability of these cells.

npj Regenerative Medicine (2016) **1**, 16006; doi:10.1038/npjregenmed.2016.6; published online 9 June 2016

INTRODUCTION

Duchenne muscular dystrophy (DMD) is an X-linked recessive disease that affects ~1 in 3,600 boys that is characterised by progressive debilitating muscle weakness resulting in gradual ambulatory disability, respiratory dysfunction and ultimately premature death in the second to third decade of life.¹ DMD is caused by mutation in the *DMD* gene, which is the largest gene of the human genome that encompasses ~2.2 Mb and encodes for the dystrophin protein.^{2,3} In skeletal muscle, full-length dystrophin is expressed in myofibers where it binds to the actin cytoskeleton with its N-terminal domain and to the dystrophin-associated glycoprotein complex (DGC) at the cell membrane level with its C-terminal domain. In absence of dystrophin, myofibers are unstable and fragile, which causes progressive skeletal muscle degeneration.

Skeletal muscle contains muscle stem cells, named satellite cells, that are the engine of muscle regeneration.⁴ In healthy condition, satellite cells possess a tremendous capacity to regenerate muscles with their ability to proliferate extensively, differentiate and self-renew.⁵ However, in dystrophic muscles, the proliferating capacity of satellite cell is reduced and the overall muscle regeneration is impaired.^{6–12} Satellite cell exhaustion have been suggested to contribute to the reduced regenerative ability.¹³ However, although a decrease in the number of satellite cells is observed during aging of *mdx* or DMD muscles, that number remains equal or higher in dystrophic muscles compared to aged-matched healthy muscles.^{6,14,15}

Pioneer work showed that deletion of *Dag1*, the transmembrane laminin-binding protein of the DGC, specifically in

the myofibers induces a relatively mild degeneration phenotype compared with complete deletion of *Dag1*, i.e., in both the myofibers and the satellite cells.¹⁶ The authors suggested that *Dag1* expression in satellite cells is essential to maintain their regenerative potential and, consequently, inadequate muscle repair caused by *Dag1*-deficiency in satellite cells is an important mechanism affecting the severity of muscular dystrophy.¹⁶ Similar results were obtained by analysing muscle regeneration of mice deficient in *fukutin*, a protein regulating *Dag* glycosylation and function.¹⁷ Conditional deletion of *fukutin* specifically in myofibers using muscle creatine kinase promoter also leads to a mild muscle phenotype compared with the severe muscle wasting observed when *fukutin* is specifically deleted in muscle precursor cells using the *Myf5* promoter.¹⁷

Our recent work demonstrates that dystrophin (as well as other members of the DGC) is expressed in activated satellite cells where it regulates satellite cell fate and myogenesis.¹⁸ Dystrophin and *Dag1* are expressed in a subset of activated satellite cells and are asymmetrically polarised prior to the first cell division. In activated satellite cells, dystrophin and *Dag1* act as scaffolding proteins to which binds the cell polarity effector *Mark2* (also known as *Par1b*). Dystrophin/*Dag1*-*Mark2* interaction promotes the phosphorylation of the cell polarity regulator *Pard3* leading to its asymmetric segregation at the opposite pole of the cell (Figure 1). Asymmetric cell polarity establishment leads to orientation of the mitotic spindle in an apicobasal orientation, which give rise to asymmetric cell division. Asymmetric cell division is a hallmark of stem cells that enables them to generate two cells with different cellular fates, one that remains a stem cell

¹Sprott Center for Stem Cell Research, Ottawa Hospital Research Institute, Regenerative Medicine Program, Ottawa, ON, Canada and ²Department of Cellular and Molecular Medicine, Faculty of Medicine, University of Ottawa, Ottawa, ON, Canada.

Correspondence: MA Rudnicki (mrudnicki@ohri.ca)

³Current address: Ste-Justine Hospital research center, Musculoskeletal Diseases and Rehabilitation Department, Montreal, QC, Canada, H3T 1C5.

⁴Current address: Department of rehabilitation, Faculty of Medicine, University of Montreal, Montreal, QC, Canada, H3C 3J7.

Received 2 February 2016; revised 11 April 2016; accepted 13 April 2016

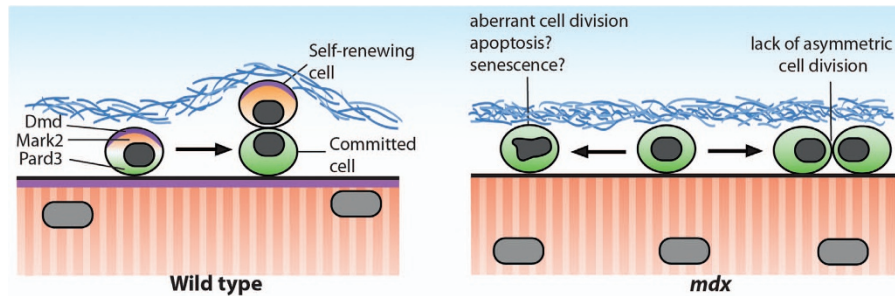


Figure 1. Dystrophin regulation of asymmetric cell division. Schematic micrograph of wild type (left panel) and *mdx* (right panel) dividing satellite cells. In wild-type mice, activated satellite cells express dystrophin that acts as a scaffolding protein for the cell polarity effector Mark2. Mark2 interacts with Pard3 leading to their asymmetric distribution and to asymmetric cell division. Absence of dystrophin in *mdx* mice leads to defect in cell polarity establishment and lack of asymmetric cell division. Impaired cell polarity in dystrophin-deficient satellite cell also increases the proportion of abnormal cell division.

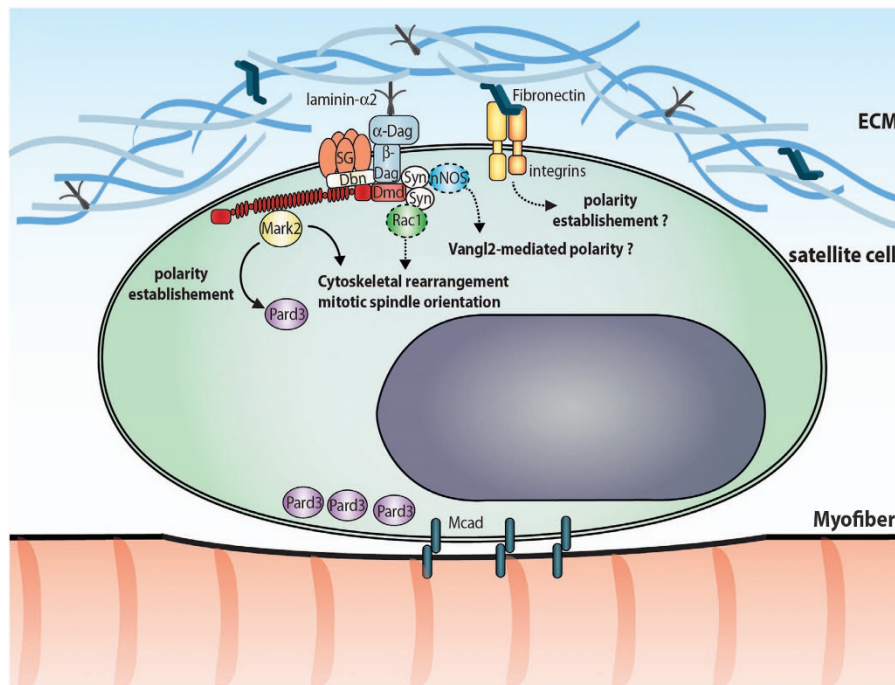


Figure 2. DGC regulation of satellite cell polarity establishment. Schematic micrograph of a satellite cell in its niche. DGC and integrins interact with components of the extracellular matrix leading to their asymmetric distribution on the basal lamina side. Dystrophin and Dag1 interact with Mark2 to establish cell polarity. In myofibers, other DGC components were shown to interact with effectors involved in cell polarity establishment such as Rac1 and nNOS. Whether similar interaction occurs in satellite cells remains to be determined (dashed line). Dag, dystroglycan; Dbn; dystrobrevin; Dmd, dystrophin; Mcad, M-cadherin; SG, sarcoglycan; Syn; syntrophin.

and the other one that becomes a committed progenitor cell. In skeletal muscle, asymmetric cell division enables muscle stem cells to maintain the satellite cell reserve (self-renewal) and simultaneously to contribute to the myogenic progenitor population that is needed for myofiber regeneration. On the other hand, muscle stem cells can also perform symmetric division to expand the stem cell pool.¹⁹ A controlled balanced between symmetric and asymmetric division is crucial to appropriately fulfill the needs of the muscles.

In absence of dystrophin, the cellular polarity of satellite cells is perturbed leading to the loss of asymmetric cell division and to an increase in the number of abnormal cell division. Lack of asymmetric cell division leads to a reduction in the number of myogenic progenitor cells and to impaired muscle regeneration (Figure 1).^{18,20} These findings indicate that there is a cell-autonomous defect in *DMD*-mutant satellite cells, which contributes to the pathogenesis of *DMD*. Understanding the

molecular mechanisms driving satellite cell dysfunctions in dystrophic muscles opens new therapeutic avenues for the treatment of *DMD*. Here we discuss the consequences of these findings on the therapeutic strategies targeting satellite cells as well as potential implications for other diseases.

DGC REGULATION OF CELL SIGNALLING

In myofibers, multiple DGC components were shown to interact with different effectors to regulate intracellular signalling cascades.²¹ For instance, calmodulin was shown to bind to dystrophin and syntrophin to regulate the Akt pathway, while the growth factor receptor-bound protein 2 (Grb2) binds to β -Dag and activates the mitogen-activated protein kinases (MAPK) pathway.²² Microarray data comparing prospectively isolated satellite cells to differentiating myotubes showed that multiple components of the DGC such as dystrophin, syntrophin, Dag1 and

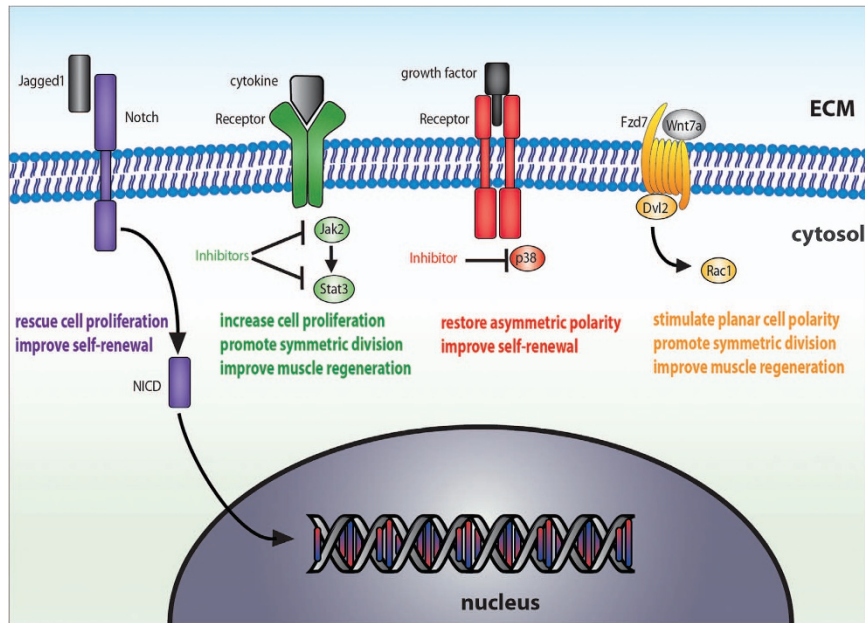


Figure 3. Potential therapeutic targets to improve dystrophin-deficient satellite cell function. Schematic micrograph of a satellite cell membrane. Various signalling pathways are dysregulated in dystrophin-deficient satellite cells. Different therapeutic compounds such as Wnt7a, Notch activators, Jak2/Stat3 inhibitors and p38MAPK inhibitors were shown to rescue satellite cell function and are potential therapeutic targets.

sarcoglycan are expressed in satellite cells as well as in myofibers.¹⁸ Therefore, in addition to its role in the regulation of Mark2 activity, dystrophin and other members of the DGC could potentially activate various signalling cascades regulating satellite cell behaviour (Figure 2).

In myofibers, binding of Dag1 to laminin was shown to cause the recruitment of Rac1 to syntrophin.²³ The small GTPase Rac1 is involved in actin cytoskeleton rearrangement and it is known to interact with the PAR complex to establish mitotic spindle orientation and asymmetric cell division.²⁴ Consistent with the hypothesis that the DGC–Rac1 interaction regulates satellite cell behaviour, it was shown in C2C12 myoblasts that exposure to laminin recruits Rac1 to the DGC, which activates the JNK signalling pathway and increases cell proliferation.²³ Another effector, the neuronal nitric oxide synthase (nNOS), was shown to bind to syntrophin and regulate nitric oxide (NO) production in myofibers.^{21,25} Notably, NO has been demonstrated to have a direct effect on satellite cell proliferation and self-renewal through a Vangl2-dependent noncanonical Wnt pathway.²⁶ NO delivery was also shown to partially rescue satellite cell dysfunction in α -sarcoglycan-null dystrophic mice and to promote muscle regeneration.²⁶ Altogether, these findings suggest that DGC components expressed by the satellite cells interact with multiple signalling effectors and could be involved in the regulation of satellite cell behaviour through additional mechanisms other than Mark2-dependent cell polarity establishment (Figure 2). Understanding how other members of the DGC regulate signalling pathways in satellite cells and whether these functions are dysregulated in DMD could help to develop a range of therapeutic compounds that rescue dysfunctions in *DMD*-mutant satellite cells.

THERAPEUTIC AVENUES

Over the last decades, multiple therapeutic avenues have been explored to treat Duchenne muscular dystrophy, such as cell therapies,²⁷ gene therapies and other pharmacological compounds. Here we discuss therapies that could be used to target cell-autonomous defects in *DMD*-mutant satellite cells.

Gene therapy

Many therapies aiming to restore dystrophin expression such as exon skipping or gene delivery are currently in the preclinical or early clinical phase.²⁸ Despite their great therapeutic potential, gene therapies have led so far to mild dystrophin re-expression in DMD muscles and poor improvement in muscle phenotype owing to multiple technical issues such as lack of specificity, poor delivery and low efficiency. Recently, studies from different groups showed that adeno-associated viruses (AAV) delivery of CRISPR-Cas9 endonucleases coupled with paired guided RNAs can be used to remove the mutated exon 23 in *mdx* mice and restore *Dmd* expression in postnatal muscles.^{29–31} Depending on the delivery method (systemic or local), the level of dystrophin restoration is mild to moderate, but, interestingly, this technique was also shown to restore dystrophin expression into satellite cells, albeit to a lower level.²⁹ AAV gene delivery is inefficient into quiescent satellite cells but its efficiency is increased into proliferating myoblasts.³² Further studies are needed to improve AAV transduction efficiency into satellite cells and, in this regard, the recent identification of the AAV receptor is a step forward in the development of new tools to improve AAV efficacy.³³ Moreover, even with limited efficiency, it was shown that lentiviral-mediated gene delivery of micro-dystrophin into a small proportion of satellite cells can sustain dystrophin expression in myofibers for years.³⁴ Therefore, satellite cells are a primary target to improve long-term efficacy of gene therapy due to their high self-renewal capacity.

In addition to improve long-term engraftment, gene therapies designed to rescue the intrinsic defects of satellite cells could be an alternative approach. For instance, in *fukutin*-deficient dystrophic mice, administration of an AAV vector containing the *fukutin* complementary DNA under the CMV promoter (leading to ubiquitous gene expression) leads to better muscle regeneration compared with the muscle creatine kinase promoter (myofiber specific), indicating that the restoration of *fukutin* expression in satellite cells improve their regenerative potential.¹⁷ However, restoring dystrophin expression in DMD is challenging considering the large size of the *DMD* gene. To circumvent this technical challenge, micro-dystrophin complementary DNA was created to

fit into AAV vectors.³⁵ Micro-dystrophin lacks most of the *DMD* rod domain and generates a truncated dystrophin protein that does not contain the Mark2-binding site (spectrin-like repeats R8–R9 corresponding to exon 26–30 of the *DMD* gene). These micro-dystrophin proteins are able to functionally restore myofibers stability, however, they cannot rescue the polarity defect in dystrophin-deficient satellite cells. Consistent with the important role of the *DMD* domain containing the Mark2-binding site (exon 26–30), analysis of the severity of Becker muscular dystrophy phenotype shows that mutations in the proximal rod domain of *DMD* (exon 10–32) causes a more severe muscle phenotype compared to mutations in the central rod domain (exon 33–45).^{36,37} Therefore, it may be beneficial for the development of micro-dystrophin vectors to include the Mark2 binding site in order to rescue satellite cell intrinsic defects and improving long-term efficacy.

Pharmacological drugs

The finding that dystrophin-deficient satellite cells are intrinsically defective suggest that therapies enhancing satellite cell myogenic capacity have the potential to improve muscle regeneration and ameliorate the quality of life of DMD patients (Figure 3). Consistent with this hypothesis, overexpression of Jagged1, a Notch ligand, was shown to improve muscle regeneration and function in dystrophic dogs, a mechanism that is partially mediated by increased myogenic cell proliferation.³⁸ Recent case studies also showed that some DMD patients have the remarkable capacity to maintain their muscle function and walking ability despite the complete absence of dystrophin, however it remains unknown whether this effect is caused by overexpression in signalling pathways, such as Notch, that enhance satellite cell function.^{39,40} The Notch pathway is also involved in asymmetric cell division as demonstrated by the asymmetric inheritance of Notch ligand Delta-1 and the Notch interacting protein Numb in the committed daughter cell following asymmetric satellite cell division, but it remains to be determined whether Notch overexpression rescues the asymmetric polarity deficit observed in dystrophin-deficient satellite cells.^{19,41} Consistent with the positive role of Notch/Numb on satellite cell function, it was shown that inactivation of Numb in *mdx* mice promotes senescence of myogenic cells and exacerbates the dystrophic muscle phenotype.⁴² Therefore, the Notch pathway is an interesting target to improve satellite cell function, however, constitutive activation of the Notch pathway specifically in *mdx* satellite cells through Notch intracellular domain overexpression was shown to restore satellite cell self-renewal, but it did not translate into better regenerative potential.⁶ This discrepancy can be explained by the fact that overexpression of Notch pathway promotes self-renewal, but represses satellite cell myogenic progression, a process that is already insufficient in *mdx* satellite cells.¹⁸ Therefore, Notch is a potential therapeutic target to rescue satellite cell proliferation and self-renewal, however, it needs to be transiently activated and/or used in combination with other compounds promoting myogenic progression.

Various other signalling pathways involved in cell polarity establishment were also shown to be dysregulated in pathological conditions and could be targeted to rescue satellite cell functions (Figure 3). For instance, the Jak/Stat signalling pathway regulates asymmetric cell division and the generation of myogenic progenitors, and its activity is chronically upregulated in satellite cell during aging.^{43,44} Notably, the use of Stat3 inhibitors partially rescues satellite cell proliferation and muscle regeneration in dystrophic muscles.⁴⁴ Another signalling pathway, the p38MAPK pathway was shown to be involved in the regulation of satellite cell asymmetric division.⁴⁵ In aged muscles, p38MAPK signalling pathway is chronically upregulated in satellite cells and p38MAPK inhibitor was shown to partially restore the establishment of

asymmetric cell polarity and improve self-renewal of satellite cells.⁴⁶ p38MAPK is also aberrantly upregulated in regenerating *mdx* muscle and pharmacological inhibition of p38MAPK in dystrophic mice was shown to improve muscle phenotype.^{47,48} However, the exact effect of p38MAPK inhibitors on dystrophin-deficient satellite cells remains to be determined.

The potential of biological molecules acting on satellite cell polarity should be evaluated as therapeutic approaches to restore dystrophin-deficient satellite cell function (Figure 3). For instance, Wnt7a is known to stimulate the planar cell polarity pathway through its interaction with Fzd7 receptor, which promotes satellite stem cell expansion through symmetric cell division.^{49,50} Noticeably, Wnt7a injection into the TA muscle of *mdx* mice was shown to increase the number of activated satellite cells (Pax7+/MyoD+), myofiber size and muscle force.⁵¹ Notably, a truncated variant containing only the C-terminal portion of Wnt7a was shown to retain its full biological activity and has enhanced dispersion compared with full-length Wnt7a, which is highly relevant for the development of therapeutic drugs.⁵² Another factor, the granulocyte-colony stimulating factor (G-CSF) receptor is asymmetrically segregated during asymmetric satellite cell division and treatment with G-CSF was shown to improve muscle regeneration in dystrophic mice.⁵³ Altogether, these results suggest that alternative mechanisms exist to restore satellite cell function with the lack of dystrophin. However, whether the positive effects of Wnt7a or G-CSF on dystrophic muscle regeneration are mediated by the reestablishment of satellite cell polarity remained to be determined.

Various pharmaceutical components have the potential to improve the myogenic potential of dystrophin-deficient satellite cells by rescuing asymmetric division or by promoting alternate cell polarity establishment that rescues aberrant cell division. Many of these drugs are already approved for the treatment of different diseases, however, systemic delivery of these compounds is likely to have off-target effects and a cost-benefits analysis should be assessed. Moreover, some signalling pathways affected by these drugs are also important for myogenic progression and should be only transiently targeted. Nonetheless, these new findings indicate that satellite cells are an important therapeutic target that could improve muscle regeneration and preserve muscle function over time in DMD patients (Figure 3).

IMPLICATIONS ON VARIOUS DISEASES

Other muscular dystrophies

Muscular dystrophies (MDs) are a group of heterogeneous diseases (>30 different types of MDs) that are characterised by muscle weakness and dysfunction, but that are caused by different mutations in genes that encode for various proteins. Many mutations affect genes that encode for proteins interacting, directly or indirectly, with the DGC, such as Dag1, apha7-integrin (*itga7*), fukutin, Large, laminin and so on.⁵⁴ Similar to what was observed in dystrophin-deficient satellite cells, these mutations could lead to intrinsic defects in satellite cell behavior. For instance, deletion of *Dag1* in satellite cells was previously suggested to impair their regenerative potential.¹⁶ Conditional deletion of *fukutin*, which is important for Dag1 glycosylation and function, under the control of the *Myf5* promoter was demonstrated to impair satellite cell proliferation, differentiation and skeletal muscle regeneration.^{17,55} Likewise, deletion of *Large*, which encodes for another glycosyltransferase that glycosylates Dag1, was shown to impair satellite cell proliferation *in situ*, however, when the satellite cells are removed from their niche and cultured *in vitro* the proliferation capacity is restored.⁵⁶ A similar inconsistency between *in situ* and *in vitro* results was also observed in *mdx* satellite cells, where the decrease in satellite cell proliferation observed on isolated myofiber culture is not detectable when primary myoblasts are cultured out

of their niche in a dish.¹⁸ These results suggest that the interaction of the DGC with its microenvironment is important *in situ* for cell polarity establishment and cell division, however, this interaction is not needed for cell division *in vitro* where there is a lack of polarity cues from the microenvironment. This hypothesis is supported by the fact that the expression of the DGC components is lost when primary myoblasts are cultured *in vitro*¹⁸ together with their ability to perform asymmetric cell division.⁵⁷

The DGC complex was also shown by proximity ligation assay to physically interact in myofibers and in satellite cells with itga7, another laminin-binding protein.¹⁸ Muscle deficient in itga7 shows classical symptoms of muscular dystrophy.⁵⁸ Double knockout of itga7 and dystrophin/Dag1 strongly increases the regeneration deficit suggesting that these two laminin-binding proteins have complementary roles.⁵⁹ Similar to dystrophin-deficient satellite cells, absence of itga7 leads to a strong reduction in satellite cell proliferation and differentiation.⁶⁰ Whether integrins regulate cell polarity establishment in satellite cells as it does in other stem cell types remained to be determined.⁶¹

Utrophin is a gene homologous to the dystrophin gene (although considerably shorter in length) with highly conserved sequence at the N-terminal and C-terminal ends, but with less similarities at the rod domain.⁶² Utrophin is widely expressed in various tissues, but its expression in healthy adult skeletal muscle is restricted at the neuromuscular and myotendinous junctions. In dystrophin-deficient muscles, utrophin expression is also detectable in the myofibers; and mice deficient for both dystrophin and utrophin display a worst muscle phenotype, suggesting that these two proteins have complementary functions.^{63,64} Furthermore, overexpression of utrophin in *mdx* mice reduces the dystrophic phenotype.^{65,66} It is unknown whether utrophin is expressed in satellite cells, however, it would be interesting to determine since utrophin also possesses the binding site for Mark2.⁶⁷ Notably, it was shown that satellite cells from mice double knockout for dystrophin and utrophin exhibit proliferation and differentiation defects stronger than in *mdx* mice, however, it is unclear whether this defect is cell autonomous.⁶⁸

Altogether, these findings indicate that interaction of satellite cells with their microenvironment provides critical feedbacks for the establishment of cell polarity and mutations in genes that encode for proteins of the DGC do not only lead to myofiber fragility, but also to intrinsic defects in satellite cells in a variety of MDs.

Stem cells in other tissues

The *DMD* gene encodes for different isoforms of dystrophin generated by different promoters or by alternative splicing. These different dystrophin protein (Dp) isoforms are classified based on their size in kDa, i.e., Dp427, Dp260, Dp140, Dp116, Dp71 and Dp40. Some isoforms of dystrophin are ubiquitous such as Dp71, whereas others are tissue-specific such as Dp427 (skeletal muscle, brain and heart), Dp260 (retina, brain and heart), Dp140 (central nervous system and kidney) and Dp116 (Schwann cells). The point mutation in *mdx* mice is located at exon 23 leading to the lack of full-length dystrophin (Dp427) but it does not affect the other isoforms.^{69–71}

Expression of dystrophin in various tissues suggests that it could regulate polarity establishment and asymmetric division in stem cells from other tissues. For instance, expression of Dag1 was shown to be important to drive cell polarity establishment in epithelial cells.⁷² Impaired stem cell function could be partially responsible for other symptoms observed in DMD patients. For example, DMD patients and *mdx* mice have higher prevalence of cognitive impairment with disorganized central nervous system architecture and reduced number of neurons, a phenotype that is worsened by the absence of the Dp140 isoform.^{73,74} Brain-specific deletion of *Dag1* using various Cre drivers leads to brain

abnormality partially caused by reduced laminin-binding ability and neuronal migration errors.⁷⁵ Furthermore, asymmetric division of neuroblasts is critical to generate the ganglion mother cell that will give rise to neurons and it could be hypothesized that dystrophin/DGC has a role to play in the regulation of neuroblast asymmetric cell division that is similar to what is observed in satellite cells. Therefore, intrinsic defects in polarity establishment and asymmetric cell division should be evaluated in stem cells from tissues other than skeletal muscles such as brain and retina.

Rhabdomyosarcoma

Mutations in the *DMD* gene have also been associated with higher incidence of various mesenchymal tumours, such as gastrointestinal stromal tumour, rhabdomyosarcoma and leiomyosarcoma.^{76,77} Dystrophin re-expression with mini-dystrophin vector reduced the invasiveness and the migration of myogenic sarcoma cells, which demonstrates that dystrophin has a tumour suppressive effect.⁷⁶ Notably, mutations associated with myogenic cancers lead to deletion of the Dp427 dystrophin protein but preserved the Dp71 isoform, suggesting that Dp71 supports tumour formation and that expression of full-length dystrophin is required to preserve the tumour-suppressive effect.⁷⁶ Consistent with these results, our findings indicate that absence of full-length dystrophin in satellite cells impairs asymmetric cell division,¹⁸ which has been related to formation of tumours in different tissues.⁷⁸ Dystrophin-deficient satellite cells also display abnormal division patterns, which is consistent with previous studies showing that myoblasts isolated from *mdx* mice or dystrophic patients and cultured *in vitro* have higher proportion of cancer-like aberrations such as somatic aneuploidy and DNA damage response.⁷⁷ Altogether, these results suggest that regulation of cell polarity by dystrophin is a common mechanism that is dysregulated both in DMD and in myogenic tumour.

CONCLUSION

The findings that dystrophin-deficient satellite cells are intrinsically defective in DMD patients indicate that they could be targeted by therapeutic compounds. Drugs aiming to restore polarity and proper mitotic division could be used as part of a global therapy for DMD, which could include other treatments such as anti-inflammatory and anti-fibrosis drugs.⁷⁹ A combined therapeutic approach that improves satellite cell function in DMD patients could transform this severely debilitating and lethal disease into a manageable chronic condition. Moreover, owing to their high self-renewal capacity, rescuing satellite cell dysfunction could also be beneficial for gene therapies and increase their long-term efficacy.

ACKNOWLEDGEMENTS

We thank Yu Xin Wang for careful reading of the manuscript. N.A.D. is supported by a Postdoctoral Fellowship from the Canadian Institutes of Health Research (CIHR). M.A.R. holds the Canada Research Chair in Molecular Genetics. These studies were carried out with support from grants to M.A.R. from the US National Institutes for Health (grant no. RO1AR044031), the CIHR (grant no. MOP-12080 and MOP-81288), the E-Rare-2 program from the CIHR and Muscular Dystrophy Canada (grant no. ERA-132935), the Muscular Dystrophy Association, the Stem Cell Network and the Ministry of Research and Innovation (MRI), Government of Ontario (grant no. ORF-RE05-084).

CONTRIBUTIONS

N.A.D. wrote the manuscript and created the figures. M.A.R. wrote the manuscript and provided financial support.

COMPETING INTERESTS

The authors declare no conflict of interest.

REFERENCES

- Blake, D. J., Weir, A., Newey, S. E. & Davies, K. E. Function and genetics of dystrophin and dystrophin-related proteins in muscle. *Physiol. Rev.* **82**, 291–329 (2002).
- Koenig, M. *et al.* Complete cloning of the duchenne muscular dystrophy (DMD) cDNA and preliminary genomic organization of the DMD gene in normal and affected individuals. *Cell* **50**, 509–517 (1987).
- Davies, K. E. *et al.* Mild and severe muscular dystrophy associated with deletions in Xp21 of the human X chromosome. *J. Med. Genet.* **25**, 9–13 (1988).
- Dumont, N. A., Bentzinger, C. F., Sincennes, M.-C. & Rudnicki, M. A. Satellite cells and skeletal muscle regeneration. *comprehensive physiology.* *Compr. Physiol.* **5**, 1027–1059 (1988).
- Dumont, N. A., Wang, Y. X. & Rudnicki, M. A. Intrinsic and extrinsic mechanisms regulating satellite cell function. *Development* **142**, 1572–1581 (2015).
- Jiang, C. *et al.* Notch signaling deficiency underlies age-dependent depletion of satellite cells in muscular dystrophy. *Dis. Model. Mech.* **7**, 997–1004 (2014).
- Irintchev, A., Zweyer, M. & Wernig, A. Impaired functional and structural recovery after muscle injury in dystrophic mdx mice. *Neuromuscul. Disord.* **7**, 117–125 (1997).
- Reimann, J., Irintchev, A. & Wernig, A. Regenerative capacity and the number of satellite cells in soleus muscles of normal and mdx mice. *Neuromuscul. Disord.* **10**, 276–282 (2000).
- Blau, H. M., Webster, C. & Pavlath, G. K. Defective myoblasts identified in Duchenne muscular dystrophy. *Proc. Natl Acad. Sci. USA* **80**, 4856–4860 (1983).
- Webster, C. & Blau, H. M. Accelerated age-related decline in replicative life-span of Duchenne muscular dystrophy myoblasts: implications for cell and gene therapy. *Somat. Cell Mol. Genet.* **16**, 557–565 (1990).
- Webster, C. *et al.* The myoblast defect identified in Duchenne muscular dystrophy is not a primary expression of the DMD mutation. Clonal analysis of myoblasts from five double heterozygotes for two X-linked loci: DMD and G6PD. *Hum. Genet.* **74**, 74–80 (1986).
- Delaporte, C., Dehaupas, M. & Fardeau, M. Comparison between the growth pattern of cell cultures from normal and Duchenne dystrophy muscle. *J. Neurol. Sci.* **64**, 149–160 (1984).
- Sacco, A. *et al.* Short telomeres and stem cell exhaustion model Duchenne muscular dystrophy in mdx/mTR mice. *Cell* **143**, 1059–1071 (2010).
- Chakkalakal, J. V. *et al.* Early forming label-retaining muscle stem cells require p27kip1 for maintenance of the primitive state. *Development* **141**, 1649–1659 (2014).
- Kottlors, M. & Kirschner, J. Elevated satellite cell number in Duchenne muscular dystrophy. *Cell Tissue Res.* **340**, 541–548 (2010).
- Cohn, R. D. *et al.* Disruption of Dag1 in differentiated skeletal muscle reveals a role for dystroglycan in muscle regeneration. *Cell* **110**, 639–648 (2002).
- Kanagawa, M. *et al.* Impaired viability of muscle precursor cells in muscular dystrophy with glycosylation defects and amelioration of its severe phenotype by limited gene expression. *Hum. Mol. Genet.* **22**, 3003–3015 (2013).
- Dumont, N. A. *et al.* Dystrophin expression in muscle stem cells regulates their polarity and asymmetric division. *Nat. Med.* **21**, 1455–1463 (2015).
- Kuang, S., Kuroda, K., Le Grand, F. & Rudnicki, M. A. Asymmetric self-renewal and commitment of satellite stem cells in muscle. *Cell* **129**, 999–1010 (2007).
- Keefe, A. C. & Kardon, G. A new role for dystrophin in muscle stem cells. *Nat. Med.* **21**, 1391–1393 (2015).
- Rando, T. A. The dystrophin-glycoprotein complex, cellular signaling, and the regulation of cell survival in the muscular dystrophies. *Muscle Nerve* **24**, 1575–1594 (2001).
- Yang, B. *et al.* SH3 domain-mediated interaction of dystroglycan and Grb2. *J. Biol. Chem.* **270**, 11711–11714 (1995).
- Oak, S. A., Zhou, Y. W. & Jarrett, H. W. Skeletal muscle signaling pathway through the dystrophin glycoprotein complex and Rac1. *J. Biol. Chem.* **278**, 39287–39295 (2003).
- Kim, S. K. Cell polarity: new PARTners for Cdc42 and Rac. *Nat. Cell Biol.* **2**, E143–E145 (2000).
- Wakayama, Y. *et al.* Ultrastructural localization of alpha 1-syntrophin and neuronal nitric oxide synthase in normal skeletal myofiber, and their relation to each other and to dystrophin. *Acta Neuropathol.* **94**, 455–464 (1997).
- Buono, R. *et al.* Nitric oxide sustains long-term skeletal muscle regeneration by regulating fate of satellite cells via signaling pathways requiring Vangl2 and cyclic GMP. *Stem Cells* **30**, 197–209 (2012).
- Meng, J., Muntoni, F. & Morgan, J. E. Stem cells to treat muscular dystrophies—where are we? *Neuromuscul. Disord.* **21**, 4–12 (2011).
- Lu, Q., Cirak, S. & Partridge, T. What can we learn from clinical trials of exon skipping for DMD? *Mol. Ther. Nucleic Acids* **3**, e152 (2014).
- Tabebordbar, M. *et al.* In vivo gene editing in dystrophic mouse muscle and muscle stem cells. *Science* **351**, 407–411 (2016).
- Long, C. *et al.* Prevention of muscular dystrophy in mice by CRISPR/Cas9-mediated editing of germline DNA. *Science* **345**, 1184–1188 (2014).
- Nelson, C. E. *et al.* In vivo genome editing improves muscle function in a mouse model of Duchenne muscular dystrophy. *Science* **351**, 403–407 (2016).
- Arnett, A. L. *et al.* Adeno-associated viral vectors do not efficiently target muscle satellite cells. *Mol. Ther. Methods Clin. Dev.* **1**, 14038 (2014).
- Pillay, S. *et al.* An essential receptor for adeno-associated virus infection. *Nature* **530**, 108–112 (2016).
- Kimura, E., Li, S., Gregorevic, P., Fall, B. M. & Chamberlain, J. S. Dystrophin delivery to muscles of mdx mice using lentiviral vectors leads to myogenic progenitor targeting and stable gene expression. *Mol. Ther.* **18**, 206–213 (2009).
- Harper, S. Q. *et al.* Modular flexibility of dystrophin: implications for gene therapy of Duchenne muscular dystrophy. *Nat. Med.* **8**, 253–261 (2002).
- Koenig, M. *et al.* The molecular basis for Duchenne versus Becker muscular dystrophy: correlation of severity with type of deletion. *Am J Hum. Genet.* **45**, 498–506 (1989).
- Beggs, A. H. *et al.* Exploring the molecular basis for variability among patients with Becker muscular dystrophy: dystrophin gene and protein studies. *Am. J. Hum. Genet.* **49**, 54–67 (1991).
- Vieira, N. M. *et al.* Jagged 1 rescues the duchenne muscular dystrophy phenotype. *Cell* **163**, 1204–1213 (2015).
- Castro-Gago, M. Milder course in Duchenne patients with nonsense mutations and no muscle dystrophin. *Neuromuscul. Disord.* **25**, 443 (2015).
- Zatz, M. *et al.* Milder course in Duchenne patients with nonsense mutations and no muscle dystrophin. *Neuromuscul. Disord.* **24**, 986–989 (2014).
- Conboy, I. M. & Rando, T. A. The regulation of Notch signaling controls satellite cell activation and cell fate determination in postnatal myogenesis. *Dev. Cell* **3**, 397–409 (2002).
- Le Roux, I., Konge, J., Le Cam, L., Flamant, P. & Tajbakhsh, S. Numb is required to prevent p53-dependent senescence following skeletal muscle injury. *Nat. Commun.* **6**, 8528 (2015).
- Price, F. D. *et al.* Inhibition of JAK-STAT signaling stimulates adult satellite cell function. *Nat. Med.* **20**, 1174–1181 (2014).
- Tierney, M. T. *et al.* STAT3 signaling controls satellite cell expansion and skeletal muscle repair. *Nat. Med.* **20**, 1182–1186 (2014).
- Troy, A. *et al.* Coordination of satellite cell activation and self-renewal by par-complex-dependent asymmetric activation of p38α/β MAPK. *Cell Stem Cell* **11**, 541–553 (2012).
- Bernet, J. D. *et al.* P38 MAPK signaling underlies a cell autonomous loss of stem cell self-renewal in aged skeletal muscle. *Nat. Med.* **20**, 265–271 (2014).
- Nakamura, A., Yoshida, K., Ueda, H., Takeda, S. & Ikeda, S. Up-regulation of mitogen activated protein kinases in mdx skeletal muscle following chronic treadmill exercise. *Biochim. Biophys. Acta* **1740**, 326–331 (2005).
- Wissing, E. R. *et al.* P38α MAPK underlies muscular dystrophy and myofiber death through a Bax-dependent mechanism. *Hum. Mol. Genet.* **23**, 5452–5463 (2014).
- Le Grand, F., Jones, A. E., Seale, V., Scimè, A. & Rudnicki, M. A. Wnt7a activates the planar cell polarity pathway to drive the symmetric expansion of satellite stem cells. *Cell Stem Cell* **4**, 535–547 (2009).
- Bentzinger, C. F. *et al.* Fibronectin regulates Wnt7a signaling and satellite cell expansion. *Cell Stem Cell* **12**, 75–87 (2013).
- Von Maltzahn, J., Renaud, J.-M., Parise, G. & Rudnicki, M. A. Wnt7a treatment ameliorates muscular dystrophy. *Proc. Natl Acad. Sci. USA* **109**, 20614–20619 (2012).
- Von Maltzahn, J., Zinoviev, R., Chang, N. C., Bentzinger, C. F. & Rudnicki, M. A. A truncated Wnt7a retains full biological activity in skeletal muscle. *Nat. Commun.* **4**, 2869 (2013).
- Hayashiji, N. *et al.* G-CSF supports long-term muscle regeneration in mouse models of muscular dystrophy. *Nat. Commun.* **6**, 6745 (2015).
- Chandrasekharan, K. & Martin, P. T. Genetic defects in muscular dystrophy. *Methods Enzymol.* **479**, 291–322 (2010).
- Beedle, A. M. *et al.* Mouse fukutin deletion impairs dystroglycan processing and recapitulates muscular dystrophy. *J. Clin. Invest.* **122**, 3330–3342 (2012).
- Ross, J. *et al.* Defects in glycosylation impair satellite stem cell function and niche composition in the muscles of the dystrophic Largemud mouse. *Stem Cells* **30**, 2330–2341 (2012).
- Conboy, M. J., Karasov, A. O. & Rando, T. A. High incidence of non-random template strand segregation and asymmetric fate determination in dividing stem cells and their progeny. *PLoS Biol.* **5**, e102 (2007).
- Mayer, U. *et al.* Absence of integrin alpha 7 causes a novel form of muscular dystrophy. *Nat. Genet.* **17**, 318–323 (1997).
- Rooney, J. E. *et al.* Severe muscular dystrophy in mice that lack dystrophin and alpha7 integrin. *J. Cell Sci.* **119**, 2185–2195 (2006).
- Rooney, J. E., Gurple, P. B., Yablonka-Reuveni, Z. & Burkin, D. J. Laminin-111 restores regenerative capacity in a mouse model for α7 integrin congenital myopathy. *Am. J. Pathol.* **174**, 256–264 (2009).

61. Goulas, S., Conder, R. & Knoblich, J. A. The Par complex and integrins direct asymmetric cell division in adult intestinal stem cells. *Cell Stem Cell* **11**, 529–540 (2012).
62. Pozzoli, U. *et al.* Comparative analysis of the human dystrophin and utrophin gene structures. *Genetics* **160**, 793–798 (2002).
63. Pons, F., Nicholson, L. V., Robert, A., Voit, T. & Leger, J. J. Dystrophin and dystrophin-related protein (utrophin) distribution in normal and dystrophin-deficient skeletal muscles. *Neuromuscul. Disord.* **3**, 507–514 (1993).
64. Deconinck, A. E. *et al.* Utrophin-dystrophin-deficient mice as a model for duchenne muscular dystrophy. *Cell* **90**, 717–727 (1997).
65. Tinsley, J. *et al.* Expression of full-length utrophin prevents muscular dystrophy in mdx mice. *Nat. Med.* **4**, 1441–1444 (1998).
66. Gilbert, R. *et al.* Adenovirus-mediated utrophin gene transfer mitigates the dystrophic phenotype of mdx mouse muscles. *Hum. Gene Ther.* **10**, 1299–1310 (1999).
67. Yamashita, K. *et al.* The 8th and 9th tandem spectrin-like repeats of utrophin cooperatively form a functional unit to interact with polarity-regulating kinase PAR-1b. *Biochem. Biophys. Res. Commun.* **391**, 812–817 (2010).
68. Lu, A. *et al.* Rapid depletion of muscle progenitor cells in dystrophic mdx/utrophin $-/-$ mice. *Hum. Mol. Genet.* **23**, 4786–4800 (2014).
69. Pillers, D.-A. M. *et al.* Effects of dystrophin isoforms on signal transduction through neural retina: genotype-phenotype analysis of duchenne muscular dystrophy mouse mutants. *Mol. Genet. Metab.* **66**, 100–110 (1999).
70. Im, W. B. *et al.* Differential expression of dystrophin isoforms in strains of mdx mice with different mutations. *Hum. Mol. Genet.* **5**, 1149–1153 (1996).
71. Cox, G. A., Phelps, S. F., Chapman, V. M. & Chamberlain, J. S. New mdx mutation disrupts expression of muscle and nonmuscle isoforms of dystrophin. *Nat. Genet.* **4**, 87–93 (1993).
72. Muschler, J. *et al.* A role for dystroglycan in epithelial polarization: loss of function in breast tumor cells. *Cancer Res.* **62**, 7102–7109 (2002).
73. Anderson, J. L., Head, S. I., Rae, C. & Morley, J. W. Brain function in Duchenne muscular dystrophy. *Brain* **125**, 4–13 (2002).
74. Doorenweerd, N. *et al.* Reduced cerebral gray matter and altered white matter in boys with Duchenne muscular dystrophy. *Ann. Neurol.* **76**, 403–411 (2014).
75. Satz, J. S. *et al.* Distinct functions of glial and neuronal dystroglycan in the developing and adult mouse brain. *J. Neurosci.* **30**, 14560–14572 (2010).
76. Wang, Y. *et al.* Dystrophin is a tumor suppressor in human cancers with myogenic programs. *Nat. Genet.* **46**, 601–606 (2014).
77. Schmidt, W. M. *et al.* DNA damage, somatic aneuploidy, and malignant sarcoma susceptibility in muscular dystrophies. *PLoS Genet.* **7**, e1002042 (2011).
78. Neumüller, R. A. & Knoblich, J. A. Dividing cellular asymmetry: asymmetric cell division and its implications for stem cells and cancer. *Genes Dev.* **23**, 2675–2699 (2009).
79. Nowak, K. J. & Davies, K. E. Duchenne muscular dystrophy and dystrophin: pathogenesis and opportunities for treatment. *EMBO Rep.* **5**, 872–876 (2004).



This work is licensed under a Creative Commons Attribution 4.0 International License. The images or other third party material in this article are included in the article's Creative Commons license, unless indicated otherwise in the credit line; if the material is not included under the Creative Commons license, users will need to obtain permission from the license holder to reproduce the material. To view a copy of this license, visit <http://creativecommons.org/licenses/by/4.0/>

© The Author(s) 2016