

ARTICLE

Received 26 Jan 2015 | Accepted 2 Jul 2015 | Published 14 Aug 2015

DOI: 10.1038/ncomms8975

OPEN

Common and rare variants associated with kidney stones and biochemical traits

Asmundur Oddsson^{1,*}, Patrick Sulem^{1,*}, Hannes Helgason^{1,2}, Vidar O. Edvardsson^{3,4,5}, Gudmar Thorleifsson¹, Gardar Sveinbjörnsson¹, Eik Haraldsdóttir¹, Gudmundur I. Eyjolfsson⁶, Olof Sigurdardóttir⁷, Isleifur Olafsson⁸, Gisli Masson¹, Hilma Holm¹, Daniel F. Gudbjartsson^{1,2}, Unnur Thorsteinsdóttir^{1,4}, Olafur S. Indridason⁹, Runolfur Palsson^{4,5,9} & Kari Stefansson^{1,4}

Kidney stone disease is a complex disorder with a strong genetic component. We conducted a genome-wide association study of 28.3 million sequence variants detected through whole-genome sequencing of 2,636 Icelanders that were imputed into 5,419 kidney stone cases, including 2,172 cases with a history of recurrent kidney stones, and 279,870 controls. We identify sequence variants associating with kidney stones at *ALPL* (rs1256328[T], odds ratio (OR) = 1.21, $P = 5.8 \times 10^{-10}$) and a suggestive association at *CASR* (rs7627468[A], OR = 1.16, $P = 2.0 \times 10^{-8}$). Focusing our analysis on coding sequence variants in 63 genes with preferential kidney expression we identify two rare missense variants *SLC34A1* p.Tyr489Cys (OR = 2.38, $P = 2.8 \times 10^{-5}$) and *TRPV5* p.Leu530Arg (OR = 3.62, $P = 4.1 \times 10^{-5}$) associating with recurrent kidney stones. We also observe associations of the identified kidney stone variants with biochemical traits in a large population set, indicating potential biological mechanism.

¹deCODE genetics/Amgen, Inc., Reykjavik 101, Iceland. ²School of Engineering and Natural Sciences, University of Iceland, Reykjavik 101, Iceland. ³Children's Medical Center, Landspítali—The National University Hospital of Iceland, Reykjavik 101, Iceland. ⁴Faculty of Medicine, University of Iceland, Reykjavik 101, Iceland. ⁵The Rare Kidney Stone Consortium, Mayo Clinic, Rochester, Minnesota, USA. ⁶Icelandic Medical Center (Laeknasetrid), Laboratory in Mjódd (RAM), Reykjavik 109, Iceland. ⁷Department of Clinical Biochemistry, Akureyri Hospital, Akureyri, 600, Iceland. ⁸Department of Clinical Biochemistry, Landspítali University Hospital, Reykjavik 101, Iceland. ⁹Division of Nephrology, Internal Medicine Services, Landspítali—The National University Hospital of Iceland, Reykjavik Iceland. * These authors contributed equally to this work. Correspondence and requests for materials should be addressed to A.O. (email: asmundur.oddsson@decode.is) or to K.S. (email: kari.stefansson@decode.is).

The lifetime risk of kidney stones is 8.8% in the United States¹ with an estimated recurrence rate of 14% after 1 year and 35% after 5 years², placing a significant burden on the health care system¹. In Iceland, the prevalence in individuals older than 70 years is 10.1% for men and 4.2% for women³. Kidney stones form when urine becomes supersaturated with salts such as calcium oxalate or calcium phosphate and when urine concentrations of natural inhibitors of stone formation such as citrate, magnesium, pyrophosphate, uromodulin and osteopontin are low^{4,5}. Calcium oxalate and calcium phosphate are the most common (~80%) constituents of kidney stones⁵. The mechanism of stone formation involves both environmental factors such as diet⁶ and genetic traits. Individuals with a family history of kidney stones are at a greater risk than others of developing the condition. Recent studies estimate that up to 65% of kidney stone formers have a family history of kidney stones^{7–9} and both twin¹⁰ and genealogy¹¹ studies have reported strong heritability of kidney stone disease. Candidate gene association studies have attempted to assess the role of several genes involved in calcium homeostasis on kidney stone formation¹². These studies have been limited by sample size, the results are conflicting and they do not consider a broad spectrum of sequence variants.

We previously published a genome-wide association study (GWAS) of kidney stone disease, testing a total of 303,120 variants in 1,507 cases and 34,033 controls from Iceland¹³. Following replication in additional cases and controls from Iceland and the Netherlands, we reported a genome-wide significant association of the *CLDN14* locus, encoding the tight junction protein Claudin-14, on 21q22.13 with kidney stones (rs219780[C], allele frequency = 79.20%, odds ratio (OR) = 1.25, $P = 4.0 \times 10^{-12}$). A GWAS in the Japanese population involving 904 cases and 7,471 controls reported three loci associated with kidney stones following replication in additional cases and controls, *RGS14-SLC34A1*, encoding regulator of G-protein signalling 14 and the Na/Pi co-transporter solute carrier family 34 member 1, on 5q35.3 (rs11746443[A], OR = 1.19, $P = 8.5 \times 10^{-2}$), *INMT-FAM188B-AQP1*, a locus including the gene encoding aquaporin 1, on 7p14.3 (rs1000597[C], OR = 1.22, $P = 2.2 \times 10^{-14}$), and *DGKH*, encoding diacylglycerol kinase eta, on 13q14.1 (rs4142110[C], OR = 1.14, $P = 4.6 \times 10^{-9}$)¹⁴.

In the current study, we have substantially increased the sample size from our previous study¹³ (N cases = 5,419; N controls = 279,870). We were also able to increase the number of sequence variants tested by performing GWAS on imputed genotypes of sequence variants identified through whole-genome sequencing of 2,636 Icelanders, yielding a more extensive coverage of the genome. In addition to discovering associations with kidney stones, we assessed the association of these variants to 13 biochemical traits involved in calcium–phosphate metabolism, purine metabolism, kidney function, acid–base and ion homeostasis in a large population set.

Results

Main findings. In our previous work, we sequenced the whole genomes of 2,636 Icelanders^{15,16} (median sequencing depth of $23 \times$) yielding 28.3 million sequence variants. Subsequently, we imputed these variants assisted by long-range haplotype phasing into 98,721 Icelanders genotyped with Illumina SNP chips^{17,18}. Using Icelandic genealogy data, we also calculated genotype probabilities of untyped close relatives of chip-typed individuals¹⁹. We examined the association between sequence variants and kidney stones in 5,419 Icelandic kidney stone formers³ (2,979 chip-typed and 2,440 chip-typed first- or second-

degree relatives) including 2,172 recurrent kidney stone formers (see Methods for definition) and 279,870 controls (88,266 chip-typed and 191,604 chip-typed first- or second-degree relatives). We assessed the association of kidney stone associated sequence variants with biochemical parameters involved in calcium–phosphate metabolism (serum calcium, $N = 114,489$; serum ionized calcium, $N = 18,516$; serum phosphate, $N = 51,056$; parathyroid hormone (PTH), $N = 15,541$; 25-hydroxy vitamin D, $N = 7,544$; alkaline phosphatase (ALP), $N = 126,060$), purine metabolism (serum uric acid, $N = 56,025$), acid–base homeostasis (serum bicarbonate ($N = 44,511$), kidney function (serum creatinine, $N = 195,933$) and ion homeostasis (serum chloride, $N = 92,938$; serum magnesium, $N = 37,188$; serum potassium, $N = 201,720$; serum sodium, $N = 198,119$).

In this study, we found variants at three loci associated with kidney stones at a genome-wide significance level ($0.05/28.3$ million = 1.8×10^{-9}) and one additional locus with suggestive association (Fig. 1; Table 1). At these loci, we also observed genome-wide significant associations with serum calcium, phosphate, PTH and ALP that do not in all cases correlate with the corresponding kidney stone association signal. Focusing on coding variants in genes with preferential renal expression, we also found two rare coding variants associating with kidney stones and recurrent stone formation.

Variants at *ALPL*. We observe a genome-wide significant signal with two fully correlated markers associating with kidney stones in *ALPL* at 1p36.12, represented by rs1256328 [T] (minor allele frequency (MAF) = 17.79%, OR = 1.21, $P = 5.8 \times 10^{-10}$) (Fig. 2; Table 1; Supplementary Table 1). A missense variant in *ALPL* (rs34605986 [A], MAF = 15.21%, NP_000469.3:p.Val522Ala) that correlates with rs1256328 ($r^2 = 0.73$) also associates with kidney stones (OR = 1.19, $P = 8.9 \times 10^{-8}$) (Supplementary Table 1). When considering the 3,119 variants located within the linkage disequilibrium (LD) block containing rs1256328 no variants remained significant after adjusting for it ($P > 0.05/1,625 = 3.1 \times 10^{-5}$) (Fig. 2; Supplementary Table 1). *ALPL* encodes a tissue nonspecific ALP. The sequence variant rs1256328 [T] and the correlated missense variant *ALPL* p.Val522Ala have a significant association with increased serum ALP levels in the general population (effect > 7.8 s.d., $P < 2.2 \times 10^{-32}$) (Table 2). To attempt replication, we directly genotyped the missense variant *ALPL* p.Val522Ala in a Danish population set ($N = 5,822$, MAF_{Denmark} = 17.53%). We replicated the association ($P = 3.0 \times 10^{-4}$) with an effect = 10.73 s.d.%. Combined analysis of discovery and replication sets yielded a $P = 3.5 \times 10^{-35}$ and an effect = 8.00 s.d.% with no heterogeneity between the populations ($P = 0.38$). This is consistent with a previous functional study where a mutated version of *ALPL* carrying p.Val522Ala showed increased enzyme activity in a cell-based assay²⁰. Within *ALPL*, we also detect a low-frequency missense variant (rs149344982[A], MAF = 1.42%, NP_000469.3:p.Arg152His), which associates strongly with reduced serum ALP levels (effect = -45.9 s.d., $P = 9.84 \times 10^{-105}$) and suggestively with reduced risk of kidney stones (OR = 0.742, $P = 8.1 \times 10^{-3}$) (Supplementary Table 2). *ALPL* p.Arg152His has little correlation with the more common *ALPL* variants rs1256328 and p.Val522Ala ($r^2 < 0.0040$) (Supplementary Table 3). This finding is in line with the effect of several rare loss-of-function variants in *ALPL* that have been reported in patients with hypophosphatasia (OMIM:146300), a syndrome characterized by decreased levels of ALP and elevated urine pyrophosphate²¹, a known inhibitor of kidney stone formation⁴. *ALPL* is expressed in the proximal tubules of the kidney²¹ and hydrolyses pyrophosphate to free phosphate, where it may promote the

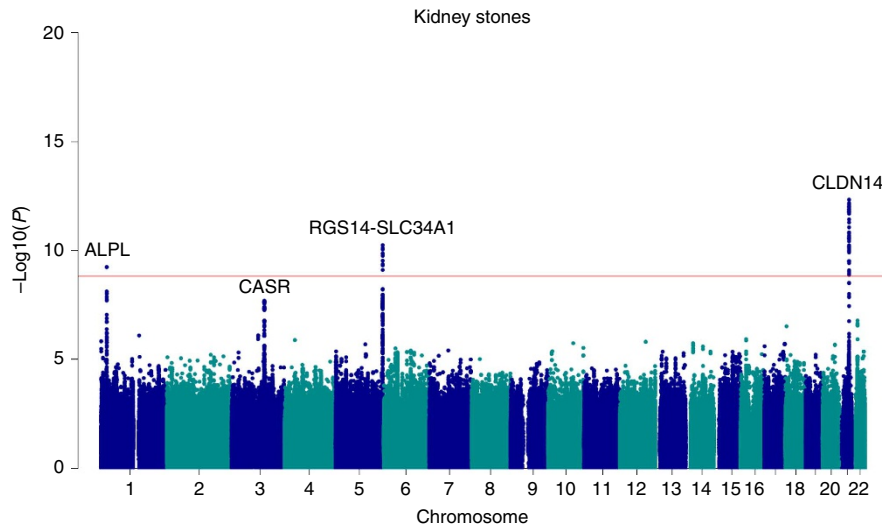


Figure 1 | Manhattan plot showing individual P values against genomic positions for associations with kidney stones Genome-wide association analysis of kidney stones yielded four loci (*CLDN14*, *RGS14-SLC34A1*, *ALPL* and *CASR*) that influence kidney stones in Iceland (cases: 5,419, controls: 279,870). Logistic regression was used for association testing between sequence variants and disease, treating disease status as the response and genotype counts as covariates. For the plot, the $-\log_{10} P$ values (y axis) of sequence variants are shown according to their chromosomal position (x axis). The red line indicates the threshold for genome-wide statistical significance, which takes into account the effects of multiple testing ($P = 0.05/28.3$ million = 1.8×10^{-9}).

Table 1 | Summary information for the lead regional sequence variants associating with kidney stone.

SNP ID	Position (Hg18)	A	MAF (%) ice/1Keu	Locus	Kidney stones		Recurrent kidney stones		Mechanism
					P	OR	P	OR	
rs199565725	chr21:36757108	A/AAC	23.68/23.20	<i>CLDN14</i>	4.7×10^{-13}	0.81	3.5×10^{-9}	0.77	Cell-cell adhesion
rs12654812	chr5:176726797	A/G	41.84/34.78	<i>SLC34A1</i>	5.7×10^{-11}	1.18	4.4×10^{-7}	1.21	Na/Pi co-transporter
rs1256328	chr1:21769354	T/C	17.79/17.32	<i>ALPL</i>	5.8×10^{-10}	1.21	4.0×10^{-6}	1.23	Alkaline phosphatase
rs7627468	chr3:123428789	A/G	26.80/24.02	<i>CASR</i>	2.0×10^{-8}	1.16	4.1×10^{-5}	1.18	Ca-sensing G-protein-coupled receptor

A, allele (minor/major); MAF, minor allele frequency (ice, Iceland; 1Keu, 1000 genomes European Americans); OR, odds ratio. Reported are the three genome-wide significant ($P < 1.8 \times 10^{-9}$) sequence variants (rs199565725, rs12654812 and rs1256328) and in addition one suggestive sequence variant (rs7627468) associating with kidney stone in Iceland.

formation of kidney stones⁴. Our results, for variants in *ALPL* that either increase or decrease ALP levels, suggest that the effect of *ALPL* on extracellular pyrophosphate metabolism can influence kidney stone formation.

The most significant association with serum phosphate levels in the Icelandic population is observed at the *ALPL* locus, represented by rs12132412[G] (MAF = 34.85%, effect = 5.0 s.d., $P = 1.8 \times 10^{-19}$) (Supplementary Table 2). This variant remains significant (adjusted $P = 1.7 \times 10^{-6}$, adjusted effect = 3.9 s.d.%) after adjusting for the correlated rs1697421 ($r^2 = 0.54$), which has been reported to associate with serum phosphate levels²². Notably, rs12132412[G] also associates with ALP levels (effect = -6.5 s.d., $P = 1.1 \times 10^{-34}$) and is correlated ($r^2 = 0.41$) with rs1976403, which has been associated with ALP levels²³ (Supplementary Table 3). In the Icelandic population, the reported sequence variant rs1976403[C] associates significantly with both ALP (effect = 10.4 s.d., $P = 4.3 \times 10^{-93}$) and serum phosphate levels (effect = -3.7 s.d., $P = 5.2 \times 10^{-12}$) (Supplementary Table 2). Interestingly, rs12132412 and rs1976403 have little correlation with rs1256328 and *ALPL* p.Arg152His that show association with kidney stones and demonstrate significant association with ALP at the *ALPL*

locus ($r^2 < 0.0062$) (Supplementary Table 2; Supplementary Table 4). Similarly, rs1256328 and *ALPL* p.Arg152His do not associate with serum phosphate levels (effect = -0.3 s.d., $P = 0.71$ and effect = 3.7 s.d., $P = 0.1$, respectively) (Supplementary Table 2).

In summary, we report three uncorrelated ($r^2 < 0.0062$ for all pairs) genome-wide significant signals at the *ALPL* locus associating with ALP and kidney stones (rs1256328), ALP and serum phosphate (rs12132412 and rs1976403) and ALP (rs149344982).

Variants at *SLC34A1*. On 5q35.3 at the *SLC34A1* locus, encoding the Na/Pi co-transporter *SLC34A1*, we replicate with an effect size similar to the replicated one a common kidney stone association signal previously reported in an Asian population¹⁴ (Supplementary Table 5). The strongest marker in our data rs12654812[A] (MAF = 41.84%) associates with kidney stones with an OR = 1.18 and $P = 5.7 \times 10^{-11}$ (Fig. 1; Table 1) and correlates with the previously reported marker ($r^2 = 0.68$) (Supplementary Table 5). Nine variants located in or near *SLC34A1* show genome-wide significant association with kidney

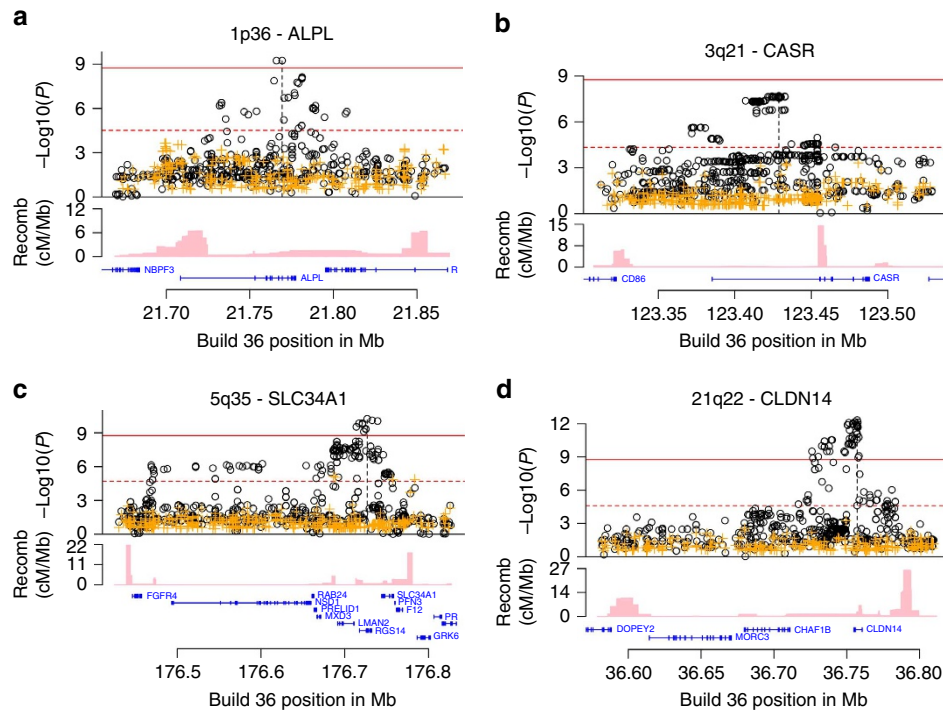


Figure 2 | Locus plots corresponding to genome-wide significant and suggestive loci associating with kidney stone Logistic regression was used for association testing between sequence variants and disease, treating disease status as the response and genotype counts as covariates (**a-d**) For each plot, the $-\log_{10} P$ values, derived by logistic regression, (y axis) for the sequence variants are shown according to their chromosomal positions (x axis). The significant loci are at 1p36 (**a**), 5q35 (**c**), 21q22 (**d**) and suggestive locus at 3q21 (**b**). Orange sequence variant colour represent association values after adjusting for the leading variant. Estimated recombination rates are shown as pink lines and the genomic locations of genes at the locus are depicted in blue. The red solid line indicates the threshold for genome-wide statistical significance, which takes into account the effects of multiple testing ($P = 0.05/28.3 \text{ million} = 1.8 \times 10^{-9}$). The red broken line indicates the significance threshold for claiming independence of the index variant based on the number variants located within the LD block containing the index variant at each locus (ALPL; $0.05/1,625 = 3.1 \times 10^{-5}$, CASR; $0.05/1,078 = 4.6 \times 10^{-5}$, SLC34A1; $0.05/2,516 = 2.0 \times 10^{-5}$, CLDN14; $0.05/1,993 = 2.5 \times 10^{-5}$).

stones and correlate with the index variant rs12654812 ($r^2 > 0.63$) (Fig. 2; Supplementary Table 6). In addition, we demonstrate that rs12654812[A] associates significantly with decreased serum PTH levels (effect = -5.9 s.d.%, $P = 2.3 \times 10^{-9}$) and decreased serum phosphate (effect = -4.2 s.d.%, $P = 1.1 \times 10^{-14}$) (Table 2). The sequence variant rs12654812 has also been reported by us and others to associate with kidney function-related traits^{24,25}. To search for additional signals at this locus after adjusting for the index variant rs12654812, we performed conditional analysis including all variants located within the LD block containing rs12654812. We identified three strongly correlated ($r^2 > 0.90$) rare variants, chr5:176686425[G], chr5:176688995[T] and chr5:176757439[G] (hg18) (MAF < 0.50 %), that remained significant given the number of tests performed after adjusting for rs12654812 ($P < 2.0 \times 10^{-5} = 0.05/2,516$). One is a missense variant in *SLC34A1* (chr5:176757439[G] (NCBI36/hg18), NP_003043.3:p.Tyr489Cys, MAF = 0.46 %) that was observed only once among 61,486 exomes in the Exome Aggregation Consortium (ExAC: <http://exac.broadinstitute.org>) database²⁶ (N samples = 2,535). *SLC34A1* p.Tyr489Cys shows the best association of all coding variants ($N = 24$) with kidney stone disease (adjusted OR = 1.93, adjusted $P = 1.4 \times 10^{-5}$) and recurrent stone formation (adjusted OR = 2.58, adjusted $P = 4.3 \times 10^{-6}$) (Table 3) in *SLC34A1* and the nine adjacent genes that reside within the same LD block (Fig. 2). The p.Tyr489Cys variant is located in the Na/Pi co-transporter domain²⁷ (amino acids 368–504, see Supplementary Fig. 1) at a highly conserved position (GERP²⁸ = 5.03) and is predicted to be pathogenic (PolyPhen²⁹ = probably damaging

and SIFT³⁰ = deleterious). Interestingly, p.Tyr489Cys has been reported to associate with increased serum creatinine such as the common kidney stone risk variant rs12654812 [A]²⁵. In our data, p.Tyr489Cys also associates with decreased PTH levels, similar to rs12654812[A] (Table 2; Supplementary Table 7).

The association data presented here point to *SLC34A1* as the kidney stone target at this locus. In support of this hypothesis, several studies demonstrate that rare variants in *SLC34A1* are linked to hypophosphatemic nephrolithiasis/osteoporosis (OMIM:612286) and that *SLC34A1* is the only gene at the locus that shows tissue-specific gene expression in kidney³¹. Furthermore, the observed changes in biochemical traits reflect the function of *SLC34A1* as a phosphate transporter. The kidney is the main regulatory organ of phosphate homeostasis and serum phosphate levels are reflected by a change in phosphate reabsorption. *SLC34A1* is expressed in the brush border membrane of proximal tubular cells, where the bulk of phosphate reabsorption takes place, and appears to be responsible for $\sim 70\%$ of total phosphate transport based on mouse models in which *Slc34a1* has been knocked out^{32–34}. The reduction in serum PTH levels associated with the kidney stone variants likely results from a decrease in serum phosphate levels caused by diminished renal reabsorption as a consequence of the negative feedback loop that maintains serum phosphate levels.

Variants at *CLDN14*. We previously reported a genome-wide significant association at the *CLDN14* locus on 21q22.13 with kidney stones represented by rs219780 (ref. 13). In the current

Table 2 | Kidney stone associated biochemical traits.

Trait*	N (KS cases)	CLDN14 rs199565725[T]		SLC34A1 rs12654812[A]		ALPLrs1256328[T]		CASR rs7627468[A]		
		P	Effect (s.d.%)	P	Effect (s.d.%)	P	Effect(s.d.%)	P	Effect (s.d.%)	
<i>Calcium-phosphate metabolism</i>										
ALP	126,060 (3,869)	0.30	-0.6	0.037	1.1	2.2×10^{-32}	7.8	0.92	0.1	
PTH	15,541 (1,003)	1.1×10^{-4}	-4.5	2.3×10^{-9}	-5.9	0.62	-0.6	0.13	1.7	
25-OH VD	7,544 (377)	0.72	0.7	0.87	0.3	0.38	-1.7	7.5×10^{-3}	-4.6	
<i>Purine metabolism</i>										
Uric Acid	56,025 (2,667)	0.20	-1.0	0.090	1.1	0.56	-0.5	0.59	0.4	
<i>Acid-base homeostasis</i>										
Bicarbonate	44,511 (1,576)	0.60	0.4	0.15	0.1	0.50	0.6	0.61	0.4	
<i>Kidney function</i>										
Creatinine	195,933 (4,911)	0.17	-0.6	5.4×10^{-8}	0.2	0.95	0.1	0.45	0.3	
<i>Ion homeostasis</i>										
Calcium	114,489 (3,842)	0.34	0.5	0.012	1.1	0.79	-0.1	1.1×10^{-3}	1.6	
Calcium ionized	18,516 (1,129)	0.57	-0.5	0.026	1.8	0.63	0.5	6.0×10^{-3}	2.5	
Chloride	92,938 (3,228)	0.61	0.3	0.81	-0.1	0.09	-0.1	0.26	0.6	
Magnesium	37,188 (1,472)	2.0×10^{-7}	4.0	0.27	0.7	0.53	0.5	0.36	-0.7	
Phosphate	51,056 (2,228)	0.11	1.0	1.1×10^{-14}	-4.2	0.71	-0.3	0.01	-1.5	
Potassium	201,720 (4,980)	8.2×10^{-4}	-1.2	0.65	-0.1	0.80	0.1	0.05	0.7	
Sodium	198,119 (4,951)	0.39	-0.3	0.019	0.8	0.41	0.3	0.11	-0.6	

ALP, alkaline phosphatase; PTH, parathyroid hormone, 25-OH VD, 25-hydroxy vitamin D; N, number of individuals with genotype information with quantitative traits measurements Association of genome-wide significant and suggestive kidney stone sequence variants with biochemical traits involved in calcium-phosphate metabolism, purine metabolism, kidney function, acid-base and ion homeostasis. Underlined are P values reaching a significant threshold for the number of tests performed ($0.05/52 = 9.6 \times 10^{-4}$). The number of kidney stone cases in each group is indicated within brackets. *All measurements are obtained from serum.

Table 3 | Summary information for coding sequence variants in genes with specific or enriched expression in the kidney associating with kidney stone.

Position (Hg18)	A	MAF (%)	Gene	HGVS	Kidney stones		Recurrent kidney stones		Mechanism
					P*	OR	P*	OR	
chr5:176757439	G/A	0.46	SLC34A1	NP_003043.3:p.Tyr489Cys	8.5×10^{-5}	1.82	2.8×10^{-5}	2.38	Na/Pi co-transporter
chr7:142319969	C/A	0.13	TRPV5	NP_062815.2:p.Leu530Arg	2.3×10^{-3}	2.17	4.1×10^{-5}	3.62	Ca channel

OR, odds ratio
*Genes with specific or enriched kidney expression: N = 63. Coding variants with a MAF > 0.01% within these genes: N = 220, significance threshold for the number of test performed: $0.05/220 = 2.3 \times 10^{-4}$.

analysis, a total of 31 correlated variants at the locus reach genome-wide significance, including six variants for recurrent kidney stones (Fig. 1; Fig. 2; Supplementary Table 8). The strongest signal associating with kidney stones is a two base pair deletion in intron 1 of *CLDN14* rs199565725[delAC] (MAF = 23.68%, OR = 0.81, $P = 4.7 \times 10^{-13}$) (Table 1) correlating with the previously reported sequence variant rs219780[T] ($r^2 = 0.82$, OR = 0.81, $P = 2.6 \times 10^{-11}$). We do not observe a significant residual signal when adjusting the association of rs199565725 with kidney stones for rs219780 (adjusted $P = 0.086$). When considering the number of variants in the LD block containing rs199565725 no variants remained significant after adjusting for this variant ($P > 0.05/1,993 = 2.5 \times 10^{-5}$).

CLDN14 is a member of the claudin superfamily of proteins that regulate paracellular transport of ions and small solutes at epithelial tight junctions. We demonstrate that the sequence variant rs199565725[delAC] also associates with increased serum magnesium (effect = 4.0 s.d.%, $P = 2.0 \times 10^{-7}$), decreased serum potassium (effect = -1.2 s.d.%, $P = 8.2 \times 10^{-4}$) and decreased

PTH (effect = -4.5 s.d.%, $P = 1.1 \times 10^{-4}$) (Table 2). Interestingly, *Cldn14* knockout mice have significantly higher serum magnesium levels than wild-type animals when kept on a high-calcium diet³⁵. This might indicate that rs199565725[delAC] mediates a decrease of *CLDN14* gene function. Consistent with our previous study, rs199565725[delAC] shows a nominal association with bone mineral density (Supplementary Table 9).

Variants at CASR. After the three genome-wide significant loci for kidney stones, we observe a suggestive association of rs7627468[A] in the first intron of *CASR* at 3q21.1 encoding the calcium-sensing receptor (MAF = 26.80%; OR = 1.16, $P = 2.0 \times 10^{-8}$) (Table 1; Fig. 1). *CASR* is a G-protein-coupled receptor expressed on the apical surface of the proximal tubule³⁶ that plays a key role in renal control of calcium homeostasis³⁷ and has long been considered a candidate gene for kidney stones^{38,39}. A total of 58 variants, strongly correlated with rs7627468 ($r^2 > 0.95$) and located within intron 1 of *CASR*, associate with kidney stones (Fig. 2; Supplementary Table 10). A non-significant

trend was observed for rs7627468[A] with increased serum calcium (effect = 1.6 s.d.%, $P = 1.1 \times 10^{-3}$), increased ionized calcium (effect = 2.5 s.d.%, $P = 6.0 \times 10^{-3}$) and with decreased 25-hydroxy vitamin D levels (effect = -4.6 s.d.%, $P = 7.5 \times 10^{-3}$) (Table 2). We note that rs7627468 is not correlated with rs73186030, located 8-kb downstream of the *CASR* gene, ($r^2 = 0.0073$) that is the most significant marker for serum calcium in the Icelandic population (effect = 12.3 s.d.%, $P = 2.0 \times 10^{-61}$) and is strongly correlated with rs1801725 (NP_000379.2:p.Ala986Ser) ($r^2 = 0.97$), which has been associated with serum calcium^{40,41}. The sequence variant rs73186030 does not associate with kidney stones (OR = 0.96, $P = 0.33$) and this association remains unaffected after adjusted for the kidney stone variant rs7627468 (Supplementary Table 11). Conversely, when adjusted for the serum calcium variant rs73186030, the association of the kidney stone variant rs7627468[A] with serum calcium (adjusted effect = 2.2 s.d.%, adjusted $P = 3.9 \times 10^{-6}$) and ionized serum calcium strengthens (adjusted effect = 3.1 s.d.%, adjusted $P = 7.0 \times 10^{-4}$) (Supplementary Table 11).

In summary, we observe two uncorrelated signals ($r^2 = 0.0073$) at the *CASR* locus, one for serum calcium only (rs73186030) and one mainly for kidney stones (rs7627468). Taken together, this suggests that the effect of *CASR* on kidney stones is complex. The sequence variant rs73186030, which has a strong effect on serum calcium, does not associate with kidney stones. The kidney stone variant rs7627468 and other linked variants associated with kidney stones are located within intron 1 of *CASR* that entails a regulatory region⁴².

Rare coding variant in *TRPV5*. We used a recent source of data on tissue-enriched gene expression in an attempt to analyse coding variants in genes with preferential kidney expression³¹. We tested a total of 220 coding variants in 63 genes, showing tissue-specific or enriched expression in the kidney, for association with kidney stones and recurrent kidney stones. In addition to *SLC34A1* p.Tyr489Cys, we found a rare missense variant in *TRPV5* (NP_062815.2:p.Leu530Arg (MAF = 0.13 %) associating significantly with recurrent kidney stones (OR = 3.62, $P = 4.1 \times 10^{-5} < 0.05/220 = 2.3 \times 10^{-4}$) (Table 3). The *TRPV5* p.Leu530Arg variant was observed only once in the ExAC database (samples $N = 61,486$)²⁶. The variant is at a highly conserved position (GERP²⁸ = 5.8) and is predicted to be

damaging by two different algorithms (PolyPhen²⁹ = probably damaging and SIFT³⁰ = deleterious). *TRPV5* is a highly selective epithelial calcium channel and the mutation lies within the pore-forming region of the protein (amino acids 527–538)⁴³ (Fig. 3; Supplementary Fig. 1). The change in coding sequence results in substitution of the hydrophobic amino acid leucine with a positively charged arginine at position 530 (Fig. 3). The introduction of a positive charge into the hydrophobic pore-forming region of *TRPV5* is expected to interfere with the diffusion of positively charged calcium ions across the channel. *TRPV5* is expressed at the apical membrane of distal renal tubule epithelial cells that mediates calcium transport in the kidney and constitutes the rate-limiting step of active calcium reabsorption⁴⁴. *Trpv5* knockout mice and mice carrying a point mutation in *Trpv5* exhibit renal calcium wasting resulting in severe hypercalciuria^{45,46}. *TRPV5* has been suggested to play a role in hypercalciuric disorders but candidate gene studies have so far failed to demonstrate an association^{44,47,48}.

Variant in *APRT* and recessive mode of inheritance. We note that we observe a strong association of a missense variant in the *APRT* gene encoding adenine phosphoribosyltransferase (rs104894506[A], NP_000476.1:p.Asp65Val, MAF = 1.26%) with kidney stones under the recessive model (OR = 31.97, $P = 6.83 \times 10^{-10}$). This mutation has previously been reported to cause adenine phosphoribosyltransferase deficiency under a recessive mode of inheritance (OMIM:614723) with kidney stones as a hallmark clinical manifestation in Iceland^{49,50}. Consistent with this observation, we do not observe a significant association of rs104894506[A] with kidney stones under the additive model (OR = 1.01, $P = 0.93$). No other variant showed a genome-wide significant association with kidney stones under the recessive model.

Replication of Asian variants. A GWAS in Asians reported three loci associating with kidney stones¹⁴. In addition to the variants at the *SLC34A1* locus mentioned above, we were able to replicate variants at the *INMT-FAM188B-AQP1* locus ($P < 3.3 \times 10^{-3}$, OR = 1.16–1.21) (Supplementary Table 6).

Discussion

We performed a GWAS of 28.3 million variants discovered through sequencing and observed four common sequence variants associating with the risk of kidney stones at *ALPL*, *SLC34A1*, *CLDN14* and *CASR*. We replicate the association of the variant at *SLC34A1* reported in Asians¹⁴ and we previously reported¹³ the signal corresponding to the association of the variant at *CLDN14*. In addition to the classic GWAS approach, we used a recent resource³¹ on tissue-specific expression together with the ability to detect and impute rare variants to analyse coding changes in genes with enriched expression in the kidney. Among those, we found rare missense variants at highly conserved sites in *SLC34A1* and *TRPV5* associating strongly with risk of kidney stones and recurrent kidney stones. The identification of a rare missense variant in *SLC34A1*, independent of common variants in the region, points to *SLC34A1* as the causative gene for both signals. Interestingly, the calcium channel *TRPV5* has been the focus of several studies suggesting a role in kidney stone formation¹². Sequencing a large number of individuals ($N = 2,636$) in a founder population allowed us to detect the *TRPV5* p.Leu539Arg variant (MAF = 0.13%). This variant is essentially absent from other sequenced populations and is located at an extremely conserved site in the pore-forming region of the protein, making it likely to be the causal variant explaining the association with recurrent kidney stones. The total

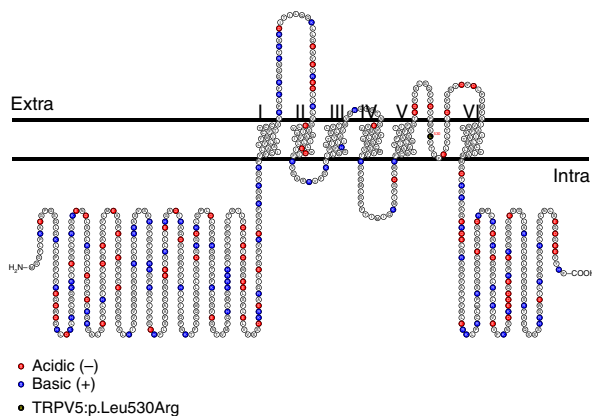


Figure 3 | Schematic illustration of the topology of the *TRPV5* protein

The *TRPV5* p.L530R mutation occurs within the pore-forming region (amino acids 527–538) of the ion transport domain (amino acids 389–578) of *TRPV5* replacing a hydrophobic with a basic amino acid. Acidic and basic amino acids as red and blue, respectively.

proportion of sibling recurrence risk for kidney stones explained by the identified sequence variants is 4.81% (Supplementary Table 12).

Two of the identified genes are involved in phosphate homeostasis (ALPL⁴ and SLC34A1 (refs 12)) and the other three genes play a key role in renal handling of calcium (CLDN14 and CASR, TRPV5)¹². We screened the kidney stones associated variants for their association to serum level of biochemical traits and detected association of variants at ALPL with ALP, SLC34A1 with PTH, and creatinine, phosphate and CLDN14 with PTH, magnesium and potassium. We also observed uncorrelated genome-wide significant association of variants at these loci that influence serum levels of biochemical traits but do not associate with the disease in all cases. This implies that the risk is not mediated solely through the serum levels of the biochemical traits.

The observation of three uncorrelated signals at ALPL associating with ALP levels which do not predict their associations with serum phosphate and kidney stones is noteworthy. This is an example of allelic heterogeneity that is particularly interesting in the context of the relationship between metabolic bone disease and kidney stones.

A similar pattern is observed at CASR where we observe two uncorrelated signals, one located in intron 1 of the CASR gene associating with kidney stones and the other at the 3'-end of the gene associating strongly with serum calcium but not with kidney stones. This observed allelic heterogeneity might reflect differences in the function of CASR in the kidney on one hand and the parathyroid gland on the other. Variations in intron 1 might specifically influence gene expression in the kidney influencing the ability of CASR to respond to extracellular calcium and in this way increase the risk of kidney stone formation⁵¹.

In summary, the genetic associations presented emphasize the role of sequence variants in genes involved in calcium-phosphate homeostasis in kidney stone disease. The pathophysiology underlying these associations requires further study.

Methods

The Icelandic study population. This study is based on whole-genome sequence data from the whole blood of 2,636 Icelanders participating in various disease projects at deCODE genetics^{15,16} (Supplementary Tables 13 and 14) (European Variant Archive: PRJEB8636). In addition, a total of 104,220 Icelanders have been genotyped using Illumina SNP chips^{15,16} (Supplementary Table 15) and genotype probabilities for untyped relatives has been calculated based on Icelandic genealogy^{15,16}.

All participating individuals, or their guardians, gave their informed consent before blood samples were drawn. The family history of participants donating blood was incorporated into the study by including the phenotypes of first- and second-degree relatives and integrating over their possible genotypes.

All sample identifiers were encrypted in accordance with the regulations of the Icelandic Data Protection Authority. Approval for these studies was provided by the National Bioethics Committee and the Icelandic Data Protection Authority.

Kidney stone study population. To identify kidney stone cases, we searched for patients with International Classification of Diseases (ICD) codes, radiology diagnosis codes and surgical procedure codes indicative of kidney stones³ at Landspítali—The National University Hospital of Iceland in Reykjavik (LUH), a community hospital for half of Iceland's population and a tertiary care centre for the whole nation; Akureyri Hospital in North Iceland, the largest hospital outside the Reykjavik area; and Domus Radiology in Reykjavik, the largest privately operated medical imaging clinic in the country. A thorough medical record review was conducted for all patients identified to confirm the diagnosis of kidney stones. Patients with calcifications other than kidney stones and asymptomatic kidney stones were excluded from the study. A total of 5,419 kidney stone cases were included in the association analysis; 2,979 of these were genotyped using various Illumina chips and imputed using long-range phased haplotypes, and genotype probabilities for 2,440 were imputed on the basis of information from genotyped close relatives^{15,16}. Among the kidney stone cases were 2,172 recurrent kidney stone formers. A recurrent episode was defined as the development of a new stone occurring at least 6 months following the first stone event. Controls comprised

individuals recruited through different genetic research projects at deCODE. Individuals in the kidney stone cohort were excluded from the control group. Of the controls, 88,266 were genotyped by chip, and 191,604 were imputed on the basis of the genotypes of close relatives^{15,16}. The total number of controls was 279,870.

Quantitative trait measurements. We studied a sample of Icelanders with biological markers measured at three different laboratories: the laboratory of the LUH, the Icelandic Medical Center (Laeknasetridd) Laboratory in Mjodd (RAM) and Akureyri Hospital (FSA). Here we use measurements of serum calcium ($N = 114,489$, geometric mean (GM) = 2.3), ionized serum calcium ($N = 18,516$, GM = 1.8), PTH ($N = 15,541$, GM = 2.0), 25-hydroxy vitamin D ($N = 7,544$, GM = 1.35), serum phosphate ($N = 51,056$, GM = 1.8), ALP ($N = 126,060$, GM = 2.6), bicarbonate ($N = 44,511$, GM = 1.7), chloride ($N = 92,938$, GM = 2.2), potassium ($N = 201,720$, GM = 4.2), sodium ($N = 198,119$, GM = 4.1) and uric acid ($N = 56,025$, GM = 1.9). The arithmetic mean of the quantile-quantile standardized trait values, adjusted for sex and age at the time of measurement for each individual, was used in the analysis.

A Danish sample set was included in the study involving measurement of ALP of healthy individuals from the Inter99 study⁵². The study was approved by the Regional Scientific Ethical Committees for Southern Denmark and the Capital Region of Denmark. Informed consent was obtained from all study participants.

Gene and variant annotation. Variants were annotated with information from Ensembl release 70 using Variant Effect Predictor (VEP) version 2.8 (refs 52,53).

Association testing. To test for association between sequence variants and disease, we applied logistic regression using disease status as the response and genotype counts as covariates as we described previously¹⁶. The following individual characteristics that correlate with disease status were also included in the model as nuisance variables: sex, county of birth, current age or age at death (first- and second-order terms included), blood sample availability for the individual and an indicator function for the overlap of the lifetime of the individual with the timespan of phenotype collection.

As described previously¹⁶, given genotype counts for n individuals, $g_1, g_2, \dots, g_n \in \{0, 1, 2\}$, their phenotypes $y_1, y_2, \dots, y_n \in \{0, 1\}$ and a list of vectors of nuisance parameters x_1, x_2, \dots, x_n , the logistic regression model states that

$$L_i(\alpha, \beta, \gamma) = P(y_i = 1 | g_i, x_i)$$

$$\text{logit}(P(y_i = 1 | g_i, x_i)) = \alpha + \beta g_i + \gamma^T x_i, \text{ for all } i \in \{1, 2, \dots, n\},$$

where α, β and γ are the regression coefficients and L_i is the contribution of the i th individual to the likelihood function; $L(\alpha, \beta, \gamma) = \prod_{i=1}^n L_i(\alpha, \beta, \gamma)$. It is then possible to test for association based on the asymptotic assumption that the likelihood ratio statistic follows a χ^2 distribution with one degree of freedom:

$$2 \log \left(\frac{\max_{\alpha, \beta, \gamma} L(\alpha, \beta, \gamma)}{\max_{\alpha, \beta} L(\alpha, \beta = 0, \gamma)} \right) \sim \chi^2_1.$$

Given the computation cost of maximizing over the nuisance parameters for every marker in the genome, the likelihood was maximized under the null hypothesis of $\beta = 0$, which is the same for all markers, and use the maximizer of $\gamma, \tilde{\gamma}$, under the alternative. This method leads to a smaller likelihood ratio than maximizing over γ for every marker because $\max_{\alpha, \beta, \gamma} L(\alpha, \beta, \gamma) \geq \max_{\alpha, \beta} L(\alpha, \beta, \gamma = \tilde{\gamma})$.

Our analysis is based on imputed genotype values where the values of g_i are not known. Instead, we use $P(g_i = j | I_i)$ for $j \in \{0, 1, 2\}$, where I_i stands for the information about g_i . Given the logistic regression model above, this allows us to calculate

$$P(y_i = 1 | I_i) = \sum_{j=0}^2 P(g_i = j | I_i) P(y_i = 1 | g_i), \text{ for all } i \in \{1, 2, \dots, n\}.$$

Testing quantitative traits. To test for association between quantitative traits and sequence variants a generalized form of linear regression was used as described previously¹⁶. Let y be a vector of quantitative measurements, and let g be a vector of expected allele counts for the tested variant. Assuming the quantitative measurements follow a normal distribution with a mean that depends linearly on the expected allele at the variant and a variance covariance matrix proportional to the kinship matrix:

$$y \sim \mathcal{N}(\alpha + \beta g, 2\sigma^2 \Phi),$$

where

$$\Phi_{ij} \begin{cases} = \frac{1}{2}, & i = j \\ = 2k_{ij}, & i \neq j \end{cases}$$

is the kinship matrix as estimated from the Icelandic genealogical database. We split individuals with trait values into smaller clusters for the calculation as it is not

computationally feasible to use the full model. The maximum likelihood estimates for the parameters α , β and σ (ref. 2) involve inverting the kinship matrix. If there are n individuals in the cluster, then this inversion requires $O(n^3)$ calculations. However, because these calculations only need to be performed once, the computational cost of doing a genome-wide association scan will only be $O(n^2)$ calculations per variant, which is the cost of calculating the maximum likelihood estimates if the kinship matrix has already been inverted. The ALP measurements from the Danish Inter99 (ref. 54) study were tested using a generalized log-linear regression, assuming an additive genetic model, for association with allele count of rs34605986 using the R software package.

Adjusting for relatedness. Relatedness and stratification within the sample sets were accounted for as we previously described¹⁶ using the genomic control method⁵⁵. P values were adjusted by dividing the corresponding χ^2 value with an inflation factor λ_g estimated based on a set of about 300,000 common variants distributed across the genome

Inheritance models in association testing. The sum of the two imputed haplotype probabilities was used as a covariate for both the logistic regression and the generalized linear regression when testing for association under the additive model¹⁶. Where an individual was imputed to have the minor allele of a sequence variant with probability a_f on his paternal chromosome and a_m on his maternal chromosome, then $a_f + a_m$ was used as a covariate.

Conditional analysis. When testing a variant conditioning on the expected genotypes of another variant the analysis was carried out using the same software used in the GWAS analysis¹⁹.

Gene expression specificity classification. Genes were defined to have tissue-specific or tissue-enriched gene expression as described by Fagerberg *et al.*³¹ (ArrayExpress: E-MTABB-1773). Briefly, tissue-specific expression is defined as at least 50-fold higher FPKM (fragments per kilobase of exon per million fragments mapped) than all other tissues ($N=27$) and tissue-enriched expression is defined as at least fivefold higher FPKM than all other tissues.

References

- Scales, Jr. C. D., Smith, A. C., Hanley, J. M. & Saigal, C. S. Prevalence of kidney stones in the United States. *Eur. Urol.* **62**, 160–165 (2012).
- Uribarri, J., Oh, M. S. & Carroll, H. J. The first kidney stone. *Ann. Intern. Med.* **111**, 1006–1009 (1989).
- Edvardsson, V. O., Indridason, O. S., Haraldsson, G., Kjartansson, O. & Palsson, R. Temporal trends in the incidence of kidney stone disease. *Kidney Int.* **83**, 146–152 (2013).
- Moochhala, S. H., Sayer, J. A., Carr, G. & Simmons, N. L. Renal calcium stones: insights from the control of bone mineralization. *Exp. Physiol.* **93**, 43–49 (2008).
- Coe, F. L., Evan, A. & Worcester, E. Kidney stone disease. *J. Clin. Invest.* **115**, 2598–2608 (2005).
- Taylor, E. N., Stampfer, M. J. & Curhan, G. C. Dietary factors and the risk of incident kidney stones in men: new insights after 14 years of follow-up. *J. Am. Soc. Nephrol.* **15**, 3225–3232 (2004).
- Curhan, G. C., Willett, W. C., Rimm, E. B. & Stampfer, M. J. Family history and risk of kidney stones. *J. Am. Soc. Nephrol.* **8**, 1568–1573 (1997).
- McGeown, M. G. Heredity in renal stone disease. *Clin. Sci.* **19**, 465–471 (1960).
- Stechman, M. J., Loh, N. Y. & Thakker, R. V. Genetics of hypercalcaemic nephrolithiasis: renal stone disease. *Ann. N Y Acad. Sci.* **1116**, 461–484 (2007).
- Goldfarb, D. S., Fischer, M. E., Keich, Y. & Goldberg, J. A twin study of genetic and dietary influences on nephrolithiasis: a report from the Vietnam Era Twin (VET) Registry. *Kidney Int.* **67**, 1053–1061 (2005).
- Edvardsson, V. O., Palsson, R., Indridason, O. S., Thorvaldsson, S. & Stefansson, K. Familiality of kidney stone disease in Iceland. *Scand. J. Urol. Nephrol.* **43**, 420–424 (2009).
- Monico, C. G. & Milliner, D. S. Genetic determinants of urolithiasis. *Nat. Rev. Nephrol.* **8**, 151–162 (2012).
- Thorleifsson, G. *et al.* Sequence variants in the CLDN14 gene associate with kidney stones and bone mineral density. *Nat. Genet.* **41**, 926–930 (2009).
- Urabe, Y. *et al.* A genome-wide association study of nephrolithiasis in the Japanese population identifies novel susceptible loci at 5q35.3, 7p14.3, and 13q14.1. *PLoS Genet.* **8**, e1002541 (2012).
- Gudbjartsson, D. F. *et al.* Sequence variants from whole genome sequencing a large group of Icelanders. *Sci. Data* **2**, 150011 (2015).
- Gudbjartsson, D. F. *et al.* Large-scale whole-genome sequencing of the Icelandic population. *Nat. Genet.* **47**, 435–444 (2015).
- Kong, A. *et al.* Parental origin of sequence variants associated with complex diseases. *Nature* **462**, 868–874 (2009).
- Kong, A. *et al.* Detection of sharing by descent, long-range phasing and haplotype imputation. *Nat. Genet.* **40**, 1068–1075 (2008).
- Styrkarsdottir, U. *et al.* Nonsense mutation in the LGR4 gene is associated with several human diseases and other traits. *Nature* **497**, 517–520 (2013).
- Orimo, H. *et al.* Mutational analysis and functional correlation with phenotype in German patients with childhood-type hypophosphatasia. *J. Bone Miner. Res.* **16**, 2313–2319 (2001).
- Whyte, M. P. Hypophosphatasia and the role of alkaline phosphatase in skeletal mineralization. *Endocr. Rev.* **15**, 439–461 (1994).
- Kestenbaum, B. *et al.* Common genetic variants associate with serum phosphorus concentration. *J. Am. Soc. Nephrol.* **21**, 1223–1232 (2010).
- Chambers, J. C. *et al.* Genome-wide association study identifies loci influencing concentrations of liver enzymes in plasma. *Nat. Genet.* **43**, 1131–1138 (2011).
- Okada, Y. *et al.* Meta-analysis identifies multiple loci associated with kidney function-related traits in east Asian populations. *Nat. Genet.* **44**, 904–909 (2012).
- Sveinbjornsson, G. *et al.* Rare mutations associating with serum creatinine and chronic kidney disease. *Hum. Mol. Genet.* (2014).
- Exome Aggregation Consortium (ExAC). (Cambridge, MA, 20-11-2014).
- Finn, R. D. *et al.* Pfam: clans, web tools and services. *Nucleic Acids Res.* **34**, D247–D251 (2006).
- Cooper, G. M. *et al.* Distribution and intensity of constraint in mammalian genomic sequence. *Genome Res.* **15**, 901–913 (2005).
- Adzhubei, I. A. *et al.* A method and server for predicting damaging missense mutations. *Nat. Methods* **7**, 248–249 (2010).
- Kumar, P., Henikoff, S. & Ng, P. C. Predicting the effects of coding non-synonymous variants on protein function using the SIFT algorithm. *Nat. Protoc.* **4**, 1073–1081 (2009).
- Fagerberg, L. *et al.* Analysis of the human tissue-specific expression by genome-wide integration of transcriptomics and antibody-based proteomics. *Mol. Cell. Proteomics* **13**, 397–406 (2014).
- Murer, H., Hernando, N., Forster, I. & Biber, J. Proximal tubular phosphate reabsorption: molecular mechanisms. *Physiol. Rev.* **80**, 1373–1409 (2000).
- Murer, H., Forster, I. & Biber, J. The sodium phosphate cotransporter family SLC34. *Pflugers Arch* **447**, 763–767 (2004).
- Segawa, H. *et al.* Npt2a and Npt2c in mice play distinct and synergistic roles in inorganic phosphate metabolism and skeletal development. *Am. J. Physiol. Renal Physiol.* **297**, F671–F678 (2009).
- Gong, Y. *et al.* Claudin-14 regulates renal Ca(+) (+) transport in response to CaSR signalling via a novel microRNA pathway. *EMBO J.* **31**, 1999–2012 (2012).
- Riccardi, D. *et al.* Localization of the extracellular Ca²⁺/polyvalent cation-sensing protein in rat kidney. *Am. J. Physiol.* **274**, F611–F622 (1998).
- Riccardi, D. & Brown, E. M. Physiology and pathophysiology of the calcium-sensing receptor in the kidney. *Am. J. Physiol. Renal Physiol.* **298**, F485–F499 (2010).
- Hebert, S. C., Brown, E. M. & Harris, H. W. Role of the Ca(2+) -sensing receptor in divalent mineral ion homeostasis. *J. Exp. Biol.* **200**, 295–302 (1997).
- Vezzoli, G. *et al.* Calcium-sensing receptor and calcium kidney stones. *J. Transl. Med.* **9**, 201 (2011).
- Kapur, K., Johnson, T., Beckmann, N. D., Sehmi, J. & Tanaka, T. *et al.* Genome-wide meta-analysis for serum calcium identifies significantly associated SNPs near the calcium-sensing receptor (CASR) gene. *PLoS Genet.* **6**, e1001035 (2010).
- O'Seaghdha, C. M. *et al.* Common variants in the calcium-sensing receptor gene are associated with total serum calcium levels. *Hum. Mol. Genet.* **19**, 4296–4303 (2010).
- Canaff, L. & Hendy, G. N. Human calcium-sensing receptor gene. Vitamin D response elements in promoters P1 and P2 confer transcriptional responsiveness to 1,25-dihydroxyvitamin D. *J. Biol. Chem.* **277**, 30337–30350 (2002).
- Yeh, B. I., Kim, Y. K., Jabbar, W. & Huang, C. L. Conformational changes of pore helix coupled to gating of TRPV5 by protons. *EMBO J.* **24**, 3224–3234 (2005).
- Renkema, K. Y. *et al.* TRPV5 gene polymorphisms in renal hypercalcaemia. *Nephrol. Dial. Transplant.* **24**, 1919–1924 (2009).
- Hoenderop, J. G. *et al.* Renal Ca²⁺ wasting, hyperabsorption, and reduced bone thickness in mice lacking TRPV5. *J. Clin. Invest.* **112**, 1906–1914 (2003).
- Loh, N. Y. *et al.* Autosomal dominant hypercalcaemia in a mouse model due to a mutation of the epithelial calcium channel, TRPV5. *PLoS ONE* **8**, e55412 (2013).
- Muller, D., Hoenderop, J. G., Merx, G. F., van Os, C. H. & Bindels, R. J. Gene structure and chromosomal mapping of human epithelial calcium channel. *Biochem. Biophys. Res. Commun.* **275**, 47–52 (2000).
- Muller, D. *et al.* Epithelial Ca(2+) channel (ECAC1) in autosomal dominant idiopathic hypercalcaemia. *Nephrol. Dial. Transplant.* **17**, 1614–1620 (2002).
- Chen, J. *et al.* Identification of a single missense mutation in the adenine phosphoribosyltransferase (Aprt) gene from 5 icelandic patients and a british patient. *Am. J. Hum. Genet.* **49**, 1306–1311 (1991).
- Edvardsson, V., Palsson, R., Olafsson, I., Hjaltadottir, G. & Laxdal, T. Clinical features and genotype of adenine phosphoribosyltransferase deficiency in Iceland. *Am. J. Kidney Dis.* **38**, 473–480 (2001).

51. Vezzoli, G. *et al.* Decreased transcriptional activity of calcium-sensing receptor gene promoter 1 is associated with calcium nephrolithiasis. *J. Clin. Endocrinol. Metab.* **98**, 3839–3847 (2013).
52. McLaren, W. *et al.* Deriving the consequences of genomic variants with the Ensembl API and SNP Effect Predictor. *Bioinformatics* **26**, 2069–2070 (2010).
53. Flicek, P. *et al.* Ensembl 2012. *Nucleic Acids Res.* **40**, D84–D90 (2012).
54. Jorgensen, T. *et al.* A randomized non-pharmacological intervention study for prevention of ischaemic heart disease: baseline results Inter99. *Eur. J. Cardiovasc. Prev. Rehabil.* **10**, 377–386 (2003).
55. Devlin, B. & Roeder, K. Genomic control for association studies. *Biometrics* **55**, 997–1004 (1999).

Acknowledgements

We thank the individuals who participated in the study and whose contributions made this work possible. We thank our valued colleagues who contributed to data collection, sample handling and genotyping. V. Edvardsson and R. Palsson are supported by the Rare Kidney Stone Consortium (5U54DK083908-07), a part of the National Center for Advancing Translational Sciences (NCATS) Rare Diseases Clinical Research Network (RDCRN). RDCRN is an initiative of the Office of Rare Diseases Research (ORDR). The Rare Kidney Stone Consortium is funded through a collaboration between NCATS and National Institute of Diabetes and Digestive and Kidney Diseases (NIDDK).

Author contributions

A.O., P.S., H.He., D.F.G., U.T., and K.S. designed the study and interpreted the results. A.O., V.O.E., R.P., O.S.I., G.I.E., O.S., I.O. and H.Ho. carried out the subject ascertainment and recruitment. A.O., H.He. and P.S. performed the sequencing,

genotyping and expression analyses. A.O., P.S., H.Ho., G.S., G.T., D.F.G. and G.M. performed the statistical and bioinformatics analyses. A.O., P.S., H.He., E.H., U.T. and K.S. drafted the manuscript. All authors contributed to the final version of the paper.

Additional information

Supplementary Information accompanies this paper at <http://www.nature.com/naturecommunications>

Competing financial interests: A.O., P.S., H.He., G.T., G.S., E.H., G.M., H.Ho., D.F.G., U.T. and K.S. who are affiliated with deCODE genetics/Amgen declare competing financial interests as employees. The remaining authors declare no competing financial interests.

Reprints and permission information is available online at <http://npg.nature.com/reprintsandpermissions/>

How to cite this article: Oddsson, A. *et al.* Common and rare variants associated with kidney stones and biochemical traits. *Nat. Commun.* **6**:7975 doi: 10.1038/ncomms8975 (2015).



This work is licensed under a Creative Commons Attribution 4.0 International License. The images or other third party material in this article are included in the article's Creative Commons license, unless indicated otherwise in the credit line; if the material is not included under the Creative Commons license, users will need to obtain permission from the license holder to reproduce the material. To view a copy of this license, visit <http://creativecommons.org/licenses/by/4.0/>