

ARTICLE

Received 5 Aug 2015 | Accepted 4 Nov 2015 | Published 16 Dec 2015

DOI: 10.1038/ncomms10105

OPEN

The propagation of perturbations in rewired bacterial gene networks

Rebecca Baumstark^{1,2}, Sonja Hänzelmann^{3,4}, Saburo Tsuru⁵, Yolanda Schaeerli^{1,2}, Mirko Francesconi^{1,2}, Francesco M. Mancuso^{1,6}, Robert Castelo^{3,4} & Mark Isalan^{1,2,7}

What happens to gene expression when you add new links to a gene regulatory network? To answer this question, we profile 85 network rewirings in *E. coli*. Here we report that concerted patterns of differential expression propagate from reconnected hub genes. The rewirings link promoter regions to different transcription factor and σ -factor genes, resulting in perturbations that span four orders of magnitude, changing up to $\sim 70\%$ of the transcriptome. Importantly, factor connectivity and promoter activity both associate with perturbation size. Perturbations from related rewirings have more similar transcription profiles and a statistical analysis reveals ~ 20 underlying states of the system, associating particular gene groups with rewiring constructs. We examine two large clusters (ribosomal and flagellar genes) in detail. These represent alternative global outcomes from different rewirings because of antagonism between these major cell states. This data set of systematically related perturbations enables reverse engineering and discovery of underlying network interactions.

¹EMBL/CRG Systems Biology Research Unit, Centre for Genomic Regulation (CRG), Dr Aiguader 88, 08003 Barcelona, Spain. ²Universitat Pompeu Fabra (UPF), Dr Aiguader 88, 08003 Barcelona, Spain. ³Research Program on Biomedical Informatics (GRIB), Hospital del Mar Medical Research Institute (IMIM), Dr Aiguader 88, 08003 Barcelona, Spain. ⁴Department of Experimental and Health Sciences, Universitat Pompeu Fabra, Dr Aiguader 88, 08003 Barcelona, Spain. ⁵Department of Bioinformatic Engineering, Graduate School of Information Science and Technology, Osaka University, 1-5 Yamadaoka, Suita, Osaka 565-0871, Japan. ⁶Genomics Cancer Group, Vall d'Hebron Institute of Oncology (VHIO), Carrer Natzaret 15-17, 08035 Barcelona, Spain. ⁷Department of Life Sciences, Imperial College London, London SW7 2AZ, UK. Correspondence and requests for materials should be addressed to M.I. (email: m.isalan@imperial.ac.uk).

One aim of systems biology is to have a predictive understanding of biological systems, such that the effects of altering one or more components could be inferred a priori. *Escherichia coli* is one of the best studied organisms, and detailed regulatory network databases, such as RegulonDB¹ and EcoCyc², ultimately promise a complete description of all the connections between genes in the system^{3,4}. Moreover, detailed metabolic network models have also been developed^{5,6}, some incorporating transcriptional regulation⁷. Therefore it is reasonable to ask to what extent these network descriptions give us any predictive power over the effect of perturbations at one or more nodes of the network.

Although most large-scale perturbation studies have relied on environmental alterations, gene knockouts and—to a lesser extent—gene overexpression^{4,8}, we previously described a complementary way of tinkering with *E. coli* transcription networks, namely by rewiring or adding new network connections⁹. By introducing fusions between promoter regulatory regions and open reading frames of transcription factors or σ -factors (TF ORFs), it is possible to connect all the inputs to a regulatory region to the downstream targets of the TF (Fig. 1). The result is that parallel network cascades can be linked with new cross-talks (Fig. 1b), and that new feedbacks can also be introduced (Fig. 1c). These new ‘links’ are added on top of the existing network and can result in large, complicated rewirings.

In our previous work⁹, we built ~600 rewired networks and showed that the vast majority results in viable cells, even when reconnecting ‘hub genes’ that control hundreds or even thousands of other genes. This demonstrated that *E. coli* is highly tolerant of new regulatory connectivity that could result from evolutionary gene duplication, drift and deletion^{10,11}. However, it was unclear how the resulting transcriptome perturbations spread across the whole network. From the only two examples assayed for differential expression using microarrays, *rpoS-ompR* had 10 out of ~4,000 genes changed, whereas *malT-flhA* had 975 (using <5% false discovery rate¹²). There was evidence that FlhA was upregulating flagellar machinery, as expected, but *rpoS-ompR* was difficult to explain in terms of annotated network interactions. Therefore, the two cases were quite different and it was unknown how the other rewired networks would behave.

In this study, we carry out gene expression profiling on 85 rewired networks, in biological triplicates, chosen to cover a range of related perturbations. Each promoter- and -ORF is sampled in the context of several different rewirings and is chosen to span a range of GFP expression values and growth phenotypes (see, for example, Fig. 2 of the original publication⁹; a GFP reporter is added as a second cistron to each promoter-ORF

transcript). This enables us to report here the first comprehensive analysis of the propagation of changes across a rewired system, under defined conditions.

Results

Generating the rewired transcriptome networks. First, the 85 chosen gene network rewiring plasmids were transformed into *E. coli* and grown under standardized conditions (see Methods). Biological triplicates (separate colonies) of each population were subjected to RNA transcriptome analysis, using microarrays, and each promoter-ORF network was compared with a ‘wild-type’ reference standard (Co; Control). The differentially expressed genes were analysed to determine the scale and type of network perturbations. Taking a global view, the rewired networks produce perturbations spanning over four orders of magnitude, from 0 to thousands of differentially expressed genes (Fig. 2).

The log₂-transformed fold gene expression data comprise a matrix of 85 rewired networks by 3,891 genes (MG1655 genes with Entrez IDs; Supplementary Data 1). This matrix provides a detailed view of rewiring perturbations, from which one can derive general patterns. As expected, the rewired ORF (-ORF) is the most differentially expressed gene in 72 out of 77 (93%) promoter-ORF combinations (the eight promoter-only control constructs are not included in this analysis because they do not express -ORFs). For two promoters, the -ORF is the second-most differentially expressed gene because the promoters contain embedded transcripts. Thus, *hycA* is most upregulated in *hypA-crp* and *hypA-hns*. Similarly, *rpoS-* promoters contain a highly expressed *nlpD* leader transcript. Overall, however, the greatest expression level changes originate from the -ORFs (2- to 600-fold; median: 13-fold; Supplementary Data 1).

Transcriptome perturbations and promoter or ORF properties.

Since we rewired genes with variable connectivity within the known regulatory hierarchy of *E. coli*, an open question was whether the more-connected genes would make bigger perturbations. We tested whether there was a correlation between the ORF mean transcriptome perturbations and -ORF out degree (direct connections from RegulonDB 7.2 (ref. 1)). We found a significant correlation ($R = 0.61$, $P = 0.002$ (analysis of variance (ANOVA) F-test for linear regression; Supplementary Table 1). Overall, -ORF connectivity may explain ~37% of the variance in mean transcription perturbation.

Promoters are also associated with rewiring perturbation sizes. There is a significant correlation between promoter activity (measured by quantitative real-time PCR (qRT-PCR) of the promoter-only constructs) and mean transcriptome perturbations

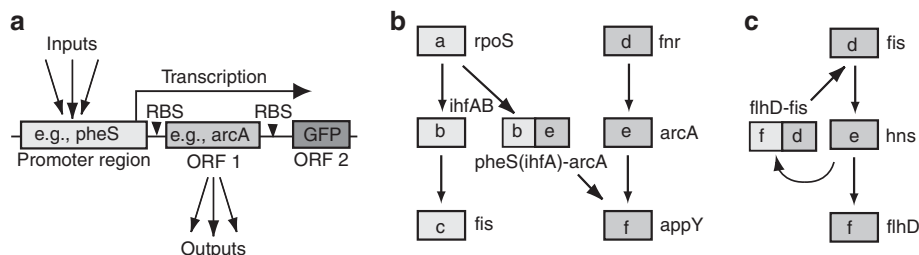


Figure 1 | Rewiring the network by adding shuffled promoter-ORF combinations. (a) Plasmid constructs containing a promoter regulatory region, linked to a different ORF (transcription regulator or sigma factor), create new network links. A GFP ORF with an independent ribosome binding site (RBS) acts as a reporter. (b) Parallel pathways (‘a-b-c’ and ‘d-e-f’) can be linked together with a rewiring construct, b-e. The inputs to the promoter ‘b’ now output through the ORF ‘e’. Examples of actual gene regions used in this study are written next to the gene boxes. (c) Promoter regions downstream of their new partner ORF can create new feedback loops. The linear ‘d-e-f’ pathway is converted to a feedback loop, by adding the ‘f-d’ construct, such that the inputs into ‘f’ now output through ‘d’.

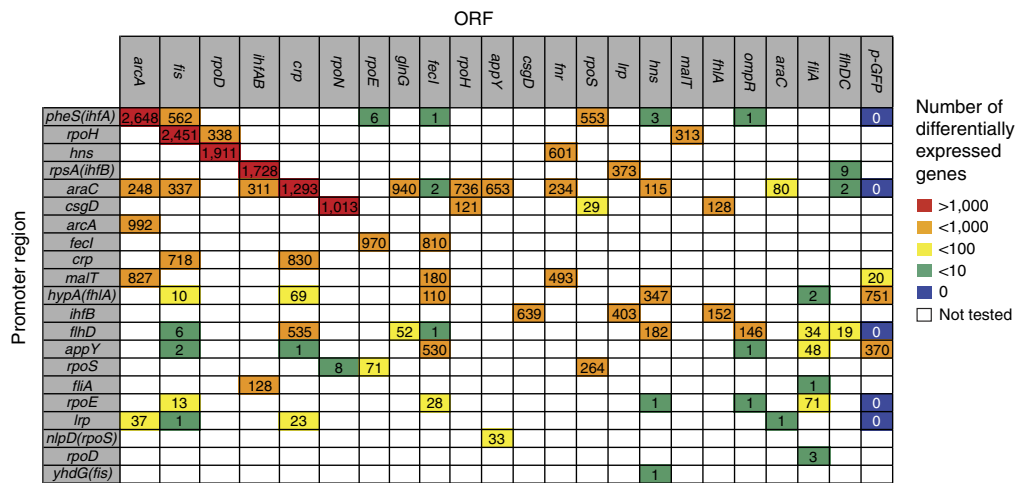


Figure 2 | Global view of the number of differentially expressed genes (DEG) in each of the 85 rewired networks. Microarrays in triplicate repeats identified DEG (>1.2-fold change; 5% false discovery rate). Genes were limited to the 3,891 annotated MG1655 *E. coli* genes with unique Entrez Gene IDs, as identified by the R Bioconductor package *ecoli2.db* (ref. 54). The numbers of network perturbations are sorted top-bottom and left-right by the largest perturbations of individual promoters and ORFs. For example, *pheS-arcA* has 2,648 out of 3,891 genes perturbed (top left).

per promoter ($R = 0.58$, $P = 0.006$ (ANOVA F-test); Supplementary Table 2). This is also true when correlating mean transcriptome perturbations to protein expression per promoter, using western blot data⁹ ($R = 0.55$; $P = 0.009$ (ANOVA F-test); Supplementary Table 2). Overall, promoter expression levels may explain ~30–33% of the variance in mean transcription perturbation.

Promoter effects without linked transcription factors. ‘Promoter-only’ constructs contain GFP instead of a transcription factor -ORF and test for potential confounding effects such as high exogenous transcription, GFP-expression, or transcription factor titration by the regulatory region. Of the eight promoter-only constructs, five have zero perturbations, including some of the highest expression clones such as *arcA-0* (Supplementary Data 1). Thus, the majority of promoters do not alter the transcriptomes by themselves (Fig. 2; ‘p-GFP’ column). Furthermore, we see no evidence of transcription factors being systematically titrated to alter the transcriptome (using EcoCyc promoter-binding annotations).

Two promoter-only clones make large perturbations: *hypA-0* (751) and *appY-0* (370) are quite similar, with 273 perturbations in common, including hydrogenase operon downregulations (*hyc*, *hyd*, *hyf* and *hya*) and osmotic signalling upregulations (*osmBCEFY*). *hypA-* contains an embedded antiparallel *hycA* ORF in the promoter, which is expressed in *hypA-* constructs and may account for the states of the hydrogenase operons. The smaller perturbation in *appY-0* is more difficult to explain, but shares the features of upregulated master regulators *rpoS*, *crp* and *crl*. Notably, *crl* stimulates RpoS activity during stationary phase¹³, which regulates *osm* genes. Several networks share this apparent gene expression state (Fig. 3; *crl* cluster). Because one aim in this study was to identify such common underlying states, and the key perturbations required to achieve them, we looked for such states by clustering the rewired constructs.

Clustering is driven by promoter and ORF identity. We sorted the 85 networks by hierarchical clustering into groups with common patterns of transcriptome perturbation. Clustering allowed visualization of common reproducible states of the system: groups of whole operons and gene families which are up- or downregulated. We chose a correlation measure-based distance

(Fig. 3, uncentred, average distance UPMGA; EPCLUST¹⁴; Supplementary Data 1). Importantly, clones were often grouped in columns according to promoter- and -ORF identity, and genes of similar pathways or function were grouped in rows. This shows that the introduced genetic perturbations (promoter-ORF fusions) drive the clustering.

Promoter- clusters are a relatively minor feature (for example, *rpoS-*, *hypA-*, *araC-*; Fig. 3). Some occur because of highly transcribed RNA sequences in the promoter regions, such as *nlpD* in *rpoS-* or *hycA* in *hypA-*. Alternatively, the *araC-* promoter is one of the strongest in our study⁹ and leads to larger perturbations (Fig. 2), which also cluster.

-ORF clusters are the most prominent feature of the correlation-based clustering (for example, -*fliA*, -*flhDC*, -*fecI*; Fig. 3). Nearly every -ORF has a characteristic RNA expression level (for example, -*fecI* is 13- to 15-fold upregulated; -*arcA* is 9- to 10-fold; Supplementary Data 1). As we observed previously⁹, ORFs appear to have a strong role in setting their own RNA and GFP protein expression levels, regardless of promoter identity. Therefore ORF expression control is not confined to the promoter regions.

Similar -ORF expression levels can lead to very different network perturbations. For example, *pheS-fis* (562 perturbations) and *lrp-fis* (1 perturbation), both have ~17-fold *fis* RNA upregulation (Supplementary Data 1). Growth and expression (GFP-output) time courses reveal that these two networks have slightly different growth and protein expression dynamics (Supplementary Fig. 1), which results in very different transcriptomes. Differences can also be seen in *pheS-arcA* (2,649 perturbations) and *arcA-arcA* (992), which cannot be simply explained by a similar ~10-fold upregulation of ArcA (Supplementary Fig. 2). Overall, it is imperative to consider each construct disrupting the network as a function of both promoter- and -ORF identity.

Master regulators correlate with a ribosomal gene cluster. To see whether we could explain features of the transcriptome states for particular rewiring combinations, we next examined major clusters to look for common patterns of regulation.

The largest cluster in our study contains ~125 upregulated ribosomal, ATP synthetase and tRNA genes and is associated with ~25 rewiring constructs that make large perturbations

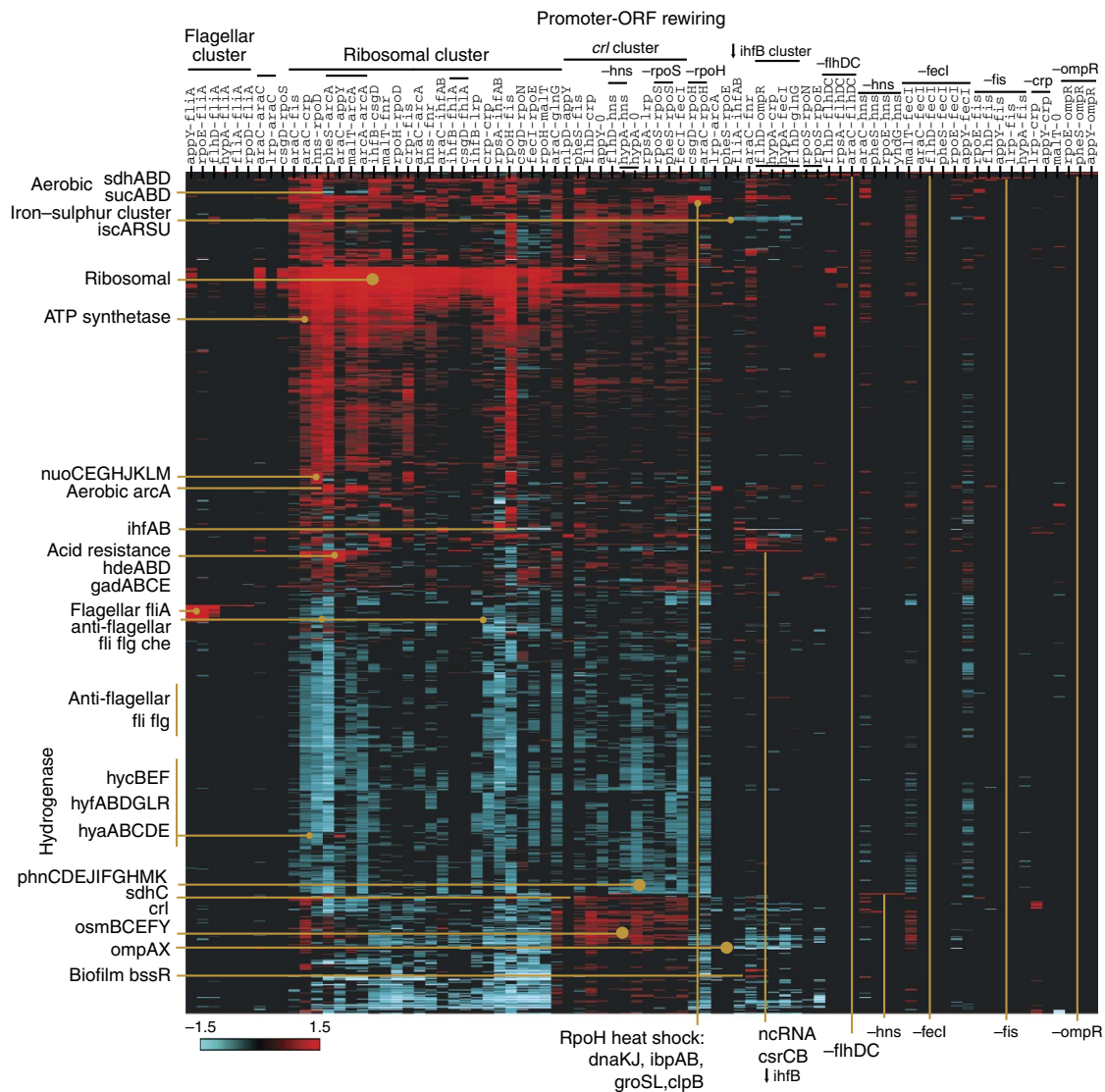


Figure 3 | Hierarchical clustering of differential expression in rewired gene networks reveals clusters of concerted gene expression. Upregulated genes are in red; downregulated in blue. The 85 networks (columns) and 3,891 MG1655 *E. coli* genes (rows) were clustered by a correlation measure-based distance (uncentred, average distance UPMGA; EPCLUST¹⁴). The scale uses log₂-transformed fold changes, relative to the control Co. Patterns or clusters of differential expression (for example, flagellar cluster and ribosomal cluster) are indicated, together with selected genes and operons. For display purposes, the five clones with zero changes are omitted (araC-0, flhD-0, pheS-0, rpoE-0, lrp-0); only 1,115 genes are displayed vertically, by filtering for genes which are differentially expressed in at least five networks and with an absolute sum differential expression > 4. The full gene list and clustering are in Supplementary Data 1.

(‘ribosomal cluster’; Fig. 3; Supplementary Data 1). These include 9 out of 13 araC- clones, four of five -arcA clones and both -rpoD clones, with perturbations ranging from 29–2,648 genes (median 646). Although the -ORFs involved are highly connected (for example, CRP, Fis, ArcA and IHFAB) and control hundreds of genes¹, there was no immediate explanation as to why only certain rewired combinations have these effects. We, therefore, set out to find any common controlling factors between these apparently disparate rewired networks.

When clustering the data (Supplementary Data 1), we found that several master regulators were consistently differentially expressed in the ribosome cluster. To assess levels of association between expression level changes of regulator genes and the ribosomal state, we used linear regression. We compared the correlation between the log₂ fold-expression level of each of the 3,891 genes and the sum of log₂ fold-expression of a set of ribosomal genes, across the rewired networks. To achieve this, we

selected a representative set of ~125 ribosomal cluster genes, excluding potential regulators in the set (ribosomal cluster; Supplementary Data 1). The correlation coefficients thus gave a ‘ribosomal score’ for the dose-dependent association of potential regulators with the ribosome cluster (Fig. 4a).

The four most-correlated potential regulators and sensors were the stringent starvation proteins *sspA* ($R = 0.90$, $P < 0.001$ (ANOVA F-test)) and *sspB* ($R = 0.80$, $P < 0.001$), *ompC* (porin, periplasmic sensor pathway protein¹⁵; $R = 0.86$, $P < 0.001$) and *gcvB* (regulatory RNA for acid resistance, amino acid transport and biosynthesis; $R = 0.82$, $P < 0.001$). Strikingly, *sspAB* and *ompC* levels could additively account for ~86% of the variation in the ribosome cluster genes (Fig. 4b).

Other master regulators implicated in ribosomal biosynthesis also correlated with the ribosomal cluster in varying degrees (Fig. 4a). These included RpoH (σ 32 for heat stress, drives *rrn* P1 ribosomal gene promoters^{16,17}), RpoS (σ 38 for stationary phase

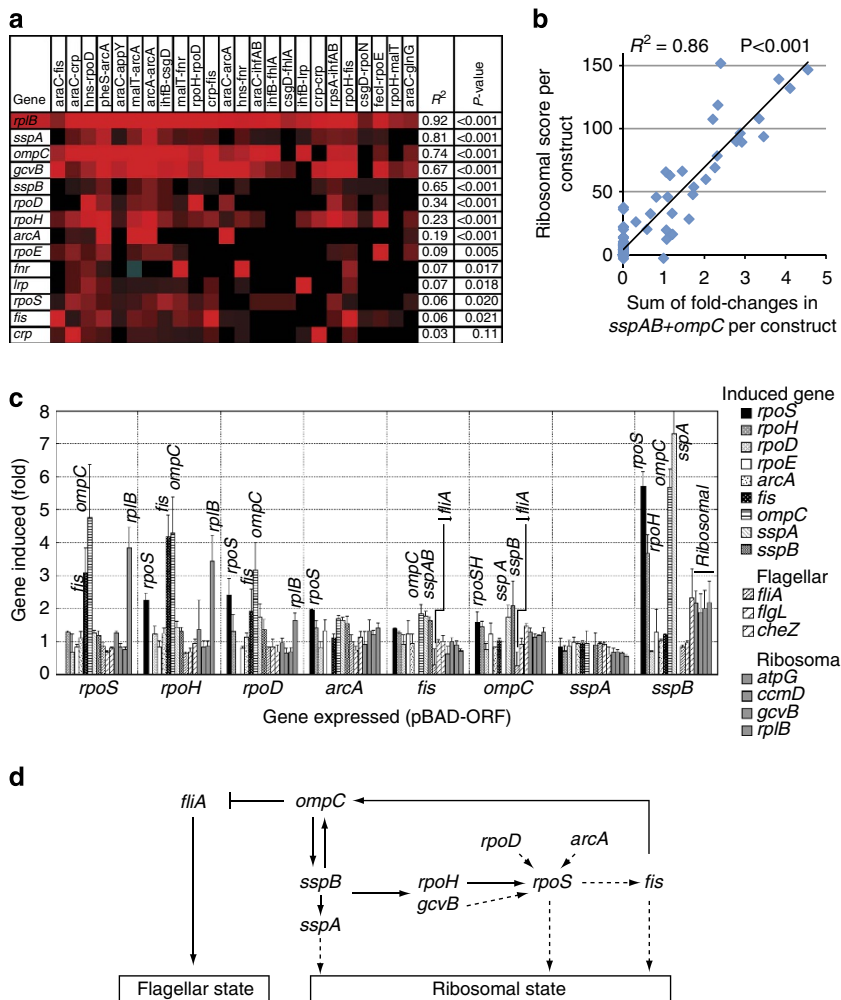


Figure 4 | Expressing regulators that are correlated with the ribosome cluster is sufficient to induce ribosomal genes. (a) Expression heatmap of ribosomal cluster constructs versus the most-correlated sensor and regulator genes. The *rplB* gene is a representative ribosomal gene. Correlation coefficients (R^2) are calculated by comparing the log2 fold-expression change of each gene, over each of the 85 constructs, versus the ‘ribosomal score’ of each construct (a sum of ~125 ribosomal cluster genes, excluding regulators). (b) The regulators *sspAB* and *ompC* together could account for ~86% of the variation seen in ribosome cluster genes. Other combinations of correlated factors do not associate as highly. (c) Eight cluster-associated regulator ORFs were expressed using the pBAD system (Invitrogen). qRT-PCR showed which of 16 genes were subsequently induced or repressed: σ -factors (*rpoSHDE*), master regulators (*arcA*, *fis*), periplasmic shock sensor (*ompC*), stringent starvation proteins (*sspAB*), flagellar genes (*fliA*, *flgL*, *cheZ*) and ribosomal cluster markers (*atpG*, *ccmD*, *gcvB*, *rplB*). (d) A minimum set of interactions (not necessarily direct) can be inferred from the qRT-PCR data, summarizing mutual upregulation of ribosomal state regulators. Dotted arrows indicate interactions reported in the literature.

and acid resistance, implicated in ribosomal gene expression^{18,19}, RpoD (σ 70 for housekeeping and heat stress, drives many ribosomal promoters) and *fis* (Fis binding sites are found in *rrn* P1 ribosomal gene promoters¹⁶). To see which of these factors were necessary or sufficient to induce the ribosomal state in rewiring constructs, we induced their expression in *E. coli*.

Expressing correlated master regulators upregulates ribosomes.

Figure 4c shows that upregulation of key factors, using arabinose-inducible pBAD expression clones, could drive the cells towards a state with high ribosomal cluster gene expression. The gene that induced the strongest ribosomal response was *sspB*, which upregulated all the four ribosomal cluster genes assayed. *sspB* induced its partner *sspA*, but not vice versa. *sspA* and *sspB* are upregulated by carbon, amino acid and phosphate starvation and help ClpXP protease to degrade stalled protein synthesis²⁰. *sspA* and *sspB* are sensor genes, thus linking potential metabolic perturbations to the ribosomal cluster response. *sspB* also upregulated *ompC* (and vice versa) demonstrating that the correlated genes in our regression analysis were indeed sufficient to elicit the ribosomal state.

We were unable to clone a pBAD-construct of *gcvB* (highly correlated with the ribosome cluster), which indicates that this noncoding RNA regulator may be toxic in this vector. Expression of *sspB* was, however, sufficient to upregulate *gcvB* and all the other ribosomal gene markers (Fig. 4c), indicating that *gcvB* is downstream of *sspB* in this regulatory network.

Expression of *arcA* directly upregulated ribosomal cluster master control genes (*ompC*, *sspAB*, *rpoHS*), as did expression of *rpoD* (*rpoS*, *fis*, *ompC*, *sspAB*). This is consistent with four -*arcA* clones and two -*rpoD* clones being in the ribosome cluster.

Mutually upregulating factors induce the ribosome cluster.

The results of pBAD-ORF expression are compatible with a circuit of mutual upregulation of a few master regulators that together achieve the ribosome state: *rpoH* induces *rpoS*, *fis* and *ompC*; *rpoS* induces *fis* and *ompC*; *fis* induces *ompC* and *sspAB*; *ompC* induces *sspAB* and *rpoHS*; *sspB* induces *rpoHS* and *ompC* (a minimal pruned set of inferred relationships is presented in Fig. 4d). Many of these interactions (for example, *rpoD*–*rpoS*,

arcA-rpoS and *rpoS-fis* are already well established¹ and are indeed compatible with a recent effort to define a comprehensive sigma factor network in *E. coli*²¹.

As these factors are all interconnected (not necessarily directly), the ribosomal state would imply an ‘attractor basin’ within the transcriptional states caused by positive feedback between factors²². Thus, relatively small perturbations caused by expressing highly connected TFs (for example, CRP, Lrp, IHFAB) could begin to perturb key players in the system, such as *ompC*, *sspB*, *rpoDSH*, and start the cascade towards this upregulated state.

In certain cases, direct expression of the actual -ORF is the simplest explanation for the state seen: -*arcA* and -*rpoD* constructs upregulate the *ompC:sspAB* cascade, and also directly control ribosomal genes such as *rplB* (EcoCyc). However, in other cases, such as *araC-crp* or *araC-ihfAB*, the interaction is more indirect: factors that are uncorrelated to the ribosome cluster (for example, CRP, IHFAB), when expressed under a strong *araC*- promoter, are sufficient to perturb genes such as *rpoSH*, *ompC*, *sspB* and so on, to drive the response. Ultimately, the same set of identified regulatory genes is upregulated.

Adding amino acids reproduces ribosomal state features. The ribosomal cluster response defines a large potential state of the system and so we investigated whether perturbations other than rewiring could induce it. Understanding the control of ribosomal biosynthesis is a major goal in itself (reviewed in ref. 17) and the ribosomal cluster is reminiscent of a classic ‘shift-up’ response, caused by adding amino acids after starvation. Starvation produces the stringent response metabolite ppGpp, which reduces RNA polymerase activity at P1 ribosomal promoters^{23–25}; adding nutrients can reverse this.

We tested whether simply adding additional amino acids to growth medium would induce key ribosomal factors for both control cells (Co), and for a construct with a strong promoter but low perturbation (*araC-0*; Fig. 5a). We found that certain amino acids (PEKATGNI) increase the ribosomal state genes in both genetic backgrounds. Adding other amino acids (FHDL) had little effect and was comparable to no addition. In conclusion, alterations in the availability of a subset of amino acids can reproduce the key features of the ribosomal state. Thus, altered amino acid availability, direct transcription perturbation via known regulators (for example, -*arcA* clones) and indirect perturbations (for example, *araC-crp*) are all ways of achieving the state.

Higher growth rates in large-perturbation ribosomal clones. Recent work has shown that growth rates are intimately connected with gene expression changes, and faster growth is associated with greater ribosomal expression^{26,27}. However, slow growing *E. coli* (for example, in glucose-limiting conditions) also upregulate ribosomes and break the general rule of ribosome biosynthesis being proportional to the square of growth rate^{17,28}. Therefore, both slower and faster growth might also be expected to induce the ribosomal state, relative to the reference state (Co). In fact, we found that rewired constructs with high ribosomal gene expression do have altered growth (Fig. 5b and Supplementary Fig. 3).

Strikingly, two highly perturbed clones have higher growth rates than the control, and higher final optical densities: *pheS-arcA* (2,648 perturbations) and *araC-crp* (1,293). Notably, *pheS-arcA* is the most-altered clone in our study and yet—even with ~70% of its transcriptome perturbed—the system appears to be able to reach a ‘super’ growth state, higher than wild type. These ribosomal clones may thus reflect a biological response to a

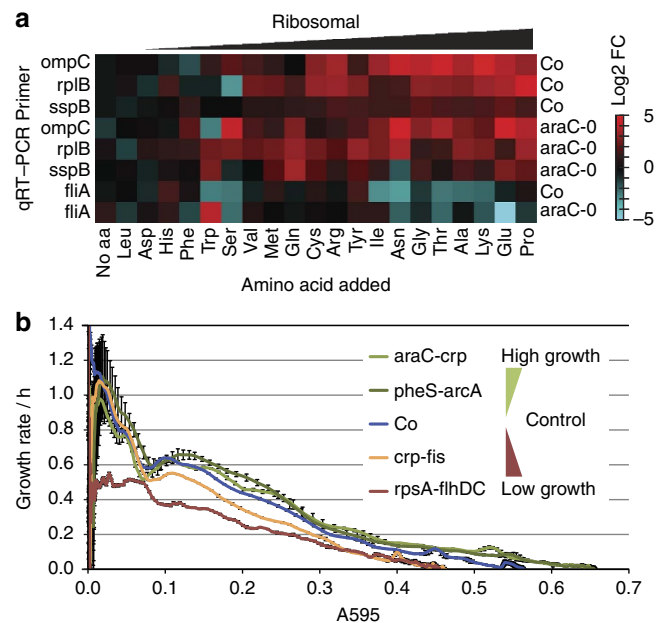


Figure 5 | Amino acids affect ribosomal gene expression whereas growth rates do not correlate with the ribosomal state. (a) Adding 5 mM of individual amino acids generally increases ribosomal state marker genes and decreases *fliA*. qRT-PCR data are the means of three biological replicates (16 h growth) and are log₂-transformed fold change, relative to levels in Co control in LB. (b) Growth rates at each A₅₉₅ (absorbance at 595 nm) point in the growth curves of three ribosomal constructs and Co (Growth rate = $d(\ln A_{595})/dt$; h⁻¹). The ribosomal clone *pheS-arcA* (2,648 perturbations) actually grows faster and with a higher final optical density than Co. A slow-growing non-ribosomal *rpsA-flhDC* clone is included for comparison. Data are the means of three independent replicates with 1 s.d. error bars.

more nutrient-rich state, in which the cells prepare more biosynthetic machinery and can grow faster.

Conversely, a key observation is that flagellar genes are downregulated in many ribosomal clones (Fig. 3; ‘anti-flagellar’ cluster). Expressing flagellar genes incurs a high metabolic cost and is required when the cells need motility to find new resources in nutrient-poor conditions²⁹. Removing this cost may contribute to the higher overall growth of a subset of ribosomal clones. This potential link between nutrient-rich and nutrient-poor responses in ribosomal and flagellar constructs, respectively, suggested that rewirings are tapping into underlying biological responses. As the two major states in our study appeared to be linked, we set out to explore how the ribosomal state relates to the flagellar status.

***fliA* upregulates flagellar genes whereas *ompC* represses them.** The second largest cluster in our study consists of flagellar biosynthesis and chemotaxis genes (Fig. 3; ‘flagellar cluster’) and comprises -*fliA* clones. The flagellar sigma factor FliA is annotated as regulating many of these genes in RegulonDB¹. By juxtaposing differential expressions from flagellar cluster clones onto the RegulonDB network, one can see that the direct partners of *fliA* are upregulated, as expected (Supplementary Fig. 4).

To obtain a ‘flagellar score’ for each rewired network, we calculated the sum of log₂ fold-expression of ~50 differentially expressed flagellar genes, excluding *fliA* (flagellar cluster; Supplementary Data 1). This score correlated better with *fliA* expression than with any other transcription regulator ($R = 0.61$; $P < 0.0001$ (ANOVA F-test)). Thus, the flagellar state agrees with current network annotations and a simple correlation analysis is sufficient to identify the cluster master regulator, FliA.

To obtain a ‘flagellar score’ for each rewired network, we calculated the sum of log₂ fold-expression of ~50 differentially expressed flagellar genes, excluding *fliA* (flagellar cluster; Supplementary Data 1). This score correlated better with *fliA* expression than with any other transcription regulator ($R = 0.61$; $P < 0.0001$ (ANOVA F-test)). Thus, the flagellar state agrees with current network annotations and a simple correlation analysis is sufficient to identify the cluster master regulator, FliA.

As mentioned above, the ribosomal state appears to be antagonistic to the flagellar state, because ribosomal cluster clones with higher ribosomal scores have increasingly ‘anti-flagellar’ states (Fig. 3). A clue to the basis of this antagonism came from our pBAD-ORF expression analysis, where expressing *ompC* (or upstream *fis*) is sufficient to repress *fliA* (Fig. 4c,d). This antagonism can also be inferred from the amino acid addition experiment (Fig. 5a), in which *fliA* is downregulated as *ompC* levels rise (linear regression of *fliA* versus *ompC* in *araC-0* reveals a strong negative correlation: $R = -0.79$, $P = 0.00002$ (ANOVA F-test). Thus, these two alternative states of the system are linked. This has a potential biological explanation as the flagellar machinery is required to move towards new nutrient sources in starvation, whereas the ribosomal state represents a high-nutrient metabolic state where synthesizing flagellar machinery is not required.

In summary, clustering and correlation approaches can identify major common states of the system in response to different rewiring perturbations. These states can then be dissected individually to identify key molecular players and control mechanisms. Extending this, we decided to define objectively all the statistically significant clusters (potential states) ultimately to discover new underlying connections in the system.

Statistics reveal around 20 underlying network clusters. An open question was how many underlying states or clusters would be sufficient to describe the system. Several methods exist to estimate such system properties, including biclustering and principal component analysis (PCA).

Biclustering (see Methods) allows genes to appear in more than one cluster, such that smaller clusters are not overwhelmed by larger ones (for example, ribosomal). We obtained 23 statistically significant biclusters (Supplementary Data 2) and found groups corresponding to the known clusters (for example, flagellar, subclusters 7, 15; ribosomal, subcluster 20), as well as new groups (for example, subcluster 5, peptidoglycan metabolic process—cell wall synthesis).

We also carried out a PCA of the cluster matrix (see Methods). Twenty-one principal components explain 78% of the variance (Supplementary Fig. 5). The components contain groups of genes that are clustered in Fig. 3 and in the biclustering (for example, PC1: ribosomal -*arcA*, -*rpoD*, -*fnr* clones 17%; PC2: *crl* cluster as well as the neighbouring clusters with *osmBCEFY* and *ompAX* downregulation 7%; PC3: -*fis* 5%; PC4: -*fecI* 5%; PC5: -*fliA* 5%; and so on.).

The complementary ways of analysing the microarrays are consistent with the view that most of the rewiring perturbation data can be reduced to around 20 groups of underlying gene expression states, representing key biological features of the system.

Reverse engineering the network with rewired perturbations.

Rewiring the *E. coli* network can potentially reveal underlying regulatory interactions and we searched for these by reverse engineering a transcriptional network from the gene expression microarray data. For this purpose, we used a Gaussian graphical modelling technique implemented in the R/Bioconductor package *qpgraph*³⁰. This method is based on higher-order conditioning to try to distinguish direct associations from indirect ones. The latter

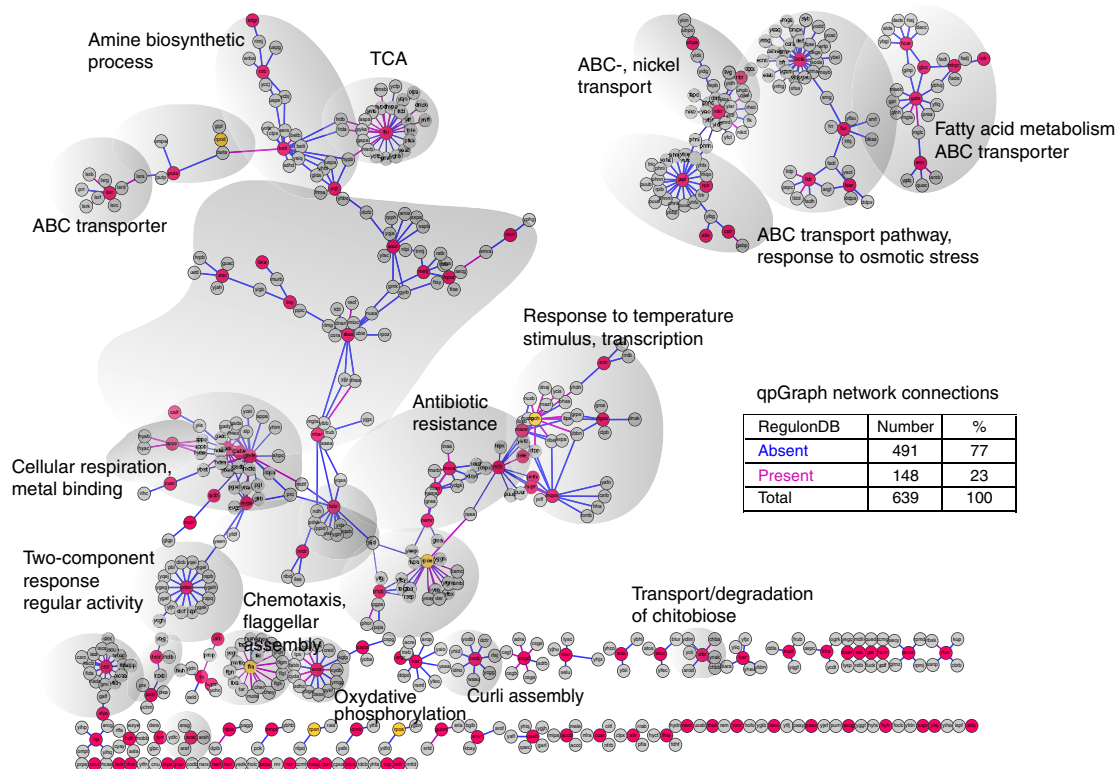


Figure 6 | Reverse engineering network connections with qpgraph. Connected nodes are shown as circles (red indicates transcription factor (TF); yellow is σ -factor; grey indicates regulated gene). Edges (direct predicted connections) are shown by lines (blue indicates absent in RegulonDB¹; magenta indicates present in RegulonDB). A precision of 30% was chosen to maximize the recall rate of RegulonDB interactions (Precision = Percentage number of true positives per number of predicted edges whose genes belong to at least one RegulonDB interaction). The inset table outlines the number of interactions recovered by qpgraph³⁰, divided into interactions that are present or absent in RegulonDB. The network is annotated with Gene Ontology (GO) terms.

often occur owing to technical biases³¹ and strong genetic and molecular interactions that propagate through the network³².

The large coverage of transcriptional regulatory interactions of *E. coli* in the literature is summarized in RegulonDB¹. This gold standard network allows for reverse engineering estimates of that network at nominal values of precision or recall. Concretely, using qgraph, we obtained a first estimate of the network at 30% precision (Precision = Percentage number of true positives per number of predicted edges whose genes belong to at least one RegulonDB interaction; Fig. 6). The network is formed by 643 nodes (genes) and 639 edges (interactions), organized into 64 connected components (modules). The network provided 491 new potential connections (Supplementary Data 4). These have 3% overlap with new (non-RegulonDB) interactions suggested by an independent DREAM project community prediction that uses multiple reverse engineering methods³³ (Supplementary Fig. 6a). We also calculated a smaller, higher precision network (50% precision; Supplementary Fig. 7). The resulting network has 270 genes, 224 interactions and 56 modules; here there are 130 new potential interactions (Supplementary Data 5), which overlap 2% with new DREAM predictions (Supplementary Fig. 6b). The overlap with the DREAM study is relatively low, which shows that rewired networks are an alternative resource for discovering regulatory interactions by reverse engineering approaches.

We set out to validate some of the predicted interactions using publicly available data derived from binding assays, such as ChIP-chip and ChIP-seq, for nine transcription factors (GlnG³⁴, Fnr³⁵, ArgR, Lrp, TrpR³⁶, Fur³⁷, ArcA³⁸, RpoD and RpoS²¹). We found that qgraph gave target gene predictions, at 30% precision, for seven of them (Fnr, ArgR, Lrp, Fur, ArcA, RpoD, RpoS; Supplementary Data 3). Among these, we assessed the enrichment of targets reported in the binding assays among the targets predicted with qgraph. In four of these seven cases, there were fewer than four predicted targets, and therefore, enrichment could not be reliably verified. However, the other three (Fnr, Fur and ArcA) had 29, 10 and 18 predicted target genes, respectively, and in the case of Fnr and ArcA, their predicted targets were significantly enriched by targets reported in the corresponding binding assays (one-tailed Fisher's exact $P < 0.001$; Supplementary Data 5). When restricting the analysis to predictions and targets outside RegulonDB (version 8), only a few predictions could be considered, which again were enriched in reported targets albeit only significantly in the case of Fnr (one-tailed Fisher's exact $P < 0.001$). Interestingly, no Fur-predicted target genes overlapped the targets reported in the binding assay nor targets reported in RegulonDB (version 8) (Supplementary Data 5). This further indicates that rewirings create complementary perturbations to environmental changes.

We next chose one qgraph-predicted subnetwork to explore by DNA footprinting, potentially linking the transcription factor ExuR to DNA replication and the SOS response, via new connections to *gmk* and *mazEF* (Supplementary Fig. 8a). To guide our search, we used the motif-prediction tool MEME³⁹ and identified a potential motif logo for the transcription factor in annotated promoter regions (Supplementary Fig. 8b). MEME found potential ExuR sites in several promoters, most of which are already annotated in regulonDB (Supplementary Fig. 8c). Interestingly, MEME revealed a novel site in *gmk*, which supported the qgraph prediction, although no site was found in *mazEF*. This ambiguity was explored experimentally using DNA footprinting to search for potential binding sites in the promoters. To verify the method, we first confirmed the RegulonDB binding sites *exuT1* and *exuT2* (Supplementary Fig. 8d). We found potential, but weak, ExuR sites in *gmk*, partly supporting the new interaction suggested by our reverse

engineering and MEME. No footprinting evidence was found for the ExuR binding directly to *mazEF*, in agreement with MEME.

Validating predicted interactions requires using multiple methods, and is currently laborious. Nonetheless, these pilot attempts, using ChIP-seq or ChIP-chip analysis and footprinting, suggest that rewired networks can indeed act as a resource for discovering new regulatory interactions. Future work should attempt to validate these predictions in a higher-throughput manner.

Discussion

In this study, we explored for the first time how the perturbations from promoter-ORF rewirings spread across the *E. coli* transcriptome, using a resource of 255 microarrays that represent 85 rewired networks. We found a wide range of perturbation sizes with many common patterns of genes differentially expressed between different rewirings.

The main aim was to identify the major common states of the system and to account for how the rewirings relate to those states. Overall, there were around 20 reoccurring gene expression clusters that contained patterns of related operon expression.

We found that a few master sensors and regulators (*sspAB*, *fliA*) and the outer membrane porin (*ompC*) account for the two largest clusters (ribosomal and flagellar). Furthermore, these states are linked: *ompC* upregulation is associated with the ribosomal state and ultimately leads to repression of *fliA* and the flagellar state. Complex and variable relationships between ribosomal and flagellar gene expression have been observed before in several contexts^{19,40–47}, but have not been studied with respect to promoter-ORF rewirings.

Our data set allows to make some general predictions, which may be useful to synthetic biologists expressing TFs in bacteria. First, more highly connected ORFs and stronger promoters make larger perturbations. For example, rewiring ArcA, RpoD, CRP, Fis, Lrp, IHFAB ORFs, especially with stronger promoters such as *araC*- or *malT*-, is likely to yield the largest perturbations. Second, these larger perturbations (especially via -ArcA and -RpoD rewirings) are more likely to reach a ribosomal state via upregulating *sspB*, while downregulating *FliA* and flagellar machinery.

Although making large perturbations may sometimes be desirable when engineering new properties into bacteria⁴⁸, it is usually more common to desire the opposite (that is, to keep the metabolic load to the bacteria low^{49,50}) and thus avoid unexpected cell behaviour. To minimize perturbations, our results indicate that weaker promoters and less connected ORFs should be utilized. Furthermore, our previous results⁹ indicate that integrating promoter-ORF constructs into the *E. coli* genome, as single copies, reduces their expression by ~150-fold on average, while maintaining phenotypes⁹. It is thus likely that genomic integrations will reduce the magnitude of the promoter-ORF perturbations that we study here with plasmids. Nonetheless, the situation that our plasmid system models is a very common one in genetic engineering, where recombinant plasmids often use a bacterial promoter to drive an effector gene, and the whole expression system is added on top of the existing genetic background of the *E. coli* cell.

A key question is how do new rewirings, in combinations never seen or optimized by evolution, signal information across the network and change gene expression in a coordinated way. There is a growing body of evidence that bacterial cells may not always need evolved signalling machinery to achieve the appropriate gene expression state and can switch stochastically⁵¹, but consistently, if the change provides a fitness advantage. Faster

growing bacteria express genes at a higher average level²⁴, reinforcing the expression of genes required for survival under particular conditions. Over time, the cells in a population thus naturally select the appropriate ‘attractor state’ expression levels and growth rates^{22,26,48,52,53}. The rationale is that bacteria encounter too many different combinations of environmental stimuli to evolve signalling pathways for them all and thus selection ‘according to need’ could compensate for new conditions. This idea is intriguing in the context of rewired gene networks, which provide perturbations that have not been encountered before and yet give consistent outputs. A few examples of our rewired clones have measurable growth advantages, concurrent with large transcriptome perturbations that provide a source of variation (for example, *araC*–*crp* and *pheS*–*arcA* ribosomal clones). It is therefore possible that a combination of rewiring perturbations and fitness pressures contributed to some of the gene expression patterns that we observed.

Despite it being important to consider fitness pressures in regulating gene expression, it is clear that much of *E. coli* gene expression is coordinated by signalling and direct hard-wired interactions between factors⁵⁴. Here, our set of rewired networks provides a different and potentially rich resource for reverse engineering such interactions. The rewirings generate new perturbations that complement those observed by changing growth conditions, inducing knockouts or simple over-expression. Expression profiling of rewired networks and reverse engineering from such data can then help to infer novel regulatory interactions. Further in depth analysis of this resource is likely to confirm many new interactions as well as verifying known ones.

In this study, we have acquired a data set showing what happens when new promoter–TF combinations are added on top of an existing bacterial network, revealing that around 20 underlying potential states of the system (differential gene expression clusters) account for most of the observed changes. Our previous rewiring data sets have provided material for meta-analyses^{55,56} and we hope that these new data will provide the systems and synthetic biology communities with a useful resource for studying *E. coli* gene expression in response to rewiring.

Methods

Affymetrix *E. coli* Genome 2.0 microarrays. The 85 chosen gene network rewiring plasmids (from ref. 9) were transformed into *E. coli* TOP10 cells and grown under standardized conditions: bacteria were freshly plated onto LB Agar plates (supplemented with 100 µg ml⁻¹ ampicillin and 50 µg ml⁻¹ streptomycin) and incubated overnight at 37 °C to form colonies. For each biological replicate, single colonies (maximum 3 days old) were used to inoculate separate 2 ml overnight cultures in LB containing 100 µg ml⁻¹ ampicillin and 50 µg ml⁻¹ streptomycin, in 14 ml culture tubes. Constructs were grown for 37 °C, at 220 r.p.m. in an orbital shaker. The pre-cultures were diluted to an D600 of 0.0015 (B1:800 dilution) in 2 ml of the same medium, in 14 ml culture tubes. Constructs were grown for 16 h at 37 °C, at 220 r.p.m. in an orbital shaker. These conditions were chosen to match previous work⁹. RNA was extracted with RNeasy Protect Bacteria Mini Kit (Qiagen, Cat. 74106) and 10 µg of extracted total bacterial RNA (integrity number >7.0) was used with Affymetrix GeneChip *E. coli* Genome 2.0 Arrays. Additional details are provided in Supplementary Methods.

For differential expression analysis, we extracted microarray data for the relative RNA expression levels of 3,891 annotated *E. coli* genes with unique Entrez IDs⁵⁷. Data analysis was performed using the R programming language and the Bioconductor software packages⁵⁸. Each Affymetrix chip was background adjusted, normalized and log₂ transformed using the Robust Multichip Averaging algorithm⁵⁹. Differential expression analysis was performed by using the Bioconductor package *limma*⁶⁰. All network constructs (biological triplicates from different colonies) were compared with five biological replicates of a ‘wild-type’ reference standard (*E. coli* transformed with an empty promoterless GFP plasmid; denoted ‘Co⁹’). The genes which were differentially expressed (<5% false discovery rate¹², >1.2-fold-change) were extracted and used to analyse the scale of network perturbations. MIAME compliant microarray data files are available at EBI ArrayExpress (ID: E-MTAB-3233).

Clustering. EPCLUST (<http://www.bioinf.ebc.ee/EP/EP/EPCLUST/>)¹⁴ was used for clustering the array data of fold changes in mRNA levels. Linear regression correlation analysis was carried out on microarray data with StatPlus:mac.LE.2009 ANOVA F-test to calculate *P* values.

Induced expression and qRT-PCR. ORFs were obtained via PCR from *E. coli* TOP10 genomic DNA, and were cloned using the pBAD202 Directional TOPO Expression Kit (Invitrogen, Cat. K4202-01). We grew verified clones in LB medium, with 30 µg ml⁻¹ kanamycin and 0.002% arabinose, to induce the pBAD promoter. RNA was extracted for qRT-PCR with an RNeasy Protect Bacteria Mini Kit (Qiagen, Cat. 74106).

Reverse transcription was carried out with SuperScript II Reverse Transcriptase (Invitrogen, Cat. 18064-014), or the QuantiTect Reverse Transcription Kit (QIAGEN, Cat. 205314), according to the manufacturer’s instructions. RNA transcripts were quantified in a 10 µl RT–qPCR reaction, using the LightCycler 480 system (Roche). Primer sets were tested by melting curve analysis with *E. coli* genomic DNA. All the samples were normalized against levels of *gnd* housekeeping gene and expression fold change was calculated relative to *gnd*-normalized Co control.

Biclustering and Gene Ontology Enrichment Analysis. Biclustering was done with the Iterative Signature Algorithm⁶¹, in the R Bioconductor *eisa* package (v. 1.4.1; ref. 55). The gene (features) and sample thresholds were set to 2.1 and 1.5, respectively. Gene filter cutoffs: genes were used with log₂ fold changes >0.25 or <–0.25 in at least three points.

Gene ontology analysis (Supplementary Data 2) was performed using the R Bioconductor package GOstats (v. 2.18; ref. 59), for biological process, molecular functions and cellular components. Results were filtered using an adjusted *P* value cutoff of 0.05 (ref. 12).

Principal component analysis. PCA analysis that finds linear combinations of the genes expressed that are both uncorrelated and account for as much variance as possible⁶³. We used the Kaiser rule (to retain components with eigen values >1, such that a factor extracts at least as much variance as the equivalent of one original variable⁶⁴). Thus, 21 PCs are obtained.

Reverse engineering of transcriptional regulatory networks. We reverse engineered transcriptional regulatory networks by using Gaussian graphical modelling techniques. Since, in the context of microarray data, the number of random variables (*p*) representing genes is much larger than the number of observations (*n*) representing samples, classical Gaussian graphical model theory cannot be directly applied. Therefore, we used the Bioconductor package *qpgraph*³⁰, the which is tailor-made for data with *p* ≫ *n* dimensions. We estimated the structure of the network by calculating a quantity called the non-rejection rate (NRR), which is based on partial correlations of order *q* < (*n* – 2) (ref. 65). The NRR gave an estimate of the strength of a direct interaction between two genes and can be understood as a linear measure of association over all marginal distributions of size *q* that is calculated for every gene pair. We calculated NRRs for every possible value of *q* and obtained an average NRR³⁰. We used the average NRR to rank all regulator–target associations and estimate precision–recall curves based on RegulonDB 7.2 (ref. 1). Precision = Percentage number of true positives per number of predicted edges whose genes belong to at least one RegulonDB interaction. Guided by these curves and knowledge of the underlying system, we finally selected 30 and 50% precision networks.

References

- Gama-Castro, S. *et al.* RegulonDB version 7.0: transcriptional regulation of *Escherichia coli* K-12 integrated within genetic sensory response units (Sensor Units). *Nucleic Acids Res.* **39**, D98–D105 (2011).
- Keseler, I. M. *et al.* EcoCyc: a comprehensive database of *Escherichia coli* biology. *Nucleic Acids Res.* **39**, D583–D590 (2011).
- Martinez-Antonio, A., Janga, S. C. & Thieffry, D. Functional organisation of *Escherichia coli* transcriptional regulatory network. *J. Mol. Biol.* **381**, 238–247 (2008).
- Faith, J. J. *et al.* Large-scale mapping and validation of *Escherichia coli* transcriptional regulation from a compendium of expression profiles. *PLoS Biol.* **5**, e8 (2007).
- Edwards, J. S. & Palsson, B. O. The *Escherichia coli* MG1655 *in silico* metabolic genotype: its definition, characteristics, and capabilities. *Proc. Natl. Acad. Sci. USA* **97**, 5528–5533 (2000).
- Almaas, E., Kovacs, B., Vicsek, T., Oltvai, Z. N. & Barabasi, A. L. Global organization of metabolic fluxes in the bacterium *Escherichia coli*. *Nature* **427**, 839–843 (2004).
- Covert, M. W., Knight, E. M., Reed, J. L., Herrgard, M. J. & Palsson, B. O. Integrating high-throughput and computational data elucidates bacterial networks. *Nature* **429**, 92–96 (2004).

8. Chua, G. *et al.* Identifying transcription factor functions and targets by phenotypic activation. *Proc. Natl Acad. Sci. USA* **103**, 12045–12050 (2006).
9. Isalan, M. *et al.* Evolvability and hierarchy in rewired bacterial gene networks. *Nature* **452**, 840–845 (2008).
10. Teichmann, S. A. & Babu, M. M. Gene regulatory network growth by duplication. *Nat. Genet.* **36**, 492–496 (2004).
11. Shou, C. *et al.* Measuring the evolutionary rewiring of biological networks. *PLoS Comput. Biol.* **7**, e1001050 (2011).
12. Benjamini, Y. & Hochberg, Y. Controlling the false discovery rate: a practical and powerful approach to multiple testing. *J. Roy. Statist. Soc. Ser. B* **57**, 289–300 (1995).
13. Pratt, L. A. & Silhavy, T. J. Crl stimulates RpoS activity during stationary phase. *Mol. Microbiol.* **29**, 1225–1236 (1998).
14. Vilo, J., Kapushesky, M., Kemmeren, P., Sarkans, U. & Brazma, A. *The Analysis of Gene Expression Data: Methods and Software* (Springer, 2003).
15. Rohlhony, N., Carvalho, F. A. & Darfeuille-Michaud, A. OmpC and the sigma(E) regulatory pathway are involved in adhesion and invasion of the Crohn's disease-associated *Escherichia coli* strain LF82. *Mol. Microbiol.* **63**, 1684–1700 (2007).
16. Condon, C., Squires, C. & Squires, C. L. Control of rRNA transcription in *Escherichia coli*. *Microbiol. Rev.* **59**, 623–645 (1995).
17. Gourse, R. L., Gaal, T., Bartlett, M. S., Appleman, J. A. & Ross, W. rRNA transcription and growth rate-dependent regulation of ribosome synthesis in *Escherichia coli*. *Annu. Rev. Microbiol.* **50**, 645–677 (1996).
18. Saint-Ruf, C., Taddei, F. & Matic, I. Stress and survival of aging *Escherichia coli* rpoS colonies. *Genetics* **168**, 541–546 (2004).
19. Dong, T. & Schellhorn, H. E. Control of RpoS in global gene expression of *Escherichia coli* in minimal media. *Mol. Genet. Genomics* **281**, 19–33 (2009).
20. Song, H. K. & Eck, M. J. Structural basis of degradation signal recognition by SspB, a specificity-enhancing factor for the ClpXP proteolytic machine. *Mol. Cell* **12**, 75–86 (2003).
21. Cho, B. K., Kim, D., Knight, E. M., Zengler, K. & Palsson, B. O. Genome-scale reconstruction of the sigma factor network in *Escherichia coli*: topology and functional states. *BMC Biol.* **12**, 4 (2014).
22. Kashiwagi, A., Urabe, I., Kaneko, K. & Yomo, T. Adaptive response of a gene network to environmental changes by fitness-induced attractor selection. *PLoS ONE* **1**, e49 (2006).
23. Kjeldgaard, N. O., Maaloe, O. & Schaechter, M. The transition between different physiological states during balanced growth of *Salmonella typhimurium*. *J. Gen. Microbiol.* **19**, 607–616 (1958).
24. Schaechter, M., Maaloe, O. & Kjeldgaard, N. O. Dependency on medium and temperature of cell size and chemical composition during balanced growth of *Salmonella typhimurium*. *J. Gen. Microbiol.* **19**, 592–606 (1958).
25. Zhang, X., Liang, S. T. & Bremer, H. Feedback control of ribosome synthesis in *Escherichia coli* is dependent on eight critical amino acids. *Biochimie* **88**, 1145–1155 (2006).
26. Klumpp, S., Zhang, Z. & Hwa, T. Growth rate-dependent global effects on gene expression in bacteria. *Cell* **139**, 1366–1375 (2009).
27. Scott, M., Gunderson, C. W., Mateescu, E. M., Zhang, Z. & Hwa, T. Interdependence of cell growth and gene expression: origins and consequences. *Science* **330**, 1099–1102 (2010).
28. Levy, S. & Barkai, N. Coordination of gene expression with growth rate: a feedback or a feed-forward strategy? *FEBS Lett.* **583**, 3974–3978 (2009).
29. Chilcott, G. S. & Hughes, K. T. Coupling of flagellar gene expression to flagellar assembly in *Salmonella enterica* serovar typhimurium and *Escherichia coli*. *Microbiol. Mol. Biol. Rev.* **64**, 694–708 (2000).
30. Castelo, R. & Roverato, A. Reverse engineering molecular regulatory networks from microarray data with qp-graphs. *J. Comput. Biol.* **16**, 213–227 (2009).
31. Leek, J. T. *et al.* Tackling the widespread and critical impact of batch effects in high-throughput data. *Nat. Rev. Genet.* **11**, 733–739 (2010).
32. Tur, I., Roverato, A. & Castelo, R. Mapping eQTL networks with mixed graphical Markov models. *Genetics* **198**, 1377–1393 (2014).
33. Marbach, D. *et al.* Wisdom of crowds for robust gene network inference. *Nat. Methods* **9**, 796–804 (2012).
34. Brown, D. R., Barton, G., Pan, Z., Buck, M. & Wigneshweraraj, S. Nitrogen stress response and stringent response are coupled in *Escherichia coli*. *Nat. Commun.* **5**, 4115 (2014).
35. Myers, K. S. *et al.* Genome-scale analysis of *Escherichia coli* FNR reveals complex features of transcription factor binding. *PLoS Genet.* **9**, e1003565 (2013).
36. Cho, B. K., Federowicz, S., Park, Y. S., Zengler, K. & Palsson, B. O. Deciphering the transcriptional regulatory logic of amino acid metabolism. *Nat. Chem. Biol.* **8**, 65–71 (2012).
37. Seo, S. W. *et al.* Deciphering Fur transcriptional regulatory network highlights its complex role beyond iron metabolism in *Escherichia coli*. *Nat. Commun.* **5**, 4910 (2014).
38. Park, D. M., Akhtar, M. S., Ansari, A. Z., Landick, R. & Kiley, P. J. The bacterial response regulator ArcA uses a diverse binding site architecture to regulate carbon oxidation globally. *PLoS Genet.* **9**, e1003839 (2013).
39. Bailey, T. L. *et al.* MEME SUITE: tools for motif discovery and searching. *Nucleic Acids Res.* **37**, W202–W208 (2009).
40. Franchini, A. G. & Egli, T. Global gene expression in *Escherichia coli* K-12 during short-term and long-term adaptation to glucose-limited continuous culture conditions. *Microbiology* **152**, 2111–2127 (2006).
41. Chang, D. E., Smalley, D. J. & Conway, T. Gene expression profiling of *Escherichia coli* growth transitions: an expanded stringent response model. *Mol. Microbiol.* **45**, 289–306 (2002).
42. Patten, C. L., Kirchoff, M. G., Schertzberg, M. R., Morton, R. A. & Schellhorn, H. E. Microarray analysis of RpoS-mediated gene expression in *Escherichia coli* K-12. *Mol. Genet. Genomics* **272**, 580–591 (2004).
43. Durfee, T., Hansen, A. M., Zhi, H., Blattner, F. R. & Jin, D. J. Transcription profiling of the stringent response in *Escherichia coli*. *J. Bacteriol.* **190**, 1084–1096 (2008).
44. Bradley, M. D., Beach, M. B., de Koning, A. P., Pratt, T. S. & Osuna, R. Effects of Fis on *Escherichia coli* gene expression during different growth stages. *Microbiology* **153**, 2922–2940 (2007).
45. Harcum, S. W. & Haddadin, F. T. Global transcriptome response of recombinant *Escherichia coli* to heat-shock and dual heat-shock recombinant protein induction. *J. Ind. Microbiol. Biotechnol.* **33**, 801–814 (2006).
46. Liu, M. *et al.* Global transcriptional programs reveal a carbon source foraging strategy by *Escherichia coli*. *J. Biol. Chem.* **280**, 15921–15927 (2005).
47. Bergholz, T. M. *et al.* Global transcriptional response of *Escherichia coli* O157:H7 to growth transitions in glucose minimal medium. *BMC Microbiol.* **7**, 97 (2007).
48. Murakami, Y., Matsumoto, Y., Tsuru, S., Ying, B. W. & Yomo, T. Global coordination in adaptation to gene rewiring. *Nucleic Acids Res.* **43**, 1304–1316 (2015).
49. Schaeferli, Y. *et al.* A unified design space of synthetic stripe-forming networks. *Nat. Commun.* **5**, 4905 (2014).
50. Ceroni, F., Algar, R., Stan, G. B. & Ellis, T. Quantifying cellular capacity identifies gene expression designs with reduced burden. *Nat. Methods* **12**, 415–418 (2015).
51. Kussell, E. & Leibler, S. Phenotypic diversity, population growth, and information in fluctuating environments. *Science* **309**, 2075–2078 (2005).
52. Yamada, T. *et al.* Analysis of fluctuation in protein abundance without promoter regulation based on *Escherichia coli* continuous culture. *Biosystems* **90**, 614–622 (2007).
53. Tsuru, S. *et al.* Adaptation by stochastic switching of a monostable genetic circuit in *Escherichia coli*. *Mol. Syst. Biol.* **7**, 493 (2011).
54. Keseler, I. M. *et al.* EcoCyc: a comprehensive view of *Escherichia coli* biology. *Nucleic Acids Res.* **37**, D464–D470 (2009).
55. Bhardwaj, N., Kim, P. M. & Gerstein, M. B. Rewiring of transcriptional regulatory networks: hierarchy, rather than connectivity, better reflects the importance of regulators. *Sci. Signal.* **3**, ra79 (2010).
56. Carrera, J. *et al.* An integrative, multi-scale, genome-wide model reveals the phenotypic landscape of *Escherichia coli*. *Mol. Syst. Biol.* **10**, 735 (2014).
57. Carlson, M. *et al.* ecoli2.db: Affymetrix *E. coli* Genome 2.0 Array annotation data (chip ecoli2), Version 2.6.3 (2012).
58. Gentleman, R. C. *et al.* Bioconductor: open software development for computational biology and bioinformatics. *Genome Biol.* **5**, R80 (2004).
59. Irizarry, R. A. *et al.* Exploration, normalization, and summaries of high density oligonucleotide array probe level data. *Biostatistics* **4**, 249–264 (2003).
60. Smyth, G. K. Linear models and empirical bayes methods for assessing differential expression in microarray experiments. *Stat. Appl. Genet. Mol. Biol.* **3**, Article3 (2004).
61. Bergmann, S., Ihmels, J. & Barkai, N. Iterative signature algorithm for the analysis of large-scale gene expression data. *Phys. Rev. E Stat. Nonlin. Soft Matter Phys.* **67**, 031902 (2003).
62. Falcon, S. & Gentleman, R. Using GOstats to test gene lists for GO term association. *Bioinformatics* **23**, 257–258 (2007).
63. Jolliffe, I. T. *Principal Component Analysis* 2nd edn (Springer, 2002).
64. Kaiser, H. F. The application of electronic computers to factor analysis. *Educ. Psychol. Meas.* **20**, 141–151 (1960).
65. Castelo, R. & Roverato, A. A robust procedure for gaussian graphical model search from microarray data with p larger than n. *J. Mach. Learn. Res.* **7**, 2621–2650 (2006).

Acknowledgements

We thank Ben Lehner for critical reading, Anna Bauer-Mehren for helpful discussions and Vladimir Benes and Tomi Ivacevic at EMBL Genecore for processing microarrays. Funding was provided by FP7 ERC 201249 ZINC-HUBS (R.B.), Spanish grants MICINN BFU2010-17953 (M.I.), MINECO TIN2011-22826 (R.C., S.H.), ISCIII COMBIOMED RD07/0067/0001 (R.C., S.H.). Y.S. was funded by a Swiss National Science Foundation Fellowship (PBSKP3_134331/1) and by the Marie Curie Action (FP7 PIF-GA-2011-298348). M.I. was funded by New Investigator Award No. WT102944 from the Wellcome Trust UK.

Author contributions

R.S., S.T. and Y.S. designed and conducted the experiments, and analysed the results. S.H., M.F., F.M.M. and R.C. designed and carried out computational analyses, including reverse engineering, PCA and biclustering. M.I. designed the study, analysed results and wrote the manuscript.

Additional information

Accession codes: All underlying microarray data are freely available at EBI ArrayExpress, ID: E-MTAB-3233 (www.ebi.ac.uk/arrayexpress).

Supplementary Information accompanies this paper at <http://www.nature.com/naturecommunications>

Competing financial interests: The authors declare no competing financial interests.

Reprints and permission information is available online at <http://npg.nature.com/reprintsandpermissions/>

How to cite this article: Baumstark, R. *et al.* The propagation of perturbations in rewired bacterial gene networks. *Nat. Commun.* 6:10105 doi: 10.1038/ncomms10105 (2015).



This work is licensed under a Creative Commons Attribution 4.0 International License. The images or other third party material in this article are included in the article's Creative Commons license, unless indicated otherwise in the credit line; if the material is not included under the Creative Commons license, users will need to obtain permission from the license holder to reproduce the material. To view a copy of this license, visit <http://creativecommons.org/licenses/by/4.0/>