

## ORIGINAL ARTICLE

## SHP2 is required for BCR-ABL1-induced hematologic neoplasia

S Gu<sup>1,2,5</sup>, A Sayad<sup>2</sup>, G Chan<sup>2</sup>, W Yang<sup>3</sup>, Z Lu<sup>2</sup>, C Virtanen<sup>2</sup>, RA Van Etten<sup>4</sup> and BG Neel<sup>1,2,6</sup>

BCR-ABL1-targeting tyrosine kinase inhibitors (TKIs) have revolutionized treatment of Philadelphia chromosome-positive (Ph<sup>+</sup>) hematologic neoplasms. Nevertheless, acquired TKI resistance remains a major problem in chronic myeloid leukemia (CML), and TKIs are less effective against Ph<sup>+</sup> B-cell acute lymphoblastic leukemia (B-ALL). GAB2, a scaffolding adaptor that binds and activates SHP2, is essential for leukemogenesis by BCR-ABL1, and a GAB2 mutant lacking SHP2 binding cannot mediate leukemogenesis. Using a genetic loss-of-function approach and bone marrow transplantation models for CML and BCR-ABL1<sup>+</sup> B-ALL, we show that SHP2 is required for BCR-ABL1-evoked myeloid and lymphoid neoplasia. *Ptpn11* deletion impairs initiation and maintenance of CML-like myeloproliferative neoplasm, and compromises induction of BCR-ABL1<sup>+</sup> B-ALL. SHP2, and specifically, its SH2 domains, PTP activity and C-terminal tyrosines, are essential for BCR-ABL1<sup>+</sup>, but not WT, pre-B-cell proliferation. The mitogen-activated protein kinase kinase (MEK) / extracellular signal-regulated kinase (ERK) pathway is regulated by SHP2 in WT and BCR-ABL1<sup>+</sup> pre-B cells, but is only required for the proliferation of BCR-ABL1<sup>+</sup> cells. SHP2 is required for SRC family kinase (SFK) activation only in BCR-ABL1<sup>+</sup> pre-B cells. RNAseq reveals distinct SHP2-dependent transcriptional programs in BCR-ABL1<sup>+</sup> and WT pre-B cells. Our results suggest that SHP2, via SFKs and ERK, represses *MXD3/4* to facilitate a MYC-dependent proliferation program in BCR-ABL1-transformed pre-B cells.

*Leukemia* (2018) 32, 203–213; doi:10.1038/leu.2017.250

## INTRODUCTION

The Philadelphia (Ph<sup>+</sup>) chromosome translocation t(9;22) generates the oncogene *BCR-ABL1*, encoding a constitutively activated tyrosine kinase. Different BCR-ABL1 isoforms cause chronic myeloid leukemia (CML) and Ph<sup>+</sup> B-cell acute lymphoblastic leukemia (B-ALL).<sup>1,2</sup> ABL1 tyrosine kinase inhibitors, such as imatinib, have revolutionized the treatment of Ph<sup>+</sup> hematopoietic neoplasia. Nevertheless, >40% of CML patients are PCR-positive after 10 years of imatinib treatment and remain at risk of relapse,<sup>3</sup> perhaps because CML stem cells (CML-SCs) are insensitive to BCR-ABL1 inhibitors.<sup>4–6</sup> The response to tyrosine kinase inhibitors (combined with chemotherapy) is poorer in Ph<sup>+</sup> B-ALL,<sup>7</sup> with several tyrosine kinase inhibitor resistance mechanisms proposed, including *BCR-ABL1* mutation/amplification, elevated drug exporters and upregulation of other oncogenic pathways.<sup>8–10</sup> Therefore, new approaches are needed to eradicate BCR-ABL1<sup>+</sup> neoplasia.

Chronic myeloid leukemia-like myeloproliferative neoplasm (MPN) can be reproduced in mice by retroviral transduction of *BCR-ABL1* into hematopoietic stem cell-enriched bone marrow (BM) cells in the presence of myeloid cytokines, followed by transplantation into irradiated recipients.<sup>11–13</sup> B-cell acute lymphoblastic leukemia can be induced by transducing bulk BM cells in the presence of interleukin-7 (IL-7) before transplantation.<sup>12</sup> In Ph<sup>+</sup> cell lines and mouse leukemia models, BCR-ABL1 is phosphorylated on Y177, which recruits the adaptor GRB2 and, thereby, the scaffolding adaptor GAB2.<sup>14,15</sup> Consequently, GAB2 is

constitutively tyrosyl-phosphorylated and binds SHP2 and the p85 subunit of phosphatidylinositol 3-kinase (PI3K) to activate the mitogen-activated protein kinase kinase (MEK)/extracellular signal-regulated kinase (ERK) and PI3K/AKT serine/threonine kinase (AKT) pathways, respectively.<sup>16,17</sup> Y177F mutation compromises myeloid transformation and leukemogenesis,<sup>18–20</sup> and GAB2 is required both for BCR-ABL1-induced myeloid and lymphoid leukemogenesis.<sup>21</sup> At present, it is not feasible to pharmacologically target GAB2, rendering it essential to identify and validate GAB2-interacting proteins that mediate leukemogenesis. Reconstituting *Gab2*<sup>-/-</sup> donor cells with a GAB2 mutant lacking its SHP2 binding sites does not restore myeloid or lymphoid leukemogenesis, suggesting that SHP2 is required for these diseases.<sup>21</sup> Nevertheless, the functions of SHP2 are not mediated solely through GAB2, and its role in BCR-ABL1-induced neoplasia remains undefined.

SHP2, encoded by *PTPN11*, is a ubiquitously expressed non-receptor protein-tyrosine phosphatase (PTP) required for full RAS-ERK pathway activation in response to growth factors and cytokines. SHP2 also modulates the PI3K-AKT and JAK-STAT pathways.<sup>17,22–25</sup> SHP2 catalytic activity is suppressed by intramolecular interaction of its N-SH2 and PTP domains, preventing substrate binding and catalysis.<sup>26,27</sup> Following agonist stimulation, auto-inhibition is relieved by binding of pY peptides (such as in phospho-GAB2) to the SHP2 SH2 domains, leading to altered

<sup>1</sup>Department of Medical Biophysics, University of Toronto, Toronto, Ontario, Canada; <sup>2</sup>Princess Margaret Cancer Center, Toronto, Ontario, Canada; <sup>3</sup>Department of Orthopaedics, Brown University Alpert Medical School, Providence, RI, USA and <sup>4</sup>Chao Family Comprehensive Cancer Center, Division of Hematology/Oncology, University of California, Irvine, Irvine, CA, USA. Correspondence: Professor BG Neel, Laura and Isaac Perlmutter Cancer Center, NYU Langone Medical Center, 522 First Avenue, Smilow 12thFl. Suite 1201, New York, NY 10016, USA.  
E-mail: Benjamin.Neel@nyumc.org

<sup>5</sup>Current address: Department of Biostatistics and Computational Biology, Dana-Farber Cancer Institute, Boston, MA 02215, USA.

<sup>6</sup>Current address: Laura and Issac Perlmutter Cancer Center, NYU Langone Medical Center, New York, NY 10016, USA.

Received 31 March 2017; revised 14 July 2017; accepted 18 July 2017; accepted article preview online 14 August 2017; advance online publication, 5 September 2017

subcellular localization, PTP domain exposure and enzyme activation.<sup>17,23,26–29</sup>

SHP2 has critical roles in hematopoiesis and leukemogenesis. Myeloid and erythroid differentiation are impaired in embryonic stem cells expressing mutant SHP2.<sup>30</sup> SHP2 deficiency leads to defective growth factor- and cytokine-evoked ERK and AKT activation, resulting in impaired self-renewal and apoptosis of adult hematopoietic stem cells.<sup>31,32</sup> Moreover, somatic gain-of-function alleles of *PTPN11* cause >30% of juvenile myelomonocytic leukemia cases, are found in ~5% of acute myeloid leukemia and ALL patients, and can cooperate with *Tet2* deficiency and *AML1-ETO* to generate acute myeloid leukemia in mice.<sup>33–37</sup>

Multiple studies implicate SHP2 in BCR-ABL1-induced pathogenesis. SHP2 is constitutively phosphorylated in BCR-ABL1-transformed cells,<sup>38,39</sup> interacts with GAB2<sup>16,21</sup> and is required for BCR-ABL1-evoked transformation of a yolk sac cell line.<sup>40</sup> However, the role of SHP2 in adult Ph<sup>+</sup> hematopoietic neoplasia remains elusive. Here, we utilize mouse models to address this issue, report a critical role for SHP2 in myeloid and lymphoid Ph<sup>+</sup> neoplasia, and uncover a differential requirement for SHP2 in normal versus leukemic pre-B cells.

## MATERIALS AND METHODS

### Mice

*Ptpn11<sup>flox/flox</sup>* mice<sup>41,42</sup> were bred to *Mx1-Cre* or *Rosa26-creERT2* mice (The Jackson Laboratory, Bar Harbor, ME, USA) in the C57BL/6 background. Genotyping was performed as described.<sup>31</sup>

### Virus production

Replication-defective ecotropic retroviral stocks of BCR-ABL1-expressing p210MIGFP, p210MIGFPCre and p210MINVneo<sup>16,43,44</sup> were generated by transient transfection of 293 T cells.<sup>21</sup> Viral supernatants were collected 48 and 72 h post-transfection and stored at –80 °C.

### Mouse models of CML and B-ALL

For CML-like MPN, BM was flushed from femurs and tibiae. Red blood cells were lysed in 0.16 M NH<sub>4</sub>Cl, and red blood cell-depleted BM cells were incubated with rat anti-mouse lineage (Lin) antibodies (CD3, CD19, Gr1 and Ter119 (BioLegend, San Diego, CA, USA) and CD4, CD8α, CD127 and B220 (eBioscience, Waltham, MA, USA)) for 30 min. Lin<sup>+</sup> cells were depleted with sheep anti-rat Dynabeads (Invitrogen, Carlsbad, CA, USA) for 1 h, and the remaining cells were pre-stimulated overnight in IMDM-15% fetal bovine serum (FBS), supplemented with IL-3 (6 ng/ml), IL-6 (10 ng/ml) and stem cell factor (20 ng/ml). On each of the following 2 days, pre-stimulated Lin<sup>+</sup> cells were spin-infected, and on the third day, cells were collected, resuspended in cold phosphate-buffered saline and injected intravenously into 6-Gy irradiated syngeneic recipients.<sup>45</sup>

For B-lymphoid leukemogenesis, red blood cell-depleted BM was resuspended in IMDM-15%FBS, supplemented with IL-7 (10 ng/ml) and infected as above. After infection, cells were cultured at 37 °C for 4 h, resuspended in cold phosphate-buffered saline and injected intravenously into 11-Gy irradiated syngeneic recipients.<sup>12</sup>

### B-lymphoid progenitor cultures

Red blood cell-depleted BM cells were incubated for 30 min with rat anti-CD4, -CD8, -Gr1, -Mac-1 and -Ter119 antibodies, followed by sheep-anti-rat Dynabeads for 1 h. Following magnetic separation, the remaining cells were cultured in 24-well plates in OptiMEM-10%FBS containing 5 ng/ml IL-7 and 50 μM β-mercaptoethanol.<sup>46</sup>

### Flow cytometry

All studies used an LSRII flow cytometer. Red blood cell-depleted cells from peripheral blood, spleen and/or BM were labeled with antibodies to myeloid (Gr-1, Mac-1), B lymphoid (B220, CD19) and T lymphoid (CD4, CD8) markers. To assess apoptosis, cells were washed in cold phosphate-buffered saline, resuspended in Annexin V staining buffer (BD Biosciences, San Jose, CA, USA) and incubated with Annexin V (phycoerythrin- or fluorescein-conjugated; 1:300) and Sytox Blue (1:1000) for 20 min at room

temperature in the dark. Samples were analyzed within 1 h, with low-forward scatter apoptotic bodies gated. For cell cycle analysis, cells were resuspended in OptiMEM-10%FBS, supplemented with 5 ng/ml IL-7 containing 10 μM Hoechst-33342. After 30 min at 37 °C, Pyronin-Y was added (2.5 μg/ml), and cells were incubated for another 15 min prior to analysis.

### Immunoblotting

Myeloid- or B lymphoid-enriched BM cells were transduced with p210MIGR1 or p210MINVneo viruses. Where indicated, *Ptpn11* deletion was induced with poly I:C (125 μg × 2 times) for *in vivo* experiments or 4-OHT (1 μM) for *in vitro* studies. Transduced cells were isolated by fluorescence-activated cell sorting (for p210MIGFP) or G418 selection (for p210MINVneo), starved for 2 h in IMDM-2%FBS (myeloid cells) or OptiMEM-2%FBS (lymphoid cells) and lysed in RIPA buffer.<sup>47</sup> Lysates were resolved by sodium dodecyl sulfate–polyacrylamide gel electrophoresis, and immunoblotting was performed as described.<sup>21</sup> Anti-phospho-STAT5 (Tyr694), -phospho-CRKL (Tyr207), -phospho-(Ser473) and -total AKT, -phospho-(Thr202/Tyr204) and -total p44/42 ERK1/2, -phospho-S6 (S235-/236), SRC, and -phospho-SRC (Y416), which cross-reacts with the other SRC family kinases (SFKs), were from Cell Signaling Technology, Danvers, MA, USA. Anti-ABL1 and -SHP2 were from Santa Cruz Biotechnology, Dallas, TX, USA. Antibodies were used at each manufacturer's recommended concentrations.

### RNA-seq

RNA (150 ng) was reverse-transcribed using the Illumina TruSeq Stranded mRNA kit. cDNA libraries were size-indexed and validated using an Agilent Bioanalyzer, and concentrations were confirmed by qPCR. For the 16 samples, each of the four libraries (one WT SHP2<sup>+/+</sup>, one WT SHP2<sup>-/-</sup>, one BCR-ABL1 SHP2<sup>+/+</sup> and one BCR-ABL1 SHP2<sup>-/-</sup>) was loaded onto an Illumina cBot for cluster generation, and the flow cell was subjected to 100 cycles of paired-end sequencing on an Illumina HiSeq 2000. Alignment was performed with Bowtie, using default parameters. Gene expression levels were estimated using Cufflinks and subjected to quantile normalization.<sup>48</sup> Batch effect adjustment was performed by Combat.<sup>49</sup> Differentially expressed genes between samples were identified by voom-limma.<sup>50</sup> Enrichment analyses for GO terms or transcription factor effectors were performed with DAVID or Enrichr, respectively.<sup>51,52</sup> GSEA was implemented using software from the Broad Institute.

### Quantitative PCR with reverse transcription (RT–PCR)

Total RNA was prepared using the RNeasy minikit (Qiagen, Hilden, Germany), and reverse-transcribed using SuperScriptIII (Invitrogen). SYBR Green-based gene expression analyses (Bio-Rad, Hercules, CA, USA) were conducted according to the manufacturer's instructions. Each sample was measured in triplicate, and relative expression was normalized to *Tbp*.

### Statistics

Survival curves were compared by the log-rank test. Signaling intensities in myeloid and lymphoid cells were compared by two-sided *t*-tests. Corrections for multiple comparisons were performed by using the Benjamini–Hochberg procedure. Sample size was determined to ensure at least 80% power to detect the difference of interest, based on the empirically estimated variance in each group.

### Study approval

All animal studies were approved by the University Health Network Animal Care Committee (Toronto, Ontario, Canada) and performed in accordance with the standards of the Canadian Council on Animal Care.

## RESULTS

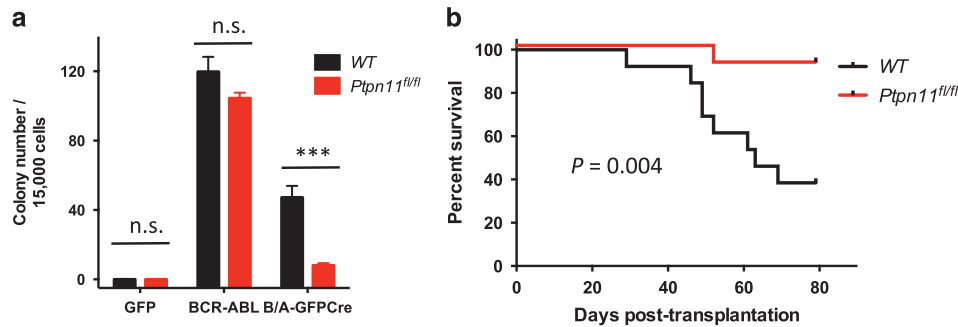
SHP2 deficiency attenuates induction of CML-like MPN by BCR-ABL1

BCR-ABL1 induces cytokine-independent myeloid progenitor colonies,<sup>53</sup> and BCR-ABL1-transformed hematopoietic stem and progenitor cells, transplanted into irradiated syngeneic recipient mice, induce CML-like MPN.<sup>13</sup> To address the role of SHP2 in BCR-ABL1-evoked myeloid disease, we transduced BM from *Ptpn11<sup>fl/fl</sup>*

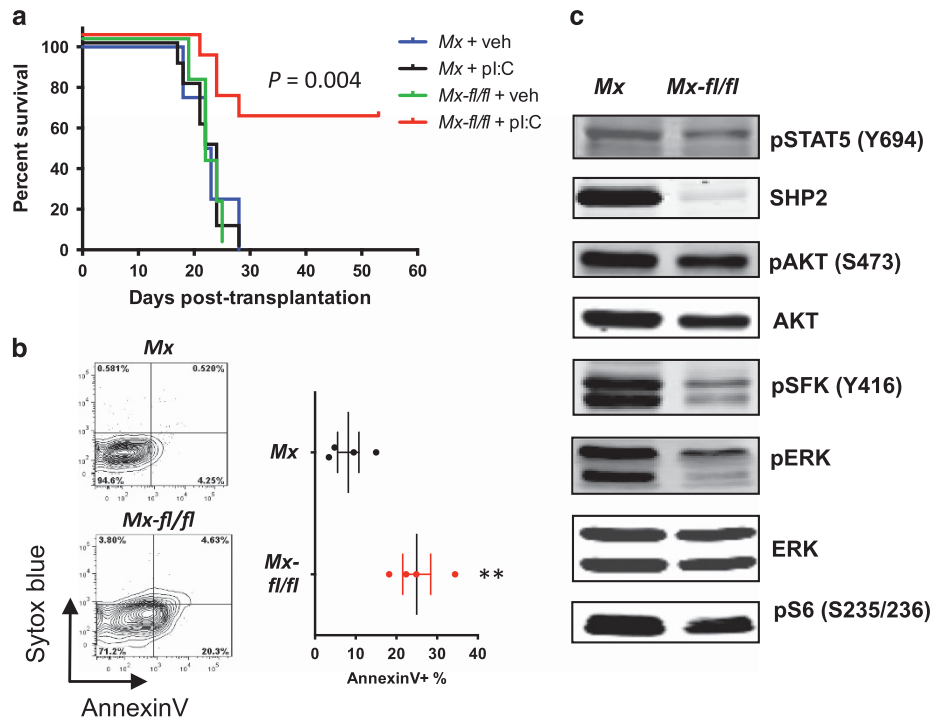
mice<sup>41</sup> with p210MIGFP- or p210MIGFPCre-based retroviruses that co-express BCR-ABL1 with GFP or GFP-CRE, respectively. GFP-CRE induces floxed allele deletion, resulting in absence of SHP2. Lin<sup>-</sup> BM cells from WT or *Ptpn11*<sup>fl/fl</sup> mice were infected with parental pMIGR1, p210MIGFP or p210MIGFPCre virus, GFP<sup>+</sup> cells were isolated by fluorescence-activated cell sorting and seeded in methylcellulose-based media, and cytokine-independent colonies were counted 1 week later. As expected, p210MIGFP-infected WT and *Ptpn11*<sup>fl/fl</sup> BM cells yielded similar numbers of cytokine-independent myeloid colonies. By contrast, myeloid colony formation by p210MIGFPCre-infected *Ptpn11*<sup>fl/fl</sup> BM cells was impaired markedly, indicating that SHP2 is required for BCR-ABL1-induced myeloid transformation (Figure 1a). Notably, p210MIGFPCre-infected WT BM yielded fewer cytokine-

independent colonies than did p210MIGFP-infected BM, suggesting that constitutive CRE expression might impair myeloid transformation, consistent with previous reports of CRE toxicity.<sup>54</sup>

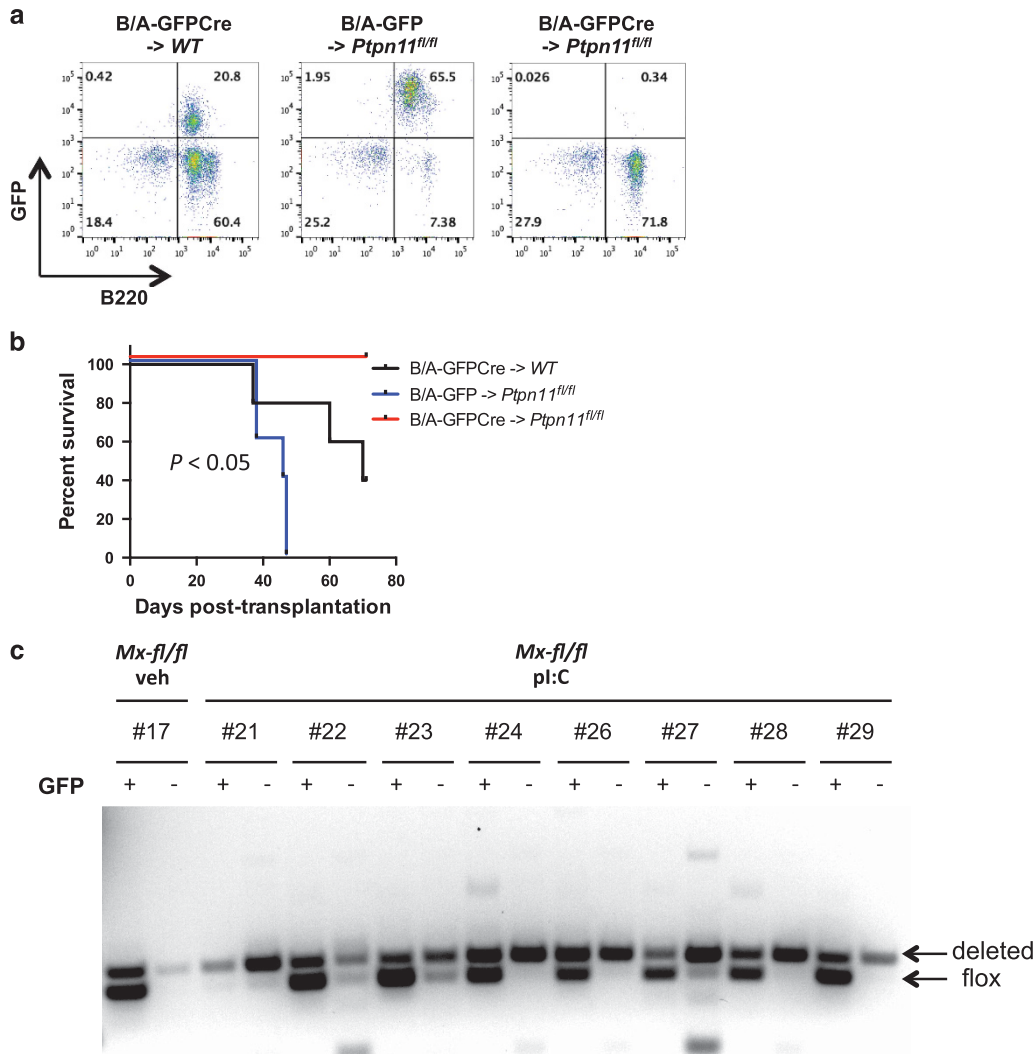
We next transplanted p210MIGFP-Cre transduced, Lin<sup>-</sup> BM cells from WT or *Ptpn11*<sup>fl/fl</sup> mice into sub-lethally irradiated WT recipients (Supplementary Figure S1a). Recipients of BCR-ABL1-expressing WT BM cells developed fatal, CML-like MPN (Figure 1b), characterized by leukocytosis with maturing myeloid cells, splenomegaly and leukemic cell infiltrates in spleen and liver (Supplementary Figures S1b–g). Disease latency and histopathology were comparable to that reported previously.<sup>43</sup> By contrast, the *Ptpn11*<sup>fl/fl</sup> cohort had markedly extended survival, reduced leukocytosis and splenomegaly, and diminished leukemic cell



**Figure 1.** SHP2 is required for BCR-ABL1-evoked myeloid transformation and initiation of CML-like MPN. **(a)** Cytokine-independent colony formation of WT or *Ptpn11*<sup>fl/fl</sup> cells infected with pMIGR1 (GFP), p210MIGFP (BCR-ABL) or p210MIGFPCre (BCR-ABL-GFP-Cre) virus ( $n = 4$ ). (n.s. = not significant;  $***P < 0.001$ ). WT cells infected with p210MIGFP yielded more cytokine-independent colonies than infected with p210MIGFPCre ( $P < 0.001$ ). **(b)** Kaplan–Meier curve of recipients of WT or *Ptpn11*<sup>fl/fl</sup> donor cells infected with p210MIGFPCre virus (right,  $n = 13$ ). Recipients of the *Ptpn11*<sup>fl/fl</sup> donor cells survived significantly longer ( $P = 0.004$ ; log-rank test). A similar trend showing that p210GFP-Cre recipients survive longer than p210GFP recipients was reported by Walz *et al.*<sup>43</sup>



**Figure 2.** SHP2 is required for CML maintenance. **(a)** Kaplan–Meier curve for recipients of *Mx*Cre (*Mx*) or *Mx*Cre;*Ptpn11*<sup>fl/fl</sup> (*Mx-fl/fl*) bone marrow infected with p210MIGFP virus, with ( $n = 10$ ) or without ( $n = 5$ ) poly I:C induction. The *Mx-fl/fl*+poly I:C group survived significantly longer than the other groups ( $P = 0.004$ ; log-rank test). **(b)** GFP<sup>+</sup>Lin<sup>-</sup>Sca1<sup>+</sup>cKit<sup>+</sup> splenocytes were isolated from poly I:C-induced recipients of *Mx* or *Mx-fl/fl* donor cells, and stained with Annexin V and Sytox blue ( $n = 4$ ). Note that apoptosis is significantly higher in the *Mx-fl/fl* group than in *Mx* mice ( $P < 0.01$ ). **(c)** Representative immunoblots of poly I:C-induced *Mx* or *Mx-fl/fl* BCR-ABL1<sup>+</sup> myeloid cell lysates. Similar results were obtained in  $\geq 5$  biological replicates.



**Figure 3.** SHP2 is required for initiation, and most likely, for maintenance, of Ph<sup>+</sup> B-ALL. **(a)** Flow cytometric assessment of leukemic cell engraftment in recipients of WT or *Ptpn11*<sup>fl/fl</sup> donor cells infected with p210MIGFP (B/A-GFP) or p210MIGFPCre (B/A-GFPCre) retrovirus, assessed on day 20 post-transplantation. **(b)** Kaplan–Meier curve of recipients of WT or *Ptpn11*<sup>fl/fl</sup> donor cells infected with p210MIGFP (B/A-GFP) or p210MIGFPCre (B/A-GFPCre) retrovirus (*n* = 5). Survival was longer in B/A-GFPCre > *Ptpn11*<sup>fl/fl</sup> mice (*P* < 0.05; log-rank test). **(c)** GFP<sup>+</sup> (leukemic) or GFP<sup>-</sup> (WT) B-lymphoid cells were isolated from peripheral blood of recipients of *Mx-fl/fl* donor cells, treated with vehicle or poly I:C, as indicated. *Ptpn11* deletion was assessed by PCR of genomic DNA. Deleted and floxed alleles are as indicated. Bands that are not ‘deleted’ or ‘floxed’ are likely non-specific. Note that recipients in the *Mx-fl/fl*+poly I:C group exhibited more efficient deletion in GFP<sup>-</sup> than GFP<sup>+</sup> cells.

infiltration. Notably, 12 days post-transplant, peripheral blood and spleen leukemic cell number were much higher in recipients of WT BM cells, compared with *Ptpn11*<sup>fl/fl</sup> BM recipients (Supplementary Figures S1b and c), while BM engraftment was comparable (Supplementary Figure S1d). Therefore, SHP2 is required for initiation of CML, rather than homing to, or establishment in, the BM niche.

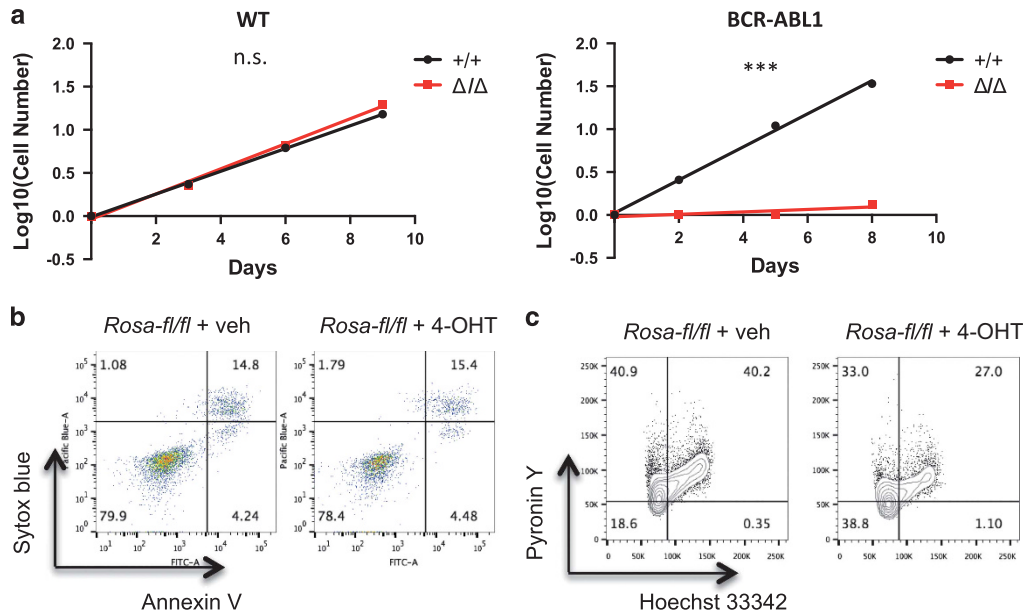
#### SHP2 is required for maintenance of BCR-ABL1-evoked CML-like MPN

To ask if SHP2 is required for CML maintenance, we crossed *Ptpn11*<sup>fl/fl</sup> mice to mice expressing *Cre* under the control of the type I interferon-inducible *Mx* promoter (*MxCre*), and infected BM cells from *MxCre* or *MxCre*;*Ptpn11*<sup>fl/fl</sup> donors with p210MIGFP virus. Between 11 and 15 days following transplantation of infected BM cells into WT recipients, two thirds of the mice in each cohort were injected with poly I:C to induce *Cre* expression in donor cells (Supplementary Figure S2a). All recipients of *MxCre* BM or *MxCre*;

*Ptpn11*<sup>fl/fl</sup> BM that had not been poly I:C-treated succumbed to CML-like MPN within 30 days post-BM transplantation. Poly I:C-treated recipients of *MxCre*;*Ptpn11*<sup>fl/fl</sup> BM cells exhibited delayed/diminished disease and longer survival (Figure 2a). Leukemic cell levels in peripheral blood were reduced substantially (Supplementary Figures S2b and d), and white blood cell counts were normalized (Supplementary Figures S2c and e). All recipients that developed CML-like MPN despite poly I:C induction had incomplete *Ptpn11* deletion in donor leukemic cells (Supplementary Figure S3). Hence, SHP2 is also necessary for CML-like MPN maintenance.

SHP2 is required for the survival of WT primitive hematopoietic cells,<sup>31</sup> so we assessed its role in primitive CML cells. GFP<sup>+</sup>Lin<sup>-</sup>Sca1<sup>+</sup>cKit<sup>+</sup> splenocytes from poly I:C-treated recipient mice were stained with Sytox blue and Annexin V, and analyzed by flow cytometry. Apoptosis was increased markedly in SHP2-deficient cells, compared with controls (Figure 2b).

To study the role of SHP2 in BCR-ABL1-evoked myeloid signaling, we infected SHP2-expressing or -deficient Lin<sup>-</sup> BM cells



**Figure 4.** SHP2 is required for the proliferation of BCR-ABL1<sup>+</sup> pre-B cells *in vitro*. (a) WT *Rosa26-CreER;Ptpn11<sup>fl/fl</sup>* pre-B cells with intact (+/+) or deleted ( $\Delta/\Delta$ ) *Ptpn11* were cultured, and cell number was monitored ( $n = 4$ ). Proliferation rates were not significantly different in +/+ and  $\Delta/\Delta$  cells (left). BCR-ABL1<sup>+</sup> *Rosa26-CreER;Ptpn11<sup>fl/fl</sup>* pre-B cells with intact (+/+) or deleted ( $\Delta/\Delta$ ) *Ptpn11* were cultured, and cell number was monitored ( $n = 4$ ). Note that the proliferation of SHP2-deficient BCR-ABL1<sup>+</sup> pre-B cells was impaired ( $***P < 0.001$ ; *F* test) (right). (b) BCR-ABL1<sup>+</sup> *Rosa26-CreER;Ptpn11<sup>fl/fl</sup>* pre-B cells treated with vehicle or 4-OHT were analyzed by flow cytometry for Annexin V and Sytox blue. Similar results were obtained in four biological replicates. (c) BCR-ABL1<sup>+</sup> *Rosa26-CreER;Ptpn11<sup>fl/fl</sup>* pre-B cells treated with vehicle or 4-OHT were stained with Hoechst 33342 and Pyronin Y. Similar results were obtained in four biological replicates.

with p210MIGFP retrovirus, isolated infected cells, and performed immunoblotting. In the absence of SHP2, phospho-ERK1 and -ERK2 levels were reduced, as were phospho-S6-S235/236 (Figure 2c and Supplementary Figure S2f); the latter sites can be phosphorylated by the ERK-dependent kinase RSK2, as well as by mTORC1.<sup>55</sup> These results are consistent with the requirement for RAS-ERK signaling in BCR-ABL1-induced CML.<sup>56–58</sup> In addition, phospho-SFK-Y416, which marks the catalytically activated form of SFKs, was reduced in the absence of SHP2. By contrast, we did not see significant changes in phospho-AKT or phospho-STAT5 levels.

#### SHP2 is required for Ph<sup>+</sup> B-ALL

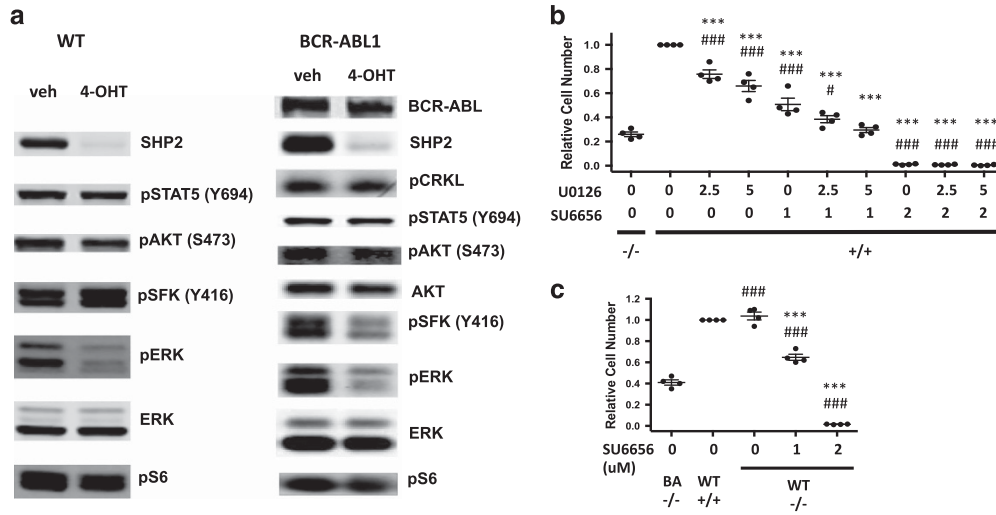
As expected, BCR-ABL1-expressing, IL-7-stimulated bulk BM cells evoked B-ALL in lethally irradiated syngeneic recipients.<sup>12</sup> To probe the role of SHP2 in Ph<sup>+</sup> B-ALL initiation, we transplanted IL-7-stimulated BM from WT or *Ptpn11<sup>fl/fl</sup>* donors transduced with p210MIGFP virus into lethally irradiated syngeneic recipients. Compared with recipients of BCR-ABL1-infected WT BM, recipients of transduced *Ptpn11<sup>fl/fl</sup>* BM had much lower levels of BCR-ABL1<sup>+</sup> B lineage engraftment in their peripheral blood (Figure 3a and Supplementary Figure S4a) and survived longer (Figure 3b). Hence, SHP2 is required for effective initiation of BCR-ABL1<sup>+</sup> B-ALL. Consistent with the effects of GFP-CRE in myeloid cells, we observed less severe disease in recipients of p210MIGFP, compared with recipients of p210MIGFP, BM, possibly reflecting CRE toxicity (Figure 3a).

We next attempted to assess the effect of *Ptpn11* deletion on B-ALL maintenance. Bulk BM cells from *MxCre* or *MxCre;Ptpn11<sup>fl/fl</sup>* donors were infected with p210MIGFP virus, and transplanted into lethally irradiated, syngeneic recipients. After B-ALL developed, half of the recipients in each cohort were treated with poly I:C to induce *Ptpn11* deletion. However, poly I:C alone significantly alleviated disease (Supplementary Figure S4b), consistent with an interferon-induced inhibitory effect against B-ALL. These effects prevented assessment of the role of SHP2 on established B-ALL. We also generated mice (*Rosa26-CreER;Ptpn11<sup>fl/fl</sup>*) expressing a

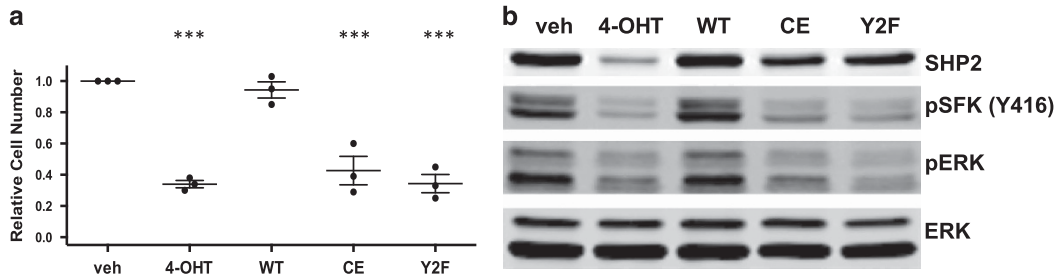
CRE-ER fusion protein, and used tamoxifen to induce *Ptpn11* deletion. Unfortunately, the floxed allele did not delete efficiently, and although tamoxifen-treated mice showed a small increase in survival, *Ptpn11*-undeleted BCR-ABL1 blasts rapidly outgrew (data not shown).

Instead, we compared the abundance of *Ptpn11*-replete and -deleted cells in the same mouse: if SHP2 is required for disease maintenance, then *Ptpn11*-replete leukemic cells should out-compete *Ptpn11*-deficient cells. *Ptpn11* deletion was assessed by PCR of GFP<sup>+</sup> (BCR-ABL1<sup>+</sup>) and GFP<sup>-</sup> (uninfected) peripheral blood cell DNA from poly I:C-induced *MxCre;Ptpn11<sup>fl/fl</sup>* recipients. *Ptpn11* deletion was much more efficient in GFP<sup>-</sup>, than in GFP<sup>+</sup>, cells (Figure 3c), indicating that SHP2 is required specifically for BCR-ABL1<sup>+</sup> B-lymphoid proliferation/survival.

SHP2 deficiency selectively affects cycling of BCR-ABL1<sup>+</sup> pre-B cells We compared the effects of SHP2 deficiency on WT and BCR-ABL1<sup>+</sup> pre-B-cell proliferation *in vitro*. *Rosa26-CreER;Ptpn11<sup>fl/fl</sup>* pre-B cells were cultured in IL7-supplemented OptiMEM-10%FBS, and *Ptpn11* deletion was induced with 4-OHT in half of the cells (Supplementary Figure S5a). Unexpectedly, SHP2-deficient WT cells proliferated at the same rate as untreated controls (Figure 4a and Supplementary Figures S5b and c); hence, SHP2 is dispensable for WT pre-B-cell proliferation *in vitro*. Furthermore, *Cd19<sup>tm1(cre)Cgn</sup>;Ptpn11<sup>fl/fl</sup>* mice exhibited grossly normal B-cell development and agonist responses (Supplementary Figure S6), and preliminary studies of *Cd79a<sup>tm1(cre)Reth</sup>;Ptpn11<sup>fl/fl</sup>* mice yielded similar results. Next, we cultured BCR-ABL1<sup>+</sup> *Rosa26-CreER* and BCR-ABL1<sup>+</sup> *Rosa26-CreER;Ptpn11<sup>fl/fl</sup>* pre-B cells, and induced *Ptpn11* deletion in the latter with 4-OHT. Remarkably, SHP2 deficiency selectively abrogated the proliferation of BCR-ABL1<sup>+</sup> pre-B cells (Figure 4a and Supplementary Figure S5c). The allosteric SHP2 inhibitor SHP099<sup>59</sup> also markedly suppressed BCR-ABL1<sup>+</sup> cell proliferation (Supplementary Figure S7). Hence, SHP2 is required for BCR-ABL1<sup>+</sup>-evoked, but not WT, pre-B-cell proliferation. SHP2 deficiency did not induce apoptosis in BCR-ABL1<sup>+</sup> cells (Figure 4b



**Figure 5.** SFKs and ERK mediate the SHP2 requirement in BCR-ABL1<sup>+</sup> pre-B cells. **(a)** Status of selected signaling molecules in WT or BCR-ABL1<sup>+</sup> *Rosa26-CreER;Ptpn11<sup>fl/fl</sup>* pre-B cells treated with vehicle or 4-OHT. Similar results were obtained in four biological replicates. **(b)** SHP2-replete BCR-ABL1<sup>+</sup> pre-B cells were treated with the MEK/ERK inhibitor U0126 and/or the SFK inhibitor SU6656 at different concentrations. Viable cell numbers 3 days post-drug treatment were compared with SHP2-replete BCR-ABL1<sup>+</sup> vehicle control (denoted by ‘\*’) or SHP2-deficient control (denoted by ‘#’) groups. The significance of the cell number difference between combination treatment and SHP2 deficiency is decreased compared with the difference between single-agent treatment and SHP2 deficiency (mean  $\pm$  s.e.m.;  $P < 0.05$  between U0126<sub>(2.5 μM)</sub>+SU6656<sub>(1 μM)</sub> versus SHP2<sup>-/-</sup>) and the difference is not significant between U0126<sub>(5 μM)</sub>+SU6656<sub>(1 μM)</sub> versus SHP2<sup>-/-</sup>. **(c)** SHP2-deficient WT pre-B cells were treated with SU6656 (0, 1, 2 μM). Viable cell numbers from SHP2-deficient WT groups were compared with SHP2-replete WT (denoted by ‘\*’) or SHP2-deficient BCR-ABL1<sup>+</sup> (denoted by ‘#’) groups ( $n = 4$ ). 1 μM SU6656 treatment recapitulates most of the proliferation inhibition by SHP2 deficiency, although the difference is still significant (0.65  $\pm$  0.06 versus 0.41  $\pm$  0.05, mean  $\pm$  s.e.m). \*\*\* $P < 0.001$ , # $P < 0.05$ , ### $P < 0.001$ ; ANOVA with Bonferroni post-test multiple comparison.



**Figure 6.** SHP2 domains required for signaling and proliferation. **(a)** Relative viable cell number after 2-day cultures, pooled from three biological replicates. The proliferation of *Rosa26-CreER;Ptpn11<sup>fl/fl</sup>* BCR-ABL1<sup>+</sup> cells subjected to the indicated treatments was assessed: (1) empty vector infection followed by vehicle treatment (veh); (2) empty vector infection followed by 4-OHT treatment (4-OHT); (3–5) reconstitution with SHP2 variants (WT, C459E or Y542F/Y580F) followed by 4-OHT treatment. Viable cell numbers were compared with the vehicle group. ( $n = 3$ ; mean  $\pm$  s.e.m., \*\*\* $P < 0.001$ ; ANOVA with Bonferroni post-test) **(b)** Comparison of phospho-SFK(Y416) and phospho-ERK in *Rosa26-CreER;Ptpn11<sup>fl/fl</sup>* BCR-ABL1<sup>+</sup> cells from experiments in **(a)**. Similar results were obtained in three biological replicates.

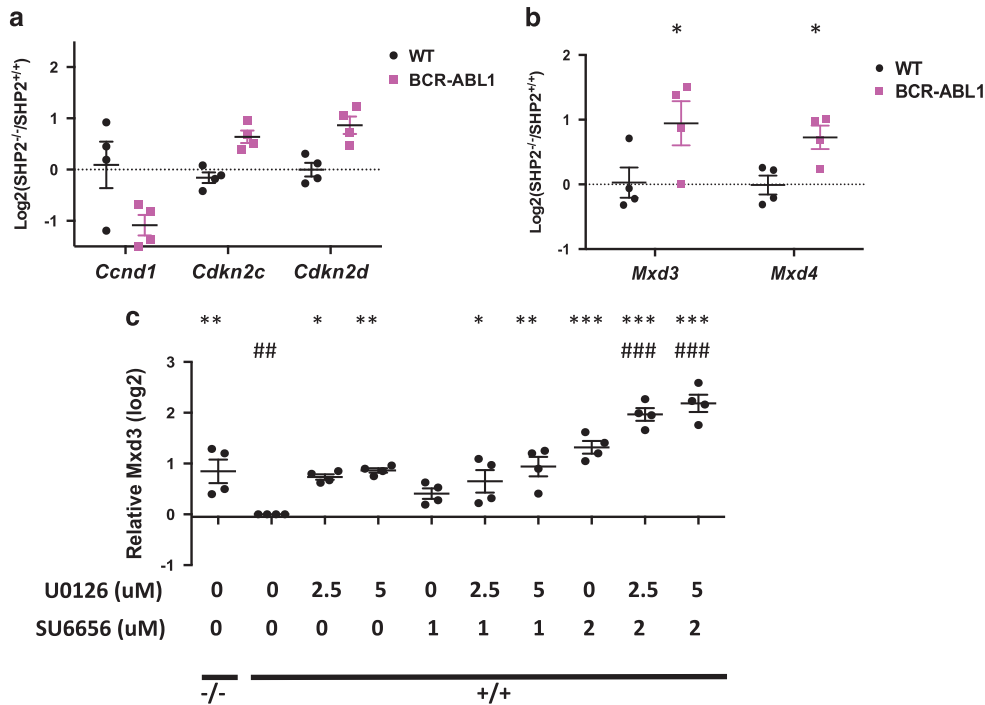
and Supplementary Figure S5d), but instead, caused increased G0 and decreased G1 and S-G2-M cells (Figure 4c and Supplementary Figure S5e).

#### SFK and MEK-ERK signaling contribute to the differential SHP2 requirement

We next assessed the effects of SHP2 on WT and BCR-ABL1<sup>+</sup> pre-B-cell signaling. In WT cells, SHP2 deficiency reduced phospho-ERK1 and phospho-ERK2 levels (Figure 5a and Supplementary Figure S8a), indicating that WT pre-B cells are insensitive to a reduction of ERK signaling of this magnitude. In WT pre-B cells, phospho-AKT (S473), phospho-STAT5 (Y694) and phospho-SFK (Y416) levels were not affected by SHP2 deficiency. In BCR-ABL1<sup>+</sup> pre-B cells, *Ptpn11* deletion also led to significantly lower levels of phospho-ERK1 and phospho-ERK2, but comparable levels of phospho-AKT (S473) and phospho-STAT5 (Y694) (Figure 5a and Supplementary Figure S8a). However, *Ptpn11* deletion also compromised SFK activation, as judged by phospho-SFK (Y416),

only in BCR-ABL1<sup>+</sup> pre-B cells (Figure 5a and Supplementary Figure S8a).

To ask if decreased MEK/ERK and/or SFK activity contribute to the requirement for SHP2 for BCR-ABL1<sup>+</sup> pre-B-cell proliferation, we treated (SHP2-replete) BCR-ABL1<sup>+</sup> pre-B cells with MEK/ERK (U0126) and/or SFK-selective (SU6656)<sup>60</sup> inhibitors. At 1 μM, SU6656 inhibited SFK activity (as assessed by phospho-SFK Y416) to levels similar to that caused by SHP2 deficiency (Supplementary Figure S8b). This dose also impaired BCR-ABL1<sup>+</sup> pre-B-cell proliferation, although not by as much as *Ptpn11* deletion (Figure 5b). At 2.5 μM, U0126 diminished phospho-ERK2 to levels comparable to those in SHP2-deficient cells, and had a smaller, but significant, effect on proliferation (Supplementary Figure S8b). Combined SU6656-U0126 treatment recapitulated the proliferation inhibition caused by SHP2 deficiency. Treatment with another selective SFK inhibitor, PP2, yielded similar results (data not shown). Therefore, decreased proliferation of SHP2-deficient, BCR-ABL1<sup>+</sup> pre-B cells results from the combined effects of impaired SFK and ERK activation, with the former playing a more



**Figure 7.** SHP2 affects distinct transcriptional programs in WT and BCR-ABL1<sup>+</sup> pre-B cells. **(a)** Validation of differential expression of cell cycle regulatory genes by q-RT-PCR ( $n = 4$ ). *Ccnd1*, *Cdkn2c* and *Cdkn2d* are regulated by SHP2 in BCR-ABL1<sup>+</sup>, but not WT, pre-B cells. **(b)** qRT-PCR validation of genes involved in regulation of MYC transcription ( $n = 4$ ). The log ratios of *Mxd3* or *Mxd4* transcription levels in SHP2-deficient versus SHP2-replete cells are shown. *Mxd3* and *Mxd4* mRNA levels are not regulated by SHP2 deficiency in WT pre-B cells, but are significantly upregulated in BCR-ABL1<sup>+</sup> pre-B cells. **(c)** BCR-ABL1<sup>+</sup> SHP2-deficient (-/-) or replete (+/+) pre-B cells were treated with U0126 and/or SU6656 at the indicated concentrations for 2 days. Relative mRNA levels for *Mxd3* were quantified ( $n = 4$ ). Transcription levels were compared with SHP2-replete BCR-ABL1<sup>+</sup> vehicle control (denoted by '\*') or SHP2-deficient control (denoted by '#') groups. (\* $P < 0.05$ , \*\* $P < 0.01$ , \*\*\* $P < 0.001$ , ## $P < 0.01$ , ### $P < 0.001$ ; ANOVA with Bonferroni post-test).

important role. SU6656 did not affect ERK activation, nor did U0126 affect SFK activation; so these pathways function independently downstream of SHP2 in pre-B cells.

The ability of WT pre-B cells to activate SFKs without SHP2 might explain why they do not require SHP2 to proliferate. Treatment of SHP2-deficient (BCR-ABL1-negative) pre-B cells with SU6656 (1 μM) reduced phospho-SFK to levels slightly more than in SHP2-deficient BCR-ABL1<sup>+</sup> cells, whereas 2 μM SU6656 lowered p-SFK levels to a slightly greater extent (Supplementary Figure S8c). Remarkably, these doses of SU6656 inhibited SHP2-deficient WT pre-B-cell proliferation to an extent slightly less than, or slightly more than, did SHP2-deficiency in BCR-ABL1<sup>+</sup> pre-B cells (Figure 5c). Persistent SFK signaling probably explains why SHP2 is dispensable for WT pre-B-cell proliferation.

#### Structural determinants of SHP2 required for BCR-ABL1<sup>+</sup> pre-B-cell proliferation

To identify sub-domains of SHP2 required for BCR-ABL1<sup>+</sup> signaling in pre-B cells, we compared proliferation and signaling in SHP2-sufficient (veh) or -deficient BCR-ABL1<sup>+</sup> pre-B cells reconstituted with empty vector (4-OHT), WT SHP2 (WT), the phosphatase-inactive C459E mutant (CE), or a mutant lacking both C-terminal tyrosine residues, Y542F/Y580F (Y2F). WT SHP2 rescued proliferation and ERK and SFK activity. By contrast, the CE or Y2F mutant did not restore proliferation or signaling (Figure 6 and Supplementary Figure S9), even though each was expressed at levels similar to WT SHP2. SH2 domain engagement is also essential, given the effects of SHP099 (Supplementary Figure S7), which locks SHP2 in the closed form and prevents N-SH2/p-Tyr peptide binding.<sup>59,61</sup>

#### Distinct effects of SHP2 on transcriptional profiles of BCR-ABL1<sup>+</sup> and WT pre-B cells

To gain further insight into the role of SHP2 in WT and BCR-ABL1<sup>+</sup> pre-B cells, we performed RNA-seq. Unsupervised hierarchical clustering and principal component analysis revealed good separation between both WT and BCR-ABL1<sup>+</sup> cells and between SHP2-deficient and -replete cells, respectively (Supplementary Figures S10a,b). As expected,<sup>62,63</sup> BCR-ABL1<sup>+</sup> cells (compared with WT) showed upregulation of ERK targets and downregulation of interferon-alpha response genes (Supplementary Figure S11 and Supplementary Tables S1 and S2). Supervised comparisons revealed that SHP2 significantly regulates the expression of ~770 genes in WT, and >1900 genes in BCR-ABL1<sup>+</sup> pre-B cells (Supplementary Figure S10c). Also as expected, SHP2 deficiency decreased ERK-regulated gene expression in WT and BCR-ABL1<sup>+</sup> samples (Supplementary Table S3). TLR-regulated genes also were decreased by SHP2-deficiency in both contexts. Shared upregulated genes were not enriched for any curated Reactome pathway (Supplementary Table S4).

Next, we compared BCR-ABL1<sup>+</sup> SHP2-deficient versus SHP2-expressing cells and WT SHP2-deficient versus SHP2-expressing cells, respectively. SHP2 deficiency in normal pre-B cells affected genes annotated by the terms metabolic process and glycolysis (Supplementary Figure S10d and Supplementary Table S5). In BCR-ABL1<sup>+</sup> cells, SHP2-deficiency also affected genes for metabolic and biosynthetic processes; in addition, cell-proliferation genes were altered (Supplementary Figure S10d and Supplementary Table S6). We identified, and validated by qRT-PCR, differential effects of SHP2 deficiency on cell cycle regulators in WT and BCR-ABL1<sup>+</sup> cells. *Ccnd1* (encoding CYCLIN D1) expression was decreased, while genes encoding the CDK inhibitors p18 and p19 (*Cdkn2c* and *Cdkn2d*) were increased preferentially by SHP2 deficiency in

BCR-ABL1<sup>+</sup> cells (Figure 7a). These results comport with the cell cycle impairment seen in SHP2-deficient BCR-ABL1<sup>+</sup> pre-B cells (Figure 4c).

Consistent with GAB2 regulating multiple signal relay molecules,<sup>15,64</sup> more genes and gene sets were affected by GAB2 deletion<sup>21</sup> than by SHP2 deficiency (Supplementary Figure S12a and Supplementary Tables S7 and S8). Nevertheless, the top gene sets affected by either deficiency showed strong overlap and similar FDR q-values (Supplementary Figure S12b). Gene sets downregulated only by GAB2 deficiency included multiple DNA repair/synthesis-related and metastasis-related gene sets, among others (Supplementary Tables S7 and S8).

GSEA revealed downregulation of myelocytomatosis (MYC)-induced signatures in SHP2- (and GAB2-) deficient, BCR-ABL1<sup>+</sup> cells, but no significant alteration in SHP2-deficient WT cells (Supplementary Figure S13a and Supplementary Tables S7 and S9). Enrichr analysis showed that genes downregulated by SHP2 deficiency in BCR-ABL1<sup>+</sup> cells were highly enriched for binding sites for MYC and its co-factors (Supplementary Table S12). Genes downregulated in SHP2-deficient WT cells also were enriched for MYC/co-factor binding sites, but with much lower overlap and significance (Supplementary Figure S13b and Supplementary Table S13). Intriguingly, multiple MYC targets were regulated in opposite directions in SHP2-deficient BCR-ABL1<sup>+</sup> and WT pre-B cells. For example, glycolytic gene expression was increased in WT cells, but downregulated in BCR-ABL1<sup>+</sup> cells (Supplementary Figures S13c and d). Hence, SHP2 deficiency has quantitatively and qualitatively distinct effects on the MYC-dependent transcriptome ('MYC regulome') in BCR-ABL1<sup>+</sup> (compared with WT) pre-B cells.

Gene sets upregulated by SHP2 deficiency in BCR-ABL1<sup>+</sup> and WT cells differed widely. Interferon response genes were among the top upregulated sets in BCR-ABL1<sup>+</sup> cells (Supplementary Figure S14 and Supplementary Table S10), whereas hypoxia response genes were the top upregulated group in WT cells (Supplementary Table S11). Upregulated genes in WT and BCR-ABL1 contexts were enriched comparably for binding sites for EP300, ETS1 and several other transcription factors/regulators (Supplementary Tables S14 and S15). Genes with binding sites for CHD2 and ZKSCAN1 were enriched preferentially in BCR-ABL1+ cells, whereas those with RAD21 binding sites were enriched preferentially in WT cells (Supplementary Tables S14 and S15).

Given the key role of MYC in cell proliferation,<sup>65</sup> the selectively impaired proliferation of SHP2-deficient BCR-ABL1+ pre-B cells probably reflects alteration of the MYC regulome, at least in part. We asked why MYC target genes are regulated differentially in SHP2-deficient WT and BCR-ABL1<sup>+</sup> cells. *Myc* mRNA levels were unaffected by SHP2-deficiency in WT or BCR-ABL1<sup>+</sup> cells (Supplementary Figure S15a). MYC stability is regulated by ERK<sup>66</sup> and, consistent with impaired ERK activation in SHP2-deficient WT and BCR-ABL1<sup>+</sup> pre-B cells, MYC levels were decreased in both, but to similar extents (Supplementary Figure S15b). By contrast, *Mxd3* and *Mxd4* were upregulated by SHP2 deficiency only in BCR-ABL1<sup>+</sup>, but not in WT cells (Figure 7b and Supplementary Figure S15c). These increases were recapitulated by co-inhibition of ERK and SFKs in SHP2-replete BCR-ABL1+ cells (Figure 7c and Supplementary Figure S15d). MXD3 and MXD4 compete with MYC for binding to MAX and inhibit transcription of a subset of MYC targets involved in proliferation and transformation.<sup>67</sup> Failure to repress *Mxd3* and *Mxd4* transcription might explain the more profound impairment of MYC-dependent transcription in SHP2-deficient BCR-ABL1 pre-B cells.

## DISCUSSION

Our genetic approach enabled us to assess the role of SHP2 in BCR-ABL1-induced neoplasia in well-characterized mouse models. We find that SHP2 is essential for initiation and maintenance of CML-like MPN, and initiation and, most likely, maintenance, of Ph<sup>+</sup>

B-ALL. Similar to its effects in WT hematopoietic stem cells,<sup>31,32</sup> SHP2 is required for the survival of phenotypic CML-SCs. Intriguingly, SHP2, and in particular, SHP2 catalytic activity and its C-terminal tyrosine residues, is essential for BCR-ABL1<sup>+</sup>, but not WT, pre-B-cell proliferation. SHP2 mediates ERK activation in WT and BCR-ABL+ cells, but its differential effect on proliferation correlates with, and is likely caused by, distinct effects on SFKs. Transcriptional profiling suggests that the combined effects of ERK and SFKs, perhaps by repressing *Mxd3/4* transcription, are needed to fully activate the MYC regulome.

Previous studies implicated SHP2 in critical events downstream of BCR-ABL1, but none addressed its role directly in a pathologically relevant context.<sup>21,40</sup> For example, *PTPN11* knock-down reduces cytokine-independent colony formation by CD34<sup>+</sup> CML cells *in vitro*,<sup>68</sup> but its effects on CML and Ph+ B-ALL development remained unclear. SHP2 is required for BCR-ABL transformation of a yolk sac cell line,<sup>40</sup> but BCR-ABL1-induced CML and B-ALL are typically adult diseases, and adult and embryonic hematopoiesis differ.<sup>69</sup> GAB2, and its SHP2 binding sites, is essential for induction of Ph<sup>+</sup> hematopoietic neoplasia in mice.<sup>21</sup> Yet other signaling molecules might bind the same sites, and SHP2 uses other adaptors/interactors besides GAB2; hence, loss of GAB2/SHP2 binding might have underestimated the role of SHP2 in BCR-ABL1 disease.<sup>24,25</sup> Notably, SHP2 binding sites on GAB2 are required for full activation of STAT5 and AKT,<sup>21</sup> but SHP2 deficiency did not affect STAT5 or AKT activation in the current study. One potential explanation for this apparent discrepancy is that the SHP2 binding sites of GAB2 might be shared by other proteins. For example, SHP2 and SOCS3 both interact with pY759 of gp130.<sup>70,71</sup> Likewise, other proteins might share the SHP2 binding sites of GAB2. Alternatively, whereas GAB2-bound SHP2 can activate AKT and STAT5, other signaling proteins might inhibit AKT and/or STAT5 via SHP2, such that the net effect of SHP2 depletion differs from disruption of GAB2-SHP2 interaction.

The relationship between SHP2 and the RAS-ERK pathway is well documented.<sup>24,25</sup> In hematopoietic cells, gain-of-function *PTPN11* mutants induce RAS-ERK hyper-activation and can cause juvenile myelomonocytic leukemia. Conversely, *Ptpn11* deletion impairs ERK activation by growth factors and cytokines in hematopoietic stem cells and progenitors.<sup>31,32</sup> SHP2 also is required for ERK activation in WT and BCR-ABL1 transformed myeloid and pre-B cells. Surprisingly, however, WT pre-B cells, unlike myeloid progenitors<sup>31,32</sup> and multiple other proliferating cells,<sup>72,73</sup> are agnostic to defective ERK activation. How pre-B cells avoid the requirement for ERK activation seen in almost all other proliferative cells and tissues awaits further investigation.

Regulation of SFKs by SHP2 also has been reported.<sup>41,74,75</sup> For as yet unclear reasons, SHP2 is required for SFK activation in BCR-ABL1-transformed, but not WT pre-B cells. SHP2 also is required for BCR-ABL1<sup>+</sup>, but not WT, pre-B-cell proliferation. Inhibitor studies suggest that SFKs (to a major extent) and ERK (to a lesser extent) contribute independently to this selective requirement. Likewise, SHP2-independent SFK activation in WT cells is likely a (the) major reason for the differential requirement for SHP2 in BCR-ABL1<sup>+</sup> and WT pre-B-cell proliferation. Consistent with our results, SFKs, although dispensable for CML, are essential for Ph<sup>+</sup> B-ALL.<sup>76</sup>

Previous studies suggested that SHP2 catalytic activity is required for ERK and/or SFK activation.<sup>41,77</sup> The C-terminal tyrosines (Y542 and Y580) modulate activation of ERK downstream of multiple RTKs,<sup>78</sup> although their roles in SFK activation had not been defined. SH2 domain/pY peptide interaction also is required for myeloid transformation by leukemogenic SHP2 mutants.<sup>79</sup> We found that SH2 domain engagement, PTP activity and the C-terminal tyrosines are required for BCR-ABL1<sup>+</sup> pre-B-cell proliferation and full activation of ERK and SFKs by BCR-ABL1.

Our RNA-seq studies reveal transcriptional programs differentially regulated by SHP2 in WT and BCR-ABL1<sup>+</sup> pre-B cells. GSEA and Enrichr strongly suggest that defective MYC-driven



transcription is a major consequence of SHP2 deficiency and is affected differentially in BCR-ABL1<sup>+</sup> and WT pre-B cells. Some MYC-regulated genes are affected by SHP2 deficiency in BCR-ABL1-transformed, but not WT B cells, whereas others, including glycolytic genes, are regulated in opposite directions. Failure to engage Warburg respiration, a common feature of malignant B cells and other tumor cells,<sup>80,81</sup> might contribute to cell cycle arrest in SHP2-deficient BCR-ABL1<sup>+</sup> pre-B cells. As MYC is a key transcriptional hub for B-cell growth and proliferation control,<sup>82</sup> differential MYC transcription is likely to be a(the) major reason for the impaired proliferation of BCR-ABL1<sup>+</sup> SHP2-deficient B cells.

Downregulated MYC activity also is likely mediated by decreased SFK and/or ERK activation. SFKs increase MYC mRNA/protein levels,<sup>60,83–85</sup> and MYC is stabilized by ERK-mediated phosphorylation.<sup>66,73,84</sup> Yet *Myc* upregulation/MYC stabilization does not explain the differential regulation of MYC-dependent transcription by SHP2. Instead, we find that SFKs and/or ERK regulate cofactors/regulators of MYC: SHP2 deficiency elevates *Mxd3* and *Mxd4* specifically in BCR-ABL1<sup>+</sup> pre-B cells, and this regulation is recapitulated by co-inhibition of ERK and SFKs.

MXD3 and MXD4 can occupy the MYC E-box, inhibit MYC/MAX binding and repress MYC-induced transformation.<sup>86</sup> Serum or insulin induce phosphorylation-directed degradation of MXD1 in HeLa cells,<sup>87</sup> but transcriptional regulation of MXDs has not been reported. Notably, inspection of RNA-seq data from PDGF-stimulated smooth muscle cells<sup>88</sup> reveals that *MXD1*, *MXD3*, *MXD4* and *MNT*, which encodes an MXD-like protein, are downregulated. STK38 reportedly regulates MYC-dependent transcription in ST486 B-cell lymphoma cells by affecting MYC turnover.<sup>89</sup> In that data set, however, *MXD4* and *MNT* also were upregulated by *STK38* silencing. Re-analysis of other studies<sup>90,91</sup> also reveals regulation of *MXDs* and/or *MNT* mRNA levels by various cytokines or growth factors. Hence, regulation of the *MXD* family<sup>67</sup> might be a general, but under-appreciated, mechanism for modulating MYC-dependent transcription. MXD3/4 upregulation by SHP2 deficiency in BCR-ABL1<sup>+</sup> pre-B cells likely contributes to inhibition of MYC-mediated transcription.

Although altered MYC-dependent transcription probably is a major contributor to defective proliferation in SHP2-deficient BCR-ABL1 pre-B cells, Enrichr analysis suggests that several other transcription factors/regulators also are regulated differentially, including BHLHE40, ETS1, CHD1 and CHD2. Further studies are needed to determine whether these molecules contribute to the specific requirement of SHP2 in BCR-ABL1<sup>+</sup> pre-B cells.

IFN- $\alpha$  responsive genes also were upregulated by SHP2 deficiency specifically in BCR-ABL1<sup>+</sup> cells. IFN- $\alpha$  has been used to treat Ph<sup>+</sup> B-ALL (as well as CML) and improves survival.<sup>92,93</sup> IFN- $\alpha$  also induces growth arrest, and sometimes differentiation, in human and murine B-cell lines.<sup>94–96</sup> We did not detect differential expression of drivers/markers of B-cell differentiation, including *Ikzf1*, *Spi1*, *Pax5*, *Ebf1*, *Tcf3*, *Tnf13* and *Tnf13b*<sup>97–99</sup> (data not shown); so enhanced differentiation is unlikely to contribute to the effects of SHP2 deficiency in BCR-ABL1<sup>+</sup> B-ALL.

In summary, we find that SHP2 is essential for the pathogenesis of BCR-ABL1-evoked myeloid and lymphoid neoplasia. SHP2 is required specifically for BCR-ABL1<sup>+</sup>, but not WT, pre-B-cell proliferation, because it mediates SFK and ERK activation in BCR-ABL1<sup>+</sup> pre-B cells, but only ERK activation in WT pre-B cells. In BCR-ABL1<sup>+</sup> cells, SHP2 suppresses *Mxd3* and *Mxd4* through ERK and SFKs, likely leading to induction of select MYC targets, whereas in WT cells, SHP2 does not regulate the transcription of these genes. Our results suggest that SHP2 might be an alternative/additional target in BCR-ABL1-induced malignancies, a prospect made tangible with the recent development of bioavailable and highly selective SHP2 inhibitor.<sup>59</sup>

## CONFLICT OF INTEREST

The authors declare no conflict of interest.

## ACKNOWLEDGEMENTS

We thank the Princess Margaret Genomics Centre for RNA-seq, and the Sick Kids-UHN Flow Cytometry Facility for fluorescence-activated cell sorting. This work was supported by R35CA49152 to BGN, and NIH R01 CA090576 to RAVE. BGN was a Canada Research Chair, Tier 1, and work in his laboratory was partially supported by the Princess Margaret Cancer Foundation and a grant from the Ontario Ministry of Health and Long Term Care.

## AUTHOR CONTRIBUTIONS

SG and BGN designed the experiments. SG, GC and WY performed the experiments. SG, AS, ZL and CV analyzed RNA-seq data. RAVE provided essential advice. SG and BGN wrote and all authors edited the manuscript.

## REFERENCES

- Fainstein E, Marcelle C, Rosner A, Canaan E, Gale RP, Drexler O *et al*. A new fused transcript in Philadelphia chromosome positive acute lymphocytic leukaemia. *Nature* 1987; **330**: 386–388.
- Nowell PC, Hungerford DA. A minute chromosome in chronic granulocytic leukemia. *Science* 1960; **132**: 1488–1501.
- Kalmanti L, Saussele S, Lauseker M, Müller MC, Dietz CT, Heinrich L *et al*. Safety and efficacy of imatinib in CML over a period of 10 years: data from the randomized CML-study IV. *Leukemia* 2015; **29**: 1123–1132.
- Graham SM, Jørgensen HG, Allan E, Pearson C, Alcorn MJ, Richmond L *et al*. Primitive, quiescent, Philadelphia-positive stem cells from patients with chronic myeloid leukemia are insensitive to ST1571 in vitro. *Blood* 2002; **99**: 319–325.
- Jiang X, Zhao Y, Smith C, Gasparetto M, Turhan A, Eaves A *et al*. Chronic myeloid leukemia stem cells possess multiple unique features of resistance to BCR-ABL targeted therapies. *Leukemia* 2007; **21**: 926–935.
- Corbin AS, Agarwal A, Loriaux M, Cortes J, Deininger MW, Druker BJ. Human chronic myeloid leukemia stem cells are insensitive to imatinib despite inhibition of BCR-ABL activity. *J Clin Invest* 2011; **121**: 396–409.
- Tanguy-Schmidt A, Rousselot P, Chalandon Y, Cayuela J-M, Hayette S, Vekemans M-C *et al*. Long-term follow-up of the imatinib GRAAPH-2003 study in newly diagnosed patients with de novo Philadelphia chromosome-positive acute lymphoblastic leukemia: a GRAALL study. *Biol Blood Marrow Transplant* 2013; **19**: 150–155.
- Soverini S, Colarossi S, Gnani A, Rosti G, Castagnetti F, Poerio A *et al*. Contribution of ABL kinase domain mutations to imatinib resistance in different subsets of Philadelphia-positive patients: by the GIMEMA Working Party on Chronic Myeloid Leukemia. *Clin Cancer Res* 2006; **12**: 7374–7379.
- Pfeifer H, Wassmann B, Pavlova A, Wunderle L, Oldenburg J, Binckebanck A *et al*. Kinase domain mutations of BCR-ABL frequently precede imatinib-based therapy and give rise to relapse in patients with de novo Philadelphia-positive acute lymphoblastic leukemia (Ph+ ALL). *Blood* 2007; **110**: 727–734.
- Duy C, Hurtz C, Shojaaee S, Cerchiotti L, Geng H, Swaminathan S *et al*. BCL6 enables Ph+ acute lymphoblastic leukaemia cells to survive BCR-ABL1 kinase inhibition. *Nature* 2011; **473**: 384–388.
- Daley GQ, Van Etten RA, Baltimore D. Blast crisis in a murine model of chronic myelogenous leukemia. *Proc Natl Acad Sci USA* 1991; **88**: 11335–11338.
- Li S, Ilaria RL, Million RP, Daley GQ, Van Etten RA. The P190, P210, and P230 forms of the BCR/ABL oncogene induce a similar chronic myeloid leukemia-like syndrome in mice but have different lymphoid leukemogenic activity. *J Exp Med* 1999; **189**: 1399–1412.
- Pear WS, Miller JP, Xu L, Pui JC, Soffer B, Quackenbush RC *et al*. Efficient and rapid induction of a chronic myelogenous leukemia-like myeloproliferative disease in mice receiving P210 bcr/abl-transduced bone marrow. *Blood* 1998; **92**: 3780–3792.
- Pendergast OG, Quilliam LA, Cripe LD, Bassing CH, Dai Z, Li N *et al*. BCR-ABL-induced oncogenesis is mediated by direct interaction with the SH2 domain of the GRB-2 adaptor protein. *Cell* 1993; **75**: 175–185.
- Ahmed W, Van Etten RA. Signal transduction in the chronic leukemias: implications for targeted therapies. *Curr Hematol Malig Rep* 2013; **8**: 71–80.
- Sattler M, Mohi MG, Pride YB, Quinnan LR, Malouf Na, Podar K *et al*. Critical role for Gab2 in transformation by BCR/ABL. *Cancer Cell* 2002; **1**: 479–492.
- Gu H, Pratt JC, Burakoff SJ, Neel BG. Cloning of p97/Gab2, the major SHP2-binding protein in hematopoietic cells, reveals a novel pathway for cytokine-induced gene activation. *Mol Cell* 1998; **2**: 729–740.

- 18 Million RP, Van Etten RA. The Grb2 binding site is required for the induction of chronic myeloid leukemia-like disease in mice by the Bcr/Abl tyrosine kinase. *Blood* 2000; **96**: 664–670.
- 19 Zhang X, Subrahmanyam R, Wong R, Gross AW, Ren R. The NH(2)-terminal coiled-coil domain and tyrosine 177 play important roles in induction of a myeloproliferative disease in mice by Bcr-Abl. *Mol Cell Biol* 2001; **21**: 840–853.
- 20 He Y, Wertheim JA, Xu L, Miller JP, Karnell FG, Choi JK et al. The coiled-coil domain and Tyr177 of bcr are required to induce a murine chronic myelogenous leukemia-like disease by bcr/abl. *Blood* 2002; **99**: 2957–2968.
- 21 Gu S, Chan WW, Mohi G, Rosenbaum J, Sayad A, Lu Z et al. Distinct GAB2 signaling pathways are essential for myeloid and lymphoid transformation and leukemogenesis by BCR-ABL1. *Blood* 2016; **127**: 1803–1813.
- 22 Noguchi T, Matozaki T, Horita K, Fujioka Y, Kasuga M. Role of SH-PTP2, a protein-tyrosine phosphatase with Src homology 2 domains, in insulin-stimulated Ras activation. *Mol Cell Biol* 1994; **14**: 6674–6682.
- 23 Neel BG, Gu H, Pao L. The ‘Shp’ing news: SH2 domain-containing tyrosine phosphatases in cell signaling. *Trends Biochem Sci* 2003; **28**: 284–293.
- 24 Chan G, Kalaitzidis D, Neel BG. The tyrosine phosphatase Shp2 (PTPN11) in cancer. *Cancer Metastasis Rev* 2008; **27**: 179–192.
- 25 Grossmann KS, Rosário M, Birchmeier C, Birchmeier W. The tyrosine phosphatase Shp2 in development and cancer. *Adv Cancer Res* 2010; **106**: 53–89.
- 26 Hof P, Pluskey S, Dhe-Paganon S, Eck MJ, Shoelson SE. Crystal structure of the tyrosine phosphatase SHP-2. *Cell* 1998; **92**: 441–450.
- 27 Barford D, Neel BG. Revealing mechanisms for SH2 domain mediated regulation of the protein tyrosine phosphatase SHP-2. *Structure* 1998; **6**: 249–254.
- 28 Lechleider RJ, Sugimoto S, Bennett AM, Kashishian AS, Cooper JA, Shoelson SE et al. Activation of the SH2-containing phosphotyrosine phosphatase SH-PTP2 by its binding site, phosphotyrosine 1009, on the human platelet-derived growth factor receptor. *J Biol Chem* 1993; **268**: 21478–21481.
- 29 Tsutsumi R, Masoudi M, Takahashi A, Fujii Y, Hayashi T, Kikuchi I et al. YAP and TAZ, Hippo signaling targets, act as a rheostat for nuclear SHP2 function. *Dev Cell* 2013; **26**: 658–665.
- 30 Qu CK, Shi ZQ, Shen R, Tsai FY, Orkin SH, Feng GS. A deletion mutation in the SH2-N domain of Shp-2 severely suppresses hematopoietic cell development. *Mol Cell Biol* 1997; **17**: 5499–5507.
- 31 Chan G, Cheung LS, Yang W, Milyavsky M, Sanders AD, Gu S et al. Essential role for Ptpn11 in survival of hematopoietic stem and progenitor cells. *Blood* 2011; **117**: 4253–4261.
- 32 Zhu HH, Ji K, Alderson N, He Z, Li S, Liu W et al. Kit-Shp2-Kit signaling acts to maintain a functional hematopoietic stem and progenitor cell pool. *Blood* 2011; **117**: 5350–5361.
- 33 Tartaglia M, Niemeyer CM, Fragale A, Song X, Buechner J, Jung A et al. Somatic mutations in PTPN11 in juvenile myelomonocytic leukemia, myelodysplastic syndromes and acute myeloid leukemia. *Nat Genet* 2003; **34**: 148–150.
- 34 Loh ML, Vattikuti S, Schubert S, Reynolds MG, Carlson E, Lieuw KH et al. Mutations in PTPN11 implicate the SHP-2 phosphatase in leukemogenesis. *Blood* 2004; **103**: 2325–2331.
- 35 Bentières-Alj M, Paez JG, David FS, Keilhack H, Halmos B, Naoki K et al. Activating mutations of the noonan syndrome-associated SHP2/PTPN11 gene in human solid tumors and adult acute myelogenous leukemia. *Cancer Res* 2004; **64**: 8816–8820.
- 36 Tartaglia M, Martinelli S, Cazzaniga G, Cordeddu V, Iavarone I, Spinelli M et al. Genetic evidence for lineage-related and differentiation stage-related contribution of somatic PTPN11 mutations to leukemogenesis in childhood acute leukemia. *Blood* 2004; **104**: 307–313.
- 37 Hatlen MA, Arora K, Vacic V, Grabowska EA, Liao W, Riley-Gillis B et al. Integrative genetic analysis of mouse and human AML identifies cooperating disease alleles. *J Exp Med* 2015; **213**: 25–34.
- 38 Gu H, Griffin JD, Neel BG. Characterization of two SHP-2-associated binding proteins and potential substrates in hematopoietic cells. *J Biol Chem* 1997; **272**: 16421–16430.
- 39 Tauchi T, Feng GS, Shen R, Song HY, Donner D, Pawson T et al. SH2-containing phosphotyrosine phosphatase Syp is a target of p210bcr-abl tyrosine kinase. *J Biol Chem* 1994; **269**: 15381–15387.
- 40 Chen J, Yu W-M, Daino H, Broxmeyer HE, Druker BJ, Qu C-K. SHP-2 phosphatase is required for hematopoietic cell transformation by Bcr-Abl. *Blood* 2007; **109**: 778–785.
- 41 Zhang SQ, Yang W, Kontaridis MI, Bivona TG, Wen G, Araki T et al. Shp2 regulates SRC family kinase activity and Ras/Erk activation by controlling Csk recruitment. *Mol Cell* 2004; **13**: 341–355.
- 42 Yang W, Wang J, Moore DC, Liang H, Dooner M, Wu Q et al. Ptpn11 deletion in a novel progenitor causes metachondromatosis by inducing hedgehog signalling. *Nature* 2013; **499**: 491–495.
- 43 Walz C, Ahmed W, Lazarides K, Betancur M, Patel N, Hennighausen L et al. Essential role for Stat5a/b in myeloproliferative neoplasms induced by BCR-ABL1 and JAK2(V617F) in mice. *Blood* 2012; **119**: 3550–3560.
- 44 Million RP, Harakawa N, Roumiantsev S, Varticovski L, Van Etten RA. A direct binding site for Grb2 contributes to transformation and leukemogenesis by the Tel-Abl (ETV6-Abl) tyrosine kinase. *Mol Cell Biol* 2004; **24**: 4685–4695.
- 45 Neering SJ, Bushnell T, Sozer S, Ashton J, Rossi RM, Wang P-Y et al. Leukemia stem cells in a genetically defined murine model of blast-crisis CML. *Blood* 2007; **110**: 2578–2585.
- 46 Corfe Sa, Gray AP, Paige CJ. Generation and characterization of stromal cell independent IL-7 dependent B cell lines. *J Immunol Methods* 2007; **325**: 9–19.
- 47 Harlow E, Lane D. Using antibodies: a laboratory manual. CSHL press: Cold Spring Harbor, USA, 1999.
- 48 Trapnell C, Roberts A, Goff L, Pertea G, Kim D, Kelley DR et al. Differential gene and transcript expression analysis of RNA-seq experiments with TopHat and Cufflinks. *Nat Protoc* 2012; **7**: 562–578.
- 49 Leek JT, Johnson WE, Parker HS, Jaffe AE, Storey JD. The sva package for removing batch effects and other unwanted variation in high-throughput experiments. *Bioinformatics* 2012; **28**: 882–883.
- 50 Law CW, Chen Y, Shi W, Smyth GK. voom: Precision weights unlock linear model analysis tools for RNA-seq read counts. *Genome Biol* 2014; **15**: R29.
- 51 Huang DW, Sherman BT, Lempicki RA. Systematic and integrative analysis of large gene lists using DAVID bioinformatics resources. *Nat Protoc* 2009; **4**: 44–57.
- 52 Chen EY, Tan CM, Kou Y, Duan Q, Wang X, Meirelles GV et al. Enrichr: interactive and collaborative HTML5 gene list enrichment analysis tool. *BMC Bioinformatics* 2013; **14**: 128.
- 53 Gishizky ML, Witte ON. BCR/ABL enhances growth of multipotent progenitor cells but does not block their differentiation potential in vitro. *Curr Top Microbiol Immunol* 1992; **182**: 65–72.
- 54 Schmidt-Supprian M, Rajewsky K. Vagaries of conditional gene targeting. *Nat Immunol* 2007; **8**: 665–668.
- 55 Mahoney SJ, Dempsey JM, Blenis J. Cell signaling in protein synthesis. In: Hershey JWB (ed). Progress in molecular biology and translational science, Chapter 2. Elsevier Inc: Amsterdam, Netherlands, 2009, pp 53–107.
- 56 Albers C, Illert AL, Miething C, Leischner H, Thiede M, Peschel C et al. An RNAi-based system for loss-of-function analysis identifies Raf1 as a crucial mediator of BCR-ABL-driven leukemogenesis. *Blood* 2011; **118**: 2200–2210.
- 57 Packer LM, Rana S, Hayward R, O’Hare T, Eide Ca, Rebocho A et al. Nilotinib and MEK inhibitors induce synthetic lethality through paradoxical activation of RAF in drug-resistant chronic myeloid leukemia. *Cancer Cell* 2011; **20**: 715–727.
- 58 Mohi MG, Boulton C, Gu T-L, Sternberg DW, Neuberger D, Griffin JD et al. Combination of rapamycin and protein tyrosine kinase (PTK) inhibitors for the treatment of leukemias caused by oncogenic PTKs. *Proc Natl Acad Sci USA* 2004; **101**: 3130–3135.
- 59 Chen Y-NP, LaMarche MJ, Chan HM, Fekkes P, Garcia-Fortanet J, Acker MG et al. Allosteric inhibition of SHP2 phosphatase inhibits cancers driven by receptor tyrosine kinases. *Nature* 2016; **535**: 148–152.
- 60 Blake RA, Broome MA, Liu X, Wu J, Gishizky M, Sun L et al. SU6656, a selective Src family kinase inhibitor, used to probe growth factor signaling. *Mol Cell Biol* 2000; **20**: 9018–9027.
- 61 Ran H, Tsutsumi R, Araki T, Neel BG. Sticking it to cancer with molecular glue for SHP2. *Cancer Cell* 2016; **30**: 194–196.
- 62 Cortez D, Reuther G, Pendergast AM. The Bcr-Abl tyrosine kinase activates mitogenic signaling pathways and stimulates G1-to-S phase transition in hematopoietic cells. *Oncogene* 1997; **15**: 2333–2342.
- 63 Katsoulidis E, Sassano A, Majchrzak-Kita B, Carayol N, Yoon P, Jordan A et al. Suppression of interferon (IFN)-inducible genes and IFN-mediated functional responses in BCR-ABL-expressing cells. *J Biol Chem* 2008; **283**: 10793–10803.
- 64 Ding C, Yu W, Feng J, Luo J. Structure and function of Gab2 and its role in cancer (Review). *Mol Med Rep* 2015; **12**: 4007–4014.
- 65 Grandori C, Cowley SM, James LP, Eisenman RN. The Myc/Max/Mad network and the transcriptional control of cell behavior. *Annu Rev Cell Dev Biol* 2000; **16**: 653–699.
- 66 Sears R. Multiple Ras-dependent phosphorylation pathways regulate Myc protein stability. *Genes Dev* 2000; **14**: 2501–2514.
- 67 Diolaiti D, McFerrin L, Carroll PA, Eisenman RN. Functional interactions among members of the MAX and MLX transcriptional network during oncogenesis. *Biochim Biophys Acta* 2015; **1849**: 484–500.
- 68 Scherr M, Chaturvedi A, Battmer K, Dallmann I, Schultheis B, Ganser A et al. Enhanced sensitivity to inhibition of SHP2, STAT5, and Gab2 expression in chronic myeloid leukemia (CML). *Blood* 2006; **107**: 3279–3287.
- 69 Babovic S, Eaves CJ. Hierarchical organization of fetal and adult hematopoietic stem cells. *Exp Cell Res* 2014; **329**: 185–191.

- 70 Schmitz J, Weissenbach M, Haan S, Heinrich PC, Schaper F. SOCS3 exerts its inhibitory function on interleukin-6 signal transduction through the SHP2 recruitment site of gp130. *J Biol Chem* 2000; **275**: 12848–12856.
- 71 Nicholson SE, De Souza D, Fabri LJ, Corbin J, Willson TA, Zhang JG *et al*. Suppressor of cytokine signaling-3 preferentially binds to the SHP-2-binding site on the shared cytokine receptor subunit gp130. *Proc Natl Acad Sci USA* 2000; **97**: 6493–6498.
- 72 Geest CR, Coffey PJ. MAPK signaling pathways in the regulation of hematopoiesis. *J Leukoc Biol* 2009; **86**: 237–250.
- 73 Zhang W, Liu HT. MAPK signal pathways in the regulation of cell proliferation in mammalian cells. *Cell Res* 2002; **12**: 9–18.
- 74 Yang W, Klamann LD, Chen B, Araki T, Harada H, Thomas SM *et al*. An Shp2/SFK/Ras/Erk signaling pathway controls trophoblast stem cell survival. *Dev Cell* 2006; **10**: 317–327.
- 75 Bertotti A, Comoglio PM, Trusolino L. Beta4 integrin activates a Shp2-Src signaling pathway that sustains HGF-induced anchorage-independent growth. *J Cell Biol* 2006; **175**: 993–1003.
- 76 Hu Y, Liu Y, Pelletier S, Buchdunger E, Warmuth M, Fabbro D *et al*. Requirement of Src kinases Lyn, Hck and Fgr for BCR-ABL1-induced B-lymphoblastic leukemia but not chronic myeloid leukemia. *Nat Genet* 2004; **36**: 453–461.
- 77 Stewart RA, Sanda T, Widlund HR, Zhu S, Swanson KD, Hurley AD *et al*. Phosphatase-dependent and -independent functions of Shp2 in neural crest cells underlie LEOPARD syndrome pathogenesis. *Dev Cell* 2010; **18**: 750–762.
- 78 Araki T, Nawa H, Neel BG. Tyrosyl phosphorylation of Shp2 is required for normal ERK activation in response to some, but not all, growth factors. *J Biol Chem* 2003; **278**: 41677–41684.
- 79 Mohi MG, Williams IR, Dearolf CR, Chan G, Kutok JL, Cohen S *et al*. Prognostic, therapeutic, and mechanistic implications of a mouse model of leukemia evoked by Shp2 ( PTPN11 ) mutations. *Cancer Cell* 2005; **7**: 179–191.
- 80 Vander Heiden MG, Cantley LC, Thompson CB. Understanding the Warburg effect: the metabolic requirements of cell proliferation. *Science* 2009; **324**: 1029–1033.
- 81 Koppenol WH, Bounds PL, Dang CV. Otto Warburg's contributions to current concepts of cancer metabolism. *Nat Rev Cancer* 2011; **11**: 325–337.
- 82 Zeller KI, Zhao X, Lee CWH, Chiu KP, Yao F, Yustein JT *et al*. Global mapping of c-Myc binding sites and target gene networks in human B cells. *Proc Natl Acad Sci USA* 2006; **103**: 17834–17839.
- 83 Chang Y-M, Bai L, Liu S, Yang JC, Kung H-J, Evans CP. Src family kinase oncogenic potential and pathways in prostate cancer as revealed by AZD0530. *Oncogene* 2008; **27**: 6365–6375.
- 84 Ren Y, Chen Z, Chen L, Fang B, Win-Piazza H, Haura E *et al*. Critical role of Shp2 in tumor growth involving regulation of c-Myc. *Genes Cancer* 2010; **1**: 994–1007.
- 85 Bowman T, Broome MA, Sinibaldi D, Wharton W, Pledger WJ, Sedivy JM *et al*. Stat3-mediated Myc expression is required for Src transformation and PDGF-induced mitogenesis. *Proc Natl Acad Sci USA* 2001; **98**: 7319–7324.
- 86 Hurlin PJ, Quéva C, Koskinen PJ, Steingrímsson E, Ayer DE, Copeland NG *et al*. Mad3 and Mad4: novel Max-interacting transcriptional repressors that suppress c-myc dependent transformation and are expressed during neural and epidermal differentiation. *EMBO J* 1995; **14**: 5646–5659.
- 87 Zhu J, Blenis J, Yuan J. Activation of PI3K/Akt and MAPK pathways regulates Myc-mediated transcription by phosphorylating and promoting the degradation of Mad1. *Proc Natl Acad Sci USA* 2008; **105**: 6584–6589.
- 88 Yang W, Ramachandran A, You S, Jeong H, Morley S, Mulone MD *et al*. Integration of proteomic and transcriptomic profiles identifies a novel PDGF-MYC network in human smooth muscle cells. *Cell Commun Signal* 2014; **12**: 44.
- 89 Bisikirska BC, Adam SJ, Alvarez MJ, Rajbhandari P, Cox R, Lefebvre C *et al*. STK38 is a critical upstream regulator of MYC's oncogenic activity in human B-cell lymphoma. *Oncogene* 2013; **32**: 5283–5291.
- 90 Moodley D, Yoshida H, Mostafavi S, Asinovski N, Ortiz-Lopez A, Symanowicz P *et al*. Network pharmacology of JAK inhibitors. *Proc Natl Acad Sci USA* 2016; **113**: 9852–9857.
- 91 Bradley G. Gene Expression Omnibus GSE60880. <https://www.ncbi.nlm.nih.gov/geo/query/acc.cgi?acc=GSE60880>; <https://www.ncbi.nlm.nih.gov/geo/query/acc.cgi?acc=GSE60880> (accessed 13 January 2017).
- 92 Wassmann B, Scheuring U, Pfeifer H, Binckebanck A, Käbisch A, Lübbert M *et al*. Efficacy and safety of imatinib mesylate (Glivec) in combination with interferon-alpha (IFN-alpha) in Philadelphia chromosome-positive acute lymphoblastic leukemia (Ph+ALL). *Leuk Off J Leuk Soc Am Leuk Res Fund, UK* 2003; **17**: 1919–1924.
- 93 Visani G, Martinelli G, Piccaluga P, Tosi P, Amabile M, Pastano R *et al*. Alpha-interferon improves survival and remission duration in P-190BCR-ABL positive adult acute lymphoblastic leukemia. *Leukemia* 2000; **14**: 22–27.
- 94 Thomas NS, Pizzey AR, Tiwari S, Williams CD, Yang J. p130, p107, and pRb are differentially regulated in proliferating cells and during cell cycle arrest by alpha-interferon. *J Biol Chem* 1998; **273**: 23659–23667.
- 95 Muromoto R, Ishida M, Sugiyama K, Sekine Y, Oritani K, Shimoda K *et al*. Sumoylation of Daxx regulates IFN-induced growth suppression of B lymphocytes and the hormone receptor-mediated transactivation. *J Immunol* 2006; **177**: 1160–1170.
- 96 Subramaniam PS, Cruz PE, Hobeika AC, Johnson HM. Type I interferon induction of the Cdk-inhibitor p21WAF1 is accompanied by ordered G1 arrest, differentiation and apoptosis of the Daudi B-cell line. *Oncogene* 1998; **16**: 1885–1890.
- 97 Mackay F, Schneider P, Rennert P, Browning J. BAFF AND APRIL: a tutorial on B cell survival. *Annu Rev Immunol* 2003; **21**: 231–264.
- 98 Ramírez J, Lukin K, Hagman J. From hematopoietic progenitors to B cells: mechanisms of lineage restriction and commitment. *Curr Opin Immunol* 2010; **22**: 177–184.
- 99 Nutt SL, Kee BL. The transcriptional regulation of B cell lineage commitment. *Immunity* 2007; **26**: 715–725.

Supplementary Information accompanies this paper on the Leukemia website (<http://www.nature.com/leu>)