

## REVIEW ARTICLE

## Assessment of bone turnover and bone quality in type 2 diabetic bone disease: current concepts and future directions

Mishaela R Rubin<sup>1</sup> and Janina M Patsch<sup>2</sup>

Substantial evidence exists that in addition to the well-known complications of diabetes, increased fracture risk is an important morbidity. This risk is probably due to altered bone properties in diabetes. Circulating biochemical markers of bone turnover have been found to be decreased in type 2 diabetes (T2D) and may be predictive of fractures independently of bone mineral density (BMD). Serum sclerostin levels have been found to be increased in T2D and appear to be predictive of fracture risk independent of BMD. Bone imaging technologies, including trabecular bone score (TBS) and quantitative CT testing have revealed differences in diabetic bone as compared to non-diabetic individuals. Specifically, high resolution peripheral quantitative CT (HRpQCT) imaging has demonstrated increased cortical porosity in diabetic postmenopausal women. Other factors such as bone marrow fat saturation and advanced glycation endproduct (AGE) accumulation might also relate to bone cell function and fracture risk in diabetes. These data have increased our understanding of how T2D adversely impacts both bone metabolism and fracture risk.

*Bone Research* (2016) 4, 16001; doi:10.1038/boneres.2016.1; published online: 22 March 2016

## INTRODUCTION

Type 2 diabetes mellitus (T2D) is an exceedingly common chronic metabolic disorder that has an enormous impact on public health. Currently, diabetes affects over 387 million adults worldwide and is projected to reach 592 million by 2035.<sup>1</sup> Until recently, the list of target organs affected by T2D did not include the skeleton. Yet it is now well-established that T2D is an independent risk factor for fractures, which is not attributable to increased body mass index (BMI) nor other classical osteoporosis risk factors.<sup>2</sup> New data from epidemiologic and pathophysiologic reports, as well as from studies employing state-of-the-art investigational tools, have recently increased our understanding of how T2D adversely impacts both bone metabolism and fracture risk.

Epidemiological data indicate that older adults with T2D have a higher risk of fractures, with a 50%–80% increased extremity fracture risk.<sup>3–4</sup> A meta-analysis of 12 studies reported a relative risk of 1.7 (95% confidence interval:

1.3–2.2) for hip fracture in both men and women with T2D.<sup>5</sup> The risk of all clinical fractures was also increased, with a summary relative risk of 1.2 (95% confidence interval: 1.0–1.5).<sup>5</sup> Other studies have reported similar results,<sup>6</sup> with a direct association between the duration of diabetes and increased fracture risk.<sup>7</sup> Given this increased fracture risk, it is perhaps surprising that bone mineral density (BMD) is generally higher in those with T2D compared with those without.<sup>8</sup> In a meta-analysis, Vestergaard et al<sup>8</sup> reported an increased Z-score of +0.41 at the spine and +0.27 at the hip associated with T2D. In addition, a large prospective study has shown that patients with T2D have a higher fracture risk for a given femoral neck BMD T-score.<sup>9</sup> Although dual-energy x-ray absorptiometry (DXA) is the gold standard method for the quantitative assessment of BMD, providing areal BMD of the hip, spine, radius, and total body (including body composition), it has limitations in patients with complex metabolic bone diseases such as chronic kidney disease or diabetic bone disease. It has

<sup>1</sup>Metabolic Bone Disease Unit, Department of Medicine, Columbia University College of P&S, New York, USA and <sup>2</sup>Division of General Radiology and Pediatric Radiology, Department of Biomedical Imaging and Image-Guided Therapy, Medical University of Vienna, Vienna, Austria  
Correspondence: Janina M Patsch (janina.patsch@meduniwien.ac.at)

Received: 27 November 2015; Accepted: 21 December 2015

therefore been suggested that fragility fractures in T2D may result from diabetes-related alterations in skeletal properties not captured by DXA.<sup>2</sup> Similarly, patients with T2D have a higher fracture risk for a given FRAX probability (<https://www.shef.ac.uk/FRAX/>).<sup>9</sup> The FRAX algorithm provides the 10-year probability of major osteoporotic fractures per individual tested. A recent study has demonstrated that diabetes mellitus does not modify the effects of risk factors incorporated into FRAX.<sup>10</sup> Nevertheless, the study has shown that diabetes has stronger effects on hip fracture risk in younger than older individuals which warrants special consideration for diabetic fracture prevention in clinical practise.

The paradox of higher BMD in association with increased fractures might be attributed to more frequent trauma, as diabetes is associated with an increased frequency of falls.<sup>11</sup> However, in studies of diabetes and fracture that controlled for fall frequency, diabetes still remained independently associated with increased fracture risk.<sup>3–4</sup> Thiazolidinediones use might also be considered as an explanation, since it has been proposed that these agents divert mesenchymal stem cells from the osteogenic to the adipocytic lineage and are associated with bone loss and increased fracture risk, particularly in women.<sup>12</sup> However, thiazolidinedione use cannot fully account for the increased risk of fracture observed with diabetes, since most studies included substantial observation time prior to the widespread use of these medications. Rather, it appears that other bone properties, which are undetectable by DXA, are probably contributing to fracture risk in diabetes.

### PTH AND BIOCHEMICAL MARKERS OF BONE TURNOVER IN T2D

Decreased bone remodeling in T2D has been demonstrated by a number of lines of evidence. Levels of parathyroid hormone (PTH) tend to be 20%–50% lower in T2D subjects than in controls, even in the setting of reduced

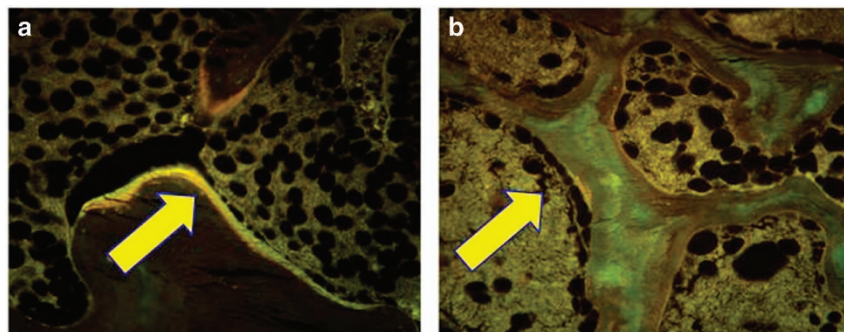
eGFR, suggesting a state of reduced PTH secretion in T2D.<sup>13–15</sup> Circulating biochemical markers of bone formation, including P1NP, osteocalcin (OCN)<sup>14–15</sup> and bone specific alkaline phosphatase<sup>16</sup> have been found to be decreased in T2D. These decreases in formation measures are associated with reductions in the bone resorption marker serum CTx.<sup>13–16</sup> The decrease in bone remodeling in T2D appears to be predictive of fracture risk regardless of BMD. In a study of 255 T2D women and 240 controls, T2D women with the combination of the lowest PTH and OCN levels had nearly a fivefold increased risk of vertebral fractures independent of lumbar spine BMD.<sup>15</sup>

### DYNAMIC HISTOMORPHOMETRY IN T2D

Lower bone formation in T2D on biopsy was reported in one study, but the numbers were very small ( $n = 6$  T2D patients; 2 female), and the results were confounded by selecting for low BMD and a problematical control group.<sup>17</sup> In a more recent pilot study, low-bone formation was observed in six T2D postmenopausal women and six postmenopausal age-matched non-diabetic controls, where tetracycline double-labeled iliac crest bone biopsies showed virtually no uptake of label in diabetic subjects (Figure 1), with reduced mineralizing surface, osteoid surface, and osteoblast surface.<sup>18</sup> Interestingly, corresponding reductions in bone resorption indices were not present, perhaps suggesting a disproportionate reduction in bone formation in diabetes as compared with bone resorption.

### OTHER BONE MARKERS IN T2D

Insulin-like growth factor (IGF)-1, an anabolic factor which stimulates osteoblast proliferation, has been inversely associated with the risk and number of vertebral fractures in diabetic women independent of BMD.<sup>14–19</sup> Another marker which might reflect bone formation is that of circulating osteogenic precursor cells,<sup>20</sup> which have been reported to be decreased in patients with T2D (Figure 2).



**Figure 1.** Histomorphometric changes in bone formation. (a and b) Tetracycline double-labeled bone biopsies in a 57-year-old Caucasian female control (a) and a 58-year-old T2D Caucasian woman (b) bone formation is decreased in T2D with reduced mineralizing surface. The arrows highlight tetracycline uptake in the control subject and the absence of uptake in the diabetic subject. Adapted with permission from ref. 18.

Circulating osteogenic precursor cells can be detected in the peripheral blood by flow cytometry using antibodies specific for the osteoblast matrix protein OCN.<sup>21</sup> Peripheral blood mononuclear cells that were positive for OCN were lower in postmenopausal women with T2D as compared with non-diabetic controls.<sup>18</sup> Moreover, within the decreased pool of overall OCN+ cells, the T2D subjects had an increased subpopulation of immature OCN+ cells, that is, cells that also had early markers CD146 and CD34, subpopulations which diminish when osteoblasts mature.<sup>20</sup> An additional novel bone marker in T2D may be sphingosine 1-phosphate (S1P), a lipid mediator which increases osteoclastogenesis by increasing RANKL.<sup>22</sup> S1P was found to be increased in T2D women ( $n=482$ ) as compared with controls and was associated with vertebral fractures. Interestingly, this marker suggests an elevation in bone resorption in T2D, in contrast to the reports of decreased s-CTx levels.<sup>13–16</sup> It is possible that s-CTx underestimates the level of bone resorption in diabetes because enzymatic cross-linking of bone collagen by lysyl oxidase is reduced in diabetes,<sup>23–24</sup> such that less cross-linked telopeptides might be released in diabetes during bone resorption.

### SCLEROSTIN IN T2D

Sclerostin, an osteocyte product, is a negative regulator of bone formation which competes with the anabolic Wnt  $\beta$ -catenin pathway by binding to LRP5 or 6.<sup>25</sup> In healthy adults, sclerostin levels are increased by factors including age, BMI, inactivity, bone mineral content, and possibly fractures.<sup>25</sup> It was first reported in 2012 that sclerostin levels were higher in 74 T2D women and men versus 50 non-diabetic controls and that higher levels correlated with age, male gender and BMD.<sup>26</sup> This observation was corroborated by another report in which sclerostin levels were found to be twofold higher in T2D than in controls or T1D, after adjusting for age and BMI.<sup>27</sup> A correlation between Wnt disruption and decreased osteoblast activity was further observed in 40 T2D postmenopausal women who, as compared with controls, had decreased  $\beta$ -catenin levels which correlated with lower BAP.<sup>16</sup> In the largest diabetes sclerostin study, higher sclerostin levels in 321 men and women with T2D were associated with an increased risk of vertebral fractures independent of lumbar spine BMD.<sup>28</sup> Interestingly, diabetic postmenopausal women with fragility fractures were shown to demonstrate significantly higher serum sclerostin levels than diabetic postmenopausal women without fragility fractures.<sup>29</sup> While BMI, renal function, glycemic control, and diabetes medication (including insulin) were comparable between women with and without fragility fractures, diabetes duration was significantly longer in those that had sustained fractures. It

could be posited from these data that the higher sclerostin levels in T2D reflect the presence of more deeply embedded osteocytes in older bone that has accumulated more microscopic damage. Thus prolonged low-bone turnover in diabetes, as a result of Wnt inhibition, may lead to defective microdamage repair and increased bone microcrack accumulation in a manner reminiscent of high-dose bisphosphonate therapy,<sup>30</sup> thus contributing to greater bone fragility. Stressing the interplay between bone health and vascular health and considering diabetic fractures to be true diabetic complications, it is also noteworthy that in diabetics higher serum sclerostin levels appear to be associated with higher amounts of vascular calcifications.<sup>31</sup>

### AGES AND BONE REMODELING

Decreased bone formation might occur in part because of increased advanced glycation endproducts (AGEs) in bone collagen. AGEs are a diverse group of compounds that are generated through the non-enzymatic glycation or glycoxidation of proteins, lipids, and nucleic acids<sup>32</sup> with the best-studied being carboxymethyl-lysine and pentosidine.<sup>33–36</sup> These compounds are markedly increased in patients with diabetes,<sup>35</sup> forming non-enzymatic cross-links within and across collagen fibers.<sup>37–38</sup> AGEs interfere with normal osteoblast function<sup>39</sup> and attachment to the collagen matrix,<sup>40</sup> as well as impair osteoblast development.<sup>41–42</sup> AGEs also decrease bone resorption by altering the structural integrity of bone matrix proteins and inhibiting the osteoclastic differentiation process.<sup>43</sup> This might have long-lasting skeletal effects that are similar to the “hyperglycemic metabolic memory” that has been described with AGE accumulation in other tissues.<sup>44</sup> In the Diabetes Control and Complications Trial (DCCT), accumulation of AGEs in skin collagen of type 1 diabetes patients predicted complications decades later, regardless of subsequent improvements in glycemic control.<sup>45</sup> In the bone matrix, accumulation of AGEs leads to more biomechanically brittle bone that has lost its toughness and is less able to deform before fracturing.<sup>30</sup> Urinary pentosidine, the best-studied AGE, was associated with a 42% increase in clinical fracture incidence in T2D.<sup>38</sup> Although the relationship between *in vivo* bone and circulating levels of AGEs has not been fully elucidated, AGEs are likely related to both low-bone formation and increased bone fragility in T2D.

### ASSESSMENT OF FRACTURE RISK IN T2D: FROM CURRENT CLINICAL PRACTICE TO NOVEL IMAGING BIOMARKERS

Irrespective of diabetes history, in clinical practice fracture risk is routinely assessed by measuring BMD and by

determining the presence of clinical risk factors including age, sex, BMI, smoking and drinking habits, history of fragility fractures, parental fractures, rheumatoid arthritis, and known secondary osteoporosis. These factors are part of the aforementioned, questionnaire-based fracture risk assessment tool (FRAX).<sup>46</sup>

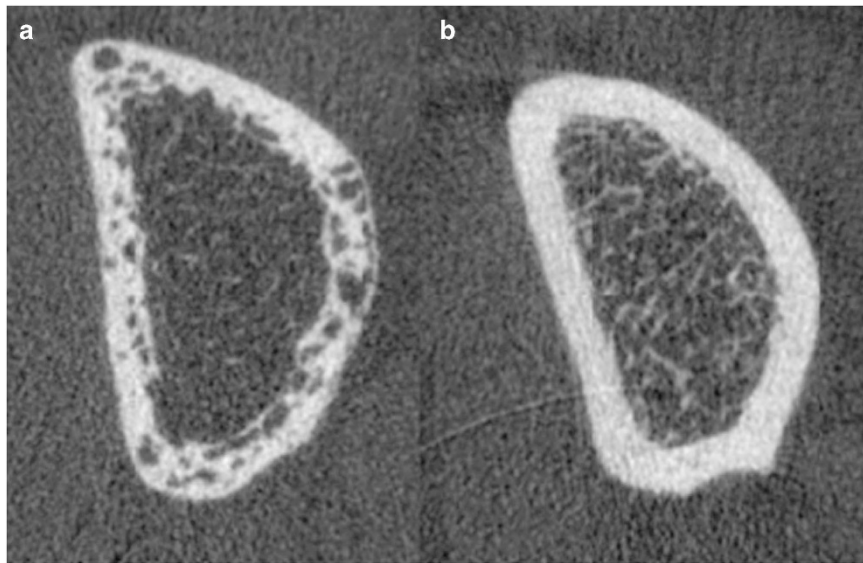
BMD can be measured by DXA and quantitative computed tomography (QCT) at central and peripheral sites.<sup>47</sup> Although DXA can predict fracture risk in diabetic patients to a certain extent, experts have suggested the introduction of a “diabetic correction factor” for T-scores because given T-scores were shown to be associated with a higher risk of fracture in older adults with T2D than in those without DM.<sup>48</sup> Similar concepts have been suggested for FRAX scores in elderly subjects with T2D.<sup>48</sup> The use of trabecular bone score (TBS) has been also suggested to improve the diagnostic performance of lumbar spine DXA in patients with T2D: from an image processing perspective, TBS is based on two-dimensional texture-analysis of DXA images. Applying methodologies originally used in pattern recognition (for example, in geostatistics characterizing landscapes from aerial views), textural variations are quantified between neighboring gray-scale pixels.<sup>49</sup> In clinical practice, operators and clinicians are only presented with the end-result of these calculations: A single (TBS) index which is higher in images with fewer inter-pixel variations (that is, indirect measure of better spinal bone microarchitecture) and lower in images with higher inter-pixel variations (that is, indirect measure of worse spinal bone microarchitecture).<sup>50</sup> While BMD is typically normal to higher in subjects with diabetes, TBS appears to be lower in diabetics than in non-diabetic subjects.<sup>51</sup> In the same publication, Leslie *et al.*<sup>51</sup> also showed that lumbar spine TBS can predict osteoporotic fractures irrespective of the presence or absence of diabetes. In addition, TBS has been shown to be positively associated with good glycemic control.<sup>52–53</sup> While these results are of major clinical interest and relevance, it remains to be stressed that—from an imaging standpoint—TBS only provides an indirect measure of bone microarchitecture at low resolution and reduced image quality.

While DXA is a projectional technique, central QCT provides volumetric data on BMD and bone geometry of the spine and the proximal femur. For QCT, a clinical multidetector-CT scanner, a calibration phantom mat, and dedicated software are needed.<sup>54</sup> Alterations in volumetric hip BMD—as determined by QCT in diabetic versus non-diabetic subjects—have been confirmed by two independent studies.<sup>29,53–55</sup> One of these studies also concluded that patients with T2D appear to have little benefit from elevated BMD due to unchanged load-to-strength ratios.<sup>55</sup>

## HIGH-RESOLUTION PERIPHERAL QCT

Within the last two decades, dedicated peripheral QCT scanners have been developed to capture volumetric BMD of peripheral sites (that is, the extremities) at varying resolution. In addition to BMD and geometric measures, high-resolution peripheral QCT (HR-pQCT) provides quantitative access to bone microarchitecture, an important surrogate of bone quality and bone strength.<sup>56–57</sup> Many micro-architectural parameters quantifiable by HR-pQCT refer to those initially coined by static histomorphometry (for example, trabecular number, trabecular thickness).<sup>58</sup> In the first generation HR-pQCT scanner, which has a spatial resolution of ~80 μm, only two microstructural parameters—trabecular number and trabecular heterogeneity—are directly measured by three-dimensional distance transformations.<sup>59</sup> Trabecular separation and trabecular thickness are derived from trabecular BMD and trabecular number, which are determined by threshold-based segmentation and a ridge-counting technique.<sup>60</sup> Recently, a second generation scanner with shorter scan time and higher spatial resolution has been introduced. Using this second generation scanner, all micro-architectural indices can be calculated directly.<sup>61</sup> It is noteworthy that so far, all published HR-pQCT data on bone microarchitecture in T2D have been acquired with scanners of the first generation.<sup>62–65</sup>

First evidence of associations between impaired cortical strength and T2D originally came from a pQCT study in a cohort of elderly men.<sup>66</sup> The first HR-pQCT study investigating bone microarchitecture in T2D then raised the topic of high cortical porosity as a potential predominant structural phenotype:<sup>62</sup> while trabecular BMD and trabecular thickness were greater in postmenopausal women with T2D than in those without, high cortical porosity was observed (Figure 2). Based on the unstratified enrollment of diabetic women with and without fractures, this study led to the formation of a key hypothesis for subsequent research: could cortical porosity serve as a discriminative feature between diabetic women with and without fragility fractures? In line with this hypothesis, Shu *et al.*,<sup>63</sup> also reported no differences in peripheral bone microarchitecture between postmenopausal women with and without T2D (without history of fragility fractures). Specifically enrolling postmenopausal diabetic women with and without fragility fractures and comparing them with non-diabetic controls with and without fractures, the importance of high cortical porosity with relatively maintained trabecular properties could be confirmed.<sup>64</sup> Interestingly, diabetic women with and without fractures were comparable with respect to clinical characteristics: age, BMI, glycemic control, 25(OH)-vitamin D, kidney function, and PTH levels were similar. The only significant clinical difference was the duration of diabetes: diabetic women with



**Figure 2.** Cortical porosity in diabetic bone disease with fractures. High-resolution peripheral quantitative computed tomography (HR-pQCT) of the distal radius in type 2 diabetic women with (a) and without (b) fragility fractures.<sup>64</sup> Image courtesy: Thomas M. Link, Department of Radiology and Biomedical Imaging, The University of California, San Francisco.

fractures had been suffering from diabetes significantly longer than diabetic women without fractures (13 years versus 8 years). Using finite element analyses, deficits in stiffness, failure load, and cortical load fraction could be detected and attributed to cortical porosity.<sup>64</sup> Considering the high prevalence of insulin resistance and T2D in the African-American population, a forth HR-pQCT study specifically focused on the assessment of bone microarchitecture in postmenopausal African-American women: In line with above mentioned studies of mixed racial recruitment, Yu *et al.*<sup>65</sup> found T2D and unfavorable cortical bone microarchitecture to be similarly associated in African-American women.

### MAGNETIC RESONANCE IMAGING

Magnetic resonance imaging (MRI) provides an alternative method of depicting and quantifying bone geometry and bone microarchitecture.<sup>47</sup> High-resolution MRI has been used to study bone microarchitecture in postmenopausal and age-related osteoporosis,<sup>67–69</sup> secondary osteoporosis,<sup>70</sup> chronic kidney disease,<sup>71</sup> and with respect to treatment effects of anti-osteoporotic drugs.<sup>72–73</sup> Regarding diabetic bone disease, there is only a limited number of publications using MRI. Specifically, a Canadian researcher reported poorer bone microarchitecture expressed as greater trabecular heterogeneity in subjects with diabetes mellitus than in healthy controls.<sup>74</sup> Although compared with HR-pQCT, MRI has certain disadvantages in studying bone microarchitecture (for example, lower

resolution, higher technical complexity in acquisition and postprocessing of image data, no option of measuring BMD, and fewer reference data), the method does hold significant potential for bone research. Specifically, MRI offers the option of imaging the skeleton beyond its geometry and structure. Using techniques such as magnetic resonance-perfusion and MR-spectroscopy, novel imaging surrogates of bone strength (for example, skeletal blood flow and regional biochemical composition of bone marrow) have been introduced.<sup>75–76</sup> Recent MR-imaging data have demonstrated that altered bone marrow fat composition is linked with T2D and fragility fractures in postmenopausal women.<sup>77</sup> Even after adjustment for age, race, and local (that is, spinal) BMD, lower unsaturated bone marrow fat and higher saturated bone marrow fat as determined by MR-spectroscopy were significantly associated with T2D. Of interest, postmenopausal diabetic women with a history of fragility fractures displayed the lowest unsaturation and the highest saturation levels. The relevance of these findings is supported by epidemiologic data linking low dietary intake of n-3 poly-unsaturated fatty acids (PUFA) with low BMD<sup>78–80</sup> and the risk of hip fractures.<sup>81</sup> Preclinical data support a potential osteoprotective role of PUFA.<sup>82–85</sup> Vice versa, saturated dietary fatty acids appear to be linked with osteoporotic fractures.<sup>86</sup> With poor glycemic control also leading to accelerated aging of adipocytes and thus adipocyte dysfunction,<sup>87–90</sup> changes in bone marrow fat composition of subjects with T2D are likely to result from a multitude of interacting etiologic factors. It is conceivable that bone

marrow adiposity might reflect a shift in stem cell lineage away from osteoblastogenesis toward adipogenesis.<sup>91</sup> In the AGEs-Reykjavik cohort (115 men and 134 women; mean age 79; 7% with diabetes), sclerostin levels were positively associated with marrow fat by MRI in men independent of BMD.<sup>91</sup> This positive relationship could be explained by a shift in precursor stem cell lineage away from osteoblastogenesis, as reflected by higher sclerostin levels, toward adipogenesis, as reflected by higher bone marrow fat.<sup>91</sup>

### **OBESITY AS A POTENTIAL CONFOUNDER**

Confounding greater understanding of the mechanisms responsible for increased skeletal fragility in T2D is the frequent concurrence of obesity, which has also recently been shown to be a risk factor for fractures.<sup>92–94</sup> Mechanisms proposed to be responsible for increased skeletal fragility in both obesity and T2D include structural, metabolic, material, dynamic, and imaging abnormalities. However, the relative contribution of each condition separately and their combined effects on skeletal fragility remain unclear. The concurrence of obesity and T2D in most individuals has undermined attempts to gain pathogenetic clarity. For example, obese women have been reported to have trabecular and cortical micro-architectural abnormalities, but their diabetic status was not considered.<sup>95</sup> Moreover, obese diabetics have lower biochemical and quantitative histomorphometric indices of bone formation,<sup>17–96</sup> elevated circulating levels of the osteocyte product sclerostin,<sup>27</sup> increased adipocyte markers,<sup>97</sup> and abnormal bone marrow fat composition,<sup>77</sup> however, these abnormalities are also found in obese individuals without T2D.<sup>98–101</sup> Whether T2D has negative effects on specific skeletal parameters that are distinct from the adverse skeletal effects of obesity remains to be clarified.

### **A CONTINUING QUEST FOR NOVEL NON-INVASIVE BIOMARKERS REFLECTING HIGH FRACTURE RISK IN PATIENTS WITH T2D**

Minimal invasive testing of bone strength (“micro-indentation”) is nowadays possible in the setting of clinical research. After local anesthesia at the mid-shaft point of the anterior tibia, a handheld device is inserted through soft tissue and periosteum, to touch the bone surface. Using triggered, pre-defined impacts small bony indentations (that is, local superficial microfractures) are created (< 350 μm). The deeper the mean indentation distance, the weaker bone material properties are at the testing site of an individual subject.<sup>102–103</sup> Using the most recent generation *in vivo* testing device, Farr *et al.*<sup>104</sup> have shown that postmenopausal diabetic women had significantly

lower bone material strength than non-diabetic controls. Poor bone material strength correlated with poor long-term glycemic control over the past 10 years.<sup>104</sup> *In vivo* micro-indentation has been used to quantify reduced bone strength in patients with osteoporotic hip fractures and atypical femoral fractures.<sup>105–106</sup> To the best of our knowledge, *in vivo* micro-indentation data are still lacking for patients with T1D, men, and patients with fragility fractures.

Given significant advances in knowledge within the last decade, dedicated research in diabetic bone disease with and without fractures and development of novel patient-oriented biomarkers continue to be warranted.

### **SUMMARY AND CONCLUSION**

There is growing evidence that the skeleton is an important target organ for complications of T2D. Many large prospective studies have established that T2D is associated with an increased risk of fractures. Yet it remains unknown how to identify which patients with T2D are at increased risk because it is uncertain why bone fragility is increased when aBMD is normal. Available evidence suggests that compromised bone quality, not deficits in aBMD, is the underlying basis for fragility fractures in patients with T2D. Clues supporting this hypothesis include alterations in bone remodeling, increased cortical porosity, and decreased bone material properties. More information is needed about the pathogenesis of these abnormalities and their relationship to the increased fracture risk observed in T2D. Whether a circulating marker, such as an AGE or sclerostin, would be predictive of alterations in bone material properties or cortical porosity remains to be determined. Further investigation of skeletal parameters would shed light on the issue of greater bone fragility in T2D and potentially offset serious challenges in this population as they age.

### **References**

- 1 IDF Diabetes Atlas 2014. Available at <http://www.idf.org/diabetesatlas/update-2014>.
- 2 Leslie WD, Rubin MR, Schwartz AV *et al.* Type 2 diabetes and bone. *J Bone Miner Res* 2012; **27**: 2231–2237.
- 3 Schwartz AV, Sellmeyer DE, Ensrud KE *et al.* Older women with diabetes have an increased risk of fracture: a prospective study. *J Clin Endocrinol Metab* 2001; **86**: 32–38.
- 4 Bonds DE, Larson JC, Schwartz AV *et al.* Risk of fracture in women with type 2 diabetes: the Women's Health Initiative Observational Study. *J Clin Endocrinol Metab* 2006; **91**: 3404–3410.
- 5 Janghorbani M, Van Dam RM, Willett WC *et al.* Systematic review of type 1 and type 2 diabetes mellitus and risk of fracture. *Am J Epidemiol* 2007; **166**: 495–505.
- 6 Leslie WD, Lix LM, Prior HJ *et al.* Biphasic fracture risk in diabetes: a population-based study. *Bone* 2007; **40**: 1595–1601.

- 7 de Liefde II, van der Klift M, de Laet CE *et al.* Bone mineral density and fracture risk in type-2 diabetes mellitus: the Rotterdam study. *Osteoporos Int* 2005; **16**: 1713–1720.
- 8 Vestergaard P. Discrepancies in bone mineral density and fracture risk in patients with type 1 and type 2 diabetes—a meta-analysis. *Osteoporos Int* 2007; **18**: 427–444.
- 9 Giangregorio LM, Leslie WD, Lix LM *et al.* FRAX underestimates fracture risk in patients with diabetes. *J Bone Miner Res* 2012; **27**: 301–308.
- 10 Leslie WD, Morin SN, Lix LM *et al.* Does diabetes modify the effect of FRAX risk factors for predicting major osteoporotic and hip fracture? *Osteoporos Int* 2014; **25**: 2817–2824.
- 11 Schwartz AV, Hillier TA, Sellmeyer DE *et al.* Older women with diabetes have a higher risk of falls: a prospective study. *Diabetes Care* 2002; **25**: 1749–1754.
- 12 Loke YK, Singh S, Furberg CD. Long-term use of thiazolidinediones and fractures in type 2 diabetes: a meta-analysis. *CMAJ* 2009; **180**: 32–39.
- 13 Dobnig H, Pischwanger-Solkner JC, Roth M *et al.* Type 2 diabetes mellitus in nursing home patients: effects on bone turnover, bone mass, and fracture risk. *J Clin Endocrinol Metab* 2006; **91**: 3355–3363.
- 14 Ardawi MS, Akhbar DH, Alshaikh A *et al.* Increased serum sclerostin and decreased serum IGF-1 are associated with vertebral fractures among postmenopausal women with type-2 diabetes. *Bone* 2013; **56**: 355–362.
- 15 Yamamoto M, Yamaguchi T, Nawata K *et al.* Decreased PTH levels accompanied by low-bone formation are associated with vertebral fractures in postmenopausal women with type 2 diabetes. *J Clin Endocrinol Metab* 2012; **97**: 1277–1284.
- 16 Gaudio A, Privitera F, Battaglia K *et al.* Sclerostin levels associated with inhibition of the WNT/beta-catenin signaling and reduced bone turnover in type 2 diabetes mellitus. *J Clin Endocrinol Metab* 2012; **97**: 3744–3750.
- 17 Krakauer JC, McKenna MJ, Buderer NF *et al.* Bone loss and bone turnover in diabetes. *Diabetes* 1995; **44**: 775–782.
- 18 Manavalan JS, Cremers S, Dempster DW *et al.* Circulating osteogenic precursor cells in type 2 diabetes mellitus. *J Clin Endocrinol Metab* 2012; **97**: 3240–3250.
- 19 Kanazawa I, Yamaguchi T, Sugimoto T. Serum insulin-like growth factor-I is a marker for assessing the severity of vertebral fractures in postmenopausal women with type 2 diabetes mellitus. *Osteoporos Int* 2011; **22**: 1191–1198.
- 20 Eghbali-Fatourechi GZ, Modder UI, Charatcharoenwitthaya N *et al.* Characterization of circulating osteoblast lineage cells in humans. *Bone* 2007; **40**: 1370–1377.
- 21 Rubin MR, Manavalan JS, Dempster DW *et al.* Parathyroid hormone stimulates circulating osteogenic cells in hypoparathyroidism. *J Clin Endocrinol Metab* 2011; **96**: 176–186.
- 22 Ardawi M, Akbar D, Rouzi A *et al.* Elevated sphingosine 1-phosphate levels are associated with vertebral fractures in patients with type 2 diabetes mellitus. *J Bone Miner Res* 2014; **29** Suppl 1. Available at <http://www.asbmr.org/education/AbstractDetail?aid=51ef5a65-8072-4369-b2b7-c1381053da59>. 11 December 2014.
- 23 Saito M, Fujii K, Mori Y *et al.* Role of collagen enzymatic and glycation induced cross-links as a determinant of bone quality in spontaneously diabetic WBN/Kob rats. *Osteoporos Int* 2006; **17**: 1514–1523.
- 24 Khosravi R, Sodek KL, Faibish M *et al.* Collagen advanced glycation inhibits its discoidin domain receptor 2 (DDR2)-mediated induction of lysyl oxidase in osteoblasts. *Bone* 2014; **58**: 33–41.
- 25 Canalis E. Wnt signalling in osteoporosis: mechanisms and novel therapeutic approaches. *Nat Rev Endocrinol* 2013; **9**: 575–583.
- 26 Garcia-Martin A, Rozas-Moreno P, Reyes-Garcia R *et al.* Circulating levels of sclerostin are increased in patients with type 2 diabetes mellitus. *J Clin Endocrinol Metab* 2012; **97**: 234–241.
- 27 Gennari L, Merlotti D, Valenti R *et al.* Circulating sclerostin levels and bone turnover in type 1 and type 2 diabetes. *J Clin Endocrinol Metab* 2012; **97**: 1737–1744.
- 28 Yamamoto M, Yamauchi M, Sugimoto T. Elevated sclerostin levels are associated with vertebral fractures in patients with type 2 diabetes mellitus. *J Clin Endocrinol Metab* 2013; **98**: 4030–4037.
- 29 Heilmeyer U, Carpenter DR, Patsch JM *et al.* Volumetric femoral BMD, bone geometry, and serum sclerostin levels differ between type 2 diabetic postmenopausal women with and without fragility fractures. *Osteoporos Int* 2015; **26**: 1283–1293.
- 30 Tang SY, Allen MR, Phipps R *et al.* Changes in non-enzymatic glycation and its association with altered mechanical properties following 1-year treatment with risedronate or alendronate. *Osteoporos Int* 2009; **20**: 887–894.
- 31 Morales-Santana S, Garcia-Fontana B, Garcia-Martin A *et al.* Atherosclerotic disease in type 2 diabetes is associated with an increase in sclerostin levels. *Diabetes Care* 2013; **36**: 1667–1674.
- 32 Frye EB, Degenhardt TP, Thorpe SR *et al.* Role of the Maillard reaction in aging of tissue proteins. Advanced glycation end product-dependent increase in imidazolium cross-links in human lens proteins. *J Biol Chem* 1998; **273**: 18714–18719.
- 33 Monnier VM, Sell DR, Genuth S. Glycation products as markers and predictors of the progression of diabetic complications. *Ann NY Acad Sci* 2005; **1043**: 567–581.
- 34 Thornalley PJ, Langborg A, Minhas HS. Formation of glyoxal, methylglyoxal and 3-deoxyglucosone in the glycation of proteins by glucose. *Biochem J* 1999; **344** Pt 1: 109–116.
- 35 Makita Z, Radoff S, Rayfield EJ *et al.* Advanced glycosylation end products in patients with diabetic nephropathy. *N Engl J Med* 1991; **325**: 836–842.
- 36 Brownlee M, Cerami A, Vlassara H. Advanced glycosylation end products in tissue and the biochemical basis of diabetic complications. *N Engl J Med* 1988; **318**: 1315–1321.
- 37 Vashishth D. The role of the collagen matrix in skeletal fragility. *Curr Osteoporos Rep* 2007; **5**: 62–66.
- 38 Schwartz AV, Garnero P, Hillier TA *et al.* Pentosidine and increased fracture risk in older adults with type 2 diabetes. *J Clin Endocrinol Metab* 2009; **94**: 2380–2386.
- 39 Sanguineti R, Storace D, Monacelli F *et al.* Pentosidine effects on human osteoblasts in vitro. *Ann NY Acad Sci* 2008; **1126**: 166–172.
- 40 McCarthy AD, Uemura T, Etcheverry SB *et al.* Advanced glycation endproducts interfere with integrin-mediated osteoblastic attachment to a type-I collagen matrix. *Int J Biochem Cell Biol* 2004; **36**: 840–848.
- 41 McCarthy AD, Etcheverry SB, Cortizo AM. Effect of advanced glycation endproducts on the secretion of insulin-like growth factor-I and its binding proteins: role in osteoblast development. *Acta Diabetol* 2001; **38**: 113–122.
- 42 Kume S, Kato S, Yamagishi S *et al.* Advanced glycation end-products attenuate human mesenchymal stem cells and prevent cognate differentiation into adipose tissue, cartilage, and bone. *J Bone Miner Res* 2005; **20**: 1647–1658.
- 43 Valcourt U, Merle B, Gineyts E *et al.* Non-enzymatic glycation of bone collagen modifies osteoclastic activity and differentiation. *J Biol Chem* 2007; **282**: 5691–5703.

- 44 Zhang L, Chen B, Tang L. Metabolic memory: mechanisms and implications for diabetic retinopathy. *Diabetes Res Clin Pract* 2012; **96**: 286–293.
- 45 Genuth S, Sun W, Cleary P *et al.* Glycation and carboxymethyllysine levels in skin collagen predict the risk of future 10-year progression of diabetic retinopathy and nephropathy in the diabetes control and complications trial and epidemiology of diabetes interventions and complications participants with type 1 diabetes. *Diabetes* 2005; **54**: 3103–3111.
- 46 Kanis JA. Diagnosis of osteoporosis and assessment of fracture risk. *Lancet* 2002; **359**: 1929–1936.
- 47 Link TM. Osteoporosis imaging: state of the art and advanced imaging. *Radiology* 2012; **263**: 3–17.
- 48 Schwartz AV, Vittinghoff E, Bauer DC *et al.* Association of BMD and FRAX score with risk of fracture in older adults with type 2 diabetes. *JAMA* 2011; **305**: 2184–2192.
- 49 Pothuau L, Carceller P, Hans D. Correlations between grey-level variations in 2D projection images (TBS) and 3D microarchitecture: applications in the study of human trabecular bone microarchitecture. *Bone* 2008; **42**: 775–787.
- 50 Harvey NC, Gluer CC, Binkley N *et al.* Trabecular bone score (TBS) as a new complementary approach for osteoporosis evaluation in clinical practice. *Bone* 2015; **78**: 216–224.
- 51 Leslie WD, Aubry-Rozier B, Lamy O *et al.* TBS (trabecular bone score) and diabetes-related fracture risk. *J Clin Endocrinol Metab* 2013; **98**: 602–609.
- 52 Dhaliwal R, Cibula D, Ghosh C *et al.* Bone quality assessment in type 2 diabetes mellitus. *Osteoporos Int* 2014; **25**: 1969–1973.
- 53 Kim JH, Choi HJ, Ku EJ *et al.* Trabecular bone score as an indicator for skeletal deterioration in diabetes. *J Clin Endocrinol Metab* 2015; **100**: 475–482.
- 54 Shepherd JA, Schousboe JT, Broy SB *et al.* Executive summary of the 2015 ISCD position development conference on advanced measures from DXA and QCT: fracture prediction beyond BMD. *J Clin Densitom* 2015; **18**: 274–286.
- 55 Melton LJ 3rd, Riggs BL, Leibson CL *et al.* A bone structural basis for fracture risk in diabetes. *J Clin Endocrinol Metab* 2008; **93**: 4804–4809.
- 56 Patsch JM, Burghardt AJ, Kazakia G *et al.* Noninvasive imaging of bone microarchitecture. *Ann NY Acad Sci* 2011; **1240**: 77–87.
- 57 NIH Consensus Development Panel on Osteoporosis Prevention D, Therapy. Osteoporosis prevention, diagnosis, and therapy. *JAMA* 2001; **285**: 785–795.
- 58 Parfitt AM, Drezner MK, Glorieux FH *et al.* Bone histomorphometry: standardization of nomenclature, symbols, and units. Report of the ASBMR Histomorphometry Nomenclature Committee. *J Bone Mineral Res* 1987; **2**: 595–610.
- 59 Hildebrand T, Ruegsegger P. A new method for the model-independent assessment of thickness in three-dimensional images. *J Microsc* 1997; **185**: 67–75.
- 60 Laib A, Hauselmann HJ, Ruegsegger P. In vivo high resolution 3D-QCT of the human forearm. *Technol Health Care* 1998; **6**: 329–337.
- 61 Manske SL, Zhu Y, Sandino C *et al.* Human trabecular bone microarchitecture can be assessed independently of density with second generation HR-pQCT. *Bone* 2015; **79**: 213–221.
- 62 Burghardt AJ, Issever AS, Schwartz AV *et al.* High-resolution peripheral quantitative computed tomographic imaging of cortical and trabecular bone microarchitecture in patients with type 2 diabetes mellitus. *J Clin Endocrinol Metab* 2010; **95**: 5045–5055.
- 63 Shu A, Yin MT, Stein E *et al.* Bone structure and turnover in type 2 diabetes mellitus. *Osteoporos Int* 2011; **23**: 635–641.
- 64 Patsch JM, Burghardt AJ, Yap SP *et al.* Increased cortical porosity in type-2 diabetic postmenopausal women with fragility fractures. *J Bone Mineral Res* 2012; **28**: 313–324.
- 65 Yu EW, Putman MS, Derrico N *et al.* Defects in cortical microarchitecture among African-American women with type 2 diabetes. *Osteoporos Int* 2014; **26**: 673–679.
- 66 Petit MA, Paudel ML, Taylor BC *et al.* Bone mass and strength in older men with type 2 diabetes: the osteoporotic fractures in men study. *J Bone Miner Res* 2010; **25**: 285–291.
- 67 Majumdar S, Genant HK, Grampp S *et al.* Correlation of trabecular bone structure with age, bone mineral density, and osteoporotic status: *in vivo* studies in the distal radius using high resolution magnetic resonance imaging. *J Bone Miner Res* 1997; **12**: 111–118.
- 68 Majumdar S, Link TM, Augat P *et al.* Trabecular bone architecture in the distal radius using magnetic resonance imaging in subjects with fractures of the proximal femur. *Osteoporosis Int* 1999; **10**: 231–239.
- 69 Link TM, Majumdar S, Augat P *et al.* *In vivo* high resolution MRI of the calcaneus: differences in trabecular structure in osteoporosis patients. *J Bone Mineral Res* 1998; **13**: 1175–1182.
- 70 Benito M, Gomberg B, Wehrli FW *et al.* Deterioration of trabecular architecture in hypogonadal men. *J Clin Endocrinol Metab* 2003; **88**: 1497–1502.
- 71 Techawiboonwong A, Song HK, Leonard MB *et al.* Cortical bone water: *in vivo* quantification with ultrashort echo-time MR imaging. *Radiology* 2008; **248**: 824–833.
- 72 Benito M, Vasilic B, Wehrli FW *et al.* Effect of testosterone replacement on trabecular architecture in hypogonadal men. *J Bone Mineral Res* 2005; **20**: 1785–1791.
- 73 Chesnut CH 3rd, Majumdar S, Newitt DC *et al.* Effects of salmon calcitonin on trabecular microarchitecture as determined by magnetic resonance imaging: results from the QUEST study. *J Bone Mineral Res* 2005; **20**: 1548–1561.
- 74 Pritchard JM, Giangregorio LM, Atkinson SA *et al.* Association of larger holes in the trabecular bone at the distal radius in postmenopausal women with type 2 diabetes mellitus compared to controls. *Arthritis Care Res (Hoboken)* 2012; **64**: 944.
- 75 Griffith JF, Yeung DK, Tsang PH *et al.* Compromised bone marrow perfusion in osteoporosis. *J Bone Mineral Res* 2008; **23**: 1068–1075.
- 76 Paccou J, Hardouin P, Cotten A *et al.* The role of bone marrow fat in skeletal health: usefulness and perspectives for clinicians. *J Clin Endocrinol Metab* 2015; **100**: 3613–3621.
- 77 Patsch JM, Li X, Baum T *et al.* Bone marrow fat composition as a novel imaging biomarker in postmenopausal women with prevalent fragility fractures. *J Bone Miner Res* 2013; **28**: 1721–1728.
- 78 Farina EK, Kiel DP, Roubenoff R *et al.* Protective effects of fish intake and interactive effects of long-chain polyunsaturated fatty acid intakes on hip bone mineral density in older adults: the Framingham Osteoporosis study. *Am J Clin Nutr* 2011; **93**: 1142–1151.
- 79 Jarvinen R, Tuppurainen M, Erkkila AT *et al.* Associations of dietary polyunsaturated fatty acids with bone mineral density in elderly women. *Eur J Clin Nutr* 2012; **66**: 496–503.
- 80 Weiss LA, Barrett-Connor E, von Muhlen D. Ratio of n-6 to n-3 fatty acids and bone mineral density in older adults: the Rancho Bernardo study. *Am J Clin Nutr* 2005; **81**: 934–938.
- 81 Farina EK, Kiel DP, Roubenoff R *et al.* Dietary intakes of arachidonic acid and alpha-linolenic acid are associated with reduced risk of hip fracture in older adults. *J Nutr* 2011; **141**: 1146–1153.



- 82 Griel AE, Kris-Etherton PM, Hilpert KF *et al.* An increase in dietary n-3 fatty acids decreases a marker of bone resorption in humans. *Nutr J* 2007; **6**: 2.
- 83 Watkins BA, Li Y, Seifert MF. Dietary ratio of n-6/n-3 PUFAs and docosahexaenoic acid: actions on bone mineral and serum biomarkers in ovariectomized rats. *J Nutr Biochem* 2006; **17**: 282–289.
- 84 Coetzer H, Claassen N, van Papendorp DH *et al.* Calcium transport by isolated brush border and basolateral membrane vesicles: role of essential fatty acid supplementation. *Prostaglandins Leukot Essens Fatty Acids* 1994; **50**: 257–266.
- 85 Ortiz-Alvarado O, Miyaoka R, Kriedberg C *et al.* Omega-3 fatty acids eicosapentaenoic acid and docosahexaenoic acid in the management of hypercalciuric stone formers. *Urology* 2012; **79**: 282–286.
- 86 Orchard TS, Cauley JA, Frank GC *et al.* Fatty acid consumption and risk of fracture in the Women's Health Initiative. *Am J Clin Nutr* 2010; **92**: 1452–1460.
- 87 Kirkland JL, Tchkonja T, Pirtskhalava T *et al.* Adipogenesis and aging: does aging make fat go MAD? *Exp Gerontol* 2002; **37**: 757–767.
- 88 Monickaraj F, Aravind S, Gokulakrishnan K *et al.* Accelerated aging as evidenced by increased telomere shortening and mitochondrial DNA depletion in patients with type 2 diabetes. *Mol Cell Biochem* 2012; **365**: 343–350.
- 89 de Heredia FP, Larque E, Portillo MP *et al.* Age-related changes in fatty acids from different adipose depots in rat and their association with adiposity and insulin. *Nutrition* 2008; **24**: 1013–1022.
- 90 Morley JE. Diabetes and aging: epidemiologic overview. *Clin Geriatr Med* 2008; **24**: 395–405.
- 91 Ma YH, Schwartz AV, Sigurdsson S *et al.* Circulating sclerostin associated with vertebral bone marrow fat in older men but not women. *J Clin Endocrinol Metab* 2014; **99**: E2584–E2590.
- 92 Compston JE, Watts NB, Chapurlat R *et al.* Obesity is not protective against fracture in postmenopausal women: GLOW. *Am J Med* 2011; **124**: 1043–1050.
- 93 Nielson CM, Marshall LM, Adams AL *et al.* BMI and fracture risk in older men: the osteoporotic fractures in men study (MrOS). *J Bone Miner Res* 2011; **26**: 496–502.
- 94 Johansson H, Kanis JA, Oden A *et al.* A meta-analysis of the association of fracture risk and body mass index in women. *J Bone Miner Res* 2014; **29**: 223–233.
- 95 Sornay-Rendu E, Boutroy S, Vilaythiou N *et al.* In obese postmenopausal women, bone microarchitecture and strength are not commensurate to greater body weight: the Os des Femmes de Lyon (OFELY) study. *J Bone Miner Res* 2013; **28**: 1679–1687.
- 96 Gerdhem P, Isaksson A, Akesson K *et al.* Increased bone density and decreased bone turnover, but no evident alteration of fracture susceptibility in elderly women with diabetes mellitus. *Osteoporos Int* 2005; **16**: 1506–1512.
- 97 Weyer C, Funahashi T, Tanaka S *et al.* Hypoadiponectinemia in obesity and type 2 diabetes: close association with insulin resistance and hyperinsulinemia. *J Clin Endocrinol Metab* 2001; **86**: 1930–1935.
- 98 Bredella MA, Torriani M, Ghomi RH *et al.* Determinants of bone mineral density in obese premenopausal women. *Bone* 2011; **48**: 748–754.
- 99 Gilsanz V, Chalfant J, Mo AO *et al.* Reciprocal relations of subcutaneous and visceral fat to bone structure and strength. *J Clin Endocrinol Metab* 2009; **94**: 3387–3393.
- 100 Cohen A, Dempster DW, Recker RR *et al.* Abdominal fat is associated with lower bone formation and inferior bone quality in healthy premenopausal women: a transiliac bone biopsy study. *J Clin Endocrinol Metab* 2013; **98**: 2562–2572.
- 101 Amrein K, Amrein S, Drexler C *et al.* Sclerostin and its association with physical activity, age, gender, body composition, and bone mineral content in healthy adults. *J Clin Endocrinol Metab* 2012; **97**: 148–154.
- 102 Bridges D, Randall C, Hansma PK. A new device for performing reference point indentation without a reference probe. *Rev Sci Instrum* 2012; **83**: 044301.
- 103 Randall C, Bridges D, Guerri R *et al.* Applications of a new handheld reference point indentation instrument measuring bone material strength. *J Med Dev* 2013; **7**: 410051–410056.
- 104 Farr JN, Drake MT, Amin S *et al.* *In vivo* assessment of bone quality in postmenopausal women with type 2 diabetes. *J Bone Miner Res* 2013; **29**: 787–795.
- 105 Diez-Perez A, Guerri R, Nogues X *et al.* Microindentation for *in vivo* measurement of bone tissue mechanical properties in humans. *J Bone Miner Res* 2010; **25**: 1877–1885.
- 106 Guerri-Fernandez RC, Nogues X, Quesada Gomez JM *et al.* Microindentation for *in vivo* measurement of bone tissue material properties in atypical femoral fracture patients and controls. *J Bone Miner Res* 2013; **28**: 162–168.



This work is licensed under a Creative Commons Attribution-NonCommercial-NoDerivs 4.0 International License. The images or other third party material in this article are included in the article's Creative Commons license, unless indicated otherwise in the credit line; if the material is not included under the Creative Commons license, users will need to obtain permission from the license holder to reproduce the material. To view a copy of this license, visit <http://creativecommons.org/licenses/by-nc-nd/4.0/>