

Keywords: clear-cell renal cell carcinoma; interleukin-6; interleukin-6 receptor; prognostic biomarker; conditional survival; cancer-specific survival; organ-confined disease

Prognostic value of interleukin-6 and interleukin-6 receptor in organ-confined clear-cell renal cell carcinoma: a 5-year conditional cancer-specific survival analysis

Qiang Fu^{1,5}, Yuan Chang^{2,5}, Huimin An³, Hangcheng Fu¹, Yu Zhu³, Le Xu², Weijuan Zhang^{*,4} and Jiejie Xu^{*,1}

¹Department of Biochemistry and Molecular Biology, School of Basic Medical Sciences, Fudan University, Shanghai, 200032, China; ²Department of Urology, Zhongshan Hospital, Fudan University, Shanghai 200032, China; ³Department of Urology, Shanghai Cancer Center, Shanghai Medical College, Fudan University, Mailbox 226, 138 Yixueyuan Road, Shanghai 200032, China and ⁴Department of Immunology, School of Basic Medical Sciences, Fudan University, Shanghai 200032, China

Background: Interleukin-6 (IL-6) is the major cytokine that induces transcriptional acute and chronic inflammation responses, and was recently incorporated as a recurrence prognostication signature for localised clear-cell renal cell carcinoma (ccRCC). As the prognostic efficacy of initial risk factors may ebb during long-term practice, we aim to report conditional cancer-specific survival (CCSS) of RCC patients and evaluate the impact of IL-6 as well as its receptor (IL-6R) to offer more relevant prognostic information accounting for elapsing time.

Methods: We enrolled 180 histologically proven localised ccRCC patients who underwent nephrectomy between 2001 and 2004 with available pathologic information. Five-year CCSS was determined and stratified by future prognostic factors. Constant Cox regression analysis and Harrell's concordance index were used to indicate the predictive accuracy of established models.

Results: The 5-year CCSS of organ-confined ccRCC patients with both IL-6- and IL-6R-positive expression was 52% at year 2 after surgery, which was close to locally advanced patients (48%, $P=0.564$) and was significantly poorer than organ-confined patients with IL-6- or IL-6R-negative expression (89%, $P<0.001$). Multivariate analyses proved IL-6 and IL-6R as independent predictors after adjusting for demographic factors. Concordance index of pT-IL-6-IL-6R risk stratification was markedly higher compared with the stage, size, grade and necrosis prognostic model (0.724 vs 0.669, $P=0.002$) or UCLA Integrated Staging System (0.724 vs 0.642, $P=0.007$) in organ-confined ccRCC population during the first 5 years.

Conclusions: Combined IL-6 and IL-6R coexpression emerges as an independent early-stage immunologic prognostic factor for organ-confined ccRCC patients.

The incidence rates and mortality of renal cell carcinoma (RCC) in the United States have increased by more than 30% over the past two decades (Siegel *et al*, 2015). However, the outcomes of RCC differ greatly between diagnostic stage, tumour grade and histologic subtypes (Ljungberg *et al*, 2015). The 10-year CSS for localised clear-cell RCC (ccRCC; representing 65–75% cases of

RCC) is only 55% (Tilki *et al*, 2014). In the past 10 years, advanced tools have been developed to improve the clinical outcome prediction for localised RCC patients, such as the UCLA Integrated Staging System (UISS) and the stage, size, grade and necrosis (SSIGN) prognostic model (Frank *et al*, 2002; Zisman *et al*, 2002). However, the prognostic efficacy of those initial prognostic factors

*Correspondence: Dr W Zhang; E-mail: weijuanzhang@fudan.edu.cn or Dr J Xu; E-mail: jjxufdu@fudan.edu.cn

⁵These authors contributed equally to this work.

Received 22 June 2015; revised 11 August 2015; accepted 7 October 2015; published online 10 November 2015

© 2015 Cancer Research UK. All rights reserved 0007–0920/15

may ebb during long-term practice because the emerging environmental risk factors and the following physical conditions after treatment may extensively affect the outcomes, and patients may be more interested in whether having outlived a period time when given an agent would benefit survival in the future. Therefore, the ability to adjust estimations on the basis of survival since treatment initiation or therapy duration would be clinically meaningful. Conditional survival, which is defined as the probability of surviving an additional time given a condition that the patients has already survived a specific time, can just provide this practical information over time.

Currently, several novel models have integrated molecular markers and aim to predict individual outcome, which differed with regard to the number and type of covariates, tool properties and end points (Leibovich *et al*, 2003; Brookman-May *et al*, 2013; Heng *et al*, 2013). As a well-known inflammatory cytokine, interleukin-6 (IL-6) has been implicated in a wide variety of human biological functions such as final steps of B-cells differentiation, haematopoiesis and platelet production, as well as acute and chronic inflammation-associated diseases including rheumatoid arthritis and cancers. Interleukin-6 was recently found to be secreted by RCC tumour cells and acts as an autocrine tumour growth factor to induce transcriptional inflammatory response and promote tumour progression through JAK-STAT pathway (Wolf *et al*, 2014). In fact, RCC is one of the typical diseases that act through extensive local infiltration of inflammatory cells. In a large prospective multicenter study, Negrier *et al* (2004) have reported that circulating IL-6 level is an important independent prognostic factor in metastatic RCC patients and could be helpful in personalised treatment. Our previous work also revealed that IL-11 receptor (which share high homology with IL-6R) predicted poor outcome of early-stage RCC (Pan *et al*, 2015). More recently, in *the Lancet Oncology*, Rini *et al* (2015) described the identification and validation of a 16-gene signature that showed improved recurrence prognostication in localised ccRCC patients when compared with Leibovich score. Among those 16 genes, only IL-6 was associated with the inflammation pathway; this highlighted the representative prognostic role of IL-6 in RCC (Rini *et al*, 2015).

The aim of our present study is to assess the intratumoral presence of IL-6/IL-6R expression in ccRCC patients and to determine their prognostic values through conditional survival analyses, which has been previously conducted in RCC, as well as to appreciate their potential clinical interests (Harshman *et al*, 2012).

MATERIALS AND METHODS

Patient population. The study database included 282 patients with RCC from Zhongshan Hospital, Fudan University, Shanghai, China. The primary inclusion criterion was pathologically proven RCC patients receiving surgery from 2001 to 2004. Thus, 465 eligible formalin-fixed paraffin-embedded (FFPE) specimens were obtained between 10 January 2001 and 30 December 2004, and 183 patients were excluded according to preset exclusion criteria (Supplementary Table S1). All valid patients received nephrectomy after diagnoses and none received radiotherapy or chemotherapy before surgery. To ensure consistent data collection, baseline demographic, clinical and laboratory data were collected simultaneously, MRI and CT scans were reassessed in radiology units and all archived diagnostic H&E slides were pathologically central reviewed by a pathologist (L Chen) independently. This study was approved by the institutional ethical review boards of the hospital and all patients stated informed consent along with phone call follow-up.

The primary outcome of interest was 5-year conditional cancer-specific survival (5-year CCSS). Cancer-specific survival (CSS) was defined as the time from surgery to death attributable to cancer

according to clinicians and archived files; occurrences were censored if death was a result of something other than renal cancer or if the patient was alive at the end of follow-up. 5-Year conditional survival represents the probability that a patient with cancer will survive additional 5 years, given that the patient has already survived x years (0–5 years in this report). For example, to compute the 5-year CCSS for patients who have survived x years, calculate $(x+5)$ -year cumulative CSS, which was limited to the patients who were still alive at the beginning of x years (Zamboni *et al*, 2010).

Data collection. Follow-up data for all patients were obtained from the most recent medical review. All patients were examined routinely every 5–6 months during the first 5 years of follow-up and annually thereafter. The follow-up period ended in November 2014.

Survival and primary cancer data for all valid patients were included in our analyses. A standardised data form was created to retrieve all relevant information on sociodemographic data (age at surgery, gender), pathologic data (pathologic tumour, node, and metastasis status, tumour location), treatment-related data (type of resection or chemotherapy) and clinical data (presence of any malaises or symptoms). Histological subtypes were restratified according to 2014 EAU guidelines (Ljungberg *et al*, 2015). Tumour size was defined as the greatest tumour diameter based on pathological specimen. Tumour node metastasis staging was reclassified according to the 2010 AJCC TNM classification (Kim *et al*, 2011). Fuhrman grade, microvascular invasion (MVI), coagulative necrosis, sarcomatoid features and rhabdoid differentiation were reported according to the 2012 ISUP consensus (Delahunt *et al*, 2013). Symptomatic presentation and Eastern Cooperative Oncology Group performance status (ECOG-PS) were preoperatively recorded and rearchived as described previously (Karakiewicz *et al*, 2007). UCLA Integrated Staging System and SSIGN scores were applied to all valid patients according to the original scoring algorithm, respectively.

Statistical analysis. Associations between categorical and continuous clinicopathologic parameters vs IL-6/IL-6R expression groups were evaluated using the Fisher's exact test and Wilcoxon's rank-sum test, respectively. CSS was assessed and graphically illustrated using Kaplan–Meier or life-table method, and log-rank test was used for comparing different scoring categories. Independent associations between CSS and assessed clinicopathologic predictors were evaluated using multivariate Cox proportional hazards regression models, embodied by hazard ratios (HRs) and 95% confidence intervals (95% CIs) for each level of categories. The concordance index (C index) was used to assess the predictive accuracy of different models, 0.5 is equivalent to toss of a coin and 1.0 represents ideal prediction (Harrell *et al*, 1996). The comparison between different C index was performed by Hanley–McNeil test (Hanley and McNeil, 1983). To reduce overfit bias and internally validate the predictive accuracy estimates, multivariable models and C index calculations were subjected to 1000 bootstrap resamples.

Statistical analyses were performed with SPSS, version 21.0 (IBM, Armonk, NY, USA), Stata SE, version 12.1 (Stata, College Station, TX, USA) and R software packages, version 3.1.2 (The R Foundation for Statistical Computing; <http://www.r-project.org/>). A two-sided P -value <0.05 was considered to be statistically significant for all reports.

Procedures. Primary FFPE RCC samples were obtained from the Department of Urology, Zhongshan Hospital of Fudan University with patients' consent and approval of the institutional review board of Fudan University. Microarray development and immunohistochemistry were performed according to the methods previously used (Xu *et al*, 2014), with appropriate antibodies after control staining (anti-IL-6 antibody, ab6672 (Abcam), diluted 1/100; anti-IL-6R antibody, ab128008 (Abcam), diluted 1/400). Immunohistochemistry sections and corresponding H&E sections were scanned by a fully

Table 1. CSS estimates in relationship to prognostic variables and IL-6/IL-6R expression in localised ccRCC cohorts

Variable (in localised ccRCC cases, n = 180)	IL-6							IL-6R						
	All patients		Negative		Positive		P-value ^a	Negative		Positive		P-value ^a		
	Cases (%)	10-year CSS	10-year CSS	n	10-year CSS	n		10-year CSS	n	10-year CSS	n			
Follow-up time (months)														
Median (IQR)	110 (82–117)		110 (101–115)		104 (65–120)		0.565 ^b	111 (80–118)		110 (92–115)		0.869 ^b		
Age at surgery (years)							0.367 ^c						0.881 ^c	
Median (IQR)	58 (50–68)		57 (50–68)		59 (48–69)		0.560 ^b	58 (49–67)		58 (50–69)		0.752 ^b		
≤ 58	95 (52.8%)	74.3 ± 4.9	85.0 ± 4.9	59	57.8 ± 8.9	36	S	77.5 ± 7.3	43	72.4 ± 6.3	52	N		
> 58	85 (47.2%)	57.6 ± 5.9	67.4 ± 7.2	47	41.1 ± 10.1	38	N	70.6 ± 8.3	37	48.9 ± 7.9	48	N		
Gender							0.631 ^c						0.972 ^c	
Female	61 (33.9%)	60.6 ± 6.8	74.3 ± 7.9	34	38.2 ± 10.7	27	S	65.5 ± 10.0	27	55.4 ± 9.0	34	N		
Male	119 (66.1%)	69.4 ± 4.6	79.1 ± 5.0	72	57.0 ± 8.5	47	S	79.1 ± 6.5	53	64.4 ± 6.2	66	N		
Symptomatic presentation							0.945 ^c						0.973 ^c	
Absent	70 (38.9%)	87.2 ± 4.2	94.4 ± 3.9	41	77.0 ± 8.3	29	S	96.2 ± 3.8	31	80.5 ± 6.7	39	N		
Present	110 (61.1%)	54.1 ± 5.3	67.2 ± 6.1	65	35.6 ± 8.2	45	S	60.5 ± 8.1	49	50.2 ± 6.6	61	N		
ECOG-PS							0.966 ^c						> 0.999 ^c	
0	153 (85.0%)	69.6 ± 4.1	79.6 ± 4.4	90	54.4 ± 7.3	63	S	75.1 ± 6.0	68	65.7 ± 5.5	85	N		
≥ 1	27 (15.0%)	50.8 ± 10.2	64.6 ± 12.8	16	29.1 ± 15.7	11	N	71.6 ± 14.0	12	40.0 ± 12.6	15	N		
Surgery							0.553 ^c						0.242 ^c	
PN	32 (17.8%)	64.3 ± 8.6	76.5 ± 10.3	17	49.5 ± 13.6	15	N	80.0 ± 12.6	11	57.1 ± 10.8	21	N		
RN	148 (82.2%)	67.5 ± 4.2	77.8 ± 4.7	89	50.7 ± 7.6	59	S	73.6 ± 6.1	69	62.7 ± 5.8	79	N		
Tumour size (cm)							0.359 ^c						0.880 ^c	
Median (IQR)	4.0 (3.0–6.0)		4.0 (2.9–6.0)		4.0 (3.0–6.0)		0.267 ^b	4.0 (3.0–6.0)		4.0 (3.0–6.0)		0.714 ^b		
≤ 4.0	103 (57.2%)	74.4 ± 4.7	84.8 ± 4.7	64	55.8 ± 9.4	39	S	81.2 ± 6.5	45	70.0 ± 6.4	58	N		
> 4.0	77 (42.8%)	56.6 ± 6.2	65.7 ± 7.9	42	44.0 ± 9.6	35	N	66.2 ± 9.0	35	48.8 ± 8.3	42	N		
pT							0.636 ^c						0.733 ^c	
pT1	117 (65.0%)	77.9 ± 4.3	87.3 ± 4.2	71	62.4 ± 8.6	46	S	85.5 ± 5.5	53	72.5 ± 5.8	64	S		
pT2	21 (11.7%)	65.2 ± 12.3	72.7 ± 17.7	11	53.3 ± 17.6	10	S	66.7 ± 27.2	8	59.5 ± 14.1	13	N		
pT3	41 (22.8%)	37.2 ± 7.8	50.0 ± 10.2	24	20.2 ± 10.2	17	N	42.4 ± 12.0	18	34.2 ± 10.0	23	N		
pT4	1 (0.5%)	100	—	0	100	1	NA	100	1	—	0	NA		
Fuhrman grade							0.336 ^c						0.929 ^c	
1	43 (23.9%)	89.4 ± 5.0	95.5 ± 4.4	26	80.5 ± 10.2	17	N	93.3 ± 6.4	20	86.5 ± 7.3	23	N		
2	79 (43.9%)	74.3 ± 5.3	86.8 ± 5.0	48	50.6 ± 11.1	31	S	89.8 ± 5.6	33	64.6 ± 7.5	46	N		
3	38 (21.1%)	52.8 ± 9.0	55.9 ± 10.5	24	49.0 ± 15.7	14	N	56.0 ± 12.8	18	52.0 ± 11.8	20	N		
4	20 (11.1%)	19.5 ± 9.6	31.3 ± 17.8	8	10.0 ± 9.4	12	S	19.4 ± 16.2	9	18.2 ± 11.6	11	N		
Multifocality							0.572 ^c						0.586 ^c	
No	177 (98.3%)	67.0 ± 3.9	78.3 ± 4.2	105	49.6 ± 6.8	72	S	75.6 ± 5.5	78	60.9 ± 5.2	99	N		
Yes	3 (1.7%)	50.0 ± 35.4	0	1	100	2	NA	0	2	100	1	NA		
MVI							0.850 ^c						0.351 ^c	
Absent	145 (80.6%)	69.0 ± 4.3	79.6 ± 4.6	86	52.3 ± 7.6	59	S	76.2 ± 5.9	67	63.8 ± 5.7	78	N		
Present	35 (19.4%)	58.4 ± 8.6	68.9 ± 10.6	20	45.7 ± 13.1	15	N	67.3 ± 13.6	13	53.7 ± 10.8	22	N		
Sarcomatoid features							0.311 ^c						0.733 ^c	
None	171 (95.0%)	68.8 ± 3.9	80.3 ± 4.2	99	51.7 ± 6.9	72	S	77.0 ± 5.4	77	63.0 ± 5.3	94	N		
Presented	9 (5.0%)	29.6 ± 16.4	38.1 ± 19.9	7	0	2	S	0	3	33.3 ± 19.2	6	N		
Coagulative necrosis							0.706 ^c						0.852 ^c	
None	144 (80.0%)	71.3 ± 4.1	80.0 ± 4.5	86	57.8 ± 7.4	58	S	76.8 ± 5.8	65	67.4 ± 5.5	79	N		
Presented	36 (20.0%)	49.0 ± 9.2	67.0 ± 11.2	20	21.4 ± 12.7	16	S	63.5 ± 15.3	15	38.5 ± 11.2	21	N		
Rhabdoid differentiation							0.066 ^c						0.078 ^c	
None	172 (95.6%)	68.7 ± 3.8	77.3 ± 4.3	104	54.9 ± 7.0	68	S	74.4 ± 5.5	79	64.4 ± 5.2	93	N		
Presented	8 (4.4%)	18.2 ± 16.3	100	2	0	6	N	100	1	17.9 ± 16.0	7	N		
IL-6R							0.879 ^c							
Negative	80 (44.4%)	74.5 ± 5.5	78.5 ± 6.4	48	69.3 ± 9.5	32	N							
Positive	100 (55.6%)	61.3 ± 5.1	76.6 ± 5.7	58	36.2 ± 8.7	42	S							

Abbreviations: ccRCC = clear-cell renal cell carcinoma; CSS = cancer-specific survival; ECOG-PS = Eastern Cooperative Oncology Group performance status; IL-6 = interleukin-6; IL-6R = interleukin-6 receptor; IQR = interquartile range; MVI = microvascular invasion; N = nonsignificant (log-rank test P ≥ 0.05); NA = not available; S = significant (log-rank test P < 0.05). Outcome estimation is limited to the largest survival time when it is censored.

^aLog-rank test of equality of survival distributions for the different levels of IL-6/IL-6R.

^bWilcoxon's rank-sum test.

^cFisher's exact test to assess the correlation between variables and IL-6/IL-6R.

automated microscopy system (Leica DM6000 B; Leica Microsystems GmbH, Mannheim, Germany), images were captured by Leica CV-M2CL camera and analysed by Leica Ariol 4.0 software (Leica Microsystems GmbH, Mannheim, Germany) automatically. For each sample, a total area of 4 mm² was analysed (4 circulars from separate places of samples, each has 1 mm² area). Cases were considered positive for expression when >10% of tumour cells showed diffuse immunoreactivity.

RESULTS

Study population. The flow of patients through the study is shown in Supplementary Table S1. After applying initial exclusion criteria, 282 of 465 recruited patients were included in

the analyses. No statistically significant differences in patient or tumour characteristics or survival outcomes were observed for patients with included vs excluded data (Supplementary Table S2 and Supplementary Figure S1, online only).

The valid population included 198 males and 84 females, with a median age at surgery of 56 years (IQR, 49–67). Median follow-up of the survivors was 111 months (IQR 90–117, range 24–120, n = 282). The morphological characteristics of patients are listed in Supplementary Table S5. One hundred and eighty-eight of 282 (66.7%) patients were ccRCC accompanied with a poor 10-year CSS of 63.9%; the number of these ccRCC specimens with positive IL-6 and IL-6R staining were 75 (39.9%) and 105 (55.9%), respectively.

Correlation analyses between prognostic variables, markers and outcome. We compared CSS between different IL-6/IL-6R

Table 2. 5-year CCSS and in relationship to IL-6 and IL-6R

	5-year CCSS rates as time elapsed since surgery					
	Baseline	1 Year	2 Year	3 Year	4 Year	5 Year
Cases, n	180	178	172	161	146	129
5-year CCSS rates (%)	79.7 ± 3.1	75.3 ± 3.4	74.3 ± 3.5	75.0 ± 3.6	78.8 ± 3.6	83.8 ± 3.6
Survival gain (%) ^a	—	- 5.5 ± 4.6	- 1.0 ± 4.9	+ 0.3 ± 5.0	+ 3.8 ± 5.1	+ 5.0 ± 5.1
Survival gain (%) ^b	—	- 5.5 ± 4.6	- 5.4 ± 4.7	- 4.7 ± 4.7	- 0.9 ± 4.7	+ 4.1 ± 4.7
Age at surgery (years)						
≤58	81.7 ± 4.0	81.4 ± 4.1	83.7 ± 4.0	85.1 ± 4.0	86.6 ± 4.0	90.9 ± 4.0
>58	77.3 ± 4.7	68.1 ± 5.4	63.5 ± 5.7	63.4 ± 5.9	68.8 ± 6.2	74.6 ± 6.2
P-value	0.545	0.094	0.007	0.004	0.019	0.007
Gender						
Female	75.9 ± 5.6	68.0 ± 6.3	68.2 ± 6.4	65.0 ± 6.9	71.8 ± 7.0	78.5 ± 6.8
Male	81.6 ± 3.6	79.1 ± 3.9	77.3 ± 4.1	80.1 ± 4.0	82.2 ± 4.1	86.2 ± 4.2
P-value	0.395	0.127	0.217	0.071	0.197	0.220
pT						
pT1 + pT2	86.2 ± 3.0	82.4 ± 3.4	82.7 ± 3.4	82.6 ± 3.6	84.9 ± 3.5	88.4 ± 3.6
pT3 + pT4	59.4 ± 7.6	53.3 ± 7.8	48.0 ± 8.1	50.1 ± 8.6	56.2 ± 9.6	65.3 ± 10.0
P-value	<0.001	<0.001	<0.001	<0.001	0.001	0.004
IL-6						
Negative	88.2 ± 3.2	83.9 ± 3.7	80.7 ± 4.0	81.1 ± 4.0	85.0 ± 3.9	85.0 ± 4.0
Positive	67.2 ± 5.6	62.6 ± 6.0	64.0 ± 6.3	63.8 ± 6.9	66.7 ± 7.3	66.3 ± 8.0
P-value	0.001	0.001	0.012	0.020	0.011	0.027
Organ-confined subgroup (pT1 + pT2)						
Negative	94.8 ± 2.5	90.7 ± 3.3	89.3 ± 3.6	87.8 ± 3.8	89.6 ± 3.7	90.9 ± 3.6
Positive	73.2 ± 6.2	69.5 ± 6.7	72.1 ± 6.7	72.7 ± 7.3	76.0 ± 7.2	83.3 ± 7.8
P-value	<0.001	0.001	0.008	0.034	0.030	0.424
Locally advanced subgroup (pT3 + pT4)						
Negative	66.7 ± 9.6	60.9 ± 10.2	52.2 ± 10.4	57.1 ± 10.8	66.7 ± 11.1	75.0 ± 10.8
Positive	50.0 ± 11.8	43.8 ± 11.9	42.2 ± 12.7	40.2 ± 13.6	40.9 ± 15.6	50.0 ± 17.7
P-value	0.259	0.206	0.495	0.372	0.280	0.376
IL-6R						
Negative	86.4 ± 4.0	80.4 ± 4.7	79.8 ± 4.9	80.0 ± 5.0	84.8 ± 4.7	87.9 ± 3.6
Positive	74.6 ± 4.4	71.4 ± 4.7	69.9 ± 4.9	71.0 ± 5.0	73.9 ± 5.2	74.7 ± 7.8
P-value	0.052	0.153	0.148	0.204	0.140	0.153
Organ-confined subgroup (pT1 + pT2)						
Negative	94.5 ± 3.1	90.5 ± 4.1	90.8 ± 4.1	89.5 ± 4.5	91.2 ± 4.2	90.9 ± 3.6
Positive	80.0 ± 4.6	76.4 ± 5.0	76.5 ± 5.1	77.2 ± 5.2	79.8 ± 5.3	83.3 ± 7.8
P-value	0.019	0.038	0.048	0.070	0.093	0.424
Locally advanced subgroup (pT3 + pT4)						
Negative	62.7 ± 11.2	51.3 ± 11.7	48.1 ± 12.1	51.0 ± 12.5	61.9 ± 13.4	75.0 ± 10.8
Positive	56.5 ± 10.3	54.5 ± 10.6	47.6 ± 10.9	50.0 ± 11.8	52.5 ± 13.1	50.0 ± 17.7
P-value	0.579	0.966	0.855	0.959	0.801	0.376

Abbreviations: CCSS = conditional cancer-specific survival; IL = interleukin; IL-6R = interleukin-6 receptor. Survival rate estimations are expressed in percentage (%). S.e. are reported after plus-minus signs. For each value, the 95% confidence interval can be calculated as mean ± 1.96 × s.e. Log-rank test is used to assess the equality of survival distributions for the different levels of prognostic characteristics at each time point.

^aAs compared with baseline.

^bAs compared with previous time point.

expression subgroups following detailed histological subtypes. The results (Table 1) showed that IL-6 (+) ccRCC patients had significantly poorer survival than IL-6 (-) ccRCC patients ($P=0.002$), and IL-6R revealed the same patterns ($P=0.038$). In view of the apparently different prognosis and treatment between localised and metastatic ccRCC, we analysed the relationships between IL-6/IL-6R and potential prognostic variables in localised patients (Table 1, lower panel) and metastatic patients (data not shown because of the limited cases, $n=8$). However, no correlation was noted here.

The impact of various prognostic factors on CCSS was assessed, and pathologic features including tumour size, pT, Fuhrman grade, symptomatic presentation, sarcomatoid features, rhabdoid differentiation and IL-6 expression were initially predictive for CCSS and progressively decreased over time (Supplementary Table S3). pT was the most significant predictor throughout this period. Consistent with the previous findings, IL-6R showed prognostic power only in organ-confined (OC) subgroups after stratification using pT (decreased over time and not significant after year 3), and IL-6 expression remained significant in OC subgroups (Table 2).

To illustrate CSS estimates, 10-year Kaplan–Meier curves are shown in Figure 1. It shows that IL-6 (-) significantly benefited patients' CSS in OC population ($P=0.006$), but it was not the same case in locally advanced (LA) population ($P=0.894$) (Figure 1A and B). Furthermore, the strategy of combining IL-6 and IL-6R indicated that IL-6 (+)/IL-6R (+) patients experienced the shortest CSS (median=78 month) compared with any other groups (IL-6 (+)/IL-6R (-), IL-6 (-)/IL-6R (+), IL-6 (-)/IL-6R (-), median not reached) (Figure 1C). Interestingly, the OC patients with IL-6/IL-6R both positive shared the same CSS with LA patients ($P>0.999$) (Figure 1D).

Multivariate analysis. The changing impact of independent parameters on CSS over time was assessed upon multivariable Cox regression analysis. In the crude full model, pT3-4 disease, high Fuhrman grade, MVI present, sarcomatoid features present, IL-6 (+), and IL-6R (+) were significantly associated with poorer survival at baseline; the effect of pathologic features on CSS decreased over time as illustrated by the decrease in HRs (Supplementary Table S4). We involved these factors in a reduced model adjusted by age and gender to control for their influence as

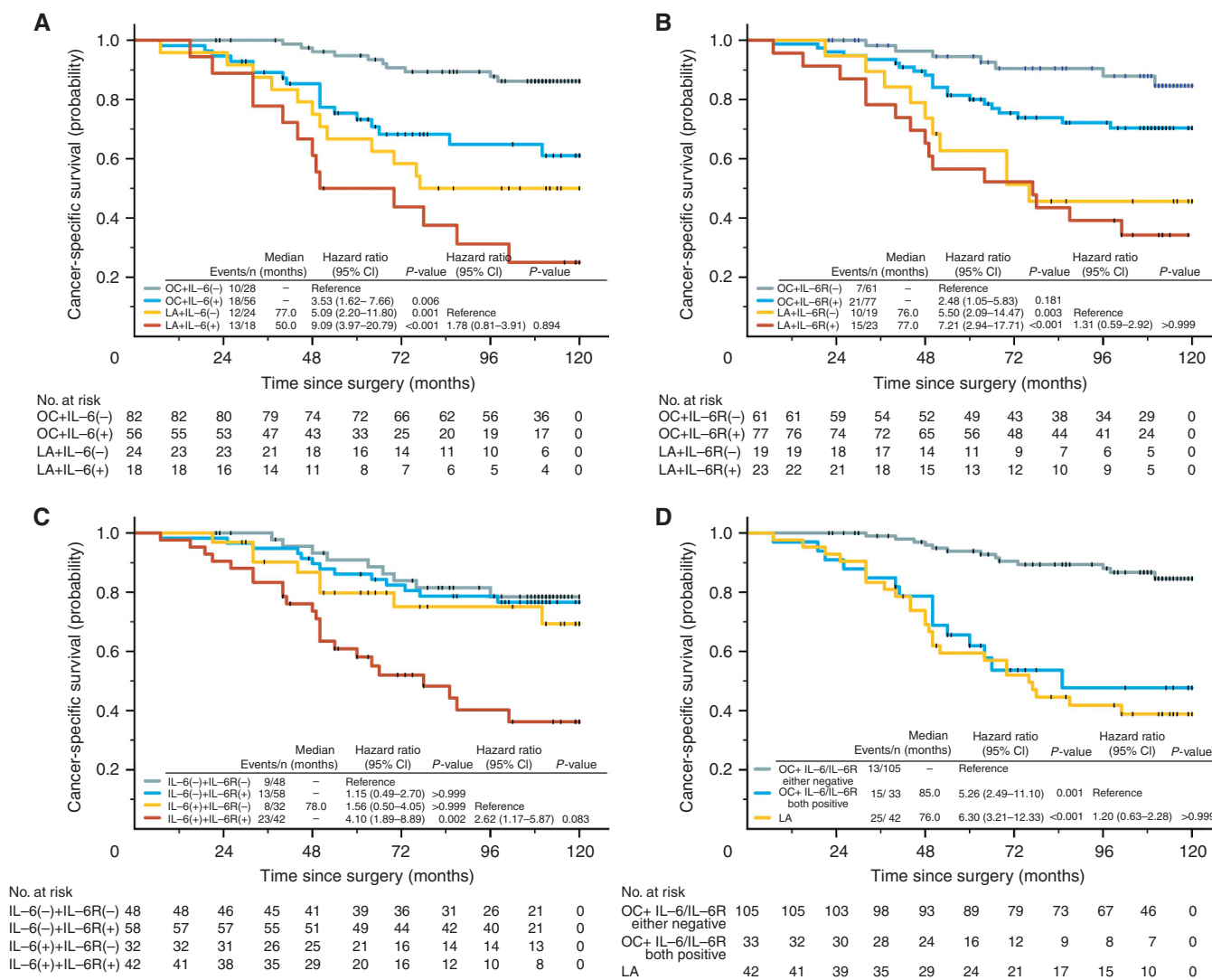


Figure 1. Kaplan–Meier curves of 10-year cancer-specific survival for patients with localised ccRCC, stratified by (A) IL-6 and pT, (B) IL-6R and pT, (C) IL-6 and IL-6R and (D) IL-6, IL-6R and pT. To compare stratum in each panel, HR and 95% CI were obtained from univariate analyses for each categories, and relevant P-values were obtained from pairwise log-rank tests after Bonferroni correction. OA, organ-confined (pT1-2N0M0 stage disease); LA, locally advanced (pT3-4N0M0 stage disease).

covariates; IL-6 and IL-6R were still significant multivariate determinants of 5-year survival expectancy at surgery; the HR of IL-6R decreased from 2.69 to 2.02 and it fell out of the predictive factor list at year 3 (Table 3).

Comparison of SSIGN, UISS and the new recombination risk. Based on the above-mentioned findings, we considered IL-6, IL-6R and pT as synergetic predictors and incorporated them into a new recombination risk (termed 'pT-IL-6-IL-6R risk'; low risk: OC patients with IL-6/IL-6R either negative; high risk: OC patients with IL-6/IL-6R both positive, and LA patients) (Table 4).

When stratified by UISS, SSIGN and pT-IL-6-IL-6R risk, the discriminations of 5-year CCSS were statistically significant at all time points ($P < 0.001$ for all comparisons except that at year 5 of pT-IL-6-IL-6R risk), the relative risks for each model levels are shown in Figure 2A–D.

The predictive power for each models at any time point was assessed by C-index and further stratified by OC or LA population (Figure 2E and F and Supplementary Figure S2, online only). In the primary cohort, C-index of SSIGN or pT-IL-6-IL-6R risk were both higher compared with UISS and the gaps narrowed as time elapsed; no statistical difference was observed between pT-IL-6-IL-6R

Table 3. Reduced constant multivariable Cox regression analysis for predicting 5-year CCSS over time

	Multivariable model as time elapsed since surgery					
	Baseline	1 Year	2 Year	3 Year	4 Year	5 Year
Reduced Model^a						
pT (pT3 + pT4 vs pT1 + pT2)						
HR	4.35 (+0.22)	4.03 (+0.16)	4.40 (+0.22)	4.29 (+0.26)	4.76 (+0.37)	3.86 (+0.47)
95% CI	2.10–9.02	2.06–7.88	2.27–8.52	2.13–8.66	2.07–10.94	1.42–10.45
P-value	<0.001 (0.001)	<0.001 (0.001)	<0.001 (0.001)	<0.001 (0.001)	<0.001 (0.002)	0.008 (0.004)
Fuhrman grade (3 + 4 vs 1 + 2)						
HR	4.11 (+0.46)	3.49 (+0.27)	2.72 (+0.18)	2.53 (+0.24)	2.32 (+0.22)	2.08 (+0.21)
95% CI	1.98–8.53	1.79–6.80	1.42–5.25	1.26–5.07	1.04–5.21	0.73–5.95
P-value	<0.001 (0.001)	<0.001 (0.001)	0.003 (0.001)	0.009 (0.018)	0.041 (0.041)	0.171 (0.173)
MVI (present vs absent)						
HR	2.20 (+0.05)	2.04 (+0.07)	1.83 (+0.07)	2.16 (+0.12)	2.34 (+0.12)	1.21 (+0.01)
95% CI	1.05–4.62	1.02–4.08	0.90–3.72	1.04–4.48	0.99–5.52	0.334–4.40
P-value	0.037 (0.025)	0.044 (0.047)	0.095 (0.095)	0.038 (0.051)	0.052 (0.060)	0.770 (0.734)
Sarcomatoid features (presented vs none)						
HR	4.10 (–0.75)	4.32 (–0.24)	3.57 (–0.57)	4.06 (–0.90)	3.72 (–2.71)	4.36 (–3.34)
95% CI	1.24–13.59	1.44–12.91	1.09–11.76	1.18–14.00	0.70–19.79	0.74–25.82
P-value	0.021 (0.010)	0.009 (0.013)	0.036 (0.050)	0.026 (0.043)	0.123 (0.101)	0.105 (0.099)
IL-6 (positive vs negative)						
HR	4.17 (+0.05)	3.58 (+0.06)	2.59 (+0.03)	2.68 (+0.01)	2.95 (+0.22)	2.20 (+0.04)
95% CI	1.97–8.83	1.81–7.07	1.35–4.99	1.33–5.41	1.32–6.59	0.80–6.01
P-value	<0.001 (0.001)	<0.001 (0.001)	0.004 (0.006)	0.006 (0.009)	0.008 (0.006)	0.125 (0.105)
IL-6R (positive vs negative)						
HR	2.69 (+0.13)	2.15 (+0.06)	2.05 (+0.13)	2.02 (+0.17)	2.27 (+0.21)	1.71 (+0.29)
95% CI	1.27–5.69	1.11–4.18	1.06–3.99	1.01–4.07	0.98–5.27	0.63–4.66
P-value	0.010 (0.007)	0.024 (0.025)	0.033 (0.039)	0.047 (0.066)	0.057 (0.044)	0.294 (0.289)

Abbreviations: CCSS = conditional cancer-specific survival; CI = confidence interval; HR = hazard ratio; IL = interleukin; IL-6R = interleukin-6 receptor; MVI = microvascular invasion. The reduced multivariable models were calculated on the basis of the adjusted survival function for age and gender by each elapsed time point, and were restricted in the variables that considered significant in the full model to be controlled for covariate influence. Bootstrapping with 1000 resamples of the same size of each time point was used.
^aBootstrapped bias of HR is enclosed within parentheses after raw HR value, and bootstrapped P-value for each variable at moment is enclosed within parentheses after raw P-value. Bootstrapped CIs are not shown here.

Table 4. pT-IL-6-IL-6R risk groups and CSS

Patient group	Prognostic group				No. (%)	5-year CSS (%)	10-year CSS (%)
	pN/M	pT	IL-6	IL-6R			
pT-IL-6-IL-6R low risk	pN0 and M0	1–2	–	–	38 (20.2%)	97.1 ± 2.9	87.2 ± 6.0
		1–2	–	+	44 (23.4%)	93.1 ± 3.9	85.3 ± 5.6
		1–2	+	–	23 (12.2%)	90.2 ± 6.6	81.2 ± 10.4
pT-IL-6-IL-6R high risk	pN0 and M0	1–2	+	+	33 (17.6%)	61.9 ± 8.7	47.7 ± 10.0
		3–4	–	–	10 (5.3%)	70.0 ± 14.5	50.0 ± 15.8
		3–4	–	+	14 (7.4%)	64.3 ± 12.8	50.0 ± 13.4
		3–4	+	–	9 (4.8%)	55.6 ± 16.6	41.7 ± 17.3
		3–4	+	+	9 (4.8%)	44.4 ± 16.6	11.1 ± 10.5
Metastatic	pN1 or M1	Any	Any	Any	8 (4.3%)	12.5 ± 11.7	12.5 ± 11.7 ^a

Abbreviations: CSS = cancer-specific survival; IL = interleukin; IL-6R = interleukin-6 receptor.
^aThe largest survival time is censored.

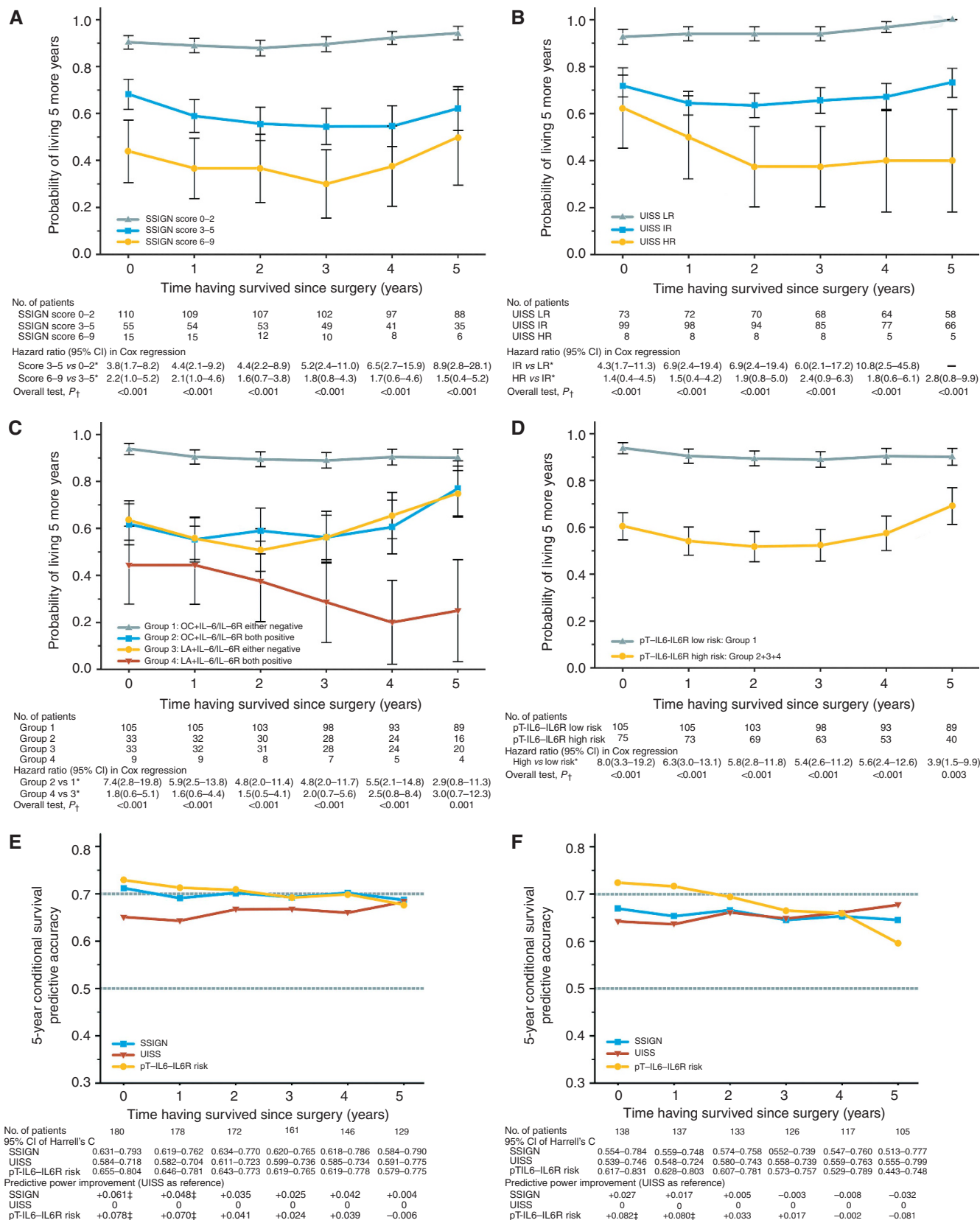


Figure 2. 5-year CCSS for all localised ccRCC patients stratified by (A) SSIGN, (B) UISS, (C) pT-IL6-IL6R risk, (D) pT-IL6-IL6R risk and the over-time discrimination of predictive power between these models (SSIGN, UISS and pT-IL6-IL6R risk) in (E) all population and (F) OC population. Harrell's concordance index (Harrell's C) and 95% CI obtained from 1000 bootstrap resamples was used to present the model's predictive accuracy. *The latter is the referential category. †P-values were obtained from pooled log-rank tests over strata for 5-year CCSS at each time point. ‡Significant in Hanley-McNeil test ($P < 0.05$). HR, high risk; IR, intermediate risk; LR, low risk; UISS, the University of California Los Angeles Integrated Staging System; SSIGN, the stage, size, grade and necrosis.

risk and SSIGN. In OC cohort, C-index of pT-IL-6-IL-6R risk was significantly higher compared with UISS or SSIGN at the beginning (0.724 vs 0.669 or 0.642, respectively), and reached a low of 0.596 by year 5 (lower than SSIGN, C = 0.645, and UISS, C = 0.677).

DISCUSSION

Interleukin-6 is a multifunctional cytokine with well-defined pro- and anti-inflammatory properties. It induces intracellular JAK/STAT or MAPK signalling pathways after binding to its receptor (IL-6R). Although the serum level of IL-6 in healthy humans is extremely low, it is highly and transiently upregulated in nearly all inflammation-associated pathophysiological states, including cancers. Alberti *et al* (2004) reported that IL-6 is produced at high levels by RCC cell lines and could activate the autocrine proliferation (Alberti *et al*, 2004). As IL-6/IL-6R signalling may be involved in the RCC progression, it was speculated that IL-6 and IL-6R could provide some prognostic information for clinical practice. Previous works have indicated the soluble IL-6 concentration before nephrectomy was a prognostic marker for CSS in localised RCC (Hrab *et al*, 2013). However, it should be more useful to assess the intratumoral expression of IL-6 for local tumour prognostication (e.g., detect IL-6 level in resected frozen tumour tissues), as IL-6 is secreted and signalled in an autocrine loop in RCC, and intratumoral IL-6 level should be significantly higher compared with that in plasma, where it preferentially represents the degree of systematic inflammation, but not local tumour progress.

In this study, we analysed the potential prognostic value of IL-6 and IL-6R in relation to 5-year CCSS, which is developed based on time-dependent covariate models. Conditional survival estimates may be more intriguing in clinical practice, especially in post-treatment prognostication, because the anatomical, histological and clinical characteristics acquired at diagnosis are generally a snapshot estimate of survival at the instant, and these factors may become less relevant with patient's survivorship as time goes on.

Our results show that, for patients with OC ccRCC who underwent nephrectomy, concurrence of IL-6- and IL-6R-positive expression in tumour tissue is an unfavorable prognostic factor in the early years. Organ-confined ccRCC patients who positively expressed both IL-6 and IL-6R had 52% probability of surviving an additional 5 years after living 2 years since surgery. This projection was similar with LA patients who had an average of 48% probability (Table 4). Interestingly, the discrimination of CCSS between pT-IL-6-IL-6R high- and low-risk subgroups appeared to fade as the time elapses from year 2, which may be caused by diminishing prognostic capability of IL-6R synchronously. Considering the unique in-series interaction between IL-6 and IL-6R (Figure 1C) and their self-evident affinity among transmembrane signalling, we audaciously speculated that the level of IL-6, rather than IL-6R, might decrease markedly since initial surgery. This is actually consistent with the fluctuating machinery of dynamic IL-6 behaviour in cancer-related chronic inflammation (Wolf *et al*, 2014).

Currently, nephrectomy remains the mainstay of localised RCC treatment, and some molecular biomarkers have been universally used in the management of RCC and had important roles in treatments. A precedent here is the application of IFN- α and IL-2 coupled with first-line targeted agents in novel immunotherapy for selected patients (Ljungberg *et al*, 2015). As some researches have revealed, IL-6 has an important role in inflammatory cancer, and that these pathophysiological situations and events also affect the regulation of IL-6, IL-6 and IL-6R, which could serve as assistant prognostic markers for stratifying ccRCC patients with a high tumour burden to aid their personalised counselling and close follow-up, similar to the pT-IL-6-IL-6R risk model that we showed

in the study, which could implement performance gains over some established prognostic models such as UISS and SSIGN in OC ccRCC. Meanwhile, IL-6/IL-6R serve as important upstream signal controllers of RCC proliferation or metastasis, as well as major communicators between tumours and immune microenvironments; they may be potential therapeutic targets for those high IL-6 level ccRCC patients once we develop a great understanding of their *in vivo* behaviours. As far as we know, the clinical phase II trials of siltuximab (an anti-IL-6 antibody) against tumour-promoting chronic inflammations are in progress, and tocilizumab (a humanised anti-IL-6R antibody) are also available in clinical practice (Nishimoto *et al*, 2009).

At least six different studies have shown that serum IL-6 levels are highly correlated with survival of RCC patients. However, two studies mainly focused on metastatic RCC (Blay *et al*, 1992; Ljungberg *et al*, 1997), another two had small sample size ($n < 30$) (Stadler *et al*, 1992; Yoshida *et al*, 2002) and one failed to assess the independent impact of IL-6 in multivariate analyses (Hrab *et al*, 2013). The final one revealed the correlation between outcome and *in situ* IL-6R presence with limited patients ($n = 38$) (Costes *et al*, 1997). All these detect IL-6 concentration in body fluids and none of them distinguish RCC pathologic variants meticulously. In fact, plasmic IL-6 is extremely sensitive but lack specificity to a particular disease (Wolf *et al*, 2014).

Our study is the first to assess intratumoral expression of IL-6 and IL-6R for localised ccRCC patients, and compare their prognostic power with established prognostic models of RCC. The application of conditional survival analysis also offers more deep-going investigations. However, our results were verified using an internal validation test (i.e., the bootstrap method), whereas a robust external cohort may be comparatively superior. Furthermore, it is difficult to identify the underlying mechanisms through which IL-6/IL-6R signalling regulate the carcinogenesis, progression and metastasis of ccRCC. An immunosuppressive effect on dendritic cells, a proinflammatory role through trans-signalling pathway, a growth factor effect and an epithelial-mesenchymal transition promoter role could all contribute to these observations; there are many works to accomplish before fully understanding the roles of IL-6 in RCC (Cabillic *et al*, 2006; Jones *et al*, 2011; Wolf *et al*, 2014; Zhang *et al*, 2015).

ACKNOWLEDGEMENTS

This study was funded by grants from National Basic Research Program of China (2012CB822104), National Natural Science Foundation of China (31100629, 31270863, 81471621, 81472227), Program for New Century Excellent Talents in University (NCET-13-0146), and Shanghai Rising-Star Program (13QA1400300). All these study sponsors have no roles in the study design, in the collection, analysis and interpretation of data.

CONFLICT OF INTEREST

The authors declare no conflict of interest.

REFERENCES

- Alberti L, Thomachot MC, Bachelot T, Menetrier-Caux C, Puisieux I, Blay JY (2004) IL-6 as an intracrine growth factor for renal carcinoma cell lines. *Int J Cancer* **111**(5): 653–661.
- Blay JY, Negrier S, Combaret V, Attali S, Goillot E, Merrouche Y, Mercatello A, Ravault A, Tourani JM, Moskovtchenko JF, Philip T, Favrot M (1992) Serum level of interleukin 6 as a prognosis factor in metastatic renal cell carcinoma. *Cancer Res* **52**(12): 3317–3322.

- Brookman-May S, May M, Shariat SF, Xylinas E, Stief C, Zigeuner R, Chromecki T, Burger M, Wieland WF, Cindolo L, Schips L, De Cobelli O, Rocco B, De Nunzio C, Feciche B, Truss M, Gilfrich C, Pahernik S, Hohenfellner M, Zastrow S, Wirth MP, Novara G, Carini M, Minervini A, Simeone C, Antonelli A, Mirone V, Longo N, Simonato A, Carmignani G, Ficarra V. Members of the Cp, the Sp (2013) Features associated with recurrence beyond 5 years after nephrectomy and nephron-sparing surgery for renal cell carcinoma: development and internal validation of a risk model (PRELANE score) to predict late recurrence based on a large multicenter database (CORONA/SATURN Project). *Eur Urol* **64**(3): 472–477.
- Cabille F, Bouet-Toussaint F, Toutirais O, Rioux-Leclercq N, Fergelot P, de la Pintiere CT, Genetet N, Patard JJ, Catros-Quemener V (2006) Interleukin-6 and vascular endothelial growth factor release by renal cell carcinoma cells impedes lymphocyte-dendritic cell cross-talk. *Clin Exp Immunol* **146**(3): 518–523.
- Costes V, Liautard J, Picot MC, Robert M, Lequeux N, Brochier J, Baldet P, Rossi JF (1997) Expression of the interleukin 6 receptor in primary renal cell carcinoma. *J Clin Pathol* **50**(10): 835–840.
- Delahunt B, Chevillet JC, Martignoni G, Humphrey PA, Magi-Galluzzi C, McKenney J, Egevad L, Algaba F, Moch H, Grignon DJ, Montironi R, Srigley JR. Members of the IRTF (2013) The International Society of Urological Pathology (ISUP) grading system for renal cell carcinoma and other prognostic parameters. *Am J Surg Pathol* **37**(10): 1490–1504.
- Frank I, Blute ML, Chevillet JC, Lohse CM, Weaver AL, Zincke H (2002) An outcome prediction model for patients with clear cell renal cell carcinoma treated with radical nephrectomy based on tumor stage, size, grade and necrosis: the SSIGN score. *J Urol* **168**(6): 2395–2400.
- Hanley JA, McNeil BJ (1983) A method of comparing the areas under receiver operating characteristic curves derived from the same cases. *Radiology* **148**(3): 839–843.
- Harrell Jr FE, Lee KL, Mark DB (1996) Multivariable prognostic models: issues in developing models, evaluating assumptions and adequacy, and measuring and reducing errors. *Stat Med* **15**(4): 361–387.
- Harshman LC, Xie W, Bjarnason GA, Knox JJ, MacKenzie M, Wood L, Srinivas S, Vaishampayan UN, Tan MH, Rha SY, Donskov F, Agarwal N, Kollmannsberger C, North S, Rini BI, Heng DY, Choueiri TK (2012) Conditional survival of patients with metastatic renal-cell carcinoma treated with VEGF-targeted therapy: a population-based study. *Lancet Oncol* **13**(9): 927–935.
- Heng DY, Xie W, Regan MM, Harshman LC, Bjarnason GA, Vaishampayan UN, Mackenzie M, Wood L, Donskov F, Tan MH, Rha SY, Agarwal N, Kollmannsberger C, Rini BI, Choueiri TK (2013) External validation and comparison with other models of the International Metastatic Renal-Cell Carcinoma Database Consortium prognostic model: a population-based study. *Lancet Oncol* **14**(2): 141–148.
- Hrab M, Olek-Hrab K, Antczak A, Kwias Z, Milecki T (2013) Interleukin-6 (IL-6) and C-reactive protein (CRP) concentration prior to total nephrectomy are prognostic factors in localized renal cell carcinoma (RCC). *Rep Pract Oncol Radiother* **18**(5): 304–309.
- Jones SA, Scheller J, Rose-John S (2011) Therapeutic strategies for the clinical blockade of IL-6/gp130 signaling. *J Clin Invest* **121**(9): 3375–3383.
- Karakiewicz PI, Trinh QD, de la Taille A, Abbou CC, Salomon L, Tostain J, Cindolo L, Artibani W, Ficarra V, Patard JJ (2007) ECOG performance status 0 or 1 and symptom classification do not improve the ability to predict renal cell carcinoma-specific survival. *Eur J Cancer* **43**(6): 1023–1029.
- Kim SP, Alt AL, Weight CJ, Costello BA, Chevillet JC, Lohse C, Allmer C, Leibovich BC (2011) Independent validation of the 2010 American Joint Committee on Cancer TNM classification for renal cell carcinoma: results from a large, single institution cohort. *J Urol* **185**(6): 2035–2039.
- Leibovich BC, Blute ML, Chevillet JC, Lohse CM, Frank I, Kwon ED, Weaver AL, Parker AS, Zincke H (2003) Prediction of progression after radical nephrectomy for patients with clear cell renal cell carcinoma: a stratification tool for prospective clinical trials. *Cancer* **97**(7): 1663–1671.
- Ljungberg B, Bensalah K, Canfield S, Dabestani S, Hofmann F, Hora M, Kuczyk MA, Lam T, Marconi L, Merseburger AS, Mulders P, Powles T, Staehler M, Volpe A, Bex A (2015) EAU Guidelines on Renal Cell Carcinoma: 2014 Update. *Eur Urol* **67**(5): 913–924.
- Ljungberg B, Grankvist K, Rasmuson T (1997) Serum interleukin-6 in relation to acute-phase reactants and survival in patients with renal cell carcinoma. *Eur J Cancer* **33**(11): 1794–1798.
- Negrier S, Perol D, Menetrier-Caux C, Escudier B, Pallardy M, Ravaud A, Douillard JY, Chevreau C, Lasset C, Blay JY, Groupe Francais d'Immunotherapie (2004) Interleukin-6, interleukin-10, and vascular endothelial growth factor in metastatic renal cell carcinoma: prognostic value of interleukin-6 – from the Groupe Francais d'Immunotherapie. *J Clin Oncol* **22**(12): 2371–2378.
- Nishimoto N, Miyasaka N, Yamamoto K, Kawai S, Takeuchi T, Azuma J (2009) Long-term safety and efficacy of tocilizumab, an anti-IL-6 receptor monoclonal antibody, in monotherapy, in patients with rheumatoid arthritis (the STREAM study): evidence of safety and efficacy in a 5-year extension study. *Ann Rheum Dis* **68**(10): 1580–1584.
- Pan D, Xu L, Liu H, Zhang W, Zhu Y, Xu J, Gu J (2015) Interleukin-11 receptor predicts post-operative clinical outcome in patients with early-stage clear-cell renal cell carcinoma. *Jpn J Clin Oncol* **45**(2): 202–209.
- Rini B, Goddard A, Knezevic D, Maddala T, Zhou M, Aydin H, Campbell S, Elson P, Koscielny S, Lopatin M, Svedman C, Martini JF, Williams JA, Verkarre V, Radulescu C, Neuzillet Y, Hemmerle I, Timsit MO, Tsiatis AC, Bonham M, Lebrat T, Mejean A, Escudier B (2015) A 16-gene assay to predict recurrence after surgery in localised renal cell carcinoma: development and validation studies. *Lancet Oncol* **16**(6): 676–685.
- Siegel RL, Miller KD, Jemal A (2015) Cancer statistics, 2015. *CA Cancer J Clin* **65**(1): 5–29.
- Stadler WM, Richards JM, Vogelzang NJ (1992) Serum interleukin-6 levels in metastatic renal cell cancer: correlation with survival but not an independent prognostic indicator. *J Natl Cancer Inst* **84**(23): 1835–1836.
- Tilki D, Nguyen HG, Dall'Era MA, Bertini R, Carballido JA, Chromecki T, Ciancio G, Daneshmand S, Gontero P, Gonzalez J, Haferkamp A, Hohenfellner M, Huang WC, Koppie TM, Lorentz CA, Mandel P, Martinez-Salamanca JI, Master VA, Matloob R, McKiernan JM, Mlynarczyk CM, Montorsi F, Novara G, Pahernik S, Palou J, Pruthi RS, Ramaswamy K, Rodriguez Faba O, Russo P, Shariat SF, Spahn M, Terrone C, Vergho D, Wallen EM, Xylinas E, Zigeuner R, Libertino JA, Evans CP (2014) Impact of histologic subtype on cancer-specific survival in patients with renal cell carcinoma and tumor thrombus. *Eur Urol* **66**(3): 577–583.
- Wolf J, Rose-John S, Garbers C (2014) Interleukin-6 and its receptors: a highly regulated and dynamic system. *Cytokine* **70**(1): 11–20.
- Xu L, Zhu Y, An H, Liu Y, Lin Z, Wang G, Xu J (2014) Clinical significance of tumor-derived IL-1beta and IL-18 in localized renal cell carcinoma: Associations with recurrence and survival. *Urol Oncol* **33**(2): 68.e9–16.
- Yoshida N, Ikemoto S, Narita K, Sugimura K, Wada S, Yasumoto R, Kishimoto T, Nakatani T (2002) Interleukin-6, tumour necrosis factor alpha and interleukin-1beta in patients with renal cell carcinoma. *Br J Cancer* **86**(9): 1396–1400.
- Zamboni BA, Yothers G, Choi M, Fuller CD, Dignam JJ, Raich PC, Thomas Jr CR, O'Connell MJ, Wolmark N, Wang SJ (2010) Conditional survival and the choice of conditioning set for patients with colon cancer: an analysis of NSABP trials C-03 through C-07. *J Clin Oncol* **28**(15): 2544–2548.
- Zhang M, Gong W, Zhang Y, Yang Y, Zhou D, Weng M, Qin Y, Jiang A, Ma F, Quan Z (2015) Expression of interleukin-6 is associated with epithelial–mesenchymal transition and survival rates in gallbladder cancer. *Mol Med Rep* **11**(5): 3539–3546.
- Zisman A, Pantuck AJ, Wieder J, Chao DH, Dorey F, Said JW, deKernion JB, Figlin RA, Beldegrun AS (2002) Risk group assessment and clinical outcome algorithm to predict the natural history of patients with surgically resected renal cell carcinoma. *J Clin Oncol* **20**(23): 4559–4566.

This work is published under the standard license to publish agreement. After 12 months the work will become freely available and the license terms will switch to a Creative Commons Attribution-NonCommercial-Share Alike 4.0 Unported License.

Supplementary Information accompanies this paper on British Journal of Cancer website (<http://www.nature.com/bjc>)