



Linear Peridynamics Fourier Multipliers and Eigenvalues

Bacim Alali¹ · Nathan Albin¹

Received: 15 June 2022 / Accepted: 11 April 2023 / Published online: 12 May 2023
© The Author(s), under exclusive licence to Springer Nature Switzerland AG 2023

Abstract

A characterization for the Fourier multipliers and eigenvalues of linear peridynamic operators is provided. The analysis is presented for state-based peridynamic operators for isotropic homogeneous media in any spatial dimension. We provide explicit formulas for the eigenvalues in terms of the space dimension, the nonlocal parameters, and the material properties. The approach we follow is based on the Fourier multiplier analysis developed by Alali and Albin (Applicable Analysis 2526–2546, 1). The Fourier multipliers of linear peridynamic operators are second-order tensor fields, which are given through integral representations. It is shown that the eigenvalues of the peridynamic operators can be derived directly from the eigenvalues of the Fourier multiplier tensors. We reveal a simple structure for the Fourier multipliers in terms of hypergeometric functions, which allows for providing integral representations as well as hypergeometric representations of the eigenvalues. These representations are utilized to show the convergence of the eigenvalues of linear peridynamics to the eigenvalues of the Navier operator of linear elasticity in the limit of vanishing nonlocality. Moreover, the hypergeometric representation of the eigenvalues is utilized to compute the spectrum of linear peridynamic operators.

Keywords Fourier multipliers · Tensor multipliers · Eigenvalues · Peridynamics

1 Introduction

In this work, we study the Fourier multipliers of linear state-based peridynamic operators. The main goals are to find explicit representations for the multipliers, when the operator is defined on \mathbb{R}^n , and to find explicit representations for the eigenvalues of the peridynamic operator, when it is defined on periodic domains. The formulas that we derive for the Fourier multipliers and the eigenvalues are of two types: nonlocal (integral) representations and representations in terms of hypergeometric functions. As have been demonstrated in [1] and [2], such explicit representations can be exploited to rigorously characterize the behavior of nonlocal operators and develop regularity theory for nonlocal equations, as well as to devise efficient and accurate spectral methods for the numerical solutions of nonlocal equations. The current work focuses on the derivations of these representations,

✉ Bacim Alali
bacimalali@math.ksu.edu

¹ Department of Mathematics, Kansas State University, Manhattan, KS, USA

while the regularity of peridynamic equations and spectral methods for peridynamics based on the approach presented here will be pursued in forthcoming works.

There has been a recent increased interest in spectral methods for peridynamics and nonlocal equations as these methods provide efficient and accurate solvers. One of the features of these spectral solvers is that the nonlocality parameters do not scale with the grid size, thus providing computational accuracy and efficiency [2]. Spectral methods have been developed for nonlocal and peridynamic equations in periodic domain, bounded domains, and for problems on surfaces, as well as problems involving fracture [3–6]. Spectral and Fourier multipliers approaches provide analysis techniques for studying the regularity of solutions of nonlocal equations, see for example [7, 8] and [1]. In [8], a Fourier multipliers approach has been adopted for studying linear peridynamics bond-based model in one and two dimensions. The work in [9] also follows a Fourier multipliers approach to study a fractional Lamé-Navier operator and its connection to state-based peridynamics, and to establish analysis results for this operator and certain associated fractional equations, see also [10].

The approach presented in this work to uncover explicit formulas for the multipliers and the eigenvalues is based on two indirect connections; the first is a connection between the multipliers of the peridynamic operator, which are second-order tensor fields, and the scalar multipliers of the nonlocal Laplace operator. The second connection is between the multipliers of the peridynamic operator, defined on \mathbb{R}^n , and the eigenvalues of the peridynamic operator, when it is defined on periodic domains. Throughout this article, we refer to the Fourier multipliers of the nonlocal Laplacian as the *scalar multipliers*, whereas the *tensor multipliers* refer to the Fourier multipliers of the peridynamic operator.

A brief description of the main steps in our approach and the organization of the article are as follows. The definition of the linear peridynamic operator in \mathbb{R}^n and the specific integral kernels are provided in Sect. 2. In order to find explicit representations in terms of the nonlocality parameters and the space dimension, we focus on integral kernels of the form (1), which can be singular or integrable. However, we emphasize that the results in this work can be generalized to other types of integral kernels. Section 3.1 presents the nonlocal Laplacian and its multipliers given by the integral and hypergeometric representations (9) and (10), respectively. The multipliers of the Navier operator of linear elasticity and the integral formula for the tensor multipliers of the peridynamic operator are derived in Sect. 3.2. Each entry of the $n \times n$ tensor multiplier is written as an integral in \mathbb{R}^n . A key step in our approach is to reveal a simple structure for this tensor. This is accomplished in Sect. 3.3, where we show in Sect. 3.3.2 that the tensor multipliers can be recovered using the derivatives of the scalar multipliers. By combining this relationship with the hypergeometric formula of the scalar multipliers together with the aid of some facts about hypergeometric functions as presented in Sect. 3.3.1, we arrive at a simple structure for the tensor multipliers in terms of hypergeometric functions as demonstrated in Sect. 3.3.3. An immediate consequence of this result is the convergence of the tensor multipliers of the peridynamic operator to the tensor multipliers of the Navier operator for two kinds of local limits. In Sect. 3.3.4, the tensor multiplier at any vector in \mathbb{R}^n is shown to be a real symmetric matrix with n orthonormal eigenvectors and two distinct associated eigenvalues. Using the hypergeometric representation for the tensor multipliers, we derive explicit formulas for these eigenvalues in terms of hypergeometric functions. Using these eigenvalue formulas, we derive integral representations for the eigenvalues in Sect. 3.3.5. In the Appendix, we provide an alternative derivation to the hypergeometric representations of the

tensor multipliers. The presentation is more technical than the one provided in Sect. 3.3 but shows the results for integrable as well as singular integral kernels. In Sect. 4, we consider the peridynamic operator defined for periodic vector-fields. We show how the eigenvector fields and the eigenvalues for the peridynamic operator on periodic domains can be derived from the tensor multipliers’ eigenvectors and eigenvalues.

2 Overview

Linear peridynamic operators defined in a domain $\Omega \subseteq \mathbb{R}^n$ have the form [11]

$$\mathcal{L}\mathbf{u}(x) = \int_{\Omega} C(x, y)(\mathbf{u}(y) - \mathbf{u}(x)) dy,$$

where $C(x, y)$ is a second-order tensor and $\mathbf{u} : \mathbb{R}^n \rightarrow \mathbb{R}^n$ is a vector field. For a homogeneous isotropic solid, the linear operator takes the form

$$\begin{aligned} \mathcal{L}\mathbf{u}(x) &= \rho \int_{\Omega} \frac{\gamma(\|y - x\|)}{\|y - x\|^2} (y - x) \otimes (y - x) (\mathbf{u}(y) - \mathbf{u}(x)) dy \\ &+ \rho' \int_{\Omega} \int_{\Omega} \gamma(\|y - x\|) \gamma(\|z - x\|) (y - x) \otimes (z - x) (\mathbf{u}(z) - \mathbf{u}(x)) dz dy \\ &+ \rho' \int_{\Omega} \int_{\Omega} \gamma(\|y - x\|) \gamma(\|z - y\|) (y - x) \otimes (z - y) (\mathbf{u}(z) - \mathbf{u}(y)) dz dy, \end{aligned}$$

where γ is a scalar field, and ρ and ρ' are scaling constants that include the material properties. Taking $\Omega = \mathbb{R}^n$, and due to symmetry, the operator reduces to

$$\begin{aligned} \mathcal{L}\mathbf{u}(x) &= \rho \int_{\mathbb{R}^n} \frac{\gamma(\|y - x\|)}{\|y - x\|^2} (y - x) \otimes (y - x) (\mathbf{u}(y) - \mathbf{u}(x)) dy \\ &+ \rho' \int_{\mathbb{R}^n} \int_{\mathbb{R}^n} \gamma(\|y - x\|) \gamma(\|z - y\|) (y - x) \otimes (z - y) \mathbf{u}(z) dz dy. \end{aligned}$$

In this work, we focus on radially symmetric kernels with compact support of the form

$$\gamma(\|y - x\|) = c^{\delta, \beta} \frac{1}{\|y - x\|^{\beta}} \chi_{B_{\delta}(x)}(y), \tag{1}$$

where $c^{\delta, \beta}$ is given by (3), $\chi_{B_{\delta}(x)}$ is the indicator function of the ball of radius $\delta > 0$ centered at x , and the exponent satisfies $\beta < n + 2$. In this case, the linear peridynamic operator, parametrized by the horizon (nonlocality parameter) δ and the integral kernel exponent β , can be written as

$$\begin{aligned} \mathcal{L}^{\delta, \beta} \mathbf{u}(x) &= (n + 2) \mu c^{\delta, \beta} \int_{B_{\delta}(x)} \frac{(y - x) \otimes (y - x)}{\|y - x\|^{\beta+2}} (\mathbf{u}(y) - \mathbf{u}(x)) dy \\ &+ (\lambda^* - \mu) \frac{(c^{\delta, \beta})^2}{4} \int_{B_{\delta}(x)} \int_{B_{\delta}(y)} \frac{y - x}{\|y - x\|^{\beta}} \otimes \frac{z - y}{\|z - y\|^{\beta}} \mathbf{u}(z) dz dy, \end{aligned} \tag{2}$$

where μ and λ^* are Lamé parameters, and the scaling constant $c^{\delta, \beta}$ is defined by

$$\begin{aligned}
 c^{\delta,\beta} &:= \left(\frac{1}{2n} \int_{B_\delta(0)} \frac{\|w\|^2}{\|w\|^\beta} dw \right)^{-1}, \\
 &= \frac{2(n+2-\beta)\Gamma\left(\frac{n}{2}+1\right)}{\pi^{n/2}\delta^{n+2-\beta}}.
 \end{aligned}
 \tag{3}$$

Remark 1 Note that the integral in (3) is only defined for $\beta < n + 2$. However, the last expression in (3) can be used to define $c^{\delta,\beta}$ for larger β .

Remark 2 The second Lamé parameter is usually denoted by λ , but we choose to use λ^* instead in order to keep λ to denote an eigenvalue.

It is convenient to use the following decomposition of $\mathcal{L}^{\delta,\beta}$

$$\mathcal{L}^{\delta,\beta} = \mathcal{L}_b + \mathcal{L}_s,$$

where, after changing variables,

$$\mathcal{L}_b \mathbf{u}(x) = (n+2)\mu c^{\delta,\beta} \int_{B_\delta(0)} \frac{w \otimes w}{\|w\|^{\beta+2}} (\mathbf{u}(x+w) - \mathbf{u}(x)) dw,
 \tag{4}$$

and

$$\mathcal{L}_s \mathbf{u}(x) = (\lambda^* - \mu) \frac{(c^{\delta,\beta})^2}{4} \int_{B_\delta(0)} \int_{B_\delta(0)} \frac{w}{\|w\|^\beta} \otimes \frac{q}{\|q\|^\beta} \mathbf{u}(x+q+w) dq dw.
 \tag{5}$$

We note that \mathcal{L}_b is the linear operator for bond-based peridynamics.

We denote by \mathcal{N} the Navier operator of linear elasticity. For a homogeneous isotropic medium, it is given by

$$\mathcal{N}\mathbf{u} = (\lambda^* + \mu)\nabla(\nabla \cdot \mathbf{u}) + \mu\Delta\mathbf{u}.
 \tag{6}$$

3 Fourier Multipliers

3.1 Multipliers for the Nonlocal Laplacian

For scalar fields $u : \mathbb{R}^n \rightarrow \mathbb{R}$, the analogue to the peridynamic operator $\mathcal{L}^{\delta,\beta}$ is the nonlocal Laplacian, which in this case is given by

$$L^{\delta,\beta} u(x) = c^{\delta,\beta} \int_{B_\delta(x)} \frac{u(y) - u(x)}{\|y-x\|^\beta} dy,
 \tag{7}$$

with $c^{\delta,\beta}$ given by (3).

The Fourier multipliers for the nonlocal Laplacian in (7) have been studied in [1], in which the multiplier $m^{\delta,\beta}$ is defined through the Fourier transform by

$$L^{\delta,\beta}u(x) = \frac{1}{(2\pi)^n} \int_{\mathbb{R}^n} m^{\delta,\beta}(v)\widehat{u}(v)e^{iv\cdot x} dv, \tag{8}$$

where $m^{\delta,\beta}$ has the integral representation

$$m^{\delta,\beta}(v) = c^{\delta,\beta} \int_{B_\delta(0)} \frac{\cos(v \cdot w) - 1}{\|w\|^\beta} dw. \tag{9}$$

The hypergeometric representation of the multipliers is provided by

$$m^{\delta,\beta}(v) = -\|v\|^2 {}_2F_3\left(1, \frac{n+2-\beta}{2}; 2, \frac{n+2}{2}, \frac{n+4-\beta}{2}; -\frac{1}{4}\|v\|^2\delta^2\right). \tag{10}$$

3.2 Integral Representations for the Peridynamic Multipliers

In this section, we extend the approach developed in [1] for the nonlocal Laplacian $L^{\delta,\beta}$ in (7) to the peridynamic operator $\mathcal{L}^{\delta,\beta}$ in (2). We begin by deriving integral formulas for the Fourier multipliers of $\mathcal{L}^{\delta,\beta}$. Express \mathbf{u} through its Fourier transform as

$$\mathbf{u}(x) = \frac{1}{(2\pi)^n} \int_{\mathbb{R}^n} \widehat{\mathbf{u}}(v)e^{iv\cdot x} dv.$$

Since the definition of $\mathcal{L}^{\delta,\beta}$ can be extended to the space of tempered distributions through the multipliers derived below, it is sufficient to assume that \mathbf{u} is a Schwartz vector field. We compute the multipliers for \mathcal{L}_b and \mathcal{L}_s , separately. Applying \mathcal{L}_b shows that

$$\begin{aligned} \mathcal{L}_b\mathbf{u}(x) &= (n+2)\mu c^{\delta,\beta} \int_{B_\delta(0)} \frac{w \otimes w}{\|w\|^{\beta+2}} (\mathbf{u}(x+w) - \mathbf{u}(x)) dw, \\ &= \frac{1}{(2\pi)^n} \int_{\mathbb{R}^n} \left[(n+2)\mu c^{\delta,\beta} \int_{B_\delta(0)} \frac{w \otimes w}{\|w\|^{\beta+2}} (e^{iv\cdot w} - 1) dw \right] \widehat{\mathbf{u}}(v)e^{iv\cdot x} dv, \end{aligned}$$

providing the representation

$$\mathcal{L}_b\mathbf{u}(x) = \frac{1}{(2\pi)^n} \int_{\mathbb{R}^n} M_b(v)\widehat{\mathbf{u}}(v)e^{iv\cdot x} dv, \tag{11}$$

where

$$\begin{aligned} M_b(v) &= (n+2)\mu c^{\delta,\beta} \int_{B_\delta(0)} \frac{w \otimes w}{\|w\|^{\beta+2}} (e^{iv\cdot w} - 1) dw \\ &= (n+2)\mu c^{\delta,\beta} \int_{B_\delta(0)} \frac{w \otimes w}{\|w\|^{\beta+2}} (\cos(v \cdot w) - 1) dw. \end{aligned} \tag{12}$$

Similarly, we compute the multipliers of \mathcal{L}_s ,

$$\begin{aligned} \mathcal{L}_s\mathbf{u}(x) &= (\lambda^* - \mu) \frac{(c^{\delta,\beta})^2}{4} \int_{B_\delta(0)} \int_{B_\delta(0)} \frac{w}{\|w\|^\beta} \otimes \frac{q}{\|q\|^\beta} \mathbf{u}(x+q+w) dqdw, \\ &= \frac{1}{(2\pi)^n} \int_{\mathbb{R}^n} \left[(\lambda^* - \mu) \frac{(c^{\delta,\beta})^2}{4} \int_{B_\delta(0)} \frac{w}{\|w\|^\beta} e^{iv\cdot w} dw \otimes \int_{B_\delta(0)} \frac{q}{\|q\|^\beta} e^{iv\cdot q} dq \right] \widehat{\mathbf{u}}(v)e^{iv\cdot x} dv, \end{aligned}$$

providing the representation

$$\mathcal{L}_s \mathbf{u}(x) = \frac{1}{(2\pi)^n} \int_{\mathbb{R}^n} M_s(\nu) \widehat{\mathbf{u}}(\nu) e^{i\nu \cdot x} d\nu, \tag{13}$$

where

$$\begin{aligned} M_s(\nu) &= (\lambda^* - \mu) \frac{(c^{\delta,\beta})^2}{4} \left(\int_{B_\delta(0)} \frac{w}{\|w\|^\beta} e^{i\nu \cdot w} dw \right) \otimes \left(\int_{B_\delta(0)} \frac{w}{\|w\|^\beta} e^{i\nu \cdot w} dw \right) \\ &= -(\lambda^* - \mu) \frac{(c^{\delta,\beta})^2}{4} \left(\int_{B_\delta(0)} \frac{w}{\|w\|^\beta} \sin(\nu \cdot w) dw \right) \otimes \left(\int_{B_\delta(0)} \frac{w}{\|w\|^\beta} \sin(\nu \cdot w) dw \right). \end{aligned} \tag{14}$$

Combining (12) and (14), we obtain the multipliers for $\mathcal{L}^{\delta,\beta}$,

$$M^{\delta,\beta} = M_b + M_s, \tag{15}$$

which satisfy

$$\widehat{\mathcal{L}^{\delta,\beta} \mathbf{u}} = M^{\delta,\beta} \widehat{\mathbf{u}}.$$

The following summarizes the results of this subsection.

Proposition 1 *The Fourier multipliers $M^{\delta,\beta}$ of the linear peridynamic operator $\mathcal{L}^{\delta,\beta}$ in (2) are characterized through integral representations as given by (15), (12), and (14).*

We note that the Fourier multipliers of \mathcal{N} , the Navier operator given in (6), are similarly defined by

$$\widehat{\mathcal{N} \mathbf{u}} = M^{\mathcal{N}} \widehat{\mathbf{u}},$$

and can be shown to be given explicitly by

$$M^{\mathcal{N}}(\nu) = -(\lambda^* + \mu)\nu \otimes \nu - \mu\|\nu\|^2 I, \tag{16}$$

where I is the identity matrix.

3.3 Peridynamic Multipliers: Structure and Hypergeometric Representations

We emphasize that the multipliers of linear peridynamics, given by (12),(14), and (15), are second-order tensor fields. In this section, we reveal a simple and explicit structure for the matrix $M^{\delta,\beta}(\nu)$ in terms of ν and the derivatives of the scalar multipliers (multipliers of the nonlocal Laplacian) $m^{\delta,\beta}(\nu)$ given by (9) or, equivalently, by (10).

3.3.1 Hypergeometric Formulas

In this section, we derive and present hypergeometric formulas that will be useful in the subsequent sections. Let $\mathbf{a} = (a_1, a_2, \dots, a_p)$ and $\mathbf{b} = (b_1, b_2, \dots, b_q)$ be two vectors of coefficients. The generalized hypergeometric function ${}_pF_q$ with parameters \mathbf{a} and \mathbf{b} is defined as

$${}_pF_q(\mathbf{a}; \mathbf{b}; z) := \sum_{k=0}^{\infty} \frac{(\mathbf{a})_k z^k}{(\mathbf{b})_k k!}.$$

Here, the notation $(\mathbf{a})_k$ represents the product

$$(\mathbf{a})_k = (a_1)_k (a_2)_k \cdots (a_p)_k,$$

where $(a)_k$ is the Pochhammer symbol

$$(a)_k = \frac{\Gamma(a+k)}{\Gamma(a)} = a(a+1)(a+2) \cdots (a+k-1).$$

We also define the notation

$$\prod \mathbf{a} = a_1 a_2 \cdots a_p \quad \text{and} \quad \mathbf{a} + c = (a_1 + c, a_2 + c, \dots, a_p + c),$$

and recall the following useful facts about the Pochhammer symbol.

$$(\mathbf{a})_{k+1} = a(a+1) \cdots (a+k-1)(a+k) = a(a+1)_k, \tag{17}$$

and

$$\frac{(a+1)_k}{(a)_k} = \frac{a+k}{a}. \tag{18}$$

In light of (10), we consider the derivatives of a function of the form

$$f(z) = z \cdot {}_pF_q(\mathbf{a}; \mathbf{b}; z) = z \sum_{k=0}^{\infty} \frac{(\mathbf{a})_k z^k}{(\mathbf{b})_k k!} = \sum_{k=0}^{\infty} \frac{(\mathbf{a})_k z^{k+1}}{(\mathbf{b})_k k!}. \tag{19}$$

Lemma 1 *Let $f(x)$ have the form (19). Then,*

$$f'(z) = {}_{p+1}F_{q+1}(\mathbf{a}'; \mathbf{b}'; z) \tag{20}$$

and

$$f''(z) = \frac{\prod \mathbf{a}'}{\prod \mathbf{b}'} {}_{p+1}F_{q+1}(\mathbf{a}' + 1; \mathbf{b}' + 1; z), \tag{21}$$

where

$$\mathbf{a}' = (2, a_1, \dots, a_p) \quad \text{and} \quad \mathbf{b}' = (1, b_1, \dots, b_q).$$

Proof Taking the term-wise first derivative and applying (18) shows that

$$f'(z) = \sum_{k=0}^{\infty} \frac{(\mathbf{a})_k (k+1) z^k}{(\mathbf{b})_k k!} = \sum_{k=0}^{\infty} \frac{(\mathbf{a})_k (2)_k z^k}{(\mathbf{b})_k (1)_k k!} = {}_{p+1}F_{q+1}(\mathbf{a}'; \mathbf{b}'; z),$$

Taking a term-wise derivative once again, then reindexing and using (17) yields

$$\begin{aligned}
 f''(z) &= \sum_{k=1}^{\infty} \frac{(\mathbf{a}')_k k}{(\mathbf{b}')_k} \frac{z^{k-1}}{k!} = \sum_{k=0}^{\infty} \frac{(\mathbf{a}')_{k+1}(k+1)}{(\mathbf{b}')_{k+1}} \frac{z^k}{(k+1)!} \\
 &= \frac{\prod \mathbf{a}'}{\prod \mathbf{b}'} \sum_{k=0}^{\infty} \frac{(\mathbf{a}' + 1)_k}{(\mathbf{b}' + 1)_k} \frac{z^k}{k!} = \frac{\prod \mathbf{a}'}{\prod \mathbf{b}'} {}_{p+1}F_{q+1}(\mathbf{a}' + 1; \mathbf{b}' + 1; z).
 \end{aligned}$$

□

Two additional formulas we shall use are found in the following lemmas.

Lemma 2 For any choice of coefficients,

$${}_pF_q(\mathbf{a}; \mathbf{b}; z) - 1 = \frac{\prod \mathbf{a}}{\prod \mathbf{b}} z \cdot {}_{p+1}F_{q+1}(1, \mathbf{a} + 1; 2, \mathbf{b} + 1; z). \tag{22}$$

Proof This is again found by term-wise differentiation, reindexing, and applying (17).

$$\begin{aligned}
 {}_pF_q(\mathbf{a}; \mathbf{b}; z) - 1 &= \sum_{k=1}^{\infty} \frac{(\mathbf{a})_k}{(\mathbf{b})_k} \cdot \frac{z^k}{k!} = \sum_{k=0}^{\infty} \frac{(\mathbf{a})_{k+1}}{(\mathbf{b})_{k+1}} \cdot \frac{z^{k+1}}{(k+1)!} \\
 &= \frac{\prod \mathbf{a}}{\prod \mathbf{b}} z \sum_{k=0}^{\infty} \frac{(\mathbf{a} + 1)_k (1)_k}{(\mathbf{b} + 1)_k (2)_k} \cdot \frac{z^k}{k!}.
 \end{aligned}$$

Lemma 3 For any choice of hypergeometric coefficients and for any numbers c and d ,

$${}_c{}_{p+1}F_{q+1}(1, \mathbf{a}; 2, \mathbf{b}; z) + d {}_pF_q(\mathbf{a}; \mathbf{b}; z) = (c + d) {}_{p+2}F_{q+2}\left(1, \frac{c + 2d}{d}, \mathbf{a}; 2, \frac{c + d}{d}, \mathbf{b}; z\right). \tag{23}$$

Proof This can be seen by term-wise addition and using (18):

$$\begin{aligned}
 {}_c{}_{p+1}F_{q+1}(1, \mathbf{a}; 2, \mathbf{b}; z) + d {}_pF_q(\mathbf{a}; \mathbf{b}; z) &= \sum_{k=0}^{\infty} \left(\frac{c(\mathbf{a})_k (1)_k}{(\mathbf{b})_k (2)_k} + \frac{d(\mathbf{a})_k}{(\mathbf{b})_k} \right) \frac{z^k}{k!} \\
 &= \sum_{k=0}^{\infty} \left(\frac{c + dk + d}{k + 1} \right) \frac{(\mathbf{a})_k}{(\mathbf{b})_k} \frac{z^k}{k!} \\
 &= d \sum_{k=0}^{\infty} \frac{k + \frac{c+d}{d}}{k + 1} \frac{(\mathbf{a})_k}{(\mathbf{b})_k} \frac{z^k}{k!} \\
 &= (c + d) \sum_{k=0}^{\infty} \frac{\left(\frac{c+2d}{d}\right)_k (1)_k}{\left(\frac{c+d}{d}\right)_k (2)_k} \frac{(\mathbf{a})_k}{(\mathbf{b})_k} \frac{z^k}{k!}.
 \end{aligned}$$

□

3.3.2 Derivatives of the Scalar Multipliers

In this section, we show how the tensor multipliers $M^{\delta, \beta}$, and in particular M_b and M_s , can be recognized in terms of the derivatives of the scalar multipliers $m^{\delta, \beta}$. Here we present an intuitive approach that exposes the connection between the scalar multipliers and the

tensor multipliers. In doing so, we focus on the derivation rather than specific integrability requirements on β ; some integrals need to be understood in a principal value sense. The [Appendix](#) presents an alternative, but more technical, approach that shows that the results are valid for all values of $\beta < n + 2$.

Differentiating $m^{\delta,\beta}$ in (9) with respect to v_i shows that

$$\frac{\partial}{\partial v_i} m^{\delta,\beta}(v) = c^{\delta,\beta} \int_{B_\delta(0)} \frac{-w_i \sin(v \cdot w)}{\|w\|^\beta} dw. \tag{24}$$

Substituting this into (14) yields the formula

$$(M_s(v))_{ij} = -\frac{\lambda^* - \mu}{4} \frac{\partial}{\partial v_i} m^{\delta,\beta}(v) \frac{\partial}{\partial v_j} m^{\delta,\beta}(v). \tag{25}$$

Differentiating a second time in (24) (and replacing β by $\beta + 2$) yields

$$\frac{\partial^2}{\partial v_i \partial v_j} m^{\delta,\beta+2}(v) = c^{\delta,\beta+2} \int_{B_\delta(0)} \frac{-w_i w_j \cos(v \cdot w)}{\|w\|^{\beta+2}} dw, \tag{26}$$

which implies that

$$\int_{B_\delta(0)} \frac{w_i w_j \cos(v \cdot w)}{\|w\|^{\beta+2}} dw = -(c^{\delta,\beta+2})^{-1} \frac{\partial^2}{\partial v_i \partial v_j} m^{\delta,\beta+2}(v).$$

Moreover,

$$\int_{B_\delta(0)} \frac{w_i w_j}{\|w\|^{\beta+2}} dw = \delta_{ij} \int_{B_\delta(0)} \frac{w_i^2}{\|w\|^{\beta+2}} dw = 2(c^{\delta,\beta+2})^{-1} \delta_{ij}. \tag{27}$$

Substituting these last two formulas into (12) shows that

$$(M_b(v))_{ij} = -\frac{(n+2)\mu c^{\delta,\beta}}{c^{\delta,\beta+2}} \left(\frac{\partial^2}{\partial v_i \partial v_j} m^{\delta,\beta+2}(v) + 2\delta_{ij} \right). \tag{28}$$

The scalar multipliers $m^{\delta,\beta}$ can be written as

$$\begin{aligned} m^{\delta,\beta}(v) &= -\|v\|^2 {}_2F_3 \left(1, \frac{n+2-\beta}{2}; 2, \frac{n+2}{2}, \frac{n+4-\beta}{2}; -\frac{1}{4}\|v\|^2 \delta^2 \right) \\ &= \frac{4}{\delta^2} \left(-\frac{1}{4}\|v\|^2 \delta^2 \right) {}_2F_3 \left(1, \frac{n+2-\beta}{2}; 2, \frac{n+2}{2}, \frac{n+4-\beta}{2}; -\frac{1}{4}\|v\|^2 \delta^2 \right) \\ &= \frac{4}{\delta^2} f \left(-\frac{1}{4}\|v\|^2 \delta^2 \right) \end{aligned} \tag{29}$$

where f has the form (19) with $p = 2, q = 3$, and coefficients \mathbf{a} and \mathbf{b} defined to match (29). Differentiating once shows that

$$\frac{\partial}{\partial v_i} m^{\delta,\beta}(v) = \frac{4}{\delta^2} f' \left(-\frac{1}{4}\|v\|^2 \delta^2 \right) \cdot \left(-\frac{1}{2} \delta^2 v_i \right) = -2f' \left(-\frac{1}{4}\|v\|^2 \delta^2 \right) v_i. \tag{30}$$

Differentiating a second time shows that

$$\begin{aligned} \frac{\partial^2}{\partial v_i \partial v_j} m^{\delta, \beta}(v) &= -2f' \left(-\frac{1}{4} \|v\|^2 \delta^2 \right) \delta_{ij} - 2f'' \left(-\frac{1}{4} \|v\|^2 \delta^2 \right) v_i \cdot \left(-\frac{1}{2} \delta^2 v_j \right) \\ &= -2f' \left(-\frac{1}{4} \|v\|^2 \delta^2 \right) \delta_{ij} + \delta^2 f'' \left(-\frac{1}{4} \|v\|^2 \delta^2 \right) v_i v_j. \end{aligned} \tag{31}$$

The results of this subsection are summarized by the following.

Proposition 2 *The tensor multipliers M_b and M_s can be represented in terms of the gradients of the scalar multipliers $m^{\delta, \beta}$ as*

$$\begin{aligned} M_b(v) &= -\frac{(n+2)\mu c^{\delta, \beta}}{c^{\delta, \beta+2}} (\nabla \nabla m^{\delta, \beta+2}(v) + 2I), \\ &= -\frac{(n+2)\mu c^{\delta, \beta}}{c^{\delta, \beta+2}} \left(\delta^2 f'' \left(-\frac{1}{4} \|v\|^2 \delta^2 \right) v \otimes v + \left(2 - 2f' \left(-\frac{1}{4} \|v\|^2 \delta^2 \right) \right) I \right), \end{aligned}$$

where f has the form (19) with $p = 2$, $q = 3$, and coefficients $\mathbf{a} = \left(1, \frac{n-\beta}{2} \right)$ and $\mathbf{b} = \left(2, \frac{n+2}{2}, \frac{n+2-\beta}{2} \right)$, and,

$$\begin{aligned} M_s(v) &= -\frac{\lambda^* - \mu}{4} \nabla m^{\delta, \beta}(v) \otimes \nabla m^{\delta, \beta}(v), \\ &= -(\lambda^* - \mu) \left(f' \left(-\frac{1}{4} \|v\|^2 \delta^2 \right) \right)^2 v \otimes v. \end{aligned}$$

where f has the form (19) with $p = 2$, $q = 3$ and coefficients $\mathbf{a} = \left(1, \frac{n+2-\beta}{2} \right)$ and $\mathbf{b} = \left(2, \frac{n+2}{2}, \frac{n+4-\beta}{2} \right)$.

This result together with the formulas derived in Sect. 3.3.1 allows us to express the tensor multipliers as hypergeometric functions.

3.3.3 The Tensor Multipliers: Hypergeometric Representations

In this section, we provide a simple and explicit form for the tensor multipliers $M_b(v)$ and $M_s(v)$.

Equations (25) and (30) and Lemma 1 show that $M_s(v)$ is a rank-one symmetric matrix of the form

$$M_s(v) = \alpha_s(v) v \otimes v, \tag{32}$$

with

$$\begin{aligned} \alpha_s(v) &= -\frac{\lambda^* - \mu}{4} \left(-2f' \left(-\frac{1}{4} \|v\|^2 \delta^2 \right) \right)^2 \\ &= -(\lambda^* - \mu) \left(f' \left(-\frac{1}{4} \|v\|^2 \delta^2 \right) \right)^2 \\ &= -(\lambda^* - \mu)_3 F_4 \left(1, 2, \frac{n+2-\beta}{2}; 1, 2, \frac{n+2}{2}, \frac{n+4-\beta}{2}; -\frac{1}{4} \|v\|^2 \delta^2 \right)^2 \tag{33} \\ &= -(\lambda^* - \mu)_1 F_2 \left(\frac{n+2-\beta}{2}; \frac{n+2}{2}, \frac{n+4-\beta}{2}; -\frac{1}{4} \|v\|^2 \delta^2 \right)^2. \end{aligned}$$

Equations (28) and (31) and Lemma 1 show that $M_b(v)$ is a symmetric matrix of the form

$$M_b(v) = \alpha_{b1}(v)I + \alpha_{b2}(v)v \otimes v. \tag{34}$$

The coefficient of the identity matrix is (keeping in mind that this time we are differentiating $m^{\delta, \beta+2}$),

$$\begin{aligned} \alpha_{b1}(v) &= -\frac{(n+2)\mu c^{\delta, \beta}}{c^{\delta, \beta+2}} \left(2 - 2f' \left(-\frac{1}{4} \|v\|^2 \delta^2 \right) \right) \\ &= \frac{2(n+2)\mu c^{\delta, \beta}}{c^{\delta, \beta+2}} \left({}_3F_4 \left(1, 2, \frac{n-\beta}{2}; 1, 2, \frac{n+2}{2}, \frac{n+2-\beta}{2}; -\frac{1}{4} \|v\|^2 \delta^2 \right) - 1 \right) \\ &= \frac{2(n+2)\mu c^{\delta, \beta}}{c^{\delta, \beta+2}} \left({}_1F_2 \left(\frac{n-\beta}{2}; \frac{n+2}{2}, \frac{n+2-\beta}{2}; -\frac{1}{4} \|v\|^2 \delta^2 \right) - 1 \right). \end{aligned} \tag{35}$$

Applying Lemma 2 simplifies this expression to show that

$$\begin{aligned} \alpha_{b1}(v) &= \frac{2(n+2)\mu c^{\delta, \beta}}{c^{\delta, \beta+2}} \left(\frac{2(n-\beta)}{(n+2)(n+2-\beta)} \right) \left(-\frac{1}{4} \|v\|^2 \delta^2 \right) \\ &\quad \times {}_2F_3 \left(1, \frac{n+2-\beta}{2}; 2, \frac{n+4}{2}, \frac{n+4-\beta}{2}; -\frac{1}{4} \|v\|^2 \delta^2 \right) \\ &= -\mu \|v\|^2 {}_2F_3 \left(1, \frac{n+2-\beta}{2}; 2, \frac{n+4}{2}, \frac{n+4-\beta}{2}; -\frac{1}{4} \|v\|^2 \delta^2 \right). \end{aligned} \tag{36}$$

The other coefficient can be computed as

$$\begin{aligned} \alpha_{b2}(v) &= -\frac{(n+2)\mu c^{\delta, \beta}}{c^{\delta, \beta+2}} \delta^2 f'' \left(-\frac{1}{4} \|v\|^2 \delta^2 \right) \\ &= -\frac{(n+2)\mu c^{\delta, \beta}}{c^{\delta, \beta+2}} \left(\frac{2(n-\beta)}{(n+2)(n+2-\beta)} \right) \delta^2 \\ &\quad \times {}_3F_4 \left(2, 3, \frac{n+2-\beta}{2}; 2, 3, \frac{n+4}{2}, \frac{n+4-\beta}{2}; -\frac{1}{4} \|v\|^2 \delta^2 \right) \\ &= -2\mu {}_1F_2 \left(\frac{n+2-\beta}{2}; \frac{n+4}{2}, \frac{n+4-\beta}{2}; -\frac{1}{4} \|v\|^2 \delta^2 \right). \end{aligned} \tag{37}$$

It is interesting to see how these formulas combine to provide a formula for the trace of the tensor M_b . Since we know all eigenvalues of M_b , using (32)–(37), we can compute the trace as

$$\begin{aligned} \text{trace } M_b(v) &= n\alpha_{b1} + \|v\|^2 \alpha_{b2} \\ &= -n\mu \|v\|^2 {}_2F_3 \left(1, \frac{n+2-\beta}{2}; 2, \frac{n+4}{2}, \frac{n+4-\beta}{2}; -\frac{1}{4} \|v\|^2 \delta^2 \right) \\ &\quad - 2\mu \|v\|^2 {}_1F_2 \left(\frac{n+2-\beta}{2}; \frac{n+4}{2}, \frac{n+4-\beta}{2}; -\frac{1}{4} \|v\|^2 \delta^2 \right). \end{aligned}$$

Applying Lemma 3, cancelling the repeated $(n+4)/2$ term from the hypergeometric series coefficients, and then applying (10) shows that

$$\begin{aligned} \text{trace } M_b(v) &= -(n + 2)\mu \|v\|^2 {}_3F_4\left(1, \frac{n + 4}{2}, \frac{n + 2 - \beta}{2}; 2, \frac{n + 2}{2}, \frac{n + 4}{2}, \frac{n + 4 - \beta}{2}; -\frac{1}{4}\|v\|^2\delta^2\right) \\ &= -(n + 2)\mu \|v\|^2 {}_2F_3\left(1, \frac{n + 2 - \beta}{2}; 2, \frac{n + 2}{2}, \frac{n + 4 - \beta}{2}; -\frac{1}{4}\|v\|^2\delta^2\right) \\ &= (n + 2)\mu m^{\delta, \beta}(v). \end{aligned}$$

This same formula can also be derived directly from (12), since

$$\frac{\text{trace}(w \otimes w)}{\|w\|^{\beta+2}}(\cos(v \cdot w) - 1) = \frac{\cos(v \cdot w) - 1}{\|w\|^\beta},$$

yielding the integrand in (10).

The main results of this subsection are summarized as follows.

Proposition 3 *The tensor multipliers M_b and M_s have the following hypergeometric representations*

$$\begin{aligned} M_b(v) &= -\mu \|v\|^2 {}_2F_3\left(1, \frac{n + 2 - \beta}{2}; 2, \frac{n + 4}{2}, \frac{n + 4 - \beta}{2}; -\frac{1}{4}\|v\|^2\delta^2\right) I \\ &\quad - 2\mu {}_1F_2\left(\frac{n + 2 - \beta}{2}; \frac{n + 4}{2}, \frac{n + 4 - \beta}{2}; -\frac{1}{4}\|v\|^2\delta^2\right) v \otimes v, \end{aligned}$$

and

$$M_s(v) = -(\lambda^* - \mu) {}_1F_2\left(\frac{n + 2 - \beta}{2}; \frac{n + 2}{2}, \frac{n + 4 - \beta}{2}; -\frac{1}{4}\|v\|^2\delta^2\right)^2 v \otimes v.$$

An immediate consequence of this result is the convergence of the multipliers of $\mathcal{L}^{\delta, \beta}$ to the multipliers of \mathcal{N} in the limits as $\delta \rightarrow 0$ or as $\beta \rightarrow n + 2$.

Proposition 4 *Let $\beta \leq n + 2$. Then,*

$$\begin{aligned} \lim_{\delta \rightarrow 0^+} M_b(v) &= -\mu \|v\|^2 I - 2\mu v \otimes v, \\ \lim_{\delta \rightarrow 0^+} M_s(v) &= -(\lambda^* - \mu) v \otimes v, \\ \lim_{\delta \rightarrow 0^+} M^{\delta, \beta}(v) &= -(\lambda^* + \mu)v \otimes v - \mu \|v\|^2 I = M^{\mathcal{N}}(v). \end{aligned}$$

Moreover, let $\delta > 0$. Then,

$$\begin{aligned} \lim_{\beta \rightarrow n+2^-} M_b(v) &= -\mu \|v\|^2 I - 2\mu v \otimes v, \\ \lim_{\beta \rightarrow n+2^-} M_s(v) &= -(\lambda^* - \mu) v \otimes v, \\ \lim_{\beta \rightarrow n+2^-} M^{\delta, \beta}(v) &= -(\lambda^* + \mu)v \otimes v - \mu \|v\|^2 I = M^{\mathcal{N}}(v). \end{aligned}$$

Proof This result follows from the fact the hypergeometric functions in Proposition 3 are equal to 1 under the considered limits. □

Remark 3 The same results hold true for the limit from above $\beta \rightarrow n + 2^+$.

3.3.4 Eigenvalues of the Tensor Multipliers

The form of the multiplier $M^{\delta,\beta}(\nu)$ is found through (32) and (34),

$$M^{\delta,\beta}(\nu) = \alpha_{b1}(\nu)I + (\alpha_{b2}(\nu) + \alpha_s(\nu))\nu \otimes \nu, \tag{38}$$

where α_{b1} , α_{b2} , and α_s are given by (36), (37), and (33), respectively. This implies that $M^{\delta,\beta}$ is a real symmetric matrix. Moreover, ν is an eigenvector of $M^{\delta,\beta}(\nu)$,

$$M^{\delta,\beta}(\nu)\nu = \lambda_1(\nu)\nu, \tag{39}$$

where

$$\lambda_1(\nu) = \alpha_{b1}(\nu) + (\alpha_{b2}(\nu) + \alpha_s(\nu))\|\nu\|^2.$$

Using (33), (36), and (37), this eigenvalue, which is associated with the direction of ν , has the following hypergeometric representation

$$\begin{aligned} \lambda_1(\nu) = & -\|\nu\|^2 \left(\mu {}_2F_3 \left(1, \frac{n+2-\beta}{2}; 2, \frac{n+4}{2}, \frac{n+4-\beta}{2}; -\frac{1}{4}\|\nu\|^2\delta^2 \right) \right. \\ & + 2\mu {}_1F_2 \left(\frac{n+2-\beta}{2}; \frac{n+4}{2}, \frac{n+4-\beta}{2}; -\frac{1}{4}\|\nu\|^2\delta^2 \right) \\ & \left. + (\lambda^* - \mu) {}_1F_2 \left(\frac{n+2-\beta}{2}; \frac{n+2}{2}, \frac{n+4-\beta}{2}; -\frac{1}{4}\|\nu\|^2\delta^2 \right)^2 \right). \end{aligned} \tag{40}$$

An alternative expression for this eigenvalue can be obtained by using Lemma 3 to combine the first two hypergeometric functions, yielding

$$\begin{aligned} \lambda_1(\nu) = & -\|\nu\|^2 \left(3\mu {}_3F_4 \left(1, \frac{5}{2}, \frac{n+2-\beta}{2}; 2, \frac{3}{2}, \frac{n+4}{2}, \frac{n+4-\beta}{2}; -\frac{1}{4}\|\nu\|^2\delta^2 \right) \right. \\ & \left. + (\lambda^* - \mu) {}_1F_2 \left(\frac{n+2-\beta}{2}; \frac{n+2}{2}, \frac{n+4-\beta}{2}; -\frac{1}{4}\|\nu\|^2\delta^2 \right)^2 \right). \end{aligned} \tag{41}$$

The other $n - 1$ eigenvectors are orthogonal to ν . Denote by ν^\perp a vector in \mathbb{R}^n orthogonal to ν . Then,

$$M^{\delta,\beta}(\nu)\nu^\perp = \lambda_2(\nu)\nu^\perp, \tag{42}$$

where

$$\lambda_2(\nu) = \alpha_{b1}(\nu). \tag{43}$$

Using (36), this eigenvalue, which is associated with orthogonal directions to ν , has the following hypergeometric representation

$$\lambda_2(\nu) = -\mu\|\nu\|^2 {}_2F_3 \left(1, \frac{n+2-\beta}{2}; 2, \frac{n+4}{2}, \frac{n+4-\beta}{2}; -\frac{1}{4}\|\nu\|^2\delta^2 \right). \tag{44}$$

The results in this subsection are summarized in the following.

Theorem 1 For $v \in \mathbb{R}^n$, the eigenvalue $\lambda_1(v)$ of $M^{\delta,\beta}(v)$, associated with the direction of v , is given by the hypergeometric representation (41) and the eigenvalue $\lambda_2(v)$ of $M^{\delta,\beta}(v)$, associated with orthogonal directions to v , is given by the hypergeometric representation (44).

Corollary 1 Let $v \in \mathbb{R}^n$. Then, the tensor multipliers $M^{\delta,\beta}(v)$ and $M^N(v)$ have the same set of eigenvectors: v and $n - 1$ eigenvectors orthogonal to v . Moreover, the eigenvalues of $M^{\delta,\beta}(v)$ converge to the eigenvalues of $M^N(v)$ in the local limits as follows: for $\beta \leq n + 2$,

$$\begin{aligned} \lim_{\delta \rightarrow 0^+} \lambda_1(v) &= -(\lambda^* + 2\mu)\|v\|^2, \\ \lim_{\delta \rightarrow 0^+} \lambda_2(v) &= -\mu\|v\|^2, \end{aligned}$$

and for $\delta > 0$,

$$\begin{aligned} \lim_{\beta \rightarrow n+2^-} \lambda_1(v) &= -(\lambda^* + 2\mu)\|v\|^2, \\ \lim_{\beta \rightarrow n+2^-} \lambda_2(v) &= -\mu\|v\|^2. \end{aligned}$$

3.3.5 Integral Representations for the Eigenvalues of the Peridynamic Multipliers

In this section, we provide integral representations for the eigenvalues λ_1 and λ_2 , given by (40) and (44), respectively.

Theorem 2 The eigenvalue of $M^{\delta,\beta}(v)$ associated with the direction of v is given by

$$\begin{aligned} \lambda_1(v) &= (n + 2)\mu c^{\delta,\beta} \int_{B_\delta(0)} \frac{(v \cdot w)^2}{\|v\|^2 \|w\|^{\beta+2}} (\cos(v \cdot w) - 1) dw \\ &\quad - (\lambda^* - \mu) \left(\frac{c^{\delta,\beta}}{2} \int_{B_\delta(0)} \frac{v \cdot w}{\|v\| \|w\|^\beta} \sin(v \cdot w) dw \right)^2. \end{aligned} \tag{45}$$

The eigenvalue of $M^{\delta,\beta}(v)$ associated with orthogonal directions to v is given by

$$\lambda_2(v) = (n + 2)\mu c^{\delta,\beta} \int_{B_\delta(0)} \frac{v \cdot w}{\|v\|^2 \|w\|^{\beta+2}} (\sin(v \cdot w) - v \cdot w) dw. \tag{46}$$

Proof Solving (39) for $\lambda_1(v)$, we obtain

$$\lambda_1(v) = M(v)v \cdot \frac{v}{\|v\|^2}. \tag{47}$$

The result (45) follows from (47) combined with the fact that $M = M_b + M_s$ and the integral representations of the multipliers given in (12) and (14).

To derive (46), we use (43) and (35) to write

$$\lambda_2(v) = \frac{(n + 2)\mu c^{\delta,\beta}}{c^{\delta,\beta+2}} \left({}_2F_1 \left(\frac{n - \beta}{2}; \frac{n + 2}{2}, \frac{n + 2 - \beta}{2}; -\frac{1}{4}\|v\|^2 \delta^2 \right) - 2 \right). \tag{48}$$

From (24), (30), and (33), we obtain

$$c^{\delta,\beta} \int_{B_\delta(0)} \frac{w}{\|w\|^\beta} \sin(v \cdot w) \, dw = 2 \, {}_1F_2 \left(\frac{n+2-\beta}{2}; \frac{n+2}{2}, \frac{n+4-\beta}{2}; -\frac{1}{4} \|v\|^2 \delta^2 \right) v.$$

Thus, by replacing β by $\beta + 2$, then multiplying both sides of the above equation by $\frac{v}{\|v\|^2}$, we find

$$c^{\delta,\beta+2} \int_{B_\delta(0)} \frac{v \cdot w}{\|w\|^{\beta+2} \|v\|^2} \sin(v \cdot w) \, dw = 2 \, {}_1F_2 \left(\frac{n-\beta}{2}; \frac{n+2}{2}, \frac{n+2-\beta}{2}; -\frac{1}{4} \|v\|^2 \delta^2 \right). \tag{49}$$

Using (27), we have the following identities

$$\begin{aligned} 2 &= (2I)v \cdot \frac{v}{\|v\|^2} \\ &= \left(c^{\delta,\beta+2} \int_{B_\delta(0)} \frac{w \otimes w}{\|w\|^{\beta+2}} \, dw \right) v \cdot \frac{v}{\|v\|^2} \\ &= c^{\delta,\beta+2} \int_{B_\delta(0)} \frac{(v \cdot w)^2}{\|w\|^{\beta+2} \|v\|^2} \, dw. \end{aligned} \tag{50}$$

Using (48), (49), and (50), we obtain

$$\lambda_2(v) = \frac{(n+2)\mu c^{\delta,\beta}}{c^{\delta,\beta+2}} \left(c^{\delta,\beta+2} \int_{B_\delta(0)} \frac{v \cdot w}{\|w\|^{\beta+2} \|v\|^2} (\sin(v \cdot w) - v \cdot w) \, dw \right),$$

from which the result follows. □

4 Eigenvalues of the Linear Peridynamic Operator

Consider $\mathcal{L}^{\delta,\beta}$ as an operator on the periodic torus

$$\mathbf{T}^n = \prod_{i=1}^n [0, \ell_i], \quad \text{with } \ell_i > 0, \quad i = 1, 2, \dots, n.$$

In this section, we use the multiplier approach developed in the previous sections to identify the eigenvalues and the eigenvector fields of the operator $\mathcal{L}^{\delta,\beta}$,

$$\mathcal{L}^{\delta,\beta} \phi = \lambda \phi.$$

Let γ be a fixed vector in \mathbb{R}^n . For any $k \in \mathbb{Z}^n$, define

$$\begin{aligned} v_k &= (2\pi k_1/\ell_1, 2\pi k_2/\ell_2, \dots, 2\pi k_n/\ell_n)^T, \\ \psi_k(x) &= e^{i v_k \cdot x} \gamma. \end{aligned}$$

Then, by applying \mathcal{L}_b in (4), and using (12), we obtain

$$\begin{aligned} \mathcal{L}_b \psi_k(x) &= (n+2) \mu c^{\delta,\beta} \int_{B_\delta(0)} \frac{w \otimes w}{\|w\|^{\beta+2}} (e^{i v_k \cdot (x+w)} \gamma - e^{i v_k \cdot x} \gamma) \, dw, \\ &= \left((n+2) \mu c^{\delta,\beta} \int_{B_\delta(0)} \frac{w \otimes w}{\|w\|^{\beta+2}} (e^{i v_k \cdot w} - 1) \, dw \right) e^{i v_k \cdot x} \gamma, \\ &= M_b(v_k) \psi_k(x). \end{aligned} \tag{51}$$

Similarly, by applying \mathcal{L}_s in (5), and using (14), we obtain

$$\begin{aligned} \mathcal{L}_s \boldsymbol{\psi}_k(x) &= (\lambda^* - \mu) \frac{(c^{\delta,\beta})^2}{4} \int_{B_\delta(0)} \int_{B_\delta(0)} \frac{w}{\|w\|^\beta} \otimes \frac{q}{\|q\|^\beta} e^{i\nu_k \cdot (x+q+w)} \gamma \, dqdw, \\ &= (\lambda^* - \mu) \frac{(c^{\delta,\beta})^2}{4} \left(\int_{B_\delta(0)} \frac{w}{\|w\|^\beta} e^{i\nu_k \cdot w} \, dw \right) \otimes \left(\int_{B_\delta(0)} \frac{q}{\|q\|^\beta} e^{i\nu_k \cdot q} \, dq \right) e^{i\nu_k \cdot x} \gamma, \\ &= M_s(\nu_k) \boldsymbol{\psi}_k(x). \end{aligned} \tag{52}$$

Equations (51), (52), and (15) yield

$$\begin{aligned} \mathcal{L}^{\delta,\beta} \boldsymbol{\psi}_k &= \mathcal{L}_b \boldsymbol{\psi}_k + \mathcal{L}_s \boldsymbol{\psi}_k, \\ &= M_b(\nu_k) \boldsymbol{\psi}_k + M_s(\nu_k) \boldsymbol{\psi}_k, \\ &= M^{\delta,\beta}(\nu_k) \boldsymbol{\psi}_k. \end{aligned} \tag{53}$$

Denote by $M_k = M^{\delta,\beta}(\nu_k)$, the tensor multiplier evaluated at ν_k . From (38), (39), and (39), the matrix M_k is real symmetric and has n orthogonal eigenvectors: one in the direction of ν_k , and $n - 1$ orthogonal to ν_k , denoted by $\zeta_k^2, \dots, \zeta_k^n$. The associated eigenvalues are denoted by $\lambda_1(k) := \lambda_1(\nu_k)$ and $\lambda_2(k) := \lambda_2(\nu_k)$, respectively. Explicitly,

$$\begin{aligned} M_k \nu_k &= \lambda_1(k) \nu_k, \\ M_k \zeta_k^j &= \lambda_2(k) \zeta_k^j, \quad j = 2, \dots, n. \end{aligned}$$

Define

$$\boldsymbol{\phi}_k^1(x) = e^{i\nu_k \cdot x} \nu_k, \tag{54}$$

$$\boldsymbol{\phi}_k^j(x) = e^{i\nu_k \cdot x} \zeta_k^j, \quad j = 2, \dots, n. \tag{55}$$

Then,

$$\begin{aligned} \mathcal{L}^{\delta,\beta} \boldsymbol{\phi}_k^1 &= M^{\delta,\beta}(\nu_k) \boldsymbol{\phi}_k^1, \\ &= e^{i\nu_k \cdot x} M_k \nu_k, \\ &= e^{i\nu_k \cdot x} \lambda_1(k) \nu_k, \\ &= \lambda_1(k) \boldsymbol{\phi}_k^1, \end{aligned} \tag{56}$$

and, for $j = 2, \dots, n$,

$$\begin{aligned} \mathcal{L}^{\delta,\beta} \boldsymbol{\phi}_k^j &= M^{\delta,\beta}(\nu_k) \boldsymbol{\phi}_k^j, \\ &= e^{i\nu_k \cdot x} M_k \zeta_k^j, \\ &= e^{i\nu_k \cdot x} \lambda_2(k) \zeta_k^j, \\ &= \lambda_2(k) \boldsymbol{\phi}_k^j. \end{aligned} \tag{57}$$

This shows that the eigenvalues $\lambda_1(k)$ and $\lambda_2(k)$ of the peridynamic operator $\mathcal{L}^{\delta,\beta}$, defined on the periodic torus, are the eigenvalues of the tensor multipliers M_k .

Remark 4 In the eigenvector fields definition in (54) and (55), the complex-valued functions $e^{i\nu_k \cdot x}$ can be replaced by the real-valued functions $\cos(\nu_k \cdot x)$ or $\sin(\nu_k \cdot x)$.

The summary is given in the following result.

Theorem 3 Let $k \in \mathbb{Z}^n$. The eigenvalues of the linear peridynamic operator $\mathcal{L}^{\delta, \beta}$ are $\lambda_1(k) := \lambda_1(\nu_k)$ with associated eigenvector fields ϕ_k^1 and $\lambda_2(k) := \lambda_2(\nu_k)$ with associated eigenvector fields ϕ_k^2 , for $j = 2, \dots, n$, where λ_1 and λ_2 are given in Theorem 1, or equivalently, in Theorem 2. The eigenvector fields $\{\phi_k^j\}_{k \in \mathbb{Z}^n}$, with $j = 1, \dots, n$, are defined in (54) and (55).

Convergence of the eigenvalues of the peridynamic operator to the eigenvalues of the Navier operator follows immediately from Corollary 1 and Theorem 3. The eigenvalues of the Navier operator in (6) are given by

$$\lambda_1^N(k) = -(\lambda^* + 2\mu)\|k\|^2, \quad \text{and} \quad \lambda_2^N(k) = -\mu\|k\|^2. \quad (58)$$

5 Discussion

The hypergeometric representations of the eigenvalues, given in (40) and (44), are utilized to compute the eigenvalues λ_1 and λ_2 as shown in Fig. 1. It easily follows from (58) that for the Navier operator, the eigenvalues are non-positive and $\lambda_1^N(\nu)$ is decreasing in λ^* for a fixed value of μ , which additionally can be seen from the eigenvalues' curves for the Navier operator (top-left) in Fig. 1. The non-positivity of the eigenvalues and the monotonicity of $\lambda_1(\nu)$ as a function of λ^* hold true as well for the peridynamic operator. These observations follow from (45) and (46) for any $\delta > 0$ and $\beta < n + 2$ and can also be observed in Fig. 1. In addition, in this figure, we note that in the first row (which corresponds to δ being close to 0) and the first column (which corresponds to β being close to $n + 2$) the eigenvalues satisfy $\lambda_1(\nu) \approx \lambda_1^N(\nu)$ and $\lambda_2(\nu) \approx \lambda_2^N(\nu)$, which is consistent with Corollary 1 and the fact that the hypergeometric functions in (41) and (44) are continuous. Moreover, in the second row of Fig. 1, which corresponds to $\beta = n + 1$, we observe that the curves of the eigenvalues $\lambda_1(\nu)$ and $\lambda_2(\nu)$ are linear, of order $\|\nu\|$, for large values of $\|\nu\|$. The asymptotic behavior of the eigenvalues in the third row of this figure, which corresponds to $\beta = n$, can be shown to be logarithmic in $\|\nu\|$. Furthermore, for integrable kernels (when $\beta < n$), it can be seen from the fourth row of Fig. 1 that the eigenvalues are bounded. These observations can be rigorously proved, similar to the approach followed in [1], using the hypergeometric representations (41) and (44), and can be used to derive regularity results for peridynamic equations. Lastly, we notice in the figure that the curves of $\lambda_1(\nu)$ for different values of λ^* converge to a single curve for large values of $\|\nu\|$, in the case that $\beta < n$. This can be shown using the integral representation (45) of λ_1 and the Riemann-Lebesgue Lemma, which implies that $\sin(\nu \cdot w)$ weakly converges to 0 in the limit as $\|\nu\| \rightarrow \infty$.

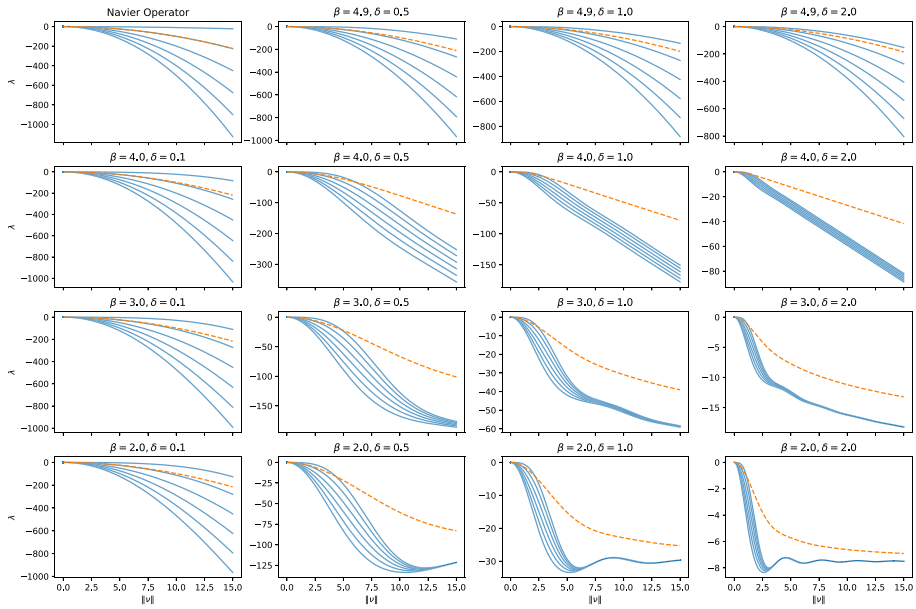


Fig. 1 The eigenvalues (vertical axis) $\lambda_1(v)$ and $\lambda_2(v)$, as given by (45) and (46), for the 3D case. Here $\|v\|$ (horizontal axis) is sampled at 1000 equispaced points in the interval $[0, 15]$ and δ and β are as given in the titles. The shear modulus and the second Lamé parameter are given by $\mu = 1$ and $\lambda^* = -1.9, -1, 0, 1, 2$. For each plot, the dashed line shows $\lambda_2(v)$ and the solid lines show $\lambda_1(v)$ corresponding to the different values of λ^* in a decreasing order, i.e., the top solid curve corresponds to $\lambda^* = -1.9$, the second corresponds to $\lambda^* = -1$, etc.

Appendix. Alternative Derivations of the Hypergeometric Representations

In this section, we provide an alternative derivation of the hypergeometric representations summarized in Proposition 3. In the following, the n -sphere is denoted

$$S^n = \{x \in \mathbb{R}^{n+1} : \|x\| = 1\},$$

while the n -ball is denoted

$$B^n = \{x \in \mathbb{R}^n : \|x\| < 1\}.$$

The $(n - 1)$ -sphere has surface area

$$S_{n-1} = \frac{2\pi^{\frac{n}{2}}}{\Gamma\left(\frac{n}{2}\right)},$$

while the n -ball has volume

$$V_n = \frac{\pi^{\frac{n}{2}}}{\Gamma\left(\frac{n}{2} + 1\right)}.$$

Formula for M_b

Consider the integral

$$g_b(v) := \int_{B_\delta(0)} \frac{1 - \frac{1}{2}(v \cdot w)^2 - \cos(v \cdot w)}{\|w\|^{\beta+2}} dw. \tag{59}$$

Since the numerator is of order $O(\|w\|^4)$, the integral converges as long as $\beta < n + 2$. Moreover,

$$\frac{\partial^2 g_b(v)}{\partial v_i \partial v_j} = \int_{B_\delta(0)} \frac{w_i w_j}{\|w\|^{\beta+2}} (\cos(v \cdot w) - 1) dw.$$

Now, we rewrite (59) in spherical coordinates oriented so that $v \cdot w = \|v\|r \cos \phi_1$. The integral can be written as

$$g_b(v) = \int_0^\delta r^{n-\beta-3} \int_{S^{n-1}} \left(1 - \frac{1}{2}\|v\|^2 r^2 \cos^2 \phi_1 - \cos(\|v\|r \cos \phi_1)\right) d_{S^{n-1}} V dr. \tag{60}$$

The innermost integral consists of three terms. The first term is simply

$$\int_{S^{n-1}} d_{S^{n-1}} V = S_{n-1}.$$

For the second term, we write

$$\begin{aligned} -\frac{1}{2}\|v\|^2 r^2 \int_{S^{n-1}} \cos^2 \phi_1 d_{S^{n-1}} V &= -\frac{1}{2}\|v\|^2 r^2 S_{n-2} \int_0^\pi \cos^2 \phi_1 \sin^{n-2} \phi_1 d\phi_1 \\ &= -\frac{1}{4}\|v\|^2 r^2 S_{n-2} \frac{\pi^{\frac{1}{2}} \Gamma\left(\frac{n-1}{2}\right)}{\Gamma\left(\frac{n}{2} + 1\right)} \\ &= -\frac{1}{4}\|v\|^2 r^2 \frac{2\pi^{\frac{n-1}{2}}}{\Gamma\left(\frac{n-1}{2}\right)} \frac{\pi^{\frac{1}{2}} \Gamma\left(\frac{n-1}{2}\right)}{\Gamma\left(\frac{n}{2} + 1\right)} \\ &= -\frac{1}{2}\|v\|^2 r^2 \frac{\pi^{\frac{n}{2}}}{\Gamma\left(\frac{n}{2} + 1\right)} = -\frac{1}{2}\|v\|^2 r^2 V_n. \end{aligned}$$

For the final term, we use [12, Eq. (9.1.20)].

$$\begin{aligned} -\int_{S^{n-1}} \cos(\|v\|r \cos \phi_1) d_{S^{n-1}} V &= -S_{n-2} \int_0^\pi \cos(\|v\|r \cos \phi_1) \sin^{n-2} \phi_1 d\phi_1 \\ &= -S_{n-2} \frac{\pi^{\frac{1}{2}} \Gamma\left(\frac{n-1}{2}\right)}{\left(\frac{1}{2}\|v\|r\right)^{\frac{n}{2}-1}} J_{\frac{n}{2}-1}(\|v\|r) \\ &= -\frac{2\pi^{\frac{n-1}{2}}}{\Gamma\left(\frac{n-1}{2}\right)} \frac{\pi^{\frac{1}{2}} \Gamma\left(\frac{n-1}{2}\right)}{\left(\frac{1}{2}\|v\|r\right)^{\frac{n}{2}-1}} J_{\frac{n}{2}-1}(\|v\|r) \\ &= -\frac{2\pi^{\frac{n}{2}}}{\left(\frac{1}{2}\|v\|r\right)^{\frac{n}{2}-1}} J_{\frac{n}{2}-1}(\|v\|r). \end{aligned}$$

Now, we can apply [12, Eq. (9.1.10)] to obtain a series representation.

$$-\int_{S^{n-1}} \cos(\|v\|r \cos \phi_1) d_{S^{n-1}} V = -2\pi^{\frac{n}{2}} \sum_{k=0}^{\infty} \frac{(-\frac{1}{4}\|v\|^2 r^2)^k}{k! \Gamma(\frac{n}{2} + k)}.$$

Combining the three terms for the inner integral in (60) yields

$$\begin{aligned} & \int_{S^{n-1}} \left(1 - \frac{1}{2}\|v\|^2 r^2 \cos^2 \phi_1 - \cos(\|v\|r \cos \phi_1)\right) d_{S^{n-1}} V \\ &= S_{n-1} - \frac{1}{2}\|v\|^2 r^2 V_n - 2\pi^{\frac{n}{2}} \sum_{k=0}^{\infty} \frac{(-\frac{1}{4}\|v\|^2 r^2)^k}{k! \Gamma(\frac{n}{2} + k)} \\ &= 2\pi^{\frac{n}{2}} \frac{1}{\Gamma(\frac{n}{2})} + 2\pi^{\frac{n}{2}} \frac{-\frac{1}{4}\|v\|^2 r^2}{\Gamma(\frac{n}{2} + 1)} - 2\pi^{\frac{n}{2}} \sum_{k=0}^{\infty} \frac{(-\frac{1}{4}\|v\|^2 r^2)^k}{k! \Gamma(\frac{n}{2} + k)} \\ &= -2\pi^{\frac{n}{2}} \sum_{k=2}^{\infty} \frac{(-\frac{1}{4}\|v\|^2 r^2)^k}{k! \Gamma(\frac{n}{2} + k)}. \end{aligned}$$

Substituting into (60) and integrating provides the series representation

$$\begin{aligned} g_b(v) &= -2\pi^{\frac{n}{2}} \sum_{k=2}^{\infty} \int_0^\delta \frac{(-\frac{1}{4})^k \|v\|^{2k} r^{2k+n-\beta-3}}{k! \Gamma(\frac{n}{2} + k)} \\ &= -2\pi^{\frac{n}{2}} \sum_{k=2}^{\infty} \frac{(-\frac{1}{4})^k \|v\|^{2k} \delta^{2k+n-\beta-2}}{(2k + n - \beta - 2)k! \Gamma(\frac{n}{2} + k)}. \end{aligned}$$

Differentiation shows that

$$\frac{\partial g_b(v)}{\partial v_i} = -4v_i \pi^{\frac{n}{2}} \sum_{k=2}^{\infty} \frac{k(-\frac{1}{4})^k \|v\|^{2k-2} \delta^{2k+n-\beta-2}}{(2k + n - \beta - 2)k! \Gamma(\frac{n}{2} + k)},$$

and

$$\frac{\partial^2 g_b(v)}{\partial v_i \partial v_j} = -4\delta_{ij} \pi^{\frac{n}{2}} \sum_{k=2}^{\infty} \frac{k(-\frac{1}{4})^k \|v\|^{2k-2} \delta^{2k+n-\beta-2}}{(2k + n - \beta - 2)k! \Gamma(\frac{n}{2} + k)} - 8v_i v_j \pi^{\frac{n}{2}} \sum_{k=2}^{\infty} \frac{k(k-1)(-\frac{1}{4})^k \|v\|^{2k-4} \delta^{2k+n-\beta-2}}{(2k + n - \beta - 2)k! \Gamma(\frac{n}{2} + k)}.$$

Thus, the second gradient of g_b has the form

$$\nabla \nabla g_b = g_{b1}(v)I + g_{b2}(v)v \otimes v.$$

The functions g_{b1} and g_{b2} can be expressed as generalized hypergeometric series as follows. For g_{b1} , we write

$$\begin{aligned}
 g_{b1}(v) &= -4\pi^{\frac{n}{2}} \sum_{k=0}^{\infty} \frac{\left(-\frac{1}{4}\right)^{k+2} \|v\|^{2k+2} \delta^{2k+n-\beta+2}}{(2k+n-\beta+2)(k+1)\Gamma\left(\frac{n+4}{2}+k\right)} \\
 &= -4\pi^{\frac{n}{2}} \frac{\left(-\frac{1}{4}\right)^2 \|v\|^2 \delta^{n-\beta+2}}{(n+2-\beta)\Gamma\left(\frac{n+4}{2}\right)} \sum_{k=0}^{\infty} \frac{a_k}{k!} \left(-\frac{1}{4}\|v\|^2 \delta^2\right)^k,
 \end{aligned}$$

where

$$a_k = \frac{(n+2-\beta)\Gamma\left(\frac{n+4}{2}\right)}{(2k+n+2-\beta)\Gamma\left(k+\frac{n+4}{2}\right)(k+1)}.$$

The ratio of consecutive coefficients is

$$\frac{a_{k+1}}{a_k} = \frac{\left(k+\frac{n+2-\beta}{2}\right)(k+1)}{\left(k+\frac{n+4-\beta}{2}\right)\left(k+\frac{n+4}{2}\right)(k+2)}.$$

We can recognize the constant in front of the series by writing

$$-\frac{1}{4} \frac{\pi^{\frac{n}{2}} \delta^{n+2-\beta}}{(n+2-\beta)\Gamma\left(\frac{n+4}{2}\right)} = -\frac{1}{4} \frac{\pi^{\frac{n}{2}} \delta^{n+2-\beta}}{(n+2-\beta)\Gamma\left(\frac{n}{2}+1\right)\left(\frac{n}{2}+1\right)} = -\frac{1}{c^{\delta,\beta}(n+2)}.$$

Thus,

$$g_{b1}(v) = -\frac{\|v\|^2}{c^{\delta,\beta}(n+2)} {}_2F_3\left(1, \frac{n+2-\beta}{2}; 2, \frac{n+4}{2}, \frac{n+4-\beta}{2}; -\frac{1}{4}\|v\|^2 \delta^2\right).$$

Using a similar procedure for g_{b2} , we write

$$\begin{aligned}
 g_{b2}(v) &= -8\pi^{\frac{n}{2}} \sum_{k=0}^{\infty} \frac{\left(-\frac{1}{4}\right)^{k+2} \|v\|^{2k} \delta^{2k+n-\beta+2}}{(2k+n-\beta+2)k!\Gamma\left(\frac{n+4}{2}+k\right)} \\
 &= -8\pi^{\frac{n}{2}} \frac{\left(-\frac{1}{4}\right)^2 \delta^{n+2-\beta}}{(n+2-\beta)\Gamma\left(\frac{n+4}{2}\right)} \sum_{k=0}^{\infty} \frac{a_k}{k!} \left(-\frac{1}{4}\|v\|^2 \delta^2\right)^k,
 \end{aligned}$$

where

$$a_k = \frac{(n+2-\beta)\Gamma\left(\frac{n+4}{2}\right)}{(2k+n+2-\beta)\Gamma\left(k+\frac{n+4}{2}\right)}.$$

In this case, the ratio between consecutive coefficients is

$$\frac{a_{k+1}}{a_k} = \frac{\left(k + \frac{n+2-\beta}{2}\right)}{\left(k + \frac{n+4-\beta}{2}\right)\left(k + \frac{n+4}{2}\right)}.$$

The constant in front of the sum can be written as

$$-\frac{\pi^{\frac{n}{2}} \delta^{n+2-\beta}}{2(n+2-\beta)\Gamma\left(\frac{n}{2} + 1\right)\left(\frac{n+2}{2}\right)} = -\frac{2}{c^{\delta,\beta}(n+2)},$$

therefore

$$g_{b2}(\nu) = -\frac{2}{c^{\delta,\beta}(n+2)} {}_1F_2\left(\frac{n+2-\beta}{2}; \frac{n+4}{2}, \frac{n+4-\beta}{2}; -\frac{1}{4}\|\nu\|^2\delta^2\right).$$

To connect this with the multiplier matrix $M_b(\nu)$, we observe that

$$\begin{aligned} M_b(\nu) &= (n+2)\mu c^{\delta,\beta} \int_{B_\delta(0)} \frac{w \otimes w}{\|w\|^{\beta+2}} (\cos(\nu \cdot w) - 1) dw \\ &= (n+2)\mu c^{\delta,\beta} \nabla \nabla g_b(\nu) \\ &= -\mu \|\nu\|^2 {}_2F_3\left(1, \frac{n+2-\beta}{2}; 2, \frac{n+4}{2}, \frac{n+4-\beta}{2}; -\frac{1}{4}\|\nu\|^2\delta^2\right) I \\ &\quad - 2\mu {}_1F_2\left(\frac{n+2-\beta}{2}; \frac{n+4}{2}, \frac{n+4-\beta}{2}; -\frac{1}{4}\|\nu\|^2\delta^2\right) \nu \otimes \nu, \end{aligned}$$

recovering the first formula of Proposition 3.

Formula for M_s

The formula for M_s is similar, but we begin with the function

$$g_s(\nu) := \int_{B_\delta(0)} \frac{1 - \cos(\nu \cdot w)}{\|w\|^\beta} dw. \tag{61}$$

Since the numerator is of order $O(\|w\|^2)$, the integral converges as long as $\beta < n + 2$. Taking a derivative yields

$$\frac{\partial g_s(\nu)}{\partial \nu_i} = \int_{B_\delta(0)} \frac{w_i}{\|w\|^\beta} \sin(\nu \cdot w) dw.$$

Again, we can use spherical coordinates to write

$$g_s(\nu) = \int_0^\delta r^{n-\beta-1} \int_{S^{n-1}} (1 - \cos(\|\nu\|r \cos \phi_1)) d_{S^{n-1}} V dr. \tag{62}$$

The terms in the inner integral were found in the previous section and allow us to rewrite the inner integral as

$$\int_{S^{n-1}} (1 - \cos(\|v\|r \cos \phi_1)) d_{S^{n-1}} V = S_{n-1} - 2\pi^{\frac{n}{2}} \sum_{k=0}^{\infty} \frac{(-\frac{1}{4}\|v\|^2 r^2)^k}{k! \Gamma(\frac{n}{2} + k)}.$$

Therefore, by integrating,

$$\begin{aligned} g_s(v) &= S_{n-1} \int_0^\delta r^{n-\beta-1} dr - 2\pi^{\frac{n}{2}} \sum_{k=0}^{\infty} \int_0^\delta \frac{(-\frac{1}{4})^k \|v\|^{2k} r^{2k+n-\beta-1}}{k! \Gamma(\frac{n}{2} + k)} dr \\ &= S_{n-1} \int_0^\delta r^{n-\beta-1} dr - 2\pi^{\frac{n}{2}} \sum_{k=0}^{\infty} \frac{(-\frac{1}{4})^k \|v\|^{2k} \delta^{2k+n-\beta}}{(2k + n - \beta) k! \Gamma(\frac{n}{2} + k)} dr. \end{aligned}$$

Differentiating yields

$$\begin{aligned} \frac{\partial g_s(v)}{\partial v_i} &= -4v_i \pi^{\frac{n}{2}} \sum_{k=1}^{\infty} \frac{k(-\frac{1}{4})^k \|v\|^{2k-2} \delta^{2k+n-\beta}}{(2k + n - \beta) k! \Gamma(\frac{n}{2} + k)} \\ &= -4v_i \pi^{\frac{n}{2}} \sum_{k=0}^{\infty} \frac{(-\frac{1}{4})^{k+1} \|v\|^{2k} \delta^{2k+n+2-\beta}}{(2k + n + 2 - \beta) k! \Gamma(\frac{n+2}{2} + k)} \\ &= -4v_i \pi^{\frac{n}{2}} \frac{-\frac{1}{4} \delta^{n+2-\beta}}{(n + 2 - \beta) \Gamma(\frac{n+2}{2})} \sum_{k=0}^{\infty} \frac{a_k}{k!} \left(-\frac{1}{4} \|v\|^2 \delta^2\right)^k, \end{aligned}$$

where

$$a_k = \frac{(n + 2 - \beta) \Gamma(\frac{n+2}{2})}{(2k + n + 2 - \beta) \Gamma(k + \frac{n+2}{2})}.$$

Again, the series is a generalized hypergeometric series with coefficient ratio

$$\frac{a_{k+1}}{a_k} = \frac{\left(k + \frac{n+2-\beta}{2}\right)}{\left(k + \frac{n+4-\beta}{2}\right) \left(k + \frac{n+2}{2}\right)}.$$

In order to recognize the constant in front of the series, we rewrite

$$-4\pi^{\frac{n}{2}} \frac{-\frac{1}{4} \delta^{n+2-\beta}}{(n + 2 - \beta) \Gamma(\frac{n+2}{2})} = \frac{2}{c^{\delta, \beta}},$$

therefore

$$\int_{B_\delta(0)} \frac{w}{\|w\|^\beta} \sin(v \cdot w) dw = \frac{2}{c^{\delta, \beta}} {}_1F_2\left(\frac{n + 2 - \beta}{2}; \frac{n + 2}{2}, \frac{n + 4 - \beta}{2}; -\frac{1}{4} \|v\|^2 \delta^2\right) v.$$

To connect this to the operator M_s , we note that

$$\begin{aligned} M_s(v) &= -(\lambda^* - \mu) \frac{(c^{\delta, \beta})^2}{4} \left(\int_{B_\delta(0)} \frac{w}{\|w\|^\beta} e^{iv \cdot w} dw \right) \otimes \left(\int_{B_\delta(0)} \frac{w}{\|w\|^\beta} e^{iv \cdot w} dw \right) \\ &= -(\lambda^* - \mu) {}_1F_2 \left(\frac{n+2-\beta}{2}; \frac{n+2}{2}, \frac{n+4-\beta}{2}; -\frac{1}{4} \|v\|^2 \delta^2 \right)^2 v \otimes v, \end{aligned}$$

recovering the second formula in Proposition 3.

Funding This project is based upon work supported by the National Science Foundation under Grant No. 2108588.

References

1. Alali B, Albin N (2021) Fourier multipliers for nonlocal Laplace operators. *Appl Anal* 100(12):2526–2546
2. Alali B, Albin N (2020) Fourier spectral methods for nonlocal models. *J Peridyn Nonlocal Model* 2(3):317–335
3. Du Q, Yang J (2017) Fast and accurate implementation of Fourier spectral approximations of nonlocal diffusion operators and its applications. *J Comput Phys* 332:118–134
4. Jafarzadeh S, Wang L, Larios A, Bobaru F (2021) A fast convolution-based method for peridynamic transient diffusion in arbitrary domains. *Comput Methods Appl Mech Eng* 375:113633
5. Slevinsky RM, Montanelli H, Du Q (2018) A spectral method for nonlocal diffusion operators on the sphere. *J Comput Phys* 372:893–911
6. Jafarzadeh S, Mousavi F, Larios A, Bobaru F (2022) A general and fast convolution-based method for peridynamics: applications to elasticity and brittle fracture. *Comput Methods Appl Mech Eng* 392:114666
7. Du Q, Yang J (2016) Asymptotically compatible Fourier spectral approximations of nonlocal Allen-Cahn equations. *SIAM J Numer Anal* 54(3):1899–1919
8. Zhou K, Du Q (2010) Mathematical and numerical analysis of linear peridynamic models with nonlocal boundary conditions. *SIAM J Numer Anal* 48(5):1759–1780
9. Scott JM (2022) The fractional Lamé-Navier operator: appearances, properties and applications. arXiv preprint [arXiv:2204.12029](https://arxiv.org/abs/2204.12029)
10. Scott J (2020) Mathematical analysis of a nonlocal system of equations arising in peridynamics. PhD thesis, The University of Tennessee
11. Silling SA (2010) Linearized theory of peridynamic states. *J Elast* 99(1):85–111
12. Abramowitz M, Stegun IA (1972) Handbook of mathematical functions: with formulas, graphs, and mathematical tables, vol. 55. Courier Corporation

Publisher's Note Springer Nature remains neutral with regard to jurisdictional claims in published maps and institutional affiliations.

Springer Nature or its licensor (e.g. a society or other partner) holds exclusive rights to this article under a publishing agreement with the author(s) or other rightsholder(s); author self-archiving of the accepted manuscript version of this article is solely governed by the terms of such publishing agreement and applicable law.