



# Seasonal Variability On Cross-shore Profile in Meso-tidal Settings Due to Lunar Cycle Effects in Kuala Terengganu Coast

Muhammad Fadhli Harris<sup>1</sup> · Muhammad Izuan Nadzri<sup>2</sup> · Ku Mohd Kalkausar Ku Yusof<sup>1</sup> · Wan Amrul Jaahiz Abd Razak<sup>2</sup> · Mohamad Hakim Mohd Shukri<sup>2</sup> · Nor Bakhiah Baharim<sup>1</sup> · Azizi Ali<sup>2</sup> · Effi Helmy Ariffin<sup>2</sup>

Received: 23 October 2023 / Revised: 10 March 2024 / Accepted: 29 March 2024 / Published online: 13 May 2024  
© The Author(s), under exclusive licence to Springer Nature Switzerland AG 2024

## Abstract

Kuala Terengganu, one of the coastal zones in Malaysia, is prone to natural hazard factors, such as coastal erosion which may affect the morphological condition of the beaches in Terengganu. The beach morphological changes were driven by the seasonal monsoon such as Northeast Monsoon (NEM) and Southwest Monsoon (SWM). Hence, to understand the short-temporal morphological response of meso-tidal beaches during spring tide events throughout the lunar cycle phase, the study was investigated in Batu Buruk Beach, Kuala Terengganu. The coastal profiles, particularly during spring tide (Full Moon and New Moon phases) were collected from five (5) transects starting on October 2020 to October 2021. The monitoring of cross-shore was conducted using Real time Kinematic (RTK) to measure the cross-sectional area and sediment volume changes. The data collected were computed using profiler 3.2XL software. MIKE-21 numerical modeling software was used to simulate tidal elevation within the period of this study. The results showed that Batu Buruk Beach received significant impact from the lunar cycle, especially on sediment gain and loss. The cross-sectional analysis revealed positive sediment gains during the Full Moon. However, during the New Moon phase, erosion seemed to take place around the upper swash zone area. This provides an insight into the spring tide erosion and accretion and contributes some understanding to beach recovery processes.

**Keywords** Numerical modelling · Meso-tidal · Lunar cycle effects · Natural beach · South China Sea

## Introduction

Dramatic coastal morphology changes over the course of time are often affected via factors, including waves, currents, tide and sediment transport upon natural beach system (Davidson-Arnott et al. 2005; Pradhan et al. 2022; Suanez et al. 2023). Temporally, the dynamics of the changes are constantly shifted in response to the seasonal monsoon variations, whereby the exposed coastal zone experiences higher intensity of the aforementioned factors (Castelle and

Harley 2020). Mother nature is known to have equilibrium response in altering the coastal morphology. The dynamic nature of sandy beaches is typically developed in areas that are subjected to cycles of erosion and accretion (Deepika and Jayappa 2017). Therefore, while intense volume of factors during one season is eroding the surface, inversely it is recovered (accretion) during the other calm season to regain sediment facilitated by wind action (Kaiser and Frihy 2009; Quartel et al. 2008). Additionally, external factors, especially outside of the earth planetary system, such as lunar cycle is also factored to be accounted for morphology changes during monsoon variations (Banno and Kuriyama 2020; Pye and Blott 2008; Ramos and Ranieri 2021).

The lunar cycle can be characterized as the moon's changing phases, which affect various natural phenomena on the earth hydro-lithosphere, such as Earth's tides through gravitational forces. Prior research most likely predominately focused on the effect of “spring tide” towards coastal region, but not documented well on the implication

✉ Effi Helmy Ariffin  
effihelmy@umt.edu.my

<sup>1</sup> Faculty of Science and Marine Environment, Universiti Malaysia Terengganu, 21030, Kuala Nerus, Terengganu, Malaysia

<sup>2</sup> Institute of Oceanography and Environment, Universiti Malaysia Terengganu, 21030, Kuala Nerus, Terengganu, Malaysia

influence particularly during the phases of Full Moon and New Moon in meso-tidal settings (Brand et al. 2020; Leung Chee et al. 2014; Qian et al. 2019). During a Full or New Moon period, the forces exerted by the moon and the sun on the earth reinforce each other, resulting in the largest tidal range, known as ‘spring tide’. However, during the half-moon phases, these forces oppose each other, resulting in the minimum tidal range in a lunar cycle, known as ‘neap tide’ (Singh and Jha 2012). Difference in the tidal type also affects the strengths of tidal currents, influencing the water movements due to the shorter/longer time between high and low tide (Mohd Yusoff et al. 2015). These tidal fluctuations can influence the behaviour of ocean currents, which in turn, potentially influences the coastal area (Banno and Kuriyama 2020; Barnard et al. 2015, 2017; Gratiot et al. 2008). Such phenomena and their attitude are crucial to be investigated, especially for maritime country, such as Malaysia.

Malaysia, a maritime-based country located in the vicinity of the South China Sea, is naturally subjected to prevailing winds from offshore, inducing occurrence of seasonal monsoons (Kok et al. 2019; Shariful et al. 2020). For instance, the eastern part of Peninsular Malaysia is vulnerable to seasonal monsoons, especially during the Northeast Monsoon (NEM) which lasts from October to the middle of March. Moreover, moderate waves are produced along Peninsular Malaysia's east coast during the Southwest Monsoon (SWM), which occurs from the middle of May to September (Ariffin et al. 2016). In addition, the occurrence of spring tide events induces responses at the beach in Terengganu.

Specifically, Terengganu, a state with shoreline of 224 km facing the South China Sea (Muslim et al. 2019), is experiencing increasing threat due to erosion. Several morphological structure attempts to mitigate the driven forces, such as waves and tide (Ariffin et al. 2018; Norsakinah Selamat et al. 2019) were done, but not covering all affecting factors. Over the past few decades, the issue of coastal erosion on the Terengganu coast has been a threat to the surrounding community (Dong et al. 2023; Ghazali 2006). Batu Buruk Beach was well known as a tourism destination, which attracts people for recreational activities. The local authority did implement beach nourishment to sustain the beach area from erosion (Ghazali 2004; Narashid et al. 2021). However, the importance of monitoring profile in natural sandy beaches ensures a deeper understanding of the processes underlying coastal geomorphology and how natural beach systems respond to environmental stress. Without a proper understanding, this could lead to false interpretations about the meso-tidal beaches when adapting to changing conditions. This short temporal time frame provide an insight into understanding the lunar cycle effects on these beaches morphological changes during spring tide. Therefore, in this research, we monitored the cross-shore profile by measuring

changes during the beginning of the Northeast Monsoon (NEM) (October 2020) and the post-monsoon period (October 2021). Additionally, tidal modelling simulations were carried out to identify the short-temporal beach morphological reaction during spring tide events through the lunar cycle phase along Batu Buruk Beach, Kuala Terengganu.

## Study Area

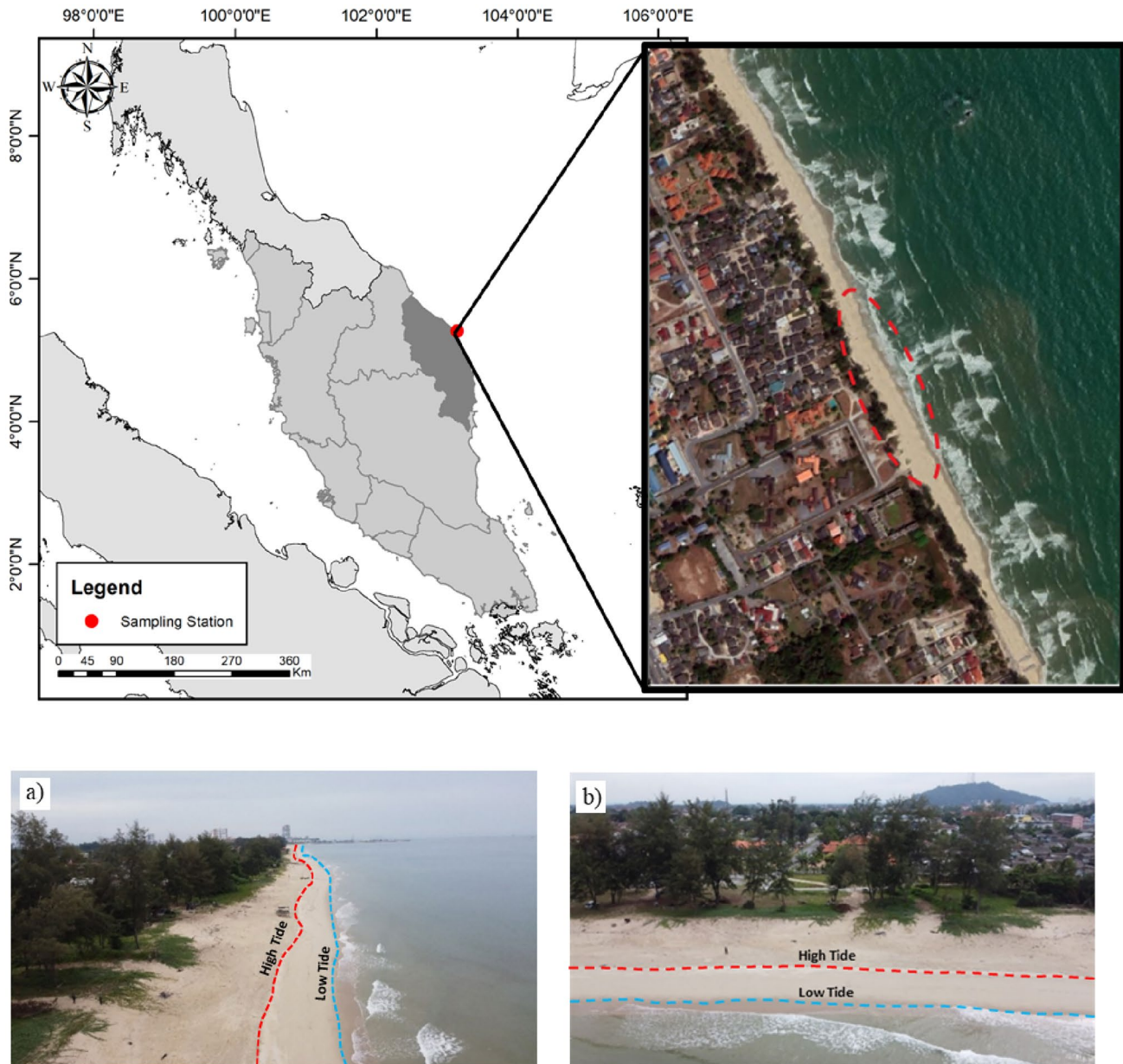
The prominent coastal features observed along the East Coast of Peninsular Malaysia, particularly in the Terengganu regions, are described by mesotidal sandy beaches. The study area (Fig. 1) is situated at Batu Buruk beach, Kuala Terengganu, which is a natural beach unaffected by anthropogenic activities. Five transects have been set up and positioned along Batu Buruk beach to investigate the morphodynamic response during the different seasonal monsoons: Northeast Monsoon (NEM), Southwest Monsoon (SWM), and Inter-Monsoon (IM).

## Methodology

The assessment was aimed to evaluate the morphological response of the beach and conducted at Batu Buruk Beach, Kuala Terengganu. The research methodology comprised of several components, including field monitoring, hydrodynamics modelling, and statistical analysis, which was carried out from October 2020 to October 2021. These methods were used to identify the influence of seasonal variation of the lunar cycle on the observed beach dynamics.

## Field Monitoring

The data was collected through field measurements by using Real-Time Kinematic Ground Positioning System (Topcon GR-5 GNSS) technology in kinematic mode to obtain profile data directly throughout the sampling period and to enable measurement of cross-shore profile. These types of surveys were used to investigate the natural processes of beach morphology due to the influence of seasonal variation. For this study, survey was carried out on October 2020, March 2021, August 2021 and October 2021. The monitoring was conducted on spring tide (Full Moon and New Moon) events during low tide throughout the sampling session. Five (5) transects were positioned along Batu Buruk Beach, Kuala Terengganu with each transect at 50 m intervals (Fig. 2). The profiles were measured from below the Mean Sea Level (MSL), starting at a fixed reference point benchmark located at the backshore area and all measurements were taken perpendicular to the shoreline from the reference point. All heights were relative to the Land Survey Datum (LSD),

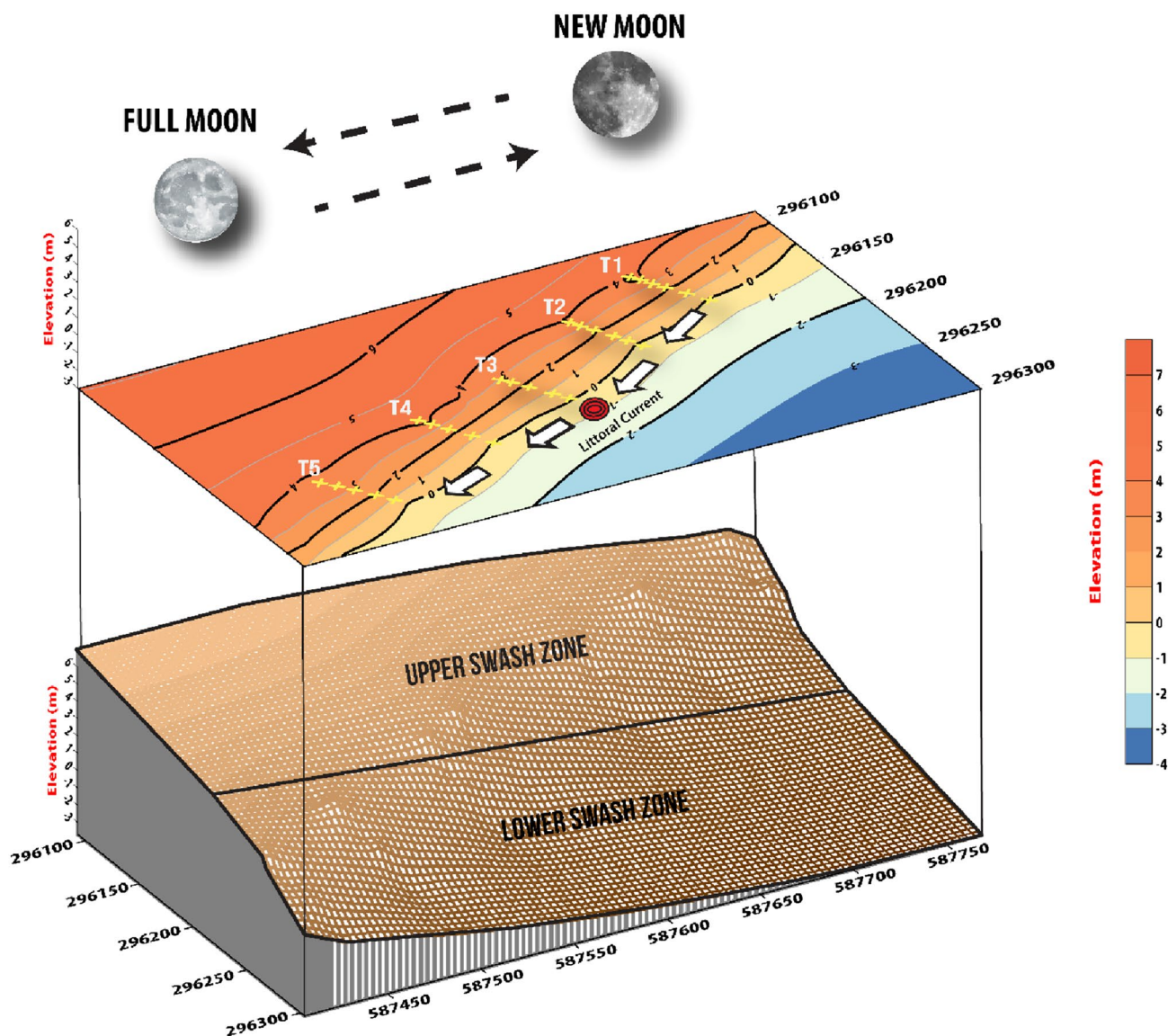


**Fig. 1** The location of the research ground, Batu Buruk Beach, Kuala Terengganu. **a)** Northern view from sampling site **b)** Front view of Batu Buruk Beach

the standard Malaysia reference level. The levelling of the beach elevations corresponded to the datum level at the Land Survey Datum (LSD), which comprised of mean high-water springs (MHWS), mean sea level (MSL) and mean low-water spring (MLWS) i.e. 3.28 m, 2.22 m, and 1.12 m, respectively. Then, the measured data was analyzed by using profiler 3.2XL which was developed by Cohen (2014), to calculate the cross-shore profile and the volumetric analyses for each transects, and baseline survey profiles for all survey sessions mentioned above.

### Tidal Modelling Simulation

The hydrodynamics modelling setup was simulated by using MIKE21 Flow Model Flexible Mesh (Flow Model FM) software developed by Danish Hydraulics Institute (DHI). The model simulation was used to characterize the water level condition during lunar cycle phases upon different seasonal variations. The mesh grid was comprised within the range of 5.9–4.95°N to 102.8–103.7°N in the Terengganu shoreline (Fig. 3a).

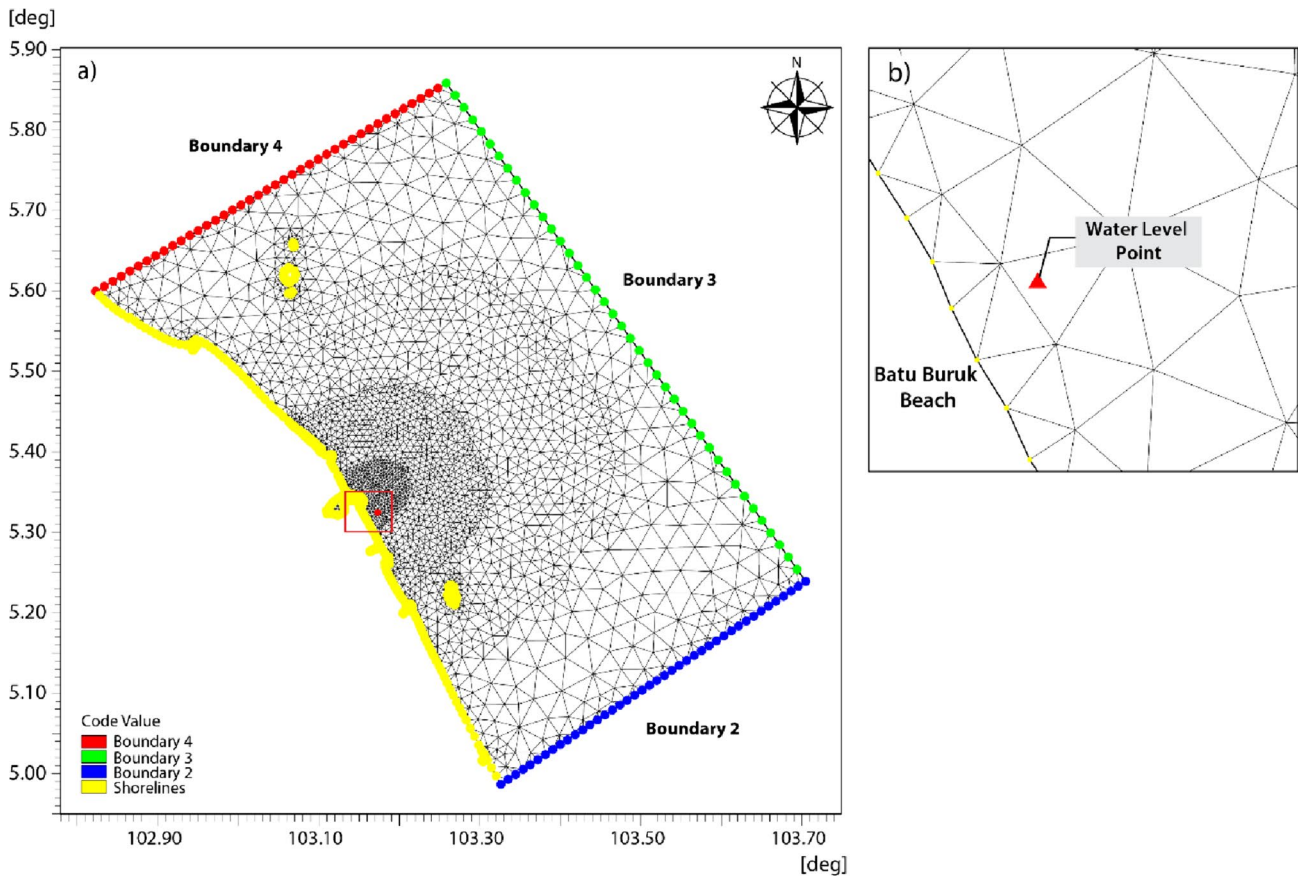


**Fig. 2** Illustration of beach profile of research ground showing the location of transects for cross-shore profile measurements (T1—T5)

The bathymetry data was acquired from DHI MIKE C-Map to develop the numerical model. As for model input, a series of wind data was obtained from the European Centre for Medium-Range Weather Forecasts (ECMWF 2017), which was located about 80 km offshore, parallel to the coastline boundary and based on the annual flow for this region, which mainly from northeast and south. The forcing factor of water level was imported into three open boundaries, such as boundary 2 (south), boundary 3 (east), and boundary 4 (north), and was set up based on the projection of global tide model prediction by Mike-21 (Ariffin et al. 2020; Awang et al. 2014).

The extraction point of the tidal elevation data (Fig. 3b) lies within the modeled study area of ground research with

coordinates of 5.314°N, 103.163°E; about 0.2 km from the shoreline. For this study, default settings were employed for extracting the tidal simulation data. The extraction data point encompasses the analysis of 10 major harmonic constituents (M2, S2, K2, N2, S1, K1, O1, P1, Q1, M4) at one-hour intervals (DHI 2017). The tidal elevation was computed throughout the MIKE-21 simulation from October 2020 to October 2021. The data extraction from the simulation was taken monthly, for instance October 2020, March 2021, August 2021, and October 2021 by point series. The result was used to validate the MIKE-21 simulation to interpret the tidal influence on beach morphology, particularly during the spring tide period simulated using computational calculation by MIKE-21 software. This simulation period covers



**Fig. 3** a Mesh setup at Terengganu shoreline. The Red box shows the research ground area. b Extraction point of water level

one lunar cycle which focused on the Full Moon and New Moon phase. The setup details of the model in this study were outlined in Table 1.

### Statistical Analysis

The data collected was subjected to rigorous statistical analysis with the help of specialized software, in particular XLStat (ver. 2019, USA) and R version 4.0.4 (R Development Core Team 2011). The core objective of this analysis was to discern the impact of lunar cycles, specifically the Full Moon and New Moon phases, on beach volume across distinct transects as influenced by varying seasonal monsoons. The Shapiro–Wilk method was utilized to conduct a meticulous normality test on all samples, with a significance level of 95%. A deviation from the normal distribution for the dataset under consideration was discovered during the normality assessment for the dataset under consideration. Given that the normality hypothesis was not met ( $p < 0.05$ ), the subsequent analysis was done by adopting non-parametric methods. Principally, the Kruskal–Wallis test, accompanied by the Dunn test as a post-hoc procedure, was employed to examine potential disparities in beach volume across the

different transects within various seasonal monsoons while simultaneously considering the influence of lunar cycles.

Furthermore, the Mann–Whitney test ( $p < 0.05$ ) was deployed to discern significant distinctions between the two independent variables of interest: the impact of lunar cycles within each transects and the contrasting beach volume outcomes between the distinct lunar phases, namely the Full Moon and New Moon. This scientific investigation

**Table 1** Domain setup parameters

Name	Settings
Mesh and Bathymetry	Interpolation by using the natural neighbor method
Number of time step	3600 (s)
Number of nodes	17,520
Number of elements	3166
Simulation Period	Number of time steps: Time step interval Simulation start date: 1 January 2020 Simulation end date: 31 December 2021
Output	Point Output items: surface elevation (m)

presents a complete and meticulously executed analysis that deepens the complex relationship between lunar cycles and beach volume through various transects exposed to diverse seasonal monsoons. The applied statistical procedures, encompassing normality testing and non-parametric tests (Kruskal–Wallis and Mann–Whitney), augmented by post-hoc analysis (Dunn test), were instrumental in illuminating significant disparities in beach volume attributable to the lunar cycle and the specific phases of the Full Moon and New Moon. Throughout the analysis, a significance level of 0.05 was maintained, which justified the statistical significance of the findings below this critical level.

### Results and Discussion

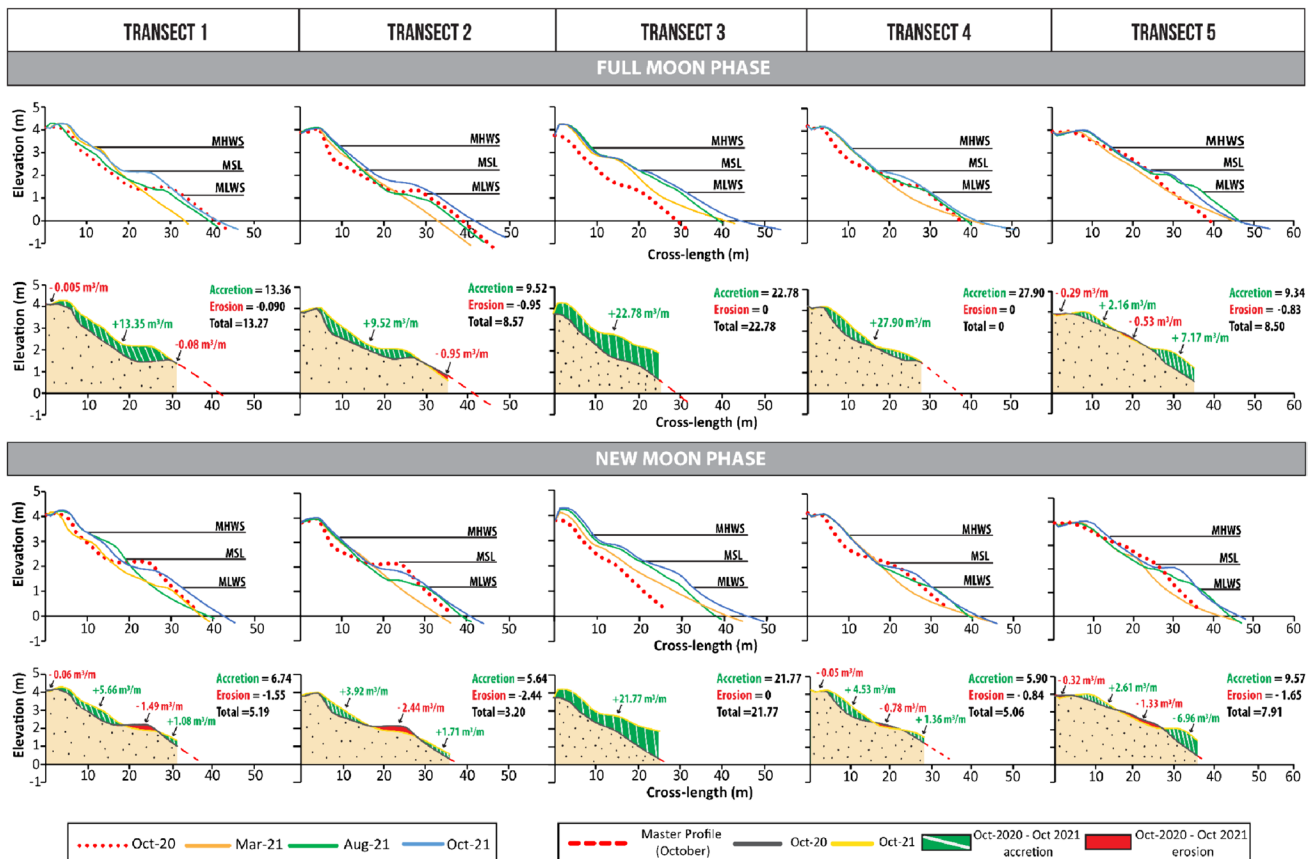
Figure 4 demonstrates the beach profile and beach volume, while Table 2 summarizes the changes in beach volume for five transects within the selected study months. The characteristics of the tide were obtained from the model simulation to portray the information of the tide pattern and the water level, which were interconnected to beach volume. The statistical analysis was conducted to dictate the influence of

seasonal variation and lunar cycle on beach volume in Batu Buruk Beach, Kuala Terengganu.

### Seasonal Monsoonal Variation Effects On Beach Volume Dynamics

The understanding of variation in cross-shore profile patterns and volume changes that occur along a coast is facilitated by the analysis of beach profile data. The interpretation of natural beach response to coastal processes is based on providing information data, such as geometric and volumetric assessment. The result of the survey in Fig. 4, from October 2020 to October 2021 demonstrated relative differences in cross-shore length and accretion/erosion rate for each of the transects. Hence, the beach width oscillated between 30 to 58 m from the reference point. The profile of the baseline survey (October 2020) was compared with the final profile (October 2021).

The results obtained from five transects during the Full Moon phase in the pre-monsoon period (Oct 20- Mar 21) indicated accretion rates at Transect 3 with  $17.25\text{m}^3/\text{m}$  (33.52%), showing the deposition of sediment. However, Transects 2 and 5 appeared to undergo minor erosion



**Fig. 4** The Full Moon (top) and New Moon (bottom) beach profile and volume profile changes for Pantai Batu Buruk, Kuala Terengganu at Transect 1, Transect 2, Transect 3, Transect 4 and Transect 5

**Table 2** Calculate accretion (Acc) and erosion (Ero) values in m2 in all transects for the survey throughout survey period

Transects	Baseline	FULL MOON															
		Oct 20 – Mar 21				Mar 21- Aug 21				Aug 21- Oct 21				Oct 20 -Oct 21			
		Acc	Ero	Total	%	Acc	Ero	Total	%	Acc	Ero	Total	%	Acc	Ero	Total	%
T1	0.147	7.38	-6.10	1.28	1.82	5.65	-4.08	1.57	2.19	10.69	-0.29	10.40	14.13	13.35	-0.09	13.26	18.74
T2	-0.347	4.36	-7.54	-3.18	-4.61	6.30	-0.83	5.47	7.67	6.44	-0.16	6.28	8.45	9.52	-0.95	8.57	11.39
T3	0.082	17.25	0	17.25	33.52	5.42	-0.03	5.39	7.85	0.80	-0.67	0.13	0.19	22.78	0	22.78	44.27
T4	0.009	20.14	0	20.14	29.35	4.89	-0.02	4.87	5.49	2.95	-0.06	2.89	3.09	27.90	0	27.90	40.67
T5	0.205	0.93	-4.56	-3.63	-4.19	11.45	-0.33	11.12	13.41	1.67	-0.65	1.02	1.09	9.34	-0.83	8.51	9.84
<b>TOTAL</b>		<b>50.06</b>	<b>-18.20</b>	<b>31.86</b>		<b>33.71</b>	<b>-5.29</b>	<b>28.42</b>		<b>22.55</b>	<b>-1.83</b>	<b>20.72</b>		<b>82.89</b>	<b>-1.87</b>	<b>81.02</b>	

Transects	Baseline	NEW MOON															
		Oct 20 – Mar 21				Mar 21- Aug 21				Aug 21- Oct 21				Oct 20 -Oct 21			
		Acc	Ero	Total	%	Acc	Ero	Total	%	Acc	Ero	Total	%	Acc	Ero	Total	%
T1	0.147	7.10	-7.19	-0.09	-0.12	2.66	-7.06	-4.40	-5.72	9.92	-0.24	9.68	13.34	6.74	-1.55	5.19	6.73
T2	-0.347	3.10	-12.82	-9.72	-13.15	8.66	-1.74	6.92	10.80	6.00	0	6.00	8.04	5.64	-2.44	3.20	3.97
T3	0.082	11.62	0	11.62	22.76	12.21	0	12.21	19.48	0.24	-2.31	-2.07	-2.77	21.77	0	21.77	42.61
T4	0.009	4.87	-5.93	-1.06	-1.18	4.17	-0.56	3.61	4.07	2.59	-0.07	2.52	2.73	5.90	-0.84	5.06	5.64
T5	0.205	1.00	-7.29	-6.29	-7.24	8.66	-0.91	7.75	9.62	6.55	-0.10	6.45	7.30	9.57	-1.65	7.92	9.12
<b>TOTAL</b>		<b>27.69</b>	<b>-33.23</b>	<b>-5.54</b>		<b>36.36</b>	<b>-10.27</b>	<b>26.09</b>		<b>25.3</b>	<b>-2.72</b>	<b>22.58</b>		<b>49.62</b>	<b>-6.48</b>	<b>43.14</b>	

rates at  $-3.13\text{m}^3/\text{m}$  (-4.61%) and  $-3.63\text{m}^3/\text{m}$  (-4.19%), respectively. From the data in Table 2, it was apparent that during pre-monsoon, most of the transect at the site underwent an accretion process from March 2021 to October 2021. Interestingly, during the pre-monsoon period in the New Moon phases, all the transects were found to lost their sediment, except Transect 3. Transect 3 revealed that sedimentation occurred at the rate of  $11.62\text{ m}^3/\text{m}$  (22.76%). In the post-monsoon period, most of the transect experienced an accretion process, indicating sediment deposition. However, Transects 1 and 3 showed erosion, with erosion rates of  $-4.40\text{m}^3/\text{m}$  (-5.72%) and  $-2.07\text{m}^3/\text{m}$  (-2.77%), respectively. In comparison, for the Full Moon and New Moon phase, the Full Moon phase had the highest accretion rate with  $82.89\text{ m}^3/\text{m}$  and  $49.62\text{ m}^3/\text{m}$ , respectively. However, the result revealed that during the New Moon, the erosion rate was slightly higher at the rate of -6.48 m compared to the Full Moon erosion rate of  $-1.87\text{m}^3/\text{m}$ .

The findings of the beach volume analysis conducted along the coastal area during the Full Moon and New Moon phases, spanning from October 2020 to October 2021, for five designated stations, are presented in Table 3. Notably, the quantified beach volume at Pantai Batu Buruk exhibited a range between  $4.688\text{ m}^3/\text{m}$  (T1) and  $0.076\text{ m}^3/\text{m}$  (T5) across the designated transects (T1 to T5). Throughout the Full Moon phase, the beach volume showcased the most substantial variability, with values ranging from  $4.668\text{ m}^3/\text{m}$  (T4) as the highest to  $0.076\text{ m}^3/\text{m}$  (T1) as the lowest. Remarkably, the collective average beach volume for all five transects was computed to be  $2.594\text{ m}^3/\text{m}$ ; (Table 3). The

standard error of mean (SEM) ranged from 0.060 to 0.048, corresponding to mean and indicating precision, suggesting less variability. To ascertain any statistically significant distinctions in the spatial and temporal analyses between the Full Moon and New Moon phases, a Kruskal–Wallis test, followed by the Dunn post-hoc analysis, was executed. Table 4 shows the results from this rigorous statistical assessment revealed that all transects exhibited negligible differences in beach volume when compared to each other (Kruskal–Wallis test,  $p = 0.0001$ ). This signified that the beach volume remained relatively consistent across the cyclic monsoonal season, with no significant variations discerned between the different transects.

Throughout one full cyclic monsoon season (Table 2), most of the transects experienced accretion and erosion trends in both phases (i.e., Full Moon and New Moon). However, the result highlighted that during the pre-monsoon period, the beach experienced a greater erosion rate during the New Moon phase. In contrast, the volume profile results on Full Moon Phases had greater accretion rate during pre-monsoon and post-monsoon period. The distinctive monsoon season influenced the beach response, thereby affecting the dynamics of beach volume in each of the transects at the Batu Buruk beach areas.

The higher trends of erosion resulted on New Moon phases during pre-monsoon. During pre-monsoon (Oct 20- Mac 21), the beach experienced substantial sediment loss, distinguishing it from post-monsoon season. The NEM monsoon generated high energy of waves, tides and currents which depleted beach volume (Azid et al. 2015). The

**Table 3** The descriptive analysis of minimum, maximum, mean, standard deviation (SD) and standard error of mean (SEM) in Full Moon and New Moon phases

Moon Phases	Transect 1	Transect 2	Transect 3	Transect 4	Transect 5
<b>a) Full Moon</b>					
Minimum	0.076	0.334	0.457	0.582	0.237
Maximum	4.130	4.356	4.175	4.688	3.808
Mean	2.348	2.556	2.581	2.996	2.489
Standard Deviation (SD)	1.103	1.060	0.943	1.115	1.000
Standard Error of Mean (SEM)	0.056	0.051	0.053	0.060	0.048
<b>b) New Moon</b>					
Minimum	0.354	0.058	0.073	1.156	0.065
Maximum	4.123	4.399	4.156	4.701	3.789
Mean	2.413	2.475	2.515	3.154	2.434
Standard Deviation (SD)	1.053	1.133	0.970	1.027	1.031
Standard Error of Mean (SEM)	0.054	0.054	0.055	0.055	0.050

combination of spring tide force and monsoonal influence especially during NEM led to a substantial loss of beach volume (Qian et al. 2019) at most transects during New Moon. On Full Moon phase, the beach volume result showed a substantial gain in sediment during pre-monsoon compared to New Moon phases during pre-monsoon (Oct 20–Mac 21). Our findings diverged from prior research, which associated beach erosion with Full Moon phase due to the rise of wave energy and tidal ranges (Banno and Kuriyama 2020; Darsan 2013). The interplay of these natural physical forces, such as waves, tides, and winds, alongside the seasonal monsoonal variations, underscores the complex and dynamic nature of coastal processes in the studied region. Understanding

these mechanisms is crucial for coastal management and conservation efforts, as it provides valuable insights into the response of the coastal environment to various climatic conditions and highlights the importance of considering these factors when assessing coastal vulnerability and implementing appropriate mitigation strategies.

### Interpretation of Lunar Cycle Impact of Beach Volume Changes and Sediment Exchanges

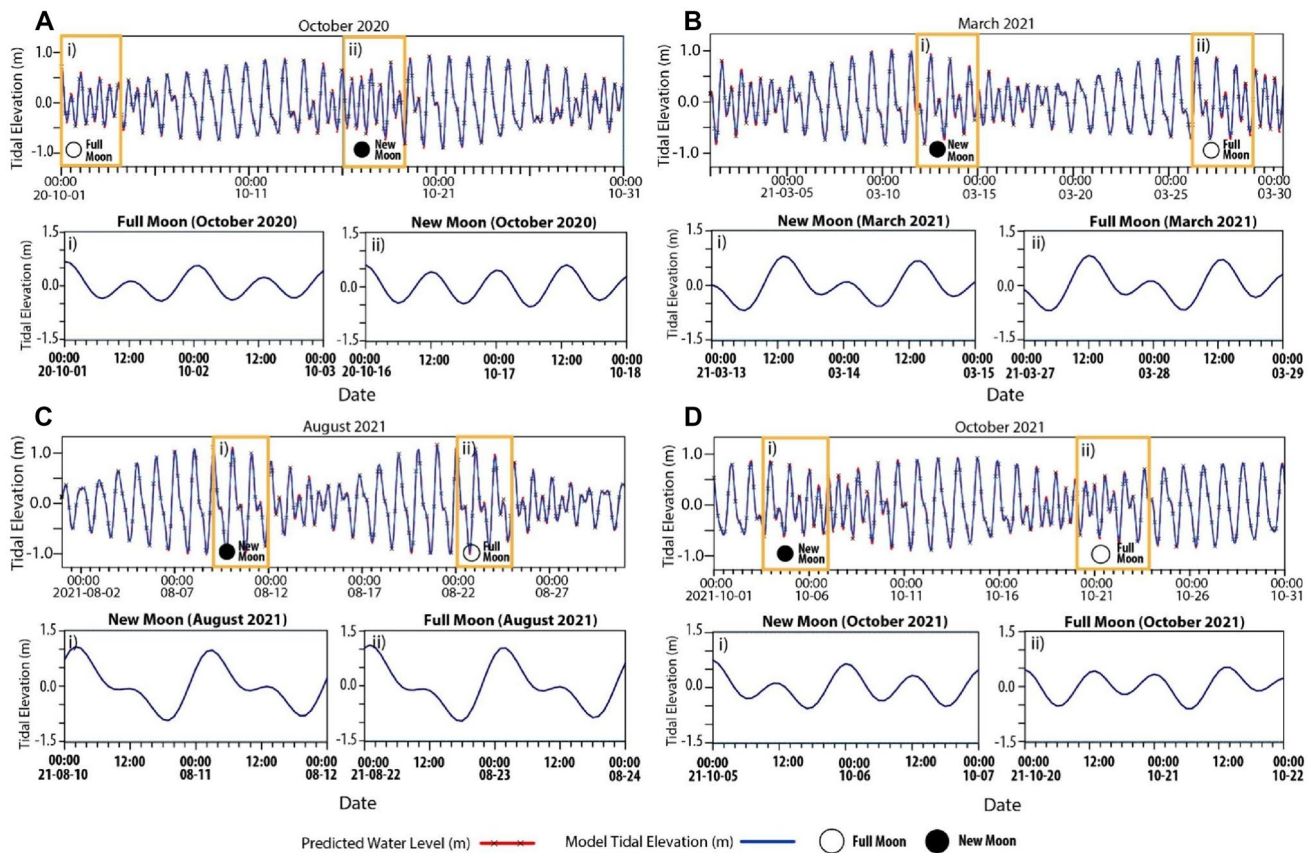
The hydrodynamics simulation presented in Fig. 5(A–D) showcased the results in the vicinity of Kuala Terengganu, particularly on the tidal elevation data for each month during

**Table 4** Post-hoc test of beach volume by within transect (Full Moon and New Moon)

FULL MOON	October 2020	March 2021	August 2021	October 2021	NEW MOON	October 2020	March 2021	August 2021	October 2021
<b>Transect 1</b>					<b>Transect 1</b>				
October 2020	●	●	●	●	October 2020	●	●	●	●
March 2021	●	●	●	●	March 2021	●	●	●	●
August 2021	●	●	●	●	August 2021	●	●	●	●
October 2021	●	●	●	●	October 2021	●	●	●	●
<b>Transect 2</b>					<b>Transect 2</b>				
October 2020	●	●	●	●	October 2020	●	●	●	●
March 2021	●	●	●	●	March 2021	●	●	●	●
August 2021	●	●	●	●	August 2021	●	●	●	●
October 2021	●	●	●	●	October 2021	●	●	●	●
<b>Transect 3</b>					<b>Transect 3</b>				
October 2020	●	●	●	●	October 2020	●	●	●	●
March 2021	●	●	●	●	March 2021	●	●	●	●
August 2021	●	●	●	●	August 2021	●	●	●	●
October 2021	●	●	●	●	October 2021	●	●	●	●
<b>Transect 4</b>					<b>Transect 4</b>				
October 2020	●	●	●	●	October 2020	●	●	●	●
March 2021	●	●	●	●	March 2021	●	●	●	●
August 2021	●	●	●	●	August 2021	●	●	●	●
October 2021	●	●	●	●	October 2021	●	●	●	●
<b>Transect 5</b>					<b>Transect 5</b>				
October 2020	●	●	●	●	October 2020	●	●	●	●
March 2021	●	●	●	●	March 2021	●	●	●	●
August 2021	●	●	●	●	August 2021	●	●	●	●
October 2021	●	●	●	●	October 2021	●	●	●	●

● The results are not statistically significant, as the P-value does not exceed  $\alpha = 0.05$   
 ● The results are statistically significant, as the P-value does exceed  $\alpha = 0.05$





**Fig. 5** The water level fluctuation at Batu Buruk beach area (A) October 2020 (Full Moon and New Moon) (B) March 2021 (Full Moon and New Moon) (C) August 2021 (Full Moon and New Moon) (D) October 2021 (Full Moon and New Moon)

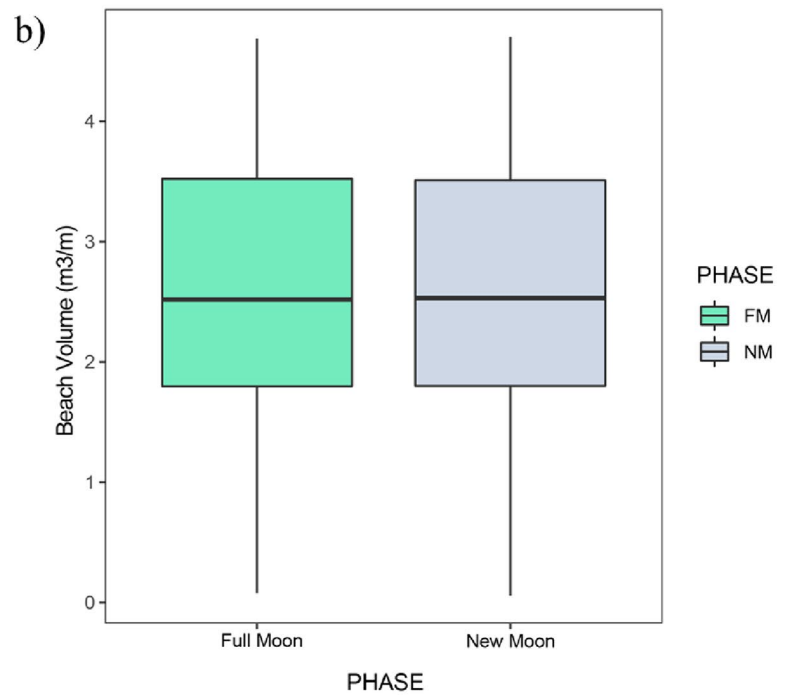
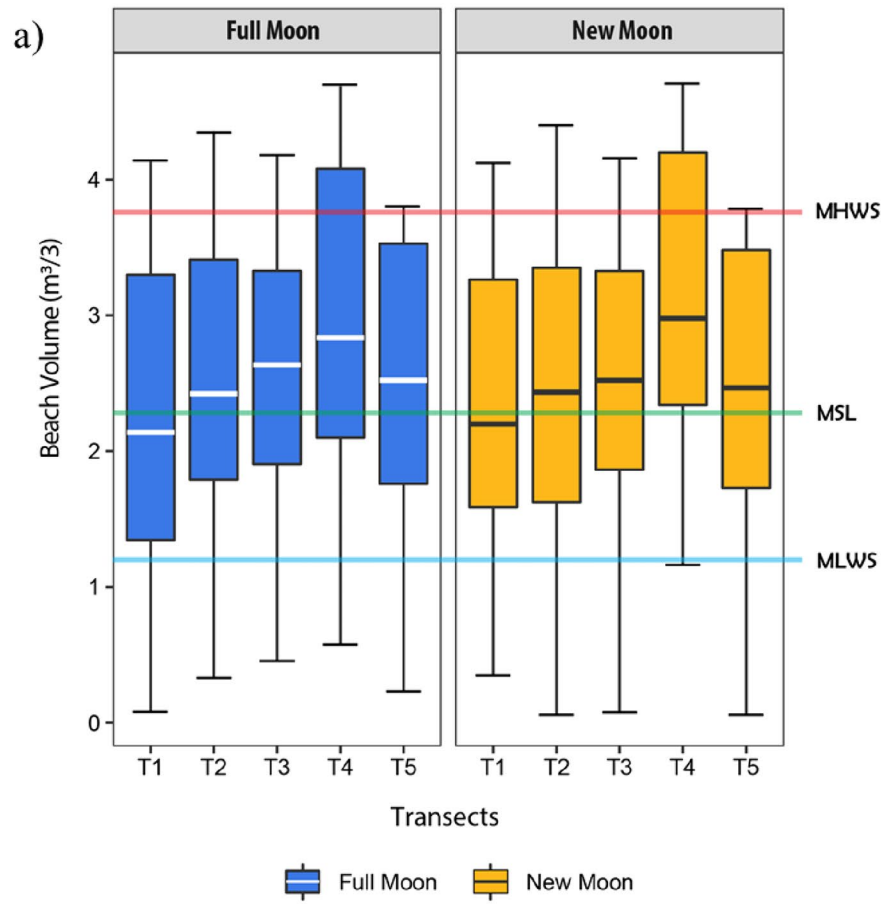
the Full Moon and New Moon phase. This data serves to demonstrate the spring tide condition. The model simulation and predicted water level showed the suitability of the water level condition which corresponded to field conditions.

The analysis revealed that the water level showed significant variations in the tidal range between the Full Moon and New Moon phases in the vicinity of Kuala Terengganu. Based on the data collected during the Full Moon phase, October 2020 showed the lowest tidal range, whereas August 2021 recorded the highest tidal range, with 1.121 m, and 2.076 m, respectively. On the other hand, during the New Moon phase, the result revealed that October 2021 displayed the lowest tidal range while August 2021 showcased the highest tidal range. The values for these tidal ranges were recorded at 1.323 m and 2.003 m, respectively.

Figure 4 revealed the changes of baseline October 2020–October 2021, that during New Moon phases, most of the transect showed sediment loss around the upper swash zone part. As Transect 2 shows the highest value of erosion rate with  $-2.44\text{m}^3/\text{m}$  during new moon phases while Transect 4 shows the highest value of accretion rate during the full moon with  $27.90\text{m}^3/\text{m}$ . Through interpretation, the deposition of the sediment was settling at Transect 3 in

the both phases. The sediment movement is from the north to the south region of the study area. In the analysis, the accumulation of sediment where the sediment was settled down around the transect 3 area in both phases. The present study focuses on investigating the influence of lunar phases, specifically the Full Moon and New Moon phases, on beach volume variations during the seasonal monsoon period, which encompasses the Inter-monsoon (IM), Southwest Monsoon (SWM) and Northeast Monsoon (NEM) (Fig. 6.a). The research was conducted from October 2020 to October 2021, covering an extensive time frame to capture the effects of different lunar phases and monsoon seasons. At the selected survey site, beach volume measurements were obtained across five designated transects during both the Full Moon and New Moon phases. The beach volume data recorded during the Full Moon phase ranged from  $4.688\text{m}^3/\text{m}$  to  $0.076\text{m}^3/\text{m}$ , while during the New Moon phase, the beach volume varied between  $4.701\text{m}^3/\text{m}$  and  $0.058\text{m}^3/\text{m}$  (Table 3). A noteworthy observation was made in March 2021, when the lowest beach volume value of  $0.058\text{m}^3/\text{m}$  was recorded, indicating a potential correlation between lunar phases and beach volume dynamics. To rigorously analyse the data and explore potential variations between

**Fig. 6** a) Beach volume on the Full Moon and New Moon between transects b) Beach volume in Full Moon and New Moon



spatial and temporal analyses, a Kruskal–Wallis test was performed, followed by the Dunn post-hoc analysis.

The results (Table 5) revealed that Transects T1, T3, and T5 exhibited distinguishable beach volume changes throughout the seasonal monsoon, leading to an insignificant difference in the temporal studies ( $X^2=40.22$ ,  $d.f=3$ ,  $p=0.0001$ ). However, stations T2 and T3 showed significant results with relatively similar beach volume changes during the Full Moon phases ( $X^2=6.209$ ,  $d.f=3$ ,  $p=0.0001$ ). In contrast, during the New Moon phases, the beach volume changed across all transects, demonstrating a consistent pattern throughout the seasonal monsoon, with the exception of station T3, which exhibited relatively different changes (Kruskal-Walis test,  $p=0.001$ ). Moreover, it was evident that the impact of beach volume changes during the New Moon phase was comparatively less significant on a limited number of transects compared to the Full Moon phase. The Full Moon phase exerted the most substantial effect on transects at the survey site, potentially suggesting that lunar phases might play a crucial role in modulating beach volume dynamics during the monsoonal season.

To quantify the difference between the Full Moon and New Moon phases (Fig. 6.b) with respect to beach volume changes, a Wilcoxon signed-rank test was employed. The statistical analysis yielded a highly significant difference between the Full Moon and New Moon phases in terms of beach volume variations ( $p < 0.0001$ ), reinforcing the notion that lunar phases indeed influenced beach volume dynamics during the monsoonal season.

The spring tide events during the lunar cycle phase induced modification to the beach and led to the sediment exchange in cross-shore profile and littoral cell region. Cross-shore sediment exchange predominantly corresponded with erosion during New Moon phase and accretion at Full Moon phase. Littoral sediment exchanges were demonstrated as the sediment appeared to show deposition pattern from

northern to southern region along the coast of Batu Buruk beach. The analysis highlighted that there was a significant variation of beach volume dynamics between spatial (i.e., transects) and temporal factor, which was lunar phases.

One of the key factors why sediment accumulations along the cross-shore profile took place during Full Moon phase is due to the low wave notion. These lower energetic wave condition generated longer swell waves which developed small transferring force, that facilitated deposition sediment within the upper swash zone region (Davidson-Arnott and Bauer 2021). In contrast, during the New Moon phase, most transects experienced erosion within the upper swash region. Interestingly, earlier investigation has suggested that the New Moon phases tend to generate more substantial tidal action compared to the Full Moon phase (Abarca et al. 2013). This interconnection of coastal influence (e.g., Storm surge and large wave) could elevate the sediment loss (David Kriebel and Dean 1993). This research contributes valuable insights into the intricate relationship between lunar phases, tidal dynamics, and their consequential impact on beach morphology and volume. Understanding these complex interactions is of utmost importance in comprehending coastal processes.

In this present study area, sediment movement was observed to occur from north to south region. Previous research (Ariffin et al. 2019, 2020) has also demonstrated that seasonal variation contributes to sediment shifting from one area to another area. The sediment dynamics in East Coast of Terengganu is primarily influenced by surface currents, which flow southward in the northwest Monsoon (NEM) and reverse direction to the north during the southwest monsoon (SWM). Despite the fact that the current flow to the north during the southwest period, the current change has the similar strength to the southward (Akhir and Jawchuen 2011). The reason why the sediment was settling down at Transect 3 was justified by the spatial variation of cross shore profile which created a limitation of availability for the sediment to be transported to another transects (Tamura et al. 2010; Warrick 2020). However, for this research, a notable and further investigation are needed to show the flow direction in the natural beach settings during Full Moon and New Moon periods through modeling approach as this paper only focuses on the tidal effect toward beach morphology conditions.

The constant interaction between sediment movement, coastal currents, and wave action drives the dynamic nature of coastal profiles and sediment distribution. Understanding the complexities of littoral drift and its influence on coastal morphology is crucial for coastal management and erosion control strategies. Monitoring and comprehending the sediment transport patterns can aid in developing effective measures to protect and conserve coastal environments, ensuring sustainable coastal development and preservation of coastal ecosystems.

**Table 5** Kruskal Wallis Analysis between Transect 1 to Transect 5 in Full Moon and New Moon phases

Moon Phases	$X^2$	$p$ -value	$X^2$ crit
<b>a) Full Moon</b>			
Transect 1	10.840	0.013	7.815
Transect 2	6.209	0.102	7.815
Transect 3	40.221	<0.0001	7.815
Transect 4	39.704	<0.0001	7.815
Transect 5	6.419	0.093	7.815
<b>b) New Moon</b>			
Transect 1	5.226	0.156	7.815
Transect 2	5.226	0.156	7.815
Transect 3	38.070	<0.0001	7.815
Transect 4	1.762	0.623	7.815
Transect 5	5.228	0.156	7.815

## Conclusion

These short temporal time frames provided an insight into understanding the lunar cycle effects on natural beach morphological changes during spring tide. The integration of tidal influence has significantly impacted beach morphology in meso-tidal setting changes in the upper swash zone and lower swash zone area to loss and deposit, respectively. The result of investigations showed a great reduction of sediment during the pre-monsoon period in contrast with the post-monsoon period. The interpretation movement of sediment showed that the process of littoral current transported the sediment from north to south areas and further convey through hydrodynamics modelling approach to assess the flow during spring tide especially during Full Moon and New Moon phases. The findings provided evidence based on the natural process of beach recovery as the ground research was distant from human intervention activities. This research will act as a base for future studies to mitigate the risk of coastal hazards, especially erosion on a regional scale for the East Coast of Peninsular Malaysia. Furthermore, for the long-term coastal management and prediction of coastal hazards, it is crucial to comprehend the processes through which predictable water-level variations lead to beach erosion. Thus, this study suggests for a longer time frame of monitoring survey to reduce the gap in data for robust analysis to gain more understanding on the dynamics of the beach.

**Abbreviations** Northeast Monsoon: (NEM); Southwest Monsoon: (SWM); Inter-monsoon: (IM)

**Acknowledgements** This work was supported by the Ministry of Higher Education (MOHE) of Malaysia under the Fundamental Research Grant Scheme (FRGS) FRGS/1/2022/WAB02/UMT/02/1. The authors would also like to acknowledge the editors and an anonymous reviewer, who contributed immensely to improving the quality of this publication. The authors are also grateful to all Coastal Gamers members, INOS, FSSM-UMT for the research facilities, technical assistance, and moral support provided to the team in crafting this article.

**Author Contribution** Muhammad Fadhli Harris: Conceptualization, Writing – Original Draft, Methodology, Investigation, Visualization, Data Curation, Formal Analysis. Muhammad Izuan Nadzri: Writing – Review & Editing. Ku Mohd Kalkausar Ku Yusof: Writing – Review & Editing, Software, Formal Analysis, Validation, Resources. Wan Amrul Jaahiz Abd Razak: Investigation and resources. Mohamad Hakim Mohd Shukri: Investigation and resources. Nor Bakhiah Baharim: Writing – Review & Editing. Azizi Ali: Writing – Review & Editing, Validation, Resources. Effi Helmy Ariffin: Writing – Review & Editing, Investigation, Software, Validation, conceptualization, Supervision, Project administration, Funding acquisition.

**Funding** This work was funded by the Ministry of Higher Education (MOHE) of Malaysia under the Fundamental Research Grant Scheme (FRGS) FRGS/1/2022/WAB02/UMT/02/1.

**Availability of Data and Materials** Not applicable.

## Declarations

**Ethics Approval** Not Applicable.

**Consent to Participate** Not Applicable.

**Consent for Publication** Not Applicable.

**Competing Interests** The authors declare no competing interests.

## References

- Abarca E, Karam H, Hemond HF, Harvey CF (2013) Transient groundwater dynamics in a coastal aquifer: The effects of tides, the lunar cycle, and the beach profile. *Water Resour Res* 49(5):2473–2488. <https://doi.org/10.1002/wrcr.20075>
- Akhir MF, Jawchuen Y (2011) Seasonal variation of water characteristics during inter-monsoon along the East Coast of Johor. *J Sustain Sci Manag* 6(2). <https://www.researchgate.net/publication/255484677>
- Ariffin EH, Sedrati M, Akhir MF, Daud NR, Yaacob R, Husain ML (2018) Beach morphodynamics and evolution of monsoon-dominated coasts in Kuala Terengganu, Malaysia: Perspectives for integrated management. *Ocean Coast Manag* 163:498–514. <https://doi.org/10.1016/j.ocecoaman.2018.07.013>
- Ariffin EH, Sedrati M, Akhir MF, Norzilah MNM, Yaacob R, Husain ML (2019) Short-term observations of beach Morphodynamics during seasonal monsoons: two examples from Kuala Terengganu coast (Malaysia). *J Coast Conserv* 23(6):985–994. <https://doi.org/10.1007/s11852-019-00703-0>
- Ariffin EH, Sedrati M, Akhir MF, Yaacob R, Husain ML (2016) Open Sandy Beach Morphology and Morphodynamic as Response to Seasonal Monsoon in Kuala Terengganu, Malaysia. *J Coast Res* 75(sp1):1032–1036. <https://doi.org/10.2112/SI75-207.1>
- Ariffin EH, Zulfakar MSZ, Redzuan NS, Mathew MJ, Akhir MF, Baharim NB, Awang NA, Mokhtar NA (2020) Evaluating the effects of beach nourishment on littoral morphodynamics at Kuala Nerus, Terengganu (Malaysia). *J Sustain Sci Manag* 15(5):29–42. <https://doi.org/10.46754/JSSM.2020.07.005>
- Awang NA, Jusoh WHW, Hamid MRA (2014) Coastal erosion at Tanjung Piai, Johor, Malaysia. *J Coast Res* 71(sp1):122–130. <https://doi.org/10.2112/SI71-015.1>
- Azid A, Noraini C, Hasnam C, Juahir H, Amran MA, Toriman E, Khairul M, Kamarudin A, Shakir A, Saudi M, Gasim MB, Dasuki Mustafa A (2015) Coastal erosion measurement along Tanjung Lumpur to Cherok Paloh, Pahang during the northeast monsoon season. *J Teknol* 74(1):22–34. <https://www.jurnalteknologi.utm.my>
- Banno M, Kuriyama Y (2020) Supermoon drives beach morphological changes in the swash zone. *Geophys Res Lett* 47(22):e2020GL089745. <https://doi.org/10.1029/2020GL089745>
- Barnard PL, Hoover D, Hubbard DM, Snyder A, Ludka BC, Allan J, Kaminsky GM, Ruggiero P, Gallien TW, Gabel L, McCandless D, Weiner HM, Cohn N, Anderson DL, Serafin KA (2017) Extreme oceanographic forcing and coastal response due to the 2015–2016 El Niño. *Nat Commun* 8. <https://doi.org/10.1038/ncomms1436>
- Barnard PL, Short AD, Harley MD, Splinter KD, Vitousek S, Turner IL, Allan J, Banno M, Bryan KR, Doria A, Hansen JE, Kato S, Kuriyama Y, Randall-Goodwin E, Ruggiero P, Walker IJ, Heathfield DK (2015) Coastal vulnerability across the Pacific dominated by El Niño/Southern Oscillation. *Nat Geosci* 8(10):801–807. <https://doi.org/10.1038/ngeo2539>

- Brand E, Montreuil AL, Houthuys R, Chen M (2020) Relating hydrodynamic forcing and topographic response for tide-dominated sandy beaches. *J Mar Sci Eng* 8(3):151. <https://doi.org/10.3390/jmse8030151>
- Castelle B, Harley M (2020) Extreme events: impact and recovery. *Sandy Beach Morphodynamics*. Elsevier, pp 533–556. <https://doi.org/10.1016/b978-0-08-102927-5.00022-9>
- Cohen O (2014) Profiler 3.1 XL, a free software for topographical profile construction and analysis in Microsoft Excel. Fifth International Symposium: Monitoring of Mediterranean coastal areas: problems and measurement techniques. Livorno, Italy
- Darsan J (2013) Beach morphological dynamics at Cocos Bay (Manzanilla), Trinidad. *Atl Geol* 49:151–168. <https://doi.org/10.4138/atlgeol.2013.008>
- David Kriebel BL, Dean RG (1993) Convolution method for time-dependent beach-profile response. *J Waterw Port Coast Ocean Eng* 119(2):204–227
- Davidson-Arnott RGD, Bauer BO (2021) Controls on the geomorphic response of beach-dune systems to water level rise. *J Great Lakes Res* 47(6):1594–1612. <https://doi.org/10.1016/j.jglr.2021.05.006>
- Davidson-Arnott RG, MacQuarrie K, Aagaard T (2005) The effect of wind gusts, moisture content and fetch length on sand transport on a beach. *Geomorphology* 68(1–2):115–129. <https://doi.org/10.1016/j.geomorph.2004.04.008>
- Deepika B, Jayappa KS (2017) Seasonal beach morphological changes along the coast of Udipi district, west coast of India. *J Coast Conserv* 21(4):545–559. <https://doi.org/10.1007/s11852-017-0529-1>
- DHI (2017) MIKE-21 Toolbox Global Tide Model- Tidal Prediction, 116. <https://www.mikepoweredbydhi.com/download/mike-by-dhi-tools/coastandseatoools/global-tide-model>
- Dong WS, Ariffin EH, Saengsupavanich C, Mohd Rashid MA, Mohd Shukri MH, Ramli MZ, Miskon MF, Jeffery MH, Yunus K, Ghazali NHM, Md Noh MN (2023) Adaptation of coastal defence structure as a mechanism to alleviate coastal erosion in monsoon dominated coast of Peninsular Malaysia. *J Environ Manag*. <https://doi.org/10.1016/j.jenvman.2023.117391>
- ECMWF (2017) ECMWF Reanalysis v5 (ERA5). <https://www.ecmwf.int/en/forecasts/dataset/ecmwf-reanalysis-v5>
- Ghazali NHM (2006) Coastal erosion and reclamation in Malaysia. *Aqua Ecosyst Health Manag* 9(2):237–247. <https://doi.org/10.1080/14634980600721474>
- Ghazali NM (2004) Beach nourishment and its impact on holiday beaches. Seminar Sumberjaya Pinggir Pantai dan Pelancongan: Isu dan Cabaran
- Gratiot N, Anthony EJ, Gardel A, Gauchere C, Proisy C, Wells JT (2008) Significant contribution of the 18.6 year tidal cycle to regional coastal changes. *Nat Geosci* 1(3):169–172. <https://doi.org/10.1038/ngeo127>
- Kaiser MFM, Frihy OE (2009) Validity of the equilibrium beach profiles: Nile Delta Coastal Zone, Egypt. *Geomorphology* 107(1–2):25–31. <https://doi.org/10.1016/j.geomorph.2006.09.025>
- Kok PH, Akhir MF, Qiao F (2019) Distinctive characteristics of upwelling along the Peninsular Malaysia's east coast during 2009/10 and 2015/16 El Niños. *Cont Shelf Res* 184:10–20. <https://doi.org/10.1016/j.csr.2019.07.004>
- Leung Chee C, Singh A, Persad R, Darsan J (2014) The influence of tidal currents on coastal erosion in a tropical micro-tidal environment—the case of Columbus Bay, Trinidad. *Global J Sci Front Res* 14(5)
- Mohd Yusoff NA, Ramli NL, Mohamed MR (2015) Investigation of the potential harnessing tidal energy in Malaysia. *J Eng Appl Sci* 10(21). <https://www.arpnjournals.com>
- Muslim AM, Hossain MS, Razman N, Nadzri MI, Khalil I, Hashim M (2019) Shoreline mapping: How do fuzzy sigmoidal, bayesian, and demspster-shafer classifications perform for different types of coasts? *Rem Sens Lett* 10(1). <https://doi.org/10.1080/2150704X.2018.1523583>
- Narashid RH, Zakaria MA, Mohd FA, Pa'Suya MF, Talib N, Ariffin EH (2021) Effect of erosion and accretion on beach profile in Kuala Terengganu coastal areas. *IOP Conf Ser Earth Environ Sci* 620(1):012008. <https://doi.org/10.1088/1755-1315/620/1/012008>
- Norsakinah Selamat S, Maulud NA K, Amri Mohd F, Aziz Rahman AA, Khairul Zainal M, Aqiff Abdul Wahid M, Liyana Hamzah M, Helmy Ariffin E, Aslinda Awang A (2019) Multi method analysis for identifying the shoreline erosion during northeast monsoon season. *J Sustain Sci Manag* 14:43–54
- Pradhan S, Mohanty PK, Samal RN, Kar PK, Sahoo RK, Pradhan U, Baral R (2022) Spit and inlet dynamics, beach morphology, and sediment characteristics along shore front of Chilika lagoon, East coast of India. *Geo-Mar Lett* 42(18). <https://doi.org/10.1007/s00367-022-00741-y>
- Pye K, Blott SJ (2008) Decadal-scale variation in dune erosion and accretion rates: An investigation of the significance of changing storm tide frequency and magnitude on the Sefton coast, UK. *Geomorphology* 102(3–4):652–666. <https://doi.org/10.1016/j.geomorph.2008.06.011>
- Qian S, Aizhi C, Hongshuai Q (2019) Sandy coast erosion under the conditions of a storm surge combined with a spring tide. *IOP Conf Ser Earth Environ Sci* 369(1). <https://doi.org/10.1088/1755-1315/369/1/012002>
- Quartel S, Kroon A, Ruessink BG (2008) Seasonal accretion and erosion patterns of a microtidal sandy beach. *Mar Geol* 250(1–2):19–33. <https://doi.org/10.1016/j.margeo.2007.11.003>
- R Development Core Team (2011) R: A language and environment for statistical computing. R Foundation for Statistical Computing, Vienna. <http://www.R-project.org>
- Ramos CC, Ranieri LA (2021) Morphology and Sedimentation of an Amazon Estuarine Beach (Marahú/PA) during different tide amplitude range. *Brazilian J Phys Geog* 14(5):2916–2930. <https://doi.org/10.26848/RBGF.V14.5.P2916-2930>
- Shariful F, Sedrati M, Ariffin EH, Shubri SM, Akhir MF (2020) Impact of 2019 Tropical Storm (Pabuk) on Beach Morphology, Terengganu Coast (Malaysia). *J Coast Res* 95(sp1):346. <https://doi.org/10.2112/SI95-067.1>
- Singh A, Jha MK (2012) A data-driven approach for analyzing dynamics of tide-aquifer interaction in coastal aquifer systems. *Environ Earth Sci* 65(4):1333–1355. <https://doi.org/10.1007/s12665-011-1383-3>
- Suanez S, Yates ML, Floc'h F, Accensi M (2023) Using 17 years of beach/dune profile monitoring to characterize morphological dynamics related to significant extreme water level events in North Brittany (France). *Geomorphology*. <https://doi.org/10.1016/j.geomorph.2023.108709>
- Tamura T, Horaguchi K, Saito Y, Nguyen VL, Tateishi M, Ta TKO, Nanayama F, Watanabe K (2010) Monsoon-influenced variations in morphology and sediment of a mesotidal beach on the Mekong River delta coast. *Geomorphology* 116(1–2):11–23. <https://doi.org/10.1016/j.geomorph.2009.10.003>
- Warrick JA (2020) Littoral sediment from rivers: patterns, rates and processes of river mouth morphodynamics. *Front Earth Sci*. <https://doi.org/10.3389/feart.2020.00355>
- XLSTAT A (2019) A complete statistical add-in for Microsoft Excel

**Publisher's Note** Springer Nature remains neutral with regard to jurisdictional claims in published maps and institutional affiliations.

Springer Nature or its licensor (e.g. a society or other partner) holds exclusive rights to this article under a publishing agreement with the author(s) or other rightsholder(s); author self-archiving of the accepted manuscript version of this article is solely governed by the terms of such publishing agreement and applicable law.