



Explainable recommendation based on knowledge graph and multi-objective optimization

Lijie Xie¹ · Zhaoming Hu¹ · Xingjuan Cai¹ · Wensheng Zhang² · Jinjun Chen³

Received: 5 December 2020 / Accepted: 26 February 2021 / Published online: 6 March 2021
© The Author(s) 2021

Abstract

Recommendation system is a technology that can mine user's preference for items. Explainable recommendation is to produce recommendations for target users and give reasons at the same time to reveal reasons for recommendations. The explainability of recommendations that can improve the transparency of recommendations and the probability of users choosing the recommended items. The merits about explainability of recommendations are obvious, but it is not enough to focus solely on explainability of recommendations in field of explainable recommendations. Therefore, it is essential to construct an explainable recommendation framework to improve the explainability of recommended items while maintaining accuracy and diversity. An explainable recommendation framework based on knowledge graph and multi-objective optimization is proposed that can optimize the precision, diversity and explainability about recommendations at the same time. Knowledge graph connects users and items through different relationships to obtain an explainable candidate list for target user, and the path between target user and recommended item is used as an explanation basis. The explainable candidate list is optimized through multi-objective optimization algorithm to obtain the final recommendation list. It is concluded from the results about experiments that presented explainable recommendation framework provides high-quality recommendations that contains high accuracy, diversity and explainability.

Keywords Recommendation system · Knowledge graph · Multi-objective optimization · Explainability

Introduction

Recommendation system (RS) is essentially an information filtering technology that generates personalized recommendations based on users' historical behaviors. Explainable recommendation system provides target user with reason for recommendations while recommending to target user so as to tell target user the reason for recommendations [32]. An excellent explainable recommendation system can provide an intuitive explanation in a way that is simple for users to reveal reason for recommendations to improve user acceptance and persuasiveness of recommendations. The explainable recommendation system is an effective technology that improves transparency, persuasiveness, effectiveness, credibility as well as users' satisfaction with recommended results [30]. Therefore, explainable recommendation has gradually become an indispensable technology in network applications.

Existing explainable recommendation research is divided into the following two types: one is the way about displaying explanation, and the other is a model that generates

✉ Xingjuan Cai
xingjuancai@163.com

Lijie Xie
lijixiel1@163.com

Zhaoming Hu
hzming11@163.com

Wensheng Zhang
wensheng.zhang@ia.ac.cn

Jinjun Chen
jinjun.chen@gmail.com

¹ School of Computer Science and Technology, Taiyuan University of Science and Technology, Taiyuan, China

² State Key Laboratory of Intelligent Control and Management of Complex System, Institute of Automation, Chinese Academy of Sciences, Beijing, China

³ Swinburne University of Technology, Melbourne, Australia

explainable recommendations. Explainable recommendation based on information source or style is to provide users with information to explain the reason for recommending an item [37]. There are a variety of explainable styles. The basic presentation style is text, which is used to explain the reason for recommendation to the user. Model-based explainable recommendations can provide users with recommendations and explanations through an explainable model. The application of model-based explainable recommendation system is more extensive [21]. In the field of model-based explainable recommendation systems, there are many methods for modeling, including matrix factorization [38], factorization machines [3], deep learning [12], knowledge graph [2], etc.

Knowledge graph is graphical databases which contains a large amount of relationship information between entities and can be used as a convenient way to enrich users and items information [33, 39]. The problem of sparse data interaction between users and items is effectively alleviated by constructing a knowledge graph [39]. The user's historical records and recommendation results are related through the knowledge graph [26], which improves the probability of target users choosing recommended items [18]. Through different types of relationship links in knowledge graph, it is beneficial to the diversity of recommendation results. Therefore, knowledge graph is often used in model-based explainable recommendation system. Catherine [7] presented certain rules to rank entities and combined knowledge graph to generate recommendations and explanations. Ai [1] pointed out a method of using graph embedding for entities, and propose a new method to find a path to generate explanations for target users. Ma [23] summarized the rules between entities from the constructed knowledge graph, and made recommendations based on these rules. Xian [34] proposed a method termed as Strategy Guided Path Reasoning (PGPR), which obtains a recommendation list through a recommendation algorithm and finds an explanation path in the constructed knowledge graph. The explainable recommendation system based on the above methods can improve the explainability of recommendation results to some extent, but the accuracy and diversity of recommendation results cannot be optimized at the same time. Providing users with explainable recommendations while maintaining recommendation performance is a challenge in the field of explainable recommendation systems.

Multi-objective optimization algorithm is to make conflicting objectives as optimal as possible [4, 13, 16, 24, 35]. Multi-objective optimization has applications in various fields [36], such as blockchain [15], modeling [11, 17], and information diffusion [10]. In the field of recommendation systems, multiple recommendation properties are in conflict with each other, but they need to be optimized simultaneously [25]. Hence, combining multi-objective optimization algorithms and recommendation systems for personalized

recommendation is a hot topic [5, 6, 9, 14]. Gong [40] used MOEA to optimize precision and diversity contemporary, and this method can provide multiple recommendations for one or more users at the same time. Wang [31] established a framework combined MOEA that describes the ability of this framework to recommend exact and unpopular items for users. Ribeiro [27] presented a hybrid recommendation model that combed the differences in precision, novelty and diversity of existing recommendation methods. Zheng [8] used SVD to acquire candidate recommendation list for users, and the candidate list about target user obtained by SVD is optimized using immune optimization algorithm to acquire the ultimate final recommendation results. These recommendation models regard objective functions as conflicting, and use MOEA to optimize the objectives synchronously to get the optimal recommendation list. However, most of these recommendation methods, which aim at the precision and diversity about recommendations and ignore the explainability about recommendations.

A framework which can generate recommendations and explanations at the same time (called ERKM) is proposed. The purpose of proposed framework is to boost the explainability, diversity and accuracy of recommendations at the same time so as to comprehensively improve the performance of recommendations. First of all, users and items are connected through the constructed knowledge graph to obtain a candidate list for each target user. Accuracy, diversity and explainability about recommendations are optimized using MOEA contemporary, which ensures both explainability and recommendation performance of recommendation results. For the explainability of recommendation results, a quantitative evaluation indicator is adopted to measure explainability about recommended items by constructing the knowledge graph, which is calculated by user's rating of items and the similarity of attributes between items. To some extent, recommending items in this way will increase the probability of target users accepting the recommended items, which signifies that the recommended items are more explainable for target users. Our contributions are described in the following three aspects.

1. An explainable recommendation framework on the basis of knowledge graph and multi-objective optimization is constructed, which optimizes accuracy, explainability and diversity about recommendations in the meantime.
2. Different semantic relationships are used to connect users and items to construct a knowledge graph. Through these semantic relationships, users' interests can be deeply discovered. A candidate list for each target user is obtained from the constructed knowledge graph.
3. The product of user's rating of item and the similarity of attributes between items is adopted to measure the explainability of recommended item, and at the same

time the corresponding path of recommended item in the knowledge graph is regarded as the basis for explanation.

The remainder about the paper is organized as follows. Section 2 reveals the preliminary. Section 3 demonstrates the presented explainable recommendation framework. Section 4 shows analysis the results about experimental. A case study is given by in Sect. 5. Section 6 illustrates the conclusion.

Preliminary

Knowledge graph

Knowledge graph describes different relationship between entities in a visual way, which can help formal description and understanding relationship between different entities [20]. Knowledge graph is composed of several triples $S = \{e_h, e_t, r\}$, where e_h and e_t represent head node and tail node respectively, and r represents the relationship between head node e_h and tail node e_t . Since knowledge graph provides a better way to manage and utilize massive amounts of information, the application of knowledge graphs has gradually expanded to various fields. In the field of explainable recommendation systems, the potential connections between different entities can be discovered through a knowledge graph, which provides additional information for recommendation. At the same time, knowledge graph connects users and items through different relationships to form a path that provides an explanation basis.

Multi-objective optimization

The best possible solutions in a given area under the constraints of several conflicts or mutual influences are found through multi-objective optimization. It can be stated as:

$$\min f(x) = [f_1(x), f_2(x), \dots, f_n(x)]^T,$$

where $x = [x_1, x_2, \dots, x_m] \in \Omega$, x represents the decision variable, Ω is the decision variable space, the dimension of the decision variable is represented by m , and n denotes the number of objective functions.

Pareto solution is an important concept in multi-objective optimization. It is considered that decision variable x_a dominates decision variable x_b , if these two decision variables meet the following requirements:

$$\{\forall i \in \{1, 2, \dots, n\} f_i(x_a) \leq f_i(x_b)\} \wedge \{\exists j \in \{1, 2, \dots, n\} f_j(x_a) < f_j(x_b)\},$$

$x \in \Omega$ is identified as Pareto optimal solution if there is inexistence other $x^* \in \Omega$ such that $x^* > x$.

All Pareto optimal solutions form the Pareto optimal solution set, which can be described as:

$$PS = \{x \in \Omega | \neg \exists x^* \in \Omega, x^* > x\}.$$

Pareto solutions consist of objective functions mapping to form Pareto front of this problem, that is, Pareto optimal solutions corresponding to objective function value are Pareto optimal front. Pareto optimal front can be described as:

$$PF = \{F(x) | x \in PS\}.$$

Recommendation system (RS) is combined with MOEA to seek the best recommendation lists for target users. Each solution on the Pareto front represents a recommendation list for target users.

Methodology

The framework of explainable recommendation and objective functions to be optimized are introduced in detail. This explainable recommendation framework includes the construction of knowledge graph and three optimization objectives to improve accuracy, diversity, and explainability of recommendation results.

The framework of explainable recommendation

The framework of explainable recommendation based on knowledge graph and multi-objective optimization are introduced. The whole recommendation process can be divided into two procedures. First, knowledge graph is used to connect users and items through different relationships to obtain an explainable candidate list for target user. Then multi-objective optimization algorithm is used to acquire final top-N list. The framework of explainable recommendation as shown in Fig. 1.

The construction of knowledge graph

Knowledge graph is used to associate different entities to explore deeper relationships between the target user and items. The user's satisfaction with recommended items will decrease as the corresponding paths of recommended items increase [29]. In [28], when the length of path is within three hops, it has the best effect. Therefore, three nodes and two

relationships are used to construct knowledge graph. Portion of the final knowledge graph about user A is shown in Fig. 2.

Fig. 1 The framework of explainable recommendation

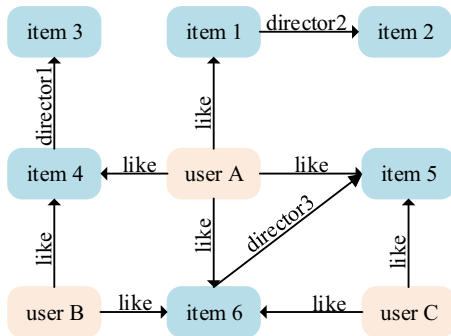
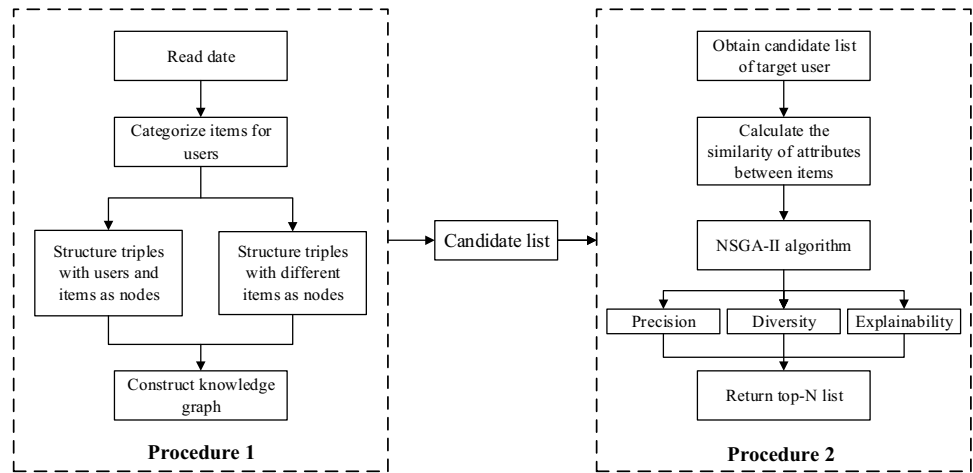


Fig. 2 Portion of the final knowledge graph about user A

Target user is the first node, and item directly connected to the target user is the second node. Items with the same director as the second node are the third node, which form the explainable candidate list for target user. Then explainable candidate list is optimized using the following optimization model to obtain final recommendation list. For example, the third nodes starting from user A includes item 2 and item 3, which are a subset of the candidate list set of user A. Different users will be indirectly connected through items. When making recommendations for a user, all nodes associated with the user are used.

Optimization objectives

Three objective functions optimized in this paper are introduced in detail. Precision is generally accepted as an indicator to measure recommendation performance, which is denoted by the proportion of items that users like in the final recommendations. [40]. The method of calculation is defined as:

$$P_i = \frac{|R_i \cap T_i|}{|R_i|}, \tag{1}$$

where $|R_i|$ denotes the length of final recommendations, and $|R_i \cap T_i|$ is number of items that user i likes in the ultimate recommendation list obtained by explainable recommendation framework.

Diversity denotes the difference between final recommendation lists which is evaluated by calculating the similarity between items in event recommendation lists. The calculation method of diversity is as:

$$D_i = 1 - \frac{\sum m, n \in L_i, m \neq n s(m, n)}{\frac{1}{2}|L_i|(|L_i| - 1)}, \tag{2}$$

where L_i is the recommendation list and $s(m, n)$ is the similarity between item m and item n .

Revised cosine similarity method is used to calculate the similarity between item m and item n . The calculation method of revised cosine similarity is given by

$$s(m, n) = \frac{\sum_{u \in U} (R_{u,m} - \bar{R}_u)(R_{u,n} - \bar{R}_u)}{\sqrt{\sum_{u \in U} (R_{u,m} - \bar{R}_u)^2} \sqrt{\sum_{u \in U} (R_{u,n} - \bar{R}_u)^2}}, \tag{3}$$

where the set of users who both rated m and n are denoted by U , $R_{u,m}$ represents the rating of user u about item m , \bar{R}_u denotes the mean rating about user u .

Explainability indicates an ability to help target users to understand the reason for an item is recommended. Ratings of user i about items and similarity of attributes between items are adopted to measure explainability. The calculation method of explainability is defined as:

$$E_i = \sum_{m=1}^N \frac{r_{i,j_m}}{\text{sum}_-r_i} \times S_{j_m, j'_m}, \tag{4}$$

where N is the length of the recommendation list, r_{i,j_m} is the rating of user i for item j_m , sum_{r_i} is the sum of ratings for all items by user i , item j_m represents an item rated by user i , item j'_m represents an item in the candidate list corresponding to user i , item j_m and item j'_m are nodes on the same path from target user i . S_{j_m,j'_m} is similarity of attributes between item j_m and item j'_m . S_{j_m,j'_m} is calculated as follows:

$$S_{j_m,j'_m} = \frac{|A_{j_m} \cap A_{j'_m}|}{|A_{j_m} \cup A_{j'_m}|}, \tag{5}$$

where A_{j_m} denotes the attributes set of item j_m , and $A_{j'_m}$ is attributes set about item j'_m . The larger value about S_{j_m,j'_m} , the more similar between two items in terms of attributes. Item j'_m obtained in this way is more likely to be selected by user. With the improvement of precision and diversity, it recommends various items that users like to users. The improvement of explainability increases the probability of users choosing recommended items. It is evident that precision, diversity, and explainability improve recommendation performance in three different aspects. The objective functions optimized in this paper are summarized as follows:

$$\begin{cases} \max P_i = \frac{|R_i \cap T_i|}{|R_i|} \\ \max D_i = 1 - \frac{\sum_{m,n \in L_i, m \neq n} ns(m,n)}{\frac{1}{2} |L_i| (|L_i| - 1)} \\ \max E_i = \sum_{m=1}^N \frac{r_{i,j_m}}{\text{sum}_{r_i}} \times S_{j_m,j'_m} \end{cases}$$

Individual representation

Individuals use real number coding, and each solution generated by optimization represents a set of recommended lists. The candidate list is obtained through the knowledge graph. The candidate item number is used to represent individuals. The code of each individual can be represented as

$$X = \{x_1, x_2, \dots, x_D\},$$

where D denotes the length of a recommendation list, x_i represents the number corresponding to randomly selected items in candidate list.

Genetic operators

Crossover and mutation are essential in genetic algorithms. They play a very vital role in finding the global optimal solution. Crossover and mutation methods are described in detail.

Crossover

The single point crossover swaps the right part of the crossover point at a randomly selected position to obtain two new individuals. This paper uses this classic single point crossover method. First, the individuals are randomly divided into father individuals and mother individuals. Then one of the two parts is randomly selected to form two parents, and the two parents are crossed to generate offspring. k is a randomly generated integer between $[1, D]$, the two parents are swapped from k to the end. Since individual represents a set of recommended lists, the elements of each individual can't be repeated. Therefore, for individuals generated by crossover, it is necessary to determine whether there are duplicate elements. The duplicate elements must be eliminated through the following operations. For repeating elements in an offspring, find the position of repeating element corresponding to another parent, and use the element at corresponding position in the parent to replace the repeating element at non-crossing position in child until there is no repeating element in child. For recommended lists P1 and P2, the elements in the red rectangle are swapped to get offspring C1 and C2. The element at corresponding position in P2 are used to replace the repeated elements outside red rectangle of C1. The specific process is shown in Fig. 3.

Mutation

First randomly select a parent. Then randomly generate a positive integer to determine the number of mutations, and select the elements that are not in the parent to replace. Replace the elements in the red rectangle with elements not in the recommended list P1. The specific mutation process is shown in Fig. 4.

Experimentation

Experimental data

The recommendation performance of our presented model is evaluated by calculating three different evaluation indicators on Movielens and Anime datasets.

1. Movielens. The Movielens dataset can be downloaded from <http://www.grouplens.org>. This dataset contains 2113 users, 10,197 movies, 20 movie tags, etc. Users rate movies from 1 to 5 in this dataset.
2. Anime. This dataset about animation can be downloaded from <https://www.kaggle.com/CooperUnion/anime-recommendations-database>. The Anime dataset

Fig. 3 The crossover operator

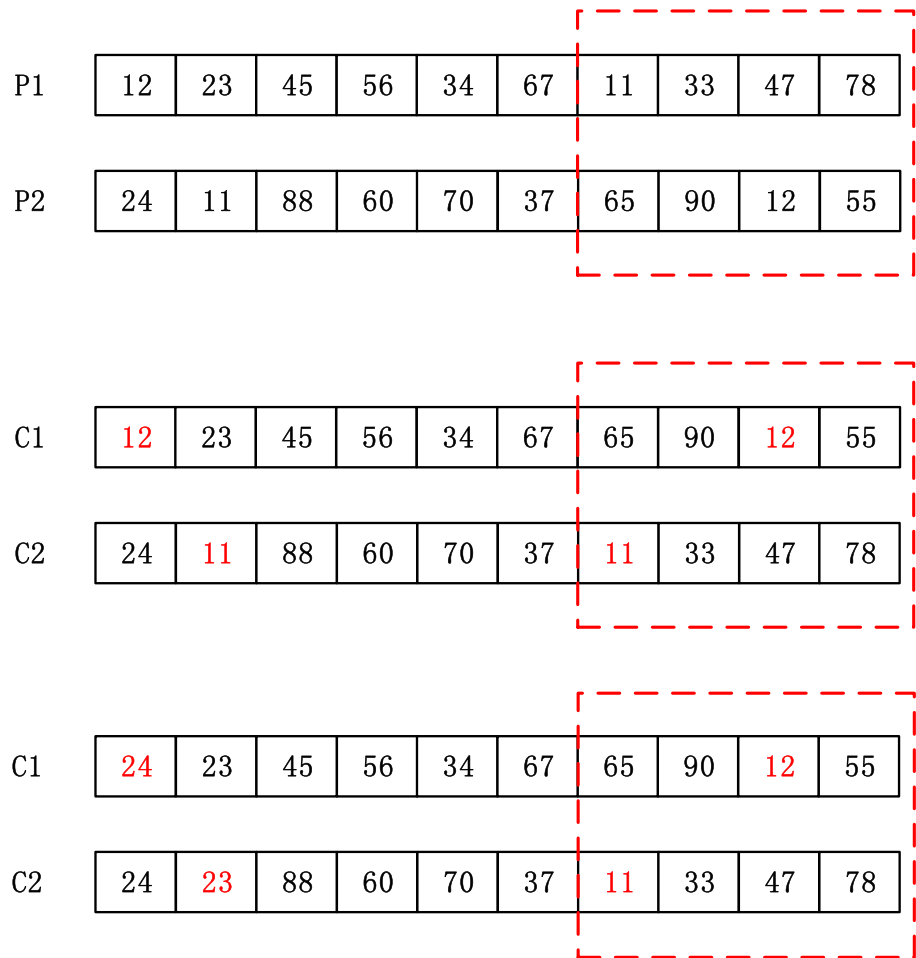
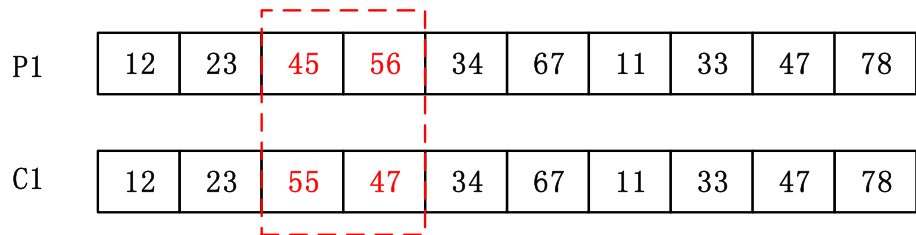


Fig. 4 The mutation operator



includes 73,516 users and 12,294 animations. Ratings range from -1 to 10, and ratings greater than or equal to 1 are retained.

Parameter settings

The parameters needed in following experiment are shown in Table 1.

Evaluation metrics

The recommendation performance about presented model is estimated by calculating Precision, diversity, explainability

Table 1 Parameters setting in multi-objective optimization

Parameters	Meaning	Values
gen	Number of generations	100
Pop	Population size	100
M	Number of objective functions	3
D	Dimensions of decision variables	10
CP	Probability of crossover	1
MP	Probability of mutation	1/D
N	Number of neighbors	20

about target users. Precision, diversity and explainability are calculated using the same calculation methods as in Sect. 3.3. MOEA is used to obtain the ultima recommendations for each target user, but optimal recommendation results can't be selected from this set of recommendation lists. Therefore, the maximum, minimum, and average values of this set of recommendation lists on each evaluation indicator are used to measure the overall performance of the recommendations.

Analysis of experimental results

Comparison of algorithms

NSGA-II, AGE-II, SPEA2, and BCE-IBEA are selected to compare the performance about our model in the first part of experiment. MOEA is used for target users to generate recommendation results that satisfy multiple objective functions at the same time. The recommendation performance of different algorithms is measured by the maximum, minimum and average values on each evaluation indicator. In order to select an algorithm with the best performance more efficiently, maximum, minimum and average values on each evaluation indicator are weighted and summed. Since average values measure the overall performance of all recommended lists, the weight of average values is relatively large. Maximum, minimum, and average values of evaluation indicator are weighted by a ratio of 3:3:4.

Table 2 shows evaluation metrics of four algorithms on 10 randomly selected users. It can be drawn from the table that performance difference of four algorithms is inconspicuous. Among the four algorithms, NSGA-II has 10 evaluation metrics are the best, exceeding three comparison algorithms. At the same time, NSGA-II has the best explainability among five users, which is not achieved by three comparison algorithms. Therefore, NSGA-II is selected for model comparison in the following experiments.

Comparison with other models

IN the second part of experiment, model comparisons are made to compare the performance of DIFFERENT models. 10 users are randomly selected from Movielens dataset and Anime dataset respectively to calculate the values of evaluation metrics.

MF [22], NNIA-RS [19] and MORS [31] are chosen to compare with the model that we proposed.

Table 3 reveals the values of precision on MovieLens dataset. According to Table 3, it is concluded that among the 10 randomly selected users, the mean value of three users is the highest compared with the other three comparison models. The maximum values of ten users are obviously better than the maximum values obtained by MF and NNIA-RS.

Table 2 Metrics on different algorithms

User_id	Metrics	NSGA-II	AGE-II	SPEA2	BCE-IBEA
75	Precision	0.4932	0.4140	0.4588	0.4980
	Explanation	0.1867	0.1338	0.1798	0.1686
	Diversity	1.1467	1.1378	1.1851	1.1545
78	Precision	0.3268	0.3568	0.2648	0.2980
	Explanation	0.0638	0.0471	0.0634	0.0653
	Diversity	1.1777	1.1493	1.3204	1.1978
127	Precision	0.6392	0.6524	0.6168	0.6704
	Explanation	0.3800	0.3536	0.3671	0.3824
	Diversity	1.0562	1.0480	1.0672	1.0527
170	Precision	0.4112	0.4472	0.4908	0.4896
	Explanation	0.1485	0.0951	0.1348	0.1440
	Diversity	1.1856	1.2271	1.2369	1.2258
175	Precision	0.4612	0.2672	0.3708	0.3444
	Explanation	0.0760	0.0737	0.0797	0.0837
	Diversity	1.1803	1.1994	1.1970	1.1858
190	Precision	0.4028	0.3224	0.3852	0.4340
	Explanation	0.1128	0.1246	0.1113	0.1149
	Diversity	1.2275	1.2820	1.2374	1.2226
267	Precision	0.3648	0.2888	0.4100	0.4476
	Explanation	0.0514	0.0362	0.0491	0.0511
	Diversity	1.2389	1.1767	1.1776	1.1984
325	Precision	0.3264	0.2800	0.2856	0.3124
	Explanation	0.0488	0.0350	0.0441	0.0475
	Diversity	1.1909	1.2965	1.2662	1.2801
383	Precision	0.3888	0.3892	0.3620	0.4216
	Explanation	0.0859	0.0710	0.0852	0.0858
	Diversity	1.2030	1.1168	1.1741	1.1990
476	Precision	0.2716	0.3304	0.4236	0.3344
	Explanation	0.0389	0.0326	0.0355	0.0429
	Diversity	1.2282	1.1239	1.1679	1.1935

Bold values indicate that the corresponding evaluation index values are the best

The maximum and average values of 175, 325, and 383 users are better than those obtained by comparison models.

Table 4 demonstrates the values about precision on Anime dataset. A fact can be drawn from the data in Table 2 that mean values about precision obtained by ERKM are mostly the best among the four models. The maximum values of ten users are the best compared to comparison models. The maximum and average values of 18, 19, 22, 28, 42 and 58 users obtained by our model are better than maximum and average values obtained by comparison models.

The scoring sum of items in the recommendation list is used to measure accuracy about recommendations in the multi-objective long-tail item recommendation model MORS, which can better reflect the accuracy of recommendation. On different datasets, the minimum accuracy obtained by MORS is mostly the best compared with

comparison model. The data on Anime dataset is sparse, which cause the performance of MORS on this dataset is degraded.

According to the values about explainability in Table 5, which were calculated using MovieLens dataset, it can be found that the minimum values of the 10 randomly

Table 3 Precision on MovieLens dataset

User_id	MF	MORS			NNIA-RS			ERKM		
		Min	Max	Mean	Min	Max	Mean	Min	Max	Mean
75	0.2	0.5	0.6	0.55	0	0.5	0.128	0.1	0.9	0.483
78	0.1	0.3	0.4	0.35	0	0.3	0.036	0	0.8	0.317
127	0.5	0.8	0.9	0.85	0.2	0.9	0.504	0.4	1	0.649
170	0.1	0.7	0.8	0.75	0	0.3	0.057	0.1	0.7	0.393
175	0	0.2	0.3	0.25	0	0.2	0.02	0	0.6	0.304
190	0.1	0.7	0.8	0.75	0	0.3	0.044	0	0.8	0.386
267	0	0.4	0.5	0.45	0	0.2	0.013	0	0.7	0.325
325	0	0.1	0.2	0.15	0	0.2	0.018	0	0.7	0.293
383	0	0.3	0.5	0.4	0	0.2	0.030	0.1	0.8	0.42
476	0.1	0.4	0.4	0.4	0	0.2	0.014	0	0.7	0.276

Bold values indicate that the corresponding evaluation index values are the best

Table 4 Precision on Anime dataset

User_id	MF	MORS			NNIA-RS			ERKM		
		Min	Max	Mean	Min	Max	Mean	Min	Max	Mean
3	0	0.3	0.4	0.35	0	0.1	0.003	0	0.6	0.251
16	0	0.3	0.3	0.3	0	0.1	0.005	0	0.6	0.245
18	0	0.2	0.3	0.25	0	0.1	0.005	0	0.6	0.263
19	0	0.1	0.2	0.15	0	0.1	0.002	0	0.4	0.181
20	0.1	0.5	0.6	0.55	0	0.2	0.019	0.2	0.8	0.417
22	0.1	0.1	0.2	0.15	0	0.3	0.031	0.1	0.7	0.348
25	0	0.2	0.3	0.25	0	0.2	0.010	0	0.5	0.171
28	0.2	0	0.1	0.05	0	0.4	0.114	0	0.7	0.329
42	0	0	0	0	0	0.2	0.17	0	0.6	0.239
58	0	0.1	0.2	0.15	0	0.3	0.021	0	0.7	0.325

'Min', 'max', and 'mean' respectively represent the minimum, maximum and average values about recommended lists obtained by MOEA on evaluation indicator

Bold values indicate that the corresponding evaluation index values are the best

Table 5 Explainability on MovieLens dataset

User_id	MF	MORS			NNIA-RS			ERKM		
		Min	Max	Mean	Min	Max	Mean	Min	Max	Mean
75	0.065	0.146	0.154	0.150	0.025	0.197	0.106	0.117	0.256	0.187
78	0.014	0.038	0.04	0.039	0.018	0.056	0.035	0.024	0.064	0.045
127	0.364	0.268	0.29	0.280	0.169	0.450	0.310	0.294	0.483	0.394
170	0.063	0.085	0.09	0.088	0.014	0.113	0.064	0.100	0.198	0.154
175	0.032	0.052	0.056	0.054	0.020	0.077	0.046	0.058	0.119	0.087
190	0.062	0.041	0.049	0.045	0.018	0.125	0.065	0.069	0.188	0.129
267	0.0162	0.032	0.038	0.035	0.081	0.037	0.020	0.035	0.067	0.051
325	0.0132	0.034	0.035	0.035	0.006	0.037	0.023	0.033	0.064	0.048
383	0.049	0.03	0.032	0.031	0.016	0.071	0.041	0.051	0.106	0.080
476	0.021	0.027	0.033	0.029	0.010	0.040	0.024	0.018	0.059	0.038

Bold values indicate that the corresponding evaluation index values are the best

selected users are not all the best, but the maximum and average values are better than those generated by comparison method.

Explainability on Anime dataset can be seen in Table 6. It is evident from Table 6 that the mean values about 10 users

are the best, which are not achieved by the three comparison models.

The diversity calculated using MovieLens dataset are revealed in Table 7. The mean values about diversity obtained by ERKM are superior to the mean values of

Table 6 Explainability on Anime dataset

User_id	MF	MORS			NNIA-RS			ERKM		
		Min	Max	Mean	Min	Max	Mean	Min	Max	Mean
3	0.036	0.040	0.043	0.041	0.008	0.068	0.035	0.041	0.120	0.088
16	0.114	0.124	0.188	0.156	0.029	0.245	0.129	0.198	0.489	0.359
18	0	0.049	0.068	0.058	0	0.132	0.050	0.052	0.268	0.168
19	0.042	0.107	0.113	0.11	0.003	0.131	0.057	0.135	0.275	0.206
20	0.074	0.091	0.099	0.095	0.015	0.102	0.058	0.098	0.199	0.144
22	0.224	0.270	0.293	0.282	0.060	0.395	0.211	0.278	0.611	0.468
25	0.078	0.087	0.102	0.095	0	0.120	0.036	0.160	0.313	0.240
28	0.169	0.191	0.199	0.195	0.087	0.295	0.182	0.190	0.395	0.298
42	0.305	0.466	0.474	0.470	0.177	0.492	0.323	0.428	0.861	0.620
58	0.030	0.131	0.167	0.149	0	0.263	0.057	0.088	0.723	0.417

Bold values indicate that the corresponding evaluation index values are the best

Table 7 Diversity on MovieLens dataset

User_id	MF	MORS			NNIA-RS			ERKM		
		Min	Max	Mean	Min	Max	Mean	Min	Max	Mean
75	0.933	0.983	1.141	1.062	0.595	0.992	0.851	0.952	1.353	1.136
78	0.977	0.969	1.001	0.985	0.652	0.990	0.893	0.978	1.560	1.205
127	1.042	0.921	0.958	0.939	0.848	1	0.953	0.944	1.181	1.073
170	0.964	0.988	1.023	1.006	0.587	0.992	0.892	0.976	1.407	1.196
175	0.980	0.992	1.048	1.020	0.706	0.984	0.874	0.896	1.635	1.190
190	0.985	0.972	0.993	0.983	0.611	0.985	0.859	1.000	1.459	1.210
267	1.274	0.948	0.965	0.957	0.737	0.998	0.892	0.878	1.660	1.255
325	0.933	1.038	1.046	1.042	0.781	0.994	0.914	0.949	1.568	1.198
383	1.063	0.963	1.078	1.020	0.669	0.992	0.896	0.967	1.476	1.212
476	1.056	0.966	1.004	0.985	0.698	0.992	0.905	1.026	1.509	1.191

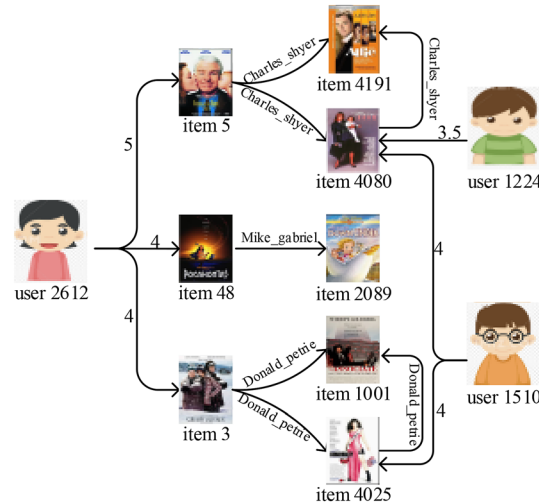
Bold values indicate that the corresponding evaluation index values are the best

Table 8 Diversity on Anime dataset

User_id	MF	MORS			NNIA-RS			ERKM		
		Min	Max	Mean	Min	Max	Mean	Min	Max	Mean
3	0.911	0.723	0.842	0.783	0.911	1.102	1.001	0.919	1.377	1.111
16	1.143	0.935	0.980	0.957	0.892	1.104	1.001	0.852	1.483	1.117
18	1.060	1.041	1.075	1.058	0.918	1.110	1.002	0.879	1.434	1.158
19	1	1.025	1.035	1.03	0.881	1.114	0.999	0.967	1.441	1.185
20	1.122	0.999	1.031	1.015	0.869	1.095	1.000	0.930	1.452	1.174
22	1.043	0.747	0.747	0.747	0.782	1.089	1.000	0.985	1.416	1.201
25	1	1.159	1.165	1.140	0.868	1.132	0.993	0.920	1.429	1.183
28	1.017	0.985	1.078	1.032	0.961	1.079	1.001	0.989	1.225	1.094
42	0.950	1.015	1.041	1.028	0.897	1.131	1.004	0.981	1.338	1.160
58	1.053	0.925	0.936	0.930	0.927	1.102	1.003	0.946	1.442	1.164

Bold values indicate that the corresponding evaluation index values are the best

Fig. 5 Explanation paths between user 2612 and several items in constructed knowledge graph



To illustrate the ability of the model to explain, case study is used for qualitative analysis.

comparison methods except user 267. Meanwhile, the maximum values of 10 users obtained by our model are the best than comparison methods.

The diversity calculated using Anime dataset are demonstrated in Table 8. Although minimum values about diversity obtained by our model are not always the best compared to comparison models, maximum values and average values of 10 users obtained by ERKM are better than values obtained by comparison methods except user 16.

In summary, a conclusion can be drawn that although average values of precision, minimum values of diversity and explainability obtained by our proposed model are not always better than comparison models, the overall recommendation performance is the best compared with comparison models.

Case study

To illustrate the ability of the model to explain, case study is used for qualitative analysis.

Users and items are linked by ratings, items and items are linked by the same director. In Fig. 5, user 2612 has the highest rating for item 5, items along the path of item 5 can better satisfy the user's preferences. Therefore, items along the path of item 5 will be preferentially selected to recommend to the user. Simultaneously, the corresponding path is used as explanation basis to explain to user 2612 why the item is recommended. The similarity of attributes between item 4191 \(\setminus\) item 4080 and item 5 is 0 and 50% respectively. It is obvious that on the basis of optimizing accuracy and diversity through multi-objective optimization, item 4080 is more likely to be recommended to users in some degree. The path {user 2612 \(\rightarrow\) item 5 \(\rightarrow\) item 4080} is used as a

recommendation reason to tell user 2612 why the item 4080 is recommended to him.

Conclusion

In order to boost explainability, precision and diversity about recommendations contemporary, an explainable recommendation framework on the basis of knowledge graph and MOEA is put forward in the work. This explainable recommendation framework is divided into the procedure of obtaining explainable candidate list and the procedure of optimization recommendation. Explainable recommendation list of target user is obtained by constructing a knowledge graph in the procedure of obtaining explainable candidate list, and the explainable recommendation list is optimized using MOEA in the procedure of optimization recommendation to obtain recommendation results that meet multiple objectives synchronously. The recommendation results obtained have good results on three different evaluation indicators. Through the comparison experiment with other three existing recommendation models, it can be seen that the explainable recommendation framework has an excellent effect on different datasets and has high explainability on the basis of maintaining accuracy and diversity.

The explainable recommendation framework proposed in this paper can obtain a set of high-quality recommendation lists, but there is an unbalance between three optimized objective functions. In the future, we will analyze the reasons for this problem to comprehensively improve the recommended performance.

Acknowledgements This work is supported by the National Key Research and Development Program of China under Grant No.

2018YFC1604000, the National Natural Science Foundation of China under Grant No. 61806138, No. U1636220, No. 61961160707 and No. 61976212, Key R&D program of Shanxi Province (International Cooperation) under Grant No. 201903D421048. Australian Research Council (ARC) projects DP190101893, DP170100136, and LP180100758.

Declarations

Conflict of interest There is no conflict of interest.

Open Access This article is licensed under a Creative Commons Attribution 4.0 International License, which permits use, sharing, adaptation, distribution and reproduction in any medium or format, as long as you give appropriate credit to the original author(s) and the source, provide a link to the Creative Commons licence, and indicate if changes were made. The images or other third party material in this article are included in the article's Creative Commons licence, unless indicated otherwise in a credit line to the material. If material is not included in the article's Creative Commons licence and your intended use is not permitted by statutory regulation or exceeds the permitted use, you will need to obtain permission directly from the copyright holder. To view a copy of this licence, visit <http://creativecommons.org/licenses/by/4.0/>.

References

- Ai Q, Azizi V, Chen X, Zhang Y (2018) Learning heterogeneous knowledge base embeddings for explainable recommendation. *Algorithms* 11(9):137
- Ai Q, Zhang Y, Bi K, Croft WB (2019) Explainable product search with a dynamic relation embedding model. *ACM Trans Inf Syst* 38(1):4:1-4:29
- Bauman K, Liu B, Tuzhilin A (2017) Aspect based recommendations: recommending items with the most valuable aspects based on user reviews. In: *Proceedings of the 23rd ACM SIGKDD international conference on knowledge discovery and data mining*, Halifax, August 13–17. pp 717–725
- Cai X, Geng S, Wu D, Cai J, Chen J (2020) A multi-cloud model based many-objective intelligent algorithm for efficient task scheduling in internet of things. *IEEE Internet Things J*. <https://doi.org/10.1109/JIOT.2020.3040019>
- Cai X, Hu Z, Chen J (2020) A many-objective optimization recommendation algorithm based on knowledge mining. *Inf Sci* 537:148–161
- Cai X, Hu Z, Zhao P, Zhang WS, Chen J (2020) A hybrid recommendation system with many-objective evolutionary algorithm. *Expert Syst Appl* 159:113648
- Catherine R, Mazaitis K, Eskenazi M, Cohen W (2017) Explainable entity-based recommendations with knowledge graphs. In: *Proceedings of the poster track of the 11th ACM conference on recommender systems (RecSys 2017)*, Como, August 28
- Chai Z, Li Y, Han Y, Zhu S (2019) Recommendation system based on singular value decomposition and multi-objective immune optimization. *IEEE Access* 7:6060–6071
- Chen T, Peng L, Yin X, Rong J, Yang J, Cong G (2020) Analysis of user satisfaction with online education platforms in China during the COVID-19 pandemic. *Healthcare* 8(3):200
- Chen T, Shi J, Yang J, Cong G (2020) Li G (2020) Modeling public opinion polarization in group behavior by integrating SIRS-based information diffusion process. *Complexity* 11:1–20
- Chen T, Wang Y, Yang J, Cong G (2020) Modeling public opinion reversal process with the considerations of external intervention information and individual internal characteristics. *Healthcare* 8(2):160
- Cheng H-T, Koc L, Harmsen J, Shaked T, Chandra T, Aradhya H, Anderson G, Corrado G, Chai W, Ispir M, Anil R, Haque Z, Hong L, Jain V, Liu X, Shah H (2016) Wide & deep learning for recommender systems. In: *Proceedings of the 1st workshop on deep learning for recommender systems*, Boston, September 15, pp 7–10
- Christo VRE, Nehemiah HK, Nahato KB, Brightly J, Kannan A (2020) Computer assisted medical decision-making system using genetic algorithm and extreme learning machine for diagnosing allergic rhinitis. *Int J Bio-Inspired Comput* 16(3):148–157
- Cui Z, Xu X, Xue F, Cai X, Cao Y, Zhang W, Chen J (2020) Personalized recommendation system based on collaborative filtering for IoT scenarios. *IEEE Trans Serv Comput* 13(4):685–695
- Cui Z, Xue F, Zhang S, Cai X, Cao Y, Zhang W, Chen J (2020) A hybrid blockchain-based identity authentication scheme for multi-WSN. *IEEE Trans Serv Comput* 13(2):241–251
- Cui Z, Zhang J, Wu D, Cai X, Wang H, Zhang W, Chen J (2020) Hybrid many-objective particle swarm optimization algorithm for green coal production problem. *Inf Sci* 518:256–271
- Deng W, Xu J, Song Y, Zhao H (2020) An effective improved co-evolution ant colony optimisation algorithm with multi-strategies and its application. *Int J Bio-Inspired Comput* 16(3):158–170
- Ding Z, Bin S, Sun G (2019) Recommendation with heterogeneous information networks based on meta-graph. In: *Artificial intelligence and security—5th international conference*, New York, July 26–28, pp 379–390
- Geng B, Li L, Jiao L (2015) NNIA-RS: a multi-objective optimization-based recommender system. *Phys A Stat Mech Appl* 424:383–397
- Guo Q, Zhuang F, Qin C, Zhu H, Xie X, Xiong H, He Q (2020) A survey on knowledge graph-based recommender systems. *CoRR* 50(7):937
- Hou Y, Yang N, Wu Y, Yu PS (2019) Explainable recommendation with fusion of aspect information. *World Wide Web Internet Web Inf Syst* 22(1):221–240
- Koren Y, Bell R, Volinsky C (2009) Matrix factorization techniques for recommender systems. *IEEE Comput* 42:30–37
- Ma W, Zhang M, Cao Y, Jin W, Wang C (2019) Jointly learning explainable rules for recommendation with knowledge graph. In: *The world wide web conference*, San Francisco, May 13–17. pp 1210–1221
- Mohamed MS, Duan H (2020) Flight control system design using adaptive pigeon-inspired optimisation. *Int J Bio-Inspired Comput* 16(3):133–147
- Natarajan S, Subramaniaswamy V, Ravi L, Vijayakumar V, Gao X-Z, Sri SLR (2020) An effective user clustering-based collaborative filtering recommender system with grey wolf optimisation. *Int J Bio-Inspired Comput* 16(1):44–55
- Oramas S, Ostuni VC, Noia TD, Serra X, Sciascio ED (2017) Sound and music recommendation with knowledge graphs. *ACM Trans Intell Syst Technol* 8(2):21:21
- Ribeiro MT, Lacerda A, Veloso A, Ziviani N (2012) Pareto-efficient hybridization for multi-objective recommender systems. In: *Sixth ACM conference on recommender systems*, Dublin, September 9–13, pp 19–26
- Wang H, Miao X, Pan Y (2018) Design and implementation of personal health record systems based on knowledge graph. In: *Paper presented at the 2018 9th international conference on information technology in medicine and education (ITME)*
- Wang H, Zhang F, Wang J, Zhao M, Li W, Xie X, Guo M (2018) RippleNet: propagating user preferences on the knowledge graph for recommender systems. In: *Proceedings of the 27th ACM*

- international conference on information and knowledge management, Torino, October 22–26, pp 417–426
30. Wang N, Wang H, Jia Y, Yin Y (2018) Explainable recommendation via multi-task learning in opinionated text data. In: The 41st international ACM SIGIR conference on research & development in information retrieval, Ann Arbor, July 08–12, pp 165–174
 31. Wang S, Gong M, Li H, Yang J (2016) Multi-objective optimization for long tail recommendation. *Knowl Based Syst* 104:145–155
 32. Wang S, Tian H, Zhu X, Wu Z (2018) Explainable matrix factorization with constraints on neighborhood in the latent space. In: Third international conference, DMBD Shanghai, June 17–22, pp 102–113
 33. Wu Y, Mu T, Goulermas JY (2017) Translating on pairwise entity space for knowledge graph embedding. *Neurocomputing* 260:411–419
 34. Xian Y, Fu Z, Muthukrishnan S, Melo G, Zhang Y (2019) Reinforcement knowledge graph reasoning for explainable recommendation. In: Proceedings of the 42nd international ACM SIGIR conference on research and development in information retrieval, Paris, July 21–25, pp 285–294
 35. Zhang X, Li X-t, Yin M (2020) An enhanced genetic algorithm for the distributed assembly permutation flowshop scheduling problem. *Inte J Bio-Inspired Comput* 15(2):113–124
 36. Zhang Y, Cai X, Zhu H, Xu Y (2020) Application an improved swarming optimisation in attribute reduction. *Int J Bio-Inspired Comput* 16(4):213
 37. Zhang Y, Chen X (2020) Explainable recommendation: a survey and new perspectives. *Found Trends Inf Retr* 14(1):1–100
 38. Zhang Y, Zhang M, Liu Y, Ma S (2013) Improve collaborative filtering through bordered block diagonal form matrices. In: Proceedings of the 36th international ACM SIGIR conference on Research and development in information retrieval, Dublin, July 28–August 01, pp 313–322
 39. Zhou K, Zhao WX, Bian S, Zhou Y, Wen J-R, Yu J (2020) Improving conversational recommender systems via knowledge graph based semantic fusion. In: The 26th ACM SIGKDD conference on knowledge discovery and data mining, Virtual Event, August 23–27, pp 1006–1014
 40. Zuo Y, Gong M, Zeng J, Ma L, Jiao L (2015) Personalized recommendation based on evolutionary multi-objective optimization. *IEEE Comput Intell Mag* 10(1):52–62

Publisher's Note Springer Nature remains neutral with regard to jurisdictional claims in published maps and institutional affiliations.