

Polluted Pathways: Mechanisms of Metabolic Disruption by Endocrine Disrupting Chemicals

Mizuho S. Mimoto¹ · Angel Nadal² · Robert M. Sargis³

Published online: 21 April 2017
© Springer International Publishing AG 2017

Abstract

Purpose of Review Environmental toxicants are increasingly implicated in the global decline in metabolic health. Focusing on diabetes, herein, the molecular and cellular mechanisms by which metabolism disrupting chemicals (MDCs) impair energy homeostasis are discussed.

Recent Findings Emerging data implicate MDC perturbations in a variety of pathways as contributors to metabolic disease pathogenesis, with effects in diverse tissues regulating fuel utilization. Potentiation of traditional metabolic risk factors, such as caloric excess, and emerging threats to metabolism, such as disruptions in circadian rhythms, are important areas of current and future MDC research. Increasing evidence also implicates deleterious effects of MDCs on metabolic programming that occur during vulnerable developmental windows, such as in utero and early post-natal life as well as pregnancy. **Summary** Recent insights into the mechanisms by which MDCs alter energy homeostasis will advance the field's ability to predict interactions with classical metabolic disease risk factors and empower studies utilizing targeted therapeutics to treat MDC-mediated diabetes.

Keywords EDCs · MDCs · Diabetes · Obesity · Metabolism · Endocrine disruptor · Glucose intolerance · Insulin resistance · Metabolic syndrome

Abbreviations

EDCs	Endocrine disrupting chemicals
GDM	Gestational diabetes mellitus
MDCs	Metabolism disrupting chemicals
T1DM	Type 1 diabetes mellitus
T2DM	Type 2 diabetes mellitus
GLUT2	glucose transporter 2
GI	Gastrointestinal
ATP	Adenosine triphosphate
ADP	Adenosine diphosphate
K _{ATP}	Potassium sensitive ATP channel
TPT	Triphenyltin
GLP-1	Glucagon-like peptide-1
GIP	Gastric inhibitory polypeptide/glucose-dependent insulinotropic polypeptide
cAMP	Cyclic AMP
NAD(P)H	Nicotinamide adenine dinucleotide phosphate
SNAP-25	Synaptosome-associated protein 25 kDa
GPCR	G-Protein-coupled receptor
TBT	Tributyltin
PKA	Protein kinase A
PCB	Polychlorinated biphenyl
CamKII	Calcium/calmodulin-dependent protein kinase II
cGMP	cyclic guanosine monophosphate
BPA	Bisphenol A
GSIS	Glucose-stimulated insulin secretion
PAH	Polycyclic aromatic hydrocarbon
ncmER	non-classical membrane estrogen receptor
ER β	Estrogen receptor beta
CREB	response element binding protein

This article is part of the Topical Collection on *Mechanisms of Toxicity*

✉ Robert M. Sargis
rsargis@uic.edu

¹ Section of Endocrinology, Diabetes, and Metabolism; Department of Medicine, University of Chicago, Chicago, IL, USA

² Institute of Bioengineering and Centro de Investigacion Biomedica en Red de Diabetes y Enfermedades Metabolicas Asociadas, CIBERDEM, Universidad Miguel Hernández de Elche, Alicante, Spain

³ Division of Endocrinology, Diabetes, and Metabolism; Department of Medicine, University of Illinois at Chicago, 835 S. Wolcott, Suite 625E M/C 640, Chicago, IL, USA

ER α	Estrogen receptor alpha
ERK	Extracellular signal-regulated kinase
ER	Endoplasmic reticulum
DEHP	Diethylhexylphthalate
ROS	Reactive oxygen species
DNA	Deoxyribonucleic acid
NAC	N-Acetylcysteine
JNK	c-Jun N-terminal kinase
NOD	Non-obese diabetic
IRS	Insulin receptor substrate
PI3-K	Phosphatidylinositol 3 kinase
PIP ₃	Phosphatidylinositol triphosphate
PDK1	Phosphoinositide-dependent kinase 1
PKB	Protein Kinase B
PM	Particulate matter
TCDD	2,3,7,8-Tetrachlorodibenzo dioxin
TF	Tolylfluanid
POP	Persistent organic pollutant
PFOA	Perfluorooctanoic acid
PEPCK	Phosphoenolpyruvate carboxykinase
AhR	Aryl hydrocarbon receptor
PFOS	Perfluorooctanesulfonic acid
HNF4 α	Hepatocyte nuclear factor 4 alpha
PPAR γ	Peroxisome proliferator activated receptor gamma
GR	glucocorticoid receptor
TNF α	Tumor necrosis factor alpha
AMPK	5' Adenosine monophosphate-activated protein kinase
IL-1 β	Interleukin 1 beta
NF κ B	Nuclear factor kappa-light-chain-enhancer of activated B cells
MAPK	Mitogen-activated protein kinase
IL-6	Interleukin 6
NEFA	Non-esterified fatty acids
Srebp1	Sterol regulatory element-binding protein 1
PPAR α	Peroxisome proliferator activated receptor alpha
Cpt1b	Carnitine palmitoyltransferase 1B
CDK4	Cyclin-dependent kinase-4
SGLT-2	Sodium-glucose cotransporter-2
DPP4	Dipeptidyl peptidase 4
GLP-1	Glucagon-like peptide-1

Introduction

Diabetes and obesity rates have risen exponentially over the last several decades, and the impact of this on individual morbidity and societal costs is significant. In addition to the burden of disease in adults, metabolic disease in children has risen dramatically [1] and the impact of diabetes across the lifespan has been further compounded by increased rates of gestational diabetes mellitus (GDM) in

pregnant women [2]. Indeed, GDM has tripled in the past 20 years, affecting 9% of pregnancies in the USA [2], which is critical because GDM is linked to adverse pregnancy outcomes for both mother and child [3]. While traditional metabolic risk factors such as reduced physical activity, increased caloric intake, aging, and sleep deficits are undoubted contributors to this phenomenon, they insufficiently account for this upsurge. Indeed, for a given level of activity and caloric intake, individuals in today's society weigh more than they did 20–30 years ago [4••]. Consequently, other factors are implicated in the global deterioration of metabolic health, including exposure to environmental factors that drive or facilitate metabolic dysfunction [5••]. Over the last decade, abundant epidemiologic evidence has emerged linking an increasing number of endocrine disrupting chemicals (EDCs) to the development of metabolic disease; however, our understanding of the mechanisms by which these exposures promote metabolic dysregulation remains relatively rudimentary. This report will integrate the current molecular and cellular evidence by which EDCs act as metabolism disrupting chemicals (MDCs) to dysregulate glucose homeostasis and increase diabetes risk (Table 1) in order to provide direction for future research aimed at mitigating the deleterious impact of environmental exposures on human metabolic health.

Afflicting 415 million individuals globally with 642 million projected to suffer from the disease by 2040 [72], diabetes is a common, heterogeneous disorder defined by hyperglycemia arising from inadequate insulin production, impaired insulin action, or a combination of the two. Traditionally, type 2 diabetes (T2DM), the most common form of the disease, is thought to originate from the development of insulin resistance, which increases synthetic demand for insulin that eventually becomes unsustainable as pancreatic β -cells begin to decompensate, ultimately leading to overt T2DM [73]. In contrast, type 1 diabetes (T1DM) classically arises from the primary destruction of β -cells. Thus, factors that potentiate insulin resistance or promote β -cell failure augment diabetes risk. Importantly, mounting evidence demonstrates that MDCs affect multiple levels of glucose regulation from β -cell insulin secretion to insulin signaling in metabolically active tissues such as the liver, muscle, adipose, brain, and gastrointestinal (GI) tract (Fig. 1).

MDC Disruption of β -Cell Function

Classically, increased extracellular glucose concentrations increase glucose uptake into β -cells via glucose transporter 2 (GLUT2), followed by entry into glycolysis, oxidative phosphorylation, and ATP generation. Increases in the ATP/ADP ratio promote ATP-sensitive K⁺-channel (K_{ATP}) closure, membrane depolarization, and calcium influx. Increased

Table 1 Summary of cellular and molecular effects of MDCs with common routes of exposure, nationally recommended safe exposure levels, and estimated elimination half-lives in humans

Compound	Uses and common routes of exposure	Recommended safe exposure level in humans	Cellular/molecular metabolic effects	Elimination half-life in humans	References
Organotins (TPT, TBT)	*Biocide in marine paints, fungicide, wood preservative, PVC stabilizer *Drinking water, seafood, PVC products	0.1 mg/m ³ (air; OSHA/NIOSH)	General mechanisms: Activates PPAR γ and RXR Whole animals: increased weight, increased/reduced insulin levels, leptin, hepatic steatosis β -cells: reduced GSIS, impaired Ca ²⁺ signaling, reduced NAD(P)H and ATP, and PKA levels	Serum half-life 3 days (POP)	[6–13]
Arsenic	*Pesticides, smelting, industrial waste *Drinking water, soil, seafood, rice, mushrooms, poultry	10 ppb (water; EPA)	Insulin target cells: increased adipogenesis General mechanisms: oxidative stress/unknown Whole animals: glucose intolerance Gestational exposure: glucose intolerance, obesity in dams β -cells: reduced GSIS, increased ROS, impaired Ca ²⁺ signaling, insulin granule exocytosis, insulin gene expression. Induced autophagy, apoptosis. Insulin target cells: reduced insulin signaling, ROS, reduced hepatic glycogen	4–6 h, 20–30 h (methylated)	[14–24]
Cadmium	*Byproduct of mining, combustion, waste incineration *Soil, water, air; leafy vegetables, peanuts, soybeans, sunflower seeds; inhalation	0.005 mg/L (water; EPA); 5 μ g/m ³ per day (air; OSHA)	General mechanisms: oxidative stress/unknown Whole animals: insulin resistance, increased insulin levels β -cells: reduced GSIS, increased ROS, mitochondrial dysfunction, apoptosis, mediated by JNK	4–38 years	[25–28]
Mercury	*Mining, waste incineration, manufacturing *Fish, shellfish, medical/dental procedures	2 ppb (water; EPA); 1 ppm (food; FDA); 0.1 mg/m ³ (air; OSHA)	Insulin target cells: reduced GLUT4 General mechanisms: oxidative stress/unknown β -cells: reduced GSIS, increased ROS, PI3 kinase and Akt, induced apoptosis and necrosis	1–3 weeks to 1–3 months (depends on route of exposure, chronicity)	[29, 30]
Alkylphenolic compounds (e.g., octylphenol, nonylphenol)	*Surfactants, detergents, emulsifiers *Fish, drinking water, personal care products	Undetermined	General mechanisms: modulates estrogen signaling β -cells: reduced GSIS, impaired mitochondrial structure and function. Insulin target cells: impaired FA metabolism, reduced lipogenesis	2–3 h (POP)	[31, 32]
BPA	*Food packaging, toys, canned food liners *Ubiquitous exposure	50 mcg/kg/day (FDA); 4 mcg/kg/day (European Food Safety Authority)	General mechanisms: modulates estrogen signaling Whole animals: glucose intolerance Gestational exposure: glucose intolerance, increased weight in both dams and offspring.	4–5 h	[31, 33, 34, 35–40, 41, 42, 43, 44]

Table 1 (continued)

Compound	Uses and common routes of exposure	Recommended safe exposure level in humans	Cellular/molecular metabolic effects	Elimination half-life in humans	References
Phthalates/phthalate esters (e.g., DEHP, MEHP)	*Liquid plasticizers: lend flexibility to plastics (e.g., PVC); lubricants, perfumes, cosmetics, medical tubing, wood finishes, adhesives, paints, toys, emulsifiers in food. *Ubiquitous exposure	DEHP: 6 ppb (water; EPA); 5 mg/m ³ /8 h day (air; OSHA)	β-cells: reduced GSIS, disrupted mitochondrial structure and function, increased ROS Insulin target cells: reduced insulin action and signaling intermediates, increased adipose inflammation (JNK, NFκB) General mechanisms: activates PPARγ signaling Whole animals: insulin resistance, reduced hepatic glycogen, increased ROS. Gestational exposure: increased systemic inflammation and altered adipose development in offspring β-cells: reduced GSIS, insulin content, increased ROS Insulin target cells: reduced insulin signaling, glucose oxidation, increased ROS in muscle General mechanisms: unknown/ varied Whole animals: glucose intolerance β-cells: increased insulin secretion and Ca ²⁺ signaling General mechanisms: activates AhR signaling, induces inflammation Whole animals: glucose intolerance β-cells: reduced GSIS, insulin content; increased basal insulin secretion, [Ca ²⁺] _i c Insulin target cells: reduced insulin signaling, increased inflammation (JNK, ERK1/2), reduced hepatic glycogen	12 h	[45–49]
PCBs (mix of >200 congeners)	*Plasticizers, in resins, carbonless copy paper, adhesives, paints, inks (banned 1979) *High-fat food (dairy, meat, fish)	0.0005 ppm (water; EPA); 0.2–3.0 ppm (food; FDA); 0.5–1.0 mg/m ³ (air; OSHA); 6.0 μg/kg/day (food; WHO)	0.01–1 ng/L/day; 30 pg/kg/d (water; EPA)		
Dioxins (e.g., TCDD, PCB 126)	*Byproducts of smelting, paper manufacture, herbicides and pesticides, hospital waste. *Soil, dairy, meat, seafood				
Perfluoroalkyl substances (e.g., PFOA, PFOS)	*Stain-resistant coating in clothing, cookware, upholstery; food packaging *Food, drinking water	70 ppt (water; EPA)	General mechanisms: modulates estrogen signaling, activates PPARα signaling Whole animals: altered lipid metabolism, steatosis Gestational exposure: increased weight, leptin, insulin levels, glucose intolerance Insulin target cells: increased insulin signaling/sensitivity, reduced hepatic glycogen synthesis	3–5 years	[60–63]
Tolyfluanid	*Agricultural fungicide, biocide on ships, paints *Food, water; occupational exposures in shipping and agriculture	0.1 mg/kg/day (FDA)	General mechanisms: activates GR signaling Whole animals: increased weight, adiposity, insulin resistance, glucose intolerance, altered circadian feeding patterns. Insulin target cells: reduced insulin signaling	hours–days	[64, 65, 66•]
Atrazine		3 μg/L (water; EPA), 5 mg/m ³ /10 h day (OSHA)	General mechanisms: unknown	10–11 h	[67, 68]

Table 1 (continued)

Compound	Uses and common routes of exposure	Recommended safe exposure level in humans	Cellular/molecular metabolic effects	Elimination half-life in humans	References
	*Most widely used herbicide in the USA; used on corn, sorghum, sugar cane, Christmas trees, golf courses *Food, drinking water		Whole animals: increased weight, insulin resistance Insulin target cells: reduced insulin signaling, mitochondrial toxicity, impaired fatty acid oxidation in the liver		[69, 70, 71]
Particulate matter	*Aerosol particles with diameter less than 2.5 μm ; combustion associated with traffic, mining, burning coal, oil, wood *Ubiquitous; inhalation	35 $\mu\text{g}/\text{m}^3$ air daily average; 15 $\mu\text{g}/\text{m}^3$ annual average (EPA)	General mechanisms: inflammation/unknown Whole animals: increased visceral adiposity, insulin resistance Insulin target cells: reduced insulin signaling, PKC activity, increased inflammation, ROS, NASH, reduced glycogen	Unknown	

intracellular calcium induces cytoskeletal rearrangements that result in transport and release of insulin-containing vesicles [74]. Defects in insulin secretion are central to diabetes pathogenesis [75]. Insulin secretion is also regulated by incretin hormones, such as glucagon-like peptide-1 (GLP-1) and gastric inhibitory polypeptide (GIP), as well as estrogens, which modulate intracellular calcium flux and potentiate insulin secretion via a cAMP-mediated pathway (reviewed in [76]). Post-prandial incretin release from the GI tract augments insulin response, an effect that is attenuated in diabetes [76]. Importantly, multiple EDCs have been shown to disrupt β -cell function at various points in these pathways.

Triphenyltin (TPT) is a persistent organotin compound historically used as an antifouling agent. Islets from TPT-exposed hamsters exhibited impaired intracellular calcium flux and insulin secretion in response to known β -cell stimuli, including acetylcholine, GIP, and glucose [6], and TPT exposure of primary islets in culture reduced NAD(P)H and ATP production [7]. These findings are consistent with TPT interference in β -cell function upstream of K_{ATP} channel closure, possibly via impaired mitochondrial ATP production [7]. Additionally, TPT reduced GIP and GLP-1 induced insulin release in a protein kinase A (PKA)-dependent manner [8], a pathway central to β -cell function.

A number of studies demonstrated that arsenic also impairs insulin secretion [14–17]. Arsenic is a ubiquitous environmental pollutant that contaminates drinking water above the current WHO safety standard of 10 $\mu\text{g}/\text{L}$ for over 150 million individuals globally [77]. In a rat β -cell line, while high levels of arsenic reduced insulin gene expression [17], low micromolar concentrations impaired calpain-10-mediated proteolysis and activation of SNAP-25, a key step in insulin granule exocytosis [16]. The insulin exocytic machinery is similarly disrupted by phenolic compounds, widely used in adhesives and detergents. Exposure to low levels of phenolic estrogens reduced mRNA expression of Snap25 and Rab27a in rodent islets [31]. In contrast, polychlorinated biphenyl (PCB) treatment *increased* calcium influx and insulin secretion in a calcium/calmodulin-dependent protein kinase II (CaMKII)-dependent fashion [50]. Thus, MDCs can affect β -cell function both directly through altering calcium flux and via modulation of downstream signaling.

Sex steroids play an important role in glucose homeostasis, regulating β -cell insulin secretion in both cGMP-dependent and independent ways [78, 79]. Physiologic fluctuations in estrogen balance are associated with increased vulnerability to metabolic stress [80]. Importantly, multiple EDCs have been shown to alter estrogen signaling, including PCBs, bisphenol A (BPA), phthalates, phytoestrogens, and polycyclic aromatic hydrocarbons (PAHs) [5], making this pathway a likely target of metabolic disruption by exogenous chemicals (discussed in [81, 82]).

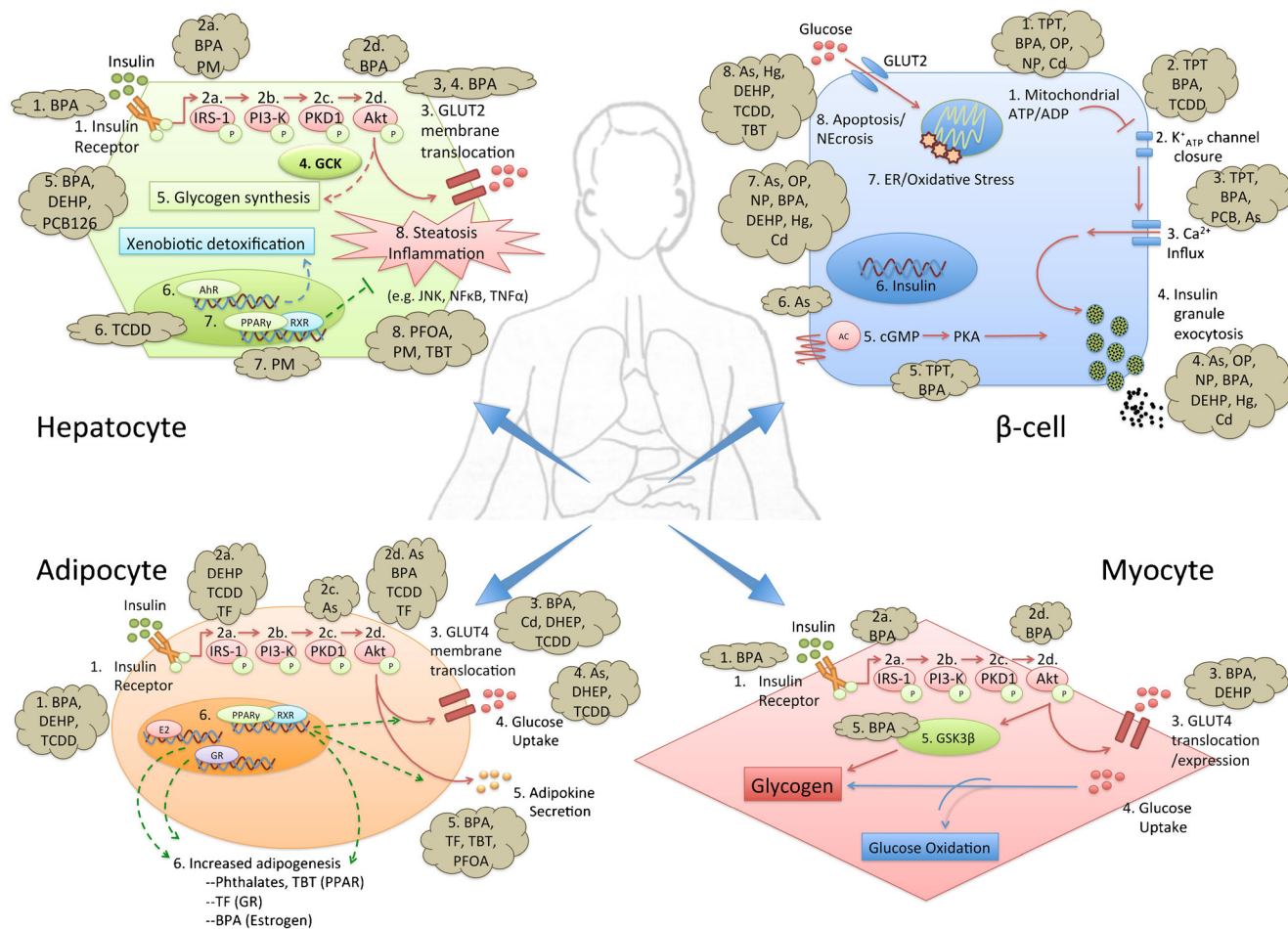


Fig. 1 Overview of the molecular mechanisms by which MDCs disrupt energy homeostasis in the β -cell, myocyte, hepatocyte, and adipocyte

Endoplasmic Reticulum and Oxidative Stress in MDC Action

Under conditions of hyperglycemia, insulin biosynthesis accelerates and can account for half of all β -cell protein synthesis [83]. This high synthetic demand coupled with their relatively small size renders β -cells uniquely vulnerable to both endoplasmic reticulum (ER) and oxidative stress and thus to chemicals that induce these reactions. Indeed, recent studies have implicated oxidative and ER stress as significant contributors to diabetes pathogenesis (reviewed in [84, 85]). Mitochondria are critical regulators of the cellular redox balance, responsible for both ROS and antioxidant production; thus, perturbations to mitochondrial integrity lead to increased cellular stress. Several MDCs promote oxidative stress in β -cells, including BPA [31, 33], arsenic [18, 19], and diethylhexylphthalate (DEHP) [45]. For example, rat islets exposed to the phenolic compounds octylphenol, nonylphenol, and BPA exhibited disruptions in islet mitochondrial architecture with alterations in mitochondrial gene expression [31]. Micromolar concentrations of BPA also

induced reactive oxygen species (ROS) in INS-1 cells, causing glutathione depletion, DNA damage, and p53 induction, which was partially rescued by pretreatment with the antioxidant N-acetylcysteine (NAC) [33]. In INS-1 cells treatment with 0.25–1 μ M sodium arsenite for 96 h reduced thioredoxin reductase activity, increased pro-apoptotic gene expression, and reduced viability, possibly via a c-Jun-N-terminal kinase (JNK)-mediated pathway [19]. Importantly, arsenic toxicity was also attenuated by pretreatment with NAC [18], suggesting oxidative stress as a mechanism of toxicity and supporting trials of NAC as a potential treatment for arsenic-induced diabetes. Exposure to other heavy metals such as cadmium [25, 26] and mercury [29, 30] also impairs insulin secretion and induces β -cell toxicity, although the epidemiologic evidence on a role for those metals in diabetes is inconsistent [86]. These effects have been presumed to occur via oxidative stress; however, the precise mechanisms by which these toxicants induce β -cell dysfunction require further study.

The role of ROS in β -cell function is complex as ROS also regulate insulin release [87]. Although arsenic has a well-documented ability to induce oxidative damage in multiple

contexts, arsenic exposure has also been shown to *reduce* glucose-stimulated ROS generation [15]. This decrease in ROS coincides with a robust induction of an endogenous Nrf2-mediated antioxidant pathway, raising the hypothesis that chronic exposure to low levels of arsenic leads to an adaptive antioxidant response that indirectly dampens glucose-stimulated insulin secretion (GSIS) [15]. Taken together, these data indicate that MDCs may perturb insulin secretion through bidirectional alterations in β -cell ROS handling.

Increased cellular stress and resultant inflammation in β -cells have been implicated in the pathogenesis of T1DM as well [75] and are hallmarks of EDC toxicity. Chronic exposure to BPA accelerated spontaneous insulinitis in non-obese diabetic (NOD) mice, a model of immune-mediated diabetes [88]. In addition, NOD mice exposed to BPA in utero exhibited more severe insulinitis at 11 weeks of age and increased diabetes prevalence at 20 weeks [34•], suggesting that BPA may also play a role in accelerating the decline of β -cell reserve by promoting immune disruption of pancreatic islets, implicating MDCs as possible contributors to increasing T1DM prevalence.

MDC Disruption of Insulin Action

Insulin functions primarily in myocytes and adipocytes to promote glucose uptake and in hepatocytes to promote glucose storage as glycogen. On a molecular level, insulin binds to its receptor triggering autophosphorylation and recruitment of the insulin receptor substrate (IRS) scaffolding proteins. This is followed by a series of iterative phosphorylation events that recruit and activate phosphatidylinositol-3-kinase (PI3-K), generate phosphatidylinositol triphosphate (PIP₃), and activate phosphoinositide-dependent kinase 1 (PDK1), ultimately resulting in phosphorylation and activation of Akt/protein kinase B. Akt mediates many of the metabolic actions of insulin, including glucose uptake by promoting GLUT4 translocation to the plasma membrane, lipid biogenesis, hepatic glycogen synthesis, and suppression of gluconeogenesis [89]. Impairments in insulin action promote diabetes pathogenesis when insulin resistance outstrips the β -cell's capacity for insulin secretion [73]. Global insulin resistance associated with MDC exposure is supported by epidemiologic, animal, and molecular studies [5]. Human exposures to a wide variety of chemicals have been associated with insulin resistance, including BPA [90, 91], particulate matter (PM) [92], 2,3,7,8-tetrachlorodibenzo dioxin (TCDD) [93], and phthalates [94, 95]. The precise mechanisms by which these chemicals promote insulin resistance are discussed below.

Multiple MDCs can disrupt insulin action in target tissues by altering the expression or activity of insulin signaling intermediates including the insulin receptor [35], IRS-1 [64],

PDK-1 [20], and Akt [20, 21, 35–37, 64]. For example, rodents exposed to BPA exhibit global insulin resistance associated with defects in phosphorylation of both the insulin receptor [35] and Akt [35, 37]. The phenylsulfamide fungicide tolylfluanid (TF) impaired insulin-stimulated Akt phosphorylation in primary rodent and human adipocytes, likely via downregulation of IRS-1 expression and protein destabilization [64]. Similarly, insulin-stimulated Akt phosphorylation was attenuated and glucose uptake reduced following arsenite exposure in 3T3-L1 adipocytes [21]. Independent studies in this model showed that 4-h exposure to either 50 μ M arsenite or 2 μ M methylarsonous acid also reduces Akt phosphorylation, inhibits PDK-1 activity, and prevents membrane GLUT4 translocation [20], the primary glucose transporter in adipocytes and myocytes. Dysregulation of GLUT proteins has been observed following exposure to multiple MDCs, including TCDD [53, 54], DEHP [46, 47, 96], cadmium [27], and arsenic [21]. For example, mice injected with a single high dose of TCDD exhibited reduced GLUT4 and GLUT1 expression in adipose and neuronal tissue, respectively [54]. Similarly, DEHP exposure in L6 myotubes downregulated GLUT4 with concomitant impaired glucose utilization [46]. Importantly, while skeletal muscle is responsible for the majority of glucose disposal following nutrient intake [97], few studies have directly addressed MDC effects on muscle; further work on MDC-mediated alterations in skeletal muscle metabolism may illuminate the potential for exercise to antagonize MDC-associated diabetes risk.

In addition to skeletal muscle disruptions, understanding MDC effects on hepatic function is critical for predicting metabolic risk, a fact underscored by the liver's dual role in energy and xenobiotic metabolism as well as the recent rise in non-alcoholic fatty liver disease (NAFLD) [98••]. Multiple MDCs can disrupt hepatic function, leading to toxicity, altered gluconeogenesis, and impaired glycogen storage, including persistent organic pollutants (POPs) [99], BPA [100, 101], PCBs [55], perfluorooctanoic acid (PFOA) [60], atrazine [67], arsenic [22], and DEHP [48]. For example, rats exposed to lipophilic POPs contained in dietary fish oil exhibited insulin resistance, abdominal obesity, and hepatosteatosis [99]. Exposure of rodents to BPA led to impaired glucose oxidation and significantly reduced glycogen stores in primary hepatocytes [101]. Similarly, PCB 126 inhibited hepatic glycogen metabolism, cAMP-mediated gluconeogenesis, and expression of a key enzyme in this pathway, phosphoenolpyruvate carboxykinase (PEPCK), in an aryl hydrocarbon receptor (AhR)-dependent fashion [55]. AhR is an orphan receptor that regulates hepatic detoxification of xenobiotic substances via controlling the activity of cytochrome P450 enzymes [102]. It has several known exogenous ligands including PAH, dioxin-like compounds (e.g., TCDD), and polyphenols [102]; thus, it is a likely mediator of MDC toxicity. Interestingly, RNA-Seq analysis of human hepatocytes exposed to PFOA and

perfluorooctanesulfonic acid (PFOS) demonstrates altered expression of lipid metabolism genes, possibly by direct interference with and downregulation of hepatocyte nuclear factor 4 α (HNF4 α), a master regulator of hepatocyte development and metabolism [60]. Mutations in HNF4 α also cause a form of familial diabetes, maturity onset diabetes of the young type 1 (MODY1), which is uniquely responsive to the insulin augmenting class of sulfonylurea drugs. Thus, MDC disruption of HNF4 α may have effects on both β -cell and hepatocyte physiology. Integrating understanding of the genetic and environmental causes of metabolic disease may thus inform future therapy decisions. Collectively, these data demonstrate that disruption in hepatic energy metabolism is emerging as an important consequence of MDC exposure [98••].

Context-Dependent MDC Action

The impact of MDCs may be context-dependent. For example, TCDD [56–59], organotins [9, 10], and BPA [35, 36, 38, 39, 101] differentially affect insulin levels and action depending on the experimental model. Acute TCDD exposure induces a wasting syndrome characterized by weight loss, adipose derangements, hyperlipidemia, ectopic lipid deposition, and hypoinsulinemia [103]. Conversely, multiple epidemiologic studies link TCDD to diabetes and hyperinsulinemia [104, 105]. In β -cell models, TCDD effects are similarly conflicting. TCDD impaired GSIS in primary rodent islets [56] and INS-1 cells [57] and caused AhR-dependent reductions in second-phase insulin secretion in intact animals [59]; however, other studies using INS-1 cells exhibited persistently *increased* intracellular calcium levels and basal insulin secretion, an effect antagonized by calcium channel blockade [58]. Similarly, hamsters exposed to the organotin tributyltin (TBT) for 45 days exhibited hyperinsulinemia and insulin resistance [10]; however, continuing exposure to 60 days promoted β -cell apoptosis with concomitant reduction in insulin levels [9]. These findings suggest a model whereby acute MDC exposure may augment insulin secretion at the expense of subsequent β -cell exhaustion and diminished metabolic reserve later in life; however, this hypothesis requires further interrogation.

Adipose Disruption and Global Metabolic Dysfunction

Adipose tissue is an important regulator of metabolic health, as increased adiposity is a well-recognized risk factor for insulin resistance and diabetes, and impairments in adipose development and function are also associated with metabolic disease [106]. Adipose tissue performs several important

functions for metabolic homeostasis, including controlling the storage and redistribution of lipids as well as secreting adipokines (e.g., leptin and adiponectin) that regulate food intake, insulin sensitivity, and β -cell health. Due to the lipophilic nature of many MDCs, adipose tissue is a toxicant depot and may determine their chemical persistence *in vivo*. MDCs that affect adipose function, termed obesogens, have been tied to alterations in adipocyte differentiation, insulin action, and nutrient handling (reviewed in [107]). The transcription factor peroxisome proliferator-activated receptor- γ (PPAR γ) is a key regulator of normal adipocyte development (reviewed in [106]). PPAR γ null mice lack adipose tissue, and PPAR γ ablation leads to adipocyte death within days. PPAR γ also influences glucose homeostasis by controlling expression of GLUT4, adiponectin, leptin, TNF α , and resistin [106]. Humans with heterozygous loss of function PPAR γ mutations have lipodystrophy and insulin resistance [108]. Thus, disruption of PPAR γ activity has multiple negative consequences on adipocyte development and function. Several MDCs disrupt PPAR γ signaling, including organotins and phthalates [109]. Importantly, the classical obesogen TBT has been shown to promote adipogenesis in multiple model systems via PPAR γ activation [110], while generating a dysfunctional adipocyte with reduced expression of the beneficial adipokine adiponectin [11]. In addition to MDCs that modulate PPAR γ activity, several MDCs alter adipogenesis through other key regulatory pathways such as the glucocorticoid receptor (GR) and sex steroid nuclear receptor pathways. For example, TF promotes adipogenesis in 3T3-L1 cells [65], likely by activating GR signaling, as treatment of primary mouse adipocytes with TF led to GR activation, nuclear translocation, and enrichment at GR response elements in target genes [111]. Moreover, rodents exposed to TF developed increased visceral adiposity, impaired glucose tolerance, and reduced adiponectin levels [66•], mimicking the pathologic features of glucocorticoid excess in humans [112]. Disruptions in the balance of estrogens and androgens also impair adipocyte differentiation. Human adipocyte stem cells exposed to BPA demonstrated increased adipogenesis in an ER-dependent fashion [40]. Interestingly, prolonged exposure of 3T3-L1 preadipocytes to BPA led to development of a compromised adipocyte with increased lipid accumulation, impaired glucose utilization, and increased expression of inflammatory cytokines [41•]. Importantly, while many studies have emphasized the adipogenesis-promoting capacity of MDCs, more attention is required to understand the potential dysfunctional state of MDC-generated adipocytes. Moreover, MDCs that inhibit adipogenesis are likely to promote metabolic dysfunction since impaired adipose expansion shifts lipid storage to the muscle and liver, resulting in metabolic dysregulation in these vital tissues, as seen in lipodystrophies [106].

Inflammation in MDC Action

In the obese state, adipocytes enlarge owing to increased triglyceride accumulation; this is accompanied by an increase in inflammatory markers and macrophage infiltration and release of cytokines such as TNF α and IL-1 β that further recruit immune cells and propagate the inflammatory cascade. Multiple molecular signaling pathways have been implicated in the pathogenesis of obesity-induced inflammation, including nuclear factor kappa-light-chain-enhancer of activated B cells (NF κ B), mitogen-activated protein kinase (MAPK), and JNK; conversely, targeted loss-of-function mutations in key pathway members is protective [106]. Increased inflammation shifts adipocytes away from lipogenesis and toward lipolysis, increasing circulating free fatty acids and promoting deleterious ectopic lipid deposition in the muscle, the liver, and β -cells [113]. Furthermore, inflammatory cytokines directly impair insulin action by exerting inhibitory effects on IRS proteins [114] and downregulating insulin receptor, IRS-1, and GLUT4 expression [115]. Many MDCs induce inflammation. For example, BPA treatment of 3T3-L1 cells increased IL-6 and IFN γ release in association with reduced glucose uptake [36]. Exposure of mice to particulate matter (PM) increased systemic inflammation with concomitant insulin resistance, impaired hepatic glycogen storage, and increased visceral adiposity [69, 70]. Thus, inflammation may mechanistically link poor air quality with diabetes and obesity [116]. TCDD also increased TNF α expression with an associated downregulation of insulin signaling intermediates, an effect partially rescued by disruption of key inflammatory mediators, including AhR, ERK, and JNK [53], highlighting their role in the negative metabolic effects of TCDD. Interestingly, microarray analysis of human adipose-derived stem cells treated with TCDD or PCB 126 identified genes regulating inflammation as the principal molecular alterations induced by these chemicals [117]. Collectively, these studies demonstrate that inflammation is a likely inducer of MDC-associated metabolic disease, and therapies directed at inflammatory responses should be investigated as potential interventions.

Developmental Origins of Metabolic Disease

Increasing evidence suggests that environmental exposures during key developmental windows program metabolic disease risk later in life; this includes the in utero and early post-natal period. For example, six-month-old male offspring of dams exposed to BPA exhibited impairments in glucose tolerance, insulin sensitivity, and insulin secretion [42]. Earlier interrogation showed that these mice exhibited increased β -cell mass and hyperinsulinemia that preceded a subsequent decline in both parameters. This suggests that in utero BPA exposure may promote insulin-induced insulin resistance that

is detrimental to long-term β -cell function [43]. Additionally, the consequences of BPA exposure may synergize with traditional metabolic risk factors such as a high-fat diet [100]. The metabolic disruptions in these offspring were associated with altered expression of genes regulating fatty acid metabolism, including the sterol regulatory element-binding protein 1, PPAR α , and carnitine palmitoyltransferase [100], suggesting potential molecular disruptions in lipid handling. In utero exposures to several EDCs disrupt glucose homeostasis, including TCDD [12], arsenic [23], DEHP [49, 96], PFOA [61], and PFOS [62]; however, the precise molecular defects remain largely undefined. In one study, however, in utero DEHP exposure induced inhibitory chromatin modifications at the GLUT4 promoter associated with reduced GLUT4 expression [96], suggesting that site-specific epigenetic alterations may mechanistically define links between early life stressors and later life metabolic disease; however, significant additional work is required to define the relevant mechanisms in this area.

In addition to being a sensitive period of development for the fetus, pregnancy is also a window of susceptibility for mothers. For example, pregnant mice exposed to BPA exhibit hyperinsulinemia [42] similar to women with GDM before the onset of overt diabetes [3]. Pregnant dams exposed to BPA exhibited increased weight, impaired glucose tolerance, and insulin resistance [44], effects likely arising from defects in adipocyte and β -cell function as these mice exhibited increased periuterine fat mass as well as reduced β -cell mass resulting from both decreased proliferation and increased apoptosis [44]. Importantly, β -cells from BPA-exposed dams exhibited persistent reductions in the expression of proliferative genes [cyclin D2 and cyclin-dependent kinase-4 (CDK4)] and increased expression of cell cycle inhibitors [p16 and p53] months after delivery [44]. Collectively, these data suggest that MDC exposures during pregnancy may increase the risk of GDM while also predisposing to later life metabolic insults that augment diabetes risk (reviewed in [118]). To understand the impact of MDCs on metabolic risk in mothers and their offspring, further work into the underlying mechanisms responsible for these alterations are required, including efforts to precisely define causal epigenetic changes (e.g., DNA methylation and histone modifications) linked to energy physiology.

MDCs and Classical Metabolic Risk

Central to understanding how MDCs threaten metabolic health is a need to appreciate how this emerging metabolic risk intersects with traditional diabetes and obesity risk factors (e.g., caloric excess, physical inactivity, sleep disruption, and aging). Current evidence indicates that MDCs potentiate these risks. For example, in C57BL/6 mice, high-fat diet-induced glucose intolerance and insulin resistance were exacerbated by BPA

exposure [37]. Similarly, perinatal BPA exposure impaired glucose tolerance and promoted hyperinsulinemia, effects amplified with high-fat feeding [119]. Particulate matter [71] and the herbicide atrazine [68] also promoted insulin resistance in rodents on a high fat but not a standard chow diet. However, this potentiation of metabolic risk is not uniform. Offspring of CD-1 mice exposed to BPA did not exhibit glucose intolerance or increased adiposity when fed either normal chow or a high-fat diet [120]. Furthermore, while high-fat feeding worsened glucose tolerance in arsenic-exposed C57BL/6 mice, these animals also exhibited reduced fat mass, *improved* fasting blood glucose, and may have had enhanced insulin sensitivity [121]. Thus, there are likely toxicant- and strain-specific differences that impact metabolic outcomes. Importantly, exploring these differences as well as interactions with specific dietary components may illuminate the underlying biological mechanisms by which MDCs promote disease risk.

Recently, disruptions in circadian rhythms have emerged as novel metabolic risk factors. In humans and mouse models, impaired sleep and disruptions in normal circadian patterns of food intake impair metabolic health [122], and MDCs are emerging as novel contributors to disease risk in this area. For example, TF was shown to deleteriously alter normal circadian feeding patterns in mice [66•]. Additionally, population studies have associated higher urinary BPA levels with shorter sleep duration [123]; a finding supported by studies in male zebrafish demonstrating BPA-induced alterations in circadian activity [124]. Exposure to estradiol, tamoxifen, BPA, and 4-tert-octylphenol in mangrove killifish also altered expression of circadian clock genes [125•]. A mechanistic basis for these associations is supported by genetic analysis of these circadian genes demonstrating conserved promoter binding sites for estrogen, the AhR, and the xenobiotic response element [125•], factors implicated in various MDC responses.

Conclusions: from Mechanisms to Interventions

As our mechanistic understanding of MDC action improves, a central challenge moving forward is translating this knowledge into interventions to improve human health. Clearly, preventing exposures and rapid remediation of environmental contaminants is critical to address MDC-induced metabolic dysfunction. Indeed, there may be promise in this area as one study demonstrated that arsenic's β -cell toxicity in cultured islets could be reversed by incubation in arsenic-free media, providing evidence for islet recovery [14]. Where exposure reduction is not possible or the effects of exposures are irreversible, employing mechanism-based therapeutics will be essential for improving human metabolic health. For those MDCs that interfere with β -cell insulin production, studies from neonatal diabetes may illuminate therapeutic approaches. The most common form of neonatal diabetes results

from a heterozygous activating mutation in *KCNJ11* that prevents closure of the K_{ATP} channel [126]. In these patients, sulfonylureas are highly effective. Several MDCs affect β -cell K_{ATP} channel function, suggesting that sulfonylureas may be beneficial in these contexts as suggested by one study of TPT's metabolic effects [7]. Conversely, several MDCs promote insulin resistance, which impairs insulin action in peripheral tissues and stresses β -cells by increasing synthetic demand for insulin. While insulin is a mainstay of diabetes treatment, newer therapies that reduce the glycemic burden, such as the sodium-glucose cotransporter-2 (SGLT-2) inhibitors, or that promote a more physiologic insulin release from the pancreas, such as dipeptidyl peptidase-4 (DPP4) inhibitors and glucagon-like peptide-1 (GLP-1) receptor agonists, may be beneficial in treating MDC-mediated diabetes. Because of the central role of adipose tissue in regulating global energy metabolism and evidence that many MDCs target adipocyte function, another class of anti-diabetic therapies of interest is the thiazolidinediones (TZDs), which target PPAR γ and inhibit hepatic gluconeogenesis, improve adipose function, reduce inflammation, and increase insulin sensitivity [127–130]. Where oxidative stress is implicated in MDC action, investigations into the utility of antioxidants are warranted. This approach is supported by studies showing that pretreatment with NAC mitigates some of the β -cell toxicity induced by arsenic [18, 131] and BPA [33]. As our appreciation of MDCs as metabolic risk factors increases, future work mandates investigations into the specific disease-promoting mechanisms by which these toxicants work in order to devise targeted interventions to stem the global tide of metabolic deterioration.

Acknowledgments This work was supported by the National Institutes of Health (T32DK007011 to M.S.M.), the American Diabetes Association (Junior Faculty Development Award 1-17-JDF-033 to R.M.S.), the Ministerio de Economía y Competitividad (SAF2014-58335-P to A.N.), and Generalitat Valenciana (PROMETEOII/2015/016 to A.N.). CIBERDEM is an initiative of the Instituto de Salud Carlos III.

Compliance with Ethical Standards

Conflict of Interest Mizuho S. Mimoto and Angel Nadal declare that they have no conflict of interest.

Robert M. Sargis reports honoraria from CVS Health.

Human and Animal Rights and Informed Consent This article does not contain any studies with human or animal subjects performed by any of the authors.

References

Papers of Particular Interest, Published Recently, Have Been Highlighted as:

- Of Importance
- Of Outstanding Importance

1. Dabelea D, Mayer-Davis EJ, Saydah S, Imperatore G, Linder B, Divers J, et al. Prevalence of type 1 and type 2 diabetes among children and adolescents from 2001 to 2009. *JAMA*. 2014;311(17):1778–86.
2. DeSisto CL, Kim SY, Sharma AJ. Prevalence estimates of gestational diabetes mellitus in the United States, pregnancy risk assessment monitoring system (PRAMS), 2007–2010. *Prev Chronic Dis*. 2014;11:E104.
3. Damm P, Houshmand-Oeregaard A, Kelstrup L, Lauenborg J, Mathiesen ER, Clausen TD. Gestational diabetes mellitus and long-term consequences for mother and offspring: a view from Denmark. *Diabetologia*. 2016;59(7):1396–9.
- 4.•• Brown RE, Sharma AM, Ardem CI, Mirdamadi P, Mirdamadi P, Kuk JL. Secular differences in the association between caloric intake, macronutrient intake, and physical activity with obesity. *Obesity Research & Clinical Practice*. 2016;10(3):243–55. **This study provides evidence that increasing rates of obesity are not accounted for by changes in diet or activity, supporting the need to pursue alternate etiologies.**
- 5.•• Gore AC, Chappell VA, Fenton SE, Flaws JA, Nadal A, Prins GS, et al. EDC-2: the endocrine society's second scientific statement on endocrine-disrupting chemicals. *Endocr Rev*. 2015;36(6):E1–E150. **Comprehensive review of endocrine disrupting chemicals across all organ systems.**
6. Miura Y, Kato M, Ogino K, Matsui H. Impaired cytosolic Ca²⁺ response to glucose and gastric inhibitory polypeptide in pancreatic beta-cells from triphenyltin-induced diabetic hamster. *Endocrinology*. 1997;138(7):2769–75.
7. Miura Y, Hori Y, Kimura S, Hachiya H, Sakurai Y, Inoue K, et al. Triphenyltin impairs insulin secretion by decreasing glucose-induced NADP(H) and ATP production in hamster pancreatic β -cells. *Toxicology*. 2012;299(2–3):165–71.
8. Miura Y, Matsui H. Triphenyltin impairs a protein kinase A (PKA)-dependent increase of cytosolic Na⁺ and Ca²⁺ and PKA-independent increase of cytosolic Ca²⁺ associated with insulin secretion in hamster pancreatic beta-cells. *Toxicol Appl Pharmacol*. 2006;216(3):363–72.
9. Zuo Z, Wu T, Lin M, Zhang S, Yan F, Yang Z, et al. Chronic exposure to tributyltin chloride induces pancreatic islet cell apoptosis and disrupts glucose homeostasis in male mice. *Environ Sci Technol*. 2014;48(9):5179–86.
10. Zuo Z, Chen S, Wu T, Zhang J, Su Y, Chen Y, et al. Tributyltin causes obesity and hepatic steatosis in male mice. *Environ Toxicol*. 2011;26(1):79–85.
11. Regnier SM, El-Hashani E, Kamau W, Zhang X, Massad NL, Sargis RM. Tributyltin differentially promotes development of a phenotypically distinct adipocyte. *Obesity*. 2015;23(9):1864–71.
12. Grün F, Watanabe H, Zamanian Z, Maeda L, Arima K, Cubacha R, et al. Endocrine-disrupting organotin compounds are potent inducers of adipogenesis in vertebrates. *Mol Endocrinol*. 2006;20(9):2141–55.
13. Kirchner S, Kieu T, Chow C, Casey S, Blumberg B. Prenatal exposure to the environmental obesogen tributyltin predisposes multipotent stem cells to become adipocytes. *Mol Endocrinol*. 2010;24(3):526–39.
14. Douillet C, Currier J, Saunders J, Bodnar WM, Matoušek T, Stýblo M. Methylated trivalent arsenicals are potent inhibitors of glucose stimulated insulin secretion by murine pancreatic islets. *Toxicol Appl Pharmacol*. 2013;267(1):11–5.
15. Fu J, Woods CG, Yehuda-Shnaidman E, Zhang Q, Wong V, Collins S, et al. Low-level arsenic impairs glucose-stimulated insulin secretion in pancreatic beta cells: involvement of cellular adaptive response to oxidative stress. *Environ Health Perspect*. 2010;118(6):864–70.
16. Díaz-Villaseñor A, Burns AL, Salazar AM, Sordo M, Hiriart M, Cebrián ME, et al. Arsenite reduces insulin secretion in rat pancreatic beta-cells by decreasing the calcium-dependent calpain-10 proteolysis of SNAP-25. *Toxicol Appl Pharmacol*. 2008;231(3):291–9.
17. Díaz-Villaseñor A, Sánchez-Soto MC, Cebrián ME, Ostrosky-Wegman P, Hiriart M. Sodium arsenite impairs insulin secretion and transcription in pancreatic beta-cells. *Toxicol Appl Pharmacol*. 2006;214(1):30–4.
18. Zhu X-X, Yao X-F, Jiang L-P, Geng C-Y, Zhong L-F, Yang G, et al. Sodium arsenite induces ROS-dependent autophagic cell death in pancreatic β -cells. *Food Chem Toxicol*. 2014;70:144–50.
19. Yao X-F, Zheng B-L, Bai J, Jiang L-P, Zheng Y, Qi B-X, et al. Low-level sodium arsenite induces apoptosis through inhibiting TrxR activity in pancreatic β -cells. *Environ Toxicol Pharmacol*. 2015;40(2):486–91.
20. Paul DS, Harmon AW, Devesa V, Thomas DJ, Stýblo M. Molecular mechanisms of the diabetogenic effects of arsenic: inhibition of insulin signaling by arsenite and methylarsonous acid. *Environ Health Perspect*. 2007;115(5):734–42.
21. Xue P, Hou Y, Zhang Q, Woods CG, Yarborough K, Liu H, et al. Prolonged inorganic arsenite exposure suppresses insulin-stimulated AKT S473 phosphorylation and glucose uptake in 3T3-L1 adipocytes: involvement of the adaptive antioxidant response. *Biochem Biophys Res Commun*. 2011;407(2):360–5.
22. Huang C-F, Yang C-Y, Chan D-C, Wang C-C, Huang K-H, Wu C-C, et al. Arsenic exposure and glucose intolerance/insulin resistance in estrogen-deficient female mice. *Environ Health Perspect*. 2015;123(11):1138–44.
23. Rodriguez KF, Ungewitter EK, Crespo-Mejias Y, Liu C, Nicol B, Kissling GE, et al. Effects of in utero exposure to arsenic during the second half of gestation on reproductive end points and metabolic parameters in female CD-1 mice. *Environ Health Perspect*. 2016;124(3):336–43.
24. Dávila-Esqueda ME, Morales JMV, Jiménez-Capdeville ME, la Cruz DE, Falcón-Escobedo R, Chi-Ahumada E, et al. Low-level subchronic arsenic exposure from prenatal developmental stages to adult life results in an impaired glucose homeostasis. *Exp Clin Endocrinol Diabetes*. 2011;119(10):613–617–617.
25. Muayed El M, Raja MR, Zhang X, MacRenaris KW, Bhatt S, Chen X, et al. Accumulation of cadmium in insulin-producing β cells. *Islets*. 2012;4(6):405–16.
26. Chang K-C, Hsu C-C, Liu S-H, Su C-C, Yen C-C, Lee M-J, et al. Cadmium induces apoptosis in pancreatic β -cells through a mitochondria-dependent pathway: the role of oxidative stress-mediated c-Jun N-terminal kinase activation. *PLoS One*. 2013;8(2):e54374.
27. Han JC, Park SY, Hah BG, Choi GH, Kim YK, Kwon TH, et al. Cadmium induces impaired glucose tolerance in rat by down-regulating GLUT4 expression in adipocytes. *Arch Biochem Biophys*. 2003;413(2):213–20.
28. Treviño S, Waalkes MP, Flores Hernández JA, León-Chavez BA, Aguilar-Alonso P, Brambila E. Chronic cadmium exposure in rats produces pancreatic impairment and insulin resistance in multiple peripheral tissues. *Arch Biochem Biophys*. 2015;583:27–35.
29. Chen Y-W, Huang C-F, Yang C-Y, Yen C-C, Tsai K-S, Liu S-H. Inorganic mercury causes pancreatic beta-cell death via the oxidative stress-induced apoptotic and necrotic pathways. *Toxicol Appl Pharmacol*. 2010;243(3):323–31.

30. Chen Y-W, Huang C-F, Tsai K-S, Yang R-S, Yen C-C, Yang C-Y, et al. The role of phosphoinositide 3-kinase/Akt signaling in low-dose mercury-induced mouse pancreatic beta-cell dysfunction in vitro and in vivo. *Diabetes*. 2006;55(6):1614–24.
31. Song L, Xia W, Zhou Z, Li Y, Lin Y, Wei J, et al. Low-level phenolic estrogen pollutants impair islet morphology and β -cell function in isolated rat islets. *J Endocrinol*. 2012;215(2):303–11.
32. Kim J, Kang E-J, Park M-N, Kim J-E, Kim S-C, Jeung E-B, et al. The adverse effect of 4-tert-octylphenol on fat metabolism in pregnant rats via regulation of lipogenic proteins. *Environ Toxicol Pharmacol*. 2015;40(1):284–91.
33. Xin F, Jiang L, Liu X, Geng C, Wang W, Zhong L, et al. Bisphenol A induces oxidative stress-associated DNA damage in INS-1 cells. *Mutat Res Genet Toxicol Environ Mutagen*. 2014;769:29–33.
34. Bodin J, Bolling AK, Becher R, Kuper F, Lovik M, Nygaard UC. Transmaternal bisphenol A exposure accelerates diabetes type 1 development in NOD mice. *Toxicol Sci*. 2014;137(2):311–23. **This study demonstrates that in utero BPA exposure can exacerbate β -cell decline in a mouse model of Type 1 diabetes.**
35. Batista TM, Alonso-Magdalena P, Vieira E, Amaral MEC, Cederroth CR, Nef S, et al. Short-term treatment with bisphenol-A leads to metabolic abnormalities in adult male mice. *PLoS One*. 2012;7(3):e33814.
36. Valentino R, D’Esposito V, Passaretti F, Liotti A, Cabaro S, Longo M, et al. Bisphenol-A impairs insulin action and up-regulates inflammatory pathways in human subcutaneous adipocytes and 3T3-L1 cells. *PLoS ONE. Public Library of Science*. 2013;8(12):e82099.
37. Moon MK, Jeong I-K, Jung Oh T, Ahn HY, Kim HH, Park YJ, et al. Long-term oral exposure to bisphenol A induces glucose intolerance and insulin resistance. *J Endocrinol*. 2015;226(1):35–42.
38. Indumathi D, Jayashree S, Selvaraj J, Sathish S, Mayilvanan C, Akilavalli N, et al. Effect of bisphenol-A on insulin signal transduction and glucose oxidation in skeletal muscle of adult male albino rat. *Human & Experimental Toxicology*. 2013;32(9):960–71.
39. Sakurai K, Kawazuma M, Adachi T, Harigaya T, Saito Y, Hashimoto N, et al. Bisphenol A affects glucose transport in mouse 3T3-F442A adipocytes. *British Journal of Pharmacology Blackwell Publishing Ltd*. 2004;141(2):209–14.
40. Ohlstein JF, Strong AL, McLachlan JA, Gimble JM, Burow ME, Bunnell BA. Bisphenol A enhances adipogenic differentiation of human adipose stromal/stem cells. *J Mol Endocrinol*. 2014;53(3):345–53.
41. Ariemma F, D’Esposito V, Liguoro D, Oriente F, Cabaro S, Liotti A, et al. Low-dose bisphenol-A impairs adipogenesis and generates dysfunctional 3T3-L1 adipocytes. *PLoS One*. 2016;11(3):e0150762. **This study demonstrates that BPA exposure can promote the genesis of dysfunctional adipocytes which are detrimental to metabolic health, an understudied area of MDC effects.**
42. Alonso-Magdalena P, Vieira E, Soriano S, Menes L, Burks D, Quesada I, et al. Bisphenol A exposure during pregnancy disrupts glucose homeostasis in mothers and adult male offspring. *Environ Health Perspect*. 2010;118(9):1243–50.
43. García-Arévalo M, Alonso-Magdalena P, Servitja J-M, Boronat-Belda T, Merino B, Villar-Pazos S, et al. Maternal exposure to bisphenol-A during pregnancy increases pancreatic β -cell growth during early life in male mice offspring. *Endocrinology*. 2016;157(11):4158–71. **This study provides evidence that in utero BPA exposure leads to impaired glucose tolerance later in life, which is exacerbated by high fat feeding, demonstrating the interaction between traditional metabolic risk factors and gestational MDC exposure.**
44. Alonso-Magdalena P, García-Arévalo M, Quesada I, Nadal A. Bisphenol-A treatment during pregnancy in mice: a new window of susceptibility for the development of diabetes in mothers later in life. *Endocrinology*. 2015;156(5):1659–70. **This study demonstrates BPA exposure during pregnancy promotes diabetes development later in life and demonstrates that in addition to being a vulnerable window for the fetus, pregnancy is also a vulnerable window for mothers.**
45. Sun X, Lin Y, Huang Q, Shi J, Qiu L, Kang M, et al. Di(2-ethylhexyl) phthalate-induced apoptosis in rat INS-1 cells is dependent on activation of endoplasmic reticulum stress and suppression of antioxidant protection. *J Cell Mol Med*. 2015;19(3):581–94.
46. Rajesh P, Balasubramanian K. Di(2-ethylhexyl)phthalate exposure impairs insulin receptor and glucose transporter 4 gene expression in L6 myotubes. *Human & Experimental Toxicology*. 2014;33(7):685–700.
47. Rajesh P, Sathish S, Srinivasan C, Selvaraj J, Balasubramanian K. Phthalate is associated with insulin resistance in adipose tissue of male rat: role of antioxidant vitamins. *J Cell Biochem*. 2013;114(3):558–69.
48. Martinelli MI, Mocchiutti NO, Bernal CA. Dietary di(2-ethylhexyl)phthalate-impaired glucose metabolism in experimental animals. *Human & Experimental Toxicology*. 2006;25(9):531–8.
49. Campioli E, Martinez-Arguelles DB, Papadopoulos V. In utero exposure to the endocrine disruptor di-(2-ethylhexyl) phthalate promotes local adipose and systemic inflammation in adult male offspring. *Nutr Diabetes*. 2014;4:e115.
50. Fischer LJ, Wagner MA, Madhukar BV. Potential involvement of calcium, CaM kinase II, and MAP kinases in PCB-stimulated insulin release from RINm5F cells. *Toxicol Appl Pharmacol*. 1999;159(3):194–203.
51. Baker NA, Karounos M, English V, Fang J, Wei Y, Stromberg A, et al. Coplanar polychlorinated biphenyls impair glucose homeostasis in lean C57BL/6 mice and mitigate beneficial effects of weight loss on glucose homeostasis in obese mice. *Environ Health Perspect*. 2013;121(1):105–10.
52. Gray SL, Shaw AC, Gagne AX, Chan HM. Chronic exposure to PCBs (Aroclor 1254) exacerbates obesity-induced insulin resistance and hyperinsulinemia in mice. *J Toxicol Environ Health Part A*. 2013;76(12):701–15.
53. Nishiumi S, Yoshida M, Azuma T, Yoshida KI, Ashida H. 2,3,7,8-Tetrachlorodibenzo-p-dioxin impairs an insulin signaling pathway through the induction of tumor necrosis factor- α in adipocytes. *Toxicol Sci*. 2010;115(2):482–91.
54. Liu PC, Matsumura F. Differential effects of 2,3,7,8-tetrachlorodibenzo-p-dioxin on the “adipose-type” and “brain-type” glucose transporters in mice. *Mol Pharmacol American Society for Pharmacology and Experimental Therapeutics*. 1995;47(1):65–73.
55. Zhang W, Sargis RM, Volden PA, Carmean CM, Sun XJ, Brady MJ. PCB 126 and other dioxin-like PCBs specifically suppress hepatic PEPCK expression via the aryl hydrocarbon receptor. *Andrabi SA, editor. PLoS One*. 2012;7(5):e37103.
56. Novelli M, Piaggi S, De Tata V. 2,3,7,8-Tetrachlorodibenzo-p-dioxin-induced impairment of glucose-stimulated insulin secretion in isolated rat pancreatic islets. *Toxicol Lett*. 2005;156(2):307–14.
57. Piaggi S, Novelli M, Martino L, Masini M, Raggi C, Orciuolo E, et al. Cell death and impairment of glucose-stimulated insulin secretion induced by 2,3,7,8-tetrachlorodibenzo-p-dioxin (TCDD) in the β -cell line INS-1E. *Toxicol Appl Pharmacol*. 2007;220(3):333–40.
58. Kim Y-H, Shim Y-J, Shin Y-J, Sul D, Lee E, Min B-H. 2,3,7,8-tetrachlorodibenzo-p-dioxin (TCDD) induces calcium influx through T-type calcium channel and enhances lysosomal

- exocytosis and insulin secretion in INS-1 cells. *Int J Toxicol*. 2009;28(3):151–61.
59. Kurita H, Yoshioka W, Nishimura N, Kubota N, Kadowaki T, Tohyama C. Aryl hydrocarbon receptor-mediated effects of 2,3,7,8-tetrachlorodibenzo-p-dioxin on glucose-stimulated insulin secretion in mice. *Journal of Applied Toxicology John Wiley & Sons, Ltd*. 2009;29(8):689–94.
 60. Beggs KM, McGreal SR, McCarthy A, Gunewardena S, Lampe JN, Lau C, et al. The role of hepatocyte nuclear factor 4-alpha in perfluorooctanoic acid- and perfluorooctanesulfonic acid-induced hepatocellular dysfunction. *Toxicol Appl Pharmacol*. 2016;304:18–29.
 61. Hines EP, White SS, Stanko JP, Gibbs-Flourmoy EA, Lau C, Fenton SE. Phenotypic dichotomy following developmental exposure to perfluorooctanoic acid (PFOA) in female CD-1 mice: low doses induce elevated serum leptin and insulin, and overweight in mid-life. *Mol Cell Endocrinol*. 2009;304(1–2):97–105.
 62. Wan HT, Zhao YG, Leung PY, Wong CKC. Perinatal exposure to perfluorooctane sulfonate affects glucose metabolism in adult offspring. *PLoS One*. 2014;9(1):e87137.
 63. Yan S, Zhang H, Zheng F, Sheng N, Guo X, Dai J. Perfluorooctanoic acid exposure for 28 days affects glucose homeostasis and induces insulin hypersensitivity in mice. *Sci Rep*. 2015.
 64. Sargis RM, Neel BA, Brock CO, Lin Y, Hickey AT, Carlton DA, et al. The novel endocrine disruptor tolylfluorid impairs insulin signaling in primary rodent and human adipocytes through a reduction in insulin receptor substrate-1 levels. *Biochim Biophys Acta (BBA) - Mol Basis Dis*. 2012;1822(6):952–60.
 65. Sargis RM, Johnson DN, Choudhury RA, Brady MJ. Environmental endocrine disruptors promote adipogenesis in the 3T3-L1 cell line through glucocorticoid receptor activation. *Obesity*. 2010;18(7):1283–8.
 66. Regnier SM, Kirkley AG, Ye H, El-Hashani E, Zhang X, Neel BA, et al. Dietary exposure to the endocrine disruptor tolylfluorid promotes global metabolic dysfunction in male mice. *Endocrinology*. 2015;156(3):896–910. **This study investigates the role of TF in disrupting glucocorticoid signaling, an understudied area of MDC disruption.**
 67. Jin Y, Lin X, Miao W, Wang L, Wu Y, Fu Z. Oral exposure of pubertal male mice to endocrine-disrupting chemicals alters fat metabolism in adult livers. *Environ Toxicol*. 2015;30(12):1434–44.
 68. Lim S, Ahn SY, Song IC, Chung MH, Jang HC, Park KS, et al. Chronic exposure to the herbicide, atrazine, causes mitochondrial dysfunction and insulin resistance. *PLoS One*. 2009;4(4):e5186.
 69. Zheng Z, Xu X, Zhang X, Wang A, Zhang C, Hüttemann M, et al. Exposure to ambient particulate matter induces a NASH-like phenotype and impairs hepatic glucose metabolism in an animal model. *J Hepatol*. 2013;58(1):148–54. **This study showed that air pollution can trigger hepatic steatosis and impair glucose metabolism, providing evidence for population studies linking metabolic disease to air quality.**
 70. Sun Q, Yue P, DeJulius JA, Lumeng CN, Kampfrath T, Mikolaj MB, et al. Ambient air pollution exaggerates adipose inflammation and insulin resistance in a mouse model of diet-induced obesity. *Circulation*. 2009;119(4):538–46.
 71. Yan Y-H, Chou CC, Lee C-T, Liu J-Y, Cheng T-J. Enhanced insulin resistance in diet-induced obese rats exposed to fine particles by instillation. *Inhal Toxicol*. 2011;23(9):507–19.
 72. da Rocha FJ, Ogurtsova K, Linnenkamp U, Guariguata L, Seuring T, Zhang P, et al. IDF Diabetes Atlas estimates of 2014 global health expenditures on diabetes. *Diabetes Res Clin Pract*. 2016;117:48–54.
 73. Kahn SE, Hull RL, Utzschneider KM. Mechanisms linking obesity to insulin resistance and type 2 diabetes. *Nature* Nature Publishing Group. 2006;444(7121):840–6.
 74. Fu Z, Gilbert ER, Liu D. Regulation of insulin synthesis and secretion and pancreatic Beta-cell dysfunction in diabetes. *Curr Diabetes Rev*. 2013;9(1):25–53.
 75. Schwartz SS, Epstein S, Corkey BE, Grant SFA, Gavin JR, Aguilar RB. The time is right for a new classification system for diabetes: rationale and implications of the β -cell-centric classification schema. *Dia Care*. 2016;39(2):179–86.
 76. Yabe D, Seino Y. Two incretin hormones GLP-1 and GIP: comparison of their actions in insulin secretion and β cell preservation. *Prog Biophys Mol Biol*. 2011;107(2):248–56.
 77. Shankar S, Shanker U, Shikha. Arsenic contamination of groundwater: a review of sources, prevalence, health risks, and strategies for mitigation. *Scientific World Journal*. 2014;2014:304524.
 78. Ropero AB, Fuentes E, Rovira JM, Ripoll C, Soria B, Nadal A. Non-genomic actions of 17 β -oestradiol in mouse pancreatic beta-cells are mediated by a cGMP-dependent protein kinase. *J Physiol Lond*. 1999;521(Pt 2):397–407.
 79. Soriano S, Ropero AB, Alonso-Magdalena P, Ripoll C, Quesada I, Gassner B, et al. Rapid regulation of KATP channel activity by 17 β -estradiol in pancreatic β -cells involves the estrogen receptor β and the atrial natriuretic peptide receptor. *Mol Endocrinol*. 2009;23(12):1973–82.
 80. Mauvais-Jarvis F, Clegg DJ, Hevener AL. The role of estrogens in control of energy balance and glucose homeostasis. *Endocr Rev*. 2013;34(3):309–38.
 81. Alonso-Magdalena P, Ropero AB, Soriano S, García-Arévalo M, Ripoll C, Fuentes E, et al. Bisphenol-A acts as a potent estrogen via non-classical estrogen triggered pathways. *Mol Cell Endocrinol*. 2012;355(2):201–7.
 82. Nadal A, Alonso-Magdalena P, Soriano S, Quesada I, Ropero AB. The pancreatic beta-cell as a target of estrogens and xenoestrogens: implications for blood glucose homeostasis and diabetes. *Mol Cell Endocrinol*. 2009;304(1–2):63–8.
 83. Schuit FC, In't Veld PA, Pipeleers DG. Glucose stimulates proinsulin biosynthesis by a dose-dependent recruitment of pancreatic beta cells. *Proc Natl Acad Sci U S A*. 1988;85(11):3865–9.
 84. Hasnain SZ, Prins JB, McGuckin MA. Oxidative and endoplasmic reticulum stress in β -cell dysfunction in diabetes. *J Mol Endocrinol*. 2016;56(2):R33–54.
 85. Eizirik DL, Cardozo AK, Cnop M. The role for endoplasmic reticulum stress in diabetes mellitus. *Endocr Rev*. 2008;29(1):42–61.
 86. Kuo C-C, Moon K, Thayer KA, Navas-Acien A. Environmental chemicals and type 2 diabetes: an updated systematic review of the epidemiologic evidence. *Curr Diab Rep*. 2013;13(6):831–49.
 87. Pi J, Bai Y, Zhang Q, Wong V, Floering LM, Daniel K, et al. Reactive oxygen species as a signal in glucose-stimulated insulin secretion. *Diabetes*. 2007;56(7):1783–91.
 88. Bodin J, Bølling AK, Samuelsen M, Becher R, Løvik M, Nygaard UC. Long-term bisphenol A exposure accelerates insulinitis development in diabetes-prone NOD mice. *Immunopharmacol Immunotoxicol*. 2013;35(3):349–58.
 89. Boucher J, Kleinridders A, Kahn CR. Insulin receptor signaling in normal and insulin-resistant states. *Cold Spring Harb Perspect Biol*. 2014;6(1):a009191.
 90. Wang T, Li M, Chen B, Xu M, Xu Y, Huang Y, et al. Urinary bisphenol A (BPA) concentration associates with obesity and insulin resistance. *J Clin Endocrinol Metab*. 2012;97(2):E223–7.
 91. Beydoun HA, Khanal S, Zonderman AB, Beydoun MA. Sex differences in the association of urinary bisphenol-A concentration with selected indices of glucose homeostasis among U.S. adults. *Ann Epidemiol*. 2014;24(2):90–7.

92. Pearson JF, Bachireddy C, Shyamprasad S, Goldfine AB, Brownstein JS. Association Between fine particulate matter and diabetes prevalence in the U.S. Dia Care. American Diabetes Association. 2010;33(10):2196–201.
93. Cranmer M. Exposure to 2,3,7,8-tetrachlorodibenzo-p-dioxin (TCDD) is associated with hyperinsulinemia and insulin resistance. *Toxicol Sci*. 2000;56(2):431–6.
94. Stahlhut RW, van Wijngaarden E, Dye TD, Cook S, Swan SH. Concentrations of urinary phthalate metabolites are associated with increased waist circumference and insulin resistance in adult U.S. males. *Environ Health Perspect*. 2007;115(6):876–82.
95. James-Todd TM, Meeker JD, Huang T, Hauser R, Ferguson KK, Rich-Edwards JW, et al. Pregnancy urinary phthalate metabolite concentrations and gestational diabetes risk factors. *Environ Int*. 2016;96:118–26.
96. Rajesh P, Balasubramanian K. Phthalate exposure in utero causes epigenetic changes and impairs insulin signalling. *J Endocrinol*. 2014;223(1):47–66.
97. Shulman GI, Rothman DL, Jue T, Stein P, DeFronzo RA, Shulman RG. Quantitation of muscle glycogen synthesis in normal subjects and subjects with non-insulin-dependent diabetes by ¹³C nuclear magnetic resonance spectroscopy. *N Engl J Med*. 1990;322(4):223–8.
98. Heindel JJ, Blumberg B, Cave M, Machtiger R, Mantovani A, Mendez MA, et al. Metabolism disrupting chemicals and metabolic disorders. *Reprod Toxicol*. 2016. **Recent comprehensive review of metabolism disrupting chemicals.**
99. Ruzzin J, Petersen R, Meugnier E, Madsen L, Lock E-J, Lillefosse H, et al. Persistent organic pollutant exposure leads to insulin resistance syndrome. *Environ Health Perspect*. 2010 Apr;118(4):465–71.
100. García-Arévalo M, Alonso-Magdalena P, Rebelo Dos Santos J, Quesada I, Carneiro EM, Nadal A. Exposure to bisphenol-A during pregnancy partially mimics the effects of a high-fat diet altering glucose homeostasis and gene expression in adult male mice. *PLoS One*. 2014;9(6):e100214.
101. Jayashree S, Indumathi D, Akilavalli N, Sathish S, Selvaraj J, Balasubramanian K. Effect of bisphenol-A on insulin signal transduction and glucose oxidation in liver of adult male albino rat. *Environ Toxicol Pharmacol*. 2013;35(2):300–10.
102. Beischlag TV, Luis Morales J, Hollingshead BD, Perdew GH. The aryl hydrocarbon receptor complex and the control of gene expression. *Crit Rev Eukaryot Gene Expr*. 2008;18(3):207–50.
103. Seefeld MD, Corbett SW, Keesey RE, Peterson RE. Characterization of the wasting syndrome in rats treated with 2,3,7,8-tetrachlorodibenzo-p-dioxin. *Toxicol Appl Pharmacol*. 1984;73(2):311–22.
104. Warner M, Mocarelli P, Brambilla P, Wesselink A, Samuels S, Signorini S, et al. Diabetes, metabolic syndrome, and obesity in relation to serum dioxin concentrations: the Seveso women's health study. *Environ Health Perspect*. 2013;121(8):906–11.
105. Kern PA, Said S, Jackson WG, Michalek JE. Insulin sensitivity following agent orange exposure in Vietnam veterans with high blood levels of 2,3,7,8-tetrachlorodibenzo-p-dioxin. *J Clin Endocrinol Metab*. 2004;89(9):4665–72.
106. Guilherme A, Virbasius JV, Puri V, Czech MP. Adipocyte dysfunctions linking obesity to insulin resistance and type 2 diabetes. *Nat Rev Mol Cell Biol Nature Publishing Group*. 2008;9(5):367–77.
107. Janesick AS, Blumberg B. Obesogens: an emerging threat to public health. *Am J Obstet Gynecol*. 2016;214(5):559–65.
108. Agarwal AK, Garg A. A novel heterozygous mutation in peroxisome proliferator-activated receptor-gamma gene in a patient with familial partial lipodystrophy. *J Clin Endocrinol Metab*. 2002;87(1):408–11.
109. Desvergne B, Feige JN, Casals-Casas C. PPAR-mediated activity of phthalates: a link to the obesity epidemic? *Mol Cell Endocrinol*. 2009;304(1–2):43–8.
110. Grün F, Blumberg B. Environmental obesogens: organotins and endocrine disruption via nuclear receptor signaling. *Endocrinology Endocrine Society*. 2006;147(6):s50–5.
111. Neel BA, Brady MJ, Sargis RM. The endocrine disrupting chemical tolylfluorid alters adipocyte metabolism via glucocorticoid receptor activation. *Mol Endocrinol*. 2013;27(3):394–406.
112. Nieman LK, Biller BMK, Findling JW, Newell-Price J, Savage MO, Stewart PM, et al. The diagnosis of Cushing's syndrome: an endocrine society clinical practice guideline. *J Clin Endocrinol Metab*. 2008;93:1526–40.
113. van Herpen NA, Schrauwen-Hinderling VB. Lipid accumulation in non-adipose tissue and lipotoxicity. *Physiol Behav*. 2008;94(2):231–41.
114. Hotamisligil GS, Shargill NS. Adipose expression of tumor necrosis factor- α : direct role in obesity-linked insulin resistance. *Science*. 1993;259(5091):87–91.
115. de Luca C, Olefsky JM. Inflammation and insulin resistance. *FEBS Lett*. 2008;582(1):97–105.
116. Yitshak Sade M, Kloog I, Liberty IF, Schwartz J, Novack V. The association between air pollution exposure and glucose and lipids levels. *J Clin Endocrinol Metab*. 2016;101(6):2460–7.
117. Kim MJ, Pelloux V, Guyot E, Tordjman J, Bui L-C, Chevallier A, et al. Inflammatory pathway genes belong to major targets of persistent organic pollutants in adipose cells. *Environ Health Perspect*. 2012;120(4):508–14.
118. Alonso-Magdalena P, Quesada I, Nadal A. Prenatal exposure to BPA and offspring outcomes: the diabetesogenic behavior of BPA. *Dose Response*. 2015;13(2):1559325815590395.
119. Wei J, Lin Y, Li Y, Ying C, Chen J, Song L, et al. Perinatal exposure to bisphenol A at reference dose predisposes offspring to metabolic syndrome in adult rats on a high-fat diet. *Endocrinology*. 2011;152(8):3049–61.
120. Ryan KK, Haller AM, Sorrell JE, Woods SC, Jandacek RJ, Seeley RJ. Perinatal exposure to bisphenol-a and the development of metabolic syndrome in CD-1 mice. *Endocrinology*. 2010;151(6):2603–12.
121. Paul DS, Walton FS, Saunders RJ, Stýblo M. Characterization of the impaired glucose homeostasis produced in C57BL/6 mice by chronic exposure to arsenic and high-fat diet. *Environ Health Perspect*. 2011;119(8):1104–9.
122. Longo VD, Panda S. Fasting, circadian rhythms, and time-restricted feeding in healthy lifespan. *Cell Metabolism*. 2016.
123. Beydoun HA, Beydoun MA, Jeng HA, Zonderman AB, Eid SM. Bisphenol-A and sleep adequacy among adults in the National Health and Nutrition Examination Surveys. *Sleep*. 2016;39(2):467–76.
124. Weber DN, Hoffmann RG, Hoke ES, Tanguay RL. Bisphenol A exposure during early development induces sex-specific changes in adult zebrafish social interactions. *J Toxicol Environ Health Part A*. 2015;78(1):50–66.
125. Rhee J-S, Kim B-M, Lee B-Y, Hwang U-K, Lee YS, Lee J-S. Cloning of circadian rhythmic pathway genes and perturbation of oscillation patterns in endocrine disrupting chemicals (EDCs)-exposed mangrove killifish *Kryptolebias marmoratus*. *Comp Biochem Physiol C Toxicol Pharmacol*. 2014;164:11–20. **This study demonstrates the links between MDCs and circadian biology.**
126. Pearson ER, Flechtner I, Njølstad PR, Malecki MT, Flanagan SE, Larkin B, et al. Switching from insulin to oral sulfonylureas in patients with diabetes due to Kir6.2 mutations. *N Engl J Med*. 2006;355(5):467–77.

127. Grossman SL, Lessem J. Mechanisms and clinical effects of thiazolidinediones. *Expert Opin Investig Drugs*. 1997;6(8): 1025–40.
128. Joseph GY, Javorschi S, Hevener AL. The effect of thiazolidinediones on plasma adiponectin levels in normal, obese, and type 2 diabetic subjects. *Diabetes*. 2002.
129. Boden G, Homko C, Mozzoli M, Showe LC, Nichols C, Cheung P. Thiazolidinediones upregulate fatty acid uptake and oxidation in adipose tissue of diabetic patients. *Diabetes*. 2005;54(3):880–5.
130. de Souza CJ, Eckhardt M, Gagen K, Dong M, Chen W, Laurent D, et al. Effects of pioglitazone on adipose tissue remodeling within the setting of obesity and insulin resistance. *Diabetes American Diabetes Association*. 2001;50(8): 1863–71.
131. Hill DS, Wlodarczyk BJ, Mitchell LE, Finnell RH. Arsenate-induced maternal glucose intolerance and neural tube defects in a mouse model. *Toxicol Appl Pharmacol*. 2009;239(1): 29–36.