

Variation and heritability of morphological and physiological traits among *Leymus chinensis* genotypes under different environmental conditions

YANG Xue, LI Junpeng, ZHAO Tingting, MO Lidong, ZHANG Jianli, REN Huiqin, ZHAO Nianxi*, GAO Yubao

Department of Plant Biology and Ecology, College of Life Science, Nankai University, Tianjin 300071, China

Abstract: Intraspecific trait variation and heritability in different environmental conditions not only suggest a potential for an evolutionary response but also have important ecological consequences at the population, community, and ecosystem levels. However, the contribution of quantitative trait variation within a grassland species to evolutionary responses or ecological consequences is seldom documented. *Leymus chinensis* is an important dominant species in semi-arid grasslands of China, which has seriously suffered from drought and high temperature stresses in recent decades. In the present study, we measured variation and heritability of 10 quantitative traits, namely the number of tillers, maximum shoot height, number of rhizomes, maximum rhizome length, rhizome mass, aboveground mass, root mass, maximum net photosynthetic rate (P_{\max}), specific leaf area (SLA), and leaf length to leaf width ratio (L_L/L_W), for 10 genotypes of *L. chinensis* under one non-stress (Ck) condition and three environmental stress conditions (i.e., drought (Dr), high temperature (Ht), and both drought and high temperature (DrHt)). Result indicated that (1) the interaction of genotype and environmental condition (G×E) was significant for 6 traits but not significant for the other 4 traits as shown by two-way analysis of variance (ANOVA), suggesting that different selection forces were placed for different traits on the factors dominating phenotypic responses to different environmental conditions. Moreover, these significant G×E effects on traits indicated significantly different phenotypic adaptive responses among *L. chinensis* genotypes to different environmental conditions. Additionally, individuals could be grouped according to environmental condition rather than genotype as shown by canonical discriminant analysis, indicating that environmental condition played a more important role in affecting phenotypic variation than genotype; (2) by one-way ANOVA, significant differences among *L. chinensis* genotypes were found in all 10 traits under Ck and Dr conditions, in 8 traits under DrHt condition and only in 4 traits under Ht condition; and (3) all 10 traits showed relatively low or non-measurable broad-sense heritability (H^2) under stress conditions. However, the lowest H^2 value for most traits did not occur under DrHt condition, which supported the hypothesis of 'unfavorable conditions have unpredictable effects' rather than 'unfavorable conditions decrease heritability'. Results from our experiment might aid to improve predictions on the potential impacts of climate changes on *L. chinensis* and eventually species conservation and ecosystem restoration.

Keywords: *Leymus chinensis*; genotype; quantitative trait variation; heritability; drought; high temperature

Citation: YANG Xue, LI Junpeng, ZHAO Tingting, MO Lidong, ZHANG Jianli, REN Huiqin, ZHAO Nianxi, GAO Yubao. 2019. Variation and heritability of morphological and physiological traits among *Leymus chinensis* genotypes under different environmental conditions. Journal of Arid Land, 11(1): 66–74. <https://doi.org/10.1007/s40333-018-0018-x>

*Corresponding author: ZHAO Nianxi (E-mail: zhaonianxi@nankai.edu.cn)

Received 2017-10-11; revised 2018-01-19; accepted 2018-05-10

© Xinjiang Institute of Ecology and Geography, Chinese Academy of Sciences, Science Press and Springer-Verlag GmbH Germany, part of Springer Nature 2019

1 Introduction

Quantitative trait variation among genotypes within a species has important ecological consequences at the population, community, and ecosystem levels (Hughes et al., 2008; Kraft et al., 2014; Crutsinger, 2016). For instance, trait variation in resource acquisition or competitiveness will affect plant community dynamics in natural ecosystem. However, quantitative trait variation within a species is proved to be specific to populations and environments (Pigliucci, 2005; Smith et al., 2016). Moreover, heritability, the proportion of the variation in a given trait within a population that is not explained by environmental effect, is usually affected by environmental conditions (Charmantier and Garant, 2005; Hallsson and Bjorklund, 2012). Therefore, understanding trait variation and heritability under different environmental conditions is important to determine the dynamics and evolutionary potential of populations inhabiting heterogeneous environments, and to predict the fate of populations under environmental change. Although there is more and more recognition of the importance of trait variation within a species to ecological processes and adaptation to environment (Bolnick et al., 2011), the influence of environmental conditions on trait variation and heritability in grassland species is seldom understood.

Genotypic diversity of dominant species could perform similar ecosystem processes as species diversity (Crawford and Rudgers, 2013; Treplin et al., 2013) and their presence may alter abiotic conditions and/or create a habitat for other species (Crutsinger et al., 2010; Gustafson et al., 2014). Therefore, high quantitative trait variation among genotypes may enhance community stability or resilience (Prieto et al., 2015; Espeland et al., 2017), which is important in ecological conservation and restoration biology (Bischoff et al., 2010; Nicotra et al., 2010), especially in ecosystems with low species diversity.

Leymus chinensis, a perennial C₃ species of the Poaceae family, is a widely spread dominant species in semi-arid grasslands in East Asia, including China, Japan, Mongolia and eastern Russia (Qiu et al., 1996), and has important effects on community structure and function (Bai et al., 2004). The ability of *L. chinensis* to reproduce clonally through rhizomes allows a single genotype to dominate a certain area. Thus, the effects of variation among genotypes on the ecosystem processes could be maintained for a long period over time and influenced a large area of steppe (Wang et al., 2004). Understanding the degree of genotypic variation is important, because *L. chinensis* plays a key role in structuring of the steppe community. Moreover, *L. chinensis* is the target of extensive restoration in some area, and ecological variation among genotypes in different environments could play a previously unrecognized role in the success of these efforts facing global climate change. Studies characterizing genetic variation based on random amplified polymorphic DNA (RAPD; Wang et al., 2005), amplified fragment length polymorphism (AFLP; Xu et al., 2006) and quantitative traits (Liu et al., 2007) indicated that *L. chinensis* showed a high genetic and phenotypic diversity. However, how trait heritability of *L. chinensis* varies in the face of environmental change is still not known, and the important role of the variation of heritability in unstable environments has not been mentioned.

Semi-arid steppe of China has severely degraded during recent decades due to water shortage, combined with higher temperatures that have occurred during its peak growth period in the middle of summer (Xu and Zhou, 2006). Previous studies indicated that drought and high temperature had significant effects on growth and leaf traits of *L. chinensis*, and the effects of the combination of the two stress factors would be exacerbated at the population level (Xu and Zhou, 2006). In this study, we quantified genotypic variation and broad-sense heritability of 10 quantitative traits of *L. chinensis* related to growth, production, and leaf characteristics under one non-stress and three environmental stress conditions (i.e., drought, high temperature and both drought and high temperature) to determine whether the pattern of phenotypic variation could be influenced by environmental condition. We hypothesized that (1) *L. chinensis* would exhibit substantial heritable genetic variations in these traits, and (2) there was a stress-induced response of quantitative trait variation to different environments.

2 Materials and methods

2.1 Study materials

Leymus chinensis is a perennial species of the Poaceae family, and mainly reproduces asexually through rhizomes. In March 2009, we selected *L. chinensis* ramets located at least 100 m apart in Xilingol Steppe (43.90°N, 115.34°E) and propagated each ramet in a common garden in Nankai University (39.10°N, 117.16°E) for 10 weeks to further minimize phenotypic difference due to local growth conditions. Genotypes of ramets were identified by AFLP markers and 10 genotypes were used in this study.

2.2 Experimental design

The environmental conditions included a non-stress (Ck) condition in an outdoor shed where soil water content was controlled between 25% and 35%, and three stress conditions, i.e., drought (Dr) condition in an outdoor shed where soil water content was controlled between 5% and 10%; high temperature (Ht) condition in a greenhouse where soil water content was controlled between 25% and 35%, and both drought and high temperature (DrHt) condition in a greenhouse where soil water content was controlled between 5% and 10%, which was the harshest stress condition. The temperature in the greenhouse was controlled to be 10°C higher than that in the shed during day and the night. Soil water content was measured using an ECH₂O soil moisture sensor (EC-5, Decagon Devices Inc., USA) every two days during the period of the whole experiment.

On 15 June, 2010, uniform tillers were planted with one tiller per pot (15 cm×25 cm). Five replicates per genotype per treatment were used, resulting in 200 pots in total (4 environmental conditions×10 genotypes×5 replicates). Soil total carbon and availability of nitrogen and phosphorus were 40.0, 3.0 and 0.6 g/kg, respectively. During the experiment, stresses caused by nutrient shortage or shade were avoided, and regular weeding and insect control were conducted. Pots were randomly reassigned to different positions every two weeks to minimize position effects. The experiment lasted for 123 days and all individuals were harvested on 15 October, 2010.

2.3 Data collection

On 7 October, 2010, the maximum net photosynthetic rate (P_{\max}) of three fully expanded leaves of each individual *L. chinensis* plant was measured using a LI-6400 (LI-COR, Lincoln, USA) at 1200 $\mu\text{mol}/(\text{m}^2\cdot\text{s})$ PPF (photosynthetic photon flux density), which reached the light saturated intensity of *L. chinensis* through observation of the light response curve. Then these fully expanded leaves were collected for the measurements of specific leaf area (SLA) and leaf length/leaf width ratio (L_L/L_W), which followed the methodology used by Cornelissen et al. (2003). At the end of the experiment, the growth and production traits (i.e., the number of tillers, maximum shoot height, number of rhizomes, maximum rhizome length, and rhizome mass (aboveground mass and root mass)) of each individual were quantified as measures of biomass production and colonization ability, respectively. The aboveground, root and rhizome mass were weighted after drying at 80°C to a constant weight.

2.4 Data analysis

First, the experiment focused on the quantitative trait variation among *L. chinensis* genotypes across different environmental conditions. Therefore, two-way analysis of variance (ANOVA) was used to examine the effects of environmental condition (E), genotype (G) and the G×E interaction, with *L. chinensis* genotype as a random factor and environmental condition as a fixed factor.

Second, as the experiment included replications within genotypes, the within-genotype and among-genotype variances could be directly interpreted as the environmental and genetic variations. We used one-way ANOVA to test the variance component of each trait under each treatment, with genotype as a factor. If genotype had a significant effect on a trait, the broad sense heritability (H^2) of this trait was calculated as the ratio of the among-genotype variance component to the total variance component (Lynch and Walsh, 1998).

Third, canonical discriminant analysis was used to identify the multivariate sets of covariant characters because it allows independent investigation of changes in the sets of covariant characters owing to two main effects. The genotypic and environment scores were plotted against the first and second canonical axes in order to visualize their multivariate relationships. The structure of significant canonical vectors was separately determined for environmental condition and genotype.

All statistical analyses were carried out using SPSS 20.0 (IBM, Armonk, NY). Response variables were log transformed as necessary to meet the assumptions of normality and homogeneity of variance.

3 Results

3.1 Trait variation and broad sense heritability

The results of two-way ANOVA showed that all 10 traits were significantly affected by genotype (G) and by environmental condition (E), and that 6 traits, namely the number of tillers, rhizome mass, aboveground mass, root mass, P_{\max} and L_L/L_W , were significantly affected by G×E interaction (Table 1). The plots give more details of the influence of genotype, environmental condition, and their interaction (Fig. 1).

The within-treatment analyses presented that under Ck and Dr conditions, *L. chinensis* genotypes showed significant differences ($P<0.05$) in all 10 traits. The values of H^2 ranged from 0.264 to 0.831 under Ck and from 0.254 to 0.784 under Dr. Under DrHt condition, genotypes showed significant differences ($P<0.05$) in 8 traits and their H^2 values ranged from 0.181 to 0.538. Under Ht condition, genotypes showed significant differences ($P<0.05$) in only 4 traits (i.e., number of rhizomes, P_{\max} , SLA, and L_L/L_W) and their H^2 values ranged from 0.369 to 0.604 (Table 2).

3.2 Canonical discriminant analysis

The canonical discriminant analysis of environmental conditions revealed the clustering of the 102 significant eigenvectors, which collectively explained about 96.04% of the total variance (Table 3) and clearly separated individuals by environmental condition (Fig. 2a). The traits with the significant weights on the first canonical variate (CV1) were P_{\max} and all the growth and

Table 1 Results of two-way ANOVA analyzing effects of genotype (G) and environmental condition (E) on 10 traits of *L. chinensis*

Variable	Genotype (G, $df=9$)		Environmental condition (E, $df=3$)		G×E ($df=27$)		
	F	P	F	P	F	P	
Growth and production traits	Number of tillers	12.43	<0.001	34.49	<0.001	2.24	<0.001
	Maximum shoot height	6.43	<0.001	23.86	<0.001	1.56	0.057
	Number of rhizomes	9.50	<0.001	34.73	<0.001	1.29	0.180
	Maximum rhizome length	5.26	<0.001	46.32	<0.001	1.01	0.457
	Rhizome mass	11.39	<0.001	71.57	<0.001	3.66	<0.001
	Aboveground mass	15.08	<0.001	59.56	<0.001	4.35	<0.001
	Root mass	20.02	<0.001	95.04	<0.001	5.81	<0.001
Leaf traits	P_{\max}	5.85	<0.001	208.55	<0.001	2.61	<0.001
	SLA	7.20	<0.001	28.39	<0.001	1.29	0.180
	L_L/L_W	14.97	<0.001	28.78	<0.001	3.02	<0.001

Note: P_{\max} , the maximum net photosynthetic rate; SLA, specific leaf area; L_L/L_W , leaf length/leaf width ratio.

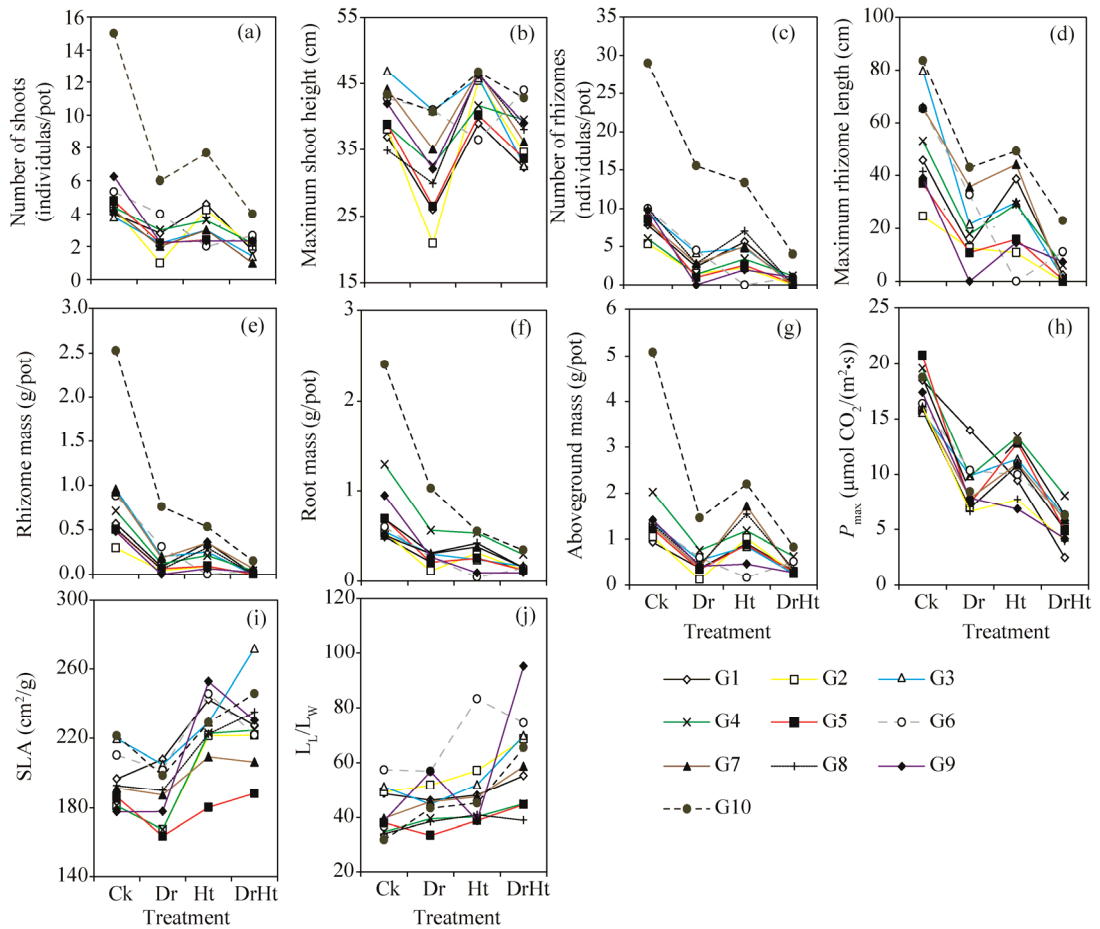


Fig. 1 Quantitative variations of 10 traits (a–j) among 10 genotypes of *L. chinensis* (G1–G10) under four different environmental conditions. P_{max} , the maximum net photosynthetic rate; SLA, specific leaf area; L_L/L_W , leaf length/leaf width ratio. Ck, Dr, Ht, and DrHt represent the environmental conditions of non-stress, drought, high temperature, and both drought and high temperature, respectively.

production traits except the maximum shoot height (Table 3), and CV1 clearly distinguished Ck (with high P_{max} and high ability of growth and production) at the positive end of the Axis 1 from the other environmental conditions, with DrHt at the negative end of the Axis 1 (Fig. 2a). The traits with the significant weights on the second canonical variate (CV2) were maximum shoot height and SLA (Table 3), and CV2 distinguished Ht (with high maximum shoot height and high SLA, at the top of the Axis 2) and Dr (at the bottom of the Axis 2) from DrHt.

The canonical discriminant analysis of genotypes identified two canonical discriminant functions accounting for 61.84% of the total variance (Table 3). The traits with the significant weights on CV1 were the number of tillers, number of rhizomes and aboveground mass, and the traits with the significant weights on CV2 were root mass and L_L/L_W (Table 3). However, individuals could not obviously be separated by genotype (Fig. 2b).

4 Discussion

There was significant variation in 10 traits among *L. chinensis* genotypes as shown by two-way ANOVA, providing the possibility of niche complementarity within a species. For examples, significant variation in maximum rhizome length could reflect the differentiation ability of colonization of new patches; significant variation in root mass could reflect the differentiation ability of belowground resource uptake; significant variation in tillers number and rhizome

Table 2 Significance of difference of these traits resulted from one-way ANOVA analyzing effect of genotype on 10 traits and broad-sense heritability (H^2) under each environmental condition

	Variable	Ck	Dr	Ht	DrHt
Growth and production traits	Number of tillers	0.684**	0.546**	NS	0.516**
	Maximum shoot height	0.346**	0.622**	NS	–
	Number of rhizomes	0.398**	0.387**	0.369*	0.504**
	Maximum rhizome length	0.412**	0.254*	NS	0.563**
	Rhizome mass	0.669**	0.715**	NS	0.204*
	Aboveground mass	0.831**	0.652**	NS	0.356**
	Root mass	0.766**	0.708**	NS	NS
Leaf traits	P_{max}	0.267*	0.462**	0.448**	0.538**
	SLA	0.555**	0.348*	0.380**	0.181*
	L_L/L_W	0.662**	0.372*	0.604**	0.501**

Note: P_{max} , the maximum net photosynthetic rate; SLA, specific leaf area; L_L/L_W , leaf length/leaf width ratio; Ck, non-stress; Dr, drought; Ht, high temperature; DrHt, drought and high temperature; NS, not significant; *, **, and *** indicate significance at $P<0.05$, $P<0.01$, and $P<0.001$ levels, respectively. "–" means no value.

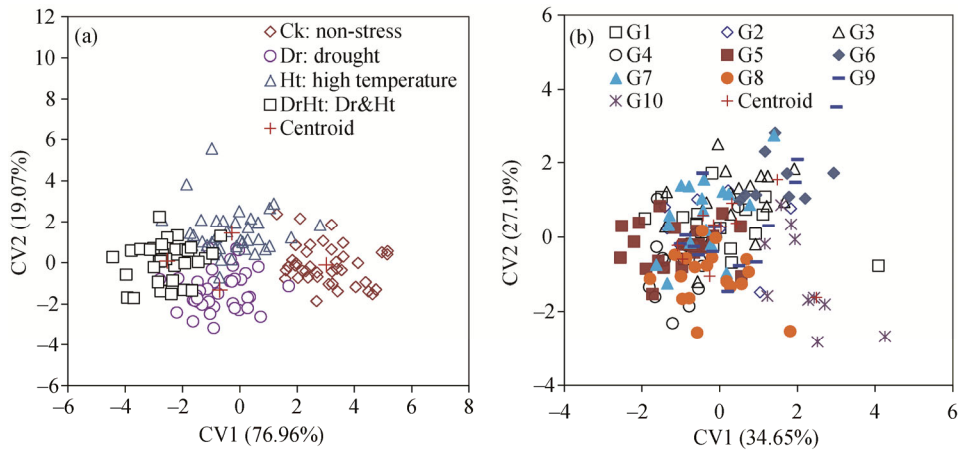


Fig. 2 Results of canonical discriminant analysis on the multivariate space defined by the first two canonical axes. (a) environmental conditions; (b) genotypes. G1–G10 mean the 10 genotypes. CV1, the first canonical variate; CV2, the second canonical variate.

Table 3 Compositions of the first two canonical variates from canonical discriminant analysis of the traits responses of *L. chinensis* by environmental condition and genotype, respectively

Variable	Treatment		Genotype		
	CV1	CV2	CV1	CV2	
Growth and production traits	Number of tillers	0.28*	0.11	0.59*	–0.37
	Maximum shoot height	0.12	0.61*	0.32	0.17
	Number of rhizomes	0.35*	0.09	0.51*	–0.27
	Maximum rhizome length	0.45*	0.11	0.27	–0.03
	Rhizome mass	0.30*	0.02	0.42	–0.14
	Aboveground mass	0.32*	0.25	0.43*	–0.40
	Root mass	0.38*	–0.10	0.34	–0.46*
Leaf traits	P_{max}	0.87*	0.09	–0.01	0.04
	SLA	–0.18	0.52*	0.40	–0.16
	L_L/L_W	–0.21	0.08	0.36	0.63*
	% explained variance	76.96	19.07	34.65	27.19

Note: * means a significant correlation between variable and discriminant function. P_{max} , the maximum net photosynthetic rate; SLA, specific leaf area; L_L/L_W , leaf length/leaf width ratio. CV1, the first canonical variate; CV2, the second canonical variate.

number could lead to reproductive allocation difference; and significant variation in P_{\max} and SLA could reflect differences in photosynthetic capacity and relative growth rate, respectively (Nicotra et al., 2010). These findings suggested that genotypic diversity of *L. chinensis* contributed to niche complementarity as reported by Shen et al. (2015), and indicated the potential ecological functions of genotypic diversity of *L. chinensis* that is the important dominant species in low species diversity or degraded communities in semi-arid steppe of Inner Mongolia. These results highlighted that functional trait variation among genotypes within a species may act in a similar way to species diversity to enhance ecosystem function, and could have measurable effects on population persistence and community structure and function (Cook-Patton et al., 2011; Morris et al., 2016).

The G×E interactions were significant in 6 traits but not significant in the other 4 traits, indicating that different selection forces dominated the evolution of phenotype of *L. chinensis* across environment for different traits. What's more, the significant G×E interaction suggested that the more complex the environment changed, the less possibility that the genotypes would respond in a uniform way. Significant quantitative trait variation among genotypes and significant G×E interaction permitted diverse genotypes to be maintained in populations under variable environmental conditions (Salmela et al., 2016), thus it is very important to increase community stability or resilience (Hughes et al., 2008; Prieto et al., 2015; Dia et al., 2016). However, the results of canonical discriminant analysis indicated that environmental condition rather than genotype played an important part in affecting adaptive plasticity of quantitative traits of *L. chinensis* (Fig. 2), indicating that environmental condition might play more important role in affecting the adaptability of *L. chinensis* and its ecological functions in the community.

There is increasing evidence that the amount and pattern of quantitative trait variation is dependent on environmental conditions (Manaa et al., 2011; Shaw et al., 2016; Yang et al., 2017), which has important consequences for understanding evolution in a changing environment (Draghi and Whitlock, 2012; Hallsson and Björklund, 2012). DrHt are considered to be the major environmental factors affecting plant growth, physiological responses and biochemical and molecular changes in semi-arid areas, and these two stress conditions had very different effects on trait variation of *L. chinensis* (Figs. 1 and 2; Table 2).

Under high temperature condition, SLA and maximum shoot height were highest, and other traits were close to those under non-stress condition (Fig. 1), and 6 traits did not show significant variation among genotypes (Table 2). Stress induced variation may facilitate adaptive evolution, and the adaptive plasticity could produce a mean phenotype that was close to the optimum favored by selection (Badyaev, 2005). On the other hand, it constrained differentiation in a variety of systems (Mittelbach et al., 1999). The present results suggested that high temperature facilitated phenotypic adaptive evolution of *L. chinensis* and that similarity among individuals could significantly facilitate the rate of adaptive evolution (Badyaev, 2005). Adaptive plasticity should promote establishment and persistence in a new environment and would be very important for future adaptive evolution to climate change (Ghalambor et al., 2007).

Under Dr condition, we found relatively lower values of traits, supporting that *L. chinensis* is a relatively drought-sensitive species (Bai et al., 2004; Xu and Zhou, 2006). But, significant differences ($P<0.05$) among *L. chinensis* genotypes were found for all traits, which may be beneficial for population maintenance, species composition and community function when facing drought (Fig. 1; Table 2), because a high diversity provides the raw material for natural selection, which is the key to evolutionary theory (Bolnick et al., 2011).

Any change in heritability might reflect a history of weak selection and/or the accumulation of deleterious mutations in stress conditions (Hoffmann and Merilä, 1999). All 10 traits showed relatively lower or non-measurable broad-sense heritability (H^2) under stress conditions than under the non-stress condition, being consistent with the result of Charmantier and Garant (2005), who found that heritability generally decreased under unfavorable conditions based on meta-analysis data from wild populations. However, under the harshest stress condition, i.e., DrHr condition, H^2 of all traits except SLA was not the lowest. These results supported the hypothesis of "unfavorable conditions have unpredictable effects" rather than "unfavorable conditions decrease heritability"

(Hoffmann and Merilä, 1999).

5 Conclusions

Significant quantitative trait variation among *L. chinensis* genotypes could provide a plausible explanation to contribute to positive niche complementarity effects of genotypic diversity on ecosystem function in a manner similar to species diversity. Significant G×E effects on 6 traits indicated that there were significantly different phenotypic adaptive responses among genotypes to different environmental conditions. The present results would improve future predictions about the potential impacts of climate change on *L. chinensis* and allow effective action to be taken for species conservation and ecosystem restoration.

Acknowledgements

This research was funded by the National Key Research and Development Program of China (2016YFC0500706), the National Natural Science Foundation of China (31570427, 31770505), and the China Scholarship Council (201606205032). We are grateful to Dr. Pella BRINKMAN and Dr. RUAN Weibin for helpful suggestions on improving the manuscript.

References

- Badyaev A V. 2005. Stress-induced variation in evolution: from behavioural plasticity to genetic assimilation. *Proceedings of the Royal Society B: Biological Sciences*, 272(1566): 877–886.
- Bai Y F, Han X G, Wu J G, et al. 2004. Ecosystem stability and compensatory effects in the Inner Mongolia grassland. *Nature*, 431(7005): 181–184.
- Bischoff A, Steinger T, Müller-Schärer H. 2010. The importance of plant provenance and genotypic diversity of seed material used for ecological restoration. *Restoration Ecology*, 18(3): 338–348.
- Bolnick D I, Amarasekare P, Araújo M S, et al. 2011. Why intraspecific trait variation matters in community ecology. *Trends in Ecology & Evolution*, 26(4): 183–192.
- Charmantier A, Garant D. 2005. Environmental quality and evolutionary potential: lessons from wild populations. *Proceedings of the Royal Society B: Biological Sciences*, 272(1571): 1415–1425.
- Cook-Patton S C, McArt S H, Parachnowitsch A L, et al. 2011. A direct comparison of the consequences of plant genotypic and species diversity on communities and ecosystem function. *Ecology*, 92(4): 915–923.
- Cornelissen J H C, Lavorel S, Garnier E, et al. 2003. A handbook of protocols for standardized and easy measurement of plant functional traits worldwide. *Australian Journal of Botany*, 51(4): 335–380.
- Crawford K M, Rudgers J A. 2013. Genetic diversity within a dominant plant outweighs plant species diversity in structuring an arthropod community. *Ecology*, 94(5): 1025–1035.
- Crutsinger G M, Strauss S Y, Rudgers J A. 2010. Genetic variation within a dominant shrub species determines plant species colonization in a coastal dune ecosystem. *Ecology*, 91(4): 1237–1243.
- Crutsinger G M. 2016. A community genetics perspective: opportunities for the coming decade. *New Phytologist*, 210(1): 65–70.
- Dia M, Wehner T C, Hassell R, et al. 2016. Genotype×environment interaction and stability analysis for watermelon fruit yield in the United States. *Crop Science*, 56(4): 1645–1661.
- Draghi J A, Whitlock M C. 2012. Phenotypic plasticity facilitates mutational variance, genetic variance, and evolvability along the major axis of environmental variation. *Evolution*, 66(9): 2891–2902.
- Espeland E K, Emery N C, Mercer K L, et al. 2017. Evolution of plant materials for ecological restoration: insights from the applied and basic literature. *Journal of Applied Ecology*, 54(1): 102–115.
- Ghalambor C K, McKay J K, Carroll S P, et al. 2007. Adaptive versus non-adaptive phenotypic plasticity and the potential for contemporary adaptation in new environments. *Functional Ecology*, 21(3): 394–407.
- Gustafson D J, Major C, Jones D, et al. 2014. Genetic sorting of subordinate species in grassland modulated by intraspecific variation in dominant species. *PloS ONE*, 9(3): e91511, doi: 10.1371/journal.pone.0091511.
- Hallsson L R, Björklund M. 2012. Selection in a fluctuating environment leads to decreased genetic variation and facilitates the evolution of phenotypic plasticity. *Journal of Evolutionary Biology*, 25(7): 1275–1290.
- Hoffmann A A, Merilä J. 1999. Heritable variation and evolution under favourable and unfavourable conditions. *Trends in Ecology*

- & Evolution, 14 (3): 96–101.
- Hughes A R, Inouye B D, Johnson M T, et al. 2008. Ecological consequences of genetic diversity. Ecology Letters, 11(6): 609–623.
- Kraft N J B, Crutsinger G M, Forrester E J, et al. 2014. Functional trait differences and the outcome of community assembly: an experimental test with vernal pool annual plants. Oikos, 123(11): 1391–1399.
- Liu Z P, Li X F, Li H J, et al. 2007. The genetic diversity of perennial *Leymus chinensis* originating from China. Grass and Forage Science, 62 (1): 27–34.
- Lynch M, Walsh B. 1998. Genetics and Analysis of Quantitative Traits. Sunderland: Sinauer Associates, Inc., 548–550.
- Manaa A, Ahmed H B, Valot B, et al. 2011. Salt and genotype impact on plant physiology and root proteome variations in tomato. Journal of Experimental Botany, 62(8): 2797–2813.
- Mittelbach G G, Osenberg C W, Wainwright P C. 1999. Variation in feeding morphology between pumpkinseed populations: Phenotypic plasticity or evolution? Evolutionary Ecology Research, 1(1): 111–128.
- Morris G P, Hu Z B, Grabowski P P, et al. 2016. Genotypic diversity effects on biomass production in native perennial bioenergy cropping systems. Global Change Biology Bioenergy, 8(5): 1000–1014.
- Nicotra A B, Atkin O K, Bonser S P, et al. 2010. Plant phenotypic plasticity in a changing climate. Trends in Plant Science, 15(12): 684–692.
- Pigliucci M. 2005. Evolution of phenotypic plasticity: where are we going now? Trends in Ecology & Evolution, 20(9): 481–486.
- Prieto I, Violle C, Barre P, et al. 2015. Complementary effects of species and genetic diversity on productivity and stability of sown grasslands. Nature Plants, 1(4): 15033.
- Qiu H, Huang S, Zhang Y. 1996. Flora Peipublicae Popularis Sinicae, Tomus 42(2). Beijing: Science Press, 133–147. (in Chinese)
- Salmela M J, Greenham K, Lou P, et al. 2016. Variation in circadian rhythms is maintained among and within populations in *Boechera stricta*. Plant, Cell & Environment, 39(6): 1293–1303.
- Shaw E J, Kakuda Y, Rajcan I. 2016. Effect of genotype, environment, and genotype×environment interaction on tocopherol accumulation in soybean seed. Crop Science, 56(1): 40–50.
- Shen J F, Ren H Q, Xin X J, et al. 2015. *Leymus chinensis* genotypic diversity increase the response of population to disturbance. Acta Ecologica Sinica, 35(23): 7682–7689. (in Chinese)
- Smith M D, Hoffman A M, Avolio M L. 2016. Gene expression patterns of two dominant tallgrass prairie species differ in response to warming and altered precipitation. Scientific Reports, 6: 25522.
- Treplin M, Pennings S C, Zimmer M. 2013. Decomposition of leaf litter in a U.S. saltmarsh is driven by dominant species, not species complementarity. Wetlands, 33(1): 83–89.
- Wang Y S, Zhao L M, Wang H, et al. 2005. Molecular genetic variation in a clonal plant population of *Leymus chinensis* (Trin.) Tzvel. Journal of Integrative Plant Biology, 47(9): 1055–1064.
- Wang Z W, Li L H, Han X G, et al. 2004. Do rhizome severing and shoot defoliation affect clonal growth of *Leymus chinensis* at ramet population level? Acta Oecologica, 26(3): 255–260.
- Xu S X, Shu Q Y, Liu G S. 2006. Genetic relationship in ecotypes of *Leymus chinensis* revealed by polymorphism of amplified DNA fragment lengths. Russian Journal of Plant Physiology, 53(5): 678–683.
- Xu Z Z, Zhou G S. 2006. Combined effects of water stress and high temperature on photosynthesis, nitrogen metabolism and lipid peroxidation of a perennial grass *Leymus chinensis*. Planta, 224(5): 1080–1090.
- Yang X, Shen J F, Zhao N X, et al. 2017. Phenotypic plasticity and genetic differentiation of quantitative traits in genotypes of *Leymus chinensis*. Chinese Journal of Plant Ecology, 41(3): 359–368. (in Chinese)