



Publisher Correction: Effect of partial and global shielding on surface-driven phenomena in keyhole mode laser beam welding

Leander Schmidt¹ · Klaus Schrickler¹ · Christian Diegel¹ · Florian Sachs¹ · Jean Pierre Bergmann¹ · Andrea Knauer² · Henry Romanus² · Herwig Requardt³ · Yunhui Chen^{3,4} · Alexander Rack³

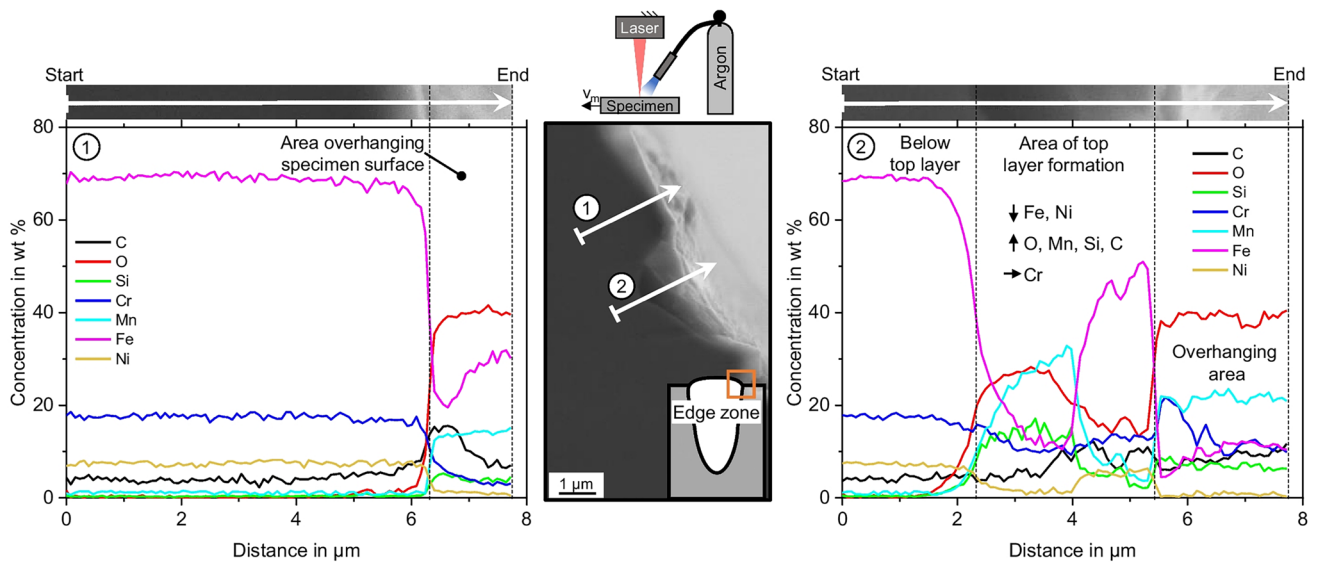
Published online: 18 December 2023
© The Author(s) 2023

Publisher Correction: Welding in the World

<https://doi.org/10.1007/s40194-023-01627-y>

The publication of this article unfortunately contained mistakes. The figures 10 and 12 were exchanged. The corrected figures are given below.

This is wrong:



The original article can be found online at <https://doi.org/10.1007/s40194-023-01627-y>.

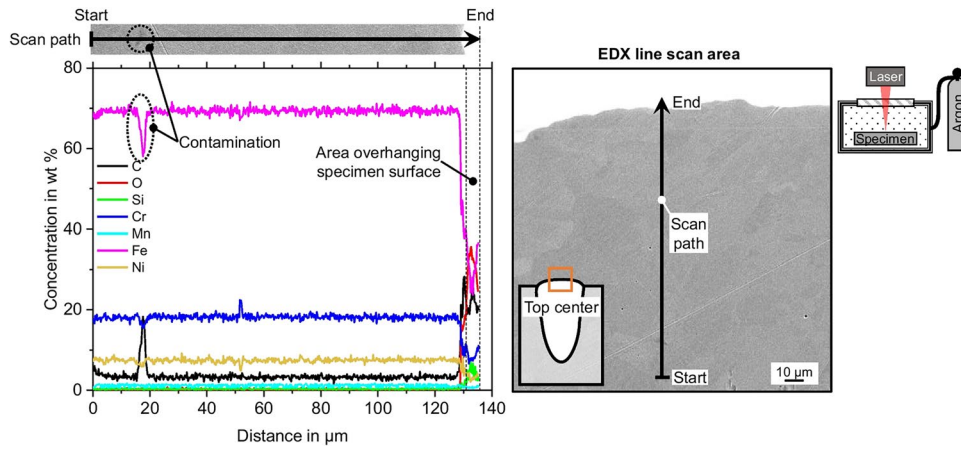
✉ Leander Schmidt
leander.schmidt@tu-ilmenau.de

¹ Production Technology Group, Technische Universität Ilmenau, Gustav-Kirchhoff-Platz 2, 98693 Ilmenau, Germany

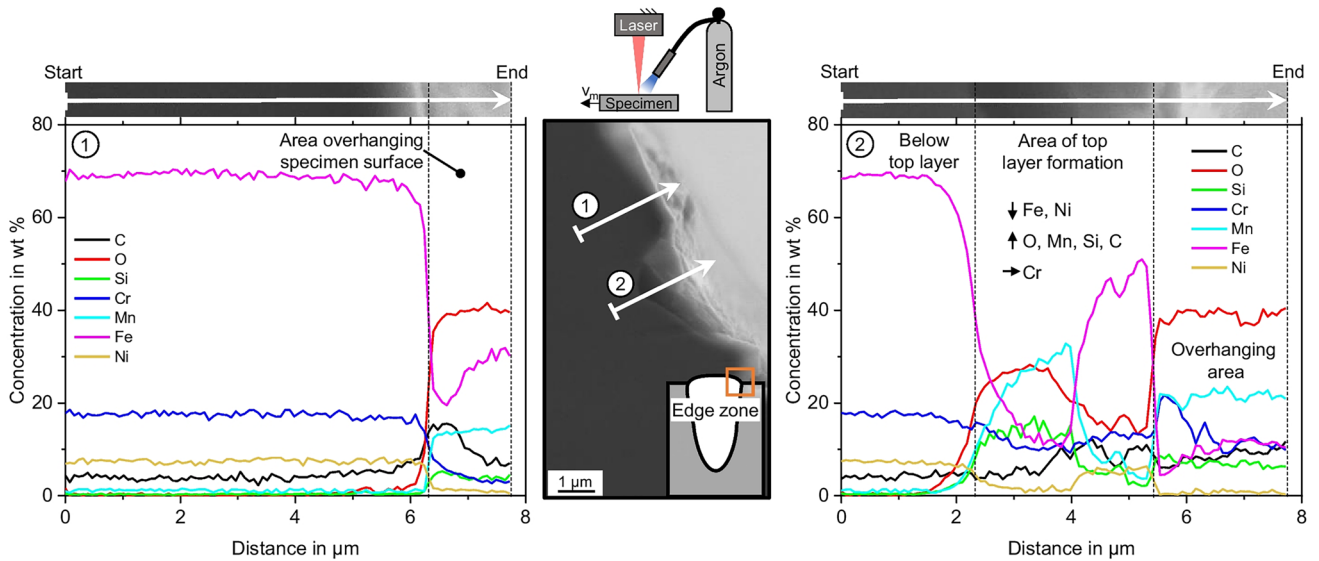
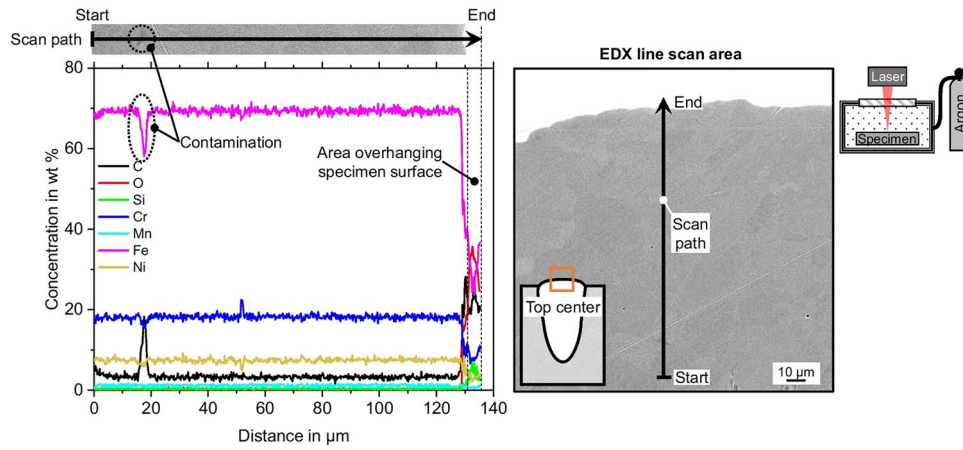
² Center of Micro- and Nanotechnologies (ZMN), Gustav-Kirchhoff-Straße 7, 98693 Ilmenau, Germany

³ ESRF – The European Synchrotron, Structure of Materials Group - ID19, 38043 Grenoble Cedex 9, France

⁴ School of Engineering, RMIT University, Melbourne, Australia



This is correct:



The original article has been corrected.

Open Access This article is licensed under a Creative Commons Attribution 4.0 International License, which permits use, sharing, adaptation, distribution and reproduction in any medium or format, as long as you give appropriate credit to the original author(s) and the source, provide a link to the Creative Commons licence, and indicate if changes were made. The images or other third party material in this article are included in the article's Creative Commons licence, unless indicated

otherwise in a credit line to the material. If material is not included in the article's Creative Commons licence and your intended use is not permitted by statutory regulation or exceeds the permitted use, you will need to obtain permission directly from the copyright holder. To view a copy of this licence, visit <http://creativecommons.org/licenses/by/4.0/>.

Publisher's Note Springer Nature remains neutral with regard to jurisdictional claims in published maps and institutional affiliations.