



Evaluation of neuroprotective effects of *Canna indica* L against aluminium chloride induced memory impairment in rats

Prachi S. Ojha¹ · Prakash R. Biradar¹ · Siddarth Tubachi¹ · Vishal S. Patil²

Received: 7 August 2021 / Accepted: 24 December 2021 / Published online: 7 January 2022
© The Author(s), under exclusive licence to Institute of Korean Medicine, Kyung Hee University 2022

Abstract

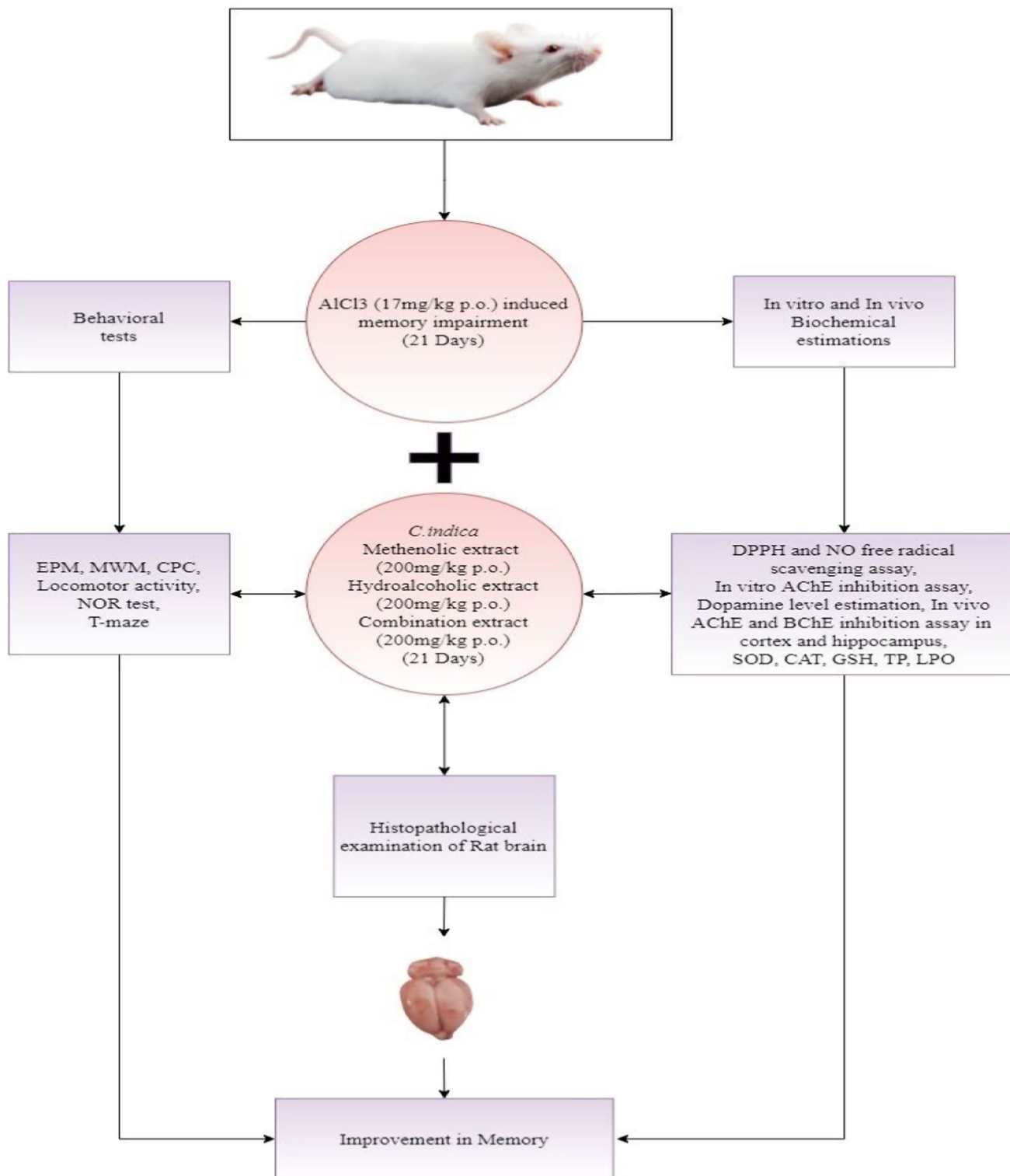
Memory disorders are the progressive neurological disorder, mainly causing dementia, memory loss and cognitive dysfunctions. The current study is aimed to experimentally validate the crude extract of *Canna indica* aerial parts (CIA) and root (CIR) against aluminium chloride induced altered memory in rats. Initially, methanolic extract of CIA, hydroalcoholic extract of CIR, and their combination of CIA + CIR were screened for *In vitro* antioxidant activity via 2,2-diphenyl-1-picrylhydrazyl (DPPH) and nitric oxide (NO) assays, acetylcholinesterase (AChE) inhibitory assay and were also screened for their memory enhancing activity by *in-vivo* models such as elevated plus maze (EPM), morris water maze (MWM), cooks pole climb (CPC), Actophotometer, novel object recognition (NOR), and T-maze. Aluminium chloride (AlCl₃) (17 mg/kg/day p.o.) for 21 days, was used as an Alzheimer's disease inducing agent and Donepezil (AChE inhibitor) as a standard treatment agent. The AChE, butyrylcholinesterase (BChE) activity and malondialdehyde (MDA) level were significantly increased, and glutathione (GSH), total protein (TP), catalase (CAT), and Dopamine were decreased only in AlCl₃ treated rats and treatment with CIA 200 mg/kg and CIA + CIR 200 mg/kg significantly reversed these mechanisms. Histopathology of cortex and hippocampus was examined at 40× magnification, indicating maintain of integrity and architecture of CA1 and CA3 neuronal cells compared to control and standard groups. The *in vivo* studies of interspective and exteroceptive behavior models (EPM), MWM, CPC, Actophotometer, NOR, T-maze revealed that AlCl₃ administration enhanced transfer latency (TL), escape latency time (ELT) and decreases locomotion, discriminatory index, and percentage alternation respectively. However, treatment with CIA and CIA + CIR 200 mg/kg highly significantly reversed the pathological changes of disease, extracts of *Canna indica* of both root and aerial parts phyto constituents are rich in flavonoids, phlobatannins, anthocyanin pigments, saponins, alkaloids, steroids, terpenoids etc. Which will decipher the acetylcholinesterase inhibitory, antioxidant and anti-inflammatory activity, will ameliorate the pathological state of Alzheimer disease.

✉ Prakash R. Biradar
prakashbiradar@klepharm.edu; prakashrb123@gmail.com

¹ Department of Pharmacology and Toxicology, KLE
College of Pharmacy, KLE Academy of Higher Education
and Research, Belagavi, Karnataka 590010, India

² ICMR- National Institute of Traditional Medicine, Belagavi,
Karnataka 590010, India

Graphical abstract



Keywords Aluminium chloride · Memory disorder · *Canna indica* L · Acetylcholinestrace · Dopamine · Donepzil

Abbreviations

AD	Alzheimer disease
AlCl ₃	Aluminum chloride
AChE	Acetylcholinesterase enzyme
BChE	Butyrylcholinesterase enzyme
ELT	Escape latency time
CIA + CIR200	<i>Canna indica</i> aerial + root part (200 mg/kg) Group
CIA200	<i>Canna indica</i> aerial part (200 mg/kg) Group
CIR200	<i>Canna indica</i> root part (200 mg/kg) Group
CPC	Cook's pole climbing
CAT	Catalase
EPM	Elevated plus maze
DPZ	Donepezil
GSH	Glutathione
IC ₅₀	Inhibition concentration
LPO	Lipid peroxidation
MDA	Malondialdehyde
LPO	Lipid peroxidation
MWM	Morris water maze
NOR	Novel object recognition
N	Number of groups
NC	Negative control
PC	Positive control
p.o.	Per. oral
TL	Transfer latency
SOD	Super oxide dismutase
STL	Step through latency
TP	Total protein
ROS	Reactive oxygen species

Introduction

Alzheimer disease (AD) is a devastating neurodegenerative syndrome (progressive memory decline) reflecting the dysfunction of cerebral nerve cells and abnormal neurotransmitter activities. Currently more than 55 million people live with dementia worldwide, and there are nearly 10 million new cases every year (WHO report 2021). India is going through a demographic shift, with the elderly population significantly increasing. In India, life expectancy has nearly doubled, from 36.98 years in 1950–1960 to 69.27 years in 2015–2020. In the twenty first century, understanding the complete etiology, pathogenesis, and ascertaining disease modifying agents/therapy against AD is one of the most important challenges. AD is biochemically characterized by the A β elevation, insoluble protein aggregates (neuritic senile plaques and neurofibrillary tangles) accumulation, central cholinergic and dopaminergic systems impairment, increased cerebral oxidative stress

etc., while it is clinically characterized by performance abnormality, behavior worsening, thought leishureliness etc. AD is associated with a heterogeneous cause due to the multiple gene mutations and accounted for complex multi- proteins and multi-pathways mechanisms. (Blennow et al. 2006; Korczyn and Vakhapova, 2007; Bachurin et al. 2017). The inducing compound Aluminium chloride causes the highly reactive oxygen species (ROS) leading the Neuroinflammation, A β and Tau protein degradation characterizing similar to AD pathogenesis (Prema et al. 2017).

To date, AD symptoms can be managed with two classes of drugs that are approved by the US-FDA, which includes (I) Cholinesterase (ChE) inhibitors (II) NMDA antagonists (Colović et al., 2013). However, these agents provide a partial improvement of memory and cognitive function and are associated with several side effects viz. bronchospasm, bradycardia, increased respiratory secretion, hypotension, decreased intraocular pressure, nausea and vomiting during long term therapy. Also, these agents lose effectiveness as the disease progresses (Ali et al. 2015).

Traditional medicinal plants have received valuable attention in the management of various ailments, India is considered as a Goldmine for medicinal plants and their traditional uses with less side effects and multiple target mechanism for the neurodegenerative diseases. WHO has recommended and encouraged the use of traditional herbs remedies during the COVID-19 pandemic, because of their therapeutic efficacy, safety and availability (Gautam et al. 2020).

Canna indica, a member of the “Cannaceae” family and “Canna” genus. Traditionally, rhizomes are used for gonorrhoea, dropsy, febrifuge, dyspepsia, and as an antipyretic through decoction, and roots were utilized against amenorrhoea (Kanase and Vishwakarma 2018). The leaves were utilized for malaria, rheumatic pain, and arthritis and possess Haemostatic effect (Lin et al 2011). The flowers were used for eye diseases and their decoction for external wound healing. Numerous pharmacological experiments demonstrated its therapeutics against inflammation, diabetes, viral diseases, immune related disorders, brain disorders including its effect on Acetylcholinesterase enzyme. (Chigurupati et al. 2021; Talluri et al. 2018) *Canna indica* whole plant extracts exhibited potential radical scavenging, anti-inflammatory and were reported to possess neuroprotective activity (Chigurupati et al. 2021). *Canna indicia* enriched with flavonoids, phlobatannins, anthocyanin pigments, tannins, saponins, cardiac glycosides, alkaloids, steroids, terpenoids, etc. bioactive molecules (Oladotun et al 2019).

However, there is a paucity of scientific reports on *Canna indica* L., constituent's molecular mechanisms in the treatment of AD. Herein, we designed this study to explore the possible mechanisms of *Canna indica* aerial part and root extract in AlCl₃ induced memory impairment by utilizing

In vivo studies by interspective and exteroceptive behavior models as well *In vitro* biochemical estimations.

Materials used in the current study

Chemicals

Aluminium chloride (AlCl₃) (Sigma, USA), Donepezil (DPZ) (Cipla, Goa), Acetylthiocholine iodide (Sigma, USA), Butyrylthiocholine iodide (Sigma, USA), 2,2-diphenyl-1-picrylhydrazyl (DPPH) Dopamine, DTNB (Sigma, USA) and other analytical graded chemicals.

Plant material

The aerial parts and root of *Canna indica* L. gathered from Sujoy and Aditya Nursery, Chicalim, Goa, India and authenticated by the plant taxonomist from ICMR-NITM, Belagavi. Accession number: RMRC -1584. The collected plant specimen was stored as an herbarium for future reference. The fresh plant material was washed properly using running water and to remove dust particles and shade dried at room temperature. The dried plant material was further crushed into coarse powder using a grinder and exposed to the extraction method.

Extraction

1. The aerial part dried coarse powder 1 kg were subjected to the maceration technique using Solvent: methanol (95%) as a solvent
2. The dried root parts coarse powder 1 kg was subjected to the maceration technique using Hydroalcohol (Water:Ethanol 3:7).

Both the mixtures were kept for 7 days with random shaking. After 7 days, the solvent is filtered out and concentrated under reduced pressure at 45–55 °C using a rotary evaporator. The obtained extract was sticky, which were further air-dried, collected in an amber color glass container, and stored in the refrigerator.

The marc was used for Soxhlet extraction with the respective solvents i.e. aerial marc (methanol-75%), Root part (ethanol-70%). Phytoconstituents screening tests were carried out using standard protocols.

Flavonoid and phenolic content

Total flavonoid content of methanolic extract of aerial part and hydroalcoholic extract of root part of *Canna indica* was performed as explained by Zhishen et al. (1999) with equivalent to Rutin Similarly, Total phenolic content of both the

extracts were performed as mentioned by Baba et al (2014) with equivalent to gallic acid and IC50 value is expressed

In-vitro antioxidant activity

The DPPH free radical scavenging assay of the methanolic extract of the aerial part and hydroalcoholic extract of root part of *Canna indica* was performed as explained by Tharun and Kumar (2013) and Noreen et al. (2017). Similarly, the nitrous oxide free radical scavenging assay for both the extracts was carried out as illustrated by Boora et al. (2014). Ascorbic acid was used as a standard. Appropriate controls were taken for standard and test compounds and IC50 value was calculated.

In-vitro acetylcholinesterase activity

Methanolic extract of the aerial part and hydroalcoholic extract of the root part of *Canna indica* was evaluated for acetylcholinesterase inhibitory activity by using Ellman's method (Dhanasekaran et al. 2015). The concentration range from 10 to 320 µg/mL for extract and 1 to 32 µg/mL for Donepezil was tested. 1.7 mL (pH 8.0) and 250 µL different concentrations of extract and Donepezil was prepared. To the above mixture, 10 µL of 6.67 U mL⁻¹ AChE enzyme and 20 µL of DTNB was added. The mixture was incubated for 15 min, after incubation added 10µL of Acetylthiocholine iodide, and the absorbance was read at 412 nm every 45 s for 3 min. The percentage inhibition was calculated from the change in Abs w.r.t. change in time.

$$\% \text{Inhibition} = 100 - \frac{\text{SampleAbs}}{\text{BlankAbs}} \times 100$$

IC50 was calculated between the inhibition percentage v/s extraction concentration.

Experimental animals

To evaluate the memory enhancing capacity of the *Canna indica*, male Wistar rats having 250–300 g weight of 8 weeks old rats were used. All the animals were housed in a hygienic and translucent polypropylene cage. Further animals were randomized and made into six groups (N=6 and n=6) N=Number of groups and n=Number of animals in each group. All the animals were kept under 12/12 h natural light–dark cycle [27 °C temp. and 45–55%RH]. The overall research procedure was revised and approved by the IAEC, KLE College of Pharmacy, Belagavi. Resolution No-KLECO/CPCSEA- Reg.No.221/Po/Re/S/2000/CPCSEA, Res. No 29–03/09/2020.

Experimental study design

Male Wistar rats were divided into 6 groups (Study Design) LD50 of *Canna indica* was reported to be 2000 mg/kg for 28 days with no mortality. Thus, an intermediate dose of 200 mg/kg was chosen from 1/10th of the LD50 for the experiment. Control group animals received normal food and water throughout the experiment. Negative Control (NC) group received AlCl₃ (17 mg/kg/day p.o.) for 21 days. Positive Control (PC) group received AlCl₃ (17 mg/kg/day p.o.) along with Donepezil (DPZ) (3 mg/kg p.o.) for 21 days. CIA200, CIR200, and CIA + CIR 200 group received AlCl₃ (17 mg/kg/day p.o.) along with extracts for 21 days. Before initiating the study, acquisition trials were carried out for all the animals using Elevated plus maze (EPM), Morris water maze (MWM), Cook's pole climb (CPC), T-maze, novel object recognition (NOR), and Actophotometer. After subjecting to the test agent, changes in the Latency were examined on 0th (first dose) 7th, 14th and 21st day. After completion of the *in-vivo* studies, rats were euthanized, brains were isolated and cerebral cortex, hippocampus AChE and BChE enzyme level and whole brain Dopamine, lipid peroxidation (LPO), reduced glutathione GSH, malondialdehyde (MDA), total protein (TP), superoxide dismutase (SOD) and catalase (CAT) level were measured.

Study Design In vivo study plan, N=6 (N—No. of groups) and n=6 (n—No. of animals in each groups)

Groups (N)	Treatment (n)
Control	Received normal food and water
Negative Control (NC)	Received AlCl ₃ (17 mg/kg p.o.)—21 days
Positive Control (PC)	AlCl ₃ (17 mg/kg p.o.) + Donepezil HCl. (3 mg/kg p.o.)—21 days
<i>Canna indica</i> Aerial Mentah-nolic extract (CIA) 200	AlCl ₃ (17 mg/kg p.o.) + CIA extract (200 mg/kg p.o.)—21 days
<i>Canna indica</i> Root hydroalcoholic extract (CIR) 200	AlCl ₃ (17 mg/kg p.o.) + CIR extract (200 mg/kg p.o.)—21 days
<i>Canna indica</i> CIA + CIR 200	AlCl ₃ (17 mg/kg p.o.) + CIA + CIR extract (200 mg/kg p.o.)—21 days

In-vivo screening model for memory: Morris water maze (MWM) test

MWM is a big round water tank “diameter: 110 cm and height: 60 cm” consisting of a white surface and that is filled using opaque water (Temp. 26 ± 2 °C) to a distance (depth) of 30 cm. The MWM tank circle is divided into 4

equal quadrants [North Quadrant 1, East Quadrant 2, West Quadrant 3, and South Quadrant 4]. Further, it consists of a 10 cm diameter platform in a constant position. The ELT of the individual rat was noted at the 60 s cut-off time (Ishola et al. 2018; Biradar et al. 2020).

Index of memory improvement- Escape Latency Time (ELT).

Elevated plus maze (EPM) test

EPM contains of 2 closed and 2 open arms (four arms; equal dimensions of 50 × 10 cm). These 4 arms connect at central with a 10 × 10 cm square gap as an initial point. The transfer latency (TL) was recorded via stopwatch by keeping rats independently toward one side of the open arm. The EPM TL cut-off was set to 60 s throughout the study. In EPM, when the rat does not enter the closed arm, such rat was directed back into one of the closed arms, and 60 s TL was given. (Bhuvanendran et al. 2018 and Biradar et al. 2020).

Index of memory improvement -A drop of transfer Latency(TL) by test drug.

Locomotor activity by actophotometer test

The individual rat locomotion was assessed via actophotometer at a cut-off time of 5 min. The system consists of a photocell connected to the circuit with a counter. The beam of light passing on the photocell is cut off by the moving animal, then a count is recorded. On the 0th, 7th, 14th, and 21st day, individual group readings were noted. Before initiating the experiment, 10% ethanol was used to wipe the chamber for avoiding the animal odour. (Goverdhan et al. 2012).

Index of memory improvement -Increase in locomotor activity neuromuscular coordination and spatial learning by test drug.

Cook's pole climbing (CPC) test

The escape latency/conditional avoidance of each rat during learning and its retention was screened by CPC. The ground part consists in grid rods that acted as a shock stimulus. First, individual rats were trained and readings were noted acquisition, the retention trail was noted 0th, 7th, 14th, and 21st day. The cut-off time of 120 s was considered for evaluation (Goverdhan et al. 2012).

Index of memory improvement - Exterceptive punishment based valence memory and strength of the neuromuscular activity of the treated drug.

Novel object recognition (NOR) test

This test is utilized to assess short- and long-term memory. The test includes both acquisition and retention trials.

During the acquisition trial two identical objects (green balls) were placed equidistant from each other. Further, for 60 s animals were placed in the arm and then placed back in the cage. The process was repeated for all the animals for 7 days (training period). During this trial after a period of 30 min, to avoid the bias for a particular location of identical and novel objects, interchanged the objects from left to right. After training, the same methodology was performed for the retention trial after a period of 30 min. Here, one green ball (identical object) is replaced with the red ball (novel object), and the time is taken to explore an object was noted (Antunes et al 2012)

Object exploration recording includes:

- Animal head to orient towards the object within a distance of 2 cm.
- Animal to sniffing, touching, and licking the object with the paws.

Discrimination index (DI in %) was calculated by using $DI (\%) = (A1 - A2)/(A1 + A2)$ and $DI (\%) = (A1 - B)/(A1 + B)$ formula.

1. Time spent with familiar object 1 (A1)
2. Time spent with the familiar object 2 (A2)
3. Time spent with the novel object (B)

Index of memory improvement: assessment of working memory of the treated drug.

T-maze test

The test involves both acquisition and retention sessions. Initially, animals were trained for 7 consecutive days. After that, on the 0th day (Treatment period) food was placed in one side arm (left arm we selected) before beginning the experiment. The overnight fasted animal is placed in the start box for 60 s. Then, a slow sliding door was opened noted the number of entries in the left arm (right choices). Similarly, the tests were repeated on day 12th and 21st day.

% Alternation was calculated by dividing the number of entries into the left arm in the acquisition and during the treatment period (Wenk et al. 1998).

Index of memory improvement: Assessment of reward based memory of the treated drug.

Biochemical estimation

AChE and BChE level in the cerebral cortex and hippocampus

At the end of the study, the rats were decapitated, their brains removed quickly and kept in ice cold saline. Cortex and hippocampus were isolated and placed in an ice-cold water container to stop the enzymatic reactions. Ellman's method 1961 was followed to estimate AChE and BChE level in the cortex and hippocampus regions of the brain. For this, approximately 100 mg of the isolated sections was weighed and homogenated in Phosphate buffer [0.1 M; pH 8.0]. To 0.4 mL above mixture (homogenate) was added, (1) 2.6 mL 0.1 M (pH 8) Phosphate buffer (2) 100 μ L of 10 mM 5,5-dithio-bis-(2-nitrobenzoic acid (DTNB) and mixed well. Further, 20 μ L of Acetylthiocholine iodide (AChI) (0.075 M) was added to the above mixture. The Abs was then noted at 412 nm for 5 min "The rate of moles of substrate hydrolyzed/min/g of tissue is calculated by"

$$R = 5.74 \times 10^{-4}(\Delta A/Co)$$

where R Rate, in moles of substrate hydrolyzed per min per gram of tissue. ΔA change in Abs per min, Co Conc. of tissue (mg/mL).

Determination of MDA level in LPO

To the 0.2 mL of tissue homogenate was taken. 0.2 mL of SLS (8.1% w/v) was added followed by 1.5 mL of 20% CH₃COOH and 1.5 mL TBA (0.8%). The above mixture was vortexed for 1 min and diluted up to 4 mL using DM water. Further, it was boiled at 90°C for 1 h using the water bath. The whole mixture was cooled and 1 mL of DM water was added followed by 5 mL mixture of "pyridine:n-butanol" (1:15 v/v). Lastly, the mixture was centrifuged at 4000 rpm for 10 min. The Abs of the organic layer was read at 532 nm. (Ohkawa et al. 1979; Ramakrishnan et al. 2015).

Cerebrum malondialdehyde (MDA) mg⁻¹ of LPO level was estimated and expressed in nanomoles using the formula,

MDA = nmoles of MDA/mg of LPO (P) in the cerebrum is

$$C = A \times (V/E) \times P$$

where A = Abs at 535 nm, V = Volume of mixture, E = Extinction coefficient.

Determination of reduced γ -L-Glutamyl-L-cysteinyl-glycine (GSH)

Ellman GL 1959 method was utilized to estimate whole-brain reduced GSH level. To 0.25 mL of tissue homogenate, 2.5 mL sodium phosphate buffer was added followed by 50 μ L (5,5-dithio-bis-(2-nitrobenzoic acid) DTNB [pH 7.0]. The mixture was then vortexed the above mixture and incubated at 25–27°C for 2 min. Within 15 min, at 412 nm, Abs of the mixture was read and expressed γ -L-Glutamyl-L-cysteinyl-glycine (GSH) level in μ moles/mg of tissue.

$$Co = A \times DN$$

where Co is the original concentration A is Ab at 412 nm, N is molar extinction coefficient i.e. 13,600/M/cm. Dilution factor (D).

Determination of SOD

The capacity of SOD to antagonize the auto-oxidation of epinephrine to adrenochrome in the presence of alkaline pH. To the 25 μ L of homogenate sample, added 0.1 mM of epinephrine in carbonate buffer (pH 10.2). At 295 nm, the adrenochrome formation in the above mixture was measured using the ELISA platereader. Further, the SOD level was determined from the total protein value and expressed in U/mg of protein (Misra et al. 1972).

Determination of total protein

Taken, 2.25 mL of 0.5M NaOH was added to 0.25 mL of tissue homogenate. Then, 0.5 mL was pipetted out from the above mixture and 0.5 mL of 10% TCA was added followed by centrifugation at 3000 rpm for 10 min at 4 °C. After, this the supernatant was discarded and the remaining precipitate was dissolved in 0.5 mL of 0.5 M NaOH and 2 mL of Alkaline mixture. Further, after waiting for 10 min 0.25 mL of Folin Ciocâlteu reagent was added followed by another span of 10 min after which absorbance was read at 540 nm (Sedlak et al. 1968).

Determination of catalase

50 μ L of tissue homogenate was mixed with 1.95 mL of PBS 7.0 pH and 1 mL of 0.7 mM H₂O₂ solution. The absorbance was read at 240 nm. (Claiborne et al. 1985).

Determination of dopamine level

The level of dopamine in the whole brain was estimated via UV–Visible spectroscopy. First, the standard linear curve of

dopamine was derived via serial dilution of standard dopamine (50 to 500 ng/mL). The detect in range of dopamine was set to 240–280 nm and the linear curve was obtained for Conc. v/s Abs. The supernatant obtained from each test group was diluted 10 times and the absorbance was read at 278 nm to detect the dopamine. Using the $y = mx + c$ obtained equation from the linear curve and the sample absorbance, the whole brain dopamine level was estimated and expressed in ng/g of tissue (Khale et al. 2018).

Histopathology examination

Animals were euthanized at the end of the study, and the brain was isolated and placed in 10% formalin. Haematoxylin and eosin were used to stained the cortex and hippocampus slides. An electroscopic microscope with a magnification of 10 \times and 40 \times was used to examine the lesions.

Statistical analysis

The results were presented as Mean, Standard Error of the Mean (SEM) and SD. One-way and two-way ANOVA were used to determine the difference between the groups, followed by Bonferroni and Tukey's comparison tests, utilizing GraphPad Prism 6.0. The difference between the groups was considered significant and probability level at the degree of freedom at 0.05 *, **, ***, **** indicates $p < 0.05$, 0.01, 0.001, 0.0001 compared. Treatment group with Control group respectively & #, ##, ###, #### indicates $p < 0.05$, 0.01, 0.001, 0.0001 compared to Negative control with Treatment group respectively.

Results

Plant extraction and phytochemical screening

The extract obtained from the aerial and root part is 64 g and 73 g respectively. The percentage yield (w/w) of *Canna indica* L. aerial part methanolic and root hydroalcoholic extract was found to be 6.4 and 7.4% respectively. The preliminary phytochemical screening of the aerial and root parts of *Canna indica* revealed the presence of carbohydrates, proteins, amino acids, alkaloids, flavonoids, terpenoids, steroids, polyphenols, tannins and cardiac glycosides.

Total flavonoid and phenolic content

The total flavonoid content of the methanolic extract of aerial part and hydroalcoholic extract of the root part of *Canna indica* was found to be 58.58 rutin equivalent/g of dry extract weight and 55.25 mg rutin equivalent/g of dry extract weight, rutin respectively. Similarly, the total

phenolic content of the hydroalcoholic extract of aerial part and hydroalcoholic extract of the root part of *Canna indica* was found to be 15 mg gallic acid equivalent/g of dry extract weight and 8.83 mg gallic acid equivalent/g of dry extract weight.

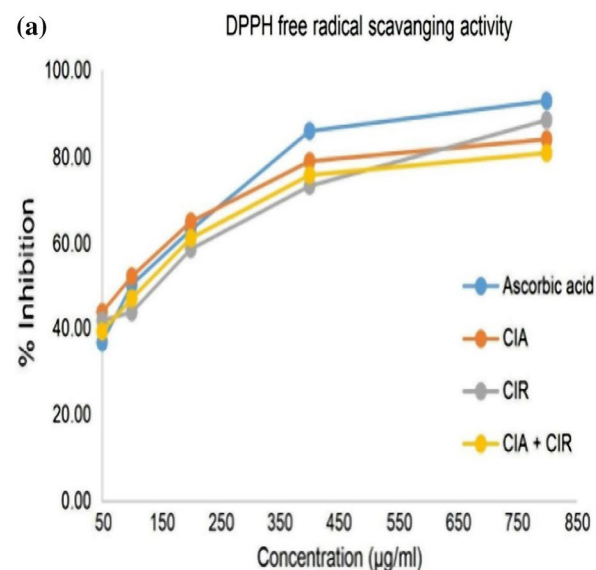
In-vitro antioxidant assay

DPPH free radical scavenging assay

The IC₅₀ of Ascorbic acid was found to be 84.8153 µg/mL and the IC₅₀ of *Canna indica* aerial part methanolic extract, root hydroalcoholic extract, and in combination was found to be 15.793, 130.589, 102.92 µg/mL respectively. The DPPH radical scavenging activity of *Canna indica* aerial part methanolic extract was found to be more potent compared to root alone and in a combination of aerial and root parts. The % inhibition and IC₅₀ value are shown in Fig. 1a.

NO free radical scavenging assay

The IC₅₀ of Ascorbic acid was found to be 133.20 µg/mL and the IC₅₀ of *Canna indica* aerial part methanolic extract, root hydroalcoholic extract, and in combination was found to be 120.99, 397.77, 298.87 µg/mL respectively. The NO radical scavenging activity of *Canna indica* aerial part methanolic extract was found to be more potent compared to root alone and in a combination of aerial and root parts. The % inhibition and IC₅₀ value are shown in Fig. 1b.



In-vitro AChE inhibitory activity

The IC₅₀ of Donepezil was found to be 10.23 µg/mL and the IC₅₀ of *Canna indica* aerial part methanolic extract and root hydroalcoholic extract was found to be 142.397 µg/mL and 214.666 µg/mL respectively. The AChE Inhibitory Activity of *Canna indica* aerial part methanolic extract was found to be more potent compared to root alone. The % inhibition and IC₅₀ value are shown Fig. 2 and supplementary Table 1.

In-vivo studies

Elevated Plus maze (EPM): Effect of *Canna indica* on Transfer latency (TL)

The retrieval of memory “TL” from EPM was determined. A decline in the TL indicates the retrieval of memory. On the 0th day of the first treatment, the TL was found to be

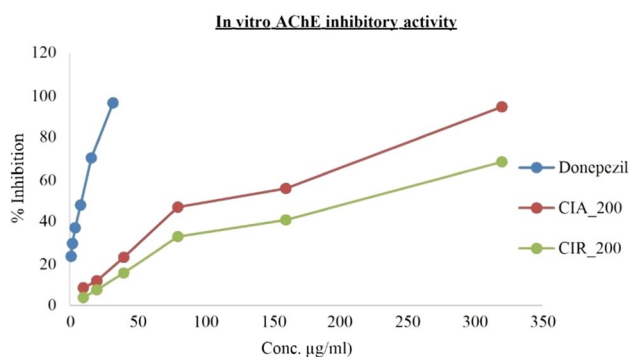


Fig. 2 Effect of *Canna indica* on AChE inhibition

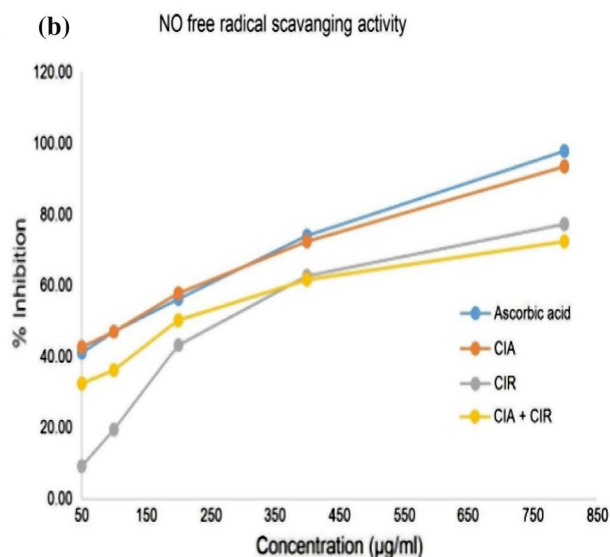


Fig. 1 Effect of *Canna indica* on a) DPPH free radical scavenging activity b) NO free radical scavenging activity

similar to that of Acquisition trial readings. However, on the 7th day a significant increase in transfer latency (TL) was observed in the Negative control group (NC) compared to the control group $***p < 0.001$, whereas, treatment with Donepezil (PC) and CIA 200 showed a significant decline in the TL but no significant difference was observed in CIR 200 and CIA + CIR 200 group compared to NC group. Further, on the 14th day and 21st day, a significant rise in TL was observed in the NC group compared to the control group $***p < 0.001$, whereas the treatment groups saw a decline in the TL as compared to NC group. Among the three treatment groups, CIA 200 and CIA + CIR 200 groups were found to be most effective as compared to NC and Donepezil group $###p < 0.001$. The effect of CIA, CIR, and CIA + CIR on TL is shown in Fig. 3a and supplementary Table 2.

Morris water maze: effect of *Canna indica* on escape latency (ELT)

Throughout the acquisition trial and on the 0th day no significant difference was observed, among the groups. However, on the 7th day, the Negative control group (NC) exhibited a rise in the Escape latency time (ELT) $***p < 0.001$, whereas, treatment with CIA 200 and CIA + CIR 200 showed a decline in the ELT $##p < 0.01$, however, no significant difference in ELT was observed in the Donepezil and CIR200 group compared to NC group $##p < 0.01$. Further, on the 14th day and 21st days a remarkable rise in ELT was

observed in the NC group $****p < 0.0001$ compared to the control group, whereas, all the treatment groups exhibited a decline in ELT as compared to NC group $####p < 0.0001$. The effect of CIA, CIR, and CIA + CIR on ELT is shown in Fig. 3b and supplementary table 3.

Actophotometer: effect of *Canna indica* on locomotion activity

Percentage change in locomotion was assessed by the actophotometer. On the 0th day and 7th day, no significant change in locomotion was observed among all the groups. However, on 14th and 21st day, a significant change in locomotion was observed in the NC group compared to the control group (-1.57 ± 0.309) $****p < 0.0001$. The treatment of Donepezil, CIA200 (0.762 ± 0.767) $####p < 0.0001$, CIR 200, and CIA + CIR 200 (0.721 ± 0.583) $####p < 0.0001$ reversed the decreased locomotion caused by $AlCl_3$. The percentage change in locomotion is illustrated in Fig. 3c and supplementary Table 4.

CPC: effect of *Canna indica* on escape latency time (ELT)

During acquisition and 0th day, no significant difference in Escape latency time (ELT) was observed between the groups NC (16.33 ± 1.75) $***p < 0.001$ compared to CIR200 (15.67 ± 1.63). However, on the 7th, 14th and

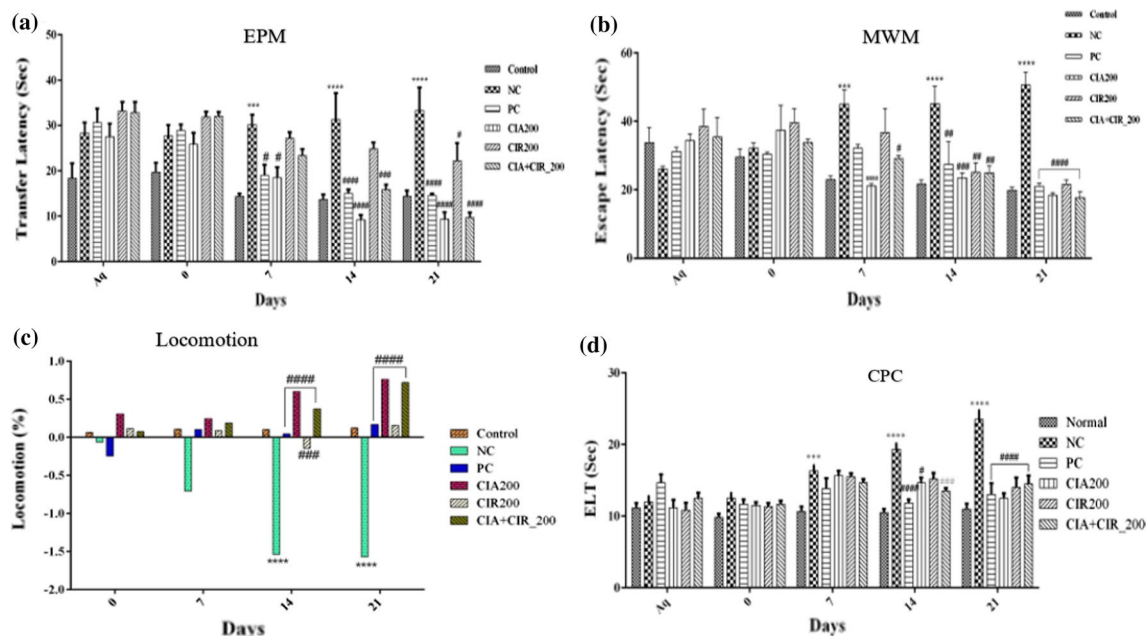


Fig. 3 Effect of *Canna indica* on **a** TL using EPM, **b** ELT using MWM, **c** % change in locomotion using Actophotometer, **d** ELT using CPC. * $p < 0.05$, ** $p < 0.01$, *** $p < 0.001$, and **** $p < 0.0001$ is

compared to Control group; # $p < 0.05$, ## $p < 0.01$, ### $p < 0.001$, and **** $p < 0.0001$ is compared to $AlCl_3$ induced AD group

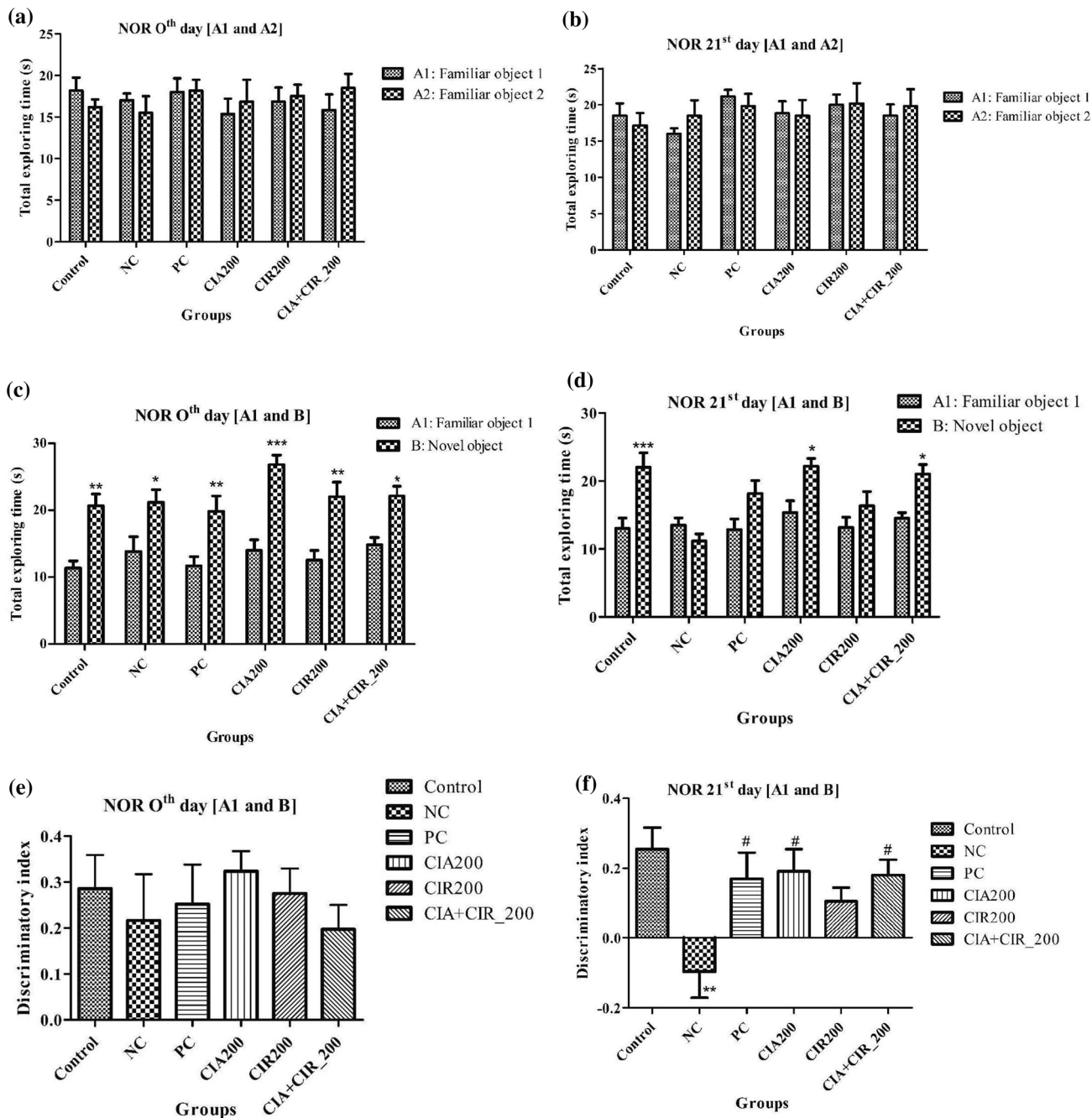


Fig. 4 Effect of *Canna indica* on novel object recognition **a** A1–A2 on 0th day **b** A1–A2 on 21st day, **c** A1–B on 0th day, **d** A1–B on 21st day, **e** DI of A1–B on 0th day, and **f** DI of A1–B on 21st day. * $p < 0.05$,

** $p < 0.01$, *** $p < 0.001$, and **** $p < 0.0001$ is compared to Control group; # $p < 0.05$, ## $p < 0.01$ ### $p < 0.001$, and **** $p < 0.0001$ is compared to $AlCl_3$ induced AD group

21st days a significant increase in the ELT was seen in the NC group (23.5 ± 3.02)**** $p < 0.0001$ as compared to the control group (11 ± 1.79), while treatment with Donepezil, CIA200 (12.5 ± 1.64)#### $p < 0.0001$ and CIA + CIR 200 decreased the ELT (14.5 ± 2.88)#### $p < 0.0001$, When compared to the NC group (23.5 ± 3.02)**** $p < 0.0001$. The effect of *Canna indica*

on ELT in CPC is illustrated in Fig. 3c and supplementary Table 5.

NOR: effect of *Canna indica* on discriminatory index

The effect of *Canna indica* on memory was evaluated via NOR by discrimination index for both A1–A2 and A1–B1

(Supplementary table 6 and Fig. 4). On the 0th and 21st day, no significant difference was observed among all the groups for time spent with A1–A2 i.e., there was no significant difference in the time spent by the rats with the two familiar objects. However, on the 0th day, All the groups showed remarkable increase in time spent with B object compared to A object i.e., the time spent by the rats with the novel object (red box) was considerably higher than the time spent with the familiar object (green ball) suggestive of good retention of memory and natural exploratory behavior of the rats towards the novel object.

Similarly, on the 21st day, a significant increase in novel object recognition (time spent with object B) was observed in control, CIA 200 and CIA + CIR compared to A1 object ($###p < 0.01$). Whereas, NC, PC, CIR 200 groups animals didn't show a significant increase in novel object recognition behavior. As for the discriminatory index, there was no significant difference in the DI among all the groups on the 0th day. On the other hand, a remarkable decline in DI was seen in the NC compared to the Control whereas PC, CIA 200, and CIA + CIR 200 group saw a remarkable rise in the DI.

T-maze

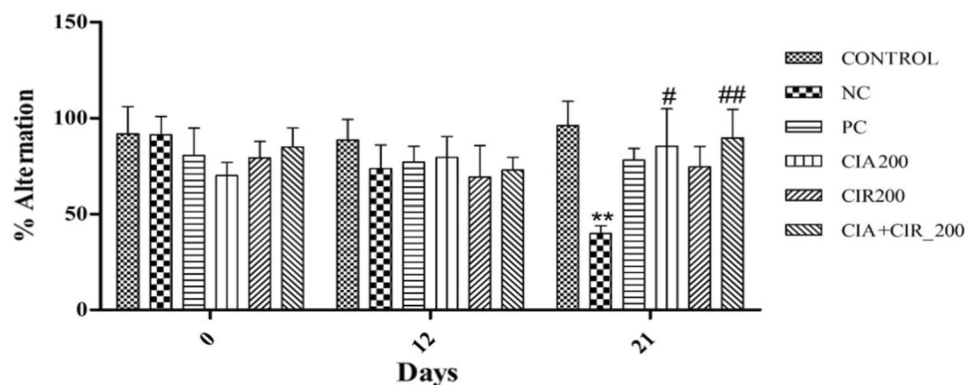
The effect of *Canna indica* on % Alternation was screened via T-maze. During 0th and 12th day, no significant difference in % Alternation is observed between the groups. However, on 21st day, a remarkable decline in % Alternation in the NC group was seen compared to the control group while % Alternation in the CIA 200 and CIA + CIR 200 group was remarkably raised when compared to the NC group ($###p < 0.01$). The effect of *Canna indica* on % Alternation in T-maze is illustrated in Fig. 5 and Table 7.

In-vivo biochemical estimations

Acetylcholinesterase level [Hippocampus and Cerebral Cortex]:

(A) *Canna indica* effect on AChE level.

Fig. 5 Effect of *Canna indica* on percentage alternation using T-Maze. * $p < 0.05$, ** $p < 0.01$, *** $p < 0.001$, and **** $p < 0.0001$ is compared to Normal group; # $p < 0.05$, ## $p < 0.01$ ### $p < 0.001$, and **** $p < 0.0001$ is compared to $AlCl_3$ induced AD group



The treatment of $AlCl_3$ in the NC group remarkably increased the level of AChE in the cortex and hippocampus compared to the control group (4.66 ± 0.65). However, treatment with Donepezil, CIA200, CIR200, and CIA + CIR 200 significantly decreased the level of AChE in the cortex ($###p < 0.001$) and hippocampus ($p < 0.001$ ***) compared to the NC group. All three treatment groups of *Canna indica* exhibited a potent inhibitory effect on AChE. The effect of *Canna indica* on AChE enzyme level in the cerebral cortex and hippocampus is shown in supplementary table 8 and Fig. 6a, b respectively.

(B) *Canna indica* effect on BChE level.

The treatment of $AlCl_3$ significantly increased the level of BChE in the cortex and hippocampus in the NC group as compared to the control group. However, treatment with Donepezil didn't show a significant effect on BChE level in both cortex and hippocampus compared to the NC group while treatment with CIA 200, CIR 200, and CIA + CIR 200 (0.284 ± 0.153) #### $p < 0.0001$ significantly decreased the level of BChE in the cortex when compared to the NC group (1.07 ± 0.11)**** $p < 0.0001$. On the other hand, only CIA 200 and CIA + CIR 200 (0.326 ± 0.095) #### $p < 0.0001$ significantly decreased the level of BChE in the hippocampus and CIR200 didn't show any effect as compared to the NC group (0.936 ± 0.079 **** $p < 0.0001$). Among three treatment groups of *Canna indica*, CIA 200 and CIA + CIR 200 exhibited a potent inhibitory effect on BChE. The effect of *Canna indica* on BChE enzyme level in the cerebral cortex and hippocampus is shown in supplementary table 9 and Fig. 6c, d respectively.

Canna indica effect on reduced GSH

Treatment with $AlCl_3$ in the NC group remarkably reduced GSH level in the whole brain compared to the control group. However, treatment with Donepezil, CIA 200, and CIA + CIR 200 ($###p < 0.001$) significantly increased the

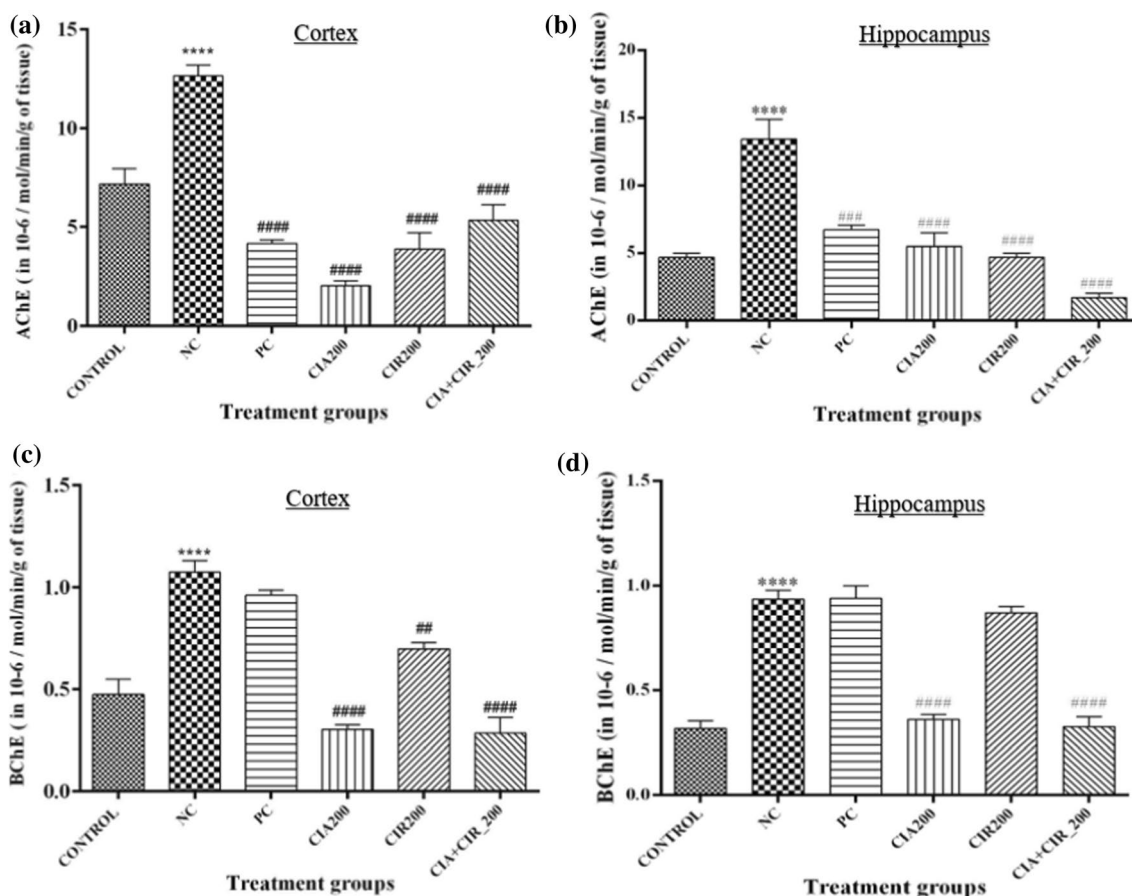


Fig. 6 Effect of *Canna indica* on brain AChE and BChE level. **a** AChE in cortex, **b** AChE in Hippocampus, **c** BChE in cortex, and **d** BChE in Hippocampus. * $p < 0.05$, ** $p < 0.01$, *** $p < 0.001$, and

**** $p < 0.0001$ is compared to Normal group; # $p < 0.05$, ## $p < 0.01$ ### $p < 0.001$, and **** $p < 0.0001$ is compared to $AlCl_3$ induced AD group

level of GSH compared to the NC group (** $p < 0.001$). Further, no significant change in GSH level is observed in the CIR200 group compared to the NC group. The effect of *Canna indica* on whole brain GSH level is shown in supplementary Table 10 and Fig. 7a.

***Canna indica* effect on malondialdehyde (MDA) level**

Treatment with $AlCl_3$ in the NC group remarkably raised MDA level in the whole brain compared to the control group. However, treatment with Donepezil, CIA200, and CIA + CIR 200 (### $p < 0.001$) remarkably decreased the level of MDA compared to the NC group (** $p < 0.001$). Further, no significant change in MDA level is observed in the CIR200 group compared to the NC group. The effect of *Canna indica* on whole-brain MDA level is shown in supplementary table 10 and Fig. 7b.

***Canna indica* effect on total protein (TP)**

The treatment with $AlCl_3$ in the NC group didn't show a significant change in TP level but showed a slight increase in TP level in the whole brain compared to normal. However, treatment with Donepezil showed, not significant but decrease in the TP level compared to the NC. Further, CIA + CIR 200 and CIR200 didn't show a change in TP level, however, CIA 200 showed not significant but a slight decrease in TP level compared to the NC group. The effect of *Canna indica* on whole brain TP level is shown in supplementary table 10 and Fig. 7c respectively.

***Canna indica* effect on superoxide dismutase (SOD)**

The treatment with $AlCl_3$ in the NC group decreased the SOD level in the whole cerebrum compared to normal but data was found statistically non-significant. Also, Donepezil, CIA 200, CIR 200, and CIA + CIR 200 treatment didn't show any significant change in SOD level compared to the

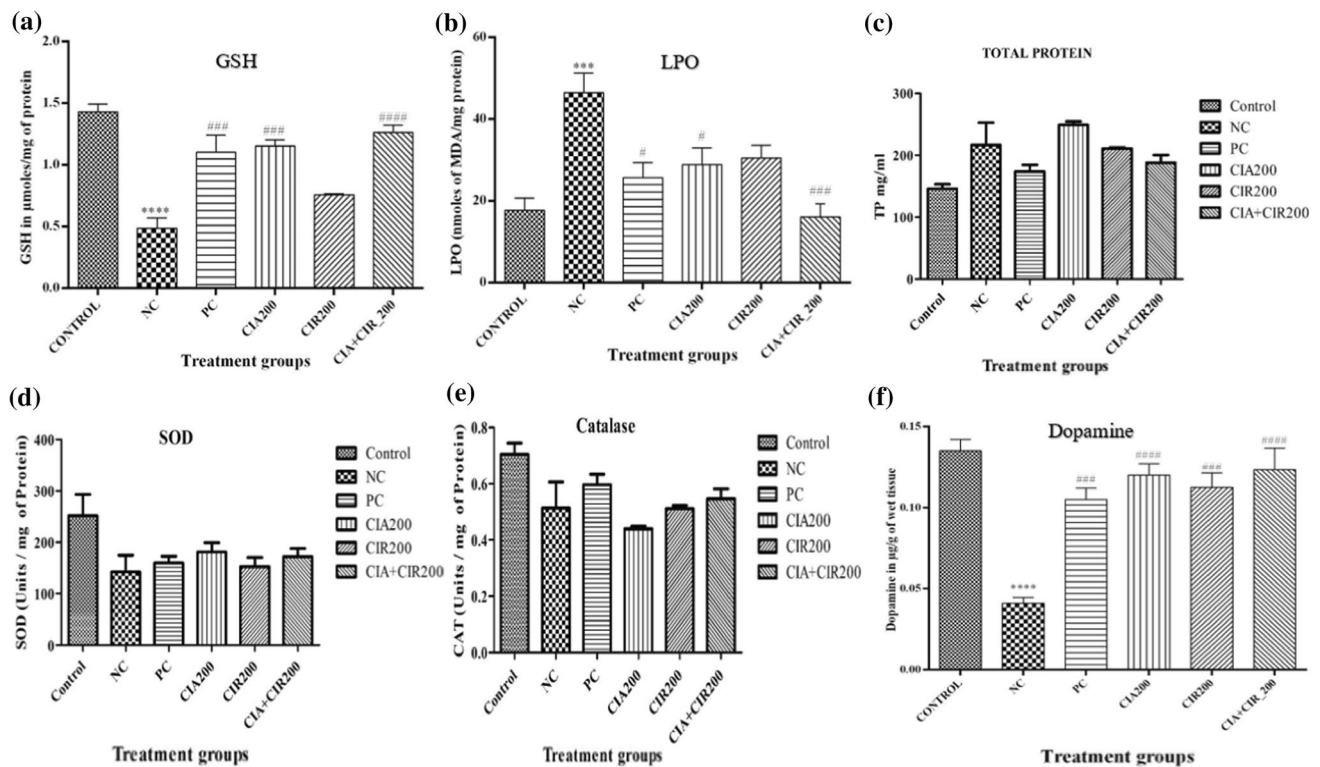


Fig. 7 Effect of *C. indica* on whole brain antioxidant markers and dopamine level. **a** GSH, **b** LPO, **c** TP, **d** SOD, **e** CAT, and **f** Dopamine level. * $p < 0.05$, ** $p < 0.01$, *** $p < 0.001$, and **** $p < 0.0001$ is

compared to Normal group; # $p < 0.05$, ## $p < 0.01$, ### $p < 0.001$, and **** $p < 0.0001$ is compared to $AlCl_3$ induced AD group

NC group. The effect of *Canna indica* on whole brain SOD level is shown in supplementary Table 10 and Fig. 7d.

Canna indica effect on catalase CAT

Treatment with $AlCl_3$ in the NC group didn't show a significant change in CAT level but showed a decrease in CAT level in the whole cerebrum. Also, Donepezil treatment showed slight increase in the CAT level but didn't show any significant change compared to the negative control. Further, CIA 200 and CIR 200 didn't show CAT activity, however, combination therapy CIA + CIR 200 showed not significant but a slight increase in CAT level compared to the NC group. The effect of *Canna indica* on whole brain CAT level is shown in supplementary Table 10 and Fig. 7e.

Canna indica effect on dopamine level

Treatment with $AlCl_3$ in the NC group remarkably decreased Dopamine level in the whole cerebrum compared to the control group. However, treatment with Donepezil, CIA 200, CIR 200 and CIA + CIR 200 (0.123 ± 0.026) #### $p < 0.0001$ remarkably increased the level of Dopamine as compared to the NC group (0.04 ± 0.007 ****). The effect of

Canna indica on whole brain Dopamine level is shown in supplementary Table 11 and Fig. 7f.

Effect of *Canna indica* on whole-brain histopathology

The histology of the control group cerebrum indicated mild cerebral oedema, cerebral congestion, neuronal eosinophilia, meningeal congestion, and no change was observed in RBC extravasation, macrophage influx, neuronal micro vacuolization, neuronal nuclear pyknosis, neutrophilic infiltration, neuronal karyorrhexis, reactive gliosis and vascular proliferation. However, the NC group histogram indicated severe damage in the above mentioned parameters (+++ to +). The PC and CIA and CIA + CIR groups reversed the $AlCl_3$ induced damage. The histopathology of the brain (cortex and hippocampus) at $10\times$ and $40\times$ magnification is shown in Figs. 8 and Fig. 9 respectively and Table 12 (Table 1).

Discussion

The neuroprotective and memory enhancing mechanism of action of *Canna indica* has been shown in this study via *in vitro* and *in vivo*. Firstly, using the interceptive

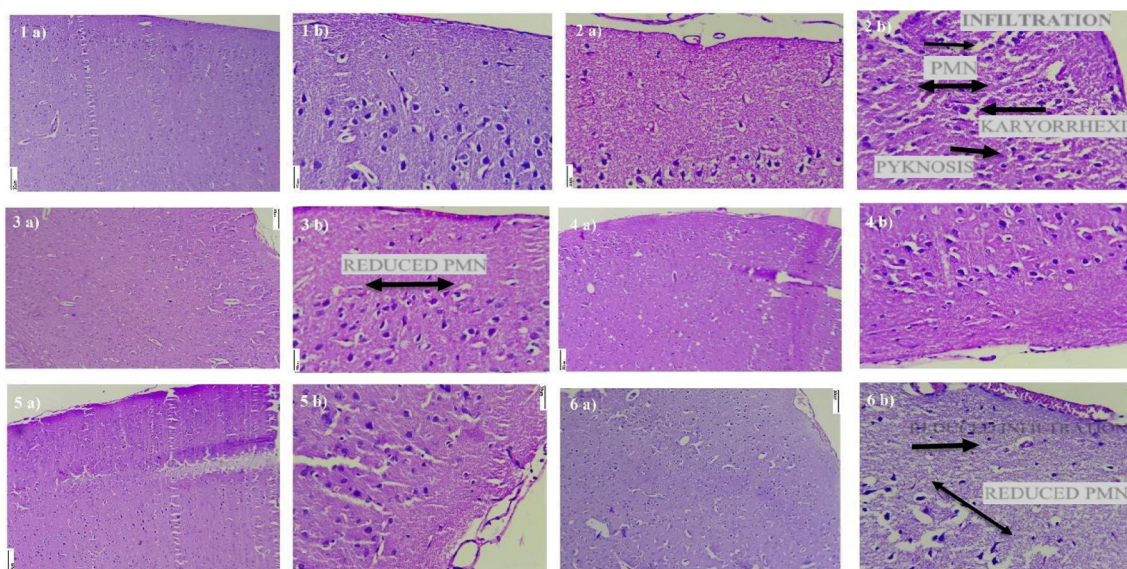


Fig. 8 Effect of *C. indica* on cortex. **a** $\times 10$ **b** $\times 40$. 1) Control 2) NC 3) PC 4) CIA200, 5) CIR200, 6) CIA + CIR 200

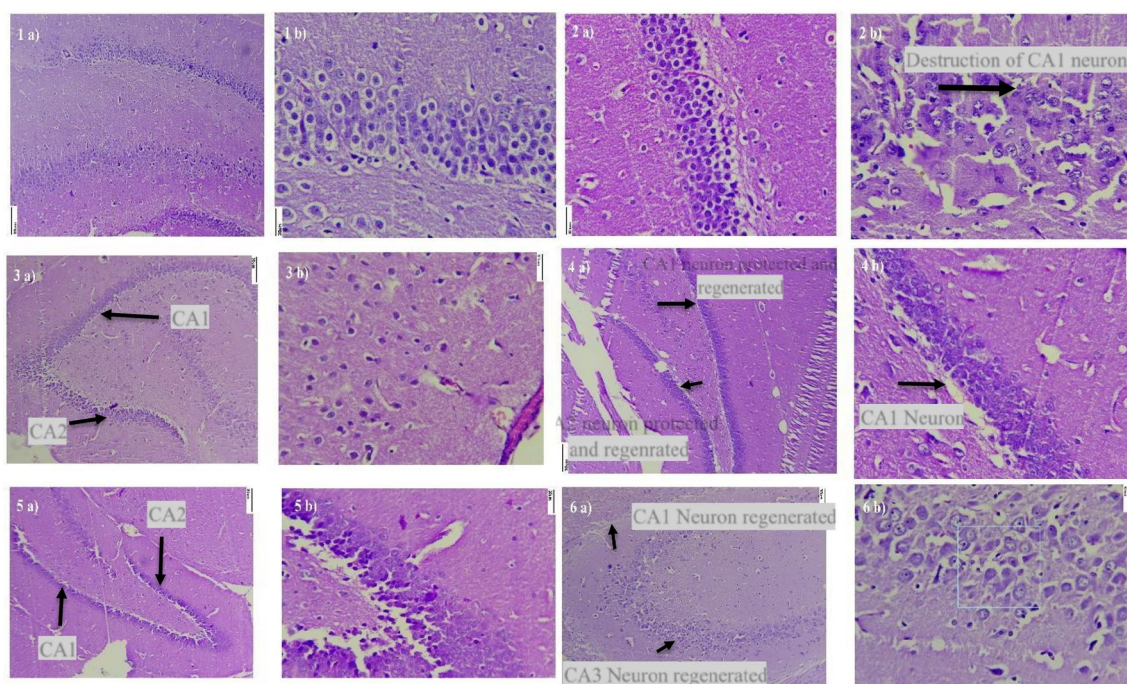


Fig. 9 Effect of *C. indica* on hippocampus. **a** $\times 10$ **b** $\times 40$. 1) Control 2) NC 3) PC 4) CIA200 5) CIR2006) CIA + CIR 200

and exteceptive models like MWM, EPM, Actophotometer, CPC, NOR, and T-Maze, analyzing the biochemical (AChE, BChE, GSH, MDA, TP, SOD, CAT, Dopamine) level from the cerebrum, the memory restoring function of *Canna indica* against AlCl_3 mediated memory dysfunction in rats was investigated. The MWM was used to assess spatial memory. Administration of AlCl_3 significantly raises the ELT and treatment with Donepezil and *Canna indica*

[A+R] indicated a critical decline in ELT. EPM was used to determine the transfer latency (TL). The TL was significantly increased in the AlCl_3 treated rats. However, prolonged Donepezil and *Canna indica* [A+R] treatment for 21 days lead to a remarkable reduction in TL. The change in body movement was observed by measuring locomotor activity through actophotometer. Administration of AlCl_3 significantly decreased locomotory activity in rats and

Table 1 Histopathological investigation of rat cortex and hippocampus

Microscopy	Control	NC	PC	CIA200	CIR200	CIA + CIR200
Congestion	-ve	*	*	*	**	*
Oedema	*	***	-ve	*	-ve	*
Neuronal Microvacuolisation	*	***	*	**	-ve	*
Meningeal Congestion	-ve	*	-ve	-ve	*	-ve
Neuronal Eosinophilia	*	-ve	-ve	*	**	-ve
Neuronal Nuclear Pyknosis	-ve	*	-ve	-ve	-ve	-ve
Neuronal Karyorrhexis	-ve	*	-ve	-ve	-ve	-ve
Neutrophilic Infiltration	-ve	*	-ve	-ve	-ve	-ve
RBC Extravasation	-ve	*	-ve	-ve	-ve	-ve
Macrophage Influx	-ve	-ve	-ve	-ve	-ve	-ve
Vascular Proliferation	-ve	*	-ve	-ve	-ve	-ve
Reactive Gliosis	-ve	**	-ve	-ve	*	-ve

- VE Nil, * Mild, ** Moderate, *** Severe

treatment with Donepezil and *Canna indica* reversed this mechanism. Further, CPC was used to investigate cognitive function, primarily a response to conditioned stimuli during learning and memory. AD induced using AlCl₃ exhibited a noteworthy rise in ELT on day 21st and treatment with *Canna indica* [A+R] and Donepezil successfully reversed this change. Further, to analyze the recognition memory and the ability to discriminate between two discrete objects, the NOR apparatus was used. Treatment with AlCl₃ exhibited a significant decline in the discriminatory index on day 21st while treatment with *Canna indica* [A and A+R] and Donepezil remarkably raised the discriminatory index. Finally, the exploratory behavior as well as the working memory of the rats was analyzed by using the T-maze apparatus. Treatment with AlCl₃ exhibited a remarkable decline in % alternation on day 21st and treatment with *Canna indica* [A+R] significantly raised the % alternation. These findings suggest that *Canna indica* memory improving function protects against AlCl₃ Induced memory loss.

Cholinesterase's function, GSH, MDA, TP, SOD, CAT, and Dopamine level in the cerebrum were examined. The level of ACh and BCh chemicals associated with memory improvement, is diminished in AD because of fast hydrolysis by AChE and BChE action respectively. In the present study, the *In vitro* results suggest that CIA and CIR possess an AChE inhibitory potency. Similarly, chronic administration of CIA and CIR in rats exhibited a remarkable reduction in the AChE and BChE activity in both cortex and hippocampus, which suggests that *Canna indica* [A and R] both possess AChE and BChE inhibitory activity in a dose dependent manner. This may be due to the presence of various phytoconstituents in the plant such as flavonoids, terpenes, sesquiterpenes and sterols.

During physiological and pathological processes, free radicals and reactive oxygen species (ROS) are generated ROS are important in phagocytosis, enzyme activation, and cell cycle control, among other cell signaling pathways. (Manoharan et al. 2016) An imbalance in free radical and reactive oxygen species (ROS) formation weakest the antioxidant defense system, resulting in cell damage and inflammation. O₃, H₂O₂, and NO₂ are the primary free radicals involved in oxidative stress and the development of AD. Further, more the generation (production) of ROS causes a variety of undesirable effects, including DNA harm, lipid peroxidation, and protein mutilation. It is well-known that "plant extracts with higher flavonoid and phenolic content have the highest DPPH scavenging and nitric oxide scavenging activity" (Manoharan et al. 2016). In the present study, in vitro antioxidant assays showed that *Canna indica* to possess DPPH and NO radical scavenging activity. Further, administration of CIA and CIR showed remarkable change in the antioxidant level in the whole brain viz., GSH, MDA, TP, and CAT level. The antioxidant effect of

Canna indica may be due to the abundant presence of flavonoids and triterpenoids in the plant. Further, Dopamine a neurotransmitter present in the VTA, is involved in reward motivated actions and aids in the regulation of expression and the formation of new memories. In the present study investigation, AlCl_3 administration significantly decreased the level of Dopamine, and treatment with Donepezil and *Canna indica* reversed the above changes in dopamine level. Lastly, the histopathology examination of the brain of the normal animals revealed no significant changes, while the histopathology of the cerebrum in animals treated with AlCl_3 revealed significant changes viz., cerebral oedema, cerebral congestion, neuronal eosinophilia, meningeal congestion etc. Also, it was found that CA1 neurons and CA3 neurons (subdivision of CA1 neurons) which are majorly implicated in the formation and retrieval of hippocampal dependent memories were significantly disrupted. (Bartsch et al. 2011) Treatment with Donepezil and *Canna indica* on the other hand, resulted in normal histopathology of the cerebrum, indicating that Donepezil and *Canna indica* reversed the harm caused by AlCl_3 .

Conclusion

In this study, *In vivo* and *In vitro* experiments were employed to decode the intramolecular interaction of *Canna indica* memory enhancement activity. Chronic *Canna indica* therapy improves memory damage caused by AlCl_3 by restoring cholinergic system activity, regulating antioxidant pathways, and increasing dopamine levels. The study utilized MWM, EPM, CPC, Actophotometer, NOR, and T-Maze to demonstrate the memory functions modulated by both AlCl_3 and *Canna indica*. It can be said that the study results are comparable with the clinically approved molecule Donepezil. However, the current study is only limited to preclinical and which further validation using other AD models and gene expression level studies are needed to be carryout to explore the *Canna indica* pharmacotherapy in Alzheimer disease.

Supplementary Information The online version contains supplementary material available at <https://doi.org/10.1007/s13596-021-00627-x>.

Acknowledgements The authors thanks to Prof. Dr. S.S. Jalapure Principal, and Dr. N.A. Khatib, HOD of department of Pharmacology and Toxicology, KLE college of Pharmacy, Belagavi for providing necessary facilities to conduct the work. Authors thanks to Cipla, Verna, Goa for providing Donepezil HCl as a gift sample.

Author's contribution Prakash R. Biradar helped Conceptualization the study design, critical review and analysis of the manuscript and supervised the experiments. Prachi Ojha designed the study, conducted the experiments, and drafted the manuscript. Siddarth Tubachi, Vishal Patil assisted in data analysis and manuscript.

Funding None.

Declarations

Ethical statement The study protocol was reviewed and approved by the Institutional Animal Ethics Committee, KLE College of Pharmacy, Belagavi, and Resolution No. KLECOP/CPCSEA- Reg.No.221/Po/Re/S/2000/CPCSEA, Res. No 29-03/09/2020. The animal experiments were carried out in accordance with the CPCSEA guidelines.

Conflict of interest Prachi S. Ojha has no conflict of interest. Prakash R. Biradar has no conflict of interest. Siddarth Tubachi has no conflict of interest. Vishal S. Patil has no conflict of interest.

References

- Alan MP (2002) (2002) Pharmacotherapy for Alzheimer's disease: progress and prospects. *Trends Pharmacol Sci* 23(9):426–433
- Ali TB, Schleret TR, Reilly BM, Chen WY, Abagyan R (2015) Adverse effects of cholinesterase inhibitors in dementia, according to the pharmacovigilance data bases of the United-States and Canada. *PLoS ONE* 10(12):1–10
- Alistair B, Jane BE, Konrad M (2002) Alzheimer's disease. *Lancet* 360:163–165
- Ann EP, Vazdarjanova A (2003) McLaugh JL Muscarinic cholinergic influences in memory consolidation. *Neurobiol Learn Memory* 80:178–193
- Antunes M, Biala G (2012) The novel object recognition memory: neurobiology, test procedure, and its modifications. *Cogn Process* 13(2):93–110. <https://doi.org/10.1007/s10339-011-0430-z>
- Baba SA, Malik SA (2014) Evaluation of antioxidant and antibacterial activity of methanolic extracts of *Gentiana kurrooroyale*. *Saudi J Biol Sci* 21:493–498. <https://doi.org/10.1016/j.sjbs.2014.06.004>
- Bachurin SO, Bovina EV, Ustyugov AA (2017) Drugs in clinical trials for Alzheimer's disease: the major trends. *Med Res Rev* 5:1186–1225
- Bartsch T, Dohring J, Rohr A, Jansen O (2011) Deuschl G (2011) CA1 neurons in the human hippocampus are critical for autobiographical memory, mental time travel, and auto-noetic consciousness. *Proc Natl Acad Sci* 108(42):17562–17567
- Bhuvanendran S, Kumari Y, Othman I (2018) Amelioration of cognitive deficit by Embelin in a Scopolamine-induced Alzheimer's disease-like condition in a rat model. *Front Pharmacol* 9(6):1–12
- Biradar P, Patil V, Joshi H, Khanal P, Mallapur S (2020) Experimental validation and network pharmacology evaluation to decipher the mechanism of action of *Erythrina variegata* L. bark against scopolamine-induced memory impairment in rats. *Adv Tradit Med* 26:1–4
- Blennow K, De LMJ, Zetterberg H (2006) Alzheimer's Dis 368:387–403
- Boora F, Chirisa E, Mukanganyama S (2014) Evaluation of nitrite radical scavenging properties of selected Zimbabwean plant extracts and their phytoconstituents. *J Food Process* 2014:1–7
- Cacabelos R, Alvarez A, Lombardi V (2000) Pharmacological treatment of Alzheimer disease: from psychotropic drugs and cholinesterase inhibitors to pharmacogenomics. *Drug Today (barc)* 36(7):415–499
- Chandra V, Ganguli M, Pandav R, Johnston J, Belle S, Dekosky ST (1998) Prevalence of Alzheimer's disease and other demands in rural India. *Neurology* 51:1000–1008

- Chigurupati S, Alharbi NA, Sharma AK, Alhowail A, Vardharajula VR, Vijayabalan S, Das S, Kauser F, Amin E (2021) Pharmacological and pharmacognostical valuation of *Canna indica* leaves extract by quantifying safety profile and neuroprotective potential. *Saudi Journal of Biological Sciences*. 2021 Jun 1
- Claiborne A (1985) Catalase activity. In: Greenwald RA (ed) *CRC hand book of methods for oxygen radical research*. CRC Press, Boca Raton, Florida, USA, pp 283–284
- Colović MB, Krstić DZ, Lazarević-Pašti TD, Bondžić AM, Vasić VM (2013) Acetylcholinesterase inhibitors: pharmacology and toxicology. *Curr Neuropharmacol* 11(3):315–335
- Cummings J, Lee G, Mortsdorf T, Ritter A, Zhong K (2017) Alzheimer's disease drug development pipeline: 2017. *Alzheimer's Dement Transl Res Clin Interv* 3(3):367–384
- Deutsch JA (1971) The cholinergic synapse and the site of memory. *Science* 174:788–794
- Dhanasekaran S, Perumal P, Palayan M (2015) In-vitro Screening for acetylcholinesterase enzyme inhibition potential and antioxidant activity of extracts of *Ipomoea aquatica* Forsk: therapeutic lead for Alzheimer's disease. *J Appl Pharm Sci* 5:12–126
- Du X, Wang X, Geng M (2018) Alzheimer's disease hypothesis and related therapies. *Translational Neurodegeneration* 7(2):1–7
- Ellman GL (1959) Tissue sulfhydryl groups. *Arch Biochem Biophys* 82(1):70–77
- Ellman GL, Courtney KD, Andres V, Featherstone RM (1961) A new and rapid colorimetric determination of acetylcholinesterase activity. *Biochem Pharmacol* 7(2):88–95
- Ezio G (2000) Cholinesterase inhibitors stabilize Alzheimer's disease. *Neurochem Res* 25(9/10):1185–1190
- Ferreira-Vieira TH, Guimaraes IM, Silva FR, Ribeiro FM (2016) Alzheimer's disease: Targeting the Cholinergic System. *Curr Neuropharmacol* 14(1):101–115
- Gautam S, Gautam A, Chhetri S, Bhattarai U (2020) Immunity Against COVID-19: Potential Role of AyushKwath. *J Ayurveda Integr Med*
- Gianni B, Antonio M (1998) Is there a rational effort the use of acetylcholinesterase inhibitors in the therapy of Alzheimer's disease. *Euro J Pharmacol* 346:1–13
- Goverdhan P, Sravanthi A, Mamatha T (2012) Neuroprotective effects of meloxicam and selegiline in scopolamine-induced cognitive impairment and oxidative stress. *Int J Alzheimer's Dis*
- Hippus H, Neundörfer G (2003) The discovery of Alzheimer's disease. *Dialogues Clin Neurosci* 5(1):101–108
- Ishola IO, Ikuomola BO, Adeyemi OO (2018) Protective role of *Spondiasmombin* leaf and *Cola acuminata* seed extracts against scopolamine- induced cognitive dysfunction. *Alexandria J Med* 54(1):27–39
- Kanase V, Vishwakarma S (2018) Treatment of various diseases by *Canna indica* L. promising herb. *Asian J Pharm Clin Res* 11(12):51–56
- Kasture S (2003) Pharmacotherapy of Alzheimer's disease. *Proceedings of the AICTE sponsored national seminar; 2003 Aug 22–23; Guru Jambheshwar University (Haryana)* 31–41
- Khale AS, Kolhe SU, Temburne SV (2018) Neuropharmacological evaluation of *Sesbania sesban* using experimental animals. *World J Pharm Res* 7(12):698–717
- Korczyń AD, Vakhapova V (2007) The prevention of the dementia epidemic. *J Neurol Sci* 257:2–4
- Kosasa T, Kuriya Y, Matsui K, Yamanishi Y (2000) Inhibitory effect of orally administered donepezil hydrochloride (E2020), an over treatment for Alzheimer's disease, on cholinesterase activity in rats 389:173–179
- Lin FR, Ferrucci L, Metter EJ, An Y, Zonderman AB, Resnick SM (2011) Hearing loss and cognition in the Baltimore longitudinal study of aging. *Neuropsychology* 25(6):763
- Mahdi O, Baharudin MT, Nor NH, Chiroma SM, Jagadeesan S, Moklas MA (2019) Chemicals used for the induction of Alzheimer's disease-like cognitive dysfunctions in rodents. *Biomed Res Ther* 6(11):3460–3484
- Manoharan S, Guillemin GJ, Abiramasundari RS, Essa MM, Akbar M, Akbar MD (2016) The role of reactive oxygen species in the pathogenesis of Alzheimer's disease, Parkinson's disease, and Huntington's Disease: a mini review. *Oxid Med Cell Longev* 2016:1–15
- Margaret ME (2001) Is an effective immune intervention for Alzheimer's disease in prospect? *Trends Pharmacol Sci* 22(1):2–3
- Mayo clinic Alzheimer's: drugs help manage symptoms. <https://www.mayoclinic.org/diseasesconditions/alzheimersdisease/indepth/alzheimers/art-20048103>. Assessed on 05 Dec 2021
- Misra HP, Fridovich I (1972) The role of superoxide anion in the auto-oxidation of epinephrine and a simple assay for superoxide dismutase. *J Biol Chem* 247:3170–3175
- Nigel HG, Tada U (2001) Qian-Sheng Y A new therapeutic target in Alzheimer's disease treatment: attention to butyrylcholinesterase. *Curr Med Res Opin* 17(3):159–165
- Noreen H, Semmar N, Farman M, Mccullagh JSO (2017) Measurement of total phenolic content and antioxidant activity of aerial parts of medicinal plant *Coronopus didymus*. *Asian Pac J Trop Med*
- Ogura H, Kosasa T, Araki S (2000) Yamanishi Y Pharmacological-properties of donepezil hydrochloride (Aricept) a drug for Alzheimer's disease. *Nihon Yakurigaku Zasshi* 115(1):45–51
- Ohkawa H, Ohishi N, Yagi K (1979) Assay for Lipid Peroxides in Animal Tissues by Thiobarbituric Acid Reaction 358:351–358
- Oladotun PB, Akinsiku AA, Adeyemi AO et al (2019) Qualitative analysis, total phenolic content, FT-IR and GC-MS characterisation of *Canna indica*: bio reducing agent for nanoparticles synthesis. *J Phys: Conf Ser* 1299:012135
- Palle S, Neerati P (2017) Quercetin nanoparticles attenuates scopolamine induced spatial memory deficits and pathological damages in rats. *Bull Fac Pharmacy, Cairo Univ* 55(1):101–106
- Parihar MS, Hemnani T (2004) Alzheimer's disease pathogenesis and therapeutic interventions. *J Clin Neurosci* 11(5):456–467
- Paul EG (2003) Acetylcholine modulation of neural systems involved in learning and memory. *Neurobiol Learn Memory* 80:194–210
- Prema A, Justin Thenmozhi A, Manivasagam T, Mohamed Essa M, Guillemin GJ (2017) Fenugreek seed powder attenuated aluminum chloride-induced tau pathology, oxidative stress, and inflammation in a rat model of Alzheimer's disease. *J Alzheimers Dis* 60(s1):S209–S220
- Ramakrishnan P, Chandrasekhar T, Muralidharan P. (2015) Cognitive enhancing, antiacetylcholinesterase, and antioxidant properties of *Tagetes patula* on scopolamine induced amnesia in mice. *Int J Green Pharm* 167–174.
- Raymond T, Bartus, Reginald L (1982) The cholinergic hypothesis of geriatric memory dysfunction. *Science* 217:408–417
- Sarje SK, Ingole K, Angad S, Priya B, Ghiware NB (2019) A pharmacognostic and pharmacological review on *Canna indica* Linn. *Int J Res Pharm Chem* 9(3):61–77
- Scott A, Small MD (2001) Age-related memory decline. *Arch Neurol* 58:360–364
- Sedlak J, Lindsay RH (1968) Estimation of total, protein-bound, and non-protein sulfhydryl groups in tissue with Ellman's reagent. *Anal Biochem* 25:192–205
- Shigeta M, Homma A (2001) Donepezil for Alzheimer's disease: pharmacodynamic, pharmacokinetic, and clinical profiles. *CNS Drug Rev* 7(4):353–368
- Sugimoto H (2008) The new approach in development of anti-Alzheimer's disease drugs via the cholinergic hypothesis. *Chemico Biol Interactions* 175:204–208
- Sweatt JD (2009) Aging related memory disorders-Alzheimer's Disease. Elsevier Inc. 2009:292–319

- Talluri MR, Killari KN, Viswanadha Murthy Manepalli N, Kanduri P, Kiran kumar B (2018) Protective effect of *Canna indica* on cerebral ischemia-reperfusion injury in rats, *Agric Nat Resour*
- Terry Jr. AV, Buccafusco JJ (2003) The cholinergic hypothesis of age an Alzheimer's disease related cognitived eficits: recent challenges and the implications for novel drug development. *J Pharmacol Exp Ther* 306(3):821–827
- Tharun G, Kumar P (2013) Evaluation of antioxidant potential and antimicrobial activity of successive extracts of *Pimpinella tirupatiensis*. *JOPR J Pharm Res* 7(9):817–822
- Wenk GL (1998) Assessment of spatial memory using the T maze. *Curr Protoc Neurosci* 4(1):8–5
- Wikipedia. *Canna indica*. https://en.wikipedia.org/wiki/Canna_indica. Accessed on 24 Apr 2021
- Zhishen J, Mengcheng T, Jianming W (1999) (1999) The determination of flavonoid content in mulberry and their scavenging effects on superoxide radicals. *Food Chem* 64:555–559

Publisher's Note Springer Nature remains neutral with regard to jurisdictional claims in published maps and institutional affiliations.