

How are pluripotent cells captured in culture?

Masaki Kinoshita

Received: 31 August 2014 / Accepted: 28 October 2014 / Published online: 3 December 2014
© The Author(s) 2014. This article is published with open access at Springerlink.com

Abstract In mice, three pluripotent stem cell lines have been established from different stage of developing embryo, which are embryonic stem (ES) cell, post-implantation epiblast stem cell (EpiSC), and embryonic germ (EG) cell. ES cell and EG cell share many common features including factor requirement, colony morphology, and gene expression pattern. On the other hand, EpiSC needs different external signal inputs, exhibits flattened colony morphology, and a different set of gene expression patterns. In addition, the germ line competency of EpiSCs is still unclear. To distinguish the differences between them, they are defined by the words “naïve” and “primed” pluripotent cells, respectively. This article introduces how pluripotent stem cell lines are established in culture, and how much those cells in vitro are similar or relevant to their in vivo origin and the knowledge about transcription factors to support this state.

Keywords EG cells · Epiblast · EpiSC · ES cell · Pluripotency

Introduction

Pluripotency is the word that represents the cell state that gives rise to all three germ layers: ectoderm, mesoderm, and endoderm. Pluripotent cells only exist at the early starting point of our lifetime. Importantly, this pluripotent cell state is a transient one, which can be observed in

mammalian development. We are now capable of capturing some of these pluripotent cells in culture. According to the recent progress of the imaging tools as well as embryo culture, we can monitor peri-implantation development in vitro relatively easily and also genetics allows us to examine the gene function in a stage- or tissue-specific manner. Thanks to these techniques, our understanding about how the mammalian embryo develops from fertilized egg is deepened, as is our knowledge about pluripotent stem cell in culture, especially for mice. In this article, I describe pluripotency in vivo and in vitro and their relationship together with the external signals and gene functions which support their status.

Pluripotent cells in mouse development

How totipotent cells become pluripotent cells

The fertilized egg of mice is a totipotent cell in definition because this unique cell can become every type of cell, including extraembryonic tissues such as placenta or yolk sac. After fertilization, the cell divides without increasing the total embryo size, a process called cleavage, and cells of the embryo around this stage look identical until the eight-cell stage. At the eight-cell stage, compaction occurs, and cell–cell interaction causes polarization. The cells located on the outer surface of the embryo around the 8–16-cell stage embryo become trophectoderm, which contributes to the future placenta [1, 2], and this is the first extraembryonic lineage determined in embryonic development. As the embryo develops, inside cells locate on the inside wall of the trophectoderm layer as an aggregate called inner cell mass (ICM). ICM at this stage consists of a mixed population of future epiblast cells (which

M. Kinoshita (✉)
Wellcome Trust-Medical Research Council Stem Cell Institute,
University of Cambridge, Tennis Court Road,
Cambridge CB2 1QR, UK
e-mail: mk704@cam.ac.uk

contribute to the embryo) and extraembryonic endoderm cells, which is the second lineage segregated from the embryonic lineage [3]. Just before implantation, the cells at the surface of the blastocoel commit to their fate of primitive endoderm (PrEn) as a morphologically visible single layer (Fig. 1a in red color) [3]. The mechanism for cell sorting is not well understood, but there is a tendency for cells destined to become primitive endoderm travel through the ICM toward the blastocoel in an actin-dependent manner [4, 5]. Epiblast cells after the PrEn cells segregated (Fig. 1a, blue color) are the pluripotent cells because all of the somatic cells are derived from these cells.

Epiblast cells after implantation

After implantation, apolarized ICM cells continue to proliferate and line up as one sheet of epithelial cells which have an apical-basal polarity in a cup-shaped structure called an egg cylinder in rodents, disc in other mammals. The polarized epiblast cells are attached to the basement membrane produced by surrounding visceral endoderm cells (Fig. 1b). Recent study suggests that apical constriction of basement membrane-anchored ICM cells causes

cavity formation at the apical surface of ICM cells [6]. Another study from embryoid body-based cavity formation analysis [7, 8] shows that cells that are not incorporated into the epithelial layer undergo apoptosis. These mechanisms both contribute to make proamniotic cavity.

Epiblast cells collected from embryonic day (E)6 and E7 embryo do not colonize the embryo when injected into the blastocyst stage [9], but these cells were shown to make all three germ layer derivatives when ectopically introduced into another host animals [10, 11]. The cells constituting postimplantation epiblast have been shown to contribute efficiently to PGCs in vitro when cultured in high doses of bone morphogenetic protein (BMP). These studies show that post-implantation epiblast cells still harbor pluripotency that can give rise to any types of the cells, including germ cells [12].

Unipotent cell converts to pluripotent cell in vivo

Another type of pluripotency-related cell observed in the developing embryo is the germ cell. Germ cells are unipotent cells that normally give rise to sperm or egg. In developing mice, primordial germ cells (PGCs) firstly emerge around the pre-gastrulation stage as a few *Blimp1*

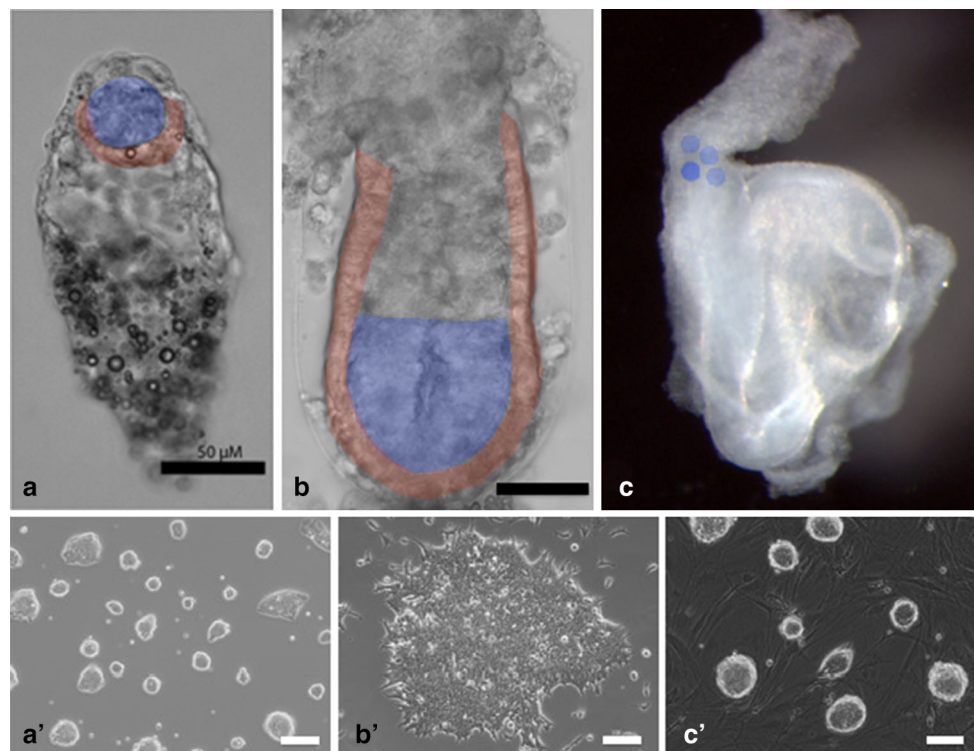


Fig. 1 Pluripotent cells in culture and their origin in embryos **a** E4.5 mouse embryo. **a'** Mouse embryonic stem cell cultured in 2i and LIF on a gelatin-coated plate. **b** E5.5 mouse embryo. **b'** Mouse EpiSC cultured in activin and bFGF on fibronectin-coated plate. **c** E8.5 mouse embryo. **c'** Mouse EG cells cultured in 2i and LIF with feeder

cells. Cells in *blue* in **(a, b)** show the pluripotent epiblast and in **c** show the location of PGC cells at this stage. *Red* cells in **(a, b)** are extra-embryonic endoderm cells. *Scale bar* in **a, b** is 50 μ m and **a'-c'** is 100 μ m

Table 1 Features of naïve and primed cells

	ES/EG cells	EpiSCs
Embryonic stage of origin	E3.5–E4.5(ES)/E8.5–E12.5 (EG)	E5.5–E8.0
Culture condition	2i/2iL	Activin, FGF
Morphology	Dome shape, psuedo-epithelial (no polarity)	Flattened, epithelial
X state in female cells	XaXa	XaXi
Global DNA methylation	Hypo in 2i LIF culture	Hyper
Histon marks	Low to moderate global H3K27me3 marks. Some bivalent (both H3K4 and H3K27 at the same loci)	Moderate to high global H3K27me3 marks. Some bivalent (both H3K4 and H3K27 at the same loci)
Germ line competency	Yes	Not clear
FGF signal	Differentiation	Self renew
LIF signal	Enhance self-renewal	No effect, enhance reprogramming back to naïve cell
Extraembryonic lineage potential	Trophectoderm, primitive endoderm (by artificial gene overexpression)	None

expressing alkaline phosphatase (AP)-positive cells in the posterior proximal epiblast [13, 14]. These cells proliferate and repress the somatic gene programs during gastrulation [15]. They form AP-positive cell clusters at the bottom of the allantois. Then PGCs migrate along the hindgut and colonize the aorta-gonad-mesonephros (AGM) region until around E12.5 to become mature germ cells. Though PGC itself in vivo is not pluripotent but uni-potent, these PGCs are the origin of embryonal carcinoma (EC), which is sometimes observed in 129 mice strains [16]. EC tumors contain three germ layer derivatives, so PGC is not normally pluripotent, but rarely, it converts to pluripotent cell state in vivo.

Pluripotency in culture

Pluripotent cells from peri-implantation-stage epiblast

As introduced above, there are transient pluripotent cell states during development, and nowadays we can establish pluripotent stem cell lines from these different stages of the developing embryo. Mouse embryonic stem (ES) cells (Fig. 1a') are established from pre-implantation stage ICMs (E3.5–E4.5), post-implantation epiblast stem cells (EpiSCs) (Fig. 1b') are established from peri-gastrulating embryo (E5.5–E8.0), and we also can establish pluripotent stem cells in vitro from PGCs [from E8.5 (Fig. 1c) to E12.5], called embryonic germ (EG) cells (Fig. 1c') [17, 18] (Table 1). Interestingly, ES and EG cells have different origins in terms of developmental stage, but they share common features including culture condition, growth factor requirement and chimera formation ability.

Historically, in vivo pluripotency was first shown in EC cells [19]. When these cells are ectopically transplanted into a recipient animal, they give rise to tumors that consist of three germ layer-derived cells. EC cells were then shown to have the ability to contribute to host embryo development to make a chimeric animal when injected into

blastocyst-stage embryos [20], but only a few EC cell lines have this ability. Reliable contribution to chimera is one of the special features of mouse ES cells, different from EC cells, focused on in this article.

mES cells were first established from the ICM of the blastocyst-stage embryo in 1981 [21, 22]. mES cells injected into a host embryo can contribute to every somatic lineage including germ cells in accordance with the host embryo development. Contrary to the features that EC cells are different from line to line, ES cells are more similar to each other in terms of morphology, culture condition, and ability for making chimeric animal. Since then, researchers are in pursuit to understand why these cells can be kept undifferentiated in vitro. ES cells are derived from the early embryo, so can be used for understanding early mammalian development as an in vitro model, and also human ES cells can be expected to be used for clinical applications in so-called “regenerative medicine.” Another useful role of ES cells is making transgenic animals. Because ES cells can contribute to every cell type including germ cells, once the transgenic ES cells are established by homologous recombination of the gene of interest, mating the chimeric animal to a wild type allows establishment of new mouse lines that can be used for gene function analysis.

Pluripotent cells from post-implantation epiblast

EpiSCs has been reported in 2007 from mouse post-implantation-stage embryo [23, 24] and rat post-implantation-stage embryo [23]. This pluripotent cell line is established from post-implantation-stage epiblast, so it is called post-implantation epiblast stem cell (EpiSC) to distinguish from ES cells established from pre-implantation-stage epiblast. EpiSC lines have some similarities to human ES cells that are established from human blastocysts [25]. For example, growth factor requirements for these cells are basic fibroblast growth factor (bFgf) and activin instead of leukemia inhibitory factor (LIF). Their morphology is a flat

two-dimensional colony, but mES cells are dome-shaped and three-dimensional. Pluripotency of these cells is shown by teratoma forming ability when ectopically transplanted into immune-deficient host animals, but when injected into blastocysts, mEpiSCs very rarely contribute to a chimeric animal [23]. Recently, E-cadherin overexpressing EpiSC was reported to contribute to chimeras by blastocyst injection, but the underlying mechanism is still unknown [26], and no germ line contribution of these cells was observed. Another group injected EpiSC into ex vivo cultured egg cylinder-stage embryos of the equivalent developmental stage to EpiSC origin. They reported that injected EpiSC into E7.5 embryo incorporate into the host and contribute to chimeric tissue including AP-positive, putative germ cells [27]. In human ES cell differentiation culture, there are some reports that hES cells differentiate into VASA-positive pre-meiotic germ cells in three-dimensional culture, though it is still controversial whether these types of stem cells have the potency to become germ cells [28–30].

Another similarity is that both human ESC and mouse EpiSC are fragile when dissociated at the single cell level; they activate the pathway to apoptotic cell death triggered by blebbing. When Rho-associated coiled-coil containing protein kinase (ROCK) inhibitor is added to block this, cell death can be avoidable [31, 32].

Pluripotent cells from PGC

EG cells were first established from PGCs of E8.5 and E12.5 in the presence of stem cell factor (SCF), LIF, and bFGF [17], and it has been confirmed that they are germ line-competent cell lines [33, 34]. As described above, PGC in vivo is a uni-potent cell that only makes sperm or egg, so the conversion of PGC to EG cell is an in vitro reprogramming process. Once they become EG cells, they are very similar to ES cells in every aspect. For example, they can grow in serum and LIF or 2i condition (a recently establish culture condition for ES cells containing two kinase inhibitors [35], described later in this article), and their gene expression profiles and DNA methylation status are similar to those of ES cells [36].

Naïve and primed pluripotency

Because of obvious differences between established pluripotent stem cells, the pluripotent state of EpiSC is defined as “primed pluripotency” to distinguish from mES and mEG cells’ “naïve pluripotency” [37]. Naïve and primed states have some more, different features (listed in Table 1). One example is that female naïve mES cells have both active X chromosomes (XaXa), but primed female stem cells have only one active chromosome and the other

is inactivated (XaXi). This might represent the difference of the developmental stage from which each type of cells is established.

Reprogrammed pluripotency

In 2006, Takahashi and Yamanaka found a new technology to induce pluripotent stem cells from terminally differentiated somatic cells by the specific combination of transgenes (Oct3/4, Sox2, Klf4, and cMyc) [38]. The finding was striking in showing that the key transcription factor(s) are sufficient to change the fate into totally different types of cells. These reprogrammed cells are named induced pluripotent stem (iPS) cells. When these Yamanaka factors are introduced into mouse embryonic fibroblasts, they form the dome-shaped colony that can be maintained similar to ES cells and these reprogrammed cells can colonize a host animal when injected into the blastocyst-stage embryo to make a chimeric mouse. Importantly, germ line competency of the iPS-derived chimeras were confirmed in 2007 [39–41]. In 2011, Hayashi et al. [42] succeeded in inducing mouse PGC-like cells from male ES cells as well as male iPS cells, which can be a functional sperm when introduced into seminiferous tubules of the host male. They also succeeded in making functional female PGC-like cells from both ES cells and iPS cells [43]. These female PGC-like cells can become mature oocytes when transplanted into host animals and make offspring by in vitro fertilization.

iPS technology is applied to reprogram human somatic cells as well. This technology is really useful because we can utilize patient-derived iPS as a disease model to uncover the mechanism of disease development and drug discovery, as well as a tool to understand human development and a potential application for future cell or tissue replacement therapy directly.

Development of culture conditions for mES cells

Culture condition towards serum free

ES cells had been cultured on mouse embryonic fibroblast cells as a feeder of essential factor(s) for maintenance with strictly tested and selected serum as a source of growth factor supplement. In 1988, Smith et al. and Williams et al. [44, 45] reported that one cytokine, LIF, could support ES cell self-renewal without feeder cells, and showed that LIF is the essential factor provided by feeder cells. Smith et al. [46] further developed serum-free culture conditions with BMP4 and LIF. mES cells are known to be prone to differentiate into the neural cell lineage in serum-free media, and what they showed is that inhibition of neural induction

by BMP4 in addition to activation of STAT3 by LIF signaling is sufficient to block differentiation and maintain pluripotent self-renewal. Serum can be replaced by chemically defined supplement, knockout serum replacement (KSR from Life Technologies), and ES cells can be cultured without feeder cells in the presence of LIF, but it is not sufficient to propagate from single cell in this condition. Ogawa et al. [47] established adrenocorticotrophic hormone (ACTH), KSR and LIF conditions to grow at clonal density.

In 2008, Qi-Long Ying et al. [35] established a novel serum-free ES cell culture method that contains two kinase inhibitors for GSK3 (CHIR99021) and Mek inhibition (PD0325901) in the basal medium, so now it is simply called 2i. This 2i condition firstly enabled us to culture ES cells without LIF or its downstream signal transducer, Stat3. In addition to its lack of necessity for LIF, this 2i condition allows us to establish NOD mouse ES cell lines [48, 49] and rat ES cell lines [50, 51], which were impossible to establish before the discovery. In addition to rat ES cells, the 2i condition allows us to establish rat EG cells at the first time [52]. This condition allows us to culture mES cells in a more homogeneous manner, which is called “ground state” of mES cell.

ES cells cultured in serum and LIF

It is also well known that undifferentiated ES cells cultured in conventional ES cell culture conditions such as serum and LIF without feeders are very heterogeneous in terms of gene expression and morphology. For example, Oct3/4 (also known as Pou5f1) is widely expressed in serum containing culture conditions, but Rex1 (also known as Zfp42) is not. Toyooka et al. [53] established a GFP knock-in reporter ES cell line in *Rex1* gene locus and showed that Rex1-GFP-positive cells emerged from its negative fraction and vice versa, but Rex1-negative cells did not contribute to chimeras. From this observation, ES cells are considered to fluctuate between partially differentiated and undifferentiated status under serum and LIF conditions. Genes such as Nanog, Dppa3, Klf4, Tbx3, and Esrrb are also known to fluctuate in this culture condition [54–57].

What makes it possible to keep cells undifferentiated in culture?

LIF signaling

Before the discovery of 2i culture, LIF was the sole molecule known to support self-renewal of mouse ES cells in the presence of serum-derived factors, thus its downstream signal and transcription factor network was extensively

examined for a few decades. LIF is a cytokine that belongs to the interleukin 6 family and binds to LIF receptor to make a heterodimer with gp130 (also known as Il6st). This dimerization makes Janus Kinase (JAK) phosphorylate gp130 and Stat3. Phosphorylated Stat3 trans-locates into the nucleus where it works as a transcription factor in ES cells [58]. gp130 is also known to activate Ras-Mapk signal and PI3-Akt signal pathways in parallel to Stat3. Firstly, Stat3 was shown to be a sufficient molecule to support LIF-independent self-renewal [59]. Matsuda et al. constructed a fusion protein that has a modified ligand binding domain of the estrogen receptor combined at the c-terminal of Stat3, called Stat3-ER. The localization of this fusion protein is controlled by the addition of 4-hydroxytamoxifen (4-OHT). They reported that the addition of 4-OHT in media without LIF (this recruits the fusion protein into the nucleus) is sufficient to support self-renewal. From this observation, the Stat3 pathway is considered as the main pathway activated by LIF.

Downstream of Stat3 target

By over-expressing the gene of interest in ES cells, we can check their ability to support LIF-independent self-renewal. Like forced nuclear localization of Stat3 supporting LIF-independent self-renewal [59], Nanog, Esrrb, Tbx3, Klf2, Klf4, Klf5, Gbx2, and Tfcp2l1 are also identified to be able to bypass LIF-Stat3 signaling [56, 60–67]. This showed that these transcription factors make a gene regulatory network in parallel or downstream of Stat3. In addition to these transcription factors, PI3 kinase and Akt signaling activated by LIF and gp130 were also reported to support self-renewal of mES cells [68, 69].

FGF-Mapk signal

Among the Fgf family molecules, Fgf4 is the main Fgf produced by mES cells. Fgf4 starts to be expressed at around 4–8-cell-stage embryo, and continues its expression in the ICM of blastocyst and egg cylinder stages [70]. Genetically inactivated *Fgf4*-null embryos fail to implant or produce pluripotent ICM outgrowth in vitro, so Fgf4 was considered as a molecule that supports proliferation of pluripotent cells in vivo and in vitro in an autocrine manner [71]. To test this possibility, *Fgf4* null ES cells have been established, and found to have no effect in proliferation or maintenance of the undifferentiated state [72]. Kunath et al. [73] showed in 2007 that Fgf4 is essential for exit from self-renewal to differentiate. They showed that *Fgf4* null ES cells can differentiate neither into neural nor mesoderm lineages without the addition of Fgf4 into the media. Fgf activates PI3 K in addition to Ras-Mapk pathways. They also showed that Erk2 is the main downstream molecule

that corresponds to this Fgf4 signaling by using *Erk2* KO ES cells.

Essential genes for keeping the specific gene regulatory network in the mES cell

A number of genes have been identified that are highly or specifically expressed in undifferentiated ES cells compared to somatic cell lines or cancer cell lines, although only a few genes have been reported to play an essential role in the maintenance of undifferentiated mES cells (Table 2). Oct3/4 is one such essential key player in organizing the transcription factor network. On the other hand, Sox2 is expressed in many other cell types and cancer, however it makes heterodimer with Oct3/4 and plays a crucial role in ES cells. These two genes are the original half of the Yamanaka four-factor cocktail with Klf4 and cMyc, which are sufficient for somatic cell reprogramming [38]. In this section, I introduce some of them on top of Oct3/4 and Sox2.

Oct3/4

Oct3/4 (also known as Pou5f1) was reported by two groups independently, as Oct3 [74] and Oct4 [75], and so this molecule is called Oct3/4 in this review. Oct3/4 is a homeobox protein, and binds to octamer DNA motif. Oct3/4 is expressed in pre-implantation-stage embryos and also supplied as a maternal factor from oocytes. *Oct3/4* knockout embryos fail to establish a pluripotent inner cell mass at the blastocyst stage and die around implantation [76], showing that it is required for early development. Oct3/4 is proven to be essential for maintenance of in vitro pluripotency by conditional knockout in ES cells [77]. ZHBTc4 ES cells do not harbor both endogenous *Pou5f1* gene loci but are maintained undifferentiated by a tetracycline (Tet) inducible *Oct3/4* transgene. Tet addition into the culture media results in a rapid loss of Oct3/4 protein and differentiation into trophectoderm cells through depressing the *Cdx2* and *Eomesodermin* genes [78].

Sox2

Sox2 is a member of the high-mobility group of transcription factors that consist of 21 genes. Different from the expression pattern of Oct3/4, which is restricted to pluripotent epiblast and germ cell lineages during early development in mice, Sox2 expression is more broad in the embryo, and it is also expressed in the trophectoderm cell lineage in addition to epiblast [79]. *Sox2* KO embryos can implant but fail to propagate pluripotent epiblast, resulting in lethality before gastrulation [80]. This

phenotype is different from Oct3/4. *Sox2* KO ES cells are established by using a similar approach to Oct3/4 [81]. *Sox2* deletion also causes differentiation into trophectoderm-like cells but interestingly this *Sox2* deletion mutant ES cell phenotype was rescued by forced expression of Oct3/4, indicating that its function overlaps. Actually, it is now also known that Oct3/4 and Sox2 make heterodimer and co-bind to the same locus to maintain pluripotency [82, 83]. Deletion of Oct3/4 cause the rapid down regulation of known common target genes [58, 78], but Sox2 deletion needs more time to down-regulate these genes [81], suggesting that Sox2 function is more supportive in these common target sites.

Nanog

Another important molecule that is required for the establishment of pluripotent cells is Nanog. Nanog was identified most recently compared to other important classic genes. Nanog, which belongs to a homeobox protein group, was discovered by two independent groups, and named after the mythological Celtic land of ever young, “tir nan og” [60, 84]. Nanog expression starts at the compacted morula stage, and then becomes restricted to the ICM of the blastocyst, but is quickly down-regulated at around the time of implantation [60]. Nanog is essential for establishment of in vivo pluripotency [84] and also required for in vitro reprogramming of differentiated cells [85], but is not required for maintenance of pluripotency in vitro [54].

Most of the transcription factors required for in vivo epiblast formation are not required for in vitro pluripotency

Oct3/4 and Sox2 are important molecules for the pluripotency-associated gene regulatory network, but there are several genes that play important roles in the establishment of in vivo pluripotent epiblast cells but not essential for the maintenance in vitro, such as Nanog. Also, there are several genes that are thought to be important by gene over-expression studies, but KO has no phenotype. These are summarized in Table 2, and some of them are described more in this text. *Sall4* KO mice fail to develop after implantation, although both ICM and TE cells appear intact at the blastocyst stage. *Sall4* null ICM has difficulty in propagating in vitro to establish ES cell lines [86]. To address the roles in the maintenance of gene networks in ESCs, conditional KO was performed using a floxed allele, and from this study, *Sall4* was found not to be required for the gene regulatory networks, but for repression of TE differentiation through the direct interaction with histone deacetylase (HDAC) [87].

Table 2 List of gene knockout/knockdown phenotypes in mouse and ES cells

	KO mice phenotype (major phenotype if more than one)		KO in ES cultured in serum and LIF	KO in ES cultured in 2i and LIF	References
Oct3/4 (Pou5f1)	Peri-implantation lethal	No ICM out growth	Trophectoderm differentiation	No report	[76, 77]
Sox2	Peri-implantation lethal	No ICM out growth	Trophectoderm-like differentiation	No report	[80, 81]
Nanog	Peri-implantation lethal	No ICM out growth	Unstable, but keep pluripotency	Maintain pluripotency	[54, 60, 84]
Klf4	Neonatal lethal (P0)	Skin Defect	No phenotype ^a	No report	[93, 135, 136]
Tbx3	Embryonic lethal (E9.5-11.5)	Yolk sac, limb and mammary gland development	Differentiation ^a	Maintain pluripotency ^a	[94, 137, 138]
Sall4	Peri-implantation lethal	No ICM out growth	No phenotype with feeders	Maintain pluripotency ^a	[86, 94, 139]
Esrrb	Embryonic lethal (E9.5-11.5)	Placenta defect	Mild differentiation	Differentiation in 2i without LIF	[64, 89]
Prdm14	Infertility	Germ cell defect	Differentiation	Maintain pluripotency	[88, 140, 141]
Foxd3	Peri-implantation lethal	No ICM out growth	Differentiation into both extraembryonic and embryonic lineage	No report	[142, 143]
Nr0b1 (Dax1)	Infertility	Reproductive defect	Differentiation	No report	[144, 145]
Klf2	Embryonic lethal (E12.5-14.5)	Erythroid development	No phenotype	Maintain pluripotency ^a	[94, 146, 147]
Klf5	Peri-implantation lethal	No ICM out growth	Slow cell growth	No report	[62]
Gbx2	Embryonic lethal	Brain development	No phenotype ^a	Maintain pluripotency ^a	[65, 94, 148]
Tfcp2l1	Postnatal phenotype	Defects in duct development	Mild differentiation ^a	Maintain pluripotency ^a	[66, 67, 94, 149]
Stat3	Embryonic lethal (E6-7) (Zygotic KO) Peri-implantation lethal (Maternal/Zygotic KO)	No outgrowth in serum and LIF	Differentiation	Maintain pluripotency in 2i	[35, 96, 150]
Rex1 (Zfp42)	No obvious phenotype		No phenotype	No phenotype ^b	[151]

^a Shows the phenotype of gene knock-down

^b Unpublished observation from Austin Smith’s and Jennifer Nichols’ laboratories

Prdm14 (PR domain containing 14) was identified as an essential gene for establishment of the germ cell lineage in mice [88]. It is reported in conventional ES cell culture medium containing serum and LIF that *Prdm14* KO ES cells

cannot be established, but it is possible by using 2i culture. *Prdm14* KO ES cells have an elevated level of Fgf signaling pathway, so in the presence of Mek inhibitor, *Prdm14* null cells can be maintained. *Prdm14* null cells also have an

increased level of DNA methylation at the de novo methylation site by the up-regulation of DNA methyltransferase (Dnmt) genes. Prdm14 protein physically interacts with Jarid2 and Suz12, members of the Polycomb repressive complex (PRC) 2, suggesting that the function of Prdm14 is to recruit PRC2 complex into the promoter region that is active in primed state epiblast cells including Dnmts.

Esrrb was recently reported as a downstream molecule of LIF signaling [64] and *Nanog* [63], and *Esrrb* (-/-) ES cells can be maintained in conventional culture [64]. However, in 2i culture, *Esrrb* (-/-) is essential for maintenance of pluripotency as an important GSK3 inhibition target, so it is considered as an important molecule in the maintenance of naïve pluripotency. From KO study, the *Esrrb* gene is apparently not required for epiblast development [89].

Single KO might be compensating for the other functional overlapping factors. Some of the transcription factors have other closely related family members, which are expressed together. For example, in the developing embryo, double KO of *Gata1* and *Gata2* [90], *Klf2* and *Klf4* [91] cause more severe phenotypes in blood cell development than single KO, or another example is *Tead1* and *Tead2* in notochord development [92]. In case of mES cells, three members of *Klf* family genes such as *Klf2*, *Klf4*, and *Klf5* are expressed in undifferentiated state. Only simultaneous knockdown of these three (not any of the combination) shows the collapse of the network [93]. In addition to the compensation by the family gene, there is a genetic interaction between genes. To understand these complexities, it is necessary to establish compound KO cells. Recently, a computational modeling approach revealed that combination of gene knockdown can be predicted and some are sufficient to induce the network collapse in ES cells [94].

Is this capturing in vivo pluripotency in vitro?

LIF-Stat3 signaling pathway

The question comes from the developmental biological aspect: LIF signaling plays an important role in culturing ES cells in vitro, but how does this signal work in vivo? LIF is expressed in the blastocyst-stage embryo only in trophoblast cells, and its receptor *Lifr* and *gp130* are expressed in the ICM, detected by mRNA in situ hybridization [95]. Although it is expressed, it was unclear if this signal is active in this stage of embryo. Immunostaining of phospho-Stat3 suggests that at least the signal is active in ICM cells [96], but *Stat3* KO embryos survive over implantation, and die around E6-7 [97]. *Lif*, *Lifr*, and *gp130* KO embryos are known to develop normally until around mid-gestation. *Lif* KO mice are born, but with female

infertility because blastocysts are unable to implant in *Lif* (-/-) uteri [98]. *Lifr* KO mice have a perinatal lethality with a defect in motor neuron development [99, 100]. *gp130* KO mice die around E12.5-16.5 due to cardiac and hematopoietic defects [101]. From these, the LIF signal was thought not to be essential for the establishment of pluripotent epiblast cells.

Embryonic diapause is a phenomenon observed in some mammals to keep the embryo un-implanted in the uterus during lactation [102]. Interestingly, ES cells were first established from embryos in diapause [21]. New insight came after the analysis of *Lifr* and *gp130* mutant embryos in a diapause [103]. *Lifr* and *gp130* compound heterozygotes were intercrossed to generate double-mutant embryos, and pregnant mothers were ovariectomized to induce diapause. After a certain period of diapause, embryos lacking both *gp130* and *Lifr* transferred into pseudopregnant females could not be recovered. *gp130* KO embryos in diapause showed no surviving epiblast cells and culture outgrowth from *gp130* (-/-) embryo yielded only extraembryonic endoderm cells. Recently, maternal/zygotic *Stat3* null embryos have been analyzed, and revealed its requirement for the maintenance of pluripotent ICM cells during implantation [96]. These results strongly support the idea that *Stat3* activation by LIF or other stimuli is required to keep the pluripotent ICM in vivo as well as in vitro.

Two kinases inhibition in vivo

How about the 2i cultured cells? 2i medium consists of inhibitors of two protein kinase: Mek and GSK3. ES cells can be propagated without LIF in this condition. Mek is a component of FGF-Mapk signaling and GSK3 is a component of the beta-catenin destruction complex, which is involved in the canonical Wnt signaling pathway. Here I try to uncover one by one.

Mek inhibition

Among the 22 Fgf ligands and four receptors [104], only *Fgf4* and *Fgfr2* disruption resulted in pre-implantation lethality [71, 105]. As described above, *Fgf4* is produced by undifferentiated ES cells, but is not required for either the maintenance or growth of pluripotent cells in vitro [72]. Rather it is required for differentiation [73]. How does this signal work in the embryo? Single-cell gene expression analysis at E3.5 revealed that *Fgf4* is expressed in the *Nanog*-positive epiblast lineage and its receptor *Fgfr2* is expressed in *Gata6*-positive primitive endoderm cells [106]. The effect of Fgf inhibition during pre-implantation development was examined by adding these inhibitors in the culture medium from different time points of development [107]. When eight-cell-stage embryos are cultured

with these inhibitors or Mek inhibitor alone for 2 days, the primitive endoderm lineage marked by the expression of Gata4 protein is almost completely blocked and every ICM cell expresses Nanog. Injecting these ICM cells into another blastocyst revealed that these cells possess pluripotency. However, if the two inhibitors are added after blastocyst formation, at E3.75 then the embryos cultured for 2 days, embryonic development, and lineage segregation are not affected.

Yamanaka et al. [1] performed the opposite experiment for analyzing Fgf function in primitive endoderm formation. When 2–4-cell-stage embryos (E1.5) were treated with a very high concentration of Fgf4 with heparin, this resulted in the conversion of ICM cells into Gata6-positive primitive endoderm cells at the expense of Nanog-positive epiblast lineage cells. From these observations, Mek inhibition suppresses PrEn and enhances lineage commitment of ICM cells towards epiblast lineage.

GSK-3 inhibition

GSK-3 is a serine/threonine kinase that is widely expressed and consists of two different gene products, GSK-3 α and GSK-3 β [108–110]. GSK-3 α and GSK-3 β have a highly conserved kinase domain, so most of the inhibitors affect both of them together [111]. One of the functions of GSK-3 is to interact with scaffolding protein Axin and Adenomatous polyposis coli (APC) to make β -catenin destruction complex. This complex phosphorylates the N-terminus of β -catenin, and phosphorylated β -catenin is then ubiquitinated, followed by degradation with proteasome. When Wnt ligands bind to its receptor Frizzled and Lrp5/6, GSK-3 does not phosphorylate β -catenin, resulting in escape from proteasome-mediated degradation. This β -catenin translocates into the nucleus and binds to Tcf3 [112]. Tcf3 belongs to the repression type of transcription factors, and β -catenin binding abrogates the repressor function of Tcf3 to continue to express pluripotency-associated genes. Consistent with this, *Tcf3* KO ES cells show pronounced delay to exit from pluripotency [113, 114]. KO embryos show delayed shut down of pluripotency genes during gastrulation, and inhibit mesodermal gene expression [115].

Recombinant Wnt3a added to culture media is reported to enhance the self-renewing activity of mES cells [116, 117], but the importance of the Wnt signal in the in vivo blastocyst-stage embryo is not well characterized because there is no evidence for Wnt function in blastocyst-stage embryo by KO studies. Axin2 is the direct target of canonical Wnt signaling pathway, so this gene is used as a marker to visualize active Wnt signals [118]. Pre-implantation-stage embryos express the *Axin2*-LacZ reporter only in the ICM regions and its expression diminishes after

implantation [119]. The Wnt signal might be active in the developing and proliferating naïve pluripotent cell, but this signal itself is not necessary for establishment and maintenance of the pluripotent state in vivo, shown by *Porcn* KO embryo [120]. From these observations, it is unclear that the Wnt signal plays a role in enhancing the pluripotent state in vivo, and it is necessary to analyze these KO embryos in diapause to conclude in future.

Gene expression comparison between ES cells and ICM cells

Recent technology revealed the gene expression profile from small amounts of cells, and even from a single cell [106, 121] of peri-implantation-stage embryo. Tang et al. compared gene expression profiles during the process of ICM outgrowth to ES cells. They showed the difference between E3.5 ICM and ES cells cultured in serum and LIF. Most recently, Boroviak et al. [122] examined the gene expression profile from the pre-implantation-stage to post-implantation-stage epiblast and compared gene expression with cells cultured in 2i or 2i and LIF. According to the gene expression profile by Boroviak et al., naïve ES cells are most similar to the epiblast cells at E4.5 after primitive endoderm cells are segregated. They also showed efficient establishment of ES cell lines from E4.5 epiblast.

Is EpiSC relevant to post-implantation epiblast?

EpiSC are stem cells that can be established from a broad range of developmental stages from E5.5 to E8.0. It is important to culture the cells expressing Oct3/4 to establish the stem cell line [123]. Although their origins vary, the cells in culture have very similar gene expression profiles, and the expression of lineage marker genes, for example T or Sox17, are heterogeneous. Global gene expression pattern analysis shows that EpiSC lines in culture are most similar to the anterior primitive streak cells in the gastrulation-stage embryo [124]. Basic features of EpiSC are conserved between lines, but they are variable between labs because the culture condition is slightly different. Essential components to support their self-renewal are activin and Fgf signal. Some labs used feeder cells and bFgf only relying on activin production by feeders and endogenous Nodal, but others used serum or KSR in addition to activin A and bFgf. Recent findings by two independent groups suggest the model by which we can maintain the EpiS cell in a more pure state. They used the addition of Wnt signal inhibitor XAV939 [125, 126]. This is a reasonable component because Wnt signal in the post-implantation embryo enhances mesoderm and endoderm formation and heterogeneity observed in the culture are spontaneous differentiation of T or Sox17-positive cells.

Conclusions

Since the establishment of mES cells as a genuine pluripotent stem cell, the secrets behind it have been uncovered one by one. Especially, after the discovery of LIF as an essential external signal, the analysis of the gene regulatory network downstream of this signal is intensively progressed and key transcription factors have been identified. After the discovery of 2i culture, we can keep the mES cells in the homogeneous manner as a ground state. This means we have been able to overcome the differences potentially existing in the different laboratories to further investigate properties of the naïve state in vitro. Gene expression analysis by Boroviak et al. [122] supports the idea that this ground state is not an artifact but rather it is captured in vivo pluripotent cell in vitro.

On the other hand, we have not found a core gene regulatory network of primed cells yet. EpiSCs can be a very good tool to analyze different states of pluripotency, which might be governed by different sets of pluripotency gene regulatory networks with lineage marker genes like *Otx2* [127, 128] or *Eomesodermin* [129]. It is unclear why these cell lines lose germ line competency [42]. Interestingly, except for mice and rats, it is very difficult to establish naïve pluripotent stem cells in other mammals. The developing human embryo has a slightly different morphological feature compared with mice at the late blastocyst stage. In human, ICM cells at late blastocyst stage make a single layer of epiblast cells overlying the extraembryonic layer before implantation, on the other hand, the mouse epiblast at this stage is a three-dimensional aggregate under the extraembryonic endoderm layer. This evokes the speculation that the human embryonic stem cell is more natural and stable in the primed than naïve state, which might exist only at the early blastocyst stage in a small time window in human. In addition to this thought (i.e., naïve or primed), so far, it seems to be very difficult to establish non-human primate chimeric animals by injecting cultured pluripotent stem cells. The reason for this difficulty is not clear yet, however the fact that EpiSC can make chimeras only when injected into post-implantation epiblast suggests that we need to capture the proper naïve state from those animals.

Compared to human, in mice, we now understand well what kind of cell identity it has and how similar mES cells are to their in vivo counterparts, so it is time to analyze how to start to differentiate. We know ES cells can differentiate, but little is known how. Recently, some reports tried to identify new molecules that are required for the exit from the ground state [130–132]. Mouse ES cells have a longer history than human, however knowledge about human ES cell are rapidly accumulated. Recently, human ES cells that have a similar gene expression signature to mouse naïve

state have been reported [133, 134]. From these reports, we are starting to open the gate for proper human naïve cells. In conclusion, I optimistically speculate in the near future that we can manage to capture and control the undifferentiated state and differentiation of various types of pluripotent stem cells (which might be reflecting different stages of embryonic development) from various animals in vitro.

Acknowledgments I thank Austin Smith and Jenny Nichols for critical reading of this manuscript and helpful comments and discussions. I also thank Joerg Betschinger for the initial discussion about this manuscript. The author works in the laboratory of Austin Smith, funded by the Wellcome Trust and Medical Research Council.

Conflict of interest Masaki Kinoshita declares that he has no conflicts of interest to disclose.

Open Access This article is distributed under the terms of the Creative Commons Attribution License which permits any use, distribution, and reproduction in any medium, provided the original author(s) and the source are credited.

References

1. Yamanaka Y, Lanner F, Rossant J. FGF signal-dependent segregation of primitive endoderm and epiblast in the mouse blastocyst. *Development*. 2010;137:715–24.
2. Nishioka N, Inoue K, Adachi K, Kiyonari H, Ota M, Ralston A, et al. The Hippo signaling pathway components Lats and Yap pattern Tead4 activity to distinguish mouse trophectoderm from inner cell mass. *Dev Cell*. 2009;16:398–410.
3. Chazaud C, Yamanaka Y, Pawson T, Rossant J. Early lineage segregation between epiblast and primitive endoderm in mouse blastocysts through the Grb2-MAPK pathway. *Dev Cell*. 2006;10:615–24.
4. Plusa B, Piliszek A, Frankenberg S, Artus J, Hadjantonakis AK. Distinct sequential cell behaviours direct primitive endoderm formation in the mouse blastocyst. *Development*. 2008;135:3081–91.
5. Meilhac SM, Adams RJ, Morris SA, Danckaert A, Le Garrec JF, Zernicka-Goetz M. Active cell movements coupled to positional induction are involved in lineage segregation in the mouse blastocyst. *Dev Biol*. 2009;331:210–21.
6. Bedzhov I, Zernicka-Goetz M. Self-organizing properties of mouse pluripotent cells initiate morphogenesis upon implantation. *Cell*. 2014;156:1032–44.
7. Coucouvanis E, Martin GR. Signals for death and survival: a two-step mechanism for cavitation in the vertebrate embryo. *Cell*. 1995;83:279–87.
8. Coucouvanis E, Martin GR. BMP signaling plays a role in visceral endoderm differentiation and cavitation in the early mouse embryo. *Development*. 1999;126:535–46.
9. Gardner RL, Lyon MF, Evans EP, Burtenshaw MD. Clonal analysis of X-chromosome inactivation and the origin of the germ line in the mouse embryo. *J Embryol Exp Morphol*. 1985;88:349–63.
10. Diwan SB, Stevens LC. Development of teratomas from the ectoderm of mouse egg cylinders. *J Natl Cancer Inst*. 1976;57:937–42.
11. Beddington RS. Histogenetic and neoplastic potential of different regions of the mouse embryonic egg cylinder. *J Embryol Exp Morphol*. 1983;75:189–204.
12. Ohinata Y, Ohta H, Shigeta M, Yamanaka K, Wakayama T, Saitou M. A signaling principle for the specification of the germ cell lineage in mice. *Cell*. 2009;137:571–84.

13. Lawson KA, Meneses JJ, Pedersen RA. Clonal analysis of epiblast fate during germ layer formation in the mouse embryo. *Development*. 1991;113:891–911.
14. Ohinata Y, Payer B, O'Carroll D, Ancelin K, Ono Y, Sano M, et al. *Blimp1* is a critical determinant of the germ cell lineage in mice. *Nature*. 2005;436:207–13.
15. Kurimoto K, Yabuta Y, Ohinata Y, Shigeta M, Yamanaka K, Saitou M. Complex genome-wide transcription dynamics orchestrated by *Blimp1* for the specification of the germ cell lineage in mice. *Genes Dev*. 2008;22:1617–35.
16. Stevens LC, Little CC. Spontaneous testicular teratomas in an inbred strain of mice. *Proc Natl Acad Sci USA*. 1954;40:1080–7.
17. Matsui Y, Zsebo K, Hogan BL. Derivation of pluripotential embryonic stem cells from murine primordial germ cells in culture. *Cell*. 1992;70:841–7.
18. Resnick JL, Bixler LS, Cheng L, Donovan PJ. Long-term proliferation of mouse primordial germ cells in culture. *Nature*. 1992;359:550–1.
19. Kleinsmith LJ, Pierce GB Jr. Multipotentiality of single embryonal carcinoma cells. *Cancer Res*. 1964;24:1544–51.
20. Papaioannou VE, Gardner RL, McBurney MW, Babinet C, Evans MJ. Participation of cultured teratocarcinoma cells in mouse embryogenesis. *J Embryol Exp Morphol*. 1978;44:93–104.
21. Evans MJ, Kaufman MH. Establishment in culture of pluripotential cells from mouse embryos. *Nature*. 1981;292:154–6.
22. Martin GR. Isolation of a pluripotent cell line from early mouse embryos cultured in medium conditioned by teratocarcinoma stem cells. *Proc Natl Acad Sci USA*. 1981;78:7634–8.
23. Brons IG, LE Smithers, Trotter MW, Rugg-Gunn P, Sun B, de Chuva Sousa Lopes SM, et al. Derivation of pluripotent epiblast stem cells from mammalian embryos. *Nature*. 2007;448:191–5.
24. Tesar PJ, Chenoweth JG, Brook FA, Davies TJ, Evans EP, Mack DL, et al. New cell lines from mouse epiblast share defining features with human embryonic stem cells. *Nature*. 2007;448:196–9.
25. Thomson JA. Embryonic stem cell lines derived from human blastocysts. *Science*. 1998;282:1145–7.
26. Ohtsuka S, Nishikawa-Torikai S, Niwa H. E-cadherin promotes incorporation of mouse epiblast stem cells into normal development. *PLoS One*. 2012;7:e45220.
27. Huang Y, Osorno R, Tsakiridis A, Wilson V. In vivo differentiation potential of epiblast stem cells revealed by chimeric embryo formation. *Cell Rep*. 2012;2:1571–8.
28. Clark AT, Bodnar MS, Fox M, Rodriguez RT, Abeyta MJ, Firpo MT, et al. Spontaneous differentiation of germ cells from human embryonic stem cells in vitro. *Hum Mol Genet*. 2004;13:727–39.
29. Kee K, Gonsalves JM, Clark AT, Pera RA. Bone morphogenetic proteins induce germ cell differentiation from human embryonic stem cells. *Stem Cells Dev*. 2006;15:831–7.
30. Tilgner K, Atkinson SP, Golebiewska A, Stojkovic M, Lako M, Armstrong L. Isolation of primordial germ cells from differentiating human embryonic stem cells. *Stem Cells*. 2008;26:3075–85.
31. Watanabe K, Ueno M, Kamiya D, Nishiyama A, Matsumura M, Wataya T, et al. A ROCK inhibitor permits survival of dissociated human embryonic stem cells. *Nat Biotechnol*. 2007;25:681–6.
32. Ohgushi M, Matsumura M, Eiraku M, Murakami K, Aramaki T, Nishiyama A, et al. Molecular pathway and cell state responsible for dissociation-induced apoptosis in human pluripotent stem cells. *Cell Stem Cell*. 2010;7:225–39.
33. Stewart CL, Gadi I, Bhatt H. Stem cells from primordial germ cells can reenter the germ line. *Dev Biol*. 1994;161:626–8.
34. Labosky PA, Barlow DP, Hogan BL. Mouse embryonic germ (EG) cell lines: transmission through the germline and differences in the methylation imprint of insulin-like growth factor 2 receptor (*Igf2r*) gene compared with embryonic stem (ES) cell lines. *Development*. 1994;120:3197–204.
35. Ying QL, Wray J, Nichols J, Battle-Morera L, Doble B, Woodgett J, et al. The ground state of embryonic stem cell self-renewal. *Nature*. 2008;453:519–23.
36. Leitch HG, McEwen KR, Turp A, Encheva V, Carroll T, Grablo N, et al. Naive pluripotency is associated with global DNA hypomethylation. *Nat Struct Mol Biol*. 2013;20:311–6.
37. Nichols J, Smith A. Naive and primed pluripotent states. *Cell Stem Cell*. 2009;4:487–92.
38. Takahashi K, Yamanaka S. Induction of pluripotent stem cells from mouse embryonic and adult fibroblast cultures by defined factors. *Cell*. 2006;126:663–76.
39. Okita K, Ichisaka T, Yamanaka S. Generation of germline-competent induced pluripotent stem cells. *Nature*. 2007;448:313–7.
40. Wernig M, Meissner A, Foreman R, Brambrink T, Ku M, Hochedlinger K, et al. In vitro reprogramming of fibroblasts into a pluripotent ES-cell-like state. *Nature*. 2007;448:318–24.
41. Maherali N, Sridharan R, Xie W, Utikal J, Eminli S, Arnold K, et al. Directly reprogrammed fibroblasts show global epigenetic remodeling and widespread tissue contribution. *Cell Stem Cell*. 2007;1:55–70.
42. Hayashi K, Ohta H, Kurimoto K, Aramaki S, Saitou M. Reconstitution of the mouse germ cell specification pathway in culture by pluripotent stem cells. *Cell*. 2011;146:519–32.
43. Hayashi K, Ogushi S, Kurimoto K, Shimamoto S, Ohta H, Saitou M. Offspring from oocytes derived from in vitro primordial germ cell-like cells in mice. *Science*. 2012;338:971–5.
44. Smith AG, Heath JK, Donaldson DD, Wong GG, Moreau J, Stahl M, et al. Inhibition of pluripotential embryonic stem cell differentiation by purified polypeptides. *Nature*. 1988;336:688–90.
45. Williams RL, Hilton DJ, Pease S, Willson TA, Stewart CL, Gearing DP, et al. Myeloid leukaemia inhibitory factor maintains the developmental potential of embryonic stem cells. *Nature*. 1988;336:684–7.
46. Ying QL, Nichols J, Chambers I, Smith A. BMP induction of Id proteins suppresses differentiation and sustains embryonic stem cell self-renewal in collaboration with STAT3. *Cell*. 2003;115:281–92.
47. Ogawa K, Matsui H, Ohtsuka S, Niwa H. A novel mechanism for regulating clonal propagation of mouse ES cells. *Genes Cells*. 2004;9:471–7.
48. Nichols J, Jones K, Phillips JM, Newland SA, Roode M, Mansfield W, et al. Validated germline-competent embryonic stem cell lines from nonobese diabetic mice. *Nat Med*. 2009;15:814–8.
49. Ohta H, Ohinata Y, Ikawa M, Morioka Y, Sakaide Y, Saitou M, et al. Male germline and embryonic stem cell lines from NOD mice: efficient derivation of GS cells from a nonpermissive strain for ES cell derivation. *Biol Reprod*. 2009;81:1147–53.
50. Buehr M, Meek S, Blair K, Yang J, Ure J, Silva J, et al. Capture of authentic embryonic stem cells from rat blastocysts. *Cell*. 2008;135:1287–98.
51. Li P, Tong C, Mehrian-Shai R, Jia L, Wu N, Yan Y, et al. Germline competent embryonic stem cells derived from rat blastocysts. *Cell*. 2008;135:1299–310.
52. Leitch HG, Blair K, Mansfield W, Ayetey H, Humphreys P, Nichols J, et al. Embryonic germ cells from mice and rats exhibit properties consistent with a generic pluripotent ground state. *Development*. 2010;137:2279–87.

53. Toyooka Y, Shimosato D, Murakami K, Takahashi K, Niwa H. Identification and characterization of subpopulations in undifferentiated ES cell culture. *Development*. 2008;135:909–18.
54. Chambers I, Silva J, Colby D, Nichols J, Nijmeijer B, Robertson M, et al. Nanog safeguards pluripotency and mediates germline development. *Nature*. 2007;450:1230–4.
55. Hayashi K, Lopes SM, Tang F, Surani MA. Dynamic equilibrium and heterogeneity of mouse pluripotent stem cells with distinct functional and epigenetic states. *Cell Stem Cell*. 2008;3:391–401.
56. Niwa H, Ogawa K, Shimosato D, Adachi K. A parallel circuit of LIF signalling pathways maintains pluripotency of mouse ES cells. *Nature*. 2009;460:118–22.
57. van den Berg DL, Zhang W, Yates A, Engelen E, Takacs K, Bezstarosti K, et al. Estrogen-related receptor beta interacts with Oct4 to positively regulate Nanog gene expression. *Mol Cell Biol*. 2008;28:5986–95.
58. Niwa H, Burdon T, Chambers I, Smith A. Self-renewal of pluripotent embryonic stem cells is mediated via activation of STAT3. *Genes Dev*. 1998;12:2048–60.
59. Matsuda T, Nakamura T, Nakao K, Arai T, Katsuki M, Heike T, et al. STAT3 activation is sufficient to maintain an undifferentiated state of mouse embryonic stem cells. *EMBO J*. 1999;18:4261–9.
60. Chambers I, Colby D, Robertson M, Nichols J, Lee S, Tweedie S, et al. Functional expression cloning of Nanog, a pluripotency sustaining factor in embryonic stem cells. *Cell*. 2003;113:643–55.
61. Hall J, Guo G, Wray J, Eyres I, Nichols J, Grotewold L, et al. Oct4 and LIF/Stat3 additively induce Krüppel factors to sustain embryonic stem cell self-renewal. *Cell Stem Cell*. 2009;5:597–609.
62. Ema M, Mori D, Niwa H, Hasegawa Y, Yamanaka Y, Hitoshi S, et al. Krüppel-like factor 5 is essential for blastocyst development and the normal self-renewal of mouse ESCs. *Cell Stem Cell*. 2008;3:555–67.
63. Festuccia N, Osorno R, Halbritter F, Karwacki-Neisius V, Navarro P, Colby D, et al. Esrrb is a direct Nanog target gene that can substitute for Nanog function in pluripotent cells. *Cell Stem Cell*. 2012;11:477–90.
64. Martello G, Sugimoto T, Diamanti E, Joshi A, Hannah R, Ohtsuka S, et al. Esrrb is a pivotal target of the Gsk3/Tcf3 axis regulating embryonic stem cell self-renewal. *Cell Stem Cell*. 2012;11:491–504.
65. Tai CI, Ying QL. Gbx2, a LIF/Stat3 target, promotes reprogramming to and retention of the pluripotent ground state. *J Cell Sci*. 2013;126:1093–8.
66. Martello G, Bertone P, Smith A. Identification of the missing pluripotency mediator downstream of leukaemia inhibitory factor. *Embo J*. 2013;32:2561–74.
67. Ye S, Li P, Tong C, Ying Q-L. Embryonic stem cell self-renewal pathways converge on the transcription factor Tfcp2l1. *Embo J*. 2013;32:2548–60.
68. Paling NR, Wheadon H, Bone HK, Welham MJ. Regulation of embryonic stem cell self-renewal by phosphoinositide 3-kinase-dependent signaling. *J Biol Chem*. 2004;279:48063–70.
69. Watanabe S, Umehara H, Murayama K, Okabe M, Kimura T, Nakano T. Activation of Akt signaling is sufficient to maintain pluripotency in mouse and primate embryonic stem cells. *Oncogene*. 2006;25:2697–707.
70. Niswander L, Martin GR. Fgf-4 expression during gastrulation, myogenesis, limb and tooth development in the mouse. *Development*. 1992;114:755–68.
71. Feldman B, Poueymirou W, Papaioannou VE, DeChiara TM, Goldfarb M. Requirement of FGF-4 for postimplantation mouse development. *Science*. 1995;267:246–9.
72. Wilder PJ, Kelly D, Brigman K, Peterson CL, Nowling T, Gao QS, et al. Inactivation of the FGF-4 gene in embryonic stem cells alters the growth and/or the survival of their early differentiated progeny. *Dev Biol*. 1997;192:614–29.
73. Kunath T, Saba-El-Leil MK, Almousailleakh M, Wray J, Melocche S, Smith A. FGF stimulation of the Erk1/2 signalling cascade triggers transition of pluripotent embryonic stem cells from self-renewal to lineage commitment. *Development*. 2007;134:2895–902.
74. Okamoto K, Okazawa H, Okuda A, Sakai M, Muramatsu M, Hamada H. A novel octamer binding transcription factor is differentially expressed in mouse embryonic cells. *Cell*. 1990;60:461–72.
75. Scholer HR, Ruppert S, Suzuki N, Chowdhury K, Gruss P. New type of POU domain in germ line-specific protein Oct-4. *Nature*. 1990;344:435–9.
76. Nichols J, Zevnik B, Anastassiadis K, Niwa H, Klewe-Nebenius D, Chambers I, et al. Formation of pluripotent stem cells in the mammalian embryo depends on the POU transcription factor Oct4. *Cell*. 1998;95:379–91.
77. Niwa H, Masui S, Chambers I, Smith AG, Miyazaki Ji. Phenotypic complementation establishes requirements for specific POU domain and generic transactivation function of Oct-3/4 in embryonic stem cells. *Mol Cell Biol*. 2002;22:1526–36.
78. Niwa H, Toyooka Y, Shimosato D, Strumpf D, Takahashi K, Yagi R, et al. Interaction between Oct3/4 and Cdx2 determines trophectoderm differentiation. *Cell*. 2005;123:917–29.
79. Wood HB, Episkopou V. Comparative expression of the mouse Sox1, Sox2 and Sox3 genes from pre-gastrulation to early somite stages. *Mech Dev*. 1999;86:197–201.
80. Avilion AA, Nicolis SK, Pevny LH, Perez L, Vivian N, Lovell-Badge R. Multipotent cell lineages in early mouse development depend on SOX2 function. *Genes Dev*. 2003;17:126–40.
81. Masui S, Nakatake Y, Toyooka Y, Shimosato D, Yagi R, Takahashi K, et al. Pluripotency governed by Sox2 via regulation of Oct3/4 expression in mouse embryonic stem cells. *Nat Cell Biol*. 2007;9:625–35.
82. Yuan H, Corbi N, Basilico C, Dailey L. Developmental-specific activity of the FGF-4 enhancer requires the synergistic action of Sox2 and Oct-3. *Genes Dev*. 1995;9:2635–45.
83. Loh YH, Wu Q, Chew JL, Vega VB, Zhang W, Chen X, et al. The Oct4 and Nanog transcription network regulates pluripotency in mouse embryonic stem cells. *Nat Genet*. 2006;38:431–40.
84. Mitsui K, Tokuzawa Y, Itoh H, Segawa K, Murakami M, Takahashi K, et al. The homeoprotein Nanog is required for maintenance of pluripotency in mouse epiblast and ES cells. *Cell*. 2003;113:631–42.
85. Silva J, Nichols J, Theunissen TW, Guo G, van Oosten AL, Barrandon O, et al. Nanog is the gateway to the pluripotent ground state. *Cell*. 2009;138:722–37.
86. Sakaki-Yumoto M, Kobayashi C, Sato A, Fujimura S, Matsumoto Y, Takasato M, et al. The murine homolog of SALL4, a causative gene in Okhiro syndrome, is essential for embryonic stem cell proliferation, and cooperates with Sall1 in anorectal, heart, brain and kidney development. *Development*. 2006;133:3005–13.
87. Yuri S, Fujimura S, Nimura K, Takeda N, Toyooka Y, Fujimura Y, et al. Sall4 is essential for stabilization, but not for pluripotency, of embryonic stem cells by repressing aberrant trophectoderm gene expression. *Stem Cells*. 2009;27:796–805.
88. Yamaji M, Seki Y, Kurimoto K, Yabuta Y, Yuasa M, Shigeta M, et al. Critical function of Prdm14 for the establishment of the germ cell lineage in mice. *Nat Genet*. 2008;40:1016–22.
89. Luo J, Sladek R, Bader JA, Matthyssen A, Rossant J, Giguere V. Placental abnormalities in mouse embryos lacking the orphan nuclear receptor ERR-beta. *Nature*. 1997;388:778–82.

90. Fujiwara Y, Chang AN, Williams AM, Orkin SH. Functional overlap of GATA-1 and GATA-2 in primitive hematopoietic development. *Blood*. 2004;103:583–5.
91. Basu P, Lung TK, Lemsaddek W, Sargent TG, Williams DC Jr, Basu M, et al. EKLf and KLF2 have compensatory roles in embryonic beta-globin gene expression and primitive erythropoiesis. *Blood*. 2007;110:3417–25.
92. Sawada A, Kiyonari H, Ukita K, Nishioka N, Imuta Y, Sasaki H. Redundant roles of Tead1 and Tead2 in notochord development and the regulation of cell proliferation and survival. *Mol Cell Biol*. 2008;28:3177–89.
93. Jiang J, Chan YS, Loh YH, Cai J, Tong GQ, Lim CA, et al. A core Klf circuitry regulates self-renewal of embryonic stem cells. *Nat Cell Biol*. 2008;10:353–60.
94. Dunn SJ, Martello G, Yordanov B, Emmott S, Smith AG. Defining an essential transcription factor program for naive pluripotency. *Science*. 2014;344:1156–60.
95. Nichols J, Davidson D, Taga T, Yoshida K, Chambers I, Smith A. Complementary tissue-specific expression of LIF and LIF-receptor mRNAs in early mouse embryogenesis. *Mech Dev*. 1996;57:123–31.
96. Do DV, Ueda J, Messerschmidt DM, Lorthongpanich C, Zhou Y, Feng B, et al. A genetic and developmental pathway from STAT3 to the OCT4-NANOG circuit is essential for maintenance of ICM lineages in vivo. *Genes Dev*. 2013;27:1378–90.
97. Takeda K, Noguchi K, Shi W, Tanaka T, Matsumoto M, Yoshida N, et al. Targeted disruption of the mouse Stat3 gene leads to early embryonic lethality. *Proc Natl Acad Sci USA*. 1997;94:3801–4.
98. Stewart CL, Kaspar P, Brunet LJ, Bhatt H, Gadi I, Kontgen F, et al. Blastocyst implantation depends on maternal expression of leukaemia inhibitory factor. *Nature*. 1992;359:76–9.
99. Li M, Sendtner M, Smith A. Essential function of LIF receptor in motor neurons. *Nature*. 1995;378:724–7.
100. Ware CB, Horowitz MC, Renshaw BR, Hunt JS, Liggitt D, Koblar SA, et al. Targeted disruption of the low-affinity leukemia inhibitory factor receptor gene causes placental, skeletal, neural and metabolic defects and results in perinatal death. *Development*. 1995;121:1283–99.
101. Yoshida K, Taga T, Saito M, Suematsu S, Kumanogoh A, Tanaka T, et al. Targeted disruption of gp130, a common signal transducer for the interleukin 6 family of cytokines, leads to myocardial and hematological disorders. *Proc Natl Acad Sci USA*. 1996;93:407–11.
102. Lopes FL, Desmarais JA, Murphy BD. Embryonic diapause and its regulation. *Reproduction*. 2004;128:669–78.
103. Nichols J, Chambers I, Taga T, Smith A. Physiological rationale for responsiveness of mouse embryonic stem cells to gp130 cytokines. *Development*. 2001;128:2333–9.
104. Itoh N, Ornitz DM. Evolution of the Fgf and Fgfr gene families. *Trends Genet*. 2004;20:563–9.
105. Arman E, Haffner-Krausz R, Chen Y, Heath JK, Lonai P. Targeted disruption of fibroblast growth factor (FGF) receptor 2 suggests a role for FGF signaling in pregastrulation mammalian development. *Proc Natl Acad Sci USA*. 1998;95:5082–7.
106. Kurimoto K, Yabuta Y, Ohinata Y, Ono Y, Uno KD, Yamada RG, et al. An improved single-cell cDNA amplification method for efficient high-density oligonucleotide microarray analysis. *Nucleic Acids Res*. 2006;34:e42.
107. Nichols J, Silva J, Roode M, Smith A. Suppression of Erk signalling promotes ground state pluripotency in the mouse embryo. *Development*. 2009;136:3215–22.
108. Frame S, Cohen P. GSK3 takes centre stage more than 20 years after its discovery. *Biochem J*. 2001;359:1–16.
109. Doble BW, Woodgett JR. GSK-3: tricks of the trade for a multi-tasking kinase. *J Cell Sci*. 2003;116:1175–86.
110. Jope RS, Johnson GV. The glamour and gloom of glycogen synthase kinase-3. *Trends Biochem Sci*. 2004;29:95–102.
111. Meijer L, Flajolet M, Greengard P. Pharmacological inhibitors of glycogen synthase kinase 3. *Trends Pharmacol Sci*. 2004;25:471–80.
112. Wray J, Kalkan T, Gomez-Lopez S, Eckardt D, Cook A, Kemler R, et al. Inhibition of glycogen synthase kinase-3 alleviates Tcf3 repression of the pluripotency network and increases embryonic stem cell resistance to differentiation. *Nat Cell Biol*. 2011;13:838–45.
113. Guo G, Huang Y, Humphreys P, Wang X, Smith A. A Piggy-Bac-based recessive screening method to identify pluripotency regulators. *PLoS One*. 2011;6:e18189.
114. Pereira L, Yi F, Merrill BJ. Repression of Nanog gene transcription by Tcf3 limits embryonic stem cell self-renewal. *Mol Cell Biol*. 2006;26:7479–91.
115. Hoffman JA, Wu CI, Merrill BJ. Tcf711 prepares epiblast cells in the gastrulating mouse embryo for lineage specification. *Development*. 2013;140:1665–75.
116. Sato N, Meijer L, Skaltsounis L, Greengard P, Brivanlou AH. Maintenance of pluripotency in human and mouse embryonic stem cells through activation of Wnt signaling by a pharmacological GSK-3-specific inhibitor. *Nat Med*. 2004;10:55–63.
117. Ogawa K, Nishinakamura R, Iwamatsu Y, Shimosato D, Niwa H. Synergistic action of Wnt and LIF in maintaining pluripotency of mouse ES cells. *Biochem Biophys Res Commun*. 2006;343:159–66.
118. Jho Eh, Zhang T, Domon C, Joo CK, Freund JN, Costantini F. Wnt/ -catenin/Tcf signaling induces the transcription of Axin2, a negative regulator of the signaling pathway. *Mol Cell Biol*. 2002;22:1172–83.
119. ten Berge D, Kurek D, Blauwkamp T, Koole W, Maas A, Eroglu E, et al. Embryonic stem cells require Wnt proteins to prevent differentiation to epiblast stem cells. *Nat Cell Biol*. 2011;13:1070–5.
120. Biechele S, Cockburn K, Lanner F, Cox BJ, Rossant J. Porcine-dependent Wnt signaling is not required prior to mouse gastrulation. *Development*. 2013;40:2961–71.
121. Tang F, Barbacioru C, Bao S, Lee C, Nordman E, Wang X, et al. Tracing the derivation of embryonic stem cells from the inner cell mass by single-cell RNA-Seq analysis. *Cell Stem Cell*. 2010;6:468–78.
122. Boroviak T, Loos R, Bertone P, Smith A, Nichols J. The ability of inner-cell-mass cells to self-renew as embryonic stem cells is acquired following epiblast specification. *Nat Cell Biol*. 2014;16:516–28.
123. Osorno R, Tsakiridis A, Wong F, Cambray N, Economou C, Wilkie R, et al. The developmental dismantling of pluripotency is reversed by ectopic Oct4 expression. *Development*. 2012;139:2288–98.
124. Kojima Y, Kaufman-Francis K, Studdert JB, Steiner KA, Power MD, Loebel DA, et al. The transcriptional and functional properties of mouse epiblast stem cells resemble the anterior primitive streak. *Cell Stem Cell*. 2014;14:107–20.
125. Sumi T, Oki S, Kitajima K, Meno C. Epiblast ground state is controlled by canonical Wnt/beta-catenin signaling in the postimplantation mouse embryo and epiblast stem cells. *PLoS One*. 2013;8:e63378.
126. Kim H, Wu J, Ye S, Tai CI, Zhou X, Yan H, et al. Modulation of beta-catenin function maintains mouse epiblast stem cell and human embryonic stem cell self-renewal. *Nat Commun*. 2013;4:2403.
127. Acampora D, Di Giovannantonio LG, Simeone A. Otx2 is an intrinsic determinant of the embryonic stem cell state and is required for transition to a stable epiblast stem cell condition. *Development*. 2013;140:43–55.

128. Yang SH, Kalkan T, Morrisroe C, Marks H, Stunnenberg H, Smith A, et al. Otx2 and Oct4 drive early enhancer activation during embryonic stem cell transition from naive pluripotency. *Cell Rep.* 2014;7:1968–81.
129. Teo AK, Arnold SJ, Trotter MW, Brown S, Ang LT, Chng Z, et al. Pluripotency factors regulate definitive endoderm specification through eomesodermin. *Genes Dev.* 2011;25:238–50.
130. Yang SH, Kalkan T, Morrisroe C, Smith A, Sharrocks AD. A genome-wide RNAi screen reveals MAP kinase phosphatases as key ERK pathway regulators during embryonic stem cell differentiation. *PLoS Genet.* 2012;8:e1003112.
131. Betschinger J, Nichols J, Dietmann S, Corrin PD, Paddison PJ, Smith A. Exit from pluripotency is gated by intracellular redistribution of the bHLH transcription factor Tfe3. *Cell.* 2013;153:335–47.
132. Leeb M, Dietmann S, Paramor M, Niwa H, Smith A. Genetic exploration of the exit from self-renewal using haploid embryonic stem cells. *Cell Stem Cell.* 2014;14:385–93.
133. Takashima Y, Guo G, Loos R, Nichols J, Ficz G, Krueger F, et al. Resetting transcription factor control circuitry toward ground-state pluripotency in human. *Cell.* 2014;158:1254–69.
134. Theunissen TW, Powell BE, Wang H, Mitalipova M, Faddah DA, Reddy J, et al. Systematic identification of culture conditions for induction and maintenance of naive human pluripotency. *Cell Stem Cell.* 2014;15:471–87.
135. Katz JP, Perreault N, Goldstein BG, Lee CS, Labosky PA, Yang VW, et al. The zinc-finger transcription factor Klf4 is required for terminal differentiation of goblet cells in the colon. *Development.* 2002;129:2619–28.
136. Segre JA, Bauer C, Fuchs E. Klf4 is a transcription factor required for establishing the barrier function of the skin. *Nat Genet.* 1999;22:356–60.
137. Davenport TG, Jerome-Majewska LA, Papaioannou VE. Mammary gland, limb and yolk sac defects in mice lacking Tbx3, the gene mutated in human ulnar mammary syndrome. *Development.* 2003;130:2263–73.
138. Ivanova N, Dobrin R, Lu R, Kotenko I, Levorse J, DeCoste C, et al. Dissecting self-renewal in stem cells with RNA interference. *Nature.* 2006;442:533–8.
139. Zhang J, Tam WL, Tong GQ, Wu Q, Chan HY, Soh BS, et al. Sall4 modulates embryonic stem cell pluripotency and early embryonic development by the transcriptional regulation of Pou5f1. *Nat Cell Biol.* 2006;8:1114–23.
140. Yamaji M, Ueda J, Hayashi K, Ohta H, Yabuta Y, Kurimoto K, et al. PRDM14 ensures naive pluripotency through dual regulation of signaling and epigenetic pathways in mouse embryonic stem cells. *Cell Stem Cell.* 2013;12:368–82.
141. Grabole N, Tischler J, Hackett JA, Kim S, Tang F, Leitch HG, et al. Prdm14 promotes germline fate and naive pluripotency by repressing FGF signalling and DNA methylation. *EMBO Rep.* 2013;14:629–37.
142. Hanna LA, Foreman RK, Tarasenko IA, Kessler DS, Labosky PA. Requirement for Foxd3 in maintaining pluripotent cells of the early mouse embryo. *Genes Dev.* 2002;16:2650–61.
143. Liu Y, Labosky PA. Regulation of embryonic stem cell self-renewal and pluripotency by Foxd3. *Stem Cells.* 2008;26:2475–84.
144. Yu RN, Ito M, Saunders TL, Camper SA, Jameson JL. Role of Ahch in gonadal development and gametogenesis. *Nat Genet.* 1998;20:353–7.
145. Niakan KK, Davis EC, Clipsham RC, Jiang M, Dehart DB, Sulik KK, et al. Novel role for the orphan nuclear receptor Dax1 in embryogenesis, different from steroidogenesis. *Mol Genet Metab.* 2006;88:261–71.
146. Basu P, Morris PE, Haar JL, Wani MA, Lingrel JB, Gaensler KM, et al. KLF2 is essential for primitive erythropoiesis and regulates the human and murine embryonic beta-like globin genes in vivo. *Blood.* 2005;106:2566–71.
147. Wu J, Bohanan CS, Neumann JC, Lingrel JB. KLF2 transcription factor modulates blood vessel maturation through smooth muscle cell migration. *J Biol Chem.* 2008;283:3942–50.
148. Wassarman KM, Lewandoski M, Campbell K, Joyner AL, Rubenstein JL, Martinez S, et al. Specification of the anterior hindbrain and establishment of a normal mid/hindbrain organizer is dependent on Gbx2 gene function. *Development.* 1997;124:2923–34.
149. Yamaguchi Y, Yonemura S, Takada S. Grainyhead-related transcription factor is required for duct maturation in the salivary gland and the kidney of the mouse. *Development.* 2006;133:4737–48.
150. Takeda K, Noguchi K, Shi W, Tanaka T, Matsumoto M, Yoshida N, et al. Targeted disruption of the mouse Stat3 gene leads to early embryonic lethality. *Proc Natl Acad Sci USA.* 1997;94:3801–4.
151. Masui S, Ohtsuka S, Yagi R, Takahashi K, Ko MS, Niwa H. Rex1/Zfp42 is dispensable for pluripotency in mouse ES cells. *BMC Dev Biol.* 2008;8:45.