

Stable isotope evidence for dietary and cultural change over the Holocene at the Sabana de Bogotá region, Northern South America

Miguel Delgado^{1,2}

Received: 9 May 2016 / Accepted: 29 September 2016 / Published online: 8 October 2016
© Springer-Verlag Berlin Heidelberg 2016

Abstract The Sabana de Bogotá in the northern Andes is an interesting region to investigate temporal patterns of dietary variation because it counts with a vast archeological and osteological record for the last 10,000 years. In this paper, stable isotope data of human archeological bone collagen and apatite were used to study the evolution of diet and major subsistence transformations taking place during the Holocene (~9000–600 cal BP). Paleoenvironmental reconstructions and the isotopic ecology of the Sabana de Bogotá were used as an interpretative baseline. Stable isotope measurements ($\delta^{13}\text{C}_{\text{col}}$, $\delta^{13}\text{C}_{\text{ap}}$, $\delta^{15}\text{N}$, and $\Delta^{13}\text{C}_{\text{col-ap}}$) representing hunter-gatherers, horticulturalists, and agriculturalists ($N = 134$ individuals) were analyzed by using bivariate, regression, and discriminant statistical techniques. Results show that early Holocene hunter-gatherers (9000–7000 cal BP) consumed mostly C_3 vegetal resources locally available. In contrast, animal protein was less important. Middle Holocene hunter-gatherers (6000–4500 cal BP) continued with the food foraging pattern observed in the earlier counterparts and presented a slight increase in C_3 animal protein intake. During the initial late Holocene ca. 4000 cal BP, important shifts in subsistence strategies occurred when populations presented a trend toward mixed C_3/C_4 diets, and by ca. 3500 cal BP, there is a clear

signal of C_4 crops (i.e., maize) consumption concomitant with the introduction of ceramic technology. During the final late Holocene (last 2000 cal years BP), intensive agriculture was adopted and humans presented relatively diverse diets integrated by C_4 and C_3 crops, C_3 - C_4 feeding animals, and freshwater resources. Such dietary change coincides with an increase in sociopolitical complexity, population size, and a general decline in health.

Keywords Stable isotopes · Cultural and dietary change · Northern Andes · Holocene

Introduction

The Sabana de Bogotá (SB) in the northern Andes is a region with substantial evidence of major subsistence shifts taking place throughout the Holocene. Traditional conceptions indicated that late Pleistocene/early Holocene hunter-gatherers were specialized groups which relied heavily on large-sized and medium-sized mammals and used a homogeneous and specialized lithic industry named Abriense (Correal and van der Hammen 1977; Correal 1986, 1990a; Hurt et al. 1977; van der Hammen et al. 1990). Despite the fact that reliable evidence of extinct mammals like *proboscidean gomphotheres*, xenarthrans, and American horses has been recovered (e.g., Tibitó), more recent interpretations suggest that generalist foragers with broad spectrum economies inhabited the region during the late Pleistocene, developing throughout the early Holocene diverse subsistence strategies with a strong focus in plants and to a lesser extent in small/medium-sized mammals (e.g., deer, guinea pig among others) (Aceituno et al. 2013; Aceituno and Loaiza 2015; Borrero 2015; Cárdenas 2002; Delgado et al. 2015a,b; Delgado 2015). Reassessments of the radiocarbon chronology along with recent

Electronic supplementary material The online version of this article (doi:10.1007/s12520-016-0403-3) contains supplementary material, which is available to authorized users.

✉ Miguel Delgado
medelgado@fcnym.unlp.edu.ar

¹ División Antropología, Facultad de Ciencias Naturales y Museo, Universidad Nacional de La Plata, Paseo del Bosque s/n. (B1900FWA), La Plata, República Argentina

² Consejo Nacional de Investigaciones Científicas y Técnicas (CONICET), Buenos Aires, República Argentina

technofunctional and bioarchaeological analyses suggest that several groups relying on C₃ resources and with distinct lithic traditions persisted and coexisted over this time span (Aceituno and Rojas 2015; Delgado 2015; Delgado et al. 2015a,b; Nieuwenhuis 2002).

During the middle Holocene non-local forager populations with different settlement patterns, mortuary practices and skeletal morphology arrived in the region (Ardila 1984; Correal and Pinto 1983; Correal 1990b; Delgado 2012a, 2015). Additionally, the appearance of tools for vegetal processing (anvils, scrapers, hammerstones, among others) ca. 5800 cal BP highlights the increasing importance of C₃ plant consumption (Ardila 1984; Correal 1990b). Certain cultigens, such as squash (*Curcubita pepo*), oca (*Oxalis tuberosa*), and *Dioscorea* dated around 4500 cal BP are thought to have been introduced during this period (Ardila 1984; Correal 1990b; Cárdenas 2002). Skeletal and isotopic evidence indicates the presence of abrasive diets and oral pathologies related to higher consumption of non-processed foods, as well as continuity in C₃ plant consumption and changes in C₃ protein sources (Cárdenas 2002; Delgado 2015; Gómez 2012). The increase in temperature/dryness and decrease in rainfall between ca. 7000 and 4500 cal BP caused important ecological changes (i.e., reduction of water tables, habitat fragmentation, etc.), which promoted multiple changes in hunter-gatherer populations such as demographic contraction, population extinction, and dispersals (Delgado 2012a, 2015).

The initial late Holocene period is central for our understanding of the adoption of agriculture given that important changes in subsistence, demography, and food processing technology occurred along with strong phenotypic diversification (Ardila 1984; Botiva 1989; Correal and van der Hammen 1977; Correal and Pinto 1983; Correal 1990b; Delgado 2012a,b, 2015; Rodríguez and Colantonio 2015). The isotopic evidence reveals diverse dietary patterns (C₃, C₃/C₄, and C₄), which likely suggest that a change toward a food production system likely began during that time (Cárdenas 2002; Delgado 2015; van der Hammen et al. 1990). This is supported by the extensive archaeobotanical evidence recovered from Aguazuque and Zipacón (ca. 4000/3500 cal BP), which reveals that local populations were already consuming several C₃ and C₄ domesticated plants by that time period (Correal and Pinto 1983; Correal 1990b). Analyses of multiple bioarchaeological indicators suggest a reduction in food consistence, an increase in carbohydrates and silica-rich plant consumption, a higher biological stress, population contacts/conflicts, and an increase in population size (Delgado 2012a, 2015; Gómez 2012; Rodríguez 2006). The zooarchaeological and isotopic record suggests a slight increase in animal protein consumption and a diversification of animal resources (Correal and Pinto 1983; Correal 1990b; Cárdenas 2002; Delgado 2015).

During the final late Holocene, the archeological evidence suggests that the most remarkable dietary change occurred after 2000 cal BP, when people consumed considerably more tropical plants (primarily, but not exclusively, maize) and animal protein. For the last 1100 cal BP, during a period named Muisca, divided into early (1000–700 cal BP) and late (700–400 cal BP), the archaeobotanical and isotopic record, along with ethnohistorical accounts (restricted to the late period), stresses the importance of several cultigens (e.g., highland tubercles, tropical grains, fruits, and palms) and diverse C₃-C₄ animal protein sources, including those from freshwater ecosystems (Delgado et al. 2014; Enciso 1996; García 2012; Langebaek 1987; Morcote 1996; Parra 2001; Simón 1981 [1625]). The skeletal evidence further supports the dietary change as revealed by the increase in both occlusal dental wear and the presence of certain pathologies indicating a very high consumption of highly processed carbohydrates, iron deficiency, and physiological stress (Delgado 2015; Martínez 2012; Rodríguez 2006).

As noted above, the major subsistence and dietary transformations in the study region have been addressed by using distinct archeological indicators. While stable isotopes, which provide quantitative dietary information at the individual level, have been used in previous studies of the region, an analysis by using a broad chronological and comparative approach has never been undertaken. Therefore, the aim of the present study is to investigate the main dietary/subsistence changes which occurred in Sabana de Bogotá throughout the Holocene (ca. 9000 to 600 cal BP) by using stable isotopes of the bone collagen and apatite derived from human archeological samples.

Samples and techniques

Currently, stable isotope analysis is a well-established technique widely used for reconstructing diet in distinct spatial and temporal contexts. While not shown to be specific for the area of this study, a common range in $\delta^{13}\text{C}$ for C₃/C₄ plants consumed by humans is from -24 to -10 ‰ (-14 ‰), with each per mil more positive than -24 ‰ representing about 7 % maize (or other C₄ plant) in the overall diet (Katzenberg 2008; Schoeninger 2009; Tykot 2004). Bone collagen and bone apatite have resorption rates estimated at 7–10 years or more, so that isotopic analyses of adult bones provide the average diet for many years prior to death (Tykot 2006, 2014). Bone collagen $\delta^{13}\text{C}$ is metabolically enriched about $+5$ ‰ relative to diet. It is known that while bone collagen is disproportionately produced from the protein portion of the diet, bone apatite is produced from a mixture of dietary protein, carbohydrates, and fats (lipids) (Price and Burton 2011; Tykot 2004). The diet-apatite spacing differs according to the model used and varies according to the C₃ and C₄

components of the diet. Under a model of +12 ‰ for C₃/C₄ dietary components, the value for mono-isotopic diets is 7.0 ‰, for C₃ protein/C₄ total diet is >7.0 ‰, and for C₄ total diet/C₃ protein is <7.0 ‰ (Tykot et al. 2009). Stable carbon isotope analysis of both bone collagen and apatite thus permits quantitative estimates of several dietary components. Estimating the percentage of C₄ plants in human diet is straightforward for herbivores and human agriculturalists, if seafood was not available and animals were not consuming wild C₄ grasses, by simple interpolation between the endpoints of bone apatite for a pure C₃-based diet vs. a pure C₄-based diet (Kellner and Schoeninger 2007). Nitrogen isotopes generally reflect trophic-level differences between plants and herbivores, and especially in multilevel aquatic systems, so that the combination of N and C (both collagen and apatite) isotope values allows discrimination between these resource groups.

The available regional dataset includes 134 stable isotope measurements ($\delta^{13}\text{C}_{\text{col}}$, $\delta^{13}\text{C}_{\text{ap}}$, $\delta^{15}\text{N}$, and $\Delta^{13}\text{C}_{\text{col-ap}}$), which were compiled from published sources (Aufderheide 1990; Correal 1990b; Cárdenas 1993, 1996, 2002; Delgado et al. 2014; Rodríguez and Cifuentes 2005; Rodríguez 2011; van der Hammen et al. 1990). Such data represent adult/adolescent (male and female) individuals recovered from several archeological sites distributed in the SB region (Table 1, Fig. 1). Supplementary Table 1 details the isotope data and sample composition investigated here. Five main chronological/economic groups were studied (see Table 1) taking into account contextual archeological and chronological information. This includes early (~9000–7000 cal BP) and mid-Holocene (~6000–4500 cal BP) hunter-gatherers, initial late Holocene horticulturalists (~3800–2200 cal BP), and final late

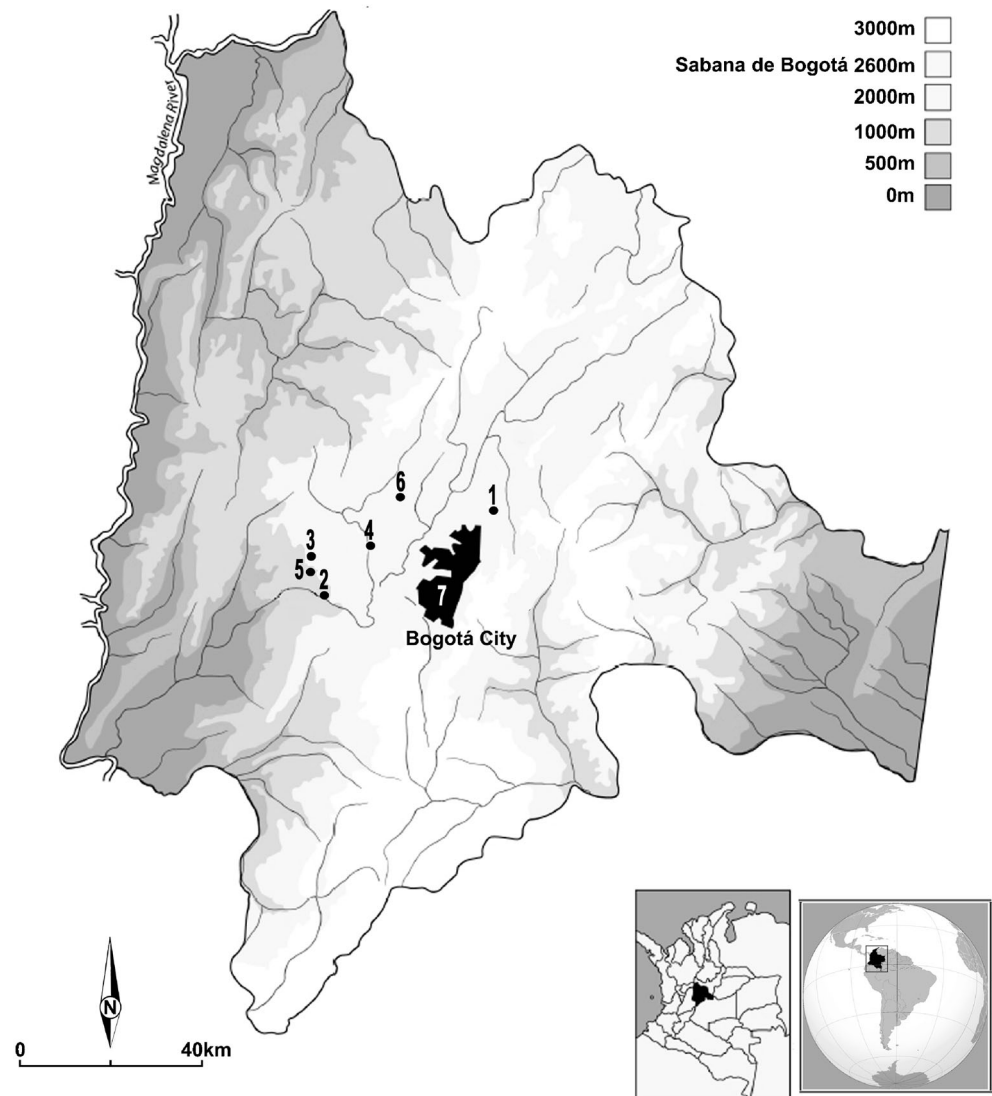
Holocene agriculturalists from the early (~1015–800 cal BP) and late Muisca (~700–690 cal BP) periods. Despite the presence of some chronological overlapping between the early and late Muisca samples investigated, especially between the upper and lower temporal ranges, such division may shed interesting information regarding dietary diversity during the Muisca period. Radiocarbon dates were calibrated (2σ) by using the IntCal13 curve on the CALIB program v. 7.0.4 (Stuiver and Reimer 1993). General trends were investigated through bivariate comparisons, plots of temporal dispersion, and mean differences ($p < 0.05$). The regression model proposed by Kellner and Schoeninger (2007) was used to obtain information on diet, dietary energy, and protein sources. Plots of $\delta^{13}\text{C}_{\text{col}}$ against $\delta^{13}\text{C}_{\text{ap}}$ provide a model of three regression lines (C₃, C₄, and marine diet protein) where the position on each line indicates the energy source (C₃, C₄, or mixed). In addition, the multivariate statistical approach proposed by Froehle et al. (2012), which includes not only carbon isotopes from bone collagen (of $\delta^{13}\text{C}_{\text{col}}$) and apatite (of $\delta^{13}\text{C}_{\text{ap}}$) but also from nitrogen ($\delta^{15}\text{N}_{\text{col}}$), was used to distinguish dietary groups more clearly. In order to determine the optimal number of clusters in the dataset, a k-means cluster analysis was performed. Once the most realistic number of groups was determined, a discriminant function analysis (DFA) was carried out in order to obtain significant linear functions and to identify variables that explain the multivariate distribution of individual points and centroids. The analyzed dataset meets the assumptions of multivariate normality within groups and equality of covariance matrices among groups. The statistical and graphical analyses were performed in Systat 13 for windows, Statistica 7.0 Statsoft Inc., and the free R software (R Core Team 2015).

Table 1 Samples analyzed by chronology, archeological site, and number of measurements per isotope

Sample	Chronology	Site	$\delta^{15}\text{N}_{\text{col}}/$ $\delta^{13}\text{C}_{\text{col}}$	$\delta^{13}\text{C}_{\text{ap}}/$ $\Delta^{13}\text{C}_{\text{col-ap}}$	Reference
Early/middle Holocene (EMH)	9000–7000 cal BP	Checu Galindo La Floresta ^a Potreroalto Tequendama	16	11	Cárdenas (2002), Rodríguez (2011), van der Hammen et al. (1990)
Middle Holocene (MH)	6000–4500 cal BP	Aguazuque	16	7	Aufderheide (1990), Cárdenas (2002), van der Hammen et al. (1990)
Initial late Holocene (ILH)	3800–2200 cal BP	Aguazuque Madrid Tequendama	9	2	Aufderheide (1990), Cárdenas (2002), Rodríguez and Cifuentes (2005), van der Hammen et al. (1990)
Final late Holocene early Muisca	1015–800 cal BP	Las Delicias Tibanica	66	66	Cárdenas (1993), Delgado et al. (2014)
Final late Holocene late Muisca	700–690 cal BP	Candelaria Portalegre	27	27	Cárdenas (1996, 2002)
Total			134	113	

^a La Floresta site is located in the Department of Boyacá but belongs to the cultural region integrated by the departments of Cundinamarca and Boyacá named Altiplano Cundiboyacense

Fig. 1 The Sabana de Bogotá region showing the location of archeological sites with human and faunal skeletal remains investigated. Checua (1), Tequendama (2), Potreroalto (3), Galindo (4), Aguazuque (5), Madrid (6), final late Holocene Muisca settlements (Portalegre, Las Delicias, Candelaria, Tibanica) (7)



Paleoenvironmental reconstruction and the regional isotopic ecology

Holocene environmental evolution

Based on palynological, glaciomorphological, isotopic, and diatom evidence, detailed reconstructions of the predominant environmental conditions have been performed for the SB region for the last 13,000 years (Fig. 2). At the El Abra stadial (ca. 12,900–11,800/10,900 cal BP), the regional equivalent to the Younger Dryas Chronozone, the climate was very cold, with inferred temperatures between 4 to 6 °C lower than today according to pollen data (van der Hammen and Hooghiemstra 1995) or 3 °C lower than today in accordance to $\delta^{13}\text{C}$ data derived from soil organic matter (SOM) samples (Boom et al. 2001; Mora and Pratt 2002). Biome reconstructions revealed a dominance of the cool grassland-shrub biome (Marchant et al. 2002). Around 11,500 cal BP, the climate ameliorated again, with a sudden rise

in the average annual temperature (van der Hammen 1992). The biome reconstructions for the 10,800–9500 cal BP interval revealed that there was a remarkable expansion of mesic biomes, which indicates a warm and wet period (Marchant et al. 2002). Between ca. 8300 cal BP and ca. 6800/5800 cal BP, the record shows vegetation changes, fluctuations in precipitations and temperature with a tendency to dry environments, and the subsequent decrease of water tables (Fig. 2) (Gómez et al. 2007; Vélez et al. 2006). Biome reconstructions suggest a marked increase of the cool mixed forest biome (Marchant et al. 2002). Between 5800 and 3800 cal BP, the paleoenvironmental record suggests an increase in temperature (± 2 °C) and a decrease in precipitation, which caused a particularly dry period. After the 2500 cal BP, climatic conditions became similar to what we know today (Fig. 2). Pollen and sediment records suggest a high degree of precipitation (reflected by an increase of marshy herbaceous vegetation and open water) as well as intensive human occupation shown by deforestation (*Quercus* in particular). In addition, pollen

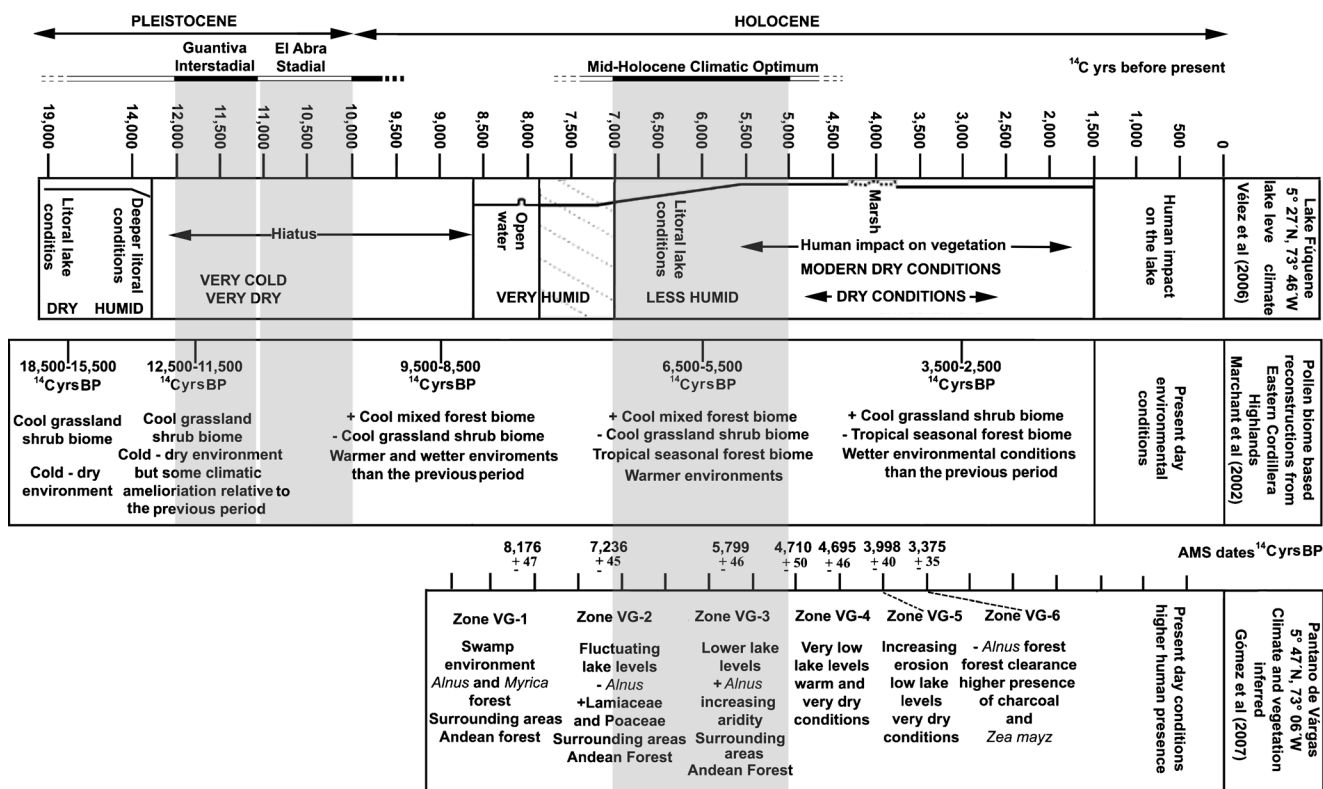


Fig. 2 Climatic-vegetation evolution and biome reconstructions for the Sabana de Bogotá region for the last 19,000 ¹⁴C years on the basis of palynological, glaciomorphological, and diatom evidence (adapted from

Delgado 2012a). Pantano de Vargas pollen zone (Zone VG). The gray bars shows the chronological position of the Guantiva interstadial, El Abra stadial, and the mid-Holocene climatic optimum

data suggest lowering of water tables and increasing disturbance probably caused by erosion (presence of *Amaranthaceae/Chenopodiaceae, Borreria, and Dodonaea*), crop cultivation (presence of *Zea mays*), and frequent fires (as shown by the high amounts of charcoal in the sediments) (Gómez et al. 2007; Vélez et al. 2006). Biome reconstructions revealed an increase in the cool grassland-shrub biome (Marchant et al. 2002).

Establishing the menu: the regional isotopic ecology

Stable isotope data provide reliable quantitative information on diet at the individual level but requires an interpretative context with respect to the potential resources that may have been consumed. Such context is termed isotopic ecology, and it is useful to define the regional dietary spectrum. Regarding vegetal resources, we can obtain some information from isotope-based paleoenvironmental research on the Holocenic altitudinal expansion of wild C₄ vegetation (Boom et al. 2001; Guillet et al. 1988; Mora and Pratt 2002) and from previous human stable isotope studies (Cárdenas 1993, 1996, 2002; Delgado et al. 2014). According to paleoenvironmental studies, elevated δ¹³C values ranging from −9 to −15‰ within the Andean/sub-Andean forests and moorland vegetation belts are indicative of the presence of C₄ and CAM plants during different moments of the Holocene (supplementary Table 2). For the early/mid-Holocene, some authors hypothesized that the presence of mixed C₃/C₄ vegetation

can be explained by the expansion of lowland C₄ grasses caused by lower partial atmospheric CO₂ pressure (pCO₂), reduced rainfall, and temperature fluctuations related to rapid climatic changes, whereas human-induced deforestation and/or cultivation of C₄ crops (maize mainly) and environmental rearrangements could explain the presence of C₄ vegetation in the late Holocene (Boom et al. 2001; Guillet et al. 1988; Mora and Pratt 2002). With regard to maize consumption, previous studies on Muisca human skeletal remains (Cárdenas 1993, 1996, 2002; Delgado et al. 2014) suggest that carbon values ranging from −12.8 to −9.7‰ likely correspond with a maize-based diet. Isotopic data derived from Native American skeletons from the colonial period suggest that values averaging −9.7‰ or higher are indicative of diets based mostly on maize consumption (Cárdenas 2002; Delgado 2007). Although the isotopic research on faunal material is scarce, it has allowed us to make some inferences although restricted to the late Holocene (Table 2; Delgado et al. 2014). As expected, carbon isotopes of two deer samples (*Odocoileus virginianus*) reflect a C₃ diet, which likely reveals intra-specific differences. However, when compared to fossil and experimental evidence (Emery et al. 2000; Kohn et al. 2005), they seem to have been enriched. Carbon enrichment is more evident in the guinea pig and rabbit samples (Table 2), whose values resemble a C₃/C₄ diet. Despite the fact that human influence may have been a factor, especially for *cavia* given its probable domestication date established at ca.3500–2600 cal BP (Correal and Pinto 1983;

Table 2 Stable isotope measurements for faunal samples from the Sabana de Bogotá region (data from Delgado et al. 2014)

Lab code	Species	$\delta^{13}\text{C}_{\text{col}}$	$\delta^{15}\text{N}_{\text{col}}$	$\delta^{13}\text{C}_{\text{ap}}$	$\Delta^{13}\text{C}_{\text{col-ap}}$	C/N
USF 14628	<i>Odocoileus virginianus</i>	-18.6	7.8	-12.1	6.6	3.2
USF 14629	<i>Odocoileus virginianus</i>	-19.1	6.0	-10	9.1	3.4
USF 14633	<i>Cavia porcellus</i>	-16.6	7.3	-9.7	6.9	3.4
USF 14634	<i>Sylvilagus brasiliensis</i>	-17.0	9.6	-8.9	8.1	3.5
USF 14632	<i>Leopardus wiedii</i>	-16.1	8.8	-11	5.1	3.3
USF 14630	<i>Canis familiaris</i>	-16.9	9.4	-11.1	5.8	3.4
USF 14631	<i>Dendrocygna autumnalis</i>	-24.1	7.9	-14.2	10.0	3.3

Ijzereef 1978), similar values in rabbit and the detection of C_4 and CAM plants in the study region during the late Holocene likely indicate the consumption of C_4 wild grasses by these animals. The high nitrogen value found in the rabbit sample is not in line with their feeding habits and local ecology as they can only get nitrogen from the plants they consume. Nitrogen data from carnivorous species such as dog (*Canis familiaris*) and margay (*Leopardus wiedii*) revealed their higher trophic position within the local terrestrial food web. Carbon values resembling a C_4 diet can be explained by the omnivorous dietary profile of dog and/or human influence and a wide geographic range and feeding behavior for margay, which includes small/medium-sized mammals and birds that inhabit both the tropical lowlands and Andean highlands. Finally, data for a duck species (*Dendrocygna autumnalis*) reveal a C_3 diet complemented with freshwater resources (e.g., mollusks), which indicates highland open water habitats (Moreano 2011).

Results

Univariate and bivariate comparisons

In Tables 3, 4, and 5 and Figs. 3 and 4, the main chronological/economic trends for the groups under study are presented. By the early Holocene, the low $\delta^{13}\text{C}_{\text{col}}$ values indicate a high dependence on C_3 plants. In addition, one

individual presented a mixed C_3/C_4 diet (see Figs. 3a and 4a). Nitrogen isotope ratios (Figs. 3a, b and 4b) revealed two subgroups with low and mean values, respectively, which suggests the presence of distinct protein sources (C_3 plants and several C_3 -feeding animals) at that time. During the middle Holocene, people continued consuming basically C_3 plants and there is also a certain increase in nitrogen, which reflects higher consumption of C_3 -consuming animals and likely freshwater resources. Early and mid-Holocene samples did not present significant differences in their diets (Tables 4 and 5). The carbon isotope data for the initial late Holocene show some changes regarding previous periods, since while some individuals maintained a C_3 dietary profile, others presented either mixed C_3/C_4 or C_4 diets. During this time, the slight increase in nitrogen reveals changes in protein sources and/or increase in protein consumption. This trend is reinforced by the *t* test revealing further differences in carbon (collagen) and nitrogen (Tables 4 and 5) with other time periods. For the final late Holocene, there was a clear C_4 signal indicating more reliance on tropical crops, primarily maize along with other C_3 and C_4 plants. There is also a considerable increase in nitrogen and apatite values (Figs. 3 and 4b, c), which indicates a period of higher consumption of C_3 - C_4 animals and freshwater resources. Interestingly, some differences emerged when the early and late Muisca samples were compared such as the higher protein consumption during the late period (Figs. 3 and 4 and Tables 3, 4, and 5). Furthermore,

Table 3 Stable isotope summary statistics for the chronological/economic groups analyzed from the Sabana de Bogotá

Sample	$\delta^{13}\text{C}_{\text{col}}$	SD	Range	$\delta^{13}\text{C}_{\text{ap}}$	SD	Range	$\delta^{15}\text{N}_{\text{col}}$	SD	Range	$\Delta^{13}\text{C}_{\text{col-ap}}$	SD	Range
EMH ^a	-20.0	0.49	-20.6–18.8	-14.0	1.75	-16.3–11.75	7.84	1.42	5.6–10.0	6.1	1.71	4.1–8.3
MH ^b	-19.7	0.52	-20.6–18.3	-14.5	0.82	-15.5–12.9	8.58	1.31	6.3–11.2	5.5	1.1	4.4–7.4
ILH ^c	-15.2	3.9	-20.2–10.4	-14.7	0.59	-15.1–14.2	8.83	0.94	7.12–9.9	5.4	0.61	5.0–5.8
FLHEM ^d	-11.8	1.32	-15.8–8.4	-8.4	3.31	-16.3–4.1	9.4	0.67	8.2–10.4	5.0	0.89	3.2–8.3
FLHLM ^e	-11.7	1.22	-13.9–9.3	-7.2	1.0	-8.9–5.1	10.3	1.04	8.4–12.1	4.5	0.70	3.2–6.2

^a EMH: early/middle Holocene hunter-gatherers

^b MH: middle Holocene hunter-gatherers

^c ILH: initial late Holocene hunter-gatherers/horticulturalists

^d FLHEM: final late Holocene agriculturalists from the Early Muisca period

^e FLHLM: final late Holocene agriculturalists from the Late Muisca period

Table 4 *t* test values and statistical significance for inter-sample mean comparisons for $\delta^{13}\text{C}_{\text{col}}$ (below of the diagonal) and $\delta^{13}\text{C}_{\text{ap}}$ (above of the diagonal)

	EMH	MH	ILH	FLHEM	FLHLM
EMH	0	0.09	0.49	-19.4***	-14.1***
MH	-1.31	0	0.26	-20.1***	-17.7***
ILH	-4.70*	-4.60*	0	-11.2***	-10.3***
FLHEM	-24.1*	-22.5*	-5.3*	0	2.00**
FLHLM	-24.9*	-23.8*	-4.0*	-0.23	0

* $p \leq 0.001$, significant differences for $\delta^{13}\text{C}_{\text{col}}$

** $p \leq 0.005$, significant differences for $\delta^{13}\text{C}_{\text{ap}}$

*** $p \leq 0.001$, significant differences for $\delta^{13}\text{C}_{\text{ap}}$

the diet-apatite spacing values (Fig. 4d) suggest diets integrated by C_3 carbohydrates and C_3 protein sources during the early and middle Holocene, C_4 carbohydrates and C_3 protein during the initial late Holocene, and C_4 carbohydrates and C_3 - C_4 protein by the final late Holocene.

Regression analysis

Figure 5 illustrates the results of Kellner and Schoeninger's (2007) model. Individuals varied substantially in their source of dietary energy and dietary protein over time, with opposite patterns during the final late Holocene and the early/mid-Holocene. As indicated by the model, while most final late Holocene individuals show a strong emphasis on C_4 dietary energy sources, some late individuals fall near the C_4 line, albeit their position is closer to mixed C_3/C_4 dietary energy. At least one individual presented exclusively a C_3 protein source. The regression results are consistent with the bivariate comparisons and the *t* test since they revealed slight differences between the early and late Muisca periods in carbon isotopes. Overall, the data corresponding to the final late Holocene showed that 50–70 % of dietary protein and dietary energy came from C_4 sources. Early and mid-Holocene hunter-gatherers fall along

Table 5 *t* test values and statistical significance for inter-sample mean comparisons for $\delta^{15}\text{N}_{\text{col}}$ (below of the diagonal) and $\Delta^{13}\text{C}_{\text{col-ap}}$ (above of the diagonal)

	EMH	MH	ILH	FLHEM	FLHLM
EMH	0	0.74	0.06	2.88**	3.86***
MH	-1.38	0	0.06	1.26	2.93**
ILH	-1.83	-0.51	0	0.63	1.80
FLHEM	-7.1*	-3.86*	-2.85*	0	-2.70**
FLHLM	-6.57*	-4.73*	2.68*	5.7*	0

* $p \leq 0.001$, significant differences for $\delta^{15}\text{N}_{\text{col}}$

** $p \leq 0.005$, significant differences for $\Delta^{13}\text{C}_{\text{col-ap}}$

*** $p \leq 0.001$, significant differences for $\Delta^{13}\text{C}_{\text{col-ap}}$

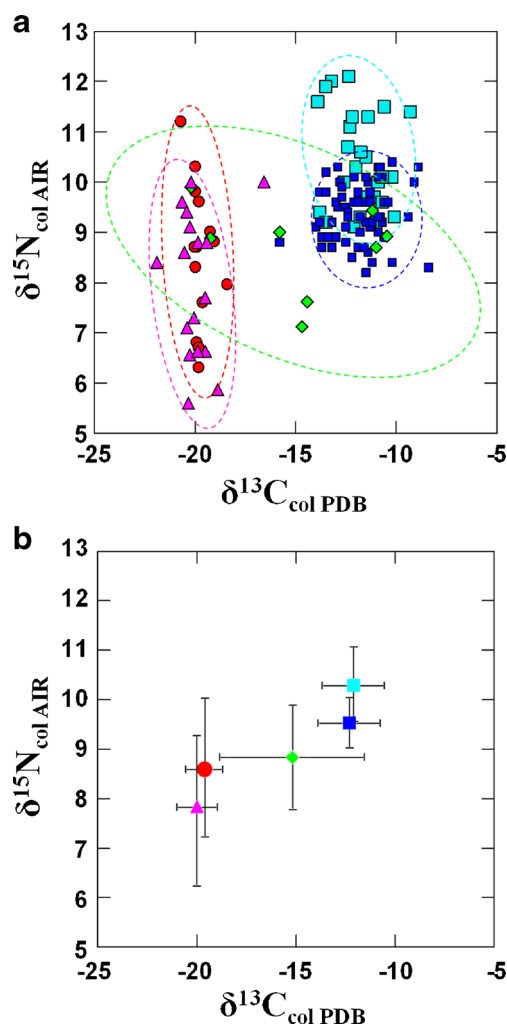


Fig. 3 $\delta^{13}\text{C}_{\text{col}}$ plotted against $\delta^{15}\text{N}_{\text{col}}$ from Sabana de Bogotá human samples for four chronological samples: early Holocene hunter-gatherers (triangles), middle Holocene hunter-gatherers (circles), initial late Holocene hunter-gatherers/horticulturalists (diamonds), and final late Holocene agriculturalists (squares). **a** Individual data points and **b** mean values ± 1 standard deviation. Ninety-five percent confidence ellipses for each chronological group are shown

the C_3 protein line with no or few C_4 signal, except for one individual showing mixed C_3/C_4 protein sources. With the exception of the aforementioned outlier, about 80–100 % of their dietary energy came from C_3 sources. In addition, isotope data for the first 5000 years of the Holocene show homogeneous dietary sources and relatively diverse energy sources. Although the initial late Holocene sample is underrepresented, the two samples analyzed here have similar values to those from the early and mid-Holocene, which suggest similar C_3 dietary and energy sources. In general, the temporal spread of the data reveals variability in dietary protein and dietary energy composition over the Holocene in the study region, with an emphasis on C_3 protein/energy sources during the early and middle Holocene and C_4 protein/energy sources during the initial and final late Holocene.

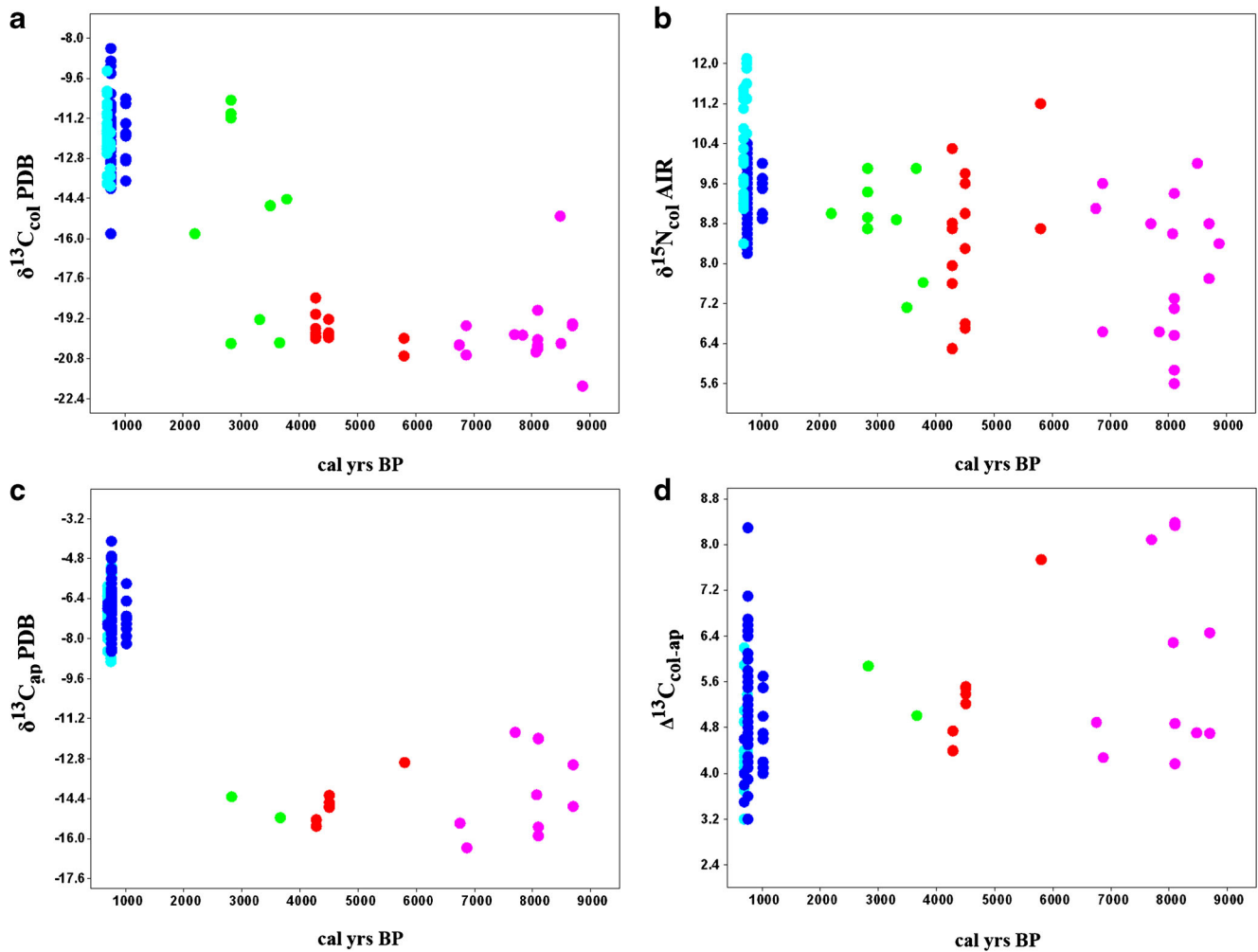


Fig. 4 Scatterplots of four stable isotopes against chronology ranging between 9000 and 500 cal BP for human samples from the Sabana de Bogotá region. **a** $\delta^{13}\text{C}_{\text{col}}$, **b** $\delta^{15}\text{N}_{\text{col}}$, **c** $\delta^{13}\text{C}_{\text{ap}}$, and **d** $\Delta^{13}\text{C}_{\text{col-ap}}$. Color codes as in Fig. 3

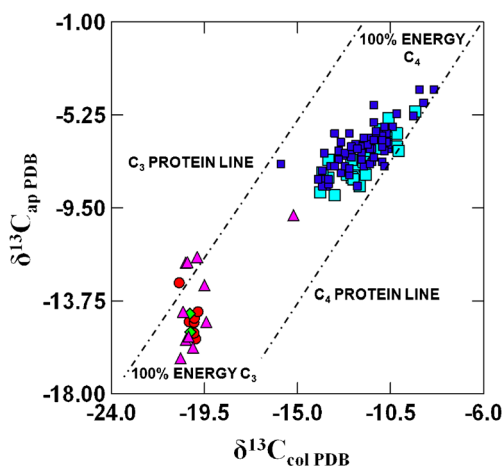


Fig. 5 $\delta^{13}\text{C}_{\text{col}}$ plotted against $\delta^{13}\text{C}_{\text{ap}}$ for five chronological samples from the Sabana de Bogotá region according to the regression model of Kellner and Schoeninger (2007). Early Holocene hunter-gatherers (triangles), middle Holocene hunter-gatherers (circles), initial late Holocene hunter-gatherers/horticulturalists (diamonds), and final late Holocene agriculturalists (squares). Color codes as in Fig. 3

Multivariate analysis

The results of the DFA are presented in Tables 6 and 7 and Fig. 6. The k-means cluster analysis revealed the existence of four main clusters with distinct multivariate dietary profiles. Only linear functions with higher variance and canonical correlations were interpreted (i.e., functions 1 and 2 = 99.8 % of the total variance). The structure analysis showed that carbon isotope variables have the heaviest influence on function 1, while nitrogen exerted its strongest effect on function 2 (Table 6). The classification analysis based on posterior probabilities and inter-individual Mahalanobis distances (D^2) revealed a very good correspondence between the observed and predicted isotope-based classification (only 0.07 % incorrect classifications). The four clusters are plotted in Fig. 6, both as individual data points (a) and multivariate centroids (b). Function 1 clearly differentiates between clusters with low (negative scores) and high (positive scores) carbon values. Clusters

Table 6 Function eigenvalues and structure matrix

Function	Eigenvalue	% of variance	Cumulative %	Canonical correlation	Structure analysis		
					$\delta^{13}\text{C}_{\text{apatite}}$	$\delta^{13}\text{C}_{\text{collagen}}$	$\delta^{15}\text{N}_{\text{collagen}}$
1	8.92	85.8	85.8	0.948	0.907*	0.882*	0.173
2	1.46	14.3	99.8	0.771	-0.273	-0.035	0.907*
3	0.01	0.2	100	0.125	-0.318	0.468	-0.384

* $p \leq 0.01$, significant canonical coefficients

1 (circles) and 2 (squares) are markedly different from clusters 3 (diamonds) and 4 (triangles). This distinction has economic sense, since clusters 1 and 2 correspond to hunter-gatherers from the early, middle, and initial late Holocene and clusters 3 and 4 correspond to final late Holocene agriculturalists. Function 2 allows us to distinguish between clusters with low (negative scores) and high (positive scores) nitrogen values. This differentiation can be explained in temporal terms since cluster 1 corresponds to early Holocene hunter-gatherers with low nitrogen values and cluster 2 comprises middle and initial late Holocene hunter-gatherers with high values. The distinction between clusters 3 and 4 based on function 2 (nitrogen) supports the bivariate results (Fig. 3; Tables 4 and 5) suggesting that people from the late Muisca period consumed higher amounts of protein than their early counterparts. Overall, the multivariate model suggests that early and middle Holocene foragers presented ca. 100 % of C_3 diets and ≥ 65 % of C_3 protein sources, while final late Holocene agriculturalists presented 70 % of C_4 diets and ~ 50 % of C_4 protein sources. The high positive scores of some individuals along function 2 suggest either the presence of marine protein (see Somerville and Froehle 2011) or a strong focus on local freshwater fauna. Alternatively, the elevated nitrogen values could be at least partly attributed to the use of animal fertilizers, burning of vegetation, and/or land management by the final late Holocene societies (see Szpak 2014). Finally, Table 7 presents the matrix of D^2 distances between the four dietary clusters, which revealed significant differences between clusters 1–2 and 3–4 but not between 1 and 2 or between 3 and 4. This suggests that, in dietary

Table 7 Matrix of square Mahalanobis distances among clusters (below of the diagonal D^2 values and above of the diagonal F values^a)

Group	Cluster 1	Cluster 2	Cluster 3	Cluster 4
Cluster 1	0	17.4	134.5	156.5
Cluster 2	11.48	0	196.2	181.7
Cluster 3	59.31*	66.10*	0	35.24
Cluster 4	71.48*	64.10*	4.69	0

^a F values = 3.1 d.f.

* $p \leq 0.001$, significant differences

terms, cluster 1 (low carbon/low nitrogen), representing early Holocene hunter-gatherers, is similar to cluster 2 (low carbon/high nitrogen), which includes mid and initial late Holocene hunter-gatherers/horticulturalists. Additionally, clusters 1 and 2 are markedly different from clusters 3 (high carbon/low nitrogen) and 4 (high carbon/high nitrogen), which correspond to final late Holocene agriculturalists from the early and late Muisca period, respectively.

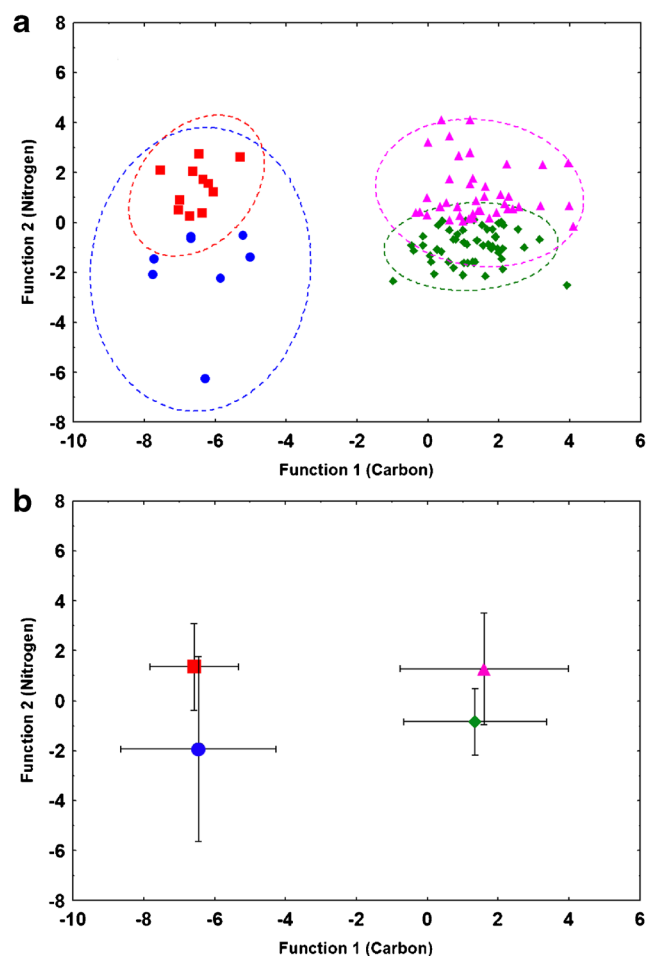


Fig. 6 Discriminant function scores plotted by cluster representing four multivariate dietary profiles as established by the discriminant function analysis. Cluster 1 (circles), cluster 2 (squares), cluster 3 (diamonds), and cluster 4 (triangles). **a** Individual data points and **b** multivariate centroids. Error bands extend to 2σ of the centroids. Ninety-five percent confidence ellipses for each cluster are shown

Discussion: subsistence and dietary trends at the Sabana de Bogotá

The isotopic evidence presented above revealed an important transformation in diet and subsistence at the SB region over time, which can only be assessed on wide archeological time-scales (i.e., millennia). Here, the dietary/subsistence trends are addressed by temporal blocks roughly corresponding to periods of remarkable cultural change in the study region.

Early Holocene (ca. 9000–7000 cal BP)

Past interpretations on SB early hunter-gatherer subsistence indicated dietary specializations (Correal and van der Hammen 1977; Correal 1986; Hurt et al. 1977; van der Hammen et al. 1990), while recent studies tend to stress more generalized diets and economies (Aceituno and Loaiza 2015; Borrero 2015; Cárdenas 2002; Delgado 2015; Piperno and Pearsall 1998). Much of the subsistence specialization (i.e., hunting) was inferred from the lithic assemblages; however, the most important and ubiquitous late Pleistocene/early Holocene regional lithic industry (i.e., Abriense) is not a bifacial technology but a very simple, versatile, and multifunctional unifacial technology that reflects environmental constraints rather than specializations (Delgado 2012a). Recent technofunctional analysis revealed the existence of broad spectrum economies with a strong focus on vegetal resources (Nieuwenhuis 1998, 2002). The isotopic results presented here are in agreement with the recent interpretations of the lithic repertoire indicating that early Holocene forager diets were mostly integrated by C_3 plants. Although animal protein was less important, it should be noted that this protein came from diverse C_3 sources, which, in turn, indicates flexibility in resource acquisition. The multivariate and regression analyses (Figs. 5 and 6; Table 6) strongly support this interpretation as about 80–100 % of the dietary energy of early hunter-gatherers came from C_3 vegetal sources. In addition, the temporal dispersion of nitrogen and diet-apatite spacing (Fig. 4b, d) stress that C_3 animal protein was also a relatively important dietary component for some early foragers. This pattern is supported by distinct lines of evidence. For example, the archaeobotanical and lithic evidence highlights the importance of roots, tubercles, and seeds (Cárdenas 2002; Correal and van der Hammen 1977; Nieuwenhuis 2002), and the zooarchaeological record points to deer, guinea pigs, and other small mammals as the main animal protein sources (Ijzereef 1978; Peña and Pinto 1996). Bioarchaeological evidence indicates abrasive diets and oral pathologies related to the high consumption of minimally processed foods (Delgado 2015; Gómez 2012). On the one hand, all this evidence indicates that gathering was more important than hunting. On the other, however, there was more dietary diversity than previously

assumed, which leads to the hypothesis of non-specialized economies for early Holocene foragers.

The early Holocene was a period without marked environmental changes in the SB region (Fig. 2). Likewise, aside from a slight increase in carbon (collagen) and nitrogen during the middle Holocene, the isotopic record shows overall relative dietary stability between 9000 and 4500 cal BP, which means that few significant changes occurred over millennia in connection with subsistence (Fig. 4; Tables 4 and 5). However, individual data also suggest some interesting issues, especially regarding mobility and the arrival of non-local populations. The most conspicuous finding is the different dietary profile of an early Holocene individual from Galindo site (Pinto 2003) dated to 7730 ± 60 BP (GrN-16345) (8508 cal BP range 2σ 8406–8604), which presented a mixed C_3/C_4 diet (see Figs. 3, 4, and 5). Although some authors have pointed out that because this skeleton has not been directly dated, its unusual carbon value (-15.3 ‰) could represent a late agricultural individual unrelated to the dated stratum (Cárdenas 2002). A distinct interpretation suggests that such individual could have come from a lowland region and/or that it may have belonged to a highly mobile group exploiting tropical resources frequently. Recent analysis of dental and craniofacial morphology suggests that during the early and middle Holocene, populations with distinct phenotypic patterns could have arrived, favoring the hypothesis of a non-local origin for such individual (Delgado 2015).

Some authors have suggested that the regional isotopic record reflects the importance of logistic mobility (Cárdenas 2002; van der Hammen et al. 1990) during the early Holocene, given the allegedly clear signal of tropical C_4 plants and large inter-individual isotopic variation (Cárdenas 2002). This, along with the paucity of the archaeobotanical record for this period, has led to interpret SB as a region for hunting rather than gathering, where much of the vegetal resources come from tropical lowlands (Cárdenas 2002). The results presented here, excluding the Galindo individual, are not consistent with the aforementioned hypothesis. On the contrary, they suggest an entire homogeneous C_3 diet indicative of an intensive use of locally available vegetal resources (Figs. 3, 4, 5, and 6; Tables 3, 4, 5, and 6). Additionally, the low preservation of the paleobotanic remains may, in part, explain their alleged absence in early contexts. Although the available isotopic evidence is not very useful to discuss human mobility, it suggests that early Holocene foragers exploited mostly local C_3 ecosystems and had therefore a restricted geographic range. This is partially supported by the paleoecological evidence, which suggests a relatively homogeneous distribution of C_3 resources over the early/middle Holocene for the SB (Boom et al. 2001; Mora and Pratt 2002). Nevertheless, the finding of both foreign fauna (e.g., *Felidae* and *Atelidae* families) and non-local lithic tools (e.g., fluting technology) by using allochthonous raw materials suggests that the widely accepted

territorial mobility hypothesis (e.g., Cárdenas 2002; Correal and van der Hammen 1977) must be monitored by using other lines of evidence (Gnecco 2000).

Middle Holocene (ca. 6000–4500 cal BP)

The isotopic data for this temporal block shows few differences regarding the early Holocene, especially in terms of carbon isotopes, which suggest a continuous exploitation of local C_3 vegetal resources and that there was virtually no change in gathering. Both the univariate/bivariate and regression/multivariate analyses indicate strong dietary similarity between early and mid-Holocene foragers (Figs. 3, 4, 5, and 6; Tables 3, 4, 5, 6 and 7). The only change regarding the previous period is a slight increase in nitrogen and diet-apatite spacing, which indicates higher and more diverse animal protein consumption during the middle Holocene (Figs. 3 and 4b; Table 5). The zooarchaeological record indicates that small mammals, such as guinea pigs, became more important than deer during this time period. The increased importance of *Cavia porcellus* over other animal resources (e.g., deer) for middle Holocene hunter-gatherer economic strategies remains unclear. From the perspective of evolutionary geography (sensu Lahr and Foley 1998), the author (Delgado 2012a, 2015) suggested that mid-Holocene climatic changes (temperature increase and aridity) may have caused significant ecological modifications resulting from climate-dependent chorological changes affecting vegetal and animal communities. Thus, the retraction and/or fragmentation of forested areas likely produced the decline of deer populations, which, in turn, allowed the more intensive use of guinea pigs and other small-sized animals adapted to open habitats (i.e., grasslands) and freshwater resources. The relatively wide range of nitrogen (Figs. 3 and 4b; Table 3) seems to support this interpretation since it suggests the consumption of relatively diverse animal protein sources during this period.

An important aspect that must be taken into account for the interpretation of the emergence of agriculture in the study region from the isotopic record is that despite the fact that the most important changes related to food production are more noticeable during the initial and final late Holocene (e.g., the introduction of tropical crops, the intensive cultivation of C_3 plants, etc.), this does not necessarily imply that an early horticulture of C_3 plants was not developed, especially during the middle Holocene. The distinct analyses performed here, both univariate/bivariate and multivariate revealing a strong emphasis on C_3 plants, seem to support a mid-Holocene horticulture system (Figs. 3, 4, 5, and 6; Tables 3, 4, 5, and 6). This is in agreement with the rich paleobotanical record highlighting the importance of squash, *Dioscorea*, oca, and other highland tubercles (Cárdenas 2002; Correal 1990b; Correal and van der Hammen 1977). In addition, the initial appearance of lithic tools for vegetal processing in the local

archeological record dated to ca. 5800 cal BP (GrN-14477) (range 2σ 5560–5798) (Correal 1990b) also highlights the intensification of plant use from the middle Holocene onwards. This is interesting, as similar kinds of lithic tools have been found in archeological sites with clear and reliable evidence of plant management, since the Pleistocene/Holocene transition (Aceituno and Loaiza 2015; Gnecco and Mora 1997; Gnecco 2003).

Initial late Holocene (ca. 3800–2200 cal BP)

The initial late Holocene is a crucial period to address plant domestication and the origins of agriculture in the study region because it is during this period that some of the most important changes in food production occurred. The results of this study show the existence of C_3 , mixed C_3/C_4 , and C_4 diets (Figs. 3 and 4; Tables 3, 4, and 5). Although it is possible that during this period groups and/or individuals with distinct diets coexisted, this pattern also can be the result of poor chronological resolution and small sample size. Thus, the transitional character of this period may change in the near future with more and well-dated human samples. The extensive archaeobotanical evidence recovered from Aguazuque (ca. 4300 cal BP) and Zipacón (3500 cal BP (GrN-11125) (range 2σ 3445–3571), which includes sweet potato (*Ipomoea batata*), calabash tree (*Crescentia cujete*), avocado (*Persea americana*), cherry tree (*Prunus serotina*), and maize (grains and cobs of *Z. mays*) (Correal 1990b; Correal and Pinto 1983), points out that by the initial late Holocene, SB populations were already consuming several C_3 and C_4 domesticated plants. Regardless of some fluctuations, isotopic information suggests that the main dietary change occurred ca. 3000–2800 cal BP, when people consumed significantly more C_4 plants and animal protein (Fig. 4). The chronological discrepancy between the paleobotanic and the isotopic record regarding the initial time of dietary change could be attributed to the paucity of the isotopic evidence. Yet, the finding of two individuals from the upper levels of Tequendama dated around 3900–3500 cal BP and with carbon values indicative of mixed C_3/C_4 diets (see Fig. 4a) shows that actually a date of ca. 4000 cal BP may more reliably represent the initial change toward a C_4 diet. Bioarchaeological analysis supports the dietary change inferred from the isotopic and archaeobotanical record, since it indicates, on the one hand, an important increase in oral pathologies such as caries, dental calculus, and enamel hypoplasias and, on the other, the reduction of occlusal dental wear rates (Delgado 2015). The results also showed a slight increase in nitrogen (Fig. 4b), which coincides with the preponderance of guinea pig remains, highlighting the economic importance of this species for late Holocene horticultural societies (Correal and van der Hammen 1977; Correal and Pinto 1983; Correal 1990b). This is interesting because on the basis of the analysis of skeletal morphology, Correal and

Pinto (1983, p. 183) suggested that the probable date for the initial domestication of this species is around 3500 cal BP, which supports previous proposals (Ijzereef 1978, p. 170) that state that by ca. 2600 cal BP, these animals had been fully domesticated.

One of the main goals of this research was to provide interpretations about the biocultural processes that might have allowed the cultivation of plants. I also attempted to understand whether these biocultural processes were promoted by external factors such as climatic changes and/or population dispersals or whether they were the product of an in situ development. After evaluating the temporal dispersion of the isotopic record (especially carbon isotopes) throughout the Holocene (Figs. 4 and 5; Tables 3 and 4) by using distinct statistical and graphical approximations, the most conspicuous patterns are (1) homogeneity of the C₃ signal between 9000 and ca. 4500 cal BP; (2) the presence of C₃, C₃/C₄, and C₄ diets between ca. 4000 and 3500 cal BP; and (3) the preponderance of the C₄ signal after 2000 cal BP (Figs. 3, 4, 5, and 6; Tables 3, 4, and 5). Despite the fact that in situ development of agriculture is likely, especially given the importance of vegetal resources for the hunter-gatherer economy during the early and middle Holocene, the occurrence of strong, rapid, and multiple biocultural changes suggests that other factors were likely involved, with the most relevant being the entry of non-local populations with an agricultural subsistence. Climate change and environmental rearrangements do not seem to have been an important factor prompting to subsistence changes as the paleoecological record shows only a slight increase in precipitation and humidity during this time span (Marchant et al. 2002). In this context, it is worth mentioning the findings concerning the earliest evidence of maize and ceramic technology in the study region dated to around 3500 cal BP (Correal and Pinto 1983). Such evidence suggests, on the one hand, that despite the fact that maize could have been introduced well before 3500 cal BP given the early evidence of maize in other regions of northwestern South America (Bray et al. 1987; Cavelier et al. 1995; Monsalve 1985), its role as the mainly consumed plant took place later. On the other hand, it is striking that the earliest evidence of maize appeared along with the oldest evidence of pottery related to non-local lowland populations (Botiva 1989), which points to the fact that some of the most important cultivated crops may have been introduced by population expansions. This is in line with the long-held view of local archeologists, who have favored the hypothesis that incipient agriculture was introduced by populations from the Magdalena valley at least since ca. 3500 cal BP (Ardila 1984; Botiva 1989; Correal and Pinto 1983). Even though the isotopic record is fairly incomplete, it suggests similar dates for the initial dietary change around ca. 4000 cal BP (Figs. 3 and 4). This is relevant since studies of craniofacial and dental morphology found remarkable evolutionary

diversification during the initial late Holocene indicating population discontinuity (Delgado 2012a,b, 2015; Rodríguez and Colantonio 2015). Together, this data indicate that the change from C₃ diets related to hunter-gatherers/early horticulturalist to C₄ diets characteristic of agricultural societies is concomitant with the appearance and dispersals of food processing technologies (pottery and gridding tools) and the entry of human populations with distinct phenotypic patterns. Accordingly, these lines of evidence strongly support previous hypothesis that non-local populations, likely from the Magdalena valley, with distinct behavioral and biological traits introduced the tropical crop agriculture to the SB region during the initial late Holocene (Correal and van der Hammen 1977; Correal 1990b).

Final late Holocene (ca. 1300–600 cal BP)

The archeological record along with ethnohistorical accounts show that the Muisca society introduced intensive agriculture, developed advanced agricultural strategies, and established wide and complex commercial networks, all of which implied the availability of different foodstuffs from several regions (Cárdenas 1996; García 2012; Kruschek, 2003; Langebaek 1987). The isotopic record coincides with this diverse picture as it shows the existence of relatively heterogeneous diets and a well-established agriculture during the Muisca period, with some differences between the early and late period. The biochemical evidence stresses the importance of C₄ plants (primarily maize) complemented with other C₃ and C₄ crops, as well as C₄-feeding animals and freshwater resources (Figs. 3, 4, 5, and 6; Table 2). Although the strong C₄ signal suggests that maize was the most commonly used tropical plant, other C₄ crops (e.g., manioc), fruits, and palms were likely incorporated into the Muisca diet (García 2012). This means that the overwhelming C₄ signal, which until now has been interpreted as maize, in fact reflects more than one tropical resource consumed by these societies corroborating the ethnohistoric evidence (Langebaek 1987).

Previous studies (Cárdenas 1993, 1996) emphasized the absence of Andean foodstuffs in the isotopic record such as highland tubers like potato (*Solanum tuberosum*), sweet potato (*I. batata*), arracacha (*Arracacia xanthorrhiza*), oca (*O. tuberosa*), mashua (*Tropaeolum tuberosum*), and ullucu (*Ullucus tuberosus*), which according to ethnohistoric evidence were of crucial importance within the Muisca diet (Langebaek 1987). However, the bivariate results contradict such interpretation, showing instead wide ranges for $\delta^{13}\text{C}_{\text{col}}$ (Fig. 3; Tables 3 and 4), where a large part of the Muisca sample averaging ca. -15‰ indicates that C₃ resources such as highland tubers were also commonly consumed. Similarly, the regression and DFA results (Figs. 5 and 6) point out a C₃ trend for some individuals from the early and late Muisca period. What is clear from the isotopic data is that C₃ plants were not

as important as C_4 crops during this time span (Figs. 4a and 5). Interestingly, the local isotopic ecology (Table 2) revealed that some animal species (e.g., guinea pig and rabbit) possessed relatively enriched carbon isotopes, which is explained by the presence of wild C_4 plants in the SB region during the final late Holocene (Mora and Pratt 2002; supplementary Table 2). This implies that humans feeding on those animals may have displayed the same phenomenon. These data suggest that the alleged carbon enrichment along with the use of several C_4 products might overshadow the isotopic signal of C_3 plants.

Some researchers documented a sociopolitical differentiation between the early and the late Muisca periods (Boada 2006; Henderson and Ostler 2005; Krushek 2003), which coincides with other behavioral aspects, including socially constituted food consumption practices. Here, carbon and especially nitrogen isotopes revealed some differences between both periods. The bivariate results (Figs. 3a, b and 4b–d) show that the sample from the late period present higher nitrogen values, while the sample from the early period present slightly higher carbon ones; some of these differences are statistically significant (Tables 4 and 5). In addition, the DFA results support such chronological differentiation (Fig. 6; Tables 6 and 7). For carbon isotopes, cluster 3 (mostly representative of the early period) shows slightly more negative values indicating the relative importance of C_3 resources. For nitrogen, cluster 4 (mostly representative of the late period) shows higher values, which suggests more protein intake, primarily from animal sources (see also Fig. 4b). Cárdenas (1993) interpreted the relatively high nitrogen values in Muisca samples as evidence of marine resource consumption. In line with this, there have also been findings of marine animal remains (mollusks, gastropods, and shells) and the circulation of exotic marine products such as salt, fish flour, and salted and smoked fish within the Muisca territory. However, Cárdenas (1993, 1996) erroneously interpreted the high nitrogen values in infants of 0–3 years old (which are related to breastfeeding actually) as indicative of marine resources. His suggestion regarding the circulation and consumption of exotic marine products is problematic because these resources are not well-represented in the isotopic record. Despite the absence of a highly developed isotopic ecology, especially for local aquatic habitats, the results presented here suggest that the relatively high nitrogen values can be explained by the consumption of freshwater resources (e.g., fish), especially given the vast zooarchaeological evidence for the late period indicating the intensive exploitation of such resources (Enciso 1996).

Taking into account the entire temporal range investigated (ca. 9000–600 cal BP), it is clear that some of the most important changes regarding diet, according to the stable isotope data analyzed (Figs. 3, 4, 5, and 6; Tables 3, 4, 5, 6, and 7), occurred during the late Holocene and more specifically, during the Muisca period. Such dietary change and its associated biocultural transformations had profound implications for the

health and behavior of the Muisca societies. Complementary bioarchaeological evidence revealed that during the final late Holocene, there was an increase in the rate and plane of occlusal dental wear potentially related to the intensive use of grinding stones for processing plants. This infused additional environmental grit into the meal in the form of stone chips from the grinding implements producing more pronounced dental wear (Delgado 2015). Increased focus on maize, indicated for the strong C_4 signal (Figs. 3, 4, 5, and 6), could have negative consequences on the health of Muisca populations given its association with pathologies that result in iron deficiency, such as porotic hyperostosis and cribra orbitalia. Despite the fact that recent studies suggest more complex etiologies for such diseases (Walker et al. 2009), it is interesting that some authors reported higher frequencies among Muisca populations compared to other periods (Martínez 2012; Rodríguez 2006). Coinciding with the increased maize consumption, there is an increase in the prevalence of carious lesions over the course of the Muisca period (Delgado 2015). Finally, the analysis of dental enamel hypoplasias and non-specific infections (periosteal reactions) provides further evidence that Muisca populations may have experienced a dramatic increase in physiological stress (Delgado 2015; Rodríguez 2006). In general, the introduction of intensive agriculture produced a decline in health for the Muisca populations that reflects a change in the quality of diet and lifestyle.

Concluding remarks

The isotopic record revealed a slow subsistence transformation between the early and middle Holocene (~9000–4500 cal BP), which suggests dietary stability. Contrary to the expectations of a well-known model on Paleoindian subsistence, early Holocene hunter-gatherers presented a strong focus on plants with some fluctuation in protein sources (i.e., flexibility). The noticeable biocultural and climatic changes that occurred during the middle Holocene (ca. 6000–4500 cal BP) contrast with the stable isotope data only pointing to a slight increase in protein consumption. The appearance of lithic tools for intensive vegetal processing and the finding of some cultigens suggest that C_3 plant horticulture emerged during the middle Holocene. However, it is ca. 4000 cal BP when a change toward mixed C_3/C_4 diets occurred. Around ca. 3500 cal BP, human populations presented a strong C_4 signal and a slight increase in protein consumption. During the Muisca period (last 1100 cal years BP), the agricultural societies exhibited a strong reliance on C_4 plants such as maize complemented with other C_3 and C_4 crops, C_3 - C_4 feeding animals, and freshwater resources. In addition, there were differences in animal protein and C_3 plant consumption between early and late Muisca samples indicating slight changes in subsistence in the SB region in the previous European contact. Lastly, although this

research revealed interesting issues on the evolution of diet over the Holocene in this region, further research is still required. New stable isotope measurements for important periods (e.g., initial late Holocene) are necessary, which include additional data on mobility and dietary mobility along with an enhancement of the chronological resolution and a more complete regional isotopic ecology reconstruction.

Acknowledgments I would like to thank German Mora and Arnoud Boom for sharing their data on carbon isotopes from paleoenvironmental researches. Thanks to Javier Giraldo (Universidad del Cauca, Colombia) and Alejandra Ortíz (Arizona State University, USA) for their useful comments on early drafts of this paper. Thanks to Alexandra Delgado for help with the English version of the manuscript. This research was partially supported by the Consejo Nacional de Investigaciones Científicas y Técnicas (CONICET, Argentina) and Fundación de Investigaciones Arqueológicas Nacionales (FIAN, Colombia) (project no. 409-2010).

References

- Aceituno FJ, Loaiza N (2015) The role of plants in the early human settlement of Northwest South America. *Quat Inter* 363:20–27
- Aceituno FJ, Rojas S (2015) Lithic studies in Colombia during the late Pleistocene and the early Holocene. *Chungará* 47:13–23
- Aceituno FJ, Loaiza N, Delgado ME, Barrientos G (2013) The initial human settlement of Northwest South America during the Pleistocene/Holocene transition: synthesis and perspectives. *Quat Inter* 301:23–33
- Ardila GI (1984) Chía. Un sitio precerámico en la Sabana de Bogotá. Fundación de Investigaciones Arqueológicas Nacionales. Banco de la República, Bogotá
- Aufderheide AC (1990) Results of tests performed on the bones on Aguazuque I. In: Correal G (ed) Aguazuque. Evidencias de cazadores, recolectores y plantadores en la altiplanicie de la Cordillera Oriental. Fundación de Investigaciones Arqueológicas Nacionales, Banco de la República, pp. 305–307
- Boada AM (2006) Patrones de asentamiento regional y sistemas de agricultura intensiva en Cota y Suba, Sabana de Bogotá (Colombia). Fundación de Investigaciones Arqueológicas Nacionales, Banco de la República
- Boom A, Mora G, Cleef A, Hooghiemstra H (2001) High altitude C₄ grasslands in the northern Andes: relicts from glacial conditions? *Rev Palaeobot Palynol* 115:147–160
- Borrero LA (2015) Moving: hunter-gatherers and the cultural geography of South America. *Quat Int* 363:126–133
- Botiva A (1989) La altiplanicie Cundiboyacense. In: Botiva A, Groot AM, Herrera L, Mora S (eds) Colombia prehispánica: regiones arqueológicas. Instituto Colombiano de Antropología e Historia, Bogotá, pp. 77–115
- Bray W, Herrera LF, Cardale de Schrimppf M, Botero P, Monsalve JG (1987) The ancient agricultural landscape of Calima, Colombia. In: Denevan WM, Mathewson K, Knaap G (eds) Pre-Hispanic agricultural fields in the Andean region, vol 359. BAR: International Series, pp. 443–481
- Cárdenas F (1993) Paleodieta y paleodemografía en poblaciones arqueológicas muiscas (sitios Las Delicias y Candelaria). *Revista Colombiana de Antropología*. 30:129–148
- Cárdenas F (1996) La dieta prehispánica entre poblaciones arqueológicas muiscas. In: Therrien M, Enciso B (eds) Bioantropología de la Sabana de Bogotá. Instituto Colombiano de Antropología e Historia, Bogotá, pp. 85–109
- Cárdenas F (2002) Datos sobre la alimentación prehispánica en la sabana de Bogotá, Colombia. *Informes Arqueológicos* (3). Instituto Colombiano de Antropología e Historia.
- Cavelier I, Rodríguez C, Mora S, Herrera LF, Morcote G (1995) No solo de caza vive el hombre: ocupación del bosque amazónico, holoceno temprano. In: Cavelier I, Mora S (eds) . *Ámbito y ocupaciones tempranas de la América tropical*, ICANH-Fudación Erigai, pp. 27–44
- Correal G (1986) Apuntes sobre el medio ambiente pleistocénico y el hombre prehistórico en Colombia. In: Bryan AL (ed) *New evidence for the Pleistocene peopling of the Americas*. University of Main, Orono, Center for the Study of the Early Man, pp. 115–131
- Correal G (1990a) Evidencias culturales durante el Pleistoceno y Holoceno de Colombia. *Rev Arqueol Am* 1:69–89
- Correal G (1990b) Aguazuque. Evidencia de cazadores, recolectores y plantadores en la altiplanicie de la Cordillera Oriental. Fundación de Investigaciones Arqueológicas Nacionales. Banco de la República, Bogotá
- Correal G, Pinto M (1983) Investigaciones arqueológicas en el Municipio de Zipacón, Cundinamarca. Fundación de Investigaciones Arqueológicas Nacionales. Banco de la República, Bogotá
- Correal G, van der Hammen T (1977) Investigaciones arqueológicas en los abrigos rocosos del Tequendama. 11,000 años de prehistoria en la Sabana de Bogotá. Banco Popular, Bogotá
- Delgado ME (2007) El impacto de la colonización Española: Evidencias paleopatológicas e isotópicas de cambios en la salud oral y reducción en la diversidad de la dieta en sociedades Coloniales Nativas del Sur Occidente de Colombia. *Revista de Estomatología* 15:17–37
- Delgado ME (2012a) Mid and late Holocene population changes at the Sabana de Bogotá (northern South America) inferred from skeletal morphology and radiocarbon chronology. *Quat Int* 256:2–11
- Delgado ME (2012b) Dental and craniofacial diversity in the northern Andes, and the early peopling of South America. In: Miotti L, Saleme M, Flegenheimer N, Goebel T (eds) *Southbound: late Pleistocene peopling of Latin America*. Center for the Study of the First Americans, Department of Anthropology, University of Texas A&M University, Texas, pp. 33–38
- Delgado ME (2015) Variación Dental y Craneofacial en el Norte de los Andes durante el Pleistoceno y el Holoceno. Su relevancia para la Discusión de la Colonización Temprana de Sudamérica, Ph.D. Dissertation, Facultad de Ciencias Naturales y Museo, Universidad Nacional de La Plata, La Plata, Buenos Aires
- Delgado ME, Langebaek C, Aristizabal L, Tykot RH, Johnson L (2014) Indicadores bioquímicos de dieta en Tibanica, un poblado muisca tardío en la Sabana de Bogotá (Colombia). Isótopos estables ($\delta^{13}C_{col}$, $\delta^{13}C_{ap}$, $\delta^{15}N$) y elementos traza (Ba, Sr). In: Luna L, Aranda C, Suby J (eds) . *Avances Recientes de la Bioarqueología Latinoamericana*, Grupo de Investigación en Bioarqueología, pp. 103–127
- Delgado ME, Aceituno FJ, Loaiza N (2015a) Multidisciplinary studies on the human-environment interaction during the initial peopling of the Americas. *Quat Int* 363:1–3
- Delgado M, Aceituno FJ, Barrientos G (2015b) ¹⁴C data and the early colonization of Northwest South America: a critical assessment. *Quat Int* 363:55–64
- Emery K, Wright L, Schwarcz H (2000) Isotopic analysis of ancient deer bone: biotic stability in collapse period Maya land-use. *J Archaeol Sci* 27:537–550
- Enciso B (1996) Fauna asociada a tres asentamientos muisca del sur de la Sabana de Bogotá. Siglos VIII-XIV D.C. In: Therrien M, Enciso B (eds) *Bioantropología de la Sabana de Bogotá*. Instituto Colombiano de Antropología e Historia

- Froehle AW, Kellner CM, Schoeninger M (2012) Multivariate carbon and nitrogen stable isotope model for the reconstruction of prehistoric human diet. *Am J Phys Anthropol* 147:352–369
- García JL (2012) The foods and the crops of the muisca: a dietary reconstruction of the intermediate chiefdoms of Bogotá and Tunja. Master Dissertation, Department of Anthropology, University of Central Florida, Orlando, Florida, Colombia
- Gnecco C (2000) Ocupación temprana de bosques tropicales de montaña. Editorial Universidad del Cauca, Popayán
- Gnecco C (2003) Against ecological reductionism: late Pleistocene hunter-gatherers in the tropical forest of northern South America. *Quat Int* 109–110:13–21
- Gnecco C, Mora S (1997) Late Pleistocene/early Holocene tropical forest occupations at San Isidro and Peña Roja. *Colombia Antiquity* 71: 683–690
- Gómez J (2012) Análisis de marcadores óseos de estrés en poblaciones del Holoceno medio y tardío inicial de la Sabana de Bogotá. *Revista Colombiana de Antropología* 48:143–168
- Gómez A, Berrío J, Hooghiemstra H, Becerra M, Marchant R (2007) A Holocene pollen record of vegetation change and impact from Pantano de Vargas, and intra-Andean basin of Duitama. *Colombia Rev Palaeobot Palynol* 145:143–157
- Guillet B, Faivre A, Mariotti JK (1988) The ^{14}C and ^{13}C ratios of soil organic matter as a means of studying the past vegetation in inter-tropical regions: examples from Colombia (South America). *Palaeogeogr Palaeoclimatol Palaeoecol* 65:51–58
- Henderson H, Ostler N (2005) Muisca settlement organization and chiefly authority at Suta, Valle de Leyva, Colombia: a critical appraisal of native concepts of house for studies of complex societies. *J Anthropol Archaeol* 24:148–178
- Hurt WR, van der Hammen T, Correal G (1977) The El Abra rock shelters, Sabana de Bogotá, Colombia, South America. Occasional papers and monographs, vol 2. Bloomington Indiana University Museum.
- Ijzereef G (1978) Faunal remains from the el Abra Rockshelters (Colombia). *Palaeogeogr Palaeoclimatol Palaeoecol* 25:163–177
- Katzenberg MA (2008) Stable isotope analysis: a tool for studying past diet, demography and life history. In: Katzenberg M, Saunders SR (eds) *Biological anthropology of the human skeleton*. John Wiley & Sons, Inc, pp. 305–327
- Kellner C, Schoeninger M (2007) A simple carbon isotope model for reconstructing prehistoric human diet. *Am J Phys Anthropol* 133: 1112–1127
- Kohn M, McKay M, Knight K (2005) Dining in the Pleistocene—who's the menu? *Geology* 33:649–652
- Kruschek MH (2003) The evolution of the Bogotá chiefdom: a household view. Ph.D dissertation, Faculty of Arts and Sciences. Department of Anthropology, University of Pittsburgh, Pittsburgh
- Lahr M, Foley R (1998) Towards a theory of modern human origins: geography, demography, and diversity in recent human evolution. *Yearb Phys Anthropol* 41:137–176
- Langebaek CH (1987) Mercados, poblamiento e integración étnica entre los muiscas, siglo XVI. Colección Bibliográfica Banco de La República, Bogotá
- Marchant R, Behling H, Berrío J, Cleef A, Duivenvoorden J, Hooghiemstra H, Kuhry P, Melief R, Schreve-Brinkman E, van Geel B, van der Hammen T, van Reenen G, Wille M (2002) Pollen-based biome reconstructions for Colombia at 3000, 6000, 9000, 12000, 15000 and 18000 ^{14}C yr ago: late quaternary tropical vegetation dynamics. *J Quat Sci* 17:113–129
- Martínez I (2012) La salud en poblaciones Muiscas durante la transición del periodo temprano al tardío, estudio comparativo. Departamento de Antropología, Facultad de Ciencias Humanas, Universidad Nacional de Colombia, Master Dissertation
- Monsalve JG (1985) A pollen core from the hacienda Lusitania. *Pro Calima*. 4, 40–44. Basilea: Periodische Publikation der Vereinigung Pro Calima.
- Mora G, Pratt LM (2002) Carbon isotopic evidence from paleosols for mixed C3/C4 vegetation in the Sabana de Bogotá basin. *Colombia Quat Sci Rev* 21:985–995
- Morcote G (1996) Evidencia arqueobotánica de cultígenos presentes en grupos muiscas de la Sabana de Bogotá en los siglos VIII y IX. In: Enciso B (ed) *Therrien M. Bioantropología de la Sabana de Bogotá*, Instituto Colombiano de Antropología e Historia, pp. 59–83
- Moreano AC (2011) Análisis arqueozoológico de elementos óseos de fauna recuperados en el complejo funerario muisca Tibanica (Soacha). Universidad de los Andes, Bogotá, Informe Departamento de Antropología
- Nieuwenhuis CJ (1998) Unattractive but effective: unretouched pointed flakes as projectile points? A closer look at the Abriense and Tequendamiense artefacts. In: Plew MG (ed) *Explorations in American archaeology. Essays in Honor of Wesley R. Hurt*. University Press of America, Lanham, pp. 133–163
- Nieuwenhuis CJ (2002) Traces on tropical tools: a functional study of Chert artifacts from Preceramic sites in Colombia. Ph.D. dissertation. Leiden University, Archaeological Studies Leiden University. No. 9. Faculty of Archaeology, University of Leiden, Leiden
- Parra R (2001) Identificación de fitolitos en el cálculo dental de individuos prehispánicos de Tunja (Boyacá) y Soacha (Cundinamarca). In: Rodríguez JV (ed) *Los Chibchas. Adaptación y diversidad en los Andes Orientales de Colombia*. Universidad Nacional de Colombia, Bogotá, pp. 237–249
- Peña G, Pinto M (1996) Mamíferos más comunes en sitios precerámicos de La Sabana de Bogotá: Guía ilustrada para arqueólogos. Editorial Guadalupe, Bogotá
- Pinto M (2003) Galindo, un sitio a cielo abierto de cazadores-recolectores en la Sabana de Bogotá. Fundación de Investigaciones Arqueológicas Nacionales. Banco de la República, Bogotá
- Piperno D, Pearsall D (1998) The origins of agriculture in the lowland Neotropics. Academic Press, San Diego
- Price TD, Burton JH (2011) An introduction to archaeological chemistry. Springer, New York
- R Core Team (2015) R: A language and environment for statistical computing. R Foundation for Statistical Computing, Vienna, Austria. ISBN 3–900051–07–0. Available online at <http://www.R-project.org/>.
- Rodríguez JV (2006) Las enfermedades en las condiciones de vida prehispánicas de Colombia. Universidad Nacional de Colombia, Departamento de Antropología. Facultad de Ciencias Humanas
- Rodríguez JV (2011) Los Chibchas: hijos del sol, la luna y los Andes. Universidad Nacional de Colombia, Instituto de Desarrollo Urbano
- Rodríguez JV, Cifuentes A (2005) Un yacimiento formativo ritual en el entorno de la antigua laguna de La Herrera, Madrid. *Cundinamarca Maguaré* 19:103–131
- Rodríguez D, Colantonio S (2015) Biological affinities and regional microevolution among pre-Hispanic communities of Colombia's northern Andes. *Anthropol Anz* 72:141–168
- Schoeninger MJ (2009) Stable isotope evidence for the adoption of maize agriculture. *Curr Anthropol* 50:633–640
- Simón P (1981) [1625] Noticias históricas de la conquista de tierra firme en las Indias Occidentales. Bogotá, Banco popular
- Somerville AD, Froehle A (2011) New approaches to investigating ancient Maya diet: a three-isotope model for the reconstruction of dietary protein sources. *Am J Phys Anthropol* 144(Suppl 52):280
- Stuiver M, Reimer PJ (1993) Extended ^{14}C database and revised CALIB radiocarbon calibration program. *Radiocarbon* 35:215–230
- Szpak P (2014) Complexities of nitrogen isotopes biogeochemistry in plant-soil systems: implications for the study of ancient agricultural and animal management practices. *Front Plant Sci* 5:1–19
- Tykot RH (2004) Stable isotopes and diet: you are what you eat. In: Course C, Martini M, Milazzo M, Piacentini M (eds) *Proceedings*

- of the International School of Physics “Enrico Fermi”. IOS press, Amsterdam, pp. 433–444
- Tykot RH (2006) Isotope analyses and the histories of maize. In: Staller JE, Tykot RH, Benz BF (eds) *Histories of maize: multidisciplinary approaches to the prehistory, linguistics, biogeography, domestication, and evolution of maize*. Academic Press (Elsevier), Cambridge, pp. 131–142
- Tykot RH (2014) Bone chemistry and ancient diet. In: Smith C (ed) *Encyclopedia of global archaeology*. Archaeological science section. Springer, Berlin, pp. 931–941
- Tykot RH, Falabella F, Planella MT, Aspillaga E, Sanhueza L, Becker C (2009) Stable isotopes and archaeology in Central Chile: methodological insights and interpretive problems for dietary reconstruction. *Int J Osteoarch* 19:156–170
- van der Hammen T (1992) *Historia, ecología y Vegetación*. Banco Popular, Bogotá
- van der Hammen T, Hooghiemstra H (1995) The el Abra stadial, a younger Dryas equivalent in Colombia. *Quat Sci Rev* 14:841–851
- van der Hammen T, Correal G, van Klinken GJ (1990) Isótopos estables y dieta del hombre prehistórico en la Sabana de Bogotá. *Boletín de Arqueología, Fundación de Investigaciones Arqueológicas Nacionales*
- Vélez M, Hooghiemstra H, Metcalfe S, Willie M, Berrío J (2006) Late glacial and Holocene environmental and climatic changes from a limnological transects through Colombia, northern South America. *Palaeogeogr Palaeoclimatol Palaeoecol* 234:81–96
- Walker PL, Bathurst R, Richman R, Gjerdrum T, Andrusko V (2009) The causes of porotic hyperostosis and cribra orbitalia: a reappraisal of the iron-deficiency-anemia hypothesis. *Am J Phys Anthropol* 139: 109–125