



# Clinical characteristics of pediatric cases infected with the SARS-CoV-2 Omicron variant in a tertiary children's medical center in Shanghai, China

Nan Shen<sup>1</sup> · Yu-Fen Wu<sup>2</sup> · Yi-Wei Chen<sup>3</sup> · Xiao-Yan Fang<sup>4</sup> · Min Zhou<sup>5</sup> · Wen-Yu Wang<sup>6</sup> · Ming-Yu Tang<sup>7</sup> · Qiu-Hui Pan<sup>8,9</sup> · Ji Ma<sup>8,9</sup> · Hao Zhang<sup>10</sup> · Qing Cao<sup>1</sup> 

Received: 31 May 2022 / Accepted: 6 September 2022 / Published online: 17 October 2022

© Children's Hospital, Zhejiang University School of Medicine 2022

## Abstract

**Background** The number of pediatric cases of infection with the severe acute respiratory syndrome coronavirus 2 (SARS-CoV-2) Omicron variant has increased. Here, we describe the clinical characteristics of children in a tertiary children's medical center in Shanghai.

**Methods** A total of 676 pediatric coronavirus disease 2019 (COVID-19) cases caused by the Omicron variant who were admitted to the Shanghai Children's Medical Center from March 28 to April 30, 2022 were enrolled in this single-center, prospective, observational real-world study. Patient demographics and clinical characteristics, especially COVID-19 vaccine status, were assessed.

**Results** Children of all ages appeared susceptible to the SARS-CoV-2 Omicron variant, with no significant difference between sexes. A high SARS-CoV-2 viral load upon admission was associated with leukocytopenia, neutropenia, and thrombocytopenia ( $P=0.003$ ,  $P=0.021$ , and  $P=0.017$ , respectively) but not with physical symptoms or radiographic chest abnormalities. Univariable linear regression models indicated that comorbidities ( $P=0.001$ ) were associated with a longer time until viral clearance, and increasing age ( $P<0.001$ ) and two doses of COVID-19 vaccine ( $P=0.001$ ) were associated with a shorter time to viral clearance. Multivariable analysis revealed an independent effect of comorbidities ( $P<0.001$ ) and age ( $P=0.003$ ). The interaction effect between age and comorbidity showed that the negative association between age and time to virus clearance remained significant only in patients without underlying diseases ( $P<0.001$ ).

**Conclusion** This study describes the clinical characteristics of children infected with the Omicron variant of SARS-CoV-2 and calls for additional studies to evaluate the effectiveness and safety of vaccination against COVID-19 in children.

**Keywords** COVID-19 vaccine · Omicron variant · Pediatric COVID-19 · SARS-CoV-2

## Introduction

At the beginning of 2022, a wave of severe acute respiratory syndrome coronavirus 2 (SARS-CoV-2) spread rapidly in Shanghai, China. The Shanghai Municipal Health Commission reported a total of 537,644 cases, including 53,355 confirmed cases as of April 30, 2022. Some studies have suggested that this outbreak was caused by the BA.2.2

sublineage [1], which is derived from the Omicron variant [2]. The Omicron variant has raised serious concerns among the global public health community and general public due to its increased transmissibility, severity, and capacity for immune escape [3]. Promisingly, recent studies revealed that, as in adults, the severity of coronavirus disease 2019 (COVID-19) in children infected with the Omicron variant was significantly less than that in those infected with the Delta variant [4, 5]. Moreover, as a severe complication of SARS-CoV-2 infection, a multisystem inflammatory syndrome in children during the Omicron wave was less frequent and severe than during the Alpha or Delta waves of the COVID-19 pandemic [6]. However, notably, the presence of comorbidities was associated with moderate or severe outcomes among children with Omicron variant infection

✉ Hao Zhang  
drzhanghao@126.com

✉ Qing Cao  
caoqing@scmc.com.cn

Extended author information available on the last page of the article

but not with Delta variant infection [4]. To date, few studies have examined pediatric cases of Omicron infections in China. Therefore, an updated analysis of pediatric cases with confirmed SARS-CoV-2 Omicron variant infection could help define the scope of clinical characteristics and severity of this disease.

Shanghai Children's Medical Center (SCMC) bears more than a quarter of the medical demand of children in Shanghai, including the Pudong and Fengxian districts. As of May 31, 2022, a total of 798 confirmed cases of COVID-19 have been admitted to SCMC. COVID-19 vaccines are highly effective against symptomatic forms of this disease, and inactivated vaccines are approved for use in children and adolescents aged 3–17 years in China [7]. Modest reductions in mRNA vaccine effectiveness against infection and mild disease have been observed with the Beta and Delta variants [8–10]. However, the effectiveness of inactivated vaccines against symptomatic COVID-19 caused by the Omicron variant has been investigated in only a few studies. In the present study, we summarized the clinical characteristics of the first 676 children who were admitted to SCMC from March 28 to April 30, 2022, addressing the effectiveness of inactivated COVID-19 vaccines in children infected with the SARS-CoV-2 Omicron variant.

## Methods

### Study design and participants

This study was a single-center, prospective, observational real-world study conducted at the Shanghai Children's Medical Center (SCMC) between March 28, 2022, and April 30, 2022. SCMC admits patients with various pediatric diseases up to the age of 18 years. In this study, pediatric patients infected with the SARS-CoV-2 Omicron variant were enrolled only if they volunteered to participate, and their electronic medical records were available and included demographic data, COVID-19 vaccination status, clinical symptoms, laboratory findings, and chest radiographic findings. The study was approved by the Institutional Review Board and the Ethics Committee of Shanghai Children's Medical Center (SCMCIRB-K2022053-3). Before inclusion, written informed consent was obtained from each patient and/or their parents.

### SARS-CoV-2 nucleic acid detection

Oropharyngeal swabs were obtained upon admission and stored at 4 °C in inactivated virus preservation solution until RNA extraction. Simultaneous detection of three SARS-CoV-2 genes, *ORF1ab* (encoding RNA-dependent RNA polymerase), *N* (encoding nucleocapsid protein), and

*E* (encoding envelope protein), was performed using SARS-CoV-2 nucleic acid detection kits (Shanghai ZJ Bio-Tech Co. Ltd., Liferiver, cat. No. Z-RR-0479-02-50) with preserved oropharyngeal swabs following the manufacturer's instructions. Briefly, we prepared 25 µL reaction mixtures containing 5 µL of purified RNA and 20 µL of polymerase chain reaction (PCR) master mix for each sample. The PCR cycling conditions were as follows: (1) 45 °C for 10 minutes; (2) 95 °C for 3 minutes; and (3) 45 cycles of 95 °C for 15 seconds and 58 °C for 30 seconds. A cycle threshold (Ct) ≤ 43 was set as a cutoff for SARS-CoV-2 positivity.

### Clinical data collection

Electronic medical records were reviewed to obtain demographic and clinical data, including age, sex, comorbidities, clinical symptoms, laboratory findings, chest radiographic findings, and COVID-19 vaccination status. COVID-19-positive patients were then transferred to hospitals specializing in COVID-19 treatment, and follow-up interviews were conducted by phone every two weeks until viral clearance. The main purpose of the follow-up interview was to determine the time elapsed in hospital care until the patients were negative for SARS-CoV-2.

Several special clinical variables, including radiographic chest abnormalities, SARS-CoV-2 viral load upon admission, and time to SARS-CoV-2 clearance, were collected. The definitions of these variables are as follows. Radiographic chest abnormality referred to at least one abnormal radiographic feature, such as blurred lung texture, lung exudation, lung consolidation, and pleural effusion, based on chest X-ray or chest computed tomography (CT) at initial diagnosis of COVID-19. Moreover, the Ct value of quantitative PCR (qPCR) was used to indicate the SARS-CoV-2 viral load upon admission. A higher Ct value indicates a lower viral load. In addition, the time to SARS-CoV-2 clearance was taken from the date of qPCR positivity for SARS-CoV-2 and ended on the first negative qPCR.

### Statistical analysis

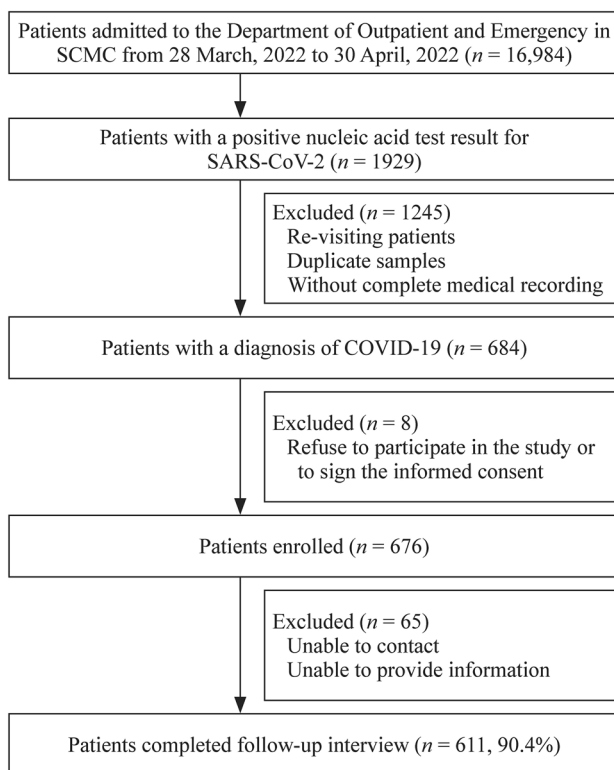
As appropriate, continuous variables were expressed as medians and interquartile ranges (IQRs) or means and standard deviations depending on the normality of the distribution of the variables. Categorical variables were summarized as counts and percentages. Comparisons of clinical characteristics among patients were conducted between those with normal and those with abnormal chest radiographic manifestations using either Student's *t* test or the Wilcoxon rank-sum test for continuous variables and the Chi-squared test or Fisher's exact test for categorical variables. Univariate logistic regression was used to evaluate the association between each COVID-19 symptom and the SARS-CoV-2 viral load

upon admission. Univariate linear regression was further used to assess the association between routine blood test results and the viral load upon admission. In addition, baseline clinical impacts of the viral load and the time needed for viral clearance were estimated using univariate and multivariate linear regression models. Interactions between impacts were tested. If a significant interaction effect was detected, the multivariable model was further stratified.  $P$  values  $< 0.05$  were considered statistically significant. All statistical analyses were performed using R software, version 4.0.3 (<http://www.R-project.org>).

## Results

### Demographic and clinical characteristics

A total of 676 pediatric cases of COVID-19 were enrolled in this study, of whom 611 (90.4%) completed follow-up interviews (Fig. 1). During this COVID-19 outbreak in Shanghai and in the Pudong District in particular, the number of admissions increased in our hospital in a manner consistent with the significant increase in the overall number of infections (Supplementary Fig. 1). In the



**Fig. 1** The flow chart of this study. SCMC Shanghai Children's Medical Center, COVID-19 coronavirus disease 2019, SARS-CoV-2 severe acute respiratory syndrome coronavirus 2

present study, 474 of 676 patients underwent chest radiographic examination, including chest X-ray and chest CT. Eight of the 474 radiographic chest examinations showed abnormalities in both types of imaging, with 27.6% presenting with abnormalities in at least one type of imaging. The most common changes in chest imaging were blurred lung texture (89.3%) and exudation (13.7%). Supplementary Figure 2 shows the radiologic findings upon admission.

Notably, transcutaneous oxygen saturation remained normal in all patients at admission. Furthermore, no patient was admitted to an intensive care unit, required mechanical ventilation, or died in this study. Moreover, the median age of these patients was 2.9 (IQR = 1.4–6.2) years, and 54.7% were male. The highest infection rate was observed in children aged 1–3 years (31.8%), followed by 4–6 years (22.2%), and 7–12 years (20.7%). Younger age was associated with a higher incidence of abnormal chest imaging ( $P = 0.002$ ). Fever was the most common symptom, present in 86.5% of the patients upon admission, followed by cough (35.8%), rhinorrhea (11.2%), and nausea and vomiting (9.9%). Among the overall children, 10.5% had at least one underlying disease (e.g., hematological malignancies, cardiovascular diseases, and chronic lung diseases). Children with comorbidities were more likely to present abnormal chest imaging than those without comorbidities, with borderline statistical significance (15.3% vs. 8.7%,  $P = 0.057$ ). Vaccination status was known for 646 (95.6%) patients, of whom 119 (18.4%) were vaccinated. Of the 119 vaccinated patients, 22 (3.3%) were vaccinated once, and 97 (14.3%) were vaccinated twice. No children had ever received three doses of inactivated vaccines. Vaccination status was not associated with radiographic chest abnormalities in the patients. The demographic and clinical characteristics of the pediatric patients are presented in Table 1.

Detection assays performed at admission showed that the median Ct values of the SARS-CoV-2 *ORF1ab*, *N*, and *E* genes were 28.2 (IQR = 21.1–32.4), 27.6 (IQR = 19.2–32.1), and 26.3 (IQR = 19.4–30.7), respectively, with higher Ct values corresponding to lower viral RNA titers. No significant differences were found between the Ct values of the *ORF1ab*, *N*, and *E* genes in the abnormal chest imaging group and the normal chest imaging group ( $P = 0.571$ ,  $P = 0.434$ , and  $P = 0.550$ , respectively). In addition, there were no obvious differences between white blood cell, lymphocyte, and neutrophil counts or among the C-reactive protein values of these two groups ( $P = 0.947$ ,  $P = 0.562$ ,  $P = 0.652$ , and  $P = 0.185$ , respectively) (Table 1). The children diagnosed with COVID-19 with abnormal chest imaging did not have more prominent laboratory abnormalities than those with normal chest imaging.

**Table 1** Clinical characteristics and laboratory findings of children with SARS-CoV-2 infection with normal or abnormal chest radiographic findings

Characteristics	All patients ( <i>N</i> =676)	Chest radiographic findings		<i>P</i>
		With abnormal chest imaging ( <i>n</i> =131)	With normal chest imaging ( <i>n</i> =343)	
Age (y)				
Median (IQR)	2.9 (1.4–6.2)	1.9 (0.9–3.6)	2.8 (1.3–6.1)	0.002
Distribution, <i>n</i> (%)				
< 1	118 (17.5)	34 (26.0)	67 (19.5)	
1–3	215 (31.8)	53 (40.5)	104 (30.3)	
4–6	150 (22.2)	20 (15.3)	76 (22.2)	
7–12	140 (20.7)	14 (10.7)	72 (21.0)	
12–18	32 (4.7)	5 (3.8)	13 (3.8)	
Male sex, <i>n</i> (%)	370 (54.7)	76 (58.0)	185 (53.9)	0.487
Symptoms at entry, <i>n</i> (%)				
Fever	585 (86.5)	116 (88.5)	305 (88.9)	0.329
Cough	242 (35.8)	51 (38.9)	125 (36.4)	0.848
Nasal congestion	30 (4.4)	9 (6.9)	16 (4.7)	0.506
Rhinorrhea	76 (11.2)	19 (14.5)	38 (11.1)	0.443
Sore throat	33 (4.9)	5 (3.8)	10 (2.9)	0.874
Hoarseness	21 (3.1)	2 (1.5)	11 (3.2)	0.466
Shortness of breath	10 (1.5)	3 (2.3)	4 (1.2)	0.656
Wheeze	11 (1.6)	5 (3.8)	5 (1.5)	0.232
Nausea and vomiting	67 (9.9)	6 (4.6)	40 (11.7)	0.025
Diarrhea	20 (3.0)	4 (3.1)	10 (2.9)	1.000
Comorbidity, <i>n</i> (%)				
Without comorbidity	605 (89.5)	111 (84.7)	313 (91.3)	0.057
With comorbidity	71 (10.5)	20 (15.3)	30 (8.7)	
Vaccination status, <i>n</i> (%)				0.431
Unvaccinated	527 (78.0)	110 (84.0)	275 (80.2)	
One dose	22 (3.3)	2 (1.5)	10 (2.9)	
Two doses	97 (14.3)	13 (9.9)	45 (13.1)	
Laboratory findings, mean $\pm$ SD				
C-reactive protein (mg/L)	4.8 $\pm$ 9.7	4.2 $\pm$ 6.4	4.4 $\pm$ 9.7	0.888
White blood cell count ( $\times 10^9/L$ )	6.6 $\pm$ 3.0	6.6 $\pm$ 2.7	6.6 $\pm$ 3.1	0.947
Red blood cell count ( $\times 10^{12}/L$ )	4.5 $\pm$ 0.5	4.4 $\pm$ 0.5	4.5 $\pm$ 0.5	0.203
Haemoglobin (g/L)	124.5 $\pm$ 12.9	122.2 $\pm$ 14.1	123.5 $\pm$ 12.6	0.309
Platelet count ( $\times 10^9/L$ )	216.6 $\pm$ 82.3	231.6 $\pm$ 94.5	217.0 $\pm$ 81.2	0.097
Lymphocyte count ( $\times 10^9/L$ )	1.9 $\pm$ 1.5	2.1 $\pm$ 1.7	2.0 $\pm$ 1.6	0.562
Neutrophil count ( $\times 10^9/L$ )	3.9 $\pm$ 2.7	3.7 $\pm$ 2.4	3.8 $\pm$ 2.9	0.652
Proportion of lymphocytes (%)	29.8 $\pm$ 19.4	31.8 $\pm$ 20.1	31.2 $\pm$ 20.5	0.782
Proportion of neutrophil (%)	56.9 $\pm$ 20.7	55.1 $\pm$ 21.0	55.6 $\pm$ 21.8	0.826
Initial SARS-CoV-2 tests, median (IQR)				
CT value of SARS-CoV-2 <i>ORF1ab</i> gene	28.2 (21.1–32.4)	27.6 (20.7–32.3)	26.0 (20.3–32.1)	0.571
CT value of SARS-CoV-2 <i>N</i> gene	27.6 (19.2–32.1)	27.0 (18.4–32.3)	25.0 (18.4–31.2)	0.434
CT value of SARS-CoV-2 <i>E</i> gene	26.3 (19.4–30.7)	25.7 (18.8–30.5)	24.2 (18.5–30.1)	0.550

SARS-CoV-2 severe acute respiratory syndrome coronavirus 2, IQR interquartile range, SD standard deviation, CT computed tomography, ORF open reading frame, N nucleocapsid gene, E envelope protein gene

### Clinical characteristics and protective or impact factors for viral load associated with SARS-CoV-2 viral load upon admission

The associations between SARS-CoV-2 viral load upon admission and different clinical characteristics of these children were evaluated. First, univariate logistic regression was used to assess possible relationships between COVID-19 symptoms and SARS-CoV-2 viral load upon admission to our clinic. No significant association was observed between the prevalence of COVID-19-related symptoms and SARS-CoV-2 titer, using Ct values for the *ORF1ab* gene from qPCR-based detection tests as a marker for viral load in patients (Table 2). In addition, there was no association between chest radiographic results and SARS-CoV-2 viral load upon admission [odds ratio (OR) = 1.013, 95% confidence interval (CI) = 0.982–1.046,  $P = 0.403$ ]. However, evaluation of potential links between routine blood tests and SARS-CoV-2 viral load upon admission by univariate linear regression revealed a significant inverse relationship between high viral load and several markers of infection, including low white blood cell counts (coefficient = 0.056, 95% CI = 0.019–0.092,  $P = 0.003$ ), low neutrophil counts (coefficient = 0.039, 95% CI = 0.006–0.072,  $P = 0.021$ ), and low platelet counts (coefficient = 1.277, 95% CI = 0.233–2.322,  $P = 0.017$ ) (Table 3). These results thus indicated that SARS-CoV-2 viral load upon admission was associated with laboratory abnormalities rather than physical symptoms and radiographic chest abnormalities. In light of this association, we next investigated whether clinical features could be used to predict high SARS-CoV-2 viral loads at admission. Both univariate and multivariable linear regression analyses showed that age, sex, comorbidities, and COVID-19 vaccination status were not associated with Ct values from the initial SARS-CoV-2 detection assays (Table 4).

**Table 2** Effects of SARS-CoV-2 initial viral load on clinical symptoms

Clinical symptoms	Odds ratio (95% CI)	<i>P</i>
Fever	0.960 (0.903–1.019)	0.188
Cough	1.019 (0.992–1.047)	0.177
Nasal congestion	0.980 (0.923–1.041)	0.507
Rhinorrhea	0.987 (0.949–1.027)	0.531
Sore throat	1.032 (0.974–1.096)	0.295
Hoarseness	1.043 (0.968–1.129)	0.278
Shortness of breath	0.987 (0.892–1.093)	0.796
Wheeze	1.084 (0.976–1.224)	0.156
Nausea and vomiting	0.958 (0.917–1.000)	0.053
Diarrhea	0.995 (0.919–1.079)	0.901

SARS-CoV-2 severe acute respiratory syndrome coronavirus 2, CI confidence interval

**Table 3** Effects of SARS-CoV-2 initial viral load on laboratory findings

Blood routine parameters	Coefficient (95% CI)	<i>P</i>
C-reactive protein	0.069 (–0.047 to 0.184)	0.242
White blood cell count	0.056 (0.019–0.092)	0.003
Red blood cell count	–0.007 (–0.013 to –0.001)	0.023
Haemoglobin	–0.073 (–0.241 to 0.096)	0.397
Platelet count	1.277 (0.233–2.322)	0.017
Lymphocyte count	0.014 (–0.005 to 0.032)	0.162
Neutrophil count	0.039 (0.006–0.072)	0.021
Proportion of lymphocytes	–0.060 (–0.306 to 0.187)	0.635
Proportion of neutrophil	0.105 (–0.159 to 0.370)	0.436

SARS-CoV-2 severe acute respiratory syndrome coronavirus 2, CI confidence interval

### Factors associated with duration until SARS-CoV-2 viral clearance in children with COVID-19

We next investigated whether clinical characteristics were associated with the time to SARS-CoV-2 clearance. First, the examination of univariable linear regression models for SARS-CoV-2 viral clearance indicated that comorbidities (coefficient = 2.07, 95% CI = 0.90–3.23,  $P = 0.001$ ) were associated with a longer time until viral clearance, and increasing age (coefficient = –0.23, 95% CI = –0.33 to –0.13,  $P < 0.001$ ) or two doses of a COVID-19 vaccine (coefficient = –1.80, 95% CI = –2.86 to –0.74,  $P = 0.001$ ) were associated with a shorter time to viral clearance. However, further examination revealed that only comorbidities (coefficient = 2.77, 95% CI = 1.58–3.96,  $P < 0.001$ ) and increasing age (coefficient = –0.33, 95% CI = –0.54 to –0.11,  $P = 0.003$ ) remained significant in multivariable analysis (Table 5). Moreover, a significant interaction effect between age and comorbidity on time to virus clearance was detected ( $P < 0.001$ ) (Supplementary Table 1). Thus, regression analysis was further stratified by comorbidities. The subgroup analysis in Table 5 and along with Fig. 2 showed that the negative association between age and time to virus clearance remained significant only in patients without underlying diseases (coefficient = –0.37, 95% CI = –0.46 to –0.27,  $P < 0.001$  in the univariable model; coefficient = –0.37, 95% CI = –0.50 to –0.23,  $P < 0.001$  in the multivariable model) but not in patients with underlying diseases (coefficient = 0.25, 95% CI = –0.12–0.63,  $P = 0.184$  in the univariable model; coefficient = 0.18, 95% CI = –0.27–0.62,  $P = 0.425$  in the multivariable model) (Table 5). Furthermore, the influence of two doses of COVID-19 vaccine on time to SARS-CoV-2 clearance was not significant after adjustment for age, sex, and comorbidity status in multivariable analysis

**Table 4** Univariate and multivariable linear regression analyses of impact factors for initial viral load in the study patients

Impact factors	Univariate analysis		Multivariable analysis	
	Coefficient (95% CI)	<i>P</i>	Coefficient (95% CI)	<i>P</i>
Age	0.35 (– 0.13 to 0.83)	0.149	0.63 (– 0.14 to 1.40)	0.106
Male sex	–	–	–	–
Female sex	1.21 (– 0.99 to 3.41)	0.280	1.29 (– 0.97 to 3.55)	0.262
Without co-morbidity	–	–	–	–
With co-morbidity	2.42 (– 0.26 to 5.11)	0.077	2.46 (– 0.34 to 5.26)	0.085
Vaccination status-unvaccinated	–	–	–	–
Vaccination status-one dose	– 2.54 (– 6.65 to 1.57)	0.224	– 2.72 (– 6.80 to 1.35)	0.189
Vaccination status-two doses	– 1.39 (– 3.69 to 0.91)	0.234	– 1.55 (– 3.92 to 0.82)	0.198

*CI* confidence interval

**Table 5** Univariate and multivariable linear regression analyses of impact factors for time until viral clearance in all patients and the patients without or with underlying disease

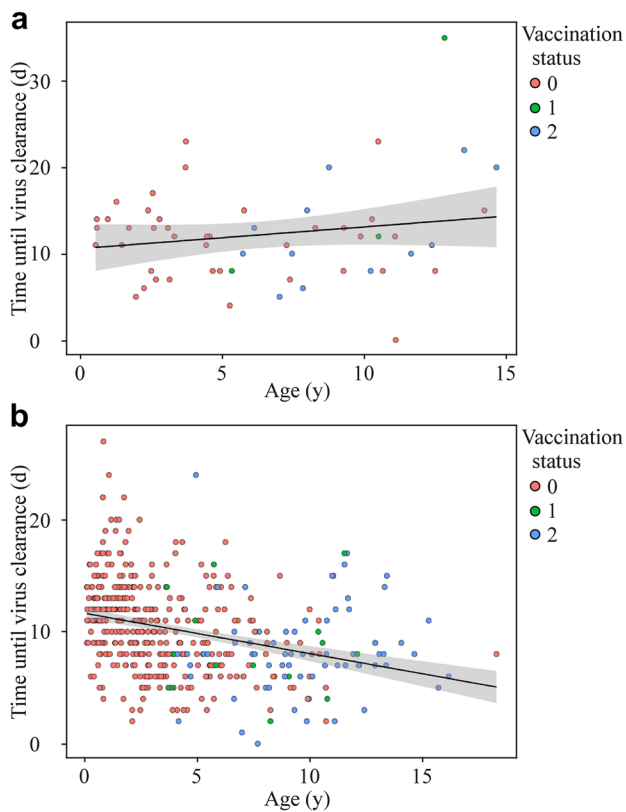
Impact factors	Univariate analysis		Multivariable analysis	
	Coefficient (95% CI)	<i>P</i>	Coefficient (95% CI)	<i>P</i>
<b>All patients</b>				
Age	– 0.23 (– 0.33 to – 0.13)	<0.001	– 0.33 (– 0.54 to – 0.11)	0.003
Male sex	–	–	–	–
Female sex	0.29 (– 0.45 to 1.03)	0.438	0.19 (– 0.55 to 0.92)	0.619
Without co-morbidity	–	–	–	–
With co-morbidity	2.07 (0.90–3.25)	0.001	2.77 (1.58–3.96)	<0.001
Vaccination status-unvaccinated	–	–	–	–
Vaccination status-one dose	– 0.42 (– 2.46 to 1.62)	0.687	0.58 (– 1.50 to 2.66)	0.584
Vaccination status-two doses	– 1.80 (– 2.86 to – 0.74)	0.001	– 0.37 (– 1.71 to 0.98)	0.594
<b>Patients without underlying disease</b>				
Age	– 0.37 (– 0.46 to – 0.27)	<0.001	– 0.37 (– 0.50 to – 0.23)	<0.001
Male sex	–	–	–	–
Female sex	0.55 (– 0.17 to 1.28)	0.134	0.61 (– 0.10 to 1.31)	0.092
Vaccination status-unvaccinated	–	–	–	–
Vaccination status-one dose	– 1.97 (– 4.01 to 0.007)	0.058	– 0.49 (– 2.56 to 1.57)	0.640
Vaccination status-two doses	– 2.31 (– 3.33 to – 1.29)	<0.001	0.06 (– 1.25 to 1.38)	0.925
<b>Patients with underlying disease</b>				
Age	0.25 (– 0.12 to 0.63)	0.184	0.18 (– 0.27 to 0.62)	0.425
Male sex	–	–	–	–
Female sex	– 1.19 (– 4.25 to 1.87)	0.439	– 0.24 (– 3.52 to 3.05)	0.886
Vaccination status-unvaccinated	–	–	–	–
Vaccination status-one dose	6.68 (– 0.05 to 13.41)	0.052	5.79 (– 1.40 to 12.98)	0.112
Vaccination status-two doses	0.85 (– 2.85 to 4.55)	0.647	0.06 (– 4.12 to 4.23)	0.978

*CI* confidence interval

(coefficient = – 0.37, 95% CI = – 1.71–0.98, *P* = 0.594) (Table 5). In addition, we also noticed that only comorbidities (coefficient = 3.58, 95% CI = 2.17–5.00, *P* < 0.001) were associated with a longer time until viral clearance, and neither age nor vaccination status was associated with the time until viral clearance in the subgroup above three years of age (Supplementary Table 2).

## Discussion

As the COVID-19 pandemic spread, so did its effects on the pediatric population. Although it was initially argued that children were less susceptible to SARS-CoV-2 infection, increasing evidence indicates that children have similar rates of SARS-CoV-2 infection as adults [11]. Significant



**Fig. 2** The time until viral clearance among patients of different ages and vaccination statuses with (a) or without (b) underlying diseases

differences between COVID-19 in children and adults include a higher proportion of children with asymptomatic infection than adults, and even among children with symptomatic infection, the disease is most often mild [12, 13]. From the beginning of 2022, SARS-CoV-2 infections fueled by the Omicron variant have been predominantly responsible for outbreaks in China, especially in Shanghai. While the Omicron variant exhibits decreased levels of virulence, several reports have described a range of severe outcomes and considerable mortality rates among adults [14]. The results of this study show that children of all ages are susceptible to the Omicron variant, with no significant difference between sexes. Although clinical manifestations in children infected with Omicron are not severe, younger children are more likely to display abnormalities on chest radiography. Moreover, a high SARS-CoV-2 viral load upon admission is associated with leukocytopenia, neutropenia, and thrombocytopenia but not with physical symptoms and radiographic chest abnormalities. In addition, the time until SARS-CoV-2 viral clearance is longer in younger children or those with underlying diseases.

More than half a million cases of SARS-CoV-2 virus were identified in Shanghai in March and April of 2022. The infection rate in children was also much higher than

that reported for previous outbreaks. However, this unfortunate outcome for children could be expected, in light of data showing that the Omicron variant has higher transmissibility than any of the previous ten SARS-CoV-2 variants [15]. The high number of mutations in the spike protein facilitates at least partial immune evasion for Omicron, even from polyclonal antibody responses, frequently facilitating reinfection and vaccine breakthroughs [16]. One recent study revealed that Omicron can replicate quickly in primary cultures of human airway cells at rates faster than those reported for the Delta variant, which was previously the dominant variant of concern. The Omicron spike protein also binds to its primary receptor, human angiotensin-converting enzyme 2, with higher affinity than other variants. These results show that Omicron can infect more cells in the respiratory epithelium than other variants, increasing its infectiousness at lower exposure doses and enhancing its intrinsic transmissibility [17].

Fortunately, no seriously ill pediatric patients infected with the SARS-CoV-2 Omicron variant required mechanical ventilation in this study, regardless of whether they had underlying diseases. COVID-19 disease severity appeared to be lower during the Omicron period than during other previous periods of high transmission [18]. In a recent *in vivo* study, the SARS-CoV-2 Omicron variants exhibited less pathogenicity than other earlier SARS-CoV-2 strains [19]. Additionally, consistent with previous reports in children, we found that the SARS-CoV-2 viral load at the time of hospital admission was not associated with disease severity. Asymptomatic children can also carry high viral loads and shed culturable viruses [20]. Therefore, although COVID-19 severity is milder in pediatric populations than in adult populations, children can still potentially serve as community reservoirs for actively replicating the virus.

This study showed that increasing age or two doses of a COVID-19 vaccine were associated with a shorter time to viral clearance in a univariable model. However, only increasing age remained significant in multivariable analysis. In China, inactivated COVID-19 vaccines are available for children older than three years [7]. In the subgroup above three years of age, there was no correlation between age or vaccination status and the time to viral clearance. The difference between these results may be related to the high correlation between COVID-19 vaccination status and age. Given that Shanghai successively launched vaccination programs for children aged 12–17, 6–11 and 3–5 years old from August to December 2021, 101 (36.2%) patients above three years of age without underlying diseases were vaccinated in the present study. Among them, the vaccination coverage rate in patients aged seven years or above reached 65.8%. Additionally, 18 (39.1%) children over three years of age with comorbidities were vaccinated, of whom 15 were over seven years old. Obviously, older age was related to a high

vaccination rate. Thus, determining which factor played a vital role in shortening viral clearance when both were associated was difficult in this study.

The widespread COVID-19 vaccine is a critical tool to combat COVID-19 in children. One recent study showed that two doses of the COVID-19 mRNA vaccine could provide limited protection against symptomatic disease caused by the Omicron variant, but that protection waned over time [21]. Data from an in vitro study indicated that this highly infectious variant can be neutralized after a boost with immune sera elicited by inactive COVID-19 vaccines [22]. A recent study demonstrated that a three-dose inactivated vaccine is a protective factor for severe COVID-19 in adults infected with the Omicron variant; however, no significant correlation was observed between vaccination and disease severity in children. Furthermore, the duration of hospitalization and recovery was shorter for those who had received two or three doses of inactivated vaccine than for unvaccinated patients for patients across all age groups, but no difference was observed in pediatric patients [5]. Nevertheless, the sample size of this study was too small to be conclusive. Our findings also suggest that COVID-19 disease severity is not associated with vaccination status in children. Two doses of the COVID-19 vaccine may be beneficial in shortening the time to viral clearance. Whether two doses of COVID-19 vaccine can be used as an independent protective factor in shortening the time to viral clearance remains incompletely defined. Thus, additional well-designed cohort studies are required to explore the safety and efficacy of inactivated vaccines in children to improve current vaccination policies.

This study has several other limitations. First, this was a single-center study; a larger cohort including different regional populations in a multicenter study could provide more robust statistical support for our conclusions. Second, chest CT scans were unavailable for the large majority of cases in this study. Because the amount of radiation populations received in CT examination was higher than that in X-rays, and the patients in this study were nonsevere at the time of admission. Therefore, the determination of infection in the lungs relied on chest X-rays in this study.

In conclusion, this study describes the clinical characteristics of pediatric cases infected with the Omicron variant of SARS-CoV-2. Omicron variant infection in children is associated with less severe disease. A high SARS-CoV-2 viral load upon admission is associated with leukocytopenia, neutropenia, and thrombocytopenia. In addition, the time until SARS-CoV-2 viral clearance is longer in younger children or those with underlying diseases.

**Supplementary Information** The online version contains supplementary material available at <https://doi.org/10.1007/s12519-022-00621-6>.

**Acknowledgements** We thank all the hospital staff members who worked hard under this pandemic's pressure. We also thank Bin Zhang (Medical Department, Shanghai Children's Medical Center, National Children's Medical Center) for his effort in collecting the information used in this study. In particular, we would like to thank all our patients who were willing to participate in the study.

**Author contributions** SN, WYF, CYW, and FXY contributed equally to this study. CQ and ZH conceived and designed this study. WYF, CYW, ZM, WWY, TMY, SBY, PQH, and MJ performed the study. FXY analyzed the data. SN performed the study and wrote the manuscript. All authors approved the final version of the manuscript.

**Funding** This work was funded by the Innovative Research Team of High-Level Local Universities in Shanghai (SHSMU-ZDCX20212800), Science and Technology Commission Shanghai Municipality (20JC1410200, 20JC1410204), 2021 Shanghai University Teacher Training Plan-Industry University Research Practice Plan Project (EYJ26.RL017), Shanghai Municipal Health Commission (2019SY049), and Shanghai Medical Leading Talents Program (2019LJ22).

**Data availability** The datasets generated during and/or analyzed during the current study are available from the corresponding author on reasonable request.

## Declarations

**Ethical approval** The study was approved by the Institutional Review Board and the Ethics Committee of Shanghai Children's Medical Center (SCMCIRB-K2022053-3).

**Conflict of interest** No financial or non-financial benefits have been received or will be received from any party related directly or indirectly to the subject of this article. Nan Shen is a member of the Editorial Board for *World Journal of Pediatrics*. The paper was handled by the other Editor and has undergone a rigorous peer review process. Nan Shen was not involved in the journal's review of, or decisions related to, this manuscript.

## References

1. Zhang X, Zhang W, Chen S. Shanghai's life-saving efforts against the current omicron wave of the COVID-19 pandemic. *Lancet*. 2022;399:2011–2.
2. Ai J, Wang X, He X, Zhao X, Zhang Y, Jiang Y, et al. Antibody evasion of SARS-CoV-2 Omicron BA.1, BA.1.1, BA.2, and BA.3 sub-lineages. *Cell Host Microbe*. 2022;30:1077–83.
3. Gu H, Krishnan P, Ng DYM, Chang LDJ, Liu GYZ, Cheng SSM, et al. Probable transmission of SARS-CoV-2 Omicron variant in quarantine hotel, Hong Kong, China, November 2021. *Emerg Infect Dis*. 2022;28:460–2.
4. Butt AA, Dargham SR, Loka S, Shaik RM, Chemaitelly H, Tang P, et al. COVID-19 disease severity in children infected with the Omicron variant. *Clin Infect Dis*. 2022. <https://doi.org/10.1093/cid/ciac275>.
5. Zheng H, Cao Y, Chen X, Wang F, Hu Y, Song W, et al. Disease profile and plasma neutralizing activity of post-vaccination Omicron BA1 infection in Tianjin, China: a retrospective study. *Cell Res*. 2022;32:781–4.



6. Levy N, Koppel JH, Kaplan O, Yechiam H, Shahar-Nissan K, Cohen NK, et al. Severity and incidence of multisystem inflammatory syndrome in children during 3 SARS-CoV-2 pandemic waves in Israel. *JAMA*. 2022;327:2452–4.
7. Xue FX, Shen KL. COVID-19 in children and the importance of COVID-19 vaccination. *World J Pediatr*. 2021;17:462–6.
8. Lopez Bernal J, Andrews N, Gower C, Gallagher E, Simmons R, Thelwall S, et al. Effectiveness of Covid-19 vaccines against the B.1.617.2 (Delta) variant. *N Engl J Med*. 2021;385:585–94.
9. Andrews N, Tessier E, Stowe J, Gower C, Kirsebom F, Simmons R, et al. Duration of protection against mild and severe disease by Covid-19 vaccines. *N Engl J Med*. 2022;386:340–50.
10. Abu-Raddad LJ, Chemaiteilly H, Butt AA, National Study Group for COVID-19 Vaccination. Effectiveness of the BNT162b2 Covid-19 vaccine against the B.1.1.7 and B.1.351 variants. *N Engl J Med*. 2021;385:187–9.
11. Dong Y, Mo X, Hu Y, Qi X, Jiang F, Jiang Z, et al. Epidemiology of COVID-19 among children in China. *Pediatrics*. 2020;145:e20200702.
12. Pinninti SG, Pati S, Poole C, Latting M, Seleme MC, Yarbrough A, et al. Virological characteristics of hospitalized children with SARS-CoV-2 infection. *Pediatrics*. 2021;147:e2020037812.
13. Cohen CA, Li APY, Hachim A, Hui DSC, Kwan MYW, Tsang OTY, et al. SARS-CoV-2 specific T cell responses are lower in children and increase with age and time after infection. *Nat Commun*. 2021;12:4678.
14. Cheung PH, Chan CP, Jin DY. Lessons learned from the fifth wave of COVID-19 in Hong Kong in early 2022. *Emerg Microbes Infect*. 2022;11:1072–8.
15. Kim S, Nguyen TT, Taitt AS, Jhun H, Park HY, Kim SH, et al. SARS-CoV-2 Omicron mutation is faster than the chase: multiple mutations on spike/ACE2 interaction residues. *Immune Netw*. 2021;21:e38.
16. Viana R, Moyo S, Amoako DG, Tegally H, Scheepers C, Althaus CL, et al. Rapid epidemic expansion of the SARS-CoV-2 Omicron variant in southern Africa. *Nature*. 2022;603:679–86.
17. Peacock TP, Brown JC, Zhou J, Thakur N, Newman J, Kugathasan R, et al. The SARS-CoV-2 variant, Omicron, shows rapid replication in human primary nasal epithelial cultures and efficiently uses the endosomal route of entry. *BioRxiv*. 2022. <https://doi.org/10.1101/2021.12.31.474653> (Preprint).
18. Iuliano AD, Brunkard JM, Boehmer TK, Peterson E, Adjei S, Binder AM, et al. Trends in disease severity and health care utilization during the early Omicron variant period compared with previous SARS-CoV-2 high transmission periods—United States, December 2020–January 2022. *MMWR Morb Mortal Wkly Rep*. 2022;71:146–52.
19. Uraki R, Kiso M, Iida S, Imai M, Takashita E, Kuroda M, et al. Characterization and antiviral susceptibility of SARS-CoV-2 Omicron/BA.2. *Nature*. 2022;607:119–27.
20. Yonker LM, Boucau J, Regan J, Choudhary MC, Burns MD, Young N, et al. Virologic features of severe acute respiratory syndrome coronavirus 2 infection in children. *J Infect Dis*. 2021;224:1821–9.
21. Andrews N, Stowe J, Kirsebom F, Toffa S, Rickeard T, Gallagher E, et al. Covid-19 vaccine effectiveness against the Omicron (B.1.1.529) variant. *N Engl J Med*. 2022;386:1532–46.
22. Ai J, Zhang H, Zhang Y, Lin K, Zhang Y, Wu J, et al. Omicron variant showed lower neutralizing sensitivity than other SARS-CoV-2 variants to immune sera elicited by vaccines after boost. *Emerg Microbes Infect*. 2022;11:337–43.

**Publisher's Note** Springer Nature remains neutral with regard to jurisdictional claims in published maps and institutional affiliations.

Springer Nature or its licensor holds exclusive rights to this article under a publishing agreement with the author(s) or other rightsholder(s); author self-archiving of the accepted manuscript version of this article is solely governed by the terms of such publishing agreement and applicable law.

## Authors and Affiliations

Nan Shen<sup>1</sup> · Yu-Fen Wu<sup>2</sup> · Yi-Wei Chen<sup>3</sup> · Xiao-Yan Fang<sup>4</sup> · Min Zhou<sup>5</sup> · Wen-Yu Wang<sup>6</sup> · Ming-Yu Tang<sup>7</sup> · Qiu-Hui Pan<sup>8,9</sup> · Ji Ma<sup>8,9</sup> · Hao Zhang<sup>10</sup> · Qing Cao<sup>1</sup> 

<sup>1</sup> Department of Infectious Disease, Shanghai Children's Medical Center, National Children's Medical Center, School of Medicine, Shanghai Jiao Tong University, Dongfang Rd. 1678, Shanghai 200127, China

<sup>2</sup> Department of Outpatient and Emergency, Shanghai Children's Medical Center, National Children's Medical Center, School of Medicine, Shanghai Jiao Tong University, Shanghai 200127, China

<sup>3</sup> Department of Cardiology, Shanghai Children's Medical Center, National Children's Medical Center, School of Medicine, Shanghai Jiao Tong University, Shanghai 200127, China

<sup>4</sup> Department of Psychosomatic Medicine and Psychotherapy, Klinikum Rechts Der Isar, Technische Universität München, 81675 Munich, Germany

<sup>5</sup> Medical Department, Shanghai Children's Medical Center, National Children's Medical Center, School of Medicine, Shanghai Jiao Tong University, Shanghai 200127, China

<sup>6</sup> Department of Gastroenterology, Shanghai Children's Medical Center, National Children's Medical Center, School of Medicine, Shanghai Jiao Tong University, Shanghai 200127, China

<sup>7</sup> Department of Respiratory Medicine, Shanghai Children's Medical Center, National Children's Medical Center, School of Medicine, Shanghai Jiao Tong University, Shanghai 200127, China

<sup>8</sup> Department of Laboratory Medicine, Shanghai Children's Medical Center, National Children's Medical Center, School of Medicine, Shanghai Jiao Tong University, Shanghai 200127, China

<sup>9</sup> Shanghai Key Laboratory of Clinical Molecular Diagnostics for Pediatrics, Shanghai 200127, China

<sup>10</sup> Heart Center and Shanghai Institute of Pediatric Congenital Heart Disease, Shanghai Children's Medical Center, National Children's Medical Center, School of Medicine, Shanghai Jiao Tong University, Dongfang Rd. 1678, Shanghai 200127, China