

Calculation of periodic roof weighting interval in longwall mining using finite element method

Navid Hosseini · Kamran Goshtasbi ·
Behdeen Oraee-Mirzamani · Mehran Gholinejad

Received: 27 October 2011 / Accepted: 25 January 2013 / Published online: 5 February 2013
© Saudi Society for Geosciences 2013

Abstract The state of periodic loading and the interval of periodic roof weighting have an important role in geomechanical stability and, hence, in the continuity of longwall mining operations. In this paper, the mechanism of roof caving in longwall mining—together with the effect of engineering and geomechanical properties of surrounding rock masses on the magnitude and timing of periodic loading—is studied. For this purpose, a longwall mine is first modeled using Phase2 software, and then, by simulating the roof caving process, the periodic roof weighting intervals is calculated. Based on the numerical modeling, the first roof weighting interval and the periodic roof weighting interval are calculated as 27.2 and 12.1 m, respectively. Sensitivity analysis is then applied to determine the effect of changes in the mechanical properties of the rock mass, especially in the main roof and immediate roof. The results of the analysis show that as GSI and quality of the immediate roof increases, the periodic roof weighting interval also increases. Hence, the applied algorithm in this research study can effectively be utilized to calculate the periodic roof weighting interval in the longwall mining method.

Keywords Longwall mining · Periodic roof weighting interval · Finite element method · Phase2 software

N. Hosseini (✉) · M. Gholinejad
Department of Mining Engineering, South Tehran Branch, Islamic Azad University, Tehran, Iran
e-mail: n_hosseini@azad.ac.ir

K. Goshtasbi
Department of Mining Engineering, Tarbiat Modares University, Tehran, Iran

B. Oraee-Mirzamani
Centre for Environmental Policy, Imperial College London, London, UK

Introduction

The process of periodic loading in longwall mining is complex and significantly influences safety, stability, performance, and the productivity of mining operations (Singh and Singh 2010). Periodic loading and the periodic roof weighting interval are related to geomechanical conditions of the surrounding rock mass, particularly to the immediate roof (Peng 2006). Roof caving mechanism and the rate of advance represent additional influences on the state of periodic loading.

The roof weighting interval increases due to a delay in caving (or un-caving) of the roof and a great deal of subsequent pressure on the power support system, which affects the mining operation (Peng 2008). Therefore, it is necessary to study the process of periodic loading in longwall mining, especially in a mechanization mining operation. Up until now, several studies have been carried out to determine the status of periodic loading, first roof weighting interval, periodic roof weighting interval, and various equations have been derived (Peng 2006; Peng 2008; Jeremic 1985; Trueman et al. 2009; Monjezi et al. 2011). However, due to their analytical and experimental natures, these equations have some limits (Trueman et al. 2009). Generally in these equations, providing the initial assumptions is difficult in addition to the fact that their flexibility to different conditions is limited. Therefore, in this study, a new approach based on numerical modeling has been used to estimate the mechanism of periodic loading and calculate the roof weighting interval. Due to some difficulties—including structure of longwall panel, stress distribution, and caving mechanism—the finite element method has been selected for numerical modeling (Oraee et al. 2009). The Phase2 software is used for modeling, which is provided by Rocscience Inc. as a well-known finite element code (ROCSOFT 2011). In order to perform the modeling process using Phase2, the

material properties and geometry of the problem are first defined. For this paper, the state of periodic loading in one of the longwall mining panels of Tabas coal mine in Iran (Hosseini 2010) has been simulated as a case study.

Immediate roof

The immediate roof is the lowest part of the roof that is caved while advancing the power supports. When modeling the roof weighting interval, the thickness of the immediate roof should be calculated. For this purpose, Eqs. 1 to 3 are used (Peng 2006, 2008).

$$h_{im} = \frac{H - d}{M - 1} \quad (1)$$

$$d_0 \geq d \quad (2)$$

$$d = c.H \quad (3)$$

where h_{im} is the thickness of the immediate roof, H is the mining height, d is the sagging of the lowest un-caved strata, d_0 is the maximum allowable sagging (without breaking) of the lowest un-caved strata, c is the ratio of the actual sagging of the strata before caving to the mining height, and M is bulking factor of the immediate roof. The parameters M and c are dependent on the rock type and the mechanical properties of the immediate roof, respectively. In the case of Tabas coal mine, they have been determined to be 1.25 and 0.50, respectively (Hosseini 2010). Furthermore, the coal seam thickness (mining height) has previously been determined to be 1.8 m (Hosseini 2010). Therefore, the thickness of the immediate roof is calculated as 3.6 m.

In situ stress

The state of in situ stress can significantly influence the geomechanical behavior of the rock mass and can have major effects on the caving mechanism (Brady and Brown 2004). Equations 4 to 6 are used to calculate the state of in situ stress (Sheorey 1997).

$$\sigma_v = \gamma.Z \quad (4)$$

$$k = 0.25 + 7E_h \left[0.001 + \frac{1}{Z} \right] \quad (5)$$

$$\sigma_h = k.\sigma_v \quad (6)$$

where σ_v is the vertical in situ stress, γ is the average density of overburden, Z is the depth below the ground surface, k is the ratio of horizontal to vertical in situ stress, E_h is the average horizontal deformability modulus, and σ_h is the horizontal in situ stress. The vertical and horizontal in situ stresses in the Tabas coal mine have previously been calculated to be 12.50 and 4.71 MPa, respectively (Hosseini 2010).

Designation of rock mass properties in Phase2

In order to perform numerical simulation, the mechanical properties of the immediate roof, floor, and caving material (goaf area) must be defined. In the Tabas coal mine, roof and floor strata are a combination of sandstone, siltstone, and mudstone (Hosseini 2010). The Hoek–Brown rock failure criterion has been selected based on the geomechanical behavior of rock mass for the modeling process in Phase2 (Hoek et al. 2002). Furthermore, the elastic properties of material and the type of material are defined as isotropic and plastic, respectively (ROCSCIENCE 2011; Hosseini 2010). The average geomechanical properties of the roof, floor, and coal are presented in Table 1 where σ_{ci} is the uniaxial compressive strength of intact rock, GSI is the geological strength index, m_i is the intact rock parameter, γ is the density, E_i is the Young's modulus of intact rock, ν is the Poisson's ratio, σ_{Ti} is the tensile strength of intact rock, and τ_i is the shear strength of intact rock.

The RocData software (ROCSCIENCE 2011) is used to estimate the rock mass properties of roof, floor, and coal seam since the samples of intact rock are used in laboratory tests. RocData, which is also provided by Rocscience Inc., determines the soil and rock mass strength parameters by analyzing laboratory or field triaxial/direct shear data. This program can fit the linear failure criterion (Mohr–Coulomb strength model) and three other nonlinear failure criteria (the generalized Hoek–Brown, Barton–Bandis, and Power Curve strength models) to test the data in order to estimate the full

Table 1 Geomechanical properties of materials (Hosseini 2010)

Parameters	Roof and floor	Coal
σ_{ci} (MPa)	25.6	7
GSI	67	43
m_i	12	10
γ (kg/m ³)	2,730	1,350
E_i (GPa)	2.83	0.26
ν	0.31	0.29
σ_{Ti} (MPa)	2.5	0.1
τ_i (MPa)	17.66	5.5

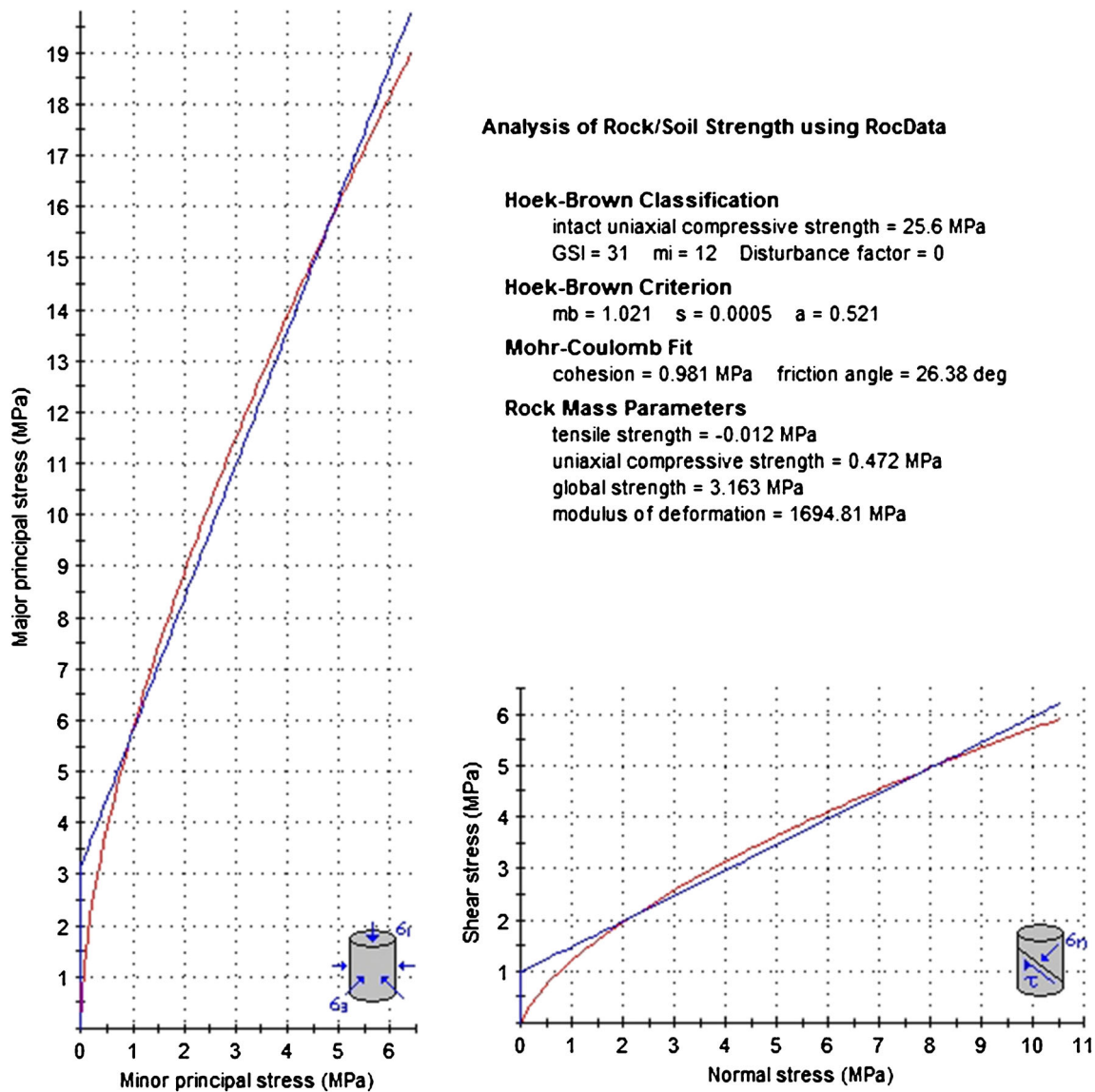


Fig. 1 Output of RocData software

geomechanical parameters of rock mass (ROCSCIENCE 2011). An example of the calculated results of RocData is shown in Fig. 1.

Table 2 Output of RocData software

Parameters	Roof and floor	Coal
m_b	1.021	0.554
S	0.0005	0.0001
a	0.521	0.547
C (MPa)	0.981	0.188
ϕ (deg)	26.38	21.16
σ_T (MPa)	-0.0117	-0.0016
σ_c (MPa)	0.472	0.051
σ_{cm} (MPa)	3.163	0.549
E_m (MPa)	1694.81	444.17

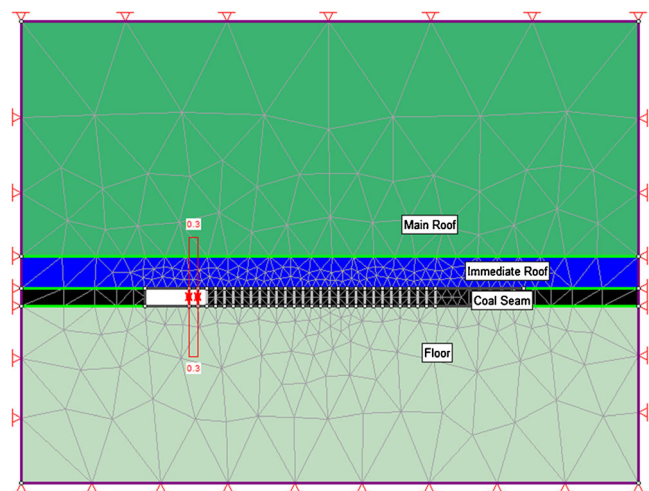


Fig. 2 Created model in Phase2, stage 1

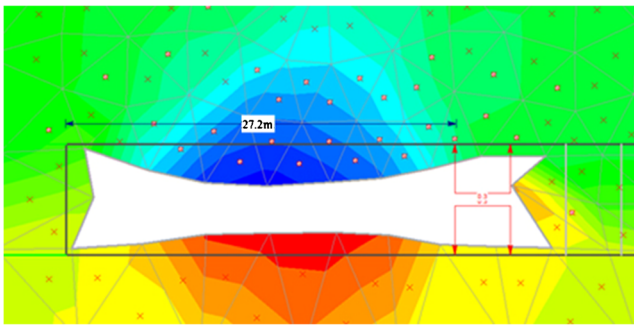


Fig. 3 Calculation of first roof weighting interval

Input parameters of RocData include uniaxial compressive strength of intact rock (σ_{ci}), (GSI), intact rock parameter (m_i), and disturbance factor (D), all of which have been shown in Table 1.

Due to rock quality and nonblasting extraction in Tabas coal mine, the disturbance factor is selected to be zero (Hoek et al. 1995). The results of RocData are shown in Table 2, where m_b , S , and a are the rock mass parameters; C is the cohesion; ϕ is internal friction angle; σ_T is tensile strength of rock mass; σ_c is uniaxial compressive strength of rock mass; σ_{cm} is global strength of rock mass; and E_m is deformation modulus of rock mass.

Mechanical properties of caved materials (goaf)

With the advancement of the face, the caved materials in the goaf area are gradually compressed, meaning that the mechanical properties of caved materials are a function of time. Based on the empirical studies conducted, the mechanical properties of goaf material can be calculated using Eqs. 7 to 9 (Singh and Singh 2010; Jeremic 1985).

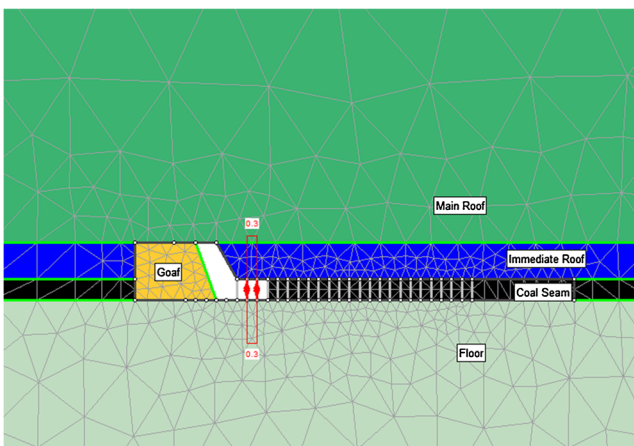


Fig. 4 Numerical model after roof caving

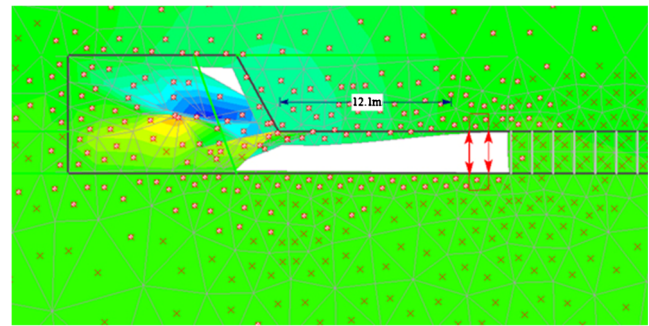


Fig. 5 Calculation of the periodic roof weighting interval

$$\gamma = 1,600 + 800(1 - e^{-1.25t}) \tag{7}$$

$$E = 15 + 175(1 - e^{-1.25t}) \tag{8}$$

$$\nu = 0.05 + 0.2(1 - e^{-1.25t}) \tag{9}$$

where γ is the density, E is the deformation modulus, ν is the Poisson’s ratio, and t is the time. Based on this study and other mechanical properties (Hosseini 2010), the density, deformation modulus, and Poisson’s ratio of caved materials are calculated to be 1,678 kg/cm³, 32.12 MPa, and 0.07, respectively.

Numerical modeling and calculation of roof weighting interval

In order to perform the numerical modeling, the finite element software, Phase2, has been used. The first stage

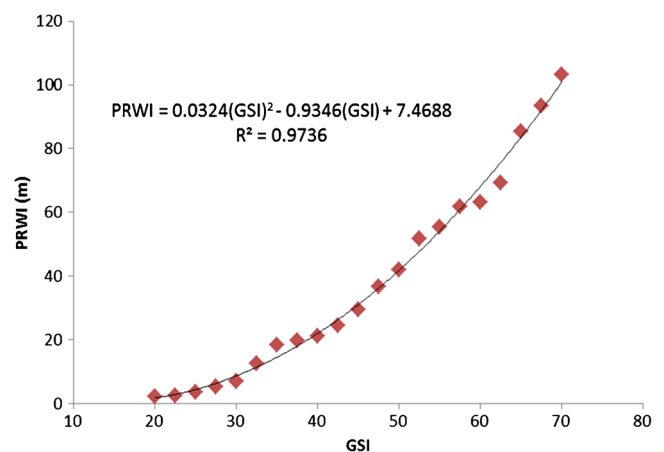


Fig. 6 Periodic roof weighting interval vs. GSI

of the model consists of the definition of the geometry of the roof model and situation, immediate roof, floor, coal seam, and goaf, as well as the geomechanical properties of materials. Secondly, the geomechanical properties of the material in each part are assigned. In order to simulate the power support system, an equally distributed normal force is applied on the roof and floor. The advancement in each cutting cycle is defined in a separate stage. Overall, 20 stages have been defined within the model. In each stage, the distributed normal force (the equivalent force of power support system) advances with the face. Moreover, the part of immediate roof that yields is replaced with the caved material. Figure 2 show the stage 1 of the created model in Phase2, and Fig. 3 shows the calculation of the first roof weighting interval.

As it is evident in Figs. 3 and 4, with the advancement of the face and the power support system, the first caving zone is created in the immediate roof. In order to determine the first roof weighting interval, the yielded element of immediate roof has to be considered. Based on the results of numerical modeling, the first roof weighting interval is calculated as 27.2 m. After the first caving, the yielded elements of immediate roof are replaced with caved materials (shown in Fig. 4). Afterwards, the face of the longwall is advanced gradually along with the power support that is applied in the model as a distributed normal force. When the unsupported length of roof reaches 12.1 m, the immediate roof elements are yielded again. In other words, the roof is caved. Therefore, the periodic roof weighting interval is calculated to be 12.1 m (shown in Fig. 5).

Sensitivity analysis

The geological strength index (GSI) (Hoek et al. 1995; Hoek and Brown 1997) is one of the important parameters that describe the geomechanical behavior of a given rock mass. This index is easy to estimate and is based on several equations. It is also related to other mechanical properties of rock, such as RMR, and Q (Edelbro 2003; Singh and Goel 1999). In this section, the state of the immediate roof is described based on the GSI. In order to determine the effect of changes in the mechanical properties of immediate roof on periodic roof weighting interval (PRWI), a sensitivity analysis has been conducted. For this purpose, the immediate roofs with different GSIs are defined in the numerical model, and the PRWIs are calculated. The results can be seen in Fig. 6.

The PRWI increases as the GSI of the immediate roof is increased. This relationship can be defined based on Eq. 10.

$$\text{PRWI} = 0.0324(\text{GSI})^2 - 0.9346(\text{GSI}) + 7.4688 \quad (10)$$

Conclusions

In the design process of longwall mining and the selection of power support system, the periodic loading must be considered. Therefore, calculating the first and periodic roof weighting interval plays an important role in design process, safety, performance, and the operation of the longwall mining method. Several methods are currently available that can be used in order to calculate the periodic loading and periodic roof weighting interval; however, due to some assumptions and other limitations, they are often difficult to use. The method presented in this study—a new approach based on numerical modeling—can be used to calculate the periodic loading and PRWI. Furthermore, this approach is simple and flexible since it is a numerical method. In addition, sensitivity analysis shows that the periodic loading is dependent on the geomechanical properties of the immediate roof. Therefore, PRWI is calculable based on the mechanical properties of the immediate roof, such as GSI. Generally, with the increase in quality of the immediate roof, the PRWI increases and subsequently the applied load on power support system is increased to the extent that it has the potential to threaten mining operations.

References

- Brady BHG, Brown ET (2004) Rock mechanics for underground mining. George Allen & Unwin, London
- Edelbro C (2003) Rock mass strength: a review, Technical Reports, Luleå University of Technology, Department of Civil Engineering Division of Rock Mechanics
- Hoek E, Brown ET (1997) Practical estimates of rock mass strength. *Int J Rock Mech Min Sci Geomech Abstr* 34(8):1165–1186
- Hoek E, Kaiser PK, Bawden WF (1995) Support of underground excavations in hard rock. A. A. Balkema, Rotterdam
- Hoek E, Carranza-Torres C and Corkum B (2002) Hoek-Brown failure criterion—2002 Edition, Rocscience Inc. <<http://www.rocscience.com/hoek/references/H2002.pdf>>; [accessed 10.20.11]
- Hosseini N (2010) The geo-mechanical study of panel II—Tabas Collieries. Technical Report, Maadankavan Bisotun Co., Tehran, Iran
- Jeremic ML (1985) Strata mechanics in coal mining. A.A BALKEMA, Netherlands
- Monjezi M, Hesami SM, Khandelwal M (2011) Superiority of neural networks for pillar stress prediction in bord and pillar method. *Arab J Geosci* 4(5):845–853

- Oraei K, Hosseini N and Gholinejad M (2009) Estimation of coal pillar strength by finite difference model. Proceedings of the 2009 Coal Operators Conference, Wollongong, Australia, 53–60
- Peng SS (2006) Longwall mining, 2nd edition, Society for Mining, Metallurgy, and Exploration, Inc. (SME)
- Peng SS (2008) Coal mine ground control, 3rd edition, Society for Mining, Metallurgy, and Exploration, Inc. (SME)
- ROCSCIENCE Inc., Phase2 software, RocData Software (2011) Rocscience Inc. <<http://www.rocscience.com>>; [accessed 10.13.11]
- Sheorey PR (1997) Empirical rock failure criteria. A. A. Balkema, Rotterdam
- Singh B, Goel RK (1999) Rock mass classification—a practical approach in civil engineering. Elsevier, Netherlands
- Singh GSP, Singh UK (2010) Numerical modeling study of the effect of some critical parameters on caving behavior of strata and support performance in a longwall working. Rock Mech Rock Eng 43(4):475–489
- Trueman R, Lyman G, Cocker A (2009) Longwall roof control through a fundamental understanding of shield–strata interaction. Int J Rock Mech Min Sci 46(2):371–380