



Overall assessment system of combined mammography and ultrasound for breast cancer screening in Japan

Koji Ohnuki^{1,2} · Eriko Tohno^{1,2} · Hiroko Tsunoda² · Takayoshi Uematsu¹ · Yasuo Nakajima¹

Received: 31 August 2020 / Accepted: 9 December 2020 / Published online: 2 January 2021
© The Author(s) 2021

Abstract

Mammography is the only screening method with evidence in support of reduced breast cancer mortality, but yields poor accuracy outcomes in women with dense breast tissue. The Japan Strategic Anti-cancer Randomized Trial (J-START) was conducted as part of the measures implemented to deal with women with dense breast tissue. Although the sensitivity was increased, the specificity was significantly lower in the intervention group because further examination was required in all positive cases classified by either mammography or ultrasound in the J-START. To address the issue, an overall assessment system of combined mammography and adjunctive ultrasound for breast cancer screening has been developed in Japan. The basic concept is based on a comprehensive assessment that includes a mammography assessment followed by an adjunctive assessment for ultrasound similar to the clinical setting. Currently, mammography alone is recommended for population-based breast cancer screening in Japan, but additional ultrasonography is extensively available for women, especially for women with dense breasts with shared decision-making for personalized breast cancer screening. The overall assessment system is recommended for use in Japan when breast cancer screening is conducted using both mammography and ultrasonography. In this article, we summarize the advantages of the overall assessment and the simultaneous mammography/ultrasound method, the basic approach used in Japan to assign the overall assessment category for breast cancer screening, and we outline the future directions of adjunctive screening ultrasound.

Keywords Breast cancer screening · Mammography · Ultrasound · Dense breast · Overall assessment

Introduction

Mammography is the only breast cancer screening method used that has provided evidence in support of reduced breast cancer mortality. Nevertheless, it has been associated with a poor accuracy in the cases of women with dense breast tissues. In Europe and the United States, the age-specific incidence of female breast cancer peaks at age 60 and above. However, in Japan, it peaks at ages 40–49. In addition,

similar to other countries, the proportion of women with dense breast tissues is high in the 40-year-old age group. Therefore, Japanese women with ages between 40 and 49 years are affected by the high-breast cancer incidence and the much denser breast tissue, thus resulting in lower mammography sensitivity. Thus, measures are needed for denser breast tissues. Nevertheless, it is a very tough challenge to conduct breast cancer screening in Japan.

Since 2007, the Japan Strategic Anti-cancer Randomized Trial (J-START), a randomized controlled trial that incorporated ultrasound in the screening mammography exam for women in the 40s, has been initiated in Japan as part of enforced measures to deal with women with dense breasts [1, 2]. Preliminary results from the J-START showed (a) that the sensitivity was significantly higher in the intervention group compared with the control group, and (b) that there was a significant reduction in interval cancers in the intervention group [3]. This explains why a breast cancer mortality reduction is expected, but this has not been proven yet. Conversely, the specificity was significantly lower in

✉ Koji Ohnuki
o-nuki@chuo-hp.jp

¹ Overall Assessment Committee of the Japan Association of Breast Cancer Screening, Division of Breast and Endocrine Surgery, Iwate Prefectural Central Hospital, 1-4-1 Ueda, Morioka, Iwate 020-0066, Japan

² Study Group for Breast Cancer Screening in Japan Association of Breast and Thyroid Sonology, Iwate Prefectural Central Hospital, 1-4-1 Ueda, Morioka, Iwate 020-0066, Japan

the intervention group because additional examinations are required in all positive cases classified in the J-START by either mammography or ultrasound. The assessment always results in low specificity when ultrasound is added to the screening mammography exam because the sensitivity and specificity in test performance always have trade-off relation for average-risk women. To address this issue, an overall assessment system of the combined mammography and adjunctive ultrasound for breast cancer screening was developed. In 2012, the Japan Association of Breast and Thyroid Sonology formulated the criteria for the overall assessment [4], and in 2015, the Japan Association of Breast Cancer Screening (JABCS) published the manual for the overall assessment [5]. The basic concept of the overall assessment is based on the conduct of a mammogram assessment first, followed by an adjunctive ultrasound assessment, and a comprehensive assessment based on both types of exams, similar to the clinical setting.

Currently, mammography alone is recommended for population-based breast cancer screening in Japan, but additional ultrasonography is extensively available for women, and especially in women with dense breasts, based on shared decision-making. Therefore, the overall assessment system is recommended by the JABCS when breast cancer screening is performed using both mammography and ultrasonography. The purpose of this study is to introduce Japan's assessment system of combined mammography and ultrasound for breast cancer screening to the rest of the world.

Two types for the overall assessment system of combined mammography and ultrasound for breast cancer screening: simultaneous mammography/ultrasound method and separate mammography/ultrasound method.

If a screening mammography shows findings that require an additional examination, the subsequent step would involve an ultrasound exam. However, in many cases, the ultrasound shows only typical benign lesions or no abnormal findings, and further examinations become unnecessary. For example, in the cases of focal density that require an additional examination following screening mammography, targeted ultrasound determined that 43–70% of the cases were normal or typically benign [6–8]. A system in which mammography and ultrasound are performed at the same time, and in cases in which additional examinations are performed if either the mammography or ultrasound findings are positive, does not reduce the number of false-positive cases attributed to mammography alone, even though the ultrasound findings are available at the same time. The main purpose of the overall assessment is to reduce the harm of screening by determining that further examination are not necessary at the screening setting. In the results of combined screening of mammography and ultrasound in Japan, the recall rates of the overall assessment were 16–53% lower than those of the independent assessment [9–12].

When ultrasound is incorporated in a comprehensive screening mammography exam, we have two methods to assign the overall assessment. One method involves the execution of separate mammography and ultrasound exams in which an ultrasound is performed without the knowledge of the findings and assessment of the corresponding mammography exam. The method is called as separate mammography/ultrasound method. Another method is the simultaneous mammography/ultrasound method in which an ultrasound is performed based on the findings and the assessment of the corresponding mammography exam. Hand-held ultrasound is dependent on the skills of the examiner. It is more accurate to perform an ultrasound exam following the corresponding mammogram and refer to the findings of these exams. This approach provides a very common indication for breast ultrasound in the clinical setting. It is clear that ultrasound characterization of mammographic abnormalities is included in the evaluation and management of breast disease. The method is called as simultaneous mammography/ultrasound method.

Basic concepts and typical cases of the overall assessment category for combined mammography and ultrasound for breast cancer screening.

Mammography and ultrasound are evaluated according to their respective Japanese guidelines [13–15], and then the final category is then decided using the criteria for the overall assessment of combined mammography and ultrasound for breast cancer screening (see Table 1). The categories are defined below.

1. Category 1: Negative. No additional examination required.
2. Category 2: Benign. No additional examination required.
3. Category 3: Low likelihood of malignancy. Need an additional imaging evaluation.
4. Category 4: Moderate likelihood of malignancy. Biopsy should be considered.
5. Category 5: Highly suggestive of malignancy. Appropriate action is required.

In 2019, the Japanese Breast Cancer Society defined the screening categories as (a) the screening mammography categories (SMCs) for mammography evaluations, (b) the screening ultrasound category (SUC) for ultrasonic evaluations, and (c) the screening category (SC) for final determination. Further examinations are necessary for SC 3 or higher, that has the same meaning as category 0 in ACR-BI-RADS.

Type A. If there is no malignant finding on mammography and there is a suspicious malignant finding on ultrasound.

Table 1 Summary of the criteria used for the overall assessment of combined mammography and ultrasound for breast cancer screening

Type	MG findings		The role of adjunctive US	Influence on screening accuracy
A	C1, C2	Fibroglandular Density Fatty density	Final category is decided by US US may not be necessary	Sensitivity ↑
B	Mass C3-5	Circumscribed margin (C3) Uncircumscribed margin (C4, 5)	Final category is decided by US Further examination is usually required	Specificity ↑
C	Asymmetries (C3–4)		Final category is decided by US	Specificity ↑
D	Calcifications (C3–5)		Further examination is usually required	
E	Architectural distortion (C4)		Further examination is usually required	

MG mammography, US ultrasound, C1 Category 1 (negative), C2 Category 2 (benign), C3 Category 3 (low likelihood of malignancy), C4 Category 4 (moderate likelihood of malignancy), C5 Category 5 (highly suggestive of malignancy) C3 or higher need further examination

- If the location has fibroglandular density on mammography, the final category is decided by the ultrasound findings.
- Mammography sensitivity is always high in fatty tissue, so if the lesion of concern on ultrasound is in the fatty area on the mammography, it is unlikely to be a lesion that requires further examination.

If mammography does not detect any malignancies (SMC1, 2), ultrasound is highly useful when the breast composition is heterogeneous or extremely dense. The ultrasound exam can detect occult cancers identified in mammography a priori, and can consequently increase sensitivity (Fig. 1). On the other hand, the fatty areas on the mammogram are not too much of a concern on ultrasound.

Lesions located in the periphery of the breast may not be projected on mammography. Even in the case in which breast composition is almost entirely fatty, or in cases with scattered areas of fibroglandular density, the classification of the final category is decided by the ultrasonic findings if the lesion detected by the ultrasound is considered to be present in the blind area of mammography.

Type B. If a mass of SMC 3 or higher is found on mammography.

- In the case of the circumscribed margin, the final category is decided by the ultrasonic findings.
- If the mass shows microlobulated, indistinct, or spiculated margins, the final category is decided by mammography.

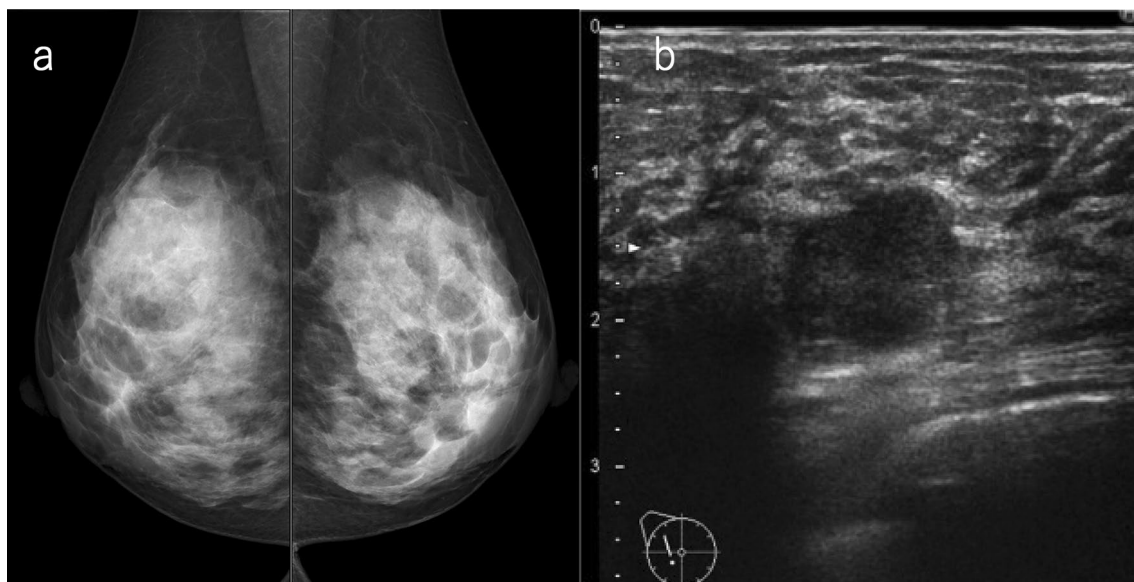


Fig. 1 A case with no malignant findings on mammography. **a** Mammography: the breast composition is extremely dense, SMC 1. **b** Ultrasound: irregular, not parallel, hypoechoic mass, SUC 4. The

overall assessment category: SC 4. Histopathology: invasive ductal carcinoma, grade 3 (SMC screening mammography category, SUC screening ultrasound category, SC screening category)

- If the lesion corresponding to the mammography findings cannot be identified by ultrasound, the final category is decided by mammography.

Examples of lesions that are visualized as circumscribed masses on mammography include cysts, fibroadenomas, intracystic tumors, and breast cancers with minor tendency to invade surrounding tissues (mucinous carcinoma, etc.). Ultrasound is useful for the evaluation of the internal structure or orientation of the mass, and if there are findings of simple cysts or typical fibroadenomas, ultrasound findings can be prioritized and classified as SC 2 (Fig. 2). Even when a benign tumor, such as a cyst or fibroadenoma, is hidden by superimposed or adjacent fibroglandular tissue, and appears to have obscured margins, it can be classified as category 2 by ultrasound.

When mammography shows that the margins of the mass are microlobulated, indistinct, or spiculated, it is considered to reflect the invasion of breast cancer into surrounding tissues. If these findings are observed, the overall assessment should be performed based on malignancy.

It should be noted that a mass in the deep or the peripheral part of the large breast may not be easily detected by ultrasound. Further, a small invasive tumor existing in adipose tissue may not be easily detected by ultrasound even if it can be confirmed by mammography, especially when performing ultrasound without the findings and assessment of the corresponding mammography (separate mammography/ultrasound combined method). If there is a possibility (as described above), the mammography findings should be

prioritized even if there are no abnormalities on ultrasound (Fig. 3). When ultrasound is performed based on the findings and assessment of the corresponding mammography (simultaneous mammography/ultrasound combined method), it is possible to perform targeted scanning on lesion candidates so that the ultrasound can be efficiently performed. In this sense, its reliability is enhanced.

Type C. If asymmetries are found on mammography.

- If asymmetries can be determined to be attributed to a normal mammary gland by ultrasound, this gland will be classified as SC 1.
- If the ultrasound can confirm a mass or non-mass abnormality, give priority to ultrasound. Attention should be paid to breast cancer with a predominant intraductal component and to non-mass abnormalities that appear as hypoechoic areas with indistinct margins.
- If the lesion corresponding to the mammography findings cannot be identified by ultrasound, the final category is decided by mammography.

If the focal or global densities are found on mammography, it is necessary to estimate the location from two-view mammography and pay particular attention to the location during ultrasonic scanning. If there are findings in one view only, a larger area should be carefully scanned. In general, asymmetric densities on mammography are not likely to correspond to true pathological lesions. If the ultrasound is performed with special attention to the location, and there is no obvious abnormality other than the normal mammary

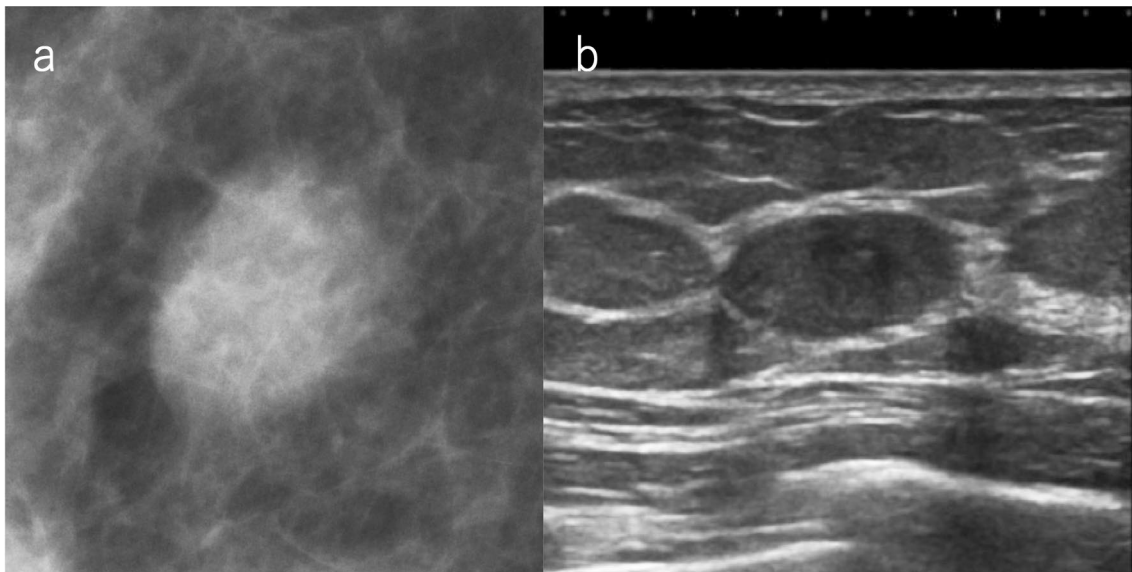
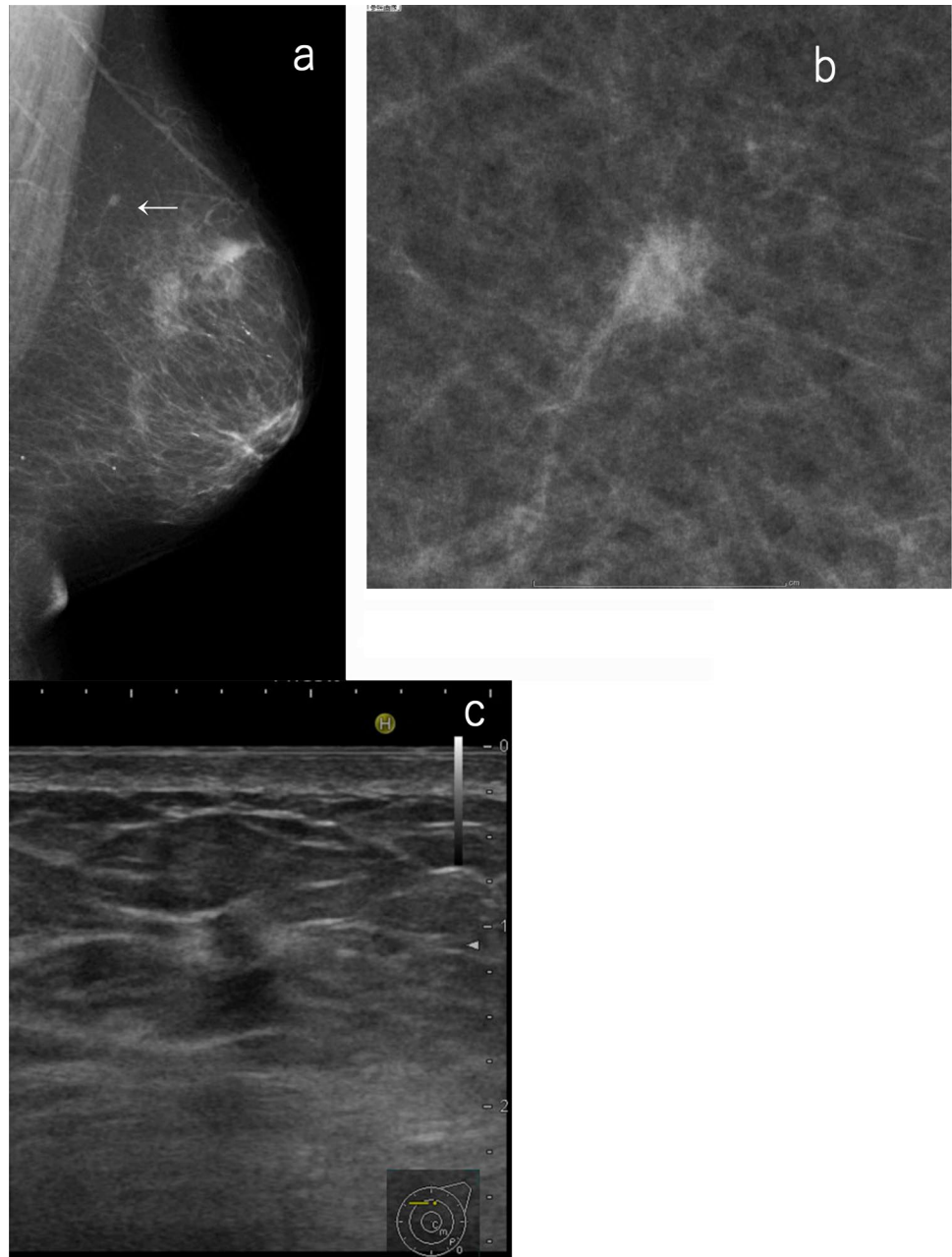


Fig. 2 A case of circumscribed mass on mammography. **a** Mammography: oval mass with margin mostly obscured but also circumscribed, SMC 3. **b** Ultrasound: oval, circumscribed, and parallel to

the skin; classically fibroadenoma, SUC 2. The overall assessment category: SC 2 (SMC screening mammography category, SUC screening ultrasound category, SC screening category)

Fig. 3 A case of a small, indistinct mass on mammography but no abnormal findings on ultrasound. **a, b** Mammography: small indistinct mass (arrow), SMC. Screening ultrasound: no abnormality, SUC 1. The overall assessment category: SC 4. **c** Targeted ultrasound: indistinct mass with interruption of the anterior border of the mammary gland and halo sign (4 mm), DUC4. Histopathology: invasive ductal carcinoma. This case is difficult to detect based on screening ultrasound, especially when performing ultrasound without reference to mammography findings (separate mammography/ultrasound method) (*SMC* screening mammography category, *SUC* screening ultrasound category, *SC* screening category, *DUC* diagnostic ultrasound category)



tissue, the overall assessment will be category 1. This assessment avoids a number of additional, unnecessary examinations (Fig. 4). If the mammographic density of a certain size is attributed to a true lesion, the lesion is usually detected by ultrasound. If the ultrasound cannot reveal any lesion corresponding to that type of mammographic density and yields just a normal gland, this will constitute firm evidence in justification of category 1 classification.

Conversely, if the ultrasound shows a mass or non-mass abnormality at the location of the mammographic findings, the final category is decided by ultrasound.

If the asymmetric density is small, and the internal echoes of the corresponding lesion are isoechoic to hyperechoic

with fat, or if the asymmetric density is located just below the nipple, or at the margin of the mammary gland, it may be difficult to detect it by screening ultrasound. Specifically, in the case of the separate mammography/ultrasound method, if the lesion detected by mammography is considered difficult to detect by ultrasound, the mammographic findings should be prioritized (Fig. 5).

Type D. If calcifications of category 3 or higher are found on mammography.

- In principle, priority is given to mammographic findings. However, it may be possible to determine lesions as benign that are apparent by ultrasound.

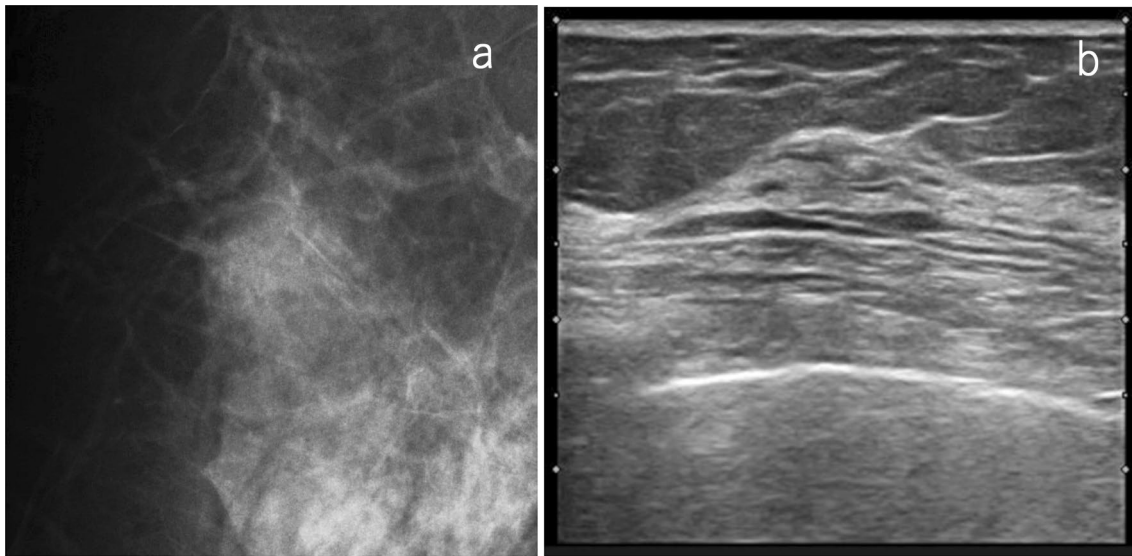


Fig. 4 A case of focal density on mammography. **a** Mammography: focal density, SMC 3. **b** Ultrasound: focally thickened normal mammary glands were detected as abnormal findings on MG, SUC 1. The

overall assessment category: SC 1 (*SMC* screening mammography category, *SUC* screening ultrasound category, *SC* screening category)

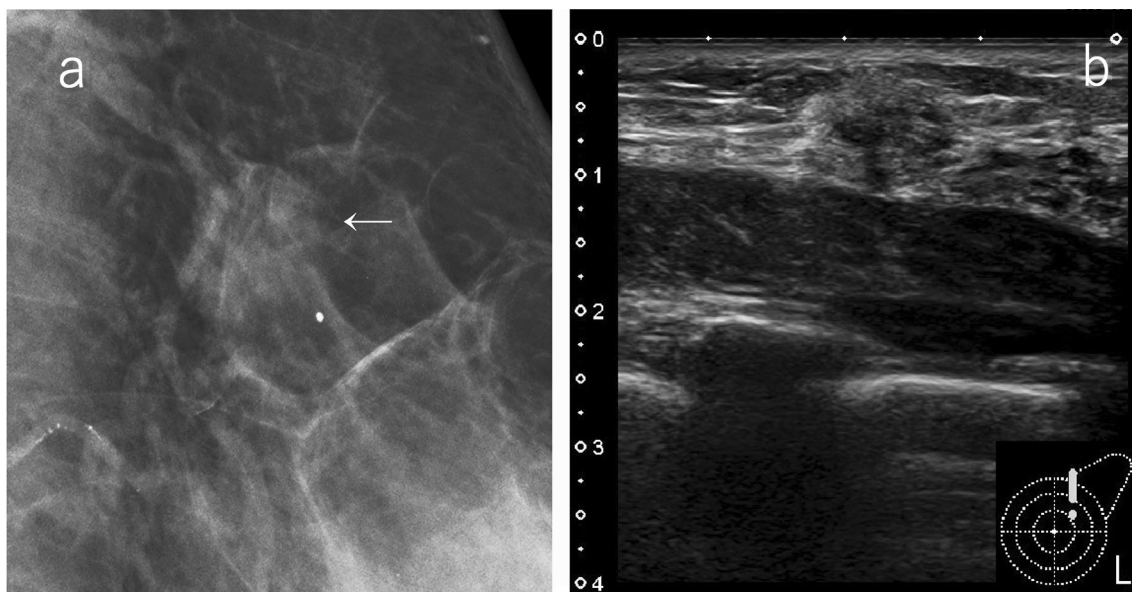


Fig. 5 A case of focal density on mammography. **a** Mammography: focal density (allow), SMC 3 (SMC4 if it is developing asymmetry). **b** Screening ultrasound: hyperchoic mass with indistinct margin, SUC 4. Overall assessment category: SC 4. Histopathology: invasive ductal carcinoma. This case may be difficult to detect with screening

ultrasound, especially when performing ultrasound without reference to mammography findings (separate mammography/ultrasound method) (*SMC* screening mammography category, *SUC* screening ultrasound category, *SC* screening category)

If mammography shows calcifications of category 3 or higher, the findings of mammography should be given priority in principle. Regardless of the ultrasonic findings, further examination will be required. Therefore, it is not necessary to evaluate the calcifications themselves in detail by screening ultrasound, but it is necessary to

carefully check the presence or absence of mass or non-mass lesion abnormalities in the area where calcifications are found in mammography. The final category may be more suspicious of malignancy than mammography if ultrasound detects a mass or non-mass lesion.

When the number of punctate calcifications is small and the density is low, the mammographic category is usually equal to two. However, when the background regions of calcifications have high densities, these calcifications may be the only findings that may indicate malignancy on mammography. Thus, it is more important to evaluate the presence or absence of mass or non-mass lesions at the corresponding site by ultrasound.

Conversely, even if there are category 3 calcifications in mammography, it may be possible to classify them as category 2 based on the overall assessment. For example, if mammography shows coarse heterogeneous calcifications but there is a tumor with a circumscribed margin, and the long axis of the lesion parallels the skin line at the site of calcification on ultrasound, the lesion is judged as a fibroadenoma and is classified as category 2.

Type E. If architectural distortion is found on mammography.

- In principle, the final category is decided by mammography.

If the mammography shows obvious architectural distortion and the person examined had no history of trauma or surgery, the finding is suspicious for malignancy. Given that it may be difficult to point out subtle architectural distortion during screening ultrasound, the mammography assessment should be prioritized even when there are no abnormal findings on ultrasound. If a mass with an echogenic halo is found on ultrasound at the site of the architectural distortion on mammography, the final category is classified as a category

5, even if the mammography classified it as a category 4 (Fig. 6).

Practice of the overall assessment of combined mammography and ultrasound in breast cancer screening

Because breast ultrasound is almost mostly performed by the hand-held method in Japan, the accuracy of the ultrasound screening depends considerably on the examiners. Quality control of ultrasound is very important and is performed according to the quality assurance guidelines established by J-START [16].

When conducting a combined screening of mammography and ultrasonography, the JABCS recommends conducting the mammography exam first followed by the ultrasonic exam executed in reference to the mammography findings (simultaneous mammography/ultrasound method). Although it is ideal to perform an ultrasound with reference to the qualified physician's interpretation, in most cases in Japan, sonographers perform the ultrasound while they read the mammography results themselves. Owing to these circumstances, the Japanese Central Organization on Quality Assurance of Breast Cancer Screening (JCOQABCS) regularly holds mammography interpretation sessions for sonographers. Therefore, in Japan, sonographers can receive training for mammography interpretation in addition to training for ultrasound [17, 18].

To perform more accurate evaluations, it is better to record the entire breast ultrasound image either by volume

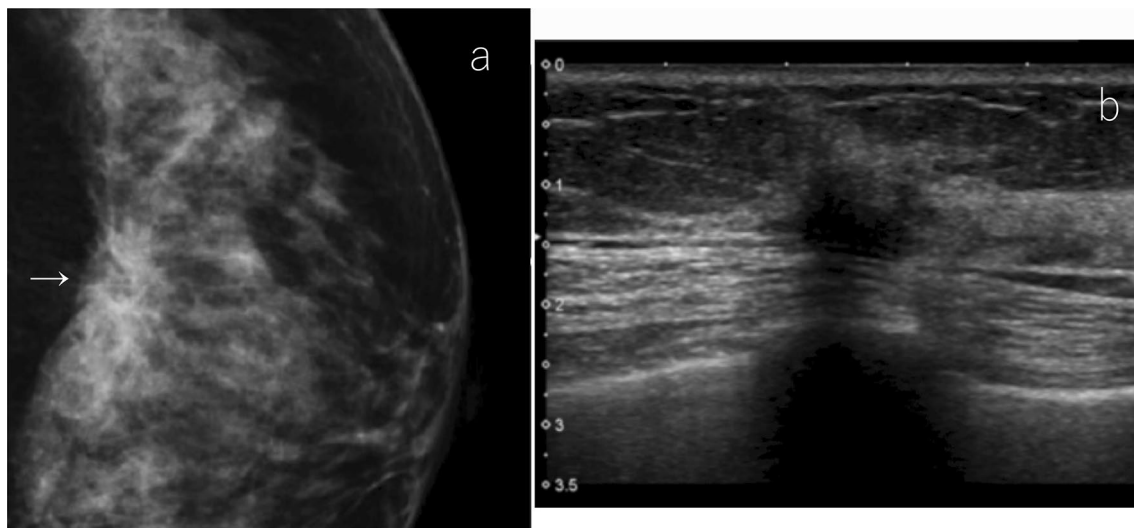


Fig. 6 A case of architectural distortion on mammography. **a** Mammography: architectural distortion, SMC 4. **b** Ultrasound: irregular, not circumscribed, and not parallel to the skin with interruption of the anterior border of the mammary gland and halo sign. Typical find-

ings of invasive cancer, SUC 5. The overall assessment category: SC 5. Histopathology: invasive ductal carcinoma (SMC screening mammography category, SUC screening ultrasound category, SC screening category)

data or video, blood flow, and/or elastography information of the detected lesion. These require time and cost. However, in ultrasound, as in mammography, unnecessary additional examination can be avoided by comparing the findings with previous images and movies. Communication between the sonographer and the physician is also important, and if there is a regular conference, the accuracy of the examination will increase.

The comprehensive evaluation is usually performed by one physician, in reference to the initial interpretation of the mammogram performed by another physician and the ultrasound records of the sonographer. The physician must have his/her qualifications certified by the JCOQABCS to conduct the overall assessment.

Future directions of adjunctive ultrasound screening in Japan

When considering additional modalities of mammography screening, it is important to evaluate the benefits and harms. One of the harms to consider is a false-positive result. For dense breasts, the additional ultrasound to mammography screening has been reported to increase the recall rate by 5.5–15.1% [19, 20]. In the first screening round of J-START in the 40 s age group, the recall rate in the intervention group was limited to a 3.8% increase compared to the control group [3]. The Japanese recall criteria for ultrasound breast cancer screening are designed to avoid high recall rates [14, 15]. With learning curves and comparison to prior images, it is expected that the recall rate of the second screening round will decrease from the first screening in J-START. The additional recall rate of organized mammography screening for breast cancer combined with ultrasound on women aged 40–69 years in Austria [21] was 1.31%. In population-based screening, the recall rate could be kept lower than the prevalent screening. The overall assessment can reduce false positives even more than mammography alone when ultrasound is added to a mammography screening [22]. According to the results from several facilities in Japan, the overall assessment showed that the breast cancer detection rate was higher in dense breasts, and the recall rate was lower in non-dense breasts compared with mammography alone (unpublished data).

In addition, overdiagnosis must be considered as one of the harms, but is difficult to assess overdiagnosis at this time [23]. Ultrasound does not delineate punctate or amorphous calcifications without any other abnormality that is detected by mammography alone. This means that it does not detect low-grade DCIS and breast ultrasound may be less harmful than mammography in terms of overdiagnosis. However, whether small invasive cancers detected by ultrasonography alone are overdiagnosed is a subject for future study.

In addition, overdiagnosis must be considered as a harm, but is difficult to assess overdiagnosis at this time [23]. Ultrasound does not delineate punctate or amorphous calcifications without any other abnormality that detected by mammography alone. This means that it does not detect low-grade DCIS and ultrasound has an advantage for overdiagnosis compared with mammography. However, whether small invasive cancers detected by ultrasonography alone are overdiagnosed is a subject for future study.

Hand-held ultrasound devices have many advantages, such as their compactness (small sizes) and low costs, lack of exam pain, lack of radiation exposure, and the fact that they do not use contrast agents. However, given that ultrasonic exams are examiner dependent, there is a possibility for a shortage of trained technologists if ultrasound is extensively implemented in screening. Although more than 3000 breast ultrasound technologists have been certified by the JCOQABCS, many of them are engaging in breast and abdominal ultrasound exams. Therefore, the number of breast ultrasound technologists is still in shortage for population-based breast cancer screenings in Japan. In addition, spread of automated whole breast ultrasound system may be need.

Adjunctive ultrasound may be more useful for breasts with less adipose tissue that is common in the Japanese population. In addition, in Japan, screening of bilateral breasts with ultrasound costs 3500 yen with insurance, and it is considered cost effective. With adequate quality control and complementary use with mammography in the overall assessment, adjunct ultrasound may be not only constitute an alternative to magnetic resonance imaging exams for women with a high risk of breast cancer, but could also serve as an appropriate screening modality for women with an average risk of breast cancer. To determine whether ultrasound should be added to population-based breast cancer screening, proof of mortality reduction from long-term follow-up in J-START and appropriate cost-effectiveness analysis must be performed. Although the mortality rate reduction is the most important parameter used to evaluate the efficacy of adjunctive ultrasound in breast cancer screening, preliminary results from the J-START are essential in providing personalized supplemental screening modality choices to women with dense breasts.

Acknowledgements We would like to thank the following members who developed the overall assessment system and Enago (www.enago.jp) for the English language review.

Author contributions The Overall Assessment Committee of the Japan Association of Breast Cancer Screening: Katsuhiko Teramoto, Kanako Ban, Koichi Hirokaga, Mikinao Oiwa, Yuko Okanami, Yumi Miyagi, Yuka Kujiraoka, Midori Noma, Junya Minohata, Satoko Abe, Naoto Kato, Sekine Ken, Mina Yamaguchi, Akiko Sato, Dai Kitagawa, Atsuko Kitahashi, Rika Yonekura, Hideaki Shirai, Takae Kajihara, Keiko Oyanagi, Yukio Mitsuzuka, and Hiroko Hurley. The Study

Group for Breast Cancer Screening in the Japan Association of Breast and Thyroid Sonology: Utako Iisato, Tokiko Endo, Mikinao Oiwa, Norikazu Obane, Setsuko Kaoku, Takae Kajiwara, Masahito Kato, Masaaki Kawai, Nobue Kawachi, Takeaki Kurita, Yukiji Kurushima, Akira Kuwashima, Shizuko Saito, Hiroshi Sakuma, Sakiko Suzuki, Mikako Tsunekawa, Kazutaka Nakashima, Shuichi Nakatani, Hideyuki Hashimoto, Sachiko Hayashi, Kanako Ban, Yasuhisa Fujimoto, Hiroshi Morikubo, Hidemitsu Yasuda, Yuzuru Yamada, Takanori Watanabe, Tomoko Watanabe, and Hiroshi Wada.

Compliance with ethical standards

Conflict of interest The authors declare that they have no conflict of interest.

Open Access This article is licensed under a Creative Commons Attribution 4.0 International License, which permits use, sharing, adaptation, distribution and reproduction in any medium or format, as long as you give appropriate credit to the original author(s) and the source, provide a link to the Creative Commons licence, and indicate if changes were made. The images or other third party material in this article are included in the article's Creative Commons licence, unless indicated otherwise in a credit line to the material. If material is not included in the article's Creative Commons licence and your intended use is not permitted by statutory regulation or exceeds the permitted use, you will need to obtain permission directly from the copyright holder. To view a copy of this licence, visit <http://creativecommons.org/licenses/by/4.0/>.

References

- Ohuchi N, Ishida T, Kawai M, Narikawa Y, Yamamoto S, Sobue T. Randomized controlled trial on effectiveness of ultrasonography screening for breast cancer in women aged 40–49 (J-START): research design. *Jpn J Clin Oncol*. 2011;41(2):275–7.
- Ishida T, Suzuki A, Kawai M, Narikawa Y, Saito H, Yamamoto S, et al. A randomized controlled trial to verify the efficacy of the use of ultrasonography in breast cancer screening aged 40–49 (J-START): 76 196 women registered. *Jpn J Clin Oncol*. 2014;44(2):134–40.
- Ohuchi N, Suzuki A, Sobue T, Kawai M, Yamamoto S, Zheng YF, et al. J-START investigator groups. Sensitivity and specificity of mammography and adjunctive ultrasonography to screen for breast cancer in the Japan Strategic Anti-cancer Randomized Trial (J-START): a randomised controlled trial. *Lancet* 2016;387(10016):341–8.
- Ohnuki K, Tsunoda H, Tohno E, Iisato U, Oiwa M, Obane N, et al. The Study Group for Breast Cancer Screening in Japan Association of Breast and Thyroid Sonology. The criteria for mammography screening combined with ultrasonography (Japanese). *J Jpn Assoc Breast Cancer Screen* 2012;21(3):273–9.
- The Combined Assessment Committee of the Japan Association of Breast Cancer Screening. The overall assessment manual for combined screening of mammography and ultrasound (Japanese). Tokyo: Shinoharashinsha; 2015.
- Hagiwara M, Kodama HOH, Sugawara T, Fujita E, Tokuda T, et al. Additional breast ultrasonography helps determine need for extra examination regarding focal asymmetric densities seen in mammographic screening (Japanese). *Ningen Dock*. 2015;30:15–21.
- Oiwa M, Endo T, Morita T, Suda N, Sato Y, Hayashi T, et al. How to deal with focal asymmetric densities on mammograph screening combined with ultrasonography in terms of increased specificity (Japanese). *Jpn AssocBreast Cancer Screen*. 2015;24(2):293–303.
- Uto C, Yoshimura R, Mori T, Fukami Y, Nagano Y, Taniyama E, et al. The usefulness of the combined criteria in the focal asymmetric density and masses observation (Japanese). *Ningen Dock*. 2016;31:445–52.
- Suzuki S, Tsunoda H, Kawakami M, Hasasegawa H, Yonetsu K, Oyama T, et al. Evaluation of the recall criteria for breast cancer screening combined with mammography and ultrasonography (Japanese). *Jpn AssocBreast Cancer Screen*. 2013;22(1):115–22.
- Souma A, Ohnuki K, Usami S, Miura Y, Sasaki K, Sekimura N, et al. Practice of overall assessment of breast cancer screening combined with mammography and ultrasonography (Japanese). *Jpn AssocBreast Cancer Screen*. 2016;25(2):160–2.
- Ito N, Yoshimura R, Mori T, Nagano Y, Kamei A, Sou E, et al. Study on breast density-focused breast cancer screening combining mammography and ultrasonography (Japanese). *Ningen Dock*. 2017;32:469–75.
- Usami S, Ohnuki K, Watanabe M, Umemura A, Takagi M, Asano S, et al. Current status and problems of simultaneous screening with mammography and ultrasound (Japanese). *Jpn AssocBreast Cancer Screen*. 2018;27(1):51–5.
- Ohnuki K. Mammographic screening for non-palpable breast cancer in Japan. *Breast Cancer*. 2005;12(4):258–66.
- Terminology and Diagnosis Criteria Committee Japan Society of Ultrasonics in Medicine. Recall criteria for ultrasound breast cancer screening. *J Med Ultrasonics* 2016;43:301–3.
- Ban K, Tsunoda H, Suzuki S, Takaki R, Sasaki K, Nakagawa M. Verification of recall criteria for masses detected on ultrasound breast cancer screening. *J Med Ultrasonics*. 2018;45(1):65–73.
- Uematsu T, Nakamura S, Ohuchi N. Do you know how to get the J-START quality assurance guideline? *Breast Cancer*. 2018;25(4):375–6.
- Tohno E, Sawai K, Shimamoto K, Ueno E, Endou T, Tsunoda-Shimizu H, et al. Establishment of seminars to improve the diagnostic accuracy and effectiveness of breast ultrasound. *J Med Ultrasonics*. 2006;33(4):239–44.
- Tohno E, Takahashi H, Tamada T, Fujimoto Y, Yasuda H, Ohuchi N. Educational program and testing using images for the standardization of breast cancer screening by ultrasonography. *Breast Cancer*. 2012;19(2):138–46.
- Berg WA, Zhang Z, Lehrer D, Jong RA, Pisano ED, Barr RG, et al. Detection of breast cancer with addition of annual screening ultrasound or a single screening MRI to mammography in women with elevated breast cancer risk. *JAMA*. 2012;307(13):1394–404.
- Corsetti V, Houssami N, Ghirardi M, Ferrari A, Speziani M, Bellarosa S, et al. Evidence of the effect of adjunct ultrasound screening in women with mammography-negative dense breasts: interval breast cancers at 1 year follow-up. *Eur J Cancer*. 2011;47(7):1021–6.
- Geiger-Gritsch S, Daniaux M, Buchberger W, Knapp R, Oberaigner W. Performance of 4 years of population-based mammography screening for breast cancer combined with ultrasound in Tyrol/Austria. *Wien Klin Wochenschr*. 2018;130(3–4):92–9.
- Tohno E, Umemoto T, Sasaki K, Morishima I, Ueno E. Effect of adding screening ultrasonography to screening mammography on patient recall and cancer detection rates: a retrospective study in Japan. *Eur J Radiol*. 2013;82(8):1227–30.
- Molleran VM. Will supplemental screening ultrasound increase breast cancer overdiagnosis? *Acad Radiol*. 2015;22(8):967–72.

Publisher's Note Springer Nature remains neutral with regard to jurisdictional claims in published maps and institutional affiliations.