

CORRECTION

## Correction to: Causal effects of synthetic chemicals on mitochondrial deficits and diabetes pandemic

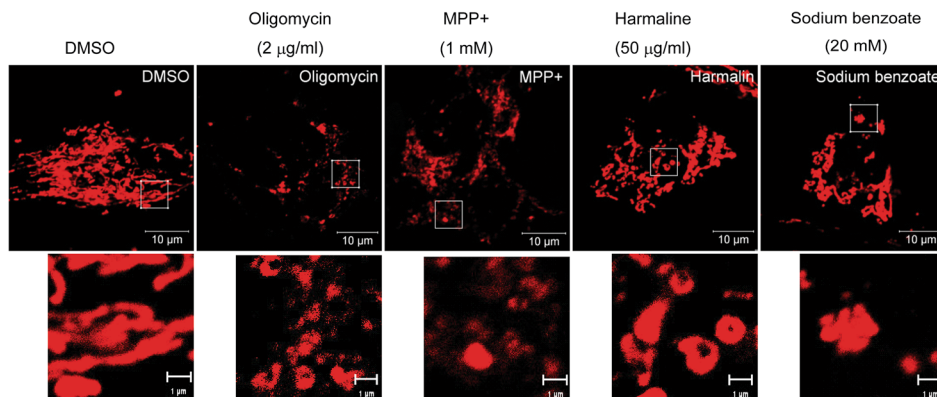
Wook-Ha Park<sup>1,2</sup> · Young-Chul Kang<sup>1,2</sup> · Ying Piao<sup>1,2</sup> · Daniel Hyungseok Pak<sup>1,2,3</sup> · Youngmi Kim Pak<sup>1,2</sup>

Published online: 29 August 2018  
© The Pharmaceutical Society of Korea 2018

**Correction to:** Arch. Pharm. Res. (2013) 36:178–188  
<https://doi.org/10.1007/s12272-013-0022-9>

should be corrected to 1.0 mM instead of 0.5 mM. The corrected Fig. 4 should be:

We regret that there is an error in the labeling of Fig. 4 of the published original article. The concentration of MPP<sup>+</sup>



**Fig. 4** Fixed confocal images of DsRed2-labeled mitochondria treated with various chemicals. All images are representations of SK-Hep1 cells transfected with DsRed2-mito vectors. Each image represents the effects of harmaline and sodium benzoate on mitochondrial morphology and dynamics. MPP<sup>+</sup> and oligomycin are positive controls, whereas DMSO is the negative control. *Inset* represents magnification of the boxed area. *Scale bars* are indicated on the images

The original article can be found online at <https://doi.org/10.1007/s12272-013-0022-9>.

✉ Youngmi Kim Pak  
ykpak@khu.ac.kr

<sup>1</sup> Department of Physiology, College of Medicine, Kyung Hee University, Seoul 130-701, Korea

<sup>2</sup> Department of Neuroscience, College of Medicine, Kyung Hee University, Seoul 130-701, Korea

<sup>3</sup> Department of Bioengineering, University of Illinois at Urbana-Champaign, Urbana, IL 61801, USA