



Deletion of the Creatine Transporter (*Slc6a8*) in Dopaminergic Neurons Leads to Hyperactivity in Mice

Zuhair I. Abdulla^{1,3} · Bahar Pahlevani¹ · Kerstin H. Lundgren² · Jordan L. Pennington¹ · Kenea C. Udobi^{1,3} · Kim B. Seroogy^{2,3} · Matthew R. Skelton^{1,3}

Received: 30 July 2019 / Accepted: 30 August 2019 / Published online: 13 September 2019
© Springer Science+Business Media, LLC, part of Springer Nature 2019

Abstract

The lack of cerebral creatine (Cr) causes intellectual disability and epilepsy. In addition, a significant portion of individuals with Cr transporter (CrT) deficiency (CTD), the leading cause of cerebral Cr deficiency syndromes (CCDS), are diagnosed with attention-deficit hyperactivity disorder. While the neurological effects of CTD are clear, the mechanisms that underlie these deficits are unknown. Part of this is due to the heterogenous nature of the brain and the unique metabolic demands of specific neuronal systems. Of particular interest related to Cr physiology are dopaminergic neurons, as many CCDS patients have ADHD and Cr has been implicated in dopamine-associated neurodegenerative disorders, such as Parkinson's and Huntington's diseases. The purpose of this study was to examine the effect of a loss of the *Slc6a8* (CrT) gene in dopamine transporter (*Slc6a3*; DAT) expressing cells on locomotor activity and motor function as the mice age. Floxed *Slc6a8* (*Slc6a8^{fllox}*) mice were mated to DAT^{IRESc^{cre}} expressing mice to generate DAT-specific *Slc6a8* knockouts (dCrT^{-y}). Locomotor activity, spontaneous activity, and performance in the challenging beam test were evaluated monthly in dCrT^{-y} and control (*Slc6a8^{fllox}*) mice from 3 to 12 months of age. dCrT^{-y} mice were hyperactive compared with controls throughout testing. In addition, dCrT^{-y} mice showed increased rearing and hindlimb steps in the spontaneous activity test. Latency to cross the narrow bridge was increased in dCrT^{-y} mice while foot slips were unchanged. Taken together, these data suggest that the lack of Cr in dopaminergic neurons causes hyperactivity while sparing motor function.

Keywords Creatine · Creatine transporter · DAT-Cre · Hyperactivity · Motor function

Introduction

Creatine (Cr) is a nitrogenous acid involved in energy homeostasis. Through a Cr kinase (CK)-mediated process, Cr is phosphorylated at sites of energy production and diffuses through the cytosol, creating phospho-Cr (PCr) pools (Wallimann et al. 2011, Lowe et al. 2013). At sites of ATP consumption, CK transfers the phosphate from PCr to ADP (Wyss and Kaddurah-Daouk 2000). The Cr/PCr shuttle is a

spatial and temporal ATP buffer, preventing transient changes in ATP:ADP or ATP:AMP ratios from increasing mitochondrial production (Wallimann et al. 2011). Reflecting the importance of Cr in energetically demanding tissue, the highest Cr concentrations are seen in the brain, heart, and muscle. In addition, Cr has antioxidant, neuroprotective, and mitochondria-protective capabilities (Wyss and Kaddurah-Daouk 2000). The significance of brain Cr is highlighted by the hallmark phenotype of intellectual disability and aphasia in cerebral Cr deficiency syndromes (CCDS) (Cecil et al. 2001, deGrauw et al. 2002, van de Kamp et al. 2013). Cr transporter (CrT; SLC6A8) deficiency (CTD) is the most prevalent type of CCDS and is thought to be responsible for ~2% of all X-linked intellectual disability (Rosenberg et al. 2004; Newmeyer et al. 2005). While intellectual disability is the most striking feature of CTD, the incidence of motoric impairments is high among CTD patients (van de Kamp et al. 2013; van de Kamp et al. 2014). To date, it is unclear how the loss of Cr leads to cognitive deficits. One of the primary challenges in elucidating the mechanisms of Cr-mediated deficits is that the

✉ Matthew R. Skelton
Matthew.skelton@cchmc.org

¹ Department of Pediatrics, University of Cincinnati College of Medicine and Division of Neurology, Cincinnati Children's Research Foundation, Cincinnati, OH, USA

² Department of Neurology, College of Medicine, University of Cincinnati, Cincinnati, OH, USA

³ Neuroscience Graduate Program, University of Cincinnati, Cincinnati, OH, USA

importance of Cr in specific neurotransmitter systems is unknown. This limits the ability to focus on a distinct cellular process that might be exclusive to one neuronal cell type and could be overlooked by global evaluation of the brain.

Dopamine (DA) is the primary neurotransmitter involved in voluntary motor function (Beninger 1983). Many movement disorders, e.g., Parkinson's and Huntington's disease, are caused by disruptions in dopaminergic function. Drugs that increase DA release, such as amphetamine and cocaine, cause hyperactivity (Roberts et al. 1975; Faraone 2018; Runegaard et al. 2018). Conversely, drugs that deplete DA result in hypoactivity and motor deficits (Koob et al. 1978; Beninger 1983). Additionally, DA neurons are especially sensitive to mitochondrial deficits. 6-hydroxydopamine (6-OHDA) (Gomez-Lazaro et al. 2008), rotenone (Xiong et al. 2012), and 1-methyl-4-phenyl-1,2,3,6-tetrahydropyridine (MPTP) (Przedborski et al. 2004) are mitochondrial toxicants that degenerate DA neurons and cause motor dysfunction. As such, they are regularly used to model Parkinson's disease (Sakai and Gash 1994; Matthews et al. 1999; Przedborski et al. 2004; Tirmenstein et al. 2005; Hosamani and Ramesh 2010; Glajch et al. 2012; Xiong et al. 2012). Importantly, Cr supplementation prevents or attenuates MPTP- (Matthews et al. 1999; Klivenyi et al. 2004), 6-OHDA- (Cunha et al. 2013; Cunha et al. 2014), and rotenone-induced toxicity (Hosamani and Ramesh 2010) suggesting that Cr could be an important mediator of mitochondrial-induced motor impairments.

To better understand the role of brain Cr, we developed transgenic mice with exons 2–4 of the murine *Slc6a8* (*Crt*) gene flanked by loxP sites (*Slc6a8^{fllox}*; Skelton et al. 2011). The *Slc6a8* gene is responsible for the transport of Cr into cells (Wyss and Kaddurah-Daouk 2000). Ubiquitous knockout (*Slc6a8^{-/-}*) mice generated from this line have reduced cerebral Cr, lower body weight, show significant learning and memory deficits (Skelton et al. 2011, Hautman et al. 2014, Ullio-Gamboa 2019, Udobi et al. 2019), and importantly, have increased striatal DA concentrations (Skelton et al. 2011; Abdulla et al. 2019). Additionally, *Slc6a8^{-/-}* mice have reduced swim speed compared with control (*Slc6a8^{+/-}*) mice (Skelton et al. 2011), indicative of the potential presence of motor impairments. Interestingly, *Slc6a8^{-/-}* mice were hypoactive during the first 5 min of a 1 h open field test; however, female *Slc6a8[±]* (Hautman et al. 2014) and male brain-specific *Slc6a8* knockout mice (Udobi et al. 2018) were hyperactive for the whole hour. This would suggest that Cr plays a role in exploratory behavior or activity levels. In order to isolate *Slc6a8*'s influence on the dopaminergic system, and to reduce potential confounds created by the size differences in ubiquitous knockout mice, we created a DA-specific *Slc6a8* knockout mouse (*dCr^{-/-}*). The purpose of this study was to determine the effect of a DA-specific *Slc6a8* knockout on locomotor activity and motor performance during adulthood.

Experimental Procedures

Subjects

Slc6a3^{tm1.1(cre)Bkmm/J} (*DAT^{IRESc^{re}+}*) mice were obtained from Jackson Labs (Bar Harbor, ME) (Backman et al. 2006). *DAT^{IRESc^{re}+}* mice were bred to wild-type mice from the same background strain (C57Bl/6J) for at least one generation to establish an in-house colony. In-house generated female *Slc6a8^{fl/fl}* mice (Skelton et al. 2011) were mated with the in-house generated male *DAT^{IRESc^{re}+}* mice. The resulting offspring were used as subjects for these studies with no more than 1 mouse/genotype/litter represented. Male *Slc6a8^{fl/y}:: DAT^{IRESc^{re}+}* (*dCr^{-/-}*) and *Slc6a8^{fl/y}:: DAT^{IRESc^{re}-}* (*Slc6a8^{fl/y}*) were tested every 30 days beginning at postnatal day (P) 90 and ending on P360. Hyperactivity has not been observed in either the *Slc6a8^{fl/y}* (Udobi et al. 2018; Udobi et al. 2019) or the heterozygous *DAT^{IRESc^{re}+}* mice (Birgner et al. 2010) when compared with wild-type mice, so we selected the *Slc6a8^{fl/y}* littermates as controls. Mice were weighed monthly prior to running behavioral assessments. Thirteen *Slc6a8^{fl/y}* and 11 *dCr^{-/-}* mice were enrolled at the beginning of the study and the study concluded with 8 *Slc6a8^{fl/y}* and 7 *dCr^{-/-}* mice. There was no clear cause of death for the mice that were lost during testing and none of the deaths were related to testing. A separate group of 3 *dCr^{-/-}*, 3 *Slc6a8^{+/-}*, and 3 *Slc6a8^{-/-}* mice were used for in situ hybridization. All procedures were performed in the Cincinnati Children's Research Foundation vivarium which is fully accredited by AAALAC International and protocols were approved by the Institutional Animal Use and Care Committee (protocol no. 2017-0019). Mice (2–4/cage) were housed in microisolators equipped with an automatic watering system. Lights were on a 14:10 light:dark cycle, room temperature was maintained at 19 ± 1 °C. Sterilized food and water were available ad libitum. All institutional and national guidelines for the care and use of laboratory animals were followed.

Behavior

Challenging Beam Task The protocol was adapted from Fleming (2004) with minor changes. A 1 m beam was divided into four 25 cm segments: the first was 3.5-cm wide and the width of each subsequent segment was reduced in 1 cm increments to a final width of 0.5 cm. A wire mesh grid (0.5 cm × 0.5 cm) was placed atop the beam. The bridge was elevated 13 cm from the tabletop using standard barrier mouse cages. Mice were trained for 2 days prior to testing. On day one, mice were assisted as they traversed the 1 m beam to the home-cage goal for two trials. Day one concluded when mice were able to complete 5 unassisted bridge traversals. On the second day of training, mice were required to complete 5 unassisted bridge traversals. For testing, mice were assessed over three, 2 min trials. Trials were recorded and scored by a trained observer

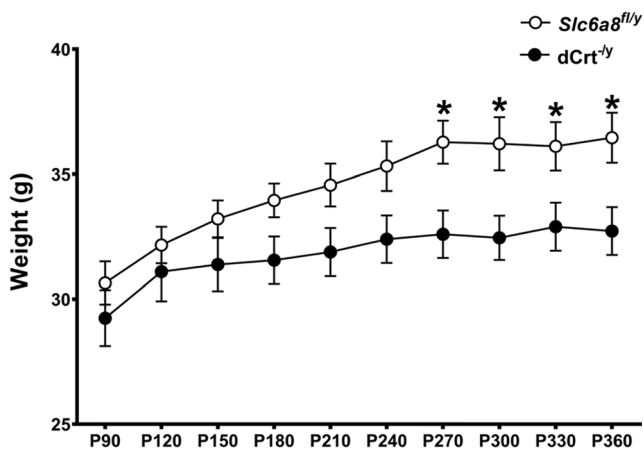


Fig. 1 *Weight*. An age \times gene interaction revealed that *dCrt^{-/-y}* mice weighed less than *Slc6a8^{fl/y}* mice from P270 to P330. All animals gained weight as they aged. (* $p < 0.05$)

blinded to genotype. The variables measured were latency to cross (2 min maximum), errors—defined as a foot-slip during forward progress—committed per steps taken, and total number of steps (Fleming 2004).

Spontaneous Activity A transparent glass cylinder (15.5 cm [h] \times 12.7 cm [dia]) was placed on a plexiglass platform with a camera below to record activity. Mice were placed in the cylinder for 3 min. Trials were recorded and scored offline by a trained observer blinded to genotype. The dependent measures were steps per limb (front and hind limb), rears, and total time grooming.

Overnight Locomotor Activity Locomotor activity was assessed in automated activity monitoring chambers (40 cm [w] \times 40 cm [d] \times 38 cm [h]) with 16 LED-photodetector beams in the X and Y planes (Photobeam Activity System, Open Field, San Diego Instruments, San Diego, CA). Photocells were spaced 2.5 cm apart. Mice were tested for 14 h, consisting of the last 2 h of the light phase, the 10 h dark phase, and 2 h of the following light phase.

In situ Hybridization

Mice were anesthetized with isoflurane, rapidly decapitated, and the brains dissected. Fresh-frozen sections through the ventral midbrain were cut on a cryostat (at 10 μ m thickness) and slide-mounted onto Superfrost plus microslides (VWR, Batavia, IL). Semi-adjacent sections were processed for the in situ hybridization localization of *Slc6a8* and tyrosine hydroxylase (TH) mRNAs using ³⁵S-labeled riboprobes, as described in detail previously (Seroogy and Herman 1997; Numan et al. 2005; Hemmerle et al. 2012). Briefly, for pre-treatment, the sections were placed in 4% paraformaldehyde (10 min), rinsed in 0.1 M phosphate-buffered saline (PBS) (5 min; twice) and 0.1 M PBS/0.2% glycine (5 min; twice),

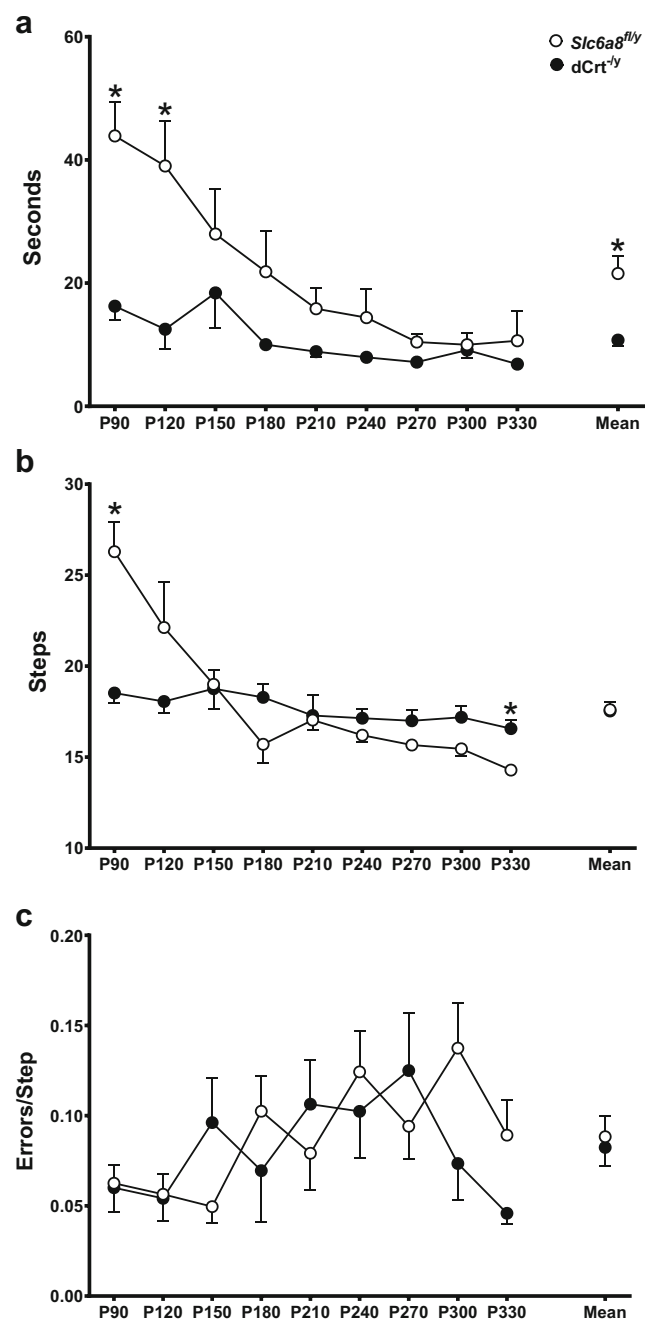


Fig. 2 *dCrt^{-/-y}* mice have decreased beam crossing latencies. **a** *dCrt^{-/-y}* mice traversed the beam faster than *Slc6a8^{fl/y}* animals and the latency to cross decreased as mice aged. **b** An age \times gene interaction was reported for number of steps required to cross the beam, with *dCrt^{-/-y}* mice requiring less steps on P90 and more steps on P330. **c** Groups did not differ on number of errors committed

acetylated in triethanolamine (pH 8.0) containing 0.25% acetic anhydride (10 min), dehydrated in a series of ethanol washes, delipidated in chloroform, and air-dried. Sections were hybridized overnight in a humidified chamber at 60 $^{\circ}$ C in hybridization solution with the ³⁵S-labeled probe at a concentration of 3×10^5 cpm/50 μ l. The composition of the hybridization cocktail for each probe was as follows: 50%

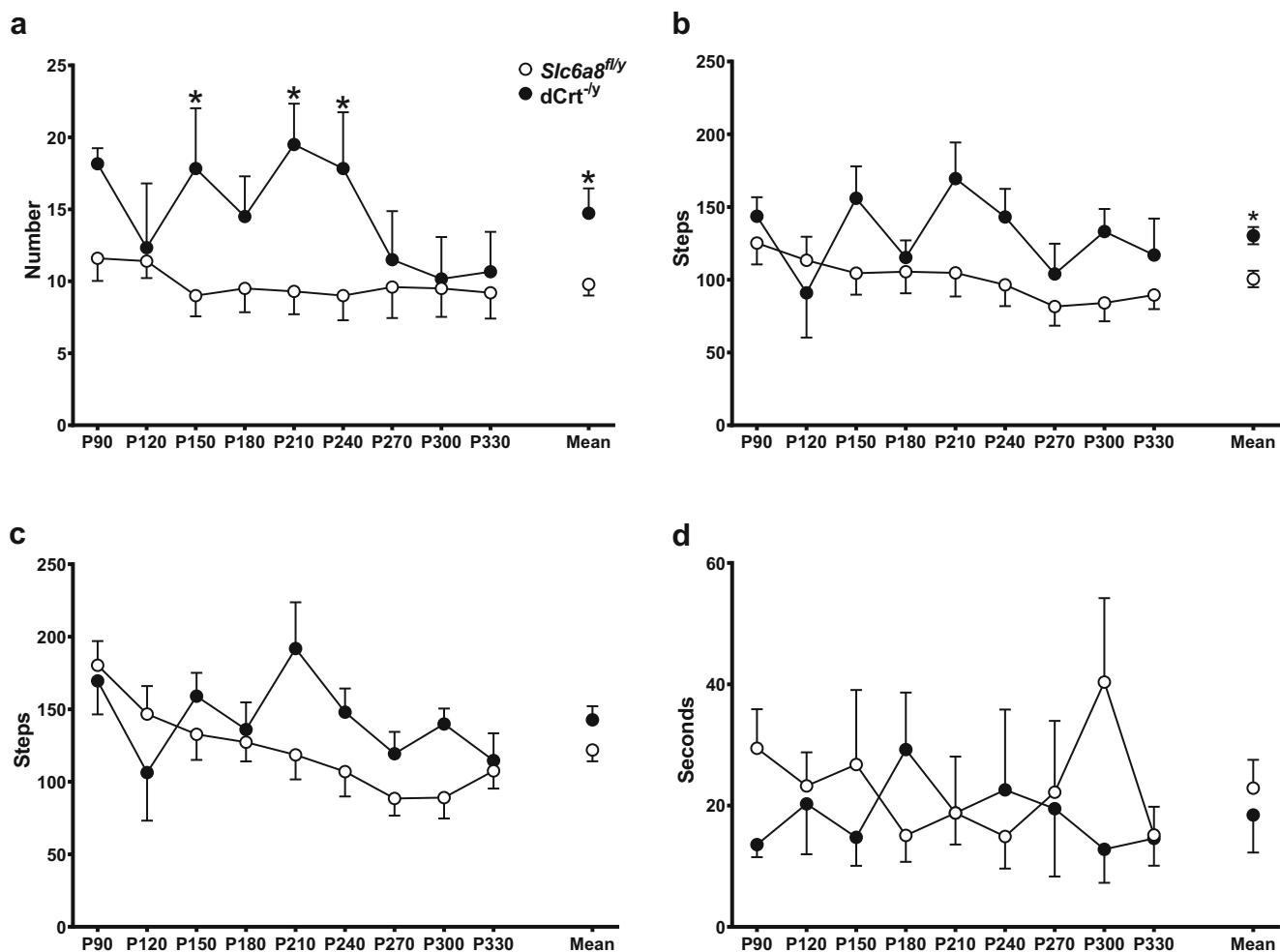


Fig. 3 *dCrt^{-/-}* mice have increased spontaneous activity. **a** *dCrt^{-/-}* mice reared more and **b** took more hindlimb steps than *Slc6a8^{fl/y}* mice, but recorded similar activity on **c** and forelimb steps **d** and grooming duration

deionized formamide, 10% dextran sulfate, 20 mM Tris-HCl, 10 mM EDTA, 40 mM dithiothreitol, 1X Denhardt's, 335 mM NaCl, 0.3 mg/ml denatured salmon sperm DNA, 0.15 mg/ml tRNA, DEPC H₂O, and the appropriate ³⁵S-labeled cRNA probe. The TH cDNA plasmid (kindly provided by J. Herman, University of Cincinnati) was contained in a pCR-TOPO vector and consisted of 366 bp. The templates for the 515 bp *Slc6a8* sense and antisense probes were generated by PCR amplification of exons 2–4 of murine *Slc6a8* mRNA. Total RNA was extracted from the hippocampus of a C57BL/6J mouse using Trizol (Invitrogen, Carlsbad, CA) and a cDNA library was generated using iScript Reverse Transcription Supermix (Bio-Rad, Hercules, CA). For the antisense probe, a T3 promoter was added to the 5' prime end of the reverse primer (5' AATTAACCCTCACTAAAGGTGTGTTCCCTTATTCCCTA 3', T3 sequence underlined) and the sense probe was generated by adding the T7 promoter to the 5' end of the forward primer (5' TAATACGACTCACTATAGGGCTTTCCTGTTGACTTGACC 3'; T7 sequence underlined). Probes were generated by in vitro transcription and labeled by incorporation of ³⁵S-ATP. Following

hybridization, coverslips were removed and the sections were taken through a series of post-hybridization washes in decreasing concentrations of standard sodium citrate, treated with ribonuclease A, rinsed again, and air-dried. The sections were then exposed to BioMax MR film (Kodak, Rochester, NY) for 2 days (TH cRNA) or 14 days (Crt cRNA) for generation of film autoradiograms. The films were developed with Kodak GBX developer and fixer (Kodak). Images were scanned at 3200 dpi from the film autoradiograms using Epson Scan software (Epson America, Inc., Long Beach, CA).

Statistics

Repeated-measures two-way ANOVAs (age × genotype) were used for all analyses in this study. Significant interactions were evaluated using post hoc analysis with the two-stage step up procedure of Benjamini, Krieger, and Yekutieli (Benjamini et al. 2006). Significance was set at *p* < 0.05 for all tests. Data were analyzed and graphs were generated using GraphPad Prism version 8.2.0 for Windows (GraphPad Software, La Jolla, CA).

Results

Weight While there were no weight differences between groups when the mice were younger, $dCrt^{-/y}$ mice did show a weight reduction from P270 to P330 compared with $Slc6a8^{fl/y}$ mice (age \times gene interaction: $F(9,153) = 1.95$, $p < 0.05$; Fig. 1). All mice gained weight as they aged ($F(9,153) = 18.92$, $p < 0.0001$).

Challenging Beam $dCrt^{-/y}$ mice traversed the beam faster than $Slc6a8^{fl/y}$ mice and the latency to cross decreased as mice aged (main effect of gene: $F(1,152) = 19.98$, $p < 0.0001$); main effect of age: $F(8,152) = 5.03$, $p < 0.001$; Fig. 2a). On P90, $dCrt^{-/y}$ mice took fewer steps to cross the beam than $Slc6a8^{fl/y}$ mice but took more steps on P330 (age \times gene interaction: $F(9,116) = 5.77$, $p < 0.001$; Fig. 2b). For number of errors committed, there were no differences between groups (Fig. 2c).

Spontaneous Activity $dCrt^{-/y}$ mice reared more (main effect of gene: $F(1,14) = 8.899$, $p < 0.01$; Fig. 3a) and had more hindlimb steps (main effect of gene: $F(1,14) = 11.8$, $p < 0.01$; Fig. 3b) than $Slc6a8^{fl/y}$ mice. Regardless of genotype, mice had fewer forelimb steps as they aged (main effect of age: $F(8,112) = 3.465$, $p < 0.05$; Fig. 3c). No differences were found for grooming duration (Fig. 3d).

Overnight Locomotor Activity $dCrt^{-/y}$ mice were hyperactive compared with $Slc6a8^{fl/y}$ mice at all ages except P120, P150, and P330 (main effect of gene: $F(1,16) = 21.09$, $p < 0.001$; main effect of age: $F(9,144) = 3.89$, $p < 0.001$; age \times gene interaction: $F(9,144) = 3.88$, $p < 0.001$; Fig. 4a, Fig. 5). Hyperactivity was present during both the light phase (main effect of gene: $F(1,16) = 35.51$, $p < 0.0001$; main effect of age: $F(9,144) = 5.05$, $p < 0.0001$; age \times gene interaction: $F(9,144) = 4.78$, $p < 0.0001$; Figs. 4b and 5) and the dark phase (main effect of gene: $F(1,16) = 15.42$, $p < 0.01$; main effect of age: $F(9,144) = 2.56$, $p < 0.01$; age \times gene interaction: $F(9,144) = 3.49$, $p < 0.001$; Fig. 4c and 5) for all ages except P120, P150, and P330.

In situ Hybridization Widespread expression of $Slc6a8$ mRNA was observed in brain sections of $Slc6a8^{+/y}$ and $dCrt^{-/y}$ mice, but, as expected, expression was not present in $Slc6a8^{-/y}$ mouse brains (Fig. 6a–c). Representative autoradiograms from the $dCrt^{-/y}$ mice demonstrated that $Slc6a8$ cRNA hybridization was absent specifically in the region of the ventral midbrain corresponding to ventral midbrain dopaminergic nuclei, as determined by processing semi-adjacent sections for TH mRNA localization (Fig. 6d–f). No labeling was present using the sense $Slc6a8$ riboprobe (Fig. 6g–i). These results provide strong evidence that the knockout of $Slc6a8$ mRNA was

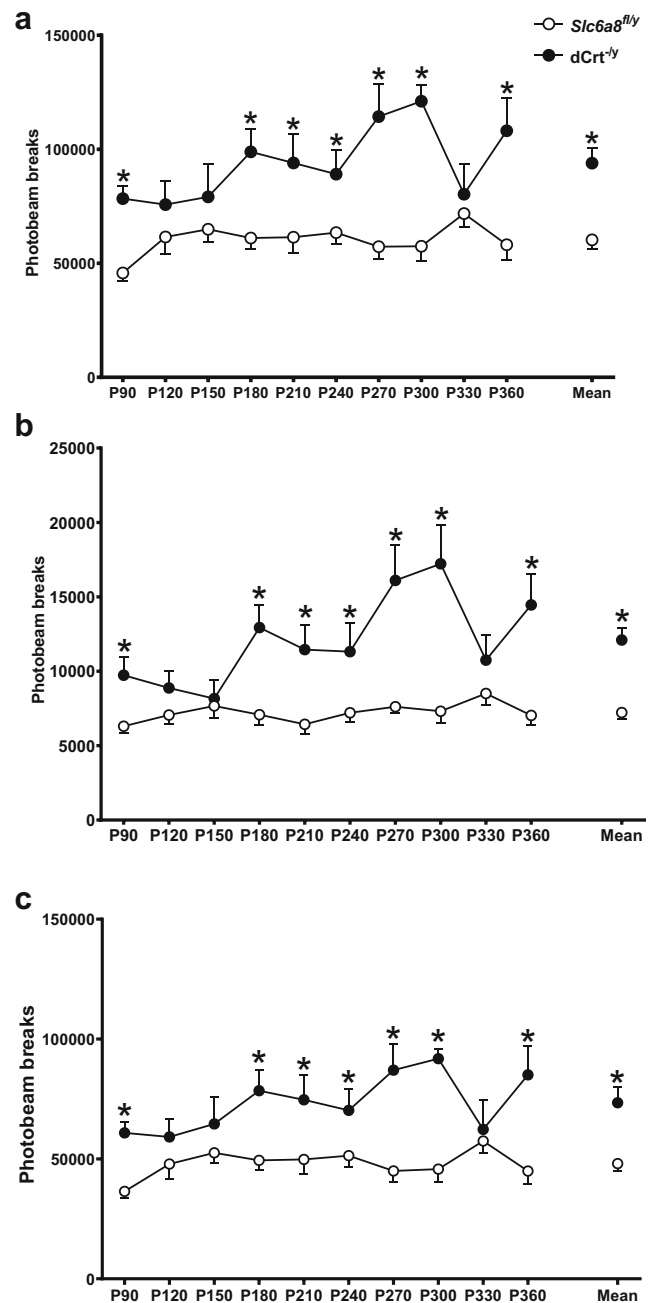
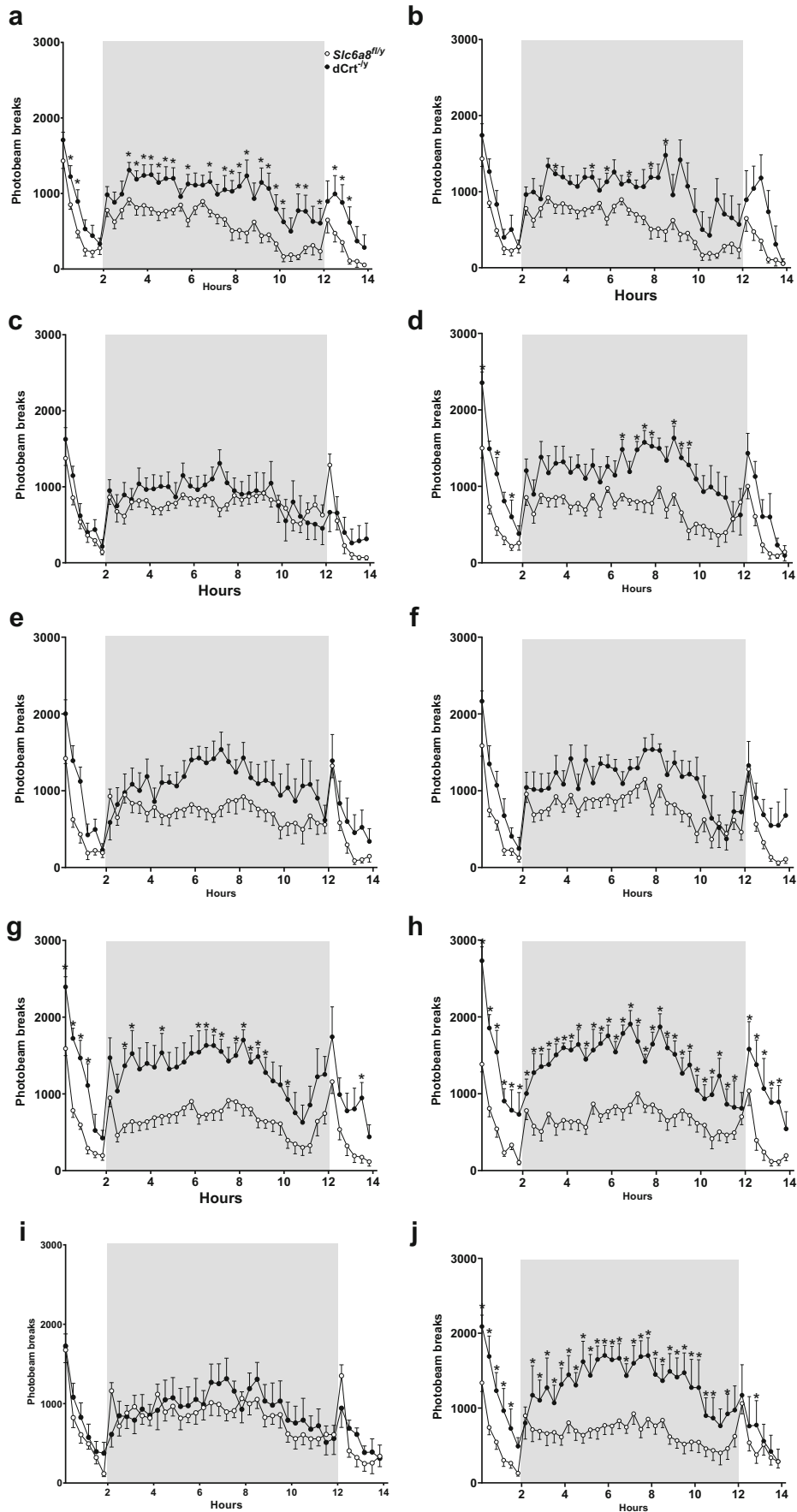


Fig. 4 Persistent hyperactivity in $dCrt^{-/y}$ mice. **a** $dCrt^{-/y}$ mice had increased activity compared with $Slc6a8^{fl/y}$ mice at all ages except P120, P150, and P330. During both the **b** light and **c** dark phases of the experiment, $dCrt^{-/y}$ mice were more active than $Slc6a8^{fl/y}$ controls on all testing periods except P120, P150, and P330

restricted to DAT-containing midbrain dopaminergic neurons in the $dCrt^{-/y}$ mice.

Discussion

$dCrt^{-/y}$ mice traversed the challenging beam faster than controls, exhibited more stepping activity in spontaneous activity,



◀ **Fig. 5** *Overnight locomotor activity.* dCrt^{-/-} mice are hyperactive compared to *Slc6a8*^{fl/y} mice throughout testing. 14-h locomotor assessments from **a** P90, **b** P120, **c** P150, **d** P180, **e** P210, **f** P240, **g** P270, **h** P300, **i** P330, and **j** P360 with the dark phase contained within the gray box

and were hyperactive in overnight locomotor assessments. These results were consistent, not progressive, across the duration of this experiment, indicating that deletion of *Slc6a8* in dopaminergic neurons results in persistent hyperactivity in

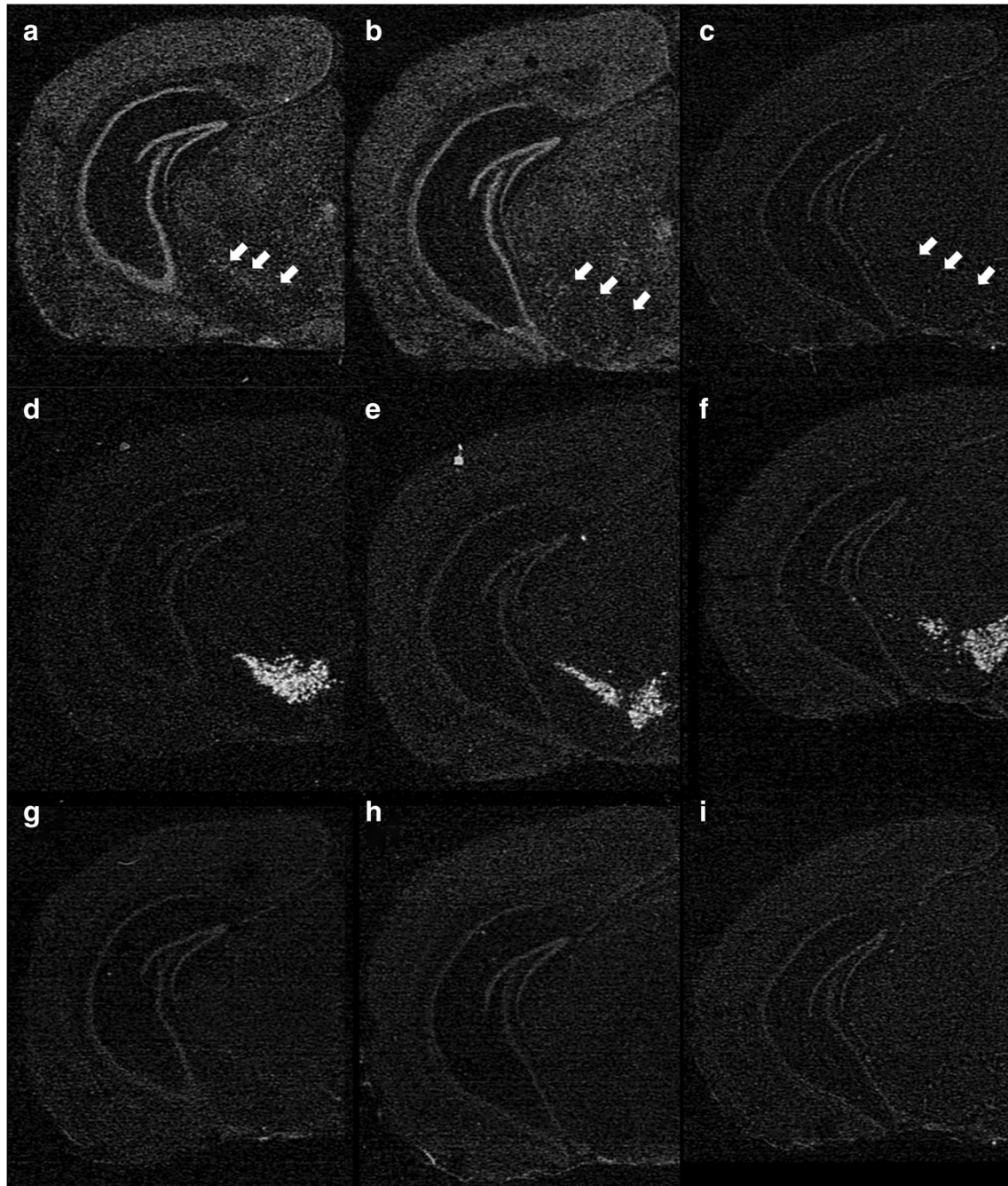


Fig. 6 *Confirmation of knockout.* **a–c** Film autoradiograms showing hemisections at the level of the ventral midbrain hybridized with either antisense *Slc6a8* cRNA, **d–f** TH cRNA or **g–i** control sense *Slc6a8* cRNA. Robust *Slc6a8* cRNA-labeling is present throughout the sections from the **a** *Slc6a8*^{+/y} and **b** dCrt^{-/-} mice; note, however, the absence of hybridization signal in the substantia nigra in the dCrt^{-/-} brain section (arrows in **b**; compare to same area in **a**). **c** Labeling for *Slc6a8* mRNA is

absent (only typical background expression) in sections from *Slc6a8*^{-/-} mouse brains. Panels **d–f** show TH cRNA labeling in sections semi-adjacent to panels **a–c**, respectively, and serve to identify the corresponding localization of dopaminergic cells in the ventral midbrain. Hybridization of semi-adjacent sections from each mouse genotype with the control sense *Slc6a8* cRNA probe reveals complete absence of labeling for *Slc6a8* mRNA (**g–i**)

mice. Additionally, *in situ* hybridization confirmed the successful targeted deletion of *Slc6a8* in DA neurons, as minimal expression of *Slc6a8* mRNA was observed in TH-rich regions of the dCrt^{-y} brain. Our results suggest that the *Slc6a8* gene plays an important role in DA-mediated locomotion.

The challenging beam task was designed to uncover subtle motor deficits that could provide translational value to human neurodegenerative disorders (Fleming 2004). For instance, mice exhibiting a Parkinson's-like phenotype display increased errors, steps to cross, and latency to cross the beam (Fleming 2004; Glajch et al. 2012). dCrt^{-y} mice did not show any deficits on challenging beam task. Instead, dCrt^{-y} mice had shorter latencies when crossing the tapered beam and never relied on more steps to cross the beam than control mice. Coupled with a lack of errors on this task, dCrt^{-y} performance on the challenging beam task appears to be mediated by a hyperactivity that apparently does not impair motor control.

Furthermore, in the spontaneous activity task, dCrt^{-y} mice had increased rearing behavior and hindlimb steps compared with *Slc6a8*^{fl/y} mice. Mice with motor deficits typically display a decrease in these behaviors (Schallert et al. 2000; Fleming 2004; Glajch et al. 2012; Pinto et al. 2016). These increases are indicative of hyperactivity (O'Neill and Gu 2013; Kostrzewa et al. 2015). Similarly, dCrt^{-y} mice were hyperactive in overnight locomotor activity assessments during both light and dark phases, compared with *Slc6a8*^{fl/y} controls. This hyperactivity was observed in 70% of the assessments. Taken together, these behavioral measures indicate that the dCrt^{-y} mice are hyperactive.

The purpose of this study was to evaluate the effect of DAT-specific deletion of *Slc6a8* affected motor behavior or activity levels. The results suggest that deletion of the *Slc6a8* gene in DA neurons is sufficient to induce a persistent, life-long hyperactivity while sparing motor function. CTD patients are frequently diagnosed with attention-deficit/hyperactivity disorder (ADHD) (van de Kamp et al. 2013). There are logistical issues, such as the size, distribution, and heterogeneity of brain regions containing DAT+ neurons that prevent Cr measurement in dopaminergic areas of dCrt^{-y} mice. However, multiple lines of evidence would suggest that deletion of *Slc6a8* leads to a significant reduction in Cr levels. *Slc6a8* appears to be the only means of Cr entry into neurons (Ohtsuki et al. 2002). This is shown by the lack of brain Cr in brain-specific *Slc6a8* knockouts (Udobi et al. 2018), where *Slc6a8* expression is likely unchanged in the microcapillary endothelial cells that allow Cr entry into the brain, and the decline of brain Cr following *Slc6a8* deletion in adult mice (Udobi et al. 2019). Further, the expression of Cr synthesis enzymes AGAT and GAMT are relatively low in the substantia nigra (Braissant et al.

2001). Therefore, it is possible but not likely that the *Slc6a8* deletion did not alter Cr levels in these regions. It should be noted that despite the expression of AGAT and GAMT, there has been no conclusive proof that the brain generates a significant amount of Cr through de novo synthesis. Even if Cr levels are unchanged, these results show that loss of *Slc6a8* expression in DA neurons leads to persistent hyperactivity, which is especially relevant given the high rate of ADHD in the CTD population. Future studies will look for attentional abnormalities in dCrt^{-y} mice. Because dCrt^{-y} mice display a robust hyperactivity, this may indicate the presence of an ADHD-like phenotype and potentially explain the high comorbidity of ADHD and CTD. Future studies will also examine the causes of the weight differences between dCrt^{-y} and control mice. DA is highly involved in motivation and it is possible that alterations to the dopaminergic system could lead to altered feeding behavior (Palmiter 2007).

Acknowledgments The authors would like to thank Marla K. Perna and Keila N. Miles for providing scientific input and proofreading this article.

Author Contributions Mr. Abdulla, Dr. Seroogy, and Dr. Skelton designed the experiment and drafted and edited the manuscript. Mr. Abdulla, Ms. Pahlevani, Ms. Lundgren, Ms. Pennington, and Mr. Udobi conducted and scored all experiments.

Funding Information This work was supported by National Institutes of Health grant HD080910 and a CARE grant from the Association of Creatine Deficiencies. Portions were supported by the Kerman Family Fund, the Selma Schottenstein Harris Lab for Research in Parkinson's, the Gardner Family Center for Parkinson's Disease and Movement Disorders, and the Parkinson's Disease Support Network, Ohio, Kentucky, and Indiana.

References

- Abdulla, Z. I., J. L. Pennington, A. Gutierrez and M. R. Skelton (2019). "Creatine transporter knockout mice (*Slc6a8*) show increases in serotonin-related proteins and are resilient to learned helplessness." bioRxiv: 641845
- Backman CM, Malik N, Zhang Y, Shan L, Grinberg A, Hoffer BJ, Westphal H, Tomac AC (2006) Characterization of a mouse strain expressing Cre recombinase from the 3' untranslated region of the dopamine transporter locus. *Genesis* 44(8):383–390
- Beninger RJ (1983) The role of dopamine in locomotor activity and learning. *Brain Res Rev* 6:173–196
- Benjamini Y, Krieger AM, Yekutieli D (2006) Adaptive linear step-up procedures that control the false discovery rate. *Biometrika* 93(3):491–507
- Birgner C, Nordenankar K, Lundblad M, Mendez JA, Smith C, le Greves M, Galter D, Olson L, Fredriksson A, Trudeau LE, Kullander K, Wallen-Mackenzie A (2010) VGLUT2 in dopamine neurons is required for psychostimulant-induced behavioral activation. *Proc Natl Acad Sci U S A* 107(1):389–394
- Braissant O, Henry H, Loup M, Eilers B, Bachmann C (2001) Endogenous synthesis and transport of creatine in the rat brain: an *in situ* hybridization study. *Mol Brain Res* 86(1–2):193–201

- Cecil KM, Salomons GS, William J, Ball S, Wong B, Chuck G, Verhoeven NM, Jakobs C, DeGrauw TJ (2001) Irreversible brain creatine deficiency with elevated serum and urine creatine: a creatine transporter defect? *Ann Neurol* 49:401–404
- Cunha MP, Martin-de-Saavedra MD, Romero A, Parada E, Egea J, Del Barrio L, Rodrigues AL, Lopez MG (2013) Protective effect of creatine against 6-hydroxydopamine-induced cell death in human neuroblastoma SH-SY5Y cells: involvement of intracellular signaling pathways. *Neuroscience* 238:185–194
- Cunha MP, Martin-de-Saavedra MD, Romero A, Egea J, Ludka FK, Tasca CI, Farina M, Rodrigues AL, Lopez MG (2014) Both creatine and its product phosphocreatine reduce oxidative stress and afford neuroprotection in an in vitro Parkinson's model. *ASN Neuro* 6(6):175909141455494
- deGrauw TJ, Salomons GS, Cecil KM, Chuck G, Newmeyer A, Schapiro MB, Jakobs C (2002) Congenital creatine transporter deficiency. *Neuropediatrics* 33:232–238
- Faraone SV (2018) The pharmacology of amphetamine and methylphenidate: relevance to the neurobiology of attention-deficit/hyperactivity disorder and other psychiatric comorbidities. *Neurosci Biobehav Rev* 87:255–270
- Fleming SM, (2004) Early and Progressive Sensorimotor Anomalies in Mice Overexpressing Wild-Type Human -Synuclein. *J Neurosci* 24(42):9434–9440
- Glajch KE, Fleming SM, Surmeier DJ, Osten P (2012) Sensorimotor assessment of the unilateral 6-hydroxydopamine mouse model of Parkinson's disease. *Behav Brain Res* 230(2):309–316
- Gomez-Lazaro M, Galindo MF, Concannon CG, Segura MF, Fernandez-Gomez FJ, Llecha N, Comella JX, Prehn JH, Jordan J (2008) 6-Hydroxydopamine activates the mitochondrial apoptosis pathway through p38 MAPK-mediated, p53-independent activation of Bax and PUMA. *J Neurochem* 104(6):1599–1612
- Hautman ER, Kokenge AN, Udobi KC, Williams MT, Vorhees CV, Skelton MR (2014) Female mice heterozygous for creatine transporter deficiency show moderate cognitive deficits. *J Inherit Metab Dis* 37(1):63–68
- Hemmerle AM, Dickerson JW, Herring NR, Schaefer TL, Vorhees CV, Williams MT, Seroogy KB (2012) (+/-)3,4-methylenedioxymethamphetamine ("ecstasy") treatment modulates expression of neurotrophins and their receptors in multiple regions of adult rat brain. *J Comp Neurol* 520(11):2459–2474
- Hosamani, R., S. R. Ramesh and Muralidhara (2010). "Attenuation of rotenone-induced mitochondrial oxidative damage and neurotoxicity in *Drosophila melanogaster* supplemented with creatine." *Neurochem Res* 35(9): 1402–1412
- Klivenyi P, Calingasan NY, Starkov A, Stavrovskaya IG, Kristal BS, Yang L, Wieringa B, Beal MF (2004) Neuroprotective mechanisms of creatine occur in the absence of mitochondrial creatine kinase. *Neurobiol Dis* 15(3):610–617
- Koob GF, Riley SJ, Smith SC, Robbins TW (1978) Effects of 6-hydroxydopamine lesions of the nucleus accumbens septi and olfactory tubercle on feeding, locomotor activity, and amphetamine anorexia in the rat. *J Comp Physiol Psychol* 92(5):917–927
- Kostrzewa, J. P., Kostrzewa, R. A., Kostrzewa, R. M., Brus, R., & Nowak, P. (2015). Perinatal 6-Hydroxydopamine Modeling of ADHD. *Curr Top Behav Neurosci*. doi:10.1007/7854_2015_397
- Lowe MT, Kim EH, Faull RL, Christie DL, Waldvogel HJ (2013) Dissociated expression of mitochondrial and cytosolic creatine kinases in the human brain: a new perspective on the role of creatine in brain energy metabolism. *J Cereb Blood Flow Metab* 33(8):1295–1306
- Matthews RT, Ferrante RJ, Klivenyi P, Yang L, Klein AM, Mueller G, Kaddurah-Daouk R, Beal MF (1999) Creatine and cyclocreatine attenuate MPTP neurotoxicity. *Exp Neurol* 157:142–149
- Newmeyer A, Cecil KM, Schapiro M, Clark JF, Degrauw TJ (2005) Incidence of brain creatine transporter deficiency in males with developmental delay referred for brain magnetic resonance imaging. *Dev Behav Pediatr* 26(4):276–282
- Numan S, Gall CM, Seroogy KB (2005) Developmental expression of neurotrophins and their receptors in postnatal rat ventral midbrain. *J Mol Neurosci* 27(2):245–260
- O'neil B, Gu HH (2013) Amphetamine-induced locomotion in a hyperdopaminergic ADHD mouse model depends on genetic background. *Pharmacol Biochem Behav* 103 (3):455–459
- Ohtsuki S, Tachikawa M, Takanaga H, Shimizu H, Watanabe M, Hosoya K, Terasaki T (2002) The blood-brain barrier creatine transporter is a major pathway for supplying creatine to the brain. *J Cereb Blood Flow Metab* 22(11):1327–1335
- Palmiter RD (2007) Is dopamine a physiologically relevant mediator of feeding behavior? *Trends Neurosci* 30(8):375–381
- Pinto M, Nissanka N, Peralta S, Brambilla R, Diaz F, Moraes CT (2016) Pioglitazone ameliorates the phenotype of a novel Parkinson's disease mouse model by reducing neuroinflammation. *Mol. Neurodegener* 11 (1). <https://doi.org/10.1186/s13024-016-0090-7>
- Przedborski S, Tieu K, Perier C, Vila M (2004) MPTP as a mitochondrial neurotoxic model of Parkinson's disease. *J Bioenerg Biomembr* 36(4):375–379
- Roberts DCS, Zis AP, Fibiger HC (1975) Ascending catecholamine pathways and amphetamine-induced locomotor activity: importance of dopamine and apparent non-involvement of norepinephrine. *Brain Res* 93:441–454
- Rosenberg EH, Almeida LS, Kleefstra T, deGrauw RS, Yntema HG, Bahi N, Moraine C, Ropers H, Fryns J, Degrauw TJ, Jakobs C, Salomons GS (2004) High prevalence of SLC6A8 deficiency in X-linked mental retardation. *Am J Hum Genet* 75:97–105
- Runegaard AH, Sorensen AT, Fitzpatrick CM, Jorgensen SH, Petersen AV, Hansen NW, Weikop P, Andreasen JT, Mikkelsen JD, Perrier JF, Woldbye D, Rickhag M, Wortwein G, Gether U (2018) Locomotor- and reward-enhancing effects of cocaine are differentially regulated by chemogenetic stimulation of Gi-signaling in dopaminergic neurons. *eNeuro* 5(3):ENEURO.0345–ENEU17.2018
- Sakai K, Gash DM (1994) Effect of bilateral 6-OHDA lesions of the substantia nigra on locomotor activity in the rat. *Brain Res* 633:144–150
- Schallert T, Fleming SM, Leasure JL, Tillerson JL, Bland ST (2000) CNS plasticity and assessment of forelimb sensorimotor outcome in unilateral rat models of stroke, cortical ablation, parkinsonism and spinal cord injury. *Neuropharmacology* 39 (5):777–787
- Seroogy KB, Herman JP (1997) In situ hybridization approaches to the study of the nervous system. In: Turner AJ, Bachelard HS (eds) *Neurochemistry: a practical approach* (2nd edition). Oxford University Press, Oxford, pp 121–150
- Skelton MR, Schaefer TL, Graham DL, Degrauw TJ, Clark JF, Williams MT, Vorhees CV (2011) Creatine transporter (CrT; Slc6a8) knockout mice as a model of human CrT deficiency. *PLoS One* 6(1):e16187
- Timenstein MA, Hu CX, Scicchitano MS, Narayanan PK, McFarland DC, Thomas HC, Schwartz LW (2005) Effects of 6-hydroxydopamine on mitochondrial function and glutathione status in SH-SY5Y human neuroblastoma cells. *Toxicol in Vitro* 19(4):471–479
- Udobi KC, Kokenge AN, Hautman ER, Ullio G, Coene J, Williams MT, Vorhees CV, Mabondzo A, Skelton MR (2018) Cognitive deficits and increases in creatine precursors in a brain-specific knockout of the creatine transporter gene Slc6a8. *Genes Brain Behav* 17(6):e12461
- Udobi, K. C., N. Delcimmuto, A. N. Kokenge, Z. I. Abdulla, M. K. Perna and M. R. Skelton (2019). "Deletion of the creatine transporter gene in neonatal, but not adult, mice lead to cognitive deficits." bioRxiv: 582320

- Ullio-Gamboa G, Udobi KC, Dezard S, Perna MK, Miles KN, Costa N, Taran F, Pruvost A, Benoit JP, Skelton MR, Lonlay P, Mabondzo A (2019) Dodecyl creatine ester-loaded nanoemulsion as a promising therapy for creatine transporter deficiency. *Nanomedicine (London)* 14(12):1579–1593
- van de Kamp JM, Betsalel OT, Mercimek-Mahmutoglu S, Abulhoul L, Grunewald S, Anselm I, Azzouz H, Bratkovic D, de Brouwer A, Hamel B, Kleefstra T, Yntema H, Campistol J, Vilaseca MA, Cheillan D, D'Hooghe M, Diogo L, Garcia P, Valongo C, Fonseca M, Frints S, Wilcken B, von der Haar S, Meijers-Heijboer HE, Hofstede F, Johnson D, Kant SG, Lion-Francois L, Pitelet G, Longo N, Maat-Kievit JA, Monteiro JP, Munnich A, Muntau AC, Nassogne MC, Osaka H, Ounap K, Pinard JM, Quijano-Roy S, Poggenburg I, Poplawski N, Abdul-Rahman O, Ribes A, Arias A, Yapfite-Lee J, Schulze A, Schwartz CE, Schwenger S, Soares G, Sznajder Y, Valayannopoulos V, Van Esch H, Waltz S, Wamelink MM, Pouwels PJ, Errami A, van der Knaap MS, Jakobs C, Mancini GM, Salomons GS (2013) Phenotype and genotype in 101 males with X-linked creatine transporter deficiency. *J Med Genet* 50(7):463–472
- van de Kamp JM, Mancini GM, Salomons GS (2014) X-linked creatine transporter deficiency: clinical aspects and pathophysiology. *J Inher Metab Dis* 37(5):715–733
- Wallimann T, Tokarska-Schlattner M, Schlattner U (2011) The creatine kinase system and pleiotropic effects of creatine. *Amino Acids* 40(5):1271–1296
- Wyss M, Kaddurah-Daouk R (2000) Creatine and creatinine metabolism. *Physiol Rev* 3(80):1107–1213
- Xiong N, Long X, Xiong J, Jia M, Chen C, Huang J, Ghoorah D, Kong X, Lin Z, Wang T (2012) Mitochondrial complex I inhibitor rotenone-induced toxicity and its potential mechanisms in Parkinson's disease models. *Crit Rev Toxicol* 42(7):613–632

Publisher's Note Springer Nature remains neutral with regard to jurisdictional claims in published maps and institutional affiliations.