

# Metabolism and immunity in breast cancer

Deyu Zhang, Xiaojie Xu (✉), Qinong Ye (✉)

*Department of Medical Molecular Biology, Beijing Institute of Biotechnology, Beijing 100850, China*

© Higher Education Press 2020

**Abstract** Breast cancer is one of the most common malignancies that seriously threaten women's health. In the process of the malignant transformation of breast cancer, metabolic reprogramming and immune evasion represent the two main fascinating characteristics of cancer and facilitate cancer cell proliferation. Breast cancer cells generate energy through increased glucose metabolism. Lipid metabolism contributes to biological signal pathways and forms cell membranes except energy generation. Amino acids act as basic protein units and metabolic regulators in supporting cell growth. For tumor-associated immunity, poor immunogenicity and heightened immunosuppression cause breast cancer cells to evade the host's immune system. For the past few years, the complex mechanisms of metabolic reprogramming and immune evasion are deeply investigated, and the genes involved in these processes are used as clinical therapeutic targets for breast cancer. Here, we review the recent findings related to abnormal metabolism and immune characteristics, regulatory mechanisms, their links, and relevant therapeutic strategies.

**Keywords** breast cancer; metabolism; immunity; cancer stem cells

## Introduction

Breast cancer, the second most common malignancy, accounts for 16.1% of all new cases of female cancer in China in 2014 [1]. Current therapies, including surgery, chemotherapy, radiotherapy, and endocrine and target therapy, have achieved remarkable advances. However, disadvantages, such as drug resistance and bone marrow suppression, limit the effectiveness of available therapies. In addition, these treatments have little effect on the triple negative breast cancer (TNBC). Therefore, further understanding of the mechanisms of breast cancer may contribute to the treatment of patients with breast cancer. In recent years, research on the abnormal metabolism of cancer cells, which is regarded as a promising field for cancer therapy, has become the focus. The Nobel Prize in Physiology or Medicine in 2018 is awarded to Tasuku Honjo and James Allison for their contributions to cancer immunotherapy. Immunotherapy exhibits great potentials in cancer treatment. Interestingly, the abnormal metabolism seems to be inextricably linked to a dysfunctional

immune system in cancer cells [2,3]. In this review, advances in abnormal metabolism and immunity in breast cancer are provided.

## Breast cancer and subtypes

Increasing reports on breast cancer focus on the variations in metabolism among breast cancer subtypes. The molecular and metabolism characteristics are also different between estrogen receptor (ER)-positive and ER-negative breast cancers [4]. ER-positive breast cancers are divided into two subtypes, namely, luminal A and luminal B. ER-negative breast cancers are also divided into HER2-enriched and basal-like subtypes (i.e., TNBC). Luminal B tumors mainly depend on lipid metabolism for tumor growth, but HER2 and basal-like breast cancers (BLBCs) prefer to alter glucose/glutamine metabolism [5]. The features of metabolism in various subtypes of breast cancer are discussed below.

## Breast cancer subtypes

ER-positive breast cancers are the most common types of breast cancer. This subtype is further divided into two subtypes, namely, luminal A and luminal B. At the DNA level, luminal A tumors show few mutations across the

Received September 29, 2019; accepted April 17, 2020

Correspondence: Xiaojie Xu, miraclxj@126.com;  
Qinong Ye, yeqn66@yahoo.com

genome, low chromosomal copy-number changes, low Ki67 expression, and few p53 mutations. Luminal A tumors tend to decrease the clinical grade, and majority of these tumors shows good prognosis and low recurrence score.

Compared with luminal A tumors, luminal B tumors have higher number of mutations across the genome, higher number of chromosomal copy-number changes, and more p53 mutations at the DNA level [6]. Luminal B tumors have the most methylation frequencies among breast cancer subtypes [7] and tend to show high clinical grade and high recurrence and/or survival rate.

The HER2-enriched subtype represents nearly 15% among breast cancers [8], showing the overexpression of HER2, a member of the erythroblastic leukemia viral oncogene homolog receptor family. HER2 is an important oncodriver that promotes cell proliferation and inhibits cell apoptosis in breast cancer [9]. At the DNA level, the HER2-enriched subtype shows the highest rates of mutations, including PIK3CA and p53 mutations, across the genome. The HER2-enriched subtype tends to have high grade and poor prognosis [10]. Interestingly, the HER2-enriched subtype is found in the tumors uniquely enriched with high frequency of mutations of the apolipoprotein B mRNA editing enzyme catalytic subunit 3B (APOBEC3B). The APOBEC3B, a subclass of APOBEC cytidine deaminases, is mutated in many cancer types [11]. A growing body of literature suggests that amplified HER2 plays an important role in regulating breast cancer stem cells (BCSCs) related to drug resistance and recurrence [12–14]. The regulation of BCSCs by HER2 is likely to be found in other breast cancer subtypes. In other subtypes, the HER2 expression has heterogeneity in BCSC populations, which may be related to the tumor microenvironment. According to this phenomenon, trastuzumab, a drug approved to be used for the treatment of the HER2-enriched subtype, may be effective in some patients with HER2-negative breast cancer [15].

BLBC, which constitutes at least 10% of breast cancers, has a unique genomic signature and the greatest intrinsic diversity [16]. Among breast cancers, BLBC has the lowest methylation frequencies and the second highest mutation frequency after the HER2-enriched subtype at the DNA level. BLBC has a mass of PIK3CA and p53 mutations. Interestingly, BLBCs may be associated with breast cancer susceptibility gene-1 (BRCA-1) mutations, which may cause hereditary breast cancer [17]. BLBCs have the worst prognosis among the breast cancer subtypes.

### **Glucose metabolism among breast cancer subtypes**

As described above, most mutations of p53 occur in the basal-like and HER2-enriched tumors [6]. The wild-type p53 can promote aerobic respiration and inhibit glycolysis

by regulating the expression of cytochrome c oxidase complex (COX), cytochrome c oxidase 2 (SCO2), p53-induced glycolysis, and apoptosis regulator (TIGAR) [18]. In breast cancer cells, the mutation of p53 shifts normal glucose metabolism toward aerobic glycolysis [19,20]. The phosphatidylinositol 3-kinase (PI3K) mutation frequencies are the highest in ER-positive breast cancers and can stimulate glycolysis through the PI3K/Akt/mTOR signaling pathway [21]. The expression level of c-Myc is remarkably elevated in BLBCs, thereby promoting aerobic glycolysis and lactate production [22]. Simultaneously, c-Myc also drives glutamine metabolism by enhancing glutamine transporters and glutaminase (GLS) expression [23,24].

The accumulation of downstream glycolytic intermediates varies among the breast cancer subtypes. The levels of glucose-6-phosphate and fructose-6-phosphate are lowest in the luminal A subtype and highest in BLBC. The levels of fructose-1,6-bisphosphate (F1,6BP) vary between ER-positive and ER-negative breast tumors [5] due to highly expressed epidermal growth factor (EGF) signaling in the BLBC, which activates the initial step but blocks the last step during glycolysis. In turn, F1,6BP enhances the activity of the EGF receptor (EGFR) by direct binding, thereby increasing the excretion of lactate in TNBC [25]. Moreover, several intermediates of the pentose phosphate pathway (PPP), such as ribulose 5-phosphate and xylulose 5-phosphate, are elevated in the HER2-enriched molecular subtype. Overall, the glucose utilization is drastically enhanced in ER-negative breast cancers [5].

### **Amino acid and lipid metabolism among breast cancer subtypes**

Glutamine metabolism, which varies substantially among breast cancer subtypes, is important and studied well among amino acid metabolism. The deprivation of glutamine can inhibit the malignant progression of breast cancer especially in malignant subtypes. Among breast cancer subtypes, the HER2-enriched subtype has the highest glutamine metabolic level because of the elevated expression of GLS and glutamate dehydrogenase (GLUD) [26–28]. In addition, in the HER2-enriched subtype, increased levels of peroxisome proliferator-activated receptor  $\gamma$  (PPAR $\gamma$ ) and coactivator-1 $\alpha$  (PGC-1 $\alpha$ ) lead to the overexpression of GLS and GLUD1. High GLS and GLUD1 expression levels are correlated with poor clinical outcome in patients with breast cancer [29].

In recent years, increasing investigations show considerably different characteristics of lipid metabolism among the breast cancer subtypes [30]. A study suggests that TNBC needs glucose glutamine and requires more exogenous lipid uptake and storage than receptor-positive breast cancers [31]. Camarda *et al.* have performed metabolomics and shown that fatty acid oxidation (FAO)

intermediates, such as acyl-carnitines (AC), are drastically elevated in MYC-driven TNBC [32]. The gene signature associated with lipid metabolism implicates that FAO is the critical metabolism pathway for TNBC.

## Breast cancer and abnormal metabolism

The breast cancer metabolism has also been investigated regardless of the breast cancer subtype. The remodeling of cancer cell metabolism represents an essential hallmark of cancers, including breast cancer (Table 1) [33,34]. Breast cancer cells enhance aerobic glycolysis (“Warburg effect”) to produce lactate for the tumor microenvironment. Breast cancer cells utilize folate and acetate to accelerate lipid biosynthesis and need glutamine, which protects cells from reactive oxygen species (ROS) elevation and apoptosis. Thus, the abnormal metabolism may act as potential and effective targets for breast cancer treatment.

### Breast cancer and glucose metabolism

Glucose metabolism, a major energy source, is upregulated and dysfunctional in cancer cells, including breast cancer cells (Fig. 1). In general, glucose metabolism includes aerobic glycolysis, PPP, tricarboxylic acid cycle (TCA), gluconeogenesis, and other approaches. Here, we introduce the first four glucose metabolic pathways in breast cancer.

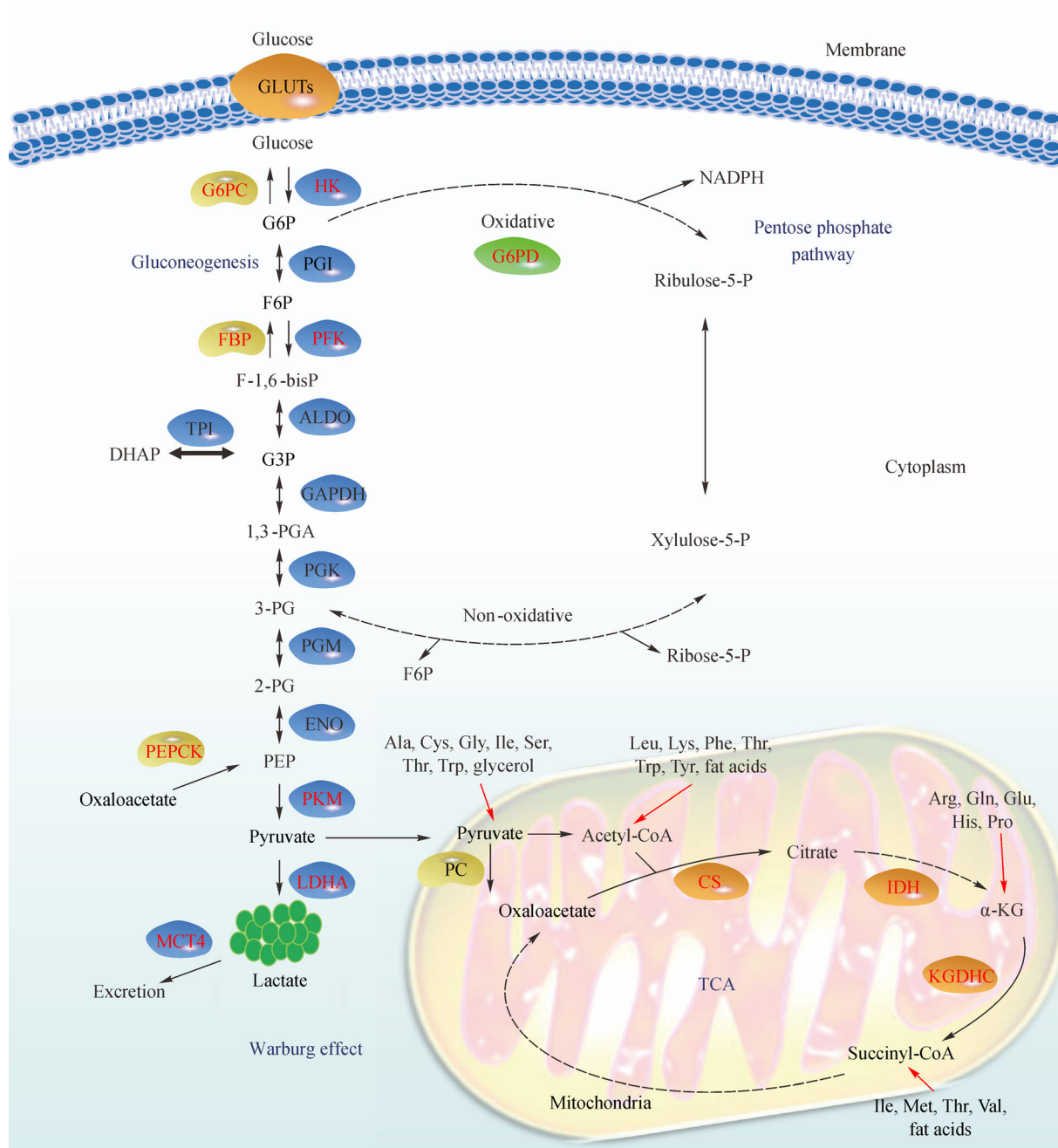
#### *Warburg effect*

Cancer cells are still metabolized primarily by high glycolysis even under sufficient oxygen. This phenomenon, known as aerobic glycolysis or the Warburg effect, contributes to cancer cell proliferation and metastasis [43]. Glucose is eventually converted into lactate in the

cytoplasm by the Warburg effect. More than 10 genes encoding glucose transporters (GLUTs) and glycolytic enzymes play important roles in the Warburg effect. In the first step, the effective transport of glucose contributes to the abundant glucose consumption in cancer cells, the phenomenon of which is caused by the overexpression of GLUTs [44]. In breast cancer, high levels of GLUT1 expression is associated with tumor subtypes, high grade, and poor prognosis [45]. However, the upregulated GLUT family expression cannot fully explain the increased effective glucose transport in breast cancer, suggesting the involvement of another GLUT. Sodium–glucose cotransporter 1 (SGLT1) can utilize sodium gradients to maintain intracellular glucose levels independent of extracellular glucose concentration. The expression of SGLT1 is upregulated in many cancer types and regulates EGFR activity to promote cell growth in TNBC [46–49]. In the second step, intracellular glucose is converted into pyruvate under the catalysis of nine types of glycolytic enzymes. Three key enzymes act as rate-limiting agents, including HK2, PFK, and PKM, and have high expression levels, facilitating the malignant development in breast cancer cells [50–52]. For example, the expression level of HK2 determines the malignant degree and the phenotype of breast cancer *in vitro* and *in vivo* models [53]. In the third step, even in the presence of oxygen, lactate dehydrogenase (LDH) still converts pyruvate into lactate in cancer cells. The LDH family includes LDHA, LDHB, LDHC, and LDHD [54]. LDHA plays an important role in aerobic glycolysis in breast cancer because of the high affinity for pyruvate compared with LDHB [55]. In breast cancer cells, the high levels of LDHA contribute to promote cancer cell proliferation, invasion, and even epithelial mesenchymal transition [54]. Overall, the Warburg effect is essential for the breast cancer cell malignant development and growth.

**Table 1** Abnormal metabolism in breast cancer

Metabolism	Specific classification of metabolism	Level of metabolism in breast cancer	Reference
Glycometabolism	Glucose uptake	Increase	[35]
	Warburg effect	Increase	[1]
	TCA cycle	Abnormal	[1]
	Pentose phosphate pathway	Increase	[36]
	Gluconeogenesis	Decrease	[37]
Lipid metabolism	Fatty acid uptake	Uncertain but important	[38]
	<i>De novo</i> fatty acid synthesis	Increase	[39]
	Fatty acid oxidation	Increase	[40]
Amino acid metabolism	Glutamine metabolism	Increase	[41]
	Serine and glycine metabolism	Increase	[42]
	Cysteine metabolism	Increase	[42]
	Arginine metabolism	Uncertain	[42]



**Fig. 1** Glucose metabolism. HK, PFK, and PK are the three key enzymes in glycolysis. G6PD regulates the rates of the PPP by catalyzing the oxidation. In general, pyruvate is oxidized into carbon dioxide and water in the mitochondria, which is catalyzed by three key enzymes, namely, CS, IDH, and KGDHC. Pyruvate is converted to lactate by LDHA in cancer cells, and lactate is expelled from the cell by MCT4. Gluconeogenesis can influence glycolysis, TCA, PPP, and other processes indirectly via the rates of glucose production. Three key enzymes control the gluconeogenic flux, including PEPCK, FBP, and G6PC. Abbreviations: G6P, glucose 6-phosphate; F6P, fructose 6-phosphate; F-1,6-bisP, fructose-1,6-bisphosphate; G3P, glyceraldehyde 3-phosphate; 1,3-PGA, 1,3-disphosphoglycerate; 3-PG, glyceraldehyde 3-phosphate; 2-PG, glyceraldehyde 2-phosphate; PEP, phosphoenolpyruvate; TCA, tricarboxylic acid cycle;  $\alpha$ -KG,  $\alpha$ -ketoglutarate; GLUTs, glucose transporters; HK2, hexokinase 2; GAPDH, glyceraldehyde-3-phosphate dehydrogenase; PFK, 6-phosphofructo kinase; ALDO, aldolase; TPI, triose phosphate isomerase; PGK, phosphoglycerate kinase; PGM, phosphoglycerate mutase; ENO1, enolase; PKM, pyruvate kinase; LDH, lactate dehydrogenase; MCT, monocarboxylate transporter; CS, citrate synthase; IDH, isocitrate dehydrogenase; KGDHC,  $\alpha$ -ketoglutarate dehydrogenase complex; G6PD, glucose 6-phosphate dehydrogenase; PC, pyruvate carboxylase; PEPCK, phosphoenolpyruvate carboxykinase; FBP, fructose-1,6-bisphosphatase; G6PC, glucose-6-phosphatase.

### PPP

The PPP, a glycolysis branch, produces NADPH and ribose-5-phosphate. The PPP serves a pivotal role in supporting nucleic acid and fatty acid (FA) syntheses and protects cells from stress-induced death [56]. The PPP follows two biochemical processes in the cytoplasm, namely, oxidative and nonoxidative processes.

Cancer cells can improve PPP through various channels and ways, thereby promoting proliferation and survival [36]. The glucose 6-phosphate dehydrogenase (G6PD) regulates the rates of the PPP by catalyzing the irreversible step. The expression levels of G6PD are different in various breast cancer subtypes and positively correlated with poor prognosis in patients [57]. In addition to the function in PPP, the low expression level of G6PD may activate the AMP-activated protein kinase (AMPK) signaling pathway and inhibit the breast cancer cell proliferation and survival [58].

### TCA

The TCA cycle is a series of chemical reactions that generate energy and/or intermediate products through the oxidation of pyruvate into carbon dioxide and water [59]. The TCA cycle is very important for many biochemical pathways, such as energy metabolism, macromolecule synthesis, and redox balance. However, the TCA cycle is regarded as a process in which enzymes have valueless mutation and pointless regulatory function. However, recent reports show that a number of mutations in genes encoding enzymes, including aconitase, isocitrate dehydrogenase 1 (IDH1), fumarate hydratase, and succinate dehydrogenase in the TCA cycle raise the risk of some cancer types [60–63]. Mutations in the genes of mitochondrial DNA, such as the genes encoding ATPase 6 and NADH dehydrogenase subunit, which cause TCA cycle dysfunction, are the most commonly mutated genes in breast cancer [64].

### Gluconeogenesis

Gluconeogenesis converts noncarbohydrate carbon substrates to free glucose for energy. Gluconeogenesis, which affects the regulation of the Warburg effect in cancer cells, has been paid less attention than glucose catabolism [37]. Gluconeogenesis can influence glycolysis, TCA, PPP, and other approaches indirectly via the rates of glucose production. Three key enzymes control the gluconeogenic flux, including phosphoenolpyruvate carboxykinase (PEPCK), fructose-1,6-bisphosphatase (FBPase), and glucose-6-phosphatase. For example, in

addition to increasing the synthesis of glucose and glutamine, PEPCK can accelerate the rates at which noncarbohydrate substances are converted to ribose [65]. In addition, the high levels of FBPase are positively correlated with breast cancer metastases, suggesting that gluconeogenesis may be another potential target for metabolic treatment in patients with breast cancer [66].

### Breast cancer and lipid metabolism

In recent years, the dysfunctional lipid metabolism is progressively being regarded as a hallmark of cancer (Fig. 2). Clinical data show that postmenopausal obese women have a 20%–40% higher risk of developing breast cancer than lean women [67]. Except generating energy and forming cell and organelle membranes, lipids can transduce biological signals as second messengers.

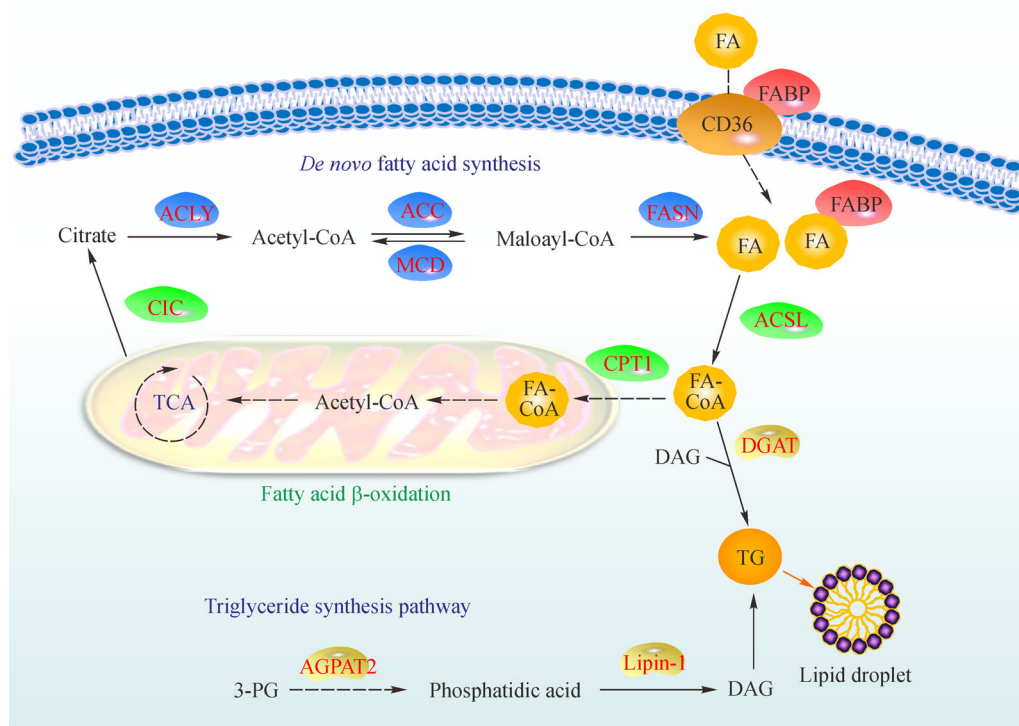
Lipid metabolism includes three aspects, namely, *de novo* FA synthesis, FA uptake and transport, and FAO. During malignant transformation, unlike normal tissues, cancer cells upregulate *de novo* synthesis instead of lipid uptake to meet the increasing demand for biomass production [68,69]. The lipid uptake and storage increase in various cancer types [70–72]. In breast cancer, several lipid metabolic genes are closely related to the malignancy of tumors, such as proliferation, metastasis, and drug resistance [73,74].

#### *De novo* FA synthesis

In the *de novo* synthesis, FA is synthesized from two sources, namely, glucose and glutamine. Glucose is the major substrate for the *de novo* FA synthesis [75,76] and catalyzed into acetyl-CoA or/and citrate, which are the precursors for FAs, through glycolysis and TCA. In addition, glutamine, the most abundant amino acid in body, can participate in the FA synthesis through the conversion in TCA in the mitochondria [77,78].

In the first step of the *de novo* FA synthesis, ATP citrate lyase (ACLY) catalyzes citrate to acetyl-CoA, thereby connecting lipid metabolism and two other kinds of metabolism, namely, glucose and amino acid metabolism. The overexpression of ACLY promotes tumor cell growth in various cancer types especially breast cancer [79]. In addition to its catalysis, ACLY suppresses cell senescence by inhibiting the AMPK activity directly and the p53 expression indirectly [80]. AMPK can phosphorylate and inactivate acetyl-CoA carboxylase (ACC) 1, thus strongly inhibiting FA synthesis [81].

In another rate-limiting step, ACC converts acetyl-CoA to malonyl-CoA. Conversely, malonyl-CoA decarboxylase catalyzes the reverse reaction, whereas malonyl-CoA is oxidized and decomposed into carbon dioxide and acetyl-CoA. Mammalian cells control the balance between FA



**Fig. 2** Lipid metabolism. In the *de novo* fatty acid synthesis, citrate is catalyzed into FA by ACLY, ACC, and FASN sequentially. CD36 and FABPs are involved in the intake of FA. FA needs to be transformed to FA-CoA before they enter the subsequent metabolism, including anabolism or catabolism. During fatty acid  $\beta$ -oxidation, FA-CoA is transported into the mitochondria and then oxidized, the rate of which is limited by CPT1. FA-CoA and DAG are synthesized into TG catalyzed by DGAT. During triglyceride synthesis, the glycolytic intermediate 3-PG is converted into DAG by AGPAT2 and lipin-1, and DAG is ultimately converted into TG. Abbreviations: ACLY, ATP citrate lyase; ACC, acetyl-CoA carboxylase; FASN, fatty acid synthase; FABP, fatty acid binding protein; AGPAT2, acylglycerol-3-phosphate acyltransferase 2; CPT1, carnitine palmitoyltransferase 1; CIC, citrate carrier; FA, fatty acid; TG, triglyceride; DAG, diacylglycerol; 3-PG, glyceraldehyde 3-phosphate; DGAT, diacylglycerol acyltransferase; AGPAT2, acylglycerol-3-phosphate acyltransferase 2.

synthesis and degradation by the malonyl-CoA levels.

In FA anabolism, FA synthase (FASN) utilizes malonyl-CoA and acetyl-CoA to synthesize a saturated FA. Among the many critical enzymes of lipid metabolism, FASN is a key and elevated metabolic oncogene in many cancer types. The activity of FASN is positively correlated with cancer progression and chemoresistance. According to almost 200 cases of metastatic breast cancer, the positivity rates of FASN are correlated with the positivity of HER-2 [82]. Furthermore, the overexpression of FASN is remarkably associated with relapse and metastasis in patients with HER2-enriched breast cancer. In nontumorigenic breast epithelial cell lines (MCF10A), the HER2 overexpression can upregulate the expression level of FASN.

### FAO

Lipolysis involves two procedures: mobilization of lipid droplets (LDs) and FAO. Previous evidence suggests that

mobilization of LDs by lipolysis is attributed by the LD-associated lipases and autophagy-lysosome pathway [83]. FAO occurs in the mitochondria. FAs must be converted to FA-CoA to enter subsequent metabolic reactions, including anabolism or catabolism. This central reaction is catalyzed by long-chain acyl-coenzyme A synthase (ACSL). Five ACSL isoforms, including ACSL1, ACSL3, ACSL4, ACSL5, and ACSL6, are present in the human organism. ACSL4 is remarkably overexpressed in invasive breast cancers. Moreover, ER signaling pathways can regulate the levels of ACSL1, ACSL4, and ACSL5 [84]. ACSL4 can downregulate the antineoplastic drug sensitivity by promoting the expression of drug resistance genes in cancer cells [85].

### FA uptake and transport

For a long time, the vast bulk of investigative effort on FA and cancers has focused on the *de novo* FA synthesis. However, the exogenous FA uptake is essential for cancer

cell proliferation. The absorption of exogenous palmitate can protect breast cancer cells from the proapoptotic effect of FASN inhibition [86]. Compared with normal diet intake, a high-fat intake independently increases breast cancer incidence in mice or in Sprague Dawley rats [87].

In addition, attention has been paid to the abnormal localization of FAs in cancer cells. The FA-binding protein 4 (FABP4) transports FAs to various cellular compartments to exert various metabolic functions. The FABP4 can regulate the gene expression and the malignant phenotype in breast cancer aside from the uptake and the intracellular storage of FAs [88–90]. For example, exogenous FABP4 elevates the expression levels of the FA transport proteins CD36 and FABP5 and promotes the proliferation of breast cancer cells [91].

### Breast cancer and amino acid metabolism

The increase in amino acid synthesis satisfies the demands of rapid proliferation in breast cancer cells (Fig. 3). Besides the primary units of proteins, amino acids act as regulated metabolite to support cancer cell growth. Fifteen amino acids are identified with remarkably elevated levels compared with normal samples, which can serve as hallmarks for the early diagnosis of breast cancer [92]. Among these research, glutamine, serine, and glycine are given attention.

#### *Glutamine metabolism*

The increased metabolism of glutamine, the most abundant free amino acid, is a common metabolic alteration in cancer [93]. GLS converts glutamine to glutamate, which is the initial step in glutamine catabolism. The GLUD1 catalyzes glutamate to  $\alpha$ -ketoglutarate ( $\alpha$ -KG). These two enzymes dominate the rate of glutamine metabolism. The glutamine metabolism affects the chemotherapy resistance of cancer cells. In endocrine-resistant breast cancer cells, overexpression of cellular-myelocytomatosis (c-Myc) can use glutamine to support enough metabolism by enhancing the GLS expression in the short-term glucose deprivation, thus maintaining cell survival [24,94]. Moreover, cancer cells can generate several ATP through oxidative phosphorylation driven by glutamine [95].

In addition, cancer cells require effective amino acid transport proteins to bring amino acids in and out of the cell plasma membrane. Amino acid transport proteins are membrane-bound solute carrier transporters. In breast cancer, glutamine is heavily consumed for proliferation and survival, and its intracellular concentration is regulated by high-efficiency amino acid transport proteins especially SLC1A5 and SLC7A5 [96]. In TNBC, overexpressed SLC1A5, SLC7A5, and SLC6A14 promote glutamine metabolism and tumor growth [97,98].

#### *Serine and glycine metabolism*

The increased serine synthesis promotes cell proliferation by providing raw materials for biosynthesis in breast cancer [99,100]. In serine synthesis pathways, the glycolytic intermediate 3-phosphoglycerate is oxidized into serine, catalyzed by phosphoglycerate dehydrogenase (PHGDH), phosphoserine aminotransferase, and phosphate ester hydrolysis (PSPH). In addition, serine can be converted into glycine, whose methyl groups can provide one-carbon metabolism required for synthesis of folate and other organic substances. Glycine is also an integral part of glutathione, which sustains the redox balance in mammalian cells. A recent report has suggested that suppressing the uptake and the biosynthesis of glycine may selectively impair rapidly proliferating cells by prolonging the G<sub>1</sub> phase of the cell cycle [101]. Therefore, targeting glycine may inhibit cancer cell growth without damaging normal cells.

Several enzymes involved in serine and glycine metabolism are considered hallmarks for the malignancy of tumors. The expression levels of PHGDH, PSPH, and SHMT are elevated in TNBC and decreased in luminal A [102], and these results are inversely proportional to the clinical prognosis [101]. Interestingly, serine deficiency inhibits cell growth in several breast cancer cell lines. Additionally, when serine is depleted, cancer cells unexpectedly replenish serine by exhausting glycine and one-carbon units and even nucleotide pools. The above phenomenon indicates that serine plays an important role in supporting cell proliferation by the mechanisms besides one-carbon metabolism in breast cancer cells [103].

### Master transcription factors for glucose, lipid, and amino acid metabolism

#### *Hypoxia-inducible factor (HIF) 1*

Hypoxia is regarded as an essential regulator in the development of breast cancer. HIFs especially HIF1 play a crucial role in cellular hypoxia adaptation [104]. HIF1 are heterodimers composed of an O<sub>2</sub>-regulated subunit (HIF1 $\alpha$ ) and a constitutively expressed subunit (HIF1 $\beta$ ) [105].

The HIF1 expression is upregulated dramatically in TNBC [6]. The high level of HIF1 is a marker of poor clinical outcomes in human breast cancer [106,107]. Mechanically, HIF1 has important function on multiple malignant aspects of breast cancer, including proliferation, metastasis, pathological damage, and poor prognosis [108–113]. For example, HIF1 promotes primary tumor growth and metastasis to lung by upregulating the expression of

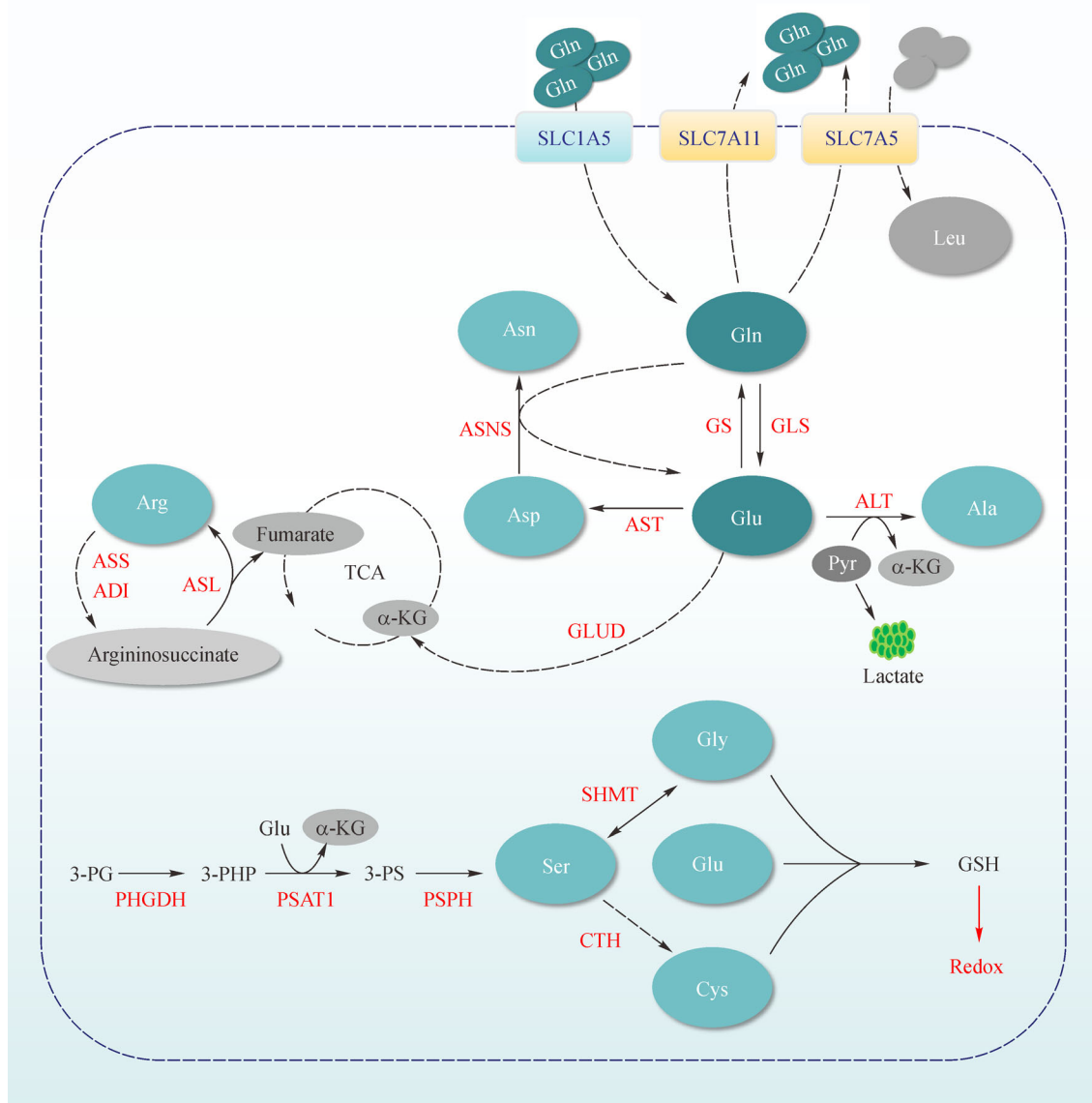


angiopoietin-like 4 and L1 cell adhesion molecule (L1CAM) in breast cancer [114].

In breast cancers, the overexpression of HER-2 increases the HIF1 $\alpha$  protein expression via the PI3K/AKT/FRAP pathway under normoxic conditions [115]. Conversely, HIF1 $\alpha$  can be degraded by von Hippel–Lindau

(VHL), thus inhibiting breast cancer cell invasiveness and metastatic propensity [116,117]. SHARP1, an important regulator of tumor-malignant phenotype, also promotes the independent HIF-1 $\alpha$  proteasomal degradation of oxygen levels and VHL [118].

Given that many cancer cells are exposed to hypoxic



**Fig. 3** Amino acid metabolism. Glutamine uptake is regulated by SLC1A5, SLC7A5, and SLC7A11. Glutamine is converted into glutamate by GLS, and the counter-reaction is catalyzed by GS. GLUD catalyzes glutamate to  $\alpha$ -KG. Glutamate is converted into alanine by ALT and converted into aspartic acid by AST. ASNS utilizes glutamine as a nitrogen donor to turn aspartic acid to asparagine. In addition, the glycolytic intermediate 3-PG is oxidized into serine catalyzed by PHGDH, PSAT1, and PSPH. Serine is converted into glycine by SHMT and converted into cysteine catalyzed by CTH. Glutamate, glycine, and cysteine are synthesized into GSH, which sustains the redox balance. Abbreviations: Ala, alanine; Glu, glutamate; Gln, glutamine; Aln, asparagine; Asp, aspartic acid; Gly, glycine; Ser, serine; Leu, leucine; Asn, asparagine; Cys, cysteine;  $\alpha$ -KG,  $\alpha$ -ketoglutarate; GSH, glutathione; PHGDH, phosphoglycerate dehydrogenase; PSAT1, phosphoserine aminotransferase; PSPH, phosphate ester hydrolysis; SHMT, serine hydroxymethyltransferase; ALT, alanine aminotransferase; AST, aspartate aminotransferase; GS, glutamine synthetase; GLS, glutaminase; GLUD, glutamate dehydrogenase; ASNS, asparagine synthetase; 3-PG, 3-phosphoglycerate; ASS, argininosuccinate synthetase; ASL, argininosuccinate lyase; ADI, arginine deiminase; ASNS, asparagine synthetase; SLCs, membrane-bound solute carriers; CTH, cystathionine  $\gamma$ -lyase.



environments during malignant tumor growth, the metabolic reprogramming from OXPHOS to aerobic glycolysis is recognized as cancer cell adaptation to hypoxia. HIF1 is remarkably associated with abnormal glucose metabolism in various cancer types [119–121]. GLUT1 is responsible for basal glucose uptake to maintain the Warburg effect with increased glucose consumption in cancer cells. The expression level of GLUT1 is positively regulated by HIF1 [122]. Moreover, HIF1 can regulate 8 of 9 types of enzymes involved in glycolysis (Table 2), including HK2, GAPDH, PFK1, ALDOA, TPI, PGK1, ENO1, and PKM2 [123–126]. Although the evidence of a regulatory relationship between PGM and HIF1 is unclear, hypoxia increases the PGM levels [127]. Pyruvate is further metabolized to lactate, but not acetyl coenzyme A, through glycolysis by LDHA in cancer cells. The high expression level of LDHA is associated with HIF1 [128]. Furthermore, HIF1 can reduce OXPHOS by activating the pyruvate dehydrogenase kinase 1 (PDK1) expression, which partly explains the Warburg effect in breast cancer.

Although the relationship between HIF1 and glucose metabolism has been extensively studied, the HIF1 function on lipid metabolism is nearly the focus of recent research. HIF1 upregulates the expression of sterol

regulatory element binding protein (SREBP) 1 under hypoxia. SREBP1 can upregulate lipid synthesis genes, such as *ACLY*, *ACC1*, and *FASN* [129]. The SREBP1 activity has recently been shown to be controlled by the Akt/mTOR signaling, which are potently activated by the oncogenic HER2 signaling [130,131]. In addition, HIF1 directly activates the expression of transcription factor PPAR $\gamma$ , which regulates the expression of genes involved in lipid storage and mobilization [132].

HIF1 can enhance exogenous FA uptake by promoting the FABP expression in cancer cells under hypoxia. Given the extremely low level of FA oxidation without oxygen, cells can convert FAs to neutral TAGs to avoid the lipotoxicity of accumulated free FAs [133]. The TAG biosynthesis pathway enzymes acylglycerol-3-phosphate acyltransferase 2 and lipin-1, the two direct targets of HIF1, regulate the lipid droplet accumulation [134,135]. HIF1 also supports the lipid accumulation under hypoxia by inhibiting the expression of enzymes involved in FA degradation [136–138]. Considering that HIF1 has not been shown to have a direct effect on the inhibition of the transcription of these genes, the expression of these enzymes may be regulated indirectly through HIF1 target genes [139].

**Table 2** Hypoxia-inducible factor 1 (HIF1) downstream targets that regulate metabolism

Metabolism	Genes	Functional category of genes	Role of HIF1 in metabolism	Reference
Glycometabolism	GLUT1	Glucose uptake	Increase	[140]
	GLUT3			[141]
	HK2	Glucose phosphorylation	Increase	[142]
	PGI	Glycolysis	Increase	[143]
	PFK1			[143]
	ALDOA			[143]
	TPI			[143]
	GAPDH			[143]
	PGK1			[143]
	ENO1			[143]
	PKM2			[143]
	LDHA			[143]
	PFKFB3			[144]
	MCT4	Lactate excretion	Increase	[145]
	PDK1	OXPHOS inhibition	Increase PDK1 expression	[143]
	MXI1			[143]
Lipid metabolism	PPAR $\gamma$	Lipid uptake	Increase	[132]
	FABPs			[139]
	LRP1			[146]
	VDLR			[147]
	SREBP-1	Lipid synthesis	Increase	[148]
	FASN			[148]
	Lipin-1			[134]
	AGPAT2			[135]
	HIG2	Lipid accumulation	Increase	[149]
	CPT1	FA $\beta$ -oxidation	Decrease	[138]
	PGC-1 $\alpha$			[138]
	LCAD			[137]
MCAD	[137]			
Glutamine metabolism	GLS1	Glutaminolysis	Increase	[150]

*c-Myc*

The c-Myc encoded by the Myc oncogene is over-expressed in 30%–50% of advanced breast cancers [151,152]. As a transcription factor controlling cell growth and metabolism, c-Myc plays an important role in tumorigenesis and drug resistance.

LDHA is the first glucose metabolism gene that is found directly regulated by c-Myc [153]. In addition, Zhang *et al.* have found that inhibiting LDHA expression can reversely elevate c-Myc mRNA level, indicating that LDHA has a negative feedback effect on the c-Myc expression [154]. Many other genes involved in glucose metabolism, such as GLUT1, HK2, GPI, GAPDH, PFK, ENO1, PGK, and PDK1, have been found to be activated by c-Myc (Table 3) [155,156].

In terms of glucose metabolism, complex interactions exist between c-Myc and HIF1. In hypoxia, HIF1 can inhibit the activity of c-Myc by stimulating the degradation of MYC and interrupting the complex of MYC–MAX [157,158]. However, intermittent hypoxia occurs all the time in tumor cells. Therefore, elevated c-Myc levels still work in tumor cells without the HIF1 inhibition of c-Myc [159]. Overall, HIF1 regulates many glucose metabolism genes under hypoxic conditions, whereas c-Myc elevates several genes under normal conditions [160]. For example, PDK1, which inhibits pyruvate oxidation in mitochondria under hypoxia, is elevated by HIF1 and c-Myc [161]. However, c-Myc transactivates glycolytic genes and several key genes involved in TCA. Therefore, the overall role of c-Myc in glucose metabolism remains to be investigated.

In addition, glutamine utilization is increased along with the Warburg effect [162]. A key function of c-Myc in cancers is the regulation of expression of genes involved in

the absorption and the metabolism of glutamine, such as GLS [163]. N-Myc also contributes to the conversion of glutamine to glutamate via transactivating the GLS2 expression directly in neuroblastoma cells [164]. Moreover, the lncRNA GLS–AS, which binds to and decreases GLS mRNA, is downregulated by c-Myc in pancreatic cancer with glucose and glutamine deprivation [165]. In breast cancer, c-Myc increases glutamine and glucose uptake by regulating the glutamine transporter alanine serine cysteine transporter 2 and excitatory amino acid transporters 2 for cell growth [94]. In the luminal B breast cancer subtype, c-Myc protects the cell from oxidative damage and maintains survival by regulating the glutamine–proline regulatory axis [166]. A recent study has identified that HER2 activation also stimulates the expression of GLS1 in breast cancer cells [167,168].

*SIX1*

SIX1, the most studied SIX family member, plays a role in the development of tumors, including breast cancer [173]. SIX1 is active in the sustained proliferative signaling by activating cyclin A and cyclin D [174,175]. The SIX1 overexpression is positively correlated with the malignant biological properties of tumors, including invasion and metastasis, evasion of growth suppressors, malignant transformation of nontumorigenic cells, and resistance of cell death [176–178].

SIX1 promotes breast cancer growth *in vitro* and *in vivo* by regulating aerobic glycolysis [179]. This study shows that the miR-548a-3p/SIX1 axis acts as an essential regulatory pathway in the Warburg effect. SIX1 can enhance aerobic glycolysis by upregulating the expression of almost all of glycolysis genes, including GLUT1, HK2, PFKL, ALDOA, GAPDH, PGK1, ENO1, pyruvate kinase M2 (PKM2), and LDHA. Mechanistically, SIX1 increases

**Table 3** c-Myc downstream targets that regulate metabolism

Metabolism	Genes	Functional category of genes	Role of c-Myc in metabolism	Reference
Glycometabolism	Glut1	Glucose uptake	Increase	[169]
	Glut2			[170]
	Glut4			[170]
	HK2	Glucose phosphorylation	Increase	[171]
	PGI	Glycolysis	Increase	[172]
	PFK1			[170]
	ALDOA			[170]
	PGK1			[170]
	ENO1			[170]
	PKM2			[171]
	LDHA			[171]
	PDK1	OXPHOS inhibition	Increase PDK1 expression	[170]
Lipid metabolism	FASN	Lipid synthesis	Increase	[170]
Glutamine metabolism	GLS1	Glutaminolysis	Increase	[171]
	ASCT2	Glutamine uptake	Increase	[171]

the glycolytic gene expression through histone acetyltransferases HBO1 and AIB1. miR-548a-3p can reduce the SIX1 expression, thus affecting tumor metabolism and growth.

### p53

p53 mutations are found in almost 30% of breast cancers and is highly associated with various breast cancer subtypes [180]. Women with p53 mutations have an 85% risk of developing breast cancer by age 60 years [181]. In addition to its traditional role as a tumor suppressor, p53 suppresses glycolysis and accelerates oxidative phosphorylation in glucose metabolism. In aerobic glycolysis, p53 limits glucose uptake by downregulating GLUT family genes (Table 4) [182,183]. p53 can compromise glycolysis by downregulating HK2 and PDK2 transcriptionally [142,184] and promoting PGM degradation [185]. Moreover, p53 accelerates the accumulation of intracellular lactate by downregulating the monocarboxylate transporter 1 (MCT1), leading to the shift from glycolysis to oxidative phosphorylation [186,187]. p53 prevents the active dimer formation of G6PD through binding, thus suppressing PPP and reducing glucose consumption and NADPH production and biosynthesis [188]. However, studies report that p53-inducible glycolysis and apoptosis regulator (TIGAR), one of p53 downstream genes, is overexpressed and promotes cell oxidative resistance by reducing the Warburg effect and promoting PPP in breast cancer cells [189,190]. Moreover, TIGAR may contribute in the enhancement of the mitochondrial functions of cancer cells [191]. The function of TIGAR on glycometabolism is paradoxical to p53, which is supposed to be a tumor suppressor gene in breast cancer. However, elevated TIGAR expression is dependent on tumor and not

dependent on p53 in breast cancer, and p53 can slightly regulate the TIGAR expression [192].

In addition, p53 contributes to the survival during serine starvation and oxidative stress. When serine is scarce, p53 blocks cell cycle and promotes remaining serine to join in glutathione synthesis [193]. Recently, the p53 family member p73 is reported to affect serine biosynthesis. p73 tends to promote the conversion of glutamine to glutamate by transcriptionally regulating GLS2, thus increasing the intracellular levels of serine and glycine. Therefore, the combined action of p73 and p53 maintains glutamine balance against the oxidative stress [194].

### Post-translational modifications of proteins (PTMs) involved in glucose, lipid, and amino acid metabolism

PTMs are the covalent bindings of functional molecules to proteins and play essential roles in regulating the activities and the functions of proteins involved in the malignant transformation of various cancer types. The common PTMs mainly include phosphorylation, acetylation, and ubiquitination. Previous research shows that PTMs are closely related to energy metabolism in breast cancer [197–199].

For instance, many rate-limiting enzymes involved in glucose metabolism, such as HK2, PFK1/2, PKM2, and LDHA, are all regulated by reversible phosphorylation (Table 5). The Tyr10 phosphorylation of LDHA facilitates the formation of its tetramers and enhances the LDHA activity [200]. By contrast, the Lys5 acetylation degrades LDHA via the HSC70 transport to lysosomes, thus inhibiting the LDHA activity [201]. A sharp increase in ROS concentration inhibits PKM2 through the oxidation of Cys358 [202]. For lipid metabolism, PPAR $\gamma$  is an essential regulator of adipogenesis. Mitogen-activated

**Table 4** p53 downstream targets that regulate metabolism

Metabolism	Genes	Functional category of genes	Role of p53 in metabolism	Reference
Glycometabolism	GLUT4	Glucose uptake	Decrease	[43]
	PGM1	Glycolysis	Decrease	[43]
	TIGAR	Decrease glycolysis and promote PPP	Increase TIGAR expression	[195]
	SCO2, Acad11	OXPPOS	Increase	[195]
	HK2	Glucose phosphorylation	Decrease	[43]
	G6PD	PPP	Decrease	[196]
Lipid metabolism	Caveolin1	Lipid homeostasis and endocytosis	Decrease	[196]
	SREBP1	Lipid synthesis	Decrease	[195]
	DHR53, Lipin1, MCD	Lipid accumulation	Increase	[196]
	AMPK	Promote FA $\beta$ -Oxidation and inhibit lipid synthesis	Increase AMPK expression	[196]
Glutamine metabolism	GLS2	Glutaminolysis	Increase	[195]

protein kinase-mediated phosphorylation at Ser112 inhibits the PPAR $\gamma$  function [203]. SUMOylation and ubiquitination can decrease the stabilization and the activity of PPAR $\gamma$  [204,205]. Although the deacetylation of PPAR $\gamma$  may induce the browning of white adipose tissue, complex and unknown regulatory mechanisms between acetylation and PPAR $\gamma$  function [206]. SREBP, another essential transcriptional regulator of lipid metabolism, is degraded by phosphorylation-dependent ubiquitination [207]. In glutamine catabolism, the phosphorylation at the Ser95 of GLS decreases its activity in breast cancer cells [208]. However, the Ser314 phosphorylation of GLS has the opposite effect, indicating that phosphorylation can enhance the GLS activity [209]. These contradictory phenomena show that the same PTM at different sites may have different functions.

### Targeting abnormal metabolism in the treatment of breast cancer

In recent years, numerous and comprehensive research have been conducted on the mechanisms of abnormal metabolism in breast cancer. At the same time, various

targeted drugs for metabolism have been developed.

For instance, obese women have higher incidence and mortality rates of breast cancer compared with nonobese women. The overactivation of insulin-like growth factor-1 (IGF1) system plays a vital role in carcinogenesis in obese women [228]. MEDI-573, a monoclonal antibody (mAb) blocking the binding of IGF1 and IGF1R, has shown excellent anticancer activity and tolerability in a phase I clinical trial in patients with breast cancer [229]. AMPK, a key protein kinase for maintaining metabolic homeostasis, is activated and sustains cell survival in the case of glucose depletion. However, the overactivated AMPK promotes cell apoptosis instead [230]. Several clinical drugs, such as metformin, demethoxycurcumin, and fluoxetine, are thought to overactivate the AMPK pathway to inhibit breast cancer cells [231]. Over the last decade, several different FASN inhibitors have been developed. First-generation FASN inhibitors are not applicable in clinical practice because of critical defects, such as poor cell permeability and severe weight loss in mice [232]. TVB-2640 is the first clinically available new-generation FASN inhibitor and needs to be further explored in the treatment of breast cancer. Glutamylcyclotransferase (GGCT), one of

**Table 5** Post-translational modifications of proteins involved in metabolism

Proteins	Modification	Site	Functional category	Reference
HK2	Phosphorylation	Thr473	Enhancing activity	[210]
PFK1	Oxidation	Ser529	Decreasing activity	[211]
PFK2	Phosphorylation	Ser466, Ser483	Enhancing activity	[212]
PGAM1	Phosphorylation	His11, Tyr26	Enhancing activity	[213]
	Acetylation	Lys251, Lys253, Lys254	Enhancing activity	[214]
PKM2	Phosphorylation	Ser37, Tyr105	Enhancing activity	[215,216]
	Acetylation	Lys305, Lys433	Degradation	[217]
	Oxidation	Cys358	Decreasing activity	[202]
PDP1	Phosphorylation	Tyr381	Enhancing activity	[218]
	Acetylation	Lys202	Decreasing activity	[218]
LDHA	Phosphorylation	Tyr10, Tyr 83	Enhancing activity	[200,219]
	Acetylation	Lys5	Degradation	[201]
PDK1	Phosphorylation	Tyr243, Tyr244	Enhancing activity	[220]
PDHA1	Phosphorylation	Ser293, Tyr301	Decreasing activity	[221,222]
	Acetylation	Lys321	Decreasing activity	[218]
p53	Phosphorylation	Ser15	Stabilization	[223]
	Ubiquitylation	Lys237, Lys338	Degradation	[20]
	Acetylation	Lys	Stabilization	[224]
HIF1 $\alpha$	Ubiquitylation	Lys709, Lys532	Degradation	[225]
PPAR $\gamma$	Phosphorylation	Serine112	Decreasing activity	[203]
	SUMOylation	Lys63, Lys94, Lys98, Lys107	Decreasing activity	[195]
	Acetylation	Lys268, Lys293	Decreasing activity	[206]
	Ubiquitylation	Lys184, Lys185	Degradation	[204,205]
SREBP1	Phosphorylation	Thr402, Thr426	Degradation	[207]
	Acetylation	Lys324, Lys333	Stabilization	[207,226]
GLS	Phosphorylation	Ser95	Decreasing activity	[208]
	Phosphorylation	Ser314	Stabilization	[209]
	Acetylation	Lys320	Decreasing activity	[227]

the main catalytic enzymes in glutathione metabolism, contributes to cell proliferation, invasion, and migration of breast cancer [233]. Pro-N-glutaryl-L-alanine (pro-GA), the first cell membrane-permeable GGCT inhibitor, has evident inhibitory effects on the proliferation of breast and other cancer cells. Moreover, the anticancer effect and the favorable tolerability of pro-GA *in vivo* have been demonstrated [234]. Folic acid metabolism plays a key role in nucleotide synthesis, whose fluxes are elevated in breast cancer cells. Pemetrexed disodium is an anticancer drug that targets thymidylate synthase and several folate-dependent enzymes. Pemetrexed has remarkable effects on the clinical treatment of breast cancer [235]. In addition to the drugs mentioned above, a number of anticancer drugs targeting normal metabolism are being developed. However, the effectiveness and the adverse side effects of these drugs deserve further exploration and evaluation.

## Breast cancer and immune therapy

Immune evasion is an emerging hallmark of cancer. In 1909, Ehrlich has put forward the notion of “immune surveillance” and brought the cancer researchers’ attention to the connection between cancer and the host’s immune response. In 1970, Burnet has refined the concept and suggested that malignant genetic mutations occur constantly in the body and that the host immune system eliminates these cells with dangerous mutants all the time [236]. Gradually, “immune surveillance” has evolved into a theory termed “immunoediting,” which can be divided into three phases, namely, elimination, equilibrium, and escape [237]. At present, the most in-depth research is the “Escape” phase. In the “Escape” phase, cancer cells have established an immunosuppressive tumor microenvironment and proliferate rapidly [238]. In the tumor microenvironment, poor cellular immunogenicity, lymphocyte infiltration, and immunosuppression are considered the reasons for the low efficacy of breast cancer immunotherapy. Thus, scientists have found a couple of potential directions for breast cancer treatment, which will be introduced below.

### Cytotoxic T-lymphocyte-associated antigen 4 (CTLA-4) in breast cancer

The T cell activation plays an important role in tumor immunity. The proper activation of T cells requires antigens and costimulatory signals. The CD28/B7 family, known as “immune checkpoints,” is a main part of costimulatory signals [239,240]. T cells are activated if the B7 on antigen-presenting cells (APCs) binds to the CD28 on the T cell. However, T cells sometimes need to be properly inactivated to prevent excessive autoimmunity. The CTLA-4 on the T cell surface has been termed a

negative regulator of naive T cell activation. Considering that the affinity of B7 binding to CTLA-4 is greater than that to CD28, B7 preferentially interacts with CTLA-4, resulting in an inhibitory signal to the T cell nucleus [241].

Aside from the negative costimulation signals to T cells, regulatory T (Treg) cell-mediated immunosuppressive activity is promoted by CTLA-4 [242]. Interestingly, the expression of CTLA-4 is found in cancer cells. The presence of cytoplasmic CTLA-4 may represent the poor prognosis of breast cancers [243]. Another study has found that the secretion of an alternatively spliced soluble CTLA-4 isoform can be increased during the healthy human T cell immune responses, and this isoform has potent inhibitory ability on T cell proliferative responses. This soluble CTLA-4 isoform is derived from Treg cells [244].

The anti-CTLA-4 mAb ipilimumab has been approved by FDA for advanced melanoma treatment. Ipilimumab inhibits the CTLA-4 signaling via the enhancement of T cell response and mediates the antibody-dependent cytotoxicity reaction [245]. Ipilimumab and tremelimumab (another anti-CTLA-4 mAb) are clinically evaluated in other solid tumors, including breast cancer with limited symptomatic effects [246,247].

### Programmed cell death (PD)-1 in breast cancer

CTLA-4 suppresses T cell responses in the initiation of T cell activation process, and PD-1 attenuates T cell activity in the later process [248]. PD-1, an immunosuppressive molecule, is expressed on the T cell surface, which then binds to the PD ligand 1 (PD-L1) on the tumor tissue, resulting in T cell inactivation [249,250]. PD-1 is thought to interact with peripheral tissues directly, and the inhibition of this process can also promote antitumor immunity [251,252]. Compared with normal breast samples, the expression of PD-L1 is upregulated in 20% of clinical samples and 38% of basal tumor and has positive correlation with poor prognosis [253].

The expression levels of PD-1 and PD-L1 are upregulated by certain cytokines, including interferon (IFN)  $\gamma$  and interleukin 4, through the activation of IFN/signal transducer and activator of transcription (STAT) pathway [254–256]. Tumor cells can induce the expression of PD-L1 directly through constitutive oncogenic pathways or indirectly with the help of T cells [257]. This finding explains in part the phenomenon that PD-L1 expression level has linear correlation with inflammatory genes, including IFN $\gamma$  in breast cancer [258]. Moreover, PD-L1 is overexpressed in breast cancers with treatment of some antitumor drugs, such as etoposide, paclitaxel, and 5-fluorouracil [259], suggesting that chemotherapy resistance may involve cancer immunity. Doxorubicin has the opposite effect (PD-L1 expression declines).

PD-1 and PD-L1 are regarded as vital targets of tumor

immunotherapy. Pembrolizumab is a mAb against PD-1. Several clinical trials have suggested that pembrolizumab has certain anticancer activity in patients with early and PD-L1-positive TNBC [260]. Moreover, pembrolizumab is well tolerated in patients with breast cancer, and its toxicities are similar to those in other disease cohorts [259]. The combination of nivolumab (another anti-PD-1 mAb) and ipilimumab (anti-CTLA-4 mAb) has been demonstrated to have considerable antitumor effects on melanoma and needs further evaluation in the clinical therapy of breast cancer [261]. Atezolizumab is a mAb against PD-L1 and the first immune checkpoint inhibitor approved by FDA for breast cancer. The combination of atezolizumab with paclitaxel has been approved by FDA for PD-L1-positive advanced or metastatic TNBC. In a phase III study, this combination therapy improves the progression and the prognosis for patients with TNBC [262].

### Lymphocytic infiltration in breast cancer

Massive lymphocyte infiltration is an important characteristic of breast cancer. A growing body of literature has demonstrated that the infiltration of leukocytes into the neoplastic stroma is enhanced, functionally contributing to the progression of most solid tumors, including breast cancer [263].

In general, tumor-infiltrating lymphocytes (TILs) are composed of T cells and a minority of NK or B cells. B cells only represent predominant lymphocytes by secreting immunoglobulins during early breast cancer progression [6]. However, CD8<sup>+</sup> T cells are generally in a state of inactivation in breast tumors and activated in one-third of the patients after chemotherapy [264].

The mechanisms of TILs in the clinical oncology of breast tumors are a matter of debate. For example, one study suggests that a high percentage of CD4<sup>+</sup> T cells implies the development of metastases in breast cancers [265]. However, other studies have the opposite argument that lymphocyte infiltration presents a favorable prognosis in breast cancer [266,267]. For example, Aaltomaa *et al.* have studied the predictive value of TILs in 489 patients with breast cancer followed for more than 10 years and found that the presence of TILs are correlated with low malignancy of tumors, showing efficient immune defense mechanisms [268]. Moreover, the high level of stromal TILs is a favorable factor in the chemotherapy response in TNBC [269,270]. However, the assessment of TILs still lacks sufficient standardization in the clinical treatments of breast cancer.

TILs may enhance the antitumor effect of chemotherapy with improved clinical response [271]. Interestingly, the level of TILs may increase from low to high after chemotherapy in patients with TNBC [272,273]. In patients with TNBC, tumors with high TILs after

chemotherapy have a lower risk of recurrence than those with low TIL levels [274,275]. Overall, in TNBCs, an activated immune microenvironment with high TILs is positively correlated with improved effectiveness of chemotherapy.

### Vaccine-based therapies for breast cancer

Vaccine-based therapies are effective immunotherapies used to build antitumor immune system by submitting tumor-associated antigens (TAAs, Fig. 4). In the vaccine-based therapeutic process of breast cancer, the most striking example is HER-2 applied in several types of breast cancer vaccines [276].

#### *Autologous cell-based vaccines*

Early autologous cell-based vaccines submit almost all tumor antigens through the use of whole autologous tumor cells or tumor cell lysates indiscriminately [277]. Scientists also use genes encoding costimulatory signals in combination with the vaccine to achieve T cell activation [278]. However, considering that T cells may preferentially process other antigens instead of TAAs, autologous cell-based vaccines are less effective than vaccines presenting specific antigens [279]. This type of vaccine requires to generate individualised vaccines for each patient, which is not a convenient method. Most of all, autologous cell-based vaccines contain normal somatic cell antigens that may induce an autoimmune response [280]. Lapuleucel-T, an autologous cell-based vaccine, has antigen constructs that consist of HER2 protein sequences. The vaccine therapy is well tolerated with no major adverse effect in the phase I clinical trial in breast cancer. This study suggests that autologous cell-based vaccines are feasible and opens an avenue to further investigation in tumor immunotherapy [281].

#### *Dendritic cell (DC)-based vaccines*

DCs are efficient APCs that can activate the host immune system, making them an ideal vehicle for tumor vaccines [282]. Most of DC vaccines are made by generating DCs, loading TAAs, or transfecting associated genes [283]. Although DC vaccines have many advantages, several main challenges associated with *ex vivo* DC vaccine preparation have limited development, such as lacking a good manufacturing practice facility and a relatively simple process.

However, a large number of DC vaccines are used in solid tumor with inconsistent results [284–286]. In animal studies, scientists have injected DCs with a nonsignaling neu oncogene (i.e., HER-2) into mice with the overexpression of HER2. This result shows that compared with

all mice in the control groups, only 35% of vaccinated mice have developed breast tumors after 28 weeks [287].

### Peptide-based vaccines

Peptide vaccines are divided into single- and long-peptide vaccines. Single-peptide vaccines play a role in cellular immunity via the major histocompatibility complex class I (MHC I). However, the vaccine is only effective for certain patients because of the MHC I restriction [280]. Besides, the immune response activated by single-peptide vaccines may be short lasting and easy to tolerate [288]. Peptide vaccines are generally used with adjuvants or designed as DC vaccines to defeat these drawbacks.

The long-peptide vaccines, which elicit intense immune reactions and MHC II-restricted T cell activation, are being investigated. Protein vaccines containing whole HER2 protein have appeared. These vaccines contain MHC I and MHC II epitopes and activate most CD4<sup>+</sup> T cells and relatively few CD8<sup>+</sup> T cells in patients with breast cancer [289].

### DNA-based vaccines

DNA-based vaccines are typically provided as plasmids either with viral vectors or naked. Once these vaccines are injected, plasmids are integrated to APCs for protein

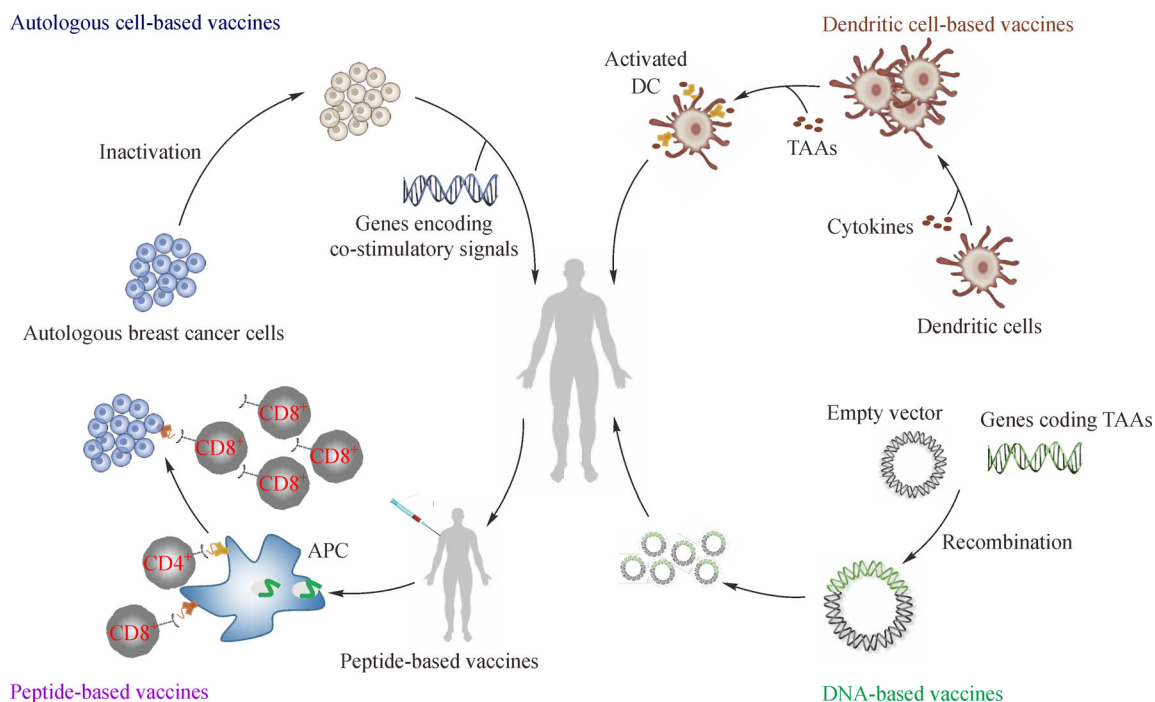
translation and submission to immune cells. Hence, DNA-based vaccines can overcome weak immunogen and tolerance, which occur when peptide or cell-based vaccines are used. Vaccinia and other pox viruses are the most appropriate viral vectors because they have enough size to accommodate numerous genes coding TAAs and costimulatory molecules [290,291]. Although DNA vaccines are easy and inexpensive to construct, their performance is unsatisfactory. This finding may be because of the difficulty in expressing enough exogenous genes to activate effective immune responses in APCs [292].

HER2 DNA vaccines are used in clinical trial without serious adverse toxicity in patients with breast cancer after therapy. This result shows that these HER2 DNA vaccines are safe and effective to activate long-lasting immune responses in patients with breast cancer [293].

## Role of cancer stem cells (CSCs) in metabolism and immunity

### CSCs and metabolism

CSCs may represent an important mechanism of tumor recurrence and metastasis. Two main viewpoints exist on the glucose metabolism of CSCs. On the one hand, many studies suggest that the glycolytic switch plays a critical role in CSCs. CSCs are more dependent on the Warburg



**Fig. 4** Vaccine-based therapies for breast cancer. The autologous cell-based vaccines uses the whole autologous tumor cells, which can submit almost all tumor antigens. Dendritic cell-based vaccines are finished following DC generation, TAA loading, or associated gene transfection. Peptide-based vaccines contain MHC I and MHC II epitopes and activate most CD4<sup>+</sup> T cells and relatively few CD8<sup>+</sup> T cells. DNA-based vaccines are usually delivered in the form of plasmids. Abbreviations: TAAs, tumor-associated antigens; APC, antigen-presenting cells.



effect than normal cancer cells [294]. CD44, a marker of CSCs, enhances the glycolytic phenotype by interacting with PKM2 in breast cancer [295,296]. In turn, glucose increases the population of CSCs by inhibiting the ATP-mediated AMPK pathway suppression and activating the Akt pathway [297]. On the other hand, several lines of evidence demonstrate that quiescent CSCs rely heavily on mitochondrial respiration rather than glycolysis [298,299]. In TNBC, oxidative phosphorylation may confer CSC resistance to chemotherapy, which is regulated by MYC and MCL1 [300].

CSCs also have a reliance on glutamine- and lipid-associated pathways in addition to glucose metabolism. High lipid droplets are observed in colorectal CSCs and BCSCs and confer CSCs with high tumorigenic potential [301]. In addition, blocking FAO resensitizes breast cancers to chemotherapy by decreasing BCSCs, suggesting that FAO is an important mechanism for CSC maintenance and chemotherapy resistance in breast cancer [302].

### CSCs and immunity

Besides the alteration of tumor microenvironment, the antitumor immunity is suppressed by CSCs. Glioblastoma multiforme (GBM) is a rapidly growing malignant brain tumor, and its CSCs are the classic models for the research of CSCs. GBM CSCs can modulate the immune cells in the tumor microenvironment to support the malignant phenotype of the tumor. For instance, GBM CSCs mediate the recruitment of TAMs and the suppression of T cell activation during chemotherapy [303]. Notably, TAMs can directly enhance the tumor-initiating capacity of CSCs by activating the transcription factor STAT3 [304].

CSCs avoid immune-mediated rejection *in vivo* by reducing immunogenicity. CSCs are found to express less MHC-I, MHC-II, and natural killer group 2 member D ligand molecules compared with normal stem cells [305,306]. In addition, CSCs express PD-L1 instead of the costimulatory molecules [307]. Moreover, PD-L1 can raise the expression of embryonic stem cell factors in BCSCs by activating the PI3K/AKT pathway. The decreased expression of PD-L1 impairs the ability of BCSCs to self-renewal *in vitro* and *in vivo* [308].

## Interplay between metabolism and immunity in cancer

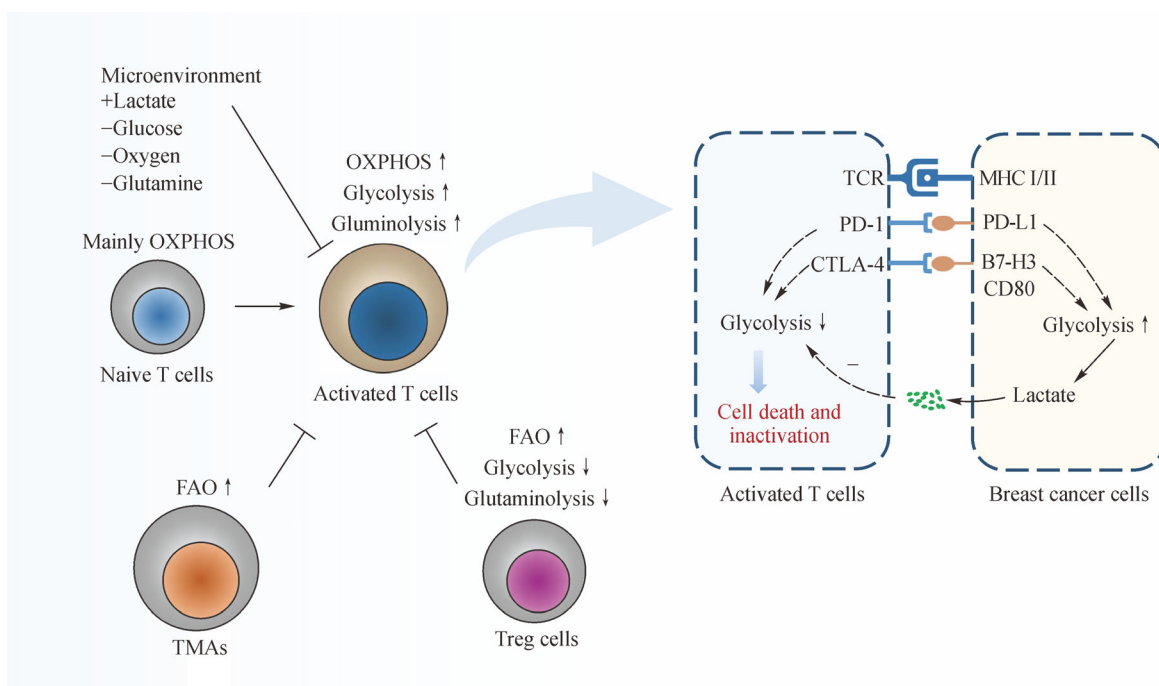
### The metabolic microenvironment suppresses tumor immunity

Recent studies reveal that the dysfunctional immunity is closely associated with abnormal metabolism in various cancer types (Fig. 5). The abnormal metabolism of cancer

cells creates an extreme environment characterized by acidity, hypoxia, and immunosuppressive metabolites. In this abnormal metabolic microenvironment, immune cells are deprived of nutrients and undergo metabolic changes that influence their activation.

Macrophages play a crucial role in cancer progression. Under the influence of inflammatory tumor microenvironment, the phenotype of macrophages varies from M1 (antitumor phenotype) to M2 (promoting tumor phenotype) [309,310]. The M1 phenotype is characterized by microbicidal functions by producing inflammatory cytokines and reactive oxygen intermediates. By contrast, the M2 phenotype is characterized by immunosuppression and tissue remodeling by producing anti-inflammatory cytokines. In metabolism, M1 maintains energy metabolism through anaerobic glycolysis, PPP, and FA biosynthesis, whereas M2 relies on OXPHOS [311]. Most of tumor-associated macrophages (TAMs) are generally regarded as the M2 phenotype. Macrophages are sensitive to changes in oxygen supply. M2 macrophages are concentrated in hypoxic tumor areas, and M1 macrophages are concentrated in normoxic areas. Mechanistically, hypoxia recruits TAMs in the hypoxia region by triggering the phosphorylation of the vascular endothelial growth factor (VEGF) receptor [312]. HIF1 is overexpressed and essential to regulate glycolysis in macrophages to support their phenotype and function in hypoxic areas [313,314]. In addition, lactic acid plays a critical role in inducing macrophages to transform into TAMs [315]. In turn, hypoxic TAMs express HIF1 and secrete proteolytic enzymes, thus promoting cell proliferation and metastasis [316]. The arginase 1 expressed by lactate-induced macrophages can promote tumor growth. Furthermore, the accumulation of lactate can decrease the production of type I IFN to suppress tumor-associated immunity [317].

Besides macrophages, T cells also play vital roles in the host immune response to cancer cells. Naive T cells ingest small amounts of glucose and utilize OXPHOS to meet their energy needs, whereas effector T cells upregulate glycolysis and glutaminolysis to support rapid proliferation and function [309]. The glycolysis enzyme GAPDH binds to AU-rich elements in the 3' UTRs of IFN $\gamma$  and inhibits its expression. The increase in the Warburg effect can eliminate the GAPDH function of inhibiting translation [318]. AMPK, which is activated by the increased AMP/ATP ratio in the absence of nutrients, also suppresses the IFN $\gamma$  mRNA translation [319]. The high metabolism of tumor cells and the poor vascular system within tumors lead to the deficiency of nutrients in the microenvironment. This microenvironment prevents T cells from increasing glycolysis and impairs TCR signaling, thus suppressing their function. However, Treg cells gain energy through FAO rather than glycolysis, whose characteristic helps Treg cells survive and exert their immunosuppressive effect on abnormal metabolic microenvironment [320]. In



**Fig. 5** Interplay between metabolism and immunity in cancer. On the one hand, abnormal metabolism in cancer cells creates a tumor microenvironment characterized by hypoxia, nutrient depletion, and acidic pH. This microenvironment can prevent T cells from increasing glycolysis and impair TCR signaling, thus suppressing their function. However, TAMs and Treg cells gain energy through fatty acid oxidation rather than glycolysis, whose characteristic helps them survive and exert their immunosuppressive effect. On the other hand, PD-1 and CTLA-4 can inhibit glycolysis in T cells, thus promoting cell death and inactivation. Furthermore, the expression levels of B7-H3 and PD-L1 promote glucose uptake, glucose utilization, and lactate production in breast cancer cells. Abbreviations: OXPHOS, oxidative phosphorylation; FAO, fatty acid oxidation; TCR, T cell receptor; MHC, major histocompatibility complex class; PD-1, programmed cell death 1; PD-L1, programmed cell death ligand 1; CTLA-4, cytotoxic T-lymphocyte-associated antigen 4.

addition, the accumulation of metabolites, such as lactic acid and amino acid metabolites, contributes to inhibiting T cell activation and promoting Treg cells [321]. Furthermore, HIF1 $\alpha$  can induce the proliferation of Treg cells and PD-L1-overexpressing cancer cells [322].

### The immune system adjusts T cell and cancer cell metabolism

Aside from directly killing cancer cells, the effect of immune system on the abnormal metabolism of cancer cells is emerging. The CD28/B7 family plays an important role in regulating tumor and T cell metabolism.

CD28 plays a key role in increasing glucose uptake and glycolysis via the PI3K/AKT serine/threonine kinase (AKT) signaling pathways, allowing T cells to sustain active response [323]. Recent studies demonstrate that the PD-1 signaling pathway is involved in the FAO in T cells [324]. In response to PD-1 signals, T cells utilize increased FAO to generate the energy required for activation instead of glycolysis, glutaminolysis, or another metabolism. PD-1 promotes FAO and lipolysis by increasing the expression of CPT1A and ATGL. CTLA-4 can inhibit glycolysis without augmenting FAO [324]. Antibodies against PD-1

or CTLA-4 can restore the glucose concentration in the tumor microenvironment, which promotes T cell glycolysis and immune factor production [325]. However, this phenomenon still cannot be fully explained by molecular mechanisms.

The function of PD-L1 in breast cancer also needs to be further explored. The depletion of PD-L1 can reduce the glycolysis rate by decreasing the mTOR activity and the glycolytic enzyme expression, suggesting that PD-L1 may play a crucial role in the glucose utilization in cancer cells [325,326]. Moreover, the overexpressed B7-H3 promotes glucose uptake and lactate production in breast cancer. One of the mechanisms may be that B7-H3 can upregulate the levels of HIF-1 $\alpha$  and its target genes, namely, LDHA and PDK1 [327].

### Conclusions and prospects

In conclusion, recent breakthroughs have tremendously refreshed our understanding of the interaction between reprogramming metabolism and the antitumor immune system during breast cancer development. Although the abnormal metabolism and immunity of cancer has emerged

as two revolutionary strategies in breast cancer, most of the related pathways between them remain unknown.

In the aspect of metabolism, breast cancer cells have a high level of energy metabolism. Breast cancer cells enhance the Warburg effect to produce energy and lactate for sustaining proliferation and tumor microenvironment. Breast cancer cells also utilize lipid metabolism and other glucose metabolism, such as TCA and PPP, to gain vital compounds for sustaining the organism. Glutamine is also elevated and protects cells from ROS elevation and apoptosis in breast cancer cells. As for immune changes associated with breast cancer, CTLA4, PD-1/PD-L1, and TILs have been studied deeply, and novel and effective clinical treatments have been developed for patients with breast cancer. In addition, BCSCs have distinctive metabolism and immune response compared with breast cancer cells. In general, the unique tumor microenvironment caused by abnormal metabolism suppresses the antitumor immunity. The effect of immunity on metabolism is still largely unknown but is becoming the hot spot.

With the gradual research of immunotherapy and metabolic therapy, the next generation of anticancer drugs should obtain the dual effect of remodeling tumor metabolism and activating host immunity [328]. For example, metformin possesses multiple mechanisms of restraining breast cancer [329,330]. Metformin promotes the HIF1 $\alpha$  degradation by increasing the cellular oxygen content, thus inhibiting cancer cell growth [331]. Furthermore, metformin maintains the activity of antitumor immunity by inhibiting PD-L1 expression in endometrial and breast cancers. This phenomenon is dependent on the mechanism that activated AMPK by metformin directly phosphorylates PD-L1. The phosphorylation of PD-L1 leads to its glycosylation and subsequent degradation through the endoplasmic reticulum-associated protein degradation pathway [332,333]. However, the actual clinical effect is not as effective as the expected theoretical mechanism. The treatment of breast cancer still lacks an ideal and more effective drug than metformin.

Overall, metabolism and immunity share certain oncogenes, signal pathways, tumor microenvironment, important related functions, and further elucidation is needed.

## Compliance with ethics guidelines

Deyu Zhang, Xiaojie Xu, and Qinong Ye declare that they have no conflict of interest. This manuscript is a review article and does not involve a research protocol requiring approval by the relevant institutional review board or ethics committee.

## References

- Li H, Zheng RS, Zhang SW, Zeng HM, Sun KX, Xia CF, Yang ZX, Chen WQ, He J. Incidence and mortality of female breast cancer in China, 2014. *Chin J Oncol (Zhonghua Zhong Liu Za Zhi)* 2018; 40(3): 166–171 (in Chinese)
- Stienstra R, Netea-Maier RT, Riksen NP, Joosten LAB, Netea MG. Specific and complex reprogramming of cellular metabolism in myeloid cells during innate immune responses. *Cell Metab* 2017; 26(1): 142–156
- Kishton RJ, Sukumar M, Restifo NP. Metabolic regulation of T cell longevity and function in tumor immunotherapy. *Cell Metab* 2017; 26(1): 94–109
- El Ansari R, McIntyre A, Craze ML, Ellis IO, Rakha EA, Green AR. Altered glutamine metabolism in breast cancer; subtype dependencies and alternative adaptations. *Histopathology* 2018; 72(2): 183–190
- Cappelletti V, Iorio E, Miodini P, Silvestri M, Dugo M, Daidone MG. Metabolic footprints and molecular subtypes in breast cancer. *Dis Markers* 2017; 2017: 7687851
- Cancer Genome Atlas Network. Comprehensive molecular portraits of human breast tumours. *Nature* 2012; 490(7418): 61–70
- Holm K, Hegardt C, Staaf J, Vallon-Christersson J, Jönsson G, Olsson H, Borg A, Ringnér M. Molecular subtypes of breast cancer are associated with characteristic DNA methylation patterns. *Breast Cancer Res* 2010; 12(3): R36
- Yersal O, Barutca S. Biological subtypes of breast cancer: prognostic and therapeutic implications. *World J Clin Oncol* 2014; 5(3): 412–424
- Witton CJ, Reeves JR, Going JJ, Cooke TG, Bartlett JM. Expression of the HER1–4 family of receptor tyrosine kinases in breast cancer. *J Pathol* 2003; 200(3): 290–297
- Cheang MC, Chia SK, Voduc D, Gao D, Leung S, Snider J, Watson M, Davies S, Bernard PS, Parker JS, Perou CM, Ellis MJ, Nielsen TO. Ki67 index, HER2 status, and prognosis of patients with luminal B breast cancer. *J Natl Cancer Inst* 2009; 101(10): 736–750
- Roberts SA, Lawrence MS, Klimczak LJ, Grimm SA, Fargo D, Stojanov P, Kiezun A, Kryukov GV, Carter SL, Saksena G, Harris S, Shah RR, Resnick MA, Getz G, Gordenin DA. An APOBEC cytidine deaminase mutagenesis pattern is widespread in human cancers. *Nat Genet* 2013; 45(9): 970–976
- Cheng YC, Rondón G, Anderlini P, Khouri IF, Champlin RE, Ueno NT. Paclitaxel and trastuzumab as maintenance therapy in patients with HER2-positive metastatic breast cancer who underwent high-dose chemotherapy and autologous hematopoietic stem cell transplantation. *J Cancer* 2013; 4(8): 679–685
- Duru N, Candas D, Jiang G, Li JJ. Breast cancer adaptive resistance: HER2 and cancer stem cell repopulation in a heterogeneous tumor society. *J Cancer Res Clin Oncol* 2014; 140(1): 1–14
- Malik F, Korkaya H, Clouthier SG, Wicha MS. Lin28 and HER2: two stem cell regulators conspire to drive aggressive breast cancer. *Cell Cycle* 2012; 11(15): 2780–2781
- Korkaya H, Wicha MS. HER2 and breast cancer stem cells: more than meets the eye. *Cancer Res* 2013; 73(12): 3489–3493
- Russnes HG, Lingjærde OC, Børresen-Dale AL, Caldas C. Breast cancer molecular stratification: from intrinsic subtypes to integrative clusters. *Am J Pathol* 2017; 187(10): 2152–2162
- Prat A, Cruz C, Hoadley KA, Diez O, Perou CM, Balmaña J. Molecular features of the basal-like breast cancer subtype based on BRCA1 mutation status. *Breast Cancer Res Treat* 2014; 147(1):

- 185–191
18. Kim SH, Choi SI, Won KY, Lim SJ. Distinctive interrelation of p53 with SCO2, COX, and TIGAR in human gastric cancer. *Pathol Res Pract* 2016; 212(10): 904–910
  19. Matoba S, Kang JG, Patino WD, Wragg A, Boehm M, Gavrilova O, Hurley PJ, Bunz F, Hwang PM. p53 regulates mitochondrial respiration. *Science* 2006; 312(5780): 1650–1653
  20. Bensaad K, Tsuruta A, Selak MA, Vidal MN, Nakano K, Bartrons R, Gottlieb E, Vousden KH. TIGAR, a p53-inducible regulator of glycolysis and apoptosis. *Cell* 2006; 126(1): 107–120
  21. Elstrom RL, Bauer DE, Buzzai M, Karnauskas R, Harris MH, Plas DR, Zhuang H, Cinalli RM, Alavi A, Rudin CM, Thompson CB. Akt stimulates aerobic glycolysis in cancer cells. *Cancer Res* 2004; 64(11): 3892–3899
  22. Xu J, Chen Y, Olopade OI. MYC and breast cancer. *Genes Cancer* 2010; 1(6): 629–640
  23. Wise DR, DeBerardinis RJ, Mancuso A, Sayed N, Zhang XY, Pfeiffer HK, Nissim I, Daikhin E, Yudkoff M, McMahon SB, Thompson CB. Myc regulates a transcriptional program that stimulates mitochondrial glutaminolysis and leads to glutamine addiction. *Proc Natl Acad Sci USA* 2008; 105(48): 18782–18787
  24. Gao P, Tchemyshyov I, Chang TC, Lee YS, Kita K, Ochi T, Zeller KI, De Marzo AM, Van Eyk JE, Mendell JT, Dang CV. c-Myc suppression of miR-23a/b enhances mitochondrial glutaminase expression and glutamine metabolism. *Nature* 2009; 458(7239): 762–765
  25. Lim SO, Li CW, Xia W, Lee HH, Chang SS, Shen J, Hsu JL, Raftery D, Djukovic D, Gu H, Chang WC, Wang HL, Chen ML, Huo L, Chen CH, Wu Y, Sahin A, Hanash SM, Hortobagyi GN, Hung MC. EGFR signaling enhances aerobic glycolysis in triple-negative breast cancer cells to promote tumor growth and immune escape. *Cancer Res* 2016; 76(5): 1284–1296
  26. Kanaan YM, Sampey BP, Beyene D, Esnakula AK, Naab TJ, Ricks-Santi LJ, Dasi S, Day A, Blackman KW, Frederick W, Copeland RL Sr, Gabrielson E, Dewitty RL Jr. Metabolic profile of triple-negative breast cancer in African-American women reveals potential biomarkers of aggressive disease. *Cancer Genomics Proteomics* 2014; 11(6): 279–294
  27. Kim S, Kim DH, Jung WH, Koo JS. Expression of glutamine metabolism-related proteins according to molecular subtype of breast cancer. *Endocr Relat Cancer* 2013; 20(3): 339–348
  28. Cao MD, Lamichhane S, Lundgren S, Bofin A, Fjøsne H, Giskeødegård GF, Bathen TF. Metabolic characterization of triple negative breast cancer. *BMC Cancer* 2014; 14(1): 941
  29. McGuiirk S, Gravel SP, Deblois G, Papadopoli DJ, Faubert B, Wegner A, Hiller K, Avizonis D, Akavia UD, Jones RG, Giguère V, St-Pierre J. PGC-1 $\alpha$  supports glutamine metabolism in breast cancer. *Cancer Metab* 2013; 1(1): 22
  30. Monaco ME. Fatty acid metabolism in breast cancer subtypes. *Oncotarget* 2017; 8(17): 29487–29500
  31. Rhodes DR, Yu J, Shanker K, Deshpande N, Varambally R, Ghosh D, Barrette T, Pandey A, Chinnaiyan AM. ONCOMINE: a cancer microarray database and integrated data-mining platform. *Neoplasia* 2004; 6(1): 1–6
  32. Camarda R, Zhou AY, Kohnz RA, Balakrishnan S, Mahieu C, Anderton B, Eyob H, Kajimura S, Tward A, Krings G, Nomura DK, Goga A. Inhibition of fatty acid oxidation as a therapy for MYC-overexpressing triple-negative breast cancer. *Nat Med* 2016; 22(4): 427–432
  33. Pavlova NN, Thompson CB. The emerging hallmarks of cancer metabolism. *Cell Metab* 2016; 23(1): 27–47
  34. Benjamin DI, Cravatt BF, Nomura DK. Global profiling strategies for mapping dysregulated metabolic pathways in cancer. *Cell Metab* 2012; 16(5): 565–577
  35. Islam RA, Hossain S, Chowdhury EH. Potential therapeutic targets in energy metabolism pathways of breast cancer. *Curr Cancer Drug Targets* 2017; 17(8): 707–721
  36. Jin L, Zhou Y. Crucial role of the pentose phosphate pathway in malignant tumors. *Oncol Lett* 2019; 17(5): 4213–4221
  37. Wang Z, Dong C. Gluconeogenesis in cancer: function and regulation of PEPCK, FBPase, and G6Pase. *Trends Cancer* 2019; 5(1): 30–45
  38. Brovkovich V, Aldrich A, Li N, Atilla-Gokcumen GE, Frasor J. Removal of serum lipids and lipid-derived metabolites to investigate breast cancer cell biology. *Proteomics* 2019; 19(18): e1800370
  39. Gomes L, Sorgine M, Passos CLA, Ferreira C, de Andrade IR, Silva JL, Atella GC, Mermelstein CS, Fialho E. Increase in fatty acids and flotillins upon resveratrol treatment of human breast cancer cells. *Sci Rep* 2019; 9(1): 13960
  40. Gago-Dominguez M, Jiang X, Castelao JE. Lipid peroxidation, oxidative stress genes and dietary factors in breast cancer protection: a hypothesis. *Breast Cancer Res* 2007; 9(1): 201
  41. Chen Z, Wang Y, Warden C, Chen S. Cross-talk between ER and HER2 regulates c-MYC-mediated glutamine metabolism in aromatase inhibitor resistant breast cancer cells. *J Steroid Biochem Mol Biol* 2015; 149: 118–127
  42. Geck RC, Tokar A. Nonessential amino acid metabolism in breast cancer. *Adv Biol Regul* 2016; 62: 11–17
  43. Wu Z, Wu J, Zhao Q, Fu S, Jin J. Emerging roles of aerobic glycolysis in breast cancer. *Clin Transl Oncol* 2020; 22(5): 631–646
  44. Macheda ML, Rogers S, Best JD. Molecular and cellular regulation of glucose transporter (GLUT) proteins in cancer. *J Cell Physiol* 2005; 202(3): 654–662
  45. Deng Y, Zou J, Deng T, Liu J. Clinicopathological and prognostic significance of GLUT1 in breast cancer: a meta-analysis. *Medicine (Baltimore)* 2018; 97(48): e12961
  46. Liu H, Ertay A, Peng P, Li J, Liu D, Xiong H, Zou Y, Qiu H, Hancock D, Yuan X, Huang WC, Ewing RM, Downward J, Wang Y. SGLT1 is required for the survival of triple-negative breast cancer cells via potentiation of EGFR activity. *Mol Oncol* 2019; 13(9): 1874–1886
  47. Lai B, Xiao Y, Pu H, Cao Q, Jing H, Liu X. Overexpression of SGLT1 is correlated with tumor development and poor prognosis of ovarian carcinoma. *Arch Gynecol Obstet* 2012; 285(5): 1455–1461
  48. Hanabata Y, Nakajima Y, Morita K, Kayamori K, Omura K. Coexpression of SGLT1 and EGFR is associated with tumor differentiation in oral squamous cell carcinoma. *Odontology* 2012; 100(2): 156–163
  49. Casneuf VF, Fonteyne P, Van Damme N, Demetter P, Pauwels P, de Hemptinne B, De Vos M, Van de Wiele C, Peeters M. Expression of SGLT1, Bcl-2 and p53 in primary pancreatic cancer

- related to survival. *Cancer Invest* 2008; 26(8): 852–859
50. Brown RS, Goodman TM, Zasadny KR, Greenson JK, Wahl RL. Expression of hexokinase II and Glut-1 in untreated human breast cancer. *Nucl Med Biol* 2002; 29(4): 443–453
  51. O'Neal J, Clem A, Reynolds L, Dougherty S, Imbert-Fernandez Y, Telang S, Chesney J, Clem BF. Inhibition of 6-phosphofructo-2-kinase (PFKFB3) suppresses glucose metabolism and the growth of HER2<sup>+</sup> breast cancer. *Breast Cancer Res Treat* 2016; 160(1): 29–40
  52. Lin Y, Lv F, Liu F, Guo X, Fan Y, Gu F, Gu J, Fu L. High expression of pyruvate kinase M2 is associated with chemosensitivity to epirubicin and 5-fluorouracil in breast cancer. *J Cancer* 2015; 6(11): 1130–1139
  53. Patra KC, Wang Q, Bhaskar PT, Miller L, Wang Z, Wheaton W, Chandel N, Laakso M, Muller WJ, Allen EL, Jha AK, Smolen GA, Clasquin MF, Robey B, Hay N. Hexokinase 2 is required for tumor initiation and maintenance and its systemic deletion is therapeutic in mouse models of cancer. *Cancer Cell* 2013; 24(2): 213–228
  54. Mishra D, Banerjee D. Lactate dehydrogenases as metabolic links between tumor and stroma in the tumor microenvironment. *Cancers (Basel)* 2019; 11(6): E750
  55. Read JA, Winter VJ, Eszes CM, Sessions RB, Brady RL. Structural basis for altered activity of M- and H-isozyme forms of human lactate dehydrogenase. *Proteins* 2001; 43(2): 175–185
  56. Patra KC, Hay N. The pentose phosphate pathway and cancer. *Trends Biochem Sci* 2014; 39(8): 347–354
  57. Pu H, Zhang Q, Zhao C, Shi L, Wang Y, Wang J, Zhang M. Overexpression of G6PD is associated with high risks of recurrent metastasis and poor progression-free survival in primary breast carcinoma. *World J Surg Oncol* 2015; 13(1): 323
  58. Yang X, Peng X, Huang J. Inhibiting 6-phosphogluconate dehydrogenase selectively targets breast cancer through AMPK activation. *Clin Transl Oncol* 2018; 20(9): 1145–1152
  59. Chen JQ, Russo J. Dysregulation of glucose transport, glycolysis, TCA cycle and glutaminolysis by oncogenes and tumor suppressors in cancer cells. *Biochim Biophys Acta* 2012; 1826(2): 370–384
  60. Castro-Vega LJ, Buffet A, De Cubas AA, Cascón A, Menara M, Khalifa E, Amar L, Azriel S, Bourdeau I, Chabre O, Currás-Freixes M, Franco-Vidal V, Guillaud-Bataille M, Simian C, Morin A, Letón R, Gómez-Graña A, Pollard PJ, Rustin P, Robledo M, Favier J, Gimenez-Roqueplo AP. Germline mutations in FH confer predisposition to malignant pheochromocytomas and paragangliomas. *Hum Mol Genet* 2014; 23(9): 2440–2446
  61. Clark GR, Sciacovelli M, Gaude E, Walsh DM, Kirby G, Simpson MA, Trembath RC, Berg JN, Woodward ER, Kinning E, Morrison PJ, Frezza C, Maher ER. Germline FH mutations presenting with pheochromocytoma. *J Clin Endocrinol Metab* 2014; 99(10): E2046–E2050
  62. Zhang J, Walsh MF, Wu G, Edmonson MN, Gruber TA, Easton J, Hedges D, Ma X, Zhou X, Yergeau DA, Wilkinson MR, Vadodaria B, Chen X, McGee RB, Hines-Dowell S, Nuccio R, Quinn E, Shurtleff SA, Rusch M, Patel A, Becksfors JB, Wang S, Weaver MS, Ding L, Mardis ER, Wilson RK, Gajjar A, Ellison DW, Pappo AS, Pui CH, Nichols KE, Downing JR. Germline mutations in predisposition genes in pediatric cancer. *N Engl J Med* 2015; 373(24): 2336–2346
  63. Fieuw A, Kumps C, Schramm A, Pattyn F, Menten B, Antonacci F, Sudmant P, Schulte JH, Van Roy N, Vergult S, Buckley PG, De Paepe A, Noguera R, Versteeg R, Stallings R, Eggert A, Vandesompele J, De Preter K, Speleman F. Identification of a novel recurrent 1q42.2-1qter deletion in high risk MYCN single copy 11q deleted neuroblastomas. *Int J Cancer* 2012; 130(11): 2599–2606
  64. Jiménez-Morales S, Pérez-Amado CJ, Langley E, Hidalgo-Miranda A. Overview of mitochondrial germline variants and mutations in human disease: focus on breast cancer. *Int J Oncol* 2018; 53(3): 923–936
  65. Montal ED, Dewi R, Bhalla K, Ou L, Hwang BJ, Ropell AE, Gordon C, Liu WJ, DeBerardinis RJ, Sudderth J, Twaddel W, Boros LG, Shroyer KR, Duraisamy S, Drapkin R, Powers RS, Rohde JM, Boxer MB, Wong KK, Girmun GD. PEPCK coordinates the regulation of central carbon metabolism to promote cancer cell growth. *Mol Cell* 2015; 60(4): 571–583
  66. Chen J, Lee HJ, Wu X, Huo L, Kim SJ, Xu L, Wang Y, He J, Bollu LR, Gao G, Su F, Briggs J, Liu X, Melman T, Asara JM, Fidler IJ, Cantley LC, Locasale JW, Weihua Z. Gain of glucose-independent growth upon metastasis of breast cancer cells to the brain. *Cancer Res* 2015; 75(3): 554–565
  67. Cao Y. Obesity protects cancer from drugs targeting blood vessels. *Cell Metab* 2018; 27(6): 1163–1165
  68. Vander Heiden MG, Cantley LC, Thompson CB. Understanding the Warburg effect: the metabolic requirements of cell proliferation. *Science* 2009; 324(5930): 1029–1033
  69. Baumann J, Sevinsky C, Conklin DS. Lipid biology of breast cancer. *Biochim Biophys Acta* 2013; 1831(10): 1509–1517
  70. Zhao J, Zhi Z, Wang C, Xing H, Song G, Yu X, Zhu Y, Wang X, Zhang X, Di Y. Exogenous lipids promote the growth of breast cancer cells via CD36. *Oncol Rep* 2017; 38(4): 2105–2115
  71. Yue S, Li J, Lee SY, Lee HJ, Shao T, Song B, Cheng L, Masterson TA, Liu X, Ratliff TL, Cheng JX. Cholesteryl ester accumulation induced by PTEN loss and PI3K/AKT activation underlies human prostate cancer aggressiveness. *Cell Metab* 2014; 19(3): 393–406
  72. Cao Y. Adipocyte and lipid metabolism in cancer drug resistance. *J Clin Invest* 2019; 129(8): 3006–3017
  73. Jung YY, Kim HM, Koo JS. Expression of lipid metabolism-related proteins in metastatic breast cancer. *PLoS One* 2015; 10(9): e0137204
  74. Iwamoto H, Abe M, Yang Y, Cui D, Seki T, Nakamura M, Hosaka K, Lim S, Wu J, He X, Sun X, Lu Y, Zhou Q, Shi W, Torimura T, Nie G, Li Q, Cao Y. Cancer lipid metabolism confers antiangiogenic drug resistance. *Cell Metab* 2018; 28(1): 104–117.e5
  75. Luengo A, Gui DY, Vander Heiden MG. Targeting metabolism for cancer therapy. *Cell Chem Biol* 2017; 24(9): 1161–1180
  76. Min HY, Lee HY. Oncogene-driven metabolic alterations in cancer. *Biomol Ther (Seoul)* 2018; 26(1): 45–56
  77. Metallo CM, Gameiro PA, Bell EL, Mattaini KR, Yang J, Hiller K, Jewell CM, Johnson ZR, Irvine DJ, Guarente L, Kelleher JK, Vander Heiden MG, Iliopoulos O, Stephanopoulos G. Reductive glutamine metabolism by IDH1 mediates lipogenesis under hypoxia. *Nature* 2012; 481(7381): 380–384
  78. DeBerardinis RJ, Mancuso A, Daikhin E, Nissim I, Yudkoff M, Wehrli S, Thompson CB. Beyond aerobic glycolysis: transformed

- cells can engage in glutamine metabolism that exceeds the requirement for protein and nucleotide synthesis. *Proc Natl Acad Sci USA* 2007; 104(49): 19345–19350
79. Szutowicz A, Kwiatkowski J, Angielski S. Lipogenetic and glycolytic enzyme activities in carcinoma and nonmalignant diseases of the human breast. *Br J Cancer* 1979; 39(6): 681–687
  80. Lee JH, Jang H, Lee SM, Lee JE, Choi J, Kim TW, Cho EJ, Youn HD. ATP-citrate lyase regulates cellular senescence via an AMPK- and p53-dependent pathway. *FEBS J* 2015; 282(2): 361–371
  81. Carling D, Zammit VA, Hardie DG. A common bicyclic protein kinase cascade inactivates the regulatory enzymes of fatty acid and cholesterol biosynthesis. *FEBS Lett* 1987; 223(2): 217–222
  82. Corominas-Faja B, Vellon L, Cuyàs E, Buxó M, Martin-Castillo B, Serra D, García J, Lupu R, Menendez JA. Clinical and therapeutic relevance of the metabolic oncogene fatty acid synthase in HER2<sup>+</sup> breast cancer. *Histol Histopathol* 2017; 32(7): 687–698
  83. Singh R, Cuervo AM. Lipophagy: connecting autophagy and lipid metabolism. *Int J Cell Biol* 2012; 2012: 282041
  84. Yen MC, Kan JY, Hsieh CJ, Kuo PL, Hou MF, Hsu YL. Association of long-chain acyl-coenzyme A synthetase 5 expression in human breast cancer by estrogen receptor status and its clinical significance. *Oncol Rep* 2017; 37(6): 3253–3260
  85. Orlando UD, Castillo AF, Medrano MAR, Solano AR, Maloberti PM, Podesta EJ. Acyl-CoA synthetase-4 is implicated in drug resistance in breast cancer cell lines involving the regulation of energy-dependent transporter expression. *Biochem Pharmacol* 2019; 159: 52–63
  86. Kuhajda FP, Jenner K, Wood FD, Hennigar RA, Jacobs LB, Dick JD, Pasternack GR. Fatty acid synthesis: a potential selective target for antineoplastic therapy. *Proc Natl Acad Sci USA* 1994; 91(14): 6379–6383
  87. Freedman LS, Clifford C, Messina M. Analysis of dietary fat, calories, body weight, and the development of mammary tumors in rats and mice: a review. *Cancer Res* 1990; 50(18): 5710–5719
  88. Zimmerman AW, Veerkamp JH. New insights into the structure and function of fatty acid-binding proteins. *Cell Mol Life Sci* 2002; 59(7): 1096–1116
  89. Nieman KM, Kenny HA, Penicka CV, Ladanyi A, Buell-Gutbrod R, Zillhardt MR, Romero IL, Carey MS, Mills GB, Hotamisligil GS, Yamada SD, Peter ME, Gwin K, Lengyel E. Adipocytes promote ovarian cancer metastasis and provide energy for rapid tumor growth. *Nat Med* 2011; 17(11): 1498–1503
  90. Li HY, Lv BB, Bi YH. FABP4 accelerates glioblastoma cell growth and metastasis through Wnt10b signalling. *Eur Rev Med Pharmacol Sci* 2018; 22(22): 7807–7818
  91. Guaita-Esteruelas S, Bosquet A, Saavedra P, Gumà J, Girona J, Lam EW, Amillano K, Borràs J, Masana L. Exogenous FABP4 increases breast cancer cell proliferation and activates the expression of fatty acid transport proteins. *Mol Carcinog* 2017; 56(1): 208–217
  92. Cheng F, Wang Z, Huang Y, Duan Y, Wang X. Investigation of salivary free amino acid profile for early diagnosis of breast cancer with ultra performance liquid chromatography-mass spectrometry. *Clin Chim Acta* 2015; 447: 23–31
  93. Erickson JW, Cerione RA. Glutaminase: a hot spot for regulation of cancer cell metabolism? *Oncotarget* 2010; 1(8): 734–740
  94. Shajahan-Haq AN, Cook KL, Schwartz-Roberts JL, Eltayeb AE, Demas DM, Warri AM, Facey CO, Hilakivi-Clarke LA, Clarke R. MYC regulates the unfolded protein response and glucose and glutamine uptake in endocrine resistant breast cancer. *Mol Cancer* 2014; 13(1): 239
  95. Fan J, Kamphorst JJ, Mathew R, Chung MK, White E, Shlomi T, Rabinowitz JD. Glutamine-driven oxidative phosphorylation is a major ATP source in transformed mammalian cells in both normoxia and hypoxia. *Mol Syst Biol* 2013; 9(1): 712
  96. Cha YJ, Kim ES, Koo JS. Amino acid transporters and glutamine metabolism in breast cancer. *Int J Mol Sci* 2018; 19(3): E907
  97. van Geldermalsen M, Wang Q, Nagarajah R, Marshall AD, Thoeng A, Gao D, Ritchie W, Feng Y, Bailey CG, Deng N, Harvey K, Beith JM, Selinger CI, O'Toole SA, Rasko JE, Holst J. ASCT2/SLC1A5 controls glutamine uptake and tumour growth in triple-negative basal-like breast cancer. *Oncogene* 2016; 35(24): 3201–3208
  98. Furuya M, Horiguchi J, Nakajima H, Kanai Y, Oyama T. Correlation of L-type amino acid transporter 1 and CD98 expression with triple negative breast cancer prognosis. *Cancer Sci* 2012; 103(2): 382–389
  99. Pollari S, Käkönen SM, Edgren H, Wolf M, Kohonen P, Sara H, Guise T, Nees M, Kallioniemi O. Enhanced serine production by bone metastatic breast cancer cells stimulates osteoclastogenesis. *Breast Cancer Res Treat* 2011; 125(2): 421–430
  100. Possemato R, Marks KM, Shaul YD, Pacold ME, Kim D, Birsoy K, Sethumadhavan S, Woo HK, Jang HG, Jha AK, Chen WW, Barrett FG, Stransky N, Tsun ZY, Cowley GS, Barretina J, Kalaany NY, Hsu PP, Ottina K, Chan AM, Yuan B, Garraway LA, Root DE, Mino-Kenudson M, Brachtel EF, Driggers EM, Sabatini DM. Functional genomics reveal that the serine synthesis pathway is essential in breast cancer. *Nature* 2011; 476(7360): 346–350
  101. Jain M, Nilsson R, Sharma S, Madhusudhan N, Kitami T, Souza AL, Kafri R, Kirschner MW, Clish CB, Mootha VK. Metabolite profiling identifies a key role for glycine in rapid cancer cell proliferation. *Science* 2012; 336(6084): 1040–1044
  102. Kim SK, Jung WH, Koo JS. Differential expression of enzymes associated with serine/glycine metabolism in different breast cancer subtypes. *PLoS One* 2014; 9(6): e101004
  103. Labuschagne CF, van den Broek NJ, Mackay GM, Vousden KH, Maddocks OD. Serine, but not glycine, supports one-carbon metabolism and proliferation of cancer cells. *Cell Rep* 2014; 7(4): 1248–1258
  104. Schito L, Semenza GL. Hypoxia-inducible factors: master regulators of cancer progression. *Trends Cancer* 2016; 2(12): 758–770
  105. Rey S, Schito L, Koritzinsky M, Wouters BG. Molecular targeting of hypoxia in radiotherapy. *Adv Drug Deliv Rev* 2017; 109: 45–62
  106. Bos R, van der Groep P, Greijer AE, Shvarts A, Meijer S, Pinedo HM, Semenza GL, van Diest PJ, van der Wall E. Levels of hypoxia-inducible factor-1 $\alpha$  independently predict prognosis in patients with lymph node negative breast carcinoma. *Cancer* 2003; 97(6): 1573–1581
  107. Gruber G, Greiner RH, Hlushchuk R, Aebbersold DM, Altermatt HJ, Berclaz G, Djonov V. Hypoxia-inducible factor 1  $\alpha$  in high-risk breast cancer: an independent prognostic parameter? *Breast Cancer Res* 2004; 6(3): R191–R198
  108. Guo X, Lee S, Cao P. The inhibitive effect of sh-HIF1A-AS2 on

- the proliferation, invasion, and pathological damage of breast cancer via targeting miR-548c-3p through regulating HIF-1 $\alpha$ /VEGF pathway *in vitro* and *in vivo*. *OncoTargets Ther* 2019; 12: 825–834
109. Wang Y, Zhang G, Han J. HIF1A-AS2 predicts poor prognosis and regulates cell migration and invasion in triple-negative breast cancer. *J Cell Biochem* 2019; 120(6): 10513–10518
  110. Zhang HS, Du GY, Zhang ZG, Zhou Z, Sun HL, Yu XY, Shi YT, Xiong DN, Li H, Huang YH. NRF2 facilitates breast cancer cell growth via HIF1-mediated metabolic reprogramming. *Int J Biochem Cell Biol* 2018; 95: 85–92
  111. Ponente M, Campanini L, Cuttano R, Piunti A, Delledonne GA, Coltella N, Valsecchi R, Villa A, Cavallaro U, Pattini L, Doglioni C, Bernardi R. PML promotes metastasis of triple-negative breast cancer through transcriptional regulation of HIF1A target genes. *JCI Insight* 2017; 2(4): e87380
  112. Sethuraman A, Brown M, Seagroves TN, Wu ZH, Pfeffer LM, Fan M. SMARCE1 regulates metastatic potential of breast cancer cells through the HIF1A/PTK2 pathway. *Breast Cancer Res* 2016; 18(1): 81
  113. Deb S, Johansson I, Byrne D, Nilsson C, kConFab Investigators, Constable L, Fjällskog ML, Dobrovic A, Hedenfalk I, Fox SB. Nuclear HIF1A expression is strongly prognostic in sporadic but not familial male breast cancer. *Mod Pathol* 2014; 27(9): 1223–1230
  114. Zhang H, Wong CC, Wei H, Gilkes DM, Korangath P, Chaturvedi P, Schito L, Chen J, Krishnamachary B, Winnard PT Jr, Raman V, Zhen L, Mitzner WA, Sukumar S, Semenza GL. HIF-1-dependent expression of angiopoietin-like 4 and L1CAM mediates vascular metastasis of hypoxic breast cancer cells to the lungs. *Oncogene* 2012; 31(14): 1757–1770
  115. Laughner E, Taghavi P, Chiles K, Mahon PC, Semenza GL. HER2 (neu) signaling increases the rate of hypoxia-inducible factor 1 $\alpha$  (HIF-1 $\alpha$ ) synthesis: novel mechanism for HIF-1-mediated vascular endothelial growth factor expression. *Mol Cell Biol* 2001; 21(12): 3995–4004
  116. Kamura T, Sato S, Iwai K, Czyzyk-Krzeska M, Conaway RC, Conaway JW. Activation of HIF1 $\alpha$  ubiquitination by a reconstituted von Hippel-Lindau (VHL) tumor suppressor complex. *Proc Natl Acad Sci USA* 2000; 97(19): 10430–10435
  117. Park SW, Chung NG, Hur SY, Kim HS, Yoo NJ, Lee SH. Mutational analysis of hypoxia-related genes HIF1 $\alpha$  and CUL2 in common human cancers. *APMIS* 2009; 117(12): 880–885
  118. Montagner M, Enzo E, Forcato M, Zanconato F, Parenti A, Rampazzo E, Basso G, Leo G, Rosato A, Bicchato S, Cordenonsi M, Piccolo S. SHARP1 suppresses breast cancer metastasis by promoting degradation of hypoxia-inducible factors. *Nature* 2012; 487(7407): 380–384
  119. Koyasu S, Kobayashi M, Goto Y, Hiraoka M, Harada H. Regulatory mechanisms of hypoxia-inducible factor 1 activity: two decades of knowledge. *Cancer Sci* 2018; 109(3): 560–571
  120. Courtney R, Ngo DC, Malik N, Ververis K, Tortorella SM, Karagiannis TC. Cancer metabolism and the Warburg effect: the role of HIF-1 and PI3K. *Mol Biol Rep* 2015; 42(4): 841–851
  121. Stubbs M, Griffiths JR. The altered metabolism of tumors: HIF-1 and its role in the Warburg effect. *Adv Enzyme Regul* 2010; 50(1): 44–55
  122. Ebert BL, Firth JD, Ratcliffe PJ. Hypoxia and mitochondrial inhibitors regulate expression of glucose transporter-1 via distinct Cis-acting sequences. *J Biol Chem* 1995; 270(49): 29083–29089
  123. Tang Y, Zhu J, Huang D, Hu X, Cai Y, Song X, Song Z, Hong C, Feng Z, Kang F. Mandibular osteotomy-induced hypoxia enhances osteoclast activation and acid secretion by increasing glycolysis. *J Cell Physiol* 2019; 234(7): 11165–11175
  124. Chiche J, Pommier S, Beneteau M, Mondragón L, Meynet O, Zunino B, Mouchotte A, Verhoeven E, Guyot M, Pagès G, Mounier N, Imbert V, Colosetti P, Goncalves D, Marchetti S, Brière J, Carles M, Thieblemont C, Ricci JE. GAPDH enhances the aggressiveness and the vascularization of non-Hodgkin's B lymphomas via NF- $\kappa$ B-dependent induction of HIF-1 $\alpha$ . *Leukemia* 2015; 29(5): 1163–1176
  125. Zhang T, Zhu X, Wu H, Jiang K, Zhao G, Shaikat A, Deng G, Qiu C. Targeting the ROS/PI3K/AKT/HIF-1 $\alpha$ /HK2 axis of breast cancer cells: combined administration of Polydatin and 2-Deoxy-d-glucose. *J Cell Mol Med* 2019; 23(5): 3711–3723
  126. Hamaguchi T, Iizuka N, Tsunedomi R, Hamamoto Y, Miyamoto T, Iida M, Tokuhisa Y, Sakamoto K, Takashima M, Tamesa T, Oka M. Glycolysis module activated by hypoxia-inducible factor 1 $\alpha$  is related to the aggressive phenotype of hepatocellular carcinoma. *Int J Oncol* 2008; 33(4): 725–731
  127. Kraemer LD, Schulte PM. Prior PCB exposure suppresses hypoxia-induced up-regulation of glycolytic enzymes in *Fundulus heteroclitus*. *Comp Biochem Physiol C Toxicol Pharmacol* 2004; 139(1-3): 23–29
  128. Cui XG, Han ZT, He SH, Wu XD, Chen TR, Shao CH, Chen DL, Su N, Chen YM, Wang T, Wang J, Song DW, Yan WJ, Yang XH, Liu T, Wei HF, Xiao J. HIF1/2 $\alpha$  mediates hypoxia-induced LDHA expression in human pancreatic cancer cells. *Oncotarget* 2017; 8(15): 24840–24852
  129. Sun Y, He W, Luo M, Zhou Y, Chang G, Ren W, Wu K, Li X, Shen J, Zhao X, Hu Y. SREBP1 regulates tumorigenesis and prognosis of pancreatic cancer through targeting lipid metabolism. *Tumour Biol* 2015; 36(6): 4133–4141
  130. Li S, Oh YT, Yue P, Khuri FR, Sun SY. Inhibition of mTOR complex 2 induces GSK3/FBXW7-dependent degradation of sterol regulatory element-binding protein 1 (SREBP1) and suppresses lipogenesis in cancer cells. *Oncogene* 2016; 35(5): 642–650
  131. Porstmann T, Santos CR, Griffiths B, Cully M, Wu M, Leevers S, Griffiths JR, Chung YL, Schulze A. SREBP activity is regulated by mTORC1 and contributes to Akt-dependent cell growth. *Cell Metab* 2008; 8(3): 224–236
  132. Krishnan J, Suter M, Windak R, Krebs T, Felley A, Montessuit C, Tokarska-Schlattner M, Aasum E, Bogdanova A, Perriard E, Perriard JC, Larsen T, Pedrazzini T, Krek W. Activation of a HIF1 $\alpha$ -PPAR $\gamma$  axis underlies the integration of glycolytic and lipid anabolic pathways in pathologic cardiac hypertrophy. *Cell Metab* 2009; 9(6): 512–524
  133. Wang H, Airola MV, Reue K. How lipid droplets “TAG” along: Glycerolipid synthetic enzymes and lipid storage. *Biochim Biophys Acta Mol Cell Biol Lipids* 2017; 1862(10 Pt B): 1131–1145
  134. Mylonis I, Sembongi H, Befani C, Liakos P, Sinioglou S, Simos G. Hypoxia causes triglyceride accumulation by HIF-1-mediated



- stimulation of lipin 1 expression. *J Cell Sci* 2012; 125(Pt 14): 3485–3493
135. Triantafyllou EA, Georgatsou E, Mylonis I, Simos G, Paraskeva E. Expression of AGPAT2, an enzyme involved in the glycerophospholipid/triacylglycerol biosynthesis pathway, is directly regulated by HIF-1 and promotes survival and etoposide resistance of cancer cells under hypoxia. *Biochim Biophys Acta Mol Cell Biol Lipids* 2018; 1863(9): 1142–1152
  136. Kucejova B, Sunny N E, Nguyen A D, Hallac R, Fu X, Penalllopis S, Mason RP, Deberardinis RJ, Xie XJ, Debose-Boyd R, Kodibagkar VD, Burgess SC, Brugarolas J. Uncoupling hypoxia signaling from oxygen sensing in the liver results in hypoketotic hypoglycemic death. *Oncogene* 2011; 30(18): 2147–2160
  137. Huang D, Li T, Li X, Zhang L, Sun L, He X, Zhong X, Jia D, Song L, Semenza GL, Gao P, Zhang H. HIF-1-mediated suppression of acyl-CoA dehydrogenases and fatty acid oxidation is critical for cancer progression. *Cell Rep* 2014; 8(6): 1930–1942
  138. Liu Y, Ma Z, Zhao C, Wang Y, Wu G, Xiao J, McClain CJ, Li X, Feng W. HIF-1 $\alpha$  and HIF-2 $\alpha$  are critically involved in hypoxia-induced lipid accumulation in hepatocytes through reducing PGC-1 $\alpha$ -mediated fatty acid  $\beta$ -oxidation. *Toxicol Lett* 2014; 226(2): 117–123
  139. Mylonis I, Simos G, Paraskeva E. Hypoxia-inducible factors and the regulation of lipid metabolism. *Cells* 2019; 8(3): E214
  140. Chen C, Pore N, Behrooz A, Ismail-Beigi F, Maity A. Regulation of glut1 mRNA by hypoxia-inducible factor-1. Interaction between H-ras and hypoxia. *J Biol Chem* 2001; 276(12): 9519–9525
  141. Liu Q, Möller U, Flügel D, Kietzmann T. Induction of plasminogen activator inhibitor I gene expression by intracellular calcium via hypoxia-inducible factor-1. *Blood* 2004; 104(13): 3993–4001
  142. Mathupala SP, Rempel A, Pedersen PL. Glucose catabolism in cancer cells: identification and characterization of a marked activation response of the type II hexokinase gene to hypoxic conditions. *J Biol Chem* 2001; 276(46): 43407–43412
  143. Denko NC. Hypoxia, HIF1 and glucose metabolism in the solid tumour. *Nat Rev Cancer* 2008; 8(9): 705–713
  144. Jeon YK, Yoo DR, Jang YH, Jang SY, Nam MJ. Sulforaphane induces apoptosis in human hepatic cancer cells through inhibition of 6-phosphofructo-2-kinase/fructose-2,6-bisphosphatase4, mediated by hypoxia inducible factor-1-dependent pathway. *Biochim Biophys Acta* 2011; 1814(10): 1340–1348
  145. Ullah MS, Davies AJ, Halestrap AP. The plasma membrane lactate transporter MCT4, but not MCT1, is up-regulated by hypoxia through a HIF-1 $\alpha$ -dependent mechanism. *J Biol Chem* 2006; 281(14): 9030–9037
  146. Castellano J, Aledo R, Sendra J, Costales P, Juan-Babot O, Badimon L, Llorente-Cortés V. Hypoxia stimulates low-density lipoprotein receptor-related protein-1 expression through hypoxia-inducible factor-1 $\alpha$  in human vascular smooth muscle cells. *Arterioscler Thromb Vasc Biol* 2011; 31(6): 1411–1420
  147. Perman JC, Boström P, Lindbom M, Lidberg U, StÅhlman M, Hägg D, Lindskog H, Scharin Tång M, Omerovic E, Mattsson Hultén L, Jeppsson A, Petursson P, Herlitz J, Olivecrona G, Strickland DK, Ekroos K, Olofsson SO, Borén J. The VLDL receptor promotes lipotoxicity and increases mortality in mice following an acute myocardial infarction. *J Clin Invest* 2011; 121(7): 2625–2640
  148. Furuta E, Pai SK, Zhan R, Bandyopadhyay S, Watabe M, Mo YY, Hirota S, Hosobe S, Tsukada T, Miura K, Kamada S, Saito K, Iizumi M, Liu W, Ericsson J, Watabe K. Fatty acid synthase gene is up-regulated by hypoxia via activation of Akt and sterol regulatory element binding protein-1. *Cancer Res* 2008; 68(4): 1003–1011
  149. Gimm T, Wiese M, Teschemacher B, Deggerich A, Schödel J, Knaup KX, Hackenbeck T, Hellerbrand C, Amann K, Wiesener MS, Höning S, Eckardt KU, Warnecke C. Hypoxia-inducible protein 2 is a novel lipid droplet protein and a specific target gene of hypoxia-inducible factor-1. *FASEB J* 2010; 24(11): 4443–4458
  150. Xiang L, Mou J, Shao B, Wei Y, Liang H, Takano N, Semenza GL, Xie G. Glutaminase 1 expression in colorectal cancer cells is induced by hypoxia and required for tumor growth, invasion, and metastatic colonization. *Cell Death Dis* 2019; 10(2): 40
  151. Deming SL, Nass SJ, Dickson RB, Trock BJ. C-myc amplification in breast cancer: a meta-analysis of its occurrence and prognostic relevance. *Br J Cancer* 2000; 83(12): 1688–1695
  152. Fallah Y, Brundage J, Allegakoen P, Shajahan-Haq AN. MYC-driven pathways in breast cancer subtypes. *Biomolecules* 2017; 7(3): E53
  153. Shim H, Dolde C, Lewis BC, Wu CS, Dang G, Jungmann RA, Dalla-Favera R, Dang CV. c-Myc transactivation of LDH-A: implications for tumor metabolism and growth. *Proc Natl Acad Sci USA* 1997; 94(13): 6658–6663
  154. Zhang Y, Zhang X, Wang X, Gan L, Yu G, Chen Y, Liu K, Li P, Pan J, Wang J, Qin S. Inhibition of LDH-A by lentivirus-mediated small interfering RNA suppresses intestinal-type gastric cancer tumorigenicity through the downregulation of Oct4. *Cancer Lett* 2012; 321(1): 45–54
  155. Kim JW, Zeller KI, Wang Y, Jegga AG, Aronow BJ, O'Donnell KA, Dang CV. Evaluation of myc E-box phylogenetic footprints in glycolytic genes by chromatin immunoprecipitation assays. *Mol Cell Biol* 2004; 24(13): 5923–5936
  156. Osthus RC, Shim H, Kim S, Li Q, Reddy R, Mukherjee M, Xu Y, Wonsey D, Lee LA, Dang CV. Deregulation of glucose transporter 1 and glycolytic gene expression by c-Myc. *J Biol Chem* 2000; 275(29): 21797–21800
  157. Corn PG, Ricci MS, Scata KA, Arsham AM, Simon MC, Dicker DT, El-Deiry WS. Mxi1 is induced by hypoxia in a HIF-1-dependent manner and protects cells from c-Myc-induced apoptosis. *Cancer Biol Ther* 2005; 4(11): 1285–1294
  158. Gordan JD, Thompson CB, Simon MC. HIF and c-Myc: sibling rivals for control of cancer cell metabolism and proliferation. *Cancer Cell* 2007; 12(2): 108–113
  159. Dewhirst MW. Intermittent hypoxia furthers the rationale for hypoxia-inducible factor-1 targeting. *Cancer Res* 2007; 67(3): 854–855
  160. Dang CV. The interplay between MYC and HIF in the Warburg effect. *Ernst Schering Found Symp Proc* 2007; (4): 35–53
  161. Kim JW, Tchernyshyov I, Semenza GL, Dang CV. HIF-1-mediated expression of pyruvate dehydrogenase kinase: a metabolic switch required for cellular adaptation to hypoxia. *Cell Metab* 2006; 3(3): 177–185
  162. Lukey MJ, Wilson KF, Cerione RA. Therapeutic strategies impacting cancer cell glutamine metabolism. *Future Med Chem*

- 2013; 5(14): 1685–1700
163. Shroff EH, Eberlin LS, Dang VM, Gouw AM, Gabay M, Adam SJ, Bellovin DI, Tran PT, Philbrick WM, Garcia-Ocana A, Casey SC, Li Y, Dang CV, Zare RN, Felsher DW. MYC oncogene overexpression drives renal cell carcinoma in a mouse model through glutamine metabolism. *Proc Natl Acad Sci USA* 2015; 112(21): 6539–6544
164. Xiao D, Ren P, Su H, Yue M, Xiu R, Hu Y, Liu H, Qing G. Myc promotes glutaminolysis in human neuroblastoma through direct activation of glutaminase 2. *Oncotarget* 2015; 6(38): 40655–40666
165. Deng SJ, Chen HY, Zeng Z, Deng S, Zhu S, Ye Z, He C, Liu ML, Huang K, Zhong JX, Xu FY, Li Q, Liu Y, Wang C, Zhao G. Nutrient stress-dysregulated antisense lncRNA GLS-AS impairs GLS-mediated metabolism and represses pancreatic cancer progression. *Cancer Res* 2019; 79(7): 1398–1412
166. Craze ML, Cheung H, Jewa N, Coimbra NDM, Soria D, El-Ansari R, Aleskandarany MA, Wai Cheng K, Diez-Rodriguez M, Nolan CC, Ellis IO, Rakha EA, Green AR. MYC regulation of glutamine-proline regulatory axis is key in luminal B breast cancer. *Br J Cancer* 2018; 118(2): 258–265
167. Qie S, Chu C, Li W, Wang C, Sang N. ErbB2 activation upregulates glutaminase 1 expression which promotes breast cancer cell proliferation. *J Cell Biochem* 2014; 115(3): 498–509
168. Haikala HM, Marques E, Turunen M, Klefström J. Myc requires RhoA/SRF to reprogram glutamine metabolism. *Small GTPases* 2018; 9(3): 274–282
169. Sabnis HS, Somasagara RR, Bunting KD. Targeting MYC dependence by metabolic inhibitors in cancer. *Genes (Basel)* 2017; 8(4): E114
170. Soga T. Cancer metabolism: key players in metabolic reprogramming. *Cancer Sci* 2013; 104(3): 275–281
171. Liu R, Li Y, Tian L, Shi H, Wang J, Liang Y, Sun B, Wang S, Zhou M, Wu L, Nie J, Lin B, Tang S, Zhang Y, Wang G, Zhang C, Han J, Xu B, Liu L, Gong K, Zheng T. Gankyrin drives metabolic reprogramming to promote tumorigenesis, metastasis and drug resistance through activating  $\beta$ -catenin/c-Myc signaling in human hepatocellular carcinoma. *Cancer Lett* 2019; 443: 34–46
172. Ritorto MS, Rhode H, Vogel A, Borlak J. Regulation of glycosylphosphatidylinositol-anchored proteins and GPI-phospholipase D in a c-Myc transgenic mouse model of hepatocellular carcinoma and human HCC. *Biol Chem* 2016; 397(11): 1147–1162
173. Blevins MA, Towers CG, Patrick AN, Zhao R, Ford HL. The SIX1-EYA transcriptional complex as a therapeutic target in cancer. *Expert Opin Ther Targets* 2015; 19(2): 213–225
174. Hua L, Fan L, Aichun W, Yongjin Z, Qingqing C, Xiaojian W. Inhibition of Six1 promotes apoptosis, suppresses proliferation, and migration of osteosarcoma cells. *Tumour Biol* 2014; 35(3): 1925–1931
175. Yu Y, Davicioni E, Triche TJ, Merlino G. The homeoprotein six1 transcriptionally activates multiple protumorigenic genes but requires ezrin to promote metastasis. *Cancer Res* 2006; 66(4): 1982–1989
176. Jin H, Cui M, Kong J, Cui X, Lin Z, Wu Q, Liu S. Sineoculis homeobox homolog 1 protein is associated with breast cancer progression and survival outcome. *Exp Mol Pathol* 2014; 97(2): 247–252
177. Zhang Y, Wang S, Liu Z, Yang L, Liu J, Xiu M. Increased Six1 expression in macrophages promotes hepatocellular carcinoma growth and invasion by regulating MMP-9. *J Cell Mol Med* 2019; 23(7): 4523–4533
178. Xie Y, Jin P, Sun X, Jiao T, Zhang Y, Li Y, Sun M. SIX1 is upregulated in gastric cancer and regulates proliferation and invasion by targeting the ERK pathway and promoting epithelial-mesenchymal transition. *Cell Biochem Funct* 2018; 36(8): 413–419
179. Nishimura T, Tamaoki M, Komatsuzaki R, Oue N, Taniguchi H, Komatsu M, Aoyagi K, Minashi K, Chiwaki F, Shinohara H, Tachimori Y, Yasui W, Muto M, Yoshida T, Sakai Y, Sasaki H. SIX1 maintains tumor basal cells via transforming growth factor- $\beta$  pathway and associates with poor prognosis in esophageal cancer. *Cancer Sci* 2017; 108(2): 216–225
180. Dumay A, Feugeas JP, Wittmer E, Lehmann-Che J, Bertheau P, Espié M, Plassa LF, Cottu P, Marty M, André F, Sotiriou C, Pusztai L, de Thé H. Distinct tumor protein p53 mutants in breast cancer subgroups. *Int J Cancer* 2013; 132(5): 1227–1231
181. Schon K, Tischkowitz M. Clinical implications of germline mutations in breast cancer: TP53. *Breast Cancer Res Treat* 2018; 167(2): 417–423
182. Schwartzberg-Bar-Yoseph F, Armoni M, Karnieli E. The tumor suppressor p53 down-regulates glucose transporters GLUT1 and GLUT4 gene expression. *Cancer Res* 2004; 64(7): 2627–2633
183. Watanabe M, Naraba H, Sakyo T, Kitagawa T. DNA damage-induced modulation of GLUT3 expression is mediated through p53-independent extracellular signal-regulated kinase signaling in HeLa cells. *Mol Cancer Res* 2010; 8(11): 1547–1557
184. Contractor T, Harris CR. p53 negatively regulates transcription of the pyruvate dehydrogenase kinase Pdk2. *Cancer Res* 2012; 72(2): 560–567
185. Mikawa T, Maruyama T, Okamoto K, Nakagama H, Lleonart ME, Tsusaka T, Hori K, Murakami I, Izumi T, Takaori-Kondo A, Yokode M, Peters G, Beach D, Kondoh H. Senescence-inducing stress promotes proteolysis of phosphoglycerate mutase via ubiquitin ligase Mdm2. *J Cell Biol* 2014; 204(5): 729–745
186. Boidot R, Végran F, Meulle A, Le Breton A, Dessy C, Sonveaux P, Lizard-Nacol S, Feron O. Regulation of monocarboxylate transporter MCT1 expression by p53 mediates inward and outward lactate fluxes in tumors. *Cancer Res* 2012; 72(4): 939–948
187. Wang YB, Xu O, Zhang RJ, Shan CG. Study on the relationship between MCT-1 and p53 in laryngeal squamous cell carcinoma. *J Clin Otorhinolaryngol Head Neck Surgery (Lin Chung Er Bi Yan Hou Tou Jing Wai Ke Za Zhi)* 2017; 31(11): 825–829 (in Chinese)
188. Jiang P, Du W, Wang X, Mancuso A, Gao X, Wu M, Yang X. p53 regulates biosynthesis through direct inactivation of glucose-6-phosphate dehydrogenase. *Nat Cell Biol* 2011; 13(3): 310–316
189. Geng J, Yuan X, Wei M, Wu J, Qin ZH. The diverse role of TIGAR in cellular homeostasis and cancer. *Free Radic Res* 2018; 52(11–12): 1240–1249
190. Ko YH, Domingo-Vidal M, Roche M, Lin Z, Whitaker-Menezes D, Seifert E, Capparelli C, Tuluc M, Birbe RC, Tassone P, Curry JM, Navarro-Sabaté À, Manzano A, Bartrons R, Caro J, Martinez-Outschoorn U. TP53-inducible glycolysis and apoptosis regulator (TIGAR) metabolically reprograms carcinoma and stromal cells in breast cancer. *J Biol Chem* 2016; 291(51): 26291–26303

191. Zhou JH, Zhang TT, Song DD, Xia YF, Qin ZH, Sheng R. TIGAR contributes to ischemic tolerance induced by cerebral preconditioning through scavenging of reactive oxygen species and inhibition of apoptosis. *Sci Rep* 2016; 6(1): 27096
192. Won KY, Lim SJ, Kim GY, Kim YW, Han SA, Song JY, Lee DK. Regulatory role of p53 in cancer metabolism via SCO2 and TIGAR in human breast cancer. *Hum Pathol* 2012; 43(2): 221–228
193. Maddocks OD, Berkers CR, Mason SM, Zheng L, Blyth K, Gottlieb E, Vousden KH. Serine starvation induces stress and p53-dependent metabolic remodelling in cancer cells. *Nature* 2013; 493(7433): 542–546
194. Amelio I, Markert EK, Rufini A, Antonov AV, Sayan BS, Tucci P, Agostini M, Mineo TC, Levine AJ, Melino G. p73 regulates serine biosynthesis in cancer. *Oncogene* 2014; 33(42): 5039–5046
195. Liu J, Zhang C, Feng Z. Tumor suppressor p53 and its gain-of-function mutants in cancer. *Acta Biochim Biophys Sin (Shanghai)* 2014; 46(3): 170–179
196. Parrales A, Iwakuma T. p53 as a regulator of lipid metabolism in cancer. *Int J Mol Sci* 2016; 17(12): E2074
197. Le Romancer M, Poulard C, Cohen P, Sentis S, Renoir JM, Corbo L. Cracking the estrogen receptor's posttranslational code in breast tumors. *Endocr Rev* 2011; 32(5): 597–622
198. Vasudevan D, Hickok JR, Bovee RC, Pham V, Mantell LL, Bahroos N, Kanabar P, Cao XJ, Maienschein-Cline M, Garcia BA, Thomas DD. Nitric oxide regulates gene expression in cancers by controlling histone posttranslational modifications. *Cancer Res* 2015; 75(24): 5299–5308
199. Matic S, Quaglino E, Arata L, Riccardo F, Pegoraro M, Vallino M, Cavallo F, Noris E. The rat ErbB2 tyrosine kinase receptor produced in plants is immunogenic in mice and confers protective immunity against ErbB2<sup>+</sup> mammary cancer. *Plant Biotechnol J* 2016; 14(1): 153–159
200. Ji Y, Yang C, Tang Z, Yang Y, Tian Y, Yao H, Zhu X, Zhang Z, Ji J, Zheng X. Adenylate kinase hCINAP determines self-renewal of colorectal cancer stem cells by facilitating LDHA phosphorylation. *Nat Commun* 2017; 8(1): 15308
201. Zhao D, Zou SW, Liu Y, Zhou X, Mo Y, Wang P, Xu YH, Dong B, Xiong Y, Lei QY, Guan KL. Lysine-5 acetylation negatively regulates lactate dehydrogenase A and is decreased in pancreatic cancer. *Cancer Cell* 2013; 23(4): 464–476
202. Anastasiou D, Pouligiannis G, Asara JM, Boxer MB, Jiang JK, Shen M, Bellinger G, Sasaki AT, Locasale JW, Auld DS, Thomas CJ, Vander Heiden MG, Cantley LC. Inhibition of pyruvate kinase M2 by reactive oxygen species contributes to cellular antioxidant responses. *Science* 2011; 334(6060): 1278–1283
203. Hu E, Kim JB, Sarraf P, Spiegelman BM. Inhibition of adipogenesis through MAP kinase-mediated phosphorylation of PPAR $\gamma$ . *Science* 1996; 274(5295): 2100–2103
204. Floyd ZE, Stephens JM. Control of peroxisome proliferator-activated receptor  $\gamma$ 2 stability and activity by SUMOylation. *Obes Res* 2004; 12(6): 921–928
205. Watanabe M, Takahashi H, Saeki Y, Ozaki T, Itoh S, Suzuki M, Mizushima W, Tanaka K, Hatakeyama S. The E3 ubiquitin ligase TRIM23 regulates adipocyte differentiation via stabilization of the adipogenic activator PPAR $\gamma$ . *eLife* 2015; 4: e05615
206. Brunmeir R, Xu F. Functional regulation of PPARs through post-translational modifications. *Int J Mol Sci* 2018; 19(6): E1738
207. Xiaoping Z, Fajun Y. Regulation of SREBP-mediated gene expression. *Sheng Wu Wu Li Hsueh Bao* 2012; 28(4): 287–294
208. Ascenção CFR, Nagampalli RSK, Islam Z, Pinheiro MP, Menezes Dos Reis L, Pauletti BA, de Guzzi Cassago CA, Granato DC, Paes Leme AF, Dias SMG. N-terminal phosphorylation of glutaminase C decreases its enzymatic activity and cancer cell migration. *Biochimie* 2018; 154: 69–76
209. Han T, Zhan W, Gan M, Liu F, Yu B, Chin YE, Wang JB. Phosphorylation of glutaminase by PKC $\epsilon$  is essential for its enzymatic activity and critically contributes to tumorigenesis. *Cell Res* 2018; 28(6): 655–669
210. Miyamoto S, Murphy AN, Brown JH. Akt mediates mitochondrial protection in cardiomyocytes through phosphorylation of mitochondrial hexokinase-II. *Cell Death Differ* 2008; 15(3): 521–529
211. Yi W, Clark PM, Mason DE, Keenan MC, Hill C, Goddard WA 3rd, Peters EC, Driggers EM, Hsieh-Wilson LC. Phosphofructokinase 1 glycosylation regulates cell growth and metabolism. *Science* 2012; 337(6097): 975–980
212. Bertrand L, Alessi DR, Deprez J, Deak M, Viaene E, Rider MH, Hue L. Heart 6-phosphofructo-2-kinase activation by insulin results from Ser-466 and Ser-483 phosphorylation and requires 3-phosphoinositide-dependent kinase-1, but not protein kinase B. *J Biol Chem* 1999; 274(43): 30927–30933
213. Hitosugi T, Zhou L, Fan J, Elf S, Zhang L, Xie J, Wang Y, Gu TL, Alečković M, LeRoy G, Kang Y, Kang HB, Seo JH, Shan C, Jin P, Gong W, Lonial S, Arellano ML, Khoury HJ, Chen GZ, Shin DM, Khuri FR, Boggon TJ, Kang S, He C, Chen J. Tyr26 phosphorylation of PGAM1 provides a metabolic advantage to tumours by stabilizing the active conformation. *Nat Commun* 2013; 4(1): 1790
214. Hallows WC, Yu W, Denu JM. Regulation of glycolytic enzyme phosphoglycerate mutase-1 by Sirt1 protein-mediated deacetylation. *J Biol Chem* 2012; 287(6): 3850–3858
215. Hitosugi T, Kang S, Vander Heiden MG, Chung TW, Elf S, Lythgoe K, Dong S, Lonial S, Wang X, Chen GZ, Xie J, Gu TL, Polakiewicz RD, Roesel JL, Boggon TJ, Khuri FR, Gilliland DG, Cantley LC, Kaufman J, Chen J. Tyrosine phosphorylation inhibits PKM2 to promote the Warburg effect and tumor growth. *Sci Signal* 2009; 2(97): ra73
216. Yang W, Zheng Y, Xia Y, Ji H, Chen X, Guo F, Lyssiotis CA, Aldape K, Cantley LC, Lu Z. ERK1/2-dependent phosphorylation and nuclear translocation of PKM2 promotes the Warburg effect. *Nat Cell Biol* 2012; 14(12): 1295–1304
217. Lv L, Li D, Zhao D, Lin R, Chu Y, Zhang H, Zha Z, Liu Y, Li Z, Xu Y, Wang G, Huang Y, Xiong Y, Guan KL, Lei QY. Acetylation targets the M2 isoform of pyruvate kinase for degradation through chaperone-mediated autophagy and promotes tumor growth. *Mol Cell* 2011; 42(6): 719–730
218. Fan J, Shan C, Kang HB, Elf S, Xie J, Tucker M, Gu TL, Aguiar M, Lonning S, Chen H, Mohammadi M, Britton LM, Garcia BA, Alečković M, Kang Y, Kaluz S, Devi N, Van Meir EG, Hitosugi T, Seo JH, Lonial S, Gaddh M, Arellano M, Khoury HJ, Khuri FR, Boggon TJ, Kang S, Chen J. Tyr phosphorylation of PDP1 toggles recruitment between ACAT1 and SIRT3 to regulate the pyruvate dehydrogenase complex. *Mol Cell* 2014; 53(4): 534–548
219. Fan J, Hitosugi T, Chung TW, Xie J, Ge Q, Gu TL, Polakiewicz RD, Chen GZ, Boggon TJ, Lonial S, Khuri FR, Kang S, Chen J.

- Tyrosine phosphorylation of lactate dehydrogenase A is important for NADH/NAD<sup>+</sup> redox homeostasis in cancer cells. *Mol Cell Biol* 2011; 31(24): 4938–4950
220. Hitosugi T, Fan J, Chung TW, Lythgoe K, Wang X, Xie J, Ge Q, Gu TL, Polakiewicz RD, Roesel JL, Chen GZ, Boggon TJ, Lonial S, Fu H, Khuri FR, Kang S, Chen J. Tyrosine phosphorylation of mitochondrial pyruvate dehydrogenase kinase 1 is important for cancer metabolism. *Mol Cell* 2011; 44(6): 864–877
221. Fan J, Kang HB, Shan C, Elf S, Lin R, Xie J, Gu TL, Aguiar M, Lonning S, Chung TW, Arellano M, Khoury HJ, Shin DM, Khuri FR, Boggon TJ, Kang S, Chen J. Tyr-301 phosphorylation inhibits pyruvate dehydrogenase by blocking substrate binding and promotes the Warburg effect. *J Biol Chem* 2014; 289(38): 26533–26541
222. Roche TE, Hiromasa Y. Pyruvate dehydrogenase kinase regulatory mechanisms and inhibition in treating diabetes, heart ischemia, and cancer. *Cell Mol Life Sci* 2007; 64(7-8): 830–849
223. Yi G, He Z, Zhou X, Xian L, Yuan T, Jia X, Hong J, He L, Liu J. Low concentration of metformin induces a p53-dependent senescence in hepatoma cells via activation of the AMPK pathway. *Int J Oncol* 2013; 43(5): 1503–1510
224. Vogelstein B, Lane D, Levine AJ. Surfing the p53 network. *Nature* 2000; 408(6810): 307–310
225. Jeong JW, Bae MK, Ahn MY, Kim SH, Sohn TK, Bae MH, Yoo MA, Song EJ, Lee KJ, Kim KW. Regulation and destabilization of HIF-1 $\alpha$  by ARD1-mediated acetylation. *Cell* 2002; 111(5): 709–720
226. Giandomenico V, Simonsson M, Grönroos E, Ericsson J. Coactivator-dependent acetylation stabilizes members of the SREBP family of transcription factors. *Mol Cell Biol* 2003; 23(7): 2587–2599
227. McDonald CJ, Aceff E, Kennedy R, Taylor L, Curthoys NP. Effect of lysine to alanine mutations on the phosphate activation and BPTES inhibition of glutaminase. *Neurochem Int* 2015; 88: 10–14
228. Engin A. Obesity-associated breast cancer: analysis of risk factors. *Adv Exp Med Biol* 2017; 960: 571–606
229. Haluska P, Menefee M, Plimack ER, Rosenberg J, Northfelt D, LaVallee T, Shi L, Yu XQ, Burke P, Huang J, Viner J, McDevitt J, LoRusso P. Phase I dose-escalation study of MEDI-573, a bispecific, antiligand monoclonal antibody against IGF1 and IGF2, in patients with advanced solid tumors. *Clin Cancer Res* 2014; 20(18): 4747–4757
230. Liang J, Mills GB. AMPK: a contextual oncogene or tumor suppressor? *Cancer Res* 2013; 73(10): 2929–2935
231. Cao W, Li J, Hao Q, Vadgama JV, Wu Y. AMP-activated protein kinase: a potential therapeutic target for triple-negative breast cancer. *Breast Cancer Res* 2019; 21(1): 29
232. Menendez JA, Lupu R. Fatty acid synthase (FASN) as a therapeutic target in breast cancer. *Expert Opin Ther Targets* 2017; 21(11): 1001–1016
233. Kageyama S, Ii H, Taniguchi K, Kubota S, Yoshida T, Isono T, Chano T, Yoshiya T, Ito K, Yoshiki T, Kawachi A, Nakata S. Mechanisms of tumor growth inhibition by depletion of  $\gamma$ -glutamylcyclotransferase (GGCT): a novel molecular target for anticancer therapy. *Int J Mol Sci* 2018; 19(7): E2054
234. Ii H, Yoshiya T, Nakata S, Taniguchi K, Hidaka K, Tsuda S, Mochizuki M, Nishiuchi Y, Tsuda Y, Ito K, Kageyama S, Yoshiki T. A novel prodrug of a  $\gamma$ -glutamylcyclotransferase inhibitor suppresses cancer cell proliferation *in vitro* and inhibits tumor growth in a xenograft mouse model of prostate cancer. *Chem-MedChem* 2018; 13(2): 155–163
235. Curtin NJ, Hughes AN. Pemetrexed disodium, a novel antifolate with multiple targets. *Lancet Oncol* 2001; 2(5): 298–306
236. Burnet FM. The concept of immunological surveillance. *Prog Exp Tumor Res* 1970; 13: 1–27
237. Mittal D, Gubin MM, Schreiber RD, Smyth MJ. New insights into cancer immunoediting and its three component phases—elimination, equilibrium and escape. *Curr Opin Immunol* 2014; 27: 16–25
238. Schreiber RD, Old LJ, Smyth MJ. Cancer immunoediting: integrating immunity's roles in cancer suppression and promotion. *Science* 2011; 331(6024): 1565–1570
239. Ceeraz S, Nowak EC, Noelle RJ. B7 family checkpoint regulators in immune regulation and disease. *Trends Immunol* 2013; 34(11): 556–563
240. Topalian SL, Drake CG, Pardoll DM. Immune checkpoint blockade: a common denominator approach to cancer therapy. *Cancer Cell* 2015; 27(4): 450–461
241. Menzies AM, Long GV. Recent advances in melanoma systemic therapy. BRAF inhibitors, CTLA4 antibodies and beyond. *Eur J Cancer* 2013; 49(15): 3229–3241
242. Takahashi T, Tagami T, Yamazaki S, Uede T, Shimizu J, Sakaguchi N, Mak TW, Sakaguchi S. Immunologic self-tolerance maintained by CD25<sup>+</sup>CD4<sup>+</sup> regulatory T cells constitutively expressing cytotoxic T lymphocyte-associated antigen 4. *J Exp Med* 2000; 192(2): 303–310
243. Yu H, Yang J, Jiao S, Li Y, Zhang W, Wang J. Cytotoxic T lymphocyte antigen 4 expression in human breast cancer: implications for prognosis. *Cancer Immunol Immunother* 2015; 64(7): 853–860
244. Ward FJ, Dahal LN, Wijesekera SK, Abdul-Jawad SK, Kaewarpai T, Xu H, Vickers MA, Barker RN. The soluble isoform of CTLA-4 as a regulator of T-cell responses. *Eur J Immunol* 2013; 43(5): 1274–1285
245. Laurent S, Queirolo P, Boero S, Salvi S, Piccioli P, Boccardo S, Minghelli S, Morabito A, Fontana V, Pietra G, Carrega P, Ferrari N, Tosetti F, Chang LJ, Mingari MC, Ferlazzo G, Poggi A, Pistillo MP. The engagement of CTLA-4 on primary melanoma cell lines induces antibody-dependent cellular cytotoxicity and TNF- $\alpha$  production. *J Transl Med* 2013; 11(1): 108
246. Vonderheide RH, LoRusso PM, Khalil M, Gartner EM, Khaira D, Soulieres D, Dorazio P, Trosko JA, Rüter J, Mariani GL, Usari T, Domchek SM. Tremelimumab in combination with exemestane in patients with advanced breast cancer and treatment-associated modulation of inducible costimulator expression on patient T cells. *Clin Cancer Res* 2010; 16(13): 3485–3494
247. McArthur HL, Diab A, Page DB, Yuan J, Solomon SB, Sacchini V, Comstock C, Durack JC, Maybody M, Sung J, Ginsberg A, Wong P, Barlas A, Dong Z, Zhao C, Blum B, Patil S, Neville D, Comen EA, Morris EA, Kotin A, Brogi E, Wen YH, Morrow M, Lacouture ME, Sharma P, Allison JP, Hudis CA, Wolchok JD, Norton L. A pilot study of preoperative single-dose ipilimumab and/or cryoablation in women with early-stage breast cancer with comprehensive immune profiling. *Clin Cancer Res* 2016; 22(23): 5653–5663

- 5729–5737
248. Fife BT, Bluestone JA. Control of peripheral T-cell tolerance and autoimmunity via the CTLA-4 and PD-1 pathways. *Immunol Rev* 2008; 224(1): 166–182
249. Butte MJ, Keir ME, Phamduy TB, Sharpe AH, Freeman GJ. Programmed death-1 ligand 1 interacts specifically with the B7-1 costimulatory molecule to inhibit T cell responses. *Immunity* 2007; 27(1): 111–122
250. Freeman GJ, Long AJ, Iwai Y, Bourque K, Chernova T, Nishimura H, Fitz LJ, Malenkovich N, Okazaki T, Byrne MC, Horton HF, Fouser L, Carter L, Ling V, Bowman MR, Carreno BM, Collins M, Wood CR, Honjo T. Engagement of the PD-1 immunoinhibitory receptor by a novel B7 family member leads to negative regulation of lymphocyte activation. *J Exp Med* 2000; 192(7): 1027–1034
251. Topalian SL, Drake CG, Pardoll DM. Targeting the PD-1/B7-H1 (PD-L1) pathway to activate anti-tumor immunity. *Curr Opin Immunol* 2012; 24(2): 207–212
252. Ribas A. Tumor immunotherapy directed at PD-1. *N Engl J Med* 2012; 366(26): 2517–2519
253. Sabatier R, Finetti P, Mamessier E, Adelaide J, Chaffanet M, Ali HR, Viens P, Caldas C, Birnbaum D, Bertucci F. Prognostic and predictive value of PDL1 expression in breast cancer. *Oncotarget* 2015; 6(7): 5449–5464
254. Chang LC, Chen TP, Kuo WK, Hua CC. The protein expression of PDL1 is highly correlated with those of eIF2 $\alpha$  and ATF4 in lung cancer. *Dis Markers* 2018; 2018: 5068701
255. Chen J, Jiang CC, Jin L, Zhang XD. Regulation of PD-L1: a novel role of pro-survival signalling in cancer. *Ann Oncol* 2016; 27(3): 409–416
256. Sharpe AH, Wherry EJ, Ahmed R, Freeman GJ. The function of programmed cell death 1 and its ligands in regulating autoimmunity and infection. *Nat Immunol* 2007; 8(3): 239–245
257. Shi T, Ma Y, Yu L, Jiang J, Shen S, Hou Y, Wang T. Cancer immunotherapy: a focus on the regulation of immune checkpoints. *Int J Mol Sci* 2018; 19(5): E1389
258. Bedognetti D, Hendrickx W, Marincola FM, Miller LD. Prognostic and predictive immune gene signatures in breast cancer. *Curr Opin Oncol* 2015; 27(6): 433–444
259. Bedognetti D, Maccalli C, Bader SB, Marincola FM, Seliger B. Checkpoint inhibitors and their application in breast cancer. *Breast Care (Basel)* 2016; 11(2): 108–115
260. Planes-Laine G, Rochigneux P, Bertucci F, Chrétien AS, Viens P, Sabatier R, Gonçalves A. PD-1/PD-L1 targeting in breast cancer: the first clinical evidences are emerging. a literature review. *Cancers (Basel)* 2019; 11(7): E1033
261. Larkin J, Chiarion-Sileni V, Gonzalez R, Grob JJ, Cowey CL, Lao CD, Schadendorf D, Dummer R, Smylie M, Rutkowski P, Ferrucci PF, Hill A, Wagstaff J, Carlino MS, Haanen JB, Maio M, Marquez-Rodas I, McArthur GA, Ascierto PA, Long GV, Callahan MK, Postow MA, Grossmann K, Sznol M, Dreno B, Bastholt L, Yang A, Rollin LM, Horak C, Hodi FS, Wolchok JD. Combined nivolumab and ipilimumab or monotherapy in untreated melanoma. *N Engl J Med* 2015; 373(1): 23–34
262. Blackley EF, Loi S. Targeting immune pathways in breast cancer: review of the prognostic utility of TILs in early stage triple negative breast cancer (TNBC). *Breast* 2019; 48(Suppl 1): S44–S48
263. DeNardo DG, Coussens LM. Inflammation and breast cancer. Balancing immune response: crosstalk between adaptive and innate immune cells during breast cancer progression. *Breast Cancer Res* 2007; 9(4): 212
264. Ruffell B, Au A, Rugo HS, Esserman LJ, Hwang ES, Coussens LM. Leukocyte composition of human breast cancer. *Proc Natl Acad Sci USA* 2012; 109(8): 2796–2801
265. Chin Y, Janseens J, Vandepitte J, Vandenbrande J, Opdebeek L, Raus J. Phenotypic analysis of tumor-infiltrating lymphocytes from human breast cancer. *Anticancer Res* 1992; 12(5): 1463–1466
266. Stanton SE, Disis ML. Clinical significance of tumor-infiltrating lymphocytes in breast cancer. *J Immunother Cancer* 2016; 4(1): 59
267. Kurozumi S, Inoue K, Matsumoto H, Fujii T, Horiguchi J, Oyama T, Kurosumi M, Shirabe K. Prognostic utility of tumor-infiltrating lymphocytes in residual tumor after neoadjuvant chemotherapy with trastuzumab for HER2-positive breast cancer. *Sci Rep* 2019; 9(1): 1583
268. Aaltomaa S, Lipponen P, Eskelinen M, Kosma VM, Marin S, Alhava E, Syrjänen K. Lymphocyte infiltrates as a prognostic variable in female breast cancer. *Eur J Cancer* 1992; 28(4–5): 859–864
269. Vikas P, Borcherding N, Zhang W. The clinical promise of immunotherapy in triple-negative breast cancer. *Cancer Manag Res* 2018; 10: 6823–6833
270. Galluzzi L, Senovilla L, Zitvogel L, Kroemer G. The secret ally: immunostimulation by anticancer drugs. *Nat Rev Drug Discov* 2012; 11(3): 215–233
271. Stanton SE, Adams S, Disis ML. Variation in the incidence and magnitude of tumor-infiltrating lymphocytes in breast cancer subtypes: a systematic review. *JAMA Oncol* 2016; 2(10): 1354–1360
272. Dieci MV, Mathieu MC, Guarneri V, Conte P, Delaloue S, Andre F, Goubar A. Prognostic and predictive value of tumor-infiltrating lymphocytes in two phase III randomized adjuvant breast cancer trials. *Ann Oncol* 2015; 26(8): 1698–1704
273. Adams S, Gray RJ, Demaria S, Goldstein L, Perez EA, Shulman LN, Martino S, Wang M, Jones VE, Saphner TJ, Wolff AC, Wood WC, Davidson NE, Sledge GW, Sparano JA, Badve SS. Prognostic value of tumor-infiltrating lymphocytes in triple-negative breast cancers from two phase III randomized adjuvant breast cancer trials: ECOG 2197 and ECOG 1199. *J Clin Oncol* 2014; 32(27): 2959–2966
274. Zhang L, Wang XI, Ding J, Sun Q, Zhang S. The predictive and prognostic value of Foxp3<sup>+</sup>/CD25<sup>+</sup> regulatory T cells and PD-L1 expression in triple negative breast cancer. *Ann Diagn Pathol* 2019; 40: 143–151
275. Luen SJ, Salgado R, Dieci MV, Vingiani A, Curigliano G, Gould RE, Castaneda C, D'Alfonso T, Sanchez J, Cheng E, Andreopoulou E, Castillo M, Adams S, Demaria S, Symmans WF, Michiels S, Loi S. Prognostic implications of residual disease tumor-infiltrating lymphocytes and residual cancer burden in triple-negative breast cancer patients after neoadjuvant chemotherapy. *Ann Oncol* 2019; 30(2): 236–242
276. Criscitiello C. Tumor-associated antigens in breast cancer. *Breast Care (Basel)* 2012; 7(4): 262–266
277. Huber CH, Wölfel T. Immunotherapy of cancer: from vision to standard clinical practice. *J Cancer Res Clin Oncol* 2004; 130(7):

- 367–374
278. Dols A, Smith JW 2nd, Meijer SL, Fox BA, Hu HM, Walker E, Rosenheim S, Moudgil T, Doran T, Wood W, Seligman M, Alvord WG, Schoof D, Urba WJ. Vaccination of women with metastatic breast cancer, using a costimulatory gene (CD80)-modified, HLA-A2-matched, allogeneic, breast cancer cell line: clinical and immunological results. *Hum Gene Ther* 2003; 14(11): 1117–1123
  279. Cibotti R, Kanellopoulos JM, Cabaniols JP, Halle-Panenko O, Kosmatopoulos K, Sercarz E, Kourilsky P. Tolerance to a self-protein involves its immunodominant but does not involve its subdominant determinants. *Proc Natl Acad Sci USA* 1992; 89(1): 416–420
  280. Shumway NM, Ibrahim N, Ponniah S, Peoples GE, Murray JL. Therapeutic breast cancer vaccines: a new strategy for early-stage disease. *BioDrugs* 2009; 23(5): 277–287
  281. Park JW, Melisko ME, Esserman LJ, Jones LA, Wollan JB, Sims R. Treatment with autologous antigen-presenting cells activated with the HER-2 based antigen Lapuleucel-T: results of a phase I study in immunologic and clinical activity in HER-2 over-expressing breast cancer. *J Clin Oncol* 2007; 25(24): 3680–3687
  282. Banchereau J, Palucka AK. Dendritic cells as therapeutic vaccines against cancer. *Nat Rev Immunol* 2005; 5(4): 296–306
  283. Ladjemi MZ, Jacot W, Chardès T, Pèlerin A, Navarro-Teulon I. Anti-HER2 vaccines: new prospects for breast cancer therapy. *Cancer Immunol Immunother* 2010; 59(9): 1295–1312
  284. Cannon MJ, Block MS, Morehead LC, Knutson KL. The evolving clinical landscape for dendritic cell vaccines and cancer immunotherapy. *Immunotherapy* 2019; 11(2): 75–79
  285. Saxena M, Balan S, Roudko V, Bhardwaj N. Towards superior dendritic-cell vaccines for cancer therapy. *Nat Biomed Eng* 2018; 2(6): 341–346
  286. Eagles ME, Nassiri F, Badhiwala JH, Suppiah S, Almenawer SA, Zadeh G, Aldape KD. Dendritic cell vaccines for high-grade gliomas. *Ther Clin Risk Manag* 2018; 14: 1299–1313
  287. Sakai Y, Morrison BJ, Burke JD, Park JM, Terabe M, Janik JE, Forni G, Berzofsky JA, Morris JC. Vaccination by genetically modified dendritic cells expressing a truncated neu oncogene prevents development of breast cancer in transgenic mice. *Cancer Res* 2004; 64(21): 8022–8028
  288. Peoples GE, Goedegebuure PS, Smith R, Linehan DC, Yoshino I, Eberlein TJ. Breast and ovarian cancer-specific cytotoxic T lymphocytes recognize the same HER2/neu-derived peptide. *Proc Natl Acad Sci USA* 1995; 92(2): 432–436
  289. Al-Awadhi A, Lee Murray J, Ibrahim NK. Developing anti-HER2 vaccines: breast cancer experience. *Int J Cancer* 2018; 143(9): 2126–2132
  290. Marshall JL, Hoyer RJ, Toomey MA, Faraguna K, Chang P, Richmond E, Pedicano JE, Gehan E, Peck RA, Arlen P, Tsang KY, Schlom J. Phase I study in advanced cancer patients of a diversified prime-and-boost vaccination protocol using recombinant vaccinia virus and recombinant nonreplicating avipox virus to elicit anti-carcinoembryonic antigen immune responses. *J Clin Oncol* 2000; 18(23): 3964–3973
  291. Rosenberg SA, Zhai Y, Yang JC, Schwartzentruber DJ, Hwu P, Marincola FM, Topalian SL, Restifo NP, Seipp CA, Einhorn JH, Roberts B, White DE. Immunizing patients with metastatic melanoma using recombinant adenoviruses encoding MART-1 or gp100 melanoma antigens. *J Natl Cancer Inst* 1998; 90(24): 1894–1900
  292. Yang B, Jeang J, Yang A, Wu TC, Hung CF. DNA vaccine for cancer immunotherapy. *Hum Vaccin Immunother* 2014; 10(11): 3153–3164
  293. Norell H, Poschke I, Charo J, Wei WZ, Erskine C, Piechocki MP, Knutson KL, Bergh J, Lidbrink E, Kiessling R. Vaccination with a plasmid DNA encoding HER-2/neu together with low doses of GM-CSF and IL-2 in patients with metastatic breast carcinoma: a pilot clinical trial. *J Transl Med* 2010; 8(1): 53
  294. Chae YC, Kim JH. Cancer stem cell metabolism: target for cancer therapy. *BMB Rep* 2018; 51(7): 319–326
  295. Louhichi T, Ziadi S, Saad H, Dhiab MB, Mestiri S, Trimeche M. Clinicopathological significance of cancer stem cell markers CD44 and ALDH1 expression in breast cancer. *Breast Cancer* 2018; 25(6): 698–705
  296. Tamada M, Nagano O, Tateyama S, Ohmura M, Yae T, Ishimoto T, Sugihara E, Onishi N, Yamamoto T, Yanagawa H, Suematsu M, Saya H. Modulation of glucose metabolism by CD44 contributes to antioxidant status and drug resistance in cancer cells. *Cancer Res* 2012; 72(6): 1438–1448
  297. Liu PP, Liao J, Tang ZJ, Wu WJ, Yang J, Zeng ZL, Hu Y, Wang P, Ju HQ, Xu RH, Huang P. Metabolic regulation of cancer cell side population by glucose through activation of the Akt pathway. *Cell Death Differ* 2014; 21(1): 124–135
  298. Viale A, Pettazzoni P, Lyssiotis CA, Ying H, Sánchez N, Marchesini M, Carugo A, Green T, Seth S, Giuliani V, Kost-Alimova M, Muller F, Colla S, Nezi L, Genovese G, Deem AK, Kapoor A, Yao W, Brunetto E, Kang Y, Yuan M, Asara JM, Wang YA, Heffernan TP, Kimmelman AC, Wang H, Fleming JB, Cantley LC, DePinho RA, Draetta GF. Oncogene ablation-resistant pancreatic cancer cells depend on mitochondrial function. *Nature* 2014; 514(7524): 628–632
  299. Gao C, Shen Y, Jin F, Miao Y, Qiu X. Cancer stem cells in small cell lung cancer cell line H446: higher dependency on oxidative phosphorylation and mitochondrial substrate-level phosphorylation than non-stem cancer cells. *PLoS One* 2016; 11(5): e0154576
  300. Lee KM, Giltnane JM, Balko JM, Schwarz LJ, Guerrero-Zotano AL, Hutchinson KE, Nixon MJ, Estrada MV, Sanchez V, Sanders ME, Lee T, Gomez H, Lluch A, Perez-Fidalgo J A, Wolf MM, Andrejeva G, Rathmell J C, Fesik S W, Arteaga CL. MYC and MCL1 cooperatively promote chemotherapy-resistant breast cancer stem cells via regulation of mitochondrial oxidative phosphorylation. *Cell Metab* 2017; 26(4): 633–647.e7
  301. Tirinato L, Liberale C, Di Franco S, Candeloro P, Benfante A, La Rocca R, Potze L, Marotta R, Ruffilli R, Rajamanickam VP, Malerba M, De Angelis F, Falqui A, Carbone E, Todaro M, Medema JP, Stassi G, Di Fabrizio E. Lipid droplets: a new player in colorectal cancer stem cells unveiled by spectroscopic imaging. *Stem Cells* 2015; 33(1): 35–44
  302. Wang T, Fahrman J F, Lee H, Li Y J, Tripathi S C, Yue C, Zhang C, Lifshitz V, Song J, Yuan Y, Somlo G, Jandial R, Ann D, Hanash S, Jove R, Yu H. JAK/STAT3-regulated fatty acid beta-oxidation is critical for breast cancer stem cell self-renewal and chemoresistance. *Cell Metab* 2018; 27(1): 136–150.e5
  303. Wu A, Wei J, Kong LY, Wang Y, Priebe W, Qiao W, Sawaya R, Heimbeger AB. Glioma cancer stem cells induce immunosup-

- pressive macrophages/microglia. *Neuro-oncol* 2010; 12(11): 1113–1125
304. Mitchem JB, Brennan DJ, Knolhoff BL, Belt BA, Zhu Y, Sanford DE, Belaygorod L, Carpenter D, Collins L, Piwnica-Worms D, Hewitt S, Udupi GM, Gallagher WM, Wegner C, West BL, Wang-Gillam A, Goedegebuure P, Linehan DC, DeNardo DG. Targeting tumor-infiltrating macrophages decreases tumor-initiating cells, relieves immunosuppression, and improves chemotherapeutic responses. *Cancer Res* 2013; 73(3): 1128–1141
305. Bottino C, Castriconi R, Moretta L, Moretta A. Cellular ligands of activating NK receptors. *Trends Immunol* 2005; 26(4): 221–226
306. Di Tomaso T, Mazzoleni S, Wang E, Soveni G, Clavenna D, Franzin A, Mortini P, Ferrone S, Doglioni C, Marincola FM, Galli R, Parmiani G, Maccalli C. Immunobiological characterization of cancer stem cells isolated from glioblastoma patients. *Clin Cancer Res* 2010; 16(3): 800–813
307. Silver DJ, Sinyuk M, Vogelbaum MA, Ahluwalia MS, Lathia JD. The intersection of cancer, cancer stem cells, and the immune system: therapeutic opportunities. *Neuro-oncol* 2016; 18(2): 153–159
308. Almozyan S, Colak D, Mansour F, Alaiya A, Al-Harazi O, Qattan A, Al-Mohanna F, Al-Alwan M, Ghebeh H. PD-L1 promotes OCT4 and Nanog expression in breast cancer stem cells by sustaining PI3K/AKT pathway activation. *Int J Cancer* 2017; 141(7): 1402–1412
309. Biswas SK. Metabolic reprogramming of immune cells in cancer progression. *Immunity* 2015; 43(3): 435–449
310. Zhu L, Zhao Q, Yang T, Ding W, Zhao Y. Cellular metabolism and macrophage functional polarization. *Int Rev Immunol* 2015; 34(1): 82–100
311. Ho PC, Liu PS. Metabolic communication in tumors: a new layer of immunoregulation for immune evasion. *J Immunother Cancer* 2016; 4(1): 4
312. Casazza A, Laoui D, Wenes M, Rizzolio S, Bassani N, Mambretti M, Deschoemaeker S, Van Ginderachter JA, Tamagnone L, Mazzone M. Impeding macrophage entry into hypoxic tumor areas by *Sema3A/Nrp1* signaling blockade inhibits angiogenesis and restores antitumor immunity. *Cancer Cell* 2013; 24(6): 695–709
313. Burke B, Giannoudis A, Corke KP, Gill D, Wells M, Ziegler-Heitbrock L, Lewis CE. Hypoxia-induced gene expression in human macrophages: implications for ischemic tissues and hypoxia-regulated gene therapy. *Am J Pathol* 2003; 163(4): 1233–1243
314. Cramer T, Yamanishi Y, Clausen BE, Förster I, Pawlinski R, Mackman N, Haase VH, Jaenisch R, Corr M, Nizet V, Firestein GS, Gerber HP, Ferrara N, Johnson RS. HIF-1 $\alpha$  is essential for myeloid cell-mediated inflammation. *Cell* 2003; 112(5): 645–657
315. Colegio OR, Chu NQ, Szabo AL, Chu T, Rhebergen AM, Jairam V, Cyrus N, Brokowski CE, Eisenbarth SC, Phillips GM, Cline GW, Phillips AJ, Medzhitov R. Functional polarization of tumour-associated macrophages by tumour-derived lactic acid. *Nature* 2014; 513(7519): 559–563
316. Cassim S, Pouyssegur J. Tumor microenvironment: a metabolic player that shapes the immune response. *Int J Mol Sci* 2019; 21(1): E157
317. Zhang W, Wang G, Xu ZG, Tu H, Hu F, Dai J, Chang Y, Chen Y, Lu Y, Zeng H, Cai Z, Han F, Xu C, Jin G, Sun L, Pan BS, Lai S W, Hsu CC, Xu J, Chen ZZ, Li HY, Seth P, Hu J, Zhang X, Li H, Lin HK. Lactate is a natural suppressor of RLR signaling by targeting MAVS. *Cell* 2019; 178(1): 176–189.e15
318. Chang CH, Curtis JD, Maggi LB Jr, Faubert B, Villarino AV, O’Sullivan D, Huang SC, van der Windt GJ, Blagih J, Qiu J, Weber JD, Pearce EJ, Jones RG, Pearce EL. Posttranscriptional control of T cell effector function by aerobic glycolysis. *Cell* 2013; 153(6): 1239–1251
319. Blagih J, Coulombe F, Vincent EE, Dupuy F, Galicia-Vázquez G, Yurchenko E, Raissi TC, van der Windt GJ, Viollet B, Pearce EL, Pelletier J, Piccirillo CA, Krawczyk CM, Divangahi M, Jones RG. The energy sensor AMPK regulates T cell metabolic adaptation and effector responses *in vivo*. *Immunity* 2015; 42(1): 41–54
320. Michalek RD, Gerriets VA, Jacobs SR, Macintyre AN, MacIver NJ, Mason EF, Sullivan SA, Nichols AG, Rathmell JC. Cutting edge: distinct glycolytic and lipid oxidative metabolic programs are essential for effector and regulatory CD4<sup>+</sup> T cell subsets. *J Immunol* 2011; 186(6): 3299–3303
321. Siska PJ, Rathmell JC. T cell metabolic fitness in antitumor immunity. *Trends Immunol* 2015; 36(4): 257–264
322. Noman MZ, Desantis G, Janji B, Hasmim M, Karray S, Dessen P, Bronte V, Chouaib S. PD-L1 is a novel direct target of HIF-1 $\alpha$ , and its blockade under hypoxia enhanced MDSC-mediated T cell activation. *J Exp Med* 2014; 211(5): 781–790
323. Frauwirth KA, Riley JL, Harris MH, Parry RV, Rathmell JC, Plas DR, Elstrom RL, June CH, Thompson CB. The CD28 signaling pathway regulates glucose metabolism. *Immunity* 2002; 16(6): 769–777
324. Patsoukis N, Bardhan K, Chatterjee P, Sari D, Liu B, Bell LN, Karoly ED, Freeman GJ, Petkova V, Seth P, Li L, Boussiotis VA. PD-1 alters T-cell metabolic reprogramming by inhibiting glycolysis and promoting lipolysis and fatty acid oxidation. *Nat Commun* 2015; 6(1): 6692
325. Chang CH, Qiu J, O’Sullivan D, Buck MD, Noguchi T, Curtis JD, Chen Q, Gindin M, Gubin MM, van der Windt GJ, Tonc E, Schreiber RD, Pearce EJ, Pearce EL. Metabolic competition in the tumor microenvironment is a driver of cancer progression. *Cell* 2015; 162(6): 1229–1241
326. Saleh R, Taha RZ, Sasidharan Nair V, Alajez NM, Elkord E. PD-L1 blockade by atezolizumab downregulates signaling pathways associated with tumor growth, metastasis, and hypoxia in human triple negative breast cancer. *Cancers (Basel)* 2019; 11(8): E1050
327. Lim S, Liu H, Madeira da Silva L, Arora R, Liu Z, Phillips JB, Schmitt DC, Vu T, McClellan S, Lin Y, Lin W, Piazza GA, Fodstad O, Tan M. Immunoregulatory protein B7-H3 reprograms glucose metabolism in cancer cells by ROS-mediated stabilization of HIF1 $\alpha$ . *Cancer Res* 2016; 76(8): 2231–2242
328. Franchina DG, He F, Brenner D. Survival of the fittest: cancer challenges T cell metabolism. *Cancer Lett* 2018; 412: 216–223
329. Vazquez-Martin A, Oliveras-Ferreros C, Menendez JA. The antidiabetic drug metformin suppresses HER2 (erbB-2) oncoprotein overexpression via inhibition of the mTOR effector p70S6K1 in human breast carcinoma cells. *Cell Cycle* 2009; 8(1): 88–96
330. Zakikhani M, Blouin MJ, Piura E, Pollak MN. Metformin and rapamycin have distinct effects on the AKT pathway and proliferation in breast cancer cells. *Breast Cancer Res Treat*



- 2010; 123(1): 271–279
331. Zhou X, Chen J, Yi G, Deng M, Liu H, Liang M, Shi B, Fu X, Chen Y, Chen L, He Z, Wang J, Liu J. Metformin suppresses hypoxia-induced stabilization of HIF-1 $\alpha$  through reprogramming of oxygen metabolism in hepatocellular carcinoma. *Oncotarget* 2016; 7(1): 873–884
332. Xue J, Li L, Li N, Li F, Qin X, Li T, Liu M. Metformin suppresses cancer cell growth in endometrial carcinoma by inhibiting PD-L1. *Eur J Pharmacol* 2019; 859: 172541
333. Cha JH, Yang WH, Xia W, Wei Y, Chan LC, Lim SO, Li CW, Kim T, Chang SS, Lee HH, Hsu JL, Wang HL, Kuo CW, Chang WC, Hadad S, Purdie CA, McCoy AM, Cai S, Tu Y, Litton JK, Mittendorf EA, Moulder SL, Symmans WF, Thompson AM, Piwnica-Worms H, Chen CH, Khoo KH, Hung MC. Metformin promotes antitumor immunity via endoplasmic-reticulum-associated degradation of PD-L1. *Mol Cell* 2018; 71(4): 606–620.e7