

# A Patient-Centered Primary Care Practice Approach Using Evidence-Based Quality Improvement: Rationale, Methods, and Early Assessment of Implementation

Lisa V. Rubenstein, MD, MSPH<sup>1,2,3,4,9,10</sup>, Susan E. Stockdale, PhD<sup>1,2</sup>, Negar Sapir, MPH<sup>1</sup>, Lisa Altman, MD<sup>1,2,4</sup>, Timothy Dresselhaus, MD, MPH<sup>5,6</sup>, Susanne Salem-Schatz, ScD<sup>7</sup>, Susan Vivell, PhD, MBA<sup>1</sup>, John Ovretveit, PhD<sup>8</sup>, Alison B. Hamilton, PhD, MPH<sup>1,2</sup>, and Elizabeth M. Yano, PhD, MSPH<sup>1,9</sup>

<sup>1</sup>VA HSR&D Center for the Study of Healthcare Innovation, Implementation, and Policy, VA Greater Los Angeles Healthcare System, North Hills, CA, USA; <sup>2</sup>David Geffen School of Medicine, University of California, Los Angeles, Los Angeles, CA, USA; <sup>3</sup>RAND Corporation, Santa Monica, CA, USA; <sup>4</sup>Department of Medicine, VA Greater Los Angeles Healthcare System, Los Angeles, CA, USA; <sup>5</sup>VA San Diego Healthcare System, San Diego, CA, USA; <sup>6</sup>Department of Medicine, University of California, San Diego, San Diego, CA, USA; <sup>7</sup>Health Care Quality Initiatives, Newton, MA, USA; <sup>8</sup>The Karolinska Institutet, Stockholm, Sweden; <sup>9</sup>Department of Health Policy and Management, UCLA Fielding School of Public Health, Los Angeles, CA, USA; <sup>10</sup>VA QUERI Center for Implementation Practice and Research Support, Los Angeles, CA, USA

**BACKGROUND:** Healthcare systems and their primary care practices are redesigning to achieve goals identified in Patient-Centered Medical Home (PCMH) models such as Veterans Affairs (VA)'s Patient Aligned Care Teams (PACT). Implementation of these models, however, requires major transformation. Evidence-Based Quality Improvement (EBQI) is a multi-level approach for supporting organizational change and innovation spread.

**OBJECTIVE:** To describe EBQI as an approach for promoting VA's PACT and to assess initial implementation of planned EBQI elements.

**DESIGN:** Descriptive.

**PARTICIPANTS:** Regional and local interdisciplinary clinical leaders, patient representatives, Quality Council Coordinators, practicing primary care clinicians and staff, and researchers from six demonstration site practices in three local healthcare systems in one VA region.

**INTERVENTION:** EBQI promotes bottom-up local innovation and spread within top-down organizational priorities. EBQI innovations are supported by a research-clinical partnership, use continuous quality improvement methods, and are developed in regional demonstration sites.

**APPROACH:** We developed a logic model for EBQI for PACT (EBQI-PACT) with inputs, outputs, and expected outcomes. We describe implementation of logic model outputs over 18 months, using qualitative data from 84 key stakeholders (104 interviews from two waves) and review of study documents.

**RESULTS:** Nearly all implementation elements of the EBQI-PACT logic model were fully or partially implemented. Elements not fully achieved included patient

engagement in Quality Councils (4/6) and consistent local primary care practice interdisciplinary leadership (4/6). Fourteen of 15 regionally approved innovation projects have been completed, three have undergone initial spread, five are prepared to spread, and two have completed toolkits that have been pretested in two to three sites and are now ready for external spread.

**DISCUSSION:** EBQI-PACT has been feasible to implement in three participating healthcare systems in one VA region. Further development of methods for engaging patients in care design and for promoting interdisciplinary leadership is needed.

**KEY WORDS:** quality improvement; primary care; patient-centered medical home; logic model; interdisciplinary leadership.

J Gen Intern Med 29(Suppl 2):S589-97

DOI: 10.1007/s11606-013-2703-y

© The Author(s) 2013. This article is published with open access at Springerlink.com

## INTRODUCTION

The Patient-Centered Medical Home (PCMH) is a broadly endorsed set of general principles for aligning care delivered in primary care (PC) settings with the needs and preferences of the patient populations served. The model, however, has proven challenging to implement, even in highly motivated practices.<sup>1</sup> Prior work shows that the PC practices most successful in achieving PCMH goals have an internal capability for organizational learning and development.<sup>2</sup> Promoting front line quality improvement skills and innovation in PC settings within the context of PCMH goals has, in turn, the potential to enhance ongoing organizational learning. There are few empirical studies, however, testing systematic methods for promoting a learning and improvement culture for PCMH.

---

**Electronic supplementary material** The online version of this article (doi:10.1007/s11606-013-2703-y) contains supplementary material, which is available to authorized users.

---

Published online April 9, 2014

The Veterans Affairs (VA) system used PCMH principles as the basis for its patient-centered care model, termed “Patient Aligned Care Teams” (PACT). Nationally mandated PACT implementation began in 2010.<sup>3</sup> Simultaneously, VA established demonstration projects to support PACT implementation through innovation and evaluation.<sup>3</sup> We report here on the logic model, methods, and early implementation of a demonstration project to test Evidence-Based Quality Improvement (EBQI)<sup>4–7</sup> as a method for developing and spreading a culture of quality improvement in primary care settings within one large VA region.

Centrally driven initiatives can founder on challenges faced by local sites in trying to implement them.<sup>8</sup> Achieving mandated PACT goals such as interdisciplinary continuity of care for patient panels, new scheduling methods, and improved care transitions requires substantial local redesign.<sup>8</sup> Prior literature on non-VA PCMH shows that model implementation is transformative, requiring multi-dimensional changes<sup>9</sup> that continuously adapt to local context.<sup>10</sup> We thus expected that implementation of PACT would necessitate an ongoing local quality improvement (QI) process, in addition to top-down mandates and education.<sup>11</sup> Local QI innovation, however, can be both idiosyncratic<sup>12,13</sup> and expensive.<sup>14</sup>

EBQI, tested over the past two decades within and outside VA,<sup>4–6</sup> is a multilevel approach that has the potential to focus and empower local QI innovation. The approach integrates system-level and region-level improvement priorities<sup>15</sup> with locally driven, bottom-up, evidence-based problem-solving that is supported by embedded health services researchers. By doing so, EBQI aims to promote both evidence-enriched local innovation and a culture in which local problem-solving is the norm.<sup>16,17</sup>

We adapted EBQI based on the particulars of the PCMH model, and termed our resulting approach EBQI-PACT. Compared to prior EBQI,<sup>4–7</sup> EBQI-PACT more specifically emphasizes interdisciplinary practice leadership, patients as stakeholders, and methods for spreading innovations. This paper uses QI and qualitative methods to describe 1) the evidence, theories, and context that shaped the EBQI-PACT intervention; 2) the resulting project logic model; and 3) early implementation of program components across six demonstration primary care practices in one VA region (June 2010 to December 2012).

## METHODS

### Setting

The VA has a national central office, 21 administrative regions (termed Veterans Integrated Service Networks or VISNs), and local healthcare systems (HCSs, often called

medical centers) within each region that in turn directly administer local primary care (PC) practices of varying size and complexity. The demonstration project reported here is the “Veterans Assessment and Improvement Laboratory for Patient-Centered Care” (VAIL-PCC, or VAIL), funded by the VA Office of Patient Care Services. VAIL is based within VISN 22, a region with five local HCSs, three of which participate in VAIL and administer 23 of the 35 total PC practices in the region. Each participating system chose one demonstration practice in year one (2010) and one additional practice in year two (2011), for a total of six. VAIL specified that any VA-staffed PC practice serving 7,000–15,000 veterans and willing to participate in QI was eligible.

EBQI-PACT is the core intervention sponsored by VAIL. VAIL additionally supports a separate four-year summative evaluation led by an organizational epidemiologist (EY) not yet concluded and not reported here. Figure 1 overviews the EBQI-PACT intervention and time line.

### Participants

VAIL involves over 200 direct participants in its activities, including regional, HCS, and local clinical leaders; patient representatives; Quality Council Coordinators; practicing PC clinicians and staff; and researchers. The researchers supporting EBQI-PACT intervention activities at least part-time include a PC MD (LR), a PhD sociologist (SES), a project manager (NS), a VA information systems specialist (SV), a programmer, a communications lead, two evidence review leads, two human subjects leads who are also survey experts, and several staff.

### Theoretical Basis for EBQI-PACT Intervention Features

The research team, with input from PC leads from each participating health system and a redesign expert based at regional headquarters, reviewed evidence from literature searches<sup>18</sup> and consulted with experts to develop the rationale for the EBQI-PACT intervention in 2009–2010, prior to project funding. In Table 1, Column A shows challenges identified through PCMH literature. Column B shows relevant theories underlying EBQI. Column C shows related key EBQI-PACT features we expected to implement based on challenges and theories.

Based on the theories and features, interviews with intervention and evaluation leaders (EY, LR, SS), and group discussions with the full research team, one of the authors (SSS) developed a first draft logic model (Appendix 1, available online). The final logic model, completed after field testing, reflects agreement among the authors on an abbreviated version.

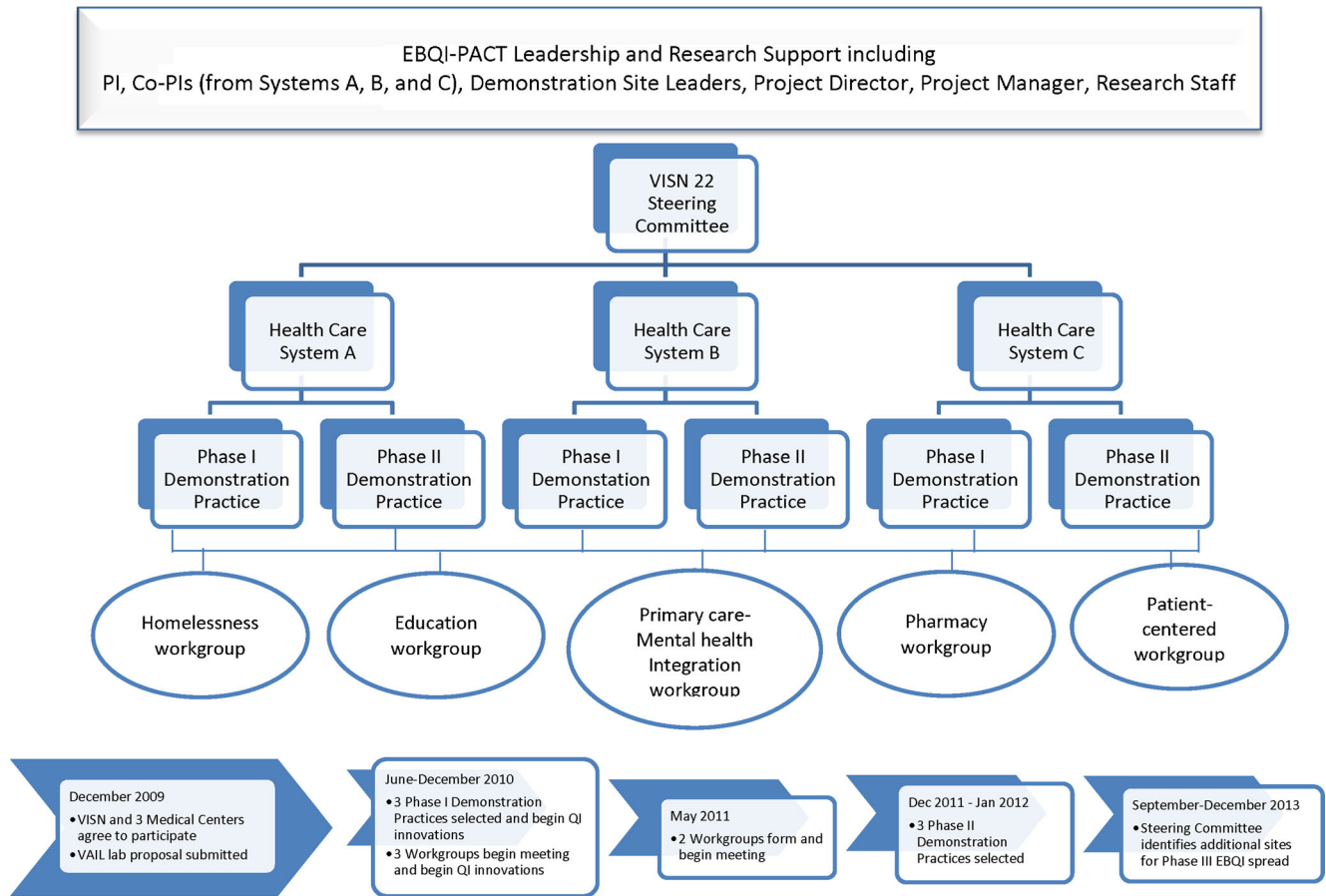


Figure 1. Organizational chart and time line for VAIL EBQI-PACT intervention.

**Evaluation of Implementation of EBQI-PACT**

We used data from 104 qualitative key stakeholder interviews and from study records to assess fidelity to intended EBQI-PACT logic model elements between June 2010 and December 2012. The 30–60 min interviews were conducted in two waves with 84 VAIL participants (first wave interviews October 2011–July 2012, second wave interviews September 2012–March 2013). Trained qualitative researchers conducted the interviews, which covered predefined domains, and were audio-recorded and professionally transcribed. Approximately 80 % of invited stakeholders participated (first wave: 58/75; second wave: 46/54). The number of key stakeholders interviewed per HCS varied based on HCS size and leadership structure (ranging from 11 at the smallest to 22 at the largest).

Using a template based on interview domains, the qualitative interview team (SES, AH and others) generated brief summaries of each interview transcript. The team lead (AH) then developed a matrix to examine content in each domain (x-axis) by participant (y-axis).<sup>19</sup> Domains most relevant to EBQI-PACT implementation included VAIL awareness/familiarity, implementation of and participation in VAIL QI infrastructure (Quality Councils, Steering Committee, Workgroups), and experiences with local QI innovation

projects at demonstration practices. To assess specific EBQI initiation and end dates, the core intervention team (SES, NS, LR) reviewed emails, meeting minutes, and quarterly reports.

Based on document review and matrix analysis, SES, NS, LR and AH developed a consensus rating for each logic model output (i.e., organizational structure or activity). Differences of opinion led to re-review of relevant data. Ratings were Met (implementation of this activity was complete at all demonstration sites), Partially Met (implementation was complete at some sites or partially complete at all sites), or Not Met (implementation was not complete at any site).

**RESULTS**

**The EBQI-PACT Logic Model**

Figure 2 shows the final EBQI-PACT logic model.<sup>20</sup> Inputs identify important pre-existing elements (people, framework, resources) that influence the conduct and outcomes of a project. Outputs identify what the intervention does to achieve its goals (i.e., program components implemented). Outcomes show what the outputs aim to achieve. Qualitative interviews

Table 1. Theoretical Basis for EBQI-PACT Intervention Features

A. Primary care improvement challenges	B. Relevant theoretical basis for intervention development	C. Relevant intervention features
"Becoming a PCMH requires transformation, not incremental change" <sup>9</sup>	<ul style="list-style-type: none"> <li>• Leadership commitment<sup>29-31</sup></li> <li>• QI expert panel approaches<sup>15</sup></li> </ul>	<ul style="list-style-type: none"> <li>• Link top-down leadership mandates with bottom-up clinic-level transformation</li> </ul>
Transformation involves major shifts in roles and mental models within primary care and among its stakeholders <sup>32</sup>	<ul style="list-style-type: none"> <li>• Primary care practice autonomy (EY)</li> <li>• Interdisciplinary boundary spanning coordination<sup>33</sup></li> </ul>	<ul style="list-style-type: none"> <li>• Local interdisciplinary leadership and QI support structures</li> </ul>
"The technology needed for the PCMH is not plug and play" <sup>9</sup>	<ul style="list-style-type: none"> <li>• CQI culture<sup>34-36</sup></li> <li>• Improvement design theory (The Chronic Care Model)<sup>25,26</sup></li> <li>• CQI diagnostic and analytic methods<sup>37</sup></li> <li>• Researcher/clinical partnership<sup>38</sup></li>   <li>• Knowledge transfer<sup>39,40</sup></li> <li>• Program evaluation<sup>41-43</sup></li> </ul>	<ul style="list-style-type: none"> <li>• QI coaching</li> <li>• Formal innovations development using CQI methods</li> <li>• Researcher/clinical partnership QI to promote evidence-informed locally initiated innovations</li> <li>• Engagement of regional experts to support innovation in key topic areas</li> <li>• Formative evaluation</li> </ul>
Motivations of key stakeholders for understanding and guiding practice change influences PCMH success <sup>44</sup>	<ul style="list-style-type: none"> <li>• Complex adaptive systems<sup>1</sup></li> <li>• Multiple stakeholder engagement<sup>45</sup></li> <li>• Patients as stakeholders<sup>46</sup></li> <li>• Social marketing<sup>47</sup></li> </ul>	<ul style="list-style-type: none"> <li>• Multilevel interdisciplinary and patient engagement</li> <li>• Communications targeting</li> </ul>
The complexity of PCMH implementation warrants efforts to address local contexts through spread of successful approaches <sup>29</sup>	<ul style="list-style-type: none"> <li>• Diffusion of innovations<sup>11,48</sup></li> <li>• Improving interdependencies for promoting spread<sup>45</sup></li> <li>• Frontline QI attitudes regarding support spread and adoption of innovations<sup>49,50</sup></li> </ul>	<ul style="list-style-type: none"> <li>• Demonstration site focus</li> <li>• Spread tools and process</li> </ul>

identified barriers to implementation of logic model outputs, and are discussed below.

**Logic Model Inputs. National PACT Implementation.** VA used an extensive centrally designed package of directives, special-purpose funding, education, regional QI learning sessions, and PACT performance measures to implement PACT.<sup>3</sup> The required staffing model focuses on interdisciplinary "teamlets"<sup>21,22</sup> that follow patient panels in continuity. Teamlets are supported by a team that may include a health coach, social worker, and pharmacist, and a "neighborhood" of linked specialists and facilities.<sup>23</sup>

**VA Embedded Researchers and Staff.** The research team is based in a VA health services research center.

**VA Information System.** EBQI-PACT is occurring within the context of an integrated, highly developed electronic medical record and informatics infrastructure.<sup>24</sup>

**Logic Model Outputs—Organizational Structures. Regional Steering Committee.** Convened by VAIL, the Committee consists of regionally recognized leaders in information technology, patient advocacy, training, QI and redesign, and pharmacy. The Committee establishes innovation priorities.

**Demonstration PC Practices.** Demonstration practices are designated by their local HCS leaders as sites for developing, testing and spreading PACT-related innovations.

**Healthcare System Memoranda of Understanding (MOU).** The top leadership (Director, Chief of Staff, Chief of Nursing) for participating HCSs agrees to support demonstration site Quality Councils, local interdisciplinary leadership, and release time for involved clinicians and staff.

**Demonstration Practice Interdisciplinary Leadership.** Each participating HCS identifies, for each demonstration practice, a local PC practice-based MD, nurse, and administrative leadership team.

**Quality Councils.** VAIL Quality Councils provide interdisciplinary QI leadership for each demonstration PC practice. They are charged with developing and/or reviewing all site QI innovations, selecting some to propose to the Steering Committee, engaging patient representatives, and meeting regularly. Each Council is supported by a Masters-level Coordinator hired by the local HCS, but supported through funds from VAIL. Phase 2 sites share a Coordinator with the Phase 1 site from their HCS (a planned total of three Coordinators).

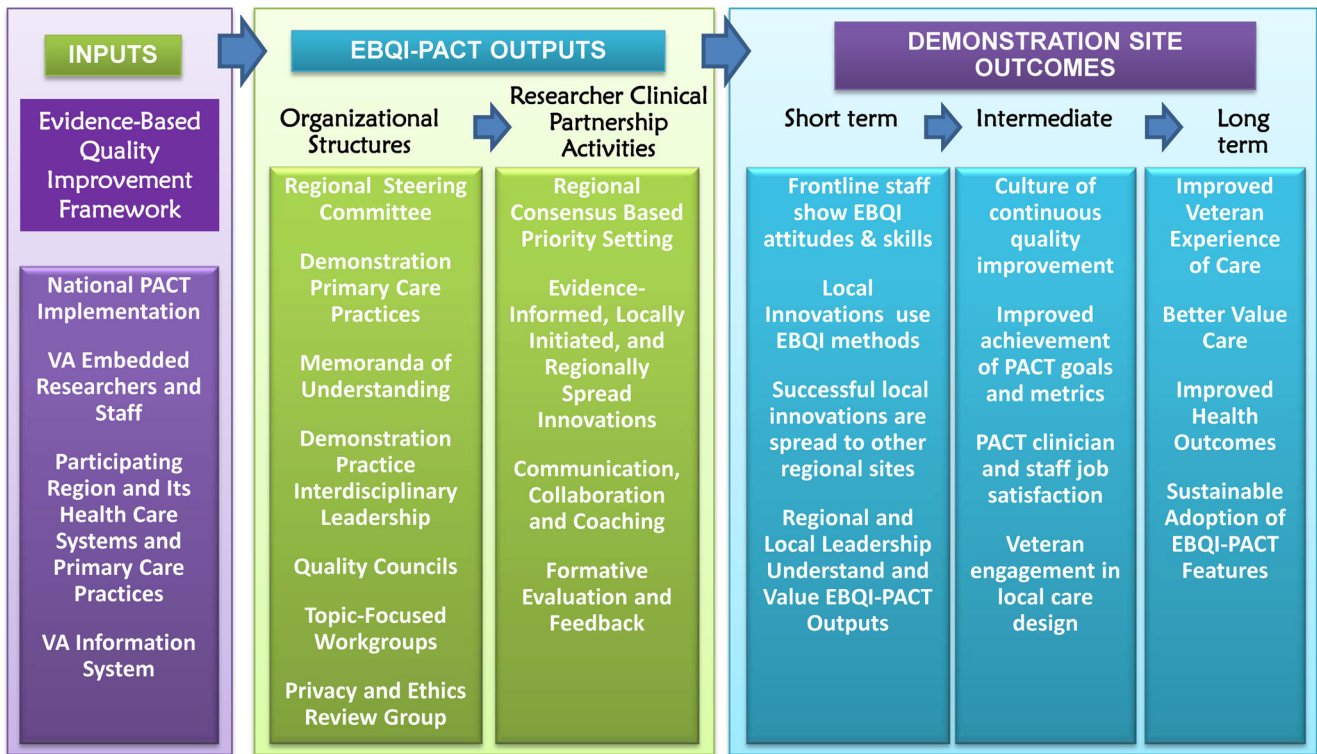


Figure 2. VAIL logic model for facilitating implementation of Patient Aligned Care Teams (PACT) using Evidence-Based Quality Improvement (EBQI) methods.

**Topic-Focused QI Workgroups.** Five VAIL topic-focused Workgroups (education/training; mental health care in PACT; PACT for homeless; PACT pharmacy care; and patient-centered care) have across-site membership, engage patient representatives, meet regularly, and develop relevant innovations. Workgroups are led by regionally recognized experts, often with research experience. Members may be from outside VA.

**Privacy and Ethics Review Subcommittee.** Chaired by human subject research experts, this Subcommittee of the Steering Committee assists innovation projects.

**Logic Model Outputs: Researcher-Clinical Partnership Activities. Regional Consensus-Based Priority Setting<sup>4,15</sup>.** Once a year, Steering Committee members review submitted proposals using a structured online process, and come to consensus during a face-to-face meeting.

**Evidence-Informed, Locally Initiated QI Innovations and Toolkits.** Appendix 2 (available online) lists the innovations undertaken as of December 2012. Successful innovations produce toolkits addressing all relevant Chronic Care Model elements.<sup>25,26</sup> Toolkits are pre-tested by additional demonstration sites prior to broader dissemination. Researchers provide technical support to innovations including: 1) responsive evidence review;<sup>18</sup> 2) quality measures and information technology support; and 3) tool development and production.

**Communication, Collaboration and Coaching.** Activities include 1) twice-yearly collaborative learning sessions highlighting all innovations and their developers, with coaching for QI skill development;<sup>27</sup> 2) twice monthly across-site coordination and learning calls; 3) participation in the regional PC committee; 4) biannual demonstration site newsletters; 5) VAIL website; and 6) coaching for Quality Council Coordinators, who in turn coach Quality Council members.

**Formative Evaluation and Feedback.** Focuses on user friendly formats showing PACT-relevant results across various data sources for demonstration sites.

**Logic Model Outcomes.** The logic model (Fig. 2) links features of the context (Inputs) and program components (Outputs) to their desired outcomes in the short-term, medium-term and long-term.

### Implementation Of EBQI-PACT

The analyses presented here address implementation of EBQI-PACT Outputs (Organizational Structures and Researcher Clinical Partnership Activities) at 18 months. Nearly all EBQI-PACT Outputs were in place or implemented, at least in part (Table 2). All sites remain engaged in EBQI as of October 2013.

Table 2. EBQI-PACT Implementation Results (June 2010 to December 2012)

EBQI-PACT outputs	Implementation activity	Achievement
Organizational structure outputs		
Regional Steering Committee	At least 80 % of Committee members <ul style="list-style-type: none"> <li>• Attend Steering Committee meetings</li> <li>• Complete innovation priority reviews</li> </ul>	Met Met
Demonstration primary care practices	100 % of participating healthcare systems <ul style="list-style-type: none"> <li>• Select three demonstration sites by 7/2010</li> <li>• Select three additional sites by 9/2010</li> </ul>	Met Met
Memoranda of Understanding (MOU) with healthcare systems	100 % of participating health systems meet MOU stipulations for <ul style="list-style-type: none"> <li>• Convening quality councils</li> <li>• Naming site interdisciplinary leaders</li> <li>• Release time for interdisciplinary leaders</li> </ul>	Met Partially met Met
Demonstration practice interdisciplinary leadership	100 % of designated site leadership teams <ul style="list-style-type: none"> <li>• Include nurse, MD, and administrator</li> <li>• Meet together regularly</li> </ul>	Met Partially met
Quality councils	100 % of Sites Participate in Quality Councils that <ul style="list-style-type: none"> <li>• Have interdisciplinary membership (MD, RN, admin, pharmacy, social work)</li> <li>• Include at least one patient representative</li> <li>• Meet regularly</li> <li>• Have a Quality Council Coordinator</li> </ul>	Met Partially met Partially met Met
Topic focused workgroups	100 % of VAIL-convened Topic Focused Workgroups <ul style="list-style-type: none"> <li>• Have across site representation</li> <li>• Include patient representatives</li> <li>• An approved innovation project</li> </ul>	Partially met Partially met Partially met
Privacy and ethics subcommittee	Privacy and Ethics Subcommittee convened and meets regularly for QI project review and ethical guidance.	Met
Researcher clinical partnership activities		
Regional consensus-based priority setting	5–8 innovations proposals are prioritized for VAIL support each year	Met
Evidence-Informed, locally initiated and regionally spread innovations	At least 80 % of VAIL-approved proposals have <ul style="list-style-type: none"> <li>• Requested and received an evidence review</li> <li>• Use PDSA cycles (small tests of change)</li> </ul> At least 80 % of VAIL approved proposals have consulted with researcher technical support for production and development of <ul style="list-style-type: none"> <li>• Measures and/or information technology interventions</li> <li>• Development of toolkits</li> </ul>	Met Met Met Met
Communication, collaboration and coaching	100 % of demonstration sites participate at least 80 % of the time in <ul style="list-style-type: none"> <li>• Learning sessions (at least three representatives per site)</li> <li>• Across site coordination and learning calls (at least one representative on each call)</li> <li>• Local biannual newsletter production</li> </ul> 100 % of Quality Council Coordinators attend at least one of the following researcher partnership activities at least 80 % of the time <ul style="list-style-type: none"> <li>• Coordinator coaching and leadership calls</li> <li>• Measures and information technology support</li> <li>• Learning sessions</li> </ul> The VAIL SharePoint site shows at least <ul style="list-style-type: none"> <li>• Ten non-researcher visitors/week</li> <li>• Evidence of use of user feedback and response at least once per toolkit</li> </ul>	Met Met Met Partially met Partially met Met Met Met Not met
Formative evaluation and feedback	At least once yearly, site level reports reflecting multiple data sources are shared with sites and regional leadership	Met

### Implementation of EBQI-PACT Organizational Structure.

As shown in Table 2, the *Regional Steering Committee* completed all implementation activities. Selection of *demonstration sites* was completed; however, one healthcare

system had to identify a new site 6 months after start-up, due to a reorganization that eliminated the original site.

The implementation of EBQI-PACT interdisciplinary organizational structures varied somewhat across demonstration

sites. The terms of the *MOU* for identifying local PC practice MD, RN and Administrative leaders were met in four of the six sites. *Quality Councils* in all six sites involved nursing, physicians, and administration in interdisciplinary leadership to some degree. All systems hired *Quality Council Coordinators*, and one hired two coordinators for a total of four positions. At four of six sites, *Quality Councils* met regularly and had substantial local authority over PACT QI activities. In two other sites, the Councils met intermittently except when their projects were in an active phase. Two HCSs created a new approach by linking their local VAIL *Quality Councils* to a larger system-level quality leadership group. Four Councils had patient representatives. All *Quality Councils* garnered one to three approved innovations.

Among the five *Topic-Focused Workgroups*, implementation activities were not completely met. One Workgroup included a patient representative, two had across-site representation, and three garnered an approved innovation. The *Privacy and Ethics Subcommittee* met expectations by reviewing all VAIL QI innovation projects to identify potential for unintended consequences, and providing consultation to two projects.

***Qualitative Assessment of Barriers to Major EBQI-PACT Features (Outputs).*** VA HCSs are organized in services (e.g. MD, nurse, administration). Local PC practice professionals and staff report upward to HCS service chiefs. Establishment of a named interdisciplinary leadership team and *Quality Councils* at local practices was a new activity for all demonstration sites. Four sites, however, had prior relevant local leadership experience and were more easily able to engage all or nearly all relevant leaders. Based on interview summaries, at the two sites not fully achieving *Quality Councils*, not all key interdisciplinary PC leaders joined the site's *Quality Council*. One said: "There really needs to be better communication and coordination...But that may just be my lack of seeing what's going on because I'm not on the [*Quality Council*], and that may just be the way it looks to me because I don't know who's doing what and how." At these sites, some interviewees voiced frustration with leadership silos as an impediment to moving innovations beyond pilot phases.

The productivity of some *Workgroups*, and the extent to which they met expectations, varied over the period of observation. For example, one *Workgroup* has attracted substantial external funding in addition to VAIL innovations, has published several papers, and met all of our implementation criteria. Another *Workgroup* met early in the project, lapsed, and is now carrying out a partially externally funded innovation, but has not fully met any of our criteria. A third was active for several months and had a VISN-wide impact on development of PACT team member roles, but had no VAIL-approved innovation projects. The availability of *Workgroup* leaders with sufficient release time from research, clinical or administrative duties appears to be a determinant of model adherence.

***Implementation of Researcher-Clinical Partnership Activities.*** The *Regional Steering Committee* completely implemented its research-clinical partnership activities. The Committee carried out two rounds of proposal review. Of 60 proposals submitted; the Committee approved 15 to receive VAIL support. Only one approved project was not completed. VAIL spent approximately \$180,000 to support innovation budget requests, and received approval for all release time requested by innovation leaders. The *Evidence Review Group* completed 18 responsive evidence reviews and presented them at collaborative learning sessions. Three *innovation toolkits* have undergone across-site pre-testing, two of these are on the VAIL website for external spread, and five others are in pre-testing. For *formative evaluation*, VAIL produced two sets of site-level reports (twelve total) assessing provider, staff and patient experiences. Based on these reports, leaders at four of six demonstration practices undertook projects to address provider burnout and/or patient satisfaction.

Among intended research-clinical partnership activities related to *communication*, and *collaboration and coaching*, all activities related to learning sessions, calls, and local newsletters were met. Participation in biweekly site leader calls and collaborative learning sessions was high across sites and disciplines. Site participation in specific work on measures (at a weekly measures call), coaching and outreach, and innovations was more variable. One site's *Quality Council Coordinator* participated irregularly in coaching, measures, or leadership calls. All six demonstration sites produced biannual newsletters (a total of 11 with one representing two sites); four of these highlighted patient representatives.

***Qualitative Analysis of Barriers to Researcher-Clinical Partner Activities.*** These activities were perceived as generally supportive across sites. Based on interviews, the protected time for innovations provided by the HCSs through the *MOU* facilitated VAIL activities. Key stakeholders at all sites cited *Quality Council Coordinators* as indispensable for facilitating PACT QI. As one key stakeholder described, "Suddenly we were becoming very dependent on the [*Coordinators*]...[They] were even able to do much more complex mining of the data so that we were able to look at things that we never knew [we could get]." HCSs also noticed *Coordinator* skills. Based on project documents, two of six total *Coordinators* hired during the project were promoted to VISN or HCS leader support positions. Two others required VAIL leadership intervention because their HCSs overly accessed their time.

## DISCUSSION

Achieving PACT (or PCMH) goals requires a level of collaboration and integration within, across, and outside of PC practices that is transformational.<sup>9</sup> Nutting and colleagues in the PCMH National Demonstration Project identified having an organizational culture that promotes organizational

learning and development as a key facilitator for PCMH success.<sup>2</sup> PC practice settings that promote ongoing quality improvement and innovation<sup>1</sup> support organizational learning. EBQI-PACT is a multi-level quality improvement approach for supporting local, regional and national organizational learning through local quality improvement innovation that addresses PCMH and PACT goals.

Future summative evaluation will test whether EBQI-PACT achieves its intended outcomes. In the work presented here, we describe the key elements and logic underlying EBQI-PACT. We document that a large VA region, its HCSs, and its demonstration primary care practices implemented nearly all pre-planned EBQI-PACT structural changes and activities to a moderate or high level of fidelity over a two-and-a-half-year period. Finally, we identify barriers to some of the changes.

EBQI-PACT, like other multi-level regional initiatives carried out through practice-based research networks,<sup>28</sup> may provide a feasible way to link QI experts, researchers and clinical stakeholders for advancing PCMH goals. If successful, the approach can be tested in additional non-VA and VA regions or networks as a method for achieving PCMH/PACT improvement.

To participate in EBQI-PACT, each demonstration site is required to have a named MD, nurse, and administrator leadership team, a local interdisciplinary Quality Council, and a Quality Council Coordinator. Qualitative interviews identified these structural changes, researcher team technical support, and the HCS sanctioned release time for designated local leaders as facilitators for PACT implementation.

Not all initial implementation activities were completed in all sites. Patient engagement in Quality Councils was enthusiastically adopted in four of six sites, but sustained in only one. Feedback from patient representatives indicates that the role requires initial training, as well as time commitments that may be difficult for volunteer representatives to support over time. Methods for supporting the critical role of patients in care design are urgently needed. Achieving local interdisciplinary leadership also appears to be easier in some sites than others, likely based on local site history and HCS support for local site interdisciplinary interaction and leadership. Further development of methods for overcoming historical silos is imperative for achieving PACT goals.

This project focused on reconfiguring rather than adding new resources for improvement. Project monetary resources support only Quality Council Coordinators and modest requested innovation resources; innovation team members use release time provided by their HCSs. Quality Council Coordinators are hired by HCSs and are not dissimilar to individuals hired for other QI work. The technical support team acts primarily at a distance from the PC sites, and consists of embedded health services researchers and staff.

The work presented here has limitations. First, it does not address EBQI-PACT effectiveness. Also, as shown in the logic model, the applicability of the approach to non-VA settings is context-dependent. In terms of applicability

within VA, sites were chosen by HCSs and may not be representative. However, they did include both teaching and non-teaching HCS-based and community-based PC practices. Finally, while we used formal qualitative methods, we targeted our analyses to assess implementation only. Full qualitative analyses will be subsequently completed.

In summary, the information presented here shows that this EBQI-PACT demonstration achieved most of its implementation goals. Future evaluation will test the outcomes of this approach, and consider its applicability to other VA and non-VA care systems.

---



---

#### Acknowledgements:

**Contributors:** The authors wish to acknowledge the important contributions of Daniel Castro, MD, Philip Roos, MD, Justin Sivill, MBA, and the VAIL Steering Committee (Donna Beiter, RN, MSN, Kathy Bucher, RN, Darrel Burns, MBA, LCSW, Laura Dolata, RN, Mary Anne Facey, Barbara Fallen, RD, MPA, FACHE, Rebecca Fera, RN, MSN, David Gray, PharmD, FASHP, Cheryl Hardcastle, BS, Peter Hauser, MD, Michael Kilmer, MSW, Jennifer Malin, MD, PhD, Skye McDougall, PhD (Chair), Donald Moore, Randy Quinton, MS, Mark Rielo, MA, MPH, Sandra Robertson, RN, MSN, Robert Smith, MD) for their project leadership; Richard Stark, MD, Gordon Schectman, MD, and Stephan Fihn, MD, MPH, for their guidance at the national level; Barbara Simon, MA, and Jill Darling, MSHS, for their privacy and ethics expertise; and John McElroy, BA, for his evaluation support. Authors would also like to acknowledge our primary care practice site partners who were instrumental in implementing EBQI-PACT.

**Funders:** This work was undertaken as part of the Veterans Affairs PACT Demonstration Laboratory initiative, supporting and evaluating VA's transition to a patient-centered medical home. Funding for the PACT Demonstration Laboratory (XVA 65-018) initiative is provided by the VA Office of Patient Care Services. Dr. Yano's time was supported by a VA HSR&D Senior Research Career Scientist award (Project #05-195). VAIL is also supported, in part, by the VA HSR&D Center for the Study of Healthcare Innovation, Implementation and Policy, a VA HSR&D Center of Innovation (formerly Center of Excellence), and the VA Quality Enhancement Research Initiative's Center for Implementation Practice and Research Support at the VA Greater Los Angeles Healthcare System.

**Prior Presentations:** None.

**Conflict of Interest:** All authors are employed or contract consultants with the Department of Veterans Affairs. The views expressed within are solely those of the authors, and do not necessarily represent the views of the Department of Veterans Affairs or the United States government.

**Corresponding Author:** Lisa V. Rubenstein, MD, MSPH; VA HSR&D Center for the Study of Healthcare Innovation, Implementation, and Policy, VA Greater Los Angeles Healthcare System, VA Greater Los Angeles, 16111 Plummer Street, North Hills, CA 91343, USA (e-mail: lisa.rubenstein@va.gov).

**Open Access** This article is distributed under the terms of the Creative Commons Attribution License which permits any use, distribution, and reproduction in any medium, provided the original author(s) and the source are credited.

## REFERENCES

1. Crabtree BF, Nutting PA, Miller WL, et al. Primary care practice transformation is hard work: insights from a 15-year developmental program of research. *Med Care*. 2011;49(Suppl):S28-35.



2. **Nutting PA, Crabtree BF, Miller WL, Stange KC, Stewart E, Jaen C.** Transforming physician practices to patient-centered medical homes: lessons from the national demonstration project. *Health Aff (Millwood)*. 2011;30(3):439–445.
3. **Klein S.** The Veterans Health Administration: implementing patient-centered medical homes in the nation's largest integrated delivery system: The Commonwealth Fund; 2011.
4. **Rubenstein LV, Meredith LS, Parker LE, et al.** Impacts of evidence-based quality improvement on depression in primary care: a randomized experiment. *J Gen Intern Med*. 2006;21(10):1027–1035.
5. **Yano EM, Rubenstein LV, Farmer MM, et al.** Targeting primary care referrals to smoking cessation clinics does not improve quit rates: implementing evidence-based interventions into practice. *Health services research*. Jun 3 2008.
6. **Rubenstein LV, Chaney EF, Ober S, et al.** Using evidence-based quality improvement methods for translating depression collaborative care research into practice. *Fam Syst Health J Collab Fam Healthcare*. 2010;28(2):91–113.
7. **Fortney J, Enderle M, McDougall S, et al.** Implementation outcomes of evidence-based quality improvement for depression in VA community based outpatient clinics. *Implement Sci*. 2012;7:30.
8. **True G, Butler AE, Lamparska BG, et al.** Open access in the patient-centered medical home: lessons from the Veterans Health Administration. *J Gen Intern Med*. 2013;28(4):539–545.
9. **Nutting PA, Miller WL, Crabtree BF, Jaen CR, Stewart EE, Stange KC.** Initial lessons from the first national demonstration project on practice transformation to a patient-centered medical home. *Ann Fam Med*. 2009;7(3):254–260.
10. **Stroebel CK, McDaniel RR Jr, Crabtree BF, Miller WL, Nutting PA, Stange KC.** How complexity science can inform a reflective process for improvement in primary care practices. *Joint Comm J Qual Patient Safety/Joint Comm Res*. 2005;31(8):438–446.
11. **Rogers EM.** Diffusion of innovations. New York: The Free Press; 1995.
12. **Goldberg HI, Wagner EH, Fihn SD, et al.** A randomized controlled trial of CQI teams and academic detailing: can they alter compliance with guidelines? *Jt Comm J Qual Improv*. 1998;24(3):130–142.
13. **Goldzweig CL, Parkerton PH, Washington DL, Lanto AB, Yano EM.** Primary care practice and facility quality orientation: influence on breast and cervical cancer screening rates. *Am J Manag Care*. 2004;10(4):265–272.
14. **Liu CF, Hedrick SC, Chaney EF, et al.** Cost-effectiveness of collaborative care for depression in a primary care veteran population. *Psychiatr Serv*. 2003;54(5):698–704.
15. **Rubenstein LV, Fink A, Yano EM, Simon B, Chernof B, Robbins AS.** Increasing the impact of quality improvement on health: an expert panel method for setting institutional priorities. *Joint Comm J Qual Improv*. 1995;21(8):420–432.
16. **Wagner EH, Glasgow RE, Davis C, et al.** Quality improvement in chronic illness care: a collaborative approach. *Jt Comm J Qual Improv*. 2001;27(2):63–80.
17. **Mills PD, Weeks WB.** Characteristics of successful quality improvement teams: lessons from five collaborative projects in the VHA. *Joint Comm J Qual Safety*. 2004;30(3):152–162.
18. **Sherwood Danz M, Hempel S, Lim Y, et al.** Incorporating evidence review into quality improvement: meeting the needs of innovators. *BMJ Qual Safety*. 2013.
19. **Averill JB.** Matrix analysis as a complementary analytic strategy in qualitative inquiry. *Qual Health Res*. 2002;12(6):855–866.
20. **Taylor-Powell E, Henert E.** Developing a logic model: teaching and training guide. Madison, WI: University of Wisconsin-Extension, Cooperative Extension, Program Development and Evaluation. <http://www.uwex.edu/ces/pdande/evaluation/pdf/lmguidcomplete.pdf>. Accessed April 25, 2013.
21. **Bodenheimer T, Laing BY.** The teamlet model of primary care. *Ann Fam Med*. 2007;5(5):457–461.
22. **Rosland AM, Nelson K, Sun H, et al.** The patient-centered medical home in the Veterans Health Administration. *Am J Manag Care*. 2013;19(7):e263–272.
23. **Hollingsworth JM, Saint S, Hayward RA, Rogers MA, Zhang L, Miller DC.** Specialty care and the patient-centered medical home. *Med Care*. 2011;49(1):4–9.
24. **Evans DC, Nichol WP, Perlin JB.** Effect of the implementation of an enterprise-wide Electronic Health Record on productivity in the Veterans Health Administration. *Health Econ Pol Law*. 2006;1(Pt 2):163–169.
25. **Coleman K, Austin BT, Brach C, Wagner EH.** Evidence on the chronic care model in the new millennium. *Health Aff (Millwood)*. 2009;28(1):75–85.
26. **Bodenheimer T, Wagner EH, Grumbach K.** Improving primary care for patients with chronic illness. *JAMA*. 2002;288(14):1775–1779.
27. **Boonyasai RT, Windish DM, Chakraborti C, Feldman LS, Rubin HR, Bass EB.** Effectiveness of teaching quality improvement to clinicians: a systematic review. *J Am Med Assoc*. 2007;298(9):1023–1037.
28. **Mold JW, Peterson KA.** Primary care practice-based research networks: working at the interface between research and quality improvement. *Ann Fam Med*. 2005;3(Suppl 1):S12–20.
29. **Lukas CV, Holmes SK, Cohen AB, et al.** Transformational change in health care systems: an organizational model. *Health Care Manag Rev*. 2007;32(4):309–320.
30. **Ovretveit J.** Understanding the conditions for improvement: research to discover which context influences affect improvement success. *BMJ Qual Saf*. 2011;20(Suppl 1):i18–23.
31. **Ovretveit J.** Improvement leaders: what do they and should they do? A summary of a review of research. *Qual Safety Health Care*. 2010;19(6):490–492.
32. **Nutting PA, Crabtree BF, Miller WL, Stewart EE, Stange KC, Jaen CR.** Journey to the patient-centered medical home: a qualitative analysis of the experiences of practices in the National Demonstration Project. *Ann Fam Med*. 2010;8 Suppl 1:S45–56; S92.
33. **Gittel JH, Seidner R, Wimbush J.** A relational model of how high-performance work systems work. *Organ Sci*. 2010;21(2):490–506.
34. **Kaplan HC, Provost LP, Froehle CM, Margolis PA.** The Model for Understanding Success in Quality (MUSIQ): building a theory of context in healthcare quality improvement. *BMJ Qual Safety*. 2012;21(1):13–20.
35. **Patrician PA, Dolansky M, Estrada C, et al.** Interprofessional education in action: the VA Quality Scholars fellowship program. *Nursing Clin North America*. 2012;47(3):347–354.
36. **Patrician PA, Dolansky MA, Pair V, et al.** The Veterans Affairs National Quality Scholars program: a model for interprofessional education in quality and safety. *J Nursing Care Qual*. 2013;28(1):24–32.
37. **McLaughlin C, Kaluzny A.** Continuous quality improvement in health care: theory, implementation, and applications. London: Jones and Bartlett Publishers International; 2004.
38. **King G, Currie M, Smith L, Servais M, McDougall J.** A framework of operating models for interdisciplinary research programs in clinical service organizations. *Eval Prog Plan*. 2008;31(2):160–173.
39. **Dobbins M, DeCorby K, Twiddy T.** A knowledge transfer strategy for public health decision makers. *Worldviews Evidence-based Nursing/Sigma Theta Tau Int Hon Soc Nursing*. 2004;1(2):120–128.
40. **Dobbins M, Rosenbaum P, Plews N, Law M, Fysh A.** Information transfer: what do decision makers want and need from researchers? *Implement Sci*. 2007;2:20.
41. **Pawson R, Tilley N.** Realistic evaluation. London: SAGE Publications Ltd.; 1997.
42. **Fink A.** Evaluation fundamentals: guiding health programs, research, and policy. Newbury Park: Sage Publications Ltd.; 1993.
43. **Bamberger M, Rugh J, Mabry L.** RealWorld evaluation. Thousand Oaks: SAGE Publications Ltd.; 2006.
44. **Cohen D, McDaniel RR Jr, Crabtree BF, et al.** A practice change model for quality improvement in primary care practice. *J Healthc Manag*. 2004;49(3):155–168. discussion 169–170.
45. **Lanham HJ, Leykum LK, Taylor BS, McCannon CJ, Lindberg C, Lester RT.** How complexity science can inform scale-up and spread in health care: understanding the role of self-organization in variation across local contexts. *Soc Sci Med*. Jul 4 2012.
46. **Khodyakov D, Stockdale S, Jones A, Mango J, Jones F, Lizaola E.** On Measuring Community Participation in Research. *Health education & behavior* : the official publication of the Society for Public Health Education. Oct 4 2012.
47. **Luck J, Hagigi F, Parker LE, Yano EM, Rubenstein LV, Kirchner JE.** A social marketing approach to implementing evidence-based practice in VHA QUERI: the TIDES depression collaborative care model. *Implement Sci*. 2009;4:64.
48. **Greenhalgh T, Robert G, Macfarlane F, Bate P, Kyriakidou O.** Diffusion of innovations in service organizations: systematic review and recommendations. *Milbank Quarterly*. 2004;82(4):581–629.
49. **Parker LE, Kirchner JE, Bonner LM, et al.** Creating a quality-improvement dialogue: utilizing knowledge from frontline staff, managers, and experts to foster health care quality improvement. *Qual Health Res*. Feb 2009;19(2):229–242.
50. **Parker LE, de Pillis E, Altschuler A, Rubenstein LV, Meredith LS.** Balancing participation and expertise: a comparison of locally and centrally managed health care quality improvement within primary care practices. *Qual Health Res*. Nov 2007;17(9):1268–1279.