




# Parameter Estimation for Mixed-Mechanism Tear Film Thinning

Rayanne A. Luke<sup>1</sup>  · Richard J. Braun<sup>1</sup> · Tobin A. Driscoll<sup>1</sup> · Deborah Awisi-Gyau<sup>1</sup> · Carolyn G. Begley<sup>1</sup>

Received: 30 September 2020 / Accepted: 11 February 2021 / Published online: 9 April 2021  
© The Author(s), under exclusive licence to Society for Mathematical Biology 2021

## Abstract

Etiologies of tear breakup include evaporation-driven, divergent flow-driven, and a combination of these two. A mathematical model incorporating evaporation and lipid-driven tangential flow is fit to fluorescence imaging data. The lipid-driven motion is hypothesized to be caused by localized excess lipid, or “globs.” Tear breakup quantities such as evaporation rates and tangential flow rates cannot currently be directly measured during breakup. We determine such variables by fitting mathematical models for tear breakup and the computed fluorescent intensity to experimental intensity data gathered *in vivo*. Parameter estimation is conducted via least squares minimization of the difference between experimental data and computed answers using either the trust-region-reflective or Levenberg–Marquardt algorithm. Best-fit determination of tear breakup parameters supports the notion that evaporation and divergent tangential flow can cooperate to drive breakup. The resulting tear breakup is typically faster than purely evaporative cases. Many instances of tear breakup may have similar causes, which suggests that interpretation of experimental results may benefit from considering multiple mechanisms.

**Keywords** Tear film · Dry eye · Fluorescence imaging · Optimization

## 1 Introduction

The tear film (TF) provides necessary moisture and nutrients to the ocular surface and, when its thickness is uniform, a smooth optical surface for clear vision. The TF is classically considered a three-layered film, composed of a thin, 20 to 100 nm or more thick oily lipid layer (King-Smith et al. 2011; Braun et al. 2015), an aqueous layer a few microns thick (King-Smith et al. 2004; Lu et al. 2014; Huang et al. 2016), and the

---

✉ Rayanne A. Luke  
rayanne@udel.edu

<sup>1</sup> Department of Mathematical Sciences, University of Delaware, Newark, DE 19716, USA

glycocalyx, a half-micron-thick bound mucin layer that sits atop the ocular surface (King-Smith et al. 2004). Evaporation of water from the TF is thought to be retarded by the lipid layer (Mishima and Maurice 1961; King-Smith et al. 2010; Dursch et al. 2018), although there is some disagreement on this issue (Georgiev et al. 2017). A healthy glycocalyx promotes wetting of the ocular surface (Gipson 2004; Argüeso and Gipson 2001; Tiffany 1990a, b). The lipid layer comprises mostly nonpolar lipids, but surface-active polar lipids exist at the aqueous/lipid interface that can act as a surfactant and drive aqueous flow (Johnson and Murphy 2004; McCulley and Shine 1997; Butovich 2013). Structure and function of the lipid layer is an active area of research (Borchman et al. 2019; Paananen et al. 2020).

The majority of the aqueous layer of the TF is supplied by the lacrimal gland near the temporal canthus (Dartt 2009), with the puncta draining the excess near the nasal canthus during the opening interblink phase (Doane 1981). The meibomian glands of the eyelids secrete the lipid layer and cells in the conjunctival epithelium supply the soluble mucins (Aydemir et al. 2010). Tangential flow along the corneal surface can be directed inward if driven by pressure-induced capillary flow (Oron et al. 1997). Alternatively, the Marangoni effect may drive outward flow, whereby surfactant concentration gradients induce shear stress at the aqueous/lipid interface (Craster and Matar 2009). Evaporation of water from the tear film into the air decreases the fluid volume (Mishima and Maurice 1961; Tomlinson et al. 2009; Kimball et al. 2010). Osmosis supplies water from the ocular epithelia (Braun 2012; Cerretani and Radke 2014; Braun et al. 2015).

Tear film breakup (TBU) is considered to occur when a dark spot appears in the fluorescent tear film, also called a dry spot (Norn 1969). Tear breakup time (TBUT) is the time required to produce the first dark spot in the tear film, as judged clinically. A related term is full-thickness tear breakup (FT-TBU) (Begley et al. 2013), when there is effectively no aqueous layer between the lipid layer and glycocalyx. This term is referred to as “touchdown” in King-Smith et al. (2018). We refer to the first occurrence of this in the trial as full-thickness breakup time (FT-TBUT). King-Smith et al. (2018) theorize that at FT-TBUT, the inner polar lipids of the tear film lipid layer touch the outer tips of the glycocalyx. TBUT and FT-TBUT can differ by as much as minutes if the dark spot appears and then thins very slowly. Many experiments to measure TF thinning rates have been conducted; previous work includes using an open chamber (Hamano et al. 1981), spectral interferometry (Nichols et al. 2005; Kimball et al. 2010; King-Smith et al. 2010), heat transfer analysis and thermal imaging (Dursch et al. 2018), and an evaporimeter (Peng et al. 2014b). None of these studies targeted areas of TBU specifically. Wong et al. (2018) reviewed literature values of measured evaporation rates over the palpebral fissure.

Studying TBU and FT-TBU is important to understanding dry eye disease (DED), as TF instability has been suggested to play an important etiological role in the disease (Craig et al. 2017; Willcox et al. 2017). DED affects between 5 and 50% of the population depending on the diagnostic criteria used and diminishes quality of life, vision, and ocular comfort (Nelson et al. 2017). TBU is considered an etiological factor that may induce DED via inadequate lubrication of the ocular surface, hyperosmolarity of the TF (Gilbard et al. 1978; Lemp et al. 2007; Willcox et al. 2017) and inflammation (Mertzanis et al. 2005; Miljanović et al. 2007).

Various mechanisms causing breakup have been proposed and studied and can roughly be categorized by the time until FT-TBU is reached. Evaporation causes relatively slow TF thinning (King-Smith et al. 2010) and cannot explain rapid TBU, in which a dry spot may form in a few tenths of a second (King-Smith et al. 2018; Yokoi and Georgiev 2013). Yokoi and Georgiev (2013, 2019) suggest that dewetting causes some instances of rapid circular thinning. The model that we fit to data in this paper was derived by Zhong et al. (2019) based on the hypothesis that Marangoni-driven tangential flow caused by “globs,” or relatively thick areas of the lipid layer, induces rapid breakup. The Marangoni effect induces flow due to a reduction in the aqueous/air surface tension brought about by the increase in surfactant concentration in the glob. The authors noted that if FT-TBUT (TBUT in their terminology) occurs in over 4 s, the cause of thinning is cooperative: tangential flow dominates early on but evaporation becomes the main mechanism later. This cutoff is similar to that for short breakup time used by Yokoi and Georgiev (2019) and others.

To better understand hyperosmolarity in breakup regions, recent TF thinning models have included osmolarity. Osmolarity is defined as a combined osmotically active solute concentration that comprises mostly salt ions in the aqueous layer (Stahl et al. 2012). Braun (2012) and Braun et al. (2015) studied an ordinary differential equation model with constant evaporation at the tear/air interface and osmotic flow at the tear/cornea interface proportional to the osmolarity increase above the isotonic value. Peng et al. (2014a) extended these models to include space-dependent evaporation. The authors found evaporation-driven elevated osmolarity levels in breakup regions, and that diffusion of solutes out of the breakup region prevented osmosis from stopping thinning. All of the models found elevated osmolarity levels caused by evaporation-driven thinning in the breakup region. Diffusion is shown to have a larger magnitude near breakup than that of advection for both solute distributions. In the center of breakup, diffusion of salt ions is four times faster than that of fluorescein, which causes the maximum osmolarity to fall short of the limiting value set by the flat film result (Peng et al. 2014a; Braun et al. 2014). Of interest in this article is the osmolarity of the tear film during thinning up to FT-TBU and how the dominant mechanism causing thinning or the trial length may affect the maximum salt concentration attained in a breakup region.

Lab-on-a-chip technology allows osmolarity to be measured in the inferior meniscus in a clinical setting (Lemp et al. 2011). The osmolarity of a normal (non-dry eye) tear film is in the range 296–302 mOsM (Lemp et al. 2011; Tomlinson et al. 2006; Versura et al. 2010); healthy blood ranges from 285 to 295 mOsM (Tietz 1995). Some observations show that meniscus osmolarity levels reach 316–360 mOsM in DED (Gilbard et al. 1978; Tomlinson et al. 2006; Sullivan et al. 2010; Dartt and Willcox 2013). Since clinical measurements of osmolarity cannot target the cornea, estimates from experiment or mathematical models are useful. Peak osmolarity values from 645 to 3000 mOsM have been estimated experimentally (Liu et al. 2009), computed in mathematical models of TBU (Braun et al. 2015; Peng et al. 2014a), and generated by fitting experimental data (Luke et al. 2020).

Imaging is an important tool for analyzing TF dynamics. Fluorescence imaging (King-Smith et al. 2013b), spectral interferometry (King-Smith et al. 2004, 2009; Nichols et al. 2005), and optical coherence tomography (Wang et al. 2003) are all

common imaging techniques. Insertion of dyes such as fluorescein have been used to stain epithelial cells (Norn 1970; Bron et al. 2015, e.g.), estimate tear drainage rates or turnover times (Webber and Jones 1986), visualize general TF dynamics (Benedetto et al. 1986; Begley et al. 2013; King-Smith et al. 2013a; Li et al. 2014), estimate TF first breakup times (Norn 1969), and capture the progression of breakup regions (Liu et al. 2006). We will refer to the fluorescent quantities (e.g., concentration and intensity) using FL. Simultaneous imaging via interferometry for the lipid-layer thickness and FL intensity for the aqueous layer found TBU is caused by different mechanisms (King-Smith et al. 2013b). Braun et al. (2015) found that flow inside the tear film during TBU can advect fluorescein and thereby change the expected appearance of the TBU; this can complicate interpretation of FL imaging. Simultaneous imaging can help interpret TF dynamics (Himebaugh et al. 2012; King-Smith et al. 2013b; Arnold et al. 2010).

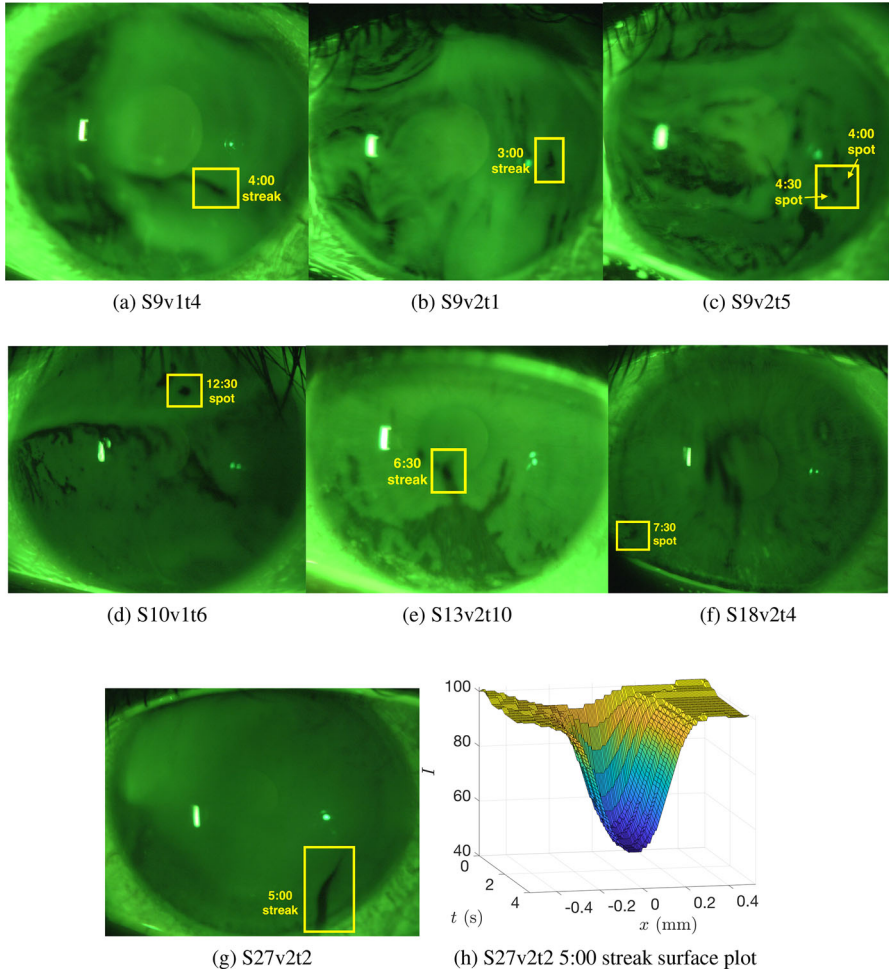
Luke et al. (2020) developed a parameter estimation scheme for fitting experimental data from FL images with axisymmetric and linear mathematical models given in Braun et al. (2018) for evaporation-driven thinning. They found realistic optimal values for peak and background evaporation rates and dry spot sizes, and their thinning rate estimates fell within experimental ranges (Nichols et al. 2005). Minimum theoretical TF thickness values from the fits leveled off around  $1.5\ \mu\text{m}$  on average and maximum osmolarity estimates clustered a little over twice the isotonic value. Normalized theoretical TF thickness  $h$  and FL intensity  $I$  were compared for various initial FL concentrations. FL intensity computed using an initial FL concentration between 0.1 and 0.15% was shown to most closely match the TF thickness profile.

In this article, we present the results of fitting a TF thinning model incorporating both lipid-driven tangential flow and evaporation developed by Zhong et al. (2019) to experimental FL intensity data from healthy subjects' TFs. These findings include flow rates and lipid glob sizes that have not been measured in vivo in FT-TBU. We believe these results advance the understanding of TF thinning and dry spot formation as they provide evidence that lipid-driven flow can cooperate with evaporation to cause breakup and can serve as a reference point when comparing to dry eye patient data.

This article is organized as follows. We describe the data used and reproduce the axisymmetric model by Zhong et al. (2019) for spots with various evaporation distribution options. Our fitting procedure is outlined and results are given. Discussion and conclusions follow.

## 2 FL Images

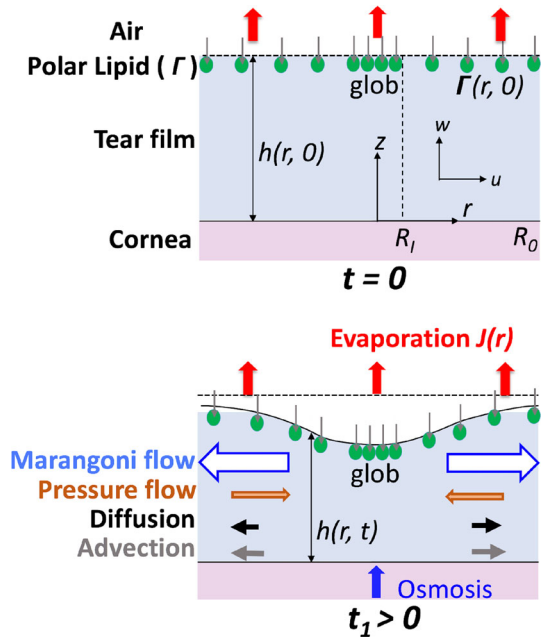
We use data from twenty-five normal, healthy subjects taken in a study conducted at Indiana University (Awisi-Gyau 2020) as discussed in Braun et al. (2018) and Luke et al. (2020); we reiterate a brief description below. The study received approval from the Biomedical Institutional Review Board of Indiana University. We refer to a trial as the sequence of images of the subject's eye. 2% sodium fluorescein solution is instilled in the patient's eye and a light with a cobalt blue excitation filter is shined on the eye so that the aqueous layer of the tear film (TF) fluoresces green (Carlson et al. 2004). (The critical FL concentration can also be expressed in molar as 0.0053 M; see Sect. 3.5.)



**Fig. 1** (Color figure online) **a–g** The last image in each trial. The bright rectangle, called the Purkinje reflex, is due to the reflection from the light source. **h** Surface plot of the S27v2t2 5:00 shown in **(g)**

FT-TBU is computer-aided determination of thinning to what is evidently a very small aqueous thickness. As in Luke et al. (2020), we select single spot- or streak-shaped FT-TBU instances to extract data from and fit with our circular or linear models. All instances reported in this paper are shown in Fig. 1. King-Smith et al. (2013b) recorded several instances of breakup that formed in a few seconds or less using simultaneous imaging of the lipid and aqueous TF layers. Zhong et al. (2019) note that evaporation alone cannot produce rapid breakup, citing that it takes at least 8 s to observe a dark spot for a 3.5  $\mu\text{m}$  thick TF with an evaporation rate of 25  $\mu\text{m}/\text{min}$ . This influenced our choice of 8 s as an upper bound for the FT-TBUTs to study in this work. Our data vary between a frame rate of 4 or 5 per second; this restricts the time resolution depending on the trial as the data that is extracted from these movies is very

**Fig. 2** (Color figure online) Schematic of the mechanisms affecting the TF thickness  $h(r, t)$  at  $t = 0$  and at a slightly later time. Osmolarity,  $c(r, t)$ , and FL concentration,  $f(r, t)$ , are computed inside the TF. Surfactant concentration is shown as  $\Gamma$  with glob radius  $R_I$  denoting the edge of the region of thicker lipid. The domain size is  $R_0$



dynamic. A comparison of the rate of decrease in FL intensity is explored in Sect. 5; see Figs. 15 and 16.

### 3 Model

The mathematical model that we fit to experimental FL imaging data was created by Zhong et al. (2019). In order to best fit the data, we modify two scaling choices. We discuss the model formulation briefly and reproduce the equations below.

We hypothesize that intermediate TF breakup, occurring between 1 and 8 s, is driven by a combination of Marangoni effect-driven tangential flow and evaporation. A sketch of the situation is shown in Fig. 2. We believe the data we work with lacks the time resolution needed to capture rapid TF breakup driven solely by the Marangoni effect, which may occur in under 1 s (Zhong et al. 2018).

We discuss the model by Zhong et al. (2019) in axisymmetric coordinates; the Cartesian case is similar. The TF is modeled as a single-layer Newtonian fluid with constant viscosity  $\mu$  and density  $\rho$ . The mean surface tension at the tear/air interface,  $\sigma$ , is assumed constant, although the change in surface tension,  $(\Delta\sigma)_0$ , will be allowed to vary. The surface tension  $\sigma$  is given by the linearized equation of state

$$\sigma = \sigma_0 + (\Delta\sigma)_0(\Gamma' - \Gamma_0), \tag{1}$$

where  $\Gamma'$  is the surface concentration with  $\Gamma_0$  its initial condition. The solute diffusivities are assumed constant as well.

**Table 1** The dimensional parameters used. The range of estimates for thinning rates are from point measurements from published studies. Some ranges are extended in our results below

Dimensional parameters			
Parameter	Description	Value	References
$\mu$	Viscosity	$1.3 \times 10^{-3}$ Pa s	Tiffany (1991)
$\rho$	Density	$10^3$ kg m <sup>-3</sup>	Water
$A^*$	Hamaker constant	$6\pi \times 3.5 \times 10^{-19}$ s m <sup>-1</sup>	Ajaev and Homsy (2001)
$d$	Initial TF thickness	$2-5 \times 10^{-6}$ m	Calculated (Luke et al. 2020)
$v'$	Thinning rate	$0.5-25$ $\mu$ m/min	Nichols et al. (2005)
$V_w$	Molar volume of water	$1.8 \times 10^{-5}$ m <sup>3</sup> mol <sup>-1</sup>	Water
$D_s$	Surface diffusion coefficient	$3 \times 10^{-8}$ m <sup>2</sup> /s	Casalini et al. (2011)
$D_f$	Diffusivity of fluorescein	$0.39 \times 10^{-9}$ m <sup>2</sup> /s	Casalini et al. (2011)
$D_o$	Diffusivity of salt	$1.6 \times 10^{-9}$ m <sup>2</sup> /s	Riquelme et al. (2007)
$c_0$	Isotonic osmolarity	300 mOsM	Lemp et al. (2011)
$f_{cr}$	Critical FL concentration	0.2%	Webber and Jones (1986)
$f'_0$	Initial FL concentration	0.259–0.4%	Calculated
$P_o$	Permeability of cornea	$12.1 \times 10^{-6}$ m/s	Braun et al. (2015)
$\epsilon_f$	Napierian extinction coefficient	$1.75 \times 10^7$ m <sup>-1</sup> M <sup>-1</sup>	Mota et al. (1991)
$\sigma_0$	Surface tension	$0.045$ N m <sup>-1</sup>	Nagyová and Tiffany (1999)
$(\partial \Gamma \sigma)_0$	Composition dependence	$0.01$ N/m	Aydemir et al. (2010)
$(\Delta \sigma)_0$	Change in surface tension	$1.74-60.3$ N/m	Calculated
$\ell$	Characteristic length	$0.138-0.412$ mm	Calculated
$U$	Characteristic velocity	$0.0560-0.0990$ mm/s	Calculated
$t_s$	Time scale	$1.75-6.6$ s	Fit interval

### 3.1 Scalings

Zhong et al. (2019) use the following scalings to non-dimensionalize the system of equations governing TF thickness, pressure inside the film, surfactant concentration atop the film, and the transport of solutes in the film. Dimensional quantities are denoted by primes.

$$r' = \ell r, \quad z' = dz, \quad \epsilon = d/\ell, \quad t' = \frac{\ell}{U}t, \quad h' = dh, \quad u' = Uu, \quad v' = \epsilon Uv, \quad (2)$$

$$p' = \frac{\mu U}{\ell \epsilon^2}p, \quad J' = \epsilon \rho U J, \quad \Gamma' = \Gamma_0 \Gamma, \quad c' = c_0 c, \quad f' = f_{cr} f. \quad (3)$$

Dimensional parameters used in the model are summarized in Table 1.

Zhong et al. (2019) choose the scalings for  $U$  and  $\ell$  based on two dimensionless quantities:  $M$ , the (reduced) Marangoni number, and  $S$ , the contribution of surface tension:

**Table 2** Dimensionless parameters that arise from scaling the dimensional fluid mechanics problem. The values given are based upon the values of Table 1,  $d = 3 \mu\text{m}$ ,  $t_s = 3 \text{ s}$ , and  $(\Delta\sigma)_0 = 20 \mu\text{N/m}$

Non-dimensional parameters with typical values			
Parameter	Description	Expression	Value
$\epsilon$	Aspect ratio	$d/\ell$	0.0130
$S$	Contribution of surface tension	$(\sigma_0\epsilon^3)/(\mu U)$	1
$M$	Contribution of Marangoni effect	$\epsilon(\Delta\sigma)_0 \left[ t_s^3/(\sigma_0\mu^3d^3) \right]^{1/4}$	0.275–5.50
$A$	Non-dimensional Hamaker constant	$A^*/[\epsilon(\Delta\sigma)_0d\ell]$	$6.59 \times 10^{-10}$
$P_c$	Permeability of cornea	$(P_oV_wc_0)/(\epsilon U)$	0.0653
$Pe_f$	Péclet number for FL diffusion	$U\ell/D_f$	45.3
$Pe_c$	Péclet number for salt iron diffusion	$U\ell/D_o$	11.0
$Pe_s$	Péclet number for surface diffusion	$\epsilon(\Delta\sigma)_0\ell/(\mu D_s)$	1.54
$\phi$	Non-dimensional Napierian extinction coefficient	$\epsilon_f f_{cr}d$	0.279

$$M = \frac{\epsilon(\Delta\sigma)_0}{\mu U}, \quad S = \frac{\sigma_0\epsilon^3}{\mu U}.$$

In Zhong et al. (2019), the expressions for  $M$  and  $S$  are set equal to unity. We seek to determine the Marangoni number via the optimization. Zhong et al. (2019) used a time scale of 0.0205 s; this is too fast in the context of our data. Therefore, we adapt the model to our problem by choosing new scalings. We will use the fit interval as the time scale on which we assume breakup occurs. We set  $S = 1$  and let the change in surface tension,  $(\Delta\sigma)_0$ , vary in the optimization instead of  $M$  to optimize over dimensional parameters. We determine  $U$  through the time scale of the trial and  $S$  relates  $U$  and  $\ell$ .

The time scale of the model is  $\ell/U$ ; we take the length of the trial as  $t_s$ , and we find  $U = \ell/t_s$ . This gives

$$U = \frac{\sigma_0\epsilon^3}{\mu} = \frac{\sigma_0d^3}{\mu\ell^3}. \tag{4}$$

Equating the two expressions for  $U$  and solving for the length scale gives

$$\ell = \left( \frac{t_s\sigma_0d^3}{\mu} \right)^{1/4}. \tag{5}$$

Now knowing  $\ell$ , this gives  $U$  and  $M$  as

$$U = \left( \frac{\sigma_0d^3}{\mu t_s^3} \right)^{1/4}, \quad M = \epsilon(\Delta\sigma)_0 \left( \frac{t_s^3}{\sigma_0\mu^3d^3} \right)^{1/4}. \tag{6}$$

The non-dimensional parameters that arise as a result of the scalings are given in Table 2.



### 3.2 Lubrication Theory

Due to the small aspect ratio of the thickness of the film to the length along the film, we use lubrication theory to simplify the Navier–Stokes equations. We refer readers to Zhong et al. (2019) for the derivation and a full exploration of the model. We present the results of the derivation and nondimensionalization. The TF is modeled as an incompressible Newtonian fluid on  $0 < r < R_0$  and  $0 < z < h(r, t)$ , where  $h(r, t)$  denotes the thickness of the film. We assume diffusion, advection, osmosis, the Marangoni effect, and evaporation affect the height of the TF in a combination that ultimately leads to FT-TBU.

We model the lipid on the TF surface  $z = h(r, t)$  as a tangentially immobile aqueous/glob interface with higher concentration of lipid on  $0 < r < R_I$  and with a fixed size and concentration. Outside the glob on  $R_I < r < R_0$ , the aqueous/air interface is mobile. Surfactant mass is conserved in the separate regions inside and outside the glob, but the glob acts as a source of surfactant for the mobile region when these regions are considered together.

In axisymmetric coordinates, the fluid velocity in the film is denoted by  $\mathbf{u} = (u, w)$ , where  $u$  and  $w$  are the radial and vertical velocities, respectively. Conservation of mass and momentum for water and solutes in the TF and surfactant along the surface lead to the following system of Eqs. (7–11).

$$\partial_t h + J - P_c(c - 1) + \frac{1}{r} \partial_r (r h \bar{u}) = 0, \tag{7}$$

$$p = -\frac{1}{r} \partial_r (r \partial_r h) - A h^{-3}, \tag{8}$$

$$\partial_t \Gamma = \left[ \text{Pe}_s^{-1} \left( \frac{1}{r} \partial_r (r \partial_r \Gamma) \right) - \frac{1}{r} \partial_r (r u_r \Gamma) \right] B, \tag{9}$$

$$h(\partial_t c + \bar{u} \partial_r c) = \text{Pe}_c^{-1} \frac{1}{r} \partial_r (r h \partial_r c) + J c - P_c(c - 1)c, \tag{10}$$

$$h(\partial_t f + \bar{u} \partial_r f) = \text{Pe}_f^{-1} \frac{1}{r} \partial_r (r h \partial_r f) + J f - P_c(c - 1)f. \tag{11}$$

The kinematic condition is used to arrive at Eq. 7. The solute Eqs. 10, 11 take into account evaporation at the free surface and osmosis at the TF/cornea interface; the derivation follows Jensen and Grotberg (1993). In Eq. 7,  $J$  and  $\bar{u}$  represent the evaporative term and the depth-averaged horizontal fluid velocity, respectively. We discuss options for  $J$  in Sect. 3.3. In Eq. 9,  $u_r$  is the horizontal surface velocity of fluid, and  $B$  is a tanh function used as a smooth approximation to a transition step function between the domains on which different boundary conditions exist for the surfactant concentration,  $\Gamma$ :

$$B(r; R_I, R_W) = \frac{1}{2} + \frac{1}{2} \tanh \left( \frac{r - R_I}{R_W} \right). \tag{12}$$

Here,  $R_I$  is the glob radius, and the transition width  $R_W$  is set to 0.1. Initially, the lipid has a high, constant concentration on  $[0, R_I]$  and low outside, but solute is transported due to tangential flow from the Marangoni effect as time progresses.

The horizontal surface TF fluid velocity  $u_r(r, h, t)$  and average horizontal TF fluid velocity  $\bar{u}$  throughout the film are given by

$$u_r(r, h, t) = -\frac{\frac{1}{2}h^2(\partial_r p)B + M\partial_r \Gamma h B}{B + (1 - B)h}, \quad (13)$$

$$\bar{u} = -\frac{\frac{1}{3}h^2(\partial_r p) \left[ B + \frac{1}{4}h(1 - B) \right] + \frac{1}{2}M\partial_r \Gamma h B}{B + (1 - B)h}. \quad (14)$$

Note that the Marangoni number,  $M$ , multiplies the radial derivative of  $\Gamma$ . The quantity  $\bar{u}$  comprises the combination of pressure gradient-induced Poiseuille flow (due to capillarity), and shear stress-driven Couette flow (due to the Marangoni effect). As the TF is deformed, capillarity increases in relative importance, and the decrease in lipid concentration difference reduces the Marangoni effect.

The derivation of the problem in the linear case for streaks is similar to the axisymmetric case, and more details may be found in Zhong et al. (2019). The non-dimensionalization is the same in both cases.

### 3.3 Evaporation Distributions

Following Zhong et al. (2019), we explore four evaporation distribution choices as listed below.

*Case (a)* TF thinning is assumed to be driven only by tangential flow due to the Marangoni effect; we assume evaporation is irrelevant and exclude it from the model. This case assumes that the thinning occurs on too short a time scale for evaporation to play a role.

*Case (b)* The surfactant distribution is assumed to have no effect on evaporation, and we assume a uniform profile:

$$J' = \rho v', \quad (15)$$

where  $v'$  is a constant thinning rate. The glob may be poorly organized and thus allow evaporation in an amount equal to the lower concentration lipid surrounding it.

*Case (c)* We hypothesize that lipid with a higher concentration is disorganized, and as such does not protect the TF underneath from evaporation. It has been hypothesized that the structure of the lipid layer is crucial to preventing evaporation, and we approximate the complexity of this with our simplification of the evaporation profile (Borchman et al. 2019; King-Smith et al. 2013b; Paananen et al. 2019). It may seem counterintuitive that thicker lipid could allow a higher rate of evaporation than in a thinner region, but it may be seen experimentally (King-Smith et al. 2013b, 2010).

Outside the glob, we assume the lower-concentration lipid is well-organized and provides a sufficient barrier against evaporation for the duration of the trial. We let there be nonzero constant evaporation under the glob and zero evaporation outside the glob, given by:

$$J' = \rho(1 - B)v'. \quad (16)$$

*Case (d)* We assume the glob provides an excellent barrier to evaporation whereas the lipid with lower concentration outside allows TF fluid to evaporate. We choose zero evaporation under the glob and nonzero evaporation outside the glob, given by:

$$J' = \rho B v'. \quad (17)$$

We found that options (b) and (c) were the most successful at fitting breakup instances in the 1–8 s range.

### 3.4 FL Intensity

The following equation gives the nondimensional FL intensity  $I$ , computed from the TF thickness  $h$  and the FL concentration  $f$  (Webber and Jones 1986; Nichols et al. 2012):

$$I = I_0 \frac{1 - \exp(-\phi h f)}{1 + f^2}. \quad (18)$$

Here,  $\phi$  is the nondimensional Napierian extinction coefficient, and  $I_0$  is a normalization factor calculated using model eye measurements (Wu et al. 2015). The nondimensionalization may also be found in Zhong et al. (2019). Once we solve the system of nondimensional equations given either in (7)–(11) for spots or similarly for streaks, we then compute the nondimensional FL intensity  $I$ .

Our in vivo observations (Awisi-Gyau 2020) typically operate in a regime near or slightly above the peak of the  $I$  versus  $f'$  curve. Asymptotic expansions for fixed  $h'$  show that  $I$  decreases quadratically with increasing  $f'$  in the self-quenching regime (Braun et al. 2014).

### 3.5 FL Concentration

FL concentration is typically reported as a percentage in the ocular literature. For a particular FL concentration  $f$  given as a percentage, this quantity is converted to molar as  $f_M$  by

$$f_M = \frac{\rho}{M_w} \frac{f}{100}, \quad (19)$$

where  $\rho$  is the density of water (Table 1) and  $M_w$  is the molecular weight of sodium fluorescein (approximately 376 g/mol). Critical FL concentration  $f_{cr}$ , 0.2%, makes an 0.0053 M solution when dissolved in water. This conversion of  $f_{cr}$  to molar is necessary to compute the dimensionless Napierian extinction coefficient  $\phi$  (Table 2).

### 3.6 Boundary and Initial Conditions

We enforce no flux of fluid or solutes at the outer boundary of the domain,  $r = R_0$ , resulting in homogeneous Neumann conditions for all dependent variables there:

$$\partial_r h(R_0, t) = \partial_r p(R_0, t) = \partial_r c(R_0, t) = \partial_r f(R_0, t) = \partial_r \Gamma(R_0, t) = 0. \quad (20)$$

Similarly, we enforce symmetry at the origin. We assume that a blink restores the TF thickness and solute concentrations to uniform values across the cornea. Thus, the initial conditions are spatially uniform:

$$h(r, 0) = c(r, 0) = 1, \quad f(r, 0) = f_0. \quad (21)$$

The initial pressure is computed from (8) using symmetry. We estimate the initial FL concentration via a separate procedure using model eye calculations and a custom MATLAB code following Wu et al. (2015). The initial TF thickness is estimated by a calculation described in our previous paper (Luke et al. 2020):

$$h'_0 = -\frac{1}{\epsilon_f f'_0} \log \left( 1 - \frac{I_b - I_s}{I_0^*} \left[ 1 + (f'_0/f_{cr})^2 \right] \right), \quad (22)$$

where  $I_b$  and  $I_s$  are averages of intensity values in the region of breakup from the high and low light setting image values, respectively, and  $I_0^*$  is a scaling of  $I_0$  by the ratio of an average of intensity values in the region of breakup from the first high light setting image to the last low light setting image. We use  $d = h'_0$  to give the nondimensional initial thickness value  $h_0 = 1$ . From this measurement  $h'_0$ , we subtract one micron for the thickness of the glycocalyx (Luke et al. 2020; King-Smith et al. 2004).

The nondimensionalization results in initial values of  $\Gamma = 1$  under the glob and  $\Gamma = 0.1$  outside the glob. Written using the transition function  $B$ , the initial condition for  $\Gamma$  is

$$\Gamma(r, 0) = 1 \cdot [1 - B(r)] + 0.1 \cdot B(r). \quad (23)$$

## 4 Optimization

We follow the process described in Luke et al. (2020); a summary is given below.

### 4.1 Data Preparation

The high light setting images in each trial are converted from RGB color images to grayscale, smoothed with a Gaussian filter, and stabilized using the Purkinje reflex (Awisi-Gyau 2020), a bright artefact reflecting the light source, via custom MATLAB codes. We select a region of interest in the last image where FT-TBU forms. FT-TBU instances are chosen to be a simple shape (roughly linear or circular), dark enough (from monitoring the local minimum FL intensity), and developing on an intermediate

time scale (between 1 and 8 s). We sample pixel intensities from every bright image in the trial on a line segment across a spot or streak FT-TBU at an orientation that we choose via custom MATLAB codes. These codes have been updated from those used in Luke et al. (2020) to allow for drift of the TF to be captured: the line segment for data extraction can be drawn manually to follow the movement of the TF fluid. The data are further stabilized by aligning the minimum of each time level with the origin; the data are shifted by less than 0.1 mm on average.

We fit the theoretical FL intensity function to a subset of experimental FL intensity data from the video; most optimizations use 6–10 time levels from the trial. The starting frame is the last frame before the FL intensity data starts dropping or the first high light setting image in the trial if thinning begins instantaneously. In some trials, there is evidence that thinning has begun before the light source is turned up, and as a result there is significant decrease in FL intensity in the center of breakup in the first bright image. To remedy this, we introduce one or two “ghost” time levels, which allows the model solution to start with a uniform time level that is not compared to the experimental FL data. This is a product of the time scale of our data; sometimes a few seconds elapse between the last blink and full illumination of the cornea. These are added to match the rate of thinning seen between experimental time levels. With this choice, we capture additional information about the thinning, such as the initial magnitude of the fluid flow. The last frame is the final frame before the FL intensity data stops decreasing.

For the purpose of fitting, we define FT-TBUT as the time at which the FL intensity stops decreasing. The pixel intensity values typically stop decreasing between 30 and 50 using a 0–255 (8 bit) scale at the illumination settings used.

## 4.2 Optimization Problem

We discuss the optimization problem for spots; the streak version is similar. Expressed in continuous variables, we seek to minimize  $\|I_{\text{th}}(r, t) - I_{\text{ex}}(r, t)\|_2^2$  over the parameters  $v'$ , the evaporation rate,  $R'_f$ , the radius of the glob of lipid, and  $(\Delta\sigma)_0$ , the change in surface tension created by lipid concentration gradients. Here,  $r$  corresponds to the distance from the center of the spot or streak TBU, and  $t$  corresponds to the time after the light source brightness has been increased to the high setting. Both parameters have been nondimensionalized with the scalings given in Sect. 3.1. The norm is over all  $r \in [0, R]$  and  $t \in [0, T]$  excluding any “ghost” time levels from the theoretical FL intensity, where  $R$  corresponds to the radius of the FT-TBU and  $T$  corresponds to the total length of the trial. As in Luke et al. (2020), we widen the computational domain by a factor of three in most cases (in  $[0, R_0]$ ) and compare  $I_{\text{ex}}$  with the subset of  $I_{\text{th}}$  corresponding to  $[0, R]$  to reduce the sensitivity of our optimization to our choices of initial guesses and boundary conditions.

The optimization problem for spots may be written

$$\operatorname{argmin}_{v', R'_f, (\Delta\sigma)_0} \|I_{\text{th}}(r, t; v', R'_f, (\Delta\sigma)_0) - I_{\text{ex}}(r, t)\|_2^2, \quad (24)$$

where  $R'_l$  and  $r$  are replaced with  $X'_l$  and  $x$  in the Cartesian case for fitting linear FT-TBU. The theoretical intensity,  $I_{th}$ , is computed after solving the coupled partial differential equations system for film thickness,  $h$ , and fluorescein concentration,  $f$ .

### 4.3 Numerical Method and Stopping Criterion

Following our previous work, we solve the TF dynamics model (7–11) using an application of the method of lines. The spatial derivatives are discretized using collocation at second-kind Chebyshev points (Trefethen 2000, Canuto et al. 2012). We enforce symmetry at the origin to avoid singularities in the axisymmetric case; this is achieved by expanding all operators in  $r$  and dropping odd derivatives. The resulting system of differential algebraic equations for the dependent variables at the grid points is solved using `ode15s` in MATLAB (MathWorks, Natick, MA, USA). For the optimization, we use a nonlinear least squares minimization implemented by `lsqnonlin` in MATLAB with the trust-region reflective algorithm (Nocedal and Wright 2006) and we added a second-order finite difference approximation of the Jacobian (LeVeque 2007), which improved performance. In this work, we found that the Levenberg–Marquardt and trust-region reflective algorithms produce similar optimal values, but the latter is often preferable for its reduced average computation time. For the mixed-mechanism fits we report, the computation times for the optimizations varied from 3 to 111 min. The longer computation times correspond to optimizations where we selected the Levenberg–Marquardt algorithm; all optimizations conducted with the trust-region reflective algorithm took 12 min or less.

To generate initial guesses for optimization, forward computations were conducted until the theoretical dynamics were close to the experimental. For each instance, the solver stopped because the change in residual was less than the specified tolerance. Optimization tolerances of roughly the square root of the ODE solver tolerances were used.

## 5 Results

We begin by presenting characteristic nondimensional solutions with evaporation Cases (b) and (c) presented in Sect. 3.3. We then show the results of fitting breakup instances with our mixed-mechanism model that incorporates Marangoni effect-induced tangential flow and evaporation. Examples of data extractions and fits of the various dynamics are shown. For comparison, we also fit with evaporation only (Luke et al. 2020) and zero evaporation, which is Case (a). The fitting results for these models are summarized in Sects. 5.6 and 5.7, respectively. A study of fluid profiles and the effect of varying the initial FL concentration on the fitting procedure follow. Example fits for the evaporation-only and zero evaporation models are shown in Online Resource 1.

## 5.1 Nondimensional Solutions (Without Fitting)

In Fig. 3, we plot the nondimensional axisymmetric solutions for the film thickness  $h$ , fluid pressure  $p$ , osmolarity  $c$ , fluorescein concentration  $f$ , surfactant concentration  $\Gamma$ , and the computed theoretical fluorescent intensity  $I$ . In the top left plot of both subfigures, each theoretical quantity is plotted only on half the domain to allow for more direct comparison: FL intensity is shown as solid lines on the left half, and TF thickness is shown as dashed lines on the right half. The characteristic length along the film for this case is about 0.23 mm, so the nondimensional spot size is a little under 0.5.

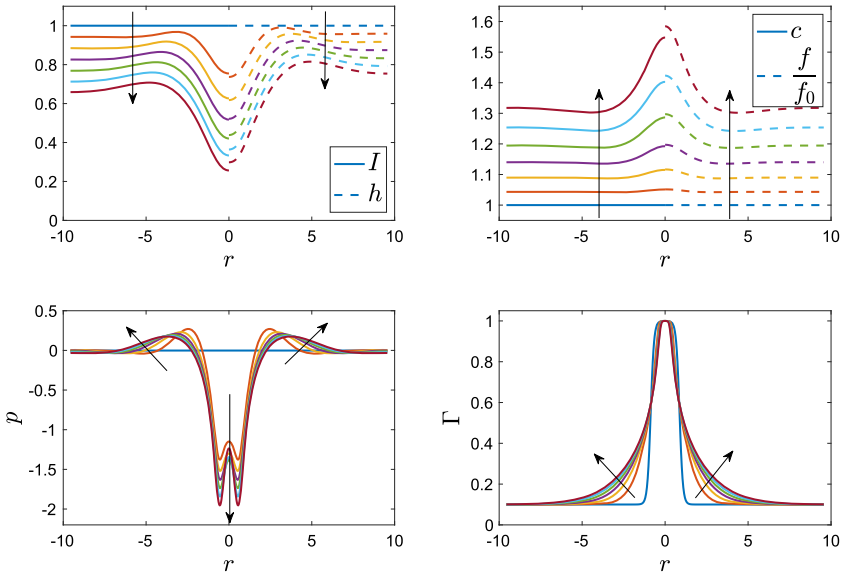
Figure 3a shows Case (b) evaporation, while Fig. 3b gives the solutions for Case (c). We note the characteristic differences in the solution profiles as a result. For all other conditions held the same, the intensity and TF thickness decrease further in Case (b) as compared to Case (c). Osmolarity and FL concentration increase more in Case (b).

## 5.2 Mixed-Mechanism Fitting

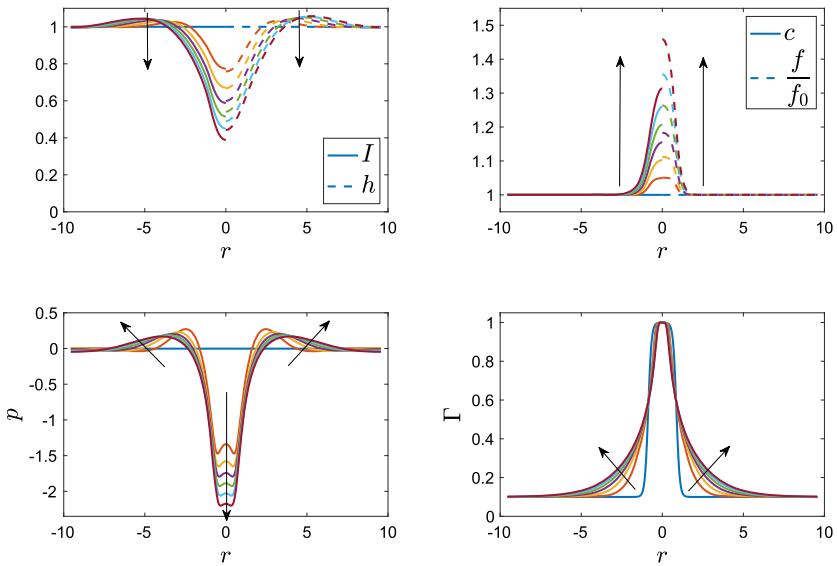
We fit in vivo intensity measurements with the mixed-mechanism model discussed in Sect. 3. The results are reported in Tables 3 and 4. In Table 3, the first column lists the subject (S) number, visit (v) number and (t) trial number, and a + denotes using a “ghost” first time level. The second column gives the FT-TBU location and shape. The location is given as a clock reading taken from the center of the pupil. A — denotes streak FT-TBU, and a  $\circ$  is a spot. The third and fourth columns give the initial TF thickness and FL concentration estimates as  $h'_0$  and  $f'_0$ , respectively. Images showing the FT-TBU instances can be found in Sect. 2. The streaks are fit with our Cartesian model and the spots are fit with our axisymmetric model. Both the experimental and theoretical FL intensities are normalized to the average of the first time level before fitting, and the osmolarity is reported as a multiple of the isotonic concentration. The thinning rate, glob size, and change in surface tension are adjusted to accomplish the fit. Sections 5.3, 5.4, and 5.5 show examples of the experimental data, fits, and resulting theoretical solutions using the optimal parameters found by nonlinear least squares minimization.

Table 4 reports the characteristic length, time scale, and velocity used as scalings in the nondimensionalization of each optimization. The optimal Marangoni number  $M$  is computed using the optimal change in surface tension,  $(\Delta\sigma)_0$  (see equation 6). The final column reports the residual as the final value of the optimization objective function and gives the 2-norm of the difference of the experimental and optimal theoretical FL intensity in parentheses.

We separate the results into three categories: Marangoni effect-dominated, intermediate, and evaporation-dominated. The first is categorized by strong outward flow near the glob edge for the duration of the trial, relatively small evaporation rates, and Marangoni numbers between 2.83 and 5.5 (see Table 4). This nondimensional value quantifies the relative strength of the Marangoni effect, and a number above one conveys significance. These large Marangoni numbers coupled with the small evaporation



(a) Case (b) evaporation



(b) Case (c) evaporation

**Fig. 3** (Color figure online) Nondimensional axisymmetric solutions for  $v' = 15 \mu\text{m}/\text{min}$ ,  $R'_l = 0.1 \text{ mm}$ ,  $(\Delta\sigma)_0 = 20 \mu\text{N}/\text{m}$ ,  $f'_0 = 0.3\%$ , and  $d = 3 \mu\text{m}$ . The Marangoni number is 2.61. Each curve represents a different time level and arrows indicate increasing time. Intensity has been normalized



rates signal the relative dominance of the Marangoni effect over evaporation. The first five instances in Table 3 fall into this category.

The last two instances in Tables 3 and 4 are evaporation-dominated. Like all other trials, their flow is initially directed outwards, but becomes inward almost immediately. These trials also exhibit relatively large evaporation rates and Marangoni numbers under one, a sign that the Marangoni effect is not important. Taken together and recalling that inward flow is characteristic of the fits seen in Luke et al. (2020), we label these two instances as evaporation-dominated. In fact, the S9v2t5 4:00 spot is also fit well with the evaporation-only model; see Sect. 5.6.

We label a single instance, the S9v2t1 3:00 streak, as intermediate. This trial exhibits a balance of evaporation and the Marangoni effect, as seen by a relatively large evaporation rate and a Marangoni number of 1.48. Like the evaporation-dominated instances, the depth-averaged flow changes directions early in the trial, but the initial magnitude of the flow is much larger in comparison, and the surface velocity is directed outwards for the duration of the trial. This trial is listed between the two previously mentioned categories in Tables 3 and 4.

### 5.3 Marangoni Effect-Dominated Thinning

Marangoni effect-dominated thinning is characterized by strong, outward flow, and small evaporation rates. Figure 5 shows the fit to the S10v1t6 12:30 spot as an example; the data for the fit are shown in Fig. 4.

The S10v1t6 12:30 spot is a distinctive breakup instance because it is partially hidden by eyelashes and develops very quickly in the later half of the trial, as seen in Fig. 4b. We fit this instance with two ghost time levels for several reasons. Once the eyelash and lid move so the location where FT-TBU forms is visible, there is already substantial decrease in the measured FL intensity in the center of breakup—a 50% difference as compared to the edges of the breakup region. If we compare this to the S18v2t4 7:30 spot, which we choose to fit with a single ghost time level, the latter shows only a 20% difference between the measured FL intensity at the center of breakup and at the edges of the breakup region (see Fig. 2 of Online Resource 1). Secondly, fitting the S10v1t6 12:30 spot instance with a single ghost time level results in a 21% increase in the residual, indicating a significantly worse fit.

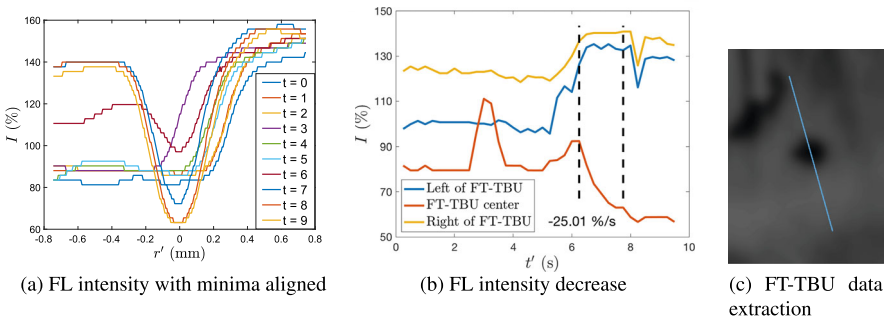
The optimal change in surface tension found by the optimization is by far the largest of all instances:  $60.3 \mu\text{N/m}$ . Correspondingly, the Marangoni number is large, at 5.5. This trial is characterized by significant tangential flow driven by the Marangoni effect that persists throughout the duration of the fit. The magnitude of the flow is more than double any other instance reported in this work. As seen in Table 3, the S10v1t6 12:30 spot is fit with the smallest evaporation rate of all trials; this fact along with the strength of the flow suggests that the Marangoni effect dwarfs evaporation in terms of importance. The theoretical osmolarity peaks at a dimensional value of 390 mOsM in the center of breakup, which is relatively small in comparison with other instances (see Table 3), and likely is a result of the short time span of the trial and the slow nature of osmosis. All the Marangoni effect-dominated instances show smaller maximum salt concentration values than the transitional or evaporation-dominated cases;

**Table 3** Results from fitting three parameters. The optimized parameters are the evaporative thinning rate  $v'$ , the glob radius  $R'_f$  or glob half-width  $X'_f$ , and the change in surface tension  $(\Delta\sigma)_0$ . The minimum values of both the experimental and theoretical FL intensity and the theoretical thickness are reported. Above the S9v2t1 trial, the instances are Marangoni effect-dominated, S9v2t1 is a transitional case, and the instances below the S9v2t1 trial are evaporation-dominated

Trial	FT-TBU ID	$h_0$ ( $\mu\text{m}$ )	$f'_0$ (%)	$v'$ ( $\frac{\mu\text{m}}{\text{min}}$ )	$R'_f, X'_f$ (mm)	$(\Delta\sigma)_0$ ( $\frac{\mu\text{N}}{\text{m}}$ )	Min $I_{ex}$	Min $I_{th}$	Min $h'_{th}$ ( $\mu\text{m}$ )	Max $c_{th}$
S9v1t4 <sup>+</sup>	4:00 —	3.32	0.324	6.26	0.0750	20.3	0.106	0.398	1.32	1.23
S10v1t6 <sup>++</sup>	12:30 ◦	3.08	0.293	5.92	0.0791	60.3	0.0635	0.0546	0.165	1.30
S13v2t10 <sup>+</sup>	6:30 —	3.59	0.259	13.6	0.0786	20.0	0.116	0.286	1.15	1.55
S18v2t4 <sup>+</sup>	7:30 ◦	2.48	0.363	15.1	0.0808	25.6	0.143	0.115	0.410	1.86
S27v2t2 <sup>+</sup>	5:00 —	1.91	0.4	6.11	0.0525	25.1	0.357	0.469	0.906	1.14
S9v2t1	3:00 —	5.01	0.292	30.3	0.140	9.85	0.0826	0.258	2.03	1.77
S9v2t5	4:00 ◦	2.10	0.299	26.2	0.121	4.05	0.132	0.290	1.10	1.93
S9v2t5	4:30 ◦	2.33	0.299	36.9	0.123	1.74	0.0600	0.226	1.28	2.32

**Table 4** Scalings used in the nondimensionalizations of the model in each optimization. A + denotes using a “ghost” time level. Above the S9v2t1 trial, the instances are Marangoni effect-dominated, S9v2t1 is a transitional case, and the instances below the S9v2t1 trial are evaporation-dominated

Trial	FT-TBU ID	Length scale $\ell$ (mm)	Time scale $t_s$ (s)	Char. velocity $U$ ( $\frac{\text{mm}}{\text{s}}$ )	$M$	Res. (norm)
S9v1t4 <sup>+</sup>	4:00 —	0.273	4.6	0.0593	3.06	7.49 (2.32)
S10v1t6 <sup>++</sup>	12:30 ◦	0.198	2	0.0990	5.50	4.19 (1.87)
S13v2t10 <sup>+</sup>	6:30 —	0.287	4.4	0.0652	2.83	4.16 (1.57)
S18v2t4 <sup>+</sup>	7:30 ◦	0.191	2.75	0.0695	3.36	8.13 (2.54)
S27v2t2 <sup>+</sup>	5:00 —	0.138	1.75	0.0789	2.91	3.75 (1.53)
S9v2t1	3:00 —	0.412	6.6	0.0624	1.48	9.19 (2.59)
S9v2t5	4:00 ◦	0.179	3.2	0.0560	0.653	2.54 (1.08)
S9v2t5	4:30 ◦	0.196	3.4	0.0577	0.275	6.14 (2.00)



**Fig. 4** (Color figure online) Extracted data for the S10v1t6 12:30 spot. In (c), the image has been brightened and contrast-enhanced

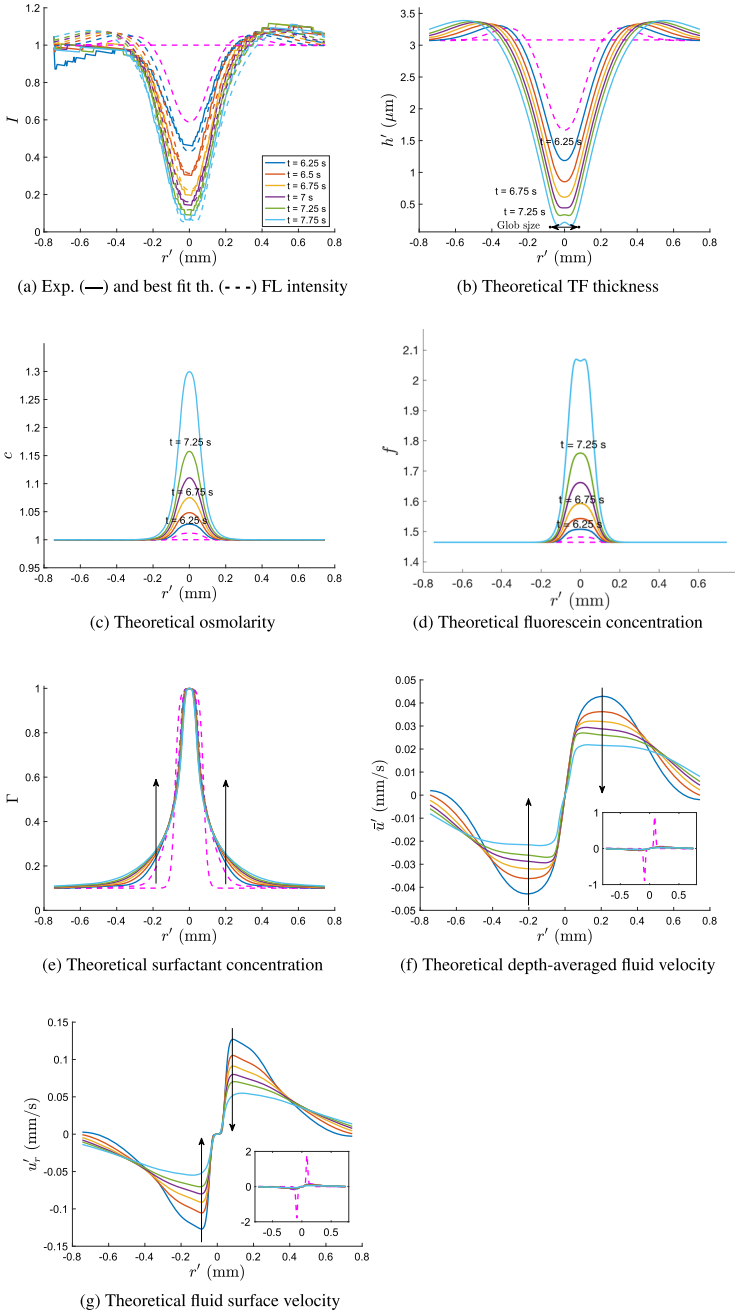
the relatively small amount of evaporation in this first category correlates with a small increase in osmolarity.

All instances recorded in Table 3 are fit well with either evaporation profile Case (b) or (c); we also fit the S18v2t4 7:30 spot with Case (d). The results are shown in Tables 1 and 2 and Figs. 1 and 2 of Online Resource 1. By switching from Case (c) to Case (d), the fit was improved by less than 1%, suggesting that evaporation is not the most important mechanism driving thinning in this instance.

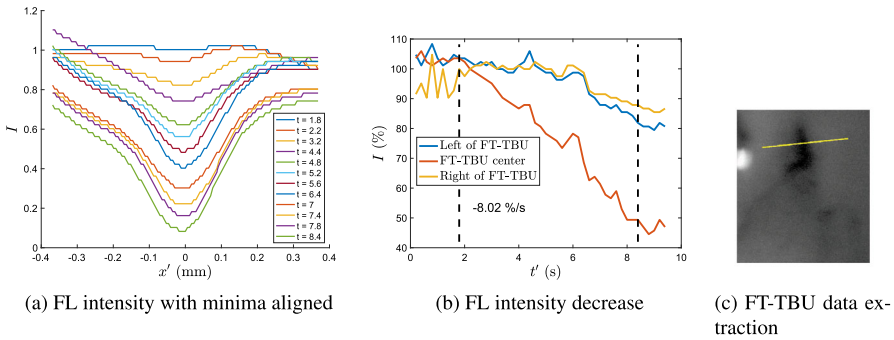
### 5.4 Transitional Thinning

Transitional breakup instances are characterized by thinning that is initially dominated by the Marangoni effect, but then becomes evaporation-dominated as the relative importance of the Marangoni effect diminishes as the trial progresses. We show the fit for the S9v2t1 3:00 streak as an example.

In Fig. 7d, we see from the sign of  $\bar{u}$  near the glob edge that flow is initially directed outward, indicative of the Marangoni effect, but then quickly reverses direction and



**Fig. 5** (Color figure online) S10v1t6 12:30 spot best fit results (Case (c) evaporation). FL intensity has been normalized. Theoretical osmolarity is given as a fraction of the isotonic value. Arrows indicate increasing time



**Fig. 6** (Color figure online) Extracted data for the S9v2t1 3:00 streak. In (c), the image has been brightened and contrast-enhanced

becomes healing flow, indicative of evaporation-driven thinning (Peng et al. 2014a; Luke et al. 2020). This illustrates the fact that Marangoni flow dominates the early thinning of the breakup center, but that evaporation takes over later in the trial. In contrast, the flow is always directed outward far from the center of breakup. This instance has a Marangoni number of 1.48, illustrating the moderate importance of the Marangoni effect. The maximum osmolarity is estimated at a value of 531 mOsM; this is an intermediate value when compared to the other instances recorded in Table 3. At 6.6s, this is the longest trial reported in this paper, the duration of which may allow the increase in salt concentration.

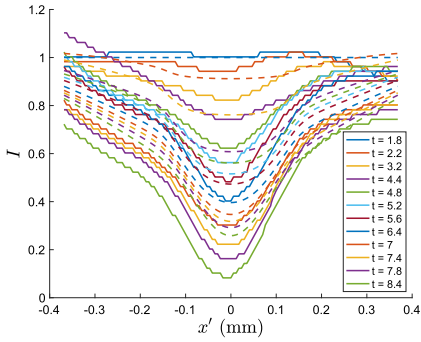
### 5.5 Evaporation-Dominated Thinning

The S9v2t5 4:00 spot is an example of relatively weak Marangoni effect in comparison with evaporation. The change in surface tension is  $4.05 \mu\text{N/m}$  and the Marangoni number is 0.653. A Marangoni number below one suggests lipid-driven tangential flow plays a relatively weak role in causing thinning.

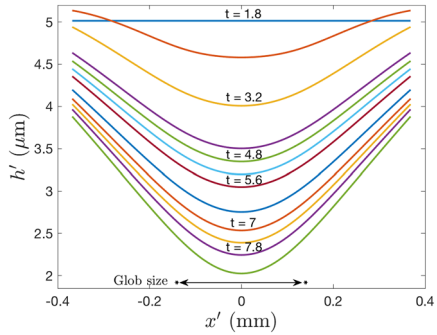
Both  $\bar{u}$  and  $u_r$  in Fig. 9c, d show outward flow near the edge of the glob in the first time level that quickly changes to inward, healing flow. This healing flow is stronger in magnitude than the weak, outward tangential flow at the edges of the domain. The evaporation rate of this instance is higher compared to others, as evaporation must overcome the inward flow to create the spot. The scale of the initial outward flow is much smaller than that described in Sects. 5.3 and 5.4, further evidence that the Marangoni effect plays a weak role in thinning the TF in this instance. The maximum theoretical osmolarity, 579 mOsM, is nearly twice the isotonic value. The two instances we categorize as evaporation-dominated show the highest maximum osmolarity values; this suggests that significant evaporation is related to a large increase in osmolarity.

### 5.6 Evaporation-Only Model

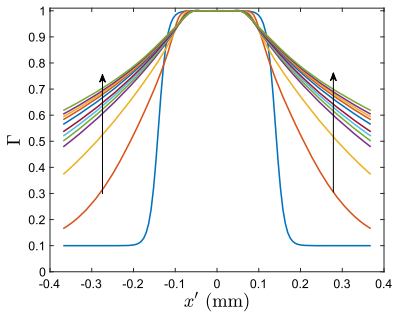
We fit the breakup instances recorded in Tables 3 and 4 with an evaporation-only model when possible (some fits were not successful). This model uses a Gaussian



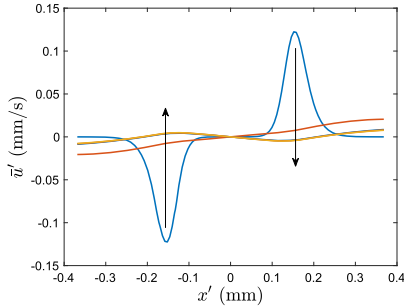
(a) Exp. (—) and best fit th. (- - -) FL intensity



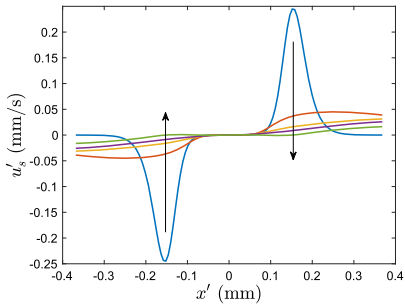
(b) Theoretical TF thickness



(c) Theoretical surfactant concentration

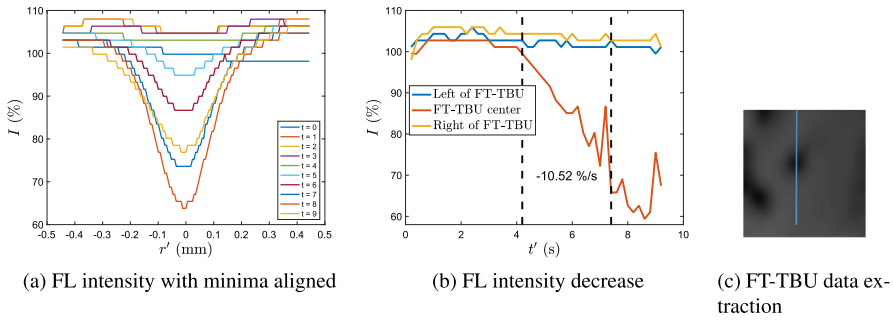


(d) Theoretical depth-averaged fluid velocity

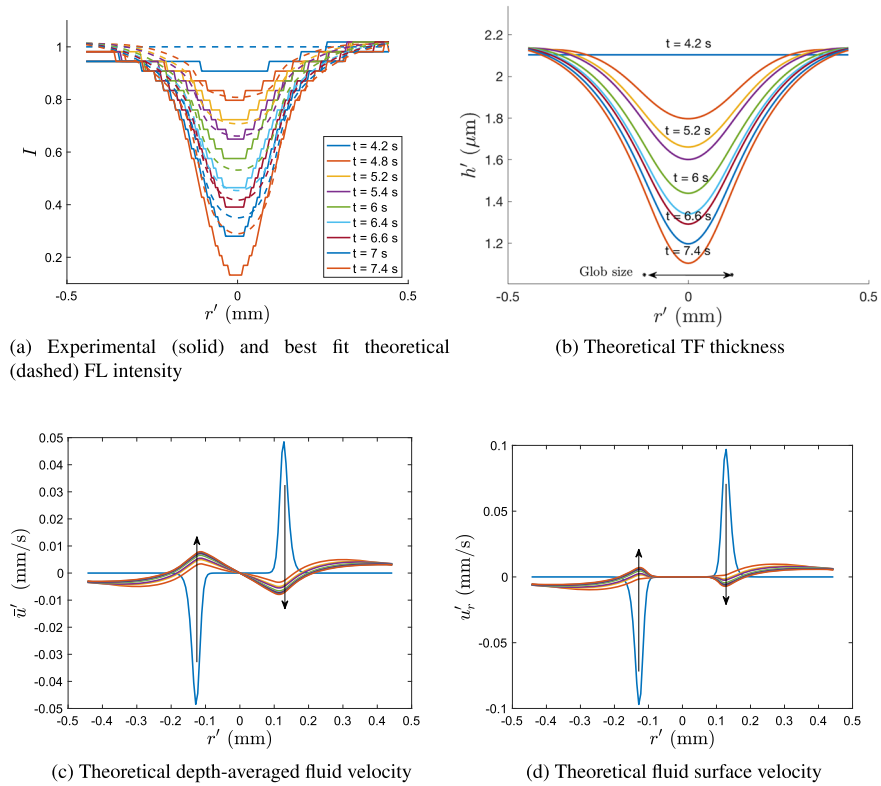


(e) Theoretical fluid surface velocity

**Fig. 7** (Color figure online) S9v2t1 3:00 streak best fit results (Case (c) evaporation). FL intensity has been normalized. Theoretical osmolarity is given as a fraction of the isotonic value. Arrows indicate increasing time



**Fig. 8** (Color figure online) Extracted data for the S9v2t5 4:00 spot. In (c), the image has been brightened and contrast-enhanced



**Fig. 9** (Color figure online) S9v2t5 4:00 spot best fit results (Case (c) evaporation). FL intensity has been normalized. Theoretical osmolarity is given as a fraction of the isotonic value. Arrows indicate increasing time

distribution for evaporation; the parameters that are adjusted are the peak thinning rate,  $v'_{\max}$ , background thinning rate,  $v'_{\min}$ , and Gaussian distribution width,  $r'_w/x'_w$ . We record the results in Table 5. Most values of the optimal evaporation rates are at the top end of what may be considered realistic (Nichols et al. 2005), and some are above what we think is possible (over  $40 \mu\text{m}/\text{min}$ ). This is strong evidence that evaporation alone cannot cause thinning occurring in this short time. It is important to note that Nichols et al. (2005) recorded overall thinning rates, which may underestimate the evaporation rate if inward healing flow slows thinning. We compare an average of the overall thinning rates from our models,  $\partial h'/\partial t'$ , with this experimental data in Sect. 6.

An example fit can be seen for the S18v2t4 7:30 spot in Fig. 4 of Online Resource 1. The optimal evaporation rate is  $53.3 \mu\text{m}/\text{min}$  (see Table 5), which is well above what has been recorded for evaporation. In contrast, this instance is fit well with the mixed-mechanism model (see Table 3).

The S10v1t2 8:00 streak is an instance where the optimal parameters from a fit using the mixed-mechanism model suggest the Marangoni effect plays essentially no role in causing the thinning. The optimal change in surface tension is  $0.0380 \mu\text{N}/\text{m}$ , and the corresponding Marangoni number is  $9.25 \times 10^{-3}$ . In comparison, fitting this instance with the evaporation-only model results in a realistic thinning rate of  $19.3 \mu\text{m}/\text{min}$  and a better fit (see Table 5). This suggests evaporation alone dominates the thinning in this instance. The corresponding data and fit can be seen in Figs. 5 and 6 of Online Resource 1.

## 5.7 Zero Evaporation Model

In order to determine whether evaporation is necessary in the instances we study, we fit the data with a model that excludes evaporation. Successful fits are recorded in Table 6. While the parameter values are reasonable, the residuals of the fits are far higher than those given by the mixed-mechanism model. There is rapid change in the theoretical FL intensity and TF thickness in the beginning, but the decrease slows and cannot capture the behavior of the later experimental data. Two example fits are shown in Figs. 7 and 8 of Online Resource 1, respectively: the S10v1t6 12:30 spot and the S18v2t4 7:30 spot. Comparing Tables 3 and 6, we see that the optimal values for both  $(\Delta\sigma)_0$  and  $R'_l$  for the S10v1t6 12:30 spot are fairly similar. However, the fit shown in Sect. 5.3 captures the qualitative nature of the data in the last few time levels better, as the theoretical intensity for the Marangoni effect-only model shown in Online Resource 1 exhibits an upturn near the center of breakup. Further, the residual is 6% smaller in the mixed-mechanism model case as compared with the Marangoni effect-only model fit. The mixed-mechanism fit for the S10v1t6 12:30 spot exhibits Marangoni effect-dominated flow; the relatively successful zero-evaporation fit to this instance is strong support of this interpretation. In contrast, the S18v2t4 7:30 spot is an intermediate case where both evaporation and the Marangoni-effect play important roles in causing the thinning; this is seen in the relatively poor fit to the data when evaporation is turned off.



**Table 5** Results from fitting three parameters with an evaporation-only model with a Gaussian evaporation profile. A + denotes a “ghost” time level was used. The subject (S) number, visit (v) number and (t) trial number are listed, and the FT-TBU location is a clock reading taken from the center of the pupil. A — denotes streak FT-TBU, and a o is a spot. The initial TF thickness and FL concentration estimates are given. The optimized parameters are the peak evaporative thinning rate  $v'_{max}$ , the background evaporative thinning rate  $v'_{min}$ , and the Gaussian evaporation profile radius or half-width  $r'_{w}, x'_{w}$ . The minimum values of both the experimental and theoretical FL intensity and the theoretical thickness are reported

Trial	FT-TBU ID	$h'_0$ ( $\mu\text{m}$ )	$f'_0$ (%)	$v'_{max}$ ( $\frac{\mu\text{m}}{\text{min}}$ )	$v'_{min}$ ( $\frac{\mu\text{m}}{\text{min}}$ )	$r'_{w}, x'_{w}$ (mm)	Min $I_{ex}$	Min $I_{th}$	Min $h'_{th}$	Max $c_{th}$
S9v1t4 <sup>+</sup>	4:00 —	3.32	0.324	33.5	4.32	0.110	0.119	0.206	1.49	2.39
S9v2t1	3:00 —	5.01	0.292	45.3	5.08	0.0858	0.0826	0.215	2.70	2.40
S9v2t5	4:00 o	2.10	0.299	37.7	-0.584	0.0840	0.138	0.281	1.21	1.96
S10v1t2	8:00 —	2.17	0.255	19.3	1.69	0.0629	0.133	0.231	0.979	2.14
S13v2t10 <sup>+</sup>	6:30 —	3.59	0.259	40.0	8.70	0.117	0.116	0.151	1.27	2.99
S18v2t4 <sup>+</sup>	7:30 o	2.48	0.363	53.3	11.9	0.100	0.143	0.0756	0.704	3.49
S27v2t2 <sup>+</sup>	5:00 —	1.91	0.4	35.3	2.31	0.0925	0.340	0.340	1.07	1.80

**Table 6** Results from fitting two parameters with a zero evaporation model. A + denotes a “ghost” time level was used. The subject (S) number, visit (V) number, and (t) trial number are listed, and the FT-TBU location is a clock reading taken from the center of the pupil. A — denotes streak FT-TBU, and a o is a spot. The initial TF thickness and FL concentration estimates are given. The optimized parameters are the change in surface tension ( $\Delta\sigma$ )<sub>0</sub> and the glob radius  $R'_J$  or half-width  $X'_J$ . The minimum values of both the experimental and theoretical FL intensity and the theoretical thickness are reported as well as the Marangoni number

Trial	FT-TBU ID	$h'_0$ (μm)	$f'_0$ (%)	$(\Delta\sigma)_0$ ( $\frac{\mu\text{N}}{\text{m}}$ )	$R'_J, X'_J$ (mm)	Min $I_{ex}$	Min $I_{th}$	Min $h'_{th}$	$M$
S10v1t6++	12:30 o	3.08	0.293	60.7	0.0624	0.0635	0.0714	0.182	5.54
S13v2t10+	6:30 —	3.59	0.259	43.0	0.119	0.116	0.371	1.16	6.07
S18v2t4+	7:30 o	2.48	0.363	37.2	0.125	0.143	0.316	0.677	4.88
S27v2t2+	5:00 —	1.91	0.4	25.2	0.0647	0.340	0.625	1.11	2.92

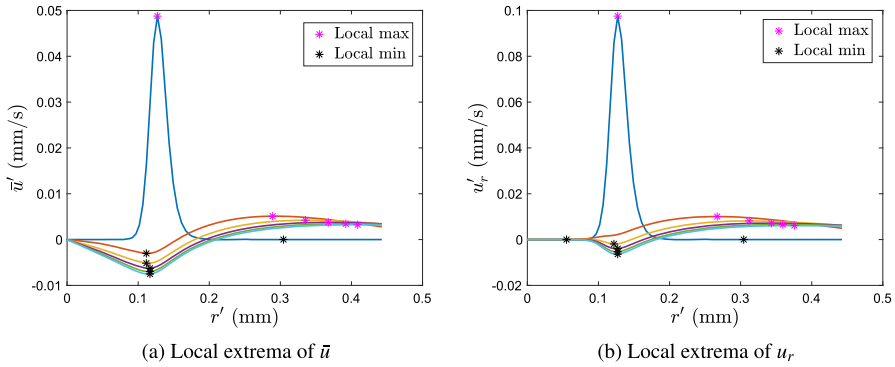
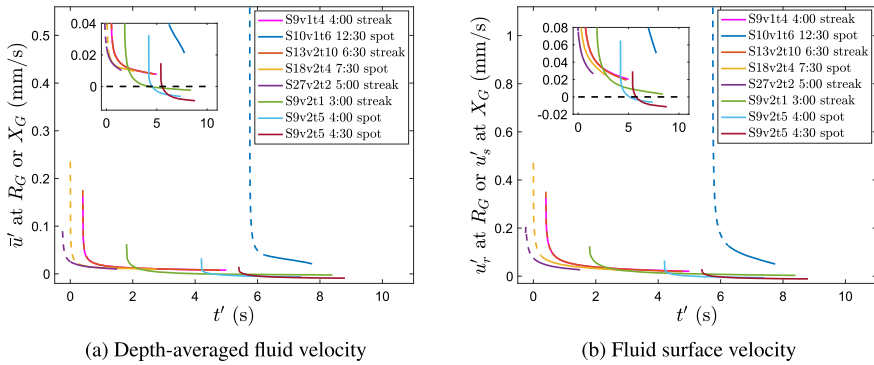


Fig. 10 (Color figure online) Local extrema for the S9v2t5 4:00 spot

### 5.8 Fluid Flow Profiles

The theoretical fluid profiles  $\bar{u}$  and  $u_r$  or  $u_s$  that result from an optimization both illustrate the dynamic nature of the thinning and reveal the relative importance of the Marangoni effect and evaporation. Figures 5f, g and 7d, e show the fluid velocity profiles for the S10v1t6 12:30 spot and S9v2t1 3:00 streak, respectively. As previously discussed, the S10v1t6 12:30 spot exhibits strong tangential flow for the duration of the fit, while  $\bar{u}$  for the S9v2t1 3:00 streak transitions from strong outward to weakly inward flow near the glob edge with slightly stronger outward flow near the edges of the domain. Figure 10 shows an example of transitional thinning in which the inward flow near the glob rises in importance and overtakes the outward flow away from the glob by the end of the trial. We mark the spatial locations of the relative extrema; note that the maxima move significantly to the right over time, indicating that the strongest outward flow moves to the edge of the domain as the spot forms and widens slightly. Near the glob edge, healing flow forms and acts in a narrow spatial region for the majority of the trial. Looking at  $\bar{u}$  and  $u_r$  or  $u_s$  helps us categorize the three example instances in Sects. 5.3, 5.4, and 5.5 as Marangoni effect-dominated, transitional, and evaporation-dominated thinning, respectively.

We investigate and compare the fluid flow profiles of all eight mixed-mechanism instances at the edge of the glob, which is given by  $R_G = R_I + R_W$ , the glob radius + the transition width, or  $X_G = X_I + X_W$ , the half-width + the transition width (depending on spot or streak). By recording  $\bar{u}$  and  $u_r$  or  $u_s$  at  $R_G$  or  $X_G$ , we ensure that our measurement is outside of the glob. As previously mentioned, the S10v1t6 12:30 spot exhibits the strongest flow of any instance by more than a factor of two. Both  $\bar{u}$  and  $u_r$  or  $u_s$  of each instance decrease significantly in magnitude in less than a second; this is evidence of the rapidly-acting Marangoni effect that wanes in importance as the glob spreads out. The inset of Fig. 11a shows that three trials exhibit flow at the glob edge that begins outward and then turns inward. These are the S9v2t1 3:00 streak, which we categorize as transitional thinning, and the S9v2t5 4:00 and 4:30 spots, which we designate as evaporation-dominated thinning. This inward flow



**Fig. 11** (Color figure online)  $\bar{u}$  and  $u_r$  at  $R_G = R_I + R_W$  or  $u_s$  at  $X_G = X_I + X_W$ . Dashed lines indicate ghost time levels and solid lines indicate fit times. Insets: a close-up near the origin, with a dashed line at zero

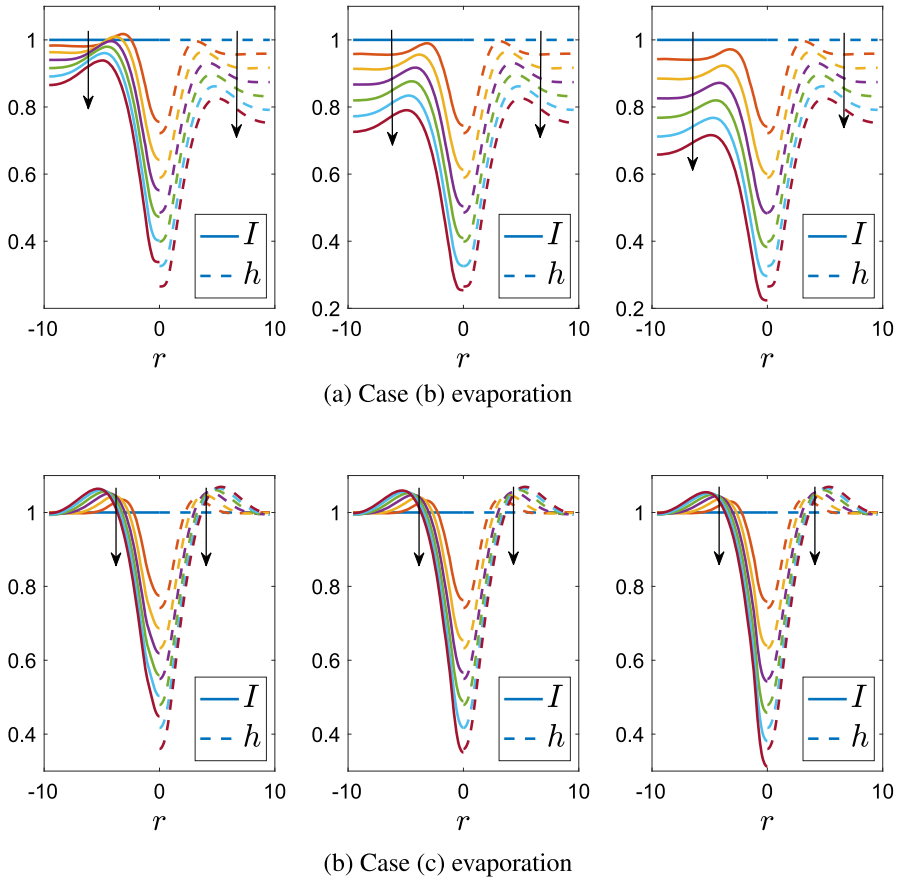
at the glob edge indicates that capillary flow has overtaken tangential flow, and thus evaporation has become or is the dominant mechanism.

### 5.9 Effect of Initial FL Concentration on Fitting

As has been discussed elsewhere (Nichols et al. 2012; Braun et al. 2014, 2015; Luke et al. 2020), the FL concentration affects the relationship between FL intensity and TF thickness and can complicate interpretation of results. In particular, we investigate how the initial FL concentration estimate we obtain and fix during our optimization procedure can affect our fits. Figure 12 shows the qualitative and quantitative similarities of normalized theoretical TF thickness and FL intensity. Each subfigure shows plots for three different initial FL concentration estimates: 0.1%, 0.2%, and 0.3%. The initial FL concentration estimates for the results shown in Table 3 have a mean and standard deviation of  $0.316 \pm 0.0451\%$ . Thus, our fits should exhibit dynamics most like the right-most plot in both Fig. 12a and 12b. We see that for initial FL concentrations near 0.3%, TF thickness is initially ahead of FL intensity at the origin, but falls behind at later time levels.

Figure 13 shows normalized minimum theoretical FL intensity plotted against time for varying initial FL concentration values. A dashed line indicates normalized minimum theoretical TF thickness, which correlates most closely with an initial FL concentration value of 0.15% for parameter values that are characteristic for the fits reported in Table 3. Thus, the average initial FL concentration of our trials is above the ideal value to draw conclusions about TF thickness from measuring and fitting FL intensity.

We explore the effect of varying the initial FL concentration  $f'_0$  on all subsequent computations, including the determination of the optimal parameters. We report the results from examining the S9v2t5 4:00 spot, discussed in Sect. 5.5, and the S10v1t6 12:30 spot, discussed in Sect. 5.3. Ten different  $f'_0$  values normally distributed around the initial FL concentration estimates recorded in Table 3 were used with a standard deviation of  $s = 0.05\%$ . Only results from the runs with residuals less than 10% above

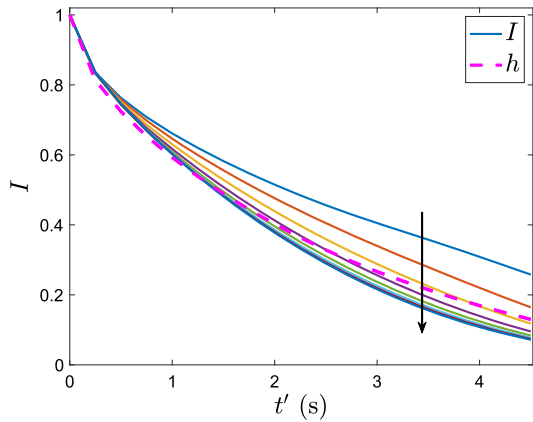


**Fig. 12** (Color figure online) Nondimensional solutions for  $I$  and  $h$  for three different choices of  $f'_0$ : from left to right,  $f'_0 = 0.1\%$ ,  $f'_0 = 0.2\%$ , and  $f'_0 = 0.3\%$ . Arrows indicate increasing time. The parameters are  $v' = 15 \mu\text{m}/\text{min}$ ,  $R'_l = 0.1 \text{ mm}$ ,  $(\Delta\sigma)_0 = 20 \mu\text{N}/\text{m}$ ,  $f'_0 = 0.2\%$ , and  $d = 3 \mu\text{m}$ . The Marangoni number is 2.61

the original value are reported in Tables 8 and 7. For the S9v2t5 4:00 spot, the statistics for the initial FL estimates used are  $0.284 \pm 0.0561\%$ , and for the resulting initial TF thickness estimates,  $2.08 \pm 0.353 \mu\text{m}$ , and for the S10v1t6 12:30 spot, the statistics are  $f'_0: 0.315 \pm 0.0214\%$  and  $h'_0: 3.14 \mu\text{m} \pm 0.285 \mu\text{m}$ .

The parameters are reported in Tables 7 and 8. We denote the mean and standard deviation as  $m$  and  $s$ , respectively. The values were on average 16.0% and 16.9% away from the optimal parameters recorded in Table 3, for the S9v2t5 4:00 and S10v1t6 12:30 spots, respectively. For comparison, the  $f'_0$  values generated were 16.9% and 5.03% away from the mean on average for the S9v2t5 4:00 and S10v1t6 12:30 spots, respectively. For the S9v2t5 4:00 spot, the change in surface tension  $(\Delta\sigma)_0$  showed significantly more variance from the optimal value as compared to both  $R'_l$  and  $v'$ . This may be further evidence that the Marangoni effect is not very important to the thinning in this instance. In contrast, for the S10v1t6 12:30 spot, the thinning rate  $v'$

**Fig. 13** (Color figure online) Minimum FL intensity value (normalized) plotted against time for various  $f_0$ . The arrow indicates increasing initial FL concentration, from 0.05 to 0.4% in increments of 0.05%. Minimum TF thickness (normalized) has been plotted as a dashed line for comparison. The parameters are  $v' = 15 \mu\text{m}/\text{min}$ ,  $R'_I = 0.1 \text{ mm}$ ,  $(\Delta\sigma)_0 = 20 \mu\text{N}/\text{m}$ ,  $f'_0 = 0.2\%$ , and  $d = 3 \mu\text{m}$ . The Marangoni number is 2.61



**Table 7** S9v2t5 4:00 spot: statistics from varying  $f'_0$  on the optimal parameters

Quantity	$m \pm s$	Range	Range in %	Avg. % change from opt
$v'$ ( $\mu\text{m}/\text{min}$ )	$27.5 \pm 3.78$	22.2–33.5	3.38–27.7	12.7
$R'_I$ (mm)	$0.126 \pm 0.00843$	0.118–0.147	0.373–21.2	5.59
$(\Delta\sigma)_0$ ( $\mu\text{N}/\text{m}$ )	$3.60 \pm 1.51$	0.325–5.66	2.88–92.0	29.8

**Table 8** S10v1t6 12:30 spot: statistics from varying  $f'_0$  on the optimal parameters

Quantity	$m \pm s$	Range	Range in %	Avg. % change from opt
$v'$ ( $\mu\text{m}/\text{min}$ )	$5.47 \pm 2.82$	1.92–9.41	17.4–67.5	39.1
$R'_I$ (mm)	$0.0790 \pm 0.00315$	0.0740–0.0828	0.539–6.39	3.09
$(\Delta\sigma)_0$ ( $\mu\text{N}/\text{m}$ )	$62.1 \pm 7.01$	54.9–74.4	2.36–23.3	8.40

showed the most variance from the optimal value, suggesting evaporation is not an important factor in causing the thinning in this case.

## 6 Discussion

We fit PDE models to experimental FL data by optimizing several clinically relevant parameters as model inputs. In comparison with conducting evaporation-only fits, the mixed-mechanism model poses more challenges when fitting to data. We successfully explain several of the varying situations we observe with different evaporation profiles and the inclusion of one or two ghost time levels. There is no unifying theme of the instances we report here, in contrast to the pure-evaporation fits recorded in Luke et al. (2020). There seem to be far fewer instances of intermediate and rapid, hypothesized glob-driven (Cho et al. 1992; Yokoi and Georgiev 2019) thinning than evaporation-driven thinning in the FL data that we studied. Regardless, we are suc-

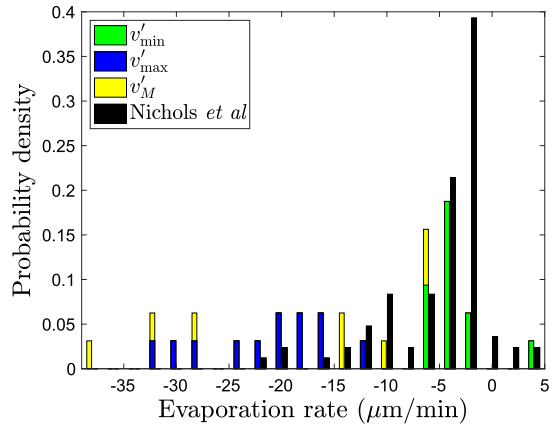
successful in obtaining highly detailed information about the breakup instances we study. Our optimizations are robust as they are insensitive to initial guesses and noise.

Zhong et al. (2019) varied nondimensional glob sizes  $R_I$  between 0.25 and 3 to examine the effect of FT-TBUT (referred to as TBUT in their paper) on  $R_I$ . The length scale used was 0.0742 mm, which is about 4 times smaller than what is found for the fits shown here. The Marangoni-driven instance that the authors used had a trial length of 2.5 s. They noted that capillary pressure driven by increased curvature in the TF shape results in a longer FT-TBUT for a nondimensional  $R_I < 0.025$ . All of our nondimensional optimal glob sizes are above this value, ranging from 0.254 to 0.628. The authors also plotted the location of the minimum thickness versus glob size and showed the existence of a crossover point above which the location of the FT-TBU is outside the glob radius. FT-TBU happens under globs smaller than  $R_I = 0.9$  nondimensionally (0.067 mm dimensionally when  $d = 3.5 \mu\text{m}$ ), and at or outside the edge when the glob is larger. Marangoni effect-driven shear stress extracts fluid from underneath small globs, but cannot affect the TF near the center of a larger glob. While we use a different length scaling than Zhong et al. (2019) did, all of our glob sizes are significantly smaller than the cutoff value of 0.9 nondimensionally. Thus, we expect that breakup is taking place under the globs.

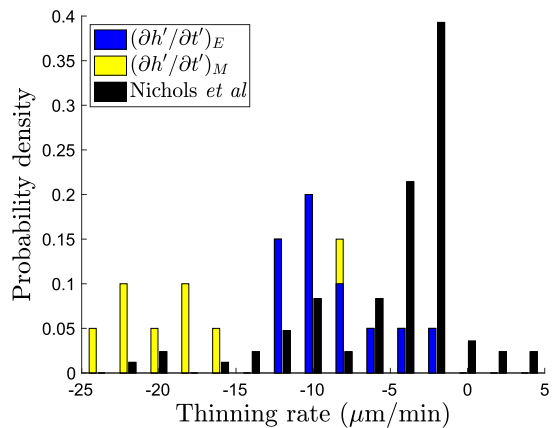
Figure 14a compares data from Nichols et al. (2005) with our optimal evaporation rates from fitting with the evaporation-only model and the mixed-mechanism model. Figure 14b compares the data with our overall thinning rate  $\partial h' / \partial t'$ . Both include evaporation values reported in Luke et al. (2020). Nichols et al. (2005) recorded thinning as a negative rate and thickening as a positive rate; this is the opposite of our reporting style, so we negate our rates in both Fig. 14a, b for comparison. The values recorded in Nichols et al. (2005) compare most closely with our values in Fig. 14b because the authors were unable to separate the effects of evaporation and tangential flow. Further, their point measurements did not target breakup, and as such, the distribution has a smaller mean than our optimizations, since we specifically fit regions of significant FL intensity decrease. Our evaporation-only model thinning rates fall within this experimental range, whereas our mixed-mechanism model results have more variation and some values fall just outside their range. As expected, the evaporation-only thinning rates are smaller on average than the mixed-mechanism cases. The overall thinning rates  $\partial h' / \partial t'$  are smaller than their corresponding evaporation rates  $v'$  for all the evaporation-only cases, as well as the transitional or evaporation-dominated mixed-mechanism cases where the fluid flow is directed inwards for the majority of the trial. This is because the inward flow, characteristic for the evaporation-only model, combats evaporation and retards overall thinning. In contrast, the Marangoni effect-dominated instances have overall thinning rates that are larger than their respective evaporation rates. The strong, outward flow that defines these breakup cases augments evaporation and creates even faster thinning.

In Fig. 15a, b, we compare two breakup instances from the same subject and visit. The left instance (S10v1t2 8:00 streak) is fit by the evaporation-driven thinning model (see Table 5); the right instance is fit with our mixed-mechanism model (S10v1t6 12:30 spot, see Table 3). The qualitative and quantitative differences in intensity decrease over time from Fig. 15a to Fig. 15b suggest the possibility of different mechanisms driving FT-TBU. We report the percent FL intensity decrease per second for all breakup

**Fig. 14** (Color figure online) Histograms of rates of change plotted against experimental point measurements from Nichols et al. (2005). The background and peak evaporation rates  $v'_{\min}$  and  $v'_{\max}$ , respectively, are for the evaporation-only model fits shown in Luke et al. (2020), and the single evaporation rate  $v'_M$  is for the mixed-mechanism model fits reported in Tables 3 and 4



(a) Evaporation rates

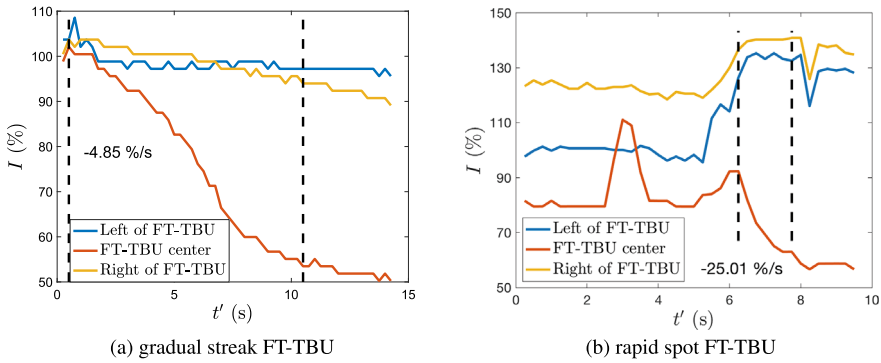


(b) Overall thinning rates

instances studied (not necessarily reported in this paper or Luke et al. (2020)). This is shown in Fig. 16. The data points are categorized by which model produced a successful fit: mixed-mechanism, evaporation-only, or neither. Neither also includes instances for which an evaporation-only fit was not attempted. Faster instances are fit well with the mixed-mechanism model, and slower instances are fit well with the evaporation-only model. We were unable to fit some instances with either model. The approximate delineation by percent FL intensity rate of decrease in which mechanisms are important is further evidence that the time scale on which breakup forms is important (Awisi-Gyau et al. 2021).

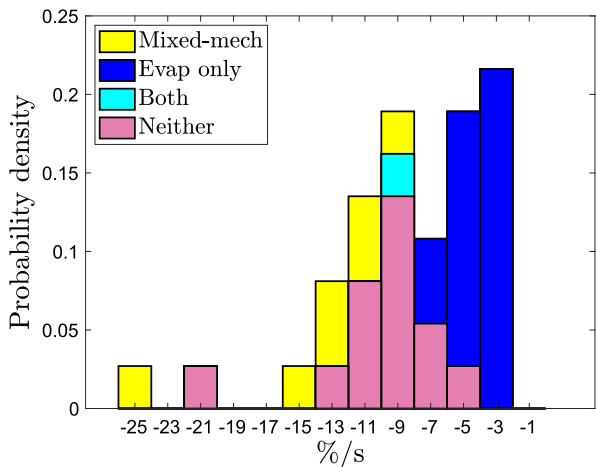
Figure 17 displays various quantities for TF thickness and osmolarity and compares the results from this report with those given in Luke et al. (2020). The maximum osmolarity and minimum thickness of the theoretical solution of each fit are shown in the histogram in Fig. 17a, b. Referring to Table 3, there is a direct, apparently





**Fig. 15** (Color figure online) Comparison of FL intensity change over time of FT-TBU from the same subject and visit in different trials, shown with average percentage decrease per second for various time regions during the trial

**Fig. 16** (Color figure online) Histogram of percent FL intensity change per second categorized by best model fit



linear relationship between the optimal rate of evaporation and the maximum osmolarity. Further, the mixed-mechanism fits display lower maximum osmolarity values on average than the evaporation-only fits. This is largely due to the opposing flow directions of the models. Solute are advected into the breakup region for the duration of the trial in evaporative cases, increasing osmolarity in that region. In contrast, outward-directed flow carries salt and fluorescein ions away from the dry spot in mixed-mechanism instances, lowering the central concentration. Minimum thickness values are on average lower for the mixed-mechanism cases.

The maximum osmolarity for each fit in Table 3 and the values from Luke et al. (2020) are plotted against the time interval of the fit in Fig. 17c. The result gives evidence that osmolarity has a large range in as short a time frame as 10s. In the evaporation-only cases, osmolarity tends to level off around a similar value regardless of trial length. This supports the notion that the TF thickness has reached the height of the glycocalyx at the end of the fit interval. Therefore, the salt concentration cannot

increase beyond this point as its movement is tied to the fluid dynamics, which have essentially halted. The time resolution of the data inhibits our ability to resolve the rapid dynamics that occur in the shorter trials; this needs to be taken into consideration when drawing conclusions about our results.

The ratio of maximum to minimum theoretical TF thickness has been plotted against the ratio of maximum to minimum theoretical osmolarity in Fig. 17d. Mass conservation in the flat film approximation without flow given in Braun et al. (2014) satisfies

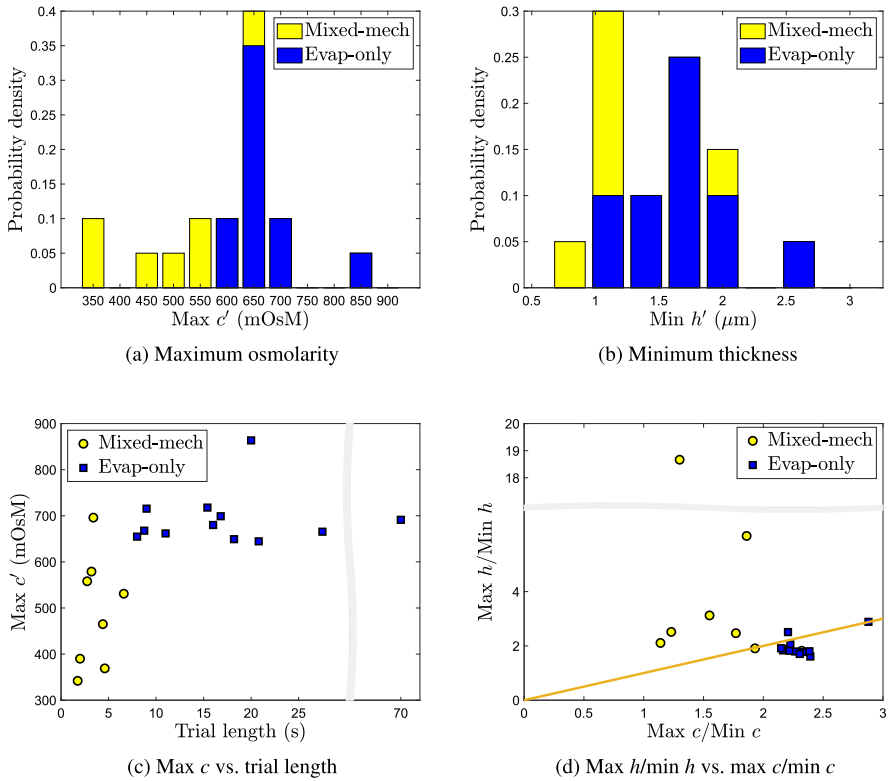
$$hc = \text{constant}, \quad (25)$$

and therefore gives a straight line for relative change. Most mixed-mechanism fits recorded in Table 3 fall above this line. The rapid, outward flow that characterizes the mixed-mechanism fits aids thinning and thus the thickness ratio is higher than osmolarity in most cases. The mixed-mechanism outlier above the axis break is evidence that evaporation, which increases osmolarity, did not have time to act within this trial. Most evaporation-only fits from Luke et al. (2020) fall just below the straight line from the flat-film approximation. The osmolarity ratio is larger than that of thickness in most evaporation-only cases because inward flow sweeps salt into the breakup region. The inclusion of spatial variation in our PDE models allows salt ions to leave the breakup region by diffusion, whereas the osmolarity in the ODE flat-film model can become large enough to stop thinning by inducing vertical flow from the cornea. Osmosis never overcomes thinning in the PDE model, as seen previously (Peng et al. 2014a; Braun et al. 2015).

All of our indicators point to breakup that is not terribly severe for normal subject individuals that we fit. This is evidenced by minimum thickness estimates that rarely approach zero and maximum osmolarity values below those estimated experimentally or modeled elsewhere (Liu et al. 2009; Braun et al. 2015; Peng et al. 2014a; Li et al. 2016). This may be a limitation of our data, both in its imaging modality and time resolution, or it may indicate that our model needs to include other mechanisms not yet considered. Braun et al. (2018) showed that tear film models with spatial variation produce smaller peak osmolarity values than the theoretical limit of the flat film result. King-Smith et al. (2018) found evidence that evaporation continues after FT-TBUT, causing the appearance of “hollows” in the corneal surface (see their Fig. 1b). We miss these dynamics since we halt our fitting procedure at FT-TBUT; incorporating this into our model could yield simulations that more closely match severe breakup. In a few of the instances recorded in Tables 3 and 4, it is possible to fit slightly longer in time; as a result, we are fairly confident that we underestimate the maximum osmolarity and overestimate the minimum TF thickness.

## 7 Conclusions and Future Work

The mixed-mechanism model gives the best fit to the intermediate thinning instances we study, as compared to evaporation-only or zero evaporation models as measured by smaller residuals and realistic parameter values. We take this as strong evidence that both evaporation and the Marangoni effect affect the formation of some cases of FT-TBU that occur in 1–8 s. While the relative importance of each mechanism



**Fig. 17** (Color figure online) **a, b** Histograms of maximum osmolarity and minimum thickness (final times of fit). **c** Maximum osmolarity versus trial fitting time. Mixed-mech denotes the mixed-mechanism model fits and evap-only denotes the evaporation model fits in Luke et al. (2020). **d** Relative change in theoretical TF thickness and osmolarity. A line of slope one has been added to show the flat film approximation. Note that in (c) and (d) axes breaks have been used. Maximum thickness and minimum osmolarity are initial conditions

may vary between instances, leaving out one or the other significantly decreases the quality of the fit and/or the feasibility of the optimal parameters. The Marangoni effect dominates the dynamics early on in the trial as evidenced by the significant outward flow that characterizes each instance we report, and evaporation plays a supporting role that becomes increasingly important as time increases and the Marangoni effect diminishes in magnitude. Capillary flow may overtake the initial outward tangential flow and inward flow may attempt to fill the forming spot or streak.

Our results are differentiated by the optimal parameter values; we categorize various ranges by which mechanism, if any, dominates the thinning seen in the trial. We obtain estimates from our optimizations for parameters that cannot currently be measured directly in vivo. Some optimal parameter values fall within published ranges of experimental point measurements (Nichols et al. 2005), while others lie above them. This discrepancy is likely due to our ability to target breakup, as the experimental data were taken from the center of the cornea regardless of whether breakup occurs.

Improvements could be made to this model. The glycocalyx could be modeled as a porous medium instead of using a no slip condition at the ocular surface; this could promote breakup at shorter times for smaller spots (Nong and Anderson 2010). A two-layer model for the TF system could also be used (see Bruna and Breward 2014; Stapf et al. 2017), and the fit could be conducted over two spatial dimensions.

A local ODE model that approximates the fluid flow dynamics near the center of FT-TBU has been created; fitting, analysis, and comparison to the PDE results are underway. We aim to use this simplified version of the model to elucidate mechanistic information from the data and automate the process of identifying a wider range of breakup regions and fitting them with a model in order to estimate relevant TF quantities in FT-TBU. This approach would give a representative statistical view of the dataset, rather than the complex and detailed information from a handful of instances of specific shapes.

**Supplementary Information** The online version contains supplementary material available at <https://doi.org/10.1007/s11538-021-00871-x>.

**Funding** This work was supported by National Science Foundation Grant DMS 1909846 and National Institutes of Health Grant NEI R01EY021794. The content is solely the responsibility of the authors and does not necessarily represent the official views of the funding sources.

## Compliance with Ethical Standards

**Conflict of interest** The authors declare that they have no conflict of interest.

## References

- Ajaev VS, Homsy GM (2001) Steady vapor bubbles in rectangular microchannels. *J Coll Interface Sci* 240(1):259–271
- Argüeso P, Gipson IK (2001) Epithelial mucins of the ocular surface: structure, biosynthesis and function. *Exp Eye Res* 73(3):281–289
- Arnold S, Walter A, Eppig T, Bruenner H, Langenbucher A (2010) Simultaneous examination of tear film break-up and the lipid layer of the human eye: a novel sensor design (part 1). *Z Med Phys* 20(4):309–315
- Awisi-Gyau D (2020) Characterization of tear breakup and its sensory effects. PhD Thesis, Indiana University
- Awisi-Gyau D, Begley CG, Braun RJ, Luke RA, Tichenor A, King-Smith P (2020) Characterization of spatial and temporal properties of tear breakup patterns (in preparation)
- Aydemir E, Breward CJW, Witelski TP (2010) The effect of polar lipids on tear film dynamics. *Bull Math Biol* 73:1171–1201
- Begley CG, Simpson T, Liu H, Salvo E, Wu Z, Bradley A, Situ P (2013) Quantative analysis of tear film fluorescence and discomfort during tear film instability and thinning. *Invest Ophthalmol Vis Sci* 54:2645–2653
- Benedetto DA, Clinch TE, Laibson PR (1986) In vivo observations of tear dynamics using fluorophotometry. *Arch Ophthalmol* 102:410–412
- Borchman D, Ramasubramanian A, Foulks GN (2019) Human meibum cholesteryl and wax ester variability with age, sex, and meibomian gland dysfunction. *Invest Ophthalmol Vis Sci* 60(6):2286–2293
- Braun RJ (2012) Dynamics of the tear film. *Annu Rev Fluid Mech* 44:267–297
- Braun RJ, Gewecke NR, Begley CG, King-Smith PE, Siddique JI (2014) A model for tear film thinning with osmolarity and fluorescein. *Invest Ophthalmol Vis Sci* 55(2):1133–1142

- Braun RJ, King-Smith PE, Begley CG, Li L, Gewecke NR (2015) Dynamics and function of the tear film in relation to the blink cycle. *Prog Retin Eye Res* 45:132–164
- Braun RJ, Driscoll TA, Begley CG, King-Smith PE, Siddique JI (2018) On tear film breakup (TBU): dynamics and imaging. *Math Med Biol* 35(2):145–180
- Bron A, Argüeso P, Ircek M, Bright F (2015) Clinical staining of the ocular surface: mechanisms and interpretations. *Prog Ret Eye Res* 44:36–61
- Bruna M, Breward CJW (2014) The influence of nonpolar lipids on tear film dynamics. *J Fluid Mech* 746:565–605
- Butovich IA (2013) Tear film lipids. *Exp Eye Res* 117:4–27
- Canuto C, Hussaini MY, Quarteroni A, Thomas A Jr et al (2012) *Spectral methods in fluid dynamics*. Springer, Berlin
- Carlson NB, Kurtz D, Hines C (2004) *Clinical procedures for ocular examination*, vol 3. McGraw-Hill, New York
- Casalini T, Salvalaglio M, Perale G, Masi M, Cavallotti C (2011) Diffusion and aggregation of sodium fluorescein in aqueous solutions. *J Phys Chem B* 115(44):12896–12904
- Cerretani CF, Radke C (2014) Tear dynamics in healthy and dry eyes. *Curr Eye Res* 39(6):580–595
- Cho P, Brown B, Chan I, Conway R, Yap M (1992) Reliability of the tear break-up time technique of assessing tear stability and the locations of the tear break-up in Hong Kong Chinese. *Optom Vis Sci* 69(11):879–885
- Craig JP, Nichols KK, Nichols JJ, Caffery B, Dua HS, Akpek EK, Tsubota K, Joo CK, Liu Z, Nelson JD, Stapleton F (2017) The TFOS DEWS II Definition and classification Report. *Ocul Surf* 15:276–283
- Craster RV, Matar OK (2009) Dynamics and stability of thin liquid films. *Rev Mod Phys* 81(3):1131
- Dartt D (2009) Neural regulation of lacrimal gland secretory processes: relevance in dry eye diseases. *Prog Retin Eye Res* 28:155–177
- Dartt D, Willcox M (2013) Complexity of the tear film: importance in homeostasis and dysfunction during disease. *Exp Eye Res* 117:1–3
- Doane MG (1981) Blinking and the mechanics of the lacrimal drainage system. *Ophthalmology* 88:844–51
- Dursch TJ, Li W, Taraz B, Lin MC, Radke CJ (2018) Tear-film evaporation rate from simultaneous ocular-surface temperature and tear-breakup area. *Optom Vis Sci* 95(1):5–12
- Georgiev GA, Eftimov P, Yokoi N (2017) Structure-function relationship of tear film lipid layer: A contemporary perspective. *Exp Eye Res* 163:17–28
- Gilbard JP, Farris RL, Santamaria J (1978) Osmolarity of tear microvolumes in keratoconjunctivitis sicca. *Arch Ophthalmol* 96(4):677–681
- Gipson IK (2004) Distribution of mucins at the ocular surface. *Exp Eye Res* 78(3):379–388
- Hamano H, Hori M, Mitsunaga S (1981) Measurement of evaporation rate of water from the precorneal tear film and contact lenses. *Contacto* 25(2):7–15
- Himebaugh N, Nam J, Bradley A, Liu H, Thibos LN, Begley CG (2012) Scale and spatial distribution of aberrations associated with tear breakup. *Optom Vis Sci* 89(11):1590–1600
- Huang J, Hindman HB, Rolland JP (2016) In vivo thickness dynamics measurement of tear film lipid and aqueous layers with optical coherence tomography and maximum-likelihood estimation. *Opt Lett* 41(9):1981–1984
- Jensen OE, Grotberg JB (1993) The spreading of heat or soluble surfactant along a thin liquid film. *Phys Fluids A* 75:58–68
- Johnson ME, Murphy PJ (2004) Changes in the tear film and ocular surface from dry eye syndrome. *Prog Ret Eye Res* 23(4):449–474
- Kimball SH, King-Smith PE, Nichols JJ (2010) Evidence for the major contribution of evaporation to tear film thinning between blinks. *Invest Ophthalmol Vis Sci* 51(12):6294–6297
- King-Smith PE, Fink B, Hill R, Koelling K, Tiffany J (2004) The thickness of the tear film. *Curr Eye Res* 29(4–5):357–368
- King-Smith PE, Fink BA, Nichols JJ, Nichols KK, Braun RJ, McFadden GB (2009) The contribution of lipid layer movement to tear film thinning and breakup. *Invest Ophthalmol Vis Sci* 50(6):2747–2756
- King-Smith PE, Hinel EA, Nichols JJ (2010) Application of a novel interferometric method to investigate the relation between lipid layer thickness and tear film thinning. *Invest Ophthalmol Vis Sci* 51(5):2418–2423
- King-Smith PE, Nichols JJ, Braun RJ, Nichols KK (2011) High resolution microscopy of the lipid layer of the tear film. *Ocul Surf* 9(4):197–211

- King-Smith PE, Ramamoorthy P, Braun RJ, Nichols JJ (2013a) Tear film images and breakup analyzed using fluorescent quenching. *Invest Ophthalmol Vis Sci* 54:6003–6011
- King-Smith PE, Reuter KS, Braun RJ, Nichols JJ, Nichols KK (2013b) Tear film breakup and structure studied by simultaneous video recording of fluorescence and tear film lipid layer images. *Invest Ophthalmol Vis Sci* 54(7):4900–4909
- King-Smith PE, Begley CG, Braun RJ (2018) Mechanisms, imaging and structure of tear film breakup. *Ocul Surf* 16:4–30
- Lemp MA, Bron AJ, Baudouin C, del Castillo JMB, Geffen D, Tauber J, Foulks GN, Pepose JS, Sullivan BD (2011) Tear osmolarity in the diagnosis and management of dry eye disease. *Am J Ophthalmol* 151(5):792–798
- Lemp MA et al (2007) The definition and classification of dry eye disease: Report of the Definition and Classification Subcommittee of the International Dry Eye WorkShop. *Ocul Surf* 5:75–92
- LeVeque RJ (2007) Finite difference methods for ordinary and partial differential equations: steady-state and time-dependent problems. SIAM, Philadelphia
- Li L, Braun R, Maki K, Henshaw W, King-Smith PE (2014) Tear film dynamics with evaporation, wetting, and time-dependent flux boundary condition on an eye-shaped domain. *Phys Fluids* 26(5):052101
- Li L, Braun RJ, Driscoll TA, Henshaw WD, Banks JW, King-Smith PE (2016) Computed tear film and osmolarity dynamics on an eye-shaped domain. *Math Med Biol* 33(2):123–157
- Liu H, Begley CG, Chalmers R, Wilson G, Srinivas SP, Wilkinson JA (2006) Temporal progression and spatial repeatability of tear breakup. *Optom Vis Sci* 83:723–730
- Liu H, Begley C, Chen M, Bradley A, Bonanno J, McNamara NA, Nelson JD, Simpson T (2009) A link between tear instability and hyperosmolarity in dry eye. *Invest Ophthalmol Vis Sci* 50:3671–79
- Lu H, Wang MR, Wang J, Shen M (2014) Tear film measurement by optical reflectometry technique. *J Biomed Opt* 19(2):027001
- Luke R, Braun R, Driscoll T, Begley C, Awisi-Gyau D (2020) Parameter estimation for evaporation-driven tear film thinning. *Bull Math Biol* 82(6):1–41. <https://doi.org/10.1007/s11538-020-00745-8>
- McCulley JP, Shine W (1997) A compositional based model for the tear film lipid layer. *Trans Am Ophthalmol Soc* 95:79–93
- Mertzanis P, Abetz L, Rajagopalan K, Espindle D, Chalmers R, Snyder C, Caffery B, Edrington T, Simpson T, Nelson JD et al (2005) The relative burden of dry eye in patients' lives: comparisons to a US normative sample. *Invest Ophthalmol Vis Sci* 46(1):46–50
- Miljanović B, Dana R, Sullivan DA, Schaumberg DA (2007) Impact of dry eye syndrome on vision-related quality of life. *Am J Ophthalmol* 143(3):409–415
- Mishima S, Maurice D (1961) The oily layer of the tear film and evaporation. *Exp Eye Res* 1:39–45
- Mota M, Carvalho P, Ramalho J, Leite E (1991) Spectrophotometric analysis of sodium fluorescein aqueous solutions, determination of molar absorption coefficient. *Int Ophthalmol* 15(5):321–326
- Nagyová B, Tiffany J (1999) Components responsible for the surface tension of human tears. *Curr Eye Res* 19(1):4–11
- Nelson JD, Craig JP, Akpek EK, Azar DT, Belmonte C, Bron AJ, Clayton JA, Dogru M, Dua HS, Foulks GN et al (2017) TFOS DEWS II Introduction. *Ocul Surf* 15(3):269–275
- Nichols JJ, Mitchell GL, King-Smith PE (2005) Thinning rate of the precorneal and prelens tear films. *Invest Ophthalmol Vis Sci* 46(7):2353–2361
- Nichols JJ, King-Smith PE, Hinel EA, Thangavelu M, Nichols KK (2012) The use of fluorescent quenching in studying the contribution of evaporation to tear thinning. *Invest Ophthalmol Vis Sci* 53(9):5426–5432
- Nocedal J, Wright S (2006) Numerical optimization. Springer, Berlin
- Nong K, Anderson DM (2010) Thin film evolution over a thin porous layer: modeling a tear film over a contact lens. *SIAM J Appl Math* 70:2771–2795
- Norn M (1969) Desiccation of the precorneal film: I. Corneal wetting-time. *Acta Ophthalmol* 47(4):865–880
- Norn MS (1970) Micropunctate fluorescein vital staining of the cornea. *Acta Ophthalmol* 48:108–118
- Oron A, Davis SH, Bankoff SG (1997) Long-scale evolution of thin liquid films. *Rev Mod Phys* 69(3):931
- Paananen RO, Javanainen M, Holopainen JM, Vattulainen I (2019) Crystalline wax esters regulate the evaporation resistance of tear film lipid layers associated with dry eye syndrome. *J Phys Chem Lett* 10(14):3893–3898
- Paananen RO, Viitaja T, Olżyńska A, Ekholm FS, Moilanen J, Cwiklik L (2020) Interactions of polar lipids with cholesteryl ester multilayers elucidate tear film lipid layer structure. *Ocul Surf* 18(4):545–553

- Peng CC, Cerretani C, Braun RJ, Radke CJ (2014a) Evaporation-driven instability of the precorneal tear film. *Adv Coll Interface Sci* 206:250–264
- Peng CC, Cerretani C, Li Y, Bowers S, Shahsavarani S, Lin M, Radke C (2014b) Flow evaporimeter to assess evaporative resistance of human tear-film lipid layer. *Ind Eng Chem Res* 53(47):18130–18139
- Riquelme R, Lira I, Pérez-López C, Rayas JA, Rodríguez-Vera R (2007) Interferometric measurement of a diffusion coefficient: comparison of two methods and uncertainty analysis. *J Phys D Appl Phys* 40(9):2769
- Stahl U, Willcox M, Stapleton F (2012) Osmolality and tear film dynamics. *Clin Exp Optom* 95(1):3–11
- Stapf MR, Braun RJ, King-Smith PE (2017) Duplex tear film evaporation analysis. *Bull Math Biol* 79(12):2814–2846
- Sullivan BD, Whitmer D, Nichols KK, Tomlinson A, Foulks GN, Geerling G, Pepose JS, Kosheleff V, Porreco A, Lemp MA (2010) An objective approach to dry eye disease severity. *Invest Ophthalmol Vis Sci* 51(12):6125–6130
- Tietz NW (1995) *Clinical guide to laboratory tests*. W.B. Saunders, Waltham
- Tiffany JM (1990a) Measurement of wettability of the corneal epithelium: I. Particle attachment method. *Acta Ophthalmol* 68(2):175–181
- Tiffany JM (1990b) Measurement of wettability of the corneal epithelium: II. Contact angle method. *Acta Ophthalmol* 68(2):182–187
- Tiffany JM (1991) The viscosity of human tears. *Int Ophthalmol* 15(6):371–376
- Tomlinson A, Khanal S, Ramaesh K, Diaper C, McFadyen A (2006) Tear film osmolarity: determination of a referent for dry eye diagnosis. *Invest Ophthalmol Vis Sci* 47(10):4309–4315
- Tomlinson A, Doane M, McFadyen A (2009) Inputs and outputs of the lacrimal system: Review of production and evaporative loss. *Ocul Surf* 7(4):186–198
- Trefethen LN (2000) *Spectral methods in MATLAB*. SIAM, Philadelphia
- Versura P, Profazio V, Campos E (2010) Performance of tear osmolarity compared to previous diagnostic tests for dry eye diseases. *Curr Eye Res* 35(7):553–564
- Wang J, Fonn D, Simpson TL, Jones L (2003) Precorneal and pre- and postlens tear film thickness measured indirectly with optical coherence tomography. *Invest Ophthalmol Vis Sci* 44(6):2524–2528
- Webber WRS, Jones DP (1986) Continuous fluorophotometric method measuring tear turnover rate in humans and analysis of factors affecting accuracy. *Med Biol Eng Comput* 24:386–392
- Willcox MDP, Argüeso P, Georgiev GA, Holopainen JM, Laurie GW, Millar TJ, Papas EB, Rolland JP, Schmidt TA, Stahl U, Suarez T, Subbaraman LN, Ucakhan OO, Jones LW (2017) The TFOS DEWS II Tear Film Report. *Ocul Surf* 15:369–406
- Wong S, Murphy PJ, Jones L (2018) Tear evaporation rates: what does the literature tell us? *Cont Lens Anterior Eye* 41(3):297–306
- Wu Z, Begley CG, Port N, Bradley A, Braun R, King-Smith E (2015) The effects of increasing ocular surface stimulation on blinking and tear secretion. *Invest Ophthalmol Vis Sci* 56(8):4211–4220
- Yokoi N, Georgiev GA (2013) Tear-film-oriented diagnosis and therapy for dry eye. In: Yokoi N (ed) *Dry eye syndrome: basic and clinical perspectives*. Future Medicine, London, pp 96–108
- Yokoi N, Georgiev GA (2019) Tear-film-oriented diagnosis for dry eye. *Jpn J Ophthalmol* 63:127–136
- Zhong L, Ketelaar CF, Braun RJ, Begley CG, King-Smith PE (2018) Mathematical modelling of glob-driven tear film breakup. *Math Med Biol* 36(1):55–91
- Zhong L, Braun RJ, Begley CG, King-Smith PE (2019) Dynamics of fluorescent imaging for rapid tear thinning. *Bull Math Biol* 81(1):39–80