



# The Activity of Crizotinib in Chemo-Refractory *MET*-Amplified Esophageal and Gastric Adenocarcinomas: Results from the AcSé-Crizotinib Program

Thomas Aparicio<sup>1</sup> · Nathalie Cozic<sup>2,3</sup> · Christelle de la Fouchardière<sup>4,20</sup> · Emeline Meriaux<sup>5</sup> · Jérôme Plaza<sup>6</sup> · Laurent Mineur<sup>7</sup> · Rosine Guimbaud<sup>8</sup> · Emmanuelle Samalin<sup>9</sup> · Florence Mary<sup>10</sup> · Thierry Lecomte<sup>11</sup> · Carlos Gomez-Roca<sup>12,15</sup> · Paul-Arthur Haineaux<sup>13</sup> · Alain Gratet<sup>14</sup> · Jannick Selves<sup>15</sup> · Yves Menu<sup>16</sup> · Nikias Colignon<sup>16</sup> · Laetitia Johnson<sup>17</sup> · Frédéric Legrand<sup>18</sup> · Gilles Vassal<sup>19</sup>

Accepted: 20 March 2021 / Published online: 13 April 2021  
© The Author(s) 2021

## Abstract

**Background** The AcSé-crizotinib program provides extensive screening of crizotinib-targeted genomic alteration in several malignancies. We here report the results in patients with esogastric *MET*-amplified adenocarcinomas.

**Objective** The objective of the study was to evaluate the efficacy and tolerability of crizotinib in patients with pretreated esogastric *MET*-amplified adenocarcinoma who have no alternative treatment options.

**Patients and Methods** *MET* expression was evaluated by fluorescence in situ hybridization in tumor samples with immunohistochemistry scores  $\geq 2+$ . Patients with chemo-refractory tumors showing  $\geq 6$  *MET* copies were eligible for crizotinib 250 mg twice daily. The primary efficacy outcome was the objective response rate after two cycles of crizotinib.

**Results** *MET* was prospectively analyzed in 570 esogastric adenocarcinomas. Amplifications were found in 35/570 adenocarcinomas (29/523 gastric and 6/47 esophageal). Nine patients were treated with crizotinib. The objective response rate after two cycles was 33.3% (95% CI 7.5–70), the best overall response rate was 55.6% (95% CI 21.2–86.3), with median progression-free survival of 3.2 months (95% CI 1.0–5.4), and overall survival of 8.1 months (95% CI 1.7–24.6). Safety was consistent with that previously reported for crizotinib.

**Conclusions** Large-scale screening for *MET*-amplified esogastric adenocarcinomas is feasible. *MET* amplification was observed in 5.5% of gastric and 12.8% of esophageal adenocarcinomas. Crizotinib shows encouraging results in selected patients. Thus, c-MET inhibition for *MET*-amplified tumors deserves further evaluation.

**Trial Registration Number** NCT02034981.

**Date of Registration** 14 January 2014.

## Key Points

*MET*-amplification,  $\geq 6$  copies, was detected in 6.1% of advanced esogastric adenocarcinomas.

The best overall response rate observed in the nine patients with *MET*-amplified tumors treated with crizotinib was 55.6%.

No new safety concerns were reported related to crizotinib in patients with esogastric adenocarcinoma.

## 1 Introduction

Molecular tumor profiling is increasingly being used to identify targetable alterations and to tailor treatment options. The drug registration process is slow and lengthy. Consequently, off-label use of new drugs is a growing concern. The AcSé program was initiated by the French National Cancer Institute (INCa) in 2013. Our objective was to give patients access to approved targeted therapies, even though the therapy had not been approved in a specific tumor indication [1]. However, the tumor needed to harbor the targeted molecular alteration. The program aimed to evaluate the efficacy and safety of targeted therapies in patients who had no alternative approved treatment options. Crizotinib is a selective small-molecule oral inhibitor of the anaplastic

✉ Thomas Aparicio  
thomas.aparicio@aphp.fr

Extended author information available on the last page of the article

lymphoma kinase (ALK), c-MET/hepatocyte growth factor receptor (HGFR), and ROS receptor tyrosine kinases. *MET* amplification was reported in 5–6% of esogastric adenocarcinomas and is an oncogenic driver and therapeutic target [2]. Targeting c-MET receptor with monoclonal antibodies has been disappointing [3–5]. Nevertheless, a previous study reported tumor shrinkage in two patients with *MET*-amplified esogastric adenocarcinoma treated with crizotinib [6].

When the AcSé program started, crizotinib was approved as monotherapy for treating non-small-cell lung cancers with *ALK* gene rearrangement. We hypothesized that crizotinib could be active in esogastric adenocarcinoma with *MET* amplification. The AcSé crizotinib program comprised two parts: a biomarker testing study to identify patients with a malignancy showing genomic molecular alterations targeted by crizotinib (ALK, c-MET, or ROS-1) and a phase II clinical trial (with several disease cohorts) providing adults, adolescents, and children with biomarker-positive cancers and for whom all available and validated therapies have failed, access to crizotinib monotherapy. In this paper, we present the results of the esogastric cohort that enrolled adult patients with tumors having  $\geq 6$  copies of *MET*.

## 2 Patients and Methods

### 2.1 Patients and Molecular Testing

The trial screened patients with inoperable, histologically confirmed locally advanced or metastatic esogastric adenocarcinomas, without an available approved treatment option. Patients needed a measurable lesion by computed tomography (CT)-scan (using response criteria in solid tumors [RECIST] v1.1) and an Eastern Cooperative Oncology Group (ECOG) performance status  $\leq 2$ . The trial protocol is available in the Online Supplementary Material. The study was approved by the Ethics Committee (CPP IDF VII, Hôpital de Bicêtre n°13-016 in May 13, 2013) and registered in EudraCT with the number 2013-000885-13. The study was performed in accordance with the ethical standards as laid down in the 1964 Declaration of Helsinki. A consent was obtained from all patients to participate in the study after detailed information.

Patients were included in the esogastric cohort if their tumors were *MET* amplified (*MET*  $\geq 6$  copies). A tissue sample of the primary or metastatic lesion was analyzed in one of the 28 certified regional genetics centers in the French network. Patients were initially screened by immunohistochemistry (IHC) to assess c-MET expression. For patients with diffuse or focal c-MET expression of 2+ or 3+ by IHC, *MET* amplification was assessed by fluorescence in situ hybridization (FISH). The numbers of *MET* gene copies

were read in  $\geq 100$  nuclei. The *MET* amplification threshold for study enrollment was set at  $\geq 6$  copies. The numbers of *MET* gene copies were also classified by the *MET* copies per centromere ratio: high polysomy ( $< 1.8$  *MET*/centromere), low ( $\geq 1.8$  to  $\leq 2.2$ ), intermediate ( $> 2.2$  to  $< 5.0$ ), and high amplifications ( $\geq 5.0$ ).

### 2.2 Treatment

Patients were treated with oral crizotinib, 250 mg twice daily, until disease progression, patient decision, or for any reason in the interest of the patient. Treatment was divided into 28-day cycles for reporting purposes.

### 2.3 Study Objectives and Outcomes

The primary objective was to assess the efficacy of crizotinib, using the confirmed objective response rate (ORR) after two cycles of crizotinib. An objective response was defined as a complete response (CR) or partial response (PR) by RECIST v1.1. Tumor response was assessed by CT scan and/or magnetic resonance imaging (MRI) at baseline, then every 8 weeks. In addition, a confirmation CT scan and/or MRI were required when disease progressions were suspected or to confirm a PR or CR (minimum delay of 4 weeks). An independent central review was performed for each patient with PR or CR. Patients with clinical progression, without RECIST assessment, were considered as having progressive disease.

The secondary objectives were best overall response rate (BOR), disease control rate at two cycles, progression-free survival (PFS), and overall survival (OS). Disease control rate was defined as the percentage of patients with a CR, PR, or SD according to RECIST and was assessed after cycle 2 and 4. Best response over the whole treatment duration was described using all RECIST evaluations. Best response, according to RECIST, was centrally reviewed for patients with CR and PR. If a patient had no centrally reviewed response, the best response was based on the RECIST evaluation performed by the investigator at the center. PFS was defined as the time interval between the date of first intake of crizotinib and the date of the first documented sign of disease progression or date of death, whichever occurred first. OS was defined as the time interval between the date of first intake of crizotinib and date of death, whatever the cause. Response duration was defined as the time interval between the date of the first recorded CR or PR and the date of documented disease recurrence or progression, or death, whichever occurred first.

Crizotinib tolerance was also assessed, graded by the common terminology criteria for adverse events (CTCAE) v4.0. Adverse events were recorded as worst grade for each category, patient, and cycle. The investigator assessed

whether the reported events were related or not to crizotinib. We only report adverse events considered at least possibly related to crizotinib. For adverse events considered related to crizotinib, the maximum grade observed during treatment by patient and type of toxicities were also recorded.

## 2.4 Study Design and Statistical Methods

The AcSé crizotinib cohorts were based on a two-stage Simon design. In the esogastric cohort, crizotinib was deemed worthy of further evaluation if the objective confirmed response rate at two cycles was  $\geq 30\%$  (P1) and ineffective if the response rate was  $\leq 10\%$  (P0) ( $\alpha = 10\%$ ,  $\beta = 10\%$ ). During the first stage, if no tumor response was observed in the first 11 patients, accrual would be stopped. Otherwise, further patients would be enrolled in the second stage. In the final analysis of 25 evaluable patients, crizotinib would be considered as not sufficiently efficient if  $\leq 4$  responses were observed or as deserving further development if  $\geq 5$  responses were observed. PFS, OS, and duration of response were analyzed using the Kaplan-Meier method.

Patients who received at least one dose of crizotinib were included in the efficacy and safety analyses. The analyses were performed using SAS 9.3 software (SAS Institute, Cary, NC, USA).

## 3 Results

From 08/2013 to 03/2018, c-MET was prospectively analyzed in 570 esogastric adenocarcinoma. *MET* amplification was found in 35 tumors (6.1%). *MET* was amplified in 29/523 patients (5.5%) with gastric adenocarcinomas and 6/47 (12.8%) with esophageal adenocarcinomas. Among the 35 patients with *MET* amplified tumors, 11 patients (31%) were enrolled in the AcSé crizotinib esogastric cohort. Two patients died before starting treatment and were excluded from the analysis (Fig. 1). Due to slow accrual, recruitment was stopped before reaching the 11 evaluable patients needed for the first stage. In the nine patients treated, the median copy number of *MET* was 7 (range 6–11), the median *MET* rate of positive nuclei was 50% (range: 2–80%) and the median rate of positive cells was 90% (range 50–100%). Three patients (33%) had a low ratio of *MET* copies per centromere and six patients (66%) had an intermediate ratio of *MET* copies per centromere. We observed a tumor objective response in 2/3 patients (67%) with a low tumor *MET*-amplification and in 3/6 (50%) with an intermediate tumor *MET*-amplification.

The characteristics of the nine treated patients are presented in Table 1. The median follow-up was 8.1 months. At the cut-off date for analysis, no patient was still receiving crizotinib. Crizotinib discontinuation was due to disease

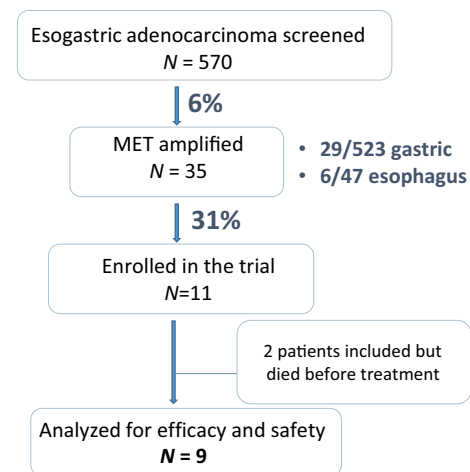


Fig. 1 Consort diagram

progression, either radiological or clinical, in seven patients (77.8%) or due to adverse events in two patients (22.2%): increased alanine aminotransferase (ALT) and bilirubin in one patient, and pneumopathy in the other patient. The median number of cycles was five (range 2–12). The median treatment duration was 115 days (range 30–312).

The ORR after two cycles was 33.3% (95% CI 7.5–70). The BOR was 55.6% (95% CI 21.2–86.3) (Fig. 2a). One patient had a discordant tumor response with an objective response of the target lesion but with a new lesion. The disease control rate at two cycles was 55.6% (95% CI 21.2–86.3) and at four cycles was 44.4% (95% CI 13.7–78.8). The median duration of response in the five patients with a tumor response was 2.7 months (Fig. 2b). At the cut-off date for analysis, all patients had progressed and died. The median PFS was 3.2 months (95% CI 1.0–5.4) and the median OS was 8.1 months (95% CI 1.7–24.6) (Fig. 3).

The safety analysis revealed five patients with grade  $\geq 3$  treatment related adverse events: two patients with alkaline phosphate increases, one with ALT and aspartate aminotransferase (ASAT) increases, one with fatigue, one with gamma-glutamyltransferase (GGT) increase, and one with pneumonia. The most common adverse events (all grades) were ASAT increase in 67% of patients and visual disorders, nausea, edema, and ALT increase each occurring in 56% of patients (Fig. 4).

## 4 Discussion

The AcSé program provided patients with safe and secure access to innovative drugs, outside of their marketed indication. The esogastric cohort of the phase II AcSé crizotinib study assessed crizotinib in patients with esogastric adenocarcinomas having *MET*  $\geq 6$  copies. The incidence

**Table 1** Patient characteristics

Characteristics	<i>N</i> = 9
Primary tumor, <i>n</i> (%)	
Gastric	6 (67)
Esophagus	3 (33)
Gender, <i>n</i> (%)	
Male	8 (89)
Median age in years (range)	60 (44–80)
ECOG performance status, <i>n</i> (%)	
0	2 (22)
1	5 (56)
2	2 (22)
Time between metastatic disease diagnosis and inclusion, months (range)	20 (3–41)
Number of prior chemotherapy lines, <i>n</i> (%)	
2 lines	3 (33)
3 lines	3 (33)
≥ 4 lines	3 (33)
Type of prior chemotherapy, <i>n</i> (%)	
Platinum salt	9 (100)
Fluoropyrimidine	8 (89)
Taxane	8 (89)
Irinotecan	6 (67)
Gemcitabine	1 (11)
Ramucirumab	1 (11)
Trastuzumab	1 (11)
HER2 status, <i>n</i> (%)	
0	3 (33)
+	2 (22)
+++	1 (11)
Not assessed	3 (33)

of *MET*-amplified tumors was in line with that previous observed for gastric adenocarcinomas [2, 6]. However, to our knowledge, we are the first to report that the rate of *MET* amplified tumors for esophageal adenocarcinomas was twice that observed in gastric adenocarcinomas.

This study gave promising results with an ORR > 30% after two cycles of crizotinib in previously treated patients. Moreover, the ORR continued to increase after two cycles to reach a BOR of 56%. It is noteworthy that the patients enrolled in this study were heavily pre-treated: 66% having received at least three lines of treatment before the study. Thus, we suspect that the disease had become heterogeneous with several clonal populations: this may explain the limited effect of crizotinib observed.

Several other treatments have been evaluated in pre-treated patients with esogastric adenocarcinomas. In a randomized phase II trial in patients who had received one or two previous lines of treatment, regorafenib gave an ORR of 3.5%, a median PFS of 2.6 months, and OS of 5.8 months

[7]. In addition, a randomized phase III trial evaluated trifluridine-tipiracil in patients who had received at least two previous chemotherapy regimens. This treatment gave an ORR of 4%, a median PFS of 2.0 months and OS of 5.7 months [8]. Finally, the immune checkpoint inhibitor, pembrolizumab, as second-line treatment gave an ORR of 16%, a median PFS of 1.5 months, and OS of 9.1 months [9]. Thus, our observed efficacy with crizotinib compares well with those previously observed in patients with chemo-refractory tumor. Nevertheless, our results were obtained in the subgroup of patients with *MET* amplified tumors and cannot be extrapolated to all esogastric adenocarcinomas. Moreover, due to the few patients treated, a larger study is needed to confirm our results.

Crizotinib has a broad spectrum of activity and inhibits several kinases. More selective agents, with better safety profiles, need to be evaluated. Indeed, crizotinib toxicity is concerning especially when compared to that of other agents, including immune checkpoint inhibitors. Other c-MET inhibitors have demonstrated efficacy in treating *MET*-amplified esogastric adenocarcinomas. Capmatinib, a type Ib inhibitor that is highly specific for c-MET, gave an ORR of 22% in a recent phase I study [10]. Another study reported an ORR of 18%, a PFS of 3.4 months, and an OS of 7.9 months in patients with *MET*-amplified esogastric adenocarcinomas treated with AMG 337 [11]. Finally, a study treated 20 patients with *MET*-amplified gastric adenocarcinoma with the c-MET inhibitor savolitinib and reported an ORR of 50%. Interestingly, patients with high *MET* copy numbers had high response rates [12].

The pre-screening method used to identify patients more likely to respond is crucial. Previously, when IHC was used to select patients with c-MET positive tumor, IHC failed to predict efficacy of monoclonal antibodies targeting c-MET [3, 4]. It has been shown that *MET* amplification of ≥ 5 or ≥ 6 copies is associated with a worse prognosis [6, 13]. The threshold of ≥ 6 copies was derived from HER2 guidelines established in breast cancer [14]. The relevance of the threshold of ≥ 6 copies used in our study to select patients for crizotinib treatment has not been established. Thus, further studies need to explore the efficacy of c-MET inhibitors using other cut-off values for c-MET positivity. Our strategy for *MET* amplification screening is limited and the trial was prematurely stopped due to insufficient accrual. Indeed, extensive testing is required to select only a few treatable patients. Nevertheless, we expect that screening gene alterations or amplifications by next-generation sequencing techniques may become routine in the near future and will allow us to detect several targets simultaneously [15, 16]. Indeed, only 31% of patients with *MET*-amplified tumor were enrolled in our study. Unfortunately, the reason why some patients were not enrolled following positive screening results was

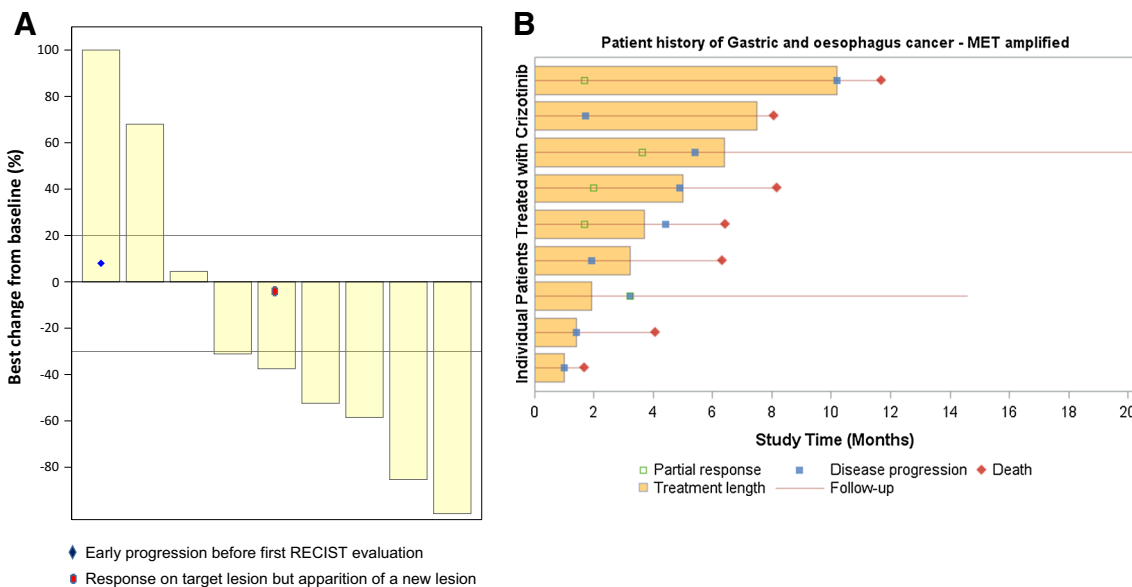


Fig. 2 a Waterfall plot for best overall response of target lesion from baseline. b Individual patient history

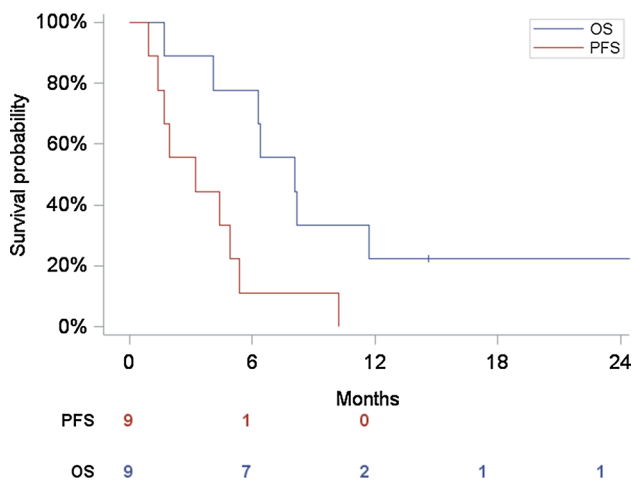


Fig. 3 Overall and progression-free survival

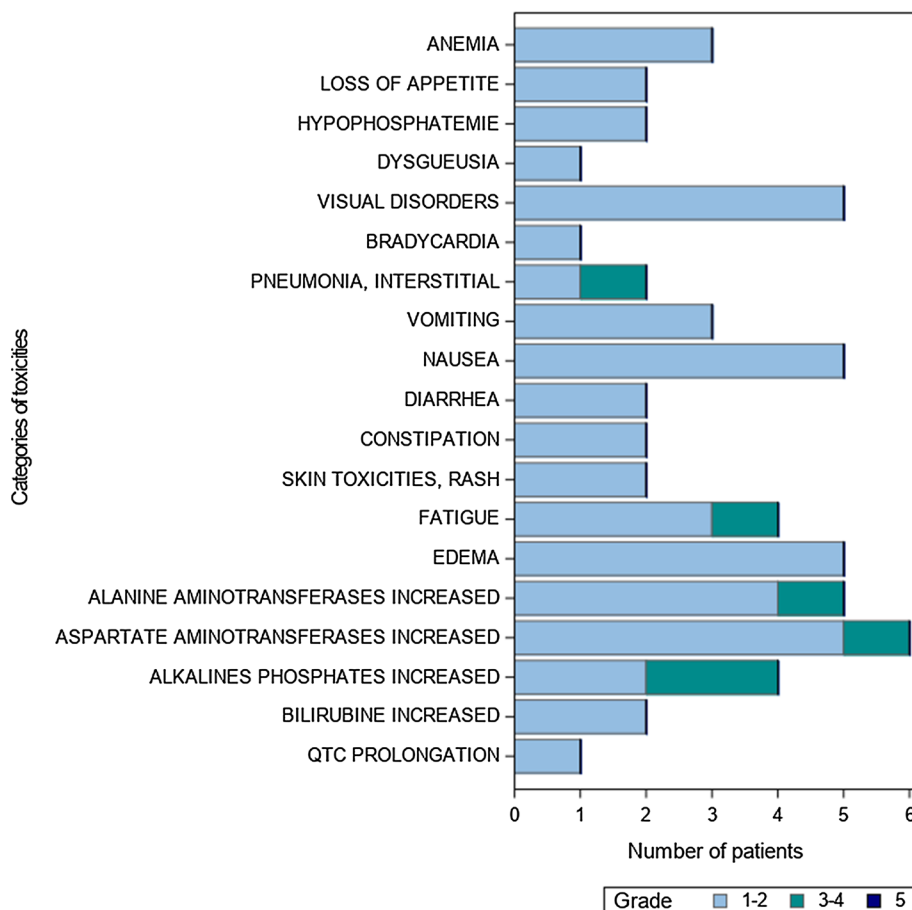
not collected. Perhaps the performance status of these heavily pre-treated patients rapidly declined, preventing treatment with crizotinib in our trial. Thus, we suggest that screening be performed as early as possible during the first palliative line of treatment and be restricted to patients considered fit enough for treatment.

We conclude that large-scale screening for *MET*-amplified esogastric adenocarcinomas is feasible. Nevertheless, only routine screening may offer opportunity to enroll enough patients for a large trial. *MET* amplification was observed in 5.5% of gastric adenocarcinomas and in 12.8% of esophageal adenocarcinomas. Crizotinib treatment shows encouraging results in selected patients. Consequently, c-MET inhibition for *MET*-amplified tumors deserves further evaluation.



**Fig. 4** Adverse events related to crizotinib

Distribution of patients with a maximum grade toxicities by category during treatment



**Acknowledgements** The authors acknowledge the patients and families involved in this study, and the AcSé Crizotinib investigator teams. The authors are very grateful to Marie-Cécile Le Deley (Oscar Lambret Cancer Center) for her important input in the design of the AcSé Program. They thank Trevor Stanbury (Unicancer) for providing medical writing support.

## Declarations

**Funding** This program was funded by the French National Cancer Institute (INCa), the ARC Foundation for Cancer Research, and Unicancer's personalized medicine research partners. This work was institutionally supported by Pfizer. No grant number is applicable.

**Conflict of interest** T. Aparicio has received honorarium from Roche, Ipsen, Amgen, Servier, Sanofi, and Bioven. L. Mineur has received honorarium from Merck, Servier, and Pierre Fabre and has received research grants from Amgen and Sanofi. R. Guimbaud has received honorarium from AAA, AstraZeneca, Amgen, BMS, Pierre Fabre, Novartis, Roche, and Servier. E. Samalin has received honorarium from Roche, Servier, Sanofi, MSD, BMS, Amgen, and Pierre Fabre. T. Lecomte has received honorarium from Ipsen, Amgen, Merck, Sanofi, Servier, Bayer, and Novartis. CA. Gomez-Roca has received honorarium from BMS, Roche, Pierre Fabre, Eisai, and Foundation Medicine, and has received research grants from Roche and BMS. G. Vassal has received honorarium from Bayer, Boehringer-Ingelheim, BMS, Celgene, Exelixis, Incyte Biosciences, Lilly, Merck, Novartis, Pfizer,

Roche/Genentech, Servier and Takeda. N. Cozic, C. De La Fouchardière, E. Meriaux, J. Plaza, F. Mary, PA. Haineaux, A. Grattet, J. Selves, Y. Menu, N. Colignon, L. Johnson, and F. Legrand declare that they have no conflicts of interest that might be relevant to the contents of this article.

**Ethics approval** The study was approved by the ethics committee (13 May 2013 by CPP Ile De France VII Kremlin Bicêtre, protocol 2013-000885-13)

**Availability of data** Data are available from the corresponding author upon reasonable request.

**Author contributions** Study design: TA, NCoz, GV. Data acquisition: TA, CF, EM, JP, LM, RG, ES, FM, TL, CAGR, PAH, AG, JS, YM, NCoz, FL. Statistical analysis: NCoz. Manuscript preparation: TA, NCoz, LI. Manuscript review: all authors.

**Consent for publication** Not applicable.

**Code availability** Not applicable.


**Open Access** This article is licensed under a Creative Commons Attribution-NonCommercial 4.0 International License, which permits any non-commercial use, sharing, adaptation, distribution and reproduction in any medium or format, as long as you give appropriate credit to the original author(s) and the source, provide a link to the Creative Commons licence, and indicate if changes were made. The images or other

third party material in this article are included in the article's Creative Commons licence, unless indicated otherwise in a credit line to the material. If material is not included in the article's Creative Commons licence and your intended use is not permitted by statutory regulation or exceeds the permitted use, you will need to obtain permission directly from the copyright holder. To view a copy of this licence, visit <http://creativecommons.org/licenses/by-nc/4.0/>.

## References

- Buzyn A, Blay J-Y, Hoog-Labouret N, Jimenez M, Nowak F, Deley M-CL, et al. Equal access to innovative therapies and precision cancer care. *Nat Rev Clin Oncol*. 2016;13(6):385–93.
- Lee J, Tran P, Klempner SJ. Targeting the MET pathway in gastric and oesophageal cancers: refining the optimal approach. *Clin Oncol*. 2016;28(8):e35–44.
- Catenacci DVT, Tebbutt NC, Davidenko I, Murad AM, Al-Batran S-E, Ilson DH, et al. Rilotumumab plus epirubicin, cisplatin, and capecitabine as first-line therapy in advanced MET-positive gastric or gastro-oesophageal junction cancer (RILOMET-1): a randomised, double-blind, placebo-controlled, phase 3 trial. *Lancet Oncol*. 2017;18(11):1467–82.
- Shah MA, Bang Y-J, Lordick F, Alsina M, Chen M, Hack SP, et al. Effect of fluorouracil, leucovorin, and oxaliplatin with or without onartuzumab in HER2-negative, MET-positive gastroesophageal adenocarcinoma: the METGastric randomized clinical trial. *JAMA Oncol*. 2017;3(5):620–7.
- Malka D, François E, Penault-Llorca F, Castan F, Bouché O, Benouna J, et al. FOLFOX alone or combined with rilotumumab or panitumumab as first-line treatment for patients with advanced gastroesophageal adenocarcinoma (PRODIGE 17-ACCORD 20-MEGA): a randomised, open-label, three-arm phase II trial. *Eur J Cancer*. 2019;115:97–106.
- Lennerz JK, Kwak EL, Ackerman A, Michael M, Fox SB, Bergthorn K, et al. MET amplification identifies a small and aggressive subgroup of esophagogastric adenocarcinoma with evidence of responsiveness to crizotinib. *J Clin Oncol*. 2011;29(36):4803–10.
- Pavlakakis N, Sjoquist KM, Martin AJ, Tsoibanis E, Yip S, Kang Y-K, et al. Regorafenib for the treatment of advanced gastric cancer (INTEGRATE): a multinational placebo-controlled phase II Trial. *J Clin Oncol*. 2016;34(23):2728–35.
- Shitara K, Doi T, Dvorkin M, Mansoor W, Arkenau H-T, Prokharau A, et al. Trifluridine/tipiracil versus placebo in patients with heavily pretreated metastatic gastric cancer (TAGS): a randomised, double-blind, placebo-controlled, phase 3 trial. *Lancet Oncol*. 2018;19(11):1437–48.
- Shitara K, Özgüroğlu M, Bang Y-J, Di Bartolomeo M, Mandalà M, Ryu M-H, et al. Pembrolizumab versus paclitaxel for previously treated, advanced gastric or gastro-oesophageal junction cancer (KEYNOTE-061): a randomised, open-label, controlled, phase 3 trial. *Lancet*. 2018;392(10142):123–33.
- Bang Y-J, Su W-C, Schuler M, Nam D-H, Lim WT, Bauer TM, et al. Phase 1 study of capmatinib in MET-positive solid tumor patients: dose escalation and expansion of selected cohorts. *Cancer Sci*. 2020;111(2):536–47.
- Van Cutsem E, Karaszewska B, Kang Y-K, Chung HC, Shankaran V, Siena S, et al. A multicenter phase II study of AMG 337 in patients with MET-amplified gastric/gastroesophageal junction/esophageal adenocarcinoma and other MET-amplified solid tumors. *Clin Cancer Res*. 2019;25(8):2414–23.
- Lee J, Kim ST, Kim K, Lee H, Kozarewa I, Mortimer PGS, et al. Tumor genomic profiling guides patients with metastatic gastric cancer to targeted treatment: the VIKTORY Umbrella Trial. *Cancer Discov*. 2019;9(10):1388–405.
- Graziano F, Galluccio N, Lorenzini P, Ruzzo A, Canestrari E, D'Emidio S, et al. Genetic activation of the MET pathway and prognosis of patients with high-risk, radically resected gastric cancer. *J Clin Oncol*. 2011;29(36):4789–95.
- Wolff AC, Hammond MEH, Schwartz JN, Hagerty KL, Allred DC, Cote RJ, et al. American Society of Clinical Oncology/College of American Pathologists guideline recommendations for human epidermal growth factor receptor 2 testing in breast cancer. *J Clin Oncol*. 2007;25(1):118–45.
- Massard C, Michiels S, Ferté C, Le Deley M-C, Lacroix L, Hollebèque A, et al. High-throughput genomics and clinical outcome in hard-to-treat advanced cancers: results of the MOSCATO 01 Trial. *Cancer Discov*. 2017;7(6):586–95.
- Cobain EF, Wu Y-M, Vats P, Chugh R, Worden F, Smith DC, et al. Assessment of clinical benefit of integrative genomic profiling in advanced solid tumors. *JAMA Oncol*. 2021;25:e207987. <https://doi.org/10.1001/jamaoncol.2020.7987>.

## Authors and Affiliations

Thomas Aparicio<sup>1</sup>  · Nathalie Cozic<sup>2,3</sup> · Christelle de la Fouchardière<sup>4,20</sup> · Emeline Meriaux<sup>5</sup> · Jérôme Plaza<sup>6</sup> · Laurent Mineur<sup>7</sup> · Rosine Guimbaud<sup>8</sup> · Emmanuelle Samalin<sup>9</sup> · Florence Mary<sup>10</sup> · Thierry Lecomte<sup>11</sup> · Carlos Gomez-Roca<sup>12,15</sup> · Paul-Arthur Haineaux<sup>13</sup> · Alain Gratet<sup>14</sup> · Jannick Selves<sup>15</sup> · Yves Menu<sup>16</sup> · Nikias Colignon<sup>16</sup> · Laetitia Johnson<sup>17</sup> · Frédéric Legrand<sup>18</sup> · Gilles Vassal<sup>19</sup>

<sup>1</sup> Gastroenterology and Digestive Oncology Department, Hôpital Saint Louis, AHP, Université de Paris, 1 Avenue Claude Vellefaux, 75010 Paris, France

<sup>2</sup> Department of Biostatistics and Epidemiology, Gustave Roussy, University Paris-Saclay, Villejuif, France

<sup>3</sup> Oncostat U1018, Inserm, University Paris-Saclay, Labeled Ligue Contre le Cancer, Villejuif, France

<sup>4</sup> Medical Oncology Department, Centre Léon Bérard, Lyon, France

<sup>5</sup> Institut du Cancer de l'Ouest-Centre René Gauducheau, Saint Herblain, France

<sup>6</sup> Hopitaux Privés de Metz-Hôpital Belle Isle, Metz, France

<sup>7</sup> Institut du cancer Sainte-Catherine Avignon Provence, Avignon, France

<sup>8</sup> University Hospital of Toulouse, Toulouse, France

<sup>9</sup> Medical Oncology Department, Institut du Cancer de Montpellier, Université de Montpellier, Montpellier, France

- 
- <sup>10</sup> Gastroenterology and Digestive Oncology, Hôpital Avicenne, AP-HP, Bobigny, France
- <sup>11</sup> Gastroenterology and Digestive Oncology, Tours University Hospital, UMR INSERM 1069, Université de Tours, Tours, France
- <sup>12</sup> Institut Claudius Regaud, Toulouse, France
- <sup>13</sup> Department of Medical Oncology, Poitiers University Hospital, Poitiers, France
- <sup>14</sup> Clinique Pasteur, Toulouse, France
- <sup>15</sup> IUCT-Oncopole, Toulouse, France
- <sup>16</sup> Hôpital Saint Antoine, APHP, Paris, France
- <sup>17</sup> Unicancer, Paris, France
- <sup>18</sup> Department of Clinical Research, Institut National du Cancer, Boulogne Billancourt, France
- <sup>19</sup> Gustave Roussy, Villejuif, France
- <sup>20</sup> Cancer Research Center of Lyon, UMR INSERM 1052, CNRS 5286, 69373 Lyon, France