



Groundwater quality for irrigation in an arid region—application of fuzzy logic techniques

Oussama Dhaoui^{1,2} · Belgacem Agoubi¹ · Isabel Margarida Antunes² · Lotfi Tlig³ · Adel Kharroubi¹

Received: 20 May 2022 / Accepted: 16 November 2022 / Published online: 23 November 2022
© The Author(s), under exclusive licence to Springer-Verlag GmbH Germany, part of Springer Nature 2022

Abstract

Groundwater is the main source to answer the irrigation supply in several arid and semi-arid areas. In the present work, groundwater quality for irrigation purposes in the arid region of Menzel Habib (Tunisia) for thirty-six groundwater samples is assessed considering the application of different conventional water quality indicators, particularly, electrical conductivity (EC), sodium absorption ratio (SAR), soluble sodium percentage (SSP), magnesium adsorption ratio (MAR), Kelly ratio (KR), and permeability index (PI). The results obtained indicate a variability for EC: 3.06 to 14.98 mS.cm⁻¹; SAR: 4.08 to 19.30; SSP: 35.78 to 71.53%; MAR: 34.19 to 56.01; PI: 38.47 to 72.74; and KR: 0.56 to 2.47. These results suggest that groundwater from Menzel Habib aquifer system is classified between excellent to unsuitable according to the applied water quality indices. Furthermore, the groundwater samples are also plotted in the Richards diagram classification system, based on the relation between SAR and EC, suggesting that almost groundwater samples present a harmful quality. Moreover, fuzzy logic model has been proposed and created to assess groundwater quality for irrigation. The membership functions are constructed for six significant parameters such as EC, SAR, SSP, MAR, KR, and PI and the rules are, then, fired to get a simple Fuzzy Irrigation Water Quality Index (FIWQI). The obtained groundwater quality results suggest that 3% of the samples from Menzel Habib region are considered as “good” for irrigation, 3% are classified as “good to permissible”, 33% with a “permissible” quality, 36% “permissible to unsuitable”, while 25% of groundwater present an “unsuitable” quality. Thus, the use of fuzzy logic techniques has more reliable and robust results by overcoming the uncertainties in the decision-making attributed to the conventional methods by the creation of new classes (excellent to good, good to permissible, and permissible to unsuitable) in addition to the classes proposed by Richards diagram classification (excellent, good, permissible, and unsuitable) to assess the groundwater quality suitability for irrigation purposes.

Keywords Menzel Habib · Water quality indices · Fuzzy logic · Agricultural use · Tunisia

Introduction

Groundwater is considered as a life-sustaining resource on the support of socioeconomic growth, ecosystem functions, and particularly, human health (e.g., Steube et al. 2009; Ghimire et al. 2021; Amrani et al. 2022; Bucton et al. 2022; Zhai et al. 2022). Otherwise, climate change plays a crucial feature on the contribution to groundwater quantity due to the precipitation irregularity and, thus, the variation of groundwater recharge, particularly in arid and semi-arid regions (e.g., Gemitzi et al. 2017; Kahsay et al. 2018; Nyembo et al. 2021; Ashraf et al. 2022; Chi et al. 2022; Mensah et al. 2022). In recent decades, the supply of groundwater, mainly freshwater, is insufficient to answer the requirement in different sectors, including agriculture which is considered as the main consumer of groundwater

Responsible Editor: Xianliang Yi

✉ Oussama Dhaoui
dhaoui.oussama2013@gmail.com

¹ Higher Institute of Water Sciences and Techniques, Applied-Hydrosciences Laboratory, University of Gabes, University Campus, 6033 Gabes, Gabes, Tunisia

² Institute of Earth Sciences, Pole of University of Minho, Campus de Gualtar, 4710-057 Braga, Portugal

³ Higher Institute of Informatics and Multimedia of Gabes, University Campus, 6033 City El Amel 4, Gabes, Tunisia

resources with more than 60% of freshwater is used for irrigation purposes (Aliyu et al. 2017; Kawo and Karuppanan 2018). Water quality assessment is a critical worldwide concern to understand the necessary management changes which should be applied for short term and long term and will influence all socioeconomic sectors and threaten the durability of water resources and agricultural lands (Kavurmacı and Karakuş 2020; Bera et al. 2021; Dhaoui et al. 2022; Tzemi and Mennig 2022).

A sustainable socioeconomic development depends on the availability of freshwater resources (Ghazaryan et al. 2020) considering that the application of groundwater with low quality for irrigation purposes can lead to economic losses, destroying the ecosystem and harmful diseases for human-being (Schwarzenbach et al. 2010). Indeed, a sustainable groundwater resources management will be crucial to avert economic losses, particularly, in arid and semi-arid environments. Therefore, the efficiency of resources management will be conditioned by protection of water quality (Kavurmacı and Karakuş 2020).

Groundwater quality is influenced by several natural and/or anthropogenic factors, such as hydrogeology, rock weathering, ion exchange phenomena, evaporation processes, groundwater flow, and anthropogenic activities (e.g., Agoubi et al. 2012; Kharroubi et al. 2012; Isawi et al. 2016; Alabjah et al. 2018; Telahigue et al. 2018; Abul Qasim et al. 2022; Elmeknassi et al. 2022), as well as by climate change (e.g., D'Alessandro et al. 2017; Burri et al. 2019; Hu et al. 2019; Goswami et al. 2022; Ouhamdouch et al. 2022).

Several studies on water quality assessment have been developed using different techniques to investigate water quality, mainly based on physical properties, chemical relations, and water quality indices (WQI), some of them applied in semi-arid regions (e.g., Ben Alaya et al. 2013; Pazand and Javanshir 2014; Abd El-Aziz 2017; Prasad et al. 2019; Tian and Wu 2019; Al Maliki et al. 2020; Ghazaryan et al. 2020; Sehlaoui et al. 2020; Yurtseven and Randhir 2020; Aladejana et al. 2021; Jaydhar et al. 2022; Naik et al. 2022; Tampo et al. 2022).

Different conventional or traditional water quality indices, such as soluble sodium percentage (SSP), sodium adsorption ratio (SAR), magnesium adsorption ratio (MAR), permeability index (PI), Kelly ratio (KR), and residual sodium carbonate (RSC), are used to assess the groundwater suitability for irrigation purposes (e.g., Khan et al. 2015; Safiur Rahman et al. 2017; Tanvir Rahman et al. 2017; Beyene et al. 2019; Ghazaryan et al. 2020; Khmila et al. 2021; Ayyandurai et al. 2022; Mukherjee et al. 2022; Rostammiri et al. 2022). Besides, different authors have applied geostatistical methodologies to assess water suitability for irrigation supplies (e.g., Sutadian et al. 2017; Boufekane and Saighi 2019; El Bilali and Taleb 2020; Jahin et al. 2020; Solgi and Jalili 2021).

The traditional hydrochemical and statistical methods use the Boolean logic, considering exact or crisp values representing the boundaries between various classified groups. The conventional water quality index values are, then, ranged between 0 and 1 (e.g., true or false), and thus, for the same water sample, more than one water quality classes could be assigned with the application of previous indices, contributing to an imprecision for water quality classification (Icaga 2007). Thus, it is important to apply some advanced methods to assess groundwater quality more accurately than the traditional methods.

In the last decades, in order to overcome this subjectivity, the shortcomings, and the environmental uncertainty in groundwater quality assessment procedure, artificial intelligence (AI) models are extensively applied concerning to their flexibility and simplicity (e.g., Mujumdar and Sasi-kumar 2002; Rezaei et al. 2013; Meyers et al. 2017; Nadiri et al. 2017, 2019; Agoubi et al. 2018; Rajaee et al. 2019; Bedi et al. 2020; Das and Pal 2020a, 2020b; Jha et al. 2020; Lu and Ma 2020; Ruidas et al. 2021, 2022; Arabameri et al. 2022; Osiakwan et al. 2022; Pal et al. 2022; Pham et al. 2022). Indeed, fuzzy logic (FL) techniques are highly used and show a higher capability in capturing complex environmental problems related to groundwater (e.g., McKone and Deshpande 2005; Agoubi et al. 2016; Duhalde et al. 2018; Tafreshi et al. 2018; Jaiswal and Ballal 2020; Jha et al. 2020; Arasteh and Farjami 2021; Kord and Arshadi 2022), proving their strength to overcome non-linearity, ambiguity, and uncertainty of environmental issues (Agoubi et al. 2016; Tirupathi et al. 2019). Moreover, several previous research works have applied and verified the importance of fuzzy logic techniques to converge an ambiguous decision into a state of acceptance (Cho and Lee 2020). Fuzzy logic has ability to convert vagueness, uncertainty, and variability to a mathematical structure and is widely used in groundwater quality evaluation, usually combined with geostatistical tools and GIS approaches (e.g., Ostovari et al. 2014; Khashei-Siuki and Sarbazi 2015; Li et al. 2018; Jafari and Nikoo 2019; Shwetank and Chaudhary 2019; Jha et al. 2020; Pathak and Bhandary 2020). FL is, then, considered as an important tool to convey the results to the beneficiaries in a more understandable and reliable linguistic format (Raman et al. 2009; Alavi et al. 2010; Agoubi et al. 2016; Vadiati et al. 2016; Shwetank and Chaudhary 2019; Ahmad et al. 2020).

Tunisia region is threatened by water scarcity problems mainly associated to its arid and semi-arid climate. It is also characterized by an unstable climate with irregularity in rainfall spatial distribution and quantity, mainly represented by alternating of intensive rainy and drought periods, contributing to a global increase in groundwater resources. Indeed, in the Menzel Habib area (southeastern Tunisia) groundwater resources are mainly applied for agricultural

supplies, and groundwater assessment quality will be crucial for a sustainable water resource management.

Thus, the current study is aimed at assessing the groundwater quality suitability for irrigation purposes from Menzel Habib aquifer system using a combined application of different water quality indices and Fuzzy Irrigation Water Quality Index (FIWQI) determined by fuzzy logic techniques.

Materials and methods

Groundwater from the aquifer system

The Menzel Habib region is located on the North of Africa, on the southeastern of Tunisia, northwest the city of Gabès between latitudes 3,761,904.56 and 3,798,891.65 N and longitudes 523,087.79 and 589,234.20 E (Fig. 1a). The region is characterized by an arid climate and a complex geology, which includes formations from Triassic to Quaternary ages.

The aquifer system is composed by three different layers starting from the shallow aquifer which is logged in sandy-loam formation with plio-quaternary age and characterized by a depth ranging between 10 and 65 m. The Senonian aquifer, which corresponds to the first deep aquifer, occurs in marl levels with limestone layers, while the

Cenomanian–Turonian layer is logged in the limestone and marl-limestone formations (Fig. 1b).

Groundwater from Menzel Habib aquifer system is mainly destined to agricultural needs. However, the extremely high salinity of the Cenomanian–Turonian groundwater layer (Ben Cheikh 2013) does not allow the exploitation of this water to agricultural activities. Groundwater samples are extracted from two aquifer layers from the Menzel Habib aquifer system corresponding to the shallow (Plio-Quaternary) and deep (Senonian) aquifers. The groundwater quality assessment from shallow and deep aquifers will be considered in this study.

A total of thirty-six groundwater samples were extracted from water supply boreholes and wells used for agricultural needs from the Menzel Habib aquifer system. Twenty-five samples were collected from the shallow aquifer (P1 to P25; Fig. 1b) and eleven samples from the deep aquifer (G1 to G11; Fig. 1b). After pumping the boreholes for a minimum period of 15 min, groundwater samples were collected, stored, and transferred to the laboratory in polyethylene bottles. Physico-chemical parameter, notably, electrical conductivity (EC), was determined in the field using a multi-parameter analyzer (C933 multi-parameter). On the laboratory, groundwater samples were filtered using a 0.45 µm Millipore filter and prepared to analytical determinations. By the titration method with hydrochloric

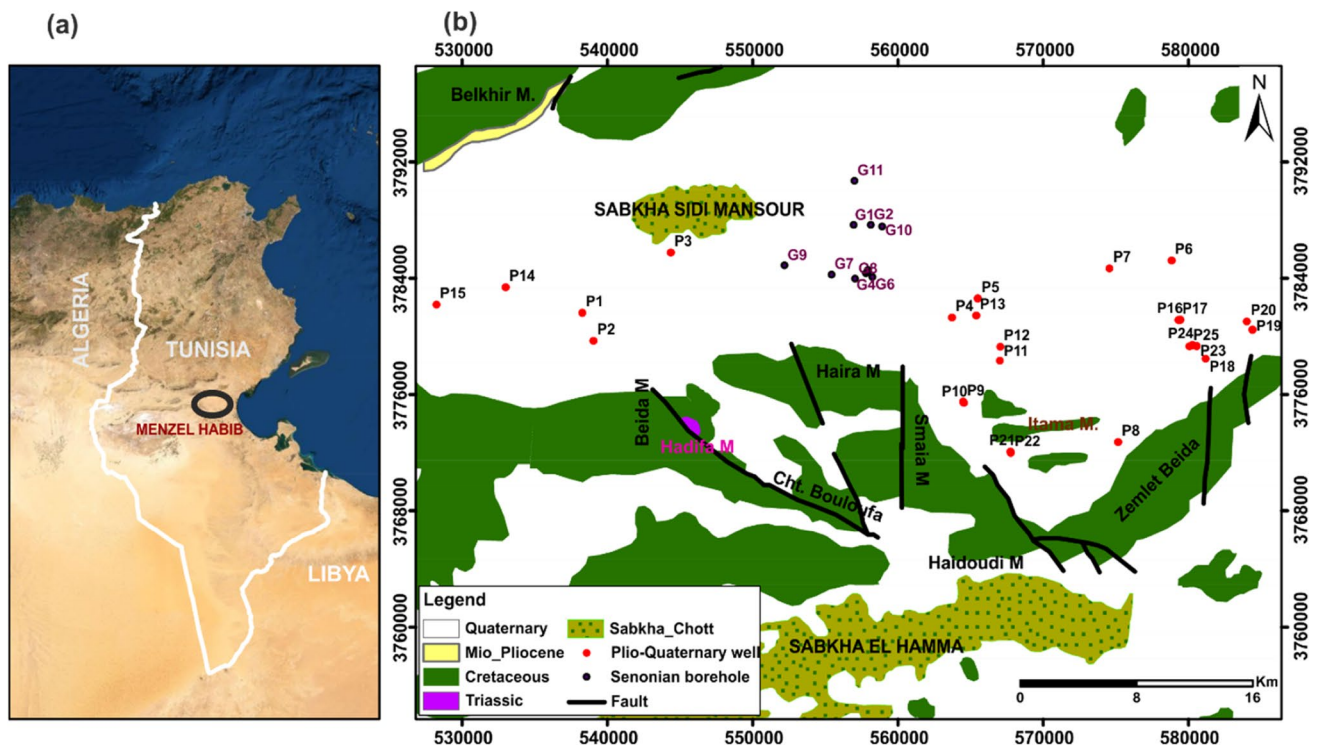


Fig. 1 Menzel Habib area: (a) geographical location; (b) simplified geological map of the aquifer system, including the spatial distribution of groundwater samples from shallow (P) and deep (G) aquifers

acid (HCl), bicarbonate (HCO_3) water contents were determined. Selected cations (Na, K, Ca, and Mg) and anions (F, Cl, Br, and SO_4) water contents were measured through an ionic liquid chromatography Metrohm 850 Professional IC. The quality and efficiency of hydrochemical data were proved through the calculation of ionic charge balance and were within $\pm 5\%$ error. All the laboratory analyses were developed at the Integrated Laboratory of Water Sciences, Higher Institute of Water Sciences and Techniques of Gabès (Tunisia).

Irrigation water quality parameters

Groundwater quality assessment is crucial to evaluate the suitability of water resources for crop irrigation. Each crop needs water with predefined physicochemical parameters. Several and combined indices to assess groundwater quality for irrigation practices will be applied on the Menzel Habib region.

The evaluation of water quality for irrigation purposes is conditioned by water quality indices that are fixed by different organizations and agencies (Ayers and Westcot, 1994; El Bilali and Taleb 2020), with possible implications, such as a poor growth and associated quality if the water does not satisfy crop requirements (Moharir et al. 2019). In the present study, electrical conductivity (EC), sodium adsorption ratio (SAR), soluble sodium percentage (SSP), magnesium adsorption ratio (MAR), permeability index (PI), and Kelly ratio (KR) were considered as water quality indexes. All the ion contents are expressed in meq L^{-1} and applied on the following Eqs. (1) to (5):

- (1) SAR (Richards 1954):

$$SAR = \frac{Na}{\sqrt{\frac{Ca+Mg}{2}}}$$

- (2) SSP (Kopittke et al. 2006):

$$SSP = \frac{Na}{Ca + Mg + Na} \times 100$$

- (3) MAR (Szabolcs and Darab 1964):

$$MAR = \frac{Mg}{Ca + Mg}$$

- (4) PI is expressed in % (Ragunath 1987):

$$PI = \frac{Na + \sqrt{\text{HCO}_3}}{Ca + Mg + Na} \times 100$$

- (5) KR (Kelly 1963):

$$KR = \frac{Na}{Ca + Mg}$$

Fuzzy logic

Fuzzy logic was developed by Lofti A. Zadeh in 1965 considering the fuzzy subset theory. Fuzzy subsets are a mathematical way of representing the imprecision of natural language and could be considered as a generalization of classical set theory (Zadeh, 1965; Ross, 2005; Baghel and Sharma 2013; Shwetank and Chaudhary 2019). Fuzzy logic is also called “linguistic logic” because its truth values are words from everyday language (e.g., “rather true, almost false, far, so far, near, big, and small”). Fuzzy logic aims to study the representation of imprecise knowledge and approximate reasoning (Gacôgne 1997; Shwetank and Chaudhary 2019) and tries to model vague notions of natural language to compensate for the inadequacy of classical set theory in this domain.

In classical set theory, the membership of an element to a subset is Boolean. Fuzzy subsets allow to know the degree of membership of an element to the subset. A fuzzy subset A of a universe of discourse U is characterized by a membership function (Zadeh 1965):

$$\mu_A : U \rightarrow [0, 1]$$

where μ_A is the level or degree of membership of an element of the discourse universe U in the fuzzy subset.

In fuzzy logic concepts, the data is normally represented by linguistic variables. A linguistic variable is a variable whose values are words or phrases commonly used in a natural language or an artificial language (Zadeh 1975). A linguistic variable is defined by:

$$(X, U, T(X), \mu_x)$$

where X denotes the name of the variable, U is the universe of discourse associated with the variable X (also called the reference frame), $T(X) = \{T_1, T_2, \dots, T_n\}$ is the set of linguistic values of the variable X (also called linguistic terms or linguistic labels), and finally, μ_x is the membership function associated with the set of linguistic terms.

A fuzzy inference system (FIS) also aims to transform input data into output data from the evaluation of a set of rules. The inputs come from the fuzzification process, and the sets of rules are normally defined by the expert’s knowledge (Vadiati et al. 2019; Agoubi et al. 2016; Priya 2013) and the standards proposed by Ayers and Westcot (1994). A FIS consists of three steps (Malik et al. 2021): (a) fuzzification, (b) inference, and (c) defuzzification.

The first step is fuzzification consisting in the characterization of the linguistic variables of the system. It is a

transformation of the real inputs into a fuzzy part defined on a representation space linked to the input. This spatial representation is normally a fuzzy subset. During the fuzzification step, each input and output variable is associated with fuzzy subsets which could have several shapes (e.g., trapezoidal, triangular, and Gaussian). Trapezoidal shape of membership functions is used in this study considering the advantageous because it is asymmetric (Castillo and Melin 2008), although the gradient of the membership values develops over the same slope value and will classify the water quality variables more accurately (Al Mamun et al. 2019). The function could be indicated as:

$$f(x, a, b, c, d) = \begin{cases} 0 & x < a \text{ or } d < x \\ \frac{a-x}{a-b} & a \leq x \leq b \\ 1 & b \leq x \leq c \\ \frac{d-x}{d-c} & c \leq x \leq d \end{cases}$$

where x is considered as the variable that will be fuzzified; $a, b, c,$ and d are defined the linguistic variables which are used to split the parameters into different classes (Fig. 2).

The second step is the inference engine, which is a mechanism for condensing the information of a system through a set of rules defined for the representation of any problem. Each rule delivers a partial conclusion that will be aggregated with the other rules to provide a conclusion (aggregation). The rules constitute the fuzzy inference system and are constructed using different operators such as “AND, OR, NOT.”

The third step is defuzzification, corresponding to the reverse of fuzzification, and will transform the fuzzy outputs of the inference into a non-fuzzy value as the final answer of the fuzzy inference system (FIS).

Fuzzy rules are generally represented by “IF ... THEN” and allow to define the relation between the input and output variables. More precisely, a fuzzy rule is defined as follows (Agoubi et al. 2016):

$$\text{if } x \text{ is } A \text{ then } y \text{ is } B$$

where A and B are linguistic variables defined in a universe of discourse X and Y . The first part of the rule “ x is A ” will be the antecedent, while the second part of the rule “ y is B ,” will be the consequent.

The Mamdani approach in fuzzy toolbox of MATLAB software is used to develop fuzzy inference system (FIS) to classify groundwater for irrigation purposes. SAR, SSP, KR, PI, MAR, and electrical conductivity (EC) are considered as the inputs, and the Fuzzy Irrigation Water Quality Index (FIWQI) will be the output (Fig. 3).

Results and discussion

Geochemistry of groundwater and water quality indicators

A statistical summary of groundwater physio-chemical parameters from Menzel Habib shallow and deep aquifer, considering maximum, minimum, standard deviation, and mean values, is presented in Fig. 4. For the shallow aquifer, the chemical element contents range between 879 and 2876 mg/L for SO_4 (mean: 1507 mg L⁻¹), 490 and 3265 mg L⁻¹ for Cl (mean: 1415 mg L⁻¹), 67 and 189 mg L⁻¹ for HCO_3 (mean: 137 mg L⁻¹), 319 and 2065 mg/L for Na (mean: 946 mg L⁻¹), 176 and 895 mg L⁻¹ for Ca (mean: 367 mg L⁻¹), 110 and 342 mg L⁻¹ for Mg (mean: 170 mg

Fig. 2 Illustration of trapezoidal of fuzzy membership function

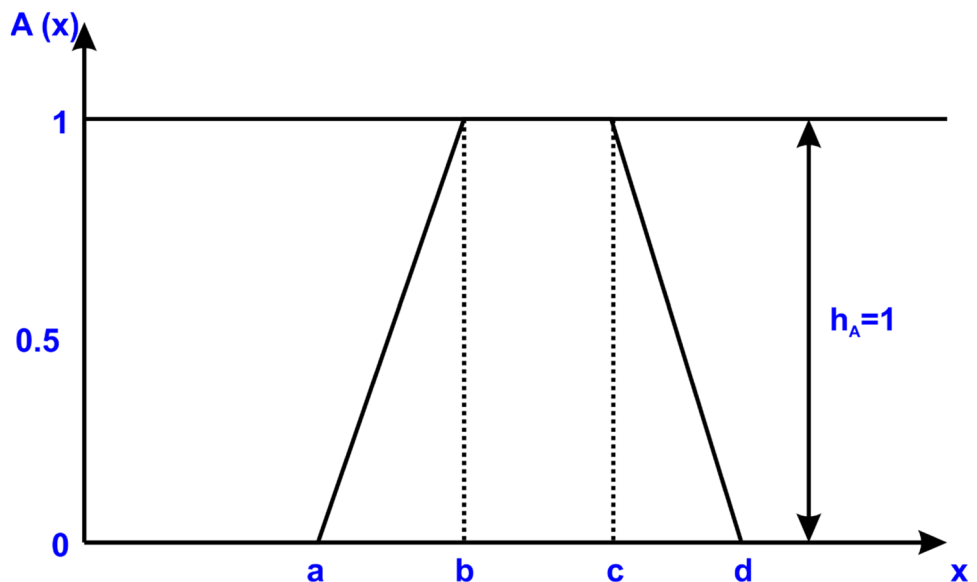


Fig. 3 Structure of fuzzy model

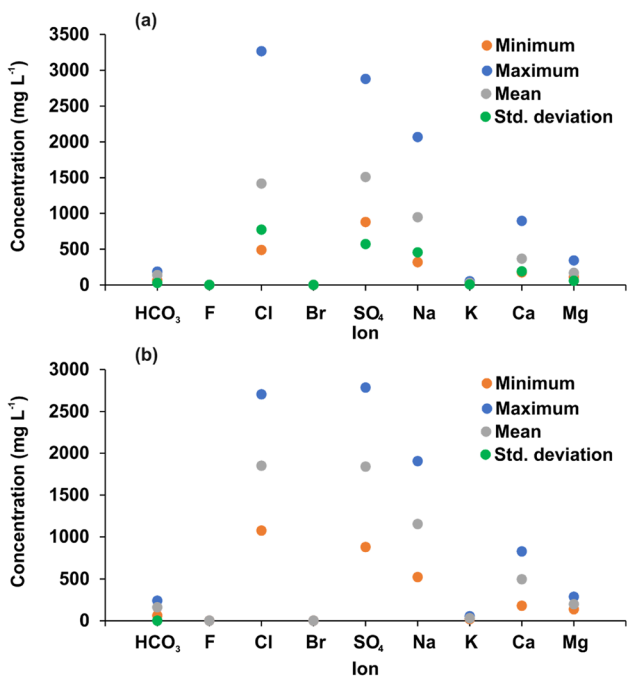
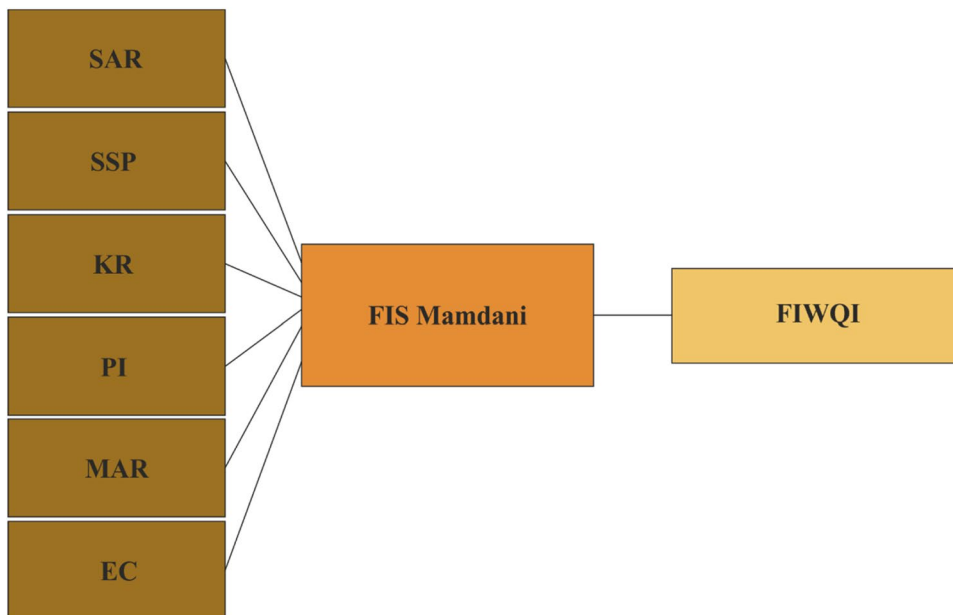


Fig. 4 Descriptive statistics of chemical elements from Menzel Habib (a) shallow aquifer; (b) deep aquifer

L^{-1}), and 18.27 and 53.01 $mg L^{-1}$ for K (mean: 28.94 $mg L^{-1}$) (Fig. 4a). However, for the deep aquifer (Fig. 4b), the chemical element contents range between 1074 and 2704 mg/L for Cl (mean: 1848 $mg L^{-1}$), 880 and 2785 $mg L^{-1}$ for SO_4 (mean: 1838 $mg L^{-1}$), 60 and 237 $mg L^{-1}$ for HCO_3 (mean: 160 $mg L^{-1}$), 521 and 1902 $mg L^{-1}$ for Na (mean: 1152 $mg L^{-1}$), 179 and 826 $mg L^{-1}$ for Ca (mean:

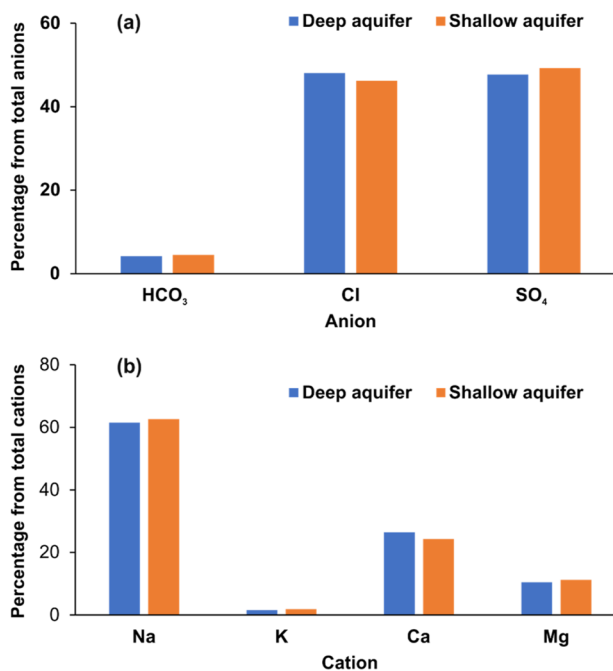


Fig. 5 Mean values for groundwater major (a) anions, (b) cations

495 $mg L^{-1}$), 135 and 285 $mg L^{-1}$ for Mg (mean: 197 $mg L^{-1}$), and 17.59 and 52.62 $mg L^{-1}$ for K (mean: 29.25 $mg L^{-1}$). Nevertheless, the Br and F groundwater contents are very low for both aquifers. Consequently, a spatial variation can be observed on the major anions and cations from groundwater samples. The dominance of groundwater ions is classified as the following order: from shallow aquifer $SO_4 > Cl > HCO_3 > Br > F$ for anions (Fig. 5a)

and $Na > Ca > Mg > K$ for cations (Fig. 5a); from deep aquifer $Cl > SO_4 > HCO_3 > Br > F$ for anions (Fig. 5a) and $Na > Ca > Mg > K$ for cations (Fig. 5b).

The main source of groundwater ion composition for both aquifers could be evaluated using the saturation indices of different minerals (Fig. 6a). As a result, negative saturation indices are registered for halite, anhydrite, and gypsum, while positive ones characterize dolomite and calcite. Thus, the main hydrogeochemistry origin should be associated to the dissolution of evaporites and dissolution/precipitation of carbonates (Farid et al. 2012; Patel et al. 2016; Argamasilla et al. 2017; Bahir et al. 2018; Mejri et al. 2018; Dhaoui et al. 2021, 2022; Sunkari et al. 2021). Some groundwater samples are represented by an

adsorption of Na and release of Ca, while others are characterized by adsorption of Ca and release of Na (Fig. 6b). That leads to confirm that cationic exchange and inverse cationic exchange with soil and aquifer materials could also be identified as main origins of major ions (Abid et al. 2009; Ahmed et al. 2013; Kammoun et al. 2018; Dhaoui et al. 2021, 2022).

Considering groundwater quality parameter standards for irrigation purposes (Table 1), different water quality indices will be calculated for shallow and deep aquifer system concerning groundwater ion contents combined with physical parameters. Groundwater quality is classified into four classes based on the indices: excellent, good, permissible, and unsuitable (Table 1).

Fig. 6 (a) Saturation index of different minerals; (b) $Ca + Mg - (HCO_3 + SO_4)$ versus $Na + K - Cl$

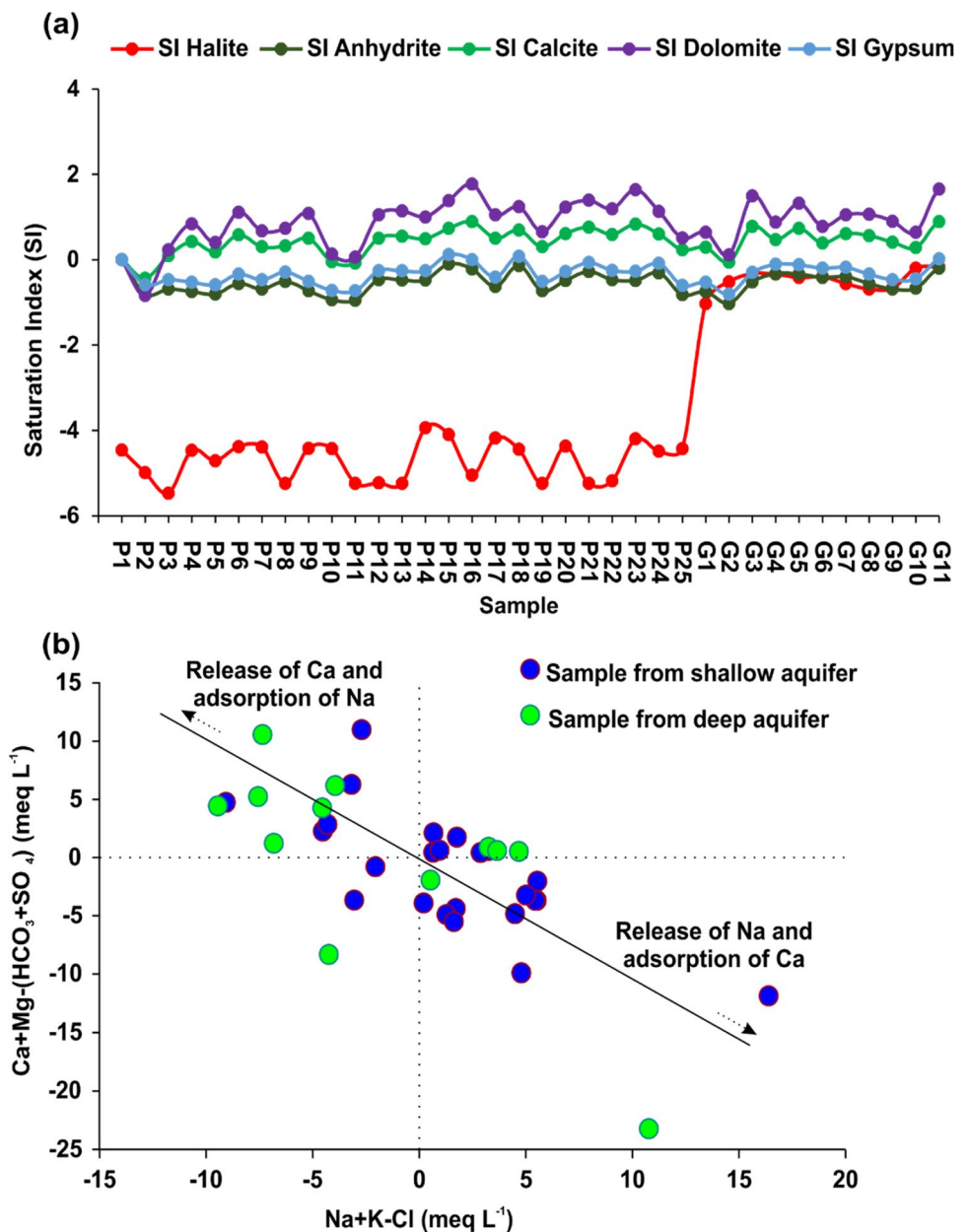


Table 1 Irrigation water quality parameters

SAR	SSP	KR	PI	MAR	EC	Water Classification
< 9	< 20	< 0.7	> 75	< 17	< 250	Excellent
10–17	20–40	0.7–1	50–75	17–34	250–750	Good
18–25	40–80	1–1.2	25–50	34–50	750–3000	Permissible
> 25	> 80	> 1.2	< 25	> 50	> 3000	Unsuitable

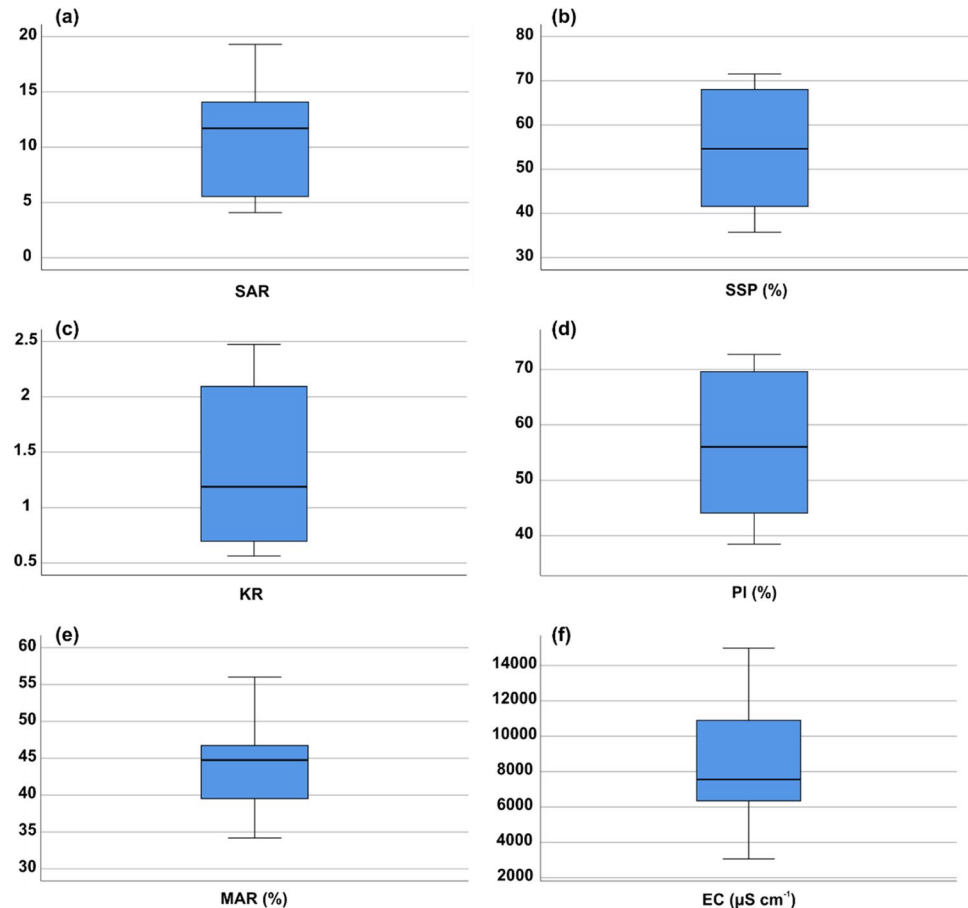
The SAR groundwater quality index is considered as one of the foremost parameters to review the water quality suitable for irrigation. For Menzel Habib aquifer system groundwater, SAR varies between 4.08 and 19.3 (Fig. 7a) which reflect that 36% of groundwater samples have an excellent quality and 64% with a good quality.

The SSP groundwater parameter is an important parameter to assess the suitability of water to irrigation considering that an excess of sodium water content could affect the plant growth. In the present study, the SSP values range between 35.78 and 71.53% (Fig. 7b). Additionally, the SSP allows to detect that 17% of the groundwater samples are of good quality, while 83% are permissible and, consequently, deemed for irrigation purposes.

The KR groundwater quality parameter varies from 0.56 to 2.47 (Fig. 7c), allowing that 25% of groundwater samples

have an excellent quality, 11% are of good quality, and 14% permissible. Otherwise, 50% of groundwater samples are unsuitable for irrigation purposes. The obtained results indicate that Menzel Habib groundwater is polluted by alkali hazard, according to defined criteria (Karanth 1987).

Indeed, the groundwater quality indices (SAR, SSP, and KR) may evaluate the sodium adsorption degree by the soil in water with its negative or positive influence on crop yields. Besides, Ca groundwater content is lower than Na content (Fig. 5b) because of the ionic substitution, including cationic exchange and reverse cationic exchange, could have occurred (Tanvir Rahman et al. 2017). This substitution could enhance a breakdown of physical structure of the soil irrigated by this water, with the magnesium and calcium replacement by the high concentration of sodium yielding to sodic enrichment in the soil, thus, soil structure destroying,

Fig. 7 Boxplot of groundwater quality parameters: (a) SAR; (b) SSP (%); (c) KR; (d) PI (%); (e) MAR (%); (f) EC ($\mu\text{S cm}^{-1}$)

dispersion of clay, permeability and plant growth reducing as discussed by other researchers (Nagarajah et al. 1988; Subba Rao et al. 2012, 2021; Olofinlade et al. 2018), in which the soil could not support crop yields due to the soil permeability reduction. As a result, the plant roots could not receive nutrients issued from the soils because they could not properly absorb water.

Sodium, calcium, magnesium, and bicarbonate soil contents will affect the soil permeability, which could be related to PI groundwater quality indices for irrigation purposes. In the study area, the PI values range between 38.47 and 72.74% (Fig. 7d). Consequently, 64% of the groundwater samples are classified as with a good quality, while 36% are considered permissible for irrigation purposes.

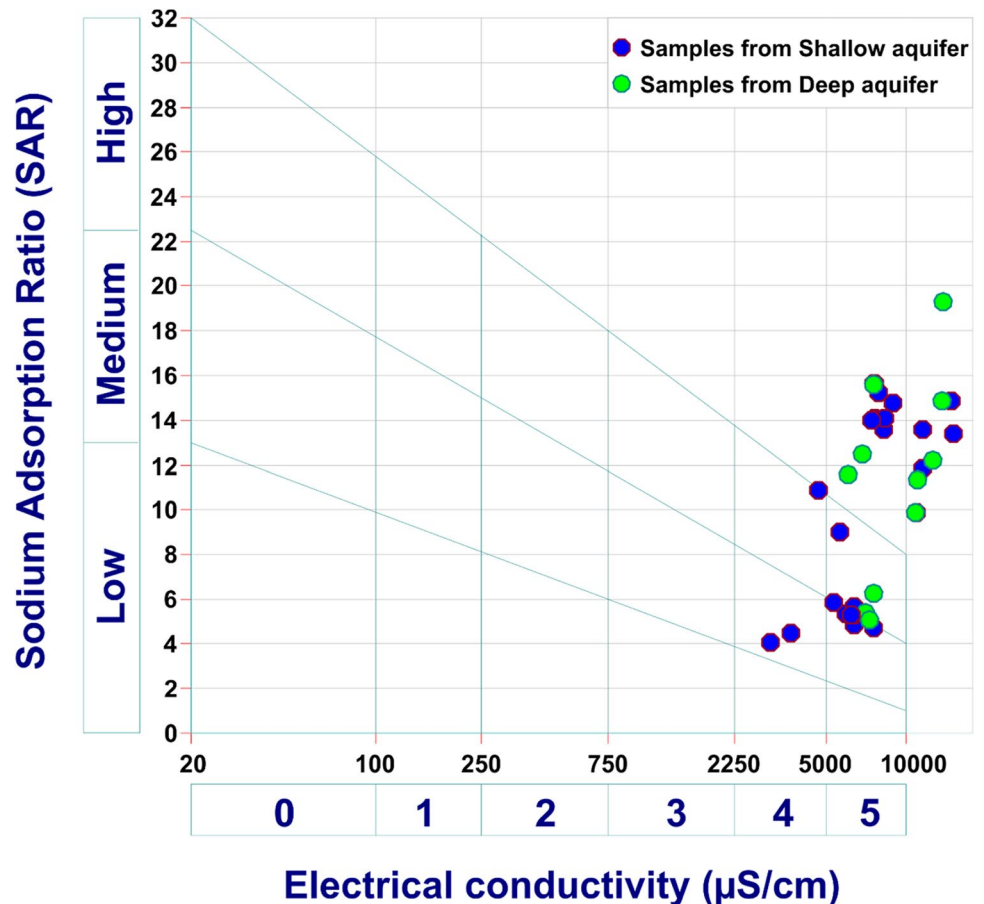
The MAR indices can also characterize groundwater quality concerning the excess of magnesium over calcium water content. In the aquifer system from Menzel Habib, groundwater MAR values range between 34.19 and 56.01% (Fig. 7e). The application of MAR index classifies the groundwater samples into two groups. The first group, containing 92% of the groundwater samples, is considered suitable for irrigation (MAR < 50%), while the second group, with 8% of the groundwater samples, is classified as unsuitable for irrigation. Groundwater exceeding the allowed

standard (MAR > 50%) will promote an increasing in soil alkalinity and an adverse effect on crop yields. The continuous application of unsuitable groundwater will cause negative risks, a consequent need of interventional plans.

Calcium and Mg have different behavior in the soil. The high Mg content will negatively affect the soil structure, particularly associated with a high water salinity and high density of sodium. Generally, high Mg water contents will result in a highly exchangeable Na (Fig. 6b) in the irrigated soils (FAO, 2008). This situation could negatively influence the soil quality and contribute to poor yield crop. Consequently, soils irrigated by high salinity water will be infertile owing to the deposition of sodium carbonate (Keesari et al. 2016).

To provide a more efficient management of groundwater suitability for irrigation purposes, EC (Fig. 7f) and SAR parameters were plotted on the diagram of Richards, considering the USSL (United States Salinity Laboratory) classification (Fig. 8). The irrigation water, with respect to EC according to Richards diagram, are classified as C1, excellent water for irrigation (could be applied in all type of soils); C2, good water for irrigation (could be applied in all plants provided a medium degree leach forms); C3, permissible water for irrigation (cannot be used on soils with limited drainage, other plants could tolerate); C4, doubtful for

Fig. 8 Groundwater samples plotted in the Richards diagram



irrigation due to very high salinity; and C5, unsuitable for irrigation associated to an extremely high salinity. Relatively to SAR parameter, water for irrigation could be classified as S1, excellent water for all type of soils ($SAR < 13$); S2, good water for irrigation ($SAR: 13–22$); S3, water doubtful for irrigation ($SAR: 22–32$); and S4, unsuitable water for irrigation ($SAR > 32$). The soil irrigated with S2 and S3 water types will require a special management concerning to possible production of sodium oxide hazardous.

The Richards diagram revealed that three groundwater samples from Menzel Habib aquifer system fall within the C4S2, nine fall within C5S2, one is classified in C4S3, five in C5S3, and the other groundwater samples are characterized by a SAR ratio more than 10 and an extremely high salinity (Fig. 8). The high levels of Na and EC registered for almost groundwater samples, could be derived from ionic leaching, weathering of rocks and anthropogenic activities, particularly, related to agricultural activities.

Indeed, almost groundwater samples from the study area should not be applied under natural conditions (e.g., plant non-tolerant for salinity, without drainage network; Ayers and Westcot 1994; FAO 1997). Nevertheless, this groundwater type could be applied in areas that require soil management or with permeable soil and containing crops that are tolerant to salinity. Therefore, a particular soil treatment in areas with a high leaching and high organic matters associated to good drainage conditions will be required to the

crops growing using this quality of water. It could also be used on the soil with calcium-enriched soil water. The need to gypsum/soil modification is required to apply and use these water resources for irrigation purposes (Mukherjee et al. 2022).

FIWQI

The calculation of groundwater quality parameters from Menzel Habib aquifer system will be crucial to get accurate decisions to manage groundwater in this region. There is an uncertainty and overlap in decision-making considering groundwater quality of some analyzed groundwater samples. Thus, in the study area, groundwater samples are characterized by values on the range limits, which could lead to a confusion on the decision in situations that can be classified in more than one groundwater quality class for irrigation purposes. Hence, the groundwater quality of Menzel Habib area was assessed applying more accurate fuzzy logic approaches.

Sodium absorption ratio, EC, SSP, MAR, PI, and KR, as representative groundwater quality indicators, are considered as the inputs of the fuzzy index process. Then, the resulted membership functions are considered and constructed (Fig. 9). The obtained FIWQI has a score that ranges from 0 to 1 (Fig. 10), and it is the output resulted from defuzzification for the considered groundwater samples. The fuzzy

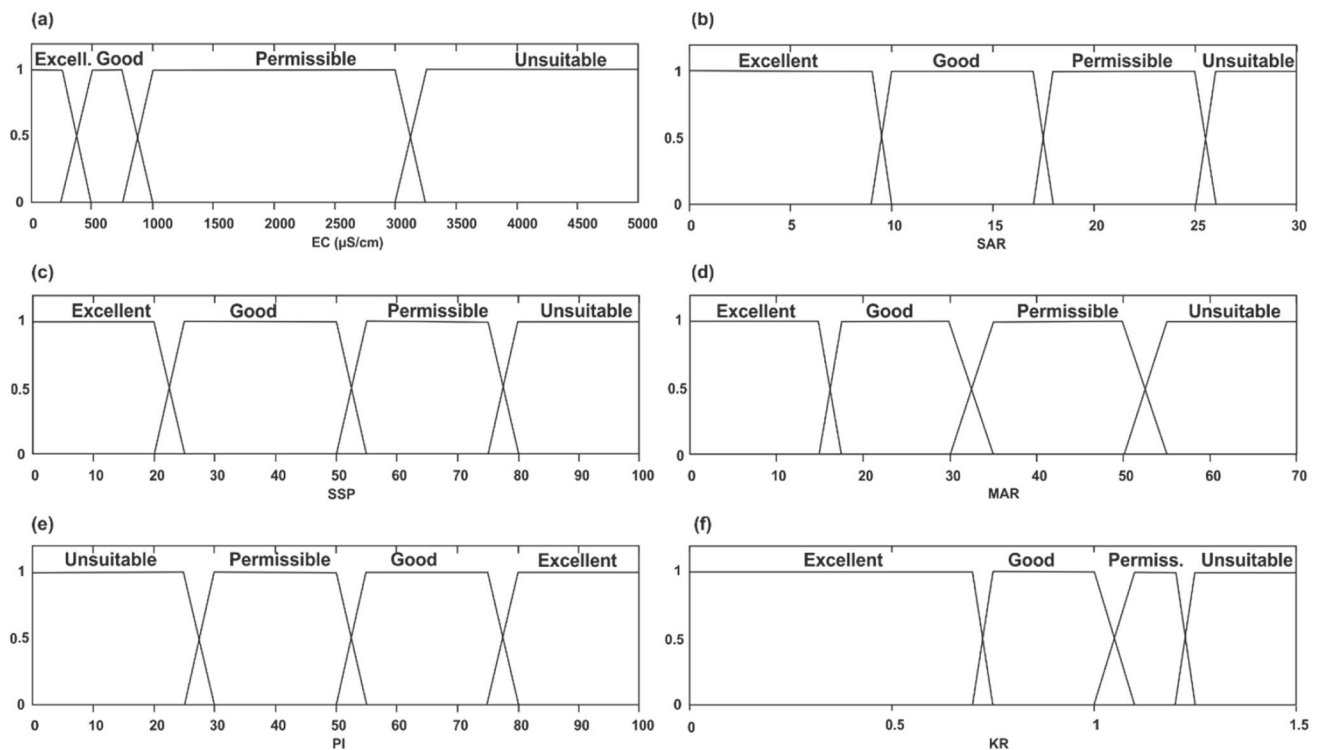


Fig. 9 Inputs membership functions

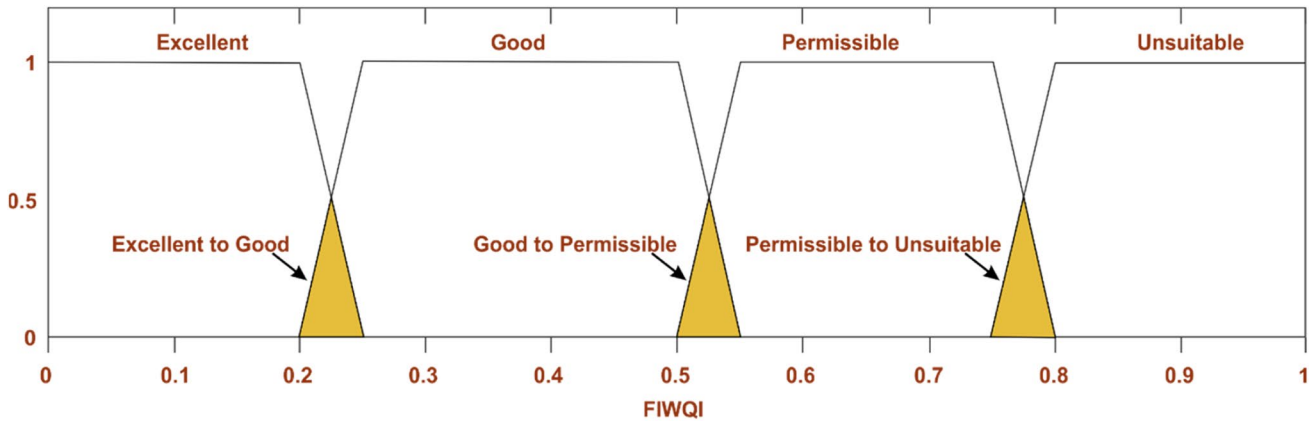
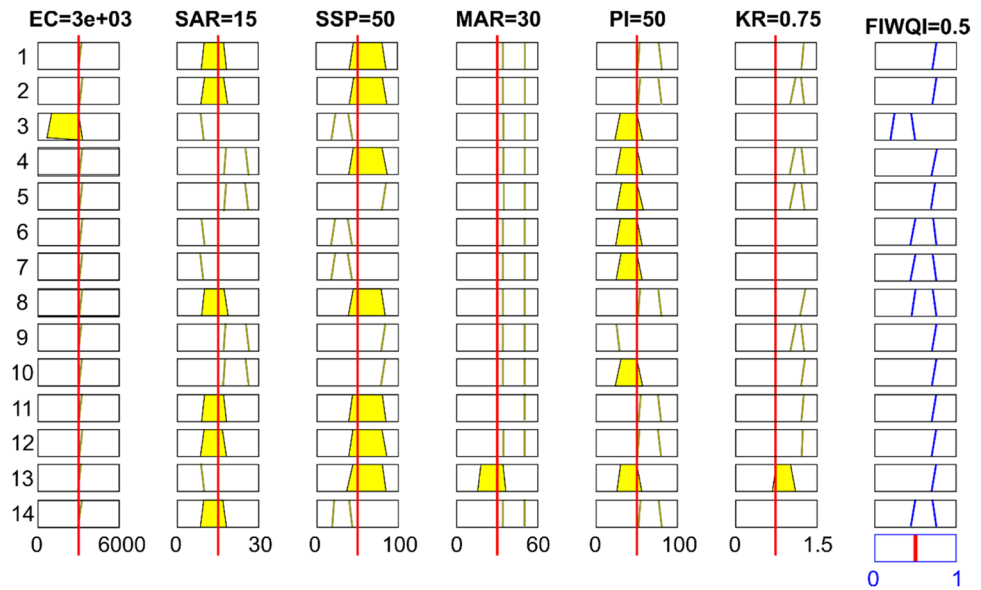


Fig. 10 FIWQI classification of groundwater from Menzel Habib aquifer system

Fig. 11 Sample of rules created in fuzzy toolbox in MATLAB software



toolbox of MATLAB software was used to create the appropriate rules for groundwater classification where some rules are shown in Fig. 11.

Therefore, fuzzy logic method has clearly modified groundwater classification by creating three new water quality groups, excellent to good, good to permissible, and permissible to unsuitable (Table 2), compared with the Richards diagram classification (excellent, good, permissible, and unsuitable; Fig. 8). Consequently, from Menzel Habib aquifer system, 3% of groundwater samples are characterized by “good quality,” 3% of “good to permissible quality,” and 33% of “permissible quality” for irrigation purposes. About, 36% of groundwater sampled points are considered as “permissible to unsuitable quality” for irrigation; however, 25% are classified as “unsuitable quality” for irrigation purposes. The created fuzzy index shows superiority and improvement over the classification given by the diagram of Richards. This is notably relevant in groundwater samples

Table 2 FIWQI vs. USSL classification

Fuzzy classification		USSL classification		
FIWQI	Class	SSP	EC (μS/cm)	Class
<0.2	Excellent	0–50	0–750	Excellent
0.2–0.25	Excellent to good			
0.25–0.45	Good	50–65	750–2000	Good
0.45–0.5	Good to permissible			
0.5–0.7	Permissible	65–80	2000–3000	Doubtful
0.7–0.75	Permissible to unsuitable			
>0.75	Unsuitable	>80	>3000	Unsuitable

characterized by similar quality, reflecting and promoting a more robust decision, precisely on groundwater samples with values located between two different groups. Overall, using Richards diagram classification, making the decision

was taken according to crisp values, while the FIS showed flexible limits based on linguistic terms related to groundwater quality threshold values that is located between two different groups. This methodology will allow for more reliable and consistent information concerning groundwater quality for irrigation supplies. The fuzzy logic method is, then, greater than other indices as discussed by Priya (2013), Agoubi et al. (2016) and Mohamed et al. (2019) where it has the ability to reflect the state of groundwater quality and could be a useful approach for groundwater quality modeling as it is an alternate approach to problems where the limits are diffuse or imprecise.

Conclusion

Using different traditional water quality indices (SAR, SSP, KR, PI, and MAR) and Richard's diagram, the fuzzy logic techniques have been applied to assess groundwater quality for irrigation purposes. Based on hydrochemical analysis results, different sources of salinization were detected, notably, the dissolution of evaporites, the precipitation of carbonates, the inverse cationic exchange, and the inverse cationic exchange. Therefore, groundwater samples were classified using the traditional indices and the Richards diagram where almost of them are characterized by a low suitability for irrigation use.

Then, a Fuzzy Irrigation Water Quality Index (FIWQI) is developed basing on the combination of conventional water quality indices in a global one. This index allows to classify the groundwater samples into seven categories: 3% of groundwater samples were classified as "good," 3% were categorized as being "good to permissible," 33% were considered "permissible," 36% were classified as being "permissible to unsuitable," and 25% were classified as being "unsuitable" for irrigation purposes. The proposed model was validated with satisfactory results on groundwater samples for Menzel Habib area. The resulted FIWQI is more adequate to Menzel Habib aquifer system than Richard's diagram, and the conventional water quality indices where the creation of new groundwater quality classes, classified as excellent to good, good to permissible, and permissible to unsuitable, will be more relevant on the groundwater classification for irrigation purposes by avoiding the uncertainties and imprecision associated in decision-making processes.

Depending on these obtained results where the quality of almost groundwater samples is unsuitable for the soil and, thus, for a sustainable crop production, an appropriate remediation is required in Menzel Habib area, notably, by the treatment of groundwater resources before using for irrigation or the use of specific crop tolerant to the water high salinity. These recommendations will be useful in this local area and will benefit other regions that have similar issues.

Acknowledgements The authors are grateful to the staff of Applied Hydrosciences Laboratory for their effort and support during laboratory analysis. This research was developed under the FCT–Fundação para a Ciência e a Tecnologia, I.P. program, through the project's reference UIDB/04683/2020 and UIDP/04683/2020.

Author contribution Oussama Dhaoui contributed to the writing—original draft preparation, investigation, and methodology. Writing—reviewing and editing were performed by IMHR Antunes and Belgacem Agoubi. Modeling was performed by Lotfi Tlig. Adel Kharroubi contributed to the supervision and validation.

Data availability Geochemical data were generated at the Applied Hydrosciences Laboratory, Higher Institute of Water Sciences and Techniques of Gabès, Tunisia. Derived data supporting the findings of this study are available from the corresponding author on request.

Declarations

Ethical approval Hereby, all authors consciously assure that for the manuscript "Groundwater quality for irrigation in an arid region—application of fuzzy logic techniques" the following is fulfilled:

- (1) This material is the authors' own original work, which has not been previously published elsewhere.
- (2) The paper is not currently being considered for publication elsewhere.
- (3) The paper reflects the authors' own research and analysis in a truthful and complete manner.
- (4) The paper properly credits the meaningful contributions of co-authors and co-researchers.
- (5) The results are appropriately placed in the context of prior and existing research.
- (6) All sources used are properly disclosed.
- (7) All authors have been personally and actively involved in substantial work leading to the paper and will take public responsibility for its content.

Consent to participate Not applicable.

Consent for publication All authors, mentioned above, give our consent for the publication of identifiable details, which can include photographs and/or videos and/or case history and/or details within the text ("Material") to be published in the above Journal and Article.

Competing interests The authors declare no competing interests.

References

- Abd El-Aziz SH (2017) Evaluation of groundwater quality for drinking and irrigation purposes in the north-western area of Libya (Aligeelat). *Environ Earth Sci* 76:147. <https://doi.org/10.1007/s12665-017-6421-3>
- Abid K, Trabelsi R, Zouari K, Abidi B (2009) Caractérisation hydrogéochimique de la nappe du Continental Intercalaire (sud tunisien) / Hydrogeochemical characterization of the Continental Intercalaire aquifer (southern Tunisia). *Hydrol Sci J* 54(3):526–537. <https://doi.org/10.1623/hysj.54.3.526>
- Abul Q, Singh SP, Chandrashekar AK (2022) Geochemical and isotope tracing of groundwater salinity in the coastal Gujarat alluvial plain, India. *J Contaminant Hydrol* 248:104000. <https://doi.org/10.1016/j.jconhyd.2022.104000>

- Agoubi B, Dabbaghi R, Kharroubi A (2018) A Mamdani adaptive neural fuzzy inference system for improvement of groundwater vulnerability. *Groundwater J* 56(6):978–985. <https://doi.org/10.1111/gwat.12634>
- Agoubi B, Kharroubi A, Abida H (2012) Saltwater intrusion modeling in Jorf coastal aquifer, South eastern Tunisia: geochemical, geoelectrical and geostatistical application. *Hydrol Process* 27:1191–1199. <https://doi.org/10.1002/hyp.9207>
- Agoubi B, Souid F, Kharroubi A, Abdallaoui A (2016) Assessment of hot groundwater in an arid area in Tunisia using geochemical and fuzzy logic approaches. *Environ Earth Sci* 75:1497. <https://doi.org/10.1007/s12665-016-6296-8>
- Ahmad I, Dar MA, Teka AH, Teshome M, Andualem TG, Teshome A, Shafi T (2020) GIS and fuzzy logic techniques-based demarcation of groundwater potential zones: a case study from Jemma River basin, Ethiopia. *J African Earth Sci* 169:103860. <https://doi.org/10.1016/j.jafrearsci.2020.103860>
- Ahmed MA, Abdel Samie SG, Badawy HA (2013) Factors controlling mechanisms of groundwater salinization and hydrogeochemical processes in the Quaternary aquifer of the Eastern Nile Delta. *Egypt Environ Earth Sci* 68:369–394. <https://doi.org/10.1007/s12665-012-1744-6>
- Alabjah B, Amraoui F, Chibout M, Slimani M (2018) Assessment of saltwater contamination extent in the coastal aquifers of Chaouia (Morocco) using the electric recognition. *J Hydrol* 566:363–376
- Aladejana JA, Kalin RM, Sentenac P, Hassan I (2021) Groundwater quality index as a hydrochemical tool for monitoring saltwater intrusion into coastal freshwater aquifer of Eastern Dahomey Basin, Southwestern Nigeria. *Groundw Sustain Dev* 13:100568. <https://doi.org/10.1016/j.gsd.2021.100568>
- Alavi N, Nozari V, Mazloumzadeh SM, Nezamabadi-pour H (2010) Irrigation water quality evaluation using adaptive network-based fuzzy inference system. *Paddy Water Environ* 8:259–266. <https://doi.org/10.1007/s10333-010-0206-6>
- Aliyu T, Balogun O, Namani C, Olatinwo L, Aliyu A (2017) Assessment of the presence of metals and quality of water used for irrigation in Kwara State, Nigeria. *Pollution* 3(3):461–470
- Al Maliki AA, Abbass ZD, Hussain HM, Al-Ansari N (2020) Assessment of the groundwater suitability for irrigation near Al Kufa City and preparing the final water quality maps using spatial distribution tools. *Environ Earth Sci* 79:330. <https://doi.org/10.1007/s12665-020-09060-w>
- Al Mamun MA, Howladar MF, Sohail MA (2019) Assessment of surface water quality using Fuzzy Analytic Hierarchy Process (FAHP): a case study of Piyaan River's sand and gravel quarry mining area in Jaflong, Sylhet. *Groundw Sustain Dev* 9:100208. <https://doi.org/10.1016/j.gsd.2019.03.002>
- Amrani S, Hinaje S, El Fartati M, Gharmane Y, Yaagoub D (2022) Assessment of groundwater quality for drinking and irrigation in the Timahdite-Almis Guigou area (Middle Atlas, Morocco). *Appl Water Sci* 12:82. <https://doi.org/10.1007/s13201-022-01609-3>
- Arabameri A, Pal SC, Rezaie F, Nalivan OA, Chowdhuri I, Saha A, Lee S, Moayedi H (2022) Modeling groundwater potential using novel GIS-based machine-learning ensemble techniques. *J Hydrol: Reg Stud* 36:100848. <https://doi.org/10.1016/j.ejrh.2021.100848>
- Arasteh MA, Farjami Y (2021) Supporting sustainable rural groundwater demand management with fuzzy decision analysis: a case study in Iran. *Util Policy* 70:101215. <https://doi.org/10.1016/j.jup.2021.101215>
- Argamasilla M, Barberá JA, Andreo B (2017) Factors controlling groundwater salinization and hydrogeochemical processes in coastal aquifers from southern Spain. *Sci Total Environ* 580:50–68. <https://doi.org/10.1016/j.scitotenv.2016.11.173>
- Ashraf S, Ali M, Shrestha S, Hafeez MA, Moiz A, Sheikh ZA (2022) Impacts of climate and land-use change on groundwater recharge in the semi-arid lower Ravi River basin, Pakistan. *Groundw Sustain Dev* 17:100743. <https://doi.org/10.1016/j.gsd.2022.100743>
- Ayyandurai R, Venkateswaran S, Karunanidhi D (2022) Hydrogeochemical assessment of groundwater quality and suitability for irrigation in the coastal part of Cuddalore district, Tamil Nadu, India. *Mar Pollut Bull* 174:113258. <https://doi.org/10.1016/j.marpolbul.2021.113258>
- Ayers R, Westcot D (1994) Food, Agriculture Organization of the United Nations (FAO), Water quality for agriculture, irrigation and drainage, Rome: Paper No. 29. Rev. 1, M-56. ISBN 92–5–102263–1
- Baghel A, Sharma T (2013) Survey on fuzzy expert system. *Int J Emerg Technol Adv Eng* 3(12):230–233
- Bahir M, Ouhamdouch S, Carreira PM (2018) Geochemical and isotopic approach to decrypt the groundwater salinization origin of coastal aquifers from semi-arid areas (Essaouira basin, Western Morocco). *Environ Earth Sci* 77:485. <https://doi.org/10.1007/s12665-018-7663-4>
- Bedi S, Samal A, Ray C, Snow D (2020) Comparative evaluation of machine learning models for groundwater quality assessment. *Environ Monit Assess* 192:776. <https://doi.org/10.1007/s10661-020-08695-3>
- Ben Alaya M, Saidi S, Zemni T, Zargouni F (2013) Suitability assessment of deep groundwater for drinking and irrigation use in the Djeffara aquifers (Northern Gabes, south-eastern Tunisia). *Environ Earth Sci* 71:3387–3421. <https://doi.org/10.1007/s12665-013-2729-9>
- Ben Cheikh N (2013) Etude des relations hydrodynamiques entre la nappe profonde de Sfax et les systèmes aquifères méridionaux (Menzel Habib et Gabès Nord): origines et mécanismes de minéralisation des eaux souterraines. Unpublished PhD. Thesis, University of Sfax, Tunisia, pp 161
- Bera A, Mukhopadhyay BP, Chowdhury P, Ghosh A, Biswas S (2021) Groundwater vulnerability assessment using GIS-based DRASTIC model in Nangasai River Basin, India with special emphasis on agricultural contamination. *Ecotoxicol Environ Saf* 214:112085. <https://doi.org/10.1016/j.ecoenv.2021.112085>
- Beyene G, Aberra D, Fufa F (2019) Evaluation of the suitability of groundwater for drinking and irrigation purposes in Jimma Zone of Oromia, Ethiopia. *Groundw Sustain Dev* 9:100216. <https://doi.org/10.1016/j.gsd.2019.100216>
- Boufekane A, Saighi O (2019) Assessing groundwater quality for irrigation using geostatistical method – case of wadi Nil Plain (North-East Algeria). *Groundw Sustain Dev* 8:179–186. <https://doi.org/10.1016/j.gsd.2018.11.003>
- Bucton BGB, Shrestha S, Saurav KC, Mohanasundaram S, Virdis SGP, Chaowiat W (2022) Impacts of climate and land use change on groundwater recharge under shared socioeconomic pathways: a case of Siem Reap, Cambodia. *Environ Res* 211:113070. <https://doi.org/10.1016/j.envres.2022.113070>
- Burri NM, Weatherl R, Moeck C, Schirmer M (2019) A review of threats to groundwater quality in the anthropocene. *Sci Total Environ* 684:136–154. <https://doi.org/10.1016/j.scitotenv.2019.05.236>
- Castillo O, Melin P (2008) Type-2 fuzzy logic: theory and applications. Springer-Verlag, Heidelberg, Germany
- Chi G, Su X, Lyu H, Li H, Xu G, Zhang Y (2022) *Environ Res* 212 Part A 113104. <https://doi.org/10.1016/j.envres.2022.113104>
- Cho JH, Lee JH (2020) Fuzzy optimization model for waste load allocation in a river with total maximum daily load (TMDL) planning. *Water* 12(9):2618. <https://doi.org/10.3390/w12092618>
- D'Alessandro W, Bellomo S, Brusca L, Kyriakopoulos K, Calabrese S, Daskalopoulou K (2017) The impact of natural and anthropogenic factors on groundwater quality in an active volcanic/geothermal system under semi-arid climatic conditions: the

- case study of Methana peninsula (Greece). *J Geochem Explor* 175:110–119. <https://doi.org/10.1016/j.gexplo.2017.01.003>
- Das B, Pal SC (2020a) Assessment of groundwater vulnerability to over-exploitation using MCDA, AHP, fuzzy logic and novel ensemble models: a case study of Goghat-I and II blocks of West Bengal, India. *Environ Earth Sci* 79:104. <https://doi.org/10.1007/s12665-020-8843-6>
- Das B, Pal SC (2020b) Irrigation practices causing vulnerability of groundwater resources in water scarce Goghat-I and II blocks of Hugli District using MCDA, AHP, fuzzy logic and novel ensemble models. *Adv Space Res* 65(12):2733–2748. <https://doi.org/10.1016/j.asr.2020.03.027>
- Dhaoui O, Antunes IMHR, Agoubi B, Kharroubi A (2021) Geochemical processes of groundwater salinization in an arid area, southeastern Tunisia. *Arab J Geosci* 14:1721. <https://doi.org/10.1007/s12517-021-08155-3>
- Dhaoui O, Antunes IMHR, Agoubi B, Kharroubi A (2022) Integration of water contamination indicators and vulnerability indices on groundwater management in Menzel Habib area, south-eastern Tunisia. *Environ Res* 205:112491. <https://doi.org/10.1016/j.envres.2021.112491>
- Duhalde DJ, Arumí JL, Oyarzún RA, Rivera DA (2018) Fuzzy-based assessment of groundwater intrinsic vulnerability of a volcanic aquifer in the Chilean Andean Valley. *Environ Monit Assess* 190:390. <https://doi.org/10.1007/s10661-018-6758-4>
- El Bilali A, Taleb A (2020) Prediction of irrigation water quality parameters using machine learning models in a semi-arid environment. *J Saudi Soc Agric Sci* 19(7):439–451. <https://doi.org/10.1016/j.jssas.2020.08.001>
- Elmeknassi M, Bouchaou L, El Mandour A, Elgettafi M, Himi M, Casas A (2022) Multiple stable isotopes and geochemical approaches to elucidate groundwater salinity and contamination in the critical coastal zone: a case from the Bou-areg and Gareb aquifers (North-Eastern Morocco). *Environ Pollut* 300:118942. <https://doi.org/10.1016/j.envpol.2022.118942>
- FAO (Food and Agriculture Organization of the United Nations) (1997) *La petite irrigation dans les zones arides: Principes et options*. FAO, Rome
- FAO (Food and Agriculture Organization of the United Nations) (2008) *Irrigation in the Middle East Region in Figures*. FAO, Rome
- Farid I, Trabelsi R, Zouari K, Abid K, Ayachi M (2012) Hydrogeochemical processes affecting groundwater in an irrigated land in Central Tunisia. *Environ Earth Sci* 68:1215–1231. <https://doi.org/10.1007/s12665-012-1788-7>
- Gacôgne L (1997) *Eléments de logique floue*. Hermes Sciences Publication
- Gemitzi A, Ajami H, Richnow HH (2017) Developing empirical monthly groundwater recharge equations based on modeling and remote sensing data – modeling future groundwater recharge to predict potential climate change impacts. *J Hydrol* 546:1–13. <https://doi.org/10.1016/j.jhydrol.2017.01.005>
- Ghazaryan K, Movsesyan HS, Gevorgyan A, Minkina T, Sushkova SN, Rajput VD, Mandzhieva SS (2020) Comparative hydrochemical assessment of groundwater quality from different aquifers for irrigation purposes using IWQI: a case-study from Masis province in Armenia. *Groundw Sustain Dev* 11:100459. <https://doi.org/10.1016/j.gsd.2020.100459>
- Ghimire U, Shrestha S, Neupane S, Mohanasundaram S, Lorphensri O (2021) Climate and land-use change impacts on spatiotemporal variations in groundwater recharge: a case study of the Bangkok Area, Thailand. *Sci Total Environ* 792:148370. <https://doi.org/10.1016/j.scitotenv.2021.148370>
- Goswami R, Neog N, Thakur R (2022) Hydrogeochemical analysis of groundwater quality for drinking and irrigation with elevated arsenic and potential impact on agro-ecosystem in the upper Brahmaputra plain. *Environ Sci Pollut Res, India*. <https://doi.org/10.1007/s11356-022-20600-8>
- Hu KX, Awangea JL, Kuhna M (2019) Saleema A (2019) Spatio-temporal groundwater variations associated with climatic and anthropogenic impacts in South-West Western Australia. *J Sci Total Environ* 696:133599. <https://doi.org/10.1016/j.scitotenv.2019.133599>
- Icaga Y (2007) Fuzzy evaluation of water quality classification. *Ecol Ind* 7:710–718
- Isawi H, El-Sayed MH, Eissa M, Shouakar-Stash O, Shawky H, Abdel Mottaleb MS (2016) Integrated geochemistry, isotopes, and geostatistical techniques to investigate groundwater sources and salinization origin in the Sharm EL-Shiekh Area, South Sinia, Egypt. *J Water Air Soil Pollut* 227:151. <https://doi.org/10.1007/s11270-016-2848-5>
- Jafari SM, Nikoo MR (2019) Developing a fuzzy optimization model for groundwater risk assessment based on improved DRASTIC method. *Environ Earth Sci* 78:109. <https://doi.org/10.1007/s12665-019-8090-x>
- Jahin HS, Abuzaid AS, Abdellatif AD (2020) Using multivariate analysis to develop irrigation water quality index for surface water in Kafr El-Sheikh Governorate, Egypt. *Environ Technol Innov* 17. <https://doi.org/10.1016/j.eti.2019.100532>
- Jaiswal S, Ballal MS (2020) Fuzzy inference based irrigation controller for agricultural demand side management. *J Comput Electron Agric* 175:105537. <https://doi.org/10.1016/j.compag.2020.105537>
- Jaydhar AS, Pal SC, Saha A, Islam ARMT, Ruidas D (2022) Hydrogeochemical evaluation and corresponding health risk from elevated arsenic and fluoride contamination in recurrent coastal multi-aquifers of eastern India. *J Clean Prod* 369:133150. <https://doi.org/10.1016/j.jclepro.2022.133150>
- Jha MK, Shekhar A, Jenifer MA (2020) Assessing groundwater quality for drinking water supply using hybrid fuzzy-GIS-based water quality index. *Water Res* 179:115867. <https://doi.org/10.1016/j.watres.2020.115867>
- Kammoun S, Trabelsi R, Re V, Zouari K, Henchiri J (2018) Groundwater quality assessment in semi-arid regions using integrated approaches: the case of Grombalia aquifer (NE Tunisia). *Environ Monit Assess* 190:87. <https://doi.org/10.1007/s10661-018-6469-x>
- Karant K (1987) *Ground water assessment, development and management*. Tata McGraw Hill Publishing Company Ltd., New Delhi, p 720
- Kahsay KD, Pingale SM, Hatiye SD (2018) Impact of climate change on groundwater recharge and base flow in the sub-catchment of Tekeze basin, Ethiopia. *Groundw Sustain Dev* 6:121–133. <https://doi.org/10.1016/j.gsd.2017.12.002>
- Kavurmacı M, Karakuş CB (2020) Evaluation of irrigation water quality by data envelopment analysis and analytic hierarchy process-based water quality indices: the case of Aksaray City, Turkey. *Water Air Soil Pollut* 231:55. <https://doi.org/10.1007/s11270-020-4427-z>
- Kawo NS, Karuppannan S (2018) Groundwater quality assessment using water quality index and GIS technique in Modjo River Basin, central Ethiopia. *J African Earth Sci* 147:300–311. <https://doi.org/10.1016/j.jafrearsci.2018.06.034>
- Keesari T, Ramakumar KL, Chidambaram S, Pethperumal S, Thilagavathi R (2016) Understanding the hydrochemical behavior of groundwater and its suitability for drinking and agricultural purposes in Pondicherry area, South India – a step towards sustainable development. *Groundw Sustain Dev* 2–3:143–153. <https://doi.org/10.1016/j.gsd.2016.08.001>
- Kelly WP (1963) Use of saline irrigation water. *Soil Sci* 95:355–391
- Khan A, Umar R, Khan HH (2015) Hydrochemical characterization of groundwater in lower Kali watershed, Western Uttar Pradesh.

- J Geol Soc India 86(2):195–210. <https://doi.org/10.1007/s12594-015-0299-z>
- Kharroubi A, Telahigue F, Agoubi B, Azri C, Bourri S (2012) Hydrochemical and statistical studies of the groundwater salinization in Mediterranean arid zones: case of the Jerba coastal aquifer in southeast Tunisia. *Environ Earth Sci* 67(7):2089–2100. <https://doi.org/10.1007/s12665-012-1648-5>
- Khashei-Siuki A, Sarbazi M (2015) Evaluation of ANFIS, ANN, and geostatistical models to spatial distribution of groundwater quality (case study: Mashhad plain in Iran). *Arab J Geosci* 8:903–912. <https://doi.org/10.1007/s12517-013-1179-8>
- Khmila K, Trabelsi R, Zouari K, Kumar US (2021) Application of geochemical and isotopic tracers for the evaluation of groundwater quality in the irrigated area of the Sbiba plain (Central West Tunisia). *Agr Ecosyst Environ* 313:107298. <https://doi.org/10.1016/j.agee.2021.107298>
- Kopittke PM, So HB, Menzies NW (2006) Effect of ionic strength and clay mineralogy on Na–Ca exchange and the SAR–ESP relationship. *Eur J Soil Sci* 57:626–633. <https://doi.org/10.1111/j.1365-2389.2005.00753.x>
- Kord M, Arshadi B (2022) Applying the water quality index with fuzzy logic as a way to analyze multiple long-term groundwater quality data: a case study of Dehgholān plain. *Arab J Geosci* 15:253. <https://doi.org/10.1007/s12517-022-09492-7>
- Li Z, Zhou B, Teng D, Yang W, Qiu D (2018) Comprehensive evaluation method of groundwater environment in a mining area based on fuzzy set theory. *Geosyst Eng* 21(2):103–112. <https://doi.org/10.1080/12269328.2017.1386594>
- Lu H, Ma X (2020) Hybrid decision tree-based machine learning models for short-term water quality prediction. *Chemosphere* 249:126169. <https://doi.org/10.1016/j.chemosphere.2020.126169>
- Malik S, Pal SC, Arabameri A, Chowdhuri I, Saha A, Chakraborty R, Roy P, Das B (2021) GIS-based statistical model for the prediction of flood hazard susceptibility. *Environ Dev Sustain* 23:16713–16743. <https://doi.org/10.1007/s10668-021-01377-1>
- McKone TE, Deshpande AW (2005) Can fuzzy logic bring complex environmental problems into focus? *Environ Sci Technol* 39(2):42A–47A. <https://doi.org/10.1021/es053163z>
- Mejri S, Chekirbene A, Tsujimura M, Boughdiri M, Mlayah A (2018) Tracing groundwater salinization processes in an inland aquifer: a hydrogeochemical and isotopic approach in Sminja aquifer (Zaghouan, northeast of Tunisia). *J African Earth Sci* 147:511–522. <https://doi.org/10.1016/j.jafrearsci.2018.07.009>
- Mensah JK, Ofosu EA, Yidana SM, Akpoti K, Kabo-bah AT (2022) Integrated modeling of hydrological processes and groundwater recharge based on land use land cover, and climate changes: a systematic review. *Environ Adv* 8:100224. <https://doi.org/10.1016/j.envadv.2022.100224>
- Meyers G, Kapelan Z, Keedwell E (2017) Short-term forecasting of turbidity in trunk main networks. *Water Res* 124:67–76. <https://doi.org/10.1016/j.watres.2017.07.035>
- Mohamed AK, Liu D, Song K, Mohamed MA, Aldaw E, Elubid BA (2019) Hydrochemical analysis and fuzzy logic method for evaluation of groundwater quality in the North Chengdu Plain, China. *Int J Environ Res Public Health* 16(3):302. <https://doi.org/10.3390/ijerph16030302>
- Moharir K, Pande C, Singh S, Choudhari P, Kishan R, Jeyakumar L (2019) Spatial interpolation approach-based appraisal of groundwater quality of arid regions. *J Water Supply Res Technol AQUA* 68(6):431–447. <https://doi.org/10.2166/aqua.2019.026>
- Mujumdar PP, Sasikumar K (2002) A fuzzy risk approach for seasonal water quality management of a river system. *Water Resour Res* 38(1):5–1. <https://doi.org/10.1029/2000WR000126>
- Mukherjee I, Singh UK, Chakma S (2022) Evaluation of groundwater quality for irrigation water supply using multi-criteria decision-making techniques and GIS in an agro-economic tract of Lower Ganga basin, India. *J Environ Manag* 309:114691. <https://doi.org/10.1016/j.jenvman.2022.114691>
- Nadiri AA, Khatibi R, Vahedi F, Naderi K (2019) Spatial prediction of groundwater level using models based on fuzzy logic and geostatistical methods. *GIS and Geostatistical Techniques Groundwater Sci* 79–90. <https://doi.org/10.1016/B978-0-12-815413-7.00007-9>
- Nadiri AA, Sedghi Z, Khatibi R, Gharekhani M (2017) Mapping vulnerability of multiple aquifers using multiple models and fuzzy logic to objectively derive model structures. *Sci Total Environ* 593–594:75–90. <https://doi.org/10.1016/j.scitotenv.2017.03.109>
- Nagarajah S, Emerson NB, Abeykoon V, Yogalingam S (1988) Water quality of some wells in Jaffna and Killinochchi with special reference to nitrate pollution. *Trop Agric* 44:61–73
- Naik MR, Mahanty B, Sahoo SK, Jha VN, Sahoo NK (2022) Assessment of groundwater geochemistry using multivariate water quality index and potential health risk in industrial belt of central Odisha, India. *Environ Pollut* 303:119161. <https://doi.org/10.1016/j.envpol.2022.119161>
- Nyembo LO, Larbi I, Mwabumba M, Selemani JR, Dotse SQ, Limantol AM, Bessah E (2021) Impact of climate change on groundwater recharge in the lake Manyara catchment, Tanzania. *Sci African* 15:e01072. <https://doi.org/10.1016/j.sciaf.2021.e01072>
- Olofinlade WS, Daramola SO, Olabode OF (2018) Hydrochemical and statistical modeling of groundwater quality in two contrasting geological terrains of southwestern Nigeria. *Model Earth Syst Environ* 4:1405–1421. <https://doi.org/10.1007/s40808-018-0486-1>
- Osiakwan GM, Gibrilla A, Kabo-Bah AT, Appiah-Adjei EK, Anornu G (2022) Delineation of groundwater potential zones in the Central Region of Ghana using GIS and fuzzy analytic hierarchy process. *Model Earth Syst Environ*. <https://doi.org/10.1007/s40808-022-01380-z>
- Ostovari Y, Beigi-Harchegani H, Asgari K (2014) A fuzzy logic approach for assessment and mapping of groundwater irrigation quality: a case study of Marvdasht aquifer, Iran. *J Arch Agronomy Soil Sci* 61(5):711–723. <https://doi.org/10.1080/03650340.2014.946020>
- Ouhamdouch S, Bahir M, Ouazar D, Zouari K (2022) Isotopic signature of groundwater and climate change within a semi-arid environment. *Groundw Sustain Dev* 17:100729. <https://doi.org/10.1016/j.gsd.2022.100729>
- Pal SC, Ruidas D, Saha A, Islam ARMT, Chowdhuri I (2022) Application of novel data-mining technique based nitrate concentration susceptibility prediction approach for coastal aquifers in India. *J Clean Prod* 346:131205. <https://doi.org/10.1016/j.jclepro.2022.131205>
- Patel P, Raju NJ, Reddy BCSR, Suresh U, Gossel W, Wycisk P (2016) Geochemical processes and multivariate statistical analysis for the assessment of groundwater quality in the Swarnamukhi River basin, Andhra Pradesh, India. *Environ Earth Sci* 75:611. <https://doi.org/10.1007/s12665-015-5108-x>
- Pathak DR, Bhandary NP (2020) (2020) Evaluation of groundwater vulnerability to nitrate in shallow aquifer using multi-layer fuzzy inference system within GIS environment. *Groundw Sustain Dev* 11:100470. <https://doi.org/10.1016/j.gsd.2020.100470>
- Pazand K, Javanshir A (2014) Geochemistry and water quality assessment of groundwater around Mohammad Abad Area, Bam District, SE Iran. *Water Qual Expo Health* 6:225–231. <https://doi.org/10.1007/s12403-014-0131-9>
- Pham QB, Kumar M, Di Nunno F, Elbeltagi A, Granata F, Islam ARMT, Talukdar S, Nguyen XC, Ahmed AN, Anh DT (2022) Groundwater level prediction using machine learning algorithms in a drought-prone area. *Neural Comput Appl*. <https://doi.org/10.1007/s00521-022-07009-7>
- Prasad M, Sunitha V, Sudharsan YR, Suvarna B, Muralidha BR, Ramakrishna MR (2019) Data on water quality index development

- for groundwater quality assessment from Obulavaripalli Mandal, YSR district, Andhra Pradesh India. Data in Brief 24:10384610. <https://doi.org/10.1016/j.dib.2019.103846>
- Priya KL (2013) A fuzzy logic approach for irrigation water quality assessment: a case study of Karunya Watershed, India. *J Hydrogeol Hydrol Eng* 2:1. <https://doi.org/10.4172/2325-9647.1000104>
- Ragunath HM (1987) *Groundwater*. Wiley Eastern, New Delhi, p 563
- Rajae T, Ebrahimi H, Nourani V (2019) A review of the artificial intelligence methods in groundwater level modeling. *J Hydrol* 572:336–351. <https://doi.org/10.1016/j.jhydrol.2018.12.037>
- Raman BV, Reinier B, Mohan S (2009) Fuzzy logic water quality index and importance of water quality parameters. *Air Soil Water Res* 2:51–59. <https://doi.org/10.4137/ASWR.S2156>
- Rezaei F, Safavi HR, Ahmadi A (2013) Groundwater vulnerability assessment using fuzzy logic: a case study in the Zayandehrood aquifers, Iran. *Environ Manag* 51:267–277. <https://doi.org/10.1007/s00267-012-9960-0>
- Richards LA (1954) Diagnostics and improvement of saline and alkaline soils. U.S. Dept. of Agriculture hand book no. 60. U.S. Salinity Laboratory, Washington, DC
- Ross TJ (2005) *Fuzzy logic with engineering applications*. Wiley, New York
- Rostammiri A, Malmasi S, Yosefvand F, Hoseini SA, Etminan A (2022) Presenting the spatial–temporal model for assessing and predicting qualitative changes of the groundwater resources in Shahriar, Tehran Iran. *Environ Monit Assess* 194:31. <https://doi.org/10.1007/s10661-021-09512-1>
- Ruidas D, Pal SC, Islam ARMT, Saha A (2022) Hydrogeochemical evaluation of groundwater aquifers and associated health hazard risk mapping using ensemble data driven model in a water scarce Plateau region of Eastern India. *Expos Health*. <https://doi.org/10.1007/s12403-022-00480-6>
- Ruidas D, Pal SC, Islam ARMT, Saha A (2021) Characterization of groundwater potential zones in water-scarce hardrock regions using data driven model. *Environ Earth Sci* 80:809. <https://doi.org/10.1007/s12665-021-10116-8>
- Safiur Rahman M, Saha N, Islam ARMT, Shen S, Bodrud-Doza Md (2017) Evaluation of water quality for sustainable agriculture in Bangladesh. *J Water Air Soil Pollut* 228:385. <https://doi.org/10.1007/s11270-017-3543-x>
- Schwarzenbach RP, Egli P, Hofstetter TB, von Gunten U, Wehrli B (2010) *Annu Rev Environ Resour* 35:109–136. <https://doi.org/10.1146/annurev-environ-100809-125342>
- Sehlaoui H, Hassikou R, Moussadek R, Zouhari A, Douaik A, Iach H, Ghanimi A, Dakak H (2020) Evaluation of water quality for agricultural suitability in the Benslimane region, Morocco. *Environ Monit Assess* 192:587. <https://doi.org/10.1007/s10661-020-08530-9>
- Shwetank S, Chaudhary JK (2019) Estimation of groundwater contamination using fuzzy logic: a case study of Haridwar, India. *J Groundw Sustain Dev* 8:644–653. <https://doi.org/10.1016/j.gsd.2019.03.004>
- Solgi E, Jalili M (2021) Zoning and human health risk assessment of arsenic and nitrate contamination in groundwater of agricultural areas of the twenty-two village with geostatistics (Case study: Chahardoli Plain of Qorveh, Kurdistan Province, Iran). *Agric Water Manag* 255:107023. <https://doi.org/10.1016/j.agwat.2021.107023>
- Steube C, Richter S, Griebler C (2009) First attempts towards an integrative concept for the ecological assessment of groundwater ecosystems. *Hydrogeol J* 17:23–35. <https://doi.org/10.1007/s10040-008-0346-6>
- Subba Rao N, Surya Rao P, Venktram Reddy G, Nagamani M, Vidyasagar G, Satyanarayana NLVV (2012) Chemical characteristics of groundwater and assessment of groundwater quality in Varaha River Basin, Visakhapatnam District, Andhra Pradesh, India. *Environ Monit Assess* 184:5189–5214. <https://doi.org/10.1007/s10661-011-2333-y>
- Subba Rao N, Dinakar A, Sravanthi M, Karuna Kumari B (2021) Geochemical characteristics and quality of groundwater evaluation for drinking, irrigation, and industrial purposes from a part of hard rock aquifer of South India. *Environ Sci Pollut Res* 28:31941–31961. <https://doi.org/10.1007/s11356-021-12404-z>
- Sunkari ED, Abu M, Zango MS (2021) Geochemical evolution and tracing of groundwater salinization using different ionic ratios, multivariate statistical and geochemical modeling approaches in a typical semi-arid basin. *J Contam Hydrol* 236:103742. <https://doi.org/10.1016/j.jconhyd.2020.103742>
- Sutadian AD, Muttill N, Yilmaz AG, Perera BJC (2017) Using the analytic hierarchy process to identify parameter weights for developing a water quality index. *Ecol Indic* 75:220–233. <https://doi.org/10.1016/j.ecolind.2016.12.043>
- Szabolcs I, Darab C (1964) The influence of irrigation water of high sodium carbonate content of soils. In: *Proceedings of 8th international congress of ISSS, transmission, vol 2*. pp 803–812
- Tafreshi AM, Tafreshi GM, Keshavarzi MHB (2018) Qualitative zoning of groundwater to assessment suitable drinking water using fuzzy logic spatial modelling via GIS. *Water Environ J* 32:607–620. <https://doi.org/10.1111/wej.12358>
- Tampo L, Mande SLAS, Adekanmbi AO, Boguido G, Akpataku KV, Ayah A, Tchakala I, Gnazou MDT, Bawa LM, Boundjou GD, Alhassan EH (2022) Treated wastewater suitability for reuse in comparison to groundwater and surface water in a peri-urban area: implications for water quality management. *Sci Total Environ* 815:152780. <https://doi.org/10.1016/j.scitotenv.2021.152780>
- Tanvir Rahman MATM, Saadat AHM, Islam MdS, Al-Mansur MdA, Ahmed S (2017) Groundwater characterization and selection of suitable water type for irrigation in the western region of Bangladesh. *Applied Water Sci* 7:233–243. <https://doi.org/10.1007/S13201-014-0239-X>
- Telahigue F, Agoubi B, Souid F, Kharroubi A (2018) Assessment of seawater intrusion in an arid coastal aquifer, south-eastern Tunisia, using multivariate statistical analysis and chloride mass balance. *Phys Chem Earth, Parts a/b/c* 106:37–46. <https://doi.org/10.1016/j.pce.2018.05.001>
- Tian R, Wu J (2019) Groundwater quality appraisal by improved set pair analysis with game theory weightage and health risk estimation of contaminants for Xuecha drinking water source in a loess area in Northwest China. *Hum Ecol Risk Assess* 25(1–2):132–157. <https://doi.org/10.1080/10807039.2019.1573035>
- Tirupathi C, Shashidhar T, Pandey VP, Shrestha S (2019) Fuzzy-based approach for evaluating groundwater sustainability of Asian cities. *Sustain Cities Soc* 44:321–331. <https://doi.org/10.1016/j.scs.2018.09.027>
- Tzemi D, Mennig P (2022) Effect of agri-environment schemes (2007–2014) on groundwater quality; spatial analysis in Bavaria, Germany. *J Rural Stud* 91:136–147. <https://doi.org/10.1016/j.jrurstud.2022.03.006>
- Vadiati M, Nalley D, Adamowski J, Nakhaei M, Asghari-Moghaddam A (2019) A comparative study of fuzzy logic-based models for groundwater quality evaluation based on irrigation indices. *J Water Land Dev* 43:158–170. <https://doi.org/10.2478/jwld-2019-0074>
- Vadiati M, Asghari-Moghaddam A, Nakhaei M, Adamowski J, Akbarzadeh AH (2016) A fuzzy-logic based decision-making approach for identification of groundwater quality based on groundwater quality indices. *J Environ Manage* 184(2):255–270. <https://doi.org/10.1016/j.jenvman.2016.09.082>
- Yurtseven I, Randhir TO (2020) Multivariate assessment of spatial and temporal variations in irrigation water quality in Lake Uluabat

- watershed of Turkey. *Environ Monit Assess* 192:793. <https://doi.org/10.1007/s10661-020-08723-2>
- Zadeh L (1965) Fuzzy sets. *Inf Contr* 8:338–353
- Zadeh LA (1975) The concept of a linguistic variable and its application to approximate reasoning-I. *Inf Sci* 8(3):199–249. [https://doi.org/10.1016/0020-0255\(75\)90036-5](https://doi.org/10.1016/0020-0255(75)90036-5)
- Zhai Y, Jiang Y, Cao X, Leng S, Wang J (2022) Valuation of ecosystem damage induced by soil-groundwater pollution in an arid climate area: framework, method and case study. *Environ Res* 113013. <https://doi.org/10.1016/j.envres.2022.113013>

Publisher's note Springer Nature remains neutral with regard to jurisdictional claims in published maps and institutional affiliations.

Springer Nature or its licensor (e.g. a society or other partner) holds exclusive rights to this article under a publishing agreement with the author(s) or other rightsholder(s); author self-archiving of the accepted manuscript version of this article is solely governed by the terms of such publishing agreement and applicable law.