

Erratum to: Photoautotrophic propagation of Brazilian ginseng [*Pfaffia glomerata* (Spreng.) Pedersen]

Lourdes Iarema¹ · Ana Cláudia Ferreira da Cruz¹ · Cleber Witt Saldanha¹ ·
Leonardo Lucas Carnevalli Dias¹ · Roberto Fontes Vieira² ·
Evelyn Jardim de Oliveira¹ · Wagner Campos Otoni¹

Published online: 21 September 2016
© Springer Science+Business Media Dordrecht 2016

Erratum to: Plant Cell Tiss Organ Cult (2012)
110:227–238
DOI [10.1007/s11240-012-0145-6](https://doi.org/10.1007/s11240-012-0145-6)

Figure 4j in the original publication was an inadvertent duplication of Fig. 4g. The corrected Fig. 4 is shown below. The authors apologize for the error.

The online version of the original article can be found under
doi:[10.1007/s11240-012-0145-6](https://doi.org/10.1007/s11240-012-0145-6).

✉ Wagner Campos Otoni
wotoni@ufv.br

¹ Plant Tissue Culture Laboratory/BIOAGRO, Plant Biology Department, Federal University of Viçosa, University Campus, Peter Henry Rolfs Avenue, Viçosa, MG 36570-000, Brazil

² Embrapa Recursos Genéticos e Biotecnologia, Av. W5 Norte, Brasília, DF 70770-917, Brazil

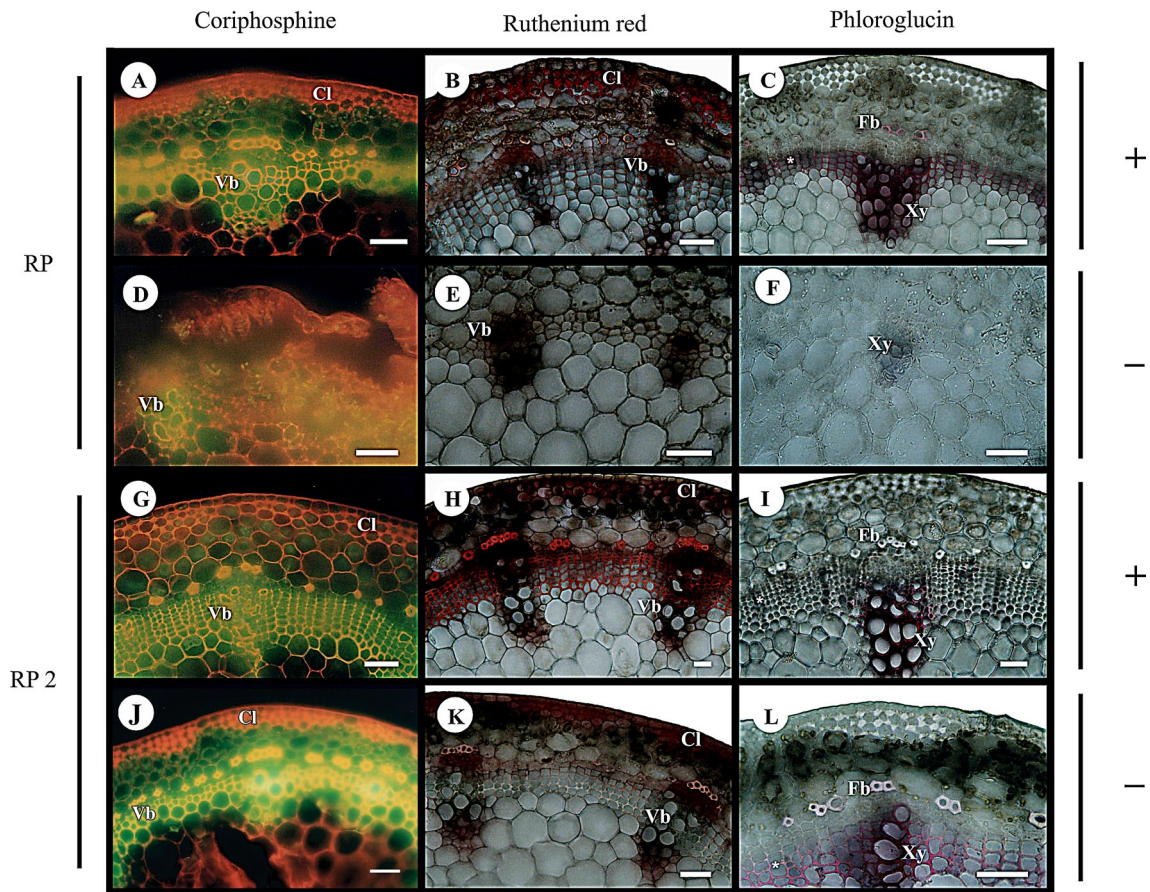


Fig. 4 Cross sections of the middle portion of the stem of *Pfaffia glomerata* propagated in vitro under different closure systems and sucrose concentrations, and stained with the following reagents: coriophosphine induced-fluorescence (**a, d, g, j**); ruthenium red (**b, e, h,**

k); and phloroglucin (**c, f, i, l**). **a–c** Rigid polypropylene (RP) cap; **d–f** RP with two membrane disks (RP2). *Cl* collenchyma; *Fb* fiber; *Vb* vascular bundle, and *Xy* xylem; + (presence) and – (absence) of sucrose. Bars 50 μ m