

Evidence of Twisted Flux-Tube Emergence in Active Regions

M. Poisson · C.H. Mandrini · P. Démoulin ·
M. López Fuentes

Received: 26 June 2014 / Accepted: 17 November 2014 / Published online: 11 December 2014
© Springer Science+Business Media Dordrecht 2014

Abstract Elongated magnetic polarities are observed during the emergence phase of bipolar active regions (ARs). These extended features, called magnetic tongues, are interpreted as a consequence of the azimuthal component of the magnetic flux in the toroidal flux-tubes that form ARs. We develop a new systematic and user-independent method to identify AR tongues. Our method is based on determining and analyzing the evolution of the AR main polarity inversion line (PIL). The effect of the tongues is quantified by measuring the acute angle $[\tau]$ between the orientation of the PIL and the direction orthogonal to the AR main bipolar axis. We apply a simple model to simulate the emergence of a bipolar AR. This model lets us interpret the effect of magnetic tongues on parameters that characterize ARs (*e.g.* the PIL inclination and the tilt angles, and their evolution). In this idealized kinematic emergence model, τ is a monotonically increasing function of the twist and has the same sign as the magnetic helicity. We systematically apply our procedure to a set of bipolar ARs (41 ARs) that were observed emerging in line-of-sight magnetograms over eight years. For most of the cases studied, the tongues only have a small influence on the AR tilt angle since tongues have a much lower magnetic flux than the more concentrated main polarities. From the observed evolution of τ , corrected for the temporal evolution of the tilt angle and its final value when the AR is fully emerged, we estimate the average number of turns in the subphotospherically emerging flux-rope. These values for the 41 observed ARs are below unity, except for one. This indicates that subphotospheric flux-ropes typically have a low amount of twist, *i.e.* highly twisted flux-tubes are rare. Our results demonstrate that

Electronic supplementary material The online version of this article (doi:[10.1007/s11207-014-0633-4](https://doi.org/10.1007/s11207-014-0633-4)) contains supplementary material, which is available to authorized users.

M. Poisson (✉) · C.H. Mandrini · M. López Fuentes
Instituto de Astronomía y Física del Espacio (IAFE), CONICET-UBA, Buenos Aires, Argentina
e-mail: marianopoisson@gmail.com

C.H. Mandrini · M. López Fuentes
Facultad de Ciencias Exactas y Naturales (FCEN), UBA, Buenos Aires, Argentina

P. Démoulin
Observatoire de Paris, LESIA, UMR 8109 (CNRS), 92195 Meudon Principal Cedex, France

the evolution of the PIL is a robust indicator of the presence of tongues and constrains the amount of twist in emerging flux-tubes.

Keywords Active regions, magnetic fields · Corona, structures · Helicity, magnetic · Helicity, observations

1. Introduction

It is widely recognized that magnetic helicity is one of the most relevant properties of the magnetic structures in the Sun. A significant magnetic helicity has been confirmed in countless observed solar features such as sunspot whorls, sigmoids, prominences, coronal mass ejections (CMEs), and, also, in interplanetary magnetic clouds (see examples in Démoulin and Pariat, 2009). The magnetic-helicity content of active regions (ARs) is associated with the free magnetic energy available to be released by reconnection during flares and CMEs (see, *e.g.*, Kusano *et al.*, 2004). Being a conserved quantity in ideal magnetohydrodynamic (MHD) regimes (Berger, 1984), magnetic helicity provides information about the mechanisms of formation and evolution of magnetic fields in the solar interior and atmosphere, which can be traced from the convective zone to the corona and to the interplanetary medium (see Nakwacki *et al.*, 2011, and references therein).

Both numerical simulations and observations indicate that magnetic-flux-tubes that emerge from the solar interior and form ARs transport magnetic helicity acquired when they develop, most likely at the bottom of the convective zone (Fan, 2009). Their magnetic helicity is due to the rotation of the magnetic-field lines around the main axis of the tube (the so-called twist) and the deformation of the axis as a whole (known as writhe: see López Fuentes *et al.*, 2003). Flux-tubes with a non-null magnetic helicity are called flux-ropes. Ever since the first two-dimensional (2D) simulations (see, *e.g.*, Emonet and Moreno-Insertis, 1998), it has been proposed that to survive the interaction with the convective zone plasma, the emerging flux-ropes must have a certain minimum amount of twist. Although more sophisticated 3D simulations provide different thresholds, twist is regarded as a fundamental feature of flux-tube emergence (Fan, 2001).

It has been shown recently that twist plays an important role during the crossing of the emerging structure through the subadiabatic interface between the top layer of the convective zone and the photosphere (see the review by Hood, Archontis, and MacTaggart, 2012). In the simulations, the top of the flux-rope expands and becomes flat as it crashes against the overlying photosphere since the ambient plasma pressure decreases very rapidly with height (*i.e.* the scale height is about 150 km). Then, the flux-rope top is no longer buoyant and the magnetic flux is stored below the photosphere. When enough magnetic flux has accumulated, the so-called Parker instability develops and allows the magnetic flux to emerge into the solar chromosphere and corona. At the beginning, only small portions of the original flux-rope emerge in the form of thin sea-serpent tubes (Strous *et al.*, 1996; Pariat *et al.*, 2004). Recently, Valori *et al.* (2012) studied the emergence of an AR and found that the first manifestations of the emergence occur in the form of small bipoles, which are consistent with the sea-serpent scenario. The characteristic size of the bipoles can be associated with the instability wavelength (see also Bernasconi *et al.*, 2002; Otsuji *et al.*, 2011; Vargas Domínguez, van Driel-Gesztelyi, and Bellot Rubio, 2012). As the flux continues to emerge in this way, coalescence and reconnection lead to the formation of larger flux concentrations and the observation of pores, sunspots, and faculae (see Toriumi, Hayashi, and Yokoyama, 2012, and references therein). Murray *et al.* (2006, 2008) showed that the amount of twist in

the flux-rope can determine its ability to emerge into the atmosphere. The higher the twist and the stronger the magnetic tension, the greater the tube cohesion is and the faster the instability and emergence occur. Numerical studies predict that the emergence process leads to the formation of a new flux-rope and the development of a sigmoidal structure in the corona (see, *e.g.*, Hood *et al.*, 2009).

The structure of flux-ropes determines many of the features observed in line-of-sight photospheric magnetograms during flux emergence. One of the most conspicuous among them is magnetic tongues (or tails). These features are observed during the emergence of the top part of Ω -shaped flux-ropes and are produced by the line-of-sight projection of the azimuthal component of the magnetic field. Magnetic tongues are observed in magnetograms as deformations or extensions of the main polarities that form bipolar ARs. They were originally reported by López Fuentes *et al.* (2000) and observed later in other works (see, *e.g.*, Li *et al.*, 2007; Chandra *et al.*, 2009; Luoni *et al.*, 2011). They have been found in numerical simulations of emerging flux-ropes (Archontis and Hood, 2010; MacTaggart, 2011; Jouve, Brun, and Aulanier, 2013). Luoni *et al.* (2011) compared the helicity-sign inferred from the orientation of magnetic tongues, observed in line-of-sight magnetograms, with other known helicity-sign proxies for a sample of 40 ARs. To characterize the effect of the tongues, these authors computed the elongation of the main AR polarities and the evolution of the polarity inversion line (PIL). Their results confirmed that the photospheric magnetic-flux distribution, associated with the presence of tongues, can be used as a reliable proxy for the helicity sign.

In this article we develop a novel systematic method for quantifying the effect of the magnetic tongues during the emergence of ARs. Preliminary results of the application of our method have been given by Poisson *et al.* (2012). In Section 2, we briefly describe the observations used in our study. We define a new parameter $[\tau]$ (Section 3) to characterize the tongues. τ measures the angular difference between the PIL orientation and the direction orthogonal to the main AR bipolar axis. We discuss our procedure of computing the inclination of an AR PIL (Section 3.2) and its uncertainty, which is reflected in the confidence interval when we determine τ (Section 3.3). In Section 4, we systematically analyze all of the isolated bipolar AR observed during eight year for which the full emergence was visible in line-of-sight magnetograms. We illustrate our results, showing in detail a few examples of the application of our algorithm. These are compared with those coming from synthetic ARs obtained by simulating the kinematic emergence of toroidal flux-ropes. In Section 5 we define and use the average and highest values of the computed parameters to compare observed ARs that have different characteristics. Finally, in Section 6, we summarize our findings and conclude that the proposed systematic method provides a solid way to determine quantitatively the properties of magnetic tongues, setting constraints on emergence models.

2. Observations and Data Analysis

The data used in this work come mainly from the *Michelson Doppler Imager* (MDI: Scherrer *et al.*, 1995) onboard the *Solar and Heliospheric Observatory* (SOHO). MDI provides full-disk maps of the line-of-sight component of the magnetic field in the photosphere with a spatial resolution of $\approx 1.98''$. We use level 1.8 maps, which are the average of five magnetograms with a cadence of 30 seconds. These maps are constructed once every 96 minutes. The error in the flux densities per pixel in these MDI magnetograms is 9 G. For ARs appearing on the solar disk by the end of 2010 and later, when MDI provided magnetic data

sporadically, we use observations by the *Helioseismic and Magnetic Imager* (HMI: Schou *et al.*, 2012) onboard the *Solar Dynamics Observatory* (SDO). HMI full-disk magnetograms have a spatial resolution of $0.5''$ and a 45-second cadence. The precision in the flux density per pixel in HMI line-of-sight measurements is 10 G.

We selected ARs that appeared on the solar disk between the start of the decay of Solar Cycle 23 (\approx January 2003) and the beginning of the maximum of Cycle 24 (around the beginning of 2011). This solar minimum was peculiar in that it showed the lowest number of sunspots recorded in the past 100 years (Bisoi *et al.*, 2014). This is particularly favorable for this study, since isolated ARs with simple magnetic configurations and low background flux are best suited to derive AR properties. We systematically searched for ARs in this period of time (eight years) by examining SOHO/MDI and SDO/HMI images provided by the Helioviewer website (www.helioviewer.org). After selecting the ARs in this way, we retrieved the corresponding original data from the instrument data bases.

We restricted our selection to bipolar ARs because in these cases the main PIL can be better defined and the magnetic tongues are not distorted by multiple flux emergences. We chose ARs that started to emerge before crossing the central meridian and not farther than 30° East of this location. In this way, most of their emergence phase can be observed close to disk center and foreshortening effects are minimized. During this solar-minimum period, we found 41 well-isolated ARs emerging in the quiet Sun that fulfill the required bipolar configuration and emergence conditions. Although the constraints on the characteristics of the selected ARs limit the statistical strength of our results, the main aim here is to apply and test new methods for determining the degree of twist of ARs.

To build our set of analysis, we first rotated all full-disk magnetograms to the date of central meridian passage (CMP) of the region of interest. In this way, we accounted for the known rotation rate of the Sun at the corresponding latitude. We also applied corrections for the flux-density reduction due to the angle between the observer and the assumed radial magnetic-field direction (see Green *et al.*, 2003 for a description of this radializing procedure). After this correction, the term PIL corresponds to the polarity inversion line of the component of the field normal to the photosphere. When radializing the observed magnetic field, we neglected the contribution of the field components in the photospheric plane; this contribution can be high when the AR lies farther from disk center, but this is not the case for our set of selected ARs. For these first steps, we used standard Solar Software tools.

Then, from the set of full-disk magnetograms covering the evolution of each AR, we chose and extracted rectangular boxes of variable sizes encompassing the AR main polarities. The selection was made by eye on the first, middle, and last magnetogram included in the analyzed period. The rectangles for the intermediate magnetograms were chosen by interpolating linearly between the locations of the corners of the first and middle rectangle, and from this one to the last chosen rectangle. We produced movies for each AR to check by eye that the selection made in this way contains all of the AR emerging flux within our rectangles. If this was not the case, we refined our procedure by taking intermediate magnetic maps for the interpolation. The analyzed temporal range extends from the first appearance of the AR polarities until the maximum flux is reached and/or foreshortening effects are strong.

3. Characterizing Magnetic Tongues

3.1. Why Use the Inclination of the PIL?

To illustrate the main characteristics of magnetic tongues, in particular their link to the flux-rope twist, we first present a simplified model of the emergence of an AR. This model also

shows how the PIL inclination lets us characterize the evolution of the magnetic tongues during the emergence phase.

We mimicked an AR emergence across the photosphere using a toroidal magnetic flux-tube with twist. The model is the same as the one presented in Appendix A of Luoni *et al.* (2011). The upper half of the torus progressively emerges without distortion. Our simple model does not take into account the Coriolis force, the effects of turbulence, and the deformations and reconnections occurring during the emergence. Its aim is only to provide a general description summarizing the typical observed evolution of the photospheric magnetic field during the emergence of an AR, more precisely the evolution of the magnetic tongues. It is also used to test the numerical method that we developed (Section 3.2). The procedure consists of cutting the toroidal rope by successive horizontal planes, which play the role of the photosphere at successive times, and computing the magnetic-field projection in the direction normal to these planes. In this way, we obtain synthetic magnetograms with evolving tongues. The parameters that characterize the torus are a main radius [R], a small radius [a], and the maximum axial-field strength [B_{\max}] (see Figure 12 of Luoni *et al.*, 2011). The torus center is located at a depth $-d$ below the photospheric plane. As the emergence proceeds, $-d$ varies between $-(R + a)$ and 0 (see Figure 2 of Luoni *et al.*, 2011). The sign and amount of magnetic twist of the modeled AR is given by imposing a uniform number of turns [N_t] on the magnetic-field lines around the torus axis. N_t corresponds to half of the emerging torus.

Figure 1 shows an example of a flux rope with $N_t = 1$ as it emerges at the photospheric level. The flux-rope axis is along the x -direction. The deformation of the polarities, the tongues, due to the twist is evident in Figure 1a. As the flux rope emerges, the polarities in the AR tend to separate and the tongues retract (Figure 1b). In this simple model for a non-twisted flux-tube with $N_t = 0$ (not shown here) both polarities would have a round shape (symmetric in the y -direction) at all time steps, *i.e.* tongues are absent. In Figures 1a, b we plot black continuous lines that join the flux-weighted centers (which we call barycenters) of the positive and negative magnetic polarities and the PIL, which has been computed as described below in Section 3.2. The AR main bipolar axis joins the following to the leading barycenter; we define the bipole vector relative to this axis. As the flux rope emerges and magnetic tongues appear, the PIL is first inclined in the east–west direction. When all of the flux has emerged and the polarities depart from each other, the PIL tends to be perpendicular to the main axis of the bipole.

Next, we define the angles that are illustrated in Figures 2a and 2b for a positive and negative twist of the flux tube. The angle [ϕ] between the east–west direction and the bipole vector corresponds to the AR tilt. ϕ lies between -90° and 90° . The inclination of the PIL [θ] is defined from the east–west direction. Since the PIL direction is defined modulo 180° , we select θ so that $\theta - \phi$ lies between 0° and 180° . Next, we define the tongue angle [τ] as the acute angle between the PIL direction and the direction orthogonal to the AR bipole vector. τ is related to θ and ϕ as

$$\tau = \phi - \theta + 90^\circ. \quad (1)$$

The range for $\theta - \phi$ implies that τ lies between -90° and 90° , as required. This definition of τ uses the bipole vector as a reference direction since it can be directly derived from magnetograms; however, as we show in Section 5.2, the bipole vector is only a first approximation to the orientation of the main axis of the bipole.

We now interpret τ in terms of the curved and twisted flux-tube model presented in Luoni *et al.* (2011). When a flux-rope has no twist, the PIL is orthogonal to the bipole vector,

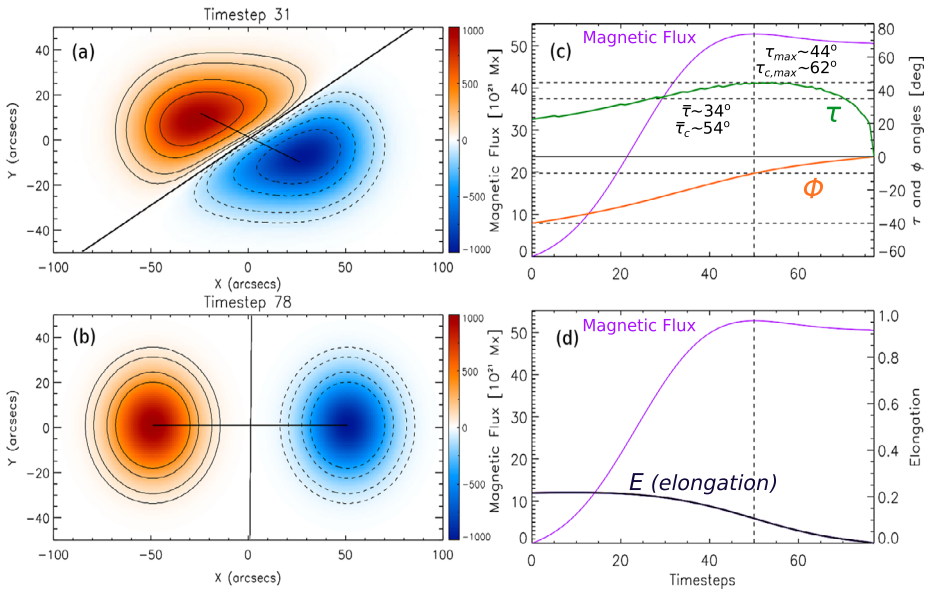


Figure 1 Synthetic magnetograms obtained from the AR-emergence model based on the rise of a toroidal flux rope with a positive twist, $N_t = 1$, and an aspect ratio $a/R = 0.4$. (a) and (b) correspond to two different time steps of the simulated emergence. The flux-rope axis is in the x -direction. The continuous (dashed) lines are isocontours of the positive (negative) magnetic-field component normal to the photosphere, drawn for four different values taken at 10, 25, 50, and 70 % of the axial field strength $B_{max} = 2000$ G. The red- and blue-shaded regions indicate positive and negative polarities, respectively. (c) and (d) illustrate the evolution of the magnetic flux (violet continuous line), τ (green line), ϕ (orange line), and the elongation for both polarities (black line) for the modeled AR. The angles τ and ϕ are defined in Figure 2. Panel c shows the values of $\bar{\tau}$, τ_{max} , $\bar{\tau}_c$, and $\tau_{c,max}$; these parameters are defined in Section 5. The vertical-dashed line is drawn at maximum flux. The horizontal-dashed lines, close to the corresponding curves, indicate particular values of τ and ϕ .

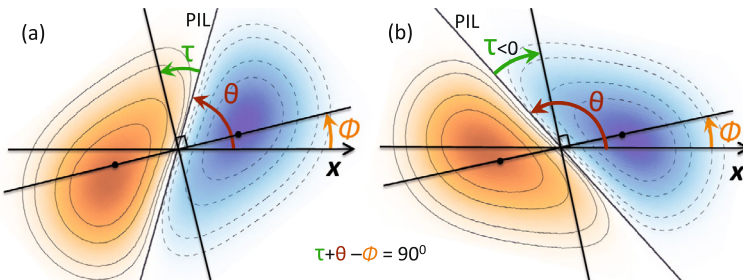


Figure 2 The angles defined in Section 3.1 for a flux rope with (a) a positive and (b) negative magnetic helicity. All angles are positive when computed in a counter-clockwise direction. ϕ is the tilt of the AR bipole, and θ is the inclination of the PIL, both calculated from the east–west direction. The tongue angle $[\tau]$ is defined as the acute angle between the PIL direction and the direction orthogonal to the AR bipole. With this definition, τ is a monotonically increasing function of the twist (*i.e.* the number of turns), and it always has the same sign as the magnetic helicity of the modeled flux-rope.

implying $\tau = 0$. When the flux-rope has a positive twist, tongues are present, as we show in Figure 2a. Then, τ is positive and it increases monotonically with the twist (due to an increasing contribution of the azimuthal component of the magnetic field to the component

orthogonal to the photosphere). When the flux-rope has a negative twist, tongues are present, as shown in Figure 2b; in this case, τ takes a negative value that becomes monotonically more negative as the magnitude of the negative twist increases.

In Figures 1c, d we present the results derived from the model in the same way as we describe below for the observed ARs. We plot the AR tilt [ϕ], the magnetic flux, and τ versus the time step. The plots show that there is a characteristic evolution of these AR parameters associated with the formation of the tongues. The magnetic flux in the tongues affects the computation of the polarity barycenters; that is, the estimated value of ϕ . In our example, the tilt is initially around -40° ; then, it monotonically decreases to zero, implying a fast rotation of the bipole (Figure 1c). This rotation is only apparent because the flux-rope axis is in fact always in the x -direction. The finite twist also has a consequence for the magnetic-flux evolution, which reaches a maximum because of the added flux due to the projection of the azimuthal-field component on the direction orthogonal to the photosphere. As the emergence continues, the contribution of the azimuthal flux decreases and disappears when half of the torus has crossed the photospheric plane, *i.e.* the flux-rope legs are orthogonal to this plane (Figures 1c, d). In observed line-of-sight magnetograms, such a decrease of the magnetic flux might be erroneously interpreted as flux cancellation. Furthermore, the sign of τ is well defined throughout the emergence; as shown in Figure 1c, it tends to zero as the tongues retract and disappear.

Another parameter that characterizes the presence of magnetic tongues is the elongation [E] of the AR polarities. Figure 1d shows the evolution of the elongation of the polarities, computed as defined in Appendix B of Luoni *et al.* (2011). It is highest at the beginning of the emergence phase and monotonically decreases as the flux-rope emerges. The signature of the tongues on the elongation weakens much earlier than that on τ , as shown in Figure 1d. However, the smaller E , the more uncertain is τ , because τ is more easily affected by the magnetic flux that does not belong to the emerging flux-rope (*e.g.* background flux in observed ARs).

3.2. Computing the PIL Location

In an observed magnetogram, the PIL can be a very complicated curved line. Therefore, the difficulty in tracing the PIL systematically makes it difficult to measure the τ - and θ -angles without ambiguity. However, only the general direction of the PIL is relevant for characterizing the twist of the emerging flux-rope. Following Luoni *et al.* (2011), we therefore designed a systematic procedure to compute a straight approximation to the PIL of an AR. In this latter article, a linear function [$ax + by + c$] was fitted to the magnetogram [$B_o(x, y)$], where a , b , and c are parameters to be determined by a least-squares fit, and x and y are the spatial coordinates. This implies a strong contribution of the intense field regions, which are not part of the AR tongues (since both functions are large, although different, away from the PIL). In particular, the distribution of the flux in the main AR polarities could have a significant effect on the computed PIL. Then, the fitting had to be spatially limited to the portion of the AR with tongues; this resulted in a cumbersome procedure in which the region where the fitting was made had to be selected by eye case by case. We design below a new method to solve this difficulty.

Our systematic procedure includes only the sign of the linear function $ax + by + c$, avoiding high values away from the PIL. Moreover, we use the absolute value of the observed magnetic field in front of the fitted function. Then, we define the function $D(a, b, c)$ to be minimized as

$$D(a, b, c) = \int_{x,y} |\text{sign}(ax + by + c)| B_o - B_o|^2 dx dy, \quad (2)$$

where $B_o = B_o(x, y)$ is the observed field, and the integration is made over the AR (more precisely, avoiding surrounding fields that do not belong to the AR as best possible). This integral approach was chosen to have robust results (*i.e.* not sensitive to small polarities and noise of the magnetograms). The contribution of each magnetogram pixel to D was chosen proportional to the square of the field strength, so that low-field pixels contribute less.

This procedure separates the magnetogram into a dominantly positive and a dominantly negative region. By construction the pixels of the magnetogram where the field sign agrees with the sign corresponding to their side do not contribute to D because for these positions the function $\text{sign}(ax + by + c)|B_o| - B_o = 0$. Therefore, the best fit is obtained by minimizing the contribution that lies in the “incorrect”-sign side of the PIL. In particular, the strong-field regions of a bipolar AR do not contribute to $D(a, b, c)$ because they are on the “correct”-sign side of the PIL; in this way, the full AR can be included. More generally, the pixels far away from the computed PIL either do not contribute (correct sign) or have a constant contribution (incorrect sign). Then, the minimization of $D(a, b, c)$ over the full magnetogram is obtained by a compromise among the pixels that are in the vicinity of the computed PIL. This method has the advantage that it can be systematically applied to the full spatial extension of any bipolar AR. The disadvantage is that the minimization of $D(a, b, c)$ does not reduce to a standard least-squares fit as in Luoni *et al.* (2011), and the method is numerically more expensive.

A more practical way to write the function $ax + by + c$ is to use as parameters the position where the PIL crosses the segment that joins the barycenters of the main polarities and the PIL angle. If \mathbf{r}_P and \mathbf{r}_F are the vectors pointing to the barycenters of the positive and negative polarities, respectively, the point where the PIL intersects the vector $\mathbf{r}_P - \mathbf{r}_F$ is simply defined using a parameter s , such that $0 \leq s \leq 1$ with $s = 0$ on \mathbf{r}_F and $s = 1$ on \mathbf{r}_P . Then, the PIL intersection with the vector $(\mathbf{r}_P - \mathbf{r}_F)$ is located at

$$\mathbf{r}(s) = (x_s, y_s) = \mathbf{r}_F + s(\mathbf{r}_P - \mathbf{r}_F). \quad (3)$$

The other parameter is the PIL angle $[\theta]$. The function $(ax + by + c)$ is rewritten as $(x - x_s) \sin \theta + (y - y_s) \cos \theta$. Then, Equation (2) becomes

$$D(s, \theta) = \int_{x,y} |\text{sign}((x - x_s) \sin \theta + (y - y_s) \cos \theta)|B_o| - B_o|^2 dx dy, \quad (4)$$

which only depends on the parameters s and θ . Therefore, the aim is to find a global minimum for $D(s, \theta)$. This is achieved by discretizing the parameter space (s_n, θ_m) such that two nearby points, s_n and s_{n+1} , are not farther than one-fourth of the magnetogram resolution and the step in θ_m is of about one degree. We computed Equation (4) on the resulting grid and found the global minimum value of $D(s_n, \theta_m)$.

3.3. Errors in the PIL Inclination Angle and τ Angle

When minimizing $D(s_n, \theta_m)$ in Equation (4), we found some ARs in which disperse or complex polarities give multiple minima of D . From all of these minima, we selected the global one.

To estimate the error in the PIL inclination angle and, therefore, in the τ -angle that we used to characterize the AR tongues, we evaluated how stable this global minimum is. To do so, we proceeded as follows: First, we identified all of the pixels that contributed to D (*i.e.* they are on the incorrect-sign side of the PIL). Since these pixels are expected to be associated with parasitic polarities, not with the main polarities, we set the magnetic-field values of these pixels to zero and produced a modified magnetogram. This new magnetogram has different characteristics than the original one, *i.e.* the barycenters of the positive and negative main polarities are at a different location. For this modified magnetogram, we

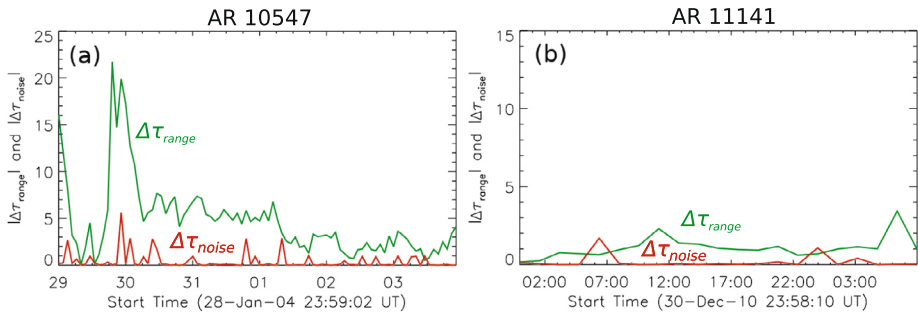


Figure 3 Range of τ , $\Delta\tau_{\text{range}} = \tau_M - \tau_m$ (green-continuous line) for the systematic errors due to incorrect-sign side polarities, and $\Delta\tau_{\text{noise}}$ (red-continuous line), computed by adding random noise in the range $[-10 \text{ G}, 10 \text{ G}]$ to the magnetograms (see Section 3.3). (a) AR 10547 observed by MDI (see Figure 5), (b) AR 11141 observed by HMI (see Figure 8). These errors correspond to the emergence period when computed between the two vertical black-dashed lines shown in Figures 5 and 8.

computed a new bipole vector and PIL; then, we obtained a new set of parameters [s_1 and θ_1]. Furthermore, the number of pixels in the incorrect-sign side for this new PIL are different from the original magnetogram. This procedure of removing the pixels on the incorrect-sign side was made iteratively until their total flux was low enough. More precisely, we stopped the iteration when the magnetic flux in the pixels located in the incorrect-sign side of the PIL was below 10 % of the total unsigned flux of the AR. We fixed this percentage to save computation time and tested that taking it below 10 % does not affect our results. Moreover, if the change in τ obtained during a step is on the order of the step we took in θ , we also stopped the iteration. Finally, following the previous procedure, we determined the systematic error range in τ [τ_m, τ_M] within which all of the estimated τ -values lie. The procedure provides a confidence interval defined by the presence or absence of polarities with the incorrect sign on both sides of the PIL. The figures in Section 4 illustrate the ranges in τ for several observed ARs.

Another source of error in determining τ is the noise in the measured magnetic field. We added noise to the synthetic magnetograms generated from our flux-emergence model and also to the observed magnetograms. Considering that this noise is random, in the range $[-10 \text{ G}, 10 \text{ G}]$ as for observations, and that we worked with an integral expression (Equation (4)), we expect the effect of this statistical error to be small or even negligible in determining the PIL direction. The error is given by the standard deviation of τ [$\Delta\tau_{\text{noise}}$]. For the model magnetograms, the error in τ in general remains below the angular step taken in θ (0.9°). For the observed ARs, the largest statistical error in τ is typically below 25 % of the systematic error because of incorrect-sign polarities on both sides of the computed PILs. Figure 3 shows the computed errors along the emergence of two ARs, one observed by MDI and one by HMI. The systematic error in τ is reported as the range within which its value can vary in Figures 4–10; this is shown by the green lines with variable thickness in these figures. All these results show that the tongues are well characterized by the angle τ .

4. The Evolution of the PIL in Observed ARs

4.1. General

We describe the evolution of τ and other AR parameters that can be affected by tongues for some examples (Figures 4–10) in our set of emerging bipolar ARs (41) observed between

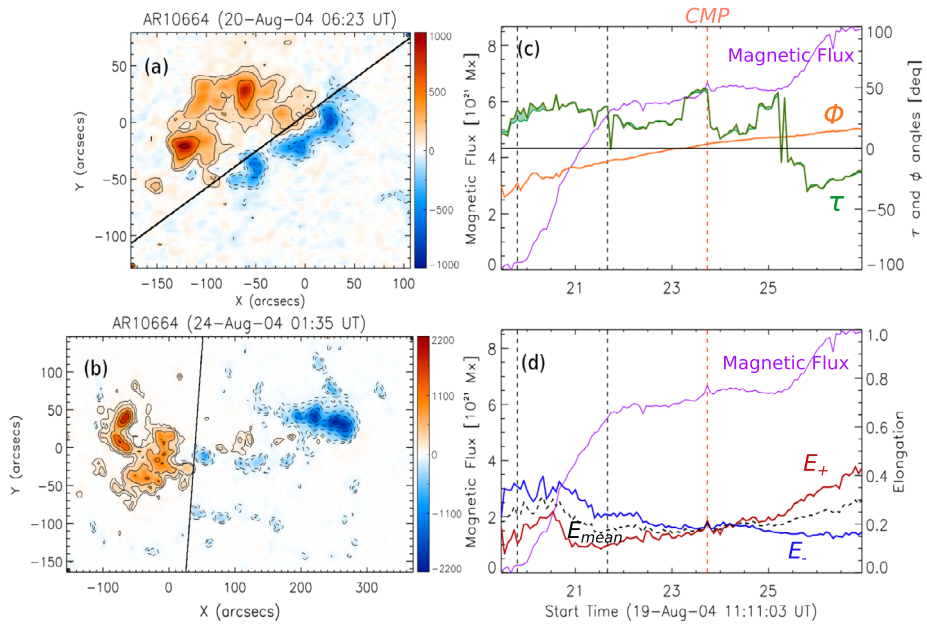


Figure 4 Emergence of AR 10664 observed by MDI. Panels a and b correspond to magnetograms at two different times. The continuous (dashed) lines are isocontours of the positive (negative) magnetic-field component normal to the photosphere, drawn for 100, 200, 500, 1000, and 1500 G (and the corresponding negative values). The red- and blue-shaded regions indicate positive and negative polarities, respectively. In these panels the horizontal (vertical) axis corresponds to the east–west (south–north) direction on the Sun. (c) Evolution of the magnetic flux (violet-continuous line), τ (green line), and the tilt angle (orange line) as defined in Figure 2. (d) Elongation of the positive (negative) polarity with red (blue)-continuous line. The mean elongation is depicted with a black dotted line. As a reference, we have added to this panel the evolution of the magnetic flux drawn in violet. The two vertical dashed-black lines mark the period of time in which we performed our computations, the orange vertical dashed line indicates the AR central meridian passage (CMP).

early 2003 and early 2011. These examples were selected to show the variety of cases in the set. The lowest total magnetic flux in the first ten selected rectangles, before the time period shown for each AR, was subtracted from all the following ones, *i.e.* the magnetic-flux curve always starts from zero.

Several problems intrinsic to photospheric flux emergence can complicate our analysis and, thus, either limit the number of magnetograms used for an AR or produce fluctuating (although still coherent) results. We have dealt with these problems in most of the studied cases.

We attach movies to this article ([see the online material](#)) that display the evolution of these seven ARs. All of the movies show isocontours of the positive (negative) magnetic field in red (blue) continuous lines. The isocontour values are 50, 100, 500, and 1000 G (and the corresponding negative ones). Surrounded by a green-dashed line rectangle, we depict the region selected to calculate all parameters in each frame. A black-straight line joins the polarity barycenters (the extended violet line is included to guide the eye). The green-straight line corresponds to the computed PIL. The black arc marks the angles between these two straight lines.

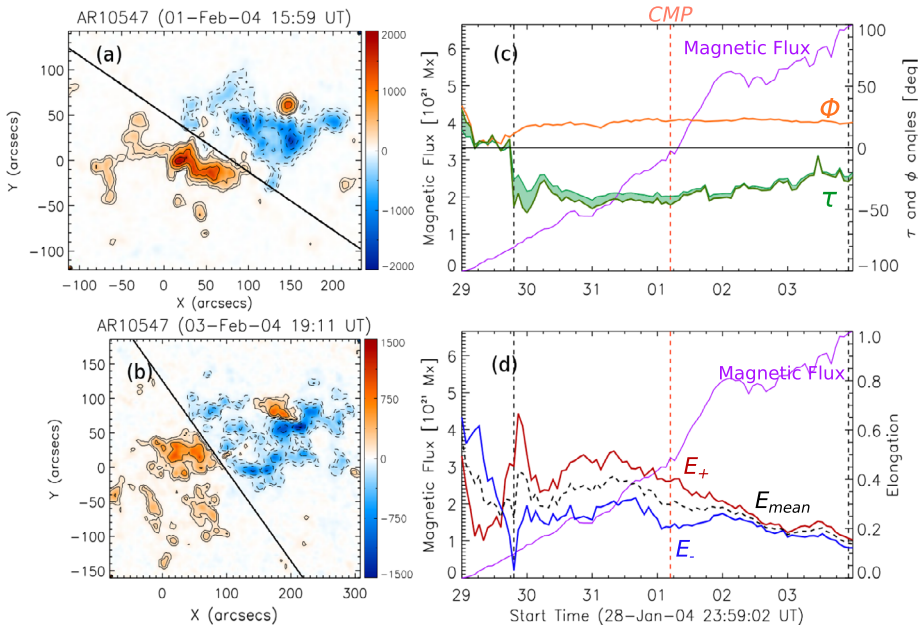


Figure 5 Emergence of AR 10547 observed by MDI. Panels a and b correspond to magnetograms at two different times. The continuous (dashed) lines are isocontours of the positive (negative) magnetic-field component normal to the photosphere, drawn for 100, 200, 500, 1000, and 1500 G (and the corresponding negative values). In these panels the horizontal (vertical) axis corresponds to the east–west (south–north) direction on the Sun. (c) Evolution of the magnetic flux (violet-continuous line), τ (green line), and the tilt angle (orange line) as defined in Figure 2. (d) Elongation of the positive (negative) polarity with red (blue) continuous line. The mean elongation is depicted with a black dotted line. As a reference, we have added to this panel the evolution of the magnetic flux drawn in violet. The two vertical dashed-black lines mark the period of time in which we performed our computations, the orange vertical-dashed line indicates the AR central meridian passage (CMP). In this example, τ is stable and well determined (the systematic error range is narrow, as shown by the thickness of the green curve).

4.2. Examples of Positive and Negative Twist

In Figures 4 and 5 we show two examples of ARs with positive and negative magnetic helicity. AR 10664 (Figure 4) emerged in the southern hemisphere (S11) on 19 August 2004. Magnetic tongues are clear during a first emergence episode (Figure 4a) until around 21 August at 12 UT. The magnetic flux reached a local maximum and started to increase much more slowly. The value of τ started to fluctuate as the location of the PIL was affected by this slow magnetic flux increase in between the two main AR polarities. By early 24 August the AR PIL was almost orthogonal to the east–west direction (Figure 4b). After 25 August, the magnetic flux in this secondary flux emergence increased more steeply, but tongues were not clearly discernible. The sign of τ during the first episode corresponds to a positively twisted flux rope (Figure 4c). Both the evolution of τ and ϕ follow the one shown in Figure 1 during the period marked between the two vertical black-dashed lines, *i.e.* the distance between the curves of τ and ϕ remains almost constant. In Section 5.2 (see Equation (5)) we show that this distance is related to a corrected value of τ .

AR 10547 (Figure 5) was another southern hemisphere (S9) region that appeared on 29 January 2004. This AR emerged quite slowly, *i.e.* AR 10547 reached a magnetic flux of

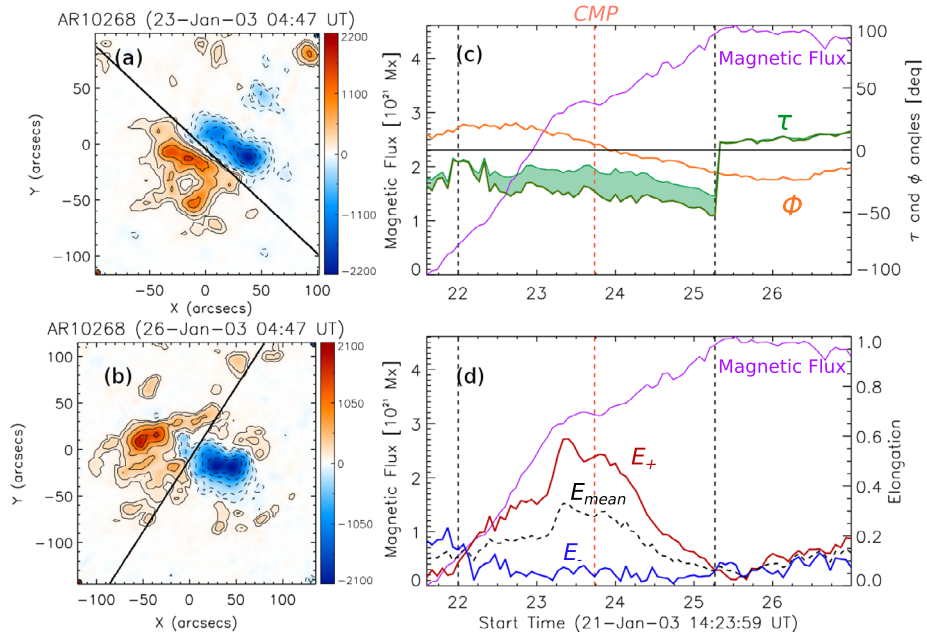


Figure 6 Emergence of AR 10268 observed by MDI. Panels a and b correspond to magnetograms at two different times. The continuous (dashed) lines are isocontours of the positive (negative) magnetic-field component normal to the photosphere, drawn for 100, 200, 500, 1000, and 1500 G (and the corresponding negative values). The red- and blue-shaded regions indicate positive and negative polarities, respectively. In these panels the horizontal (vertical) axis corresponds to the east–west (south–north) direction on the Sun. (c) Evolution of the magnetic flux (violet continuous line), τ (green line), and the tilt angle (ϕ) as defined in Figure 2. (d) Elongation of the positive (negative) polarity with red (blue) continuous line. The mean elongation is depicted with a black dotted line. As a reference, we have added to this panel the evolution of the magnetic flux drawn in violet. The two vertical dashed-black lines mark the period of time in which we performed our computations, the orange vertical-dashed line indicates the AR central meridian passage (CMP). Same plots as in Figure 4 for AR 10268, which has a magnetic flux lower by a factor of two. In this example, τ presents the largest uncertainties when compared with the ARs in Figures 4–10 (as shown by the thickness of the τ -curve).

7×10^{21} Mx after six days of emergence. From late 30 January until early 3 February, we observe clear magnetic tongues with the typical shape corresponding to a negative twist (Figures 5a, b). The distance between τ and ϕ remained approximately constant and slowly decreased as the AR fully emerged and tongues disappeared (Figure 5c), in a similar way to the flux-rope model (mirroring Figure 1 to have the negative-twist case). However, ϕ remains approximately constant, which implies that the tongues do not affect the direction of the AR tilt, *i.e.* there is no apparent rotation of the AR main bipole because of the tongues (see Section 5.2). In this particular case, the analysis was discontinued before the highest flux value was reached because the AR is farther from disk center than our imposed selection criterion.

Since the polarities are not equally elongated, as happens in the modeled ARs, Figures 4d and 5d show the elongation of the positive [E_+] and negative [E_-] polarities and their average [E_{mean}] independently. The definition of these parameters is the same as that of Equation (14) in Luoni *et al.* (2011), and E_{mean} is the average between E_+ and E_- . In both cases the evolution of the polarity elongation is consistent with that of the model AR (Figure 1 and its mirror for a negative-twist flux rope) between the two vertical black-dashed lines, which

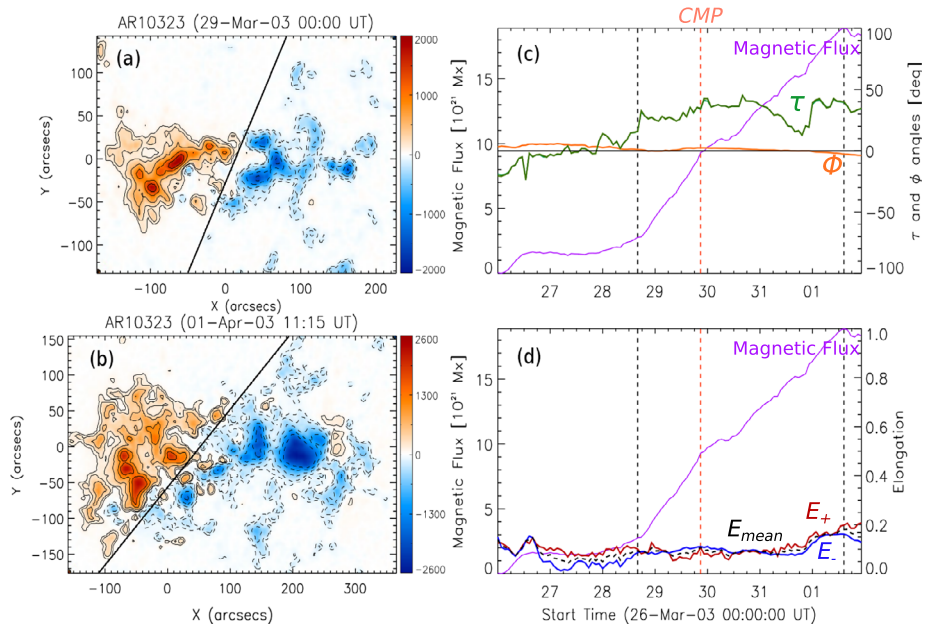


Figure 7 Emergence of AR 10323 observed by MDI. Panels a and b correspond to magnetograms at two different times. The continuous (dashed) lines are isocontours of the positive (negative) magnetic-field component normal to the photosphere, drawn for 100, 200, 500, 1000, and 1500 G (and the corresponding negative values). In these panels the horizontal (vertical) axis corresponds to the east–west (south–north) direction on the Sun. (c) Evolution of the magnetic flux (violet continuous line), τ (green line), and the tilt angle (orange line) as defined in Figure 2. (d) Elongation of the positive (negative) polarity with red (blue)-continuous line. The mean elongation is depicted with a black-dotted line. As a reference, we have added to this panel the evolution of the magnetic flux drawn in violet. The two vertical dashed-black lines mark the period of time in which we performed our computations, the orange vertical-dashed line indicates the AR central meridian passage (CMP). Similar plots as in Figure 4 for AR 10323, which has a magnetic flux higher by a factor of two.

mark the period of time that we analyzed (as in Figures 4c and 5c). After some strong fluctuations of the elongation due to the difficulty in measuring the parameters at the emergence initiation (in particular for AR 10547), in both cases, as in most of the studied ARs, there is a clear asymmetry between the elongations of the polarities. This is related to the known observed asymmetry of the polarities in bipolar ARs, *i.e.* the magnetic flux in the preceding polarity is concentrated, while it is dispersed in the following one (van Driel-Gesztelyi and Petrovay, 1990; Fan, Fisher, and Deluca, 1993; van Driel-Gesztelyi and Green, 2014). As discussed in Section 3.1, the flux-rope model used in this article does not take into account these asymmetries. However, it is noteworthy that our results show that these asymmetries do not affect the applicability of the method to determine the direction of the PIL. The general trend for the elongation curves is a marked decrease as the AR reaches the highest flux for each emergence, while τ is still measurable.

4.3. Examples of Low and High Magnetic Flux

In Figures 6 and 7 we show two other examples. These have a highest magnetic flux lower by a factor of ≈ 2 for AR 10268 and higher by a factor of ≈ 2 for AR 10323 than in the previous cases.

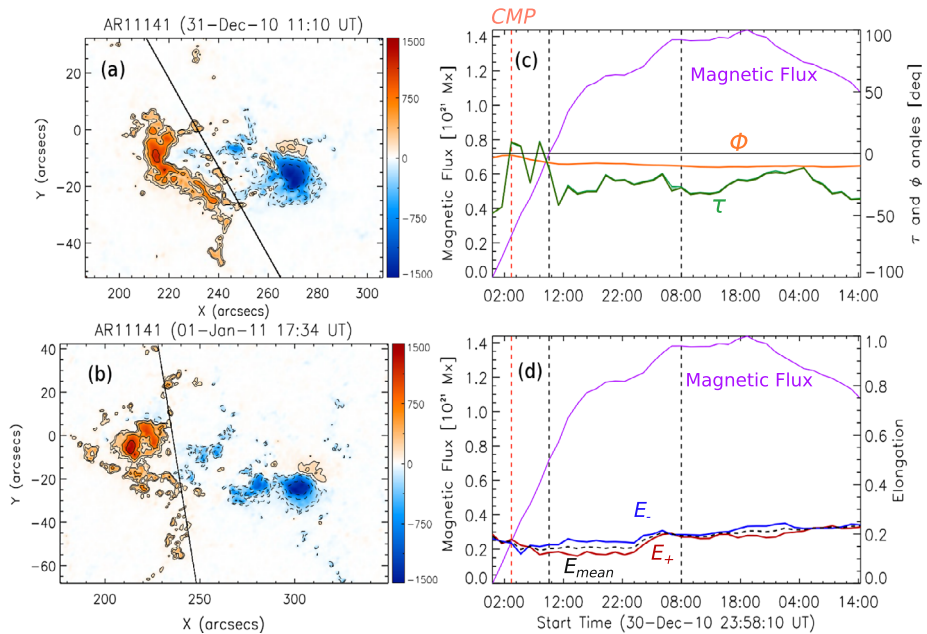


Figure 8 Emergence of AR 11141 observed by HMI. Panels a and b correspond to magnetograms at two different times. The continuous (dashed) lines are isocontours of the positive (negative) magnetic-field component normal to the photosphere, drawn for 100, 200, 500, 1000, and 1500 G (and the corresponding negative values). The red- and blue-shaded regions indicate positive and negative polarities, respectively. In these panels the horizontal (vertical) axis corresponds to the east–west (south–north) direction on the Sun. (c) Evolution of the magnetic flux (violet-continuous line), τ (green line), and the tilt angle (ϕ , orange line) as defined in Figure 2. (d) Elongation of the positive (negative) polarity with red (blue)-continuous line. The mean elongation is depicted with a black-dotted line. As a reference, we have added to this panel the evolution of the magnetic flux drawn in violet. The two vertical dashed-black lines mark the period of time in which we performed our computations, the orange vertical-dashed line indicates the AR central meridian passage (CMP). This AR has a very low magnetic flux, lower by a factor of six than the AR in Figure 4.

AR 10268 is a northern-hemisphere region that started to emerge on 21 January 2003 (Figure 6c). Two coherent emergences (maintaining a similar τ -value) are observed in the period. They are marked by the two vertical black dashed lines in Figure 6c. By around 9:35 UT on 25 January, a positive flux emergence at the North of the AR, accompanied by a less remarkable negative emergence nearby, decreased τ to low positive values, as shown in the accompanying movie, *i.e.* the inclination of the PIL changed drastically guided by these emergences (Figure 6b). Apart from this, the evolution of τ and ϕ closely follow the evolution expected in the mirror of Figure 1; the distance between these two curves remained approximately constant, as for AR 10547 (Figure 5c).

AR 10323 is a southern-hemisphere AR (S07) that presented a first emergence around 26 March; tongues were unclear at this stage, and τ fluctuated around zero. By 28 March at around 12:00 UT, a second emergence with clear positive twist was observed (Figure 7c). The value of τ started to increase and remained almost constant, except for a decrease between 31 March around 06:00 UT and the beginning of 1 April. During that period the emergence of positive and negative flux at the South of the positive polarity decreased the PIL inclination. Later, as the new negative polarity extended and merged with the main one, the value of τ increased and returned to the previous value. During this emergence period,

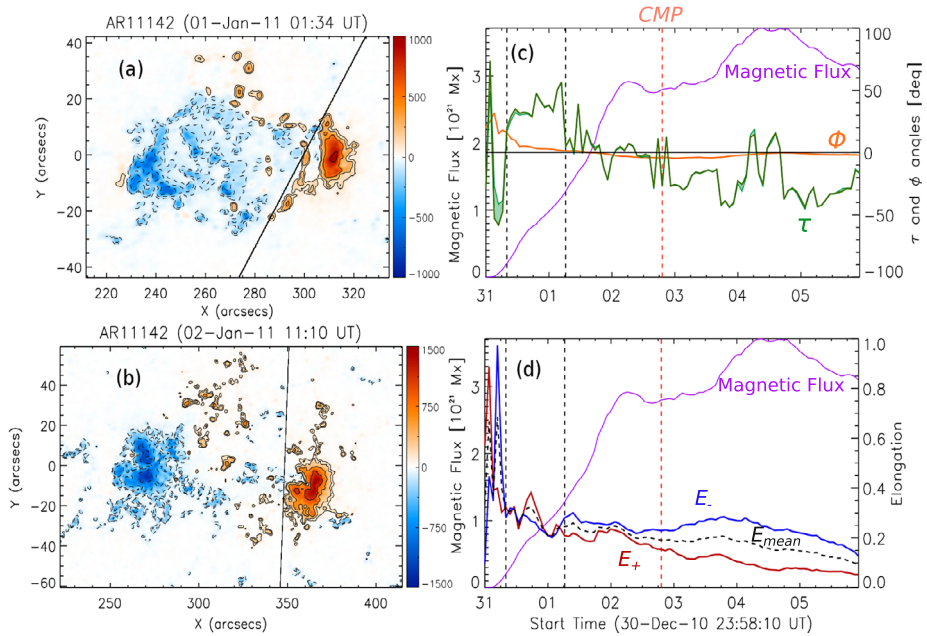


Figure 9 Emergence of AR 11142 observed by HMI. Panels a and b correspond to magnetograms at two different times. The continuous (dashed) lines are isocontours of the positive (negative) magnetic-field component normal to the photosphere, drawn for 100, 200, 500, 1000, and 1500 G (and the corresponding negative values). The red- and blue-shaded regions indicate positive and negative polarities, respectively. In these panels the horizontal (vertical) axis corresponds to the east–west (south–north) direction on the Sun. (c) Evolution of the magnetic flux (violet-continuous line), τ (green line), and the tilt angle ϕ (orange line) as defined in Figure 2. (d) Elongation of the positive (negative) polarity with red (blue)-continuous line. The mean elongation is depicted with a black-dotted line. As a reference, we have added to this panel the evolution of the magnetic flux drawn in violet. The two vertical dashed-black lines mark the period of time in which we performed our computations, the orange vertical-dashed line indicates the AR central meridian passage (CMP). This AR has a magnetic flux lower by a factor of two than the AR in Figure 4.

ϕ remained constant, indicating that the magnetic flux in the tongues was low and did not affect the AR tilt (Figure 7c).

The evolution of the elongation of the tongues in AR 10268 was affected by the two emergences, but finally it decreased, as expected in the AR flux emergence model (Figure 1d). For AR 10323 the elongation of the tongues remained approximately constant for the second flux emergence (Figure 7d). Summarizing, in these two examples the amount of magnetic flux has no significant effect on the detection of the tongues when using the evolution of τ in contrast to the elongation E .

4.4. Active Regions Observed by HMI

The next examples (Figures 8 and 9) correspond to two small bipolar ARs observed in late 2010 with HMI, when it was fully operational. To compare the results derived from both instruments and the influence of the instrument spatial resolution on our results, on one hand, we reduced the HMI cadence by taking one magnetogram every 96 minutes but keeping its spatial resolution and, on the other hand, reduced the HMI spatial resolution to match that of MDI. For these two experiments, the data were processed in the same way as for the MDI magnetograms.

In Figures 8a, b and 9a, b we show the results of the first experiment. It is difficult to see a long clear evolution of the magnetic tongues in both ARs because of their very low magnetic flux, which is contaminated by the background noise. The latter is more remarkable for AR 11142, in which τ shows strong fluctuations. However, it has a clear predominant sign, negative for AR 11141 and positive for AR 11142, which is evident during the main emergence phase (Figures 8c and 9c). For both ARs, the value of ϕ remains constant, indicating that the flux in the tongues is low enough to not affect the direction of the AR bipole vector. The elongation of the tongues is approximately constant for AR 11141, while it decreases in time for AR 11142. In this latter case the preceding polarity has a lower elongation than in the following one.

In summary, despite the increase in the spatial resolution (HMI images have four times higher resolution than those of MDI), the results related to the tongues are coherent with those of the previous examples. Finally, when decreasing the spatial resolution of HMI to MDI (results not shown), we found no significant change in the direction of the PIL and its evolution. The difference between the mean value of τ using the HMI spatial resolution and reducing it to MDI spatial resolution remains below 2° ; the same is true for the highest value of τ .

4.5. Example of an AR Without Significant Tongues

As a last example, Figures 10a, b illustrate the emergence of AR 10569. This is a southern-hemisphere (S11) region that appeared in March 2004. The magnetic flux in the AR reached its maximum in two days. During that period the sign of τ was only poorly defined, fluctuating around zero (Figure 10c), while ϕ remained almost constant. However, the elongation of the polarities suggests that tongues might have been present (Figure 10d), but not strong. From examining some individual magnetograms on late 3 March and the beginning of 4 March, we were able to identify magnetic tongues that correspond to a negative twist. This AR is one of the few cases in which the variation of τ is insufficient to determine the sign of the twist, and visual inspection is needed to identify the presence of tongues and their shape.

5. Active Region Properties Derived from Magnetic Tongues

5.1. General Definitions

To be able to compare observed ARs with different characteristics and reach some general conclusions, we used the average and highest values of the computed parameters. For instance, we defined $\bar{\tau}$ as the mean of τ calculated over a limited time period during the emergence, when the magnetic flux in the tongues dominates the background flux and the mixed (sea-serpent) polarities (see Section 4). We present below a histogram of its absolute value $[|\bar{\tau}|]$. We also defined $|\tau_{\max}|$ as the highest value of $|\tau|$ for the same period of time. Similarly, we introduced the mean tilt angle $[\bar{\phi}]$ and the absolute value of the largest difference between ϕ and $\phi_{\max \text{ flux}}$, where the latter is the bipole tilt at highest magnetic flux. The value $|\phi - \phi_{\max \text{ flux}}|_{\max}$ represents the largest departure from the estimated flux-rope axis. In the same way, we introduced the average and highest absolute values of the number of turns in half the emerging toroidal flux-rope model during the studied time period. After correcting for the influence of the AR tilt angle, these signed numbers become the parameters that we used as a measure of the observed AR twist (see Section 5.2). The results for the 41 ARs are listed in Table 1 of the [Appendix](#).

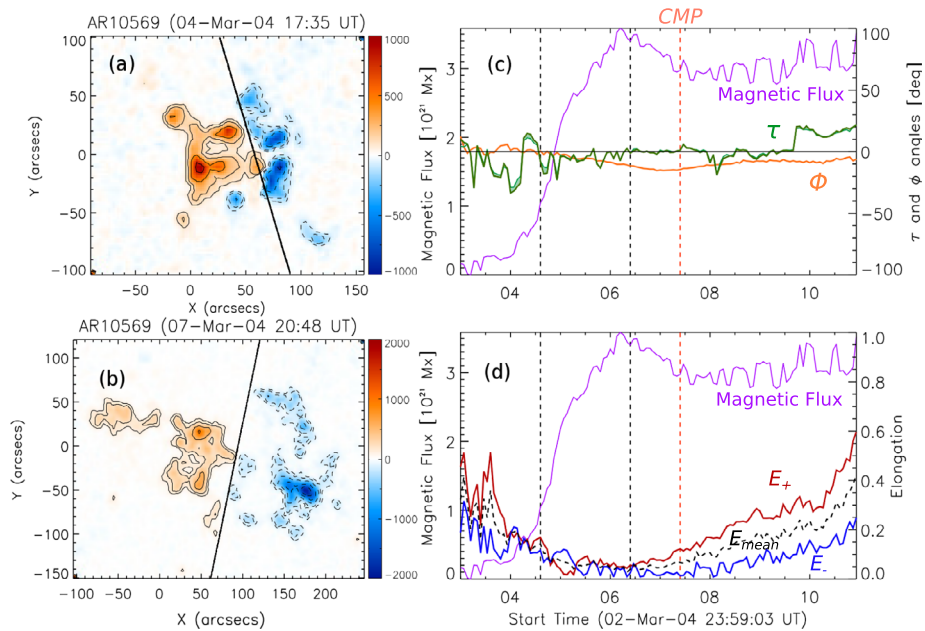


Figure 10 Emergence of AR 10569 observed by MDI. Panels a and b correspond to magnetograms at two different times. The continuous (dashed) lines are isocontours of the positive (negative) magnetic-field component normal to the photosphere, drawn for 100, 200, 500, 1000, and 1500 G (and the corresponding negative values). The red and blue-shaded regions indicate positive and negative polarities, respectively. In these panels the horizontal (vertical) axis corresponds to the east–west (south–north) direction on the Sun. (c) Evolution of the magnetic flux (violet-continuous line), τ (green line), and the tilt angle (orange line) as defined in Figure 2. (d) Elongation of the positive (negative) polarity with red (blue)-continuous line. The mean elongation is depicted with a black-dotted line. As a reference, we have added to this panel the evolution of the magnetic flux drawn in violet. The two vertical dashed-black lines mark the period of time in which we performed our computations, the orange vertical-dashed line indicates the AR central meridian passage (CMP). This AR has no significant magnetic tongues, but its magnetic flux is similar to that of the AR in Figure 9.

All of the values defined in the previous paragraph were computed only in the temporal ranges corresponding to the main flux emergence, as marked between the vertical-dashed lines in Figures 4–10. The criteria for selecting these intervals were the following: First, we identified the main phase of the emergence as the temporal interval during which the magnetic flux has a pronounced increase. Then, by direct inspection of the magnetograms, we refined the chosen interval by minimizing the effects of the background and of secondary emergences in the selected rectangles. In some cases, the background has a strong effect at the beginning of the AR emergence, which means that it affects the determination of the PIL inclination. For these cases we removed the first magnetograms until the AR polarities had gained enough strength to make the effect of the background negligible. Furthermore, during flux emergence, the known sea-serpent effect (Strous *et al.*, 1996; Pariat *et al.*, 2004) contaminates the determination of the PIL as it creates chains of minor polarities. In cases in which secondary emergences were observed (*e.g.* Figure 4), the structure of the ARs becomes increasingly complex, making the PIL determination unreliable. In these cases we included in the analysis only the main phase of the first emergence. This was done for the 41 analyzed ARs.

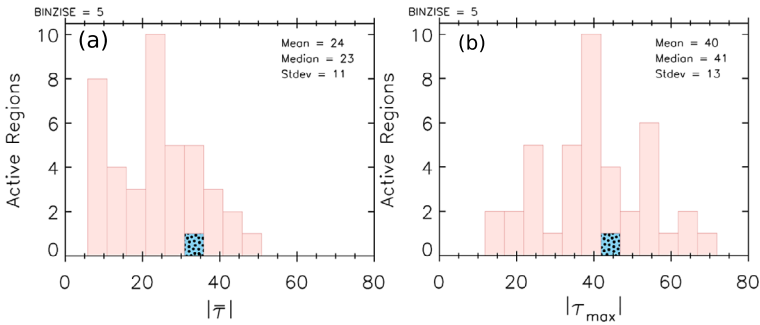


Figure 11 Histograms of the absolute values of (a) the mean of τ , $|\bar{\tau}|$, and (b) the maximum of τ , $|\tau_{\max}|$, for all of the studied ARs. The values of the mean, median, and standard deviation are shown as insets in both panels. The values of $|\bar{\tau}|$ and $|\tau_{\max}|$ for the AR-emergence model in Figure 1 ($N_t = 1$) are shown with a light blue rectangle with a black dotted pattern.

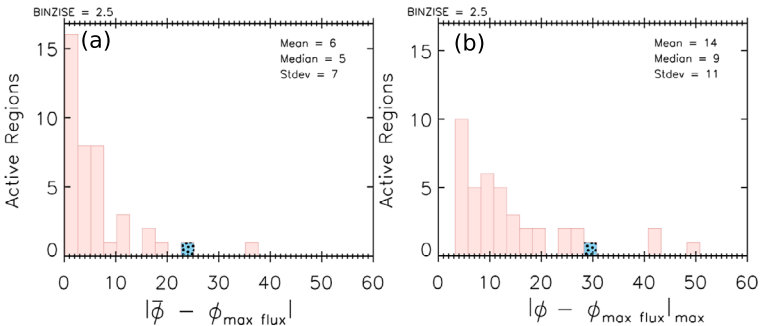


Figure 12 Influence of the tongues on the bipole rotation during the emerging phase. Histograms of (a) $|\bar{\phi} - \phi_{\max \text{ flux}}|$ and (b) $|\phi - \phi_{\max \text{ flux}}|_{\max}$, as defined in the text. The light-blue rectangle with a black-dotted pattern corresponds to our AR-emergence model shown in Figure 1 ($N_t = 1$).

5.2. Tongue Characteristics

In Figure 11 we show histograms of the absolute values of the mean and maximum τ [$|\bar{\tau}|$ and $|\tau_{\max}|$] for the 41 studied ARs. $|\bar{\tau}|$ (Figure 11a) is approximately 24° , in close correspondence with the median of the distribution. From Figure 11b, $|\tau_{\max}|$ has a mean value of 40° , with a median of 41° . Although the distribution of $|\tau_{\max}|$ is slightly more spread out because it depends on a single measurement for each AR, it looks more Gaussian than the distribution of $|\bar{\tau}|$. The values of $|\bar{\tau}|$ and $|\tau_{\max}|$ for the AR emergence model (light-blue rectangles in Figures 11a, b), shown in Figure 1, are slightly above the mean/median values for the observed ARs. This is a first indication that this simple model represents the typical behavior of τ for ARs during the emergence phase well.

The way in which the magnetic flux in the tongues can influence the variation of the AR tilt angle can be understood from Figure 12, where we plot the histograms of $|\bar{\phi} - \phi_{\max \text{ flux}}|$ and $|\phi - \phi_{\max \text{ flux}}|_{\max}$. We recall that $\phi_{\max \text{ flux}}$ corresponds to the tilt angle when the AR has reached its highest flux, *i.e.* in general when the bipole has fully emerged. It is clear from both histograms that for most of the cases studied, the magnetic flux in the tongues has only a weak influence on the AR tilt. This is evident from the mean values of the histograms (6° in Figure 12a and 14° in Figure 12b). However, a few active regions present values in the

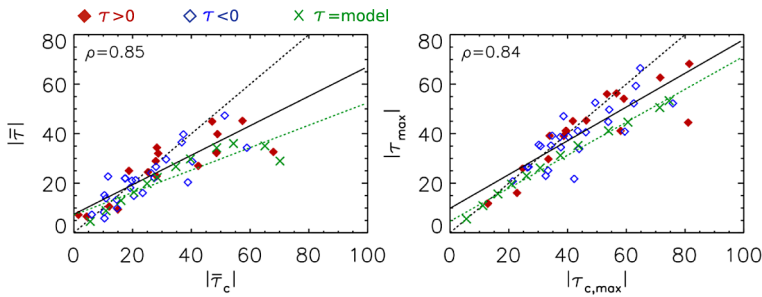


Figure 13 Correlation of (a) $|\bar{\tau}_c|$ with $|\bar{\tau}|$ and (b) $|\tau_{c,max}|$ with $|\tau_{max}|$ for all of the studied ARs. The black-dotted lines mark the equality of abscissa and ordinate. The black-continuous lines are the least-squares fits with a straight line to all of the data points, blue-open (red-filled) diamonds correspond to $\bar{\tau} < 0$ ($\bar{\tau} > 0$). The results from the analytical model (see the case $N_t = 1$ in Figure 1) are plotted with green crosses for $N_t = 0.05, 0.1, 0.15, 0.2, 0.25, 0.3, 0.4, 0.5, 0.75, 1, 2, 4$. The green-dotted lines are the least-squares fits with a straight line to all of the model points. They show a general tendency similar to the observations for a fraction of the ARs.

tails of the distributions. Moreover, although the values of $|\bar{\tau}|$ and $|\tau_{max}|$ for our emergence model remain close to the mean values for the observations, the magnetic flux in the tongues is much higher than in our observed cases; the light-blue rectangles with a black-dotted pattern in both histograms of Figure 12 are located at high values (this implies that the tongues affect the tilt in the model).

Since the magnetic tongues have an effect on the bipole tilt for some ARs, we defined a corrected tilt angle. We assumed that the flux rope is not rotating significantly during emergence, so that its axis direction can be inferred from the tilt angle when the tongues have significantly retracted and before another emergence or dispersion further modifies the bipole tilt. We selected the time of highest flux as that satisfying both conditions. Then, we defined the corrected angle $[\tau_c]$ as

$$\tau_c(t) = \tau(t) - \phi(t) + \phi_{\max \text{ flux}} \tag{5}$$

and computed an average $[\bar{\tau}_c]$ and a highest value $[|\tau_{c,max}|]$ as above for τ . Many ARs are found in the vicinity of the lines $\bar{\tau}_c = \bar{\tau}$ and $|\tau_{c,max}| = |\tau_{max}|$ (black-dotted lines in Figure 13). The dispersion around these lines is interpreted as an intrinsic rotation of the bipoles (e.g. due to the buffeting of the convective cells). However, a fraction of ARs have significantly higher values of $\bar{\tau}_c$ than $\bar{\tau}$; the same is true for the highest values. The least-squares fit of all of the data points with a straight line is found close to the results of our emerging model by varying the number of turns $[N_t]$ (black-continuous line and green crosses in Figure 13). This correspondence is closer for a fraction of the ARs. Again, this shows that this simple model describes typical ARs in terms of the PIL orientation during flux emergence well. A broad range of N_t values is needed to interpret the analyzed ARs.

Next, using the simple flux-rope model, we converted the measured τ_c -values into the number of turns present in half of the emerging torus using the relation

$$N_{t,c} = \frac{\tan \tau_c}{2} \tag{6}$$

derived in Appendix B of Luoni *et al.* (2011). This model has τ_c almost constant during most of the emergence phase (Figure 1) because the flux rope is uniformly twisted. This

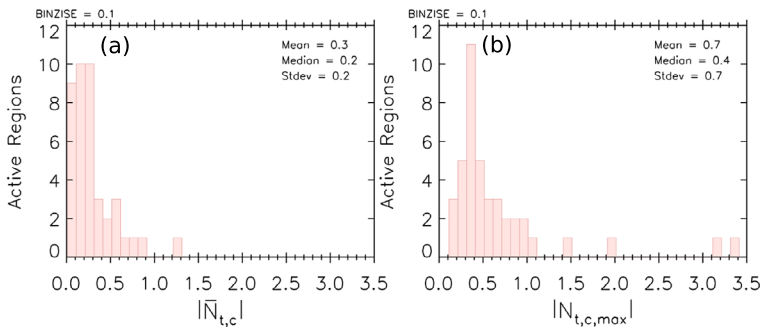


Figure 14 Histograms of $|\overline{N}_{t,c}|$ and $|N_{t,c,\max}|$ for all of the studied ARs (computed by replacing τ_c in Equation (6) by $|\overline{\tau_c}|$ and $|\tau_{c,\max}|$, respectively).

is rarely found in observed ARs, as shown in the examples of Figures 4–10. Then, we computed for the 41 ARs in our set two extreme values, $\overline{N}_{t,c}$ and $N_{t,c,\max}$, by replacing τ_c by $\overline{\tau_c}$ and $\tau_{c,\max}$, respectively, in Equation (6). Because of the dependence between $N_{t,c}$, which we used as a measure of the AR twist, and τ_c (shown by Equation (6)), the twist derived in the observed ARs is a monotonically increasing function of τ_c . This relationship is model dependent and can be tested by already developed numerical simulations of flux-rope emergence (see references in Section 1), as both τ_c and the number of turns can be estimated independently.

All of the values of $\overline{N}_{t,c}$, except one, are below unity, and the median is only 0.2 (Figure 14). Most ARs also have $N_{t,c,\max}$ below unity, and the median is only 0.4. This shows that the emerging part of the subphotospheric flux rope typically has a low amount of twist and that highly twisted flux ropes are rare. This is a constraint for models simulating the emergence of flux ropes and, even more, for those that place the flux rope formation at the bottom of the convective zone. Finally, the difference between the histograms of $\overline{N}_{t,c}$ and $N_{t,c,\max}$ is important because $\tau_c(t)$ typically evolves during the emergence. This is probably due to a variable twist across the flux-tube (in contrast to our simple model).

6. Conclusion

Magnetic tongues, which are attributed to the twist in the flux-tubes that form active regions (ARs), are generally observed during their emergence phase. In this article we analyzed how frequently tongues are seen in emerging ARs and how their presence affects the evolution of the photospheric-flux distribution and, therefore, the parameters that characterize simple bipolar ARs. With this objective, we selected all of the bipolar ARs that were observed to emerge on the solar surface over eight years, from January 2003 to January 2011. After applying several selection criteria (isolated ARs, low background flux, and emergence close to disk center) that were required so that the magnetic tongues could be observed without distortion, we obtained a set of 41 ARs. From this set, 39 cases were observed by MDI and two by HMI. Then, our set contained examples with high spatial resolution for which we obtained very similar results as with MDI spatial resolution (as expected, since tongues have length scales similar to those of ARs so that they do not require high spatial resolution to be observed).

Our new method for characterizing magnetic tongues consists of measuring the acute angle, which we called τ , between the photospheric inversion line (PIL) and the direction orthogonal to the main AR bipolar axis (Figure 2, Section 3.1). This angle $[\tau]$, for our simple emergence model, is a monotonically increasing function of the twist of the flux rope forming the active region and always has the same sign as its magnetic helicity. We designed an automatic procedure to determine the PIL location, which is based on minimizing the contribution of the magnetic flux that is located on the incorrect-sign side of the PIL after automatically subtracting the contribution of the strong-field regions since they are on the correct-sign side of the PIL (Section 3.2). In this sense, our numerical procedure can be applied systematically to the full extent of a bipolar AR. Our method is robust with respect to noise and the presence, or absence, of parasitic polarities since it is based on the minimization of an integral function computed over the AR magnetogram. Our algorithm is more versatile than the method used by Luoni *et al.* (2011) since in that article the PIL direction had to be determined by selecting the portion of the AR that had magnetic tongues. Furthermore, we computed τ taking into account the main AR bipolar axis at each time step, which is different from the method used by Luoni *et al.* (2011), where the direction of the bipolar axis was computed at the time of highest flux, a time that is difficult to define and requires the user's intervention. Hence our algorithm is more robust and less user dependent than that used by Luoni *et al.* (2011). Another extension of our procedure is that we can automatically compute the confidence interval within which τ varies.

The main aim of Luoni *et al.* (2011) was to show that the tongue pattern allows determining the sign of the magnetic helicity. For that purpose, most of the selected ARs were already studied in previous articles and the helicity sign was known. In the present study, our aim instead was to find out how frequent and how marked magnetic tongues are in emerging ARs. For that purpose we systematically selected, in a time period of eight years, all of the bipolar ARs where the emerging phase could be fully observed close to the central meridian passage. We found that 63 % of the ARs have an average absolute value of τ $[|\bar{\tau}|]$ larger than 20° (Figure 11), showing that most of the emerging ARs have clear magnetic tongues that indicate the emergence of a twisted flux-tube (see examples in Figures 4–9). Tongues are also present in most of the remaining 37 % of cases, but not necessarily during all of the emergence period. Indeed, only 10 % of emerging ARs have a maximum $|\tau|$ lower than 20° (see Figure 10). These cases have small magnetic tongues, and a careful study of the magnetogram time series is needed to identify or reject the presence of tongues. We conclude that the large majority of ARs are formed by the emergence of a twisted flux-tube (or several). This emergence is fragmented in the form of small sea-serpent-like flux tubes. Nevertheless, the large-scale pattern of the tongues, at the AR scale, indicates the presence of a coherent flux rope below the photosphere.

The azimuthal component of the flux-rope magnetic field is the origin of the observed magnetic tongues. This additional magnetic flux artificially rotates the magnetic bipole axis that is defined by the center of gravity of both AR polarities (in contrast with a real rotation of the flux rope). To quantify this effect, we investigated how the bipole tilt $[\phi]$ evolved during the emergence. For 83 % of the ARs, with respect to the value when the flux is highest, the mean change of ϕ is below 10° (Figure 12). We conclude that in most emerging ARs, magnetic tongues have only a weak effect on the AR tilt determined from the magnetograms. However, some ARs do have a large variation of the tilt, up to 50° .

We next estimated the orientation of the flux rope from the measured tilt when its magnetic flux is highest and the tongues have retracted. We corrected all ARs for the effect of the

magnetic tongues on the measured tilt, providing a corrected τ , called τ_c . Coherently with the results related to the tilt, $\tau \approx \tau_c$, within 10° , for most ARs. However, a fraction of ARs have $|\tau_c|$ significantly larger than $|\tau|$, in agreement with a simple model for the kinematic emergence of a uniformly twisted flux rope (Figure 13).

The measurement of τ_c allowed us to estimate the twist by comparison with our flux-rope model. We derived the equivalent number of turns $[N_{t,c}]$ present in half of the emerging-torus model. We found a low twist, since half of the emerging ARs have a mean $N_{t,c}$ below 0.2 and a maximum $N_{t,c}$ below 0.4. Only 12 % of ARs have a maximum $N_{t,c}$ above one turn. This means that while nearly all emerging ARs show a flux rope, the amount of twist in the emerging part is low. There are other methods to infer the degree of twist in emerging ARs, which can be more complex than our set of simple bipolar ARs, *e.g.* the computation of photospheric electric currents or the current helicity, which require vector magnetograms (Gosain, Démoulin, and López Fuentes, 2014; Zhang, 2001; Zhang *et al.*, 2012). Our method relies on determining a single acute angle during the earliest period of flux emergence and, therefore, has the advantage of giving a first quantitative estimate of the AR twist directly derived from line-of-sight magnetograms.

Our result for the low twist in the subphotospheric emerging part of a flux rope is coherent with the estimate of the magnetic-helicity injection found during the emergence phase of ARs and the helicity stored in the coronal field. The photospheric helicity flux was derived from the temporal evolution of magnetograms. Its sum over the emergence phase, normalized by the highest magnetic flux to the second power, provides an estimate of the number of turns (of an equivalent uniformly twisted flux-tube). These estimates range from a few times 0.01 to a highest value of just above 0.1 (Nindos, Zhang, and Zhang, 2003; Liu and Zhang, 2006; Jeong and Chae, 2007; LaBonte, Georgoulis, and Rust, 2007; Tian and Alexander, 2008; Yang, Zhang, and Büchner, 2009). The magnetic helicity contained at a given time in the coronal field can also be estimated from magnetic-field extrapolations of the photospheric magnetograms, using the force-free model that best fits the observed coronal loops. This provides an estimate independent of the helicity injection computed above. The equivalent number of turns typically ranges from 0.1 to 0.2 (Démoulin *et al.*, 2002; Green *et al.*, 2002; Mandrini *et al.*, 2005; Lim *et al.*, 2007).

We conclude that our results, in relation to $N_{t,c}$ estimated from the tongue shapes, are broadly compatible with the independent estimates of magnetic helicity that point to a low twist, well below one turn, for the full AR configuration. These observational results set severe constraints on the numerical models of emerging flux ropes and even more on those that study the crossing of the convective zone by flux ropes formed at its base. Although we used a simple model to estimate the twist from τ_c , the results of numerical simulations of emergence (see references in Section 1) can be analyzed as observations, and their τ_c -values can be directly compared. This would provide a direct test of these numerical results. Finally, another extension of this investigation is to analyze the relationship between the number of turns derived from our estimated τ_c -values (average and highest) and those inferred from force-free models of the coronal magnetic field for the same ARs.

Acknowledgments CHM and MLF acknowledge financial support from the Argentinean grants PICT 2012-0973 (ANPCyT), UBACyT 20020100100733 and PIP 2009-100766 (CONICET). CHM and MLF are members of the Carrera del Investigador Científico (CONICET). MP is a fellow of CONICET. CHM thanks the Paris Observatory for a one-month invitation.

Appendix

Table 1 The analyzed ARs and their computed parameters. Column one shows the NOAA AR number. Columns two to five list the values of $\bar{\tau}$, τ_{\max} , $\bar{\tau}_c$, and $\tau_{c,\max}$; all of these values are expressed in degrees. Finally, columns six and seven indicate the number of turns as defined in the text and computed using $\bar{\tau}_c$ and $\tau_{c,\max}$, respectively. All of the parameters are computed during the analyzed AR emergence period.

NOAA	$\bar{\tau}$ [deg]	τ_{\max} [deg]	$\bar{\tau}_c$ [deg]	$\tau_{c,\max}$ [deg]	$\bar{N}_{t,c}$	$N_{t,c,\max}$
10268	-34	-52	-59	-76	-0.8	-2
10274	32	41	49	58	0.6	0.8
10311	-21	-35	-20	-34	-0.2	-0.3
10319	-8.3	-21	-10	-21	-0.09	-0.2
10323	33	47	26	38	0.2	0.4
10344	11	41	12	39	0.1	0.4
10349	-13	-41	-15	-46	-0.1	-0.5
10381	-30	-39	-31	-40	-0.3	-0.4
10385	29	39	28	39	0.3	0.4
10391	-33	-53	-31	-51	-0.3	-0.6
10415	-15	-34	-20	-44	-0.2	-0.5
10440	-18	-39	-19	-38	-0.2	-0.4
10441	-22	-35	-17	-31	-0.2	-0.3
10445	-22	-35	-27	-38	-0.3	-0.4
10456	26	48	28	49	0.3	0.6
10488	7.4	15	-6.6	-25	-0.06	-0.2
10495	-47	-59	-51	-63	-0.6	-1
10547	-22	-41	-38	-54	-0.4	-0.7
10565	27	56	42	57	0.5	0.8
10569	-5.8	-23	-10	-33	-0.09	-0.3
10617	-7.3	-26	-6.1	-26	-0.05	-0.2
10664	33	45	68	81	1.2	3.2
10692	-20	-41	-39	-59	-0.4	-0.8
10727	-29	-52	-40	-63	-0.4	-1
10747	-23	-39	-6.2	-21	-0.05	-0.2
10828	45	68	57	81	0.8	3.3
10837	-14	-27	-11	-27	-0.1	-0.3
10879	-16	-25	-23	-33	-0.2	-0.3
10900	40	63	49	72	0.6	1.5
10955	27	53	21	45	0.2	0.5
10971	23	30	28	33	0.3	0.3
10987	6.6	26	4.4	25	0.04	0.2
11005	9.4	16	15	23	0.1	0.2
11007	-40	-66	-37	-65	-0.4	-1.1
11010	-22	-39	-18	-35	-0.2	-0.3
11024	-21	-45	-21	-54	-0.2	-0.7
11027	-9.9	-22	-15	-42	-0.1	-0.5

Table 1 (Continued)

NOAA	$\bar{\tau}$ [deg]	τ_{\max} [deg]	$\bar{\tau}_c$ [deg]	$\tau_{c,\max}$ [deg]	$\bar{N}_{t,c}$	$N_{t,c,\max}$
11043	45	54	47	59	0.5	0.8
11049	-15	-36	-10	-30	-0.09	-0.3
11141	-24	-41	-26	-43	-0.2	-0.5
11142	34	56	28	53	0.3	0.7

References

- Archontis, V., Hood, A.W.: 2010, Flux emergence and coronal eruption. *Astron. Astrophys.* **514**, A56. DOI.
- Berger, M.A.: 1984, Rigorous new limits on magnetic helicity dissipation in the solar corona. *Geophys. Astrophys. Fluid Dyn.* **30**, 79.
- Bernasconi, P.N., Rust, D.M., Georgoulis, M.K., Labonte, B.J.: 2002, Moving dipolar features in an emerging flux region. *Solar Phys.* **209**, 119. ADS. DOI.
- Bisoi, S.K., Janardhan, P., Chakrabarty, D., Ananthkrishnan, S., Divekar, A.: 2014, Changes in quasi-periodic variations of solar photospheric fields: precursor to the deep solar minimum in Cycle 23? *Solar Phys.* **289**, 41. ADS. DOI.
- Chandra, R., Schmieder, B., Aulanier, G., Malherbe, J.M.: 2009, Evidence of magnetic helicity in emerging flux and associated flare. *Solar Phys.* **258**, 53. DOI.
- Démoulin, P., Pariat, E.: 2009, Modelling and observations of photospheric magnetic helicity. *Adv. Space Res.* **43**, 1013. ADS. DOI.
- Démoulin, P., Mandrini, C.H., van Driel-Gesztelyi, L., Thompson, B.J., Plunkett, S., Kovári, Z., Aulanier, G., Young, A.: 2002, What is the source of the magnetic helicity shed by CMEs? The long-term helicity budget of AR 7978. *Astron. Astrophys.* **382**, 650. DOI.
- Emonet, T., Moreno-Insertis, F.: 1998, The physics of twisted magnetic tubes rising in a stratified medium: two-dimensional results. *Astrophys. J.* **492**, 804. DOI.
- Fan, Y.: 2001, Nonlinear growth of the three-dimensional undular instability of a horizontal magnetic layer and the formation of arching flux tubes. *Astrophys. J.* **546**, 509. ADS. DOI.
- Fan, Y.: 2009, Magnetic fields in the solar convection zone. *Living Rev. Solar Phys.* **6**, 4. ADS. DOI.
- Fan, Y., Fisher, G.H., Deluca, E.E.: 1993, The origin of morphological asymmetries in bipolar active regions. *Astrophys. J.* **405**, 390. DOI.
- Gosain, S., Démoulin, P., López Fuentes, M.: 2014, Distribution of electric currents in sunspots from photosphere to corona. *Astrophys. J.* Submitted. DOI.
- Green, L.M., López fuentes, M.C., Mandrini, C.H., Démoulin, P., van Driel-Gesztelyi, L., Culhane, J.L.: 2002, The magnetic helicity budget of a CME-prolific active region. *Solar Phys.* **208**, 43. DOI.
- Green, L.M., Démoulin, P., Mandrini, C.H., van Driel-Gesztelyi, L.: 2003, How are emerging flux, flares and CMEs related to magnetic polarity imbalance in MDI data? *Solar Phys.* **215**, 307. ADS. DOI.
- Hood, A.W., Archontis, V., MacTaggart, D.: 2012, 3D MHD flux emergence experiments: idealised models and coronal interactions. *Solar Phys.* **278**, 3. ADS. DOI.
- Hood, A.W., Archontis, V., Galsgaard, K., Moreno-Insertis, F.: 2009, The emergence of toroidal flux tubes from beneath the solar photosphere. *Astron. Astrophys.* **503**, 999. DOI.
- Jeong, H., Chae, J.: 2007, Magnetic helicity injection in active regions. *Astrophys. J.* **671**, 1022. DOI.
- Jouve, L., Brun, A.S., Aulanier, G.: 2013, Global dynamics of subsurface solar active regions. *Astrophys. J.* **762**, 4. DOI.
- Kusano, K., Maeshiro, T., Yokoyama, T., Sakurai, T.: 2004, The trigger mechanism of solar flares in a coronal arcade with reversed magnetic shear. *Astrophys. J.* **610**, 537. ADS.
- LaBonte, B.J., Georgoulis, M.K., Rust, D.M.: 2007, Survey of magnetic helicity injection in regions producing X-class flares. *Astrophys. J.* **671**, 955. DOI.
- Li, H., Schmieder, B., Song, M.T., Bommier, V.: 2007, Interaction of magnetic field systems leading to an X1.7 flare due to large-scale flux tube emergence. *Astron. Astrophys.* **475**, 1081. DOI.
- Lim, E.-K., Jeong, H., Chae, J., Moon, Y.-J.: 2007, A check for consistency between different magnetic helicity measurements based on the helicity conservation principle. *Astrophys. J.* **656**, 1167. DOI.
- Liu, J., Zhang, H.: 2006, The magnetic field, horizontal motion and helicity in a fast emerging flux region which eventually forms a delta spot. *Solar Phys.* **234**, 21. DOI.
- López Fuentes, M.C., Démoulin, P., Mandrini, C.H., van Driel-Gesztelyi, L.: 2000, The counterkink rotation of a non-Hale active region. *Astrophys. J.* **544**, 540. DOI.

- López Fuentes, M.C., Démoulin, P., Mandrini, C.H., Pevtsov, A.A., van Driel-Gesztelyi, L.: 2003, Magnetic twist and writhe of active regions. On the origin of deformed flux tubes. *Astron. Astrophys.* **397**, 305. DOI.
- Luoni, M.L., Démoulin, P., Mandrini, C.H., van Driel-Gesztelyi, L.: 2011, Twisted flux tube emergence evidenced in longitudinal magnetograms: magnetic tongues. *Solar Phys.* **270**, 45. ADS. DOI.
- MacTaggart, D.: 2011, Flux emergence within mature solar active regions. *Astron. Astrophys.* **531**, A108. DOI.
- Mandrini, C.H., Pohjolainen, S., Dasso, S., Green, L.M., Démoulin, P., van Driel-Gesztelyi, L., Copperwheat, C., Foley, C.: 2005, Interplanetary flux rope ejected from an X-ray bright point. The smallest magnetic cloud source-region ever observed. *Astron. Astrophys.* **434**, 725. DOI.
- Murray, M.J., Hood, A.W.: 2008, Emerging flux tubes from the solar interior into the atmosphere: effects of non-constant twist. *Astron. Astrophys.* **479**, 567. DOI.
- Murray, M.J., Hood, A.W., Moreno-Insertis, F., Galsgaard, K., Archontis, V.: 2006, 3D simulations identifying the effects of varying the twist and field strength of an emerging flux tube. *Astron. Astrophys.* **460**, 909. DOI.
- Nakwacki, M.S., Dasso, S., Démoulin, P., Mandrini, C.H., Gulisano, A.M.: 2011, Dynamical evolution of a magnetic cloud from the Sun to 5.4 AU. *Astron. Astrophys.* **535**, A52. ADS. DOI.
- Nindos, A., Zhang, J., Zhang, H.: 2003, The magnetic helicity budget of solar active regions and coronal mass ejections. *Astrophys. J.* **594**, 1033. DOI.
- Otsuji, K., Kitai, R., Ichimoto, K., Shibata, K.: 2011, Statistical study on the nature of solar-flux emergence. *Publ. Astron. Soc. Japan* **63**, 1047. ADS.
- Pariat, E., Aulanier, G., Schmieder, B., Georgoulis, M.K., Rust, D.M., Bernasconi, P.N.: 2004, Resistive emergence of undulatory flux tubes. *Astrophys. J.* **614**, 1099. DOI.
- Poisson, M., López Fuentes, M., Mandrini, C.H., Démoulin, P.: 2012, Magnetic tongues properties in solar active regions. *Bol. Asoc. Argent. Astron.* **55**, 147. ADS.
- Scherrer, P.H., Bogart, R.S., Bush, R.I., Hoeksema, J.T., Kosovichev, A.G., Schou, J., et al.: 1995, The solar oscillations investigation – Michelson Doppler imager. *Solar Phys.* **162**, 129. DOI.
- Schou, J., Scherrer, P.H., Bush, R.I., Wachter, R., Couvidat, S., Rabello-Soares, M.C., Bogart, R.S., Hoeksema, J.T., Liu, Y., Duvall, T.L., Akin, D.J., Allard, B.A., Miles, J.W., Rairden, R., Shine, R.A., Tarbell, T.D., Title, A.M., Wolfson, C.J., Elmore, D.F., Norton, A.A., Tomczyk, S.: 2012, Design and ground calibration of the Helioseismic and Magnetic Imager (HMI) instrument on the Solar Dynamics Observatory (SDO). *Solar Phys.* **275**, 229. DOI.
- Strous, L.H., Scharmer, G., Tarbell, T.D., Title, A.M., Zwaan, C.: 1996, Phenomena in an emerging active region. I. Horizontal dynamics. *Astron. Astrophys.* **306**, 947. ADS.
- Tian, L., Alexander, D.: 2008, On the origin of magnetic helicity in the solar corona. *Astrophys. J.* **673**, 532. DOI.
- Toriumi, S., Hayashi, K., Yokoyama, T.: 2012, Detection of the horizontal divergent flow prior to the solar flux emergence. *Astrophys. J.* **751**, 154. ADS. DOI.
- Valori, G., Green, L.M., Démoulin, P., Vargas Domínguez, S., van Driel-Gesztelyi, L., Wallace, A., Baker, D., Fuhrmann, M.: 2012, Nonlinear force-free extrapolation of emerging flux with a global twist and serpentine fine structures. *Solar Phys.* **278**, 73. ADS. DOI.
- van Driel-Gesztelyi, L., Green, L.M.: 2014, Evolution of active regions. *Living Rev. Solar Phys.* In press.
- van Driel-Gesztelyi, L., Petrovay, K.: 1990, Asymmetric flux loops in active regions. *Solar Phys.* **126**, 285. DOI.
- Vargas Domínguez, S., van Driel-Gesztelyi, L., Bellot Rubio, L.R.: 2012, Granular-scale elementary flux emergence episodes in a solar active region. *Solar Phys.* **278**, 99. ADS. DOI.
- Yang, S., Zhang, H., Büchner, J.: 2009, Magnetic helicity accumulation and tilt angle evolution of newly emerging active regions. *Astron. Astrophys.* **502**, 333. DOI.
- Zhang, H.: 2001, Formation of current helicity and emerging magnetic flux in solar active regions. *Mon. Not. Roy. Astron. Soc.* **326**, 57. DOI.
- Zhang, H., Moss, D., Kleorin, N., Kuzanyan, K., Rogachevskii, I., Sokoloff, D., Gao, Y., Xu, H.: 2012, Current helicity of active regions as a tracer of large-scale solar magnetic helicity. *Astrophys. J.* **751**, 47. DOI.