

Testing Helioseismic-Holography Inversions for Supergranular Flows Using Synthetic Data

D.E. Dombroski · A.C. Birch · D.C. Braun ·
S.M. Hanasoge

Received: 1 November 2011 / Accepted: 3 November 2012 / Published online: 7 December 2012
© The Author(s) 2012. This article is published with open access at Springerlink.com

Abstract Supergranulation is one of the most visible length scales of solar convection and has been studied extensively by local helioseismology. We use synthetic data computed with the Seismic Propagation through Active Regions and Convection (SPARC) code to test regularized-least squares (RLS) inversions of helioseismic-holography measurements for a supergranulation-like flow. The code simulates the acoustic wavefield by solving the linearized three-dimensional Euler equations in Cartesian geometry. We model a single supergranulation cell with a simple, axisymmetric, mass-conserving flow.

The use of simulated data provides an opportunity for direct evaluation of the accuracy of measurement and inversion techniques. The RLS technique applied to helioseismic-holography measurements is generally successful in reproducing the structure of the horizontal-flow field of the model supergranule cell. The errors are significant in horizontal-flow inversions near the top and bottom of the computational domain as well as in vertical-flow inversions throughout the domain. We show that the errors in the vertical velocity are due largely to cross talk from the horizontal velocity.

D.E. Dombroski · A.C. Birch (✉) · D.C. Braun
NWRA, Boulder, CO, USA
e-mail: birch@mps.mpg.de

D.C. Braun
e-mail: dbraun@cora.nwra.com

A.C. Birch · S.M. Hanasoge
Max-Planck-Institut für Sonnensystemforschung, 37191 Katlenburg-Lindau, Germany

S.M. Hanasoge
e-mail: hanasoge@mps.mpg.de

A.C. Birch
Georg-August-Universität, Institut für Astrophysik, 37077 Göttingen, Germany

S.M. Hanasoge
Department of Geosciences, Princeton University, Princeton, NJ 08544, USA

Keywords Interior, convection zone · Supergranulation · Helioseismology, inverse modeling · Helioseismology, direct modeling · Waves, propagation · Velocity fields, interior

1. Introduction

Wave travel times are influenced by the properties of the medium in which they propagate; helioseismic holography (Lindsey and Braun, 1990, 2000) can be used to measure travel-time shifts, and is therefore useful for probing the interior structure of the Sun (Gizon and Birch, 2005; Gizon, Birch, and Spruit, 2010).

Supergranulation is a visible pattern on the solar surface often interpreted as a scale of solar convection. Despite extensive research by local helioseismology, there remains substantial uncertainty regarding the characteristic scales and fundamental processes responsible for the creation and sustainment of supergranulation patterns (*e.g.* Gizon and Birch, 2005; Rieutord and Rincon, 2010).

Supergranulation cells were first detected by Hart (1954, 1956); observations and analysis of data over a period of five decades have revealed average cell sizes in the range 15–30 Mm (*e.g.* Hart, 1956; Leighton, Noyes, and Simon, 1962; Duvall, 1980; Hathaway, 1992; Hagenaar, Schrijver, and Title, 1997; De Rosa and Toomre, 2004; Hirzberger *et al.*, 2008), with discrepancies in estimated scale due largely to differences in analysis techniques. Similarly, direct inferences of the velocity field have produced a range of horizontal-flow estimates (*e.g.* Hart, 1954; Simon and Leighton, 1964; Hathaway *et al.*, 2002). Rieutord *et al.* (2010), motivated by observed scale-dependency in surface kinetic-energy distributions, performed a spectral analysis of velocities estimated using granule tracking and Doppler measurements. They measured a velocity of 300 m s^{-1} at a scale of 36 Mm. Estimating vertical velocity has proven more difficult due to the noise contribution and low signal strength, particularly near the boundaries of supergranulation cells (Rieutord and Rincon, 2010). Results from SOHO/MDI data (Hathaway *et al.*, 2002) and *Hinode*/SOT data (Rieutord *et al.*, 2010) produced estimates of 30 m s^{-1} . Duvall and Birch (2010) estimated cell-center vertical flow to be about 10 m s^{-1} using direct Doppler measurements averaged over 1100 supergranules.

Several theories have been advanced to explain the development of supergranulation flow patterns at the observed preferential scale, although confirmation or rebuttal of these theories is largely lacking. An early theory proposed by Simon and Leighton (1964) attributed supergranular scales to convective instability from the recombination of ionized helium. More recently, Rieutord *et al.* (2000, 2001) proposed a model whereby exploding granules trigger large-scale instability of the granular flow, leading to supergranulation. Ploner, Solanki, and Gadun (2000) used a 1D model to similarly show that the interaction and merging of individual granular plumes may determine supergranular scales. Rast (2003) demonstrated that large spatial and long temporal supergranular scales arise in a simplified advective model that simulates the interaction of many small-scale and short-lived granular down-flow plumes. Crouch, Charbonneau, and Thibault (2007) were able to simulate correlations between cell size and magnetic activity using a model based on a random-walk approximation to the dispersal and interaction of small-scale magnetic elements at the solar surface. Qualitatively, they found that this process produced supergranule-like spatial patterns.

Debate continues regarding the structure of supergranule flows below the solar surface (*e.g.* Duvall, 1998; Zhao and Kosovichev, 2003; Woodard, 2007; Sekii *et al.*, 2007), largely due to the difficulties associated with estimating relevant quantities using helioseismology (*e.g.* Gizon and Birch, 2005; Rieutord and Rincon, 2010). These challenges are compounded

by the sound-speed and density stratification, which effectively decrease resolution and signal-to-noise ratio with depth, making the detection of a return flow elusive. Kosovichev and Duvall (1997) first used the time–distance helioseismology technique (Duvall *et al.*, 1993) to make measurements of supergranular-flow patterns from Doppler measurements. Zhao and Kosovichev (2003) also used time–distance helioseismology to infer supergranule flow fields; they found that horizontal flows could be derived reliably within a few megameters of the surface, but that vertical flows remained uncertain. They determined supergranulation to be a relatively deep phenomenon with a full pattern depth of up to 15 Mm and a return flow measured below a depth of 5–6 Mm. Braun, Birch, and Lindsey (2004), using helioseismic holography, attributed the measured return flow to signal leakage, and concluded that supergranulation is a relatively shallow phenomenon. Woodard (2007) used a forward model to perform subsurface inversions of Doppler data; however detection was limited to 4–5 Mm below the photosphere. Jackiewicz, Gizon, and Birch (2008) used a novel 2 + 1D optimally localized averaging (OLA) method to study supergranulation in the top few Mm. Braun *et al.* (2007) and Zhao *et al.* (2007) used synthetic data from numerical simulations of wave propagation through supergranule-like flows to test the performance of helioseismic techniques. The former compared model travel times with those computed from synthetic observations using helioseismic holography. The latter computed inversions using time–distance helioseismology and compared the results to the modeled flows. Both studies documented limitations in the ability of the techniques to detect the full extent of the flow fields. Švanda *et al.* (2011) tested the OLA inversion technique of Jackiewicz *et al.* (2012) on synthetic travel times and showed improved ability to infer vertical-flow fields.

In this study, we simulate wave propagation through a simple kinematic model of a supergranule-flow pattern and make helioseismic-holography measurements from observations of the resulting velocity field. The aim is to test the quality of regularized least-squares (RLS; *e.g.* Zhao, Kosovichev, and Duvall, 2001; Kosovichev, 1996, in the context of local helioseismology) inversions and gain insight into the limitations of this commonly used technique in local helioseismology by comparing the calculations with a known, simulated flow field. We find that the RLS technique applied to helioseismic-holography measurements is able to infer some general features of the horizontal field, but fails to infer the vertical field throughout the domain. Errors in vertical-flow inversions have previously been attributed to cross-talk effects (*e.g.* Zhao *et al.*, 2007; Jackiewicz *et al.*, 2012); herein we show the individual contributions from the divergent flow that comprise these effects.

2. Simulations

2.1. Numerical Algorithm

We used the Seismic Propagation through Active Regions and Convection code (SPARC; Hanasoge *et al.*, 2006, 2008; Hanasoge and Duvall, 2006) to solve the three-dimensional linearized Euler equations in Cartesian geometry. The code computes derivatives in the vertical direction using sixth-order compact finite differences (Lele, 1992), while derivatives in the horizontal directions are computed spectrally with periodic boundaries. An absorbing sponge is used to damp wave reflection at the top and bottom boundaries (Hanasoge *et al.*, 2006).

Wave excitation is applied 200 km below the photosphere via a source term in the momentum equation (Hanasoge, Duvall, and Couvidat, 2007). The forcing is statistically uniform in the horizontal directions and Gaussian in the vertical direction with FWHM 200 km.

In the spectral domain, the forcing distribution is localized to within the wavenumber range $k = 0 - 2 \text{ rad Mm}^{-1}$ and has a frequency maximum at 3 mHz.

Two different 24-hour (solar time) simulation cases were performed. The first case used the supergranule model with velocity vector $\mathbf{v} = v_x \hat{\mathbf{x}} + v_y \hat{\mathbf{y}} + v_z \hat{\mathbf{z}}$, where x and y define the horizontal coordinate system and z defines vertical distance from the photosphere. The second simulation case used no background flows, which allowed for application of the “noise subtraction” technique in the analysis (Werne, Birch, and Julien, 2004).

2.2. Supergranulation Model

The static background model is a convectively stabilized (CSM_A: Schunker *et al.*, 2011) variant of Model S (Christensen-Dalsgaard *et al.*, 1996), which specifies the time-invariant components of the density [ρ], pressure [p], first adiabatic index [Γ_1], gravity [g], and sound speed [c_s]. The computational box is a 300^3 grid, spanning nonuniformly from $z_{\text{bot}} = -25 \text{ Mm}$ to $z_{\text{top}} = 2.5 \text{ Mm}$ in the vertical direction. The grid spans 100 Mm uniformly in the x - and y -directions.

We model a single supergranule with a simple axisymmetric mass-conserving flow (Figure 1) prescribed by the curl of a potential function

$$\rho \mathbf{v} = \nabla \times \mathbf{A}, \tag{1}$$

where, for the sake of simplicity, we assume that the potential is separable as

$$\mathbf{A} = A_\phi \hat{\phi} = \rho(z)h(z)F(r)\hat{\phi} \tag{2}$$

with functions $h(z)$ and $F(r)$ defining the vertical and radial dependence of the potential. The variables ϕ , r , and z denote the angular, radial, and vertical cylindrical coordinates, respectively. The formulation of Equation (1) is chosen so that mass conservation [$\nabla \cdot \rho \mathbf{v} = 0$] is automatically enforced. We chose the radial distribution $F(r)$ to be of the form

$$F(r) = J_1(kr)e^{-r/R}, \tag{3}$$

where J_1 is the first-order Bessel function of the first kind, $k = 2\pi/30 \text{ rad Mm}^{-1}$, and $R = 15 \text{ Mm}$. This formulation forces decaying reversal of flow direction with increasing radial distance from the axial center. This functional form is similar to the flow associated with the “average supergranule” as seen by, *e.g.*, Duvall and Hanasoge (2012).

From Equation (1), the radial and vertical mass-flux distributions, respectively, are

$$\rho v_r = -\frac{\partial A_\phi}{\partial z}, \tag{4}$$

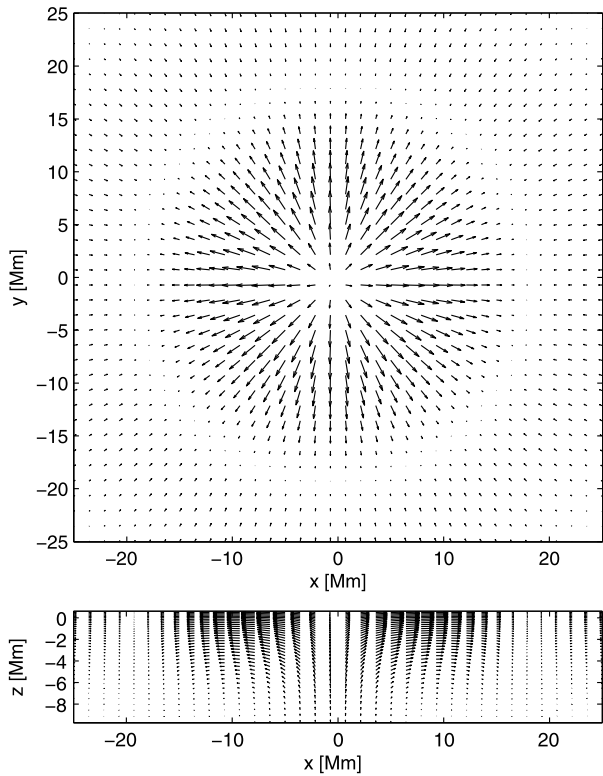
$$\rho v_z = \frac{1}{r} \frac{\partial}{\partial r} [r A_\phi]. \tag{5}$$

We chose to model the v_r component of flow as a sum of outflow [v_{out}] and inflow [v_{in}] Gaussian distributions, such that

$$v_r = v_{\text{out}} + v_{\text{in}} = \left[\alpha_1 \exp\left(-\frac{(z - z_1)^2}{D_1^2}\right) - \alpha_2 \exp\left(-\frac{(z - z_2)^2}{D_2^2}\right) \right] F(r), \tag{6}$$

where $\alpha_1 = 250 \text{ m s}^{-1}$, $\alpha_2 = 6.27 \text{ m s}^{-1}$, $z_1 = 0.2 \text{ Mm}$, $z_2 = -15 \text{ Mm}$, and $D_1 = D_2 = 5 \text{ Mm}$. Using mass conservation, the coefficient α_2 is calculated from the known density

Figure 1 Two-dimensional vector plots of the model supergranulation flow field. The top panel shows a horizontal slice through the horizontal-flow field at the photospheric level ($z = 0$) and the bottom panel shows a vertical slice through the flow field at the center of the supergranule ($y = 0$). The full computational domain extends from -50 Mm to $+50$ Mm in the horizontal directions, where $(x, y) = (0, 0)$ corresponds to the center of the supergranulation cell. Along the photospheric plane, the maximum horizontal and vertical velocities are 250 m s^{-1} and 20 m s^{-1} .



distribution ρ and v_{out} with chosen coefficient α_1 . The potential function A_ϕ can then be calculated directly from

$$A_\phi(r, z) = - \int_{z_{\text{bot}}}^z \rho(\zeta) v_r(\zeta) d\zeta, \tag{7}$$

In obtaining Equation (7), we set the integration constant equal to zero since we want the vertical velocity [v_z] to be zero at the lower boundary (see Equation (8) below).

With A_ϕ fully prescribed, the vertical flow [v_z] is calculated from Equation (5):

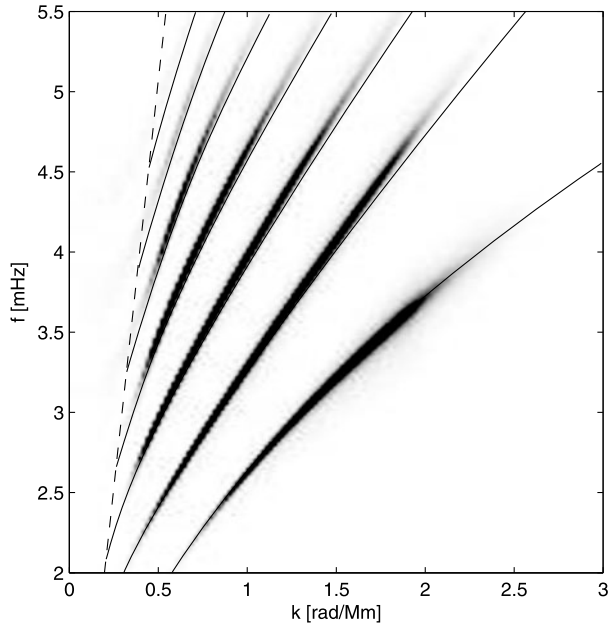
$$\rho v_z = \frac{A_\phi}{r} + \frac{\partial A_\phi}{\partial r} = \rho(z) h(z) \left[\frac{F(r)}{r} + \frac{\partial F(r)}{\partial r} \right]. \tag{8}$$

Note that due to the large density gradient with solar depth, outflow velocities near the photosphere are much larger than return-flow velocities at greater depth in order to conserve mass flux [$\rho \mathbf{v}$] (Figure 1).

3. Travel-Time Measurements

Starting from the vertical velocity taken at a height of 200 km, we used helioseismic holography (Lindsey and Braun, 2000) to measure center–quadrant local-control correlations. These correlations are analogous to center–quadrant time–distance correlations that have

Figure 2 Power spectrum for waves propagated through the CSM_A background model (Schunker *et al.*, 2011). The solid black lines denote the computed quiet-Sun Model S mode frequencies and the dashed line denotes the horizontal phase speed corresponding to the sound speed at the bottom of the computational box.



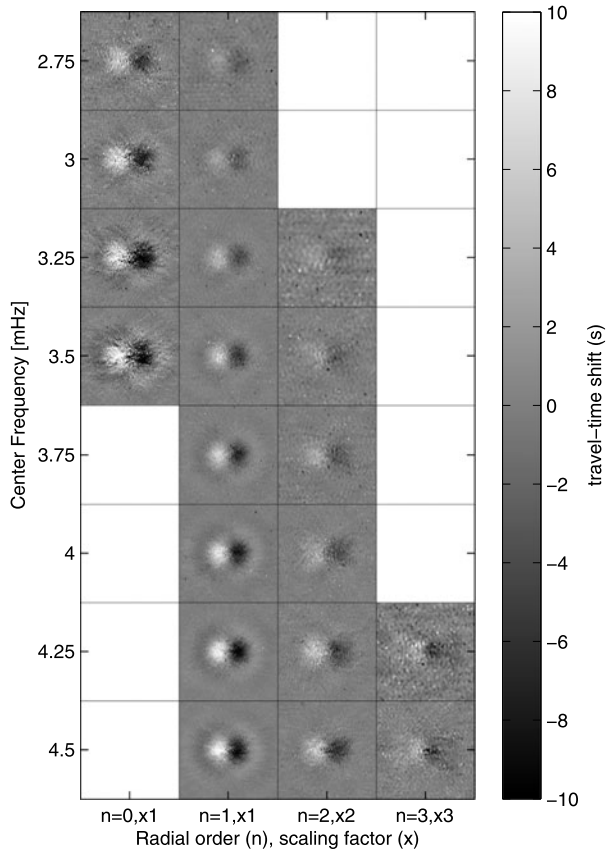
traditionally been used to measure time–distance travel times (*e.g.* Gizon and Birch, 2005; Gizon, Birch, and Spruit, 2010). We used the quadrant geometry and ridge filters described by Braun and Birch (2008). In addition to the ridge filters, we also applied band-pass frequency filters to isolate particular ranges in frequency. The filters had central frequencies of 2.75, 3.00, 3.25, 3.50, 3.75, 4.00, 4.25, and 4.50 mHz and all had widths of 0.25 mHz. We use $\delta\tau_x(\mathbf{r})$ ($\delta\tau_y(\mathbf{r})$) to denote x (y) direction center–quadrant travel-time shifts and $\delta\tau_{oi} = \delta\tau_{out}(\mathbf{r}) - \delta\tau_{in}(\mathbf{r})$ to denote out minus in center–quadrant travel-time shifts, where $\delta\tau_{out}(\mathbf{r})$ ($\delta\tau_{in}(\mathbf{r})$) represent travel-time shifts of the observed outgoing (incoming) waves.

Figure 2 shows the power spectrum of the vertical velocity at a height of 200 km above the photosphere in the simulation without any imposed flows. The resonant frequencies of the simulation are close to those from Model S. As a result, we apply the ridge filters and holography Green’s functions of Braun and Birch (2008) without modification. The travel-time measurements shown in Figures 3 and 4 were produced by subtracting the travel-time measurements from the simulation without flows (*i.e.* “noise subtraction”: Werne, Birch, and Julien, 2004).

Figure 3 shows center–quadrant travel-time differences [$\delta\tau_x$] for a range of radial orders and frequencies for the case where the synthetic data are produced from the supergranulation model. The flow produces travel-time shifts that generally decrease in amplitude with increasing radial order and increase in amplitude with increasing frequency (*i.e.* the travel-time shifts decrease with increasing horizontal phase speed). The spatial pattern is much the same in all cases and is what would be expected given the flow geometry in Figure 1.

Figure 4 shows the $\delta\tau_{oi}$ travel-time differences resulting from the supergranulation model. The general trend of the travel-time shifts with radial order and frequency band is consistent with that in Figure 3, although the $\delta\tau_{oi}$ measurements feature a larger signal-to-noise ratio.

Figure 3 Noise-subtracted center-quadrant travel-time differences $[\delta\tau_x(\mathbf{r})]$ calculated using ridge filters and 0.25 mHz wide band-pass frequency filters for the supergranulation simulation. The label at the bottom of each column denotes the radial order of the filter (e.g. $n = 0$ is the f -mode, $n = 1$ is the p_1 -mode, etc.) and the factor by which the mode data have been scaled (e.g. $\times 3$ means that the data have been multiplied by a factor of three).



4. Flow Inversions

The inverse problem is to estimate the flow field defined by the supergranule model given the travel-time measurements in Section 3. Here we show some example inversions in which we use the $\delta\tau_x$, $\delta\tau_y$, and $\delta\tau_{oi}$ maps to infer the subsurface flows $[\mathbf{v}]$.

We carry out the inversions of the travel-time maps with a noise level corresponding to what we would expect for an average over 100 supergranules measured for 24 hours each. To generate the input travel-time maps we start from the noise-subtraction travel-time maps (Figures 3 and 4) and add noise (computed from the simulations carried out in the flow-free reference model) with an amplitude reduced by $1/\sqrt{100}$.

We use kernels computed in the Born approximation using the method of Birch and Gizon (2007) with erratum Birch, Gizon, and Burston (2011), and account for the holography Green’s functions using the approach of Birch *et al.* (2011). The vector-valued kernel functions \mathbf{K} relate the flows in the interior to the travel-time maps,

$$\delta\tau_i(\mathbf{r}) = \iiint \mathbf{K}_i(\mathbf{r}' - \mathbf{r}, z) \cdot \mathbf{v}(\mathbf{r}', z) \, d\mathbf{r}' dz. \tag{9}$$

In the above equation, we have separate maps and kernel functions for each combination of ridge filter and frequency range.

Figure 4 Noise-subtracted center–annulus travel-time differences $[\delta\tau_{0i}]$ calculated using ridge filters and 0.25 mHz wide band–pass frequency filters for the supergranulation simulation. The label at the bottom of each column denotes the radial order of the filter (e.g. $n = 0$ is the f -mode, $n = 1$ is the p_1 -mode, *etc.*) and the factor by which the mode data have been scaled (e.g. $\times 3$ means the data have been multiplied by a factor of three). The signal-to-noise ratio of the travel-time differences are generally greater than those of $\delta\tau_x$ (Figure 3).

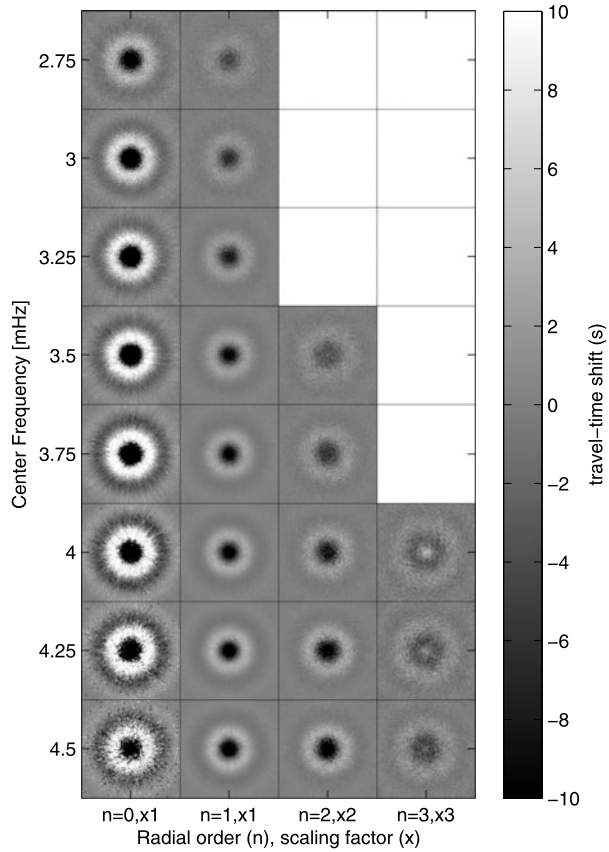


Figure 5 compares the measured travel-time shifts with the travel-time shifts that we would expect from Equation (9) evaluated for the known flow in the simulation. At low frequencies there is general, although not perfect, agreement. At high frequencies, especially 4.5 mHz, there are very significant differences. This disagreement may be a result of the simplifications made in the calculation of the sensitivity kernels, for example the neglect of the sponge layers in the simulation. We discuss this issue in more detail in Sections 5 and 6.

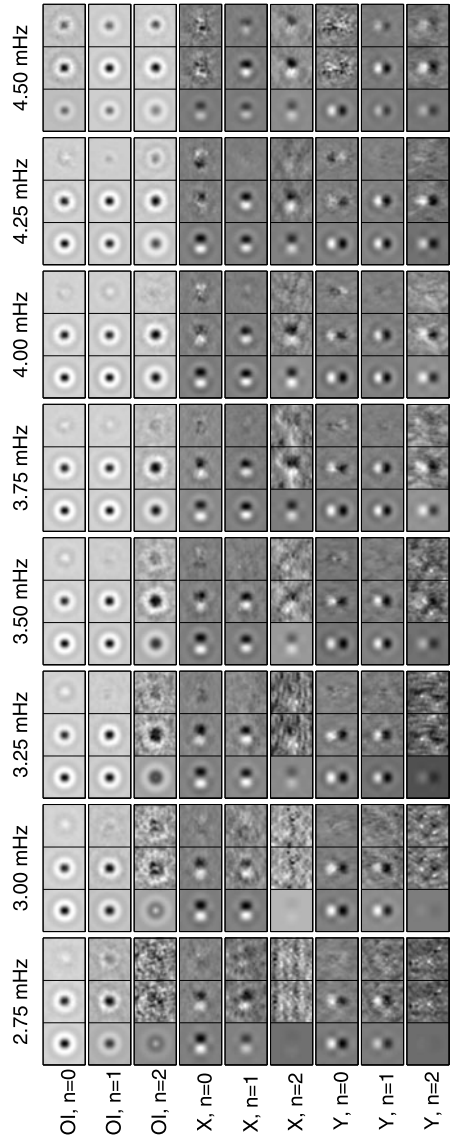
In order to discretize Equation (9), we parameterized the flow $[\mathbf{v}]$ as

$$\mathbf{v}(\mathbf{r}, z) = \sum_{j=1}^N \sum_{\mathbf{k}} \mathbf{a}_j(\mathbf{k}) \phi_j(z) e^{i\mathbf{k}\cdot\mathbf{r}}, \tag{10}$$

where the sum over j is over a total of N basis functions $[\phi_j(z)]$ and the sum over \mathbf{k} is a two-dimensional inverse FFT on the grid that the travel-time maps are measured on (the simulation domain is periodic; as a result, the travel-time maps are periodic as well). Here we choose the basis functions $[\phi_j(z)]$ to be ones when $z_j < z \leq z_{j+1}$ and zero otherwise. The points z_j consist of a grid of 56 points that are equally spaced in acoustic depth and cover the range from 0.5 Mm above the photosphere to 10 Mm below the photosphere. The grid spacing in k -space is $h_k = 0.063 \text{ rad Mm}^{-1}$.

We used the MCD approach (Jacobsen *et al.*, 1999) to split the full inversion problem into small one-dimensional (z -only) inversion problems at each horizontal wavenum-

Figure 5 Travel-time measurements compared with the expectations from a forward model based on the true flow in the simulation (Equation (9)). Each panel corresponds to a particular combination of frequency filter, radial order, and measurement geometry. The three images in each panel contain the forward model associated with the true flow (left), the measurement from the simulation (middle), and the residual (right), respectively. As discussed in the text, the forward model becomes less accurate at high frequencies. The maps have been smoothed with a Gaussian filter ($\sigma = \text{ten pixels}$) to more clearly elucidate the differences, and the panes are scaled independently.



ber. These problems we solved using RLS (*e.g.* Zhao, Kosovichev, and Duvall, 2001; Kosovichev, 1996, in the context of local helioseismology) with a regularization term given by the depth integral (at each horizontal wavevector \mathbf{k}) of the quantity $v_x^2 + v_y^2 + 10v_z^2$; the factor ten was chosen to reflect the preconception that vertical velocities are on average smaller than horizontal flows. Following Couvidat *et al.* (2005), we used a \mathbf{k} -dependent regularization parameter with $\lambda^2 = \lambda_1^2 + \lambda_2^2 \|\mathbf{k}\|^2$, where (λ_1, λ_2) are fixed parameters. As the regularization parameters are increased, the amplitude of the large-scale flow in the inversion result is reduced. We chose the parameters by inspection for each inversion based on a compromise between the desire to average out small-scale noise and the goal of retain-

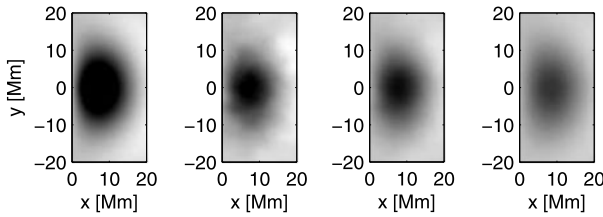


Figure 6 Demonstration of different regularization applied to the v_x inversion with corresponding decrease in resolved structure. The left panel shows the true v_x at $z = -0.8$ Mm. From left to right, the remaining panels show the inversion results for v_x for regularization parameters $(\lambda_1^2, \lambda_2^2/h_x^2) = (1.0 \times 10^{-8}, 5.66 \times 10^{-5}) \text{ Mm}^{-1} (\text{m s}^{-1})^{-2}$ (second panel from left), $(\lambda_1^2, \lambda_2^2/h_x^2) = (3.24 \times 10^{-8}, 1.76 \times 10^{-4}) \text{ Mm}^{-1} (\text{m s}^{-1})^{-2}$ (second panel from right), $(\lambda_1^2, \lambda_2^2/h_x^2) = (1.76 \times 10^{-7}, 9.31 \times 10^{-4}) \text{ Mm}^{-1} (\text{m s}^{-1})^{-2}$ (right panel), where $h_x = 1/3$ Mm is the grid spacing. The upper (lower) bound on the color scale in each panel is 150 (-50) m s^{-1} , with black (white) corresponding to positive (negative) values.

ing the large-scale flow features. Figure 6 shows a comparison of different regularization parameters applied to an inversion result for a portion of the v_x velocity field.

The inversion results presented herein reflect an estimate of the mean flow averaged over 100 supergranules for a 24-hour window. Application to real data necessitates consideration of the effective averaging window relative to the time scale over which the coherent structure evolves; a typical supergranule lifetime is estimated to be a day or more (Worden and Simon, 1976; Hinzberger *et al.*, 2008).

5. Results

Figures 7 and 8 show inversion results using all available $n = 0$, $n = 1$, and $n = 2$ measurements for $(\lambda_1^2, \lambda_2^2/h_x^2) = (3.24 \times 10^{-8}, 1.69 \times 10^{-4}) \text{ Mm}^{-1} (\text{m s}^{-1})^{-2}$ compared to the true v_x and v_z velocity components in the supergranule simulation, respectively. The structure of the v_x -inverted fields in Figure 7 shares qualitative agreement with the true flow, although misses the signal at the top and bottom (below about $z = -4$ Mm) of the physical domain. The underestimation of flow magnitude in the lower layers is consistent with prior work (*e.g.* Zhao, Kosovichev, and Duvall, 2001). The v_z inversion in Figure 8 fails to qualitatively capture the true flow throughout the physical domain. As we will discuss later, this is due to cross-talk effects between components of the velocity.

We tested the importance of including the $n = 2$ measurements by recomputing the inversions shown in Figures 7 and 8 using only the $n = 0$ and $n = 1$ measurements. There was no discernible visual difference in the inversion results for the horizontal and vertical velocity due to exclusion of the $n = 2$ measurements, which indicates that the RLS technique is relatively insensitive to the addition of higher radial-order measurements.

We tested the effect of noise in the measurements by recalculating the flow inversions using only the $n = 0$ and $n = 1$ measurements shown in Figures 3 and 4, which excludes the noisiest measurements (*i.e.* the whited-out boxes in the grid in Figures 3 and 4) that were included in the inversion calculations shown in Figures 7 and 8. There was no discernible visual difference in the inversion results for the horizontal and vertical velocity due to exclusion of the noisiest measurements, which supports the conclusion that the RLS technique is relatively insensitive to changes in the number and quality of measurements used in the inversion calculations.

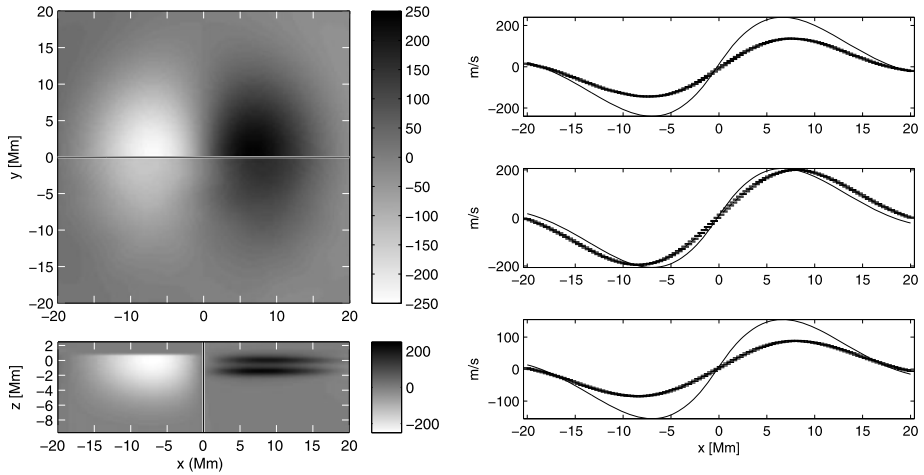


Figure 7 Result of helioseismic inversion for the x -component of the flow in the supergranule simulation using all available $n = 0$, $n = 1$, and $n = 2$ measurements. The top-left plot compares the true (top panel) and inverted (bottom panel) $v_x(x, y)$ flow at $z = -0.8$ Mm. The bottom-left plot compares the true (left panel) and inverted (right panel) $v_x(x, z)$ flow at $y = 0$ Mm. The plots on the right compare the centerline true (solid line) and inverted (dashed line with error bars) v_x -velocity at $z = -0.8$ Mm (top panel), $z = -2.0$ Mm (middle panel), and $z = -3.2$ Mm (bottom panel). The horizontal axes are cropped relative to the full computational domain. The inversion produces velocity magnitudes that are comparable to the true signal, however, misses the velocity signal at the top and lower portion of the domain.

We calculated center-quadrant travel-time differences from Equation (9) using the kernels and the inferred flow from Figures 7 and 8 and compared these to the measurements from the simulation. Figure 9 shows these comparisons and the calculated residual (difference between the two) for every combination of frequency filter, radial order, and measurement geometry. There is generally good correspondence between the perturbations in the $n = 0$ and $n = 1$ measurements; however, some of the $\delta\tau_x$ and $\delta\tau_y$ measurements, as well as all of the $n = 2$ measurements, contain significantly more noise. In some of the higher-frequency measurements, there is noticeable structure in the residual. This may be due to inaccuracies in the kernels (see Figure 5). We tested the sensitivity of the inversion to the high-frequency measurements by repeating the inversion using the same regularization parameters, but with the measurements at 4.25 mHz and 4.5 mHz removed. The main impact of removing these measurements was a reduction in the amplitude of the inferred vertical flow by about a factor of four.

Our findings are generally consistent with those of Zhao *et al.* (2007), who used the time-distance method and kernels computed from the ray approximation to perform inversions of simulated supergranule-scale convection. They were able to obtain reasonable inversion results only down to about 4 Mm below the surface, although they credit this to a limit in the largest annulus radius used. Here, the sensitivity functions for many of the travel-time measurements extend well below $z = -4$ Mm. This suggests that, with a sufficiently small noise level, it will be possible to detect flows below this depth (although with a spatial resolution that decreases with increasing depth). The structure of the horizontal-velocity inversion results can be better explained by observing the form of the sensitivity kernels. Figure 10 contains a vertical slice through the v_x inversion (left-most panel) and horizontally integrated $\delta\tau_x$ kernels grouped by radial order and frequency, and normalized by the rms noise level. The $n = 0$ kernels have a single band of sensitivity with a maximum located in

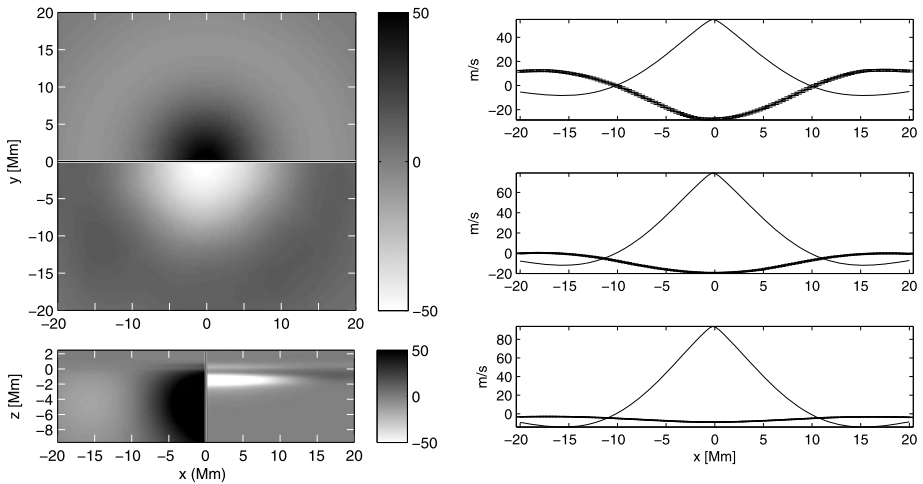


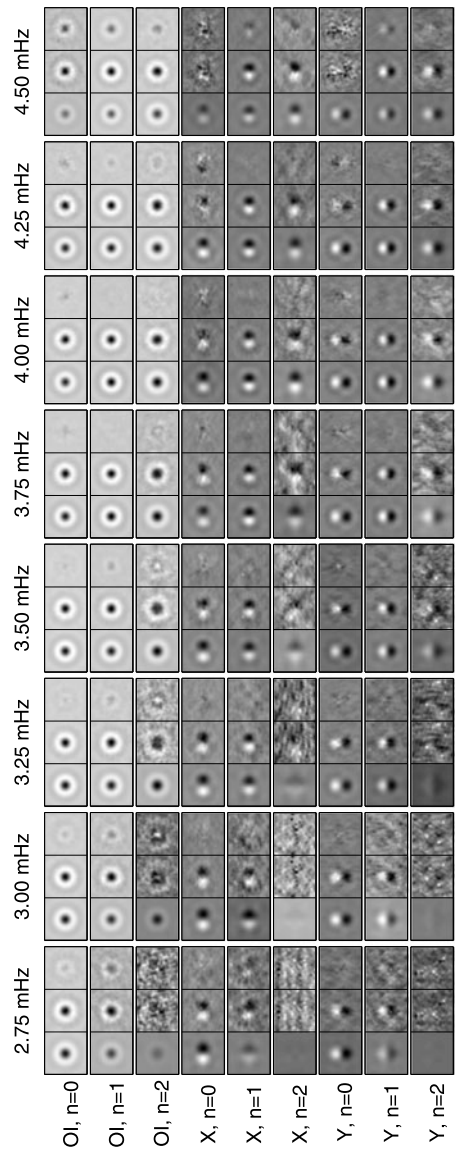
Figure 8 Result of helioseismic inversion for the z -component of the flow in the supergranule simulation using all available $n = 0$, $n = 1$, and $n = 2$ measurements. The top-left plot compares the true (top panel) and inverted (bottom panel) $v_z(x, y)$ flow at $z = -0.8$ Mm. The bottom-left plot compares the true (left panel) and inverted (right panel) $v_z(x, z)$ flow at $y = 0$ Mm. The plots on the right compare the centerline true (solid line) and inverted (dashed line with error bars) v_z -velocity at $z = -0.8$ Mm (top panel), $z = -2.0$ Mm (middle panel), and $z = -3.2$ Mm (bottom panel). The horizontal axes are cropped relative to the full computational domain. The inversion fails to qualitatively capture the true v_z flow throughout the physical domain. As we will discuss later, this is due to cross-talk effects between signals.

between 0 and -1 Mm. The $n = 1$ kernels have two regions of sensitivity which explains why the v_x inversion has two local maxima in the vertical direction. The $n = 2$ kernels have several regions of sensitivity; however, inclusion of the $n = 2$ measurements did not significantly effect the performance of the inversions because the signal-to-noise ratio of the $n = 2$ measurements is about a factor of two lower than that of the $n = 0$ and $n = 1$ measurements (Figure 4).

Figure 11 shows the averaging kernel that relates the inferred v_x to the true x -component of the velocity. The RLS inversion procedure is able to produce reasonably localized x -component averaging kernels with minimal leakage outside the target region.

Zhao *et al.* (2007) discuss the influence of cross talk on the inversions for the vertical velocity. Specifically, they describe a region just below the photosphere where the v_z inversion is of the incorrect sign. We find a similar phenomenon in our results, illustrated by the band of negative vertical velocity near $z = 0$ Mm (Figure 8). Here we will use the notation v_{ij} to denote the contribution of the j -component of the (known) model velocity to the inversion result for the i -component of the velocity; computing each of the v_{ij} involves the horizontal convolution of the appropriate averaging kernel with a particular component of the known model velocity (see, *e.g.*, Jackiewicz, Gizon, and Birch, 2008, for examples). Figure 12 shows the contributions of each of the components of the model flow to the inferred vertical flow (*i.e.* v_{zx} , v_{zy} , v_{zz}). The contribution of the x - and y -components of the true flow to the inferred vertical flow are as large as the contribution from the true vertical flow. The sum of these velocities ($v_{tot} = v_{zx} + v_{zy} + v_{zz}$) is qualitatively similar to the vertical flow inferred from the inversion. If the kernels were exactly correct and there was no noise then v_{tot} would be identical to the inferred vertical flow. This computation highlights the importance of controlling the cross talk in inversions for veloc-

Figure 9 Travel-time measurements calculated from the forward model compared to measurements from the simulation. Each panel corresponds to a particular combination of frequency filter, radial order, and measurement geometry. The three images in each panel contain the forward model associated with the inversion result (left), the measurement from the simulation (middle), and the residual (right), respectively. All of the $n = 0$ and $n = 1$ measurements generally reflect the structure of the model supergranule flow; the $n = 2$ measurements reflect a significant noise contribution. For all radial orders, the $\delta\tau_x$ and $\delta\tau_y$ measurements contain more noise than the $\delta\tau_{oi}$ measurements. The maps have been smoothed with a Gaussian filter ($\sigma = \text{ten pixels}$) to more clearly elucidate the differences, and the panes are scaled independently.



ity (this has been achieved using OLA inversions by Jackiewicz, Gizon, and Birch, 2008; Švanda *et al.*, 2011).

6. Discussion

We computed RLS inversions from travel-time measurements of simulated data created by numerically propagating waves through a simple supergranule-like flow field. The benefit of this approach is the opportunity for comparison with a known flow field for direct evaluation of the performance of the measurement and inversion techniques. Furthermore, the use of

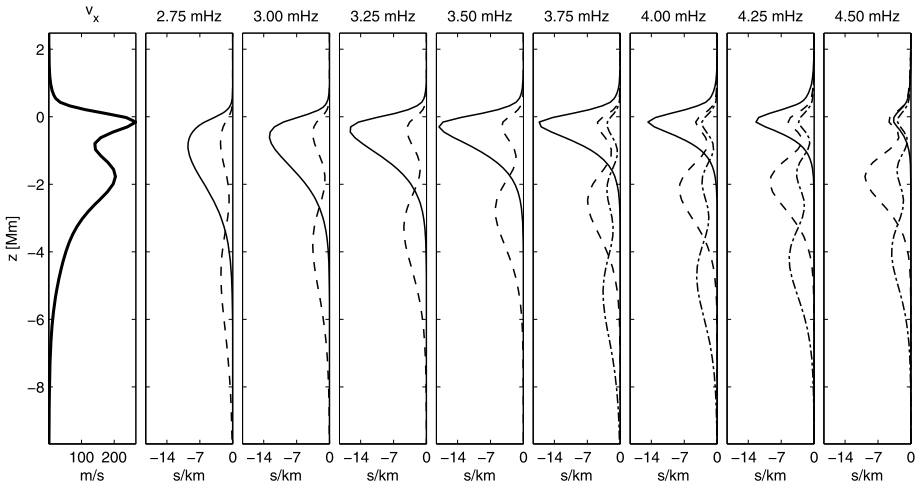


Figure 10 Horizontally integrated $\delta\tau_x$ kernels grouped by radial order and frequency, normalized by their respective rms noise level. Shown are $n = 0$ kernels (solid lines), $n = 1$ kernels (dashed lines), and $n = 2$ kernels (dot-dashed lines). The left-most panel shows a slice through the v_x -inversion result for reference. The figure demonstrates that the lobed nature of the v_x -inversion is due to the form of the kernels, which exhibit localized minima and maxima as a function of z . Furthermore, the sensitivity of the $n = 2$ kernels is generally less than the $n = 0$ and $n = 1$ kernels, which means that use of higher radial-order measurements in the inversion calculations will have decreasing impact on the result.

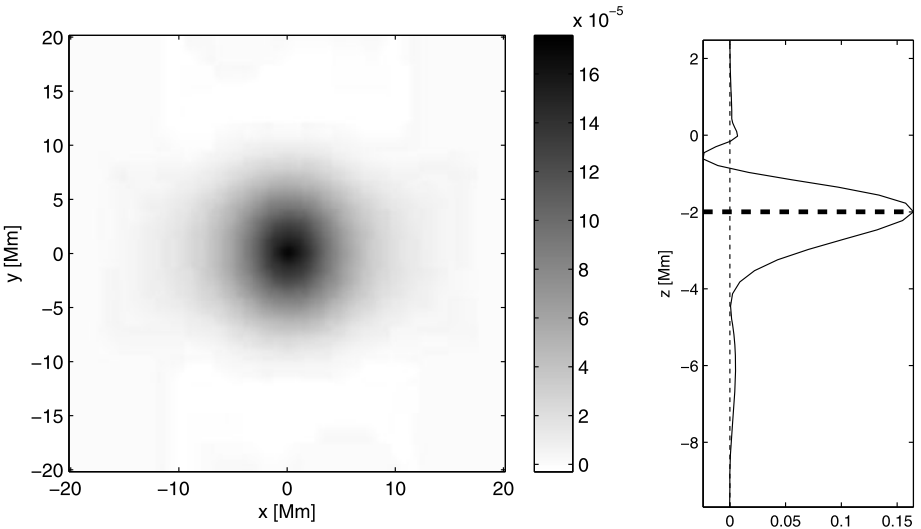
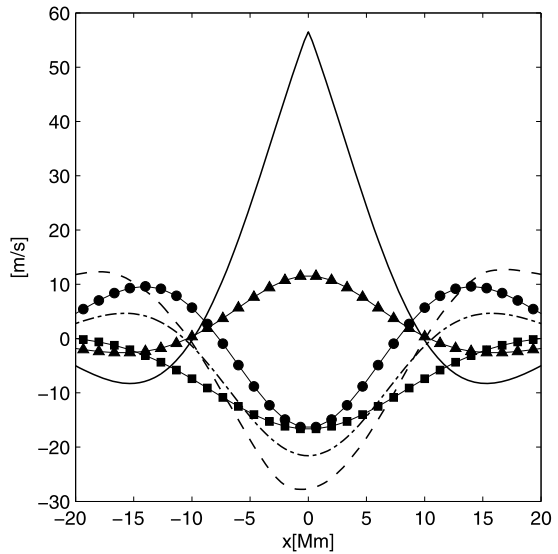


Figure 11 Averaging kernel for the v_x inversion for $z = -2.0$ Mm. The left plot shows the two-dimensional slice through the kernel at $z = -2.0$ Mm and the right plot shows the horizontally integrated vertical distribution of the averaging kernel.

simulated data allows for isolation of complicating effects. For instance, here travel-time differences are due solely to the supergranule flow; travel-time differences calculated from observational solar data contain the effects of many more physical variables.

Figure 12 Convolutions between the z -directional kernel and components of the model flow [v_{zx} , squares; v_{zy} , circles; v_{zz} , triangles], the summation of the convolved components [$v_{\text{tot}} = v_{zx} + v_{zy} + v_{zz}$, dot-dashed line], the inversion result [v_z inv, dashed line], and the model supergranule flow [v_z sim, solid line]. The v_{zx} - and v_{zy} -components have a large effect on the calculation of the total signal [v_{tot}], which demonstrates that much of the error in the v_z -inversion can be attributed to cross-talk effects.



We found that the inversion of the v_x - and v_y -velocity shared general features of the true flow reasonably well down to a depth of about 4 Mm below the surface. The inversion of the vertical velocity performed poorly throughout the domain, particularly near the surface where the computations produced a result that was of incorrect sign.

Underestimation of large-scale signal strength may be attributed to choice of regularization, which averages out noise but also causes some loss of flow amplitude. We tested the inversions over a broad range of regularization parameters, and the results presented here reflect the best scenarios.

We found the inversions, and hence the averaging kernels, to be relatively unresponsive to an increase in the number of input travel-time maps or to exclusion of noisy travel-time maps. This is a credit to the capability of the RLS technique in minimizing the effects of noise; however, the significant error in the inversion results suggests that the forward modeling is inadequate.

The sensitivity kernels relate variations in travel-time shifts to variations in the solar model; capturing this sensitivity accurately is dependent on making appropriate assumptions regarding the physical state (in our case, the simulated state) and the measurement procedure (*e.g.* Gizon and Birch, 2002; Birch, Kosovichev, and Duvall, 2004). As a test of the kernels, we convolved the resulting averaging kernels with the components of the true supergranule flow field, and compared these results with the respective inversion results. We found that the convolutions contained qualitatively the same structure (and hence comparable errors) as the inversion results.

There is very little sensitivity to flows above the photosphere because only waves of frequency comparable to the acoustic cutoff frequency (about 5.5 mHz) sample this region. The calculation of the kernels uses a zero Lagrangian-pressure-perturbation upper boundary condition, an assumption that is likely not accurate for high-frequency waves. Furthermore, the simulation uses absorbing sponges at the top and bottom boundaries, which may affect the wave dynamics significantly differently from what is accounted for in the kernel calculations. Perhaps for these reasons, the inversions are unable to reproduce the flow structure near the top of the computational domain. Other constraints on the forward modeling and

approximations used in the design of the sensitivity kernels may need to be considered in order to improve the performance of flow inversions.

In conclusion, our findings indicate that errors in the RLS inversions result from the combined effects of cross talk between signals, choice of regularization parameters, design of sensitivity kernels, and inconsistencies among boundary conditions, all of which are open areas of research requiring further study. We note that improvement in performance, particularly in regard to cross-talk effects, has been seen in the optimally localized average (OLA) approach to reduce the size of the side lobes on the averaging kernels and limit spatial leakage (Jackiewicz, Gizon, and Birch, 2008; Švanda *et al.*, 2011; Jackiewicz *et al.*, 2012).

Acknowledgements D.E.D. and A.C.B. acknowledge support from NASA contracts NNNH09CF68C and NNNH07CD25C. D.C.B. acknowledges support from NASA contract NNNH09CE41C. The data from the simulations used in this study are located on a publicly accessible website (<http://www.cora.nwra.com/~dombroski/supergranulation/>) to facilitate further investigation. The authors thank the referee for helpful suggestions. A.C.B. and S.M.H. acknowledge collaborative work within the framework of the DFG CRC 963 “Astrophysical Flow Instabilities and Turbulence” (Project A1).

Open Access This article is distributed under the terms of the Creative Commons Attribution License which permits any use, distribution, and reproduction in any medium, provided the original author(s) and the source are credited.

References

- Birch, A.C., Gizon, L.: 2007, Linear sensitivity of helioseismic travel times to local flows. *Astron. Nachr.* **328**(3–4), 228–233. doi:[10.1002/asna.200610724](https://doi.org/10.1002/asna.200610724).
- Birch, A.C., Gizon, L., Burston, R.: 2011, Erratum: Linear sensitivity of helioseismic travel times to local flows. *Astron. Nachr.* **332**(6), 658. doi:[10.1002/asna.201111557](https://doi.org/10.1002/asna.201111557).
- Birch, A.C., Kosovichev, A.G., Duvall, T.L. Jr.: 2004, Sensitivity of acoustic wave travel times to sound-speed perturbations in the solar interior. *Astrophys. J.* **608**, 580–600. doi:[10.1086/386361](https://doi.org/10.1086/386361).
- Birch, A.C., Parchevsky, K.V., Braun, D.C., Kosovichev, A.G.: 2011, “Hare and hounds” tests of helioseismic holography. *Solar Phys.* **272**, 11–28. ADS:[2011SoPh..272...11B](https://ui.adsabs.org/2011SoPh..272...11B), doi:[10.1007/s11207-011-9799-1](https://doi.org/10.1007/s11207-011-9799-1).
- Braun, D.C., Birch, A.C.: 2008, Surface-focused seismic holography of sunspots: I. Observations. *Solar Phys.* **251**, 267–289. ADS:[2008SoPh..251..267B](https://ui.adsabs.org/2008SoPh..251..267B), doi:[10.1007/s11207-008-9152-5](https://doi.org/10.1007/s11207-008-9152-5).
- Braun, D.C., Birch, A.C., Lindsey, C.: 2004, Local helioseismology of near-surface flows. In: Danesy, D. (ed.) *SOHO 14 Helio- and Asteroseismology: Towards a Golden Future* **SP-559**, ESA, Noordwijk, 337.
- Braun, D.C., Birch, A.C., Benson, D., Stein, R.F., Nordlund, Å.: 2007, Helioseismic holography of simulated solar convection and prospects for the detection of small-scale subsurface flows. *Astrophys. J.* **669**, 1395–1405. doi:[10.1086/521782](https://doi.org/10.1086/521782).
- Christensen-Dalsgaard, J., Dappen, W., Ajukov, S.V., Anderson, E.R., Antia, H.M., Basu, S., Baturin, V.A., Berthomieu, G., Chaboyer, B., Chitre, S.M., Cox, A.N., Demarque, P., Donatowicz, J., Dziembowski, W.A., Gabriel, M., Gough, D.O., Guenther, D.B., Guzik, J.A., Harvey, J.W., Hill, F., Houdek, G., Iglecias, C.A., Kosovichev, A.G., Leibacher, J.W., Morel, P., Proffitt, C.R., Provost, J., Reiter, J., Rhodes, E.J. Jr., Rogers, F.J., Roxburgh, I.W., Thompson, M.J., Ulrich, R.K.: 1996, The current state of solar modeling. *Science* **272**, 1286–1292. doi:[10.1126/science.272.5266.1286](https://doi.org/10.1126/science.272.5266.1286).
- Couvidat, S., Gizon, L., Birch, A.C., Larsen, R.M., Kosovichev, A.G.: 2005, Time-distance helioseismology: inversion of noisy correlated data. *Astrophys. J.* **158**, 217–229. doi:[10.1086/430423](https://doi.org/10.1086/430423).
- Crouch, A.D., Charbonneau, P., Thibault, K.: 2007, Supergranulation as an emergent length scale. *Astrophys. J.* **662**, 715–729. doi:[10.1086/515564](https://doi.org/10.1086/515564).
- De Rosa, M.L., Toomre, J.: 2004, Evolution of solar supergranulation. *Astrophys. J.* **616**, 1242–1260. doi:[10.1086/424920](https://doi.org/10.1086/424920).
- Duvall, T.L. Jr.: 1980, The equatorial rotation rate of the supergranulation cells. *Solar Phys.* **66**, 213–221. ADS:[1980SoPh...66..213D](https://ui.adsabs.org/1980SoPh...66..213D), doi:[10.1007/BF00150578](https://doi.org/10.1007/BF00150578).
- Duvall, T.L. Jr.: 1998, Recent results and theoretical advances in local helioseismology. In: Korzenik, S. (ed.) *Structure and Dynamics of the Interior of the Sun and Sun-Like Stars* **SP-418**, ESA, Noordwijk, 581.

- Duvall, T.L. Jr., Birch, A.C.: 2010, The vertical component of the supergranular motion. *Astrophys. J. Lett.* **725**, L47–L51. doi:[10.1088/2041-8205/725/1/L47](https://doi.org/10.1088/2041-8205/725/1/L47)
- Duvall, T.L., Hanasoge, S.M.: 2012, Subsurface supergranular vertical flows as measured using large distance separations in time-distance helioseismology. *Solar Phys.* **136**. doi:[10.1007/s11207-012-0010-0](https://doi.org/10.1007/s11207-012-0010-0).
- Duvall, T.L. Jr., Jefferies, S.M., Harvey, J.W., Pomerantz, M.A.: 1993, Time-distance helioseismology. *Nature* **362**, 430–432. doi:[10.1038/362430a0](https://doi.org/10.1038/362430a0).
- Gizon, L., Birch, A.C.: 2002, Time-distance helioseismology: the forward problem for random distributed sources. *Astrophys. J.* **571**, 966–986. doi:[10.1086/340015](https://doi.org/10.1086/340015).
- Gizon, L., Birch, A.C.: 2005, Local helioseismology. *Liv. Rev. Solar Phys.* **2**, 6. solarphysics.livingreviews.org/Articles/lrsp-2005-6/ (cited in October 2011).
- Gizon, L., Birch, A.C., Spruit, H.C.: 2010, Local helioseismology: three dimensional imaging of the solar interior. *Annu. Rev. Astron. Astrophys.* **48**, 289. doi:[10.1146/annurev-astro-082708-101722](https://doi.org/10.1146/annurev-astro-082708-101722)
- Hagenaar, H.J., Schrijver, C.J., Title, A.M.: 1997, The distribution of cell sizes of the solar chromospheric network. *Astrophys. J.* **481**, 988. doi:[10.1086/304066](https://doi.org/10.1086/304066).
- Hanasoge, S.M., Duvall, T.L.: 2006, Solar acoustic simulator. In: *Proceedings of SOHO 18/GONG 2006/HELAS I, Beyond the Spherical Sun SP-624*, ESA, Noordwijk, 40.
- Hanasoge, S.M., Duvall, T.L. Jr., Couvidat, S.: 2007, Validation of helioseismology through forward modeling: realization noise subtraction and kernels. *Astrophys. J.* **664**, 1234–1243. doi:[10.1086/519070](https://doi.org/10.1086/519070).
- Hanasoge, S.M., Larsen, R.M., Duvall, T.L. Jr., De Rosa, M.L., Hurlburt, N.E., Schou, J., Roth, M., Christensen-Dalsgaard, J., Lele, S.K.: 2006, Computational acoustics in spherical geometry: steps toward validating helioseismology. *Astrophys. J.* **648**, 1268–1275. doi:[10.1086/505927](https://doi.org/10.1086/505927).
- Hanasoge, S.M., Couvidat, S., Rajaguru, S.P., Birch, A.C.: 2008, Impact of locally suppressed wave sources on helioseismic traveltimes. *Mon. Not. Roy. Astron. Soc.* **391**, 1931–1939. doi:[10.1111/j.1365-2966.2008.14013.x](https://doi.org/10.1111/j.1365-2966.2008.14013.x).
- Hart, A.B.: 1954, Motions in the Sun at the photospheric level. IV. The equatorial rotation and possible velocity fields in the photosphere. *Mon. Not. Roy. Astron. Soc.* **114**, 17.
- Hart, A.B.: 1956, Motions in the Sun at the photospheric level. VI. Large-scale motions in the equatorial region. *Mon. Not. Roy. Astron. Soc.* **116**, 38.
- Hathaway, D.H.: 1992, Spherical harmonic analysis of steady photospheric flows. II. *Solar Phys.* **137**, 15–32. ADS:[1992SoPh..137...15H](https://ui.adsabs.org/1992SoPh..137...15H), doi:[10.1007/BF00146573](https://doi.org/10.1007/BF00146573).
- Hathaway, D.H., Beck, J.G., Han, S., Raymond, J.: 2002, Radial flows in supergranules. *Solar Phys.* **205**, 25–38. ADS:[2002SoPh..205...25H](https://ui.adsabs.org/2002SoPh..205...25H), doi:[10.1023/A:1013881213279](https://doi.org/10.1023/A:1013881213279).
- Hirzberger, J., Gizon, L., Solanki, S.K., Duvall, T.L.: 2008, Structure and evolution of supergranulation from local helioseismology. *Solar Phys.* **251**, 417–437. ADS:[2008SoPh..251..417H](https://ui.adsabs.org/2008SoPh..251..417H), doi:[10.1007/s11207-008-9206-8](https://doi.org/10.1007/s11207-008-9206-8).
- Jackiewicz, J., Gizon, L., Birch, A.C.: 2008, High-resolution mapping of flows in the solar interior: fully consistent OLA inversion of helioseismic travel times. *Solar Phys.* **251**, 381–415. ADS:[2008SoPh..251..381J](https://ui.adsabs.org/2008SoPh..251..381J), doi:[10.1007/s11207-008-9158-z](https://doi.org/10.1007/s11207-008-9158-z).
- Jackiewicz, J., Birch, A.C., Gizon, L., Hanasoge, S.M., Hohage, T., Ruffio, J.B., Švanda, M.: 2012, Multichannel three-dimensional SOLA inversion for local helioseismology. *Solar Phys.* **276**, 19–33. ADS:[2012SoPh..276...19J](https://ui.adsabs.org/2012SoPh..276...19J), doi:[10.1007/s11207-011-9873-8](https://doi.org/10.1007/s11207-011-9873-8).
- Jacobsen, B., Møller, I., Jensen, J., Efferso, F.: 1999, Multichannel deconvolution, MCD, in geophysics and helioseismology. *Phys. Chem. Earth A* **24**, 215–220. doi:[10.1016/S1464-1895\(99\)00021-6](https://doi.org/10.1016/S1464-1895(99)00021-6).
- Kosovichev, A.G.: 1996, Tomographic imaging of the Sun's interior. *Astrophys. J. Lett.* **461**, L55. doi:[10.1086/309989](https://doi.org/10.1086/309989).
- Kosovichev, A.G., Duvall, T.L. Jr.: 1997, Acoustic tomography of solar convective flows and structures. In: Pijpers, F.J., Christensen-Dalsgaard, J., Rosenthal, C.S. (eds.) *SCORE'96 : Solar Convection and Oscillations and Their Relationship, Astrophys. and Space Science Lib* **225**, 241–260.
- Leighton, R.B., Noyes, R.W., Simon, G.W.: 1962, Velocity fields in the solar atmosphere. I. Preliminary report. *Astrophys. J.* **135**, 474. doi:[10.1086/147285](https://doi.org/10.1086/147285).
- Lele, S.K.: 1992, Compact finite difference schemes with spectral-like resolution. *J. Comput. Phys.* **103**, 16. doi:[10.1016/0021-9991\(92\)90324-R](https://doi.org/10.1016/0021-9991(92)90324-R).
- Lindsey, C., Braun, D.C.: 1990, Helioseismic imaging of sunspots at their antipodes. *Solar Phys.* **126**, 101–115. ADS:[1990SoPh..126..101L](https://ui.adsabs.org/1990SoPh..126..101L), doi:[10.1007/BF00158301](https://doi.org/10.1007/BF00158301).
- Lindsey, C., Braun, D.C.: 2000, Basic principles of solar acoustic holography – (Invited review). *Solar Phys.* **192**, 261–284. ADS:[2000SoPh..192..261L](https://ui.adsabs.org/2000SoPh..192..261L), doi:[10.1023/A:1005227200911](https://doi.org/10.1023/A:1005227200911).
- Ploner, S.R.O., Solanki, S.K., Gadun, A.S.: 2000, Is solar mesogranulation a surface phenomenon? *Astron. Astrophys.* **356**, 1050–1054.
- Rast, M.P.: 2003, Supergranulation: new observation, possible explanation. In: Sawaya-Lacoste, H. (ed.) *GONG+ 2002. Local and Global Helioseismology: The Present and Future SP-517*, ESA, Noordwijk, 163–172.

- Rieutord, M., Rincon, F.: 2010, The Sun's supergranulation. *Living Rev. Solar Phys.* **7**, 2. <http://solarphysics.livingreviews.org/Articles/lrsp-2010-2/> (cited October 2011).
- Rieutord, M., Roudier, T., Malherbe, J.M., Rincon, F.: 2000, On mesogranulation, network formation and supergranulation. *Astron. Astrophys.* **357**, 1063–1072.
- Rieutord, M., Roudier, T., Ludwig, H., Nordlund, Å., Stein, R.: 2001, Are granules good tracers of solar surface velocity fields? *Astron. Astrophys.* **377**, L14–L17. doi:[10.1051/0004-6361:20011160](https://doi.org/10.1051/0004-6361:20011160).
- Rieutord, M., Roudier, T., Rincon, F., Malherbe, J., Meunier, N., Berger, T., Frank, Z.: 2010, On the power spectrum of solar surface flows. *Astron. Astrophys.* **512**, A4. doi:[10.1051/0004-6361/200913303](https://doi.org/10.1051/0004-6361/200913303).
- Schunker, H., Cameron, R.H., Gizon, L., Moradi, H.: 2011, Constructing and characterising solar structure models for computational helioseismology. *Solar Phys.*, **124**, 1–26. doi:[10.1007/s11207-011-9790-x](https://doi.org/10.1007/s11207-011-9790-x).
- Sekii, T., Kosovichev, A.G., Zhao, J., Tsuneta, S., Shibahashi, H., Berger, T.E., Ichimoto, K., Katsukawa, Y., Lites, B., Nagata, S., Shimizu, T., Shine, R.A., Suematsu, Y., Tarbell, T.D., Title, A.M.: 2007, Initial helioseismic observations by Hinode/SOT. *Publ. Astron. Soc. Japan* **59**, 637–641.
- Simon, G.W., Leighton, R.B.: 1964, Velocity fields in the solar atmosphere. III. Large-scale motions, the chromospheric network, and magnetic fields. *Astrophys. J.* **140**, 1120–1149. doi:[10.1086/148010](https://doi.org/10.1086/148010).
- Švanda, M., Gizon, L., Hanasoge, S.M., Ustyugov, S.D.: 2011, Validated helioseismic inversions for 3D vector flows. *Astron. Astrophys.* **530**, A148. doi:[10.1051/0004-6361/201016426](https://doi.org/10.1051/0004-6361/201016426).
- Werne, J., Birch, A., Julien, K.: 2004, The need for control experiments in local helioseismology. In: Danesy, D. (ed.) *SOHO 14 Helio- and Asteroseismology: Towards a Golden Future SP-559*, ESA, Noordwijk, 172.
- Woodard, M.F.: 2007, Probing supergranular flow in the solar interior. *Astrophys. J.* **668**, 1189–1195. doi:[10.1086/521391](https://doi.org/10.1086/521391).
- Worden, S.P., Simon, G.W.: 1976, A study of supergranulation using a diode array magnetograph. *Solar Phys.* **46**, 73–91. ADS:[1976SoPh...46...73W](https://ui.adsabs.org/1976SoPh...46...73W), doi:[10.1007/BF00157555](https://doi.org/10.1007/BF00157555).
- Zhao, J., Kosovichev, A.G.: 2003, On the inference of supergranular flows by time-distance helioseismology. In: Sawaya-Lacoste, H. (ed.) *GONG+ 2002. Local and Global Helioseismology: The Present and Future SP-517*, ESA, Noordwijk, 417–420.
- Zhao, J., Kosovichev, A.G., Duvall, T.L. Jr.: 2001, Investigation of mass flows beneath a sunspot by time-distance helioseismology. *Astrophys. J.* **557**, 384–388. doi:[10.1086/321491](https://doi.org/10.1086/321491).
- Zhao, J., Georgobiani, D., Kosovichev, A.G., Benson, D., Stein, R.F., Nordlund, Å.: 2007, Validation of time-distance helioseismology by use of realistic simulations of solar convection. *Astrophys. J.* **659**, 848–857. doi:[10.1086/512009](https://doi.org/10.1086/512009).