

Imaging the Distribution of Sodium Dodecyl Sulfate in Skin by Confocal Raman and Infrared Microspectroscopy

G. Mao · C. R. Flach · R. Mendelsohn · R. M. Walters

Received: 30 November 2011 / Accepted: 22 March 2012 / Published online: 4 April 2012
© The Author(s) 2012. This article is published with open access at Springerlink.com

ABSTRACT

Purpose To image SDS distribution across different skin regions, to compare the permeability difference between porcine and human skin, and to evaluate the interaction between SDS and skin.

Methods Full thickness porcine and human skin was treated with acyl chain perdeuterated SDS (SDS-d₂₅) at room temperature and at 34 °C for 3, 24 and 40 h. SDS distribution in skin was monitored by confocal Raman and IR microspectroscopic imaging. Permeation profiles of SDS-d₂₅ in skin were derived from the band intensities of the CD₂ stretching vibrations. The interaction between SDS and skin was monitored through the CH₂ and CD₂ stretching frequencies and the Amide I and II spectral region.

Results SDS-d₂₅ penetrates both porcine and human skin in a time and temperature-dependent manner, with slightly higher permeability through the stratum corneum (SC) in porcine skin. When SDS permeates into the SC, its chains are more ordered compared to SDS micelles. The secondary structure of keratin in the SC is not affected by SDS-d₂₅.

Conclusion The spatial distribution of SDS-d₂₅ in skin was obtained for the first time. Infrared microscopic imaging provides unique opportunities to measure concentration profiles of exogenous materials in skin and offers insights to interaction between permeants and skin.

KEY WORDS confocal Raman microscopy · Infrared (IR) imaging · permeation/penetration · skin · surfactant

ABBREVIATIONS

CMC	critical micelle concentration
Der	dermis
SC	stratum corneum
SDS	sodium dodecyl sulfate
SDS-d ₂₅	acyl chain perdeuterated SDS
VE	viable epidermis
$\nu_{\text{asym}}\text{CH}_2$	asymmetric methylene stretching mode
$\nu_{\text{sym}}\text{CH}_2$	symmetric methylene stretching mode

INTRODUCTION

Stratum corneum (SC), the topmost layer of the epidermis, provides a vital barrier function in intact skin. SC structure, often portrayed as a brick and mortar assembly, is composed of anucleated corneocytes embedded in a continuous highly ordered multi-lamellar, lipid matrix (1). The SC lipid matrix provides the main barrier to water loss and permeation of exogenous substances. A primary function of the underlying viable epidermis (VE) is to generate the SC as its outer layers are continuously shed. Beneath the epidermis lies the dermis (Der), a dense, supportive fibroelastic connective tissue with extensive vascular and nerve networks along with excretory and secretory glands.

The lateral packing and lamellar phases of the highly ordered SC lipid matrix have been well studied by various biophysical techniques. In both human and porcine SC, two lamellar phases have been identified by X-ray diffraction (2,3) whereas the nature of the lateral lipid packing, as studied by X-ray and FTIR (4–7) is shown to vary between

Electronic supplementary material The online version of this article (doi:10.1007/s11095-012-0748-y) contains supplementary material, which is available to authorized users.

G. Mao (✉) · R. M. Walters
Johnson & Johnson Consumer Companies, Inc.
199 Grandview Rd.
Skillman, New Jersey 08558-9418, USA
e-mail: gmao@its.jnj.com

C. R. Flach · R. Mendelsohn
Department of Chemistry, Rutgers University
Newark, New Jersey, USA

species. SC lipids are predominantly packed in ordered orthorhombic and hexagonal phases with some (small amounts) disordered lipid also likely present. Keeping in mind sample to sample variation, which is noteworthy, the balance of orthorhombic to hexagonal phase appears to be much greater in human compared to porcine SC. Compositional differences in ceramide classes and fatty acid chain lengths have also been delineated (8,9) between human and porcine SC lipids. A range of temperatures (30–40 °C) have been reported for the orthorhombic to hexagonal phase transition in human SC while the transition has been difficult to measure in porcine SC. Overall at skin surface temperature (~34 °C), a fair amount of orthorhombic phase remains in human with lesser amounts in pig SC.

Surfactants, one of the most widely used components of personal care products and also studied as excipients for drug delivery systems, are recognized as skin irritants. Sodium dodecyl sulfate (SDS) has been extensively studied as a model surfactant in skin research (10,11). Increases in trans-epidermal water loss (TEWL) following SDS treatment have been reported (12–16). In addition to damaging the skin barrier, SDS permeation causes irritation and inflammation (13,17). It also alters barrier renewing processes by affecting keratinocyte differentiation (18,19) and desquamation (18). SDS evidently not only interacts with the SC but also with deeper skin layers. Thus, its permeation and distribution in skin is of substantial interest.

To date, SDS permeation has been evaluated with a variety of techniques including diffusion cells (20) and patch testing (12,13) with analytical determination of SDS concentration via GC/LC-MS or radioactivity measurements (20). In addition, recent studies of isolated human SC from our laboratories (21) have analyzed the effects of SDS on the conformational order, packing, and phase behavior of the endogenous lipids. However, detailed information concerning the spatial distribution of surfactants in different skin regions is lacking.

Over the past 15 years, confocal Raman microscopy and IR microspectroscopic imaging have evolved as convenient approaches to evaluate permeation of topically applied agents in skin (22–26). The penetration of exogenous components is tracked from the spatial distribution of their characteristic vibrational bands. Agents with isotopically labeled functional groups increase the specificity of the method without affecting permeation. In addition to tracking the permeation of exogenous materials through skin, Raman and IR microspectroscopic imaging can monitor molecular structure changes (e.g. lipid chain ordering and protein secondary structure) induced in skin constituents by the exogenous agents. In the current study, we utilize IR imaging in a novel way, namely, to quantitatively report on the spatial distribution of the concentration of SDS in the SC, VE, and dermis and to evaluate the interaction between

SDS and skin components at the molecular level. To the best of our knowledge, this is the first reported quantitative application of IR imaging.

MATERIALS AND METHODS

Chemicals

Chain perdeuterated sodium dodecyl sulfate (SDS-d₂₅), 98 atom% D, was purchased from Sigma-Aldrich (St. Louis, MO).

Skin biopsies from Yucatan white, hairless pigs in the vicinity of pig ribs were purchased from Sinclair Research Center Inc. (Columbia, MO). Human abdominal skin (otherwise to be discarded) from plastic surgery was obtained from dermatological offices, with informed consent and approval of the institutional ethics committee. Skin specimens were fast frozen in liquid nitrogen after removal of subcutaneous fat tissue and stored at –20 °C for no longer than 1 year prior to use.

Sample Preparation

SDS-d₂₅ was dissolved at about nine times its critical micelle concentration (CMC) in 1× PBS (12.5 mg/mL or 40.8 mM), a concentration similar to typical dermal exposure to personal care cleansers after dilution. Skin samples were cut to ~10×10 mm² surface area with a thickness of 2.5 mm and thawed at room temperature. Sample surfaces were cleaned with wet cotton swabs and excess moisture was removed. For SDS treatment, skin samples were secured to home-built diffusion type cells with the SC facing the donor chamber. The surface area of the donor chamber is ~50 mm² with a diameter of 8 mm. ~120 μL of the SDS-d₂₅ solution was added to the donor chamber while the receptor chamber was left empty. Samples, wrapped with parafilm to minimize solvent evaporation and to keep skin hydrated, were incubated at room temperature or at 34 °C for 3, 24 or 40 h. Excess SDS-d₂₅ was removed after incubation and the skin surface was cleaned with wet cotton swabs.

Duplicate porcine skin samples were treated under various conditions for Raman measurements. After treatment, skin samples were transferred to a brass sample holder and kept enclosed in the holder with a glass cover slide for confocal Raman measurements. Both porcine and human skin was used for IR imaging studies and duplicate skin samples were prepared for the bulk of the IR measurements. Skin sections, ~7 μm thick, were microtomed perpendicular to the skin surface for IR imaging. Eight to twelve microtomed slices were collected from each skin preparation, four of which were analyzed with IR imaging.

Confocal Raman Microscopy/IR Microspectroscopic Imaging

Raman spectra were acquired with a Raman microprobe (Kaiser Optical Systems, Inc., Ann Arbor, MI). The instrument has been previously described (27). Excitation is achieved with a 785 nm solid state diode laser. Approximately 7 mW of single mode power is focused with a 100 \times oil immersion objective to a volume of $\sim 2 \mu\text{m}^3$ within the sample. Spectra were acquired using a 60-second exposure time, three accumulations, and cosmic ray correction. Confocal maps were obtained at room temperature from 10 lines of spectra collected perpendicular to the skin surface with a step size of 5 μm .

IR images of skin sections were collected with a Perkin-Elmer Spotlight 300 system (PerkinElmer Life and Analytical Sciences, Inc., Waltham, MA) utilizing the transmission mode with a 6.25 μm pixel size. 32 scans with a spectral resolution of 4 cm^{-1} were averaged for each pixel. The IR image size generated from each skin sample was 300 \times 200 μm , with 48 pixels in the direction perpendicular to the skin surface and 32 pixels in the direction parallel to the skin surface. Visible images of the sampled skin regions were acquired with the microscope integrated into the Spotlight 300 system.

We note that the methylene scissoring and rocking modes, which are uniquely sensitive to acyl chain packing phases, are not discussed in the current set of experiments. The rocking modes (715–735 cm^{-1} region) are out of range for the imaging detector and the scissoring bands (1,455–1,480 cm^{-1} region) lack sufficient signal to noise ratios for data analysis in spectra of the $\sim 7 \mu\text{m}$ thick skin sections.

Analysis of IR and Raman Data

Visible microscopic images of skin samples are presented as acquired without additional processing. Vibrational microspectroscopic images were created from Raman and IR spectral data with ISys 3.1 software (Malvern Instruments, UK). Spectra extracted from the images were analyzed with Grams/32 (Galactic Industries Corp., Salem, NH). Figures were prepared for presentation with SigmaPlot 2000 (SPSS Inc., Chicago, IL).

The factor analysis algorithm in ISys 3.1 software was utilized in the current work to differentiate and classify skin regions based on the 2,830–3,000 cm^{-1} spectral region. Factor analysis requires for its implementation the prior availability of PCA scores and loadings. The latter are acquired by unfolding the image cube into a two dimensional array, \mathbf{X} , with pixel spectra along each row. PCA requires decomposition of the data matrix \mathbf{X} into $\Sigma_j \mathbf{S}_j \mathbf{L}_j$. Each \mathbf{L}_j is a $1 \times k$ loading vector, where k is the spectral dimension of the data matrix. Each \mathbf{S}_j is a score vector. The

product $\mathbf{S}_j \mathbf{L}_j$ is the fractional variance of \mathbf{X} accounted for by the j 'th principal component.

The loading vectors resulting from the PCA calculation are not pure component spectra. Factor analysis seeks transformations of the PCA loading vectors to the true underlying (chemical) factors. In the current case, each factor is the sum of spectra from the chemical constituents of the tissue, which contributes to the variance at a particular site. A set of scores, \mathbf{S} , is generated by $\mathbf{S} = \mathbf{X} * \mathbf{L}'$, where \mathbf{L}' is the transpose of the matrix of normalized loadings.

Factor analysis is carried out using a score segregation routine. The analysis seeks to detect simple patterns in the relationships between observed variables in order to reduce the dimensionality of the data. Score segregation begins by normalizing PCA scores which may then be sharpened by raising them to a power specified by an acceleration parameter. Factor loadings are calculated according to $(\mathbf{S}'\mathbf{S})^{-1} * \mathbf{S}' * \mathbf{X}$. Usually 3–6 significant factors are observed.

Determination of SDS-d₂₅ Concentration in IR Images

SDS chain perdeuteration shifts the methylene stretching frequencies to a spectral region free of interference from endogenous skin vibrations. As IR spectra of skin samples were acquired in the transmission mode, Beer's law is applicable. Molar extinction coefficients were derived from the peak area of the symmetric CD₂ stretching mode ($\nu_{\text{sym}}\text{CD}_2$) for SDS-d₂₅ in both aqueous and ethanolic solutions using a fixed path length (15 μm) CaF₂ cell. SDS-d₂₅ was not sufficiently soluble in any additional solvents of greater hydrophobicity to acquire IR spectra of adequate quality. Measured values were $3.62 \times 10^3 \text{ mol}^{-1} \text{ dm}^3 \text{ cm}^{-1}$ for SDS-d₂₅ in water and $4.11 \times 10^3 \text{ mol}^{-1} \text{ dm}^3 \text{ cm}^{-1}$ in ethanol. Correlation coefficients from the Beer's plots were 98.6 % and 98.9 % for aqueous and ethanol solutions respectively, which demonstrates the very high precision of using $\nu_{\text{sym}}\text{CD}_2$ peak area to calculate SDS-d₂₅ concentration. We assume a mean extinction coefficient of $3.87 \times 10^3 \text{ mol}^{-1} \text{ dm}^3 \text{ cm}^{-1}$ to calculate SDS-d₂₅ concentration in skin.

We are well aware that changes in SDS-d₂₅ structure/environment may substantially alter the extinction coefficients from those determined in ethanol or water. Chain methylene stretching vibrations are sensitive monitors of conformational order, which in turn defines elements of the micellar structure and correlates to IR band intensity/extinction coefficients. Comparison of SDS-d₂₅ $\nu_{\text{sym}}\text{CD}_2$ stretching frequencies in various skin regions to those in standard solutions provides an estimation of the conservation of the extinction coefficients in skin.

The conformational order of the chains in a 40.8 mM SDS micellar solution is characterized by an observed $\nu_{\text{sym}}\text{CD}_2$ of 2095.1 cm^{-1} which is quite similar to that of

SDS in the dermis (2094.4 cm^{-1} with calculated average concentration of 36.9 mM). This similarity in IR frequencies and concentrations indicates that the chain conformation in solution and in the dermis are similar, and further suggests that the extinction coefficients obtained for micelles can be transferred to SDS in the dermis with reasonable accuracy (5–10 %). In contrast, the average $\nu_{\text{sym}}\text{CD}_2$ of SDS chains is 2091.6 cm^{-1} and 2092.3 cm^{-1} for SDS in SC and VE respectively, where conformational order has increased compared to the SDS in the standard solutions (2095.1 cm^{-1} as stated above). SDS chain ordering occurs on cooling below the Krafft point causing a frequency shift in $\nu_{\text{sym}}\text{CD}_2$ to 2089.4 cm^{-1} along with a $\sim 38\%$ increase in peak area and therefore in extinction coefficient. Thus, the calculated concentration of SDS in the SC and VE using the average extinction coefficient (described above) is likely to be higher than the true value. Since the IR frequency shift is not a linear function of the extent of conformational order, the uncertainty caused by chain ordering in the SC and viable epidermis is difficult to ascertain. The calculated concentration is expected to be an overestimation by a maximum of 38 % but is more likely to be $\sim 20\%$.

RESULTS

Confocal Raman microscopy provides a convenient approach to track the permeation of exogenous agents in skin without complicated sample preparation. The $\nu_{\text{sym}}\text{CD}_2$ band between $2,050$ and $2,150\text{ cm}^{-1}$, shown in Fig. 1a, is

utilized to track the extent of SDS- d_{25} permeation. The ring-breathing mode of phenylalanine (phe) at $\sim 1,004\text{ cm}^{-1}$ arising from skin proteins is used as an internal standard to normalize for Raman intensity loss as a function of depth in the skin. Also shown in Fig. 1a are spectra of untreated porcine skin and an SDS- d_{25} solution.

To evaluate the effects of incubation time and temperature on SDS- d_{25} permeation, porcine skin was treated with SDS- d_{25} at both room temperature and $34\text{ }^\circ\text{C}$, a temperature close to skin surface temperature, for 3, 24 and 40 h. The distribution of SDS- d_{25} is shown in Fig. 1b. The skin surface is presented at the top of each image plane. The SC of porcine skin is typically $15\text{--}30\text{ }\mu\text{m}$ thick and 3–6 pixels were collected from SC region. The relative SDS- d_{25} concentration in the skin is plotted as the logarithm of the area ratio of the $\nu_{\text{sym}}\text{CD}_2$ contour to the $1,004\text{ cm}^{-1}$ phe vibration. The logarithmic presentation permits a wider range of concentrations to be delineated in the color coding scheme of the images. Pixels with a $\nu_{\text{sym}}\text{CD}_2$ peak height smaller than 50 Raman counts were not distinguishable from the noise level and are excluded. These pixels are colored in gray mostly at the bottom of each image plane. At room temperature, SDS- d_{25} was mostly limited to the top $20\text{--}30\text{ }\mu\text{m}$ of skin; the highest SDS- d_{25} intensity was observed for samples treated for 24 h. Detectable levels of SDS- d_{25} permeated much deeper into skin when incubated at $34\text{ }^\circ\text{C}$, especially after 24 and 40 h treatments.

The observation of lower SDS- d_{25} intensity in the top layers of skin following 40 h compared to 24 h treatment was unanticipated. Also, less SDS- d_{25} was present in the top

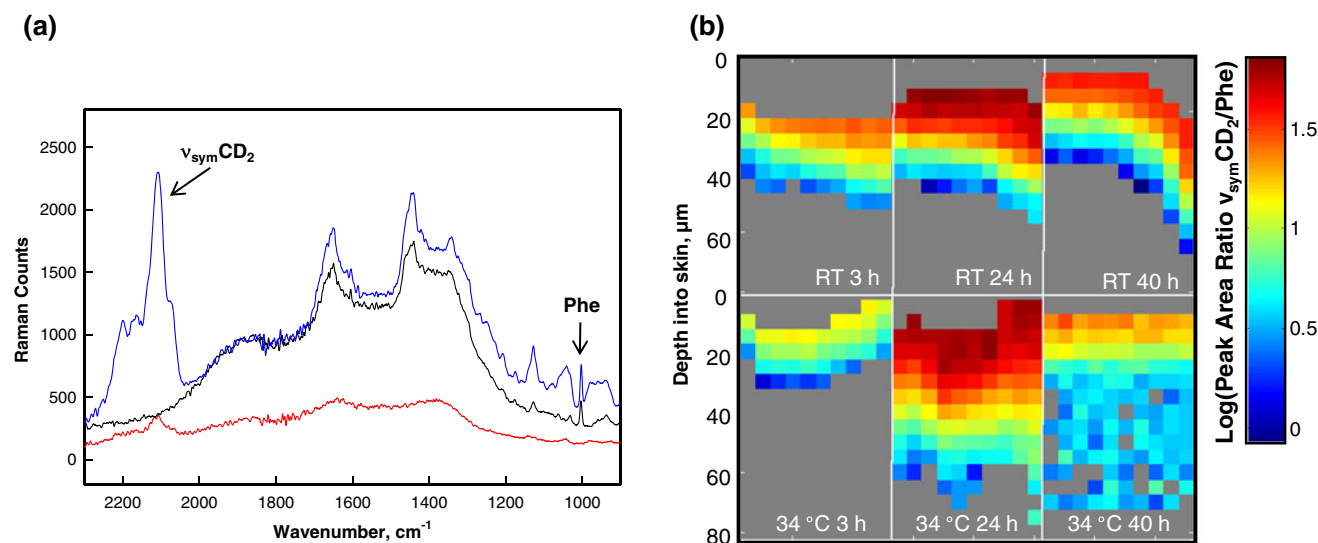


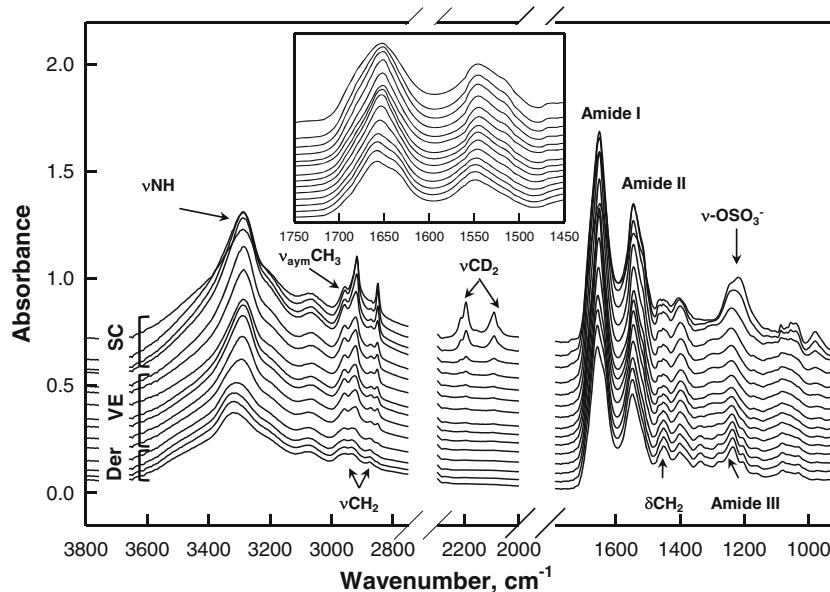
Fig. 1 (a) Raman spectra ($900\text{--}2,300\text{ cm}^{-1}$ region) of a 12.5 mg/ml SDS- d_{25} solution (red), and the SC region of porcine skin before (black) and after (blue) SDS- d_{25} treatment. The $\nu_{\text{sym}}\text{CD}_2$ from SDS- d_{25} and the phenylalanine ring-breathing mode (Phe) from skin are noted in the spectra. (b) Confocal Raman image planes depicting SDS- d_{25} distribution in porcine skin following treatment at room temperature (RT) and $34\text{ }^\circ\text{C}$ for 3, 24, and 40 h. The skin surface is presented at the top of each image plane. Pixels with a CD_2 peak height smaller than 50 Raman counts were indistinguishable from the noise level and are excluded. These pixels are colored in gray mostly at the bottom of each image plane. The SDS- d_{25} concentration distribution in skin is displayed as the logarithm of the integrated peak area ratio of $\nu_{\text{sym}}\text{CD}_2/\text{Phe}$. Treatment time and temperatures are noted in the images.

skin layers when treated at 34 °C compared to room temperature for 3 h and 40 h treatment times. Although there is significantly less orthorhombic phase in porcine compared to human SC (see [Introduction](#)), these observations may result from a small temperature-dependent decrease in the ratio of orthorhombic to hexagonally packed lipids. We also suspect that SDS-d₂₅ disrupts the SC lipid structural integrity. Both perturbations appear to modify SDS solubility in the SC.

While Raman microscopy is convenient for the study of SDS-d₂₅ permeation into the SC, the diminution of Raman intensity with depth precludes the possibility of obtaining high quality spectral data at depths greater than ~85 μm. Therefore, IR imaging was used to track SDS-d₂₅ permeation at greater skin depths.

Figure 2 shows a set of IR spectra from human skin samples treated with SDS-d₂₅ for 24 h at 34 °C. Spectra are overlaid and labeled according to their position in skin. The step size between each collected spectrum is 6.25 μm. The CH₂ asymmetric and symmetric stretching modes ($\nu_{\text{asym}}\text{CH}_2$ and $\nu_{\text{sym}}\text{CH}_2$, respectively) at ~2,920 cm⁻¹ and ~2,850 cm⁻¹ and the CH₂ scissoring mode (δCH_2) contour between ~1,460–1,475 cm⁻¹ arise mostly from skin lipids. These frequencies are sensitive to lipid acyl chain conformation and packing order (28). The N-H stretching mode (νNH) at ~3,290 cm⁻¹, CH₃ asymmetric stretching mode, ($\nu_{\text{asym}}\text{CH}_3$) at ~2,950 cm⁻¹ and the Amide I and Amide II bands (better shown in Fig. 2 inset) at ~1,650 cm⁻¹ and ~1,550 cm⁻¹ arise mostly from vibrations of skin proteins. Features arising from SDS-d₂₅ include the CD₂ acyl chain stretching modes (~2,050–2,250 cm⁻¹) and the alkyl sulfonate stretching bands at ~1,210 cm⁻¹. The latter overlap with the protein Amide III modes from skin and are therefore not analyzed further.

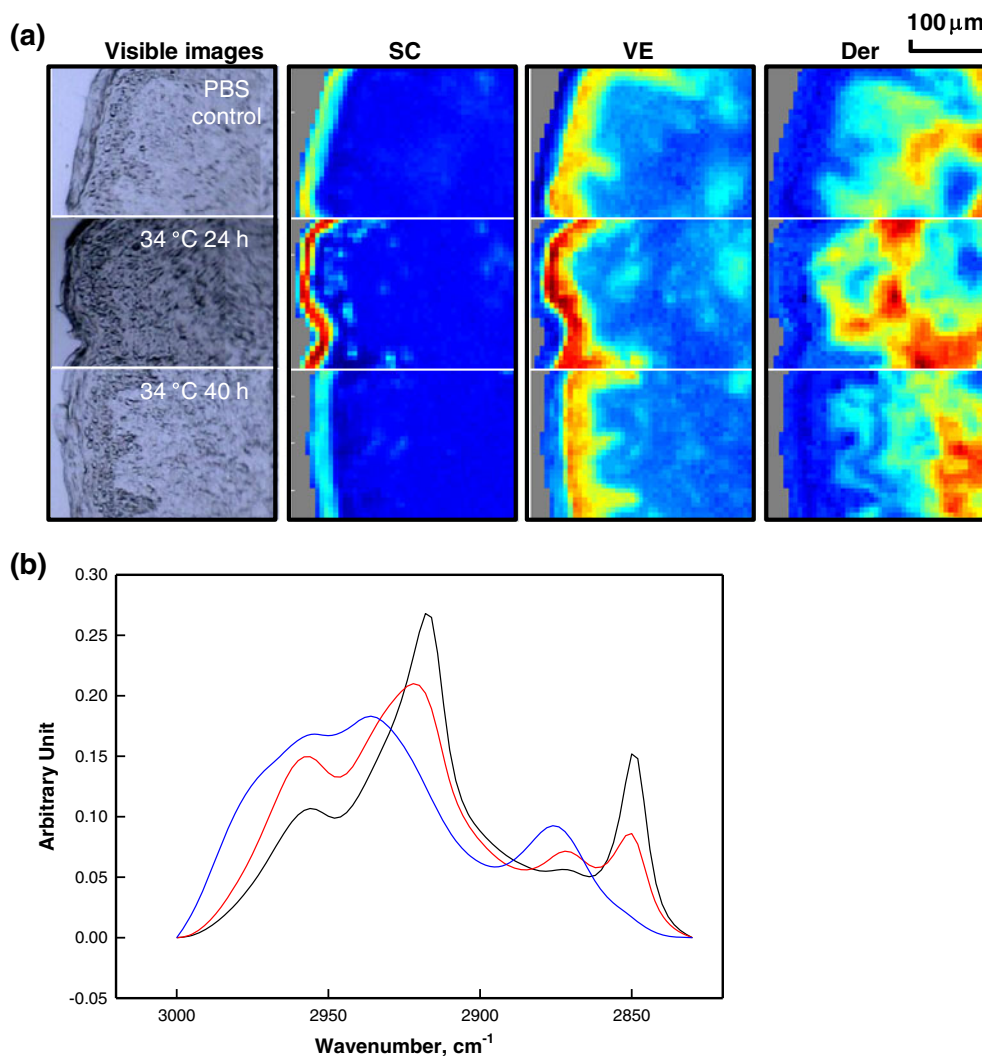
Fig. 2 A set of IR spectra from human skin after 24 h SDS-d₂₅ treatment at 34 °C. Spectra from the skin surface are shown on top while spectra from deeper skin regions are at the bottom, with a 6.25 μm depth increment between traces. Skin regions, from which the spectra are shown, are labeled and relevant spectral assignments are noted. The same spectra are expanded upon in the Amide I and II region in the inset.



Delineation of skin regions (e.g. SC vs VE vs dermis) is facilitated by the spectral information regarding skin structure and (bio)chemical composition in the IR images. Whereas skin regions can be approximately visualized from the visible microscopic images presented in the first column of Fig. 3a, IR imaging provides a more precise way to differentiate skin regions. As shown in Fig. 2, IR spectra of skin, especially the νCH_2 and Amide region, change systematically with depth into skin and when moving from one skin region to another. In the current case, factor analysis is applied to the 2,830–3,000 cm⁻¹ range of the spectral images to delineate different skin regions. The results for human skin treated with SDS-d₂₅ for 24 h or 40 h at 34 °C along with a control sample consisting of skin treated with PBS buffer for 24 h at 34 °C, are shown in Fig. 3. The three factor loadings shown in Fig. 3b clearly differentiate the spectral characteristics of the SC, VE and dermis and are nearly identical to the actual spectra from each skin region shown in Fig. 2. Factor score images are shown for each loading spectrum in columns 2–4 of Fig. 3a. The color coding measures the correlations between the actual spectrum at each pixel and the factor loading, with red showing the highest similarity and blue, the lowest. The thickness of the SC is observed to be about ~20 μm as shown in the second column of Fig. 3a. The thickness of the VE varies between samples and also laterally within each sample due to the papillae undulations in the dermis. The PBS control and SDS-d₂₅ treated SC are slightly thicker compared to untreated skin samples (data not shown). Thus, the observed SC swelling presumably results predominantly from PBS rather than from SDS-d₂₅ penetration and is not discussed further.

The $\nu_{\text{sym}}\text{CD}_2$ band intensities in the IR are utilized to track SDS-d₂₅ levels in skin. As discussed in the experimental section, the concentration of SDS-d₂₅ (imaged in Fig. 4) was determined by Beer's Law with extinction coefficients

Fig. 3 (a) Microscopic images and factor analysis score images (color coding of scores: red > yellow > blue) depicting different regions of human skin from a PBS control experiment (24 h treatment at 34 °C) and following SDS-d₂₅ treatment for 24 and 40 h at 34 °C. The skin surface is located at the left of each image plane. Factor analysis was conducted over the CH stretching region (2,830–3,000 cm⁻¹). (b) Factor loadings map to high scores in the following regions of human skin: SC (black), VE (red) and Der (blue).



estimated from SDS-d₂₅ aqueous and ethanolic standard solutions. The approach demonstrates a unique advantage of IR imaging. The results for porcine and human skin are depicted in Fig. 4a and b, respectively, with the skin surface shown on the left-hand side of each image. The SDS-d₂₅ spatial distribution in the two species for similar treatment conditions exhibits some differences. For porcine skin shown in Fig. 4a, SDS-d₂₅ was mostly confined to the SC regions when samples were treated at RT or incubated for 3 h at 34 °C. For the remaining samples treated at 34 °C, SDS-d₂₅ permeated into the VE when treatment time increased to 24 h and diffused into the first 100–200 μm of the dermis following 40 h incubation. Similar or slightly higher SDS-d₂₅ concentration in the SC was observed with samples treated at RT compared to 34 °C. The highest SDS-d₂₅ concentration in SC was found for the 34 °C 24 h sample. This is consistent with confocal Raman results shown in Fig. 1b. For human skin shown in Fig. 4b, SDS was present only in SC regions for samples with treatment conditions of

RT 3 h, RT 24 h and 34 °C 3 h. SDS-d₂₅ penetrated into the VE after 40 h treatment at RT or 24 h incubation at 34 °C and continued to diffuse throughout the dermis after 40 h incubation at 34 °C. In contrast to porcine skin, higher SDS-d₂₅ concentration in the SC was detected in human skin samples treated at 34 °C compared to RT after the same incubation time. The highest SDS-d₂₅ concentration in human SC was observed with skin treated for 24 h and 40 h at 34 °C.

Line profiles depicting SDS-d₂₅ concentration with permeation depth were extracted from the images of the human skin 34 °C experiments (Fig. 4b) and are presented in Fig. 5. Four sample lines along with one line averaging laterally across the entire skin image are shown for each incubation period with SDS-d₂₅ concentrations at deeper skin sites more clearly shown in the inset of Fig. 5. Interference from the weak water association band between 2,000 and 2,500 cm⁻¹ precludes detection of CD₂ bands with peak heights lower than ~1.9 milliabsorbance units, providing a

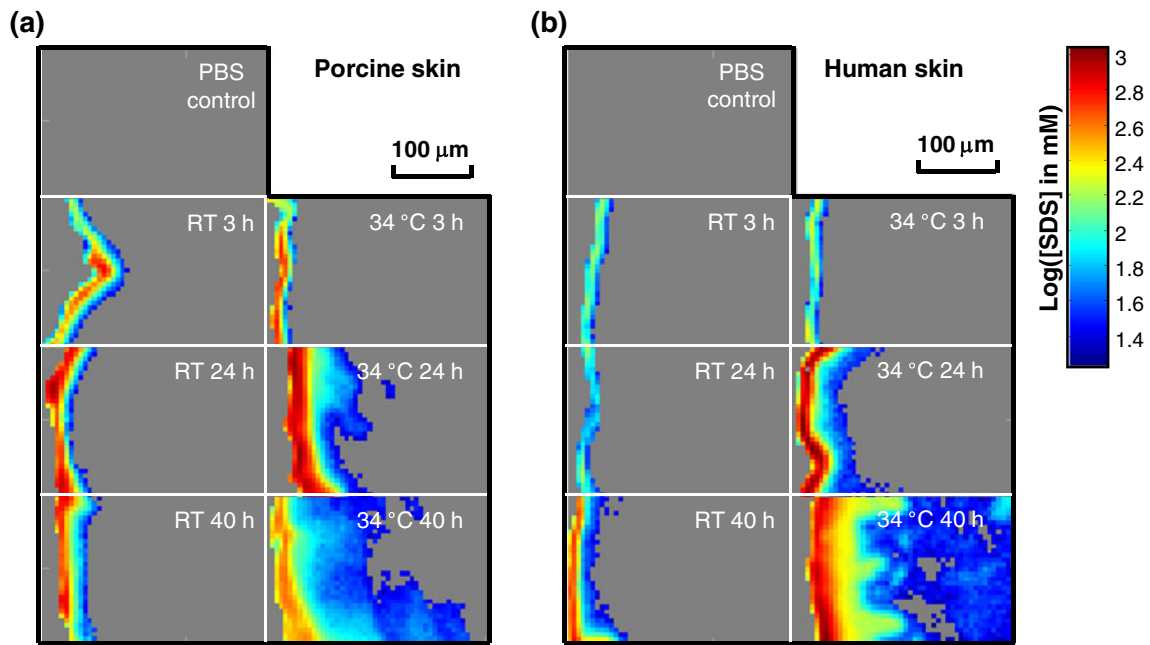


Fig. 4 IR image planes showing the SDS-d₂₅ concentration distribution in (a) porcine and (b) human skin following various SDS-d₂₅ treatment conditions along with control samples treated with PBS for 24 h. SC regions are shown on the left-hand side of each image. SDS-d₂₅ concentrations were calculated from the integrated peak area of $\nu_{\text{sym}}\text{CD}_2$ and are shown on a logarithm scale. Treatment time and temperatures are noted in the images.

detection limit of ~17 mM for SDS-d₂₅ concentration in skin. The same general time dependencies of SDS-d₂₅ permeation are seen in the line profiles of Fig. 5 as noted in the images of Fig. 4b, while SDS-d₂₅ concentration progression with depth into skin is more clearly presented with a linear

scale. The SDS-d₂₅ concentrations decreased rapidly with depth into the SC and became largely unchanged across the VE. Following an additional, less steep concentration gradient for the 40 h sample across the epidermal/dermal boundary (individual line profiles), SDS-d₂₅ is distributed

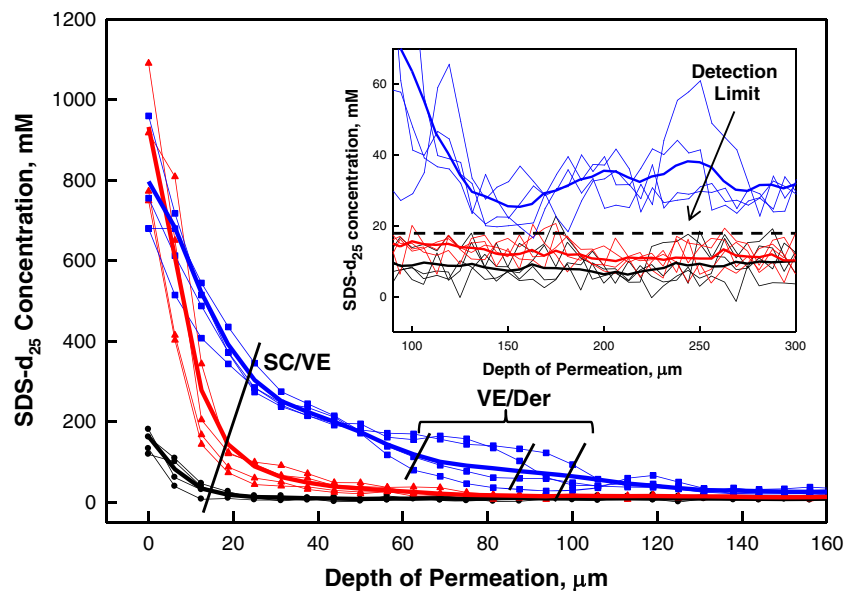


Fig. 5 Sample depth profiles of SDS-d₂₅ concentrations in human skin from different lateral skin positions treated for 3 (•), 24 (▲), and 40 h (■) at 34 °C. The data points from the same lateral position in skin are connected with lines of the same color for better presentation. The bold lines are the average SDS-d₂₅ concentration depth profiles for the entire image after each treatment. The inset is the SDS-d₂₅ concentration in the deeper region of skin, 100-300 μm beneath the surface. Symbols for each data point are omitted in the inset.

more or less evenly throughout the dermis at a concentration of ~ 32 mM (see Fig. 5 inset). As noted in Fig. 5, the line profiles display a range of positions of the VE/Der boundary due to the undulations of the papillary dermis (Fig. 3). As with most dermal transport studies, the thermodynamics and kinetics of the SDS-d₂₅ permeation cannot be deconvoluted in these experiments. The resultant SDS-d₂₅ concentration observed in the skin is determined by both the solubility and diffusivity. Thermodynamically, these SDS-d₂₅ concentration profiles are presumably influenced by the variation in SDS-d₂₅ partition coefficients across different skin regions. Kinetically, the different regions of skin present different barriers to SDS-d₂₅ permeation, with the most effective barrier (most rapid concentration decrease) present in the SC, and a possible secondary barrier at the epidermal/dermal junction (discontinuity in concentration profile), while the dermis seems to provide minimal barrier function to SDS-d₂₅ permeation. It is noted that the epidermal/dermal junction is conventionally believed to provide a barrier for macromolecules and cell movements while being permeable to small molecules (29).

Endogenous SC lipid structural properties can be probed by analyzing the CH₂ acyl chain stretching vibrations in the IR spectra. As mentioned above, the $\nu_{\text{sym}}\text{CH}_2$ stretching frequency is a sensitive measure of lipid acyl chain conformational order; the lower the frequency, the greater the order. These frequencies are also slightly affected by lipid packing. Images depicting the $\nu_{\text{sym}}\text{CH}_2$ frequency for porcine and human SC exposed to various SDS-d₂₅ treatment conditions together with untreated controls are presented in Fig. 6. For the untreated control samples, the average lipid acyl chain conformational order within the human SC (with sebum removed by tape stripping) is slightly higher with an average $\nu_{\text{sym}}\text{CH}_2$ frequency of 2849.2 cm^{-1} compared to that of 2849.8 cm^{-1} for porcine SC. Slightly lower $\nu_{\text{sym}}\text{CH}_2$ frequencies in the SC are also observed for all the SDS-d₂₅ treated human compared to porcine samples. It is more difficult to access the effects of SDS-d₂₅ treatment temperature and time on SC lipid order. SDS-d₂₅ treatment slightly increased $\nu_{\text{sym}}\text{CH}_2$ frequency for porcine SC only following 3 h incubation at $34\text{ }^\circ\text{C}$ compared to the porcine control, whereas human SC treated for 24 h and 40 h at $34\text{ }^\circ\text{C}$ display a slight increase in frequency compared to its control sample.

To evaluate the effect of SDS-d₂₅ on keratin structure, the conformation-sensitive Amide I and II spectral regions were monitored in the SC. As an example, prior studies from the Rutgers laboratory (27) (Fig. 7a) revealed large changes in both the Amide I and II band contours of isolated corneocytes following DMSO treatment, which were consistent with a major α -helix to β -sheet interconversion. Such changes in the Amide spectral region were mostly reversible following corneocyte rehydration. The sensitivity

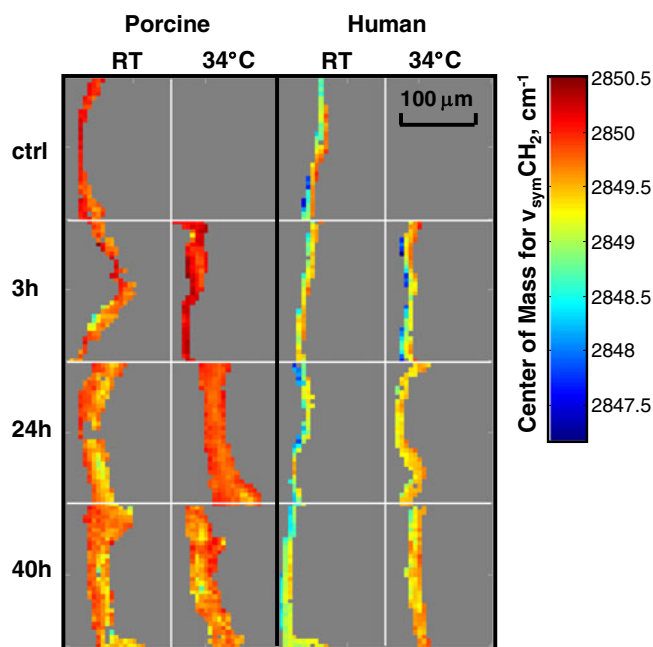


Fig. 6 IR image planes depicting intercellular lipid order probed by center of mass frequencies for the $\nu_{\text{sym}}\text{CH}_2$ in SC regions following various SDS-d₂₅ treatment conditions along with an untreated control for porcine skin and a tape stripped (two tape strips) control for human skin. Treatment conditions are noted in the figure. The SC region was delineated by factor analysis as shown in Fig. 3.

of the Amide spectral region to keratin structure changes was thereby proven.

In contrast to the large perturbation caused by DMSO, SDS-d₂₅ causes at most, small changes in the Amide I band contour. Averaged spectra of the Amide I and II region from human SC before and after SDS-d₂₅ treatment at $34\text{ }^\circ\text{C}$ along with 24 h PBS treatment at $34\text{ }^\circ\text{C}$ are shown in Fig. 7b. Similar changes in this spectral region following the same SDS-d₂₅ treatment conditions were observed for porcine skin (data not shown). Spectra are baseline corrected between $1,478$ and $1,722\text{ cm}^{-1}$ and normalized to the Amide I peak height to account for sample-to-sample variation in protein content. Band narrowing on the low frequency side of the Amide I contour and a decrease of the Amide II/Amide I peak height ratio was observed following PBS treatment for 24 h at $34\text{ }^\circ\text{C}$. No additional perturbation was observed when SDS was present. The origin of these changes is beyond the scope of this manuscript and is currently being investigated.

Besides their utility as intensity markers for SDS-d₂₅ permeation, the CD₂ stretching frequencies are also valuable for tracking chain conformational order in SDS-d₂₅. Figure 8a shows the $\nu_{\text{sym}}\text{CD}_2$ frequency of an SDS-d₂₅ solution at 9 times the CMC and averaged frequencies for SDS-d₂₅ that has permeated into porcine and human SC under a variety of treatment conditions. Significantly lower frequencies were observed for the SDS-d₂₅ acyl chains when

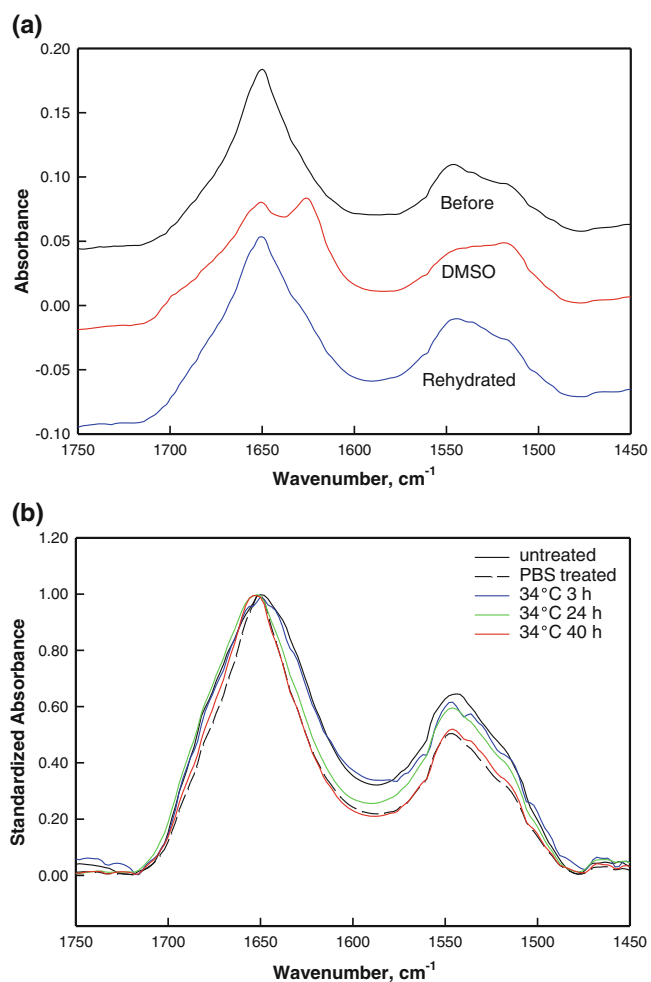


Fig. 7 The Amide I and II contours of (a) isolated corneocytes before (black) and after (red) treatment with dimethyl sulfoxide (DMSO) along with the spectrum after rehydration (blue); (b) average spectra of the SC region of human skin: untreated (solid black), PBS treatment for 24 h at 34 °C (dash black), and SDS-d₂₅ treatment for 3 (blue), 24 (green) and 40 h (red) at 34 °C. Spectra are normalized to Amide I peak height and baseline corrected over the 1,478–1,722 cm⁻¹ region.

the surfactant was present in the SC compared to its micellar solutions. The intercellular SC lipids clearly have an ordering effect on the permeated SDS-d₂₅. The human SC lipids have stronger ordering effects on SDS compared to porcine SC lipids, as shown by the lower $\nu_{\text{sym}}\text{CD}_2$ frequency. Significantly smaller effects were noted in human skin for the RT 3 h treatment than for longer incubation times, indicating that at room temperature, SDS-d₂₅ chain ordering by SC lipids proceeds more slowly than its penetration. SDS-d₂₅ acyl chains in the SC were much less ordered when skin was treated at 34 °C for 24 h or 40 h, compared to room temperature for the same incubation times. Since the chain order of SDS-d₂₅ is affected by SC lipid structure, along with the temperature effect on lipid packing, these observations tend to indicate a more severe disruption of the endogenous SC lipid acyl chain

conformational order and/or packing at higher temperatures caused by the SDS-d₂₅ and is in agreement with the slightly higher endogenous $\nu_{\text{sym}}\text{CH}_2$ frequency for human SC treated at 34 °C shown in Fig. 6. This suggests that $\nu_{\text{sym}}\text{CD}_2$ frequency from SDS-d₂₅ may serve as a sensitive probe of SC lipid order.

Images of SDS-d₂₅ acyl chain order in the SC, VE and dermis are shown in Fig. 8b. Compared to the ordering effects of the SC on the SDS-d₂₅ chains, the VE and dermis have a smaller effect, presumably due to the lack of highly ordered lipid structure in those skin regions. As noted on the scale bar in Fig. 8b, the $\nu_{\text{sym}}\text{CD}_2$ frequency of the SDS-d₂₅ in dermis is close to that in solution.

DISCUSSION

A primary focus of skin biology, pharmacology, and biophysics is to develop tracking methods for the permeation and distribution of exogenous agents applied to skin. Franz or similar diffusion cells are typically used to apply exogenous agents to skin. Detection and quantification of the agents following permeation is commonly accomplished via HPLC or radioactivity measurements of extracted material from isolated skin regions (SC, VE and dermis) and of the solution from the receptor chamber. These approaches provide excellent detection sensitivity but very limited spatial resolution. Alternatively, tape stripping can be applied to provide depth dependent information in the SC region, albeit with inherent ambiguity as to the actual depth without an ancillary method to correct the amount of SC removed by each tape strip. The cohesive strength of the SC increases with depth (30) and fewer corneocytes are removed with progressive tape stripping from outer to inner layers (31). Dauskardt (32) quantified the resistance of isolated SC to delamination and determined that the delamination energy increases significantly from $\sim 3 \text{ J/m}^2$ for the top SC layers to $\sim 15 \text{ J/m}^2$ for inner layers. Cryo-microtoming is also used to segment skin regions and offers depth resolved permeation data (33), but microtoming parallel to skin surface is challenging. In addition, these approaches provide only a depth profile.

Several microscopic techniques have also been used to study permeation. Confocal microscopy provides a useful means to image changes in skin structure upon permeation (34,35) but does not provide concentration information nor can it identify particular chemical entities. Confocal fluorescence imaging of an exogenous species often requires a fluorescent label for detection. The permeation properties of the exogenous agent are likely to be altered by addition of the label. In comparison, IR and Raman imaging approaches offer several advantages. The combination of molecular structure information from both the exogenous agent and the endogenous skin components offers a unique

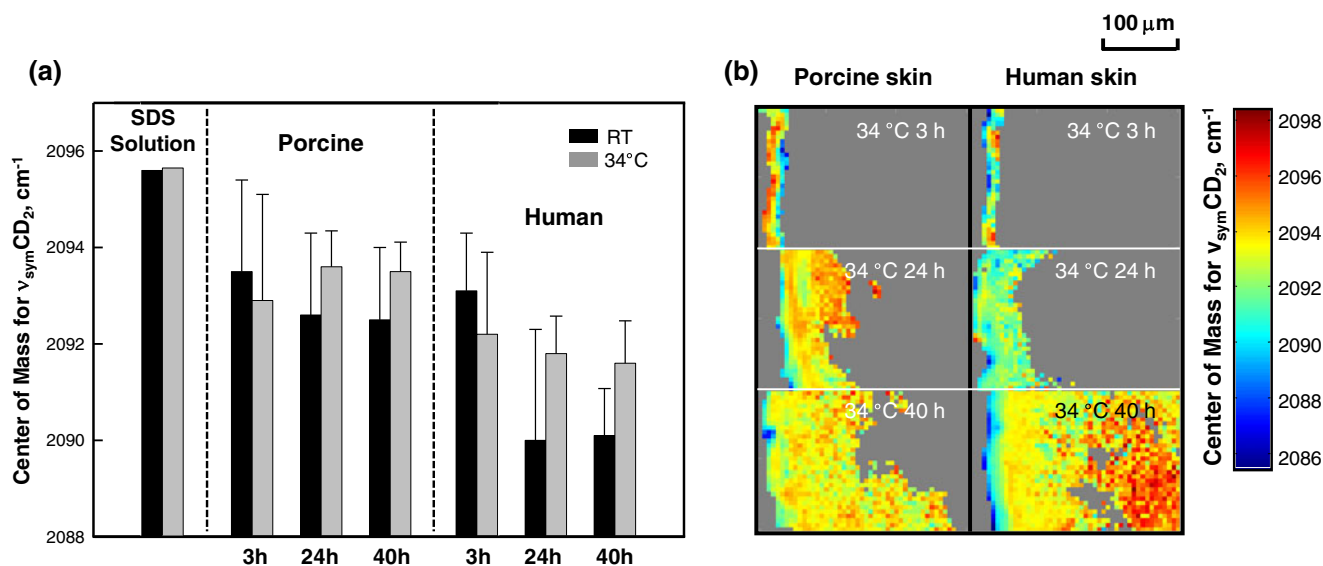


Fig. 8 (a) IR center of mass frequency for the $\nu_{\text{sym}}\text{CD}_2$ of SDS-d₂₅ in aqueous solution and in the SC region of porcine and human skin treated with SDS-d₂₅ for 3, 24, and 40 h at room temperature (black) and 34 °C (gray). We note that the error bars (standard deviation) do not wholly reflect lack of precision in the measurements but rather predominantly arise from heterogeneity in the skin. (b) Image planes showing the center of mass frequency of $\nu_{\text{sym}}\text{CD}_2$ in both porcine and human skin after treatment for 3, 24 and 40 h at 34 °C. The average $\nu_{\text{sym}}\text{CD}_2$ frequency for the micellar SDS-d₂₅ solution is marked as the black line on the scale bar.

opportunity to track the spatial distribution of the effect of the exogenous material on skin barrier properties along with other potential structural alterations. In addition, confocal Raman and IR imaging provide spatial resolution of ~2 or 10 μm , respectively, somewhat worse than confocal fluorescence microscopy but without the requirement for fluorescent labels. Finally, changes in the concentrations of the exogenous species are monitored from band intensities, and as shown in Fig. 4, IR imaging can provide essentially absolute concentrations with an accuracy that is determined by the transferability of the extinction coefficients and the thickness of skin sections.

The current work presents one of the first reports delineating the spatial distribution of the concentration of a permeant, SDS, across the SC, VE and dermis. SDS-d₂₅ concentrations as high as 1,000 mM in the SC compared to 40 mM in the donor compartment are observed (Fig. 4), a result consistent with partition coefficients of ~500 measured by Downing *et al.* (36) for SDS (0.1 wt%) partitioning into liposomes constructed from stratum corneum lipids. Evidently, the SC has a substantial concentrating effect on SDS-d₂₅. In addition, studies of SDS depth profiles in the SC by tape stripping (13,37) report a rapid decrease in concentration with depth, also consistent with the current work (Fig. 5).

One useful application of our quantitative IR imaging data is the ability to perform a mass balance calculation. A description of our procedure and assumptions, along with a table of detailed mass balance results are provided in the [Supplementary Material](#). Overall, our results indicate that we have detected 5–16 % of the applied dosage in porcine skin and 1–17 % in human skin, excluding the 34 °C 40 h treatment.

Comparing the current results with the investigations of Fullerton *et al.* (38), who utilized Franz diffusion cells and patch test techniques combined with radioactivity-based detection methods to track SDS permeation, is useful. While studies of permeation in deeper skin layers are scarce, Fullerton reports significant SDS levels in the dermis, with substantial variation among donors. The total amount of SDS in the epidermis was 2–30-fold greater than in the dermis following 24 h of patch application. More SDS was found in the lower regions of skin and in the recipient phase after 48 h compared to 24 h. Generally, the results are qualitatively consistent with the current work (Figs. 4 and 5 and mass balance in [Supplementary Material](#)) with the added information concerning SDS concentrations and more detailed spatial distributions now available from the IR imaging experiments.

The different temperature effects are manifest in the 24 h incubation experimental results (see Fig. 4, 3rd row) in which the human skin RT experiment displays significantly less SDS-d₂₅ in the SC compared to the remaining 3 panels. This observation is consistent with prior studies from this lab and others (6,7,21,39) reporting the presence of a larger proportion of orthorhombically packed lipids in human SC at RT. In the current work, we also observed that porcine SC lipids are more disordered than human at RT as shown by the endogenous $\nu_{\text{sym}}\text{CH}_2$ frequencies imaged in Fig. 6. In addition, the averaged $\nu_{\text{sym}}\text{CD}_2$ frequencies in the SC displayed in Fig. 8a further suggest that porcine SC lipids are less ordered, as they display weaker ordering effects on SDS-d₂₅ chains compared to human SC. Overall, it seems quite likely that the orthorhombic packing in

human SC presents a stronger barrier to SDS-d₂₅ permeation than the predominance of hexagonal packing present in porcine SC.

Although it would normally be of substantial interest to fully analyze the effects of SDS-d₂₅ on SC lipid packing and conformational order, the technology employed in the current study limits the scope of the information available (see [Materials and Methods](#)). $\nu_{\text{sym}}\text{CH}_2$ was the only accessible region available to track endogenous SC lipid chain structural properties. This parameter failed to provide statistically significant conclusions regarding the effects of SDS-d₂₅ treatment time and temperature on SC lipid order. Several possibilities for this observation are suggested below. First, SDS may affect SC lipid structure by modifying packing order more significantly than conformational order. Second, lipid lamellar phases, whose IR spectra/structure correlations are unknown but identified by small angle x-ray diffraction (2,3), may be perturbed by SDS. Lastly, the amount of SC lipids affected by SDS may be too small to detect.

An alternative approach, using the $\nu_{\text{sym}}\text{CD}_2$ frequencies of SDS-d₂₅ to probe the SC lipid environment, is proposed. As shown in Fig. 4, SDS-d₂₅ permeates beyond both porcine and human SC at 34 °C after 24 and 40 h treatment. The CD₂ frequencies for these two samples in the SC region are considerably higher than their counterparts at room temperature (Fig. 8a). This shift in SDS-d₂₅ conformational order may be related to the damaging effects of SDS-d₂₅ on the skin barrier, especially on the SC lipid organization. Coupled with the lack of a major SDS-induced perturbation of keratin structure (Fig. 7), an intercellular pathway is tentatively suggested. At short times or (relatively) low temperature, lower amounts of SDS-d₂₅ permeate into skin and its acyl chain order increases due to mixing with the ordered SC lipids. As mentioned earlier, at relatively higher temperature (34 °C) SDS-d₂₅ permeation may be enhanced by the different state of the endogenous lipid packing in the SC. The increased amount of SDS-d₂₅ in the SC combined with faster kinetics of skin/SDS-d₂₅ interaction at higher temperature lead to more severe disruption of the endogenous SC lipid acyl chain conformational order and/or packing. As a result, the ordering effect of SC on SDS-d₂₅ acyl chains diminishes. This is consistent with our parallel study (21) of isolated SC by transmission IR, which demonstrated that the most significant effects of SDS-d₂₅ incorporation were the removal and/or disordering of SC lipids packed in orthorhombic phases and the lowering of the orthorhombic to hexagonal phase transition temperature.

The mode of surfactant permeation has long been debated. It had been generally accepted that SDS permeates as a monomer. Polymers and milder co-surfactants have been added to SDS to decrease the irritation associated with a pure SDS system (40–42) by reducing the SDS monomer concentration. Other studies have suggested that the

monomer penetration model doesn't completely explain how SDS damages skin. Moore *et al.* (43) reported that SDS increased transepidermal current at concentrations above the CMC. James-Smith *et al.* (44) found that skin conductivity and permeated SDS concentration in skin correlated with the concentration of monomers and submicellar aggregates. The current IR imaging data offer some insights into this issue. As noted above, the methylene stretching frequency of SDS-d₂₅ is sensitive to chain conformational ordering. At temperatures above the Krafft point (~18 °C), the SDS-d₂₅ chains in micellar solutions are fairly disordered with a $\nu_{\text{sym}}\text{CD}_2$ frequency of ~2,096 cm⁻¹. As shown in Fig. 8a, SDS-d₂₅ methylene stretching frequencies are several wavenumbers lower in the SC compared to solution phase, indicating that the SDS-d₂₅ residing in the SC exists in a more ordered state than in micelles. Within the dermis, however, the range of $\nu_{\text{sym}}\text{CD}_2$ frequencies (Fig. 8b) is similar to that observed for the micellar solutions. With the average SDS-d₂₅ dermal concentration (~36.9 mM) greater than the CMC, we cannot rule out the reforming of micelles in the dermis, although this does seem unlikely.

CONCLUSION

This study takes the advantage of confocal Raman microscopy and IR imaging to image and quantify the spatial distribution of SDS in skin. SDS distributes heterogeneously among skin regions and within each skin region. The preferential partitioning of SDS into skin resulted in an SDS concentration in the SC higher than the donor solution. Substantial SDS levels are also found in the dermal region after a prolonged incubation time. The availability of a complete vibrational spectrum at each sampling point of an IR and confocal Raman image offers unique molecular level information concerning the changes in physical properties of SDS and its damaging effects on the skin barrier. Careful examination of these data also provides valuable insights into the surfactant permeation mode and delivery pathway. This study suggests SDS exists in a more ordered state in the SC compared to its micellar form and offers evidence to support an intercellular lipid permeation pathway for SDS in the SC.

ACKNOWLEDGMENTS & DISCLOSURES

This work was generously supported by Johnson & Johnson Consumer Companies, Inc.

Open Access This article is distributed under the terms of the Creative Commons Attribution License which permits any use, distribution, and reproduction in any medium, provided the original author(s) and the source are credited.

REFERENCES

- Elias PM. Structure and function of the stratum-corneum permeability barrier. *Drug Dev Res.* 1988;13(2–3):97–105.
- Bouwstra J, Gooris G, Vanderspek J, Bras W. Structural investigations of human stratum-corneum by small-angle X-ray scattering. *J Invest Dermatol.* 1991;97(6):1005–12.
- Bouwstra JA, Gooris GS, Weerheim A, Kempenaar J, Ponc M. Characterization of stratum corneum structure in reconstructed epidermis by X-ray diffraction. *J Lipid Res.* 1995;36(3):496–504.
- Krill SL, Knutson K, Higuchi WI. The stratum-corneum lipid thermotropic phase-behavior. *Biochim Biophys Acta.* 1992;1112(2):281–6.
- Ongpipattanakul B, Francoeur ML, Potts RO. Polymorphism in stratum corneum lipids. *Biochim Biophys Acta.* 1994;1190(1):115–22.
- Pensack RD, Michniak BB, Moore DJ, Mendelsohn R. Infrared kinetic/structural studies of barrier reformation in intact stratum corneum following thermal perturbation. *Appl Spectrosc.* 2006;60(12):1399–404.
- Boncheva M, Damien F, Normand V. Molecular organization of the lipid matrix in intact Stratum corneum using ATR-FTIR spectroscopy. *Biochim Biophys Acta.* 2008;1778(5):1344–55.
- Wertz PW, Downing DT. Epidermal lipids. In: Goldsmith LA, editor. *Physiology, biochemistry, and molecular biology of the skin.* New York: Oxford University Press, Inc.; 1991. p. 205–36.
- Ponc M, Weerheim A, Lankhorst P, Wertz P. New acylceramide in native and reconstructed epidermis. *J Invest Dermatol.* 2003;120(4):581–8.
- Ghosh S, Hornby S, Grove G, Zerwick C, Appa Y, Blankschtein D. Ranking of aqueous surfactant-humectant systems based on an analysis of *in vitro* and *in vivo* skin barrier perturbation measurements. *J Cosmet Sci.* 2007;58(6):599–620.
- Lee CH, Maibach HI. The sodium lauryl sulfate model: an overview. *Contact Dermatitis.* 1995;33(1):1–7.
- Aramaki J, Loffler C, Kawana S, Effendy I, Happel R, Loffler H. Irritant patch testing with sodium lauryl sulphate: interrelation between concentration and exposure time. *Br J Dermatol.* 2001;145(5):704–8.
- de Jongh CM, Jakasa I, Verberk MM, Kezic S. Variation in barrier impairment and inflammation of human skin as determined by sodium lauryl sulphate penetration rate. *Br J Dermatol.* 2006;154(4):651–7.
- Gloor M, Senger B, Langenauer M, Fluhr J. On the course of the irritant reaction after irritation with sodium lauryl sulphate. *Skin Res Technol.* 2004;10(3):144–8.
- Leveque JL, Derigal J, Saintleger D, Billy D. How does sodium lauryl sulfate alter the skin barrier function in man? A multiparametric approach. *Skin Pharmacol.* 1993;6(2):111–5.
- van der Valk PG, Nater JP, Bleumink E. Skin irritancy of surfactants as assessed by water vapor loss measurements. *J Invest Dermatol.* 1984;82(3):291–3.
- de Jongh CM, Verberk MM, Spiekstra SW, Gibbs S, Kezic S. Cytokines at different stratum corneum levels in normal and sodium lauryl sulphate-irritated skin. *Skin Res Technol.* 2007;13(4):390–8.
- Torma H, Lindberg M, Berne B. Skin barrier disruption by sodium lauryl sulfate-exposure alters the expressions of involucrin, transglutaminase 1, profilaggrin, and kallikreins during the repair phase in human skin *in vivo*. *J Invest Dermatol.* 2008;128(5):1212–9.
- Denda M. Epidermal proliferative response induced by sodium dodecyl sulphate varies with environmental humidity. *Br J Dermatol.* 2001;145(2):252–7.
- Ghosh S, Blankschtein D. The role of sodium dodecyl sulfate (SDS) micelles in inducing skin barrier perturbation in the presence of glycerol. *J Cosmet Sci.* 2007;58(2):109–33.
- Saad P, Flach CR, Walters RM, Mendelsohn R. Infrared spectroscopic studies of sodium dodecyl sulphate permeation and interaction with stratum corneum lipids in skin. *Int J Cosmet Sci.* 2012;34(1):36–43.
- Lasch P, Pacifico A, Diem M. Spatially resolved IR microspectroscopy of single cells. *Biopolymers.* 2002;67(4–5):335–8.
- Cotte M, Dumas P, Besnard M, Tchoreloff P, Walter P. Synchrotron FT-IR microscopic study of chemical enhancers in transdermal drug delivery: example of fatty acids. *J Control Release.* 2004;97(2):269–81.
- Mendelsohn R, Flach CR, Moore DJ. Determination of molecular conformation and permeation in skin via IR spectroscopy, microscopy, and imaging. *Biochim Biophys Acta.* 2006;1758(7):923–33.
- Tfayli A, Piot O, Manfait M. Confocal Raman microspectroscopy on excised human skin: uncertainties in depth profiling and mathematical correction applied to dermatological drug permeation. *J Biophotonics.* 2008;1(2):140–53.
- Forster M, Bolzinger MA, Ach D, Montagnac G, Briancon S. Ingredients tracking of cosmetic formulations in the skin: a confocal Raman microscopy investigation. *Pharm Res.* 2011;28(4):858–72.
- Zhang GJ, Moore DJ, Flach CR, Mendelsohn R. Vibrational microscopy and imaging of skin: from single cells to intact tissue. *Anal Bioanal Chem.* 2007;387(5):1591–9.
- Mendelsohn R, Flach CR, Moore DJ. Determination of molecular conformation and permeation in skin via IR spectroscopy, microscopy, and imaging. *Biochim Biophys Acta Biomembr.* 2006;1758(7):923–33.
- Briggaman RA, Wheeler Jr CE. The epidermal-dermal junction. *J Invest Dermatol.* 1975;65(1):71–84.
- Chapman SJ, Walsh A, Jackson SM, Friedmann PS. Lipids, proteins and corneocyte adhesion. *Arch Dermatol Res.* 1991;283(3):167–73.
- Bothwell JW. Adhesion to skin: effects of surgical tapes on skin. In: Marly RS, editor. *Adhesion in biological systems.* New York: Academic; 1970.
- Wu KS, Stefik MM, Ananthapadmanabhan KP, Dauskardt RH. Graded delamination behavior of human stratum corneum. *Biomaterials.* 2006;27(34):5861–70.
- Wagner H, Kostka KH, Lehr CM, Schaefer UF. Drug distribution in human skin using two different *in vitro* test systems: comparison with *in vivo* data. *Pharm Res.* 2000;17(12):1475–81.
- Ghosh S, Kim D, So P, Blankschtein D. Visualization and quantification of skin barrier perturbation induced by surfactant-humectant systems using two-photon fluorescence microscopy. *J Cosmet Sci.* 2008;59(4):263–89.
- Wu X, Biatry B, Cazeneuve C, Guy RH. Drug delivery to the skin from sub-micron polymeric particle formulations: influence of particle size and polymer hydrophobicity. *Pharm Res.* 2009;26(8):1995–2001.
- Downing DT, Abraham W, Wegner BK, Willman KW, Marshall JL. Partition of sodium dodecyl sulfate into stratum-corneum lipid liposomes. *Arch Dermatol Res.* 1993;285(3):151–7.
- Patil S, Singh P, Sarasour K, Maibach H. Quantification of sodium lauryl sulfate penetration into the skin and underlying tissue after topical application—pharmacological and toxicological implications. *J Pharm Sci.* 1995;84(10):1240–4.
- Fullerton A, Broby-Johansen U, Agner T. Sodium lauryl sulphate penetration in an *in vitro* model using human skin. *Contact Dermatitis.* 1994;30(4):222–5.
- Caussin J, Gooris GS, Janssens M, Bouwstra JA. Lipid organization in human and porcine stratum corneum differs widely, while lipid mixtures with porcine ceramides model human stratum corneum lipid organization very closely. *Biochim Biophys Acta.* 2008;1778(6):1472–82.
- Fevola MJ, LiBrizzi JJ, Walters RM. Reducing irritation potential of surfactant-based cleansers with hydrophobically-modified polymers. *Polym Prepr.* 2008;49(2):671–2.

41. Moore P, Shiloach A, Puvvada S, Blankschtein D. Penetration of mixed micelles into the epidermis: effect of mixing sodium dodecyl sulfate with dodecyl hexa(ethylene oxide). *J Cosmet Sci.* 2003;54(2):143–59.
42. Walters RM, Fevola MJ, LiBrizzi JJ, Martin K. Designing cleansers for the unique needs of baby skin. *Cosmet Toilet.* 2008;123(12):53–60.
43. Moore P, Puvvada S, Blankschtein D. Challenging the surfactant monomer skin penetration model: penetration of sodium dodecyl sulfate micelles into the epidermis. *J Cosmet Sci.* 2003;54(1):29–46.
44. James-Smith MA, Hellner B, Annunziato N, Mitragotri S. Effect of surfactant mixtures on skin structure and barrier properties. *Ann Biomed Eng.* 2011;39(4):1215–23.