



RESEARCH ARTICLE

# Relating landscape ecological metrics with public survey data on perceived landscape quality and place attachment

Flurina M. Wartmann · C. B. Stride · F. Kienast · M. Hunziker

Received: 20 July 2020 / Accepted: 25 June 2021 / Published online: 6 July 2021  
© The Author(s) 2021

## Abstract

**Context** It is essential for policy-making and planning that we understand landscapes not only in terms of landscape ecological patterns, but also in terms of their contribution to people's quality of life.

**Objectives** In this study our objective is to test relationships between landscape ecology and social science indicators, by investigating how landscape patterns are linked to people's perception of landscape quality.

**Methods** To assess public views on landscapes we conducted a survey among 858 respondents in Switzerland. We combined this survey data on perceived landscape quality and place attachment with landscape metrics (e.g. diversity, naturalness of

land cover, urban sprawl, fragmentation) in a statistical model to test hypotheses about the relationships between the different variables of interest.

**Results** Our results illustrate the contribution of both landscape composition metrics and social science indicators to understanding variation in people's perception and assessment of landscape. For example, we found the landscape ecology metrics on urban sprawl and fragmentation to be a negative predictor of overall satisfaction with landscape, and that perceived landscape quality positively predicted place attachment and satisfaction with the municipality landscape.

**Conclusions** This study highlights the importance and feasibility of combining landscape ecology metrics and public survey data on how people perceive, value and relate to landscape in an integrated manner. Our approach has the potential for implementation across a variety of settings and can contribute to holistic and integrated landscape assessments that combine ecological and socio-cultural aspects.

**Supplementary Information** The online version of this article (doi:<https://doi.org/10.1007/s10980-021-01290-y>) contains supplementary material, which is available to authorized users.

F. M. Wartmann (✉)  
School of Geosciences, University of Aberdeen, St Mary's, Elphinstone Road, Aberdeen AB24 3UF, UK  
e-mail: flurina.wartmann@abdn.ac.uk

F. M. Wartmann · F. Kienast · M. Hunziker  
Swiss Federal Institute for Forest, Snow and Landscape Research (WSL), Zürcherstrasse 111, 8903 Birmensdorf, Switzerland

C. B. Stride  
IWP, Management School, University of Sheffield, Sheffield S10 1FL, UK

**Keywords** Landscape ecology · Landscape assessment · Visual landscape quality · Place attachment · Multilevel modelling

## Introduction

Understanding how people perceive and value different landscapes is essential for informing landscape policies that reflect societal needs (Butler 2016). The importance of assessing contributions of nature and landscapes to people's quality of life is increasingly recognised through frameworks such as ecosystem services and nature's contributions to people (Bieling 2014; Gould et al. 2015; Scholte et al. 2015; Díaz et al. 2018). However, whilst ecological metrics are well-advanced, assessment of how the public perceives and values landscapes is comparatively underdeveloped (Gobster et al. 2007; Fry et al. 2009; Cassatella and Peano 2011; Chan et al. 2012; Milcu et al. 2013; Wartmann and Purves 2018), particularly the relationship between a landscape's ecological and structural characteristics and public perception and values. Understanding how landscape changes—such as urbanisation or agricultural abandonment—affect people's perception and attachment to landscapes is important to inform landscape planning and policy-making (Frick and Buchecker 2008; Hunziker et al. 2008; Tobias and Müller Wahl 2013).

We take this as a starting point for this study, in which we investigate the relationship between a landscape's ecological features and the public's opinion of landscape. We examine whether physical landscape elements and structures relate to how people assess landscapes, and whether demographic background influences an individual's assessment of the landscape they live in. To address these research questions, we developed and tested a model linking landscape-ecological metrics, respondents' socio-demographic profiles, and social-science indicators including perceived landscape quality, and place attachment. The novelty of this study lies in the simultaneous investigation of such individual and landscape-level relationships, specifically via acknowledging the hierarchical data structure of people nested within landscapes and utilising advanced quantitative methodology in the form of multilevel modelling.

We first unpack—and briefly introduce approaches for assessing—the concepts of landscape ecology and methods for assessing landscape perception and interpretation.

## Context

The European Landscape Convention (ELC) defines landscape as 'an area, as perceived by people, whose character is the result of the action and interaction of natural and/or human factors' (Council of Europe 2000). Signatory member countries of the ELC pledge to record the state and changes of the landscapes in their territory and to set quality objectives for landscape development. For example, the Swiss Landscape Monitoring programme (LABES) was conceptualised according to the requirement for integrated monitoring of landscapes set out in the ELC. In LABES, quantitative social and physical indicators aim to provide a holistic assessment of the state of Switzerland's landscapes and their development over time. The indicators cover both physical aspects of the landscape (e.g., urban sprawl, fragmentation) and social aspects (e.g., perceived visual landscape quality).

### Landscape ecology dimensions and metrics

The physical landscape itself, consisting of different features and their composition, is the basis from which any perception and interpretation of landscape arises (Kühne 2017). Landscape ecology measures assess this aspect using a variety of dimensions and associated metrics. Landscape pattern, for example, is defined as the spatial heterogeneity found where environmental factors are unevenly distributed (Turner 2005). Objective metrics for landscape pattern are well developed, and commonly based on *composition* or *configuration* (Gustafson 1998). Landscape composition—the type and amount of land cover present—is measured by the Shannon–Weaver diversity index (Ortiz-Burgos 2016), or the proportion of an area occupied by certain habitats (Turner and Gardner 2001). Landscape configuration metrics measure how land cover is distributed in space, and include indicators of diversity, connectivity and fragmentation—for example, to what extent do human elements (streets, railways) break up ecosystems into smaller patches (Jaeger et al. 2008; Llausàs and Nogué 2012). Other landscape ecology dimensions include determining the degree of human influence or naturalness (Walz and Stein 2014). Using established metrics to measure landscape ecological dimensions enable the

testing of relationships between these dimensions and respondents' landscape perception and interpretation.

### Landscape perception and interpretation

Daniel (2001, p. 268) states that 'landscape quality arises from the relationship between properties of the landscape and the effects of those properties on human viewers'. Active debate in the study of landscape quality revolves around the nature and the assessment of this relationship. Both objectivist and subjectivist approaches have been identified (Lothian 1999).

Objectivist approaches assume that landscape quality is an objective property of landscapes that can be assessed by experts, whereas the subjectivist framework advocates that landscape quality is subjective and arises from the interactions of observers with the landscape and essentially lies in the 'eyes of the beholder' (Lothian 1999). In practice, this debate has been resolved to some extent by acknowledging that landscape quality is a function of both landscape features themselves *and* their perception by the observers (Daniel 2001), a conclusion that is important for landscape policy-making and planning, as well as for place branding (Tobias and Müller Wahl 2013; de San Eugenio Vela, 2017). This so-called "perceived landscape quality" can, in turn, be conceptualized in terms of both (i) the direct visual perception of landscape, as well as (ii) the interpretation of landscape (Hunziker et al. 2007; Kühne 2017).

### Perception of landscape

Concepts that relate directly to perception are openness of views and *complexity* (Hunziker and Kienast 1999; Fry et al. 2009; Ode et al. 2010). According to Appleton (1975), humans generally prefer wide, open views. Complexity is defined as the visual diversity and richness of landscape elements: in information processing theory complexity is seen as a positive predictor of landscape preference, in combination with the three concepts of coherence, mystery and legibility (Kaplan and Kaplan 1989). Landscape complexity has both been measured as a perception indicator by asking respondents to rate visual stimuli or verbal statements about landscapes, as well as through landscape metrics (Hunziker and Kienast 1999; Ode et al. 2008, 2010; Kienast et al. 2015).

### Interpretation of landscape

Similarly, when conceptualising how landscape is interpreted, we can distinguish two principal dimensions: a personal/individual interpretation of landscape and a social/cultural interpretation (Tveit et al. 2006). The scientific literature is primarily focused on the personal dimension of interpretation. We will initially introduce different social-science indicators for assessing concepts at the personal/individual level.

*Personal–individual interpretation of landscape* Bourassa (1988) considered assessing how beautiful a landscape is seen in the eyes of a beholder an important aspect of landscape aesthetics. Ratings of perceived landscape beauty have been used as a proxy indicator for overall visual landscape quality (Wartmann et al. 2021a), but multiple distinct elements of interpreted landscape have also been identified within the environmental psychology literature. The concept of *fascination* is central to Attention Restoration Theory (Kaplan 1995), encapsulating the idea that landscapes can restore our attentional capacity by effortlessly capturing our attention (Kaplan 1995) and thus aid recovery from mental fatigue (Hartig et al. 1991; Ulrich et al. 1991). Twigger-Ross and Uzzell (1996) promote *distinctiveness*—how special a landscape is compared to other landscapes—as one of several components of place identity. Distinctiveness was later linked to the concept of imageability laid out by Tveit et al. (2006), defined as qualities or elements that make landscapes distinguishable and memorable. In a policy-context, the perceived distinctiveness of landscapes can contribute to decision-making on how to further develop landscapes while maintaining their particularities. The concept of *authenticity* refers to the perceived appropriateness of elements of the landscape in relation to the place or region (Kianicka et al. 2006; Kienast et al. 2015). While authenticity is most often related to works of art or built heritage in urban environments (Jivén and Larkham 2003), it is also applicable to assess landscapes.

Regarding the influence of socio-economic background on landscape perception and interpretation, in earlier work the 'consensus assumption' was prevalent, i.e. that individual differences are small and similarities between people outweigh differences between social, cultural or linguistic groups (Hartig

and Evans 1993). However, this assumption was later challenged by highlighting that much of the ‘consensus’ found was due to sampling of groups with high potential for consensus: typically white, male, university-educated respondents (Van den Berg et al. 1998). Several studies reported differences related between groups of people that differ with regards to socio-economic, socio-cultural or socio-demographic variables (Strumse 1996; Van den Berg et al. 1998; Gomez-Limon and de Lucio Fernández 1999; Gobster 2002; Dramstad et al. 2006; Natori and Chenoweth 2008; Buijs et al. 2009), highlighting the importance of taking into account socio-demographic control variables.

Furthermore, there has been extensive examination of the bonds and relations that people form with landscapes and places. One concept that has received much attention is *place attachment*, defined as the strength of attachment to meaningful places (Tuan 1974; Lewicka 2011). Such meaningfulness is often ascribed to homes or neighbourhoods (Bonaiuto et al. 1999), but can also refer to wider areas such as municipalities, or much smaller, ‘special places’ within the landscape (Brown and Raymond 2007).

Stedman (2002, 2003) included the alternative concept of *place satisfaction* as a summary evaluative judgement to assess also how satisfied respondents are with a setting in general. Place satisfaction is seen as a different concept to place attachment, because although people may be satisfied with where they live, they don’t necessarily need to be particularly attached to that place (Mesch and Manor 1998).

In terms of the factors that influence satisfaction and place attachment, the duration people lived in a place was consistently found positively associated with place attachment (Lewicka 2011). Furthermore, place attachments formed in childhood were shown to be stronger than those formed later in life (Hay 1998), suggesting the place where one grew up exerts influence on adult place attachment. People having migrated from rural to urban areas were shown to exhibit nostalgia and homesickness for the rural places they grew up in (Smith 2002).

*Socio-cultural interpretations of landscape* In addition to individual aspects of landscape interpretation, studies have also focused on socio-cultural aspects, including meanings and feelings people associate with landscape, for example

tradition or spirituality (Stephenson 2008). The cultural landscape values model by Stephenson (2008) distinguished forms, practices, and relationships. Forms refer to physical, tangible and measurable aspects including historic features, natural landforms, and human-made structures. Practices refer to human activities including recreational behaviour. Such associations with landscape have been highlighted as an important influence on how people perceive and appreciate visual landscape quality (Nassauer 1992; Jorgensen 2011).

However whilst the dimensions or concepts that make up visual landscape quality and non-visual associations with landscape have been assessed as landscape indicators, the relationship between landscape metrics, and how people perceive, interpret, and relate to landscapes has seldom been jointly investigated. In this study, we test relationships between landscape ecology dimensions and respondents’ landscape perception and interpretation, as set out in our hypotheses below.

## Hypotheses

Our hypothesized model revolves around the relationship between how people perceive and interpret the landscape, and landscape’s ecological features. These relationships are important, in that they point towards how variation in and changes to the physical landscape affect how people perceive and interpret landscape, how satisfied they are with it and how attached they feel to it. For instance, place attachment was shown to be linked to place-protective action in the context of landscape change through renewable energy projects (Devine-Wright 2009). Understanding public perception of landscape and landscape change is also important from a monitoring perspective, such as the ELC (Council of Europe 2000), but also more generally, in terms of landscape stewardship of everyday landscapes that are facing a multitude of societal demands from different stakeholders (Plieninger et al. 2015). In the context of the Swiss landscape monitoring program, we focus on Switzerland as a case study to assess these relationships.

We formulated a set of hypotheses at the person-level and landscape-level. We used municipality as a simple proxy for a landscape-level unit. Municipalities are the lowest administrative unit in Switzerland, and are linked to people’s lifeworld and experiences.

Given that we did not collect address data from respondents for privacy reasons, we were unable to use the direct surroundings of where respondents lived. Instead, we use the municipality as spatially clearly defined boundary that many people will be broadly familiar with.

### *Person-level hypotheses*

Our first set of hypotheses focuses on explaining variation in landscape perception between respondents living within the same landscape unit, i.e. municipality. We were particularly interested in relationships between perceived visual landscape quality, place attachment and landscape satisfaction with the landscape in the municipality. These are dimensions that we expect to be influenced by landscape change, e.g. through continued urbanization, or building of infrastructure. Previous studies support the existence of a positive relationship between perceived visual landscape quality and both place attachment (Stedman 2003) and satisfaction with the landscape (Lewicka 2011; Kienast et al. 2012). We encapsulated the relationships between these constructs within the following hypotheses, while controlling for potential confounding influences of age, gender, landscape type of respondents' childhood and accessibility to green spaces:

**H<sub>1a</sub>** A respondent's perception of their municipality's visual landscape quality will positively predict their place attachment to the municipality landscape.

**H<sub>1b</sub>** A respondent's perception of their municipality's visual landscape quality will positively predict their satisfaction with their municipality landscape.

Second, we test the relationship between associations with landscape (non-visual cultural landscape values) held at the individual/personal level and perceived landscape quality, which underlies thinking in landscape architecture and design (Meyer 2008) and can be encapsulated within the following hypotheses:

**H<sub>2</sub>** The extent to which respondents associate their municipality landscape with non-visual cultural landscape values will positively predict their perception of municipality landscape quality.

Together Hypotheses 1 and 2 logically lead to the further hypotheses regarding indirect relationships

between non-visual cultural landscape values and both place attachment and landscape satisfaction:

**H<sub>3a</sub>** The extent to which a respondent associates their municipality landscape with non-visual cultural landscape values will positively predict their attachment to the municipality, with this effect operating indirectly via their perception of visual landscape quality in the municipality.

**H<sub>3b</sub>** The extent to which a respondent associates their municipality landscape with non-visual cultural landscape values will positively predict their satisfaction with their municipality landscape, with this effect operating indirectly via their perception of municipality landscape quality.

### *Municipality-level hypotheses*

Second, we focused on explaining variation in perceived visual landscape quality, landscape satisfaction and place attachment between municipalities. The sprawl and fragmentation associated with urbanisation are typically viewed as negative by residents, particularly in more rural environments (Ströbele and Hunziker 2017). Likewise we would expect a positive effect of the diversity of landscape composition, because landscapes that offer high visual diversity are commonly preferred (Kaplan and Kaplan 1989). We expect to find a negative effect of the extent of agricultural land cover on our three landscape perception outcomes, given that high-productivity agricultural landscapes now common across Switzerland have low aesthetics ratings (Lindemann-Matthies et al. 2010). Finally, public surveys suggest that people are more likely to have a positive perception of landscapes with greater natural land cover and low human impacts (Jackson et al. 2008). Therefore, at the municipality level we tested the following hypotheses pertaining to the effects of landscape configuration and composition discussed above.

**H<sub>4a</sub>** Between-municipality differences in perceived landscape quality will be explained by the municipality characteristics of sprawl (negative relationship), fragmentation (negative), diversity of landscape composition (positive), natural land cover (positive), and extent of agriculture (negative).

**H<sub>4b</sub>** Between-municipality differences in attachment to municipality will be explained by the

municipality characteristics of sprawl (negative), fragmentation (negative), diversity of landscape composition (positive), natural land cover (positive), and extent of agriculture (negative).

**H<sub>4c</sub>** Between-municipality differences in satisfaction with municipality landscape will be explained by the municipality characteristics of sprawl (negative), fragmentation (negative), diversity of landscape composition (positive), natural land cover (positive), and extent of agricultural land cover (negative).

Furthermore, based on Ströbele and Hunziker's (2017) study of differences between how residents perceive landscapes in different types of municipalities, we hypothesise that these landscape configuration and composition effects will explain the relationship between type of landscape (rural vs urban) and appreciation of and attachment to it. That is, rural landscapes will, on average, report higher levels of satisfaction, perceived visual quality and place attachment because they have less sprawl and fragmentation, and more natural land cover:

**H<sub>5a</sub>** Predominant type of municipality (urban vs rural) will impact on perceived landscape quality such that those in rural areas report higher levels, with this effect operating indirectly via the characteristics of sprawl, fragmentation, and natural land cover.

**H<sub>5b</sub>** Predominant type of municipality (urban vs rural) will impact on attachment to municipality, such that those in rural areas report higher levels, with this effect operating indirectly via the characteristics of sprawl, fragmentation, and natural land cover.

**H<sub>5c</sub>** Predominant type of municipality (urban vs rural) will impact on satisfaction with municipality landscape such that those in rural areas report higher levels, with this effect operating indirectly via the characteristics of sprawl, fragmentation, and natural land cover.

### *Cross-level research hypothesis*

Rural residents have been found to exhibit higher levels of place attachment than urban residents (Anton and Lawrence 2014). Integrating the importance of childhood on adult place attachment, we would expect those who grew up in rural areas but now live in primarily urban municipalities to feel least attached to

their current municipality, due to their nostalgia for the countryside (Smith 2002). This hypothesis can be formalised as:

Independent of the effects described in Hypotheses 1–3, the type of landscape a respondent grew up in (urban vs rural) will impact upon their place attachment to their municipality, with this effect varying by municipality—and with this between-municipality variability in the effect explained by the type of municipality that they currently live in (**H6**).

**H<sub>6</sub>** Specifically, respondents who grew up in rural areas but now live in a predominantly urban municipality will be less attached to that municipality than those still living in a predominantly rural municipality. Conversely, those who grew up in urban areas but now live in a predominantly rural municipality will be more attached to their current municipality than those still living in a predominantly urban municipality.

## **Methods**

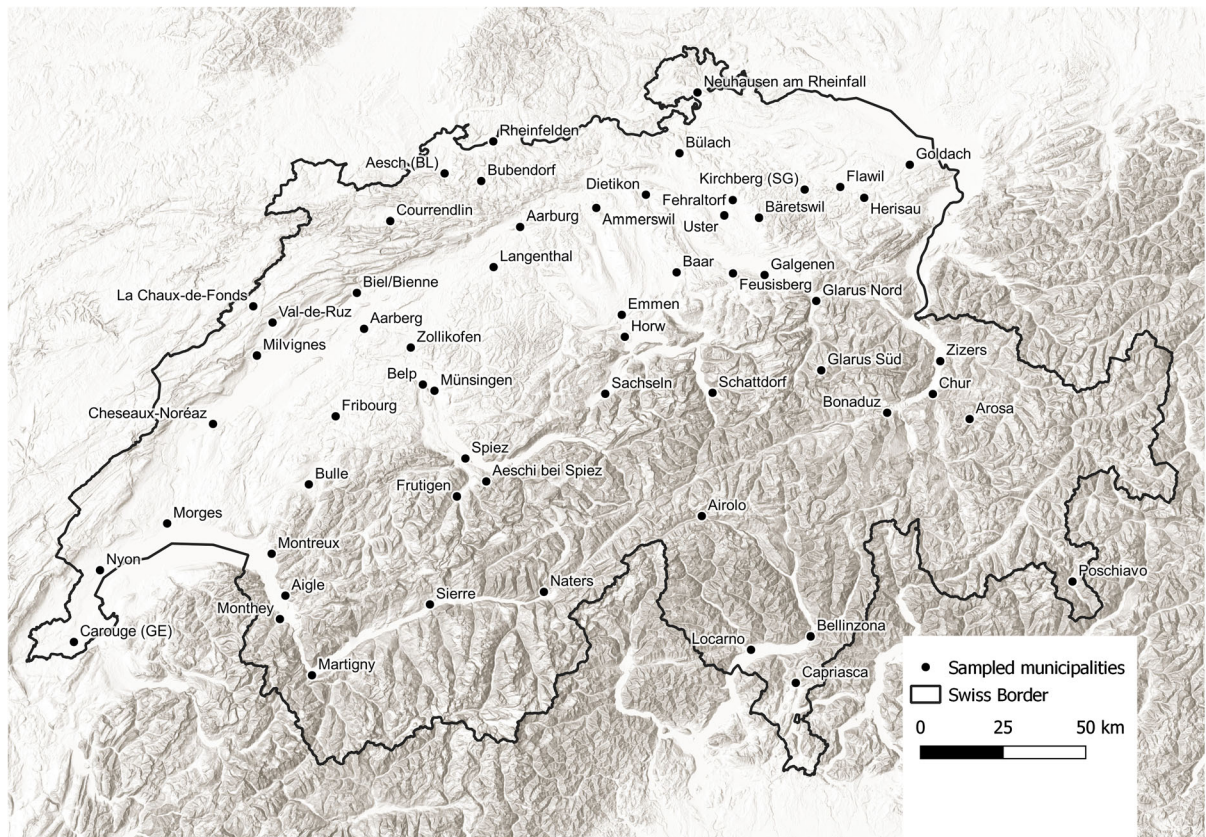
### *Sampling description*

This study was part of a research project on the further development of the Swiss landscape monitoring programme, for which a survey was conducted in 58 municipalities across Switzerland. A stratified sample of municipalities (Fig. 1) was taken, to ensure representativeness with respect to the three language areas in Switzerland (German, French and Italian) and, within the language areas, the municipality landscape types (e.g., high density peri-urban, peripheral rural) from the Swiss municipality typology (Federal Statistical Office 2012).

### *Data collection and measurement validation*

#### *Person-level data collection*

Person-level data was collected in May and June 2019 via an online survey: in 30 municipalities, this was supplemented by collecting further respondents via a paper survey mailed to randomly selected addresses. Statistical comparisons between paper and online surveys showed no significant differences for our outcome measures and primary predictors (Wartmann et al. 2021b), and we therefore pooled data from both



**Fig. 1** Distribution of sampled municipalities across Switzerland

collection methods, giving us a final sample of 858 cases nested within 58 municipalities. Data collection was conducted by an external survey provider (DemoSCOPE AG, Adligenswil, Switzerland), a member of ‘VSMS Swiss Interview Institute’, who guaranteed compliance with Swiss and international quality standards and ethical norms. Survey items are given in Table 1, for full survey in original languages German, French and Italian see Wartmann et al. (2021b).

#### *Person-level outcome measures*

Place attachment to municipality (*Municipality Place Attachment*, Table 1) was measured by six items taken from Kienast et al.’s (2015) nine-item place attachment scale of the Swiss landscape monitoring programme, which itself is based on neighbourhood attachment studies of Bonaiuto et al. (2003) and Bonaiuto et al. (1999). Each item had a 5-point response scale labelled from 1 ‘Not at all’ to 5

‘Absolutely’. Resident satisfaction with municipality landscape was measured by three items developed for this study (*Municipality Landscape Satisfaction*, Table 1). Responses were collected on an 11-point scale, scored from 0 ‘Very Bad’ to 10 ‘Excellent’ for the items on assessment of general state of the landscape and suitability for recreation, and from 0 ‘Not at all content’ to 10 ‘Very content’ for items concerning satisfaction with state of the landscape.

#### *Person-level primary predictors and mediators*

Respondents’ perceptions of meanings and feelings they associated with the landscapes where they lived, i.e. their non-visual cultural landscape values (*Associations with Landscape*, Table 1) were assessed using 24 dichotomous items, coded 1 ‘Yes’, 0 ‘No’. Each item asked ‘Do you associate this municipality’s landscape with...’ followed by a specific term denoting a feeling, emotion, or an activity shown to be

**Table 1** Survey items translated into English

Survey item	Excluded from scale based upon EFA results
<b>Controls</b>	
Gender	
Age (years) in 2019	
Grew up in large city?	
Grew up in periurban area?	
Grew up in mid-sized or small city or town?	
Grew up in a village?	
Grew up in rural area (outside village)?	
Openness of views from place where you live?	
Any public parks and green spaces accessible within 10 min on foot from where you live	
Any forest accessible within 10 min on foot from where you live	
Any meadows and agricultural areas accessible on foot within 10 min from where you live	
Any lakes, ponds, rivers or stream accessible on foot within 10 min from where you live	
Any mountains or hills accessible within 10 min on foot from where you live	
Any hiking or strolling paths accessible within 10 min on foot from where you live	
Any viewing spots accessible within 10 min on foot from where you live	
<b>Municipality perceived visual landscape quality</b>	
(Items relating to the dimension of landscape beauty)	
The landscape in my municipality is very beautiful	
I like the landscape in my municipality very much	
(Items relating to the dimension of complexity)	
The landscape in my municipality is varied	
In the landscape of my municipality there are many different landscape elements	
(Items relating to the dimension distinctiveness)	
The landscape in my municipality is unique	
The landscape in my municipality makes the municipality into something distinctive/special	
(Items relating to the dimension of fascination)	
The landscape in my municipality has fascinating properties	
In this landscape in my municipality there is a lot that attracts my attention	
In the landscape in my municipality there are many places where I would like to stay longer	
(Items relating to the dimension of authenticity)	
The landscape in my municipality seems authentic	
The landscape in my municipality seems genuine	
The landscape elements in my municipality seem to belong here	
<b>Municipality place attachment</b>	
I feel I belong here in my municipality	
I have strong positive feelings for my municipality	
This municipality feels as if it was made for me/is ideally suited to me	
I could just as well spend my time somewhere else than my municipality	
A large part of my life is organised around my municipality	
If I moved away from my municipality, I would miss it	
<b>Municipality landscape satisfaction</b>	
Assessment of general state of landscape in municipality	
Satisfaction with state of landscape in municipality	



**Table 1** continued

Survey item	Excluded from scale based upon EFA results
How well suited for recreation and relaxation is landscape in municipality	
<b>Associations with landscape</b>	
Do you associate with this municipality's landscape... peace and quiet?	X
Do you associate with this municipality's landscape...menace?	X
Do you associate with this municipality's landscape... being typical for Switzerland?	X
Do you associate with this municipality's landscape... nostalgia?	X
Do you associate with this municipality's landscape... nothing special	X
Do you associate with this municipality's landscape... recreation?	
Do you associate with this municipality's landscape... memories?	
Do you associate with this municipality's landscape... physical well-being?	
Do you associate with this municipality's landscape... mental well-being?	
Do you associate with this municipality's landscape... joy?	
Do you associate with this municipality's landscape... spirituality?	
Do you associate with this municipality's landscape... traditions?	
Do you associate with this municipality's landscape... beauty?	
Do you associate with this municipality's landscape... harmony?	
Do you associate with this municipality's landscape... social contacts?	
Do you associate with this municipality's landscape... feeling of home?	
Do you associate with this municipality's landscape...freedom?	
Do you associate with this municipality's landscape...connection to place/place attachment?	
Do you associate with this municipality's landscape... historical significance?	
Do you associate with this municipality's landscape... fresh air?	
Do you associate with this municipality's landscape... awe?	
Do you associate with this municipality's landscape... daily routine?	
Do you associate with this municipality's landscape... longing, yearning?	
Do you associate with this municipality's landscape... continuity?	

Original survey was in German, French and Italian

frequently associated with landscape in the study area (Wartmann and Purves 2018).

To measure respondents' perceived visual landscape quality (*Municipality Perceived Visual Landscape Quality*, Table 1), we used a series of 12 items designed to capture five related dimensions of perceived visual landscape quality: *complexity* as an indicator of direct landscape perception, as well as *distinctiveness*, *perceived beauty*, *fascination* and *authenticity* as indicators of the interpreted landscape. This selection of indicators is based on the needs for policy-making, with different indicators relating to different policies, and on the limitations in the length of a survey to be administered to the general public. These survey items have been used and tested in

previous surveys (Kienast et al. 2013, 2015; Wartmann et al. 2021a).

Specifically, perceived landscape beauty and complexity were each measured with two items (Bourassa 1988; Kienast et al. 2015; Kaplan and Kaplan 1989). The dimension of distinctiveness was likewise measured with two items, which were taken from a previously developed and empirically tested scale on distinctiveness (Gehring 2006). The dimension of fascination (Kaplan 1995) was assessed with three items based on scales developed to assess restorativeness of landscapes (Hartig et al. 1997; Laumann et al. 2001), which have been adapted and used as a fascination scale in previous studies (Gehring 2006; Kienast et al. 2015). Finally, authenticity was

measured with three items taken from the authenticity scale in the Swiss Landscape Monitoring programme (Kienast et al. 2015). All items utilised a five-point response scale from 1 ‘Not at all’ to 5 ‘Absolutely’.

#### *Person-level control variables*

We measured accessibility to green spaces and recreational infrastructure by asking respondents whether they lived within 10 min on foot from each of the following types of green spaces or features: public parks and green spaces; forest; meadows and agricultural areas; lakes, ponds, rivers or streams; mountains or hills; hiking or strolling paths; and viewing spots (*Controls*, Table 1). Each item was coded as either 1 ‘Yes’ or 0 ‘No’. This selection of seven features was based on a study examining what Swiss residents considered most important for local recreation (Kienast et al. 2012). We created a total score representing the number of different types of green spaces or features within 10 min walk by adding the item scores. We also collected respondent’s gender and age, along with the landscape they grew up in during childhood (1 ‘rural’ vs 0 ‘urban’, where urban represented large city, mid-sized or small city or town, or peri-urban landscape, and rural represented living in a small village or in the countryside outside of a village). Finally the survey asked about the degree to which a respondent’s current residence offered unobstructed views of the surroundings, since openness of view has been shown to be an important aspect of landscape preference (Appleton 1984). This item was coded from 1 ‘Very constricted views’ to 3 ‘Mostly free view of the surroundings’ as per previous landscape monitoring assessments (Kienast et al. 2013).

#### *Person-level measure validation*

Given that several of our planned scale measures—place attachment to municipality, satisfaction with municipality landscape, perceived visual landscape quality, and meanings, feelings or activities associated with landscape (i.e., non-visual cultural landscape values)—were either designed specifically for this study or adapted (rather than copied) from previously validated scales, we first built a measurement model for the items. We used exploratory factor analysis (EFA), with items removed if necessary, to achieve a

clear item-factor solution (i.e. measurement model) without cross-loading items or singleton factors. We then attempted to validate this measurement model by testing its fit using confirmatory factor analysis (CFA)—or, where the construct was modelled at both person and municipality levels, multilevel confirmatory factor analysis (MCFA). The EFA and CFA/MCFA analyses were performed on distinct randomly-split halves of the dataset, a least-worst practical solution to avoid the model overfitting caused by building and testing using the same cases (Fokkema and Greiff 2017). Mplus software version 8 (Muthén and Muthén 2016) was used for all EFA, CFA and MCFA analyses.

Exploratory factor analysis of the scale items suggested that a six factor person-level solution was optimal. This was comprised of: single factors for place attachment to municipality and satisfaction with municipality landscape; a single second order factor for perceived visual landscape quality (in turn measured by factors for each of the dimensions); and three first-order factors for respondents’ non-visual cultural values associated with their municipality landscape, respectively representing tradition [items “do you associate with this landscape...”: traditions, memories, social contacts, feeling of home (German: “Heimat”), connectedness, historical significance, daily routine, continuity]; and spirituality/mental well-being (items “do you associate with this landscape...”: mental well-being, joy, spirituality, beauty, harmony, freedom, awe, yearning); and physical well-being (items “do you associate with this landscape...”: physical well-being, recreation, fresh air). Five of the associations with landscape items were dropped due to cross-loading or low loadings (see Table 1).

For the measurement model validation, we used MCFA to test the measurement model for the proposed municipality attachment, landscape satisfaction and perceived visual landscape quality factors, which each operated as outcomes at both person and municipality levels of the data. We performed a separate CFA for the non-visual cultural landscape values items, which were only defined as concepts at the person-level.

A three-factor person-level, three-factor municipality-level measurement model for place attachment, landscape satisfaction and perceived visual landscape quality—with the perceived visual landscape quality

factor a second order construct measured by five first order factors for landscape beauty, complexity, distinctiveness, fascination and authenticity—offered a satisfactory fit to the data (Chi-sq = 1178.324 on 362 df, CFI = 0.906, RMSEA = 0.070), using the commonly employed fit indices and cut-off criteria (see Gerbing and Anderson 1988; Hu and Bentler 1999). It also outperformed potential competing models in which higher order and/or lower order visual landscape quality factor(s) was simply a first order three factor construct; and in which the municipality place attachment, municipality landscape satisfaction and perceived visual landscape quality items were combined into a single factor. Model fit statistics and comparisons are given in Table 2.

The CFA results likewise supported the three-factor measurement model for associations with landscape (i.e. non-visual cultural landscape values) suggested by our EFA. Furthermore, this three-factor model, with separate factors for personal association centred on tradition; on spirituality/mental well-being; and on physical well-being, outperformed potential competing 1-factor model and 2-factor models (physical well-being and mental well-being factors merged). Model comparisons and fit statistics are given in Table 3.

Internal consistency reliability coefficients for all multi-item scales are given in Table 4. Both multilevel omega and multilevel alpha exceeded 0.7 at both person and municipality levels for scales with Likert type multipoint response codings, indicating a

satisfactory level of reliability. For the dichotomous items measuring non-visual cultural landscape values, alpha and omega fell just slightly short of this benchmark for two of the dimensions, though with the physical well-being subscale comprised of only three items this was unsurprising.

#### *Municipality-level landscape metrics*

Variables intended to measure municipality-specific landscape ecology characteristics and features were extracted from existing landscape monitoring and national statistical data. These included predominant type of landscape in the municipality (coded 1 ‘Urban’; 2 ‘Peri-urban’; 3 ‘Rural’: dummy coded with rural as the reference category) from the Federal Statistical Office’s typology (2012). A metric for urban sprawl was calculated per municipality as a combination of settlement dispersion/density, and population/workplace density (Jaeger et al. 2010). The metric has been developed and widely applied in Europe (Siedentop and Fina 2012; Hennig et al. 2015). Input variables for the urban sprawl metric calculation were derived from Swiss TLM3D building footprint [swissTLM3D © 2014 swisstopo (DV033594)] and the federal statistics for population and workplaces (STATPOP and STATENT; Federal Office of Statistics 2012). Landscape fragmentation (effective mesh size) was averaged per municipality for roads > 4 m wide that are assumed to divide habitats (Jaeger et al.

**Table 2** Comparing competing multilevel measurement models for perceived landscape quality, personal attachment to municipality, and personal satisfaction with municipality landscape

Measurement model	Chi-sq, df	$\Delta$ Chi-sq, $\Delta$ df	$p$	CFI	RMSEA	SRMR within	SRMR between
1 Factor within; 1 factor between	2943.567, 378	–	–	0.704	0.121	0.090	0.665
3 Factors within; 1 factor between	1790.127, 375	1153.44, 3*	< 0.001	0.837	0.090	0.059	0.607
3 Factors within; 3 factors between	1602.078, 372	188.049, 3*	< 0.001	0.858	0.084	0.058	0.577
3 Factors within (perceived visual landscape quality as second order factor measured by 5 first order factors); 3 factors between (perceived visual landscape quality as second order factor measured by 5 first order factors)	1178.324, 362	423.754, 10*	< 0.001	0.906	0.070	0.054	0.329

N = 456 (random half of data not used for EFA)

\* $p < 0.05$

**Table 3** Comparing competing measurement models for non-visual cultural landscape values

Measurement model	Chi-sq, df	$\Delta$ Chi-sq, $\Delta$ df	$p$	CFI	RMSEA	SRMR
1 Factor	641.230, 152	–	–	0.801	0.084	0.129
2 Factors (mental well-being, physical well-being items load on to single factor)	441.313, 151	199.917, 1*	< 0.001	0.882	0.065	0.111
3 Factors (separate factors for mental well-being, physical well-being, tradition)	392.589, 149	48.724, 2*	< 0.001	0.901	0.060	0.105

N = 456 (random half of data not used for EFA)

\* $p < 0.05$

**Table 4** Multilevel reliability coefficients for the different proposed scales

Multilevel reliability coefficients	Municipality Perceived Visual Landscape Quality	Municipality Place Attachment	Municipality Landscape Satisfaction	Extent municipality landscape associated with 'tradition'	Extent municipality landscape associated with 'spirituality/mental well-being'	Extent municipality landscape associated with 'physical well-being'
Omega within	0.948	0.854	0.911	0.610	0.753	0.670
Omega between	0.880	0.887	0.968	–	–	–
Alpha within	0.944	0.849	0.909	0.636	0.761	0.600
Alpha between	0.953	0.840	0.950	–	–	–

2008). Input data were derived from TLM3D streets [swissTLM3D © 2014 swisstopo (DV033594)]. Diversity of landscape composition was measured through the Shannon diversity index (Ortiz-Burgos 2016) calculated in a 1 km<sup>2</sup> moving window with eight aggregated land use classes: industry, supply and disposal (1); settlement (2); transport infrastructure (3); grassland and arable land (4); alpine pastures (5); forest (6); waters (7); boulders, rock (8), according to 'Arealstatistik 2004/2009' (Federal Statistical Office 2011), with data provided by GEOSTAT, the geoinformation centre within the Federal Statistical Office. To measure natural land cover, we selected the AREA classes from 'Arealstatistik' (Federal Statistical Office 2011) encompassing unproductive land use, mainly high elevation land cover types (scrubs, rocks, cliffs, screes, sand, glaciers; AREA classes 65, 69, 70 and 72). To measure agricultural area we selected arable land, orchards, pastures, etc. (i.e. land cover classes 37–44), but no high-elevation grazing areas from 'Arealstatistik 2004/2009' (Federal Statistical Office 2011).

#### Statistical analysis

Having established scale validity at the person-level, we first computed scale mean (i.e. composite) scores for our measures of associations with landscape, perceived landscape quality, municipality place attachment and municipality landscape satisfaction. Ideally, we would have treated these measures as latent variables when modelling relationships between them, but our relatively small municipality-level sample size prohibited that approach. Then, by sequentially adding predictive paths between these scale mean scores themselves, and further observed variables, at both the person-level and municipality level, we fitted the multilevel structural equation model (MSEM) illustrated in Fig. 2.

Specifically, starting with a model in which outcome variance was simply partitioned into person and municipality components (model 1), our control variables (model 2) and the subscales associations of mental well-being, physical well-being and tradition with the municipality (model 3) were added as person-level predictors of perceived visual landscape quality.

Our hypothesised mediator, perceived visual landscape quality, in turn predicted our outcomes, municipality place attachment and municipality landscape satisfaction (model 4, testing Hypotheses 1–3).

At the municipality level, predominant landscape type (urban vs. peri-urban vs. rural) was added as a predictor of each outcome (coded into dummy variables representing urban and peri-urban, with rural as the reference category), with its effect operating directly and via proposed mediators representing the different landscape ecological metrics per municipality (models 6–8, Hypotheses 4–5). Finally, we allowed the person-level effect between landscape type respondents grew up in (rural vs. urban) and municipality place attachment to be a random effect, that is, for the regression coefficient to vary between municipality (model 9). Predominant landscape type was then added as a predictor of this municipality level random slope variability (model 10, Hypothesis 6, illustrated in Fig. 2).

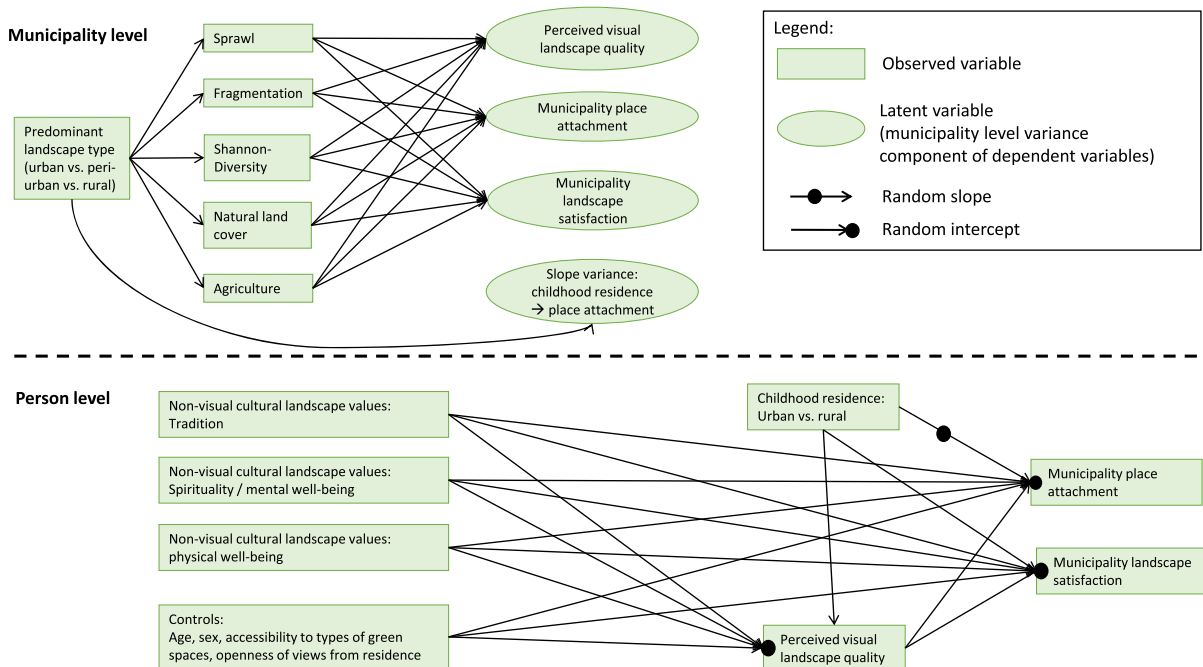
Competing models were tested using the change in the model deviance, which has a chi-square distribution, and also assessed via the change in the person-level or subject level outcome variance explained, as appropriate. Models were estimated by Maximum

Likelihood Estimation, again using Mplus version 8 software. All person-level predictors were municipality-mean-centered. Indirect effects were tested using confidence intervals derived via Monte Carlo simulation (Preacher and Selig 2010; Hayes 2017). Since municipalities were not directly adjacent, models did not include within-municipality spatial autocorrelation parameters.

### Results

Means, standard deviations, and bivariate correlations between the study variables are given in Tables 5 and 6.

Competing models are described in Table 7, with coefficients from the final model (as per Fig. 2) and estimates of indirect effects at each level given in Tables 8, 9 and 10 respectively, with the statistically significant paths illustrated in Fig. 4. Having fitted the unconditional model, and then added person-level effects of control variables and the direct effects of non-visual cultural landscape values (models 1–3), adding paths from a respondent’s perceived visual landscape quality to both their place attachment and



**Fig. 2** Multilevel structural equation model for perceived landscape quality, place attachment and landscape satisfaction (model 10). Personal level variables are municipality-mean-centered

their satisfaction with their municipality landscape significantly improved model fit (Table 7 model 4;  $\Delta$  Deviance vs. model 3 = 419.234 on 2 df,  $p < 0.001$ , variance explained in place attachment to municipality = 23.7%, variance explained in satisfaction with their municipality landscape = 18.5%). Effects of perceived visual landscape quality on both outcomes were statistically significant and positive, thus supporting Hypotheses 1a and 1b.

Adding paths from each dimension of non-visual cultural landscape values (the physical well-being, mental well-being and tradition associations with landscape) to perceived visual landscape quality also

significantly improved model fit (Table 7 model 5;  $\Delta$  Deviance vs. model 4 = 155.368 on 3 df,  $p < 0.001$ , variance explained in perceived visual landscape quality = 15.4%), supporting Hypothesis 2. Each of the three types of non-visual cultural landscape values had a significant positive effect on perceived landscape quality. When assessing the indirect paths from non-visual cultural landscape values to each outcome via perceived visual landscape quality, the paths from tradition, from mental well-being, and from physical well-being each had a significant positive indirect effect upon municipality place attachment and

**Table 5** Means, standard deviations, and bivariate correlations between the within-municipality (i.e. participant-level) study variables

Variables <sup>a</sup>	Mean <sup>a</sup>	Std Dev	1	2	3	4	5	6	7	8	9	10
1 Age (years)	0.00	14.66										
2 Gender (1 = Male, 0 = Female)	0.00	0.48	0.24									
3 Childhood area of residence (1 = Grew up in rural area, 0 = large city, mid-sized or small city or town, peri-urban)	0.00	0.46	- 0.01	0.00								
4 Openness of views from residence	0.00	0.63	- 0.06	- 0.06	0.09							
5 Number of green space types accessible on foot within 10 min of residence	0.00	1.24	- 0.05	0.05	- 0.03	- 0.15						
6 Non-visual cultural landscape values: spirituality/mental well-being	0.00	0.24	0.03	- 0.06	- 0.03	- 0.09	0.24					
7 Non-visual cultural landscape values: tradition	0.00	0.23	0.01	- 0.02	0.02	0.00	0.09	0.34				
8 Non-visual cultural landscape values: physical well-being	0.00	0.32	0.09	0.01	- 0.09	- 0.11	0.29	0.56	0.12			
9 Perceived visual landscape quality	0.00	0.69	0.04	0.02	- 0.02	- 0.20	0.39	0.44	0.27	0.39		
10 Municipality place attachment	0.00	0.84	0.08	- 0.01	- 0.06	- 0.15	0.28	0.35	0.33	0.34	0.69	
11 Municipality landscape satisfaction	0.00	1.49	0.04	0.02	- 0.12	- 0.20	0.35	0.36	0.13	0.37	0.63	0.47

N = 766 participants

<sup>a</sup>All participant-level variables were municipality-mean-centered, hence the sample mean scores = 0

**Table 6** Means, standard deviations, and bivariate correlations for municipality-level variables

Variables	Mean	Std Dev	1	2	3	4	5	6	7	8	9
1 Predominant municipality landscape type dummy variable (urban vs. rural)	0.64	0.48									
2 Predominant municipality landscape type dummy variable (peri-urban vs. rural)	0.22	0.42	− 0.71								
3 Municipality landscape: extent of natural land cover	0.03	0.03	− 0.29	− 0.21							
4 Municipality landscape: extent of agricultural land cover	0.29	0.16	− 0.04	0.31	− 0.62						
5 Municipality landscape: extent of diversity	0.99	0.19	0.45	− 0.22	− 0.56	0.20					
6 Municipality landscape: extent of sprawl	15.31	12.47	0.56	− 0.30	− 0.54	− 0.01	0.82				
7 Municipality landscape: extent of fragmentation	100.95	170.18	0.05	− 0.15	0.35	− 0.28	− 0.39	− 0.26			
8 Perceived visual landscape quality	3.79	0.30	− 0.27	− 0.11	0.46	− 0.36	− 0.14	− 0.26	− 0.08		
9 Municipality place attachment	3.53	0.21	− 0.05	− 0.14	0.16	− 0.19	0.02	0.05	− 0.11	0.67	
10 Satisfaction with municipality landscape	7.74	0.50	− 0.56	0.34	0.22	0.05	− 0.28	− 0.50	− 0.27	0.75	0.61

N = 58 municipalities

landscape satisfaction (see Table 5, indirect effects). This offers support for Hypotheses 3a and 3b.

At the municipality level of the model, adding paths from the five landscape ecological metrics to between-municipality variation in perceived visual landscape quality, municipality place attachment and landscape satisfaction significantly improved model fit (Table 7 model 7;  $\Delta$  Deviance vs. model 6 = 28.046 on 15 df,  $p = 0.021$ , between municipality variance explained in perceived visual landscape quality = 20.9%; in municipality place attachment = 2.2%, in satisfaction with municipality landscape = 18.6%). There were statistically significant negative effects of both urban

sprawl and fragmentation on landscape satisfaction, supporting Hypothesis 4c, though not on place attachment or perceived visual landscape quality (hence not supporting Hypotheses 4a and 4b). The only statistically significant municipality level indirect effect between municipality landscape type and landscape satisfaction operated via sprawl (relative indirect effect of urban vs. rural on landscape satisfaction, via sprawl =  $-0.476$ , 95% Monte Carlo simulated CI =  $-0.941, -0.011$ ), offering partial support for Hypotheses 5c only.

Finally, we allowed the person-level effect of landscape type where respondents grew up on

**Table 7** Comparison for multilevel models assessing effects of landscape associations and municipality landscape type upon perceived landscape quality, personal attachment to municipality, and satisfaction with municipality landscape

Model	Deviance $\Delta$	Deviance, $\Delta$ df vs. preceding model	Person-level residual variance in DV			Municipality-level intercept variance			Municipality-level slope variance
			Perceived visual landscape quality	Municipality place attachment	Municipality landscape satisfaction	Perceived visual landscape quality	Municipality place attachment	Municipality landscape satisfaction	
1: Unconditional model	7129.974		0.486	0.708	2.241	0.074	0.050	0.229	Variance in relationship between type of landscape respondent grew up in (urban vs. rural) and place attachment
2: Add person-level control variables	6828.244	301.730, 15, $p < 0.001$	0.395	0.633	1.876	0.085	0.055	0.256	
3: Add person-level path from associations with landscape to each outcome (direct effects)	6637.612	190.632, 6, $p < 0.001$	0.395	0.521	1.664	0.086	0.058	0.265	
4: Add person-level paths path from non-visual cultural landscape values to each outcome	6218.378	419.234, 2, $p < 0.001$	0.395	0.353	1.249	0.076	0.039	0.220	
5: Add person-level path from non-visual cultural landscape values to perceived visual landscape quality	6063.010	155.368, 3, $p < 0.001$	0.320	0.353	1.249	0.091	0.045	0.236	
6: Add municipality level paths from predominant landscape type (urban vs. periurban vs. rural) to each outcome (direct effects)	6036.146	26.864, 6, $p < 0.001$	0.320	0.353	1.249	0.073	0.040	0.167	
7: Add municipality level paths from landscape ecology metrics to each outcome	6008.100	28.046, 15, $p = 0.021$	0.320	0.353	1.249	0.054	0.040	0.123	
8: Add municipality level paths from predominant landscape type (urban vs. peri-urban vs. rural) to landscape ecology metrics	5926.820	81.280, 10, $p < 0.001$	0.320	0.353	1.249	0.054	0.040	0.123	



**Table 7** continued

Model	Deviance $\Delta$	Deviance, $\Delta$ df vs. preceding model	Person-level residual variance in DV		Municipality-level intercept variance		Municipality-level slope variance		
			Perceived visual landscape quality	Municipality place attachment	Perceived visual landscape quality	Municipality place attachment			
9: Allow person-level relationship between landscape type a respondent grew up in (urban vs. rural) to place attachment outcome to vary between municipalities	5926.130	0.690, 2, p = 0.708	0.320	0.353	1.249	0.054	0.040	0.123	0.016
10: Explain municipality variation in relationship between landscape type a respondent grew up in (urban vs. rural) and place attachment outcome by predominant municipality landscape type (urban vs. peri-urban vs. rural; dummy coded)	5919.394	6.736, 2, p = 0.034	0.320	0.353	1.249	0.054	0.040	0.123	0.009

N = 766 observations from 58 municipalities

**Table 8** Final model (10): unstandardised direct and indirect effects at person-level, with 95% confidence intervals

IVs and mediators	Via	Mediators and outcomes								
		Perceived visual landscape quality			Municipality place attachment			Municipality landscape satisfaction		
		Estimate, 95% CI	p		Estimate, 95% CI	p		Estimate, 95% CI	p	
Sex (1 = Male, 0 = Female)		0.009 (− 0.077, 0.095)	0.844	− 0.054 (− 0.144, 0.036)	0.241	− 0.010 (− 0.182, 0.162)	0.906			
Age (years)		0.001 (− 0.001, 0.003)	0.442	0.003* (0.001, 0.007)	0.036	0.002 (− 0.004, 0.008)	0.605			
Number of types of green spaces accessible within 10 min on foot from residence		0.145* (0.110, 0.180)	< 0.001	0.008 (− 0.029, 0.045)	0.685	0.116* (0.043, 0.189)	0.002			
Openness of views from residence		0.139* (0.074, 0.204)	< 0.001	0.015 (− 0.054, 0.084)	0.667	0.129 (− 0.002, 0.260)	0.055			
Landscape type during childhood (1 = grew up in rural area, 0 = large city, mid-sized or small city or town, peri-urban)		0.023 (− 0.065, 0.111)	0.610	<sup>b</sup>	<sup>b</sup>	− 0.301* (− 0.475, − 0.127)	0.001			
Non-visual cultural landscape values: tradition		0.447* (0.257, 0.637)	< 0.001	0.631* (0.431, 0.831)	< 0.001	− 0.340 (− 0.722, 0.042)	0.080			
Non-visual cultural landscape values: spirituality/mental well-being		0.661* (0.447, 0.875)	< 0.001	− 0.110 (− 0.339, 0.119)	0.347	0.350 (− 0.085, 0.785)	0.115			
Non-visual cultural landscape values: physical well-being		0.338* (0.181, 0.495)	< 0.001	0.229* (0.062, 0.396)	0.007	0.405* (0.089, 0.721)	0.012			
Perceived visual landscape quality				0.744* (0.668, 0.820)	< 0.001	1.152* (1.005, 1.299)	< 0.001			
Indirect Effects				Estimate, 95% CI <sup>a</sup>		Estimate, 95% CI <sup>a</sup>				
Non-visual cultural landscape values: tradition	Perceived visual landscape quality			0.333* (0.188, 0.478)		0.515* (0.288, 0.742)				
Non-visual cultural landscape values: spirituality/mental well-being	Perceived visual landscape quality			0.492* (0.325, 0.659)		0.761* (0.496, 1.026)				
Non-visual cultural landscape values: physical well-being	Perceived visual landscape quality			0.251* (0.131, 0.371)		0.389* (0.201, 0.577)				

N = 766 observations from 58 municipalities

\*p < 0.05

<sup>a</sup>For indirect effects, 95% CI calculated by Monte Carlo simulation, and test of the effect is via the 95% CI

<sup>b</sup>In final model this effect is conditional on current municipality—see Fig. 2

**Table 9** Final model (10): unstandardised direct effects at municipality level, with 95% confidence intervals

Mediators and outcomes											
IVs and mediators		Municipality: Urban sprawl combination of settlement dispersion, settlement density, and population/work place density		Municipality: Diversity Shannon diversity index in a 1 km <sup>2</sup> moving window with 8 aggregated land use classes		Municipality: Fragmentation effective mesh size for fragmentation by roads		Municipality: Natural land cover unproductive land use		Municipality: Agriculture extent of agricultural land use	
Direct effects:		Estimate, 95% CI	p	Estimate, 95% CI	p	Estimate, 95% CI	p	Estimate, 95% CI	p	Estimate, 95% CI	p
Predominant municipality landscape type dummy var (urban vs. rural)		18.151* (10.344, 25.958)	< 0.001	0.236* (0.107, 0.365)	< 0.001	-35.473 (-163.835, 92.889)	0.588	-0.070* (-0.092, -0.048)	< 0.001	0.125* (0.009, 0.241)	0.033
Predominant municipality landscape type dummy var (peri-urban vs. rural)		6.057 (-2.939, 15.053)	0.187	0.091 (-0.058, 0.240)	0.235	-88.194 (-236.129, 59.741)	0.243	-0.076* (-0.101, -0.051)	< 0.001	0.227* (0.094, 0.360)	0.001
Municipality landscape: extent of sprawl											
Municipality landscape: extent of diversity											
Municipality landscape: extent of fragmentation											
Municipality landscape: extent of natural land cover											
Municipality landscape: extent of agriculture											
Mediators and outcomes											
IVs and mediators		Perceived visual landscape quality		Place attachment		Satisfaction with municipality landscape		Slope (relationship) between landscape respondent grew up in (rural vs. urban) and attachment to municipality		Slope (relationship) between landscape respondent grew up in (rural vs. urban) and attachment to municipality	
Direct effects:		Estimate, 95% CI	p	Estimate, 95% CI	p	Estimate, 95% CI	p	Estimate, 95% CI	p	Estimate, 95% CI	p
Predominant municipality landscape type dummy var (urban vs. rural)		-0.280 (-0.601, 0.041)	0.086	-0.138 (-0.467, 0.191)	0.413	-0.404 (-0.990, 0.182)	0.177	-0.525* (-0.927, -0.123)	0.011		
Predominant municipality landscape type dummy var (peri-urban vs. rural)		-0.277 (-0.618, 0.064)	0.112	-0.155 (-0.504, 0.194)	0.382	-0.114 (-0.735, 0.507)	0.719	-0.423 (-0.852, 0.006)	0.053		

Table 9 continued

IVs and mediators	Mediators and outcomes					
	Perceived visual landscape quality	Place attachment	Satisfaction with municipality landscape	Slope (relationship between landscape respondent grew up in (rural vs. urban) and attachment to municipality	Estimate, 95% CI	p
Direct effects:	Estimate, 95% CI	p	Estimate, 95% CI	p	Estimate, 95% CI	p
Municipality landscape: extent of sprawl	- 0.011 (- 0.025, 0.003)	0.103	0.002 (- 0.012, 0.016)	0.751	- 0.026* (- 0.050, - 0.002)	0.025
Municipality landscape: extent of diversity	0.574 (- 0.163, 1.311)	0.127	- 0.017 (- 0.762, 0.728)	0.965	0.665 (- 0.646, 1.976)	0.320
Municipality landscape: extent of fragmentation	0.000 (0.000, 0.000)	0.171	0.000 (0.000, 0.000)	0.486	- 0.001* (- 0.001, - 0.001)	0.044
Municipality landscape: extent of natural land cover	0.652 (- 3.566, 4.870)	0.762	0.233 (- 4.022, 4.488)	0.914	- 1.307 (- 8.884, 6.270)	0.735
Municipality landscape: extent of agriculture	- 0.620 (- 1.322, 0.082)	0.083	- 0.157 (- 0.863, 0.549)	0.662	- 0.461 (- 1.715, 0.793)	0.472

N = 766 observations from 58 municipalities

\*p &lt; 0.05

**Table 10** Final model (10): unstandardised indirect effects at municipality level, with 95% confidence intervals<sup>b</sup>

Independent variables and mediators	Via	Mediators and outcomes		
		Perceived visual landscape quality	Municipality place attachment	Municipality landscape satisfaction
Indirect effects		Estimate, 95% CI <sup>b</sup>	Estimate, 95% CI <sup>b</sup>	Estimate, 95% CI <sup>b</sup>
Municipality landscape type dummy (urban vs. rural)	Municipality landscape: extent of sprawl	− 0.193 (− 0.440, 0.054)	0.038 (− 0.197, 0.273)	− 0.476 <sup>a</sup> (− 0.941, − 0.011)
Municipality landscape type dummy (periurban vs. rural)	Municipality landscape: extent of sprawl	− 0.065 (− 0.188, 0.058)	0.013 (− 0.067, 0.093)	− 0.159 (− 0.433, 0.115)
Municipality landscape type dummy (urban vs. rural)	Municipality landscape: extent of diversity	0.136 (− 0.054, 0.326)	− 0.004 (− 0.180, 0.172)	0.157 (− 0.164, 0.478)
Municipality landscape type dummy (periurban vs. rural)	Municipality landscape: extent of diversity	0.052 (− 0.058, 0.162)	− 0.002 (− 0.071, 0.067)	0.060 (− 0.095, 0.215)
Municipality landscape type dummy (urban vs. rural)	Municipality landscape: extent of fragmentation	0.013 (− 0.038, 0.064)	0.007 (− 0.024, 0.038)	0.035 (− 0.094, 0.164)
Municipality landscape type dummy (periurban vs. rural)	Municipality landscape: extent of fragmentation	0.032 (− 0.039, 0.103)	0.017 (− 0.038, 0.072)	0.086 (− 0.081, 0.253)
Municipality landscape type dummy (urban vs. rural)	Municipality landscape: extent of natural land cover	− 0.046 (− 0.342, 0.250)	− 0.016 (− 0.314, 0.282)	0.091 (− 0.440, 0.622)
Municipality landscape type dummy (periurban vs. rural)	Municipality landscape: extent of natural land cover	− 0.050 (− 0.371, 0.271)	− 0.018 (− 0.343, 0.307)	0.100 (− 0.478, 0.678)
Municipality landscape type dummy (urban vs. rural)	Municipality landscape: extent of agriculture	− 0.078 (− 0.192, 0.036)	− 0.020 (− 0.110, 0.070)	− 0.058 (− 0.225, 0.109)
Municipality landscape type dummy (periurban vs. rural)	Municipality landscape: extent of agriculture	− 0.141 (− 0.319, 0.037)	− 0.036 (− 0.197, 0.125)	− 0.104 (− 0.396, 0.188)

N = 766 observations from 58 municipalities

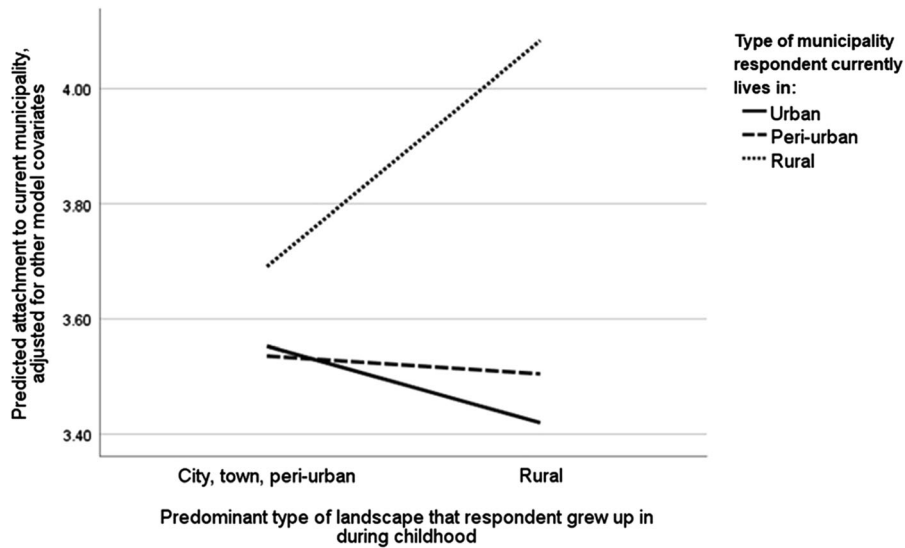
<sup>a</sup>95% Confidence Interval doesn't contain 0

<sup>b</sup>95% Confidence Interval calculated by Monte Carlo simulation

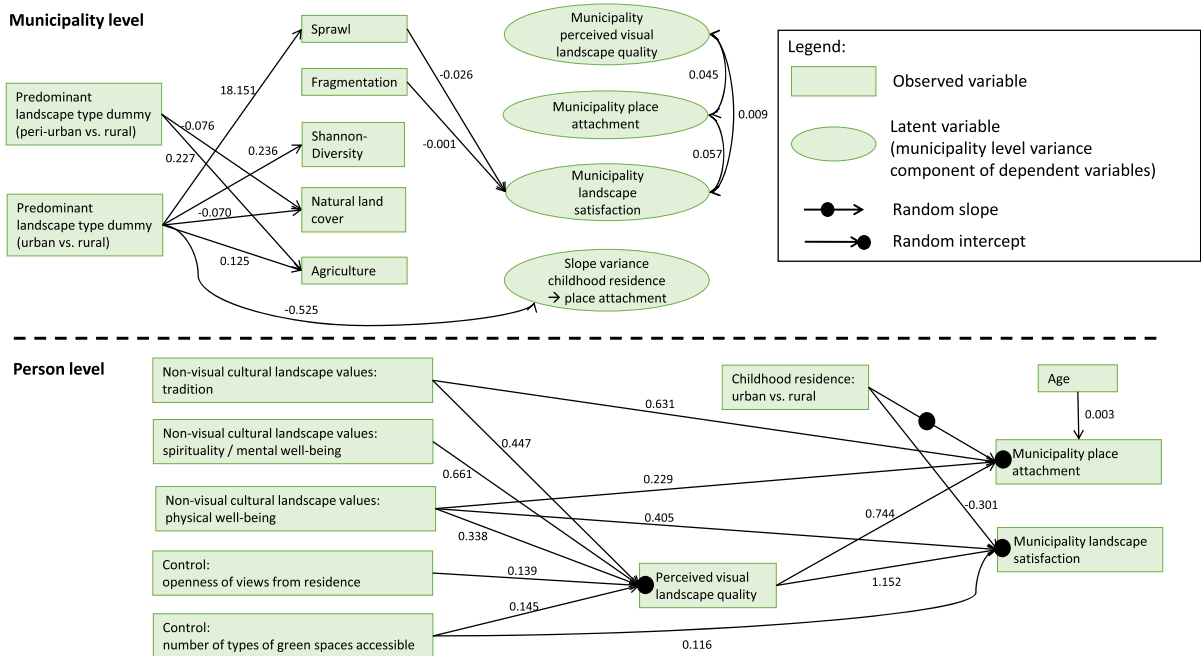
municipality place attachment to vary by municipality (model 9). This variation was in part explained by current municipality type (Table 7 model 10;  $\Delta$  Deviance vs. model 9 = 6.736 on 2 df,  $p = 0.034$ , variance explained in childhood landscape type on place attachment slope effect = 43.8%), such that subjects who grew up in rural landscapes but currently living in urban landscapes reporting the lowest level of place attachment to current municipality (Fig. 3). This offers support for Hypothesis 6. The coefficients from the final model are illustrated in Fig. 4.

## Discussion

Understanding the relationships between ecological aspects of landscape and how residents relate to landscape is important for policy-making and planning—but the development and application of social science landscape assessments lags behind ecological indicators (Cassatella and Peano 2011). Furthermore, although integration of social and ecological aspects of landscapes are crucial, we identified a research gap regarding the capture of both the public's perceptions of a landscape, and the testing of relationships between these perceptions, interpretations and a



**Fig. 3** Predicted personal attachment to current municipality by childhood municipality landscape type and current municipality landscape type



**Fig. 4** Unstandardized regression coefficients for statistically significant relationships within final model (10)

landscape’s ecological features. When theorising and testing models for such relationships, it is essential to distinguish between the person-level (i.e. explaining variation between individuals within the same landscape unit) and the landscape-level (explaining variation between landscapes). Testing these relationships

together requires advanced quantitative modelling approaches suited to such multilevel data, of which there are few examples within landscape research literature (e.g. Hegetschweiler et al. 2017). We have attempted to address this gap, by combining ecological data and social science assessments of landscape

through an empirical study across 58 Swiss municipalities. The novelty of our approach lies in both the integration of these data sources, and the use of multilevel modelling to simultaneously test hypotheses at person and municipality levels.

#### Variation between respondents within landscapes

We found considerable variation between respondents living within the same municipality. In testing our hypotheses, perceived visual landscape quality positively predicted place attachment and satisfaction with the municipality landscape, supporting Stedman's 'Meaning-Mediated Model' of place attachment (2003, p. 674). Stedman's model suggests that physical landscape features do not directly produce place attachment, but influence the symbolic meanings of the landscape, which are in turn associated with attachment. In our model, the physical landscape setting creates what people then interpret as visual landscape quality, which in turn positively affects their place attachment.

Non-visual cultural landscape values, in the form of tradition, mental well-being and physical well-being each had a significant positive effect on perceived visual landscape quality. Furthermore, operating indirectly via perceived visual landscape quality, they each positively predicted place attachment. These results indicate that both visual and non-visual aspects have an influence on quality, satisfaction and place attachment, which underlines the importance of including social aspects in landscape assessments that go beyond visual ratings (Dakin 2003).

We also found that respondents who grew up in rural landscapes but now live in urban or peri-urban landscapes exhibit lower place attachment than those who grew up and still live in rural landscapes, or respondents who grew up and still live in urban/peri-urban settings. This suggests familiarity with a landscape type through childhood experience acts on current place attachment—but that this effect is influenced by both the landscape type they grew up in and reside in now. This finding merits further exploration to test assumptions such as that rural landscapes are infused with more nostalgic associations than urban landscapes, and that moving from a rural to an urban setting may be associated with a sense of loss (Smith 2002).

#### Landscape level: variation between municipalities

At the landscape level, we found urban sprawl and fragmentation to be significantly negatively related to reported satisfaction with landscape. From a policy-perspective, this supports a continued focus on limiting sprawl, which is negatively influencing satisfaction. The extent of natural land cover was positively related to landscape quality and satisfaction, whereas extent of agricultural land cover was a negative predictor, although these effects were not statistically significant. However, this lack of significance has to be interpreted given the strength of the relationships indicated by the proportion of variance explained and the lack of statistical power at the landscape level, of which the latter is a major limitation of this study. Furthermore, treating all agricultural land homogeneously does not take into account the variation in agricultural lands from monotonous to highly structured agricultural landscapes.

#### Limitations and further work

One of the major limitations of this study is the use of municipality as the landscape-level unit. Given that municipalities may well be comprised of different types of landscapes, the concept of predominant municipality landscape type is unlikely to reflect the landscape experienced across the entire area, in turn attenuating estimated relationships between predominant municipality landscape and ecological features. However, municipality is a spatial unit which is widely recognised among the Swiss public and allows linking public opinion to established landscape ecology metrics.

Although previous studies linking social aspects of landscape perception with landscape ecological data utilised smaller numbers of landscape units (Hegetschweiler et al. 2017), municipality-level sample size is still a major limitation in our study when testing the impacts of ecological metrics. Given common limitations on respondents sampled due to available resources, we consider sampling fewer respondents from each, but of more landscape units to increase statistical power for testing landscape-level hypotheses.

Although we detected relationships between landscape metrics and perceived landscape qualities, it is also necessary to investigate the effect of scale on

landscape metrics applied. For instance, we used 1 km<sup>2</sup> resolution to calculate Shannon's diversity index, because we assume this resolution relates to the meso-scale at which landscape is perceived, but this may not be appropriate across all landscapes. Although we found some relation to landscape perception, we argue that the effect of scales at which metrics are calculated on the relation with perceived landscape quality needs to be investigated in more detail.

## Conclusion

In line with calls for holistic and integrated landscape assessment and monitoring, as set out, for instance, in the European Landscape Convention (Council of Europe 2000), this study highlights the importance and feasibility of combining landscape ecology and social science landscape assessments. For instance, we found statistically significant negative relations between landscape ecology metrics such as urban sprawl and fragmentation, and public assessment. By highlighting such relationships, our findings allow policy and decision-makers to anticipate how change in physical landscape properties is likely to affect public views. Investigating the multifaceted society–landscape relations and perceptions is particularly relevant as we expect physical landscape change in the future through e.g. the impacts of climate change on landscapes as well as continued landscape development through urbanisation, and agricultural abandonment in more remote areas. Furthermore, we found relationships at the personal level, i.e., within people living within the same municipality, there were positive effects of perceived visual landscape quality on place attachment and satisfaction with landscape. Through the use of advanced statistical modelling we disentangle variation between individuals and between landscapes, which is essential for understanding the effects of landscape policies and landscape change affects how people assess the quality and their relations to these landscapes.

By integrating landscape ecology and social science approaches for policy-relevant research on landscapes and the non-material benefits they provide to people, this study brings to the fore additional insights from such interdisciplinary research. We argue that there is a need for future research that is methodologically pluralistic, and also conceptually

integrative and inclusive—allowing for multiple conceptualisations of landscapes and people–place relations to be integrated. Such approaches are needed for assessments to provide evidence for decision making to develop landscapes that are of high ecological quality and contribute to a high quality of life for the public.

**Acknowledgements** The data collection and research for this paper was financially supported through the Swiss Federal Office for the Environment (FOEN). The views and opinions expressed in this paper are those of the authors alone, and do not represent the policies or official positions of the FOEN or the institutions the authors work for. We gratefully acknowledge the comments and feedback of three anonymous reviewers and editorial board member and special issue editor M. Bürgi.

**Author contributions** FW: conceptualisation, methodology (public survey design), investigation, writing-original draft. CS: methodology (model creation), software, validation, formal analysis, writing-original draft. FK: project administration, funding acquisition, methodology (landscape ecology metrics). MH: conceptualisation, supervision, funding acquisition.

**Funding** Open Access funding provided by Lib4RI – Library for the Research Institutes within the ETH Domain: Eawag, Empa, PSI & WSL.

**Open Access** This article is licensed under a Creative Commons Attribution 4.0 International License, which permits use, sharing, adaptation, distribution and reproduction in any medium or format, as long as you give appropriate credit to the original author(s) and the source, provide a link to the Creative Commons licence, and indicate if changes were made. The images or other third party material in this article are included in the article's Creative Commons licence, unless indicated otherwise in a credit line to the material. If material is not included in the article's Creative Commons licence and your intended use is not permitted by statutory regulation or exceeds the permitted use, you will need to obtain permission directly from the copyright holder. To view a copy of this licence, visit <http://creativecommons.org/licenses/by/4.0/>.

## References

- Anton CE, Lawrence C (2014) Home is where the heart is: the effect of place of residence on place attachment and community participation. *J Environ Psychol* 40:451–461
- Appleton J (1975) *The experience of landscape*. Wiley, London
- Appleton J (1984) Prospects and refuges re-visited. *Landsc J* 3(2):91–103
- Bieling C (2014) Cultural ecosystem services as revealed through short stories from residents of the Swabian Alb (Germany). *Ecosyst Serv* 8:207–215



- Bonaiuto M, Aiello A, Perugini M, Bonnes M, Ercolani AP (1999) Multidimensional perception of residential environment quality and neighbourhood attachment in the urban environment. *J Environ Psychol* 19(4):331–352
- Bonaiuto M, Fornara F, Bonnes M (2003) Indexes of perceived residential environment quality and neighbourhood attachment in urban environments: a confirmation study on the City of Rome. *Landsc Urban Plan* 65(1–2):41–52
- Bourassa SC (1988) Toward a theory of landscape aesthetics. *Landsc Urban Plan* 15(3–4):241–252
- Brown G, Raymond C (2007) The relationship between place attachment and landscape values: toward mapping place attachment. *Appl Geogr* 27(2):89–111
- Buijs AE, Elands BHM, Langers F (2009) No wilderness for immigrants: cultural differences in images of nature and landscape preferences. *Landsc Urban Plan* 91(3):113–123
- Butler A (2016) Dynamics of integrating landscape values in landscape character assessment: the hidden dominance of the objective outsider. *Landsc Res* 41(2):239–252
- Cassatella C, Peano A (eds) (2011) *Landscape Indicators: assessing and monitoring landscape quality*. Springer. <https://doi.org/10.1007/978-94-007-0366-7>
- Chan KMA, Satterfield T, Goldstein J (2012) Rethinking ecosystem services to better address and navigate cultural values. *Ecol Econ* 74:8–18
- Council of Europe (2000) European Landscape Convention. <http://www.coe.int/en/web/conventions/full-list/-/conventions/rms/0900001680080621>
- Dakin S (2003) There's more to landscape than meets the eye: towards inclusive landscape assessment in resource and environmental management. *Can Geogr* 47(2):185–200
- Daniel TC (2001) Whither scenic beauty? Visual landscape quality assessment in the 21st century. *Landsc Urban Plan* 54(1–4):267–281
- de San Eugenio Vela J, Nogué J, Govers R (2017) Visual landscape as a key element of place branding. *J Place Manag Dev* 10(1):23–44
- Devine-Wright P (2009) Rethinking NIMBYism: the role of place attachment and place identity in explaining place-protective action. *J Community Appl Soc Psychol* 19(6):426–441
- Díaz S, Pascual U, Stenseke M, Martín-López B, Watson RT, Molnár Z, Hill R, Chan KMA, Baste IA, Brauman KA, Polasky S, Church A, Lonsdale M, Larigauderie A, Leadley PW, van Oudenhoven APE, van der Plaats F, Schröter M, Lavorel S, Aumeeruddy-Thomas Y, Bukvareva E, Davies K, Demissew S, Erpul G, Failler P, Guerra CA, Hewitt CL, Keune H, Lindley S, Shirayama Y (2018) Assessing nature's contributions to people. *Science* 359(6373):270–272
- Dramstad WE, Tveit MS, Fjellstad WJ, Fry GLA (2006) Relationships between visual landscape preferences and map-based indicators of landscape structure. *Landsc Urban Plan* 78(4):465–474
- Federal Statistical Office (2011) Arealstatistik Schweiz. Zustand und Entwicklung der Landschaft Schweiz Ausgabe 2011/12. <https://www.bfs.admin.ch/bfs/en/home/statistics/catalogues-databases/publications.assetdetail.347999.html>. Accessed 2 July 2011
- Federal Statistical Office (2012) Gemeindetypologie und Stadt/Land-Typologie 2012. <https://www.bfs.admin.ch/bfs/de/home/grundlagen/raumgliederungen.assetdetail.2543323.html>. Accessed 2 July 2021
- Fokkema M, Greiff S (2017) *How performing PCA and CFA on the same data equals trouble*. Hogrefe Publishing, Gottingen
- Buchecker M, Frick J, Tobias S (2008) *Gesellschaftliche Ansprüche an den Lebens- und Erholungsraum. Eine praxisorientierte Synthese der Erkenntnisse aus zwei Forschungsprogrammen*. Swiss Federal Institute for Forest, Snow and Landscape Research WSL
- Fry G, Tveit MS, Ode Å, Velarde MD (2009) The ecology of visual landscapes: exploring the conceptual common ground of visual and ecological landscape indicators. *Ecol Indic* 9(5):933–947
- Gehring K (2006) Landscape needs and notions: preferences, expectations, leisure motivation, and the concept of landscape from a cross-cultural perspective. Swiss Federal Research Institute, WSL, Birmensdorf
- Gerbing DW, Anderson JC (1988) An updated paradigm for scale development incorporating unidimensionality and its assessment. *J Mark Res* 25(2):186–192
- Gobster PH (2002) Managing urban parks for a racially and ethnically diverse clientele. *Leis Sci* 24(2):143–159
- Gobster PH, Nassauer JI, Daniel TC, Fry G (2007) The shared landscape: what does aesthetics have to do with ecology? *Landsc Ecol* 22(7):959–972
- Gomez-Limon J, de Lucio Fernández JV (1999) Changes in use and landscape preferences on the agricultural-livestock landscapes of the central Iberian Peninsula (Madrid, Spain). *Landsc Urban Plan* 44(4):165–175
- Gould RK, Klain SC, Ardoin NM, Satterfield T, Woodside U, Hannahs N, Daily GC, Chan KM (2015) A protocol for eliciting nonmaterial values through a cultural ecosystem services frame. *Conserv Biol* 29(2):575–586
- Gustafson EJ (1998) Quantifying landscape spatial pattern: what is the state of the art? *Ecosystems* 1(2):143–156
- Hartig T, Evans GW (1993) Psychological foundations of nature experience. *Adv Psychol* 96:427–457
- Hartig T, Korpela K, Evans GW, Gärling T (1997) A measure of restorative quality in environments. *Scand Hous Plan Res* 14(4):175–194
- Hartig T, Mang M, Evans GW (1991) Restorative effects of natural environment experiences. *Environ Behav* 23(1):3–26
- Hay R (1998) Sense of place in developmental context. *J Environ Psychol* 18(1):5–29
- Hayes AF (2017) *Introduction to mediation, moderation, and conditional process analysis: a regression-based approach*. Guilford Publications, New York
- Hegetschweiler KT, Plum C, Fischer C, Brändli U-B, Ginzler C, Hunziker M (2017) Towards a comprehensive social and natural scientific forest-recreation monitoring instrument—a prototypical approach. *Landsc Urban Plan* 167:84–97
- Hennig EI, Schwick C, Soukup T, Orlitová E, Kienast F, Jaeger JAG (2015) Multi-scale analysis of urban sprawl in Europe: towards a European de-sprawling strategy. *Land Use Policy* 49:483–498
- Hu L, Bentler PM (1999) Cutoff criteria for fit indexes in covariance structure analysis: conventional criteria versus new alternatives. *Struct Equ Model Multidiscip J* 6(1):1–55

- Hunziker M, Buchecker M, Hartig T (2007) Space and place – two aspects of the human-landscape relationship. In: Kienast F, Wildi O, Gosh S (eds) *A changing world*. Springer, pp 47–62. [https://doi.org/10.1007/978-1-4020-4436-6\\_5](https://doi.org/10.1007/978-1-4020-4436-6_5)
- Hunziker M, Felber P, Gehring K, Buchecker M, Bauer N, Kienast F (2008) Evaluation of landscape change by different social groups. *Mt Res Dev* 28(2):140–147
- Hunziker M, Kienast F (1999) Potential impacts of changing agricultural activities on scenic beauty—a prototypical technique for automated rapid assessment. *Landscape Ecol* 14(2):161–176
- Jackson S, Fuller D, Dunsford H, Mowbray R, Hext S, MacFarlane R, Haggett C (2008) *Tranquility mapping: developing a robust methodology for planning support*. Report to the campaign to protect rural England. Centre for Environmental and Spatial Analysis, Northumbria University, Bluespace Environments and the University of Newcastle upon Tyne. <https://www.cpre.org.uk/resources/tranquillity-mapping-developing-a-robust-methodology-for-planning-support/>. Accessed 2 July 2021
- Jaeger JAG, Bertiller R, Schwick C, Cavens D, Kienast F (2010) Urban permeation of landscapes and sprawl per capita: new measures of urban sprawl. *Ecol Indic* 10(2):427–441
- Jaeger JAG, Bertiller R, Schwick C, Müller K, Steinmeier C, Ewald KC, Ghazoul J (2008) Implementing landscape fragmentation as an indicator in the Swiss Monitoring System of Sustainable Development (MONET). *J Environ Manag* 88(4):737–751
- Jivén G, Larkham PJ (2003) Sense of place, authenticity and character: a commentary. *J Urban Des* 8(1):67–81
- Jorgensen A (2011) Beyond the view: future directions in landscape aesthetics research. *Landscape Urban Plan* 100(4):353–355
- Kaplan R, Kaplan S (1989) *The experience of nature: a psychological perspective*. Cambridge University Press, Cambridge
- Kaplan S (1995) The restorative benefits of nature: toward an integrative framework. *J Environ Psychol* 15(3):169–182
- Kianicka S, Buchecker M, Hunziker M, Müller-Böker U (2006) Locals' and tourists' sense of place: a case study of a Swiss alpine village. *Mt Res Dev* 26(1):55–63
- Kienast F, Degenhardt B, Weilenmann B, Wäger Y, Buchecker M (2012) GIS-assisted mapping of landscape suitability for nearby recreation. *Landscape Urban Plan* 105(4):385–399
- Kienast F, Frick J, Steiger U (2013) *Neue Ansätze zur Erfassung der Landschaftsqualität. Zwischenbericht Landschaftsbeobachtung Schweiz (LABES), Umwelt-Wissen Nr. 1325*. [https://www.bafu.admin.ch/dam/bafu/de/dokumente/landschaft/uw-umwelt-wissen/neue\\_ansaetze\\_zuerfassungderlandschaftsqualitaet.pdf.download.pdf/neue\\_ansaetze\\_zuerfassungderlandschaftsqualitaet.pdf](https://www.bafu.admin.ch/dam/bafu/de/dokumente/landschaft/uw-umwelt-wissen/neue_ansaetze_zuerfassungderlandschaftsqualitaet.pdf.download.pdf/neue_ansaetze_zuerfassungderlandschaftsqualitaet.pdf). Accessed 2 July 2021
- Kienast F, Frick J, van Strien MJ, Hunziker M (2015) The Swiss Landscape Monitoring Program—a comprehensive indicator set to measure landscape change. *Ecol Model* 295:136–150
- Kühne O (2017) *Landschaftstheorie und Landschaftspraxis: eine Einführung aus sozialkonstruktivistischer Perspektive*. Springer, Wiesbaden
- Laumann K, Gärling T, Stormark KM (2001) Rating scale measures of restorative components of environments. *J Environ Psychol* 21(1):31–44
- Lewicka M (2011) Place attachment: how far have we come in the last 40 years? *J Environ Psychol* 31(3):207–230
- Lindemann-Matthies P, Briegel R, Schüpbach B, Junge X (2010) Aesthetic preference for a Swiss alpine landscape: the impact of different agricultural land-use with different biodiversity. *Landscape Urban Plan* 98(2):99–109
- Llausàs A, Nogué J (2012) Indicators of landscape fragmentation: the case for combining ecological indices and the perceptive approach. *Ecol Indic* 15(1):85–91
- Lothian A (1999) Landscape and the philosophy of aesthetics: is landscape quality inherent in the landscape or in the eye of the beholder? *Landscape Urban Plan* 44(4):177–198
- Mesch GS, Manor O (1998) Social ties, environmental perception, and local attachment. *Environ Behav* 30(4):504–519
- Meyer EK (2008) Sustaining beauty. The performance of appearance: a manifesto in three parts. *J Landscape Archit* 3(1):6–23
- Milcu AI, Hanspach J, Abson D, Fischer J (2013) Cultural ecosystem services: a literature review and prospects for future research. *Ecol Soc* 18(3):art44
- Muthén LK, Muthén BO (1998) *Mplus: the comprehensive modeling program for applied researchers: user's guide*. Muthén & Muthén
- Nassauer JI (1992) The appearance of ecological systems as a matter of policy. *Landscape Ecol* 6(4):239–250
- Natori Y, Chenoweth R (2008) Differences in rural landscape perceptions and preferences between farmers and naturalists. *J Environ Psychol* 28(3):250–267
- Ode Å, Hagerhall CM, Sang N (2010) Analysing visual landscape complexity: theory and application. *Landscape Res* 35(1):111–131
- Ode Å, Tveit MS, Fry G (2008) Capturing landscape visual character using indicators: touching base with landscape aesthetic theory. *Landscape Res* 33(1):89–117
- Ortiz-Burgos S (2016) Shannon–Weaver diversity index. In: *Encyclopedia of earth sciences series*, pp 572–573. [https://doi.org/10.1007/978-94-017-8801-4\\_233](https://doi.org/10.1007/978-94-017-8801-4_233)
- Plieninger T, Kizos T, Bieling C, Le Dü-Blayo L, Budniok M-A, Bürgi M, Crumley CL, Girod G, Howard P, Kolen J (2015) Exploring ecosystem-change and society through a landscape lens: recent progress in European landscape research. *Ecol Soc* 20(2):5
- Preacher KJ, Selig JP (2010) Monte Carlo method for assessing multilevel mediation: an interactive tool for creating confidence intervals for indirect effects in 1–1–1 multilevel models. [Computer software] <http://quantpsy.org/>
- Scholte SSK, van Teeffelen AJA, Verburg PH (2015) Integrating socio-cultural perspectives into ecosystem service valuation: a review of concepts and methods. *Ecol Econ* 114:67–78
- Siedentop S, Fina S (2012) Who sprawls most? Exploring the patterns of urban growth across 26 European countries. *Environ Plan A* 44(11):2765–2784
- Smith JS (2002) Rural place attachment in Hispano urban centers. *Geogr Rev* 92(3):432–451

- Stedman RC (2002) Toward a social psychology of place: predicting behavior from place-based cognitions, attitude, and identity. *Environ Behav* 34(5):561–581
- Stedman RC (2003) Is it really just a social construction? The contribution of the physical environment to sense of place. *Soc Nat Resour* 16(8):671–685
- Stephenson J (2008) The cultural values model: an integrated approach to values in landscapes. *Landsc Urban Plan* 84(2):127–139
- Ströbele M, Hunziker M (2017) Are suburbs perceived as rural villages? Landscape-related residential preferences in Switzerland. *Landsc Urban Plan* 163:67–79
- Strumse E (1996) Demographic differences in the visual preferences for agrarian landscapes in western Norway. *J Environ Psychol* 16(1):17–31
- Tobias S, Müller Wahl P (2013) Can place branding support landscape conservation in city-regions? A case study from Switzerland. *Land Use Policy* 30(1):266–275
- Tuan Y-F (1974) *Topophilia. In: a study of environmental perception, attitudes and values*. Prentice-Hall, Englewood Cliffs
- Turner MG (2005) Landscape ecology in North America: past, present, and future. *Ecology* 86(8):1967–1974
- Turner MG, Gardner RH (2001) *Landscape ecology in theory and practice*, vol 401. Springer, New York
- Tveit MS, Ode Å, Fry G (2006) Key concepts in a framework for analysing visual landscape character. *Landsc Res* 31(3):229–255
- Twigger-Ross CL, Uzzell DL (1996) Place and identity processes. *J Environ Psychol* 16(3):205–220. <https://doi.org/10.1006/jevp.1996.0017>
- Ulrich RS, Simons RF, Losito BD, Fiorito E, Miles MA, Zelson M (1991) Stress recovery during exposure to natural and urban environments. *J Environ Psychol* 11(3):201–230
- Van den Berg AE, Vlek CAJ, Coeterier JF (1998) Group differences in the aesthetic evaluation of nature development plans: a multilevel approach. *J Environ Psychol* 18(2):141–157
- Walz U, Stein C (2014) Indicators of hemeroby for the monitoring of landscapes in Germany. *J Nat Conserv* 22(3):279–289
- Wartmann FM, Frick J, Kienast F, Hunziker M (2021a) Factors influencing visual landscape quality perceived by the public. Results from a national survey. *Landsc Urban Plan* 208:104024
- Wartmann FM, Hunziker M, Kienast F (2021b) Landscape Monitoring Switzerland (LABES). Methodological and content-related further development (original: Programm Landschaftsbeobachtung Schweiz (LABES). Methodische und inhaltliche Weiterentwicklung 2018–2020). WSL-Report, vol 103. <https://www.dora.lib4ri.ch/wsl/islandora/object/wsl%3A26109>. Accessed 2 July 2021
- Wartmann FM, Purves RS (2018) Investigating sense of place as a cultural ecosystem service in different landscapes through the lens of language. *Landsc Urban Plan* 175:169–183

**Publisher's Note** Springer Nature remains neutral with regard to jurisdictional claims in published maps and institutional affiliations.