



# Nemaline myopathies: a current view

Caroline A. Sewry<sup>1,2</sup> · Jenni M. Laitila<sup>3,4</sup> · Carina Wallgren-Pettersson<sup>3,4</sup>

Received: 8 May 2019 / Accepted: 29 May 2019 / Published online: 21 June 2019  
© The Author(s) 2019

## Abstract

Nemaline myopathies are a heterogenous group of congenital myopathies caused by de novo, dominantly or recessively inherited mutations in at least twelve genes. The genes encoding skeletal  $\alpha$ -actin (*ACTA1*) and nebulin (*NEB*) are the commonest genetic cause. Most patients have congenital onset characterized by muscle weakness and hypotonia, but the spectrum of clinical phenotypes is broad, ranging from severe neonatal presentations to onset of a milder disorder in childhood. Most patients with adult onset have an autoimmune-related myopathy with a progressive course. The wide application of massively parallel sequencing methods is increasing the number of known causative genes and broadening the range of clinical phenotypes. Nemaline myopathies are identified by the presence of structures that are rod-like or ovoid in shape with electron microscopy, and with light microscopy stain red with the modified Gömöri trichrome technique. These rods or nemaline bodies are derived from Z lines (also known as Z discs or Z disks) and have a similar lattice structure and protein content. Their shape in patients with mutations in *KLHL40* and *LMOD3* is distinctive and can be useful for diagnosis. The number and distribution of nemaline bodies varies between fibres and different muscles but does not correlate with severity or prognosis. Additional pathological features such as caps, cores and fibre type disproportion are associated with the same genes as those known to cause the presence of rods. Animal models are advancing the understanding of the effects of various mutations in different genes and paving the way for the development of therapies, which at present only manage symptoms and are aimed at maintaining muscle strength, joint mobility, ambulation, respiration and independence in the activities of daily living.

**Keywords** Nemaline myopathy · Congenital myopathy · Rods · Rod bodies · Z line · Z disc · Animal models

## Introduction

Nemaline myopathies are a group of congenital myopathies defined by structures known as nemaline rods or nemaline bodies that stain red with the modified Gömöri trichrome technique (Dubowitz et al. 2013, 2019 in press). The spectrum of clinical phenotypes is wide and mutations in many genes (at least 12) are known to be associated with their

presence in muscle biopsies. Additional pathological features such as cores, caps and fibre type disproportion (FTD) as well as the presence of only a few fibres with rods overlap with other congenital myopathies and challenge the classification of all congenital myopathies. Although structural features such as rods can be identified in a muscle biopsy, it is the combination of clinical, histological and genetic features that define a disease entity.

Histopathological features have a major role in directing molecular analysis (Dubowitz et al. 2013), but the increasing use of gene panels and exome sequencing is identifying novel genes and expanding clinical phenotypes associated with known genetic defects that result in the formation of rods. Nemaline rods are not specific for nemaline myopathies and may also occur at normal myotendinous junctions, in normal extra-ocular (eye) muscles, in ageing muscle and occasionally in a variety of other inherited or acquired neuromuscular and other disorders (see Vandebrouck et al. 2010). In vitro studies of cultured cells have shown that rods can result from metabolic stress by depletion of adenosine

✉ Caroline A. Sewry  
c.sewry@imperial.ac.uk

<sup>1</sup> Dubowitz Neuromuscular Centre, UCL Institute of Child Health and Great Ormond Street Hospital, 30 Guilford Street, London WC1N 1EH, UK

<sup>2</sup> Wolfson Centre of Inherited Neuromuscular Disorders, RJA Orthopaedic Hospital, Oswestry SY10 7AG, UK

<sup>3</sup> Folkhälsan Institute of Genetics, Folkhälsan Research Center, Helsinki, Finland

<sup>4</sup> Department of Medical and Clinical Genetics, Medicum, University of Helsinki, Helsinki, Finland

triphosphate (Vandebrouck et al. 2010). The diagnosis of nemaline myopathies relies on a multidisciplinary approach with careful clinical, pathological and genetic correlations. Muscle magnetic resonance imaging (MRI) has also become an important contributor to diagnosis and highlights specific patterns of muscle involvement associated with particular mutated genes (Jungbluth 2017).

The term ‘nemaline myopathy’ is usually applied to the group of muscle disorders presenting at birth or early childhood with hypotonia and muscle weakness, but cases of adult onset have also been reported, including those referred to as sporadic late-onset nemaline myopathy, many of which are of autoimmune origin, or associated with HIV (see Schnitzler et al. 2017). In addition, some patients may not present until adulthood, but careful enquiry and clinical examination often identifies problems in childhood, albeit mild. This article focuses on the congenital and childhood onset forms.

## What is a nemaline rod?

Nemaline rods were identified in the 1950s and 1960s in muscle biopsies from children with hypotonia (Conen et al. 1963; Shy et al. 1963; Schnell et al. 2000). Conen et al. (1963) described the appearance of rod-like structures in the biopsy of a child with hypotonia as ‘myogranules’ which would now be described as rod bodies. The term ‘nemaline myopathy’ was suggested by Shy and co-workers after the Greek word for thread, *nema*, as it was not clear whether the structures were separate rod-like structures or an undulating thread-like structure.

Rods stain red with the modified Gömöri trichrome technique but electron microscopy may be needed to distinguish them from mitochondria, which also stain red, especially in very small muscle fibres in neonates. Rods are considered to be derived from Z lines as they can show continuity with Z lines; they have a similar lattice structure and express similar proteins, including  $\alpha$ -actinin, actin, tropomyosin, myotilin,  $\gamma$ -filamin, cofilin-2, telethonin and nebulin. Desmin is not present in the rods themselves but may be observed at their periphery. In some fibres in human muscle biopsies and in some animal models, the rod-like structures may appear as an integral part of the sarcomere, and as thickened Z lines compared with the normal width, which is usually fixed, according to the muscle fibre type (Luther 2009).

It is not yet clear how rods form, but myofibrillar rearrangement is considered to result in several abnormalities of the Z lines (Yu et al. 2004). Rods can be a secondary response to metabolic stress. Numerous rods were observed in a few patients with Complex I deficiency (Lamont et al. 2004) and in both muscle and non-muscle cells in vitro, they can be induced by a variety of substances that cause energy

shortage, including ATP depletion and heat shock proteins (Vandebrouck et al. 2010). This in vitro study suggested that rods formed under different conditions vary with regard to their cofilin and  $\alpha$ -actinin content. In addition, specific *ACTA1* mutations affected the localization of rods (nuclear versus cytoplasmic).

## Genetics

Nemaline myopathy may be caused by mutations in at least 12 genes (Table 1) and some cases are still molecularly unresolved. A recently identified gene is *TNNT3*, the gene encoding fast skeletal troponin 3 (Sandaradura et al. 2018). In addition, a homozygous mutation in *MYO18B*, encoding an unconventional myosin, has been reported as a possible cause of nemaline myopathy in an atypical case (Malfatti et al. 2015). Nemaline rods were also observed in association with a mutation in *MYO18B* but the patient also had Klippel–Feil anomaly, dysmorphic features, microcephaly and short stature (Alazami et al. 2015). Furthermore, in experimental models, myofibre assembly failed in a way not characteristic of nemaline myopathy biopsies (Berger et al. 2017; Gurung et al. 2017) but animal models often do not recapitulate human diseases precisely.

Other genes are also associated with the presence of nemaline rods or cap-like areas, but additional structural and clinical features are present in these patients and thus, they do not fulfil the criteria of nemaline myopathy as outlined at a European Neuromuscular Centre workshop (Wallgren-Pettersson et al. 1998), although publications may refer to them as such. For example *RYR1* and *TTN*, encoding the ryanodine receptor 1 and titin, respectively, (Sewry and Wallgren-Pettersson 2017; Oates et al. 2018), *EXOSC3* that encodes a component of the human RNA exosome complex (Pinto et al. 2019), *PPA2* that encodes the mitochondrial pyrophosphatase (Guimier et al. 2016), and *RYR3* encoding the ryanodine receptor 3 (Nilipour et al. 2018).

The commonest forms of nemaline myopathy are caused by mutations in the genes encoding skeletal muscle  $\alpha$ -actin (*ACTA1*) and nebulin (*NEB*). Several of the other causative genes have only been shown to be mutated in a few families each, although the wide application of novel gene sequencing methods is increasing the number of patients with verified genetic diagnoses (Wallgren-Pettersson et al. 2011; Malfatti and Romero 2016). Most of the *ACTA1* mutations are heterozygous dominantly inherited mutations, often arising de novo. *NEB* mutations are usually recessively inherited, but recently, the first dominantly inherited mutation was identified in *NEB*, causing a distal form of nemaline myopathy (Kiiski et al. 2019). A great number of different mutations have been identified in these two genes (Sparrow

**Table 1** Genetic causes of nemaline myopathies

Gene	Inheritance	Associated features in addition to cytoplasmic nemaline rods
<i>ACTA1</i>	de novo AD, AR, AD	Actin accumulation, nuclear rods, cores, cores + rods, zebra bodies, FTD
<i>NEB</i>	AR, (AD)	Distal myopathy, cores + rods, FTD
<i>TPM2</i>	AD, de novo AD, (AR)	FTD, caps, distal arthrogryposis, Escobar syndrome
<i>TPM3</i>	AD, de novo AD, AR	FTD, caps
<i>KBTBD13</i>	AD	Slow movement, cores + rods
<i>CFL-2</i>	AR	Ophthalmoplegia, cores, actin accumulation
<i>KLHL40</i>	AR	Ophthalmoplegia, rectangular rods with fringes
<i>KLHL41</i>	AR	No cores, typical pathology
<i>LMOD3</i>	AR	Rectangular rods with fringes
<i>MYPN</i>	AR	Cardiomyopathy, nuclear rods, caps
<i>TNNT1</i>	AR, (AD)	Excess connective tissue, contractures
<i>TNNT3</i>	AR	Arthrogryposis, excess connective tissue
<i>MYO18B<sup>a</sup></i>	AR	Cardiomyopathy, dysmorphism, Klippel–Feil anomaly

AR autosomal recessive, AD autosomal dominant, FTD fibre type disproportion

<sup>a</sup>*MYO18B* is not yet clearly identified as a ‘nemaline myopathy’ as it was associated with complex phenotypes, not typical of nemaline myopathy

et al. 2003; Feng and Marston 2009; Nowak et al. 2013; Lehtokari et al. 2014; Moreno et al. 2017).

Nine of the genes for nemaline myopathy encode proteins of the sarcomere, in addition, *MYO18B* is also a sarcomeric protein localized to the Z lines (Ajima et al. 2008) and may yet prove to be a causative gene of nemaline myopathy, although the phenotype of affected patients is different from others reported. The other three genes encode Kelch-like proteins, a large family of proteins possibly associated with thin filament regulation (Wallgren-Pettersson et al. 2011; Gupta and Beggs 2014; Malfatti and Romero 2016).

Nemaline myopathies occur all over the world. Some mutations have arisen as founder mutations, such as the deletion of the entire exon 55 of *NEB* in persons of Ashkenazi Jewish ancestry, with a world-wide distribution (Anderson et al. 2004; Lehtokari et al. 2009), and the *TNNT1* mutation (E180X in exon 11 causing a stop codon) in the Amish population (Johnston et al. 2000). Probable founder mutations have also been identified in *TPM3* (deletion of the first nucleotide of the last exon, c.913delA) in the Turkish population (Lehtokari et al. 2008), *KLHL40* (c.1582G>A) in the Japanese, Kurdish and Turkish populations (Ravenscroft et al. 2013), *ACTA1* (p.Asp181fsX10) in the Pakistani population (Nowak et al. 2007), *KBTBD13* (c.1222C>T) in the Low Countries of The Netherlands and Belgium (Sambuughin et al. 2010), three mutations in *NEB* (p.Ser6366Ile in ex122, p.Thr7382Pro in ex151, and p.Thr6350Profs\*4 in ex122) in the Finnish population (Lehtokari et al. 2014) and in *LMOD3* (c.1648c>T) in German and Austrian populations (Schatz et al. 2018).

Currently, many mutations are identified by screening panels of genes known to be associated with nemaline myopathy.

There is often difficulty, however, with mutation detection, especially in *NEB*. It is an extremely large gene (183 exons), giving rise to many isoforms in both skeletal muscle and brain (Laitila et al. 2012). The gene has multiple splice sites and a triplicate repeat region, where the most common large variants of the gene are found (Kiiski et al. 2016). Identifying both mutations in *NEB* in a patient may also be difficult because most patients have two private mutations anywhere along the length of the gene, and some of them are easily missed using massive parallel sequencing methods (Kiiski et al. 2016). Determining the pathogenicity of especially missense variants, which are numerous in *NEB*, constitutes a further diagnostic challenge. Recent advances include a targeted array which, in many patients, has helped to identify the second mutation (Kiiski et al. 2016; Zenagui et al. 2018), and also the development of functional assays for testing the effects on the protein of missense variants. For example, a nebulin in super repeat panel reveals stronger actin binding toward the ends of the super repeat region (Laitila et al. 2019), and how disease-causing mutations in *NEB* alter interactions with actin and tropomyosin (Marttila et al. 2014).

Although mutations in *ACTA1* are often dominant (and de novo, although sometimes inherited), a few rare instances of recessive transmission have also been reported (Nowak et al. 2013). Some of these recessive mutations are null mutations that result in no production of skeletal actin protein whilst in others it is present (Nowak et al. 2007; O’Grady et al. 2015).

## Clinical features

The spectrum of clinical phenotypes of nemaline myopathies is wide, even in individuals with mutations in the same gene, or in the same family. It ranges from neonates with severe disease and onset in utero, sometimes with fetal akinesia, to mild childhood-onset forms (Colombo et al. 2015; Jungbluth et al. 2018).

## Classification of nemaline myopathies

A clinical classification, mainly designed for gene discovery, was defined at an ENMC workshop in 1999 (Table 2; Wallgren-Pettersson and Laing 2000). Since then, altogether twelve genes and numerous mutations have been identified, and it has turned out that genotype–phenotype correlations are weak, or few and far between. Thus, we propose a revised, simplified classification, based on current knowledge of the spectrum of identified patients with nemaline myopathy (Table 3).

Among the categories in Table 2, the intermediate form was designated because there was a difference between typical (mainstream) nemaline myopathy and this group of patients, in that their course of the disease was more severe. This was exemplified by the use of a wheelchair from an earlier age than may occur in the typical form, where a wheelchair, if needed at all, is often only used from the pre-pubertal growth spurt. In other words, it was only possible to distinguish this category of patient in late childhood. It has turned out that no specific “intermediate” genes have been identified; the most common genes, *NEB* and *ACTA1*, may both cause this form. To our knowledge, there are few if any definite adult-onset cases with a proven genetic cause.

The rapidly progressive adult-onset form (SLONM) is often immune-mediated and responsive to treatment (see Schnitzler et al. 2017).

Since the current classification was established, additional novel clinical forms have been described, not fitting into the current classification. Examples of this are the “Amish” form caused by mutations in *TNNT1* with contractures, tremor and a progressive course (Johnston et al. 2000; Fox et al. 2018), and the form with slowness of movements and core-rod histology (Gommans et al. 2002; Sambuughin et al. 2010; de Winter and Ottenheijm 2017). There have also been publications describing patients with an unusual distribution of weakness, such as scapuloperoneal or distal weakness, or distal arthrogyriposis, and it can be argued that these should be classified as separate entities. However, most forms of nemaline myopathy have individual variation in the distribution of weakness, and a number of patients may have distal contractures early or late in the course of the disease, so that lines of division are difficult to draw between such “novel” entities and the forms already described. Thus, we argue that it is time for a new and simplified classification of nemaline myopathy, which would be useful for yielding at least an estimate of prognosis in an individual patient (Table 3).

The prognosis in the severe form is often grave, but there have been exceptions, where patients have shown improvement over time (Roig et al. 1987). The typical form often follows a static or only slowly progressive course, and some patients have shown improvement, e.g. related to active physical training. Onset in childhood or at juvenile age often implies a mild course, while recessively inherited *TNNT1* (Amish) nemaline myopathy follows a relentlessly progressive course, with thoracic immobility, restrictive lung disease and often death in childhood (Johnston et al. 2000; Fox

**Table 2** Current classification of nemaline myopathies

---

Severe nemaline myopathy
Intermediate nemaline myopathy
Typical (mainstream, classical) congenital nemaline myopathy
Mild (childhood or juvenile) onset form
Adult-onset forms
“Other” (unusual) forms

---

**Table 3** New proposed classification of nemaline myopathies

---

Severe nemaline myopathy (with contractures or fractures at birth, or with no respiratory effort or no movements at birth) ( <i>ACTA1</i> , <i>NEB</i> , <i>LMOD-3</i> , <i>KLHL40</i> , <i>KLHL41</i> , <i>TNNT3</i> , <i>TPM2</i> , <i>TPM3</i> )
Congenital nemaline myopathy (with perinatal onset and milestones delayed but reached) ( <i>NEB</i> , <i>ACTA1</i> , <i>CFL-2</i> , <i>TPM2</i> )
Mild (childhood or juvenile onset) nemaline myopathy ( <i>ACTA1</i> , <i>NEB</i> , <i>TPM2</i> , <i>TPM3</i> , <i>KBTBD13</i> , <i>MYPN</i> , dominant mutations in <i>TNNT1</i> )
Recessive <i>TNNT1</i> (Amish) nemaline myopathy
Childhood-onset nemaline myopathy with slowness of movements and core-rod histology ( <i>KBTBD13</i> )

---

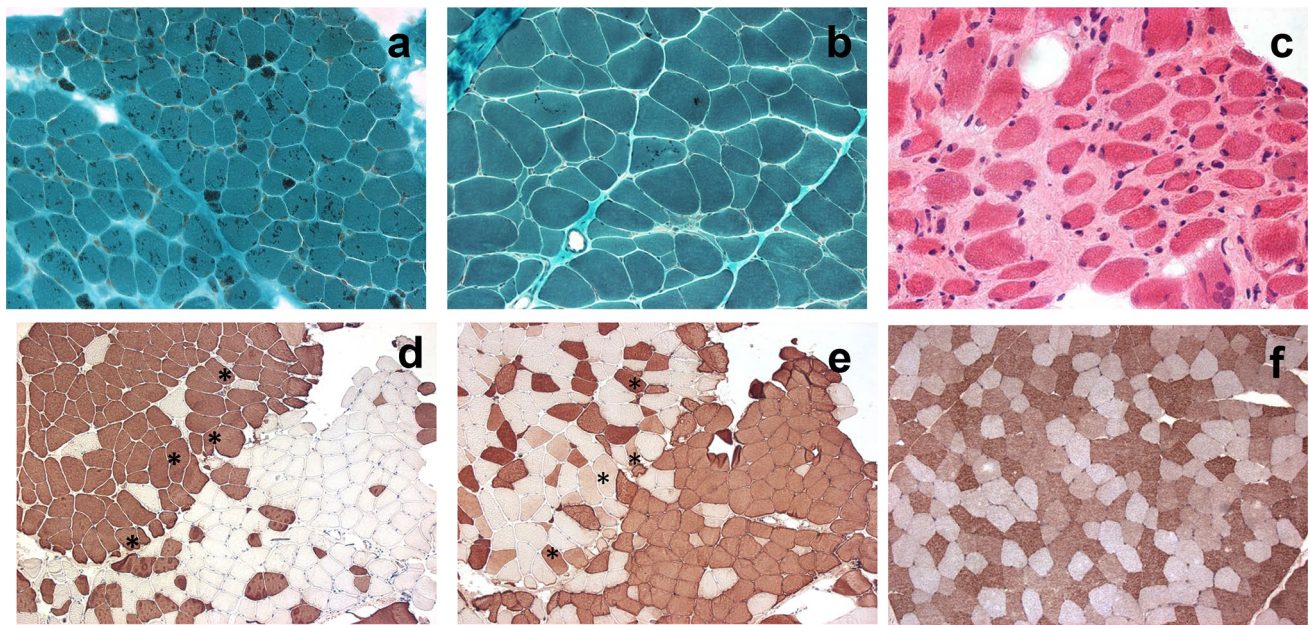
et al. 2018). The dominantly inherited form with slowness appears to follow a milder course.

Although most patients present with muscle hypotonia, there are rare patients with muscle hypertonia and a stiff gait (Marttila et al. 2014; Davidson et al. 2013), thought to stem from higher than normal calcium sensitivity (Jain et al. 2012; Donkervoort et al. 2015; Marston 2018). Muscle weakness is usually generalised, with involvement of the neck flexors, the face and proximal muscles, often with a later, additional distal involvement. Distal weakness is a particular presentation in some patients with mutations in *NEB*, but rods may not always be present in their muscle biopsies (Wallgren-Pettersson et al. 2007). Weakness of respiratory muscles is common and an important clinical feature to monitor regularly and manage according to international guidelines (Wallgren-Pettersson et al. 2011). Insidious onset of hypoventilation is the greatest risk for this group of patients and the most common cause of death. Thus, in the absence of expert monitoring of respiratory function, respiratory insufficiency may ensue suddenly and without any preceding symptoms (Wallgren-Pettersson et al. 2004). Extraocular muscles are usually spared, except in patients with mutations in *KLHL40* and *LMOD3*, who may have ophthalmoplegia (Ravenscroft et al. 2013; Yuen et al. 2014). Cardiac involvement is rare in patients with nemaline myopathy, but has been identified in a few patients with defects in *ACTA1*, *MYPN* or *MYO18B* (D'Amico et al. 2006; Kim et al. 2011; Finsterer and Stollberger 2015; Malfatti et al. 2015; Miyatake et al. 2017). Mutations in *TNNT1* encoding troponin T were first identified in homozygous form in the Amish population, but a few patients of Dutch descent, and others of non-Amish origin have also been described (van der Pol et al. 2014; Abdulhaq et al. 2016). Characteristics are tremor and severe progressive contractures, muscle weakness and atrophy with stiffness and thoracic rigidity. A dominantly inherited *TNNT1* mutation causing a different clinical picture has been reported, with similarities to the childhood onset form caused by mutations in other genes (Konersman et al. 2017). A severe clinical picture has been described in the patient with a homozygous *TNNT3* mutation, with contractures, hip dislocation (unusual in nemaline myopathy) and ventilator dependence until death at the age of 8 months (Sandaradura et al. 2018). Patients with mutation of *KBTDB13* often have an unusual slowness of muscle movements due to slow relaxation kinetics, and cores as well as rods (Gommans et al. 2003; Sambuughin et al. 2010; de Winter and Ottenheijm 2017). In all forms of nemaline myopathies, creatine kinase levels are usually normal or only slightly elevated.

## Histopathology

The characteristic cytoplasmic nemaline rods that stain red with the Gömöri trichrome technique in nemaline myopathies are usually numerous but the number and distribution per fibre can be variable (Fig. 1). The number also varies between muscles and there is no apparent correlation between clinical severity and the number of rods. Rods may be present in peripheral clusters, often near nuclei, or may be diffusely distributed, or in lines within fibres (Fig. 1). They are usually not observed in intrafusal fibres of spindles. Rods need to be distinguished from other structures that also stain red with the Gömöri trichrome technique, such as mitochondria and cytoplasmic bodies. In biopsies with very small fibres, rods may only be apparent with very high power optics. Examination of resin sections stained with toluidine blue or with electron microscopy is then helpful. An occasional cytoplasmic body may be observed in a few fibres but in three severely affected patients with the same missense *ACTA1* mutation (p.Asn94Lys), only dense accumulation of material reported as 'suggestive of cytoplasmic bodies' were seen, but no rods (Donkervoort et al. 2017). In addition to these patients, rods have not been observed in other patients, although mutations in genes that cause nemaline myopathy may be present. Repeat biopsies from a series of patients with *NEB* mutations and a distal myopathy did not reveal rods (Wallgren-Pettersson et al. 2007). Moreover, a family with progressive scapuloperoneal and distal weakness with an *ACTA1* mutation had no rods visible with light or electron microscopy (Zukosky et al. 2015). Mutations in *ACTA1* have also been found in cases with no rods but only cores (Kaindl et al. 2004). Sampling and variable distribution may also influence the detection of rods, for example rods may only be observed in the sample taken for electron microscopy.

Abnormal variation in fibre size is often present and type 1 atrophy or hypotrophy (fibres that have never attained normal dimensions) is common. Atrophy can be distinguished from hypotrophy by the presence of redundant basal lamina associated with atrophic fibres, using electron microscopy. There may also be hypertrophy of type 2 (fast myosin) fibres. This size variation may appear as FTD in which type 1 fibres are 12–25% smaller than type 2 and there are no additional pathological abnormalities such as rods or cores or central nuclei. FTD without structural defects can be associated with defects in several genes that cause a congenital myopathy, including several that are responsible for a nemaline myopathy (see Table 1) (Clarke 2011). Type 1 predominance, a common feature in congenital myopathies, is often present, but is not universal (Malfatti et al. 2014). Antibodies to myosin isoforms may show co-expression of slow and fast isoforms in some fibres, and there is often a variable number of fibres with foetal myosin. In addition, recent studies



**Fig. 1** Muscle biopsies from patients with **a** a mutation in *ACTA1* (Gömöri trichrome), **b** heterozygous mutations in *NEB* (Gömöri trichrome), **c** heterozygous mutations in *TNNT1* (haematoxylin and eosin), **d, e** heterozygous mutations in *NEB* (slow and fast myosin respectively), **f** control with no molecular defects causing a neuromuscular disorder (antibody to exon 143 of *NEB*). Note the variable

number and distribution of nemaline rods in a and b, the pronounced connective tissue in c, the uneven distribution of fibre types in d and e with several fibres co-expressing both isoforms (\*) and the three intensities of labelling of exon 143 of nebulin in f (most of the darker fibres express fast myosin)

of a few cases caused by *NEB* mutations have revealed a predominance of fibres with fast myosin and uneven distribution of fibre types in others (Fig. 1). Involvement of type 2/fast fibres is also seen in patients with mutations in the *TNNT3* gene encoding the troponin T isoform of fast fibres (Sandaradura et al. 2018).

Immunohistochemistry of nebulin does not show a total absence of protein, although an absence has been reported in rare patients which was dependent on the mutation and the antibody used (Sewry et al. 2001; Wallgren-Pettersson et al. 2002). Recent studies with antibodies specific to exons 143 and 144 of nebulin, that are differentially spliced, suggest that there is developmental regulation of these two exons, and that exon 143 appears later in myogenesis (Lam et al. 2018). In addition, there is a clear fibre typing pattern with the antibody to exon 143 that is highly expressed in fibres with fast myosin (Fig. 1).

Rods are restricted to type 1 fibres in patients with *TPM3* mutations, as the protein is only expressed in these fibres, and in patients expressing no *TNNT3* they were reported to be restricted to type 2 fibres (Sandaradura et al. 2018), but in most biopsies they are seen in both fibre types. Rods in most biopsies of nemaline myopathy patients are present in the cytoplasm but in some cases electron microscopy reveals both nuclear and cytoplasmic rods, or very occasionally only

nuclear rods (Hutchinson et al. 2006; Koy et al. 2007; Miyatake et al. 2017).

Areas with rods are often devoid of mitochondria, thus they may appear as core-like areas devoid of oxidative enzyme staining. Caution in interpretation is then needed. Sometimes cores and rods, however, may be in separate fibres or the core-like area lacking oxidative enzymes may be more extensive than the area with rods (Dubowitz et al. 2013; Scoto et al. 2013). Muscle biopsies from some nemaline myopathy patients show both rods and cores with disrupted myofibrils (Jungbluth et al. 2001; Agrawal et al. 2007; Romero et al. 2009; Dubowitz et al. 2013). Some of these patients have been classified as having a ‘core-rod myopathy’ (Hernandez-Lain et al. 2011), but they emphasise the overlapping pathological and clinical spectra of the nemaline myopathies and other congenital myopathies. Similarly, cap-like structures are regarded as being part of the histopathological spectrum of nemaline myopathies and not forming a distinct clinical entity. Although focal peripheral cap areas with myofibrillar disruption and thickened Z lines are associated with defects in the *TPM2* and *TPM3* genes (Marttila et al. 2014), they have also been described in association with defects in other genes associated with nemaline rods, *ACTA1*, *NEB* and *MYPN*. Both cap-like areas and rods can be present in the same sample and are part of

the spectrum of Z-line abnormalities in nemaline myopathies (Malfatti et al. 2013).

Muscle fibre necrosis and regeneration are not usually features of nemaline myopathy. Similarly, fibrosis is rarely seen but can occasionally be extensive, for example in patients with mutations in the *TNNT1* gene (Fig. 1).

It is rarely possible to identify the defective gene from histopathological features and few of them are specific. Areas of accumulation of actin filaments suggest *ACTA1* as the cause, although such accumulation has also been seen in the rare patients with *CFL-2* mutations and in an animal model for this gene defect (Agrawal et al. 2007; Gurniak et al. 2014). Nuclear rods can occur in nemaline patients with *ACTA1* mutations but they have also been observed in the rare cases of *MYPN* mutation and in patients with a myofibrillar myopathy, although the clinical phenotype of these is not that of a congenital myopathy (Dominguez Rubio et al. 2016; Miyatake et al. 2017).

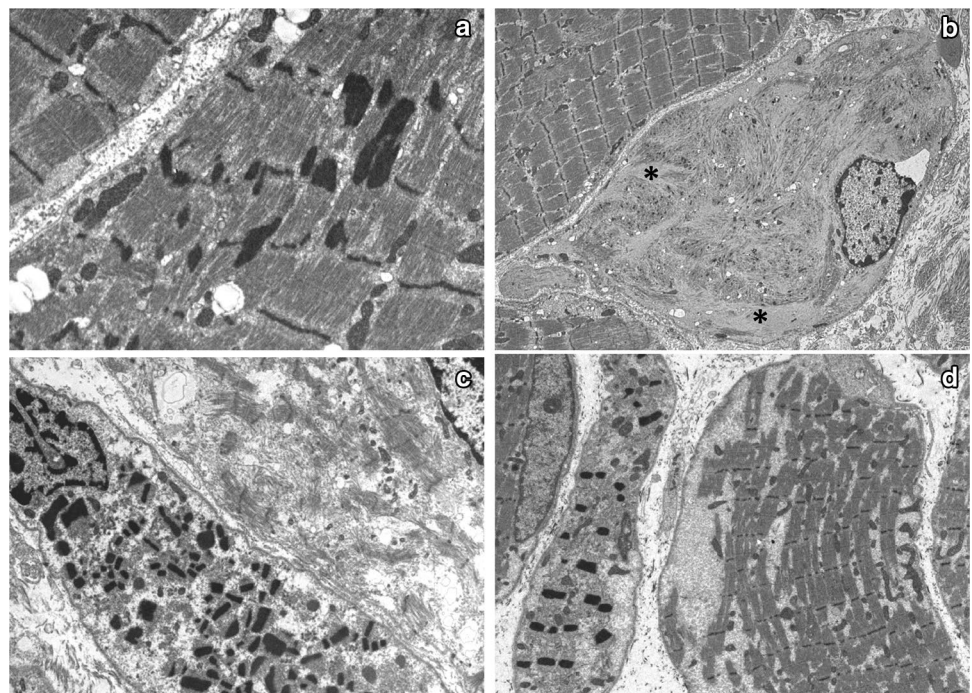
All fibres expressing cardiac actin without skeletal actin is a phenomenon seen in rare patients homozygous for *ACTA1* null mutations (Nowak et al. 2007) but other patients with recessively inherited *ACTA1* mutations retain skeletal actin (O’Grady et al. 2015). Zebra bodies are also part of the *ACTA1* pathological spectrum and observed in *ACTA1* null patients (Nowak et al. 2007). They defined the original case of ‘zebra body myopathy’ in whom an *ACTA1* mutation has been identified (Sewry et al. 2015). They are not specific to *ACTA1* nemaline myopathy, as occasional zebra bodies have been observed in a variety of disorders. Electron microscopy of biopsies from patients with *KLHL40* mutations shows

not only typical rods but also fibres with numerous small, rectangular rods in fibres with very few myofibrils (Fig. 2). However, patients with *LMOD3* mutations can also show similar rods (Fig. 2; Malfatti and Romero 2016). *LMOD3* biopsies have been reported to show rods with a fringe of myofibrils attached (Yuen et al. 2014), but we have observed similar rods associated with other nemaline myopathy gene mutations, in particular *KLHL40* (Fig. 2). Pairs of rods connected by thin filaments were also present in a patient with a homozygous *LMOD3* mutation (Michael et al. 2019).

## Animal and in vitro models of nemaline myopathy

To increase the understanding of the pathogenetic mechanisms leading to nemaline myopathy, several avenues of research have been opened. Animal and in vitro models of nemaline myopathy, in particular mouse and zebra fish models are being explored (Table 4). Moreover, functional studies are being performed in relation to specific gene mutations and their proteins, in vitro contraction studies of muscle fibres in relation to altered actin and tropomyosin molecules has identified differences in calcium sensitivity as a mechanism by which disruption of sarcomeric proteins leads to muscle weakness (Marston et al. 2013; Chan et al. 2016; de Winter and Ottenheijm 2017). Efforts are concentrating on the most commonly mutated genes causing nemaline myopathy, *ACTA1* and *NEB*, and descriptions have been published of a variety of knock-in and knock-out mouse

**Fig. 2** Electron micrographs of muscle biopsies from patients with nemaline myopathy caused by **a** a mutation in *ACTA1*, **b** homozygous mutation in *CFL2*, **c** heterozygous mutations in *KLHL40* and **d** *LMOD3*. Note in **a** the variable size of the nemaline rods and irregularities of the Z line, in **b** the very small rods and accumulation of thin actin filaments (\*) and in **c** and **d** the similar rectangular shape of the rods and the fringe-like filaments attached to many of them



**Table 4** Mouse models of nemaline myopathies

NM mouse model (publication)	Severity	Fibre type changes	Nemaline rods/Z-line features	In vitro force	Additional features
<i>Neb</i> -KO (Bang et al. 2006)	Severe/lethal and move but possibly unable to suck	Normal	Rods, thickened/fragmented Z lines	Excitation/contraction coupling not significantly altered. Stress generated < 50% of the wild-type	Actin filaments assembled in absence of nebulin, disassembled in contracting muscle
<i>Neb</i> -KO (Witt et al. 2006)	Severe/lethal. Stiff gait, progressive muscle weakness from days 10–20	(NR)	Rods, thickened Z lines, loss of myopalladin from Z line, abnormal Ca <sup>2+</sup> homeostasis	Maximal active tension reduced. Overlap between thin and thick filaments 50% of maximum (result of shorter thin filaments). Ca <sup>2+</sup> dependent recruitment of cross-bridges perturbed	Shortened thin filament length. Upregulation of sarcolipin, S100A4/A9, desmoplakin, CARP/ankrd2. Tmod1 reduced and translocated towards Z line
Het <i>Neb</i> -KO (Gineste et al. 2013a, b)	No observable phenotype in vivo, mild phenotype in vitro	–	–	Maximal force production reduced by around 16% in isolated muscle (related to shift toward slower proteomic phenotype)	Shift toward a slower proteomic phenotype. No impaired energy metabolism
<i>Neb</i> -cKO (Li et al. 2015)	Severe, appear normal at birth	Fibre type switching toward oxidative types, small 2B fibres	Rods, irregular, wavy and thickened Z lines	Large deficit in specific force, stiffness reduced, tension cost increased, lower number of force-generating cross-bridges	Hypertrophy of muscles rich in glycolytic fibres, hypertrophy of muscles rich in oxidative fibres. KLHL40 increased
<i>Neb</i> <sup>Δex55</sup> (Ottenheijm et al. 2013)	Severe. Shortened lifespan, respiratory failure possibly caused by severe diaphragm weakness	Diaphragm and EDL: decrease in type 2B fibres, increase in type 2A(X). (Joureau et al. 2016)	Rods seen with EM, at the position of the Z line	Maximal force generating capacity reduced, changes in cross-bridge cycling kinetics (reduced number of bound cross-bridges), and reduction of Ca <sup>2+</sup> sensitivity of force generation. ktr lower, tension cost higher	Shortened thin filaments
<i>Neb</i> <sup>ΔSH3</sup> (Yamamoto et al. 2013)	No observable phenotype in vivo, mild phenotype in vitro	–	Normal	Slightly altered force–frequency relationship. Slightly blunted sensitivity to electrical stimulation but only in a narrow range of frequencies	No structural or histological skeletal muscle abnormalities and no changes in gene expression or localization of interaction partners of the nebulin SH3 domain
<i>Neb</i> <sup>Δ163–165</sup> (Li et al. 2019)	Mild to moderate	Significant shift toward slower fibre types	SOL: decrease in Z-line width; EDL: large increase in Z-line width. Loss of nebulin C-terminus may influence Z-line width to a small degree	EDL displayed a drastic loss of force, force loss in the SOL subtle	Loss of C-terminus may affect nebulin stability but length of thin filaments retained. Myotilin and KLHL41 increased
<i>Neb</i> <sup>X2303H, Y935X</sup> (Laitila et al. submitted)	Mild to moderate	Smaller fast fibres in EDL, all fibres smaller in SOL	Rods predominantly in 2B fibres, thickened Z lines	Reduced specific force (single fibre level)	Core-like areas



Table 4 (continued)

NM mouse model (publication)	Severity	Fibre type changes	Nemaline rods/Z-line features	In vitro force	Additional features
<i>Acta1</i> -KO (Crawford et al. 2002)	Severe/lethal normal at birth and can breathe	No effect on fibre numbers, only size	No rods, normal	Lower force. Hemizygous mice produce intermediate levels of force	Lack of a haploinsufficiency phenotype reinforces that actin-based myopathies of both skeletal muscle and the heart result from functional effects caused by the mutant actin (gain-of-function mutations).
<i>Acta1</i> <sup>H40T</sup> (Nguyen et al. 2011)	Severe, early lethality, males more severe than females, decreased mobility and forearm grip	Fibre atrophy and increase in slow fibres but 2A hypertrophied in diaphragm (Lindqvist et al. 2013)	Cytoplasmic and intranuclear rods, Z-line streaming and widened. Rods in cardiomyocytes (Lindqvist et al. 2013)	Muscle weakness associated with an improved resistance to fatigue (+40%) and an increased energy cost (Gineste et al. 2013a, b)	Distinct eye and facial phenotypes; accumulation of thick and thin filaments
Tg( <i>ACTA1</i> ) <sup>D286G</sup> (Ravenscroft et al. 2011a)	Mild to moderate, less active	(NR)	Rods, thickened Z lines, myofibrillar disruption	Weakness in both isolated muscles and single muscle fibres. Less sensitive to Ca <sup>2+</sup>	High $\alpha$ B-crystallin and desmin in some fibres
Tg( <i>ACTA1</i> ) <sup>D286G/+</sup> . <i>Acta1</i> <sup>+/-</sup> (Ravenscroft et al. 2011a)	Severe	Large variations in myofibre size	Rods, Z-line fragmentation and streaming	Smaller number of myosin cross-bridges strongly bound to actin monomers (Ochala et al. 2012)	
Tg( <i>ACTA1</i> ) <sup>D286G</sup> .EGFP (Ravenscroft et al. 2011b)	Mild to moderate, less active	Fibre type composition and fibre sizes altered	Rods, rods attached to Z line, thickened Z lines	(NR)	Increasing mutant protein load from 25 to 45% changes mild phenotype to severe. Actin accumulation
Tg( <i>TPM3</i> ) <sup>M9R</sup> (Corbett et al. 2001)	Mild, late onset	Increase in slow fibres, compensatory hypertrophy of 2B and 2X fibres	Rods in clusters and areas surrounding the Z line, Z-line streaming and disruption of the sarcomeric register	Significantly weaker than wild-type muscle at 4 weeks of age	Core-like areas, ring fibres (2B fibres) common, internal nuclei and myofibrillar disruptions
					Cytoplasmic bodies
					Reversible muscle weakness; endurance exercise alleviated muscle weakness and reduced the number of nemaline rods (Loya et al. 2004). In vivo muscle improvement not associated with changes in muscle volume or energy metabolism (Gineste et al. 2014)

Table 4 (continued)

NM mouse model (publication)	Severity	Fibre type changes	Nemaline rods/Z-line features	In vitro force	Additional features
<i>Tnni1</i> -KD (Feng et al. 2009)	(NR)	Increase in fast fibres, atrophy and decrease in number of slow fibres	(NR)	Increased myofilament fatigability	Only diaphragm studied. Muscle atrophy
<i>Tnni1</i> -KD (Wei et al. 2014)	(NR)	Atrophy and loss of slow fibres. Compensatory hypertrophy of fast fibres	(NR)	Force production lower at low stimulation frequency (40 Hz). Decreased fatigue tolerance and impaired recovery	Fast TrnT increased by 60% Increase in number of type I characterized by small size and central nuclei
<i>Tnni1</i> -KO (Wei et al. 2014)	(NR)	Atrophy and loss of type I/ slow fibres. Compensatory hypertrophic growth of fast fibres	(NR)	Normalized force decreased by 25%. Force production lower at low stimulation frequency (40 Hz). Decreased fatigue tolerance and impaired recovery	Significant number of small type I with central nuclei
<i>Cft-2</i> -KO (Agrawal et al. 2012)	Severe weakness, little movement, possibly unable to suck	Elevated numbers of slow fibres, fibre size disproportion	Rods seen with EM, severe sarcomeric disruptions	(NR)	Accumulation of $\alpha$ -actin, $\alpha$ -actinin-2 and TPM Fast-fibre specific genes downregulated, slow fibre genes upregulated Mitochondrial abnormalities and internal nuclei. Muscle pathology differed from nemaline myopathy, but showed combined features of actin-associated myopathy and myofibrillar myopathy Internal nuclei
<i>Lmod3</i> -KO (Tian et al. 2015)	Severe weakness (heterozygotes normal)	Fast 2B fibre atrophy. Types 1 and 2A larger. More type 1 fibres in type 2B predominant muscles	Rods, thickened disrupted Z lines	(NR)	
<i>Lmod3</i> <sup><math>\Delta 2</math></sup> -KO <i>Lmod3</i> <sup><math>\Delta 10</math></sup> -KO (Cenik et al. 2015)	Severe	Reduced myofibre size	Rods, disrupted sarcomeres	(NR)	Internal nuclei, accumulation of desmin, upregulation of sarcolipin

**Table 4** (continued)

NM mouse model (publication)	Severity	Fibre type changes	Nemaline rods/Z-line features	In vitro force	Additional features
<i>KLHL40</i> -KO (Garg et al. 2014)	Severe/lethal	(NR)	Rods, thickened Z lines, Z-line streaming	> 50% reduction in hind limb strength	Complete disorganization in subset of fibres. Almost complete absence of <i>LMOD3</i> , nebulin 50% reduced. Increased expression of sarcomere genes. <i>Klh40</i> ± (heterozygous) mice also had reduced <i>LMOD3</i> , without growth defects or early lethality
<i>KLHL41</i> -KO (Ramirez-Martinez et al. 2017)	Severe/lethal (Het normal)	(NR)	Rods, Z-line streaming	(NR)	Aggregation and down-regulation of nebulin and only a slight decrease in <i>LMOD3</i> protein but not RNA, decrease in ssTNT and $\beta$ -TPM

NR not reported, *ktr* rate of tension redevelopment

models of causative mutations in these genes (Nowak et al. 2013; de Winter and Ottenheijm 2017). In addition, there are also mouse models of the more rarely affected genes *CFL-2*, *TPM2*, *TPM3*, *TNNT1*, *KLHL40*, *KLHL41*, *LMOD3* (see below).

Many of the mouse models have shown early lethality, precluding their use as testbeds for experimental therapies, while others are less severely affected. An ideal model for the most common (mainstream or typical) form of nemaline myopathy caused by two different mutations in *NEB* is being developed (Laitila et al. submitted for publication). Mice devoid of nebulin, and showing early lethality, mirror the human disease only to a limited extent and do not consistently show rods (Bang et al. 2006; Witt et al. 2006). As no human patients with mutations causing total absence of nebulin have been reported, and since it has been thought that nebulin works as a ruler for thin filament length and maintaining Z-line structure (Ottenheijm et al. 2012), it is remarkable that the knock-out mice do form sarcomeres despite the absence of nebulin.

In a mouse model of *TPM3* nemaline myopathy (Gineste et al. 2014), the onset of muscle weakness, caused at least partially by hypotrophy of type 1 fibers, appeared to be delayed by compensatory hypertrophy of type 2 fibers, as in human patients.

In *Tnnt1* mice, depicting the “Amish” form of nemaline myopathy, there was severe weakness of the diaphragm (Wei et al. 2014), as in human patients, and an increase in fast 2B fibre types, but this myosin isoform is not expressed in human limb muscle.

A mouse model of *CFL-2* nemaline myopathy showed severe weakness, small body size and early lethality. Histologically, there was actin accumulation (as seen in humans with *CFL-2* mutations) whereas nemaline bodies were small and only seen on EM in severely disrupted fibres (Agrawal et al. 2012; Gurniak et al. 2014).

Mouse models of *LMOD3* nemaline myopathy showed atrophy of fibres with fast myosin, a 50% reduction of grip strength (Tian et al. 2015), small body size and normal lifespan (Cenik et al. 2015).

Mouse models of *KLHL40* and *KLHL41* nemaline myopathy showed early lethality (within days to weeks from birth). *KLHL40*-deficient mice had a secondary reduction in nebulin and *LMOD3* whereas the *KLHL41* knock-out mice only showed reduction of nebulin (Garg et al. 2014; Ramirez-Martinez et al. 2017). The rectangular rods seen in human patients with nemaline myopathy caused by mutations in these two genes were not reported in the *Klh40* model but they were apparent in the *Klh41* knock-out mouse.

## Development of therapies for nemaline myopathies

There is currently no curative treatment for patients with nemaline myopathy, but much can be achieved by a multi-disciplinary approach, addressing the management of symptoms and maintaining muscle strength, mobility, joint movements, and independence in the activities of daily living through exercise and physiotherapy. Particularly important is regular monitoring of respiratory function and addressing orthopaedic problems, especially any scoliosis (Wallgren-Pettersson et al. 2004; Wang et al. 2012).

Tyrosine as a treatment for nemaline myopathy has been advocated, but an apparently beneficial effect in a limited clinical trial of dietary tyrosine supplementation (Ryan et al. 2008) was not supported up by studies of the nemaline myopathy Tg*ACTA1*<sup>D286G</sup> mouse model, nor the zebrafish model based on the same mutation (Messineo et al. 2018; Sztal et al. 2018a). Other amino acid supplements tested in zebrafish also showed no clear positive effect (Sztal et al. 2018a). The improvement in skeletal *Acta1* knock-out mice through upregulation of cardiac actin (Nowak et al. 2009) raises hopes for therapeutic implications for patients, but requires very early diagnosis. Another therapeutic option to explore is increasing the proportion of normal skeletal actin in heterozygous patients (Ravenscroft et al. 2011a, b). Interestingly, a zebrafish morpholino knock-down model of *ACTA1* nemaline myopathy showed a milder phenotype because of a transcriptional upregulation of an actin paralogue, i.e. through genetic compensation (Sztal et al. 2018b).

Experimental trials with myostatin in two mouse models of *Acta1* nemaline myopathy did not yield stronger mice, but in the Tg*ACTA1*<sup>D286G</sup> mouse model the body size increased (Tinklenberg et al. 2018) and a similar trial in the *Acta1*<sup>H40Y</sup> mouse model led to both larger size and longer life-span (Tinklenberg et al. 2016). The use of a myosin transgene to improve muscle function in an *Acta1* mouse model for nemaline myopathy (Lindqvist et al. 2016) and the use of calcium sensitizers to improve diaphragm function (Ochala 2010; Doorduyn et al. 2012) raise interesting perspectives for the future.

## Conclusions

Our increasing understanding of the pathogenetic mechanisms, and the lines of therapeutic options explored hitherto make it timely to plan a natural history study of nemaline myopathy and an international patient registry. In doing so, the international collaborative effort will pave the way for therapeutic trials, once non-hazardous and potentially effective treatment modalities become available.

**Acknowledgements** Financial support from Muscular Dystrophy UK, the Sigrid Jusélius Foundation, the Folkhälsan Research Foundation, the Finska Läkaresällskapet, the Medicinska understödsföreningen Liv och Hälsa, and l'Association Française contre les Myopathies (JL, CW-P) and the National Specialised Services to the Dubowitz Neuromuscular Centre and UCL Institute of Child Health and Great Ormond Street Hospital for Children (CAS) is gratefully acknowledged.

**Open Access** This article is distributed under the terms of the Creative Commons Attribution 4.0 International License (<http://creativecommons.org/licenses/by/4.0/>), which permits unrestricted use, distribution, and reproduction in any medium, provided you give appropriate credit to the original author(s) and the source, provide a link to the Creative Commons license, and indicate if changes were made.

## References

- Abdulhaq UN et al (2016) Nemaline body myopathy caused by a novel mutation in troponin T1 (TNNT1). *Muscle Nerve* 53:564–569. <https://doi.org/10.1002/mus.24885>
- Agrawal PB et al (2007) Nemaline myopathy with minicores caused by mutation of the CFL2 gene encoding the skeletal muscle actin-binding protein, cofilin-2. *Am J Hum Genet* 80:162–167. <https://doi.org/10.1086/510402>
- Agrawal PB, Joshi M, Savic T, Chen Z, Beggs AH (2012) Normal myofibrillar development followed by progressive sarcomeric disruption with actin accumulations in a mouse Cfl2 knockout demonstrates requirement of cofilin-2 for muscle maintenance. *Hum Mol Genet* 21:2341–2356. <https://doi.org/10.1093/hmg/dd5053>
- Ajima R et al (2008) Deficiency of Myo18B in mice results in embryonic lethality with cardiac myofibrillar aberrations. *Genes Cells: Devot Mol Cell Mech* 13:987–999. <https://doi.org/10.1111/j.1365-2443.2008.01226.x>
- Alazami AM, Kentab AY, Faqeh E, Mohamed JY, Alkhalidi H, Hijazi H, Alkuraya FS (2015) A novel syndrome of Klippel-Feil anomaly, myopathy, and characteristic facies is linked to a null mutation in MYO18B. *J Med Genet* 52:400–404. <https://doi.org/10.1136/jmedgenet-2014-102964>
- Anderson SL, Ekstein J, Donnelly MC, Keefe EM, Toto NR, LeVoci LA, Rubin BY (2004) Nemaline myopathy in the Ashkenazi Jewish population is caused by a deletion in the nebulin gene. *HumGenet* 115:185–190
- Bang ML et al (2006) Nebulin-deficient mice exhibit shorter thin filament lengths and reduced contractile function in skeletal muscle. *J Cell Biol* 173:905–916. <https://doi.org/10.1083/jcb.200603119>
- Berger J, Berger S, Li M, Currie PD (2017) Myo18b is essential for sarcomere assembly in fast skeletal muscle. *Hum Mol Genet* 26:1146–1156. <https://doi.org/10.1093/hmg/ddx025>
- Cenik BK et al (2015) Severe myopathy in mice lacking the MEF2/SRF-dependent gene leiomodlin-3. *J Clin Investig* 125:1569–1578. <https://doi.org/10.1172/jci80115>
- Chan C, Fan J, Messer AE, Marston SB, Iwamoto H, Ochala J (2016) Myopathy-inducing mutation H40Y in ACTA1 hampers actin filament structure and function. *Biochem Biophys Acta* 1862:1453–1458. <https://doi.org/10.1016/j.bbadis.2016.04.013>
- Clarke NF (2011) Congenital fiber-type disproportion. *Sem Pediatr Neurol* 18:264–271. <https://doi.org/10.1016/j.spen.2011.10.008>
- Colombo I et al (2015) Congenital myopathies: natural history of a large pediatric cohort. *Neurology* 84:28–35. <https://doi.org/10.1212/wnl.0000000000001110>

- Conen PE, Murphy EG, Donohue WL (1963) Light and electron microscopic studies of ‘myo granules’ in a child with hypotonia and muscle weakness. *Can Med Assoc J* 89:983–986
- Corbett MA et al (2001) A mutation in alpha-tropomyosin slow affects muscle strength, maturation and hypertrophy in a mouse model for nemaline myopathy. *Hum Mol Genet* 10(4):317–328. <https://doi.org/10.1093/hmg/10.4.317>
- Crawford KR et al (2002) Mice lacking skeletal muscle actin show reduced muscle strength and growth deficits and die during the neonatal period. *Mol Cell Biol* 22(16):5887–5896. <https://doi.org/10.1128/mcb.22.16.5887-5896.2002>
- D’Amico A et al (2006) Fatal hypertrophic cardiomyopathy and nemaline myopathy associated with ACTA1 K336E mutation. *Neuromuscul Disord* 16:548–552. <https://doi.org/10.1016/j.nmd.2006.07.005>
- Davidson AE et al (2013) Novel deletion of lysine 7 expands the clinical, histopathological and genetic spectrum of TPM2-related myopathies. *Brain* 136:508–521. <https://doi.org/10.1093/brain/aws344>
- de Winter JM, Ottenheijm CAC (2017) Sarcomere dysfunction in nemaline myopathy. *J Neuromuscul Dis* 4:99–113. <https://doi.org/10.3233/jnd-160200>
- Dominguez Rubio R et al (2016) Intranuclear protein aggregation in myofibrillar myopathies. *Neuromuscul Disord* 26:S191
- Donkervoort S et al (2015) TPM3 deletions cause a hypercontractile congenital muscle stiffness phenotype. *Ann Neurol* 78:982–994. <https://doi.org/10.1002/ana.24535>
- Donkervoort S et al (2017) Cytoplasmic body pathology in severe ACTA1-related myopathy in the absence of typical nemaline rods. *Neuromuscul Disord* 27:531–536. <https://doi.org/10.1016/j.nmd.2017.02.012>
- Doorduyn J, Sinderby CA, Beck J, Stegeman DF, van Hees HW, van der Hoeven JG, Heunks LM (2012) The calcium sensitizer levosimendan improves human diaphragm function. *Am J Respir Crit Care Med* 185:90–95. <https://doi.org/10.1164/rccm.201107-1268OC>
- Dubowitz V, Sewry CA, Oldfors A (2013) *Muscle biopsy: a practical approach*, 4th edn. Elsevier, Oxford
- Feng JJ, Marston S (2009) Genotype-phenotype correlations in ACTA1 mutations that cause congenital myopathies. *Neuromuscul Disord* 19:6–16. <https://doi.org/10.1016/j.nmd.2008.09.005>
- Feng HZ et al (2009) Deletion of a genomic segment containing the cardiac troponin I gene knocks down expression of the slow troponin T gene and impairs fatigue tolerance of diaphragm muscle. *J Biol Chem* 284(46):31798–31806. <https://doi.org/10.1074/jbc.M109.020826>
- Finsterer J, Stollberger C (2015) Review of cardiac disease in nemaline myopathy. *Pediatr Neurol* 53:473–477. <https://doi.org/10.1016/j.pediatrneurol.2015.08.014>
- Fox MD et al (2018) TNNT1 nemaline myopathy: natural history and therapeutic frontier. *Hum Mol Genet* 27:3272–3282. <https://doi.org/10.1093/hmg/ddy233>
- Garg A et al (2014) KLHL40 deficiency destabilizes thin filament proteins and promotes nemaline myopathy. *J Clin Invest* 124:3529–3539. <https://doi.org/10.1172/jci74994>
- Gineste C et al (2013a) In vivo and in vitro investigations of heterozygous nebulin knock-out mice disclose a mild skeletal muscle phenotype. *Neuromuscul Disord* 23(4):357–369. <https://doi.org/10.1016/j.nmd.2012.12.011>
- Gineste C et al (2013b) Combined MRI and 31P-MRS investigations of the ACTA1(H40Y) mouse model of nemaline myopathy show impaired muscle function and altered energy metabolism. *PLoS ONE* 8(4):e61517. <https://doi.org/10.1371/journal.pone.0061517>
- Gineste C et al (2014) Alterations at the cross-bridge level are associated with a paradoxical gain of muscle function in vivo in a mouse model of nemaline myopathy. *PLoS ONE* 9:e109066. <https://doi.org/10.1371/journal.pone.0109066>
- Gommans IM, van Engelen BG, ter Laak HJ, Brunner HG, Kremer H, Lammens M, Vogels OJ (2002) A new phenotype of autosomal dominant nemaline myopathy. *Neuromuscul Disord* 12:13–18
- Gommans IM et al (2003) A locus on chromosome 15q for a dominantly inherited nemaline myopathy with core-like lesions. *Brain: J Neurol* 126:1545–1551
- Guimier A et al (2016) Biallelic PPA2 mutations cause sudden unexpected cardiac arrest in infancy. *Am J Hum Genet* 99:666–673. <https://doi.org/10.1016/j.ajhg.2016.06.021>
- Gupta VA, Beggs AH (2014) Kelch proteins: emerging roles in skeletal muscle development and diseases. *Skel Muscle* 4:11. <https://doi.org/10.1186/2044-5040-4-11>
- Gurniak CB et al (2014) Severe protein aggregate myopathy in a knockout mouse model points to an essential role of cofilin2 in sarcomeric actin exchange and muscle maintenance. *Eur J Cell Biol* 93:252–266. <https://doi.org/10.1016/j.ejcb.2014.01.007>
- Gurung R, Ono Y, Baxendale S, Lee SL, Moore S, Calvert M, Ingham PW (2017) A zebrafish model for a human myopathy associated with mutation of the unconventional myosin MYO18B. *Genetics* 205:725–735. <https://doi.org/10.1534/genetics.116.192864>
- Hernandez-Lain A et al (2011) De novo RYR1 heterozygous mutation (I4898T) causing lethal core-rod myopathy in twins. *Eur J Med Genet* 54:29–33. <https://doi.org/10.1016/j.ejmg.2010.09.009>
- Hutchinson DO, Charlton A, Laing NG, Ilkovski B, North KN (2006) Autosomal dominant nemaline myopathy with intranuclear rods due to mutation of the skeletal muscle ACTA1 gene: clinical and pathological variability within a kindred. *Neuromuscul Disord* 16:113–121. <https://doi.org/10.1016/j.nmd.2005.11.004>
- Jain RK et al (2012) Nemaline myopathy with stiffness and hypertonia associated with an ACTA1 mutation. *Neurology* 78:1100–1103. <https://doi.org/10.1212/WNL.0b013e31824e8ebe>
- Johnston JJ et al (2000) A novel nemaline myopathy in the Amish caused by a mutation in troponin T1. *Am J Hum Genet* 67:814–821. <https://doi.org/10.1086/303089>
- Joureau B et al (2016) Muscle weakness in respiratory and peripheral skeletal muscles in a mouse model for Nebulin-based nemaline myopathy. *Neuromuscul Disord* 27(1):83–89. <https://doi.org/10.1016/j.nmd.2016.10.004>
- Joya J et al (2004) Muscle weakness in a mouse model of nemaline myopathy can be reversed with exercise and reveals a novel myofiber repair mechanism. *Hum Mol Genet* 13(21):2633–2645. <https://doi.org/10.1093/hmg/ddh285>
- Jungbluth H (2017) Myopathology in times of modern imaging. *Neuropathol Appl Neurobiol* 43:24–43. <https://doi.org/10.1111/nan.12385>
- Jungbluth H et al (2001) Mild phenotype of nemaline myopathy with sleep hypoventilation due to a mutation in the skeletal muscle alpha-actin (ACTA1) gene. *Neuromuscul Disord* 11:35–40
- Jungbluth H et al (2018) Congenital myopathies: disorders of excitation-contraction coupling and muscle contraction. *Nat Rev Neurol* 14:151–167. <https://doi.org/10.1038/nrneurol.2017.191>
- Kaindl AM et al (2004) Missense mutations of ACTA1 cause dominant congenital myopathy with cores. *J Med Genet* 41:842–848. <https://doi.org/10.1136/jmg.2004.020271>
- Kiiski K, Lehtokari VL, Loytynoja A, Ahlsten L, Laitila J, Wallgren-Pettersson C, Pelin K (2016) A recurrent copy number variation of the NEB triplicate region: only revealed by the targeted nemaline myopathy CGH array. *Eur J Hum Genet* 24:574–580. <https://doi.org/10.1038/ejhg.2015.166>
- Kiiski KJ et al (2019) Dominantly inherited distal nemaline/cap myopathy caused by a large deletion in the nebulin gene. *Neuromuscul Disord* 29:97–107. <https://doi.org/10.1016/j.nmd.2018.12.007>

- Kim SY, Park YE, Kim HS, Lee CH, Yang DH, Kim DS (2011) Nemaline myopathy and non-fatal hypertrophic cardiomyopathy caused by a novel ACTA1 E239 K mutation. *J Neurol Sci* 307:171–173. <https://doi.org/10.1016/j.jns.2011.04.022>
- Konersman CG, Freyermuth F, Winder TL, Lawlor MW, Lagier-Tourenne C, Patel SB (2017) Novel autosomal dominant TNNT1 mutation causing nemaline myopathy. *Mol Genet Genom Med* 5:678–691. <https://doi.org/10.1002/mgg3.325>
- Koy A et al (2007) Nemaline myopathy with exclusively intranuclear rods and a novel mutation in ACTA1 (Q139H). *Neuropediatrics* 38:282–286. <https://doi.org/10.1055/s-2008-1065356>
- Laitila J et al (2012) Expression of multiple nebulin isoforms in human skeletal muscle and brain. *Muscle Nerve* 46:730–737. <https://doi.org/10.1002/mus.23380>
- Laitila J, Lehtonen J, Lehtokari VL, Sagath L, Wallgren-Pettersson C, Gronholm M, Pelin K (2019) A nebulin super-repeat panel reveals stronger actin binding toward the ends of the super-repeat region. *Muscle Nerve* 59:116–121. <https://doi.org/10.1002/mus.26350>
- Lam LT et al (2018) Two alternatively-spliced human nebulin isoforms with either exon 143 or exon 144 and their developmental regulation. *Sci Rep* 8:15728. <https://doi.org/10.1038/s41598-018-33281-6>
- Lamont PJ et al (2004) Nemaline rods and complex I deficiency in three infants with hypotonia, motor delay and failure to thrive. *Neuropediatrics* 35:302–306. <https://doi.org/10.1055/s-2004-821243>
- Lehtokari VL et al (2008) Identification of a founder mutation in TPM3 in nemaline myopathy patients of Turkish origin. *Eur J Hum Genet* 16:1055–1061. <https://doi.org/10.1038/ejhg.2008.60>
- Lehtokari VL et al (2009) The exon 55 deletion in the nebulin gene—single founder mutation with world-wide occurrence. *Neuromuscul Disord* 19:179–181. <https://doi.org/10.1016/j.nmd.2008.12.001>
- Lehtokari VL et al (2014) Mutation update: the spectra of nebulin variants and associated myopathies. *Hum Mutat* 35:1418–1426. <https://doi.org/10.1002/humu.22693>
- Li F et al (2015) Nebulin deficiency in adult muscle causes sarcomere defects and muscle-type-dependent changes in trophicity: novel insights in nemaline myopathy. *Hum Mol Genet* 24(18):5219–5233. <https://doi.org/10.1093/hmg/ddv243>
- Li F, Barton ER, Granzier H (2019) Deleting Nebulin's C-terminus reveals its importance to sarcomeric structure and function and is sufficient to invoke nemaline myopathy. *Hum Mol Genet* 28(10):1709–1725. <https://doi.org/10.1093/hmg/ddz016>
- Lindqvist J et al (2013) Distinct underlying mechanisms of limb and respiratory muscle fiber weaknesses in nemaline myopathy. *J Neuropathol Exp Neurol* 72(6):472–481. <https://doi.org/10.1097/NEN.0b013e318293b1cc>
- Lindqvist J, Levy Y, Pati-Alam A, Hardeman EC, Gregorevic P, Ochala J (2016) Modulating myosin restores muscle function in a mouse model of nemaline myopathy. *Ann Neurol* 79:717–725. <https://doi.org/10.1002/ana.24619>
- Luther PK (2009) The vertebrate muscle Z-disc: sarcomere anchor for structure and signalling. *J Muscle Res Cell Motil* 30:171–185. <https://doi.org/10.1007/s10974-009-9189-6>
- Malfatti E, Romero NB (2016) Nemaline myopathies: state of the art. *Revue Neurol* 172:614–619. <https://doi.org/10.1016/j.neuro.2016.08.004>
- Malfatti E et al (2013) Combined cap disease and nemaline myopathy in the same patient caused by an autosomal dominant mutation in the TPM3 gene. *Neuromuscul Disord* 23:992–997. <https://doi.org/10.1016/j.nmd.2013.07.003>
- Malfatti E et al (2014) Muscle histopathology in nebulin-related nemaline myopathy: ultrastructural findings correlated to disease severity and genotype. *Acta Neuropathol Commun* 2:44. <https://doi.org/10.1186/2051-5960-2-44>
- Malfatti E, Bohm J, Lacene E, Beuvin M, Romero NB, Laporte J (2015) A premature stop codon in MYO18B is associated with severe nemaline myopathy with cardiomyopathy. *J Neuromuscul Dis* 2:219–227. <https://doi.org/10.3233/jnd-150085>
- Marston S (2018) The molecular mechanisms of mutations in actin and myosin that cause inherited myopathy. *Int J Mol Sci* 19:2020. <https://doi.org/10.3390/ijms19072020>
- Marston S et al (2013) Mutations in repeating structural motifs of troponin cause gain of function in skeletal muscle myopathy patients. *Hum Mol Genet* 22:4978–4987. <https://doi.org/10.1093/hmg/ddt345>
- Marttila M et al (2014) Mutation update and genotype-phenotype correlations of novel and previously described mutations in TPM2 and TPM3 causing congenital myopathies. *Hum Mutat* 35:779–790. <https://doi.org/10.1002/humu.22554>
- Messineo AM et al (2018) L-tyrosine supplementation does not ameliorate skeletal muscle dysfunction in zebrafish and mouse models of dominant skeletal muscle alpha-actin nemaline myopathy. *Sci Rep* 8:11490. <https://doi.org/10.1038/s41598-018-29437-z>
- Michael E, Hedberg-Oldfors C, Wilmar P, Visuttijai K, Oldfors A, Darin N (2019) Long-term follow-up and characteristic pathological findings in severe nemaline myopathy due to LMOD3 mutations. *Neuromuscul Disord* 29:108–113. <https://doi.org/10.1016/j.nmd.2018.12.009>
- Miyatake S et al (2017) Biallelic mutations in MYPN, encoding myopalladin, are associated with childhood-onset, slowly progressive nemaline myopathy. *Am J Hum Genet* 100:169–178. <https://doi.org/10.1016/j.ajhg.2016.11.017>
- Moreno CAM et al (2017) Clinical and histologic findings in ACTA1-related nemaline myopathy: case series and review of the literature. *Pediatr Neurol* 75:11–16. <https://doi.org/10.1016/j.pediatrneurol.2017.04.002>
- Nguyen MAT et al (2011) Hypertrophy and dietary tyrosine ameliorate the phenotypes of a mouse model of severe nemaline myopathy. *Brain* 134:3513–3526. <https://doi.org/10.1093/brain/awr274>
- Nilipour Y et al (2018) Ryanodine receptor type 3 (RYR3) as a novel gene associated with a myopathy with nemaline bodies. *Eur J Neurol* 25:841–847. <https://doi.org/10.1111/ene.13607>
- Nowak KJ et al (2007) Nemaline myopathy caused by absence of alpha-skeletal muscle actin. *Ann Neurol* 61:175–184. <https://doi.org/10.1002/ana.21035>
- Nowak KJ et al (2009) Rescue of skeletal muscle alpha-actin-null mice by cardiac (fetal) alpha-actin. *J Cell Biol* 185:903–915. <https://doi.org/10.1083/jcb.200812132>
- Nowak KJ, Ravenscroft G, Laing NG (2013) Skeletal muscle alpha-actin diseases (actinopathies): pathology and mechanisms. *Acta Neuropathol* 125:19–32. <https://doi.org/10.1007/s00401-012-1019-z>
- Oates EC et al (2018) Congenital titinopathy: comprehensive characterization and pathogenic insights. *Ann Neurol* 83:1105–1124. <https://doi.org/10.1002/ana.25241>
- Ochala J (2010) Ca<sup>2+</sup> sensitizers: an emerging class of agents for counterbalancing weakness in skeletal muscle diseases? *Neuromuscul Disord* 20:98–101. <https://doi.org/10.1016/j.nmd.2009.11.010>
- Ochala J, Ravenscroft G, Laing NG, Nowak KG (2012) Nemaline myopathy-related skeletal muscle  $\alpha$ -actin (ACTA1) mutation, Asp286Gly, prevents proper strong myosin binding and triggers muscle weakness. *PLoS ONE* 7(9):e45923. <https://doi.org/10.1371/journal.pone.0045923>
- O'Grady GL et al (2015) Recessive ACTA1 variant causes congenital muscular dystrophy with rigid spine. *Eur J Hum Genet* 23:883–886. <https://doi.org/10.1038/ejhg.2014.169>
- Ottenheijm CA, Granzier H, Labeit S (2012) The sarcomeric protein nebulin: another multifunctional giant in charge of

- muscle strength optimization. *Front Physiol* 3:37. <https://doi.org/10.3389/fphys.2012.00037>
- Ottenheijm C, Buck D, De Winter JM et al (2013) Deleting exon 55 from the nebulin gene induces severe muscle weakness in a mouse model for nemaline myopathy. *Brain* 136(6):1718–1731. <https://doi.org/10.1093/brain/awt113>
- Pinto MM et al (2019) Sarcomeric disorganization and nemaline bodies in muscle biopsies of patients with EXOSC3-related type 1 pontocerebellar hypoplasia. *Muscle Nerv* 59:137–141. <https://doi.org/10.1002/mus.26305>
- Ramirez-Martinez A, Cenik BK, Bezprozvannaya S, Chen B, Bassel-Duby R, Liu N, Olson EN (2017) KLHL41 stabilizes skeletal muscle sarcomeres by nonproteolytic ubiquitination. *Life* 6:e26439. <https://doi.org/10.7554/elife.26439>
- Ravenscroft G et al (2011a) Mouse models of dominant ACTA1 disease recapitulate human disease and provide insight into therapies. *Brain* 134:1101–1115. <https://doi.org/10.1093/brain/awr004>
- Ravenscroft G, Jackaman C, Sewry CA et al (2011b) Actin nemaline myopathy mouse reproduces disease, suggests other actin Disease phenotypes and provides cautionary note on muscle transgene expression. *PLoS ONE* 6(12):e28699. <https://doi.org/10.1371/journal.pone.0028699>
- Ravenscroft G et al (2013) Mutations in KLHL40 are a frequent cause of severe autosomal-recessive nemaline myopathy. *Am J Hum Genet* 93:6–18. <https://doi.org/10.1016/j.ajhg.2013.05.004>
- Roig M, Hernandez MA, Salcedo S (1987) Survival from symptomatic nemaline myopathy in the newborn period. *Pediatr Neurosci* 13:95–97
- Romero NB et al (2009) Core-rod myopathy caused by mutations in the nebulin gene. *Neurology* 73:1159–1161. <https://doi.org/10.1212/WNL.0b013e3181bacf45>
- Ryan MM et al (2008) Dietary L-tyrosine supplementation in nemaline myopathy. *J Child Neurol* 23:609–613. <https://doi.org/10.1177/0883073807309794>
- Sambuughin N et al (2010) Dominant mutations in KBTBD13, a member of the BTB/Kelch family, cause nemaline myopathy with cores. *Am J Hum Genet* 87:842–847. <https://doi.org/10.1016/j.ajhg.2010.10.020>
- Sandaradura SA et al (2018) Nemaline myopathy and distal arthrogryposis associated with an autosomal recessive TNNT3 splice variant. *Hum Mutat* 39:383–388. <https://doi.org/10.1002/humu.23385>
- Schatz UA et al (2018) Evidence of mild founder LMOD3 mutations causing nemaline myopathy 10 in Germany and Austria. *Neurology* 91:e1690–e1694. <https://doi.org/10.1212/wnl.00000000000006428>
- Schnell C, Kan A, North KN (2000) ‘An artefact gone awry’: identification of the first case of nemaline myopathy by Dr RDK Reye. *Neuromuscul Disord* 10:307–312
- Schnitzler LJ et al (2017) Sporadic late-onset nemaline myopathy: clinico-pathological characteristics and review of 76 cases. *Orphanet J Rare Dis* 12:86. <https://doi.org/10.1186/s13023-017-0640-2>
- Scoto M et al (2013) Nebulin (NEB) mutations in a childhood onset distal myopathy with rods and cores uncovered by next generation sequencing. *Eur J Hum Genet* 21:1249–1252. <https://doi.org/10.1038/ejhg.2013.31>
- Sewry CA, Wallgren-Petersson C (2017) Myopathology in congenital myopathies. *Neuropathol Appl Neurobiol* 43:5–23. <https://doi.org/10.1111/nan.12369>
- Sewry C, Brown SC, Pelin K (2001) Abnormalities in the expression of nebulin in chromosome-2 linked nemaline myopathy. *Neuromuscul Disord* 11:146–153
- Sewry CA, Holton JL, Dick DJ, Muntoni F, Hanna MG (2015) Zebra body myopathy is caused by a mutation in the skeletal muscle actin gene (ACTA1). *Neuromuscul Disord* 25:388–391. <https://doi.org/10.1016/j.nmd.2015.02.003>
- Shy GM, Engel WK, Somers JE, Wanko T (1963) Nemaline myopathy. A new congenital myopathy. *Brain: J Neurol* 86:793–810
- Sparrow JC et al (2003) Muscle disease caused by mutations in the skeletal muscle alpha-actin gene (ACTA1). *Neuromuscul Disord* 13:519–531
- Ształ TE, McKaige EA, Williams C, Oorschot V, Ramm G, Bryson-Richardson RJ (2018a) Testing of therapies in a novel nebulin nemaline myopathy model demonstrate a lack of efficacy. *Acta Neuropathol Commun* 6:40. <https://doi.org/10.1186/s40478-018-0546-9>
- Ształ TE, McKaige EA, Williams C, Ruparella AA, Bryson-Richardson RJ (2018b) Genetic compensation triggered by actin mutation prevents the muscle damage caused by loss of actin protein. *PLoS Genet* 14:e1007212. <https://doi.org/10.1371/journal.pgen.1007212>
- Tian L et al (2015) Leiomodin-3-deficient mice display nemaline myopathy with fast-myofiber atrophy. *Dis Models Mech* 8:635–641. <https://doi.org/10.1242/dmm.019430>
- Tinklenberg J et al (2016) Treatment with ActRIIB-mFc produces myofiber growth and improves lifespan in the acta 1 H40Y murine model of nemaline myopathy. *Am J Pathol* 186:1568–1581. <https://doi.org/10.1016/j.ajpath.2016.02.008>
- Tinklenberg JA et al (2018) Myostatin inhibition using mRK35 produces skeletal muscle growth and tubular aggregate formation in wild type and TgACTA1D286G nemaline myopathy mice. *Hum Mol Genet* 27:638–648. <https://doi.org/10.1093/hmg/ddx431>
- van der Pol WL et al (2014) Nemaline myopathy caused by TNNT1 mutations in a Dutch pedigree. *Mol Genet Genom Med* 2:134–137. <https://doi.org/10.1002/mgg3.52>
- Vandebrouck A, Domazetovska A, Mokbel N, Cooper ST, Ilkovski B, North KN (2010) In vitro analysis of rod composition and actin dynamics in inherited myopathies. *J Neuropathol Exp Neurol* 69:429–441. <https://doi.org/10.1097/NEN.0b013e3181d892c6>
- Wallgren-Petersson C, Laing NG (2000) Report of the 70th ENMC International Workshop: nemaline myopathy, 11–13 June 1999, Naarden, The Netherlands. *Neuromuscul Disord* 10:299–306
- Wallgren-Petersson C, Beggs AH, Laing NG (1998) 51st ENMC International Workshop: nemaline myopathy. 13–15 June 1997, Naarden, The Netherlands. *Neuromuscul Disord* 8:53–56
- Wallgren-Petersson C et al (2002) Mutations in the nebulin gene can cause severe congenital nemaline myopathy. *Neuromuscul Disord* 12:674–679
- Wallgren-Petersson C, Bushby K, Mellies U, Simonds A (2004) 117th ENMC workshop: ventilatory support in congenital neuromuscular disorders—congenital myopathies, congenital muscular dystrophies, congenital myotonic dystrophy and SMA (II) 4–6 April 2003, Naarden, The Netherlands. *Neuromuscul Disord* 14:56–69
- Wallgren-Petersson C et al (2007) Distal myopathy caused by homozygous missense mutations in the nebulin gene. *Brain: J Neurol* 130:1465–1476. <https://doi.org/10.1093/brain/awm094>
- Wallgren-Petersson C, Sewry CA, Nowak KJ, Laing NG (2011) Nemaline myopathies. *Sem Pediatr Neurol* 18:230–238. <https://doi.org/10.1016/j.spenn.2011.10.004>
- Wang CH et al (2012) Consensus statement on standard of care for congenital myopathies. *J Child Neurol* 27:363–382. <https://doi.org/10.1177/0883073812436605>
- Wei B, Lu Y, Jin JP (2014) Deficiency of slow skeletal muscle troponin T causes atrophy of type I slow fibres and decreases tolerance to fatigue. *J Physiol* 592:1367–1380. <https://doi.org/10.1113/jphysiol.2013.268177>
- Witt CC, Burkart C, Labeit D, McNabb M, Wu Y, Granzier H, Labeit S (2006) Nebulin regulates thin filament length, contractility, and Z-disk structure in vivo. *EMBO J* 25:3843–3855. <https://doi.org/10.1038/sj.emboj.7601242>
- Yamamoto DL, Vitiello C, Zhang J et al (2013) The nebulin SH3 domain is dispensable for normal skeletal muscle structure but is required for effective active load bearing in mouse. *J Cell Sci* 126(Pt 23):5477–5489. <https://doi.org/10.1242/jcs.137026>
- Yu JG, Carlsson L, Thornell LE (2004) Evidence for myofibril remodeling as opposed to myofibril damage in human muscles

- with DOMS: an ultrastructural and immunoelectron microscopic study. *Histochem Cell Biol* 121:219–227. <https://doi.org/10.1007/s00418-004-0625-9>
- Yuen M et al (2014) Leiomodlin-3 dysfunction results in thin filament disorganization and nemaline myopathy. *J Clin Investig* 124:4693–4708. <https://doi.org/10.1172/jci75199>
- Zenagui R et al (2018) A reliable targeted next-generation sequencing strategy for diagnosis of myopathies and muscular dystrophies, especially for the giant titin and nebulin genes. *J Mol Diagn: JMD* 20:533–549. <https://doi.org/10.1016/j.jmoldx.2018.04.001>
- Zukosky K et al (2015) Association of a novel ACTA1 mutation with a dominant progressive scapuloperoneal myopathy in an extended family. *JAMA Neurol* 72:689–698. <https://doi.org/10.1001/jama-neurol.2015.37>

**Publisher's Note** Springer Nature remains neutral with regard to jurisdictional claims in published maps and institutional affiliations.