



# The Alarm Pheromone and Alarm Response of the Clonal Raider Ant

Lindsey E. Lopes<sup>1</sup> · Erik T. Frank<sup>2,3</sup> · Zsolt Kárpáti<sup>2,4</sup> · Thomas Schmitt<sup>2</sup> · Daniel J. C. Kronauer<sup>1,5</sup>

Received: 6 June 2022 / Revised: 2 December 2022 / Accepted: 8 December 2022 / Published online: 10 February 2023  
© The Author(s) 2023

## Abstract

Ants communicate via an arsenal of different pheromones produced in a variety of exocrine glands. For example, ants release alarm pheromones in response to danger to alert their nestmates and to trigger behavioral alarm responses. Here we characterize the alarm pheromone and the alarm response of the clonal raider ant *Ooceraea biroi*, a species that is amenable to laboratory studies but for which no pheromones have been identified. During an alarm response, ants quickly become unsettled, leave their nest pile, and are sometimes initially attracted to the source of alarm, but ultimately move away from it. We find that the alarm pheromone is released from the head of the ant and identify the putative alarm pheromone as a blend of two compounds found in the head, 4-methyl-3-heptanone and 4-methyl-3-heptanol. These compounds are sufficient to induce alarm behavior alone and in combination. They elicit similar, though slightly different behavioral features of the alarm response, with 4-methyl-3-heptanone being immediately repulsive and 4-methyl-3-heptanol being initially attractive before causing ants to move away. The behavioral response to these compounds in combination is dose-dependent, with ants becoming unsettled and attracted to the source of alarm pheromone at low concentrations and repulsed at high concentrations. While 4-methyl-3-heptanone and 4-methyl-3-heptanol are known alarm pheromones in other more distantly related ant species, this is the first report of the chemical identity of a pheromone in *O. biroi*, and the first alarm pheromone identified in the genus *Ooceraea*. Identification of a pheromone that triggers a robust, consistent, and conserved behavior, like the alarm pheromone, provides an avenue to dissect the behavioral and neuronal mechanisms underpinning chemical communication.

**Keywords** Chemical communication · Formicidae · *Ooceraea biroi* · Social behavior · 4-methyl-3-heptanone · 4-methyl-3-heptanol

## Introduction

Many animals use alarm signals to alert conspecifics to danger, yet the modality of these signals varies. Some animals use auditory alarm calls, while others use visual or chemosensory signals or a combination of signals from multiple modalities (Hollén and Radford 2009). Ants use alarm pheromones to alert their nestmates to danger (Blum 1969; Hölldobler and Wilson 1990; Vander Meer and Alonso 1998).

Alarm pheromones are generally present in detectable quantities in ants, which makes them tractable for chemical characterization (Blum 1969). Chemical components of the alarm pheromone are most commonly synthesized in the mandibular gland, Dufour's gland, and/or poison gland. Some alarm pheromones are multicomponent, and sometimes a single chemical compound is sufficient to induce a behavioral effect (Blum 1969). Components of the alarm pheromone are generally volatile, low molecular weight compounds, often terpenes, ketones, and aldehydes (Amoore

✉ Lindsey E. Lopes  
llopes@rockefeller.edu

✉ Daniel J. C. Kronauer  
dkronauer@rockefeller.edu

<sup>1</sup> Laboratory of Social Evolution and Behavior, The Rockefeller University, 1230 York Avenue, New York, NY 10065, USA

<sup>2</sup> Biocentre, Department of Animal Ecology and Tropical Biology, University of Würzburg, D-97074 Würzburg, Germany

<sup>3</sup> Department of Ecology and Evolution, Biophore, University of Lausanne, CH-1015 Lausanne, Switzerland

<sup>4</sup> Department of Chemical Ecology, Plant Protection Institute, Centre of Agricultural Research, ELKH, Budapest, Hungary

<sup>5</sup> Howard Hughes Medical Institute, New York, NY 10065, USA

et al. 1969; Blum 1969; Brückner et al. 2018; Pokorný et al. 2020; Han et al. 2022).

Alarm behaviors, which are triggered by alarm pheromones, are robust, innate, and present across ant species. However, alarm behaviors can be difficult to quantify, because “alarm behavior” is often used to describe diverse behavioral responses to danger. Broadly, alarm behaviors are characterized by increased alertness, sometimes in combination with moving away from or towards the dangerous stimulus (Hölldobler and Wilson 1990). Some behaviors that occur as part of alarm responses, such as trail-following, aggression, and recruitment, also occur independently from alarm responses, further complicating the characterization of alarm behavior in ants (Hölldobler and Wilson 1990).

Alarm behaviors are broken down into two broad categories, panic and aggressive alarm responses (Blum 1969). Behaviors associated with panic alarm responses include rapid non-directional movement, moving away from the source of alarm, and sometimes nest evacuations. Behaviors associated with aggressive alarm responses include rapid movement towards the source of alarm, assumption of defensive postures, and attack of foreign objects. Different alarm behaviors can be elicited depending on the species of ant, the blend and concentration of pheromone components, and the context in which alarm pheromone is released (Blum 1969; Hölldobler and Wilson 1990; Longhurst et al. 1980; Moser et al. 1968; Vander Meer and Alonso 1998).

Many ants use multicomponent alarm pheromones, which can include chemical components that elicit different behavioral responses (Blum 1969; Hölldobler 1995). In the case of the carpenter ant, *Camponotus obscuripes*, alarm behavior is triggered by a blend of formic acid, which is repulsive and released from the poison gland, and *n*-undecane, which is attractive and found in the Dufour’s gland (Fujiwara-Tsujii et al. 2006). Alarm behavior in these ants has different intensities which may depend, at least in part, upon the ratio and volatility of components in the alarm pheromone. In the weaver ant, *Oecophylla longinoda*, alarm pheromone is released from the mandibular gland, which has over thirty compounds present in detectable quantities (Bradshaw et al. 1975). Major chemical components of the mandibular gland secretion, 1-hexanol and hexanal, trigger alert and attraction, and less volatile minor components are thought to be markers for attack (Bradshaw et al. 1975, 1979).

Situation-specific differences in alarm responses have also been described for some ant species. When *Pogonomyrmex badius* harvester ants are alarmed, they can have high or low intensity alarm responses. The principal alarm pheromone of these ants is a ketone, 4-methyl-3-heptanone, that is released by the mandibular gland (McGurk et al. 1966). The low intensity behavioral response includes an increase in locomotion, antennae and head waving, movement in loops and circles, and periodic lowering of the gaster

to the ground. During high intensity behavioral responses, there is more locomotion, tighter circling, mandible opening, and less antennae/head waving. High intensity behavioral responses are more likely to occur close to the nest, while lower intensity responses generally occur farther from the nest in the foraging area (Wilson 1958; McGurk et al. 1966).

Here, we describe the alarm behavior of the clonal raider ant *Ooceraea biroi*, identify its putative alarm pheromone, and validate it using electroantennography and behavioral assays. *O. biroi* is a queenless species where all workers reproduce asexually and clonally (Ravary and Jaisson 2004; Kronauer et al. 2012), making it genetically accessible (Trible et al. 2017). *O. biroi* is thus a promising system to study the genetic and neuronal underpinnings of social behavior. However, so far, no pheromones have been identified in this species.

## Methods and Materials

### Colony Maintenance

Stock colonies of clonal line B *O. biroi* ants, a lineage originally collected in Jolly Hill, St. Croix (Kronauer et al. 2012), were maintained in the laboratory at 25 °C in Tupperware containers with a plaster of Paris floor. *O. biroi* colonies are phasic and alternate between reproductive and brood care phases. As described previously (Trible et al. 2017), during the brood care phase, stock colonies were fed with frozen *Solenopsis invicta* brood. For each round of experiments, 12–15 colonies of mixed age ants were established without brood from a single stock colony while the ants were in brood care phase.

### Experimental Arena and Colony Setup

Behavior experiments were conducted in arenas constructed from cast acrylic with a plaster of Paris floor. Each arena was made of four layers; the base layer, a layer of plaster of Paris, a layer with two cut out areas separated by a tunnel, and a top layer of clear acrylic with lids. The arenas were 7 cm × 2 cm in total, with a 2 cm × 0.3 cm tunnel separating two 2.5 cm × 2 cm areas (Fig. S1). Each area contained a 0.5 cm × 2 cm “stimulus chamber” separated from a 2 cm × 2 cm “nest chamber” by a cast acrylic mesh wall. The wall was laser cut from 0.8 mm thick cast acrylic with multiple holes with a diameter of ~50 μm, as described previously (Chandra et al. 2021). The clear acrylic lids of the nest and stimulus chambers were separate, allowing the experimenter to open the stimulus chamber without opening the nest chamber, thereby decreasing the likelihood of alarming the ants due to increased airflow. The floor of the tunnel was covered with vapor-permeable Tyvek paper to dissuade ants

from forming their nest in the tunnel, as described previously (Chandra et al. 2021).

In each arena, 30 ants were introduced without any brood. For the live ant and crushed body experiments (see below), 30 additional ants from the same stock colony were kept in a separate Petri dish with a plaster of Paris floor. These ants were used as the stimulus during experiments. Ants were fed every 1–2 days with *S. invicta* brood and allowed to lay eggs. About 7–10 days after introducing ants into the arenas, once ants had settled, laid eggs, and clustered into a tightly packed pile (the “nest”) in one of the two nest chambers (Fig. S1), we began behavioral experiments.

### Behavioral Assays with Agitated Ants and Body Parts

On each day of behavioral experiments, the acrylic lid of the stimulus chamber on the same side as the ants’ nest was removed. Alarm arenas were placed into an enclosed container with controlled light-emitted diode lighting (STN-A40K80-A3A-10B5M-12 V; Super Bright LEDs Inc, Earth City, Missouri, USA) and videos were taken using webcams (Item #V-U0021; Logitech V-U0021, Lausanne, Switzerland). Images were taken at a rate of 10 frames per second and 2,592 × 1,944-pixel resolution. Prior to adding a stimulus, baseline behavior was recorded for 5 min. Behavior was recorded for another 5 min after exposure to the stimulus.

For the live alarmed ant experiments, 4 min and 30 s into the recording, an ant from a separate dish was agitated by repeatedly picking her up and putting her down with forceps. This “alarmed ant” was then added to the open stimulus chamber at 5 min into the recording. In control experiments, a folded piece of filter paper was added into the stimulus chamber instead.

For the body part experiments, the head of an ant was removed using forceps. After recording baseline activity for 5 min, the head or headless body of the ant was crushed using forceps and then quickly added to the open stimulus chamber.

After each assay, the arena was removed, and the behavioral recording box was left open for 1–5 min prior to adding the next arena. The total number of ants in the arena was manually counted. Behavioral assays were performed every other day to allow ants to re-settle into a nest after being alarmed. After each behavioral assay, ants were fed with frozen *S. invicta* brood. The following day, the remaining food was removed.

### Chemical Analysis

To identify candidate alarm pheromone components from the head, we placed 5 dissected *O. biroi* heads, mesosomas, gasters, or full bodies in a glass-wool-packed thermodesorption tube and added it in the thermodesorber unit (TDU;

TD100-xr, Markes, Offenbach am Main, Germany). The thermodesorption tube was heated up to 260 °C for 10 min. The desorbed components were transferred to the cold trap (5 °C) to focus the analytes using N<sub>2</sub> flow in splitless mode. The cold trap was rapidly heated up to 310 °C at a rate of 60 °C per minute, held for 5 min, and connected to the gas-chromatography/mass-spectrometry unit (GC–MS, Agilent 7890B GC and 5977 MS, Agilent Technologies, Palo Alto, CA, USA) via a heated transfer line (300 °C). The GC was equipped with a HP-5MS UI capillary column (0.25 mm ID × 30 m; film thickness 0.25 μm, J & W Scientific, Folsom, CA, USA). Helium was the carrier gas using 1.2874 ml/min flow. The initial GC oven temperature was 40 °C for 1 min, then raised to 300 °C at 5 °C per min, where it was held for 3 min. The transfer line temperature between GC and MS was 300 °C. The mass spectrometer was operated in electron impact (EI) ionization mode, scanning *m/z* from 40 to 650, at 2.4 scans per second. Chemical compounds were first identified using the NIST library and later confirmed with co-elution of synthetic 4-methyl-3-heptanone (Pfaltz and Bauer M19160) and 4-methyl-3-heptanol (Sigma Aldrich M48309). Compounds eluting after 30 min were excluded from the analysis due to lack of volatility.

To estimate the absolute amount of alarm pheromone in one ant head we injected 75 ng of 4-methyl-3-heptanone and 25 ng of 4-methyl-3-heptanol into a glass-wool-packed thermodesorption tube and analyzed it using the same method as was used for the ant body parts. We then calculated the area under the peak for the two compounds and compared it to the area under the peak of the sample of 5 *O. biroi* heads (Fig. 2).

### Chemicals

96% 4-methyl-3-heptanone (mixture of stereoisomers) was purchased from Pfaltz and Bauer (Item #: M19160) and ≥ 99% 4-methyl-3-heptanol (mixture of stereoisomers) was purchased from Sigma-Aldrich (Item #: M48309). Compounds were freshly diluted on each day of behavioral experiments. Dilutions were made using 100% pentane purchased from Sigma-Aldrich (Item #: 236705) as the solvent and diluted compounds were kept in glass vials with a silicone/PFTE magnetic screw cap (Gerstel 093640–079-00) to prevent evaporation.

### Electroantennographic Recordings with Chemical Compounds

For the electroantennographic (EAG) recordings, the head of *O. biroi* was excised and inserted into a glass capillary (ID 1.17 mm, Syntech, Kirchzarten, Germany) filled with Ringer solution (Ephrussi and Beadle, 1936) and attached to the reference silver electrode. The tip of the antenna was

inserted into the recording glass electrode, which was also filled with Ringer solution. The antennal signal was 10 times amplified, converted to a digital signal by a high input impedance DC amplifier interface (IDAC-2, Syntech) and recorded with GC-EAD software (GC-EAD 2014, version 1.2.5, Syntech). Synthetic pheromone candidates (4-methyl-3-heptanone and 4-methyl-3-heptanol) were applied at 1, 10 and 100  $\mu\text{g}$  doses on a square filter paper ( $1 \times 1 \text{ cm}$ ), which was inserted into a Pasteur-pipette. Stimulus air (2 L/min) was led into a constant, humidified and charcoal filtered air stream (2 L/min) using a Stimulus Controller CS-55 (Syntech). Each stimulation was given for 0.5 s. *N*-pentane, the solvent of the components, was used as a control stimulus. Three different doses of the pheromone candidates and the control were randomized and tested on 9 antennae.

Statistical analyses were performed in GraphPad Prism 9.0. To account for differences between individual antennae, we analyzed data using mixed-effects analysis with a Geisser-Greenhouse correction which treats each antenna as a random factor in the model. This method uses a compound symmetry covariance matrix and is fit using Restricted Maximum Likelihood (REML), and results can be interpreted like repeated measures ANOVA in cases with missing values. We then compared each compound/amount to the pentane solvent, using Dunnett's multiple comparisons test.

### Behavioral Assays with Chemical Compounds

The alarm behavioral assay was performed as described above. Four minutes and thirty seconds after starting the experiment, 50  $\mu\text{l}$  of the compound diluted in pentane or pentane alone (vehicle control) were added onto a small square of filter paper ( $\sim 1 \text{ cm}^2$ ) using a syringe. The pentane was allowed to evaporate for 30 s and then the paper was folded and placed into the open stimulus chamber 5 min into the recording.

### Behavioral Data Analysis

Behavioral recordings were analyzed by hand based on three metrics of interest, (1) number of ants outside the nest pile, (2) number of ants outside the nest chamber, and (3) number of ants touching the mesh wall of the stimulus chamber. A single frame of the recording was scored according to these metrics every 30 s for the duration of the 10-min recording. Ants were scored as being outside the nest pile if they were not touching any other ant within the region of the nest pile (Fig. S1). Ants were scored as being outside the nest chamber if at least half of their body was outside of the chamber that contained the nest. Ants were scored as touching the mesh wall if any part of their body was in contact with the mesh wall. When nests were touching the wall prior to adding a stimulus, only ants that were outside the nest pile were

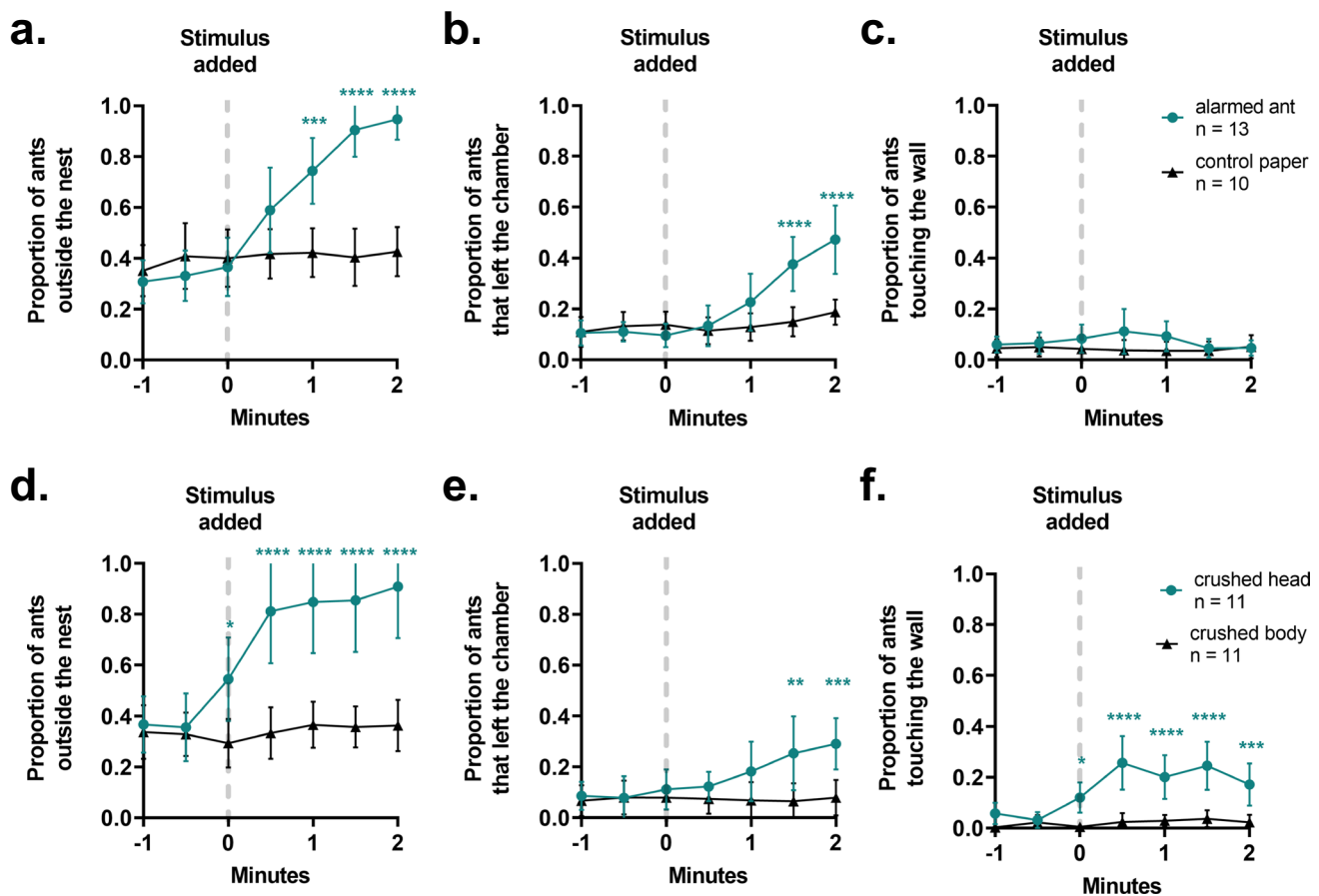
counted as touching the wall. The proportions of ants outside the nest pile, ants that left the nest chamber, and ants touching the mesh wall were calculated by dividing the number of ants performing each behavior by the total number of ants in the arena. Assays were excluded from further analysis if the average proportion of ants outside the nest pile prior to adding the stimulus was over 0.5, if there was more than one nest pile, or the nest pile was in the tunnel.

Statistical analyses were performed in GraphPad Prism 9.0. We limited the formal statistical analyses to the time window starting 1 min before the addition of the stimulus and ending 2 min after the stimulus had been added, because this was when relevant behavioral changes occurred. These analyses are fully consistent with behavioral dynamics across the entire time course (Fig. S2&3). To evaluate the effect of the stimulus over time, we performed a two-way repeated measures ANOVA. The effect of the stimulus at each timepoint was then analyzed with Šídák's multiple comparisons test when comparing two stimuli (live alarmed ant and crushed body part assays) and Dunnett's multiple comparisons test when comparing to the control stimulus (candidate alarm pheromone assays). To compare features of the behavioral response to 4-methyl-3-heptanone, 4-methyl-3-heptanol, and the blend of compounds, we calculated the area under the curve in the two minutes following addition of each stimulus. Because the different synthetic compounds were tested in different sets of experiments, we also compared the vehicle controls across these three sets of experiments to confirm there were no significant differences in ants outside the nest pile, ants that left the nest chamber, and ants touching the stimulus chamber wall. To evaluate the effect of the compound/blend across concentrations, we performed two-way ANOVAs with Tukey's multiple comparisons tests on the areas under the curves.

## Results

### Characterization of the Clonal Raider ant Alarm Behavior

We began characterizing the alarm behavior of *O. biroi* by quantifying features of the behavioral response of colonies to a live alarmed ant (Video S1). Prior to adding the alarmed ant to the stimulus chamber, ants were primarily settled in a nest pile on one side of the arena. When the live alarmed ant was added, ants left the nest pile (Fig. 1a, Table S1), and some also left the chamber that initially contained the nest pile (Fig. 1b, Table S1). This response was absent when adding a control, a piece of paper meant to mimic the potential increase in airflow from opening and adding an item into



**Fig. 1** Characterization of alarm behavior and localization of alarm pheromone in *O. biroi*. Quantification of features of the behavioral response of *O. biroi* colonies to a live alarmed ant (a–c) and crushed body parts of an ant (d–f). Data are included from 1 min prior to adding the stimulus until 2 min after. Individual datapoints indicate

means and error bars denote 95% confidence intervals. Sample sizes represent replicate colonies tested. Statistical comparisons were performed using a 2-way repeated measures ANOVA with Šidák's multiple comparisons test to compare individual timepoints. \* $p < 0.05$ , \*\* $p < 0.01$ , \*\*\* $p < 0.001$ , \*\*\*\* $p < 0.0001$

the stimulus chamber. Ants were not attracted to the live alarmed nestmate (Fig. 1c, Table S1).

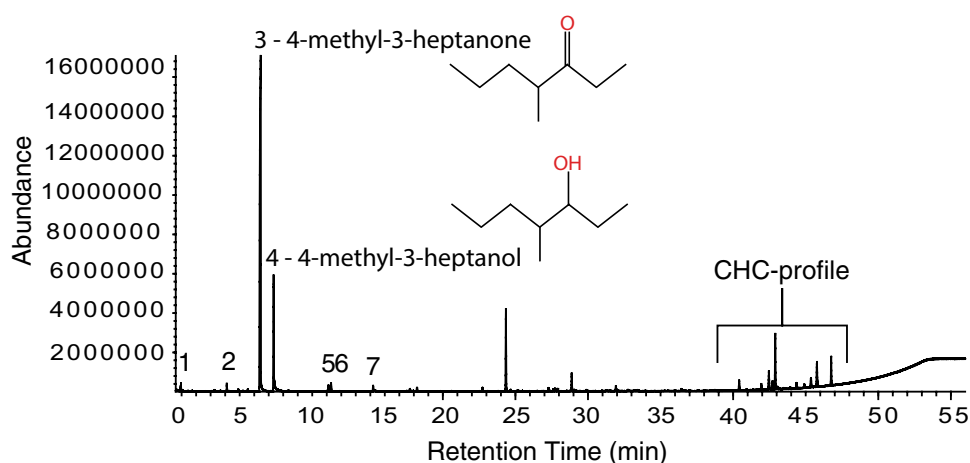
### Localization of the Clonal Raider Ant Alarm Pheromone

To determine from where in the body the alarm pheromone is released, we tested the behavioral response of colonies to crushed ant heads or to crushed bodies without heads (Video S2). We hypothesized that the alarm pheromone is coming from the mandibular glands within the head of the ant, or from the Dufour's and/or poison gland in the abdomen based on studies in other ant species (Blum 1969). In response to crushed heads, *O. biroi* colonies displayed alarm responses like those elicited by live alarmed ants, with an increase in ants outside the nest pile (Fig. 1d, Table S1) and ants leaving the nest chamber (Fig. 1e, Table S1). Interestingly, unlike in the response to live alarmed ants, ants were initially attracted to the

crushed heads (Fig. 1f, Table S1). No response was evident when the ants were exposed to crushed bodies without the head (Fig. 1d–f, Table S1). These data indicate that the volatile compound(s) found in the head of the ant are necessary and sufficient to induce an alarm response, meaning that the alarm pheromone is likely released from the head of *O. biroi*. We therefore conducted GC–MS analyses of the head contents and identified two main compounds, 4-methyl-3-heptanone (80.1% of the head contents) and 4-methyl-3-heptanol (16.3% of the head contents) (Fig. 2, Table 1). Both compounds only occurred in the head of the ants (Fig. 2, Fig. S4). Based on data from a single sample, we estimate there to be 3.21  $\mu\text{g}$  of 4-methyl-3-heptanone and 0.65  $\mu\text{g}$  of 4-methyl-3-heptanol in the head of an *O. biroi* worker.

If 4-methyl-3-heptanone and 4-methyl-3-heptanol make up the *O. biroi* alarm pheromone, then ants should be able to detect both compounds with their antennae. To test this, we utilized EAG recordings and found that both compounds

**Fig. 2** Chemical compounds in the head. Gas-chromatographic representation of one sample of 5 pooled heads. A detailed list of all chemical compounds found in the head (the numbered peaks) is provided in Table 1



**Table 1** Chemical compounds found in the head contents

Peak #	Compound	Ret. Index	Relative abundance [%]
1	Acetic acid	702	0.94
2	4-Methyl-3-hexanone	845	0.72
3	<b>4-Methyl-3-heptanone</b>	940	80.08
4	<b>4-Methyl-3-heptanol</b>	973	16.28
5	Undecane	1105	0.68
6	Nonanal	1111	0.87
7	Decanal	1213	0.43

Chemical compounds in bold were tested as alarm pheromones. Five heads were pooled per sample run in the GC–MS coupled to a thermodesorption unit as shown in Fig. 2

were detected (REML mixed effects model difference between treatments  $p=0.0022$ ; Fig. S5, Table S2).

### Behavioral Responses to Candidate Alarm Pheromone Components

To determine if 4-methyl-3-heptanone and 4-methyl-3-heptanol are behaviorally active and can trigger an alarm response, ants were exposed to both compounds individually and in combination at two doses, 260  $\mu\text{g}$  and 2600  $\mu\text{g}$ . Pentane was used as the solvent and vehicle control for all assays.

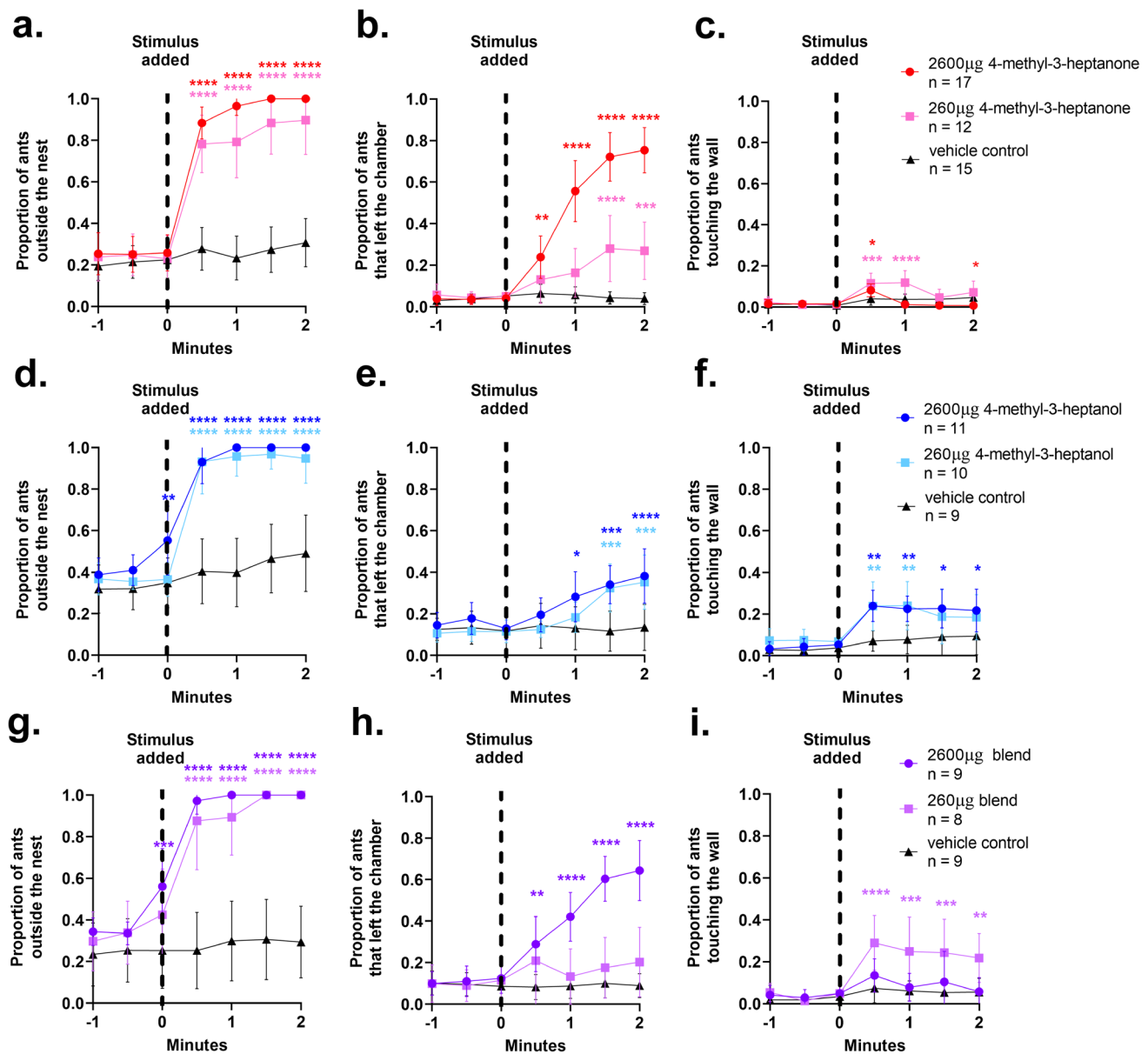
In response to 4-methyl-3-heptanone, ants rapidly left the nest pile (Fig. 3a, Table S3, Video S3) and left the nest chamber in a dose-dependent manner (Fig. 3b, Table S3). There was a small but significant increase in the proportion of ants touching the wall after exposure to both concentrations of 4-methyl-3-heptanone (Fig. 3c, Table S3). 260  $\mu\text{g}$  4-methyl-3-heptanone attracted ants for slightly longer than 2600  $\mu\text{g}$ , and by 1.5 min after addition of 4-methyl-3-heptanone there was no longer a significant difference between

either amount of compound and the vehicle control. However, the increase in the average proportion of ants attracted to 4-methyl-3-heptanone was small. The increase in the average proportion of ants that moved away from the stimulus was much greater, indicating that this compound is mostly repulsive to the ants, especially at high doses.

In response to 4-methyl-3-heptanol, ants also rapidly left the nest pile (Fig. 3d, Table S3, Video S4) and left the nest chamber in a dose-dependent manner, although to a lesser extent than in response to 4-methyl-3-heptanone (Fig. 3e, Table S3). Like the response to 4-methyl-3-heptanone, ants were initially attracted to 4-methyl-3-heptanol. However, both concentrations attracted a higher proportion of ants than 4-methyl-3-heptanone, and the attraction persisted beyond the first minute after exposure (Fig. 3f, Table S3). The higher proportion of attracted ants, along with the persistence of the attraction and fewer ants leaving the nest chamber, indicates that this compound could be more attractive to the ants compared to 4-methyl-3-heptanone.

To compare behavioral responses to 4-methyl-3-heptanone and 4-methyl-3-heptanol directly, we quantified the area under the curve for the first two minutes after adding the stimulus. As anticipated, there was no difference in ants outside the nest pile between both compounds (Fig. S6a, Table S4), but 4-methyl-3-heptanol was significantly more attractive to ants than 4-methyl-3-heptanone at both tested doses (Fig. S6c, Table S4), and at the high dose, 4-methyl-3-heptanone was significantly more repulsive to ants (Fig. S6b, Table S4). These results indicate that, while both compounds are sufficient to induce the alarm response, there are slight differences in the behavioral responses they trigger.

We created a synthetic blend of 90% 4-methyl-3-heptanone and 10% 4-methyl-3-heptanol to mimic the ratio of the two compounds in the head of *O. biroi*, where 4-methyl-3-heptanone is the major component and 4-methyl-3-heptanol is the most abundant minor component (Fig. 2,



**Fig. 3** Behavioral response to candidate alarm pheromone components. Quantification of features of the behavioral response of *O. biori* colonies to 4-methyl-3-heptanone (a–c), 4-methyl-3-heptanol (d–f), and a blend of 90% 4-methyl-3-heptanone and 10% 4-methyl-3-heptanol (g–i). Data are included from 1 min prior to adding the stimulus until 2 min after. Individual datapoints indicate means and

error bars denote 95% confidence intervals. Sample sizes represent replicate colonies tested. Statistical comparisons were performed using a 2-way repeated measures ANOVA with Dunnett's multiple comparisons test to compare individual timepoints to the vehicle control. \* $p < 0.05$ , \*\* $p < 0.01$ , \*\*\* $p < 0.001$ , \*\*\*\* $p < 0.0001$

Table 1). This blend triggered ants to rapidly leave the nest pile at both concentrations tested (Fig. 3g, Table S3, Video S5). At the high dose, ants were significantly more likely to leave the nest chamber (Fig. 3h, Table S3) but were not very attracted to the compound mix (Fig. 3i, Table S3). At the lower dose, however, ants did not leave the nest chamber, but were attracted to the source of the odor (Fig. 3h & i, Table S3). These results, in combination with the area under the curve analysis (Fig. S6, Table S4), indicate that

there is no obvious synergistic interaction between 4-methyl-3-heptanone and 4-methyl-3-heptanol in the synthetic alarm pheromone blend. Instead, the high dose of the blend is more repulsive, like 4-methyl-3-heptanone, and the low dose is more attractive, like 4-methyl-3-heptanol. While we did not observe any synergistic interaction between 4-methyl-3-heptanone and 4-methyl-3-heptanol, it is possible that this type of interaction occurs at very low doses, where a single

compound alone might not be sufficient to induce a behavioral response.

## Discussion

In this study, we characterized the alarm behavior of the clonal raider ant, *O. biroi*, and identified the chemical components of its alarm pheromone. The alarm response of *O. biroi* is characteristic of a panic alarm response, with ants becoming unsettled, leaving the nest, and moving away from the source of alarm. Alarm pheromone is released from the head of the ant, and we identified two volatile compounds as candidate alarm pheromone components. These two compounds, 4-methyl-3-heptanone and 4-methyl-3-heptanol, are known alarm pheromones in other ant species, are detected by the antennae of *O. biroi*, and are sufficient to trigger a behavioral alarm response, both alone and in combination. These results suggest that the alarm pheromone of *O. biroi* includes a blend of 4-methyl-3-heptanone and 4-methyl-3-heptanol. Future studies identifying the compounds released by alarmed ants will provide additional insight into the exact chemical composition of the alarm pheromone and whether there are minor components found in the head or elsewhere in the body that act to modulate the behavioral response to the major compounds tested here.

In cases where alarm pheromones in ants are released from the head, the mandibular gland is often the source (Wood et al. 2011). 4-methyl-3-heptanone and 4-methyl-3-heptanol have been found together in the mandibular glands or heads of other ants, including some species of *Eciton* army ants that are relatives of *O. biroi* in the ant subfamily Dorylinae (Riley et al. 1974; Pasteels et al. 1981; Hernández et al. 1999; Bento et al. 2007; Brückner et al. 2018). Together, this suggests that 4-methyl-3-heptanone and 4-methyl-3-heptanol are likely released from the mandibular gland in *O. biroi*. However, due to the small size of these ants, we were unable to verify this experimentally by extracting mandibular contents directly.

We studied behavioral responses of clonal raider ant colonies to two different doses of the synthetic alarm pheromone compounds, 260  $\mu\text{g}$  and 2600  $\mu\text{g}$ . While these amounts are substantially larger than the amount of each compound found in a single ant, we do not know the biologically relevant amount of compound the ants were exposed to in the behavioral arena. To prevent the pentane solvent from inducing a behavioral effect, we left the diluted compounds and controls to evaporate for 30 s on filter paper before exposing the ants. While 4-methyl-3-heptanone and 4-methyl-3-heptanol are less volatile than pentane, they are still quite volatile and some of the compounds evaporated during that time. Furthermore, stereochemistry is important for biological activity in many

pheromones (Mori 2007), and both 4-methyl-3-heptanone and 4-methyl-3-heptanol are chiral, with 4-methyl-3-heptanone having a single chiral center and 4-methyl-3-heptanol having two chiral centers (Riley and Silverstein 1974; Einterz et al. 1977; Zada et al. 2004). We have not yet identified the biologically relevant stereoisomer(s) used by *O. biroi*, and therefore used synthetic compounds that were a mixture of stereoisomers. It is possible that the activity of 4-methyl-3-heptanone and 4-methyl-3-heptanol in *O. biroi* is dependent on its stereochemistry, adding further uncertainty about the behaviorally relevant amount of compound perceived by the ants during behavioral experiments. Future work will be required to quantify the amount of compound that reaches the ants in our bioassay, and to conduct additional behavioral experiments with doses that more closely approximate what ants would perceive under naturalistic conditions.

The two compounds that make up the alarm pheromone in *O. biroi* elicit similar, though slightly different, behavioral responses at the doses tested here. 4-methyl-3-heptanone leads ants to become unsettled and move away from the compound after a quick initial period of attraction, whereas 4-methyl-3-heptanol also induces ants to become unsettled but is more attractive and less repulsive. In combination, these compounds trigger a dose-dependent behavioral response, where at low concentrations ants are initially attracted to the pheromone, but at high concentrations they are repelled and move away from the source of the compound. In other ant species that use multicomponent alarm pheromones, with components that elicit different behavioral effects, alarm behaviors can depend on the total or relative amounts of each component present in the alarm pheromone (Bradshaw et al. 1975, 1979; Fujiwara-Tsujii et al. 2006). We hypothesize that an individual ant may release more alarm pheromone or other ants in the colony may also release alarm pheromone in response to more urgent or dangerous threats, thereby amplifying the signal and triggering a behavioral response that might better protect the colony.

While 4-methyl-3-heptanone and 4-methyl-3-heptanol have been previously described as alarm pheromones in other ant species, this is the first description of the alarm pheromone and alarm behavior in a non-army ant doryline, and the first identified pheromone for *O. biroi*. Because *O. biroi* can be maintained under standardized laboratory conditions and is genetically accessible (Trible et al. 2017), identification of its alarm pheromone will facilitate future work studying the behavioral, genetic, and neuronal underpinnings of the alarm response in ants.

**Supplementary Information** The online version contains supplementary material available at <https://doi.org/10.1007/s10886-023-01407-4>.

**Acknowledgements** We thank Leonora Olivos Cisneros and Stephany Valdés Rodríguez for assistance with ant maintenance, the Rockefeller University Precision Instrumentation Technologies for assistance



with arena construction, Vikram Chandra and Asaf Gal for assistance with arena design and behavioral data analysis, and Yuko Ulrich for providing ants for chemical analyses. We also thank Yuko Ulrich and members of the Laboratory of Social Evolution and Behavior for helpful conversations.

**Author Contributions** All authors contributed to study conception and design. Lindsey E. Lopes performed behavioral experiments and data analysis, with guidance from Daniel J. C. Kronauer. Erik T. Frank performed chemical experiments and data analysis, with guidance from Thomas Schmitt. Erik T. Frank and Zsolt Kárpáti performed the electroantennographic recordings and analyzed the data. Lindsey E. Lopes and Daniel J. C. Kronauer wrote a first draft of the manuscript, and all authors contributed to the final manuscript.

**Funding** This work was supported by the National Institute of General Medical Sciences of the NIH under Award R35GM127007 to D.J.C.K. The content is solely the responsibility of the authors and does not necessarily represent the official views of the NIH. Additional support was provided by a Faculty Scholars Award from the Howard Hughes Medical Institute to D.J.C.K. L.E.L. was supported by an NSF Graduate Research Fellowship under award number DGE 194642. This work was supported in part by a grant to The Rockefeller University from the Howard Hughes Medical Institute through the James H. Gilliam Fellowships for Advanced Study program. T.S. acknowledges the support by the DFG State major instrumentation program and the State of Bavaria, Germany. D.J.C.K. is an investigator of the Howard Hughes Medical Institute. This is Clonal Raider Ant Project paper number 24.

**Data Availability** The behavioral datasets and raw mass spectra from this study are available in the Zenodo repository with DOI 10.5281/zenodo.7216951.

## Declarations

**Conflict of Interest** The authors have no relevant financial or non-financial interests to disclose.

**Open Access** This article is licensed under a Creative Commons Attribution 4.0 International License, which permits use, sharing, adaptation, distribution and reproduction in any medium or format, as long as you give appropriate credit to the original author(s) and the source, provide a link to the Creative Commons licence, and indicate if changes were made. The images or other third party material in this article are included in the article's Creative Commons licence, unless indicated otherwise in a credit line to the material. If material is not included in the article's Creative Commons licence and your intended use is not permitted by statutory regulation or exceeds the permitted use, you will need to obtain permission directly from the copyright holder. To view a copy of this licence, visit <http://creativecommons.org/licenses/by/4.0/>.

## References

- Amoore JE, Palmieri G, Wanke E, Blum MS (1969) Ant alarm pheromone activity: correlation with molecular shape by scanning computer. *Science* 165:1266–1269. <https://doi.org/10.1126/science.165.3899.1266>
- Bento JMS, Lucia TMCD, Nascimento RRD et al (2007) Response of workers of *Atta sexdens rubropilosa* (Hymenoptera: Formicidae) to mandibular gland compounds of virgin males and females. *Physiol Entomol* 32:283–286. <https://doi.org/10.1111/j.1365-3032.2007.00570.x>
- Blum MS (1969) Alarm pheromones. *Annu Rev Entomol* 14:57–80. <https://doi.org/10.1146/annurev.en.14.010169.000421>
- Bradshaw JWS, Howse PE, Ker R (1975) Multicomponent alarm pheromones of the weaver ant. *Nature* 258:230–231. <https://doi.org/10.1038/258230a0>
- Bradshaw JWS, Baker R, Howse PE (1979) Multicomponent alarm pheromones in the mandibular glands of major workers of the African weaver ant, *Oecophylla longinoda*. *Physiol Entomol* 4:15–25. <https://doi.org/10.1111/j.1365-3032.1979.tb00173.x>
- Brückner A, Hoenle PO, von Beeren C (2018) Comparative chemical analysis of army ant mandibular gland volatiles (Formicidae: Dorylinae). *PeerJ* 6:e5319. <https://doi.org/10.7717/peerj.5319>
- Chandra V, Gal A, Kronauer DJC (2021) Colony expansions underlie the evolution of army ant mass raiding. *Proc National Acad Sci* 118:e2026534118. <https://doi.org/10.1073/pnas.2026534118>
- Einterz RM, Ponder JW, Lenox RS (1977) Synthesis of 4-methyl-3-heptanol and 4-methyl-3-heptanone. Two easily synthesized insect pheromones. *J Chem Educ* 54:382. <https://doi.org/10.1021/ed054p382>
- Fujiwara-Tsujii N, Yamagata N, Takeda T et al (2006) Behavioral responses to the alarm pheromone of the ant *Camponotus obscuripes* (Hymenoptera: Formicidae). *Zool Sci* 23:353–358. <https://doi.org/10.2108/zsj.23.353>
- Han S, Chen W, Elgar MA (2022) An ambiguous function of an alarm pheromone in the collective displays of the Australian meat ant, *Iridomyrmex purpureus*. *Ethology* 128:70–76. <https://doi.org/10.1111/eth.13241>
- Hernández JV, Cabrera A, Jaffe K (1999) Mandibular gland secretion in different castes of the leaf-cutter ant *Atta laevigata*. *J Chem Ecol* 25:2433–2444. <https://doi.org/10.1023/a:1020813905989>
- Hölldobler B (1995) The chemistry of social regulation: multicomponent signals in ant societies. *Proc National Acad Sci* 92:19–22. <https://doi.org/10.1073/pnas.92.1.19>
- Hölldobler B, Wilson EO (1990) The ants. 227–297. [https://doi.org/10.1007/978-3-662-10306-7\\_7](https://doi.org/10.1007/978-3-662-10306-7_7)
- Hollén LL, Radford AN (2009) The development of alarm call behaviour in mammals and birds. *Anim Behav* 78:791–800. <https://doi.org/10.1016/j.anbehav.2009.07.021>
- Kronauer DJC, Pierce NE, Keller L (2012) Asexual reproduction in introduced and native populations of the ant *Cerapachys biroi*. *Mol Ecol* 21:5221–5235. <https://doi.org/10.1111/mec.12041>
- Longhurst C, Baker R, Howse PE (1980) A multicomponent mandibular gland secretion in the ponerine ant *Bothroponera soror* (Emery). *J Insect Physiol* 26:551–555. [https://doi.org/10.1016/0022-1910\(80\)90130-4](https://doi.org/10.1016/0022-1910(80)90130-4)
- McGurk DJ, Frost J, Eisenbraun EJ et al (1966) Volatile compounds in ants: Identification of 4-methyl-3-heptanone from *Pogonomyrmex* ants. *J Insect Physiol* 12:1435–1441. [https://doi.org/10.1016/0022-1910\(66\)90157-0](https://doi.org/10.1016/0022-1910(66)90157-0)
- Mori K (2007) Significance of chirality in pheromone science. *Bioorgan Med Chem* 15:7505–7523. <https://doi.org/10.1016/j.bmc.2007.08.040>
- Moser JC, Brownlee RC, Silverstein R (1968) Alarm pheromones of the ant *Atta texana*. *J Insect Physiol* 14:529–535. [https://doi.org/10.1016/0022-1910\(68\)90068-1](https://doi.org/10.1016/0022-1910(68)90068-1)
- Pasteels JM, Verhaeghe JC, Ottinger R et al (1981) Absolute configuration of (3R,4S)-4-methyl-3-hexanol—A pheromone from the head of the ant *Tetramorium impurum foerster*. *Insect Biochem* 11:675–678. [https://doi.org/10.1016/0020-1790\(81\)90057-3](https://doi.org/10.1016/0020-1790(81)90057-3)
- Pokorny T, Sieber L-M, Hofferberth JE et al (2020) Age-dependent release of and response to alarm pheromone in a ponerine ant. *J Exp Biol* 223:6 jeb.218040. <https://doi.org/10.1242/jeb.218040>
- Ravary F, Jaisson P (2004) Absence of individual sterility in thelytokous colonies of the ant *Cerapachys biroi* Forel (Formicidae,

- Cerapachyinae). *Insect Soc* 51:67–73. <https://doi.org/10.1007/s00040-003-0724-y>
- Riley RG, Silverstein RM (1974) Synthesis of S-(+)-4-methyl-3-heptanone, the principal alarm pheromone of *Atta texana*, and its enantiomer. *Tetrahedron* 30:1171–1174. [https://doi.org/10.1016/s0040-4020\(01\)97286-2](https://doi.org/10.1016/s0040-4020(01)97286-2)
- Riley RG, Silverstein RM, Moser JC (1974) Isolation, identification, synthesis and biological activity of volatile compounds from the heads of *Atta* ants. *J Insect Physiol* 20:1629–1637. [https://doi.org/10.1016/0022-1910\(74\)90092-4](https://doi.org/10.1016/0022-1910(74)90092-4)
- Trible W, Olivos-Cisneros L, McKenzie SK et al (2017) orco mutagenesis causes loss of antennal lobe glomeruli and impaired social behavior in ants. *Cell* 170:727–735.e10. <https://doi.org/10.1016/j.cell.2017.07.001>
- Vander Meer RK, Alonso LE (1998) Pheromone directed behavior in ants. Westview Press, pp 159–192
- Wilson EO (1958) A chemical releaser of alarm and digging behavior in the ant *Pogonomyrmex badius* (Latreille). *Psyche J Entomol* 65:41–51. <https://doi.org/10.1155/1958/57483>
- Wood WF, Hoang T-T, McGlynn TP (2011) Volatile components from the mandibular glands of the turtle ants, *Cephalotes alfaroi* and *Cephalotes cristatus*. *Biochem Syst Ecol* 39:135–138. <https://doi.org/10.1016/j.bse.2011.01.013>
- Zada A, Ben-Yehuda S, Dunkelblum E et al (2004) Synthesis and biological activity of the four stereoisomers of 4-Methyl-3-Heptanol: main component of the aggregation pheromone of *Scolytus amygdali*. *J Chem Ecol* 30:631–641. <https://doi.org/10.1023/b:joec.0000018634.94866.5b>