

# Scavenging of H<sub>2</sub>O<sub>2</sub> by mouse brain mitochondria

Anatoly A. Starkov · Alexander Yu Andreyev · Steven F. Zhang ·  
Natalia N. Starkova · Maria Korneeva · Mikhail Syromyatnikov ·  
Vasily N. Popov

Received: 24 July 2014 / Accepted: 14 September 2014 / Published online: 24 September 2014  
© Springer Science+Business Media New York 2014

**Abstract** Mitochondrial reactive oxygen species (ROS) metabolism is unique in that mitochondria both generate and scavenge ROS. Recent estimates of ROS scavenging capacity of brain mitochondria are surprisingly high, ca. 9–12 nmol H<sub>2</sub>O<sub>2</sub>/min/mg, which is ~100 times higher than the rate of ROS generation. This raises a question whether brain mitochondria are a source or a sink of ROS. We studied the interaction between ROS generation and scavenging in mouse brain mitochondria by measuring the rate of removal of H<sub>2</sub>O<sub>2</sub> added at a concentration of 0.4 μM, which is close to the reported physiological H<sub>2</sub>O<sub>2</sub> concentrations in tissues, under conditions of low and high levels of mitochondrial H<sub>2</sub>O<sub>2</sub> generation. With NAD-linked substrates, the rate of H<sub>2</sub>O<sub>2</sub> generation by mitochondria was ~50–70 pmol/min/mg. The H<sub>2</sub>O<sub>2</sub> scavenging dynamics was best approximated by the first order reaction equation. H<sub>2</sub>O<sub>2</sub> scavenging was not affected by the uncoupling of mitochondria, phosphorylation of added ADP, or the genetic ablation of glutathione peroxidase 1, but decreased in the absence of respiratory substrates, in the presence of thioredoxin reductase inhibitor auranofin, or in partially disrupted mitochondria. With succinate, the rate of H<sub>2</sub>O<sub>2</sub> generation was ~2,200–2,900 pmol/min/mg; the scavenging of added H<sub>2</sub>O<sub>2</sub> was masked by a significant accumulation of generated H<sub>2</sub>O<sub>2</sub> in the assay medium. The obtained

data were fitted into a simple model that reasonably well described the interaction between H<sub>2</sub>O<sub>2</sub> scavenging and production. It showed that mitochondria are neither a sink nor a source of H<sub>2</sub>O<sub>2</sub>, but can function as both at the same time, efficiently stabilizing exogenous H<sub>2</sub>O<sub>2</sub> concentration at a level directly proportional to the ratio of the H<sub>2</sub>O<sub>2</sub> generation rate to the rate constant of the first order scavenging reaction.

**Keywords** Reactive oxygen species · Oxidative stress · Hydrogen peroxide · ROS production · ROS removal

## Introduction

The metabolism of reactive oxygen species (ROS) has been robustly documented to be abnormal in many neurodegenerative diseases, but the underlying mechanism is still unknown. Specifically, more data are needed to elucidate to which extents these abnormalities result from elevated ROS production or from a failure to scavenge ROS generated elsewhere. Whereas the sites of ROS generation in mitochondria are well known and the regulation of ROS production by the metabolic state of mitochondria is reasonably well understood (reviewed in (Andreyev et al. 2005; Starkov 2008), mitochondrial ROS scavenging remains, to a large extent, enigmatic. The enzyme composition of mitochondrial ROS scavenging system is known, its dependence on the NADPH and glutathione is well documented (Andreyev et al. 2005; Starkov 2008), but the capacity of this system and its interaction with ROS generation needs to be clarified. Two studies (Zoccarato et al. 2004; Drechsel and Patel 2010) provided new and important information about mitochondrial ROS scavenging system. The earlier study (Zoccarato et al. 2004) demonstrated that rat brain mitochondria can remove exogenously added H<sub>2</sub>O<sub>2</sub> at high rates of ~0.3 – 6.7 nmol/min/mg mitochondria protein, depending on the metabolic state of mitochondria and the nature

A. A. Starkov (✉) · N. N. Starkova  
Brain and Mind Research Institute, Weill Cornell Medical College,  
407 East 61st Street, 5th floor, New York, NY 10065, USA  
e-mail: ans2024@med.cornell.edu

A. Y. Andreyev  
University of California, San Diego, USA

S. F. Zhang  
Weill Cornell Medical College, New York, NY 10021, USA

M. Korneeva · M. Syromyatnikov · V. N. Popov  
Voronezh State University, Voronezh, Russia

of oxidative substrates. The highest rate of  $\text{H}_2\text{O}_2$  removal (6.7 nmol/min/mg) was observed in mitochondria energized by NAD-linked substrates glutamate and malate. According to this study, mitochondrial glutathione reductase and glutathione peroxidase (GPx1) are the major players in removing exogenous  $\text{H}_2\text{O}_2$  (Zoccarato et al. 2004). However, more recent study have challenged the importance of these two enzymes in  $\text{H}_2\text{O}_2$  scavenging, placing the emphasis on mitochondrial ‘oxin enzymes (peroxiredoxins, thioredoxin, thioredoxin reductase) (Drechsel and Patel 2010). The authors have also reported very high rates of  $\text{H}_2\text{O}_2$  scavenging by brain mitochondria, ca. 9–12 nmol  $\text{H}_2\text{O}_2$ /min/mg, which is ~100 times higher than the highest rate of ROS generation by brain mitochondria oxidizing NAD-linked (physiological) substrates (~0.06–0.1 nmol/min/mg, (Starkov 2008)). This creates a conundrum and raises a question whether brain mitochondria are, actually, a source, or a *bona fide* sink of ROS.

The rate of  $\text{H}_2\text{O}_2$  removal in (Zoccarato et al. 2004) was measured by following the disappearance of a rather high amount of added  $\text{H}_2\text{O}_2$  bolus (8 nmol in 1.6 ml, 5  $\mu\text{M}$   $\text{H}_2\text{O}_2$  concentration). The rate of  $\text{H}_2\text{O}_2$  removal in (Drechsel and Patel 2010) was measured by another method, but the pulse of  $\text{H}_2\text{O}_2$  was also quite high (~3  $\mu\text{M}$ , 3 nmol/ml). Although the highest reported level of  $\text{H}_2\text{O}_2$  in brain stands as ~100  $\mu\text{M}$  (Hyslop et al. 1995), conservative estimates of the steady-state levels of  $\text{H}_2\text{O}_2$  in naive rat brain yielded much lower values, ~0.008  $\mu\text{M}$  of  $\text{H}_2\text{O}_2$  (Yusa et al. 1987), whereas typical steady-state  $\text{H}_2\text{O}_2$  concentrations in other tissues and cell cultures are within the 0.01–0.1  $\mu\text{M}$  range (Chance et al. 1979; Boveris and Cadenas 1997). In this study, we wanted to assess the properties of mitochondrial  $\text{H}_2\text{O}_2$  scavenging system at  $\text{H}_2\text{O}_2$  concentrations close to these low physiological ones. While most of the data obtained in our study are in a very good agreement with the results published by Patel’s group (Drechsel and Patel 2010), we think that the novel findings reported in this manuscript clarify the issue of “whether mitochondria are a source or a sink of ROS” question by demonstrating its irrelevance.

## Materials and methods

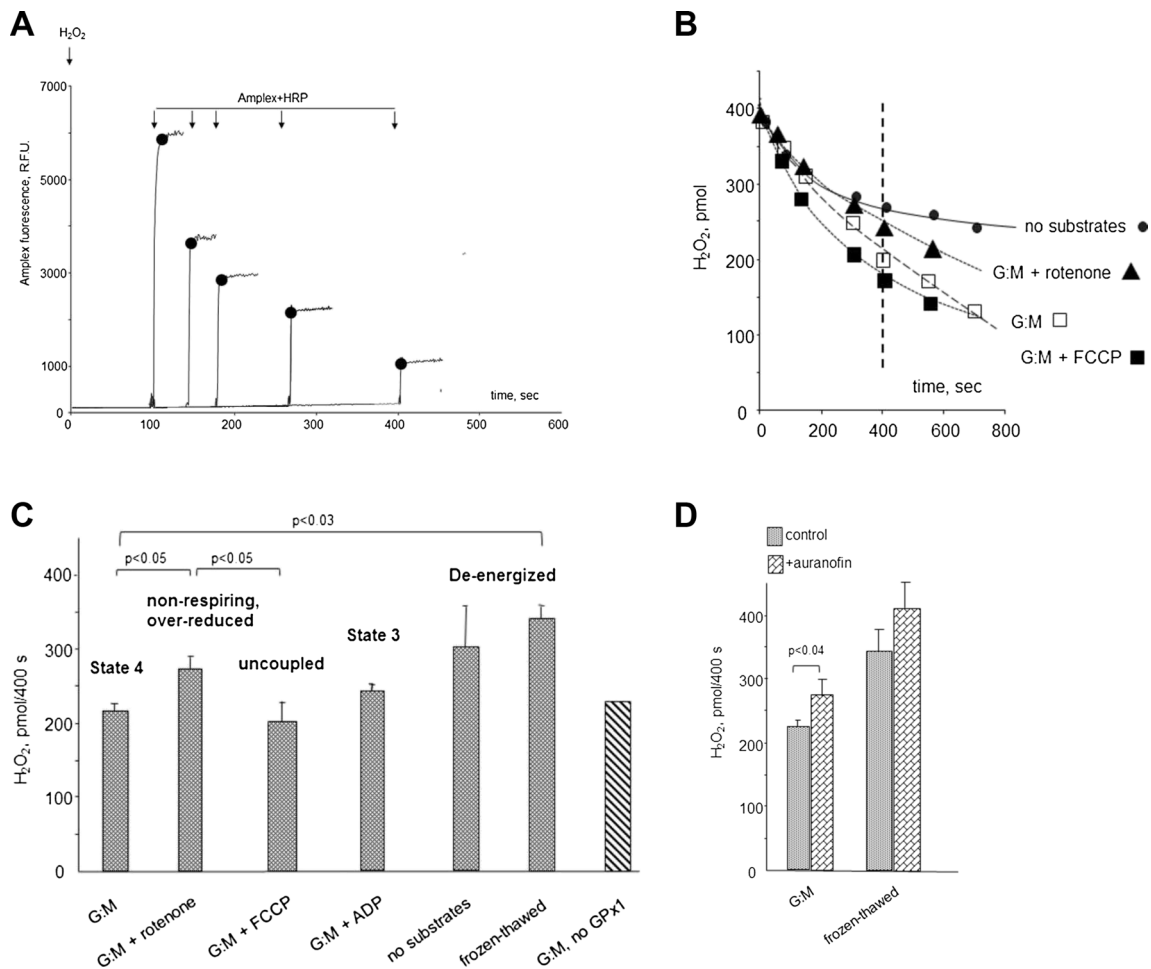
The experiments were carried out in compliance with the National Institute of Health guide for the care and use of laboratory animals and were approved by the Institutional Animal Care and Use Committee of Cornell University. All efforts were made to minimize animal suffering and to reduce the number of animals used.

*Mouse brain mitochondria were isolated* by the Percoll gradient method as described (Sims 1990) with minor modifications. Animals were decapitated; the brains were excised and placed into ice-cold isolation buffer containing 225 mM mannitol, 75 mM sucrose, 20 mM HEPES-KOH (pH 7.4), 1 mM EGTA, and 0.5 g/l fatty acid-free bovine serum albumin

(BSA). The cerebellum was removed, and the rest of the brain tissue was placed in a 15 ml Dounce homogenizer and homogenized manually with 20 strokes of tight-fitting pestle (“pestle A”). The brain homogenate was centrifuged at  $1,250 \times g$  for 5 min; the pellet was discarded and the supernatant was centrifuged at  $14,000 \times g$  for 10 min. The pellet was resuspended in 12 % Percoll (Sigma, St Louis, MO, USA) and layered on a preformed Percoll gradient (40 % and 23 %). Following centrifugation at  $31,000 \times g$  for 10 min, the mitochondrial fraction located at the interface of the 40 and 23 % Percoll layers was collected, diluted with the isolation buffer, and centrifuged at  $14,000 \times g$  for 10 min. The supernatant was discarded, and the loose pellet was resuspended in the isolation buffer and centrifuged at  $12,000 \times g$  for 10 min. The resulting pellet was resuspended in 100  $\mu\text{l}$  of the isolation medium and stored on ice during the experiment.

*The rate of  $\text{H}_2\text{O}_2$  emission from mitochondria* was estimated by a fluorescence assay with Hitachi 7,000 (“Hitachi High-Tech”, Japan) spectrofluorimeter (excitation, 555 nm; emission, 581 nm) as described earlier (Starkov and Fiskum 2003). Briefly, mitochondria (0.01–0.04 mg/ml) were placed in a magnetically stirred cuvette with 1 ml of respiratory assay buffer (125 mM KCl, 4 mM  $\text{K}_2\text{HPO}_4$ , 20 mM HEPES-KOH (pH 7.2), 0.2 mg/ml of BSA, 1 mM EGTA) containing respiratory substrates (either 5 mM glutamate+2 mM malate, or 5 mM succinate), 10  $\mu\text{M}$  Amplex<sup>®</sup> Ultrared (“Life Technologies”, Grand Island, NY, USA), 4 U/ml of horse radish peroxidase (HRP), and 20 U/ml of Cu, Zn superoxide dismutase. The calibration curve was obtained by adding 100 pmol aliquots of freshly made  $\text{H}_2\text{O}_2$  to the cuvette containing the respiratory assay buffer, Amplex<sup>®</sup> Ultrared, and HRP.

*To measure  $\text{H}_2\text{O}_2$  scavenging or accumulation* mitochondria were added at a 0.01–0.04 mg/ml concentration to 7 ml of the incubation buffer in a thermostated ( $t=37^\circ\text{C}$ ) stirred glass chamber protected from light. The incubation buffer contained 125 mM KCl, 4 mM  $\text{K}_2\text{HPO}_4$ , 20 mM HEPES-KOH (pH 7.2), 0.2 mg/ml of BSA, 1 mM EGTA, with or without respiratory substrates and other additions, as indicated in the legends to Figs. 1 and 2. For the  $\text{H}_2\text{O}_2$  scavenging assay, mitochondria were incubated for 300 s; then a single bolus of 400 pmol/ml  $\text{H}_2\text{O}_2$  was added. After incubating mitochondria for a 50–200 s with  $\text{H}_2\text{O}_2$ , 0.9 ml aliquot of the mitochondria suspension was withdrawn and transferred into the spectrofluorimeter cuvette containing the stirring bar and 100  $\mu\text{l}$  of the same incubation buffer supplemented with Amplex<sup>®</sup> Ultrared, HRP, and Cu, Zn superoxide dismutase, and fluorescence was recorded immediately. The procedure was repeated until 5–6 different time data points were obtained. A typical recording illustrating this procedure is presented in Fig. 1a. The procedure to measure  $\text{H}_2\text{O}_2$  accumulation in the mitochondria suspension was similar except no  $\text{H}_2\text{O}_2$  was added (Fig. 2a).



**Fig. 1**  $H_2O_2$  scavenging by mouse brain mitochondria oxidizing glutamate and malate. **A**, a typical experiment to estimate ROS scavenging capacity (see “Methods”). *Black circles* indicate the data points (the  $H_2O_2$  amount that remained in the mitochondria suspension at the indicated time) used to construct a graph presented on panel B. Mitochondria were added at -300 sec (“Methods”) to the  $H_2O_2$  addition time point. **B**,  $H_2O_2$  scavenging dynamics under various conditions. The point at “0 sec” was obtained by adding  $H_2O_2$  to the assay medium in the absence of mitochondria. The dashed line indicates the time point used to estimate the remaining  $H_2O_2$  in panels C and D. **C**, the effect of various metabolic conditions on the  $H_2O_2$  scavenging. The levels of  $H_2O_2$  remaining in the suspension after 400 s incubation are shown. **D**, the effect of

mitochondria structural integrity and thioredoxin reductase inhibition on the ROS scavenging capacity of mitochondria. Additions: rotenone was added at 1  $\mu$ M, ADP at 1 mM, FCCCP at 120 nM. Abbreviations: G:M, 5 mM glutamate and 2 mM malate were added as the respiratory substrates; “State 3”, the incubation medium was supplemented with 1 mM ADP; “no GPx1”, mitochondria were isolated from brains of mice with genetically ablated glutathione peroxidase 1; “frozen-thawed”, mitochondria were frozen and thawed to disrupt their structural integrity and incubated in the absence of added oxidative substrates. The number of experiments was  $n=8$  (“G:M” and “G:M + rotenone”) and  $n=4$  for all other conditions except “G:M, no GPx1” ( $n=2$ )

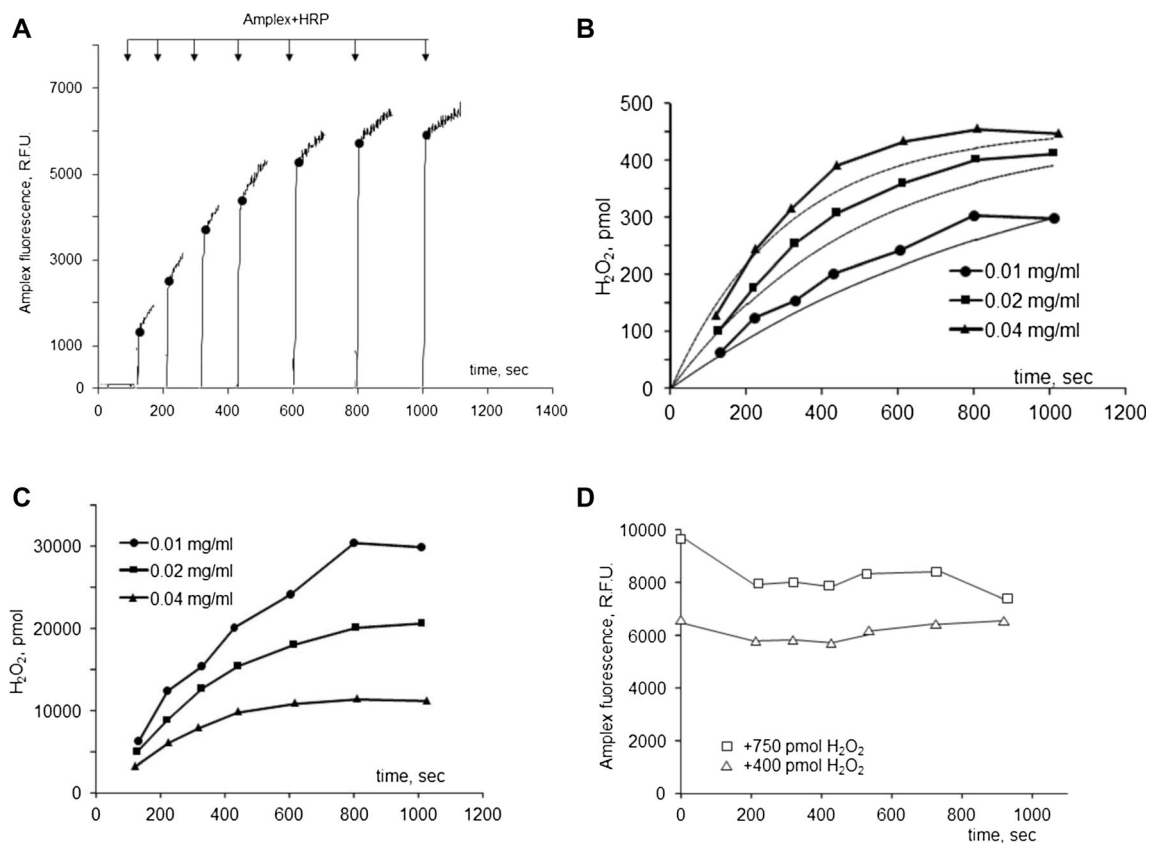
*Immunoblotting for catalase in isolated brain mitochondria*  
 To determine the amount of catalase present in mitochondria, we loaded 2.5, 6.25, 12.5, 18.75, 25 ng of catalase (“Sigma”, USA, cat. # C40) and 60–200 microgram of isolated mouse brain mitochondria in 4–20 % gel. Protein were resolved by SDS-PAGE, transferred onto PVDF membrane and stained with monoclonal anti-catalase antibody (C0979, Sigma). Membranes were then incubated with HRP-conjugated secondary antibody (Jackson ImmunoResearch) and visualized using SuperSignal West Pico Chemiluminescent Substrate (Thermo). The amount of protein was quantified with ImageJ software (NIH, USA); catalase samples were used to

build the calibration curve. The amount of catalase in brain mitochondria was determined using this calibration curve.

Statistical analysis (*t*-test with non-parametric homoscedastic distribution settings) was performed with the help of Excel software Statistical Analysis package (Microsoft Office 2010, Microsoft, USA).

**Results**

*H<sub>2</sub>O<sub>2</sub> scavenging at low rates of H<sub>2</sub>O<sub>2</sub> generation by mitochondria*  
 To avoid the interference from mitochondria-



**Fig. 2**  $\text{H}_2\text{O}_2$  accumulation and scavenging by mouse brain mitochondria oxidizing succinate. **A**, typical experiment to estimate ROS accumulation in the medium containing mitochondria oxidizing succinate (see “Methods”). *Black circles* indicate the data points (the  $\text{H}_2\text{O}_2$  amount that was accumulated in the mitochondria suspension at the indicated time) used to construct the graphs presented on panels **B** and **C**. **B**, the  $\text{H}_2\text{O}_2$  accumulation dynamics at different concentrations of mitochondria

protein. *Dashed lines* indicate the dynamics of  $\text{H}_2\text{O}_2$  accumulation calculated by the Eq. 3 (see the text). **C**, the data from **B** after normalizing the amount of  $\text{H}_2\text{O}_2$  by the protein content in the assay. **D**, typical  $\text{H}_2\text{O}_2$  scavenging dynamics with succinate-oxidizing mitochondria. White triangles and squares indicate the amount of  $\text{H}_2\text{O}_2$  remaining in the assay medium at the indicated time points. The points at “0 sec” were obtained by adding  $\text{H}_2\text{O}_2$  to the assay medium in the absence of mitochondria

generated  $\text{H}_2\text{O}_2$ , we used experimental conditions that provided very low generation of  $\text{H}_2\text{O}_2$ . Mitochondria fueled by glutamate and malate in the absence of other additions were generating  $\text{H}_2\text{O}_2$  at a rate of  $75 \pm 10$  pmol/min/mg that was steady over 1,200 s of the recording time. In the presence of rotenone, mitochondria generated  $\text{H}_2\text{O}_2$  at a rate of  $190 \pm 20$  pmol/min/mg. Both observed rates were within the earlier reported range for brain mitochondria oxidizing NAD-linked substrates (Andreyev et al. 2005). Therefore, even in a complete absence of any scavenging, under our conditions (mitochondria concentration, 0.01 mg protein/ml), mitochondria could not have generated more than 15 or 38 pmol (in the absence or presence of rotenone, respectively) of  $\text{H}_2\text{O}_2$  within 20 min of the assay duration. These amounts are considerably lower (~4 and 10 %) than the amount of  $\text{H}_2\text{O}_2$  (400 pmol/ml) added to the mitochondria to study  $\text{H}_2\text{O}_2$  scavenging dynamics. Figure 1A illustrates the procedure of measuring the scavenging of  $\text{H}_2\text{O}_2$ . The influence of the mitochondrial functional state on the  $\text{H}_2\text{O}_2$  scavenging was assessed by imposing several well-defined experimental conditions: the “resting state (State 4)” (glutamate+malate, no other additions),

“permanent phosphorylation state (State 3)” (1 mM ADP was added), “complete uncoupling” (120 nM FCCP was added), “de-energized” (no glutamate and malate was added), and “no structural integrity” (mitochondria were frozen and thawed two times, washed by diluting to 0.5 mg/ml in the incubation buffer without substrates, centrifuged at  $10,000 \text{ g} \times 10$  min and re-suspended to 5 mg/ml). The typical results of  $\text{H}_2\text{O}_2$  scavenging experiment are shown in Fig. 1B. The dynamics of  $\text{H}_2\text{O}_2$  scavenging was non-linear; the best fit ( $R^2 > 0.98$ , using Microsoft Office Excel in-built “trend line” function) to these data points was obtained with an exponential function of the type (Eq. 1):

$$[\text{H}_2\text{O}_2]_{(t)} = [\text{H}_2\text{O}_2]_{(t=0)} \times e^{-kt}$$

where  $[\text{H}_2\text{O}_2]_{(t)}$  is the concentration of  $\text{H}_2\text{O}_2$  remaining in the solution at the time “t”,  $[\text{H}_2\text{O}_2]_{(t=0)}$  is the amount of  $\text{H}_2\text{O}_2$  added to the mitochondria, “t” is time, “e” is the base of the natural logarithm, and “k” is a rate constant of the  $\text{H}_2\text{O}_2$

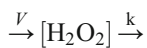
scavenging reaction. Thus, the scavenging reaction at the used  $H_2O_2$  concentration is a first order reaction and therefore its rate should not be expressed in “nmol/min/mg”, because the rate of scavenging depends on the concentration of the substrate ( $H_2O_2$ ). There was no consistent fit to the data with exponential function with frozen-thawed mitochondria. The rate constant of the scavenging reaction was estimated with glutamate + malate in the absence of other additions, it was  $0.002 \pm 0.0004$  ( $n=8$ ). For the data presented in Fig. 1C, the rate constants were within the  $1.06 \times 10^{-3} - 2.7 \times 10^{-3}$  range (except with frozen-thawed mitochondria). Since visual comparison of the rate constants is not immediately illustrative of the changes in the scavenging capacity, we have selected a time point at which approximately half of the added  $H_2O_2$  was decomposed (dashed line in Fig. 1B), which allowed us to illustrate the effects of various mitochondria metabolic conditions on the  $H_2O_2$  scavenging capacity (Fig. 1C and D). We found that de-energizing mitochondria by uncoupling or putting them in a permanent active phosphorylation state (State 3, “glutamate+malate+ADP”, Fig. 1C) did not affect their  $H_2O_2$  scavenging capacity. The absence of mitochondrial glutathione peroxidase 1 (GPx1) also did not affect the  $H_2O_2$  scavenging capacity (the GPx1 knock-out mice were generously provided by Prof. Ye-Shi Ho, Department of Biochemistry, Wayne State University, Detroit, Michigan). The scavenging capacity of mitochondria was impaired by inhibiting Complex I of the respiratory chain (which also increased the generation of  $H_2O_2$ , see above), depriving mitochondria of the respiratory substrates, or disrupting the structural integrity of mitochondria (“frozen-thawed”, Fig. 1C). Inhibiting thioredoxin reductase with auranofin also diminished the  $H_2O_2$  scavenging capacity to some extent, more so in the frozen-thawed mitochondria (Fig. 1D), although the effect was not as pronounced as reported earlier (Drechsel and Patel 2010). The absence of pronounced effects of substrates and mitochondria energization on the scavenging of  $H_2O_2$  may be explained by the presence of some energy-independent  $H_2O_2$  scavenging enzyme, such as catalase. The latter had been shown in heart and liver mitochondria, but there are no reports on the presence of catalase in brain mitochondria. We therefore have checked for catalase in isolated Percoll-purified brain mitochondria by immunostaining (see “Methods”). We have found that mouse brain mitochondria contain  $72.2 \pm 0.8$  ng catalase per mg of mitochondrial protein. This would amount to  $\sim 1.2$   $\mu$ M catalase concentration in the matrix (assuming that the matrix volume is about 1  $\mu$ l per mg of mitochondria protein, the molecular mass of catalase’s catalytically active monomer is about 60 kD, and that it is located in the matrix and not a contamination from peroxisomes co-isolated with mitochondria). Considering such low abundance and the fact that catalase inhibitor 3-amino-1,2,4-triazole had no effect on the scavenging capacity of brain mitochondria (Drechsel and Patel 2010) and results of this study, data not presented), we have decided not to pursue this any further.

*H<sub>2</sub>O<sub>2</sub> scavenging at high rates of H<sub>2</sub>O<sub>2</sub> generation by mitochondria* The experiments were performed with mitochondria oxidizing succinate in State 4. Under these conditions,  $H_2O_2$  is generated in the reaction of reverse electron transfer from succinate dehydrogenase to Complex I and to the matrix-located  $H_2O_2$  generating enzymes (e.g., alpha-ketoglutarate and pyruvate dehydrogenase complexes) (Andreyev et al. 2005). In our experiments, mitochondria fueled by succinate in the absence of other additions were generating  $H_2O_2$  at a rate of  $2,682 \pm 252$  pmol/min/mg (at 0.01 mg/ml mitochondria concentration; see the “Discussion” section). In the absence of scavenging, this should have resulted in the accumulation of  $\sim 270$  pmol of  $H_2O_2$  in the assay medium within 10 min. Indeed, we detected about that amount of  $H_2O_2$  after 10 min of incubation (Fig. 2B); but at 16 min, the accumulation was much less than would be expected. Moreover, with higher amount of mitochondrial protein (0.02 and 0.04 mg/ml), the accumulation rates were considerably lower than the expected values (Fig. 2B). Thus, the amount of accumulated  $H_2O_2$  at the mitochondria concentration of 0.04 mg/ml should have exceeded 900 pmol, but reached only 420 pmol in our experiment (Fig. 2B). This indicates a substantial rate of  $H_2O_2$  scavenging by succinate-oxidizing mitochondria, which is even more evident when the amount of accumulated  $H_2O_2$  is normalized by the added mitochondria protein (Fig. 2C; note that the highest  $H_2O_2$  accumulation per mg protein was observed with 0.01 mg of mitochondria). It is interesting that succinate-oxidizing mitochondria were apparently not efficient in scavenging of externally added  $H_2O_2$  (Fig. 2D); the scavenging was practically absent with 400 pmol/ml  $H_2O_2$  pulse and marginal with 750 pmol/ml  $H_2O_2$  pulse (Fig. 2D).

## Discussion

In general, the properties of brain mitochondria  $H_2O_2$  scavenging system observed in our experiments with NAD-linked substrates are in a very good agreement with those published by (Drechsel and Patel 2010). That is, the scavenging efficacy depends on the substrates, can be diminished by thioredoxin reductase inhibitors, and apparently does not require mitochondrial glutathione peroxidase (Fig. 1C). The effects observed were much smaller than those reported in (Drechsel and Patel 2010), most likely because under our conditions, the scavenging system was much less dependent on the energy production in mitochondria due to the relatively large pools of required co-factors and scavenging enzymes as compared to the size of the  $H_2O_2$  bolus. As was mentioned above, mitochondria contain  $\sim 2-5$  nmol/mg NAD(P)H, about the same amount of glutathione, which is in more than 90 % in the reduced state, and abundant peroxiredoxins. The

concentration of peroxiredoxin 3 in the mitochondrial matrix is estimated ca. 60  $\mu\text{M}$ , that of peroxiredoxin 5 is ca. 20  $\mu\text{M}$ , whereas the concentration of glutathione peroxidase 1 is only  $\sim 2 \mu\text{M}$  (Cox et al. 2010). The new finding in this work is that the scavenging capacity is apparently independent on the workload of mitochondria, such as oxidative phosphorylation of ADP, and that it is not affected by uncoupling of mitochondria (Fig. 1C), at least at low concentrations of  $\text{H}_2\text{O}_2$ . Another novel finding is that  $\text{H}_2\text{O}_2$  scavenging reaction can be characterized by the first order equation, which makes possible to generate a simple model linking mitochondrial  $\text{H}_2\text{O}_2$  production to scavenging, and thereby allows estimation of  $\text{H}_2\text{O}_2$  steady-state levels in mitochondria-containing environment. Mitochondria both produce and scavenge  $\text{H}_2\text{O}_2$ ; the overall reaction can be described in general terms as (Eq. 2).



where “V” is the rate of  $\text{H}_2\text{O}_2$  production (expressed in pmols  $\text{H}_2\text{O}_2/\text{s}$ ) and “k” is the scavenging reaction rate constant. Assuming that the rate of  $\text{H}_2\text{O}_2$  production by mitochondria is constant (unless their metabolic conditions change) and that, as we found, the scavenging reaction is of the first order type ( $[\text{H}_2\text{O}_2]_{(t)} = [\text{H}_2\text{O}_2]_{(t=0)} \times e^{-k \cdot t}$ ), this equation can be solved as (Eq. 3).

$$[\text{H}_2\text{O}_2]_{(t)} = \frac{V}{k} (1 - e^{-kt})$$

where  $[\text{H}_2\text{O}_2]_{(t)}$  is  $\text{H}_2\text{O}_2$  concentration (in pmol/ml) in the medium at the time t (in seconds), V is the rate of  $\text{H}_2\text{O}_2$  production, and k is the scavenging reaction rate constant. At  $t \rightarrow \infty$  (at the “steady state”), the equation is transformed to  $[\text{H}_2\text{O}_2]_{(t)} = \frac{V}{k}$ . This allows us to find the scavenging rate constant from the data presented in Fig. 2B. Assuming that  $\text{H}_2\text{O}_2$  accumulation has reached the steady state at 800 sec (mitochondrial concentration, 0.04 mg/ml;  $\text{H}_2\text{O}_2$  amount at 800 s was 455 pmol; Fig. 2B), and using the rates of  $\text{H}_2\text{O}_2$  production measured in the representative experiments shown in Fig. 2B (2,916 pmol/min/mg with 0.01 mg/ml, 2,706 with 0.02 mg/ml, and 2,262 with 0.04 mg/ml mitochondria), the scavenging rate constants for 0.01, 0.02, and 0.04 mg/ml mitochondria concentrations were  $1.07 \times 10^{-3}$ ,  $1.98 \times 10^{-3}$ , and  $3.32 \times 10^{-3}$ , correspondingly. Using these numbers and the equation 3, we calculated the dynamics of  $\text{H}_2\text{O}_2$  accumulation (dashed lines in Fig. 2B). In our opinion, the correlation between the calculated and measured values is sufficiently good to prove that our model is correct in general. It explains why succinate-oxidizing mitochondria were apparently less efficient in scavenging

of the added  $\text{H}_2\text{O}_2$  bolus (Fig. 2D) than mitochondria oxidizing NAD-linked substrates (Fig. 1): the  $\text{H}_2\text{O}_2$  accumulation resulting from mitochondrial  $\text{H}_2\text{O}_2$  generation was much higher with succinate than with glutamate+malate. To this end, it should be noted that upon succinate oxidation, the scavenging system is most likely receiving an adequate supply of reduced pyridine nucleotides for normal functioning, because higher levels of NAD(P)H were found in mitochondria energized with succinate compared with complex I substrates (c.f. from Adam-Vizi and Chinopoulos (2006)).

Overall, the data demonstrate that mitochondria stabilize  $\text{H}_2\text{O}_2$  steady-state concentration in the surrounding medium (e.g., in cell cytosol) at the level determined by the V/k ratio. Mitochondria are a source of  $\text{H}_2\text{O}_2$  when the  $\text{H}_2\text{O}_2$  concentration is below that steady state level, or they are *bona fide* sink of  $\text{H}_2\text{O}_2$  when  $\text{H}_2\text{O}_2$  concentration exceeds that level, efficiently dampening the pulses of exogenously produced  $\text{H}_2\text{O}_2$ . In turn, the V/k ratio would be determined by the abundance of mitochondrial antioxidant enzymes (the “k” value) and metabolic conditions, such as the nature of substrates and the workload of mitochondria, as these conditions affect the rate of mitochondrial  $\text{H}_2\text{O}_2$  generation (the “V”). Thus, mitochondria are capable of adjusting the steady-state level of  $\text{H}_2\text{O}_2$  according to current cellular conditions, such as mitochondria abundance, changes in the intracellular metabolic demands, chemical nature and availability of oxidative substrates, and external ROS “pressure”. Thereby, mitochondria serve as a “ROS-stabilizing device” in the cellular ROS signaling network, as we have proposed earlier (Starkov 2008).

**Acknowledgment** This work was supported by the National Institutes of Health/National Institute on Aging grant PO AG 14930 to A.A.S., and in part by the grants from Ministry of Education and Science of Russian Federation (State assessment number 149.2014/K) and the Russian Scientific Fund (number 14-14-00181) to V. N.P. and Russian Fund for Basic Research grant 14-04-316118 to M.S.

**Disclosures** No conflicts of interest, financial or otherwise, are declared by the authors.

## References

- Adam-Vizi V, Chinopoulos C (2006) Bioenergetics and the formation of mitochondrial reactive oxygen species. *Trends Pharmacol Sci* 27(12):639–645. doi:10.1016/j.tips.2006.10.005
- Andreyev AY, Kushnareva YE, Starkov AA (2005) Mitochondrial metabolism of reactive oxygen species. *Biochemistry (Mosc)* 70(2): 200–214
- Boveris A, Cadenas E (1997) Cellular sources and steady-state levels of reactive oxygen species. In: Clerch LB, Massaro DJ (eds) *Oxygen, gene expression and cellular function*. Marcel Dekker, New York, pp 1–25

- Chance B, Sies H, Boveris A (1979) Hydroperoxide metabolism in mammalian organs. *Physiol Rev* 59(3):527–605
- Cox AG, Winterbourn CC, Hampton MB (2010) Mitochondrial peroxiredoxin involvement in antioxidant defence and redox signalling. *Biochem J* 425(2):313–325. doi:10.1042/BJ20091541
- Drechsel DA, Patel M (2010) Respiration-dependent H<sub>2</sub>O<sub>2</sub> removal in brain mitochondria via the thioredoxin/peroxiredoxin system. *J Biol Chem* 285(36):27850–27858. doi:10.1074/jbc.M110.101196
- Hyslop PA, Zhang Z, Pearson DV, Phebus LA (1995) Measurement of striatal H<sub>2</sub>O<sub>2</sub> by microdialysis following global forebrain ischemia and reperfusion in the rat: correlation with the cytotoxic potential of H<sub>2</sub>O<sub>2</sub> in vitro. *Brain Res* 671(2):181–186
- Sims NR (1990) Rapid isolation of metabolically active mitochondria from rat brain and subregions using Percoll density gradient centrifugation. *J Neurochem* 55(2):698–707
- Starkov AA (2008) The role of mitochondria in reactive oxygen species metabolism and signaling. *Ann N Y Acad Sci* 1147:37–52. doi:10.1196/annals.1427.015
- Starkov AA, Fiskum G (2003) Regulation of brain mitochondrial H<sub>2</sub>O<sub>2</sub> production by membrane potential and NAD (P) H redox state. *J Neurochem* 86(5):1101–1107
- Yusa T, Beckman JS, Crapo JD, Freeman BA (1987) Hyperoxia increases H<sub>2</sub>O<sub>2</sub> production by brain in vivo. *J Appl Physiol* 63(1):353–358
- Zoccarato F, Cavallini L, Alexandre A (2004) Respiration-dependent removal of exogenous H<sub>2</sub>O<sub>2</sub> in brain mitochondria: inhibition by Ca<sup>2+</sup>. *J Biol Chem* 279(6):4166–4174