




Correction to: On the morphology of grain boundary discontinuous reactions and phase identification in an advanced Cr–Fe–Ni alloy

J. C. Spadotto^{1,2,*} , M. G. Burke², and I. G. Solórzano¹

¹Department of Chemical and Materials Engineering, PUC-Rio, Rio de Janeiro 22451-900, Brazil

²Materials Performance Centre, School of Materials, The University of Manchester, Oxford Road, Manchester M13 9PL, UK

Published online:

11 May 2020

© Springer Science+Business Media, LLC, part of Springer Nature 2020

Correction to:

J Mater Sci

<https://doi.org/10.1007/s10853-020-04690-8>

In the original article, Fig. 15 is incorrect. The correct version of the figure is presented below.

The original article can be found online at <https://doi.org/10.1007/s10853-020-04690-8>.

Address correspondence to E-mail: julio spadotto@gmail.com

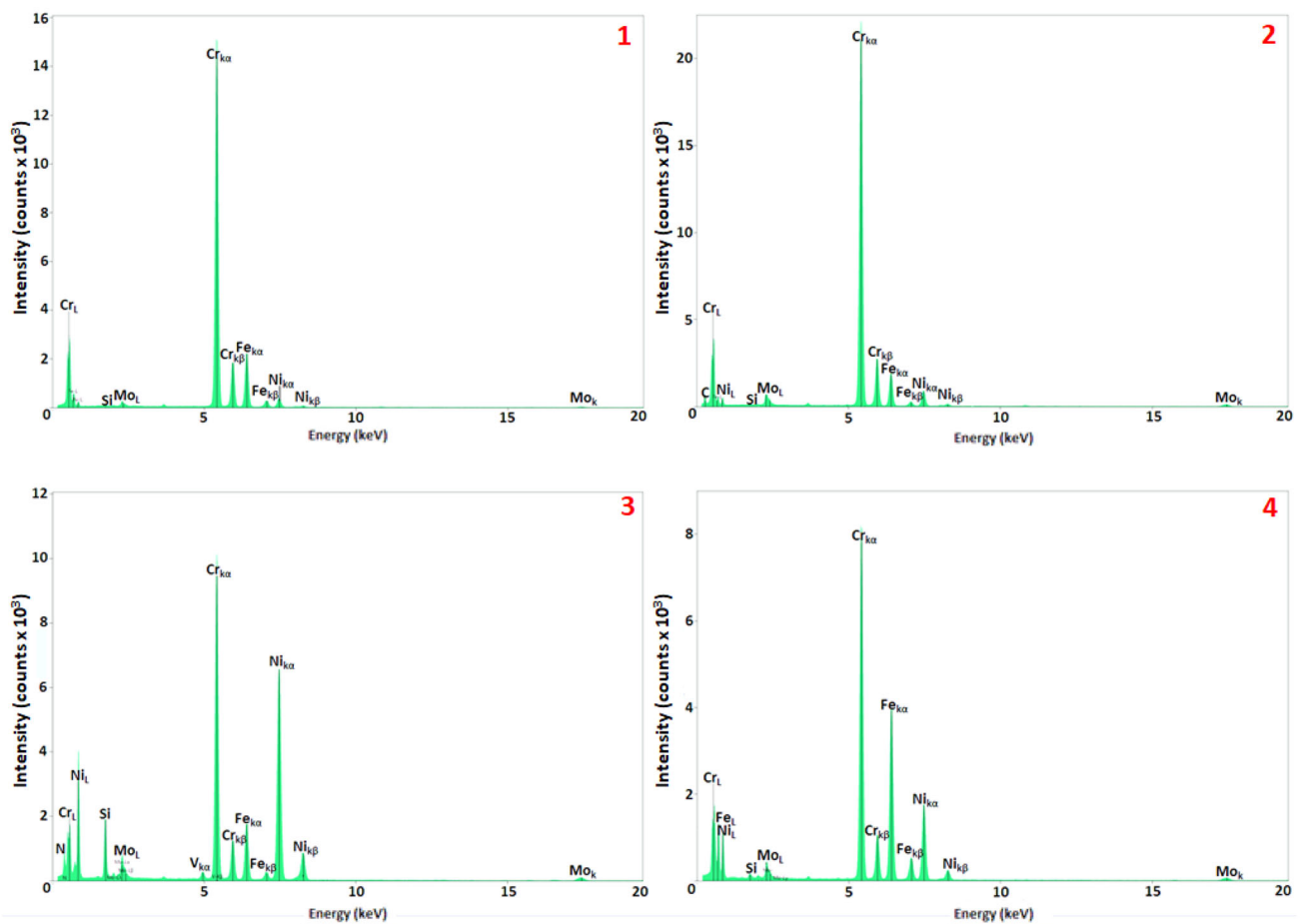


Fig. 15 XED spectra obtained from the precipitates labelled 1, 2, 3, and 4 in Fig. 11. **1** α -Cr phase (BCC structure); **2** $M_{23}C_6$ (FCC structure); **3** Si-enriched precipitate; **4** σ -phase (tetragonal structure).

Publisher's Note Springer Nature remains neutral with regard to jurisdictional claims in published maps and institutional affiliations.