



Correction to: Complete plastid genome of *Kappaphycus alvarezii*: insights of large-scale rearrangements among Florideophyceae plastid genomes

Na Liu^{1,2,3} · Lei Zhang¹ · Xianming Tang⁴ · Xumin Wang⁵ · Maria Dyah Nur Meinita^{6,7} · Guoliang Wang⁵ · Weizhou Chen⁸ · Tao Liu¹

Published online: 4 November 2019
© Springer Nature B.V. 2019

Correction to: Journal of Applied Phycology
<https://doi.org/10.1007/s10811-019-01815-8>

The original version of this article unfortunately contained a mistake. An asterisk was missing in Fig. 4. The correct image of Fig. 4 is now shown here:

The online version of the original article can be found at <https://doi.org/10.1007/s10811-019-01815-8>

✉ Tao Liu
liutao@ouc.edu.cn

- ¹ College of Marine Life Sciences, Ocean University of China, Qingdao 266100, China
- ² College of Life Sciences, Beijing Normal University, Beijing 100875, China
- ³ National Institute of Biological Sciences, Beijing, Beijing 102206, China
- ⁴ Hainan Academy of Ocean and Fisheries Sciences, Haikou 570203, China

- ⁵ CAS Key Laboratory of Genome Sciences and Information, Beijing Key Laboratory of Genome and Precision Medicine Technologies, Beijing Institute of Genomics, Chinese Academy of Sciences, Beijing 100101, China
- ⁶ Center for Maritime Biosciences Studies, Institute for Research and Community Service, Jenderal Soedirman University, Purwokerto 999006, Indonesia
- ⁷ Faculty of Fisheries and Marine Science, Jenderal Soedirman University, Purwokerto 999006, Indonesia
- ⁸ Marine Biology Institute, Shantou University, Shantou 515063, China

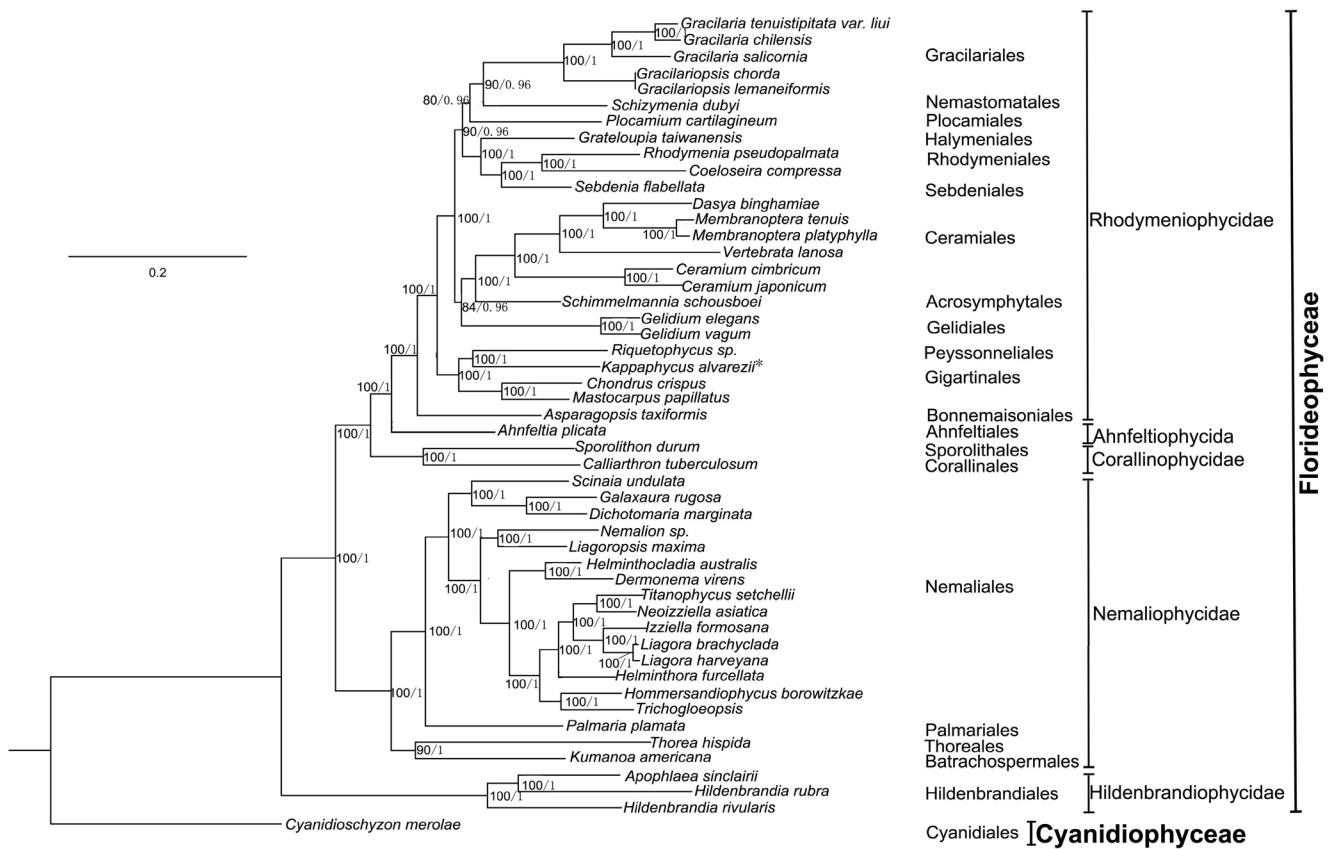


Fig. 4 ML and BI phylogenetic trees generated using 144 concatenated plastid protein-coding genes from 49 Florideophyceae species. *Cyanidioschyzon merolae* was set as an outgroup; the support values

for each node are shown from maximum likelihood bootstrap and Bayesian posterior probabilities. Asterisk indicates newly sequenced *Kappaphycus alvarezii* in this study

Publisher's note Springer Nature remains neutral with regard to jurisdictional claims in published maps and institutional affiliations.