

Tax structure and macroeconomic performance

Giampaolo Arachi^{1,3} · Valeria Bucci¹ ·
Alessandra Casarico^{2,3,4}

Published online: 9 June 2015

© Springer Science+Business Media New York 2015

Abstract This paper reassesses the relationship between tax structure and long-run income, using as indicators of tax structure both a new series of implicit tax rates based on Mendoza et al. (J Public Econ 66:99–126, 1997) and tax ratios, adopting a dynamic panel estimation strategy, and explicitly accounting for cross-sectional dependence in the panel. When implicit tax rates are used, the paper shows that the link between tax structure and long-run income per capita is not robust to the adoption of different assumptions on observable and unobservable heterogeneity across countries. When tax ratios are used, there is some evidence of a negative impact of labour taxation on long-run income, but this result is shown to capture non-fiscal effects coming from the evolution of the labour share. Turning to the short run, the research presented here finds strong evidence of a positive effect on per capita income of a tax shift from labour and capital taxation towards consumption taxation, which provides support for fiscal devaluations.

Keywords Long-run income · Tax structure · Fiscal devaluation · Cross-sectional dependence

JEL Classification E62 · H30 · O43

✉ Valeria Bucci
valeria.bucci@unisalento.it

¹ Dipartimento di Scienze dell'Economia, Università del Salento, Via per Monteroni, 73100 Lecce, Italy

² Department of Policy Analysis and Public Management, Università Bocconi, Via Roentgen 1, 20136 Milan, Italy

³ Dondena, Milan, Italy

⁴ CESifo, Munich, Germany

1 Introduction

The goal of this paper is to reassess the relationship between tax structure and growth in a sample of OECD countries from 1965 to 2011, using as indicators of tax structure both a new series of implicit tax rates based on the methodology developed by [Mendoza et al. \(1997\)](#) and tax ratios.

The academic and policy debate on how taxes and their structure affect economic performance is a long-standing one. The global downturn brought about by the 2008 financial crisis renewed interest in a specific issue, namely the link between a tax system and growth. Specifically, [Arnold et al. \(2011b\)](#) have recently argued that there is strong empirical evidence of a “tax and growth ranking”, with recurrent taxes on immovable property being the least harmful (or most beneficial) in terms of their effect on long-run GDP per capita, followed by consumption taxes (and other property taxes), personal income taxes, and corporate income taxes.

These findings had a significant impact on the recent policy debate in Europe on the desirability of carrying out a tax shift from labour income taxation, and especially from social security contributions, to broad based, general consumption taxes, specifically VAT (for a survey see [D’Antoni and Zanardi 2011](#)). The OECD has recently issued many recommendations on the opportunity to introduce growth-oriented tax reforms, e.g. [OECD \(2008\)](#) and [\(2010\)](#), and a tax shift towards consumption is part of the reform package. A similar prescription is proposed by the European Commission [\(2013\)](#).

Previous literature does not deliver clear-cut results on the effects of taxes on macro-economic performance. [Mendoza et al. \(1997\)](#) argue that both theory and empirical evidence corroborate the so-called Harberger’s conjecture: changes in tax policy may affect investment rates and improve welfare through efficiency gains, but do not affect growth. They analyse an OECD country panel of 5-year averaged data and find modest effects of capital and labour income taxes on investment, and negligible effects on GDP growth. [Kneller et al. \(1999\)](#) and [Bleaney et al. \(2001\)](#), though, find that distortionary taxes have a negative and significant impact on growth, whereas non-distortionary taxes do not.

Comparisons between different results in the literature and their reconciliation are quite difficult as different studies are based on different proxies for the relevant tax rates and adopt diverse empirical strategies.

With respect to tax rates, most of the literature relies on aggregate measures of the average tax burden, such as the ratio between tax revenue and GDP ([Kneller et al. 1999](#); [Bleaney et al. 2001](#)) or the share of one type of tax in total revenue ([Arnold et al. 2011b](#); [Xing 2012](#)). Authors distinguish between personal, corporate, consumption, and property taxes and use their share over total tax revenues as indicators of tax structure.¹ [Mendoza et al. \(1997\)](#) propose an alternative methodology. Following [Mendoza et al. \(1994\)](#), they calculate macrolevel effective tax rates [also called “implicit tax rates” by [European Commission \(2013\)](#); see also [Martinez-Mongay \(2000\)](#) and [Carey and Tchilinguirian \(2000\)](#)] by taking the ratio between the revenue derived from a par-

¹ Some studies ([Gemmell et al. 2013](#); [Sonedda 2009](#)) also suggest the need to distinguish between average and marginal tax rates and between micro-based tax rates (e.g. statutory or effective tax rates at the individual level) and macrobased tax rates.

ticular type of tax and its potential tax base, the latter estimated from national accounts. The advantage of this approach is twofold. First, effective (or implicit) tax rates can be immediately interpreted as they represent the wedge distorting optimizing behaviour in a representative agent setting. The implicit tax rate on consumption measures the percentage difference between post-tax consumer prices and pre-tax prices at which firms supply consumer goods, whereas the implicit tax rate on labour and on capital corresponds to the percentage difference between post- and pre-tax income. Second, compared to tax ratios, they are less directly affected in the long run by the development of factor shares. This can be illustrated by means of a simple decomposition: the share of tax on factor i in total revenue (i.e. the i tax ratio) is equal to the implicit tax rate on i , multiplied by the share of factor i 's compensation on GDP, multiplied by GDP over total revenue. Thus, given the total tax burden on GDP and the implicit tax rate on i , the i tax ratio is correlated with the evolution of factor i 's share.

Because both implicit tax rates and tax ratios can be (and have been) used to describe tax structure, we conduct the analysis using both indicators. If we use the former, and for a given total tax-to-GDP ratio, we would say that taxation is uniform when average (effective) tax rates on capital, labour, and consumption are the same, as in a Ramsey-type set-up.

The differences in the empirical strategies are instead motivated by the adoption of diverse approaches to distinguishing between long-run and transitory effects of taxes on GDP. As noted by [Arnold et al. \(2011b\)](#), it is possible that tax changes that encourage innovation and entrepreneurship have a persistent long-run impact on income, whereas tax changes that affect investment can have effects that fade out in the long run. The same applies to tax changes affecting labour supply. Early literature ([Mendoza et al. 1997](#); [Kneller et al. 1999](#)) tries to extract long-run information from annual data by taking averages over a 5-year period so as to wash out cyclical fluctuations, and it only estimates current-period effects in a static panel. [Bleaney et al. \(2001\)](#) argue that this approach is inadequate, as they find evidence that fiscal variables in a 5-year period have a significant effect in the subsequent 5-year period. More recently, [Arnold et al. \(2011b\)](#) rely on an error correction representation that makes full use of the available time series information and provides estimates of both long-run and short-run parameters without the need for long-lag structures. [Xing \(2012\)](#) shows that the results of the relationship between tax structure and growth are highly sensitive to the method used for estimating the error correction model. She finds evidence that the homogeneity restriction imposed by the PMG estimator is invalid for some of the long-run coefficients and shows that the tax ranking established by [Arnold et al. \(2011b\)](#) is not robust, once such a restriction is removed.

A further weakness of the existing literature is that the empirical approach assumes cross-sectional independence in the panel, i.e. that regression residuals show no systematic patterns of correlation across countries. Such a correlation would arise if there are shocks that affect all countries (albeit to a different extent) and if one observes more localized spillover effects between neighbouring countries. It is well known ([Phillips and Sul 2003](#); [Andrews 2005](#); [Pesaran 2006](#); [Bai 2009](#); [Pesaran and Tosetti 2011](#)) that if one does not control for cross-sectional dependence, estimates based on macrolevel cross-country panel data may be biased. This concern is particularly salient in our setting. In the period from 1965 to 2011, on which we focus here, countries consid-

ered in our sample were hit by several common economic shocks (e.g. the oil crisis in the 1970s and the recent financial crisis); they experienced waves of reforms affecting their economic environment (e.g. a switch from fixed to flexible exchange rates or vice versa, participation in a free trade area) and their institutional and regulatory framework (e.g. changes in the relationship between the government and the central bank, changes in antitrust policies, and regulation of the labour market). Further, there were fundamental innovations in tax policies (e.g. the introduction of VAT in Europe and the diffusion of tax withholding). Local spillovers related to tax strategies are also pervasive, as emphasized by the tax competition literature.

Starting from an error correction model of the type introduced by [Arnold et al. \(2011b\)](#), we test the robustness of the “tax and growth ranking”—using both implicit tax rates and tax ratios as indicators of tax structure—under different assumptions regarding the heterogeneity in the long-run tax–growth nexus across countries and the heterogeneity in the response to unobservable global shocks, or local spillovers. Following [Eberhardt and Presbitero \(2013\)](#), we adopt standard linear regression models, albeit of a fashion that accounts for both observed and unobserved heterogeneity. Specifically, we account for the presence of unobserved heterogeneity by using the [Pesaran \(2006\)](#) common correlated effects (CCE) estimator, adjusted to the dynamic set-up following the suggestions by [Chudik and Pesaran \(2013\)](#). We thus contribute to the existing literature in three respects: first, we analyse tax structure by classifying taxes according to the margin they affect rather than the formal definition of their bases and categories of taxpayers; second, we complement the analysis based on tax ratios with the one based on implicit tax rates; third, our estimation strategy does not rely on the long-run homogeneity assumption and it addresses the issue of cross-sectional dependence.

When we use implicit tax rates as indicators of tax structure, we find evidence of a positive effect of a revenue-neutral shift towards consumption taxation only by imposing the restriction that the long-run coefficients are homogeneous across countries and by neglecting the distorting impact of cross-sectional dependence in the form of unobserved global shocks and local spillover effects. Once observed and unobserved heterogeneity are properly accounted for, we cannot detect any significant effect of the tax structure on long-run income. There is, though, strong evidence of a positive short-run effect on income from a tax shift from labour and capital towards consumption. When we use tax ratios rather than implicit tax rates as indicators of tax structure, we find that the labour tax ratio negatively affects long-run output. However, this result seems to be driven by changes in the wage share of GDP, rather than by changes in the labour tax wedge.

The next section describes the model specification, Sect. 3 presents the data and discusses regression results, and Sect. 4 provides some concluding remarks.

2 Empirical model specification

Following recent literature ([Arnold et al. 2011b](#); [Xing 2012](#); [Eberhardt and Presbitero 2013](#)), the empirical analysis is performed by estimating an error correction model (ECM) specified as:

$$\Delta \ln y_{it} = -\varphi_i \left(\ln y_{it-1} - \sum_j \beta_i^j X_{it}^j - \sum_m \beta_i^m T_{it}^m \right) + \sum_j b_i^j \Delta X_{it}^j + \sum_m b_i^m \Delta T_{it}^m + \gamma_i z_t + \delta_i + \varepsilon_{it} \quad (1)$$

where $\ln y_{it}$ is the log of GDP per capita in country i and at time t calculated as the ratio between GDP at constant prices and constant PPPs (in millions of US dollars) and the size of the working-age population (in thousands). The vector of non-fiscal variables, X_{it}^j , includes physical capital investment, human capital, and population growth. In particular, physical capital investment is the total gross fixed capital formation as a percentage of GDP; human capital is measured by the average years of schooling of the working-age population; population growth is the annual growth rate of the working-age population. The vector of fiscal variables T_{it}^m includes total revenue over GDP and the implicit tax rates as proxies of tax wedges on consumption, labour, and capital or, alternatively, tax revenues from consumption, labour, and capital, respectively, over total tax revenues (i.e. tax ratios). The variable z_t represents a country-specific time effect, δ_i is a country-specific intercept, and ε_{it} is the error term.²

The parameters β_i^j and β_i^m in Eq. (1) represent the long-run equilibrium relationship between the log of GDP per capita and the vectors of non-fiscal and fiscal variables, respectively, whereas the parameters b_i^j and b_i^m capture the short-run relationships of the log of GDP per capita with non-fiscal and fiscal variables. The parameter φ_i indicates the speed of convergence of the economy to its long-run equilibrium. The term in round brackets represents the candidate cointegrating relationship we seek to identify in our panel time series approach. By relaxing the “common factor restriction” implicit in the nonlinear relationship between parameters in Eq. (1), the model can be reparameterized as follows:

$$\Delta \ln y_{it} = \pi_i^c \ln y_{it-1} + \sum_j \pi_i^j X_{it}^j + \sum_m \pi_i^m T_{it}^m + \sum_j b_i^j \Delta X_{it}^j + \sum_m b_i^m \Delta T_{it}^m + \gamma_i z_t + \delta_i + \varepsilon_{it} \quad (2)$$

² In both exogenous and endogenous growth models, taxes may affect the long-run GDP level through two different channels: by affecting productivity and by altering factors’ accumulation. As shown in Arnold et al. (2011a), the empirical specification in (1) is compatible with both exogenous and endogenous growth models. However, the presence of standard factors of production (labour, physical, and human capital) among the controls implies that the estimated coefficients of the fiscal variables would only capture the impact of the tax structure through the first channel (i.e. factor productivity). As a consequence, the analysis may over- or underestimate the effect of tax structure on the long-run GDP level. This limitation is shared by most of the existing literature. An analysis of the effect of changes in tax structure on long-run GDP via the investment in physical and human capital is beyond the scope of this paper and is left for future research.

Long-run parameters can be calculated from the coefficients on the terms in levels, π_i^j and π_i^m , since $\beta_i^j = -\frac{\pi_i^j}{\pi_i^c}$ and $\beta_i^m = -\frac{\pi_i^m}{\pi_i^c}$.

The coefficient $\pi_i^c = -\varphi_i$ measures the speed at which the economy returns to the long-run equilibrium. As highlighted by [Eberhardt and Presbitero \(2013\)](#), inference on this parameter will provide insights into the presence of a long-run equilibrium relationship: if $\pi_i^c = 0$ ($\varphi_i = 0$), there is no cointegration and the model reduces to a regression with variables in first differences. If $\pi_i^c \neq 0$ ($\varphi_i \neq 0$) variables in round brackets in Eq. (1) are cointegrated and, after a shock, the economy returns to the long-run equilibrium path.

In order to control for unobservables as well as for omitted elements of the cointegration relationship, we follow the CCE approach suggested by [Pesaran \(2006\)](#) and include in the regression cross-sectional averages of all variables in the model:

$$\begin{aligned} \Delta \ln y_{it} = & \pi_i^c \ln y_{it-1} + \sum_j \pi_i^j X_{it}^j + \sum_m \pi_i^m T_{it}^m + \sum_j b_i^j \Delta X_{it}^j + \sum_m b_i^m \Delta T_{it}^m \\ & + \sigma_i^c \overline{\ln y}_{t-1} + \sum_j \sigma_i^j \bar{X}_t^j + \sum_m \sigma_i^m \bar{T}_t^m + s_i \overline{\Delta \ln y}_t + \sum_j s_i^j \overline{\Delta X}_t^j \\ & + \sum_m s_i^m \overline{\Delta T}_t^m + \gamma_i z_t + \delta_i + \varepsilon_{it} \end{aligned} \quad (3)$$

This specification allows each country to have its own slope coefficients both on the observed explanatory variables and on the unobserved common factors. This formulation can also be regarded as a way of introducing flexible trends.

The CCE method has been shown to be robust to different types of cross-sectional dependence of errors, possible unit roots in explanatory variables, and slope heterogeneity ([Kapetanios et al. 2011](#); [Pesaran and Tosetti 2011](#); [Chudik et al. 2011](#)). However, the CCE approach may be invalid when the panel includes a lagged dependent variable and/or weakly exogenous variables as regressors, as is the case in our model. [Chudik and Pesaran \(2013\)](#) show that the CCE approach continues to be valid if a sufficient number of lags of cross-sectional averages, as well as cross-sectional averages of one or more additional covariates, are included in Eq. (3). We therefore also run regressions to correct the CCE approach, according to the indications of [Chudik and Pesaran \(2013\)](#).

The analysis focuses on tax structure as measured both by implicit tax rates and by tax ratios, and aims at evaluating the impact of revenue-neutral tax policy changes on the long-run level of GDP. For this reason, following [Arnold et al. \(2011b\)](#) and [Xing \(2012\)](#), we control for the overall tax burden and always omit one or more tax indicators in each regression. The omitted tax structure indicators are assumed to adjust to compensate for changes in revenue brought about by changes in the other tax structure indicators that are included in the regression.

3 Data and results

3.1 Data

We combine different data sources to obtain an unbalanced panel data set that includes 15 OECD countries³ over the period from 1965 to 2011. The growth regression considers GDP as a function of several non-fiscal determinants suggested by the literature (investment in physical capital, human capital, working-age population growth) and a set of fiscal variables. Specifically, non-fiscal data come from OECD National Accounts, OECD Factbook (Economic, Environmental and Social Statistics), OECD Statistical Population, OECD Education at a Glance, and [Arnold et al. \(2011a\)](#).

The implicit tax rate on consumption (ITR_c) is computed as the sum of revenues from consumption taxes on goods and services divided by the sum of private and government consumption. The implicit tax rate on capital (ITR_k) includes corporate profit taxes, taxes on household capital income, and various property taxes. The implicit tax rate on labour (ITR_l) is computed as the sum of taxes on labour income, revenues from social security contributions, and revenues from payroll taxes divided by labour income. Data on potential tax bases are taken from OECD National Accounts and OECD Labour Force Statistics, whereas revenue data are from OECD Revenue Statistics.

The implicit tax rates are calculated using the methodology proposed by [Mendoza et al. \(1997\)](#) as amended by [Carey and Tchilinguirian \(2000\)](#), which allows for overcoming some of the shortcomings of standard calculation of implicit tax rates (e.g. [European Commission 2012](#)). In particular, the assumption that all income from self-employment is capital income is dropped in favour of assuming that the self-employed earn both labour and capital income. This adjustment is relevant when comparing countries with significant differences in the share of the self-employed in total employment or when this share changes over time. Furthermore, government consumption is added to the tax base of consumption taxes. This allows us to compare countries with different dimensions of the public sector. In the computation of ITR_k and ITR_l , we take into account that in most countries,⁴ employees' social security contributions are deductible from taxable income. We also make some specific adjustments to account for some peculiar taxes that the OECD classifies in the residual category of "other taxes", such as *IRAP* in Italy. The resulting implicit tax rates and the method used to compute them are described in Appendix 1.

Tax ratios TR_c , TR_k , and TR_l are obtained by dividing tax revenues on consumption, capital, and labour, respectively, by total tax revenues. Revenues for each factor are the same as those used to compute the numerator of implicit tax rates. When comparing the results of this paper with the results of [Arnold et al. \(2011b\)](#) and [Xing \(2012\)](#), it should be noted that our tax ratios are calculated using a different classification of taxes. As far as income taxes are concerned, we allocate their revenues on the basis of

³ The 15 countries are: Australia, Austria, Belgium, Canada, Finland, France, Greece, Italy, Japan, Netherlands, Norway, Spain, Sweden, the UK, and the USA.

⁴ The countries that do not allow social security contributions to be deducted are Australia, Canada, the UK, and the USA.

whether they are levied on capital or on labour, whereas [Arnold et al. \(2011b\)](#) and [Xing \(2012\)](#) distinguish between taxes levied on personal or corporate income. In addition, they consider property taxes separately, whereas we include them in the capital tax ratio.

In order to perform some robustness checks, we include in the empirical model two additional variables: a proxy of trade openness, computed as the sum of exports and imports as a share of GDP, and a proxy of public expenditure, computed as the ratio of general government final consumption and GDP, taken from OECD International Trade (MEI) and OECD Revenue Statistics.

Appendix 2 reports descriptive statistics of all variables and graphs describing the evolution of implicit tax rates and of tax ratios. The implicit tax rate on capital displays a more evident short-run dynamic, with some sharp spikes. As we detail in Appendix 1, the calculation of the implicit tax rate on capital features in the denominator the net operating surplus as a measure of the base on which capital taxes are raised, and in the numerator it includes taxes on property, on income, on profits, and on capital gains of corporations. The main reason for the volatility of the implicit tax rate on capital is the mismatch between the net operating surplus, in the denominator, and the base of all taxes recorded in the numerator. For example, property taxes are often levied on presumed rents rather than on actual rents or capital value, whereas the corporate tax base differs from net operating surplus, because losses are usually carried forward. As a result, property and corporate tax base do not immediately react to a reduction in net operating surplus. This explains why we observe large jumps in the ITR_k during recessions (as those that hit many European countries in the early 1990s) and why in some cases (e.g. Finland during the 1991 financial crisis) the ITR_k rises above 1. Another source of discrepancy in movements of the numerator and the denominator of ITR_k stems from capital gains, which are not included in the net operating surplus in national accounts because they are not related to the production process. During periods of booming asset prices, like the years preceding the 2008 financial crisis, capital gains foster revenue coming from property and corporate taxes, without affecting the net operating surplus, thus increasing the ITR_k . The short-term dynamics included in the estimation procedure are meant to capture precisely these kinds of cyclical fluctuations and to avoid inference on the long-run relationship between GDP and tax structure being affected by an endogeneity bias.

Before running our regressions, we perform a preliminary analysis and carry out a series of panel unit root tests and the [Pesaran \(2004\)](#) CD test for cross-sectional dependence. These tests indicate that the level variables series are integrated of order 1 and subject to considerable cross-sectional dependence.⁵

3.2 Results

In terms of methodology adopted, in order to compare our results with those in [Arnold et al. \(2011b\)](#), [Gemmell et al. \(2013\)](#), and [Xing \(2012\)](#), we first estimate Eq. (1) using the pooled mean group (PMG) estimator ([Pesaran et al. 1999](#)), which assumes

⁵ Results are available upon request.

homogeneous long-run coefficients across countries (i.e. $\beta_i^j = \beta^j$ and $\beta_i^m = \beta^m$) but allows for heterogeneous speed of convergence and short-run dynamics. Time effects are captured by country-specific time trends and a dummy variable for the economic crisis (it assumes value 1 for the years 2008 through 2011). We also include country-fixed effects to control for unobserved time invariant heterogeneity. Table 1 summarizes the PMG estimates of the long-run and short-run coefficients and the estimated speed of convergence across countries under different model specifications. In column 1, we regress the log of GDP per capita on measures of physical and human capital and on population growth. In columns 2 through 7, we include fiscal variables. In columns 2 through 4, tax structure is measured by implicit tax rates; in columns 5 through 7, we adopt tax ratios. In each regression, we always control for total tax revenues over GDP in order to focus on revenue-neutral tax changes.⁶ Relying more on revenues coming from a given tax instrument changes the amount to be raised via the other tax instruments: this outcome is achieved by always omitting from the regressions one tax structure indicator.⁷ Column 2 (5) considers the effect of an increase in the tax wedge (tax ratio) on consumption and on labour, compensated by a change in the tax wedge (tax ratio) on capital. Column 3 (6) estimates the impact of an increase of implicit tax rates (tax ratios) on labour and on capital, compensated by a change in the implicit tax rate (tax ratio) on consumption, whereas column 4 (7) refers to an increase in the implicit tax rates (tax ratios) on consumption and on capital, compensated by a change in the labour tax wedge (tax ratio).⁸

The sign of the estimated long-run coefficients of the non-fiscal control variables is consistent with the findings of previous literature. There is evidence of error correction as the convergence rate is highly statistically significant.

Overall, when we use implicit tax rates as indicators of tax structure, the PMG estimates in columns 2 through 4 seem to provide evidence that a revenue-neutral tax shift from labour and capital to consumption has a positive effect on the long-run level of income per capita: the coefficient of the implicit tax rate on consumption is positive and statistically significant when the implicit tax on capital or on labour (columns 2 and 4, respectively) is changed to keep the total amount of revenues

⁶ We include this control variable to avoid the bias that could result from a correlation between the tax mix and the overall tax burden. However, the value of the coefficient of this variable cannot be interpreted as an estimate of the effect of the overall tax burden on GDP for a given tax structure. Since we always omit from the regressions at least one tax structure indicator, the coefficient of tax revenues over GDP represents the impact on long-run GDP of an increase in the overall tax burden achieved by a change in the omitted indicator(s). This implies that the sign and the significance of the estimated coefficient may vary across the different regressions we run to evaluate revenue-neutral tax changes. Furthermore, as highlighted by Arnold et al. (2011b), our regressions cannot provide an accurate estimate of this coefficient because we do not take into account how any additional tax revenue is spent.

⁷ When tax structure is measured by tax ratios, the increase in one tax ratio—given the share of total revenues in GDP—necessarily delivers a reduction in one or more of the others. When we measure tax structure by implicit tax rates, the increase in one of them—again, given the share of total revenues in GDP—causes a change in one or more of the others. The sign of the change is not known a priori as it depends on the elasticity of the tax base.

⁸ Given the error correction specification, it is important to check that the residuals from the long-run equation are stationary to avoid spurious correlations. The errors of the regression equation have been tested for non-stationarity using panel unit root tests based on Im et al. (2003). Non-stationarity of the residuals was rejected at the 1% level. Results are available upon request.

Table 1 PMG estimations in different model specifications

	(1)	(2)	(3)	(4)	(5)	(6)	(7)
Long-run coefficients							
Fixed investments	0.286*** (0.031)	0.284*** (0.038)	0.366*** (0.036)	0.331*** (0.038)	0.219*** (0.037)	0.219*** (0.036)	0.209*** (0.035)
Human capital	0.109 (0.123)	0.217 (0.140)	0.146 (0.130)	0.250* (0.148)	0.369** (0.169)	0.347** (0.162)	0.386** (0.166)
Population growth	-0.055*** (0.011)	-0.065*** (0.011)	-0.065*** (0.011)	-0.068*** (0.012)	-0.089*** (0.014)	-0.086*** (0.014)	-0.088*** (0.013)
Tax revenue/GDP		-0.608 (0.372)	0.969** (0.369)	-0.567** (0.236)	-0.600** (0.228)	-0.684** (0.211)	-0.519** (0.209)
ITR _c		1.943*** (0.444)		1.717*** (0.448)			
ITR _l		-0.309 (0.351)	-0.923** (0.365)				
ITR _k			-0.170*** (0.046)	-0.076* (0.040)			
TR _c					0.559** (0.195)		1.374*** (0.212)
TR _l					-0.844*** (0.171)	-1.322*** (0.224)	
TR _k						-0.438** (0.180)	0.785*** (0.143)

Table 1 continued

	(1)	(2)	(3)	(4)	(5)	(6)	(7)
Short-run coefficients							
ΔITR_c		0.549** (0.166)		0.349* (0.164)			
ΔITR_l		0.295** (0.107)	-0.102 (0.137)				
ΔITR_k			-0.064* (0.036)	-0.021 (0.044)			
ΔTR_c					-0.300** (0.095)		-0.014 (0.069)
ΔTR_l					-0.339*** (0.072)	0.008 (0.077)	
ΔTR^k						0.342** (0.104)	0.329*** (0.075)
Convergence rate	-0.218*** (0.030)	-0.196*** (0.027)	-0.194*** (0.028)	-0.180*** (0.027)	-0.163*** (0.021)	-0.167*** (0.022)	-0.167*** (0.022)
RMSE	0.015	0.014	0.014	0.013	0.014	0.013	0.013
CD test	15.28	11.01	10.67	10.61	10.59	10.48	10.88
Observations/countries	619/15	565/15	565/15	565/15	565/15	565/15	565/15

Results for a sample of 15 countries based on an error correction model (pooled mean group) with the first difference of the log of real GDP per capita as dependent variable. These models contain country-specific linear trends and a dummy variable for the economic crisis (it assumes value 1 for the years 2008–2011). Results in (1) are obtained by estimating a model without fiscal variables; in columns (2)–(7), we add to the empirical model fiscal variables; all the regressions contain the share of tax revenue on GDP and a pair of implicit tax rates (columns 2–4) or of tax ratios (columns 5–7). Implicit tax rates (ITR) are computed as the ratio between the revenue derived from a particular type of tax and its potential base estimated from national accounts. Tax ratios (TR) are computed as the ratio between the revenue derived from a particular type of tax and total tax revenue. In particular, in (2) we include the implicit tax rates on consumption and on labour; in (3) the implicit tax rates on labour and on capital; and in (4) the implicit tax rates on consumption and on capital. In (5) we include consumption and labour tax ratios; in (6) labour and capital tax ratios; in (7) consumption and capital tax ratios. RMSE is the root mean square error. CD test reports the Pesaran (2004) test of cross-sectional dependence based on the residuals. The following symbols indicate different significance levels: *** significant at 1%; ** significant at 5%; * significant at 10%

constant. The coefficient of the implicit tax rate on labour and on capital is both negative and statistically significant when these taxes are increased to compensate for a change in the implicit tax rate on consumption (column 3). In contrast, there is no clear evidence of a positive effect on long-run income per capita of a tax shift from capital to labour or from labour to capital (the coefficients in columns 2 and 4 are both negative and not, or only mildly, significant). These results suggest that taxation on consumption is most favourable to growth, whereas capital and labour taxation cannot be ranked in terms of their effect on GDP.

The results partly change when we measure tax structure adopting tax ratios. The effect of taxes on consumption remains positive and highly significant in all regressions, as we highlighted for the implicit tax rate. However, we obtain a ranking as well for capital taxation and labour taxation, with the latter being the most harmful for growth.

Xing (2012) has shown that the homogeneity restriction imposed by the PMG estimator is invalid for some of the long-run coefficients. It is well known that inference based on the PMG estimator may be unreliable in this instance. In Table 2, we compare PMG (columns 1 and 4) and mean group (MG) estimates (columns 2–3 and 5–6) for a specification in which we include only the tax structure measures that have the largest impact on GDP, namely the implicit tax rate on consumption on the one side (columns 1–3) and consumption and labour tax ratios (columns 4–6) on the other.⁹ Differently from the PMG, the MG estimation yields country-specific long-run tax coefficients that are then averaged across the panel. In columns 3 and 6, we also employ robust regression to weigh down outliers in the computation of the averages (see Eberhardt and Presbitero 2013). PMG and MG bring about very similar estimates for all long- and short-run coefficients, with the exception of the implicit tax rate on consumption and the consumption tax ratio, which are no longer significant in the MG estimation. The coefficient on the labour tax ratio remains negative and significant in the MG estimation as well.

We test the validity of the common long-run coefficients restriction using both the Hausman (1978) test and an alternative Wald test, as suggested by Xing (2012). We first look at implicit tax rates. The results, reported in Table 3, Panel A, and Table 4, Panel A, are somewhat mixed. The Hausman test that considers all five coefficients jointly does not reject the validity of the homogeneous coefficient hypothesis. However, the same test performed on each of the coefficients separately casts some doubt on the homogeneity restriction on the coefficient of the implicit tax rate on consumption, which is rejected at the 10% level. In contrast, the Wald test in Table 4, Panel A, does not reject the homogeneity restriction for any single coefficient, whereas it rejects the hypothesis of equal long-run coefficients for all five variables jointly.

⁹ We use this more parsimonious specification to allow a straightforward comparison with the results of the Pesaran (2006) CCE estimator that will be presented in Table 5. Indeed, we cannot implement the Pesaran (2006) approach using all tax indicators because our time series are not sufficiently long. To check the robustness of our results in Table 2, we have replicated—using the MG estimator—the regressions in Table 1, maintaining all the tax structure indicators used in the PMG regression. We still find that no tax structure measure is statistically significant when implicit tax rates are used. When tax ratios are implemented, there is evidence that labour taxes are the most harmful for growth. The Hausman and Wald tests still cast doubts on the assumption of equal long-run coefficients. The results are available upon request.

Table 2 PMG and MG estimations

	(1) PMG	(2) MG (simple averages)	(3) MG (weighted averages)	(4) PMG	(5) MG (simple averages)	(6) MG (weighted averages)
Long-run coefficients						
Fixed investments	0.208*** (0.036)	0.243*** (0.058)	0.278*** (0.058)	0.219*** (0.037)	0.269** (0.119)	0.232** (0.061)
Human capital	0.243 (0.162)	-0.129 (0.686)	-0.077 (0.257)	0.369** (0.169)	1.270 (1.737)	-0.430 (0.587)
Population growth	-0.070*** (0.012)	-0.084** (0.030)	-0.056** (0.019)	-0.089*** (0.014)	-0.065** (0.024)	-0.069** (0.022)
Tax revenue/GDP	-1.035*** (0.218)	-1.212*** (0.432)	-0.507** (0.170)	-0.600** (0.228)	-0.497 (0.502)	-0.463 (0.297)
ITR _c	2.548*** (0.452)	0.049 (1.695)	1.220 (0.967)			
TR _c				0.559** (0.195)	-0.173 (0.453)	-0.126 (0.476)
TR _i				-0.844*** (0.171)	-1.496* (0.778)	-0.760* (0.412)

Table 2 continued

	(1)	(2)	(3)	(4)	(5)	(6)
	PMG	MG (simple averages)	MG (weighted averages)	PMG	MG (simple averages)	MG (weighted averages)
Short-run coefficients						
ΔITR_c	0.393** (0.158)	0.577*** (0.139)	0.575** (0.150)			
ΔTR_c				-0.300** (0.095)	-0.243** (0.117)	-0.221 (0.127)
ΔTR_l				-0.339*** (0.072)	-0.293** (0.104)	-0.290** (0.111)
(Mean) convergence rate	-0.190*** (0.026)	-0.262*** (0.041)	-0.255*** (0.047)	-0.163*** (0.021)	-0.279*** (0.039)	-0.274*** (0.041)
RMSE	0.013	0.014	0.014	0.014	0.013	0.013
CD test	10.58	10.62	10.62	10.59	8.62	8.62
Observations/countries	565/15	565/15	565/15	565/15	565/15	565/15

Results for a sample of 15 countries based on an error correction model with the first difference in the log of real GDP per capita as dependent variable. These models contain country-specific linear trends and a dummy variable for the economic crisis (it assumes value 1 for the years 2008–2011). In columns (1)–(3), we use as fiscal variables the share of tax revenue on GDP and the implicit tax rate on consumption; in columns (4)–(6), we use as fiscal variables the share of tax revenue on GDP and consumption and labour tax ratios. The implicit tax rate on consumption (ITRC) is computed as the ratio between the revenue derived from consumption tax and its potential base estimated from national accounts. Tax ratios (TR) are computed as the ratio between the revenue derived from a particular type of tax and total tax revenue. Columns (1) and (4) report the results obtained estimating a pooled mean group model; columns (2) and (5) report the results obtained estimating a mean group model; columns (3) and (6) report the robust coefficients estimated using a mean group model. RMSE is the root mean square error. CD test reports the Pesaran 2004 test of cross-sectional dependence based on the residuals. The following symbols indicate different significance levels: *** significant at 1%; ** significant at 5%; * significant at 10%

Table 3 Hausman test of equal long-run coefficients across countries (comparing PMG and MG)

Variables	Fixed investments	Human capital	Population growth	Tax revenue/GDP	ITR _c	Joint test	
<i>Panel A. Fiscal variables: tax revenue on GDP and implicit tax rate on consumption</i>							
Difference	0.035	-0.373	-0.014	-0.178	-2.499	0.405	
S.E.	(0.064)	(0.849)	(0.036)	(0.499)	(2.086)		
<i>p</i> value	0.890	0.686	0.941	0.801	0.083		
Variables	Fixed investments	Human capital	Population growth	Tax revenue/GDP	ITR _c	ITR _l	Joint test
<i>Panel B. Fiscal variables: tax revenue on GDP and tax ratios on consumption and on labour</i>							
Difference	0.050	0.901	0.024	0.103	-0.732	-0.652	
S.E.	(0.161)	(2.409)	(0.030)	(0.660)	(0.599)	(1.068)	
<i>p</i> value	0.901	0.562	0.890	0.899	0.344	0.528	0.881

Panel A shows the results of the Hausman test comparing PMG and MG estimations presented in Table 2, columns (1) and (2), respectively. These estimations include as fiscal variables the share of tax revenue on GDP and the implicit tax rate on consumption. Panel B shows the results of the Hausman test comparing PMG and MG estimations presented in Table 2, columns (4) and (5), respectively. These estimations include as fiscal variables the share of tax revenue on GDP and consumption and labour tax ratios

Table 4 Wald test of equal long-run coefficients across countries

Variables	Fixed investments	Human capital	Population growth	Tax revenue/GDP	ITR _c	Joint test	
<i>Panel A. Fiscal variables: tax revenue on GDP and implicit tax rate on consumption</i>							
<i>p</i> value	0.732	0.914	0.832	0.999	0.217	0.058	
Variables	Fixed investments	Human capital	Population growth	Tax revenue/GDP	TR _c	TR _i	Joint test
<i>Panel B. Fiscal variables: tax revenue on GDP and tax ratios on consumption and on labour</i>							
<i>p</i> value	0.816	0.006	0.444	0.951	0.528	0.565	0.000

Results of the Wald test examining the validity of the common long-run coefficients restriction imposed in the PMG estimations. Panel A shows the results of the Wald test on the estimation presented in column (2) of Table 2, which includes as fiscal variables the share of tax revenue on GDP and the implicit tax rate on consumption. Panel B shows the results of the Wald test on the estimation presented in column (5) of Table 2, which include as fiscal variables the share of tax revenue on GDP and consumption and labour tax ratios

Using in the empirical model tax ratios rather than implicit tax rates does not significantly alter our conclusions (see Panel B of Table 3 and Table 4). The Hausman test that considers all five coefficients jointly, and the one that looks at each of them separately, does not reject the validity of the equal long-run coefficient hypothesis. However, the Wald test rejects the homogeneity restriction for human capital and for all five variables jointly. Overall, these results suggest some caution in the interpretation of the coefficients of the PMG estimation.

In both PMG and MG models, the CD statistic highlights the presence of residual cross-sectional dependence. To account for unobserved common factors, we use the Pesaran (2006) CCE estimator and some of its variants.

In Table 5, Panel A reports the results for the analysis that focuses on the implicit tax rate on consumption. In the first column, we adopt the standard CCE estimator in the mean group version (CMG), employing robust regression in the computation of the coefficient averages. The CD statistic drops¹⁰ significantly when we shift from the MG to the CMG estimation, confirming that the use of cross-sectional averages considerably reduces residual cross-sectional dependence. The CMG estimator confirms that the implicit tax rate on consumption has no statistically significant effect on long-run income per capita.

The CCE approach may be invalid in our framework as the model includes a lagged dependent variable and weakly exogenous variables as regressors. Chudik and Pesaran (2013) show that this problem can be overcome by including in the specification lags of all cross-sectional averages of the dependent and of the control variables, as well as a sufficient number of cross-sectional averages of one or more additional covariates. We cannot fully implement this approach as our time series are not sufficiently long. Nonetheless, in the spirit of Eberhardt and Presbitero (2013), we run some robustness checks by adding lags of the cross-sectional average of the dependent variable and by including in the model cross-sectional averages and lags of additional covariates outside the benchmark model. We experiment with proxies of trade openness and of public expenditure. These variables only enter the empirical model in the form of their cross-sectional averages with the aim of helping to identify the unobserved common factors, which represent global shocks and local spillover effects. The results are reported in columns 2 through 9. In no specification, the implicit tax rate on consumption is significant.

These results highlight the relevance of observable and unobservable heterogeneity in the empirical investigation of the nexus between implicit tax rates and long-run growth. The PMG estimation results suggest that a revenue-neutral tax shift towards consumption taxation may be associated with a higher steady-state level of income per capita. However, this effect is not robust to account for heterogeneity in the slopes of long-run coefficient and in the responses to unobservable common shocks.

In Table 5, Panel B replicates the analysis performed in Panel A using the labour tax ratio rather than the implicit tax rate on consumption as an indicator of tax structure. Because in the MG regression with tax ratios only the one on labour was significant, we focus on this variable in the analysis that accounts for cross-sectional dependence.

¹⁰ The CD test decreases from around 10 (columns 2 and 3 of Table 2) in the MG to -1.98 in the CMG model in Table 5, Panel A (column 1).

Table 5 MG estimations with additional controls

	CMG			Trade share			Public expenditure		
	(1) No lags	(2) One lag	(3) Two lags	(4) No lags	(5) One lag	(6) Two lags	(7) No lags	(8) One lag	(9) Two lags
<i>Panel A. Fiscal variables: tax revenue on GDP and implicit tax rate on consumption</i>									
Long-run coefficients									
Tax revenue/GDP	-0.982** (0.341)	-0.966 (0.600)	-0.827 (0.528)	-0.622** (0.286)	-0.452* (0.232)	-0.532** (0.198)	-0.814** (0.341)	-0.818** (0.303)	-0.661* (0.337)
ITR _c	0.306 (1.062)	-0.093 (1.105)	-0.585 (0.922)	0.187 (1.068)	-0.047 (0.901)	-0.557 (0.884)	0.284 (0.739)	0.366 (0.722)	0.096 (0.835)
Short-run coefficients									
ΔITR _c	0.396*** (0.062)	0.322* (0.166)	0.530** (0.167)	0.387** (0.101)	0.411** (0.158)	0.214 (0.152)	0.361*** (0.073)	0.204 (0.147)	0.272 (0.161)
Mean convergence rate	-0.436*** (0.089)	-0.445** (0.107)	-0.454** (0.108)	-0.461*** (0.099)	-0.428** (0.103)	-0.510*** (0.102)	-0.447*** (0.094)	-0.515*** (0.092)	-0.507*** (0.098)
RMSE	0.009	0.009	0.010	0.009	0.009	0.009	0.009	0.010	0.010
CD test	-1.98	-1.33	-1.76	-1.89	-2.43	-2.14	-1.73	-1.90	-2.54

Table 5 continued

	CMG		GDP		Trade share		Public expenditure		
	(1) No lags	(2) One lag	(3) Two lags	(4) No lags	(5) One lag	(6) Two lags	(7) No lags	(8) One lag	(9) Two lags
<i>Panel B. Fiscal variables: tax revenue on GDP and labour tax ratio</i>									
Long-run coefficients									
Tax revenue/GDP	-0.630* (0.355)	-0.729* (0.377)	-0.508 (0.370)	-0.581 (0.352)	-0.638* (0.314)	-0.535* (0.277)	-0.426 (0.329)	-0.830 (0.475)	-0.739* (0.412)
ITR _t	-0.370* (0.208)	-0.297 (0.213)	-0.275 (0.215)	-0.410* (0.199)	-0.345 (0.261)	-0.303 (0.222)	-0.491** (0.204)	-0.417 (0.289)	-0.526** (0.222)
Short-run coefficients									
ΔTR _t	-0.130 (0.103)	-0.098 (0.087)	-0.016 (0.091)	-0.064 (0.111)	-0.071 (0.109)	-0.064 (0.103)	-0.087 (0.105)	-0.024 (0.113)	-0.020 (0.118)
Mean convergence rate	-0.600*** (0.074)	-0.567*** (0.090)	-0.613*** (0.106)	-0.695*** (0.076)	-0.583*** (0.088)	-0.652*** (0.081)	-0.551*** (0.084)	-0.592*** (0.096)	-0.617*** (0.118)
RMSE	0.009	0.009	0.010	0.009	0.009	0.009	0.009	0.09	0.009
CD test	-0.83	-0.73	-0.74	-0.95	-1.92	-1.92	-1.28	-1.18	-0.44

Table 5 continued

	CMG		GDP		Trade share		Public expenditure		
	(1) No lags	(2) One lag	(3) Two lags	(4) No lags	(5) One lag	(6) Two lags	(7) No lags	(8) One lag	(9) Two lags
<i>Panel C. Fiscal variables: implicit tax rate on labour and wages on GDP</i>									
Long-run coefficients									
ITR _t	-0.394 (0.306)	-0.524 (0.380)	-0.536 (0.345)	-0.248 (0.300)	-0.194 (0.554)	-0.458 (0.330)	-0.422 (0.312)	-0.124 (0.321)	0.042 (0.307)
W/GDP	-0.730** (0.278)	-0.522 (0.312)	-0.723** (0.268)	-0.386* (0.212)	-0.519 (0.330)	-0.366 (0.243)	-0.775** (0.295)	-0.815** (0.203)	-0.871** (0.262)
Short-run coefficients									
ΔITR _t	-0.052 (0.105)	-0.072 (0.114)	-0.063 (0.099)	-0.152 (0.122)	-0.152* (0.082)	-0.162** (0.072)	-0.068 (0.103)	-0.068 (0.111)	-0.065 (0.112)
Δ W/GDP	-0.289 (0.126)	-0.286** (0.130)	-0.237 (0.120)	-0.226 (0.137)	-0.233 (0.167)	-0.186 (0.150)	-0.308** (0.121)	-0.268* (0.138)	-0.283** (0.119)
Mean convergence rate	-0.447** (0.101)	-0.443** (0.101)	-0.496*** (0.094)	-0.513** (0.128)	-0.506** (0.131)	-0.550*** (0.113)	-0.400** (0.092)	-0.445*** (0.091)	-0.470** (0.112)

Table 5 continued

	CMG		GDP		Trade share		Public expenditure		
	(1) No lags	(2) One lag	(3) Two lags	(4) No lags	(5) One lag	(6) Two lags	(7) No lags	(8) One lag	(9) Two lags
RMSE	0.008	0.008	0.008	0.009	0.009	0.009	0.009	0.008	0.009
CD test	-1.68	-1.95	-1.73	-1.47	-0.86	-1.45	-1.69	-1.27	-1.90
Observations/countries	565/15	565/15	565/15	565/15	565/15	565/15	565/15	565/15	565/15

Results for a sample of 15 countries based on an error correction model with the first difference of the log of the real GDP per capita as dependent variable. The models in all panels contain, in addition to fiscal variables, fixed investments, human capital, population growth, and country-specific linear trends as controls. The coefficients are not reported. Panel A shows the robust coefficients obtained using as fiscal variables the share of tax revenue on GDP and the implicit tax rate on consumption, computed as the ratio between the revenue derived from consumption tax and its potential tax base estimated from national accounts. Panel B shows the robust coefficients obtained using as fiscal variables the share of tax revenue on GDP and the labour tax ratio, computed as the ratio between the revenue derived from labour tax and total revenues. Panel C shows the robust coefficients obtained using as fiscal variable the implicit tax rate on labour, computed as the ratio between the revenue derived from labour tax and its potential tax base estimated from national accounts, and controlling for the share of wages on GDP. Column (1) reports the robust coefficient estimated inserting into the MG model the cross-sectional averages of all the variables (CMG model); columns (2) and (3) report the robust coefficients estimated inserting into the CMG model, respectively, one and two lags of the cross-sectional average of the log of the real GDP; columns (4), (5), and (6) report the robust coefficients estimated by inserting into the CMG model, respectively, the cross-sectional average, one lag and two lags of the cross-sectional average of trade share; columns (7), (8), and (9) report the robust coefficients estimated inserting into the CMG model, respectively, the cross-sectional average, one lag and two lags of the cross-sectional average of public expenditure. RMSE is the root mean square error. CD test reports the Pesaran (2004) test of cross-sectional dependence based on the residuals. The following symbols indicate different significance levels: *** significant at 1%; ** significant at 5%; * significant at 10%

We find some evidence that the negative impact of the labour tax ratio is robust for controlling for cross-sectional dependence.

Thus, the conclusion one can draw about the relationship between tax structure and long-run per capita GDP seems to hinge critically on the definition of the tax structure one adopts. To further investigate this point, we resort to the decomposition we described at the outset of the paper and introduce it formally. The labour tax ratio can be written as follows: $TR_1 = ITR_1 \frac{W}{GDP} \frac{GDP}{T}$, where W indicates the total labour compensation. We thus note that a regression in which we proxy fiscal variables by the labour tax ratio and by total revenues over GDP—as we do in Table 5, Panel B—is equivalent to one in which we include the implicit tax rate on labour and control for the share of wages over GDP. The labour tax ratio could change not only because the labour tax rate changes, but also because the labour tax base changes. In Table 5, Panel C we find that there is a negative and significant relationship between the share of GDP going to wages and the log of GDP per capita, which suggests that the negative impact of the labour tax ratio on GDP may actually be driven by non-fiscal factors, i.e. changes in the tax base of labour.

We conclude that there is no clear evidence supporting the claim that tax structure, either measured by implicit tax rates or by tax ratios, has an impact on GDP.

Although our analysis focuses on the long run, it is remarkable that in almost all specifications, the short-run coefficient of the implicit tax rate on consumption is positive and highly significant. This is consistent with the so-called fiscal devaluation hypothesis (Alworth and Arachi 2010; De Mooij and Keen 2013; Farhi et al. 2014): a value-added tax increase coupled with a uniform payroll tax reduction may replicate a nominal exchange rate devaluation that fosters exports and growth.¹¹

4 Conclusions

In recent years, many international organizations, e.g. the European Commission, the International Monetary Fund, and the OECD, have strongly supported tax reforms aimed at shifting the tax burden away from capital and labour income to broad-based consumption taxes or to property taxes. The existing literature does not provide clear empirical evidence supporting these policy prescriptions. Several studies have reached conflicting conclusions using different datasets, methodologies, and indicators of tax structure.

When measuring tax structure with implicit tax rates, we find evidence of a positive effect of a revenue-neutral shift towards consumption taxation only by imposing the restriction that the long-run coefficients are homogeneous across countries and by neglecting the distorting impact of cross-sectional dependence in the form of unobserved global shocks and local spillover effects. However, diagnostic tests cast some doubts on the validity of the homogeneity restriction and clearly reject cross-

¹¹ The analysis based on tax ratios does not provide any clear evidence on the short-run effects. The PMG estimator delivers a negative sign for both an increase in consumption and in labour taxation. The former result is in contrast with the fiscal devaluation hypothesis. However, the short-run impacts are not statistically significant when we allow for heterogeneity in the long-run relationship and control for cross-sectional dependence.

sectional independence. Once observed heterogeneity and unobserved heterogeneity are properly accounted for by using methods suggested by the recent panel econometric literature, we cannot detect any significant effect of the tax structure on long-run income.

When we use tax ratios rather than implicit tax rates as indicators of tax structure, we find that the labour tax ratio negatively affects long-run output. However, this result seems to be driven by changes in the wage share in GDP, rather than by changes in the labour tax wedge.

Even though this paper is mainly concerned with the long-run relationship between taxes and income, our analysis based on the implicit tax rates provides strong evidence of a positive short-run effect on income of a tax shift from labour and capital towards consumption. This evidence is in line with the prediction of the literature on fiscal devaluations.

Our analysis can be extended in a few directions. Following the most recent literature, we have estimated a growth regression by controlling for factors' accumulation. The implication is that we have tested whether tax structure has an impact on the long-run GDP level via its effect on factor productivity. However, taxes may also affect GDP through their impact on investment in physical and human capital. These effects may be particularly relevant if growth is endogenous (Myles 2009). Another limitation of the analysis is that we provide insights only regarding the central tendency of the panel. Our approach may mask the presence of within-country nonlinearities, which are washed out when looking at average effects. As recently suggested by Jaimovich and Rebelo (2012), the effects of taxation on growth may be highly nonlinear: marginal increases in tax rates have a small growth impact when tax rates are low or moderate, whereas the impact on growth may be large when tax rates are high. The empirical investigation of the link between tax structure and growth via investment in physical and human capital and the study of nonlinear effects of taxes is very relevant topic for future research.

Acknowledgments We thank Camilla Mastromarco and two anonymous referees for their comments and suggestions. All errors and omissions are ours.

Appendix 1: Computation of implicit tax rates

The following list provides the tax revenue data used in order to compute implicit tax rates. Using the OECD codes, we have:

- 1100 Taxes on income, profits, and capital gains of individuals or households;
- 1200 Taxes on income, profits, and capital gains of corporations;
- 2100 Social security contributions paid by employees;
- 2200 Social security contributions paid by employers;
- 2300 Social security contributions paid by the self-employed and persons outside of the labour force;
- 2400 Social security contributions unallocated;
- 3000 Taxes on payroll and workforce;
- 4000 Taxes on property;

- 5110 General taxes on goods and services;
- 5121 Excise taxes;
- 5122 Profits of fiscal monopolies;
- 5123 Customs and import duties;
- 5126 Taxes on specific services;
- 5128 Other taxes (among taxes on specific goods and service);
- 5200 Taxes on use of goods and performances;
- 6000 Other taxes;
- CP private final consumption expenditure;
- EE dependent employment;
- ES self-employment;
- CG government final consumption expenditure;
- OS net operating surplus of the overall economy;
- OSPUE unincorporated business net income (including imputed rentals on owner-occupied housing);
- PEI interest, dividends, and investment receipts;
- W wages and salaries of dependent employment;
- WSSS compensation of employees (including private employers' contributions to social security and to pension funds).

The implicit tax rate on consumption ITR_c is computed as:

$$ITR_c = \frac{(5110 + 5121 + 5122 + 5123 + 5126 + 5128 + 5200)}{(CP + CG)}$$

In order to compute implicit tax rates on labour and on capital, we first calculate the implicit tax rate on total household income (ITR_{hh}), the wage-bill for the self-employed (WSE), the share of labour income in household income (α), and, correspondingly, the share of capital income in household income ($1 - \alpha \equiv \beta$):

$$ITR_{hh} = \frac{1100}{(OSPUE + PEI + W)}$$

$$WSE = \frac{ES \cdot (W - 2100)}{EE}$$

$$\alpha = \frac{W}{OSPUE + PEI + W}$$

If social security contributions are not deductible, the implicit tax rates on capital and labour are computed as:

$$ITR_l = \frac{(ITR_{hh} \cdot (W + WSE) + 2100 + 2200 + 2300 + \alpha \cdot 2400 + 3000)}{(WSSS + WSE + 2300 + 3000)}$$

$$ITR_k = \frac{(ITR_{hh} \cdot (OSPUE + PEI - WSE) + \beta \cdot 2400 + 1200 + 4000)}{(OS - WSE - 2300 - 3000)}$$

If social security contributions are deductible, they are equal to:

$$ITR_l = \frac{(ITR_{hh} \cdot (W - 2100 + WSE - 2300 - \alpha \cdot 2400) + 2100 + 2200 + 2300 + \alpha \cdot 2400 + 3000)}{(WSSS + WSE + 2300 + 3000)}$$

$$ITR_k = \frac{(ITR_{hh} \cdot (OSPUE + PEI - WSE - \beta \cdot 2400) + \beta \cdot 2400 + 1200 + 4000)}{(OS - WSE - 2300 - 3000)}$$

For France and Italy, we make some adjustments to account for peculiar taxes that the OECD classifies in the residual category “other taxes” and that generate large revenues (i.e. Tax professionnelle and IRAP). Because their tax base includes both labour and capital, we split the revenues of these taxes between labour and capital according to the share α we defined before and add them to the numerator of the corresponding implicit tax rate.

Appendix 2: Descriptive statistics

See Table 6 and Figs. 1 and 2.

Table 6 Descriptive Statistics

Variables	Mean	Std. dev.	Min	Max
GDP per capita	3.587	0.294	2.548	4.308
Fixed investments	3.091	0.173	2.646	3.614
Human capital	2.345	0.175	1.739	2.598
Population growth	0.740	0.616	-0.981	4.729
Tax revenue/GDP	0.354	0.079	0.159	0.523
Implicit tax rate on consumption (ITR_c)	0.135	0.042	0.050	0.232
Implicit tax rate on labour (ITR_l)	0.290	0.092	0.094	0.503
Implicit tax rate on capital (ITR_k)	0.507	0.216	0.076	1.615
Consumption tax ratio (TR_c)	0.287	0.067	0.123	0.500
Labour tax ratio (TR_l)	0.485	0.068	0.260	0.645
Capital tax ratio (TR_k)	0.209	0.078	0.074	0.402
Trade share	0.031	0.030	0.001	0.216
Public expenditure	19.116	3.839	9.006	28.987

GDP per capita is the log of GDP in country i and at time t calculated as the ratio between GDP at constant prices and constant PPPs (in millions of US dollars) and the size of the working-age population (in thousands); fixed investment is the total gross fixed capital formation as a percentage of GDP; human capital is measured by the average years of schooling of the working-age population; population growth is the annual growth rate of the working-age population; tax revenue/GDP is the total tax revenue as percentage of GDP; implicit tax rates (ITR) are the ratios between the revenue derived from a particular type of tax and its potential base; tax ratios (TR) are the ratios between the revenue derived from a particular type of tax and total tax revenue; trade share is the ratio between the sum of exports and imports and GDP; public expenditure is the ratio between general government final consumption and GDP. Non-fiscal data come from OECD National Accounts, OECD Factbook (Economic, Environmental and Social Statistics), OECD Statistical Population, OECD Education at a Glance, Arnold et al. (2011a), OECD International Trade (MEI), and OECD Revenue Statistics; tax data come from OECD National Accounts, OECD Labour Force Statistics, and OECD Revenue Statistics. The 15 countries included in the panel data set are: Australia, Austria, Belgium, Canada, Finland, France, Greece, Italy, Japan, Netherlands, Norway, Spain, Sweden, the UK, and the USA. The observation period is 1965–2011

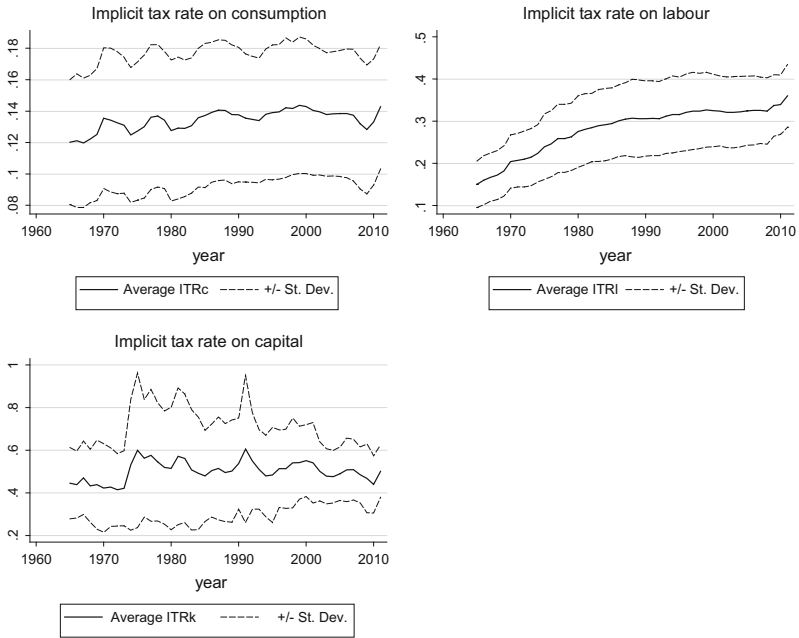


Fig. 1 Evolution of implicit tax rates

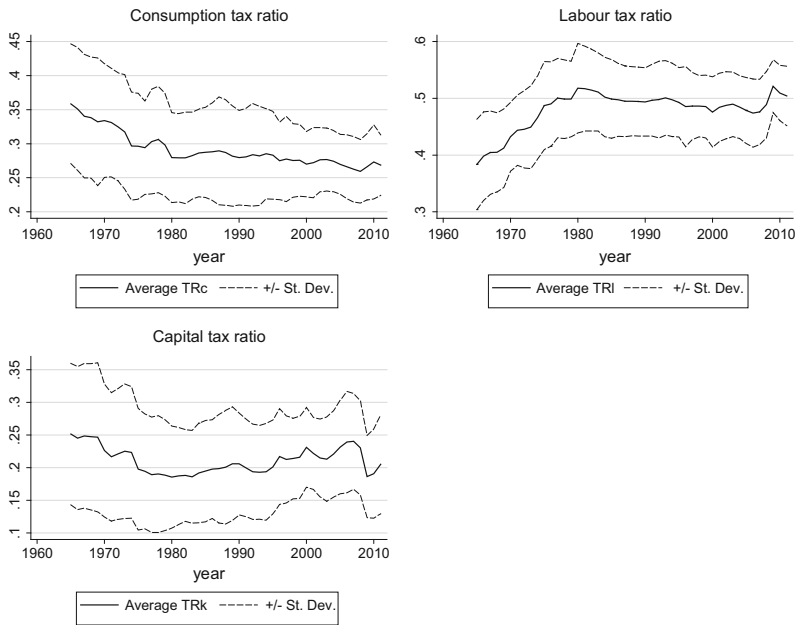


Fig. 2 Evolution of tax ratios

References

- Alworth, J., & Arachi, G. (2010). Taxation policy in EMU. In M. Buti, S. Deroose, V. Gaspar, & J. Nogueira Martins (Eds.), *Euro: The first decade* (pp. 557–596). Cambridge: Cambridge University Press.
- Andrews, D. W. K. (2005). Cross-section regression with common shocks. *Econometrica*, 73(5), 1551–1585.
- Arnold, J., Bassanini, A., & Scarpetta, S. (2011a). Solow or Lucas? Testing speed of convergence on a panel of OECD countries. *Research in Economics*, 65(2), 110–123.
- Arnold, J., Brys, B., Heady, C., Johansson, A., Schweltnus, C., & Vartia, L. (2011b). Tax policy for economic recovery and growth. *The Economic Journal*, 121, F59–F80.
- Bai, J. (2009). Panel data models with interactive fixed effects. *Econometrica*, 77(4), 1229–1279.
- Bleaney, M., Gemmell, N., & Kneller, R. (2001). Testing the endogenous growth model: Public expenditure, taxation and growth over the long run. *Canadian Journal of Economics*, 34, 36–57.
- Carey, D., & Tchilinguirian, H. (2000). Average effective tax rates on capital, labour and consumption. Economics Department Working Papers No. 258, OECD.
- Chudik, A., & Pesaran, M. H. (2013). Common correlated effects estimation of heterogeneous dynamic panel data models with weakly exogenous regressors. Federal Reserve Bank of Dallas Globalization and Monetary Policy Institute Working Paper No. 146.
- Chudik, A., Pesaran, M. H., & Tosetti, E. (2011). Weak and strong cross section dependence and estimation of large panels. *Econometrics Journal*, 14(1), C45–C90.
- D’Antoni, M., & Zanardi, A. (2011). Shifting the tax burden from labour income to consumption. *Rivista di Diritto Finanziario e Scienza delle Finanze*, 4, 493–513.
- De Mooij, R., & Keen, M. (2013). “Fiscal devaluation” and fiscal consolidation: The vat in troubled times. In A. Alesina & F. Giavazzi (Eds.), *Fiscal policy after the financial crisis* (pp. 443–485). Chicago: The University of Chicago Press.
- Eberhardt, M., & Presbitero, A.F. (2013). This time they are different: Heterogeneity and nonlinearity in the relationship between debt and growth. IMF Working Paper No. 248.
- European Commission (2012). Employment and social developments in Europe 2012. Publications Office of the European Union.
- European Commission (2013). Taxation trends in the European Union. Publications Office of the European Union.
- Farhi, E., Gopinath, G., & Itskhoki, O. (2014). Fiscal devaluation. *Review of Economic Studies*, 81(2), 725–760.
- Gemmell, N., Kneller, R., Sanz, I. (2013). The growth effects of tax rates in the OECD. Working Papers in Public Finance No. 2, Victoria Business School.
- Hausman, J. A. (1978). Specification tests in econometrics. *Econometrica*, 46(6), 1251–1271.
- Im, K., Pesaran, M. H., & Shin, Y. (2003). Testing for unit roots in heterogeneous panels. *Journal of Econometrics*, 115(1), 53–74.
- Jaimovich, N., & Rebelo, S. (2012). Non-linear effects of taxation on growth. National Bureau of Economic Research Working Papers No. 18473.
- Kapetanios, G., Pesaran, M. H., & Yamagata, T. (2011). Panels with nonstationary multifactor error structures. *Journal of Econometrics*, 160(2), 326–348.
- Kneller, R., Bleaney, M. F., & Gemmell, N. (1999). Fiscal policy and growth: Evidence from OECD countries. *Journal of Public Economics*, 74, 171–190.
- Martinez-Mongay, C. (2000). ECFIN’s effective tax rates. *Properties and comparisons with other tax indicators. European Commission Economic Paper No: 146*.
- Mendoza, E., Milesi-Ferretti, G. M., & Asea, P. (1997). On the ineffectiveness of tax policy in altering long run growth: Harberger’s superneutrality conjecture. *Journal of Public Economics*, 66, 99–126.
- Mendoza, E. G., Razin, A., & Tesar, L. L. (1994). Effective tax rates in macroeconomics: Cross-country estimates of tax rates on factor incomes and consumption. *Journal of Monetary Economics*, 34, 297–323.
- Myles G.D. (2009) Economic growth and the role of taxation-theory. OECD Economics Department Working Papers 713, OECD Publishing.
- OECD. (2008). Tax and economic growth. Economics Department Working Paper No. 620.
- OECD. (2010). *Going for growth 2010*. Paris: OECD Publishing.
- Pesaran, M. H. (2004). General diagnostic tests for cross section dependence in panels. Unpublished working paper.

- Pesaran, M. H. (2006). Estimation and inference in large heterogeneous panels with a multifactor error structure. *Econometrica*, 74(4), 967–1012.
- Pesaran, M. H., Shin, Y., & Smith, R. P. (1999). Pooled mean group estimation of dynamic heterogeneous panels. *Journal of the American Statistical Association*, 94(446), 621–634.
- Pesaran, M. H., & Tosetti, E. (2011). Large panels with common factors and spatial correlations. *Journal of Econometrics*, 161(2), 182–202.
- Phillips, P. C. B., & Sul, D. (2003). Dynamic panel estimation and homogeneity testing under cross section dependence. *Econometrics Journal*, 6(1), 217–259.
- Sonedda, D. (2009). The output effects of labor income taxes in OECD countries. *Public Finance Review*, 37(6), 686–709.
- Xing, J. (2012). Does tax structure affect economic growth? Empirical evidence from OECD countries. *Economics Letters*, 117(1), 379–382.