



Comparison of optimal buffer allocation in flow lines under installation buffer, echelon buffer, and CONWIP policies

George Liberopoulos¹

Published online: 5 March 2019

© Springer Science+Business Media, LLC, part of Springer Nature 2019

Abstract

We compare the optimal buffer allocation of a manufacturing flow line operating under three different production control policies: installation buffer (IB), echelon buffer (EB), and CONWIP (CW). IB is the conventional policy where each machine may store the parts that it produces only in its immediate downstream buffer if the next machine is occupied. EB is a more flexible policy where each machine may store the parts that it produces in any of its downstream buffers. CW is a special case of EB where the capacities of all buffers, except the last one, are zero. The optimization problem that we consider is to maximize the average gross profit (AGP) minus the average cost (AC), subject to a minimum average throughput constraint. AGP is defined as the average throughput of the line weighted by the gross marginal profit (selling price minus production cost per part), and AC is the sum of the average WIP plus total buffer capacity plus transfer rate of parts to remote buffers, weighted by the inventory holding cost rate, the cost of storage space, and the marginal cost of transferring parts to remote buffers, respectively. Numerical results show that the optimal EB policy generally outperforms the optimal IB and CW policies. They also show that as the production rates of the machines decrease, the relative advantage in performance of the EB policy over the other two policies increases. When the cost of transferring parts to remote buffers increases, the dominance of the EB policy over the IB policy decreases while the dominance of the EB policy over CW increases.

Keywords Flow line · Echelon buffer · CONWIP · Performance evaluation · Decomposition · Optimization · Lagrangean relaxation

✉ George Liberopoulos
glib@mie.uth.gr

¹ Department of Mechanical Engineering, University of Thessaly, Pedion Areos, 38334 Vólos, Greece

1 Introduction

The most common type of manufacturing system used in mass-production is the flow line. A flow line consists of machines in series that are visited sequentially by all parts. Often, the unpredictable variation in the processing times of the parts causes congestion and adversely affects the efficiency of the line. One of the ways of improving efficiency is to provide buffer space between the machines. With such space, if a machine stops, then the other machines can continue working undisturbed; without buffers, every machine is forced to work at the rate of the slowest machine.

Because buffers are expensive and occupy valuable space, it is important to use them as efficiently as possible. Recently, Liberopoulos (2018) considered a production control policy aimed at increasing the utilization of buffers by allowing each machine to store the parts that it produces in any of its downstream buffers, if the next machine is occupied. He referred to the ensemble of all the downstream buffers and the next machine as echelon buffer and to the resulting policy as echelon buffer (EB) policy. Under the EB policy, the buffers can contain parts that are in different stages of completion. In this case, it is not possible to evaluate the total buffer inventory in common units and to have a single unit cost for each buffer. Moreover, a machine is blocked from processing a part if the number of parts that have been processed by it but have not yet departed from the line is equal to the capacity of the echelon buffer following the machine. This means that the release of parts in each production stage is based on global information. If the capacity of each buffer except possibly the last one is zero, the EB policy is equivalent to CONWIP (henceforth, CW), as is explained in Liberopoulos (2018).

Liberopoulos (2018) juxtaposed the EB policy with the conventional production control policy in which each machine may store the parts that it produces only in its immediate downstream buffer if the next machine is unavailable. He referred to the ensemble of that buffer and the space in the next machine as installation buffer, and to the resulting policy as installation buffer (IB) policy. Under the IB policy, a machine is blocked from processing a part if the installation buffer downstream of it is full. In this case, the release of parts in each stage is based on local information.

Clearly, the utilization of buffer space under the EB policy is higher than it is under the IB policy. Consequently, the EB policy is expected to yield higher average throughput—at the cost of higher average WIP—than the IB policy. Moreover, the EB policy is expected to incur an additional transfer cost for storing parts to remote downstream buffers. Numerical results in Liberopoulos (2018) confirm these expectations. The question that we address in this paper is whether the benefit of the throughput increase under the EB policy outweighs the disadvantage of the WIP increase and transfer cost, also considering that a smaller total buffer space is needed under EB than under IB to achieve the same throughput level.

To answer this question, we consider a constrained optimization problem whose objective is to determine the optimal buffer sizes to maximize the average net profit (ANP) of the line subject to a minimum average throughput constraint, under any production control policy. ANP is defined as the average gross profit (AGP) minus

the average cost (AC), where AGP is the average throughput of the line weighted by the gross marginal profit (selling price minus production cost per part), and AC is the sum of the average WIP plus total buffer capacity plus transfer rate of parts to remote buffers, weighted by the inventory holding cost rate, the cost of storage space, and the marginal cost of transferring parts to remote buffers, respectively.

We numerically solve the constrained optimization problem for numerous instances of a 20-machine and an 8-machine line operating under the IB, EB, and CW policies. In all instances, we adopt the Bernoulli reliability model for the machines, i.e., we assume that the machines have geometrically distributed processing times. The Bernoulli reliability model leads to a simpler mathematical description than other models and is adequate for production systems where the downtime is short and comparable with the cycle time. The Bernoulli machine model has been successfully applied in many manufacturing system studies (e.g., Diamantidis and Papadopoulos 2004; Li and Meerkov 2000; Meerkov and Zhang 2008, 2011; Biller et al. 2009). The instances that we investigate differ in the production rates of the machines and the parameters of the constrained optimization problem. For the 20-machine line, these parameters are chosen randomly within a reasonable range. For the 8-machine line, they are chosen in a systematic way for sensitivity analysis.

To find the optimal buffer allocation for each instance under each policy, we use a two-phase optimization algorithm. Phase 1 is an adaptation of the two-step Lagrangean relaxation-type gradient algorithm presented in Shi and Gershwin (2009). Phase 2 is a simple neighborhood search that aims to improve the allocation obtained in phase 1 by adding, subtracting, or transferring a unit of storage capacity to one buffer at a time, on a trial basis. It only applies to the IB and EB policies where multiple buffer capacities must be optimized. Recall that in CW, only the capacity of the last buffer is optimized.

For each of the considered policies, the performance of the line for given buffer sizes is evaluated using an approximation method that is based on decomposing the original multiple-machine line into many 2-machine 1-buffer elementary lines that can be analyzed in isolation. The buffer in each elementary line represents one of the buffers in the original line, and the upstream and downstream machines represent in an aggregate way the segments of the original line that are upstream and downstream of that buffer. The parameters of these two machines are determined by relationships among the flows of parts through the buffers in the original line. The idea is to set these parameters so that the behavior of the buffer in each elementary line mimics as closely as possible the behavior of the buffer that it represents in the original line.

For the IB policy, we use a decomposition-based approximation method that is conceptually similar to the algorithm developed in Li and Meerkov (2009) for the Bernoulli machine case but is more elaborate than that algorithm as far as the modeling of the machines of the elementary lines is concerned. For the EB and CW policies, we employ the decomposition-based approximation method developed and specialized for the Bernoulli reliability model in Liberopoulos (2018). Using these methods, various performance measures of the line can be evaluated. The measures that are of interest for the purposes of the optimization are the average throughput,

the average WIP levels at each processing stage, and the average transfer rate of parts to remote buffers.

The main question that we try to answer in this paper is not whether the performance evaluation and optimization algorithms that we used are good or better than other algorithms, but whether the optimal EB policy outperforms the optimal IB and CW policies under different problem scenarios. The contribution of this paper, therefore, lies mainly in setting up the numerical study for the comparison of the three policies, carrying it out and obtaining and discussing the results, and to a much lesser extent in assessing the efficiency of the algorithms used to obtain the results.

The remainder of this paper is organized as follows. In Sect. 2, we review the related literature on the buffer allocation problem and on the comparison of different production policies. In Sect. 3, we describe the IB, EB, and CW policies. In Sect. 4, we give the formulation of the constrained optimization problem under consideration, and in Sect. 5, we present the algorithm that we use to solve it. In Sect. 6, we present the numerical results. First, we describe the setup of the numerical experiments that we run to compare the optimal IB, EB, and CW policies. Then, in Sect. 6.1, we present the results on the comparison of the optimal IB, EB, and CW policies, for a 20-machine line with randomly chosen input parameters. In Sect. 6.2, we present more results on the comparison of the optimal IB, EB, and CW policies, for an 8-machine line with systematically chosen input parameters for sensitivity analysis. Finally, we conclude in Sect. 7.

2 Literature review

The role of intermediate storage buffers in mitigating the adverse effect of process time variability on the efficiency of manufacturing flow lines has been researched for over five decades. Most of the issues that have been studied throughout these years fall into one of three areas: (1) modeling, (2) performance evaluation, and (3) optimization. A review of the first two areas can be found in Liberopoulos (2018) and references therein. Below, we briefly review the area of optimization.

One of the most widely researched problems in flow line optimization is the buffer allocation problem (BAP). BAP deals with allocating storage capacity to intermediate storage buffers to meet a given criterion under given constraints. In a recent survey on this topic, Demir et al. (2014) identified three main BAP variants. In one variant, which is often referred to as primal BAP in the literature, the goal is to minimize the total buffer size to achieve a given desired average throughput. In another variant, which is often referred to as dual BAP, the goal is to maximize the average system throughput for a given fixed total buffer size. In the third variant, the goal is to minimize the average system WIP subject to total buffer size and average throughput constraints. A more recent review of the BAP can be found in Weiss et al. (2018). According to Tempelmeier (2003), who raised important practical considerations in the optimization of flow production systems, planners normally treat average throughput as a datum and therefore usually consider the primal BAP variant.

Relatively recently, Shi and Gershwin (2009) considered an extension of the primal BAP whose objective is to maximize the average profit of the line subject to a given minimum average throughput constraint. The average profit is defined as the weighted average throughput of the system minus the sum of the weighted average WIP plus total buffer capacity. In this paper, we consider this variant except that we also include the weighted average transfer rate of parts to remote buffers as an additional cost term in the objective function. The resulting constrained problem is quite general and includes as special cases the unconstrained problem, when the minimum average throughput is zero, and the primal BAP, when the weights of the average throughput and the total buffer capacity in the objective function are zero. Note that the unconstrained problem has been studied for over 30 years (e.g., Kramer and Love 1970; Smith and Daskalaki 1988; Altioik 1997).

Demir et al. (2014) and Shi and Gershwin (2014) also categorized the BAP literature based on the search and performance evaluation techniques used. The search techniques include analytical methods (e.g., Enginarlar et al. 2005), DP (e.g., Diamantidis and Papadopoulos 2004), heuristics (e.g., Tempelmeier 2003) and metaheuristics (e.g., Spinellis et al. 2000), among others. In this paper, we employ an adaptation of the NLP gradient search technique that was used in Shi and Gershwin (2009). Previous works that also use gradient search for optimization and decomposition for performance evaluation include Gershwin and Schor (2000), Levantesi et al. (2001), and Helber (2001).

To date, performance evaluation and parameter optimization have been studied as separate problems for the most part. One exception is a recent stream of research that uses mathematical programming approaches for the simultaneous simulation and optimization of discrete event dynamic systems, based on the seminal work of Chan and Schruben (2008) (e.g., Helber et al. 2011; Alfieri and Matta 2012, 2013; Weiss and Stolletz 2015; Tan 2015).

As we wrote in the introduction, this paper is about comparing the optimal performance of three policies for operating flow lines. Most of the literature on the comparison of different production control policies has focused on systems where production is driven by demand for finished goods. Such systems are often referred to as pull systems. The two pull control policies that have appeared most frequently in such comparisons are kanban and CW. A kanban-controlled line is often viewed as being equivalent to a flow line with finite buffers, i.e., to the IB policy. There are also many researchers that view kanban as being equivalent to the minimal blocking (MB) policy (Mitra and Mitrani 1989), where each machine or workstation has an input buffer in addition to its output buffer (see Liberopoulos and Dallery 2000).

Framinan et al. (2003) presented a summary of papers addressing the comparison of CW with other policies and noted that the vast majority of papers concluded on the superiority of CW over kanban in both performance and robustness. The only authors that concluded differently were Gstettner and Kuhn (1996) who found that kanban achieves a given throughput with less WIP than CW.

Bonvik et al. (1997) compared five pull control policies for a 4-machine line with constant and time-varying deterministic demand rate. They considered the problem of minimizing total average inventory subject to a minimum service-level constraint. To evaluate the performance of each policy they used simulation. The policies that

they compared are kanban, MB, basestock, CW and a kanban/CW hybrid control policy introduced in Van Ryzin et al. (1993). They found that the kanban/CW hybrid policy had superior performance, closely followed by CW and basestock. It is worth noting that their definitions of the kanban and basestock coincide with the definitions of the IB and EB policies, respectively. The kanban/CW hybrid is essentially an IB policy where the release of parts in the line is controlled with a CW loop.

Gaury et al. (2000) designed a generic control system that combines the features of kanban, CW and hybrid kanban/CW, and proposed a simulation-based evolutionary algorithm for selecting the best combined policy. Their numerical results on three examples with 6, 8, and 10 machines showed that for the problem of minimizing average WIP subject to a minimum service-level constraint, the best policy is a simplified kanban/CW policy.

Koukourmialos and Liberopoulos (2005) developed an analytical approximation method for the performance evaluation of a multi-stage production inventory system operated under an echelon kanban (EK) policy, which, as explained in Liberopoulos (2018), is similar to but not identical to the EB policy. The main difference between the two policies is that EK considers a system of manufacturing stages instead of machines, where each stage may be a single machine or a network of machines and has an input buffer in addition to its output buffer. They used their method to optimize the EK policy and compare it against CW, which is a special case of the EK policy. They considered a constrained optimization problem whose objective is to minimize the WIP plus finished goods inventory holding cost subject to a service level constraint (they considered two different service level definitions), where the inventory holding costs are increasing in the stages. Their numerical results for a 5-machine line showed that the superiority in performance of the EK policy over the CW policy can be quite significant, particularly when the relative increase in inventory holding costs from one stage to the next downstream stage is high and/or the quality of service is low.

Finally, Lavoie et al. (2010) optimized and compared kanban, CW, and hybrid kanban/CW policies for lines with 4 to 7 machines, using simulation, design of experiments, and response surface methodology. The performance measure that they used for the optimization was the weighted average inventory, backlog, and storage space cost. They found that the hybrid policy always outperforms CW and kanban when storage space and inventory costs are considered explicitly. However, the hybrid policy turns out to be equivalent to CW when storage space costs are not considered explicitly but are aggregated with the inventory costs in the holding costs. Furthermore, with the increase of storage space cost and the number of machines, kanban outperforms CW.

From the above analysis, to the best of our knowledge, the only papers that compare the EB policy against other policies are Bonvik et al. (1997) and Koukourmialos and Liberopoulos (2005). The latter paper compares the EK policy (which is similar to EB) against CW but not against the kanban policy, which is identical or similar to IB, depending on its definition. Both papers solve a simple optimization problem whose objective is to minimize the inventory holding costs subject to a minimum service-level constraint for demand-driven production lines with up to 5 machines. Both papers investigate a limited number of scenarios

concerning the values of the problem parameters. In our numerical study, we consider a different optimization problem whose objective is to maximize the ANP subject to a minimum average throughput constraint. In addition to the inventory holdings costs, which are generally assumed to be increasing in the stages, we also consider the cost of buffer space and the cost of transferring parts to remote buffers. Our study is performed on larger lines with 8 machines and 20 machines and for a very large number of problem instances. For the 20-machine line with randomly chosen input parameters, we report results for 80 instances. For the 8-machine line with systematically chosen input parameters for sensitivity analysis, we report results for 396 parameter scenarios.

3 Description of IB, EB, and CW policies

We consider a flow line consisting of N machines in series denoted by $M_n, n = 1, \dots, N$, with $N - 1$ finite intermediate buffers denoted by $B_n, n = 1, \dots, N - 1$. Parts are processed sequentially by all the machines, starting at M_1 and finishing at M_N . Time is broken in discrete periods. In each period, machine $M_n, n = 1, \dots, N$, produces a part with probability p_n unless it is starved or blocked; hence, the processing time of a part on machine M_n is geometrically distributed with mean $1/p_n$. Probability p_n is referred to as the production probability or rate of machine M_n in isolation. Every machine has unit capacity, while the capacity of buffer B_n is denoted by $C_n, n = 1, \dots, N - 1$.

The union of B_n and M_{n+1} constitutes the installation buffer following M_n . Its capacity is $1 + C_n$. The number of parts that have been processed by M_n but have not yet departed from the next machine, M_{n+1} , is referred to as the installation WIP following M_n and is denoted by i_n . The union of B_n, \dots, B_{N-1} , and M_{n+1} constitutes the echelon buffer following M_n . Its capacity is $1 + \sum_{m=n}^{N-1} C_m$. The number of parts that have been processed by M_n but have not yet departed from the last machine, M_N , is referred to as the echelon WIP following M_n and is denoted by e_n . With the above notation in mind, the IB, EB, and CW policies are defined as follows (see also Liberopoulos 2018):

Definition 1 (*IB policy*) In a flow line with N machines and $N - 1$ intermediate buffers with capacities $C_n, n = 1, \dots, N - 1$, under the IB policy, machine $M_n, n = 1, \dots, N - 1$, releases the parts that it produces to installation buffer $B_n \cup M_{n+1}$, and is blocked from processing a part if $i_n = 1 + C_n$.

Figure 1 shows a flow line with $N = 4$ machines operated under IB. The different line-types of the arrows indicate the flow of parts between different machines. For instance, the solid-line arrows indicate the flow of parts that have been processed by machine M_2 but have not yet been processed by machine M_3 . These parts can be stored only in buffer B_2 .

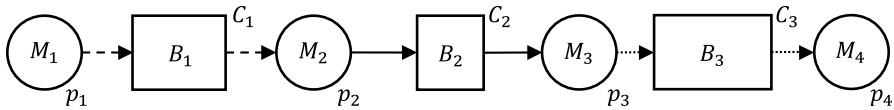


Fig. 1 Flow line operated under an IB policy

Definition 2 (*EB policy*) In a flow line with N machines and $N - 1$ intermediate buffers with capacities $C_n, n = 1, \dots, N - 1$, under the EB policy, machine $M_n, n = 1, \dots, N - 1$, releases the parts that it produces to echelon buffer $B_n \cup \dots \cup B_{N-1} \cup M_{n+1}$, and is blocked from processing a part if $e_n = 1 + \sum_{m=n}^{N-1} C_m$.

Figure 2 shows the 4-machine flow line of Fig. 1 operated under an EB policy. Again, the different line-types of the arrows indicate the flow of parts between different machines. As in Fig. 1, the solid-line arrows indicate the flow of parts that have been processed by machine M_2 but have not yet been processed by machine M_3 . These parts can be stored either in buffer B_2 or in buffer B_3 .

If the capacities of all intermediate buffers, except possibly the last one, are zero (i.e., if $C_n = 0, n = 1, \dots, N - 2$, and $C_{N-1} \geq 0$), then under the EB policy, machine $M_n, n = 1, \dots, N - 1$, can store the parts that it produces in the last and only buffer B_{N-1} if M_{n+1} is occupied. To simplify notation, we denote this buffer by B and its capacity by C , i.e., $B \equiv B_{N-1}$ and $C = C_{N-1}$. It is easy to see that in this case, M_1 is blocked from processing a part if $e_1 = 1 + C$ and that no other machine can ever be blocked. This way of operation is identical to the operation of CW where parts are not allowed to be released into the system if the total WIP is at the WIP-cap (Spearman et al. 1990). For the purposes of this paper, we will henceforth use the following definition for CW:

Definition 3 (*CW policy*) In a flow line with N machines and $N - 1$ intermediate buffers with capacities $C_n = 0, n = 1, \dots, N - 2$, and $C_{N-1} = C \geq 0$, the EB policy is equivalent to a CW policy with a WIP-cap of $1 + C$.

Figure 3 depicts the 4-machine flow line of Figs. 1 and 2 operated under CW, where the last buffer is shown as a common storage area on the side of the machines.

To analyze the operation of a flow line under the EB policy, Liberopoulos (2018) modelled it as a token-based queueing network and developed a

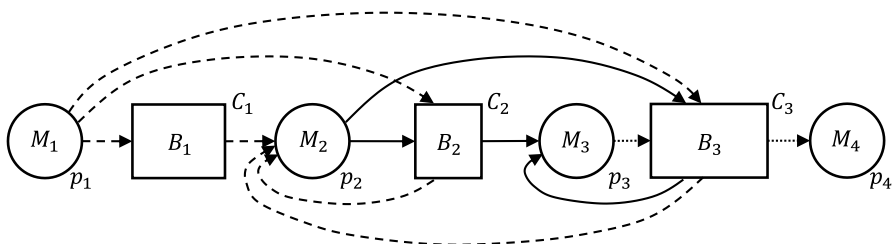
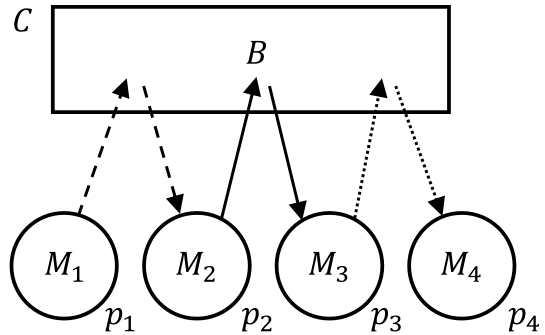


Fig. 2 Flow line operated under an EB policy

Fig. 3 Flow line operated under a CW policy



decomposition-based approximation method for evaluating its performance. This network consists of the N machines of the line, M_1, \dots, M_N , separated by $N - 1$ infinite capacity buffers, denoted by Y_1, \dots, Y_{N-1} , as shown in Fig. 4, for $N = 4$. The number of parts in buffer $Y_n, n = 1, \dots, N - 1$, including the part in machine M_{n+1} , is referred to as the stage WIP following M_n and is denoted by y_n ; y_n represents the number of parts that have been produced by M_n but have not yet departed from M_{n+1} . As was mentioned earlier, in the physical system shown in Fig. 2, these parts may reside anywhere in echelon buffer $B_n \cup \dots \cup B_{N-1} \cup M_{n+1}$.

When a part flows from machine M_n to buffer Y_n , a token is generated and is placed in an associated finite buffer denoted by $E_n, n = 1, \dots, N - 1$. The capacity of E_n is equal to $1 + \sum_{m=n}^{N-1} C_m$, i.e., it is equal to the capacity of echelon buffer $B_n \cup \dots \cup B_{N-1} \cup M_{n+1}$ following $M_n, n = 1, \dots, N - 1$, in the physical line shown in Fig. 2. The long vertical line at the end of the system in Fig. 4 represents a synchronization station that synchronizes parts exiting the line with tokens from buffers $E_n, n = 1, \dots, N - 1$. More specifically, when a part is produced by machine M_N , it draws a token from each of buffers E_1, \dots, E_{N-1} . The finished part departs from the line, and the tokens are discarded. Clearly, the number of tokens

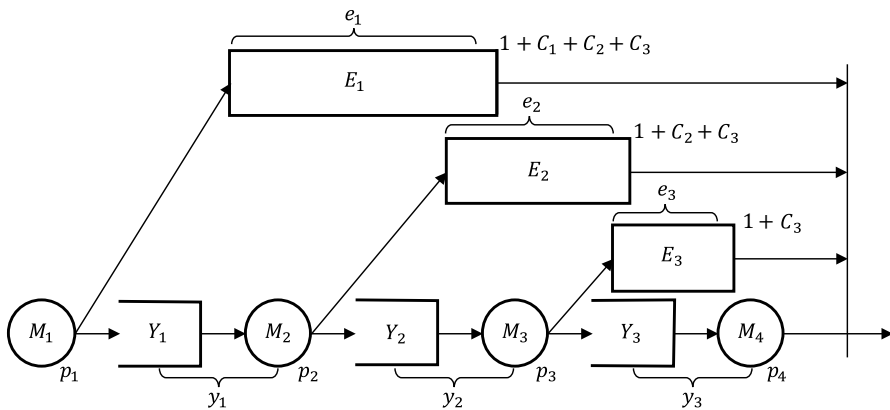


Fig. 4 Queuing network model of a flow line operated under an EB policy

in E_n equals the echelon WIP downstream of $M_n, n = 1, \dots, N - 1$, in the physical line shown in Fig. 2; it is therefore denoted by e_n . The echelon WIP and the stage WIP levels are related as follows:

$$e_n = \sum_{m=n}^{N-1} y_m, n = 1, \dots, N - 1;$$

To further clarify the difference between the EB and IB policies, Fig. 5 shows a token-based queuing network model of a flow line operated under IB which is analogous to the model of the EB policy in Fig. 4. In the IB model, when a part flows from machine M_n to buffer Y_n , a token is generated and is placed in an associated finite buffer denoted by $I_n, n = 1, \dots, N - 1$. When a part is produced by machine M_{n+1} , it draws a token from buffer I_n . The capacity of I_n is equal to $1 + C_n$, i.e., it is equal to the capacity of installation buffer $B_n \cup M_{n+1}$ following $M_n, n = 1, \dots, N - 1$, in the physical line shown in Fig. 1. The part moves further downstream the line, and the token is discarded. Clearly, the number of tokens in I_n equals the installation WIP downstream of $M_n, n = 1, \dots, N - 1$; it is therefore denoted by i_n . Note that in the IB policy, the stage WIP levels are identical to the installation WIP levels, i.e.,

$$y_n = i_n, n = 1, \dots, N - 1.$$

To evaluate the performance of the EB policy, Liberopoulos (2018) developed an approximation method that is based on: (1) decomposing the original queuing network model of the line with N machines and $N - 1$ echelon buffers (see Fig. 4) into $N - 1$ nested segments, and (2) approximating each segment with a 2-machine subsystem that can be analyzed in isolation. For the case where the machines have geometrically distributed processing times, each subsystem is modelled as a 2D Markov chain that is solved numerically. The parameters of the 2-machine subsystems are determined by relationships among the flows of parts through the echelon buffers in the original system. These relationships are solved using an iterative algorithm. Liberopoulos (2018) demonstrated that this method is highly accurate and computationally efficient. In this paper, we use the same method to evaluate the performance of the EB and CW policies.

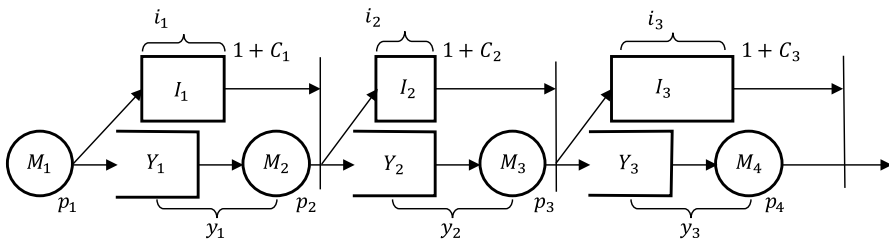


Fig. 5 Queuing network model of a flow line operated under an IB policy

4 Formulation of the buffer allocation problem

We consider an optimization problem similar to that presented in Shi and Gershwin (2009). The objective is to determine the buffer sizes of a flow line to maximize the average net profit of the line subject to a minimum throughput constraint, for the three considered policies, namely, IB, EB, and CW. The average net profit is defined as the weighted average throughput of the line minus the average cost. The latter is defined as the sum of the weighted average WIP plus total buffer capacity plus transfer rate of parts to remote downstream buffers. The mathematical formulation of the problem is as follows:

$$\begin{aligned}
 \max_{C_1, \dots, C_{N-1}} P(C_1, \dots, C_{N-1}) &= r v(C_1, \dots, C_{N-1}) \\
 &- \left(\sum_{n=1}^{N-1} h_n \bar{y}_n(C_1, \dots, C_{N-1}) + b \sum_{n=1}^{N-1} C_n + t \sum_{n=1}^{N-2} \theta_n(C_1, \dots, C_{N-1}) \right) \tag{1}
 \end{aligned}$$

subject to $v(C_1, \dots, C_{N-1}) \geq v_{min}$, (2)

where we have used the following notation:

- $P(C_1, \dots, C_{N-1})$: average net profit of the line as a function of C_1, \dots, C_{N-1} (\$ per unit time);
- $v(C_1, \dots, C_{N-1})$: average throughput of the line as a function of C_1, \dots, C_{N-1} (parts per unit time);
- $\bar{y}_n(C_1, \dots, C_{N-1})$: average value of stage WIP $y_n, n = 1, \dots, N - 1$, as a function of C_1, \dots, C_{N-1} (parts);
- $\theta_n(C_1, \dots, C_{N-1})$: overflow rate of stage WIP buffer Y_n , as a function of C_1, \dots, C_{N-1} ; (parts per unit time)—to be defined shortly;
- r : gross profit rate per final part produced by the line (\$ per part);
- h_n : inventory holding cost rate of parts comprising stage WIP $y_n, n = 1, \dots, N - 1$ (\$ per part per unit time);
- b : cost rate of storage space (\$ per storage space for one part per unit time);
- t : cost rate of transferring parts to remote buffers (\$ per part transferred to a remote buffer);
- v_{min} : minimum required average throughput (parts per unit time).

The overflow rate θ_n is defined as the joint probability that machine M_n produces a part and $y_n \geq C_n + 1$. It represents the flow rate of parts that are produced by M_n and are transferred for storage to a remote downstream buffer, i.e., a buffer which is different from B_n , because B_n is full (hence the term “overflow”). Recall that under the IB policy, parts are never transferred for storage to remote downstream buffers but are stored locally. In this case, $\theta_n = 0, n = 1, \dots, N - 1$. Under the EB and CW policies, on the other hand, the overflow rates of all stage WIP buffers except Y_{N-1} are positive, i.e., $\theta_n > 0, n = 1, \dots, N - 2$, and $\theta_{N-1} = 0$. The overflow rate of Y_{N-1} is zero, because the parts in it represent parts that have been produced by machine M_{N-1} but have not yet departed from machine M_N in the physical system. These parts can only be stored

locally in the immediate downstream buffer B_{N-1} and not in any other remote buffer in the physical system.

5 Optimization algorithm for solving the buffer allocation problem

Problem (1)–(2) is a constrained non-linear integer optimization problem. To solve it, we use the following two-phase optimization algorithm.

Phase 1 Phase 1 is an adaptation of the two-step gradient algorithm presented in Shi and Gershwin (2009). That algorithm is basically an implementation of the Lagrange multiplier method for solving non-linear constrained optimization problems.

Step 1 of phase 1 In step 1, we solve problem (1)–(2) without taking into account constraint (2). This problem is referred to as the unconstrained problem. To solve this problem, we use the following iterative “gradient-like” technique.

We start with an initial design where all buffer capacities are zero, i.e., $C_n = 0, n = 1, \dots, N - 1$. In each iteration, given the current design C_1, \dots, C_{N-1} and the corresponding average net profit $P(C_1, \dots, C_{N-1})$, we compute the increase in the average net profit that would result if we incremented the value of C_n by one unit to $C_n + 1$, for each $n = 1, \dots, N - 1$.

If the increase in the average net profit is negative for all $n = 1, \dots, N - 1$, then there are no more gains to make by incrementing the buffer capacities one at a time; therefore, we stop and keep the current design as the final one for the unconstrained problem.

Otherwise, we update the current design to a new design in which the capacity of the intermediate buffer that yielded the largest increase in the average net profit is incremented by one unit and all other capacities remain the same, and we move on to the next iteration.

If the final solution of the unconstrained problem solved in step 1 satisfies constraint (2), then it is also the final solution of the constrained problem (1)–(2); hence, we keep it as the final design of phase 1 and move on to phase 2. Otherwise, we proceed to step 2.

Step 2 of phase 1 Step 2 is implemented if the final solution of the unconstrained problem solved in step 1 violates constraint (2). In this case, if the decision variables $C_n, n = 1, \dots, N - 1$, were continuous, making $v(C_1, \dots, C_{N-1})$ continuous too, the constraint would be binding at the optimal solution. Because the buffer capacities are discrete, $v(C_1, \dots, C_{N-1})$ increases in jumps, and it is unlikely that any of its values exactly equal v_{min} . In this case, the optimal buffer capacities are the smallest values of $C_n, n = 1, \dots, N - 1$, such that $v(C_1, \dots, C_{N-1}) \geq v_{min}$. To find them, we introduce a Lagrange multiplier λ and try to solve the following modified unconstrained problem:

$$\begin{aligned} \max_{C_1, \dots, C_{N-1}, \lambda} P(C_1, \dots, C_{N-1}, \lambda) = & rv(C_1, \dots, C_{N-1}) \\ & - \left(\sum_{n=1}^{N-1} h_n \bar{y}_n(C_1, \dots, C_{N-1}) + b \sum_{n=1}^{N-1} C_n + t \sum_{n=1}^{N-2} \theta_n(C_1, \dots, C_{N-1}) \right) \\ & + \lambda(v(C_1, \dots, C_{N-1}) - v_{min}), \end{aligned}$$

which is equivalent to:

$$\max_{C_1, \dots, C_{N-1}, \lambda} P(C_1, \dots, C_{N-1}, \lambda) = r'v(C_1, \dots, C_{N-1}) - \left(\sum_{n=1}^{N-1} h_n \bar{y}_n(C_1, \dots, C_{N-1}) + b \sum_{n=1}^{N-1} C_n + t \sum_{n=1}^{N-2} \theta_n(C_1, \dots, C_{N-1}) \right), \tag{3}$$

where r' is a modified gross profit rate, given by:

$$r' = r + \lambda. \tag{4}$$

To solve problem (3) in step 2, we use the following iterative technique.

We start with the initial design where all buffer capacities are set equal to the values of the final design of phase 1 and $r' = r$, which from (4) implies that $\lambda = 0$.

In each iteration, we slightly increment the value of the gross profit rate r' and resolve the modified unconstrained problem (3) with the incremented value of r' . Essentially, by increasing r' , we are increasing the Lagrange multiplier λ introduced in (3), since $\lambda = r' - r$ from (4).

If the final solution of the modified unconstrained problem (3) with the new value of r' satisfies constraint (2), then it is also the solution of the original constrained problem (1)–(2); hence, we keep it as the final design of phase 1 and move on to phase 2. Otherwise, we increment the value of r' again and repeat the process until the solution of problem (3) with the updated value of r' satisfies constraint (2). The resulting design solves the constrained problem too, and so we keep it as the final design of phase 1. To evaluate the average net profit that this design yields we use the original value of r in (1). We then move on to phase 2.

A block diagram of phase 1 is shown in Fig. 6, where we have used the following notation:

$\mathbf{C} = (C_1, \dots, C_{N-1})$: $(N - 1)$ -element vector of current buffer capacities;

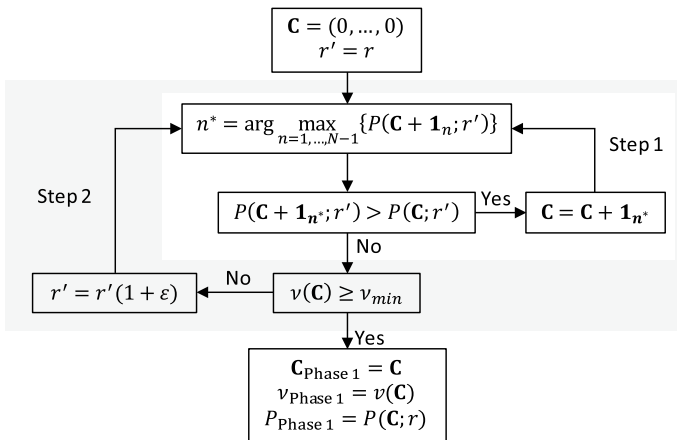


Fig. 6 Block diagram of phase 1 of the optimization algorithm

$\mathbf{1}_n = (0, \dots, \underbrace{1}_{n\text{th position}}, \dots, 0)$: $(N - 1)$ -element vector with 1 in position n and

zeros elsewhere, $n = 1, \dots, N - 1$

$P(\mathbf{C}; r')$: Average net profit as a function of buffer capacity vector \mathbf{C} for given modified gross profit rate r' ;

$v(\mathbf{C})$: Average throughput as a function of buffer capacity vector \mathbf{C} ;

ε : A very small positive number, e.g., $\varepsilon = 0.01$.

Phase 2 Phase 2 is a simple iterative neighborhood search that tries to improve the solution obtained in phase 1. Throughout phase 2, we use the original gross profit rate r in (1). In each iteration, given the current design C_1, \dots, C_{N-1} and the corresponding average net profit $P(C_1, \dots, C_{N-1})$, we compute the increase in the average net profit that would result if we made the following perturbations to the buffer capacities: (1) decrement the value of C_n by one unit to $C_n - 1, n = 1, \dots, N - 1$, (2) increment the value of C_n by one unit to $C_n + 1, n = 1, \dots, N - 1$, and (3) transfer one unit of capacity from buffer C_n to buffer $C_m, n = 1, \dots, N - 1, m = 1, \dots, N - 1, m \neq n$.

If the increase in the average net profit is negative for all the above perturbations, then there are no more gains to make by perturbing the buffer capacities; therefore, we stop and keep the current design as the final one.

Otherwise, we update the current design to the perturbed design that yielded the highest increase in average profit and we move on to the next iteration.

Although the optimization problem that we consider is similar to the problem considered in Shi and Gershwin (2009), there are several differences between our work and the work of Shi and Gershwin.

Firstly, in the line that we consider, the machines have geometrically distributed processing times, whereas in the line that Shi and Gershwin consider, the machines have unit production times and geometrically distributed up times and downtimes.

Moreover, Shi and Gershwin study only the traditional IB policy, whereas we also consider the alternative EB policy and its special case, CW. Because the transferring of parts to remote buffers does not apply to the IB policy, Shi and Gershwin do not include in the objective function the weighted average transfer rate of parts to remote buffers, $t \sum_{n=1}^{N-2} \theta_n (C_1, \dots, C_{N-1})$, whereas we consider it for the EB and CW policies.

Finally, we treat the buffer capacities as integers. Throughout the optimization method, we move in the direction the steepest ascent of the average net profit, by making the smallest possible step, to be on the safe side, as the focus of our work is not to assess the efficiency of the optimization algorithm but to compare the optimal performance of the three considered policies. Namely, in each iteration of step 1 of phase 1, we increment the capacity of only one buffer (the buffer that yields the highest increase in profit) by only one unit. Similarly, in each iteration of phase 2, we decrement or increment the capacity of one buffer by one unit or we transfer one unit of capacity from one buffer to another.

Shi and Gershwin, on the other hand, employ an approximation method that allows them to treat the buffer capacities as continuous variables. Hence, in the optimization, they use a classical gradient method where in each iteration they modify the capacities of all buffers in the direction that yields the steepest ascent in the objective function. The goal of their work is to demonstrate the accuracy and efficiency of this method. Moreover, they do not have the equivalent of phase 2 for improving the solution obtained in phase 1; at the end of the two-step method (phase 1) they simply round the final continuous buffer capacity solutions to the closest integers.

Shi and Gershwin (2009) point out that the method that they use—as any gradient method—is based on the assumption that the net average profit is concave and has a single maximum. They cite several references that substantiate this assumption for similar lines based on numerical evidence and intuition. In their conclusions, they write that the rigorous proof of this assumption is an issue for future research.

In our work we also assume that the net average profit is concave and has a single maximum, for the classical IB policy. For the EB policy, we run some additional numerical tests that validate this assumption. More specifically, for a selected set of the instances of problem (1)–(2) that we solved for the 8-machine line, we rerun the iterative two-phase optimization algorithm, except that this time, for each design that we evaluated, we also computed the Hessian matrix of partial derivatives of the average net profit with respect to the buffer capacities. In all cases, all the eigenvalues of this matrix turned out to be negative. This indicates that the Hessian matrix is negative definite, and therefore the net average profit is concave for all the design points that we evaluated. The results of these tests are presented in “Appendix 1”.

6 Numerical results

We used the algorithm outlined in the previous section to solve problem (1)–(2) for numerous instances of a 20-machine and an 8-machine flow line, operating under the IB, EB, and CW policies. The instances differ in the production rates of the machines, $p_n, n = 1, \dots, N$, and in the main parameters of optimization problem (1)–(2), namely, $r, b, t, h_n, n = 1, \dots, N$, and v_{min} . These parameters depend on the production costs of the line, the interest rate and profit margin used by the firm that runs the line, and other problem parameters which we refer to as “basic”. To choose realistic and reasonable values for the main optimization parameters we used the following basic parameters:

c_0 : cost per raw-material part (\$ per part).

c_n : total cost per part produced by machine $M_n, n = 1, \dots, N - 1$, (\$ per part).

c_N : total cost per finished part exiting the line (\$ per part).

I_c : value-added rate per production stage as a percentage of c_0 (\$ per \$). A value of $I_c = 0.5$ means that processing at machine M_n adds a cost (value) equal to 50% of c_0 to each part, i.e., $c_n = c_{n-1} + I_c c_0, n = 1, \dots, N$.

I_h : interest rate of capital (\$ per \$ per unit time).

I_r : gross profit margin (\$ per \$) defined as follows: $I_r = (s - c_N)/c_N$, where s is the selling price per finished part (\$ per part). A value of $I_r = 0.1$ means that the selling price of a finished part is 10% higher than the total cost of the part, c_N .

I_b : buffer capacity cost rate defined as a multiple of inventory holding cost rate h_1 (parts per storage space). A value of $I_b = 2$ means that the per period “rental” cost of space for storing one part in an intermediate buffer is equal to the cost of holding two parts in stage-1 WIP inventory for one period.

I_t : transfer cost rate as a multiple of raw material cost c_0 . A value of $I_t = 0.01$ means that the cost of transferring a part to a remote installation buffer and back is 1% of c_0 .

I_v : minimum required flow line efficiency. A value of $I_v = 0.8$ means that v_{min} is 80% of the production probability (rate) of the slowest machine in isolation.

Based on the above definitions, the total cost per part in stage n , $c_n (n = 1, \dots, N)$, and parameters $r, b, t, h_n, n = 1, \dots, N$, and v_{min} in optimization problem (1)–(2) are computed as follows:

$$c_n = c_{n-1} + I_c c_0 = c_0(1 + nI_c), n = 1, \dots, N, \tag{5}$$

$$h_n = I_h c_n = I_h c_0(1 + nI_c), n = 1, \dots, N - 1, \tag{6}$$

$$r = I_r c_N = I_r c_0(1 + NI_c), \tag{7}$$

$$b = I_b h_1 = I_b I_h c_1 = I_b I_h c_0(1 + I_c), \tag{8}$$

$$t = I_t c_0, \tag{9}$$

$$v_{min} = I_v \min_{n=1, \dots, N} \{p_n\}. \tag{10}$$

In all instances of the 20-machine line that we investigated, we randomly chose different values for the production rates of the machines and the basic variables $c_0, I_c, I_h, I_r, I_b, I_t$, and I_v . In the instances of the 8-machine line, these values were chosen in a structured way because we wanted to perform a more systematic sensitivity analysis. In both cases, the chosen production rates and basic variables were then used to determine the values of the optimization parameters r, b, t, v_{min} , and $h_n, n = 1, \dots, N - 1$, in problem (1)–(2) from expressions (5)–(10). All instances were run on a PC with an Intel(R) Core(TM) i3-7100U CPU @ 2.40 GHz with 4.00 GB RAM. The input parameters and the results for both the 20-machine and the 8-machine line instances are presented in the next sections.

6.1 20-Machine line with randomly chosen input parameters

For the 20-machine line example, we considered 80 different instances. In each instance, the values of the production rates of the machines, $p_n, n = 1, \dots, N$, and the basic parameters I_c, I_h, I_r, I_b, I_v , and I_t were chosen randomly from a uniform distribution over a given interval. The value of c_0 was equal to 100 in all instances.

Table 1 shows the range of values for each parameter, and Table 2 shows the randomly generated parameter values for the first 40 instances. The parameter values for the remaining 40 instances are shown in Table 23 in “Appendix 2”, for space considerations.

Table 3 shows the optimization results for the first 40 instances. The optimization results for instances 41–80 are shown in Table 24 in “Appendix 2”. Each row in Table 3 (and Table 24) shows the instance number, the optimal buffer sizes ($C_1^* - C_{19}^*$ for the IB and EB policies and C^* for the CW policy), the maximum profit P^* , the computational time in minutes (cpu), and the number of iterations of steps 1 and 2 of phase 1 and of phase 2 of the optimization algorithm, for each policy (iter). The last two elements ($\% \Delta P^*$) show the percent gain in the net average profit of the optimal EB policy w.r.t. the optimal IB policy (E–I) and w.r.t. the optimal CW policy (E–C). These gains are computed as follows:

$$\% \Delta P^*(E-I) = \frac{P_{EB}^* - P_{IB}^*}{|P_{IB}^*|} \times 100, \tag{11}$$

$$\% \Delta P^*(E-C) = \frac{P_{EB}^* - P_{CW}^*}{|P_{CW}^*|} \times 100. \tag{12}$$

We should note that once we run all 80 instances, we renumbered them as follows. First, we sorted instances 1–80 in decreasing order of E–I values. We kept the first 20 sorted instances and renumbered them as 1–20. Then, we resorted the remaining instances 21–80 in decreasing order of E–C values. We kept the first 20 resorted instances and renumbered them as 21–40. Next, we resorted instances 41–80 in decreasing order of E–I values. Again, we kept the first 20 resorted instances and renumbered them as 41–60. Finally, we resorted the last 20 remaining instances in decreasing order of E–C values and renumbered them 61–80. Tables 2, 3, 23, and 24 show the input data and the results for the renumbered instances.

Note that in a few instances the profit is negative for one or more policies, because the gross profit margin is not high enough to cover the costs. Table 4

Table 1 Range of values of the basic input parameters for the 20-machine line

Parameter	Type	Range of values
$p_n, n = 1, \dots, N$	Random (uniform)	[0.2, 0.8]
c_0	Deterministic	100
I_c	Random (uniform)	[0.1, 2]
I_h	Random (uniform)	[0.001, 0.005]
I_r	Random (uniform)	[0.20, 5]
I_b	Random (uniform)	[0.5, 2]
I_v	Random (uniform)	[0.6, 0.9]
I_t	Random (uniform)	[0.1, 2]

Table 2 Values of production rates $P_n, n = 1, \dots, N$, and basic parameters I_c, I_b, I_r, I_v, I_t for instances 1–40 of the 20-machine line

#	P_1	P_2	P_3	P_4	P_5	P_6	P_7	P_8	P_9	P_{10}	P_{11}	P_{12}	P_{13}	P_{14}	P_{15}	P_{16}	P_{17}	P_{18}	P_{19}	P_{20}	I_c	I_b	I_r	I_v	I_t	
1	0.42	0.38	0.49	0.79	0.76	0.49	0.48	0.62	0.69	0.29	0.46	0.47	0.27	0.21	0.59	0.28	0.75	0.27	0.46	0.20	1.5	0.005	0.28	1.7	0.63	0.015
2	0.53	0.50	0.64	0.31	0.30	0.39	0.49	0.33	0.71	0.45	0.34	0.48	0.29	0.63	0.42	0.46	0.31	0.66	0.48	0.38	1.7	0.005	0.24	1.4	0.70	0.003
3	0.64	0.74	0.27	0.20	0.77	0.28	0.34	0.79	0.43	0.68	0.67	0.23	0.59	0.41	0.37	0.74	0.27	0.27	0.71	0.26	0.9	0.005	0.22	1.4	0.80	0.007
4	0.32	0.51	0.65	0.69	0.42	0.63	0.39	0.31	0.54	0.61	0.53	0.36	0.65	0.20	0.30	0.45	0.45	0.73	0.27	0.24	0.7	0.005	0.32	1.8	0.61	0.005
5	0.30	0.60	0.44	0.52	0.45	0.57	0.69	0.47	0.67	0.27	0.61	0.66	0.54	0.70	0.61	0.69	0.31	0.29	0.41	0.49	1.2	0.004	0.30	0.8	0.86	0.006
6	0.75	0.39	0.55	0.24	0.49	0.47	0.28	0.26	0.44	0.36	0.24	0.21	0.80	0.34	0.44	0.40	0.64	0.50	0.36	0.26	1.1	0.005	0.35	1.2	0.64	0.001
7	0.35	0.35	0.71	0.30	0.61	0.48	0.37	0.43	0.28	0.47	0.61	0.28	0.36	0.40	0.35	0.36	0.57	0.51	0.41	0.38	1.0	0.005	0.42	1.0	0.76	0.003
8	0.29	0.28	0.79	0.70	0.37	0.53	0.48	0.49	0.80	0.41	0.47	0.74	0.55	0.26	0.20	0.54	0.53	0.30	0.39	0.47	0.6	0.004	0.32	1.1	0.82	0.012
9	0.29	0.32	0.58	0.31	0.44	0.21	0.51	0.53	0.54	0.27	0.73	0.45	0.69	0.41	0.61	0.37	0.68	0.29	0.58	0.43	1.9	0.004	0.29	1.3	0.72	0.012
10	0.72	0.44	0.69	0.62	0.38	0.65	0.32	0.39	0.59	0.38	0.50	0.63	0.68	0.32	0.61	0.28	0.33	0.31	0.68	0.52	1.8	0.005	0.20	1.9	0.90	0.012
11	0.61	0.25	0.58	0.67	0.75	0.24	0.69	0.50	0.44	0.26	0.26	0.76	0.53	0.21	0.57	0.55	0.62	0.24	0.61	0.41	0.5	0.005	0.25	1.4	0.79	0.019
12	0.28	0.58	0.25	0.68	0.74	0.43	0.65	0.60	0.49	0.46	0.63	0.20	0.59	0.29	0.22	0.20	0.22	0.74	0.56	0.46	0.5	0.003	0.33	1.6	0.77	0.011
13	0.32	0.50	0.66	0.60	0.46	0.35	0.33	0.32	0.27	0.49	0.26	0.20	0.30	0.55	0.71	0.68	0.38	0.80	0.24	0.31	1.5	0.003	0.26	1.7	0.63	0.010
14	0.43	0.65	0.42	0.24	0.60	0.29	0.61	0.48	0.44	0.45	0.59	0.60	0.52	0.26	0.55	0.37	0.24	0.52	0.45	0.38	1.7	0.005	0.29	0.8	0.62	0.004
15	0.59	0.55	0.60	0.80	0.67	0.34	0.35	0.63	0.29	0.69	0.64	0.21	0.41	0.32	0.78	0.42	0.32	0.37	0.35	0.72	0.9	0.004	0.30	1.3	0.64	0.013
16	0.75	0.62	0.31	0.40	0.65	0.26	0.62	0.22	0.50	0.56	0.51	0.27	0.68	0.51	0.45	0.32	0.21	0.72	0.69	0.39	1.9	0.005	0.37	1.4	0.75	0.020
17	0.66	0.26	0.64	0.44	0.63	0.58	0.44	0.45	0.71	0.38	0.78	0.63	0.21	0.54	0.52	0.64	0.39	0.56	0.30	0.24	2.0	0.005	0.35	0.6	0.84	0.018
18	0.79	0.36	0.20	0.73	0.43	0.47	0.36	0.45	0.21	0.31	0.23	0.66	0.24	0.49	0.76	0.62	0.44	0.31	0.33	0.37	0.7	0.004	0.26	1.1	0.88	0.003
19	0.53	0.40	0.20	0.34	0.67	0.41	0.37	0.63	0.21	0.27	0.66	0.35	0.27	0.25	0.40	0.79	0.69	0.44	0.51	0.38	0.6	0.005	0.25	1.9	0.73	0.013
20	0.56	0.45	0.54	0.33	0.79	0.34	0.52	0.33	0.68	0.27	0.49	0.68	0.74	0.42	0.32	0.33	0.48	0.50	0.69	0.27	1.5	0.004	0.49	0.8	0.89	0.017
21	0.56	0.42	0.66	0.23	0.20	0.69	0.44	0.25	0.30	0.39	0.30	0.78	0.37	0.74	0.48	0.70	0.42	0.74	0.43	0.55	0.2	0.001	0.44	0.9	0.90	0.020
22	0.39	0.29	0.44	0.68	0.69	0.70	0.56	0.26	0.24	0.73	0.76	0.52	0.56	0.55	0.66	0.79	0.74	0.60	0.23	0.71	0.9	0.003	0.24	1.4	0.80	0.017
23	0.31	0.21	0.40	0.58	0.79	0.79	0.30	0.21	0.51	0.72	0.39	0.38	0.59	0.77	0.35	0.21	0.45	0.79	0.37	0.28	0.3	0.005	0.27	1.8	0.82	0.001
24	0.64	0.72	0.66	0.39	0.22	0.52	0.41	0.45	0.50	0.33	0.48	0.68	0.69	0.60	0.21	0.68	0.26	0.42	0.27	0.39	0.2	0.001	0.26	0.7	0.85	0.012
25	0.44	0.39	0.67	0.40	0.48	0.54	0.54	0.70	0.44	0.58	0.65	0.71	0.72	0.58	0.53	0.71	0.67	0.33	0.37	0.42	1.8	0.004	0.27	0.5	0.82	0.017

Table 2 (continued)

#	P_1	P_2	P_3	P_4	P_5	P_6	P_7	P_8	P_9	P_{10}	P_{11}	P_{12}	P_{13}	P_{14}	P_{15}	P_{16}	P_{17}	P_{18}	P_{19}	P_{20}	I_c	I_h	I_r	I_b	I_v	I_t
26	0.26	0.41	0.40	0.48	0.52	0.68	0.66	0.78	0.49	0.77	0.45	0.56	0.74	0.45	0.23	0.69	0.20	0.44	0.72	0.74	1.8	0.005	0.45	1.0	0.88	0.016
27	0.50	0.62	0.70	0.77	0.78	0.64	0.22	0.62	0.24	0.56	0.45	0.55	0.75	0.79	0.28	0.59	0.65	0.42	0.24	0.71	0.7	0.001	0.27	1.6	0.82	0.019
28	0.21	0.31	0.60	0.39	0.80	0.76	0.76	0.49	0.72	0.45	0.47	0.46	0.69	0.71	0.30	0.44	0.51	0.62	0.65	0.21	1.6	0.002	0.36	1.2	0.86	0.004
29	0.65	0.80	0.38	0.77	0.56	0.27	0.22	0.29	0.73	0.67	0.58	0.73	0.79	0.61	0.49	0.48	0.26	0.80	0.58	0.65	1.7	0.003	0.22	1.2	0.87	0.014
30	0.51	0.56	0.56	0.80	0.77	0.76	0.27	0.33	0.72	0.78	0.53	0.47	0.80	0.25	0.39	0.67	0.64	0.56	0.26	0.44	1.8	0.005	0.35	2.0	0.75	0.013
31	0.25	0.61	0.29	0.36	0.58	0.39	0.41	0.57	0.42	0.74	0.79	0.63	0.45	0.22	0.49	0.34	0.41	0.58	0.20	0.57	1.5	0.005	0.30	1.9	0.69	0.012
32	0.67	0.79	0.39	0.35	0.36	0.31	0.37	0.41	0.52	0.55	0.72	0.49	0.72	0.65	0.79	0.21	0.43	0.51	0.79	0.63	0.8	0.004	0.46	1.6	0.90	0.011
33	0.61	0.59	0.33	0.49	0.69	0.45	0.56	0.45	0.27	0.43	0.75	0.54	0.58	0.49	0.73	0.65	0.74	0.57	0.47	0.26	0.6	0.003	0.32	0.8	0.70	0.014
34	0.27	0.49	0.39	0.48	0.60	0.49	0.69	0.24	0.76	0.20	0.59	0.42	0.55	0.30	0.35	0.39	0.58	0.71	0.69	0.71	0.5	0.001	0.29	0.8	0.81	0.012
35	0.58	0.51	0.39	0.31	0.56	0.23	0.25	0.57	0.67	0.66	0.57	0.25	0.30	0.33	0.62	0.55	0.34	0.26	0.73	0.55	0.3	0.001	0.50	0.5	0.90	0.009
36	0.59	0.29	0.21	0.35	0.20	0.49	0.59	0.57	0.78	0.68	0.75	0.64	0.44	0.31	0.25	0.44	0.55	0.39	0.20	0.51	0.7	0.001	0.42	2.0	0.89	0.014
37	0.26	0.50	0.62	0.24	0.50	0.80	0.56	0.68	0.60	0.30	0.39	0.28	0.53	0.29	0.63	0.39	0.80	0.61	0.50	0.21	1.4	0.001	0.46	1.6	0.87	0.016
38	0.28	0.28	0.31	0.44	0.31	0.36	0.46	0.62	0.40	0.60	0.58	0.56	0.38	0.50	0.55	0.35	0.71	0.21	0.38	0.80	1.3	0.002	0.49	1.6	0.65	0.020
39	0.48	0.48	0.72	0.30	0.41	0.44	0.50	0.52	0.77	0.36	0.52	0.43	0.54	0.28	0.40	0.32	0.60	0.75	0.70	0.76	0.7	0.002	0.45	0.8	0.64	0.018
40	0.70	0.69	0.71	0.66	0.33	0.30	0.54	0.36	0.63	0.29	0.33	0.20	0.27	0.61	0.51	0.26	0.70	0.77	0.71	0.36	1.3	0.003	0.36	2.0	0.78	0.009

Table 3 Numerical results for instances 1–40 of the 20-machine line

#	IB	EB			CW			%ΔP*						
		C ₁ –C ₁₉	P*	cpu iter	C ₁ –C ₁₉	P*	cpu iter	C*	P*	E-I	E-C			
1	0,0,0,0,0,0,0,0,0,0,2,1, 1,1,0,1,1	-3.87	11.9	7,86,0	0,0,0,0,0,0,0,0,0,0,0,1,0, 1,0,2,2,2	11.69	8.3	8,81,1	8	11.51	0.2	8,82,0	401.9	1.62
2	1,1,0,4,3,1,2,2,1,1,2,2,2,1, 1,2,1,1,1	-29.52	566.8	41,271,13	0,0,0,1,0,0,0,0,1,0,1,0,1, 1,2,1,2,4	5.89	42.0	15,132,2	15	5.69	0.6	15,132,0	120.0	3.54
3	0,0,2,3,1,2,1,1,0,1,1,1,1, 0,1,2,1,1	-33.38	562.6	33,377,13	0,1,0,1,0,0,0,1,0,0,0,0,1,1, 0,1,2,4,2	-21.37	43.1	14,219,3	14	-22.40	0.5	14,220,0	36.0	4.56
4	0,0,0,0,0,0,0,0,0,0,0,0,1, 1,0,0,0,1	10.78	5.9	3,0,0	0,0,0,0,0,0,0,0,0,0,0,1, 1,0,1,4	13.84	4.1	7,30,0	7	13.81	0.1	7,30,0	28.5	0.22
5	1,2,1,1,1,0,0,4,2,3,1,1,1,0, 1,2,4,4,2	48.79	177.3	32,173,2	2,0,0,1,0,0,1,0,1,1,1,0,0,0, 0,1,3,3,5	62.56	100.6	19,146,4	19	60.53	1.4	19,149,0	28.2	3.35
6	0,0,0,0,0,1,1,1,1,2,1,0,0, 1,1,0,0,1	26.06	63.9	13,117,2	0,0,0,0,0,0,0,0,0,1,0,1,0, 1,0,1,2,4	33.11	7.8	10,32,0	10	33.09	0.3	10,32,0	27.1	0.04
7	1,1,1,1,1,1,2,2,2,1,2,3,3,2, 3,2,1,1,2	54.96	157.1	34,84,2	1,0,0,0,0,0,1,1,0,1,1,1,2, 2,1,1,2,5	68.97	57.2	19,79,1	19	68.70	1.3	19,79,0	25.5	0.39
8	1,0,0,0,1,0,1,0,0,1,1,0,1,3, 2,1,1,1,1	19.06	406.3	25,288,11	0,1,0,0,0,0,0,0,0,0,0,1,2, 1,1,1,2,3	23.75	19.7	12,74,1	12	23.42	0.4	12,75,0	24.6	1.41
9	0,1,1,1,2,1,0,0,1,1,0,0,0,0, 1,1,0,0,1	67.99	90.6	13,100,3	0,0,0,0,0,0,0,1,0,1,0,1,0, 1,1,2,1,3	84.38	15.0	11,0,1	11	84.16	0.4	11,0,0	24.1	0.26
10	1,0,1,1,3,2,3,2,1,2,2,1,2,3, 3,6,6,2,1	-195.27	1172.5	57,511,15	1,0,0,0,0,1,1,0,1,1,0,1,0,1, 2,4,5,4,3	-148.57	216.3	25,412,3	25	-155.04	3.1	25,412,0	23.9	4.17
11	1,0,1,0,1,1,0,1,1,2,1,0,2,2, 1,0,1,1,1	-16.42	133.0	19,298,3	0,1,0,0,1,0,0,0,1,1,0,0,2,1, 1,0,2,2,2	-13.10	36.1	14,232,2	14	-14.00	0.5	14,234,0	20.3	6.46
12	1,0,0,1,0,0,0,0,0,0,1,2,1,2, 4,4,2,0,0	13.04	174.0	23,239,5	1,0,1,0,0,0,0,0,0,1,0,1,1, 2,3,1,2,2	15.60	43.0	15,140,2	15	15.09	0.7	15,142,0	19.6	3.35
13	0,0,0,0,0,0,0,1,1,1,2,2,1,0, 0,0,0,0,1	39.18	37.2	10,61,1	0,0,0,0,0,0,0,0,0,1,1,0,0, 0,1,0,2,4	46.11	6.1	9,0,0	9	45.99	0.2	9,0,0	17.7	0.26

Table 3 (continued)

#	IB	EB				CW				%ΔP*				
		P*	cpu	iter	C ₁ [*] -C ₁₉ [*]	P*	cpu	iter	C ₁ [*] -C ₁₉ [*]	E-I	E-C			
14	0,1,0,1,1,1,0,0,0,1,0,0,1,1,1,2,1,1,1	43.44	155.6	20,97,7	0,0,0,0,0,0,0,0,0,0,0,1,0,1,2,1,2,3	50.98	8.4	10,27,0	10	50.91	0.3	10,27,0	17.4	0.12
15	0,0,0,0,0,0,0,0,0,0,1,1,1,1,1,0,0,1,1	31.24	14.2	7,0,0	0,0,0,0,0,0,0,0,0,0,1,0,1,0,1,1,2,2	36.61	6.9	9,0,0	9	36.38	0.2	9,0,0	17.2	0.63
16	0,0,0,0,2,1,1,1,0,1,1,0,0,0,1,2,2,0,0	68.47	52.3	13,112,1	0,0,0,0,0,1,1,0,0,1,0,0,0,1,1,2,2,2	79.40	19.5	12,71,1	12	78.90	0.4	12,72,0	16.0	0.63
17	1,0,2,0,0,0,1,1,1,1,0,2,2,1,0,1,1,1,3	72.18	142.0	20,143,2	0,0,1,0,0,0,1,0,0,1,1,0,0,1,1,2,5	83.62	41.1	14,128,3	13	82.86	0.6	13,107,0	15.8	0.91
18	0,2,2,0,1,1,1,2,3,3,2,2,2,1,0,0,1,2,2	-8.29	76.6	27,190,0	1,0,2,0,0,0,1,0,1,2,0,2,1,0,1,2,2,5	-6.98	129.0	21,265,4	21	-8.00	1.5	21,265,0	15.8	12.71
19	0,1,1,0,0,1,0,1,2,1,0,1,1,1,1,1,0,0,0	-11.47	398.8	29,347,18	1,0,0,0,0,0,0,0,1,0,1,1,1,1,1,1,1,3	-9.68	17.8	12,170,1	12	-10.16	0.4	12,171,0	15.6	4.77
20	1,0,5,2,2,2,2,3,3,3,2,0,1,3,4,3,2,2,2	152.34	258.7	44,148,2	1,0,1,0,0,1,0,2,2,1,0,1,2,3,5,2,2,3	165.52	285.2	26,187,4	26	159.84	4.3	26,195,0	8.7	3.55
21	0,1,2,7,4,2,2,3,2,2,2,0,0,1,1,1,1,0,0	32.06	84.0	31,0,0	0,0,0,0,1,1,3,2,2,2,0,2,1,1,1,1,2,2	33.31	33.8	22,0,0	21	32.36	1.2	21,0,0	3.9	2.94
22	1,1,0,0,0,0,1,3,1,0,0,0,1,1,0,0,0,1,1	35.16	81.5	15,86,4	1,0,0,0,0,1,2,1,0,1,1,1,0,1,0,0,2,2	35.85	20.5	13,83,1	13	34.84	0.6	13,92,0	1.9	2.90
23	1,2,1,1,0,1,2,2,0,1,1,1,1,0,0,3,2,1,0,2	-25.08	602.7	32,492,11	1,2,0,0,0,1,1,1,0,1,0,0,1,1,2,0,2,5	-22.06	98.5	18,338,4	18	-22.69	1.2	18,339,0	12.1	2.81
24	0,0,1,2,3,1,1,1,2,1,0,1,2,5,2,3,3,2	15.54	601.9	36,214,6	0,0,0,0,1,1,0,1,1,0,0,0,2,0,3,1,3,4	16.19	26.9	17,0,0	16	15.81	0.8	16,0,0	4.2	2.41
25	1,1,1,3,2,2,1,1,2,1,1,1,1,1,1,1,2,5,4	107.55	370.2	37,145,5	1,1,0,1,0,0,1,1,0,0,0,0,1,0,0,2,3,6	120.54	69.0	18,74,3	18	118.23	1.2	18,79,0	12.1	1.96
26	1,1,0,0,1,0,0,0,0,0,1,0,0,2,3,3,3,1,1	127.57	284.1	24,210,10	0,1,0,1,0,0,0,1,0,0,0,0,0,1,3,1,2,1,2	140.77	51.9	14,115,5	13	138.57	0.5	13,105,0	10.3	1.58

Table 3 (continued)

#	IB	EB				CW				%ΔP*				
		P*	cpu	iter	C ₁ [*] -C ₁₉ [*]	P*	cpu	iter	C ₁ [*] -C ₁₉ [*]	E-I	E-C			
27	0,0,0,0,1,2,4,3,3,1,1,1,0,1, 2,1,1,2,2	58.49	914.7	39,280,15	0,0,0,0,0,0,2,1,1,1,0,0,2, 1,1,2,4,2	59.63	26.3	17,0,0	17	58.91	1.0	17,0,0	1.9	1.21
28	2,2,1,1,0,0,0,0,0,1,1,1,0,1, 2,1,1,0,2	153.87	85.8	16,23,0	3,1,1,1,0,0,0,0,0,1,0,0,0,1, 3,1,1,1,3	159.95	66.1	17,0,4	15	158.09	0.8	15,0,0	4.0	1.17
29	0,0,0,0,1,4,4,2,0,0,0,1,0,0, 1,2,2,0,0	59.80	65.6	19,106,3	1,0,0,0,0,2,1,1,0,1,0,0,1, 1,1,1,2,2	64.33	36.0	14,91,3	14	63.60	0.6	14,94,0	7.6	1.16
30	0,0,0,0,0,2,1,0,0,0,1,1,3, 2,0,0,2,2	74.11	164.6	21,230,8	1,0,0,0,0,1,0,0,0,0,1,2, 1,0,1,1,4	83.52	22.4	12,81,2	12	82.58	0.4	12,81,0	12.7	1.14
31	0,0,1,1,0,0,0,0,0,0,0,1,1, 1,1,0,1,1	25.07	32.4	8,112,0	0,0,1,0,0,0,0,0,0,0,0,1,1, 1,1,0,1,3	28.85	11.2	9,62,1	9	28.56	0.2	9,63,0	15.1	1.00
32	0,0,1,1,2,1,1,1,1,0,0,1,0,0, 2,3,1,0,0	76.81	813.0	30,569,16	0,0,0,0,1,1,1,1,0,1,0,0,0, 1,1,2,1,2	84.93	26.6	13,40,2	13	84.11	0.5	13,52,0	10.6	0.98
33	0,0,2,1,0,1,1,1,2,1,0,0,1,1, 0,0,0,1,2	48.90	36.2	14,0,0	0,0,0,0,0,1,1,0,1,1,1,0, 1,0,1,1,4	52.33	13.9	13,0,0	13	51.84	0.5	13,0,0	7.0	0.95
34	1,1,1,0,1,1,1,4,3,4,2,1,1,2, 2,1,1,0,0	46.79	195.6	29,0,4	0,0,0,1,0,1,0,2,1,1,1,2,2, 2,1,1,1,2	47.82	27.5	18,0,0	18	47.38	1.0	18,0,0	2.2	0.93
35	0,1,2,3,4,12,5,1,1,0,3,5,4,3, 1,1,4,2,1	60.27	234.1	53,0,0	0,0,0,1,0,2,1,0,1,1,3,3,3,1, 1,3,5,2,3	61.46	203.2	30,0,1	29	60.91	5.3	29,0,0	2.0	0.90
36	1,3,4,4,2,1,1,1,0,0,0,0,1,3, 3,1,1,3,3	83.50	2714.4	45,513,18	0,0,1,2,3,1,1,0,0,0,0,1,1,2, 2,1,1,3,4	86.68	53.2	23,16,0	23	85.91	2.9	23,29,0	3.8	0.90
37	2,1,1,2,1,0,1,0,1,2,2,2,2,2, 1,2,0,2,3	215.42	6436.3	40,913,19	0,0,1,3,0,0,0,0,1,1,2,1,2,3, 1,2,1,1,4	219.38	132.7	23,0,2	22	217.43	2.8	22,0,0	1.8	0.90
38	1,4,2,2,2,1,1,1,1,0,0,1,1,1, 1,2,2,4,1	179.94	131.6	28,0,0	0,1,1,1,2,1,0,1,1,0,0,1,1,0, 1,1,1,4,2	191.75	79.6	19,0,3	18	190.08	1.7	18,0,0	6.6	0.88
39	1,1,1,3,3,2,2,1,1,2,2,2,3,6, 4,3,1,0,0	122.67	143.5	38,0,0	0,0,0,1,1,1,0,1,1,1,1,1,3, 4,2,1,2,2	128.59	90.8	23,0,1	22	127.47	1.9	22,0,0	4.8	0.88

Table 3 (continued)

#	IB			EB			CW			%ΔP*				
	$C_1^* - C_{19}^*$	P*	cpu iter	$C_1^* - C_{19}^*$	P*	cpu iter	$C^* - P^*$	cpu iter	E-I	E-C				
40	0,0,0,0,1,0,1,0,1,2,2,3,2,0, 1,1,1,0,0	75.62	44.3	16,43,1	0,0,0,0,0,0,0,0,1,1,0,1, 2,2,1,1,2	87.25	17.0	12,0,1	12	87.07	0.4	12,0,0	15.4	0.21

Table 4 Average, minimum, and maximum values of maximum profit, computational time, and number of iterations for instances 1–80 of the 20-machine line

	IB			EB			CW			%ΔP*		
	P*	cpu	iter	P*	cpu	iter	P*	cpu	iter	E-I	E-C	E-C
Ave	74.961	296.051	24,101,4	81.954	50.904	16,46,1	81.219	1.144	16,44,0	15.9	1.23	1.23
Min	-195.269	5.927	3,0,0	-148.566	4.135	7,0,0	-155.036	0.127	7,0,0	1.4	0.04	0.04
Max	273.202	6436.334	57,913,19	284.807	381.256	31,412,5	283.591	7.264	30,412,0	401.9	12.71	12.71

shows the average, minimum, and maximum values of the maximum profit, computational time, and number of iterations for all instances in Tables 3 and 24.

Based on the results shown in Tables 3 and 4 as well as Table 24 in “Appendix 2”, we make the following observations regarding the optimal buffer allocation designs:

1. In all instances, the maximum profit under the optimal EB policy is higher than the respective profit under the optimal IB policy. From Table 4, the percent gain in the net average profit of the optimal EB policy w.r.t. the optimal IB policy (“E–I”) ranges between 1.4 and 401.9% with an average of 15.9%. This implies that for the range of parameters considered, the benefit of the throughput increase under the EB policy significantly outweighs the disadvantage of the WIP increase and transfer cost, also taking into account the fact that a smaller buffer space is needed under the EB policy than under the IB policy to achieve the same throughput level.
2. In all instances, the maximum profit under the optimal EB policy is higher than the respective profit under the optimal CW policy. This is expected given that CW is a special case of EB. From Table 4, the percent gain in the net average profit of the optimal EB policy w.r.t. the optimal CW policy (“E–C”) ranges between 0.04 and 12.71% with an average of 1.23%.
3. In three out of four instances, the total buffer capacity of the optimal EB policy is significantly smaller than that of the optimal IB policy (on average by 7 units). This is expected given that the EB policy utilizes buffer space more efficiently than the IB policy does.
4. In all instances, the total buffer capacity of the optimal EB policy is exactly equal or almost equal (within a unit) to the total capacity of the optimal CW policy. Based on this observation, one could use the following two-stage heuristic for finding the optimal buffer allocation under the EB policy. Stage 1: Find the optimal capacity of the last buffer for the CW policy. This is an easy problem, because there is only one parameter to optimize. Stage 2: Reallocate this capacity to all the buffers to increase the net average profit through an iterative algorithm that is similar to phase 2.

Regarding the computational effort needed to get to the optimal buffer allocation, we make the following observations:

5. The number of iterations of step 1 of phase 1 of the optimization algorithm is generally higher for the IB policy than it is for the EB and CW policies. This is because in each iteration of step 1, the capacity of a single buffer is incremented by one unit until there are no more gains to make. Because the total optimal buffer capacity is generally higher for the IB policy (recall that it is higher in three out of four instances), more iterations of this step are performed for the IB policy than for the other policies. More specifically, from Table 4, the number of iterations of step 1 of phase 1 ranges from 3 to 57 with an average of 24 for the IB policy. For the EB policy, it ranges from 7 to 31 with an average of 16, and for the CW policy it is similar, ranging from 7 to 30 with an average of 16.

6. The number of iterations of step 2 of phase 1 of the optimization algorithm is higher for the IB policy than it is for the EB and CW policies. This is because each time the capacity of a buffer is incremented by one unit in step 1 of phase 1, the resulting increase in throughput is much higher for the EB and CW policies than it is for the IB policy. Therefore, the increase in the gross profit rate r' that is necessary to satisfy the minimum throughput constraint (step 2 of phase 1) is smaller in the EB and CW policies than it is in the IB policy. More specifically, from Table 4, the number of iterations of step 2 of phase 1 of the optimization algorithm ranges from 0 to 913 with an average of 101, for the IB policy. For the EB and CW policies, it ranges from 0 to 412 with an average of 46.
7. The number of iterations of phase 2 of the optimization algorithm is higher for the IB policy than it is for the EB policy (for the CW policy, it is always zero). More specifically, from Table 4, the number of iterations of phase 2 ranges from 0 to 19 with an average of 4, for the IB policy. For the EB policy, it ranges from 0 to 5 with an average of 1. Still, for both policies this number is generally quite low, indicating that phase 1 often leads to the optimal buffer allocation or close to it.
8. The CPU time to reach the optimal solution is much higher for the IB policy than it is for the EB and CW policies. This is because the IB policy requires more iterations in all the steps of the optimization algorithm, as was mentioned earlier, but also because the algorithm used for the performance evaluation of the IB policy is more time consuming than the algorithm used for the performance evaluation of the EB and CW policies.

6.2 8-Machine line with systematically chosen input parameters for sensitivity analysis

For the 8-machine line example, we considered four scenarios, denoted L_1, \dots, L_4 , regarding the production rates of the machines. These scenarios are shown in Table 5. Scenario L_1 represents a totally balanced line where all the machines have the same base production probability of 0.6. Scenarios L_2 – L_4 represent lines where all the machines have the same base production probability of 0.6 except for one machine which has a lower probability, making it the slowest machine. That machine may be upstream, in the middle, or downstream the line. The production probability of the slowest machine is shown in bold.

Table 5 Production rate scenarios with base production probability 0.6 for the 8-machine line

#	p_1	p_2	p_3	p_4	p_5	p_6	p_7	p_8
L_1	0.6	0.6	0.6	0.6	0.6	0.6	0.6	0.6
L_2	0.6	0.5	0.6	0.6	0.6	0.6	0.6	0.6
L_3	0.6	0.6	0.6	0.6	0.5	0.6	0.6	0.6
L_4	0.6	0.6	0.6	0.6	0.6	0.6	0.5	0.6

Table 6 Scenarios of basic parameter I_t and resulting optimization problem parameter t

#	I_t	t
T_1	0.00	0
T_2	0.01	1
T_3	0.02	2

Table 7 Scenarios of basic problem parameters $c_0, I_c, I_h, I_r, I_b, I_v$ and resulting optimization parameters r, b , and h_1, \dots, h_7

#	Basic parameters						Optimization parameters								
	c_0	I_c	I_h	I_r	I_b	I_v	r	b	h_1	h_2	h_3	h_4	h_5	h_6	h_7
O_1	100	0.5	0.001	0.10	2	0.8	50	0.30	0.15	0.2	0.25	0.3	0.35	0.4	0.45
O_2	100	0.0	0.001	0.10	2	0.8	10	0.20	0.10	0.1	0.10	0.1	0.10	0.1	0.10
O_3	100	1.0	0.001	0.10	2	0.8	90	0.40	0.20	0.3	0.40	0.5	0.60	0.7	0.80
O_4	100	5.0	0.001	0.10	2	0.8	410	1.20	0.60	1.1	1.60	2.1	2.60	3.1	3.60
O_5	100	10.0	0.001	0.10	2	0.8	810	2.20	1.10	2.1	3.10	4.1	5.10	6.1	7.10
O_6	100	0.5	0.002	0.10	2	0.8	50	0.60	0.30	0.4	0.50	0.6	0.70	0.8	0.90
O_7	100	0.5	0.001	0.20	2	0.8	100	0.30	0.15	0.2	0.25	0.3	0.35	0.4	0.45
O_8	100	0.5	0.001	0.05	2	0.8	25	0.30	0.15	0.2	0.25	0.3	0.35	0.4	0.45
O_9	100	0.5	0.001	0.10	0	0.8	50	0.00	0.15	0.2	0.25	0.3	0.35	0.4	0.45
O_{10}	100	0.5	0.001	0.10	1	0.8	50	0.15	0.15	0.2	0.25	0.3	0.35	0.4	0.45
O_{11}	100	0.5	0.001	0.10	2	0.0	50	0.30	0.15	0.2	0.25	0.3	0.35	0.4	0.45

We also considered three different scenarios, denoted T_1, T_2, T_3 , regarding basic parameter I_t which determines the cost rate of transferring parts to remote buffers, t , via expression (9). These scenarios are shown in Table 6. Note that T_1 represents the scenario where $I_t = 0$, meaning that $t = 0$.

Finally, we considered 11 different scenarios, denoted O_1, \dots, O_{11} , regarding basic parameters c_0, I_c, I_h, I_r, I_b , and I_v which determine the main optimization parameters r, b , and h_1, \dots, h_7 in problem (1)–(2) according to expressions (5)–(8) and (10). These scenarios are shown in Table 7.

Scenario O_1 is the base scenario. The optimization parameters for this scenario are computed from expressions (6)–(8) as follows:

$$\begin{aligned}
 h_n &= I_h c_0 (1 + nI_c) = (0.001)(100)(1 + 0.5n) \\
 &= 0.1 + 0.05n \text{ \$per part per unit time, } n = 1, \dots, N - 1,
 \end{aligned}$$

$$r = I_r c_0 (1 + NI_c) = (0.1)(100)(1 + (0.5)(8)) = 50 \text{ \$ per part,}$$

$$b = I_b I_h c_0 (1 + I_c) = (2)(0.001)(100)(1 + 0.5) = 0.3 \text{ \$per storage space per unit time.}$$

O_2 – O_{11} are scenarios in which we have changed one of the basic parameters of the base scenario. The changed parameter is shown in bold. Note that O_2, O_9 , and O_{11} represent situations where I_c, I_b , and I_v are zero, respectively. Consequently, under O_2 , all WIP inventory holding cost rates h_1, \dots, h_7 are equal. Similarly, under O_9 , the

Table 8 Numerical results for scenario L_1 of the 8-machine line

Scen.	IB		EB				CW				% ΔP^*			
	$C_1^* - C_7^*$	P^*	cpu	iter	$C_1^* - C_7^*$	P^*	cpu	iter	C^*	P^*	cpu	iter	E-I	E-C
T_1														
O_1	2,3,4,4,4,4,3	12.784	5.00	25,154,1	0,0,0,1,0,5,8	15.991	0.95	14,60,0	14	15.991	0.09	14,60,0	25.08	0.001
O_2	2,3,4,4,4,4,3	-1.345	5.23	25,360,1	0,0,0,0,0,5,9	0.713	1.07	14,248,1	14	0.713	0.08	14,248,0	153.03	0.001
O_3	2,3,4,4,4,4,3	26.914	5.05	25,114,1	0,0,0,1,0,5,8	31.268	1.22	14,22,1	14	31.268	0.08	14,22,0	16.18	0.001
O_4	3,3,3,4,3,4,3	140.952	5.93	25,53,2	0,0,0,1,0,6,7	153.490	1.39	14,0,1	14	153.488	0.08	14,0,0	8.90	0.001
O_5	3,3,3,4,3,4,3	283.135	4.61	24,43,1	0,0,1,0,2,4,8	306.436	2.23	15,0,2	15	306.431	0.09	15,0,0	8.23	0.001
O_6	2,3,4,4,4,3,4	1.570	6.24	25,293,2	0,0,1,2,1,3,7	7.854	1.95	14,199,3	14	7.853	0.08	14,199,0	400.33	0.010
O_7	3,3,4,4,4,4,3	36.925	3.97	25,15,0	0,0,0,0,2,5,10	40.400	1.37	17,0,0	17	40.400	0.15	17,0,0	9.41	0.000
O_8	2,3,4,4,4,3,4	0.785	6.21	25,293,2	0,0,1,2,1,3,7	3.927	2.03	14,199,3	14	3.927	0.07	14,199,0	400.33	0.010
O_9	3,4,5,5,6,6,6	20.347	5.84	35,0,0	0,0,0,1,1,6,9	20.388	2.18	17,0,1	17	20.388	0.16	17,0,0	0.20	0.001
O_{10}	2,3,4,4,4,4,3	16.384	6.28	26,70,2	0,0,0,1,0,5,8	18.091	0.86	14,0,0	14	18.091	0.08	14,0,0	10.41	0.001
O_{11}	1,2,2,2,2,2,2	14.445	1.86	13,0,0	0,0,0,0,1,3,7	16.234	0.60	11,0,1	11	16.234	0.04	11,0,0	12.39	0.000
T_2														
O_1	2,3,4,4,4,4,3	12.784	5.03	25,154,1	0,1,1,2,2,3,5	15.504	1.03	14,62,0	14	15.067	0.07	14,72,0	21.27	2.900
O_2	2,3,4,4,4,4,3	-1.345	5.20	25,360,1	0,1,2,2,2,3,4	0.268	1.39	14,261,1	14	-0.210	0.08	14,270,0	119.89	227.118
O_3	2,3,4,4,4,4,3	26.914	5.06	25,114,1	0,1,1,2,2,3,5	30.767	0.86	14,25,0	14	30.345	0.07	14,30,0	14.32	1.393
O_4	3,3,3,4,3,4,3	140.952	5.86	25,53,2	0,1,1,1,2,3,6	152.942	0.91	14,0,0	14	152.564	0.08	14,0,0	8.51	0.248
O_5	3,3,3,4,3,4,3	283.135	4.60	24,43,1	0,0,1,2,2,3,7	305.865	1.08	15,0,0	15	305.478	0.10	15,0,0	8.03	0.127
O_6	2,3,4,4,4,3,4	1.570	6.10	25,293,2	1,1,1,2,2,2,5	7.391	1.72	14,202,2	14	6.930	0.07	14,205,0	370.82	6.654
O_7	3,3,4,4,4,4,3	36.925	3.89	25,15,0	0,1,2,2,2,4,6	39.850	2.26	17,0,1	16	39.401	0.11	16,0,0	7.92	1.139
O_8	2,3,4,4,4,3,4	0.785	6.16	25,293,2	1,1,1,2,2,2,5	3.482	1.35	14,201,1	14	3.003	0.07	14,211,0	343.65	15.954
O_9	3,4,5,5,6,6,6	20.347	5.77	35,0,0	1,1,2,2,2,3,6	19.880	2.18	17,0,1	17	19.384	0.13	17,0,0	-2.29	2.559
O_{10}	2,3,4,4,4,4,3	16.384	6.28	26,70,2	0,1,1,2,2,3,5	17.604	0.88	14,4,0	14	17.167	0.08	14,14,0	7.44	2.545
O_{11}	1,2,2,2,2,2,2	14.445	1.86	13,0,0	0,1,1,1,2,2,4	15.793	0.53	11,0,0	11	15.423	0.04	11,0,0	9.33	2.400

Table 8 (continued)

Scen.	IB		EB		CW		%ΔP*							
	$C_1^* - C_7^*$	P^*	cpu	iter	$C_1^* - C_7^*$	P^*	cpu	iter	E-I	E-C				
T_3														
O_1	2,3,4,4,4,3	12.784	5.08	25,154,1	1,1,1,2,2,2,5	15.064	1.49	15,88,1	14	14,143	0.07	14,83,0	17.83	6.508
O_2	2,3,4,4,4,3	-1.345	5.17	25,360,1	0,1,2,2,2,3,4	-0.159	1.58	15,290,1	14	-1.134	0.09	14,290,0	88.18	85.987
O_3	2,3,4,4,4,3	26.914	5.10	25,114,1	0,1,1,2,2,3,5	30.301	0.95	14,28,0	14	29.421	0.08	14,38,0	12.59	2.991
O_4	3,3,3,4,3,4,3	140.952	5.82	25,53,2	0,1,1,1,2,3,6	152.437	0.93	14,0,0	14	151.641	0.08	14,0,0	8.15	0.525
O_5	3,3,3,4,3,4,3	283.135	4.53	24,43,1	0,1,1,1,2,3,7	305.323	1.05	15,0,0	15	304.525	0.09	15,0,0	7.84	0.262
O_6	2,3,4,4,4,3,4	1.570	6.15	25,293,2	1,1,1,2,2,2,5	6.964	1.35	14,201,1	14	6.006	0.07	14,211,0	343.65	15.954
O_7	3,3,4,4,4,3	36.925	3.93	25,15,0	1,1,1,2,3,3,6	39.351	2.28	17,0,1	16	38.422	0.11	16,0,0	6.57	2.419
O_8	2,3,4,4,3,4	0.785	6.26	25,293,2	1,1,1,2,2,2,5	3.056	1.55	15,227,1	14	2.079	0.08	14,222,0	289.31	46.945
O_9	3,4,5,5,6,6,6	20.347	5.84	35,0,0	1,1,2,2,3,3,5	19.436	1.42	17,0,0	16	18.400	0.11	16,0,0	-4.48	5.628
O_{10}	2,3,4,4,4,3	16.384	6.31	26,70,2	1,1,1,2,2,2,5	17.164	1.46	15,34,1	14	16.243	0.09	14,28,0	4.76	5.667
O_{11}	1,2,2,2,2,2,2	14.445	1.93	13,0,0	0,1,1,1,2,2,4	15.387	0.50	11,0,0	10	14.631	0.03	10,0,0	6.52	5.163

Table 9 Numerical results for scenario L_2 of the 8-machine line

Scen.	IB	EB			CW			% ΔP^*						
		$C_1^* - C_7^*$	cpu	iter	$C_1^* - C_7^*$	cpu	iter	E-I	E-C					
T_1														
O_1	2,2,2,2,2,2,2	13.713	2.01	14,0,0	0,0,0,0,1,4,6	15.381	0.53	11,0,0	11	15.381	0.04	11,0,0	12.17	0.000
O_2	2,2,2,2,2,2,1	0.459	1.86	13,183,0	0,0,0,0,0,3,6	1.402	0.23	9,115,0	9	1.402	0.03	9,115,0	205.41	0.000
O_3	2,3,2,2,2,2,2	27.129	2.10	15,0,0	0,0,0,0,1,4,7	29.786	0.49	12,0,0	12	29.786	0.06	12,0,0	9.80	0.001
O_4	3,4,3,3,3,3,2	135.119	3.22	21,0,0	0,0,0,1,1,5,7	146.360	0.96	14,0,0	14	146.359	0.07	14,0,0	8.32	0.001
O_5	3,4,3,3,3,3,3	272.163	3.29	22,0,0	0,0,0,1,1,5,7	292.267	0.89	14,0,0	14	292.264	0.09	14,0,0	7.39	0.001
O_6	2,2,2,2,2,2,1	6.844	2.64	14,112,1	0,0,0,0,1,3,5	9.967	0.26	9,58,0	9	9.967	0.03	9,58,0	45.63	0.001
O_7	3,4,3,3,3,3,2	35.207	3.42	21,0,0	0,0,0,1,2,4,9	38.083	1.63	16,0,1	16	38.083	0.12	16,0,0	8.17	0.000
O_8	2,2,2,2,2,2,1	3.422	2.54	14,112,1	0,0,0,0,1,3,5	4.983	0.26	9,58,0	9	4.983	0.03	9,58,0	45.63	0.001
O_9	4,12,6,5,5,5,5	19.559	7.89	42,0,0	0,1,0,0,2,6,8	19.372	1.99	17,0,1	17	19.372	0.16	17,0,0	-0.96	0.002
O_{10}	2,3,3,3,2,3,2	15.892	2.67	18,0,0	0,0,0,0,0,6,7	17.167	0.84	13,0,1	13	17.167	0.06	13,0,0	8.03	0.001
O_{11}	2,2,2,2,2,2,2	13.713	1.92	14,0,0	0,0,0,0,1,4,6	15.381	0.41	11,0,0	11	15.381	0.04	11,0,0	12.17	0.000
T_2														
O_1	2,2,2,2,2,2,2	13.713	1.97	14,0,0	0,1,1,1,2,2,4	14.951	0.47	11,0,0	10	14.584	0.03	10,0,0	9.03	2.518
O_2	2,2,2,2,2,2,1	0.459	1.87	13,183,0	0,1,1,1,2,2,2	1.049	0.52	9,131,1	9	0.694	0.03	9,153,0	128.44	51.040
O_3	2,3,2,2,2,2,2	27.129	2.10	15,0,0	0,1,1,1,2,3,4	29.329	0.53	12,0,0	12	28.943	0.07	12,0,0	8.11	1.335
O_4	3,4,3,3,3,3,2	135.119	3.60	21,0,0	0,1,1,1,2,3,6	145.855	0.87	14,0,0	14	145.452	0.07	14,0,0	7.95	0.277
O_5	3,4,3,3,3,3,3	272.163	3.36	22,0,0	0,1,1,1,2,3,6	291.752	0.81	14,0,0	14	291.358	0.09	14,0,0	7.20	0.135
O_6	2,2,2,2,2,2,1	6.844	2.63	14,112,1	0,1,1,1,1,2,3	9.573	0.33	9,63,0	9	9.259	0.03	9,69,0	39.87	3.391
O_7	3,4,3,3,3,3,2	35.207	3.54	21,0,0	0,1,2,2,2,3,5	37.605	0.91	15,0,0	15	37.150	0.08	15,0,0	6.81	1.224
O_8	2,2,2,2,2,2,1	3.422	2.58	14,112,1	0,1,1,1,1,2,3	4.608	0.31	9,60,0	9	4.275	0.03	9,79,0	34.67	7.781
O_9	4,12,6,5,5,5,5	19.559	7.89	42,0,0	0,2,2,2,3,3,5	18.921	1.17	17,0,0	16	18.410	0.14	16,0,0	-3.26	2.773
O_{10}	2,3,3,3,2,3,2	15.892	2.69	18,0,0	0,1,1,2,2,3,4	16.718	0.65	13,0,0	12	16.291	0.05	12,0,0	5.20	2.624
O_{11}	2,2,2,2,2,2,2	13.713	1.91	14,0,0	0,1,1,1,2,2,4	14.951	0.43	11,0,0	10	14.584	0.03	10,0,0	9.03	2.518

Table 9 (continued)

Scen.	IB			EB			CW			%ΔP*		
	$C_1^*C_7^*$	cpu	iter	$C_1^*C_7^*$	cpu	iter	C^*	P^*	cpu	iter	E-I	E-C
T_3												
O_1	2,2,2,2,2,2,2	2.10	14,0,0	0,1,1,1,2,2,2,3	14,561	11,0,0	10	13,824	0.03	10,0,0	6.19	5,329
O_2	2,2,2,2,2,2,1	0.459	13,183,0	1,1,1,1,1,2,2	0.751	9,144,1	9	-0.013	0.03	9,185,0	63.62	5690,728
O_3	2,3,2,2,2,2,2	27.129	15,0,0	0,1,1,2,2,2,4	28,913	12,0,0	12	28,100	0.05	12,0,0	6.58	2,893
O_4	3,4,3,3,3,3,2	135.119	3,34	0,1,1,2,2,3,5	145,394	14,0,0	14	144,546	0.08	14,0,0	7.60	0,586
O_5	3,4,3,3,3,3,3	272.163	3,26	0,1,1,1,2,3,6	291,258	14,0,0	14	290,452	0.07	14,0,0	7.02	0,278
O_6	2,2,2,2,2,2,1	6.844	14,112,1	0,1,1,1,1,2,3	9,216	0,30	9	8,551	0.03	9,79,0	34.67	7,781
O_7	3,4,3,3,3,3,2	35.207	3,41	0,2,2,2,2,3,5	37,166	1,08	15	36,218	0.08	15,0,0	5.57	2,616
O_8	2,2,2,2,2,2,1	3.422	2,59	0,1,1,1,2,2,2	4,271	0,34	9	3,568	0.03	9,98,0	24.81	19,707
O_9	4,1,2,6,5,5,5	19.559	7,93	0,2,2,3,3,3,4	18,496	1,21	15	17,460	0.09	15,0,0	-5.44	5,930
O_{10}	2,3,3,3,2,3,2	15.892	2,68	0,1,2,2,2,3,3	16,303	0,64	12	15,447	0.05	12,0,0	2.59	5,541
O_{11}	2,2,2,2,2,2,2	13.713	1,94	0,1,1,2,2,2,3	14,561	0,43	10	13,824	0.03	10,0,0	6.19	5,329

Table 10 Numerical results for scenario L_3 of the 8-machine line

Scen.	IB	EB			CW			% ΔP^*						
		C_1^* - C_7^*	cpu	iter	C_1^* - C_7^*	cpu	iter	E-I	E-C					
T_1														
O_1	1,2,2,2,3,2,2	13,437	2.58	15,23,1	0,0,0,0,1,4,6	15,201	0.40	11,0,0	11	15,201	0.04	11,0,0	13.13	0.001
O_2	1,2,2,2,3,2,2	0.339	2.68	15,228,1	0,0,0,0,0,3,6	1.402	0.26	9,115,0	9	1.402	0.03	9,115,0	314.02	0.000
O_3	1,2,2,3,3,2,2	26,568	2.02	15,0,0	0,0,0,0,1,5,6	29,354	0.49	12,0,0	12	29,354	0.05	12,0,0	10.49	0.001
O_4	2,2,3,3,4,3,2	132,970	2.45	19,0,0	0,0,0,0,3,4,6	143,542	1.01	13,0,1	13	143,541	0.07	13,0,0	7.95	0.001
O_5	2,2,3,3,4,3,2	266,577	2.46	19,0,0	0,0,0,0,3,4,6	286,411	0.90	13,0,1	13	286,408	0.06	13,0,0	7.44	0.001
O_6	1,2,2,2,3,2,2	6,501	2.67	15,162,1	0,0,0,0,1,3,5	9,726	0.26	9,67,0	9	9,726	0.03	9,67,0	49.61	0.002
O_7	2,2,3,4,4,3,2	34,760	2.72	20,0,0	0,0,0,0,3,4,8	37,729	0.96	15,0,0	15	37,728	0.08	15,0,0	8.54	0.000
O_8	1,2,2,2,3,2,2	3,250	2.63	15,162,1	0,0,0,0,1,3,5	4,863	0.26	9,67,0	9	4,863	0.03	9,67,0	49.61	0.002
O_9	2,3,4,5,11,5,5	19,005	5.31	35,0,0	0,0,0,1,1,6,7	18,970	1.45	15,0,1	15	18,970	0.08	15,0,0	-0.18	0.001
O_{10}	1,2,2,3,3,2,2	15,621	1.99	15,0,0	0,0,0,0,1,5,6	16,918	0.57	12,0,0	12	16,918	0.08	12,0,0	8.30	0.001
O_{11}	1,1,2,2,2,2,1	13,448	1.59	11,0,0	0,0,0,0,1,4,6	15,201	0.41	11,0,0	11	15,201	0.04	11,0,0	13.04	0.001
T_2														
O_1	1,2,2,2,3,2,2	13,437	2.56	15,23,1	0,1,1,1,2,2,3	14,752	0.43	10,0,0	10	14,436	0.03	10,0,0	9.78	2.190
O_2	1,2,2,2,3,2,2	0.339	2.60	15,228,1	0,1,1,1,2,2,2	1,040	0.34	9,129,0	9	0.694	0.03	9,153,0	207.22	49.847
O_3	1,2,2,3,3,2,2	26,568	2.01	15,0,0	0,1,1,1,2,3,4	28,867	0.87	12,0,1	11	28,523	0.04	11,0,0	8.65	1.203
O_4	2,2,3,3,4,3,2	132,970	2.50	19,0,0	0,0,1,2,2,3,5	142,993	0.63	13,0,0	13	142,664	0.07	13,0,0	7.54	0.231
O_5	2,2,3,3,4,3,2	266,577	2.42	19,0,0	0,0,1,1,2,3,6	285,856	0.81	13,0,0	13	285,531	0.06	13,0,0	7.23	0.114
O_6	1,2,2,2,3,2,2	6,501	2.66	15,162,1	0,0,1,1,2,2,3	9,310	0.31	9,72,0	9	9.018	0.03	9,77,0	43.21	3.240
O_7	2,2,3,4,4,3,2	34,760	2.70	20,0,0	0,1,1,2,3,3,5	37,200	1.06	15,0,0	15	36,797	0.09	15,0,0	7.02	1.096
O_8	1,2,2,2,3,2,2	3,250	2.54	15,162,1	0,1,1,1,1,2,3	4,473	0.49	9,77,1	9	4.155	0.04	9,87,0	37.61	7.651
O_9	2,3,4,5,11,5,5	19,005	5.30	35,0,0	1,1,1,2,3,3,4	18,476	0.86	15,0,0	15	18.039	0.08	15,0,0	-2.78	2.428
O_{10}	1,2,2,3,3,2,2	15,621	2.05	15,0,0	0,1,1,2,2,2,4	16,450	0.62	12,0,0	12	16.074	0.05	12,0,0	5.30	2.335
O_{11}	1,1,2,2,2,2,1	13,448	1.59	11,0,0	0,1,1,1,1,2,2,3	14,752	0.37	10,0,0	10	14,436	0.03	10,0,0	9.70	2.190

Table 10 (continued)

Scen.	IB	EB				CW				%ΔP*				
		$C_1^*C_7^*$	P^*	cpu	iter	$C_1^*C_7^*$	P^*	cpu	iter	E-I	E-C			
T_3														
O_1	1,2,2,2,3,2,2	13,437	2.62	15,23,1	0,1,1,1,2,2,3	14,375	0.45	10,0,0	10	13,676	0.04	10,0,0	6.98	5,110
O_2	1,2,2,2,3,2,2	0,339	2.67	15,228,1	0,1,1,2,1,2,2	0,733	0.53	9,145,1	9	-0.013	0.03	9,185,0	116,42	5542,108
O_3	1,2,2,3,3,2,2	26,568	2.04	15,0,0	0,1,1,2,2,2,4	28,430	0.63	12,0,0	11	27,719	0.05	11,0,0	7.01	2,565
O_4	2,2,3,3,4,3,2	132,970	2.59	19,0,0	0,1,1,1,2,3,5	142,500	1.04	13,0,1	13	141,787	0.06	13,0,0	7.17	0,503
O_5	2,2,3,3,4,3,2	266,577	2.46	19,0,0	0,0,1,2,2,3,5	285,315	0.65	13,0,0	13	284,654	0.06	13,0,0	7.03	0,232
O_6	1,2,2,2,3,2,2	6,501	2.64	15,162,1	0,1,1,1,1,2,3	8,946	0.46	9,77,1	9	8,310	0.03	9,87,0	37,61	7,651
O_7	2,2,3,4,4,3,2	34,760	2.71	20,0,0	0,1,1,2,3,3,5	36,706	0.94	15,0,0	14	35,883	0.07	14,0,0	5.60	2,292
O_8	1,2,2,2,3,2,2	3,250	2.61	15,162,1	0,1,1,1,2,2,2	4,138	0.34	9,82,0	9	3,447	0.03	9,105,0	27,31	20,046
O_9	2,3,4,5,11,5,5	19,005	5.31	35,0,0	1,1,1,2,3,3,4	18,044	1.01	15,0,0	14	17,129	0.07	14,0,0	-5.06	5,344
O_{10}	1,2,2,3,3,2,2	15,621	2.10	15,0,0	0,1,1,2,2,3,3	16,034	0.55	12,0,0	11	15,242	0.04	11,0,0	2.64	5,194
O_{11}	1,1,2,2,2,2,1	13,448	1.51	11,0,0	0,1,1,1,2,2,3	14,375	0.38	10,0,0	10	13,676	0.03	10,0,0	6.90	5,110

Table 11 Numerical results for scenario L_4 of the 8-machine line

Scen.	IB		EB		CW		% ΔP^*							
	$C_1^* - C_7^*$	P^*	cpu	iter	$C_1^* - C_7^*$	P^*	cpu	iter	E-I	E-C				
T_1														
O_1	1,2,2,2,3,2	13.344	2.01	14,11,0	0,0,0,0,1,1,8	15.097	0.33	10,0,0	10	15.097	0.04	10,0,0	13.14	0.000
O_2	1,2,2,2,2,2,2	0.445	2.72	14,194,1	0,0,0,0,0,2,7	1.402	0.27	9,115,0	9	1.402	0.03	9,115,0	215.09	0.000
O_3	1,2,2,2,3,2	26.376	2.05	14,0,0	0,0,0,0,2,1,8	29.088	0.41	11,0,0	11	29.088	0.04	11,0,0	10.28	0.000
O_4	2,2,2,2,3,3,3	132.076	2.34	17,0,0	0,0,1,1,2,1,8	141.836	1.49	13,0,2	13	141.829	0.06	13,0,0	7.39	0.005
O_5	2,2,2,2,3,3,3	264.423	2.34	17,0,0	0,0,1,1,2,1,8	282.999	1.56	13,0,2	13	282.985	0.06	13,0,0	7.03	0.005
O_6	1,2,2,2,2,2,2	6.459	2.61	14,150,1	0,0,0,0,1,1,7	9.566	0.35	9,73,1	9	9.565	0.04	9,73,0	48.08	0.001
O_7	2,2,3,3,3,4,4	34.631	3.24	21,0,0	0,0,0,0,2,1,11	37.494	1.38	14,0,1	14	37.494	0.07	14,0,0	8.27	0.000
O_8	1,2,2,2,2,2,2	3.230	2.64	14,150,1	0,0,0,0,1,1,7	4.783	0.35	9,73,1	9	4.783	0.03	9,73,0	48.08	0.001
O_9	1,5,4,4,4,5,10	18.435	6.64	33,0,0	0,0,1,1,2,0,10	18.741	1.26	14,0,1	14	18.740	0.08	14,0,0	1.66	0.005
O_{10}	1,2,2,2,3,3,3	15.511	2.32	16,0,0	0,0,0,1,1,0,10	16.774	1.06	12,0,2	12	16.774	0.05	12,0,0	8.14	0.000
O_{11}	1,1,2,2,2,2,2	13.412	1.79	12,0,0	0,0,0,0,1,1,8	15.097	0.33	10,0,0	10	15.097	0.04	10,0,0	12.56	0.000
T_2														
O_1	1,2,2,2,2,3,2	13.344	2.05	14,11,0	0,1,1,1,1,2,4	14.650	0.52	10,0,0	10	14.337	0.04	10,0,0	9.79	2.180
O_2	1,2,2,2,2,2,2	0.445	2.67	14,194,1	0,1,1,1,1,2,3	1.037	0.47	9,130,0	9	0.694	0.04	9,153,0	133.05	49.361
O_3	1,2,2,2,2,3,2	26.376	2.05	14,0,0	0,1,1,1,1,2,5	28.599	0.91	11,0,1	11	28.284	0.04	11,0,0	8.43	1.115
O_4	2,2,2,2,3,3,3	132.076	2.30	17,0,0	0,1,1,1,1,2,7	141.276	1.24	13,0,1	12	140.960	0.06	12,0,0	6.97	0.224
O_5	2,2,2,2,3,3,3	264.423	2.32	17,0,0	0,0,1,1,2,2,7	282.420	0.77	13,0,0	13	282.108	0.06	13,0,0	6.81	0.111
O_6	1,2,2,2,2,2,2	6.459	2.63	14,150,1	0,0,1,1,1,2,4	9.146	0.32	9,76,0	9	8.858	0.03	9,83,0	41.59	3.253
O_7	2,2,3,3,3,4,4	34.631	3.25	21,0,0	0,1,1,1,2,3,6	36.953	0.98	14,0,0	14	36.588	0.07	14,0,0	6.70	0.998
O_8	1,2,2,2,2,2,2	3.230	2.59	14,150,1	0,1,1,1,1,2,3	4.399	0.53	9,85,1	9	4.075	0.03	9,92,0	36.20	7.952
O_9	1,5,4,4,4,5,10	18.435	6.67	33,0,0	1,1,1,1,2,3,5	18.239	0.84	14,0,0	14	17.833	0.07	14,0,0	-1.06	2.275
O_{10}	1,2,2,2,3,3,3	15.511	2.28	16,0,0	0,1,1,1,1,3,5	16.294	0.74	12,0,0	12	15.930	0.06	12,0,0	5.05	2.284
O_{11}	1,1,2,2,2,2,2	13.412	1.74	12,0,0	0,1,1,1,1,2,4	14.650	0.40	10,0,0	10	14.337	0.04	10,0,0	9.23	2.180

Table 11 (continued)

Scen.	IB	EB				CW				%ΔP*				
		$C_1^* - C_7^*$	P*	cpu	iter	$C_1^* - C_7^*$	P*	cpu	iter	E-I	E-C			
T_3														
O_1	1,2,2,2,2,3,2	13.344	2.07	14,11,0	0,1,1,1,1,3,3	14.263	0.44	10,0,0	9	13.585	0.04	9,0,0	6.89	4.988
O_2	1,2,2,2,2,2,2	0.445	2.67	14,194,1	0,1,1,1,1,3,2	0.732	0.59	9,152,1	9	-0.013	0.03	9,185,0	64.55	5545.417
O_3	1,2,2,2,2,3,2	26.376	1.97	14,0,0	0,1,1,1,1,3,4	28.180	0.60	11,0,0	11	27.479	0.04	11,0,0	6.84	2.551
O_4	2,2,2,2,3,3,3	132.076	2.29	17,0,0	0,1,1,1,1,3,6	140.771	0.79	13,0,0	12	140.117	0.06	12,0,0	6.58	0.466
O_5	2,2,2,2,3,3,3	264.423	2.32	17,0,0	0,1,1,1,1,2,7	281.883	1.13	13,0,1	13	281.231	0.06	13,0,0	6.60	0.232
O_6	1,2,2,2,2,2,2	6.459	2.61	14,150,1	0,1,1,1,1,2,3	8.798	0.50	9,85,1	9	8.150	0.03	9,92,0	36.20	7.952
O_7	2,2,3,3,3,4,4	34.631	3.32	21,0,0	0,1,1,1,2,4,5	36.454	1.06	14,0,0	14	35.682	0.10	14,0,0	5.26	2.163
O_8	1,2,2,2,2,2,2	3.230	2.62	14,150,1	0,1,1,1,1,2,3	4.062	0.36	9,77,0	9	3.367	0.03	9,110,0	25.76	20.628
O_9	1,5,4,4,4,5,10	18.435	6.69	33,0,0	1,1,1,1,2,3,5	17.801	1.04	14,0,0	13	16.935	0.07	13,0,0	-3.44	5.109
O_{10}	1,2,2,2,3,3,3	15.511	2.40	16,0,0	1,1,1,1,1,3,4	15.870	0.62	12,0,0	11	15.122	0.04	11,0,0	2.32	4.947
O_{11}	1,1,2,2,2,2,2	13.412	1.67	12,0,0	0,1,1,1,1,3,3	14.263	0.44	10,0,0	9	13.585	0.04	9,0,0	6.35	4.988

cost rate of storage space b is zero. Finally, under O_{11} , the minimum required average throughput v_{min} is zero.

We solved problem (1)–(2) for all combinations of scenarios L_1 – L_4 , T_1 – T_3 , and O_1 – O_{11} , i.e., for a total of $4 \times 3 \times 11 = 132$ instances. Tables 8, 9, 10 and 11 show the optimization results for all these instances. More specifically, each table shows the results for a specific production rate scenario, L_1, \dots, L_4 , and all combinations of scenarios T_1 – T_3 , and O_1 – O_{11} . Each row in each table shows the scenario combination, the optimal buffer sizes (C_1^* – C_7^* for the IB and EB policies and C^* for the CW policy), the maximum profit P^* , the computational time (cpu) in minutes, and the number of iterations of steps 1 and 2 of phase 1 and of phase 2 of the optimization algorithm that were needed to get to the optimal solution, for each policy (iter). The last two elements (“% ΔP^* ”) show the percent gain in the net average profit of the optimal EB policy w.r.t. the optimal IB policy (“E–I”) and the optimal CW policy (“E–C”), computed from (11) and (12), respectively.

Based on the results, we make the following observations, some of which coincide with observations 1–4 listed in Sect. 6.1:

1. In almost all instances, the maximum profit under the optimal EB policy is higher than the respective profit under the optimal IB policy. The only instances where the optimal IB policy outperforms the optimal EB policy are the instances where $I_b = 0$ (scenario O_9). Indeed, when the cost of buffer capacity is zero, the efficiency in buffer space utilization under EB becomes irrelevant and does not bring any advantage over IB.
2. In all instances, the maximum profit under the optimal EB policy is higher than the respective profit under the optimal CW policy. When $I_t = 0$, meaning that $t = 0$ (scenario T_1), the difference in maximum profit between the two policies is negligible; however, as t increases (scenarios T_2 and T_3), the difference in the maximum profit becomes quite significant. This is expected, because CW results in a higher transfer rate of parts to remote buffers than EB does, since in CW, there is only one buffer, and that buffer is remote for all machines except M_{N-1} .
3. In almost all instances, the total buffer capacity of the optimal EB policy is significantly smaller than that of the optimal IB policy. The only cases where the two capacities are equal are a few instances where $I_v = 0$ (scenario O_{11}). In these instances, $v_{min} = 0$, which means that constraint (2) is redundant.
4. In most instances, the total buffer capacity of the optimal EB policy is exactly equal or almost equal (within a unit) to the total capacity of the optimal CW policy.
5. In all instances, as I_t increases, implying that the cost rate of transferring parts to remote buffers, t , increases, the dominance of the EB policy over the IB policy fades. This is expected, because the cost of transferring parts to remote buffers applies only to the EB policy.
6. Scenarios O_2 , O_6 , and O_8 result in the lowest net average profit under all policies. The reason for this differs depending on the scenario. In the case of O_2 and O_8 , the reason is that the gross profit rate r is low compared to the cost rates. In the case of O_6 , the reason is that the inventory holding cost rates h_n , $n = 1, \dots, N - 1$, are high. Given that in these three scenarios the profit is the lowest (and in some

cases, even negative), it is not surprising that the noted increase in the net average profit of the optimal EB policy over the other two policies is the highest in percentage terms.

7. A careful comparison among scenarios L_2 , L_3 , L_4 , which represent lines with a slow machine, shows that the further downstream the slow machine, the lower the optimal average net profit of the line and the lower the optimal total buffer capacity under any policy. This is expected since a slow machine causes congestion upstream the line; therefore, the further downstream the slow machine, the more extensive the propagation of the congestion—and its adverse effect—upstream the line.

We also run two additional sets of scenarios for the production rates of the 8-machine line in which we used a base production probability of 0.4 and 0.8, respectively, instead of 0.6, which was used in the set shown in Table 5. The input parameters and results for these sets are shown in “Appendix 3”. Qualitatively, these results are similar to the results that were obtained for the base production probability of 0.6, discussed above. Quantitatively, they differ. By comparing the results for the three scenario sets, we observe that as the base production probability decreases from 0.8 to 0.6 to 0.4, the optimal buffer capacities and the maximum profit also decrease for all policies. This is natural, because as the base production probability decreases, the average throughput of the line drops and so do the profits.

At the same time, however, the percent gain in the net average profit of the optimal EB policy w.r.t. the optimal IB policy (E–I) and w.r.t. the optimal CW policy (E–C) increases (we only consider the instances where the profit is positive). This can probably be explained by the fact that as the maximum profit decreases in absolute terms for all policies, the relative differences in maximum profit between the policies become more prominent.

A closer look at the results further reveals that in most instances as the base production probability decreases, the relative gain of EB over IB rises more sharply than does the relative gain of EB over CW. One possible explanation for this is that as the base production probability decreases, the production times of the machines have higher variability (the coefficient of variability of the production times of a Bernoulli machine with production probability p_n is $1 - p_n$); EB, being a policy that releases parts based on global information, copes better with increased variability than does IB, where the release of parts is based on local information.

7 Conclusions

We set up and carried out an extensive numerical study for the optimization and comparison of the EB policy for operating flow lines with intermediate finite-capacity buffers against two well-known and well-studied policies: IB and CW. Compared to IB, EB aims to increase the utilization of the intermediate buffers by controlling the release of parts in each stage based on the echelon WIP level associated with that stage. CW, which is a special case of EB, also results in increasing the utilization of the intermediate buffers but in a less regulated way, because it only controls the release of parts at the beginning of the line.

Our numerical results indicate that the optimal EB policy generally outperforms the optimal IB and CW policies, the difference in performance being striking in some cases. The results also show that as production probabilities of the machines decrease, the relative advantage in performance of the EB policy over the other two policies increases. When the cost of transferring parts to remote buffers is negligible, the optimal EB policy slightly outperforms the optimal CW policy but significantly outperforms the optimal IB policy. Therefore, in such cases, CW is a good performer. Finally, when the cost of transferring parts to remote buffers is noticeable, the dominance of EB over CW increases while the dominance of EB over IB decreases.

While some of our results were expected, other results were less obvious at the onset of this study. For example, the result that the EB policy outperforms CW was expected, since CW is a special case of EB. However, the magnitude of the difference in performance between the two policies was not obvious. Similarly, the result that EB outperforms IB when the cost of transferring parts to remote buffers is negligible was not apparent, because EB, besides incurring additional costs for transferring parts to remote buffers, also results in higher WIP levels than IB does.

We believe that the EB policy performs well primarily because it increases the utilization of the existing buffers but can still block machines from producing if the number of parts that they have already produced but are still in the system is large. An obvious advantage of the EB policy is that it uses global information for releasing parts at any stage whereas IB uses local information. It is likely for this reason that as the variability of the machine production times increases, the relative advantage in performance of the EB policy over the IB policy increases sharply.

A shortcoming of the EB policy is that it has increased material handling requirements compared to the IB policy. As is explained in Liberopoulos (2018), technology can handle such increased requirements at affordable costs. Today, there exist several modular reconfigurable material handling solutions that can be assembled flexibly to transport parts in the manufacturing floor. Many of the material handling ideas and equipment that are used in flow lines with reentrant flows (e.g., in semiconductor manufacturing) can also be used to implement the EB policy. The material handling technology for implementing the EB policy can also be found in classical flexible manufacturing systems and their successors, reconfigurable manufacturing systems, where typically pallets are sent back and forth to the work centers.

Having established that the EB has advantages over the IB and CW policies in serial flow lines, a future research direction would be to explore if these advantages carry over to other system configurations, for example, assembly/disassembly lines, lines with fork/join stations, reentrant flows, etc., as well as lines producing multiple products. Another direction would be to consider more general machine reliability models than the Bernoulli model.

Acknowledgements This research has received funding from the EU ECSEL Joint Undertaking under Grant Agreement No 737459 (project Productive4.0) and from the General Secretariat of Research and Technology of Greece’s Ministry of Education and Research.

Appendix 1: Numerical tests for the 8-machine line verifying the concavity of the net average profit under the EB policy

Tables 12, 13, 14, 15, 16, 17, 18, 19, 20, 21 and 22 present the buffer capacity designs under the EB policy that resulted in each iteration of the two-phase optimization algorithm, for scenarios L_1, T_3 , and O_1-O_{11} of the 8-machine line. Each row shows the iteration number, the buffer capacity design at that iteration, and the eigenvalues corresponding to the Hessian matrix of partial derivatives of the average net profit with respect to the buffer capacities at that design. The buffer capacity design in the last row of each table is the optimal design shown in Table 8. In all cases, all the eigenvalues of the Hessian matrix are negative, indicating that the average net profit at the buffer capacity designs examined is concave.

Table 12 Numerical results per iteration for scenario L_1, T_3, O_1 of the 8-machine line, under the EB policy

Iter.	C_1-C_7	Eigenvalues of Hessian matrix						
0	0,0,0,0,0,0	-2.8455	-1.5827	-0.5384	-0.4419	-0.2953	-0.2339	-0.1034
1	0,0,0,0,0,1	-2.0650	-1.6925	-0.6068	-0.4437	-0.3687	-0.1930	-0.0389
2	0,0,0,0,1,1	-2.0300	-1.3452	-0.5486	-0.3975	-0.2136	-0.0795	-0.0332
3	0,0,0,0,1,1	-2.0348	-0.9739	-0.4571	-0.2643	-0.1465	-0.0679	-0.0482
4	0,0,0,0,1,1,2	-1.7930	-0.7570	-0.3656	-0.1769	-0.0887	-0.0404	-0.0229
5	0,0,0,1,1,1,2	-1.5854	-0.5634	-0.2615	-0.1457	-0.0701	-0.0502	-0.0328
6	0,0,1,1,1,1,2	-1.3159	-0.4259	-0.2522	-0.1182	-0.0770	-0.0628	-0.0437
7	0,0,1,1,1,2,2	-1.0925	-0.3236	-0.1700	-0.0846	-0.0613	-0.0520	-0.0341
8	0,0,1,1,1,2,3	-0.8903	-0.2610	-0.1237	-0.0622	-0.0470	-0.0378	-0.0199
9	0,1,1,1,1,2,3	-0.6862	-0.2371	-0.1033	-0.0663	-0.0544	-0.0432	-0.0244
10	0,1,1,1,2,2,3	-0.5726	-0.1743	-0.0834	-0.0578	-0.0470	-0.0324	-0.0282
11	0,1,1,1,2,2,4	-0.4785	-0.1387	-0.0653	-0.0461	-0.0399	-0.0264	-0.0170
12	0,1,1,2,2,2,4	-0.3970	-0.1087	-0.0621	-0.0404	-0.0317	-0.0250	-0.0196
13	0,1,1,2,2,3,4	-0.3374	-0.0868	-0.0474	-0.0349	-0.0269	-0.0225	-0.0174
14	1,1,1,2,2,3,4	-0.2478	-0.0749	-0.0477	-0.0372	-0.0290	-0.0234	-0.0189
15	1,1,1,2,2,3,5	-0.2139	-0.0614	-0.0396	-0.0323	-0.0233	-0.0205	-0.0131
16	1,1,1,2,2,2,5	-0.2467	-0.0771	-0.0488	-0.0376	-0.0288	-0.0236	-0.0138

Table 13 Numerical results per iteration for scenario L_1, T_3, O_2 of the 8-machine line, under the EB policy

Iter.	C_1-C_7	Eigenvalues of Hessian matrix						
0	0,0,0,0,0,0	-0.5151	-0.3787	-0.1141	-0.1099	-0.0810	-0.0524	-0.0468
1	0,0,0,0,0,1	-0.3707	-0.3479	-0.1331	-0.1041	-0.0895	-0.0712	-0.0223
2	0,0,0,0,1,1	-0.3451	-0.2659	-0.1289	-0.1075	-0.0849	-0.0452	-0.0114
3	0,0,0,1,1,1	-0.3297	-0.2130	-0.1228	-0.0961	-0.0654	-0.0238	-0.0182
4	0,0,1,1,1,1	-0.3107	-0.1705	-0.1064	-0.0824	-0.0384	-0.0297	-0.0262
5	0,1,1,1,1,1	-0.2683	-0.1367	-0.0973	-0.0576	-0.0388	-0.0335	-0.0316
6	0,1,1,1,1,1	-0.1857	-0.1425	-0.0750	-0.0473	-0.0397	-0.0368	-0.0277
7	0,1,1,1,1,2	-0.1643	-0.1011	-0.0600	-0.0414	-0.0368	-0.0314	-0.0190
8	0,1,1,1,2,2	-0.1474	-0.0785	-0.0488	-0.0361	-0.0323	-0.0287	-0.0148
9	0,1,1,2,2,2	-0.1310	-0.0625	-0.0410	-0.0325	-0.0316	-0.0189	-0.0167
10	0,1,1,2,2,3	-0.1144	-0.0530	-0.0369	-0.0315	-0.0281	-0.0196	-0.0097
11	0,1,2,2,2,3	-0.1022	-0.0442	-0.0314	-0.0287	-0.0211	-0.0182	-0.0106
12	0,1,2,2,3,3	-0.0932	-0.0408	-0.0294	-0.0240	-0.0187	-0.0155	-0.0090
13	1,1,2,2,3,3	-0.0521	-0.0321	-0.0247	-0.0234	-0.0180	-0.0156	-0.0096
14	1,1,2,2,3,4	-0.0474	-0.0305	-0.0242	-0.0212	-0.0180	-0.0139	-0.0064
15	1,2,2,2,3,4	-0.0407	-0.0239	-0.0211	-0.0182	-0.0159	-0.0137	-0.0068
16	0,1,2,2,3,4	-0.0753	-0.0311	-0.0219	-0.0190	-0.0169	-0.0138	-0.0065

Table 14 Numerical results per iteration for scenario L_1, T_3, O_3 of the 8-machine line, under the EB policy

Iter.	C_1-C_7	Eigenvalues of Hessian matrix						
0	0,0,0,0,0,0	-5.1781	-2.8043	-0.9660	-0.7785	-0.5082	-0.4151	-0.1338
1	0,0,0,0,0,1	-3.7727	-3.0283	-1.0802	-0.7842	-0.6464	-0.3170	-0.0497
2	0,0,0,0,1,1	-3.7209	-2.4212	-0.9692	-0.6876	-0.3453	-0.1131	-0.0492
3	0,0,0,1,1,1	-3.7415	-1.7353	-0.7921	-0.4371	-0.2378	-0.1038	-0.0685
4	0,0,0,1,1,2	-3.3142	-1.3389	-0.6207	-0.2703	-0.1145	-0.0514	-0.0316
5	0,0,1,1,1,2	-2.9223	-0.9812	-0.4313	-0.2280	-0.0974	-0.0665	-0.0471
6	0,0,1,1,2,2	-2.4363	-0.7536	-0.3020	-0.1401	-0.0788	-0.0542	-0.0342
7	0,1,1,1,2,2	-2.0053	-0.5462	-0.2783	-0.1297	-0.0904	-0.0699	-0.0471
8	0,1,1,1,2,3	-1.6348	-0.4317	-0.1899	-0.0840	-0.0596	-0.0478	-0.0280
9	0,1,1,2,2,3	-1.3379	-0.3295	-0.1379	-0.0761	-0.0511	-0.0380	-0.0314
10	0,1,1,2,2,3	-1.0474	-0.2883	-0.1291	-0.0851	-0.0641	-0.0464	-0.0377
11	0,1,1,2,2,4	-0.8739	-0.2214	-0.0947	-0.0631	-0.0504	-0.0322	-0.0240
12	0,1,1,2,3,4	-0.7315	-0.1696	-0.0731	-0.0500	-0.0413	-0.0291	-0.0202
13	0,1,2,2,3,4	-0.6098	-0.1286	-0.0677	-0.0448	-0.0357	-0.0267	-0.0232
14	0,1,2,2,3,5	-0.5161	-0.1025	-0.0508	-0.0368	-0.0266	-0.0230	-0.0163

Table 15 Numerical results per iteration for scenario L_1, T_3, O_4 of the 8-machine line, under the EB policy

Iter.	C_1-C_7	Eigenvalues of Hessian matrix						
0	0,0,0,0,0,0	-23.8408	-12.5923	-4.3866	-3.4782	-2.2200	-1.8642	-0.3470
1	0,0,0,0,0,1	-17.4370	-13.7149	-4.8671	-3.5084	-2.8667	-1.3116	-0.1313
2	0,0,0,0,0,2	-16.9519	-11.1042	-4.3646	-3.0398	-1.4437	-0.3429	-0.0436
3	0,0,0,0,1,2	-16.7244	-8.1541	-3.6225	-1.8898	-0.5931	-0.1213	-0.0438
4	0,0,0,0,1,1,2	-15.4843	-5.9952	-2.6628	-1.0225	-0.3453	-0.1225	-0.0876
5	0,0,0,0,1,1,3	-13.2761	-4.5250	-1.8592	-0.5792	-0.1663	-0.0711	-0.0321
6	0,0,0,1,1,1,3	-11.2674	-3.3252	-1.2142	-0.4660	-0.1643	-0.1121	-0.0543
7	0,0,0,1,1,2,3	-9.2518	-2.5074	-0.8137	-0.2587	-0.1111	-0.0806	-0.0483
8	0,0,0,1,1,2,4	-7.4863	-1.9075	-0.5558	-0.1588	-0.0711	-0.0507	-0.0281
9	0,0,1,1,1,2,4	-6.1671	-1.3785	-0.4774	-0.1681	-0.1074	-0.0706	-0.0403
10	0,0,1,1,2,2,4	-5.0534	-1.0266	-0.3241	-0.1421	-0.0882	-0.0567	-0.0475
11	0,0,1,1,2,2,5	-4.1370	-0.7888	-0.2176	-0.0929	-0.0642	-0.0390	-0.0312
12	0,0,1,1,2,3,5	-3.4253	-0.5931	-0.1493	-0.0686	-0.0521	-0.0357	-0.0250
13	0,1,1,1,2,3,5	-2.8198	-0.4742	-0.1708	-0.1011	-0.0709	-0.0450	-0.0308
14	0,1,1,1,2,3,6	-2.3651	-0.3527	-0.1255	-0.0731	-0.0503	-0.0310	-0.0214

Table 16 Numerical results per iteration for scenario L_1, T_3, O_5 of the 8-machine line, under the EB policy

Iter.	C_1-C_7	Eigenvalues of Hessian matrix						
0	0,0,0,0,0,0	-47.1693	-24.8294	-8.6623	-6.8536	-4.3611	-3.6756	-0.6090
1	0,0,0,0,0,1	-34.5179	-27.0733	-9.6008	-6.9138	-5.6419	-2.5553	-0.2325
2	0,0,0,0,0,2	-33.5927	-21.9507	-8.6059	-5.9748	-2.8044	-0.6215	-0.0539
3	0,0,0,0,1,2	-33.1601	-16.0993	-7.1241	-3.6838	-1.1124	-0.1908	-0.0716
4	0,0,0,0,1,1,2	-30.6971	-11.8158	-5.2155	-1.9636	-0.6416	-0.2071	-0.1527
5	0,0,0,0,1,1,3	-26.3303	-8.9032	-3.6221	-1.0832	-0.2766	-0.1048	-0.0475
6	0,0,0,0,1,2,3	-22.0469	-6.6617	-2.4074	-0.6064	-0.1650	-0.0882	-0.0424
7	0,0,0,1,1,2,3	-18.3336	-4.9046	-1.5549	-0.4708	-0.1916	-0.1281	-0.0740
8	0,0,0,1,1,2,4	-14.8330	-3.7182	-1.0461	-0.2690	-0.1059	-0.0734	-0.0414
9	0,0,1,1,1,2,4	-12.2170	-2.6756	-0.9056	-0.2967	-0.1818	-0.1162	-0.0643
10	0,0,1,1,1,2,5	-9.9407	-2.0356	-0.5925	-0.1970	-0.1219	-0.0700	-0.0318
11	0,0,1,1,2,2,5	-8.1877	-1.5111	-0.3950	-0.1553	-0.0996	-0.0566	-0.0478
12	0,0,1,1,2,2,6	-6.7257	-1.1417	-0.2631	-0.1052	-0.0726	-0.0407	-0.0221
13	0,0,1,1,2,3,6	-5.5911	-0.8462	-0.1754	-0.0759	-0.0544	-0.0345	-0.0239
14	0,1,1,1,2,3,6	-4.6763	-0.6591	-0.2216	-0.1218	-0.0807	-0.0444	-0.0307
15	0,1,1,1,2,3,7	-3.9487	-0.4648	-0.1578	-0.0847	-0.0537	-0.0298	-0.0186

Table 17 Numerical results per iteration for scenario L_1, T_3, O_6 of the 8-machine line, under the EB policy

Iter.	C_1-C_7	Eigenvalues of Hessian matrix						
0	0,0,0,0,0,0	-2.8512	-1.5709	-0.5395	-0.4367	-0.3035	-0.2286	-0.1120
1	0,0,0,0,0,1	-2.0622	-1.6662	-0.6018	-0.4358	-0.3613	-0.1962	-0.0391
2	0,0,0,0,1,1	-2.0369	-1.3004	-0.5320	-0.3868	-0.2128	-0.0798	-0.0338
3	0,0,0,0,1,1,1	-2.0414	-0.9255	-0.4364	-0.2572	-0.1466	-0.0689	-0.0483
4	0,0,0,0,1,1,2	-1.7925	-0.7083	-0.3460	-0.1712	-0.0873	-0.0401	-0.0230
5	0,0,0,1,1,1,2	-1.5833	-0.5157	-0.2440	-0.1409	-0.0689	-0.0494	-0.0335
6	0,0,1,1,1,1,2	-1.3122	-0.3855	-0.2358	-0.1136	-0.0755	-0.0603	-0.0453
7	0,0,1,1,1,2,2	-1.0872	-0.2805	-0.1552	-0.0818	-0.0608	-0.0503	-0.0347
8	0,0,1,1,1,2,3	-0.8817	-0.2194	-0.1103	-0.0582	-0.0451	-0.0374	-0.0206
9	0,1,1,1,1,2,3	-0.6792	-0.2004	-0.0908	-0.0605	-0.0506	-0.0432	-0.0256
10	0,1,1,1,2,2,3	-0.5649	-0.1383	-0.0736	-0.0523	-0.0430	-0.0331	-0.0289
11	0,1,1,1,2,2,4	-0.4688	-0.1038	-0.0547	-0.0412	-0.0373	-0.0261	-0.0178
12	0,1,1,1,2,3,4	-0.3931	-0.0769	-0.0424	-0.0339	-0.0320	-0.0227	-0.0162
13	0,1,1,2,2,3,4	-0.3277	-0.0550	-0.0393	-0.0293	-0.0266	-0.0216	-0.0184
14	0,1,1,2,2,3,5	-0.2763	-0.0423	-0.0303	-0.0265	-0.0210	-0.0196	-0.0124
15	1,1,1,2,2,2,5	-0.2469	-0.0558	-0.0380	-0.0285	-0.0272	-0.0225	-0.0144

Table 18 Numerical results per iteration for scenario L_1, T_3, O_7 of the 8-machine line, under the EB policy

Iter.	C_1-C_7	Eigenvalues of Hessian matrix						
0	0,0,0,0,0,0	-5.7708	-3.1286	-1.0742	-0.8717	-0.5545	-0.4645	-0.1259
1	0,0,0,0,0,1	-4.2162	-3.3955	-1.2064	-0.8831	-0.7246	-0.3449	-0.0521
2	0,0,0,0,1,1	-4.1362	-2.7552	-1.0983	-0.7752	-0.3802	-0.1214	-0.0525
3	0,0,0,0,1,1,1	-4.1615	-1.9939	-0.9046	-0.4906	-0.2612	-0.1119	-0.0738
4	0,0,0,0,1,1,2	-3.6958	-1.5522	-0.7117	-0.3020	-0.1231	-0.0545	-0.0335
5	0,0,0,1,1,1,2	-3.2608	-1.1512	-0.4976	-0.2556	-0.1061	-0.0718	-0.0498
6	0,0,0,1,1,1,3	-2.6967	-0.9085	-0.3578	-0.1551	-0.0718	-0.0532	-0.0251
7	0,0,1,1,1,1,3	-2.2291	-0.6743	-0.3326	-0.1358	-0.0875	-0.0721	-0.0317
8	0,0,1,1,1,2,3	-1.8332	-0.5304	-0.2245	-0.0950	-0.0655	-0.0507	-0.0294
9	0,0,1,1,2,2,3	-1.5011	-0.4146	-0.1643	-0.0852	-0.0563	-0.0401	-0.0331
10	0,0,1,1,2,2,4	-1.2301	-0.3389	-0.1208	-0.0611	-0.0461	-0.0294	-0.0209
11	0,1,1,1,2,2,4	-0.9869	-0.2882	-0.1168	-0.0742	-0.0563	-0.0343	-0.0249
12	0,1,1,1,2,3,4	-0.8280	-0.2289	-0.0924	-0.0589	-0.0454	-0.0306	-0.0210
13	0,1,1,2,2,3,4	-0.6919	-0.1805	-0.0841	-0.0541	-0.0390	-0.0291	-0.0240
14	0,1,1,2,2,3,5	-0.5882	-0.1498	-0.0655	-0.0441	-0.0292	-0.0244	-0.0167
15	0,1,2,2,2,3,5	-0.4902	-0.1289	-0.0661	-0.0378	-0.0284	-0.0257	-0.0189
16	0,1,2,2,3,3,5	-0.4206	-0.1047	-0.0583	-0.0356	-0.0246	-0.0219	-0.0194
17	0,1,2,2,3,3,6	-0.3659	-0.0877	-0.0463	-0.0292	-0.0220	-0.0178	-0.0142
18	1,1,1,2,3,3,6	-0.3316	-0.0954	-0.0535	-0.0376	-0.0255	-0.0177	-0.0147

Table 19 Numerical results per iteration for scenario L_1, T_3, O_8 of the 8-machine line, under the EB policy

Iter.	C_1-C_7	Eigenvalues of Hessian matrix						
0	0,0,0,0,0,0	-1.3838	-0.8140	-0.2709	-0.2312	-0.1679	-0.1166	-0.0821
1	0,0,0,0,0,1	-0.9953	-0.8367	-0.3066	-0.2256	-0.1886	-0.1176	-0.0311
2	0,0,0,0,1,1	-0.9784	-0.6392	-0.2743	-0.2082	-0.1310	-0.0596	-0.0212
3	0,0,0,1,1,1	-0.9720	-0.4638	-0.2334	-0.1522	-0.0927	-0.0431	-0.0330
4	0,0,1,1,1,1	-0.9018	-0.3333	-0.1859	-0.1368	-0.0726	-0.0531	-0.0424
5	0,0,1,1,1,2	-0.7479	-0.2698	-0.1443	-0.0939	-0.0498	-0.0387	-0.0225
6	0,1,1,1,1,2	-0.6238	-0.2023	-0.1322	-0.0731	-0.0515	-0.0436	-0.0296
7	0,1,1,1,1,2	-0.4510	-0.2197	-0.1031	-0.0667	-0.0549	-0.0431	-0.0358
8	0,1,1,1,2,2	-0.3891	-0.1450	-0.0753	-0.0520	-0.0451	-0.0402	-0.0292
9	0,1,1,1,2,3	-0.3220	-0.1091	-0.0587	-0.0429	-0.0378	-0.0332	-0.0169
10	0,1,1,2,2,3	-0.2700	-0.0802	-0.0473	-0.0378	-0.0343	-0.0241	-0.0201
11	0,1,1,2,3,3	-0.2273	-0.0637	-0.0379	-0.0321	-0.0318	-0.0234	-0.0157
12	0,1,1,2,3,4	-0.1908	-0.0534	-0.0335	-0.0296	-0.0266	-0.0177	-0.0110
13	0,1,2,2,3,4	-0.1604	-0.0419	-0.0281	-0.0267	-0.0199	-0.0188	-0.0128
14	1,1,2,2,3,4	-0.1173	-0.0315	-0.0272	-0.0216	-0.0207	-0.0189	-0.0140
15	1,1,2,2,3,5	-0.1011	-0.0261	-0.0246	-0.0193	-0.0187	-0.0170	-0.0090
16	1,1,2,2,2,5	-0.1155	-0.0344	-0.0279	-0.0229	-0.0217	-0.0195	-0.0095

Table 20 Numerical results per iteration for scenario L_1, T_3, O_9 of the 8-machine line, under the EB policy

Iter.	C_1-C_7	Eigenvalues of Hessian matrix						
0	0,0,0,0,0,0	-2.8455	-1.5827	-0.5384	-0.4419	-0.2953	-0.2339	-0.1034
1	0,0,0,0,0,1	-2.0650	-1.6925	-0.6068	-0.4437	-0.3687	-0.1930	-0.0389
2	0,0,0,0,1,1	-2.0300	-1.3452	-0.5486	-0.3975	-0.2136	-0.0795	-0.0332
3	0,0,0,1,1,1	-2.0348	-0.9739	-0.4571	-0.2643	-0.1465	-0.0679	-0.0482
4	0,0,0,1,1,2	-1.7930	-0.7570	-0.3656	-0.1769	-0.0887	-0.0404	-0.0229
5	0,0,1,1,1,2	-1.5854	-0.5634	-0.2615	-0.1457	-0.0701	-0.0502	-0.0328
6	0,1,1,1,1,2	-1.3159	-0.4259	-0.2522	-0.1182	-0.0770	-0.0628	-0.0437
7	0,1,1,1,2,2	-1.0925	-0.3236	-0.1700	-0.0846	-0.0613	-0.0520	-0.0341
8	0,1,1,1,2,3	-0.8903	-0.2610	-0.1237	-0.0622	-0.0470	-0.0378	-0.0199
9	0,1,1,1,2,3	-0.6862	-0.2371	-0.1033	-0.0663	-0.0544	-0.0432	-0.0244
10	0,1,1,2,2,3	-0.5726	-0.1743	-0.0834	-0.0578	-0.0470	-0.0324	-0.0282
11	0,1,1,2,2,4	-0.4785	-0.1387	-0.0653	-0.0461	-0.0399	-0.0264	-0.0170
12	0,1,2,2,2,4	-0.3970	-0.1087	-0.0621	-0.0404	-0.0317	-0.0250	-0.0196
13	1,1,2,2,2,4	-0.2873	-0.0985	-0.0600	-0.0431	-0.0343	-0.0263	-0.0216
14	1,1,2,2,3,4	-0.2478	-0.0749	-0.0477	-0.0372	-0.0290	-0.0234	-0.0189
15	1,2,2,2,3,4	-0.2029	-0.0732	-0.0410	-0.0328	-0.0262	-0.0219	-0.0206
16	1,2,2,2,3,5	-0.1778	-0.0567	-0.0345	-0.0268	-0.0217	-0.0201	-0.0143
17	1,2,2,3,3,5	-0.1548	-0.0454	-0.0307	-0.0248	-0.0186	-0.0166	-0.0154

Table 21 Numerical results per iteration for scenario L_1, T_3, O_{10} of the 8-machine line, under the EB policy

Iter.	C_1-C_7	Eigenvalues of Hessian matrix						
0	0,0,0,0,0,0	-2.8455	-1.5827	-0.5384	-0.4419	-0.2953	-0.2339	-0.1034
1	0,0,0,0,0,1	-2.0650	-1.6925	-0.6068	-0.4437	-0.3687	-0.1930	-0.0389
2	0,0,0,0,1,1	-2.0300	-1.3452	-0.5486	-0.3975	-0.2136	-0.0795	-0.0332
3	0,0,0,0,1,1	-2.0348	-0.9739	-0.4571	-0.2643	-0.1465	-0.0679	-0.0482
4	0,0,0,0,1,2	-1.7930	-0.7570	-0.3656	-0.1769	-0.0887	-0.0404	-0.0229
5	0,0,0,1,1,2	-1.5854	-0.5634	-0.2615	-0.1457	-0.0701	-0.0502	-0.0328
6	0,0,1,1,1,2	-1.3159	-0.4259	-0.2522	-0.1182	-0.0770	-0.0628	-0.0437
7	0,0,1,1,1,2	-1.0925	-0.3236	-0.1700	-0.0846	-0.0613	-0.0520	-0.0341
8	0,0,1,1,1,2	-0.8903	-0.2610	-0.1237	-0.0622	-0.0470	-0.0378	-0.0199
9	0,1,1,1,1,2	-0.6862	-0.2371	-0.1033	-0.0663	-0.0544	-0.0432	-0.0244
10	0,1,1,1,2,2	-0.5726	-0.1743	-0.0834	-0.0578	-0.0470	-0.0324	-0.0282
11	0,1,1,1,2,2	-0.4785	-0.1387	-0.0653	-0.0461	-0.0399	-0.0264	-0.0170
12	0,1,1,2,2,2	-0.3970	-0.1087	-0.0621	-0.0404	-0.0317	-0.0250	-0.0196
13	1,1,1,2,2,2	-0.2873	-0.0985	-0.0600	-0.0431	-0.0343	-0.0263	-0.0216
14	1,1,1,2,2,3	-0.2478	-0.0749	-0.0477	-0.0372	-0.0290	-0.0234	-0.0189
15	1,1,1,2,2,3	-0.2139	-0.0614	-0.0396	-0.0323	-0.0233	-0.0205	-0.0131
16	1,1,1,2,2,5	-0.2467	-0.0771	-0.0488	-0.0376	-0.0288	-0.0236	-0.0138

Table 22 Numerical results per iteration for scenario L_1, T_3, O_{11} of the 8-machine line, under the EB policy

Iter.	C_1-C_7	Eigenvalues of Hessian matrix						
0	0,0,0,0,0,0	-2.8455	-1.5827	-0.5384	-0.4419	-0.2953	-0.2339	-0.1034
1	0,0,0,0,0,1	-2.0650	-1.6925	-0.6068	-0.4437	-0.3687	-0.1930	-0.0389
2	0,0,0,0,1,1	-2.0300	-1.3452	-0.5486	-0.3975	-0.2136	-0.0795	-0.0332
3	0,0,0,0,1,1	-2.0348	-0.9739	-0.4571	-0.2643	-0.1465	-0.0679	-0.0482
4	0,0,0,0,1,2	-1.7930	-0.7570	-0.3656	-0.1769	-0.0887	-0.0404	-0.0229
5	0,0,0,1,1,2	-1.5854	-0.5634	-0.2615	-0.1457	-0.0701	-0.0502	-0.0328
6	0,0,1,1,1,2	-1.3159	-0.4259	-0.2522	-0.1182	-0.0770	-0.0628	-0.0437
7	0,0,1,1,1,2	-1.0925	-0.3236	-0.1700	-0.0846	-0.0613	-0.0520	-0.0341
8	0,0,1,1,1,2	-0.8903	-0.2610	-0.1237	-0.0622	-0.0470	-0.0378	-0.0199
9	0,1,1,1,1,2	-0.6862	-0.2371	-0.1033	-0.0663	-0.0544	-0.0432	-0.0244
10	0,1,1,1,2,2	-0.5726	-0.1743	-0.0834	-0.0578	-0.0470	-0.0324	-0.0282
11	0,1,1,1,2,2	-0.4785	-0.1387	-0.0653	-0.0461	-0.0399	-0.0264	-0.0170
12	0,1,1,1,2,2	-0.4785	-0.1387	-0.0653	-0.0461	-0.0399	-0.0264	-0.0170

Appendix 2: Additional numerical results for the 20-machine line with randomly chosen input parameters

Table 23 shows the randomly generated parameter values for instances 41–80 of the 20-machine line, and Table 24 and shows the optimization results for all these instances.

Table 23 Values of production rates $p_n, n = 1, \dots, N$, and basic parameters I_c, I_h, I_r, I_b, I_v and I_t for instances 41–80 of the 20-machine line

#	P_1	P_2	P_3	P_4	P_5	P_6	P_7	P_8	P_9	P_{10}	P_{11}	P_{12}	P_{13}	P_{14}	P_{15}	P_{16}	P_{17}	P_{18}	P_{19}	P_{20}	I_c	I_h	I_r	I_b	I_v	I_t
41	0.35	0.20	0.33	0.64	0.59	0.62	0.55	0.65	0.78	0.67	0.54	0.53	0.23	0.70	0.20	0.27	0.39	0.56	0.61	0.66	0.8	0.005	0.47	1.4	0.62	0.006
42	0.55	0.61	0.62	0.49	0.43	0.26	0.40	0.34	0.34	0.27	0.31	0.23	0.24	0.28	0.64	0.46	0.73	0.23	0.49	0.39	1.1	0.002	0.34	1.4	0.63	0.001
43	0.27	0.80	0.37	0.38	0.74	0.52	0.32	0.20	0.53	0.52	0.44	0.49	0.27	0.33	0.40	0.48	0.49	0.43	0.32	0.66	1.4	0.005	0.50	1.7	0.62	0.005
44	0.64	0.66	0.20	0.50	0.79	0.67	0.51	0.20	0.31	0.80	0.32	0.74	0.30	0.47	0.61	0.47	0.49	0.58	0.26	0.47	1.3	0.005	0.47	1.8	0.70	0.006
45	0.23	0.37	0.25	0.35	0.46	0.33	0.65	0.64	0.71	0.54	0.32	0.51	0.66	0.35	0.73	0.80	0.31	0.59	0.72	0.58	1.7	0.004	0.31	1.1	0.81	0.004
46	0.25	0.21	0.51	0.22	0.71	0.63	0.33	0.22	0.39	0.39	0.58	0.64	0.39	0.51	0.65	0.61	0.36	0.65	0.30	0.40	0.8	0.002	0.50	1.5	0.73	0.016
47	0.23	0.50	0.42	0.51	0.49	0.68	0.45	0.38	0.78	0.31	0.27	0.64	0.28	0.66	0.38	0.29	0.74	0.64	0.58	0.39	1.7	0.003	0.26	0.8	0.79	0.011
48	0.69	0.21	0.23	0.39	0.64	0.44	0.45	0.21	0.27	0.36	0.44	0.67	0.49	0.76	0.38	0.50	0.54	0.22	0.32	0.79	2.0	0.005	0.42	0.8	0.67	0.019
49	0.41	0.25	0.51	0.41	0.50	0.67	0.55	0.27	0.63	0.21	0.74	0.39	0.67	0.60	0.52	0.60	0.66	0.26	0.60	0.80	0.8	0.003	0.24	1.1	0.79	0.001
50	0.21	0.36	0.65	0.23	0.79	0.54	0.65	0.61	0.44	0.75	0.31	0.26	0.24	0.77	0.47	0.64	0.79	0.57	0.73	0.38	1.3	0.002	0.29	1.5	0.79	0.014
51	0.34	0.42	0.55	0.49	0.47	0.20	0.59	0.63	0.44	0.21	0.29	0.78	0.56	0.25	0.49	0.44	0.45	0.54	0.54	0.73	1.3	0.002	0.24	1.9	0.62	0.020
52	0.41	0.50	0.69	0.38	0.77	0.36	0.53	0.74	0.68	0.77	0.48	0.23	0.66	0.46	0.27	0.59	0.50	0.50	0.63	0.72	1.1	0.005	0.36	0.6	0.80	0.006
53	0.55	0.44	0.36	0.62	0.50	0.35	0.31	0.34	0.36	0.21	0.65	0.72	0.79	0.64	0.70	0.75	0.45	0.74	0.69	0.57	0.5	0.002	0.35	0.6	0.83	0.006
54	0.22	0.62	0.41	0.49	0.71	0.32	0.49	0.29	0.77	0.67	0.47	0.55	0.25	0.41	0.79	0.76	0.29	0.49	0.29	0.20	1.4	0.003	0.40	0.6	0.64	0.013
55	0.77	0.71	0.80	0.62	0.75	0.78	0.24	0.60	0.27	0.76	0.72	0.42	0.60	0.45	0.50	0.79	0.55	0.66	0.37	0.49	0.7	0.003	0.34	2.0	0.72	0.009
56	0.34	0.30	0.57	0.58	0.76	0.63	0.48	0.69	0.36	0.41	0.66	0.43	0.38	0.59	0.46	0.36	0.52	0.50	0.50	0.56	1.2	0.005	0.43	0.5	0.84	0.018
57	0.64	0.74	0.50	0.70	0.26	0.54	0.65	0.30	0.48	0.58	0.46	0.70	0.60	0.36	0.48	0.70	0.24	0.44	0.33	0.21	0.4	0.002	0.36	0.6	0.73	0.009
58	0.59	0.34	0.33	0.36	0.20	0.47	0.47	0.68	0.58	0.70	0.75	0.30	0.29	0.69	0.51	0.25	0.57	0.37	0.24	0.29	1.8	0.001	0.43	2.0	0.87	0.005
59	0.31	0.61	0.61	0.66	0.21	0.69	0.45	0.30	0.43	0.31	0.38	0.20	0.47	0.76	0.62	0.55	0.74	0.59	0.60	0.69	0.9	0.003	0.45	1.1	0.62	0.006
60	0.59	0.30	0.44	0.50	0.76	0.76	0.58	0.33	0.22	0.59	0.69	0.31	0.39	0.72	0.38	0.61	0.31	0.58	0.62	0.31	0.9	0.001	0.31	1.4	0.86	0.020
61	0.54	0.41	0.51	0.64	0.51	0.29	0.68	0.36	0.38	0.60	0.37	0.73	0.69	0.68	0.63	0.55	0.70	0.23	0.54	0.45	1.0	0.002	0.27	1.0	0.80	0.014
62	0.55	0.73	0.25	0.63	0.73	0.67	0.60	0.79	0.35	0.43	0.80	0.43	0.22	0.47	0.47	0.38	0.34	0.22	0.57	0.21	0.6	0.001	0.25	1.1	0.65	0.012
63	0.75	0.57	0.44	0.80	0.23	0.30	0.66	0.55	0.54	0.30	0.70	0.23	0.40	0.51	0.20	0.72	0.43	0.80	0.57	0.65	0.6	0.005	0.34	1.6	0.61	0.016
64	0.46	0.39	0.27	0.67	0.42	0.31	0.43	0.64	0.57	0.70	0.24	0.79	0.20	0.42	0.55	0.47	0.56	0.36	0.68	0.36	1.5	0.001	0.20	0.8	0.65	0.020
65	0.77	0.28	0.45	0.64	0.77	0.20	0.32	0.55	0.67	0.61	0.54	0.46	0.69	0.50	0.73	0.47	0.77	0.49	0.76	0.34	1.1	0.001	0.22	1.5	0.79	0.020

Table 23 (continued)

#	P_1	P_2	P_3	P_4	P_5	P_6	P_7	P_8	P_9	P_{10}	P_{11}	P_{12}	P_{13}	P_{14}	P_{15}	P_{16}	P_{17}	P_{18}	P_{19}	P_{20}	I_c	I_h	I_r	I_b	I_v	I_t
66	0.41	0.80	0.69	0.33	0.41	0.32	0.45	0.27	0.62	0.61	0.59	0.49	0.56	0.54	0.52	0.40	0.31	0.58	0.26	0.75	1.4	0.001	0.27	1.5	0.76	0.015
67	0.22	0.58	0.51	0.70	0.47	0.57	0.72	0.42	0.59	0.30	0.76	0.61	0.50	0.30	0.29	0.54	0.22	0.53	0.80	0.64	1.3	0.001	0.31	1.8	0.62	0.015
68	0.72	0.27	0.79	0.42	0.42	0.68	0.32	0.80	0.23	0.74	0.67	0.37	0.54	0.76	0.55	0.63	0.55	0.30	0.68	0.22	0.5	0.001	0.27	1.6	0.69	0.007
69	0.60	0.56	0.37	0.25	0.53	0.80	0.63	0.44	0.38	0.77	0.50	0.59	0.37	0.26	0.64	0.52	0.53	0.37	0.33	0.34	1.0	0.001	0.27	1.4	0.71	0.012
70	0.79	0.77	0.39	0.35	0.56	0.76	0.57	0.20	0.37	0.75	0.66	0.48	0.20	0.58	0.33	0.24	0.31	0.56	0.64	0.55	0.7	0.003	0.41	1.1	0.85	0.012
71	0.63	0.77	0.25	0.53	0.26	0.49	0.54	0.38	0.20	0.25	0.57	0.68	0.40	0.60	0.22	0.46	0.66	0.73	0.65	0.46	1.7	0.001	0.29	1.4	0.85	0.020
72	0.62	0.51	0.32	0.51	0.25	0.53	0.55	0.61	0.55	0.78	0.64	0.40	0.57	0.66	0.71	0.70	0.51	0.22	0.49	0.67	0.7	0.004	0.22	0.6	0.67	0.008
73	0.51	0.76	0.29	0.51	0.41	0.66	0.75	0.52	0.36	0.79	0.27	0.48	0.29	0.61	0.28	0.61	0.76	0.51	0.31	0.29	0.6	0.002	0.44	0.5	0.66	0.012
74	0.23	0.59	0.65	0.25	0.72	0.47	0.80	0.39	0.58	0.37	0.29	0.75	0.77	0.67	0.33	0.33	0.40	0.48	0.73	0.49	1.8	0.002	0.39	1.2	0.74	0.018
75	0.48	0.59	0.41	0.76	0.62	0.30	0.47	0.59	0.46	0.29	0.71	0.20	0.76	0.64	0.33	0.25	0.59	0.64	0.51	0.25	1.2	0.001	0.31	1.9	0.72	0.016
76	0.29	0.63	0.44	0.26	0.33	0.32	0.77	0.53	0.32	0.47	0.37	0.59	0.25	0.41	0.57	0.41	0.72	0.78	0.48	0.27	1.8	0.002	0.47	0.8	0.65	0.014
77	0.72	0.37	0.57	0.78	0.47	0.38	0.40	0.67	0.65	0.25	0.63	0.72	0.36	0.71	0.73	0.75	0.75	0.72	0.35	0.21	1.7	0.004	0.43	1.3	0.65	0.018
78	0.55	0.21	0.72	0.52	0.68	0.22	0.64	0.39	0.54	0.71	0.45	0.23	0.67	0.44	0.63	0.68	0.35	0.45	0.71	0.54	1.9	0.005	0.39	0.6	0.85	0.005
79	0.77	0.27	0.44	0.63	0.26	0.26	0.56	0.30	0.61	0.41	0.36	0.72	0.28	0.73	0.73	0.78	0.58	0.26	0.37	0.78	1.6	0.001	0.35	1.4	0.88	0.009
80	0.62	0.26	0.43	0.21	0.39	0.65	0.29	0.46	0.36	0.51	0.33	0.76	0.32	0.37	0.43	0.41	0.34	0.61	0.49	0.47	1.3	0.003	0.50	0.8	0.70	0.011

Table 24 Numerical results for instances 41–80 of the 20-machine line

#	IB	EB			CW			%ΔP*						
		P*	cpu	iter	C*	P*	cpu		iter					
	C_{1-19}^*				C_{1-19}^*				E-I	E-C				
41	0,2,0,0,0,0,0,0,0,0,0,1,1,2,1,0,0,0	52.63	26.4	7,68,0	0,0,0,0,0,0,0,0,0,0,0,1,0,1,2,2,1,1,2	58.81	8.5	10,0,0	10	58.72	0.2	10,0,0	11.7	0.17
42	0,0,0,0,0,1,1,1,2,2,3,3,2,1,0,1,1,1	74.02	50.9	22,0,0	0,0,0,0,0,0,0,0,0,0,1,2,3,2,1,0,1,2,4	82.52	31.3	16,0,1	16	82.48	0.9	16,0,0	11.5	0.05
43	0,0,0,0,0,2,1,0,0,0,1,1,1,1,0,0,1,1	111.40	18.3	9,0,0	0,0,0,0,0,0,0,0,1,0,1,1,1,1,1,1,1,3	123.19	12.2	12,0,0	12	123.08	0.4	12,0,0	10.6	0.09
44	0,1,1,0,0,0,1,2,1,1,1,1,1,0,0,0,1,1	88.76	118.1	17,109,3	0,0,0,0,0,0,0,0,0,1,0,1,1,0,1,1,0,2,4	96.88	15.6	11,0,1	10	96.79	0.3	10,0,0	9.1	0.09
45	2,2,2,1,1,1,0,0,0,1,1,1,1,0,1,1,0,0	104.58	38.2	16,0,0	0,0,1,1,1,0,0,0,0,1,1,0,2,1,0,2,1,3	113.94	31.1	16,0,1	16	113.80	0.8	16,0,0	9.0	0.13
46	3,3,3,2,0,1,3,3,2,1,0,0,1,1,0,0,1,2,2	107.87	88.9	28,0,0	0,1,1,0,0,1,3,1,1,1,1,1,1,1,1,2,1,2,4	117.49	51.2	23,0,0	23	116.74	2.9	23,0,0	8.9	0.64
47	2,0,1,1,0,0,1,1,1,2,2,2,2,1,2,2,0,0,1	82.67	50.2	21,11,0	0,0,0,0,0,0,0,0,1,1,0,2,0,1,2,1,1,2,3	90.04	16.7	14,0,0	14	89.72	0.6	14,0,0	8.9	0.35
48	0,2,1,1,0,0,1,2,2,1,1,0,0,0,0,1,1,2,1	114.00	39.7	16,14,0	0,0,0,0,0,0,1,1,1,1,0,0,0,1,0,0,2,3,2	123.44	17.6	12,0,1	12	122.98	0.4	12,0,0	8.3	0.37
49	1,1,0,0,1,0,1,1,1,1,1,0,0,0,0,0,1,1,0	30.86	388.7	27,186,17	0,0,0,0,0,0,0,0,1,1,1,1,0,1,1,0,1,0,1,2,2	33.23	21.2	11,7,2	11	33.20	0.3	11,7,0	7.7	0.09
50	2,1,1,2,0,0,0,1,0,1,2,3,2,0,0,1,0,0,0	89.76	66.7	16,0,1	0,0,1,0,0,0,1,0,1,2,3,1,1,1,1,1,1,2,2	96.15	25.4	17,0,0	17	95.68	1.0	17,0,0	7.1	0.48
51	0,0,0,0,1,1,0,0,1,2,1,0,1,1,0,0,0,0,0	56.74	39.6	5,0,4	0,0,0,0,0,0,0,2,1,0,0,2,1,1,1,1,1,1,2	60.63	11.1	12,0,0	12	60.15	0.3	12,0,0	6.9	0.79
52	0,0,0,1,1,1,0,0,0,2,2,1,2,2,1,1,1,1,1	74.79	41.8	17,7,0	0,0,0,0,0,0,0,0,0,1,0,1,2,1,1,1,1,2,2	79.69	9.8	11,3,0	11	79.56	0.3	11,4,0	6.6	0.16
53	0,1,1,0,1,2,3,3,4,3,1,0,0,0,0,0,0,1,1	53.86	41.4	21,0,0	0,0,0,0,1,1,1,0,1,0,1,1,1,1,2,1,1,2	57.29	27.7	15,0,1	15	57.12	0.5	15,0,0	6.4	0.31

Table 24 (continued)

#	IB	EB			CW			%ΔP*						
		P*	cpu	iter	P*	cpu	iter	C*	P*	E-I	E-C			
		C_{1-19}^*	C_{1-19}^*	C_{1-19}^*										
54	0,1,1,0,0,1,1,0,0,0,1,2,1,0,0,2,1,3	108.78	74.1	16,0,1	1,0,0,0,0,1,0,0,1,0,1,0,1,0,0,1,1,1,6	115.64	27.9	14,0,1	13	115.28	0.5	13,0,0	6.3	0.31
55	0,0,0,0,0,1,2,2,2,0,0,1,1,1,1,0,0,1,0,1,1	59.82	24.3	13,0,0	0,0,0,0,0,0,0,1,0,0,1,1,1,1,0,1,1,2,3	63.57	11.2	12,0,0	12	63.35	0.3	12,0,0	6.3	0.36
56	3,3,1,1,0,1,1,2,3,2,2,3,2,2,3,3,2,2,2	143.20	83.1	38,11,0	0,1,0,0,0,1,0,1,0,1,1,1,1,2,1,2,2,4	152.01	57.5	19,0,1	19	150.99	1.5	19,0,0	6.2	0.68
57	0,0,0,0,2,0,1,1,1,1,0,0,1,1,1,2,2,3	36.00	88.1	17,0,1	0,0,0,0,0,1,0,0,1,0,0,1,0,0,2,2,2,5	38.21	18.2	14,0,0	14	37.98	0.6	14,0,0	6.1	0.58
58	0,3,3,4,4,2,1,0,1,0,0,4,3,0,2,3,1,3,4	232.68	173.5	38,0,0	0,0,0,1,1,0,0,0,0,1,2,0,1,2,1,1,4,10	246.52	117.6	24,0,1	24	246.34	3.0	24,0,0	5.9	0.08
59	1,0,0,1,2,1,1,2,2,2,3,3,1,0,0,0,0,0,0	96.62	80.0	18,0,2	0,0,0,0,0,0,1,1,1,1,1,1,1,1,1,1,1,1	102.31	24.6	14,0,1	14	102.13	0.4	14,0,0	5.9	0.17
60	1,1,1,1,0,0,2,5,4,1,2,2,1,1,1,2,2,1,1	95.68	114.0	30,0,1	0,0,1,0,0,0,1,0,1,0,2,2,0,2,1,3,2,2,3	97.29	57.7	20,0,1	20	96.45	1.5	20,0,0	1.7	0.87
61	0,1,0,1,1,2,1,2,1,1,1,0,0,0,1,1,2,3,1	73.37	211.4	18,0,5	0,0,0,0,1,0,1,1,1,1,1,0,1,0,1,0,1,2,3	76.82	24.7	14,0,1	13	76.20	0.5	13,0,0	4.7	0.82
62	1,0,1,0,0,0,0,0,1,1,0,2,2,1,1,2,3,3,3	38.33	232.6	18,0,5	0,0,0,0,0,0,1,0,0,0,1,1,1,1,1,1,2,5,3	39.51	27.7	16,0,0	16	39.21	1.0	16,0,0	3.1	0.78
63	0,0,0,0,0,1,0,0,0,0,1,1,0,1,1,0,0,0,0	19.52	30.5	7,71,3	0,0,0,0,0,0,0,0,0,0,1,0,0,2,0,1,0,1,2	20.04	4.2	7,2,0	7	19.89	0.1	7,4,0	2.7	0.76
64	0,1,2,1,2,2,1,1,0,1,3,2,4,1,1,1,1,1,1	80.62	122.5	26,0,0	0,0,0,0,1,0,0,0,1,0,3,1,1,1,1,1,2,2,2	83.53	22.5	16,0,0	16	82.89	0.7	16,0,0	3.6	0.76
65	0,2,2,0,3,6,2,1,0,0,1,1,1,1,1,1,0,0,1	73.64	76.3	24,0,1	0,1,0,0,2,1,0,1,1,1,0,1,1,1,1,1,1,2,2	77.11	26.6	16,0,1	15	76.55	0.7	15,0,0	4.7	0.74
66	1,0,1,2,3,3,4,3,1,1,1,1,1,2,3,4,3,2	132.00	409.6	34,0,4	0,0,0,0,1,1,1,1,1,1,1,0,1,1,2,2,5,3	138.20	95.1	22,0,1	22	137.30	2.6	22,0,0	4.7	0.65

Table 24 (continued)

#	IB	EB			CW			%ΔP*						
		P*	cpu	iter	C [*] -C ₁₉ [*]	P*	cpu	iter	C*	P*	cpu	iter	E-I	E-C
67	2,1,0,0,1,0,1,1,2,0,0,2,3,4,3,4,0,0	127.30	167.6	24,0,2	3,1,0,0,0,0,1,0,1,0,0,1,1,2,1,4,2,2,2	131.88	66.9	21,0,1	20	131.05	1.8	20,0,0	3.6	0.64
68	1,1,0,1,1,1,2,2,0,1,1,1,0,0,1,1,3,2	41.25	278.8	16,0,7	0,0,0,0,0,1,0,1,1,1,2,1,0,1,0,0,2,4,3	42.22	44.9	17,0,1	16	41.96	0.9	16,0,0	2.4	0.62
69	1,1,4,4,1,0,1,2,1,1,1,2,4,3,2,1,2,3,3	94.52	147.9	37,0,0	0,0,0,1,0,0,1,1,0,1,1,1,2,1,1,1,1,2,3,7	97.88	67.1	23,0,0	22	97.30	2.7	22,0,0	3.6	0.60
70	0,0,0,1,0,0,1,3,1,0,0,2,3,1,2,3,2,0,0	53.95	83.5	21,48,2	0,0,0,0,0,0,1,0,0,1,1,1,1,3,2,2,1,2	56.74	52.3	15,7,2,3	15	56.41	0.6	15,7,4,0	5.2	0.59
71	0,1,2,1,2,1,1,4,8,4,0,0,3,2,3,1,1,0,0	138.66	118.3	35,0,1	0,0,1,0,0,1,1,4,1,1,1,1,2,2,1,1,1,1,2	144.84	54.2	20,0,1	20	144.07	1.4	20,0,0	4.5	0.53
72	0,0,0,1,1,0,0,0,0,0,0,0,0,0,0,0,0,0,0	20.63	13.0	5,0,0	0,0,0,0,0,0,0,1,0,0,1,0,0,0,0,0,0,2,2,2	21.17	8.0	8,0,1	8	21.06	0.2	8,0,0	2.6	0.53
73	0,2,2,1,1,0,1,2,2,2,5,3,4,3,3,1,1,2,5	87.66	256.0	41,0,2	0,0,0,0,0,0,1,0,1,1,2,1,2,1,0,1,3,8	90.96	52.8	21,0,0	21	90.48	2.1	21,0,0	3.8	0.53
74	5,2,2,3,1,1,1,1,3,3,0,0,2,3,3,2,1,1	229.80	264.0	34,0,3	0,0,1,0,1,0,1,1,2,3,0,0,1,2,3,3,2,2,3	236.93	94.6	25,0,1	25	235.91	2.5	25,0,0	3.1	0.43
75	0,0,1,0,1,1,0,1,2,2,3,4,0,1,3,2,1,0,2	105.91	191.0	22,0,5	0,0,0,0,0,0,1,1,0,0,0,1,2,4,3,1,2,3	109.58	47.9	18,0,1	17	109.11	1.0	17,0,0	3.5	0.43
76	2,1,2,5,4,2,1,2,2,2,2,3,5,2,2,2,0,4	273.20	288.4	42,0,2	0,0,2,2,0,1,1,1,1,0,2,4,1,2,2,1,1,4	284.81	104.6	25,0,1	24	283.59	3.6	24,0,0	4.2	0.43
77	0,0,0,0,1,0,0,1,1,0,0,0,1,0,0,0,0,0,2	149.99	16.1	6,0,0	0,0,0,0,0,0,0,1,1,0,1,1,0,1,0,0,1,4	157.55	13.0	10,0,1	10	157.02	0.3	10,0,0	5.0	0.33
78	1,2,0,1,1,2,1,1,0,1,2,2,1,1,0,1,1,1,1	137.47	75.2	20,14,1	0,2,0,0,0,1,1,0,0,0,1,0,1,1,0,2,2,2,2	139.40	36.3	15,54,2	15	138.95	0.6	15,55,0	1.4	0.32
79	1,3,2,3,8,5,3,2,2,2,2,2,3,1,0,0,4,5,1	201.18	259.0	49,0,1	0,1,0,0,3,1,3,1,1,2,0,3,6,0,0,1,1,5,3	207.95	381.3	31,22,4	30	207.33	7.3	30,13,0	3.4	0.30

Table 24 (continued)

#	IB	EB				CW				%ΔP*				
		P^*	cpu	iter	$C_1^* - C_{19}^*$	P^*	cpu	iter	C^*	P^*	E-I	E-C		
80	1,3,4,5,2,2,2,2,1,2,1,1,2,2,2,2,2,2,1,2,1,1,1,1,1,1,0,2,1,1,2,2,2,1,1,1,2,1,1,2,4	179.79	102.7	38,0,0	0,0,0,1,0,1,1,1,1,1,1,0,2,1,1,2,2,1,2,4	186.94	38.9	21,0,0	21	186.38	1.9	21,0,0	4.0	0.3

Appendix 3: Numerical results for the 8-machine line with base production probabilities 0.4 and 0.8

Table 25 shows eight additional scenarios for the production rates of the 8-machine flow line example considered in Sect. 6.2. These scenarios are denoted L_5, \dots, L_{12} and are similar to scenarios L_1, \dots, L_4 shown in Table 5, except that they use a different base production probability than 0.6, which is used in scenarios L_1, \dots, L_4 . More specifically, scenarios L_5, \dots, L_8 use base production probability 0.4, while scenarios L_9, \dots, L_{12} use base production probability 0.8. As in Table 5, the production probabilities of the slowest machine in scenarios L_6 - L_8 and L_{10} - L_{12} are shown bold.

We solved problem (1)-(2) for all combinations of scenarios L_5 - L_{12} , T_1 - T_3 , and O_1 - O_{11} , i.e., for a total of $8 \times 3 \times 11 = 264$ instances. Tables 26, 27, 28, 29, 30, 31, 32 and 33 show the optimization results for all these instances.

Table 25 Production rate scenarios with base production probability 0.4 and 0.8 for the 8-machine line

#	p_1	p_2	p_3	p_4	p_5	p_6	p_7	p_8
L_5	0.4	0.4	0.4	0.4	0.4	0.4	0.4	0.4
L_6	0.4	0.3	0.4	0.4	0.4	0.4	0.4	0.4
L_7	0.4	0.4	0.4	0.4	0.3	0.4	0.4	0.4
L_8	0.4	0.4	0.4	0.4	0.4	0.4	0.3	0.4
L_9	0.8	0.8	0.8	0.8	0.8	0.8	0.8	0.8
L_{10}	0.8	0.7	0.8	0.8	0.8	0.8	0.8	0.8
L_{11}	0.8	0.8	0.8	0.8	0.7	0.8	0.8	0.8
L_{12}	0.8	0.8	0.8	0.8	0.8	0.8	0.7	0.8

Table 26 Numerical results for scenario L_5 of the 8-machine line

Scen.	IB		EB				CW				% ΔP^*				
	C_1^*	C_7^*	cpu	iter	P^*	C_1^*	C_7^*	cpu	iter	C^*	P^*	cpu	iter	E-I	E-C
T_1															
O_1	3,5,5,5,5,4	3,5,5,5,5,4	0.998	32,293,0	0.1,1,1,2,4,10	5.210	19,229,5	19	5.209	0.21	19,229,0	421.88	0.015		
O_2	3,5,5,5,5,4	3,5,5,5,5,4	-5.031	32,508,0	0,0,0,0,2,5,12	-2.318	19,417,0	19	-2.318	0.18	19,417,0	53.92	0.000		
O_3	3,5,5,5,5,4	3,5,5,5,5,4	7.028	32,242,0	1,1,1,0,2,4,10	12.742	19,191,6	19	12.737	0.18	19,191,0	81.31	0.041		
O_4	3,5,5,5,5,4	3,5,5,5,5,4	55.263	33,194,2	2,1,0,1,2,3,10	73.037	19,145,5	19	72.956	0.20	19,145,0	32.16	0.111		
O_5	3,5,5,5,5,4	3,5,5,5,5,4	115.557	33,185,2	2,1,0,1,2,3,10	148.414	19,138,5	19	148.231	0.18	19,138,0	28.43	0.124		
O_6	3,5,5,5,5,4	3,5,5,5,5,4	-13.990	32,432,0	2,2,1,1,1,3,9	-5.658	19,368,7	19	-5.741	0.19	19,368,0	59.56	1.443		
O_7	3,5,5,5,5,4	3,5,5,5,5,4	16.985	32,154,0	0,0,0,0,0,7,12	21.369	19,900,0	19	21.369	0.18	19,900,0	25.81	0.001		
O_8	3,5,5,5,5,4	3,5,5,5,5,4	-6.995	32,432,0	2,2,1,1,1,3,9	-2.829	19,368,7	19	-2.870	0.19	19,368,0	59.56	1.443		
O_9	2,7,7,6,6,7,7	2,7,7,6,6,7,7	10.855	43,94,1	0,1,1,1,2,4,10	10.910	19,76,3	19	10.909	0.21	19,76,0	0.51	0.007		
O_{10}	3,5,5,5,5,4	3,5,5,5,5,4	5.798	33,224,1	0,1,1,1,2,4,10	8.060	19,167,5	19	8.059	0.18	19,167,0	39.01	0.010		
O_{11}	1,1,1,1,1,1,1	1,1,1,1,1,1,1	6.760	7,0,0	0,0,0,0,0,2,6	7.821	8,0,0	8	7.821	0.03	8,0,0	15.70	0.001		
T_2															
O_1	3,5,5,5,5,4	3,5,5,5,5,4	0.998	32,293,0	1,1,2,2,3,4,6	4.732	19,232,2	19	4.276	0.24	19,237,0	374.03	10.668		
O_2	3,5,5,5,5,4	3,5,5,5,5,4	-5.031	32,508,0	1,2,2,2,3,4,5	-2.764	19,421,2	19	-3.251	0.19	19,432,0	45.06	14.983		
O_3	3,5,5,5,5,4	3,5,5,5,5,4	7.028	32,242,0	2,1,1,2,3,3,7	12.252	19,192,2	19	11.804	0.24	19,196,0	74.33	3.794		
O_4	3,5,5,5,5,4	3,5,5,5,5,4	55.263	33,194,2	2,1,1,2,2,3,8	72.525	19,146,3	19	72.023	0.18	19,147,0	31.24	0.696		
O_5	3,5,5,5,5,4	3,5,5,5,5,4	115.557	33,185,2	2,1,1,1,2,4,8	147.888	19,138,4	19	147.298	0.21	19,139,0	27.98	0.401		
O_6	3,5,5,5,5,4	3,5,5,5,5,4	-13.990	32,432,0	2,1,2,2,3,3,6	-6.121	19,369,3	19	-6.674	0.18	19,372,0	56.24	8.277		
O_7	3,5,5,5,5,4	3,5,5,5,5,4	16.985	32,154,0	0,1,2,2,3,4,7	20.843	19,93,1	19	20.435	0.18	19,98,0	22.72	1.995		
O_8	3,5,5,5,5,4	3,5,5,5,5,4	-6.995	32,432,0	2,1,2,2,3,3,6	-3.276	19,371,3	19	-3.803	0.21	19,376,0	53.16	13.855		
O_9	2,7,7,6,6,7,7	2,7,7,6,6,7,7	10.855	43,94,1	1,1,2,2,3,4,6	10.432	19,79,0	19	9.976	0.18	19,92,0	-3.89	4.573		
O_{10}	3,5,5,5,5,4	3,5,5,5,5,4	5.798	33,224,1	1,1,2,2,3,4,6	7.582	19,169,1	19	7.126	0.21	19,177,0	30.77	6.401		
O_{11}	1,1,1,1,1,1,1	1,1,1,1,1,1,1	6.760	7,0,0	0,0,1,1,1,2,3	7.476	8,0,0	8	7.272	0.03	8,0,0	10.60	2.805		

Table 26 (continued)

Scen.	IB		EB		CW				%ΔP*					
	$C_1^* - C_7^*$		$C_1^* - C_7^*$		C*	P*	cpu	iter	E-I	E-C				
	cpu	iter	cpu	iter										
T_3														
O_1	3,5,5,5,5,5,4	0.998	6.73	32,293,0	1,2,2,2,3,4,5	4.308	4.03	19,234,2	19	3.343	0.19	19,244,0	331.48	28.849
O_2	3,5,5,5,5,5,4	-5.031	7.00	32,508,0	1,2,2,2,3,4,5	-3.178	2.96	19,427,1	19	-4.184	0.24	19,445,0	36.83	24.045
O_3	3,5,5,5,5,5,4	7.028	6.62	32,242,0	2,1,2,2,3,3,6	11.813	4.41	19,194,2	19	10.871	0.18	19,201,0	68.09	8.672
O_4	3,5,5,5,5,5,4	55.263	10.33	33,194,2	2,1,1,2,2,4,7	72.040	4.62	19,146,3	19	71.090	0.19	19,148,0	30.36	1.336
O_5	3,5,5,5,5,5,4	115.557	10.24	33,185,2	2,1,1,2,2,3,8	147.392	4.11	19,138,2	19	146.365	0.18	19,140,0	27.55	0.702
O_6	3,5,5,5,5,5,4	-13.990	6.98	32,432,0	2,1,2,2,3,3,6	-6.553	5.07	19,371,3	19	-7.607	0.18	19,376,0	53.16	13.855
O_7	3,5,5,5,5,5,4	16.985	6.77	32,154,0	1,1,2,2,3,4,6	20.378	3.17	19,95,1	19	19.502	0.18	19,105,0	19.98	4.490
O_8	3,5,5,5,5,5,4	-6.995	6.64	32,432,0	1,2,2,2,3,4,5	-3.706	3.89	19,373,2	19	-4.736	0.18	19,383,0	47.01	21.746
O_9	2,7,7,6,6,7,7	10.855	11.96	43,94,1	1,2,2,2,3,4,5	10.008	2.86	19,84,1	19	9.043	0.24	19,107,0	-7.81	10.665
O_{10}	3,5,5,5,5,5,4	5.798	8.76	33,224,1	1,2,2,2,3,4,5	7.158	2.90	19,171,1	19	6.193	0.18	19,187,0	23.44	15.573
O_{11}	1,1,1,1,1,1,1	6.760	1.31	7,0,0	0,0,1,1,1,2,3	7.158	0.31	8,0,0	7	6.756	0.03	7,0,0	5.89	5.946

Table 27 Numerical results for scenario L_6 of the 8-machine line

Scen.	IB		EB				CW				%ΔP*				
	$C_1^* - C_7^*$		$C_1^* - C_7^*$				C^*				E-I		E-C		
	P*	cpu	iter	P*	cpu	iter	P*	cpu	iter	P*	cpu	iter		E-I	
T_1															
O_1	2,2,2,2,2,2,2	5.517	3.45	15,104,1	0,0,0,0,0,3,6	7.106	0.26	9,19,0	9	7.106	0.03	9,19,0	28.79	0.001	
O_2	2,2,2,2,2,2,2	-1.249	3.40	14,309,1	0,0,0,0,0,0,9	-0.231	0.22	9,219,0	9	-0.231	0.03	9,219,0	81.48	0.000	
O_3	2,2,2,2,2,2,2	12.283	3.34	15,35,1	0,0,0,0,0,3,6	14.442	0.32	9,0,0	9	14.442	0.03	9,0,0	17.58	0.001	
O_4	2,3,2,2,2,2,2	66.546	2.50	15,0,0	0,0,0,1,0,4,6	74.055	0.40	11,0,0	11	74.054	0.04	11,0,0	11.28	0.001	
O_5	2,3,2,2,2,2,2	134.551	2.52	15,0,0	0,0,0,1,0,4,6	148.770	0.46	11,0,0	11	148.768	0.04	11,0,0	10.57	0.001	
O_6	2,2,2,2,2,2,2	-1.157	3.41	15,243,1	0,0,0,0,1,3,5	1.917	0.44	9,158,1	9	1.917	0.03	9,158,0	265.62	0.007	
O_7	2,3,3,2,2,2,2	17.774	2.85	16,0,0	0,0,0,0,0,4,8	19.953	0.63	12,0,1	12	19.953	0.05	12,0,0	12.26	0.000	
O_8	2,2,2,2,2,2,2	-0.579	3.41	15,243,1	0,0,0,0,1,3,5	0.958	0.36	9,158,1	9	0.958	0.03	9,158,0	265.62	0.007	
O_9	3,11,5,5,5,5,5	10.460	7.62	39,0,0	0,0,0,0,3,4,7	10.230	0.73	14,0,0	14	10.230	0.07	14,0,0	-2.20	0.001	
O_{10}	2,3,2,2,2,2,2	7.591	2.52	15,0,0	0,0,0,0,0,3,7	8.488	0.30	10,0,0	10	8.488	0.03	10,0,0	11.81	0.000	
O_{11}	0,0,0,0,0,0,0	5.370	0.09	0,0,0	0,0,0,0,0,3,5	7.154	0.20	8,0,0	8	7.154	0.02	8,0,0	33.22	0.000	
T_2															
O_1	2,2,2,2,2,2,2	5.517	3.39	15,104,1	0,1,1,1,1,2,3	6.763	0.31	9,25,0	9	6.528	0.03	9,37,0	22.58	3.595	
O_2	2,2,2,2,2,2,2	-1.249	3.45	14,309,1	0,1,1,1,2,2,2	-0.533	0.56	9,225,1	9	-0.809	0.03	9,250,0	57.33	34.097	
O_3	2,2,2,2,2,2,2	12.283	3.36	15,35,1	0,0,1,1,1,2,4	14.077	0.30	9,0,0	9	13.865	0.03	9,0,0	14.60	1.525	
O_4	2,3,2,2,2,2,2	66.546	2.43	15,0,0	0,0,1,1,2,2,5	73.638	0.44	11,0,0	11	73.396	0.04	11,0,0	10.66	0.330	
O_5	2,3,2,2,2,2,2	134.551	2.49	15,0,0	0,0,1,1,2,2,5	148.339	0.44	11,0,0	11	148.110	0.04	11,0,0	10.25	0.155	
O_6	2,2,2,2,2,2,2	-1.157	3.49	15,243,1	0,1,1,1,1,2,3	1.582	0.45	9,162,1	9	1.339	0.02	9,167,0	236.72	18.129	
O_7	2,3,3,2,2,2,2	17.774	2.92	16,0,0	0,1,1,1,2,3,4	19.559	0.52	12,0,0	12	19.262	0.05	12,0,0	10.04	1.542	
O_8	2,2,2,2,2,2,2	-0.579	3.44	15,243,1	0,1,1,1,1,2,3	0.638	0.36	9,164,0	9	0.381	0.03	9,176,0	210.31	67.488	
O_9	3,11,5,5,5,5,5	10.460	7.62	39,0,0	0,1,2,2,2,3,4	9.851	0.73	14,0,0	13	9.505	0.06	13,0,0	-5.83	3.633	
O_{10}	2,3,2,2,2,2,2	7.591	2.64	15,0,0	0,1,1,1,2,2,3	8.133	0.38	10,0,0	9	7.878	0.03	9,0,0	7.14	3.237	
O_{11}	0,0,0,0,0,0,0	5.370	0.09	0,0,0	0,0,1,1,1,2,3	6.823	0.26	8,0,0	7	6.643	0.02	7,0,0	27.07	2.719	

Table 27 (continued)

Scen.	IB		EB				CW				%ΔP*			
	$C_1^* - C_7^*$		$C_1^* - C_7^*$				C^*				E-I	E-C		
	P*	cpu	iter	cpu	iter	P*	cpu	iter	P*	cpu	iter			
T_3														
O_1	2,2,2,2,2,2,2,2	5.517	3.43	15,104,1	0,1,1,1,1,2,3	6.457	0.31	9,28,0	9	5.951	0.03	9,53,0	17.04	8.507
O_2	2,2,2,2,2,2,2,2	-1.249	3.50	14,309,1	1,1,1,1,1,2,2	-0.799	0.52	9,241,1	9	-1.386	0.03	9,277,0	36.00	42.335
O_3	2,2,2,2,2,2,2,2	12.283	3.38	15,35,1	0,1,1,1,1,2,3	13.767	0.33	9,0,0	9	13.288	0.03	9,1,0	12.08	3.605
O_4	2,3,2,2,2,2,2,2	66.546	2.49	15,0,0	0,1,1,1,1,2,5	73.245	0.66	11,0,1	11	72.738	0.04	11,0,0	10.07	0.698
O_5	2,3,2,2,2,2,2,2	134.551	2.51	15,0,0	0,0,1,1,2,2,5	147.936	0.44	11,0,0	11	147.452	0.04	11,0,0	9.95	0.329
O_6	2,2,2,2,2,2,2,2	-1.157	3.43	15,243,1	0,1,1,1,1,2,3	1.277	0.37	9,164,0	9	0.762	0.03	9,176,0	210.31	67.488
O_7	2,3,3,2,2,2,2,2	17.774	2.84	16,0,0	0,1,1,2,2,2,4	19.202	0.51	12,0,0	12	18.571	0.05	12,0,0	8.03	3.398
O_8	2,2,2,2,2,2,2,2	-0.579	3.38	15,243,1	1,1,1,1,1,2,2	0.357	0.49	9,167,1	9	-0.196	0.03	9,192,0	161.66	281.913
O_9	3,11,5,5,5,5,5	10.460	7.61	39,0,0	0,2,2,2,2,3,3	9.504	0.74	14,0,0	12	8.806	0.05	12,0,0	-9.14	7.931
O_{10}	2,3,2,2,2,2,2,2	7.591	2.59	15,0,0	0,1,1,1,2,2,3	7.815	0.39	10,0,0	9	7.301	0.03	9,0,0	2.95	7.046
O_{11}	0,0,0,0,0,0,0,0	5.370	0.09	0,0,0	0,1,1,1,1,2,2	6.536	0.29	8,0,0	7	6.170	0.02	7,0,0	21.72	5.932

Table 28 Numerical results for scenario L_7 of the 8-machine line

Scen.	IB		EB				CW				%ΔP*			
	$C_1^* - C_7^*$	P^*	cpu	iter	$C_1^* - C_7^*$	P^*	cpu	iter	C^*	P^*	cpu	iter	E-I	E-C
T_1														
O_1	1,2,2,3,2,2,2	5.100	3.32	15,111,1	0,0,0,0,0,4,5	6.924	0.38	9,32,1	9	6.924	0.03	9,32,0	35.77	0.001
O_2	1,2,2,3,2,2,2	-1.365	3.16	15,318,1	0,0,0,0,0,0,9	-0.231	0.31	9,219,0	9	-0.231	0.03	9,219,0	83.06	0.000
O_3	1,2,2,3,3,2,2	11.553	2.32	15,72,0	0,0,0,0,0,4,5	14.079	0.33	9,0,0	9	14.079	0.03	9,0,0	21.86	0.001
O_4	1,2,2,3,3,2,2	63.815	2.30	15,1,0	0,0,0,0,1,3,6	71.617	0.43	10,0,1	10	71.616	0.03	10,0,0	12.23	0.001
O_5	1,2,2,3,3,2,2	129.143	2.33	15,0,0	0,0,0,0,1,3,6	143.674	0.43	10,0,1	10	143.672	0.03	10,0,0	11.25	0.001
O_6	1,2,2,3,2,2,2	-1.995	3.13	15,250,1	0,0,0,0,1,3,5	1.554	0.39	9,171,1	9	1.553	0.03	9,171,0	177.88	0.016
O_7	1,2,2,3,3,2,2	17.464	2.30	15,0,0	0,0,0,0,0,5,7	19.638	0.66	12,0,1	12	19.638	0.05	12,0,0	12.45	0.001
O_8	1,2,2,3,2,2,2	-0.998	3.04	15,250,1	0,0,0,0,1,3,5	0.777	0.36	9,171,1	9	0.777	0.03	9,171,0	177.88	0.016
O_9	1,3,3,4,10,5,5	9.893	5.23	31,0,0	0,0,0,0,2,4,6	9.873	0.84	12,0,1	12	9.873	0.05	12,0,0	-0.19	0.002
O_{10}	1,2,2,3,3,2,2	7.271	2.23	15,15,0	0,0,0,0,0,4,5	8.274	0.27	9,0,0	9	8.274	0.02	9,0,0	13.80	0.001
O_{11}	0,0,0,1,1,0,0	5.394	0.34	2,0,0	0,0,0,0,0,3,5	7.006	0.20	8,0,0	8	7.006	0.02	8,0,0	29.88	0.001
T_2														
O_1	1,2,2,3,2,2,2	5.100	3.20	15,111,1	0,0,1,1,2,2,3	6.561	0.32	9,40,0	9	6.347	0.03	9,48,0	28.65	3.377
O_2	1,2,2,3,2,2,2	-1.365	3.14	15,318,1	0,1,1,1,2,2,2	-0.547	0.51	9,234,1	9	-0.809	0.03	9,250,0	59.93	32.342
O_3	1,2,2,3,3,2,2	11.553	2.35	15,72,0	0,0,1,1,2,2,3	13.698	0.41	9,0,0	9	13.502	0.03	9,5,0	18.57	1.457
O_4	1,2,2,3,3,2,2	63.815	2.32	15,1,0	0,0,0,1,2,2,5	71.183	0.35	10,0,0	10	70.996	0.03	10,0,0	11.54	0.263
O_5	1,2,2,3,3,2,2	129.143	2.30	15,0,0	0,0,0,1,2,2,5	143.236	0.45	10,0,0	10	143.052	0.04	10,0,0	10.91	0.129
O_6	1,2,2,3,2,2,2	-1.995	3.06	15,250,1	0,0,1,1,2,2,3	1.194	0.48	9,173,1	9	0.976	0.03	9,179,0	159.87	22.353
O_7	1,2,2,3,3,2,2	17.464	2.29	15,0,0	0,0,1,2,2,3,4	19.199	0.55	12,0,0	11	18.951	0.04	11,0,0	9.94	1.312
O_8	1,2,2,3,2,2,2	-0.998	3.08	15,250,1	0,1,1,1,1,2,3	0.440	0.60	9,178,1	9	0.199	0.03	9,187,0	144.07	120.416
O_9	1,3,3,4,10,5,5	9.893	5.16	31,0,0	0,1,1,1,2,3,4	9.468	0.64	12,0,0	11	9.188	0.04	11,0,0	-4.29	3.046
O_{10}	1,2,2,3,3,2,2	7.271	2.27	15,15,0	0,0,1,1,2,2,3	7.911	0.32	9,0,0	9	7.697	0.03	9,0,0	8.81	2.785
O_{11}	0,0,0,1,1,0,0	5.394	0.34	2,0,0	0,0,0,1,1,2,3	6.677	0.20	7,0,0	7	6.525	0.02	7,0,0	23.77	2.316

Table 28 (continued)

Scen.	IB		EB				CW				%ΔP*			
	C ₁ [*] -C ₇ [*]	P*	cpu	iter	C ₁ [*] -C ₇ [*]	P*	cpu	iter	C*	P*	cpu	iter	E-I	E-C
T ₃														
O ₁	1,2,2,3,2,2,2	5.100	3.39	15,111,1	0,1,1,1,1,2,3	6.230	0.50	9,47,1	9	5.769	0.03	9,63,0	22.16	7.987
O ₂	1,2,2,3,2,2,2	-1.365	3.12	15,318,1	0,1,1,2,1,2,2	-0.819	0.54	9,239,1	9	-1.386	0.03	9,277,0	40.04	40.933
O ₃	1,2,2,3,3,2,2	11.553	2.32	15,72,0	0,0,1,1,2,2,3	13.359	0.38	9,4,0	9	12.924	0.03	9,16,0	15.63	3.362
O ₄	1,2,2,3,3,2,2	63.815	2.31	15,1,0	0,0,1,1,2,2,4	70.788	0.37	10,0,0	10	70.376	0.03	10,0,0	10.93	0.586
O ₅	1,2,2,3,3,2,2	129.143	2.35	15,0,0	0,0,0,1,2,2,5	142.805	0.43	10,0,0	10	142.431	0.03	10,0,0	10.58	0.262
O ₆	1,2,2,3,2,2,2	-1.995	3.10	15,250,1	0,1,1,1,1,2,3	0.879	0.55	9,178,1	9	0.399	0.03	9,187,0	144.07	120.416
O ₇	1,2,2,3,3,2,2	17.464	2.37	15,0,0	0,1,1,1,2,3,4	18.814	0.84	12,0,1	11	18.293	0.04	11,0,0	7.73	2.848
O ₈	1,2,2,3,2,2,2	-0.998	3.09	15,250,1	0,1,1,1,2,2,2	0.152	0.51	9,186,1	9	-0.378	0.03	9,202,0	115.22	140.188
O ₉	1,3,3,4,10,5,5	9.893	5.21	31,0,0	1,1,1,1,2,3,3	9.113	1.08	12,0,1	11	8.530	0.04	11,0,0	-7.88	6.836
O ₁₀	1,2,2,3,3,2,2	7.271	2.20	15,15,0	0,1,1,1,1,2,3	7.580	0.61	9,0,1	9	7.119	0.03	9,13,0	4.26	6.472
O ₁₁	0,0,0,1,1,0,0	5.394	0.36	2,0,0	0,0,1,1,1,2,2	6.405	0.28	7,0,0	6	6.059	0.01	6,0,0	18.73	5.700

Table 29 Numerical results for scenario L_8 of the 8-machine line

Scen.	IB		EB				CW				%ΔP*			
	$C_1^* - C_7^*$		$C_1^* - C_7^*$				C^*				E-I			
	P*	cpu	iter	P*	cpu	iter	P*	cpu	iter	P*	cpu	iter	E-I	E-C
T_1														
O_1	1,2,2,2,2,3	4.944	3.35	15,120,1	0,0,0,0,1,0,8	6.803	0.32	9,40,1	9	6.803	0.04	9,40,0	37.60	0.000
O_2	1,1,2,2,3,3,2	-1.335	3.53	14,319,1	0,0,0,0,0,0,9	-0.231	0.22	9,219,0	9	-0.231	0.03	9,219,0	82.68	0.000
O_3	1,2,2,2,2,3,3	11.242	2.51	15,86,0	0,0,0,0,1,0,8	13.837	0.26	9,5,0	9	13.837	0.03	9,5,0	23.08	0.000
O_4	1,2,2,2,2,3,3	62.361	2.49	15,9,0	0,0,0,1,1,0,8	70.148	0.33	10,0,0	10	70.145	0.04	10,0,0	12.49	0.003
O_5	1,2,2,2,2,3,3	126.259	2.49	15,0,0	0,0,0,1,1,0,8	140.735	0.37	10,0,0	10	140.730	0.03	10,0,0	11.46	0.003
O_6	2,1,2,2,2,2,3	-2.346	4.25	15,259,2	0,0,0,1,1,0,7	1.312	0.53	9,179,2	9	1.311	0.03	9,179,0	155.94	0.058
O_7	1,2,2,2,2,3,3	17.357	2.62	15,0,0	0,0,0,0,1,1,9	19.433	0.63	11,0,0	11	19.432	0.04	11,0,0	11.96	0.000
O_8	2,1,2,2,2,2,3	-1.173	4.17	15,259,2	0,0,0,1,1,0,7	0.656	0.51	9,179,2	9	0.656	0.03	9,179,0	155.94	0.058
O_9	1,2,3,3,4,4,1,1	9.515	5.69	28,0,0	0,0,0,1,1,0,9	9.670	0.60	11,0,0	11	9.670	0.05	11,0,0	1.63	0.003
O_{10}	1,2,2,2,2,3,3	7.103	2.58	15,33,0	0,0,0,0,1,0,8	8.153	0.27	9,0,0	9	8.153	0.03	9,0,0	14.79	0.000
O_{11}	0,1,1,1,1,1,1	5.835	1.22	6,0,0	0,0,0,0,0,0,7	6.920	0.14	7,0,0	7	6.920	0.02	7,0,0	18.61	0.000
T_2														
O_1	1,2,2,2,2,2,3	4.944	3.34	15,120,1	0,0,1,1,1,2,4	6.432	0.38	9,44,0	9	6.226	0.03	9,56,0	30.09	3.307
O_2	1,1,2,2,3,3,2	-1.335	3.58	14,319,1	0,1,1,1,1,3,2	-0.554	0.61	9,238,1	9	-0.809	0.03	9,250,0	58.54	31.539
O_3	1,2,2,2,2,3,3	11.242	2.57	15,86,0	0,0,1,1,1,2,4	13.451	0.35	9,9,0	9	13.260	0.03	9,15,0	19.65	1.444
O_4	1,2,2,2,2,3,3	62.361	2.48	15,9,0	0,0,1,1,1,2,5	69.696	0.46	10,0,0	9	69.533	0.03	9,0,0	11.76	0.234
O_5	1,2,2,2,2,3,3	126.259	2.46	15,0,0	0,0,0,1,1,2,6	140.277	0.40	10,0,0	10	140.109	0.03	10,0,0	11.10	0.120
O_6	2,1,2,2,2,2,3	-2.346	4.24	15,259,2	0,0,1,1,1,2,4	0.947	0.34	9,184,0	9	0.734	0.03	9,187,0	140.38	29.030
O_7	1,2,2,2,2,3,3	17.357	2.99	15,0,0	0,0,1,1,1,3,5	18.995	0.60	11,0,0	11	18.774	0.04	11,0,0	9.43	1.174
O_8	2,1,2,2,2,2,3	-1.173	4.15	15,259,2	0,1,1,1,1,2,3	0.324	0.56	9,183,1	9	0.078	0.03	9,194,0	127.59	312.361
O_9	1,2,3,3,4,4,1,1	9.515	5.71	28,0,0	0,1,1,1,1,3,4	9.264	0.52	11,0,0	11	9.011	0.04	11,0,0	-2.64	2.802
O_{10}	1,2,2,2,2,3,3	7.103	2.54	15,33,0	0,0,1,1,1,2,4	7.782	0.35	9,0,0	9	7.576	0.04	9,2,0	9.56	2.718
O_{11}	0,1,1,1,1,1,1	5.835	1.27	6,0,0	0,0,0,1,1,2,3	6.599	0.24	7,0,0	7	6.447	0.02	7,0,0	13.09	2.346

Table 29 (continued)

Scen.	IB	EB				CW				%ΔP*				
		$C_1^* - C_7^*$	P^*	cpu	iter	$C_1^* - C_7^*$	P^*	cpu	iter	E-I	E-C			
T_3														
O_1	1,2,2,2,2,2,3	4.944	3.44	15,120,1	0,1,1,1,1,2,3	6.107	0.55	9,59,1	9	5.648	0.03	9,70,0	23.53	8.124
O_2	1,1,2,2,3,3,2	-1.335	3.55	14,319,1	0,1,1,1,1,3,2	-0.816	0.77	9,245,1	9	-1.386	0.03	9,277,0	38.85	41.090
O_3	1,2,2,2,2,3,3	11.242	2.51	15,86,0	0,0,1,1,1,2,4	13.100	0.41	9,14,0	9	12.683	0.03	9,25,0	16.53	3.293
O_4	1,2,2,2,2,3,3	62.361	2.48	15,9,0	0,0,1,1,1,2,5	69.299	0.41	10,0,0	9	68.956	0.03	9,0,0	11.13	0.498
O_5	1,2,2,2,2,3,3	126.259	2.52	15,0,0	0,0,1,1,1,2,5	139.833	0.41	10,0T,0	10	139.489	0.03	10,0,0	10.75	0.247
O_6	2,1,2,2,2,2,3	-2.346	4.19	15,259,2	0,1,1,1,1,2,3	0.647	0.64	9,183,1	9	0.157	0.03	9,194,0	127.59	312.361
O_7	1,2,2,2,2,3,3	17.357	2.53	15,0,0	0,1,1,1,1,3,4	18.597	0.59	11,0,0	11	18.116	0.04	11,0,0	7.14	2.653
O_8	2,1,2,2,2,2,3	-1.173	4.17	15,259,2	1,0,1,1,1,2,3	0.031	0.54	9,198,1	9	-0.499	0.03	9,209,0	102.63	106.191
O_9	1,2,3,3,4,4,11	9.515	5.67	28,0,0	0,1,1,1,1,3,4	8.908	0.56	11,0,0	10	8.379	0.03	10,0,0	-6.37	6.321
O_{10}	1,2,2,2,2,3,3	7.103	2.46	15,33,0	0,1,1,1,1,2,3	7.457	0.51	9,0,0	9	6.998	0.03	9,21,0	4.99	6.557
O_{11}	0,1,1,1,1,1,1	5.835	1.21	6,0,0	0,0,1,1,1,2,2	6.299	0.27	7,0,0	6	5.998	0.01	6,0,0	7.95	5.008

Table 30 Numerical results for scenario L_9 of the 8-machine line

Scen.	IB		EB				CW				%ΔP*		
	$C_1^* - C_7^*$		$C_1^* - C_7^*$		P^*		C^*		P^*		E-I	E-C	
	cpu	iter	cpu	iter	cpu	iter	cpu	iter	cpu	iter			
T_1													
O_1	2,2,2,2,3,2,2	25.178	45.54	15,0,0	0,0,0,1,1,4,6	27.081	12,0,1	12	27.081	0.05	12,0,0	7.56	0.000
O_2	1,2,3,2,2,2,2	2.649	47.70	14,178,1	0,0,0,0,1,1,8	3.572	10,80,0	10	3.572	0.03	10,80,0	34.83	0.000
O_3	2,2,3,3,3,3,2	47.870	44.70	18,0,0	0,0,0,2,1,4,6	51.003	13,0,0	13	51.002	0.06	13,0,0	6.54	0.001
O_4	2,3,3,3,3,3,3	232.634	43.83	20,0,0	0,0,0,3,2,3,7	243.352	15,0,1	15	243.348	0.10	15,0,0	4.61	0.002
O_5	2,3,3,3,3,3,3	463.644	44.65	20,0,0	0,0,0,3,2,3,7	484.013	15,0,1	15	484.005	0.10	15,0,0	4.39	0.002
O_6	1,2,3,2,2,2,2	17.938	44.10	14,110,1	0,0,0,1,2,2,5	20.898	10,31,3	10	20.898	0.03	10,31,0	16.50	0.001
O_7	2,3,3,4,3,3,3	59.143	43.70	21,0,0	0,0,0,1,2,5,9	62.320	17,0,0	17	62.319	0.13	17,0,0	5.37	0.000
O_8	1,2,3,2,2,2,2	8.969	45.22	14,110,1	0,0,0,1,2,2,5	10.449	10,31,3	10	10.449	0.03	10,31,0	16.50	0.001
O_9	2,5,5,5,5,5,5	31.212	44.37	32,0,0	0,1,1,1,1,5,8	31.348	17,0,2	17	31.347	0.16	17,0,0	0.43	0.002
O_{10}	2,3,3,3,3,3,3	27.726	44.48	20,0,0	0,0,1,0,1,5,7	29.037	14,0,1	14	29.037	0.07	14,0,0	4.73	0.001
O_{11}	2,2,2,2,3,2,2	25.178	43.90	15,0,0	0,0,0,1,1,4,6	27.081	12,0,1	12	27.081	0.05	12,0,0	7.56	0.000
T_2													
O_1	2,2,2,2,3,2,2	25.178	44.42	15,0,0	0,1,1,2,2,2,4	26.746	12,0,0	12	26.387	0.05	12,0,0	6.23	1.360
O_2	1,2,3,2,2,2,2	2.649	43.99	14,178,1	1,1,1,1,2,2,2	3.292	10,88,1	10	2.937	0.03	10,106,0	24.27	12.082
O_3	2,2,3,3,3,3,2	47.870	44.31	18,0,0	0,1,1,2,2,2,5	50.646	13,0,1	13	50.286	0.07	13,0,0	5.80	0.716
O_4	2,3,3,3,3,3,3	232.634	43.74	20,0,0	0,1,1,2,2,3,6	242.961	15,0,0	15	242.596	0.09	15,0,0	4.44	0.151
O_5	2,3,3,3,3,3,3	463.644	43.60	20,0,0	0,1,1,2,2,3,6	483.606	15,0,0	15	483.253	0.09	15,0,0	4.31	0.073
O_6	1,2,3,2,2,2,2	17.938	44.23	14,110,1	0,1,1,1,2,2,3	20.594	10,34,0	10	20.263	0.04	10,38,0	14.81	1.633
O_7	2,3,3,4,3,3,3	59.143	43.81	21,0,0	0,1,2,2,3,3,6	61.926	17,0,0	16	61.543	0.10	16,0,0	4.71	0.623
O_8	1,2,3,2,2,2,2	8.969	44.45	14,110,1	0,1,1,1,2,2,3	10.161	10,36,0	10	9.814	0.03	10,45,0	13.30	3.537
O_9	2,5,5,5,5,5,5	31.212	43.77	32,0,0	1,1,2,2,2,3,6	30.989	17,0,0	17	30.568	0.14	17,0,0	-72	1.376
O_{10}	2,3,3,3,3,3,3	27.726	43.67	20,0,0	1,1,1,2,2,3,4	28.685	14,0,0	14	28.302	0.09	14,0,0	3.46	1.355
O_{11}	2,2,2,2,3,2,2	25.178	43.91	15,0,0	0,1,1,2,2,2,4	26.746	12,0,0	12	26.387	0.05	12,0,0	6.23	1.360

Table 30 (continued)

Scen.	IB	EB				CW				%ΔP*				
		$C_1^* - C_7^*$	P^*	cpu	iter	$C_1^* - C_7^*$	P^*	cpu	iter	E-I	E-C			
T_3														
O_1	2,2,2,2,3,2,2	25.178	44.08	15,0,0	1,1,1,1,2,2,4	26.442	0.85	12,0,1	12	25.694	0.05	12,0,0	5.02	2.911
O_2	1,2,3,2,2,2,2	2.649	44.54	14,178,1	1,1,1,1,2,2,2	3.087	0.36	10,87,0	10	2.303	0.04	10,128,0	16.53	34.078
O_3	2,2,3,3,3,3,2	47.870	44.05	18,0,0	0,1,1,2,2,3,4	50.319	0.64	13,0,0	13	49.569	0.06	13,0,0	5.12	1.513
O_4	2,3,3,3,3,3,3	232.634	43.88	20,0,0	0,1,1,2,2,3,6	242.588	1.11	15,0,0	15	241.844	0.09	15,0,0	4.28	0.308
O_5	2,3,3,3,3,3,3	463.644	44.02	20,0,0	0,1,1,2,2,3,6	483.232	1.06	15,0,0	15	482.501	0.10	15,0,0	4.23	0.152
O_6	1,2,3,2,2,2,2	17.938	43.97	14,110,1	0,1,1,1,2,2,3	20.323	0.36	10,36,0	10	19.628	0.03	10,45,0	13.30	3.537
O_7	2,3,3,4,3,3,3	59.143	44.31	21,0,0	1,1,1,2,3,3,5	61.576	1.27	16,0,0	16	60.777	0.11	16,0,0	4.11	1.314
O_8	1,2,3,2,2,2,2	8.969	44.13	14,110,1	1,1,1,1,1,2,3	9.905	0.52	10,40,1	10	9.179	0.03	10,57,0	10.43	7.899
O_9	2,5,5,5,5,5,5	31.212	43.55	32,0,0	1,1,2,2,3,3,5	30.668	1.38	17,0,0	16	29.791	0.12	16,0,0	-0.74	2.947
O_{10}	2,3,3,3,3,3,3	27.726	44.00	20,0,0	1,1,1,2,2,3,4	28.390	0.78	14,0,0	13	27.568	0.06	13,0,0	2.40	2.980
O_{11}	2,2,2,2,3,2,2	25.178	44.11	15,0,0	1,1,1,1,2,2,4	26.442	1.01	12,0,1	12	25.694	0.05	12,0,0	5.02	2.911

Table 31 Numerical results for scenario L_{10} of the 8-machine line

Scen.	IB			EB			CW			%ΔP*				
	$C_1^+ - C_7^-$	P*	cpu iter	$C_1^- - C_7^+$	P*	cpu iter	C*	P*	cpu iter	E-I	E-C			
T_1														
O_1	2,3,2,2,2,2,2	24,211	44,81	15,0,0	0,0,0,1,0,6,5	25,873	0,97	12,0,2	12	25,872	0,04	12,0,0	6,86	0,000
O_2	1,2,1,2,2,1,1	2,908	44,37	13,187,4	0,0,0,0,0,1,6	3,495	0,15	7,0,0	7	3,495	0,02	7,0,0	20,20	0,000
O_3	2,3,3,2,2,2,2	46,066	44,09	16,0,0	0,1,0,1,1,4,6	48,817	0,94	13,0,1	13	48,817	0,05	13,0,0	5,97	0,001
O_4	3,4,3,3,3,3,2	223,252	44,24	21,0,0	0,1,0,1,1,3,6	233,392	1,08	14,0,1	14	233,388	0,06	14,0,0	4,54	0,002
O_5	3,4,3,3,3,3,2	445,319	43,88	21,0,0	0,1,0,1,1,3,6	464,328	0,86	15,0,0	15	464,318	0,08	15,0,0	4,27	0,002
O_6	1,2,1,2,1,2,1	18,031	44,41	14,61,6	0,0,0,1,1,3,4	20,084	0,44	9,0,1	9	20,084	0,02	9,0,0	11,39	0,001
O_7	3,5,3,3,3,3,2	56,594	43,77	22,0,0	0,1,0,1,1,5,7	59,262	1,73	15,0,2	15	59,261	0,10	15,0,0	4,71	0,000
O_8	1,2,1,2,1,2,1	9,016	45,04	14,61,6	0,0,0,1,1,3,4	10,042	0,37	9,0,1	9	10,042	0,03	9,0,0	11,39	0,001
O_9	4,15,5,4,4,4,4	30,187	43,91	40,0,0	0,1,0,1,1,4,6	29,965	2,02	16,0,2	16	29,965	0,11	16,0,0	-0,73	0,001
O_{10}	3,4,3,3,3,3,2	26,541	46,30	21,0,0	0,1,0,1,1,4,6	27,751	1,24	13,0,2	13	27,751	0,08	13,0,0	4,56	0,001
O_{11}	2,3,2,2,2,2,2	24,211	44,34	15,0,0	0,0,0,1,0,6,5	25,873	0,97	12,0,2	12	25,872	0,05	12,0,0	6,86	0,000
T_2														
O_1	2,3,2,2,2,2,2	24,211	44,27	15,0,0	0,1,1,2,2,2,4	25,528	0,47	12,0,0	12	25,158	0,05	12,0,0	5,44	1,471
O_2	1,2,1,2,2,1,1	2,908	44,45	13,187,4	0,1,1,1,1,2,2	3,225	0,34	8,12,0	7	2,982	0,02	7,0,0	10,89	8,127
O_3	2,3,3,2,2,2,2	46,066	44,75	16,0,0	0,1,1,2,2,3,4	48,460	0,68	13,0,0	13	48,081	0,06	13,0,0	5,20	0,788
O_4	3,4,3,3,3,3,2	223,252	44,05	21,0,0	0,1,1,2,2,3,5	233,017	0,70	14,0,0	14	232,636	0,07	14,0,0	4,37	0,164
O_5	3,4,3,3,3,3,2	445,319	44,29	21,0,0	0,1,1,2,2,3,6	463,947	0,94	15,0,0	15	463,552	0,08	15,0,0	4,18	0,085
O_6	1,2,1,2,1,2,1	18,031	44,55	14,61,6	0,1,1,1,1,2,3	19,774	0,27	9,0,0	8	19,473	0,02	8,0,0	9,66	1,544
O_7	3,5,3,3,3,3,2	56,594	43,99	22,0,0	0,1,2,2,2,3,5	58,901	0,84	15,0,0	15	58,495	0,08	15,0,0	4,08	0,695
O_8	1,2,1,2,1,2,1	9,016	45,09	14,61,6	0,1,1,1,1,2,3	9,740	0,32	9,0,0	8	9,451	0,02	8,0,0	8,04	3,062
O_9	4,15,5,4,4,4,4	30,187	43,83	40,0,0	0,2,2,2,3,3,4	29,626	1,00	16,0,0	16	29,187	0,10	16,0,0	-1,86	1,504
O_{10}	3,4,3,3,3,3,2	26,541	44,02	21,0,0	0,1,2,2,2,2,4	27,403	0,55	13,0,0	13	27,015	0,06	13,0,0	3,25	1,435
O_{11}	2,3,2,2,2,2,2	24,211	44,24	15,0,0	0,1,1,2,2,2,4	25,528	0,53	12,0,0	12	25,158	0,04	12,0,0	5,44	1,471

Table 31 (continued)

Scen.	IB	EB				CW				%ΔP*				
		$C_1^* - C_7^*$	P^*	cpu	iter	$C_1^* - C_7^*$	P^*	cpu	iter	E-I	E-C			
T_3														
O_1	2,3,2,2,2,2,2	24,211	44.11	15,0,0	0,1,2,2,2,2,3	25,204	0.46	12,0,0	11	24,461	0.04	11,0,0	4.10	3,039
O_2	1,2,1,2,2,1,1	2,908	44.50	13,187,4	1,1,1,1,1,1,2	2,995	0.24	8,24,0	7	2,469	0.02	7,33,0	3.01	21,306
O_3	2,3,3,2,2,2,2	46,066	43.97	16,0,0	0,1,2,2,2,2,4	48,126	0.55	13,0,0	13	47,346	0.05	13,0,0	4.47	1,649
O_4	3,4,3,3,3,3,2	223,252	44.39	21,0,0	0,1,1,2,2,3,5	232,653	0.76	14,0,0	14	231,883	0.09	14,0,0	4.21	0,332
O_5	3,4,3,3,3,3,2	445,319	44.30	21,0,0	0,1,2,2,2,3,5	463,583	0.82	15,0,0	15	462,785	0.09	15,0,0	4.10	0,172
O_6	1,2,1,2,1,2,1	18,031	44.36	14,61,6	0,1,1,1,1,2,3	19,480	0.36	9,0,0	8	18,902	0.02	8,0,0	8.04	3,062
O_7	3,5,3,3,3,3,2	56,594	43.89	22,0,0	0,2,2,2,2,3,4	58,571	0.83	15,0,0	15	57,728	0.08	15,0,0	3.49	1,460
O_8	1,2,1,2,1,2,1	9,016	44.82	14,61,6	0,1,1,1,1,2,2	9,485	0.25	8,0,0	8	8,879	0.03	8,0,0	5.21	6,827
O_9	4,15,5,4,4,4,4	30,187	43.83	40,0,0	0,2,2,2,3,3,4	29,306	0.84	16,0,0	16	28,409	0.10	16,0,0	-2.92	3,156
O_{10}	3,4,3,3,3,3,2	26,541	43.76	21,0,0	0,2,2,2,2,3,3	27,077	0.58	14,0,0	13	26,280	0.05	13,0,0	2.02	3,036
O_{11}	2,3,2,2,2,2,2	24,211	46.64	15,0,0	0,1,2,2,2,2,3	25,204	0.47	12,0,0	11	24,461	0.04	11,0,0	4.10	3,039

Table 32 Numerical results for scenario L_{11} of the 8-machine line

Scen.	IB	EB			CW			%ΔP*						
		$C_1^* - C_7^*$	P*	cpu iter	$C_1^* - C_7^*$	P*	cpu iter	E-I	E-C					
T_1														
O_1	1,2,2,3,3,2,2	0,0,0,1,1,4,5	23.832	45.24	15,0,0	25.656	0.40	11,0,0	11	25.656	0.04	11,0,0	7.65	0.001
O_2	1,1,1,2,2,2,1	0,0,0,0,1,2,4	2.910	44.81	11,110,1	3.495	0.16	7,0,0	7	3.495	0.02	7,0,0	20.10	0.000
O_3	2,2,2,3,3,3,2	0,0,0,2,1,4,5	45.534	44.14	17,0,0	48.303	0.56	12,0,0	12	48.303	0.05	12,0,0	6.08	0.001
O_4	2,2,3,3,4,3,2	0,0,0,1,2,4,6	220.323	44.78	19,0,0	230.157	1.03	13,0,1	13	230.155	0.05	13,0,0	4.46	0.001
O_5	2,2,3,3,4,3,2	0,0,0,1,2,4,6	439.153	45.84	19,0,0	457.528	0.95	13,0,1	13	457.524	0.05	13,0,0	4.18	0.001
O_6	1,1,1,2,2,2,1	0,0,0,0,2,2,4	17.865	44.90	11,57,1	19.870	0.20	8,0,0	8	19.870	0.02	8,0,0	11.23	0.001
O_7	2,2,3,4,4,3,2	0,0,0,1,2,5,7	56.134	44.01	20,0,0	58.860	0.99	15,0,0	15	58.859	0.13	15,0,0	4.85	0.000
O_8	1,1,1,2,2,2,1	0,0,0,0,2,2,4	8.932	44.51	11,57,1	9.935	0.28	8,0,0	8	9.935	0.03	8,0,0	11.23	0.001
O_9	2,3,3,5,12,5,4	0,1,0,0,1,6,7	29.577	43.89	34,0,1	29.530	1.75	15,0,2	15	29.529	0.08	15,0,0	-0.16	0.001
O_{10}	2,2,3,3,4,3,2	0,0,0,1,2,4,6	26.227	43.85	19,0,0	27.472	0.93	13,0,1	13	27.472	0.05	13,0,0	4.75	0.001
O_{11}	1,2,2,3,3,2,2	0,0,0,1,1,4,5	23.832	44.34	15,0,0	25.656	0.40	11,0,0	11	25.656	0.04	11,0,0	7.65	0.001
T_2														
O_1	1,2,2,3,3,2,2	0,1,1,2,2,2,3	23.832	44.24	15,0,0	25.300	0.41	11,0,0	11	24.966	0.04	11,0,0	6.16	1.339
O_2	1,1,1,2,2,2,1	0,1,1,1,1,2,2	2.910	44.29	11,110,1	3.227	0.26	8,11,0	7	2.982	0.02	7,0,0	10.90	8.221
O_3	2,2,2,3,3,3,2	0,1,1,2,2,2,4	45.534	44.02	17,0,0	47.928	0.48	12,0,0	12	47.588	0.04	12,0,0	5.26	0.715
O_4	2,2,3,3,4,3,2	0,1,1,1,2,3,5	220.323	43.89	19,0,0	229.747	1.09	13,0,1	13	229.419	0.05	13,0,0	4.28	0.143
O_5	2,2,3,3,4,3,2	0,1,1,1,2,3,5	439.153	43.81	19,0,0	457.104	1.01	13,0,1	13	456.789	0.05	13,0,0	4.09	0.069
O_6	1,1,1,2,2,2,1	0,0,1,1,1,2,3	17.865	46.10	11,57,1	19.562	0.23	8,0,0	8	19.299	0.02	8,0,0	9.50	1.364
O_7	2,2,3,4,4,3,2	0,1,1,2,3,3,5	56.134	43.97	20,0,0	58.451	1.05	15,0,0	15	58.093	0.09	15,0,0	4.13	0.616
O_8	1,1,1,2,2,2,1	0,1,1,1,1,2,2	8.932	45.00	11,57,1	9.643	0.25	8,0,0	8	9.363	0.03	8,0,0	7.96	2.991
O_9	2,3,3,5,12,5,4	1,1,1,2,3,3,4	29.577	44.03	34,0,1	29.160	1.05	15,0,0	15	28.763	0.09	15,0,0	-1.41	1.380
O_{10}	2,2,3,3,4,3,2	0,1,1,2,2,3,4	26.227	43.95	19,0,0	27.101	0.64	13,0,0	13	26.736	0.06	13,0,0	3.34	1.365
O_{11}	1,2,2,3,3,2,2	0,1,1,2,2,2,3	23.832	44.20	15,0,0	25.300	0.47	11,0,0	11	24.966	0.05	11,0,0	6.16	1.339

Table 32 (continued)

Scen.	IB	EB						CW						%ΔP*		
		C ₁ [*] -C ₇ [*]	P*	cpu	iter	C ₁ [*] -C ₇ [*]	P*	cpu	iter	C*	P*	cpu	iter	E-I	E-C	
																C ₁ [*] -C ₇ [*]
T ₃																
O ₁	1,2,2,3,3,2,2	23.832	44.72	15.0,0	0,1,1,2,2,2,3	25.000	0.40	11,0,0	11	24.277	0.04	11,0,0	4.90	2.978		
O ₂	1,1,1,2,2,2,1	2.910	44.63	11,110,1	0,1,1,2,1,1,2	2.991	0.38	8,33,1	7	2.469	0.02	7,33,0	2.76	21.113		
O ₃	2,2,2,3,3,3,2	45.534	44.26	17,0,0	0,1,1,2,2,2,4	47.590	0.51	12,0,0	12	46.873	0.04	12,0,0	4.52	1.531		
O ₄	2,2,3,3,4,3,2	220.323	44.19	19,0,0	0,1,1,1,2,3,5	229.353	1.06	13,0,1	13	228.683	0.05	13,0,0	4.10	0.293		
O ₅	2,2,3,3,4,3,2	439.153	43.98	19,0,0	0,1,1,1,2,3,5	456.710	1.13	13,0,1	13	456.053	0.05	13,0,0	4.00	0.144		
O ₆	1,1,1,2,2,2,1	17.865	44.29	11,57,1	0,1,1,1,1,2,2	19.287	0.24	8,0,0	8	18.727	0.02	8,0,0	7.96	2.991		
O ₇	2,2,3,4,4,3,2	56.134	44.03	20,0,0	1,1,1,2,3,3,4	58.088	0.89	15,0,0	14	57.339	0.06	14,0,0	3.48	1.307		
O ₈	1,1,1,2,2,2,1	8.932	44.41	11,57,1	0,1,1,1,1,2,2	9.404	0.35	8,0,0	8	8.792	0.02	8,0,0	5.28	6.961		
O ₉	2,3,3,5,12,5,4	29.577	43.63	34,0,1	1,1,1,2,3,3,4	28.818	1.01	15,0,0	14	28.006	0.06	14,0,0	-2.57	2.898		
O ₁₀	2,2,3,3,4,3,2	26.227	44.11	19,0,0	1,1,1,2,2,3,3	26.781	0.65	13,0,0	12	26.015	0.04	12,0,0	2.11	2.944		
O ₁₁	1,2,2,3,3,2,2	23.832	44.17	15,0,0	0,1,1,2,2,2,3	25.000	0.40	11,0,0	11	24.277	0.04	11,0,0	4.90	2.978		

Table 33 Numerical results for scenario L_{12} of the 8-machine line

Scen.	IB		EB			CW			%ΔP*					
	$C_1^*C_7^*$	P^*	cpu	iter	$C_1^*C_7^*$	P^*	cpu	iter	cpu	iter	E-I	E-C		
T_1														
O_1	1,2,2,2,2,3,2	23.779	44.56	14,0,0	0,0,0,2,1,1,7	25.533	0.67	11,0,1	11	25.533	0.04	11,0,0	7.38	0.000
O_2	1,1,2,1,2,2,2	2.903	44.38	10,113,1	0,0,0,0,0,2,5	3.495	0.20	7,0,0	7	3.495	0.02	7,0,0	20.41	0.000
O_3	2,2,2,2,3,3,3	45.252	43.99	17,0,0	0,0,1,1,2,0,8	48.000	1.16	12,0,2	12	47.999	0.05	12,0,0	6.07	0.003
O_4	2,2,2,2,3,3,3	218.886	43.71	17,0,0	0,1,1,1,2,0,8	228.313	1.42	13,0,2	13	228.295	0.06	13,0,0	4.31	0.008
O_5	2,2,2,2,3,4,3	435.671	44.06	18,0,0	0,1,1,1,2,0,8	453.843	1.39	13,0,2	13	453.805	0.06	13,0,0	4.17	0.008
O_6	1,1,2,1,2,2,2	17.606	44.45	12,43,1	0,0,0,0,0,1,7	19.754	0.25	8,0,1	8	19.754	0.02	8,0,0	12.20	0.000
O_7	2,2,2,3,3,4,3	55.927	43.90	19,0,0	0,0,1,2,1,1,9	58.620	1.94	14,0,3	14	58.620	0.07	14,0,0	4.82	0.001
O_8	1,1,2,1,2,2,2	8.803	44.25	12,43,1	0,0,0,0,0,1,7	9.877	0.25	8,0,1	8	9.877	0.03	8,0,0	12.20	0.000
O_9	2,2,3,3,4,5,12	29.129	43.61	31,0,0	0,1,1,1,2,0,9	29.289	2.02	14,0,3	14	29.287	0.07	14,0,0	0.55	0.010
O_{10}	2,2,2,2,3,3,3	26.098	44.58	17,0,0	0,0,1,1,2,0,8	27.293	1.09	12,0,2	12	27.293	0.05	12,0,0	4.58	0.002
O_{11}	1,2,2,2,2,3,2	23.779	44.19	14,0,0	0,0,0,2,1,1,7	25.533	0.60	11,0,1	11	25.533	0.04	11,0,0	7.38	0.000
T_2														
O_1	1,2,2,2,2,3,2	23.779	44.14	14,0,0	0,1,1,1,1,3,4	25.187	0.46	11,0,0	11	24.844	0.04	11,0,0	5.92	1.380
O_2	1,1,1,2,1,2,2	2.903	44.74	10,113,1	0,1,1,1,1,2,2	3.238	0.34	8,11,0	7	2.982	0.02	7,0,0	11.54	8.571
O_3	2,2,2,2,3,3,3	45.252	44.03	17,0,0	0,1,1,1,1,3,5	47.625	0.75	12,0,0	12	47.284	0.05	12,0,0	5.24	0.721
O_4	2,2,2,2,3,3,3	218.886	43.90	17,0,0	0,1,1,1,2,2,6	227.895	1.17	13,0,1	13	227.559	0.06	13,0,0	4.12	0.148
O_5	2,2,2,2,3,4,3	435.671	44.05	18,0,0	0,1,1,1,1,2,7	453.410	0.67	13,0,0	13	453.069	0.06	13,0,0	4.07	0.075
O_6	1,1,2,1,2,2,2	17.606	44.51	12,43,1	0,0,1,1,1,2,3	19.459	0.25	8,0,0	8	19.182	0.02	8,0,0	10.52	1.441
O_7	2,2,2,3,3,4,3	55.927	43.89	19,0,0	0,1,1,1,2,3,6	58.206	1.43	14,0,1	14	57.867	0.07	14,0,0	4.07	0.585
O_8	1,1,2,1,2,2,2	8.803	44.40	12,43,1	0,0,1,1,1,2,3	9.590	0.24	8,0,0	8	9.305	0.02	8,0,0	8.94	3.059
O_9	2,2,3,3,4,5,12	29.129	43.86	31,0,0	1,1,1,1,2,3,5	28.915	0.78	14,0,0	14	28.534	0.07	14,0,0	-0.73	1.337
O_{10}	2,2,2,2,3,3,3	26.098	44.04	17,0,0	0,1,1,1,1,3,5	26.925	0.67	12,0,0	12	26.578	0.05	12,0,0	3.17	1.306
O_{11}	1,2,2,2,2,3,2	23.779	43.97	14,0,0	0,1,1,1,1,3,4	25.187	0.46	11,0,0	11	24.844	0.04	11,0,0	5.92	1.380

Table 33 (continued)

Scen.	IB	EB			CW			%ΔP*						
		$C_1^*C_7^*$	P^*	cpu iter	$C_1^*C_7^*$	P^*	cpu iter	E-I	E-C					
T_3														
O_1	1,2,2,2,2,3,2	23.779	44.25	14,0,0	0,1,1,1,1,3,4	24.867	0.46	11,0,0	11	24.154	0.04	11,0,0	4.57	2.951
O_2	1,1,1,2,1,2,2	2.903	44.71	10,113,1	0,1,1,1,1,2,2	3.025	0.30	8,6,0	7	2.469	0.02	7,33,0	4.20	22.495
O_3	2,2,2,2,3,3,3	45.252	44.02	17,0,0	0,1,1,1,2,3,4	47.267	0.67	12,0,0	12	46.569	0.05	12,0,0	4.45	1.499
O_4	2,2,2,2,3,3,3	218.886	44.38	17,0,0	0,1,1,1,1,3,6	227.500	0.66	13,0,0	13	226.824	0.06	13,0,0	3.94	0.298
O_5	2,2,2,2,3,4,3	435.671	44.11	18,0,0	0,1,1,1,2,2,6	453.008	1.13	13,0,1	13	452.334	0.06	13,0,0	3.98	0.149
O_6	1,1,2,1,2,2,2	17.606	44.40	12,43,1	0,0,1,1,1,2,3	19.180	0.25	8,0,0	8	18.611	0.02	8,0,0	8.94	3.059
O_7	2,2,2,3,3,4,3	55.927	43.95	19,0,0	1,1,1,1,1,4,5	57.832	0.90	14,0,0	14	57.114	0.07	14,0,0	3.41	1.256
O_8	1,1,2,1,2,2,2	8.803	44.30	12,43,1	0,1,1,1,1,2,2	9.363	0.27	8,0,0	8	8.734	0.02	8,0,0	6.36	7.205
O_9	2,2,3,3,4,5,12	29.129	44.47	31,0,0	1,1,1,1,2,3,5	28.574	1.36	14,0,1	14	27.781	0.08	14,0,0	-1.90	2.854
O_{10}	2,2,2,2,3,3,3	26.098	44.27	17,0,0	1,1,1,1,1,3,4	26.613	0.52	12,0,0	12	25.863	0.05	12,0,0	1.97	2.900
O_{11}	1,2,2,2,2,3,2	23.779	44.55	14,0,0	0,1,1,1,1,3,4	24.867	0.51	11,0,0	11	24.154	0.04	11,0,0	4.57	2.951

References

- Alfieri A, Matta A (2012) Mathematical programming formulations for approximate simulation of multi-stage production systems. *Eur J Oper Res* 219(3):773–783
- Alfieri A, Matta A (2013) Mathematical programming time-based decomposition algorithm for discrete event simulation. *Eur J Oper Res* 231(3):557–566
- Altioik T (1997) Performance analysis of manufacturing systems, Springer series in operations research. Springer, New York
- Billar S, Li J, Meerkov SM (2009) Bottlenecks in Bernoulli serial lines with rework. *IEEE Trans Autom Sci Eng* 7(2):208–217
- Bonvik AM, Couch CE, Gershwin SB (1997) A comparison of production-line control mechanisms. *Int J Prod Res* 35(3):789–804
- Chan WKV, Schruben L (2008) Optimization models of discrete-event system dynamics. *Oper Res* 56(5):1218–1237
- Demir L, Tunali S, Eliiyi DT (2014) The state of the art on buffer allocation problem: a comprehensive survey. *J Intell Manuf* 25(3):271–392
- Diamantidis AC, Papadopoulos CT (2004) A dynamic programming algorithm for the buffer allocation problem in homogeneous asymptotically reliable serial production lines. *Math Probl Eng* 3:209–223
- Enginarlar E, Li J, Meerkov SM (2005) How lean can lean buffers be? *IIE Trans* 37(4):333–342
- Framinan JM, González PL, Ruiz-Usano R (2003) The CONWIP production control system: Review and research issues. *Prod Plan Control* 14(3):255–265
- Gaury EGA, Pierreval H, Kleijnen JPC (2000) An evolutionary approach to select a pull system among Kanban, Conwip and Hybrid. *J Intell Manuf* 11(2):157–167
- Gershwin SB, Schor GE (2000) Efficient algorithms for buffer space allocation. *Ann Oper Res* 93(1):117–144
- Gstettner S, Kuhn H (1996) Analysis of production control systems kanban and CONWIP. *Int J Prod Res* 34(11):3253–3273
- Helber S (2001) Cash-flow-oriented buffer allocation in stochastic flow lines. *Int J Prod Res* 39(14):3061–3083
- Helber S, Schimmelpfeng K, Stolletz R, Lagerschausen S (2011) Using linear programming to analyze and optimize stochastic flow lines. *Ann Oper Res* 182(1):193–211
- Koukourmalos S, Liberopoulos G (2005) An analytical method for the performance evaluation of echelon kanban control systems. *OR Spectr* 27(2–3):339–368
- Kramer SA, Love RF (1970) A model for optimizing the buffer inventory storage size in a sequential production system. *AIIE Trans* 2(1):64–69
- Lavoie P, Gharbi A, Kenne J-P (2010) A comparative study of pull control mechanisms for unreliable homogeneous transfer lines. *Int J Prod Econ* 124(1):241–251
- Levantesi R, Matta A, Tolio T (2001) A new algorithm for buffer allocation in production lines. In: Proceedings of the 3rd Aegean international conference on design and analysis of manufacturing systems, May 19–22, Tinos Island, Greece, pp 279–288
- Li J, Meerkov SM (2000) Production variability in manufacturing systems: Bernoulli reliability case. *Ann Oper Res* 93(1):299–324
- Li J, Meerkov SM (2009) Production systems engineering. Springer, New York
- Liberopoulos G (2018) Performance evaluation of a production line operated under an echelon buffer policy. *IIE Trans* 50(3):161–177
- Liberopoulos G, Dallery Y (2000) A unified framework for pull control mechanisms in multistage manufacturing systems. *Ann Oper Res* 93(1–4):325–355
- Meerkov SM, Zhang L (2008) Transient behavior of serial production lines with Bernoulli machines. *IIE Trans* 40(3):297–312
- Meerkov SM, Zhang L (2011) Bernoulli production lines with quality–quantity coupling machines: monotonicity properties and bottlenecks. *Ann Oper Res* 182(1):119–131
- Mitra D, Mitrani I (1989) Control and coordination policies for systems with buffers. *Perform Eval Rev* 17(1):156–164
- Shi C, Gershwin SB (2009) An efficient buffer design algorithm for production line profit maximization. *Int J Prod Econ* 122(2):725–740
- Shi C, Gershwin SB (2014) A segmentation approach for solving buffer allocation problems in large production systems. *Int J Prod Res* 54(20):6121–6141

- Smith JM, Daskalaki S (1988) Buffer space allocation in automated assembly lines. *Oper Res* 36(2):342–358
- Spearman ML, Woodruff DL, Hopp WJ (1990) CONWIP: a pull alternative to Kanban. *Int J Prod Res* 28(5):879–894
- Spinellis D, Papadopoulos C, Smith JM (2000) Large production line optimization using simulated annealing. *Int J Prod Res* 38(3):509–541
- Tan B (2015) Mathematical programming representations of the dynamics of continuous-flow production systems. *IIE Trans* 47(2):173–189
- Tempelmeier H (2003) Practical considerations in the optimization of flow production systems. *Int J Prod Res* 41(1):149–170
- Van Ryzin G, Lou SXC, Gershwin SB (1993) Production control for a tandem two-machine system. *IIE Trans* 25(5):5–20
- Weiss S, Stolletz R (2015) Buffer allocation in stochastic flow lines via sample-based optimization with initial bounds. *OR Spectr* 37(4):869–902
- Weiss S, Schwarz J, Stolletz R (2018) The buffer allocation problem: formulations, solution methods, and instances. *IIE Trans*. <https://doi.org/10.1080/24725854.2018.1442031>

Publisher's Note Springer Nature remains neutral with regard to jurisdictional claims in published maps and institutional affiliations.

George Liberopoulos received the B.S. and M.Eng. degrees in Mechanical Engineering from Cornell University, Ithaca, NY, in 1985 and 1986, respectively, and the Ph.D. degree in Manufacturing Engineering from Boston University, Boston, MA, in 1993. Currently, he is Professor of Production Management and Director of the Production Management Laboratory in the Department of Mechanical Engineering at the University of Thessaly, Volos, Greece. His research focuses on systems analysis with the use of operations research, applied probability and automatic control methods, and applications in production and operations modeling, analysis and control, supply chain management, and design of electricity markets.