



# Identification of CDC20 as an immune infiltration-correlated prognostic biomarker in hepatocellular carcinoma

Chen Xiong<sup>1</sup> · Zhihui Wang<sup>1</sup> · Guifu Wang<sup>1</sup> · Chi Zhang<sup>2</sup> · Shengjie Jin<sup>2</sup> · Guoqing Jiang<sup>2</sup> · Dousheng Bai<sup>2</sup> 

Received: 6 April 2021 / Accepted: 28 April 2021 / Published online: 3 May 2021

© The Author(s), under exclusive licence to Springer Science+Business Media, LLC, part of Springer Nature 2021

## Summary

Hepatocellular carcinoma (HCC) is a malignancy with a poor prognosis. E3 ubiquitin-protein ligases play essential roles in HCC, such as regulating progression, migration, and metastasis. We aimed to explore a hub E3 ubiquitin-protein ligase gene and verify its association with prognosis and immune cell infiltration in HCC. Cell division cycle 20 (CDC20) was identified as a hub E3 ubiquitin-protein ligase in HCC by determining the intersecting genes in a protein-protein interaction (PPI) network of differentially expressed genes (DEGs) using HCC data from the International Cancer Genome Consortium (ICGC) and the gene list of 919 E3 ubiquitin-protein ligases. DEGs and their correlations with clinicopathological features were explored in The Cancer Genome Atlas (TCGA), ICGC, and Gene Expression Omnibus (GEO) databases via the Wilcoxon signed-rank test. The prognostic value of CDC20 was illustrated by Kaplan-Meier (K-M) curves and Cox regression analyses. Subsequently, the correlation between CDC20 and immune infiltration was demonstrated via the Tumor Immune Estimation Resource (TIMER) and Gene Expression Profiling Interactive Analysis (GEPIA). CDC20 expression was significantly higher in HCC than in normal tissues (all  $P < 0.05$ ). High CDC20 expression predicted a poor prognosis and might be an independent risk factor in HCC ( $P < 0.05$ ). Additionally, CDC20 was correlated with the immune infiltration of CD8 + T cells, T cells (general), monocytes, and exhausted T cells. This study reveals the potential prognostic value of CDC20 in HCC and demonstrates that CDC20 may be an immune-associated therapeutic target in HCC because of its correlation with immune infiltration.

**Keywords** CDC20 · hepatocellular carcinoma · E3 ubiquitin-protein ligase · immune infiltration · prognosis

## Introduction

Hepatocellular carcinoma (HCC) is the sixth most common primary malignancy and fourth leading cause of cancer-related death worldwide [1]. Surgical resection is the preferred treatment for HCC, and many new therapeutic strategies, such as targeted therapy and immunotherapy, can be used to treat this disease in recent years [2]. However, because of the characteristics of invasion, metastasis, and immune escape, although many advances have improved HCC treatment, its prognosis remains unsatisfactory [3, 4]. Therefore, it is

necessary to explore the relevant mechanism of HCC progression and identify novel therapeutic targets to improve the prognosis of HCC.

E3 ubiquitin-protein ligases are a series of enzymes that catalyse the degradation of proteins by transferring ubiquitin to their substrates [5]. Because an increasing number of E3 ubiquitin-protein ligases plays oncogenic or anti-oncogenic roles in cancers, the important roles of E3 ubiquitin-protein ligases in the development and carcinogenesis of malignancies have been illustrated. Some E3 ubiquitin ligases are correlated with chemoresistance and may be potential cancer treatment targets [6, 7]. Therefore, it is necessary to explore hub E3 ubiquitin-protein ligases in HCC to identify new biomarkers and treatment targets.

The immune microenvironment, a crucial part of the tumor microenvironment, comprises many immune cells, such as T cells, natural killer (NK) cells, and macrophages [8]. Importantly, it is associated with cancer prognosis. For example, tumors with a regulatory immune microenvironment are usually associated with a dismal prognosis [9]. Recently,

---

Chen Xiong and Zhihui Wang contributed equally to this work.

✉ Dousheng Bai  
drbaidousheng@163.com

<sup>1</sup> Dalian Medical University, 116044 Dalian, Liaoning, China

<sup>2</sup> Department of Hepatobiliary Surgery, Clinical Medical College, Yangzhou University, 98 West Nantong Rd, 225009 Yangzhou, Jiangsu, China

immunotherapy has been more widely used because of its excellent curative effect, which is associated with the components and mechanisms of the immune microenvironment. The targets of immunotherapy, such as PD-1, PDL-1, and CTLA4, are biomarkers of relevant immune cells in the immune microenvironment [10, 11]. Thus, exploring novel therapeutic targets associated with the immune microenvironment is critical to identify new treatment strategies for cancer.

In the present study, we identified cell division cycle 20 (CDC20) as a hub E3 ubiquitin-protein ligase in HCC. Subsequently, we explored the prognostic value of CDC20 in HCC by analysing the mRNA-sequencing data and clinical prognostic information downloaded from several databases. Next, we analysed the relationship between CDC20 and immune cells in the immune environment using an online database. The outcomes illustrated an oncogenic role for CDC20 and a possible association between CDC20 and the tumor immune environment in HCC.

## Materials and methods

### Data and information

In total, 919 E3 ubiquitin-protein ligases were obtained from the Integrated annotations for Ubiquitin and Ubiquitin-like Conjugation Database (IUUCD) (<http://iuucd.biocuckoo.org/>), which contains information on different ubiquitinating and deubiquitinating enzymes [12]. The identifications of genes in this list were translated to official gene symbols by Perl language. The gene expression data and corresponding clinical information of 231 HCC patients were acquired from the International Cancer Genome Consortium (ICGC) database (<https://dcc.icgc.org/projects/LIRI-JP>) [13]. All the patients in the ICGC cohort were from Japan. Other RNA-sequencing data on CDC20 and the prognostic data on an additional 371 HCC patients were obtained from The Cancer Genome Atlas (TCGA) database up to January 3, 2021 (<https://portal.gdc.cancer.gov/>) [14]. Additionally, other expression data on CDC20 and the clinicopathologic features of HCC patients were downloaded from the “GSE14520”, “GSE45267”, “GSE76427”, and “GSE121248” datasets in the Gene Expression Omnibus (GEO) database (<https://www.ncbi.nlm.nih.gov/geo>) [15]. Immunohistochemical figures were obtained from the Human Protein Atlas (HPA) database (<https://www.proteinatlas.org/>).

### Identifying hub E3 ubiquitin-protein ligases

We explored differentially expressed E3 ubiquitin-protein ligase genes by considering the intersecting genes of E3 ubiquitin-protein ligases and differentially expressed genes

(DEGs) in the ICGC ( $\log FC > 2$ ). The protein-protein interaction (PPI) network of the intersecting genes was analysed through using STRING (<https://www.string-db.org/>) [16]. The degrees of each intersecting gene in the PPI network were calculated by utilizing Cytoscape software (<https://cytoscape.org/>) [17]. The gene with the most degrees was identified as the hub E3 ubiquitin-protein ligase in HCC.

### Differential expression analysis

CDC20 was identified as the hub E3 ubiquitin-protein ligase in HCC. First, datasets from the TCGA, ICGC, and GEO databases (“GSE14520”, “GSE45267”, “GSE76427”, and “GSE121248”) were used to analyse the expression levels of CDC20 in HCC samples and normal hepatic samples. The Wilcoxon signed-rank test and “limma” package in R software 4.0.0 (<https://www.r-project.org/>) were used for analysis. The results were drawn via the “beeswarm” package in R software. Additionally, we acquired immunohistochemical images of CDC20 in HCC tissues and normal hepatic tissues from the HPA database.

### Evaluating the prognostic value of CDC20

Based on the information on CDC20 expression and overall survival data of HCC patients obtained from the TCGA, ICGC, and GEO (GSE14520) databases, Kaplan-Meier (K-M) curves and scatterplots were plotted through using the “survival” and “pheatmap” packages in R software to show the relationship between CDC20 and HCC prognosis. Additionally, receiver operating characteristic (ROC) curves were drawn to determine the areas under the curve (AUCs) of CDC20 at 1 year, 2 years, and 3 years, which were plotted using the “survival”, “survminer”, and “timeROC” packages in R software.

### Analysing the expression of CDC20 according to clinical features

To further explore the prognostic value of CDC20, we analysed CDC20 expression according to clinical features through univariate and multivariate Cox regression analyses with the “survival” package in R software. The AUCs of the ROC curves were used to compare the prognostic values of CDC20 and clinical features using the “survivalROC” package. Next, we investigated the correlations between the expression level of CDC20 and clinical characteristics of patients through using the “ggpubr” package in R software and Perl language (<https://www.perl.org/>). All the data and information were obtained from the TCGA database.

## Gene set enrichment analysis (GSEA) of CDC20

We divided all the HCC samples in the TCGA database into the CDC20<sup>low</sup> group and the CDC20<sup>high</sup> group according to the median expression level of CDC20. Single-gene GSEA was employed to explore the significant biological pathways between the two groups through GSEA\_4.0.1 software (<https://www.gsea-msigdb.org/gsea/index.jsp>). All the results were plotted by the “ggplot2” package.

## Immune infiltration analysis of CDC20

The Tumor Immune Estimation Resource (TIMER) (<https://cistrome.shinyapps.io/timer/>) is a website used to systematically analyse the correlation between gene expression and the infiltration of immune cells with data on different cancers in TCGA [18]. We utilized TIMER to analyse the associations between CDC20 and 6 types of immune cells (CD4 + T cells, CD8 + T cells, B cells, macrophages, dendritic cells (DCs), and neutrophils) in the tumor microenvironment of HCC using a gene module. Corresponding results were plotted with TIMER to demonstrate correlations between the CDC20 expression level and tumor purity, a crucial element that can affect the analysis of immune infiltration via genomic approaches [19, 20]. The size of the partial correlation coefficient (partial cor) was used to reveal the degree of association between CDC20 expression and immune cell infiltration. Subsequently, multivariate Cox regression analysis was performed to compare the prognostic value of CDC20 with these 6 types of immune cells via the survival module in TIMER. The correlation between CDC20 and biomarkers of tumor-infiltrating immune cells (TIICs) was also explored using the “correlation” module. These immune cells comprised CD8 + T cells, T cells (general), B cells, monocytes, tumor-associated macrophages (TAMs), M1 macrophages, M2 macrophages, neutrophils, T helper 1 (Th1) cells, T helper 2 (Th2) cells, T helper 17 (Th17) cells, follicular helper T (Tfh) cells, regulatory T cells (Tregs), NK cells, DCs, and exhausted T cells. These immune cell types have been previously described [19, 21–24]. Gene Expression Profiling Interactive Analysis (GEPIA) (<http://gepia.cancer-pku.cn>) is an online database that contains RNA-sequencing data on 369 HCC samples and 160 normal liver samples from the TCGA and Genotype-Tissue Expression (GTEx) projects [25]. Using GEPIA and Spearman’s correlation, we further illustrated the associations between CDC20 expression and the gene biomarkers of four types of immune cells with the most significant correlations with CDC20 according to the TIMER results. Additionally, the value of R was employed to explain the correlation coefficient between CDC20 and these 4 types of immune cells according to the GEPIA results.

## Statistical analysis

All statistical analytical methods were based on the Perl language and R software 4.0.0. The expression data of CDC20 from 3 different databases were normalized by log<sub>2</sub> transformation. K-M survival curves were calculated based on log-rank tests. The associations of CDC20 with immune infiltration and gene markers of different immune cells were calculated by Spearman’s correlation. The associations of immune infiltration were determined using the following guide for the partial cor value: 0.00–0.19, “very weak”; 0.20–0.39, “weak”; 0.40–0.59, “moderate”; 0.60–0.79, “strong”; 0.80–1.0, “very strong” [26]. All *P* values less than 0.05 were considered to indicate statistical significance.

## Results

### CDC20 is identified as the hub gene

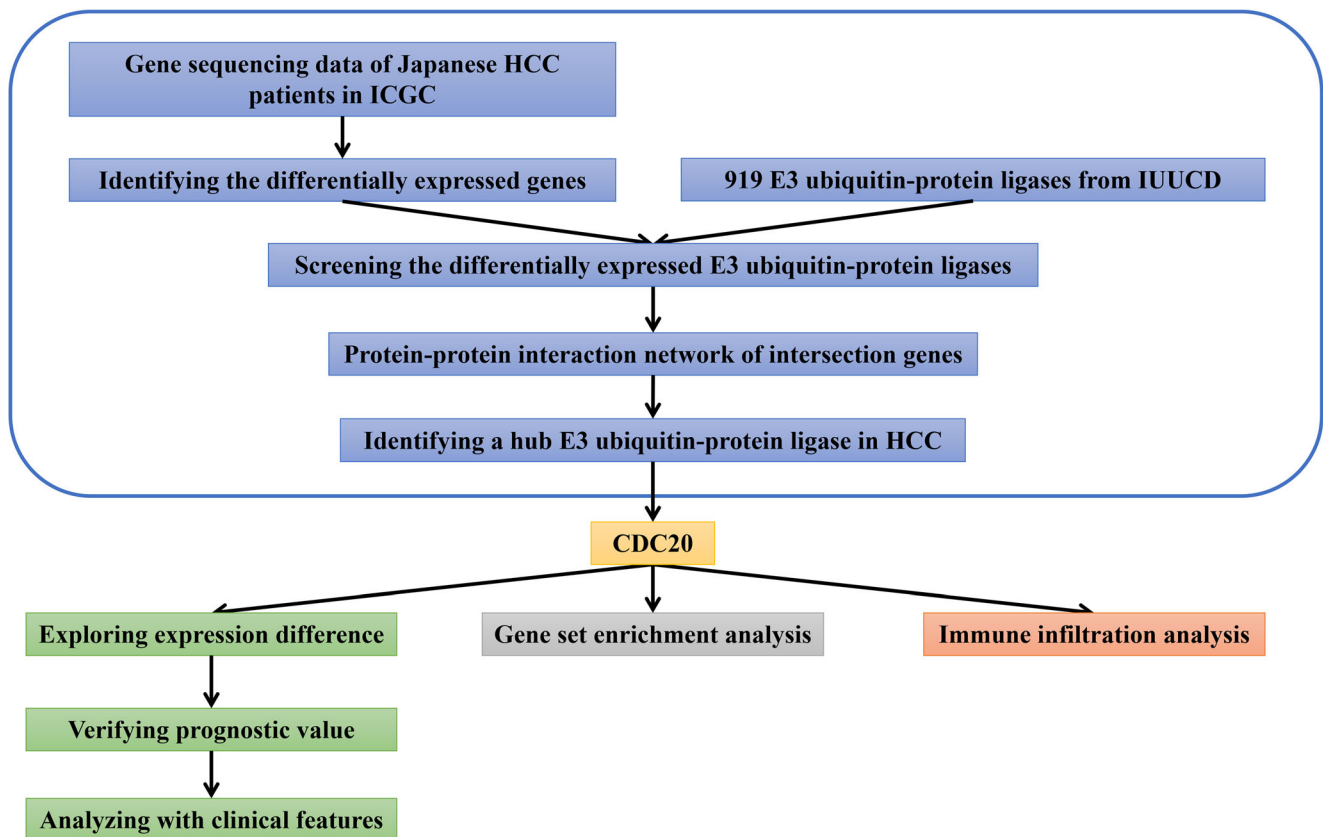
The entire research process is plotted in Fig. 1. In total, 548 DEGs obtained from the ICGC (log FC > 2) are shown in a volcano map (Fig. 2a). After identification transformation, the list of 919 E3 ubiquitin-protein ligase genes was decreased to 859 genes with official gene symbols. Twenty-one intersecting genes were identified (intersecting genes between DEGs in the ICGC and E3 ubiquitin-protein ligases) (Fig. 2b). Among these 21 genes, the PPI network of 16 genes with degrees > 0 is shown in Fig. 2c. From this figure, we identified CDC20 as the hub gene with the most connections between these 21 genes.

### Higher expression of CDC20 in HCC samples

To analyse the differential expression of CDC20 between HCC and normal samples, expression data from the TCGA, ICGC, and GEO databases were analysed. The mRNA levels of CDC20 from the three cohorts are shown in Fig. 3. The immunohistochemical staining results of CDC20 in HCC from the HPA database are also shown in Fig. 3. According to this figure, we speculated that the CDC20 expression level in all 4 databases was remarkably lower in normal hepatic samples than in HCC samples (*P* < 0.05).

### CDC20 predicts a poor prognosis in HCC

After exploring CDC20 expression in HCC, we verified the prognostic value of CDC20 in HCC by survival analysis via using K-M curves. Patients were ranked in ascending order by the CDC20 expression level and categorized into a high-



**Fig. 1** Processes of the entire study. The part inside the box identifies CDC20 as a hub E3 ubiquitin-protein ligase in HCC

expression group and a low-expression group according to the median CDC20 expression level. The K-M curves of CDC20 are plotted in Fig. 4a-c and show the prognostic value of CDC20 according to data obtained from the TCGA, ICGC, and GEO datasets. Survival analysis revealed that the prognosis of patients in all three cohorts with low CDC20 expression was much better than that of patients with high CDC20 expression ( $P < 0.05$ ). All the patient survival times and survival conditions are shown in scatterplots (Fig. 4d-f). Patients in the CDC20<sup>low</sup> group had a remarkably longer survival time and a lower survival rate than those in the CDC20<sup>high</sup> group. Additionally, the ROC curves demonstrated the ability of CDC20 to predict overall survival at 1 year, 2 years, and 3 years based on data from 3 datasets (Fig. 4g-i). These data demonstrate that CDC20 predicts a poor prognosis in HCC patients.

### Correlations between CDC20 and clinical features

We analysed the correlations between CDC20 expression and clinical features using the TCGA data. The statistically significant results are shown in Fig. 5a-c. According to this figure, we speculate that CDC20 expression is associated with pathological grade (Fig. 5a), TNM stage (Fig. 5b), and T stage

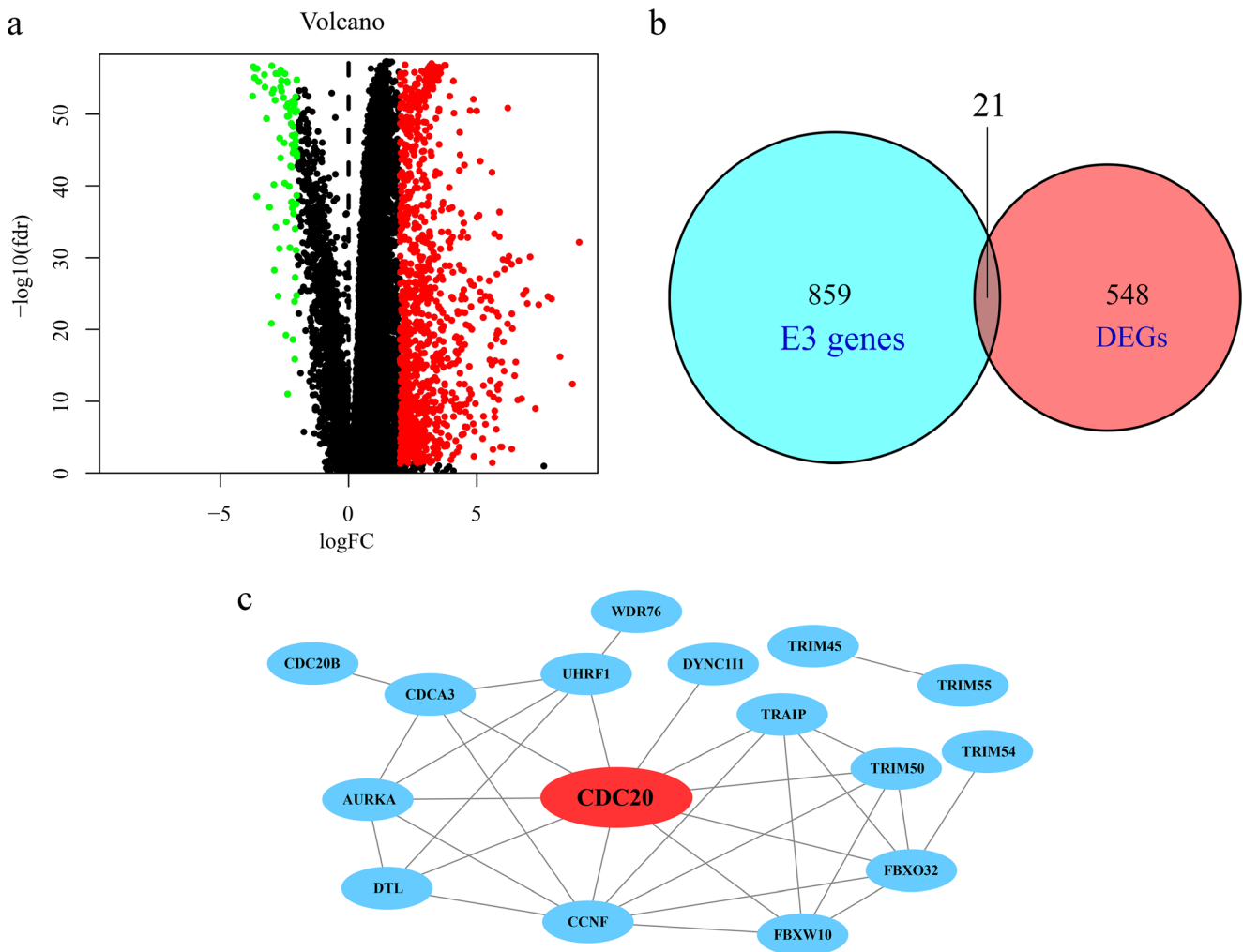
(Fig. 5c). CDC20 is highly expressed in samples with a higher pathological grade, TNM stage, and T stage (all  $P < 0.01$ ), indicating that CDC20 plays an oncogenic role in HCC.

### Comparing the prognostic values of CDC20 and clinical features

To further validate the prognostic value of CDC20, we compared the prognostic value of CDC20 with that of other clinical features. First, univariate and multivariate Cox regression analyses were performed (Fig. 5d, e). All the results showed that CDC20 had independent predictive value ( $P < 0.05$ ). Additionally, CDC20 had a higher AUC value (AUC = 0.728) than the other clinical features, indicating that CDC20 can be an independent prognostic risk factor in HCC (Fig. 5f).

### GSEA of CDC20

The potential biological functions of CDC20 in HCC were preliminarily explored using GSEA (Fig. 6). High expression of CDC20 might be involved in several signalling pathways related to cancers, such as the P53 signalling pathway, mTOR signalling pathway, and NOTCH signalling pathway. High



**Fig. 2** Procedures to identify CDC20. **a** A volcano map including 548 upregulated DEGs in ICGC ( $\log_{2} \text{FC} > 2$ ). **b** Venn diagram of the intersection of 548 DEGs in ICGC and 859 E3 ubiquitin-protein ligases

with official gene symbols. **c** PPI network of 16 intersecting genes ( $\text{degrees} > 0$ ) plotted using Cytoscape

expression of CDC20 was also associated with the cell cycle, ubiquitin-mediated proteolysis, and T-cell receptor signalling pathways.

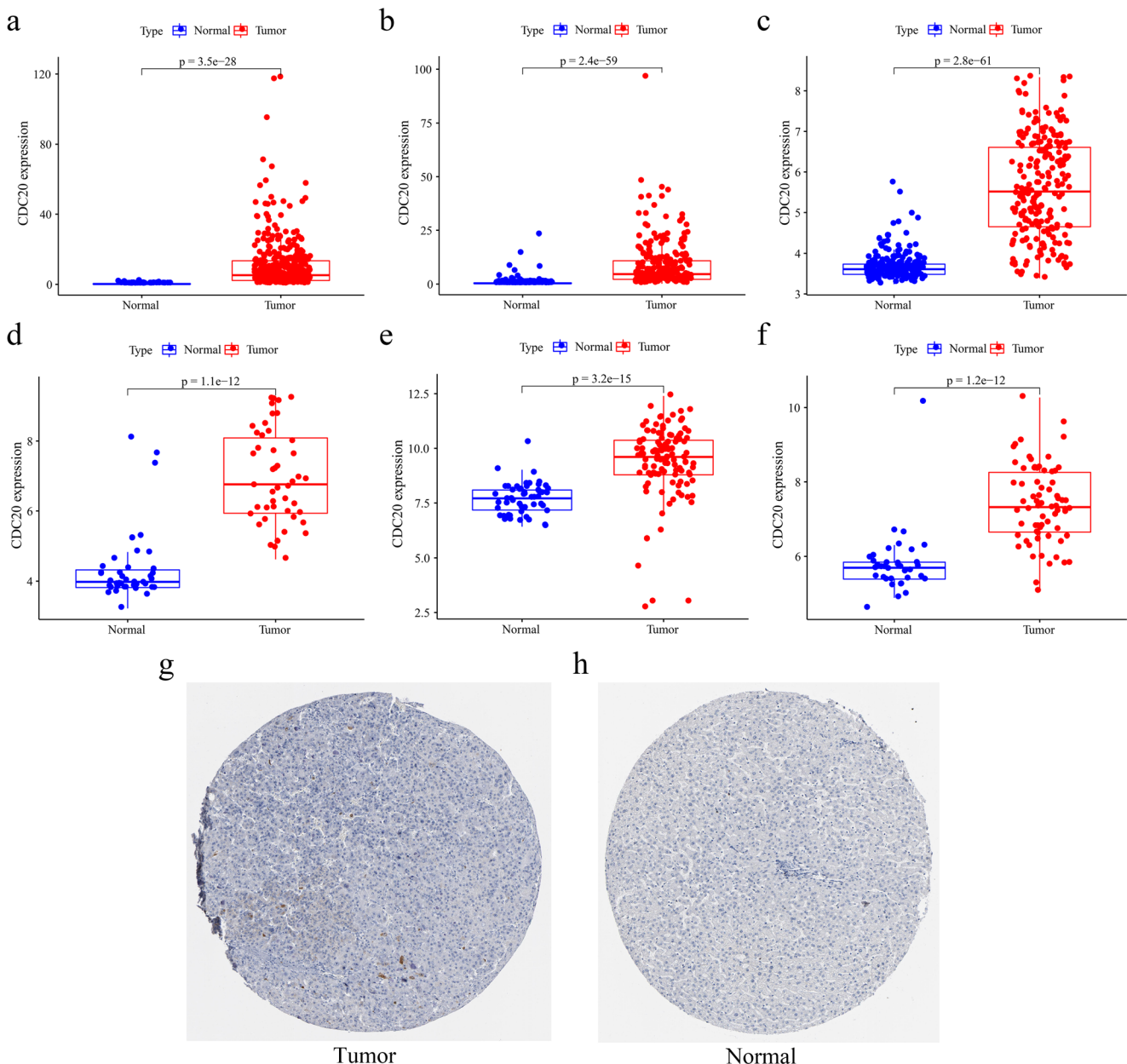
### Association between CDC20 and immune cell infiltration in HCC

GSEA reveals several pathways associated with CDC20, some of which are correlated with the immune microenvironment and the immune response [27, 28]. Thus, we investigated the association between CDC20 and 6 different immune cell types using TIMER. The CDC20 expression level was positively correlated with the infiltration levels of B cells (partial  $\text{cor} = 0.453$ ;  $P = 8.39\text{E-}19$ ), CD8 + T cells (partial  $\text{cor} = 0.352$ ;  $P = 2.01\text{E-}11$ ), CD4 + T cells (partial  $\text{cor} = 0.267$ ;  $P = 4.78\text{E-}07$ ), macrophages (partial  $\text{cor} = 0.419$ ;  $P = 6.63\text{E-}16$ ), neutrophils (partial  $\text{cor} = 0.315$ ;  $P = 2.12\text{E-}09$ ), and DCs

(partial  $\text{cor} = 0.46$ ;  $P = 3.54\text{E-}19$ ) (Fig. 7a), suggesting an association between CDC20 expression and immune cell infiltration in HCC. We also found an association between CDC20 and tumor purity (partial  $\text{cor} = 0.129$ ;  $P = 1.67\text{E-}02$ ) in HCC. To explore the prognostic value of CDC20 in HCC, multivariate Cox regression analysis of CDC20 and 6 types of immune cells was performed using TIMER (Fig. 7b). The analysis revealed that CDC20 had more independent prognostic value than the 6 types of immune cells ( $P < 0.05$ ).

### Correlations between CDC20 and gene markers of immune cells in HCC

The immune cell infiltration analysis suggested an association between CDC20 and immune cells in HCC. To further investigate why CDC20 correlated with high immune cell infiltration, the correlations between CDC20 and gene markers of



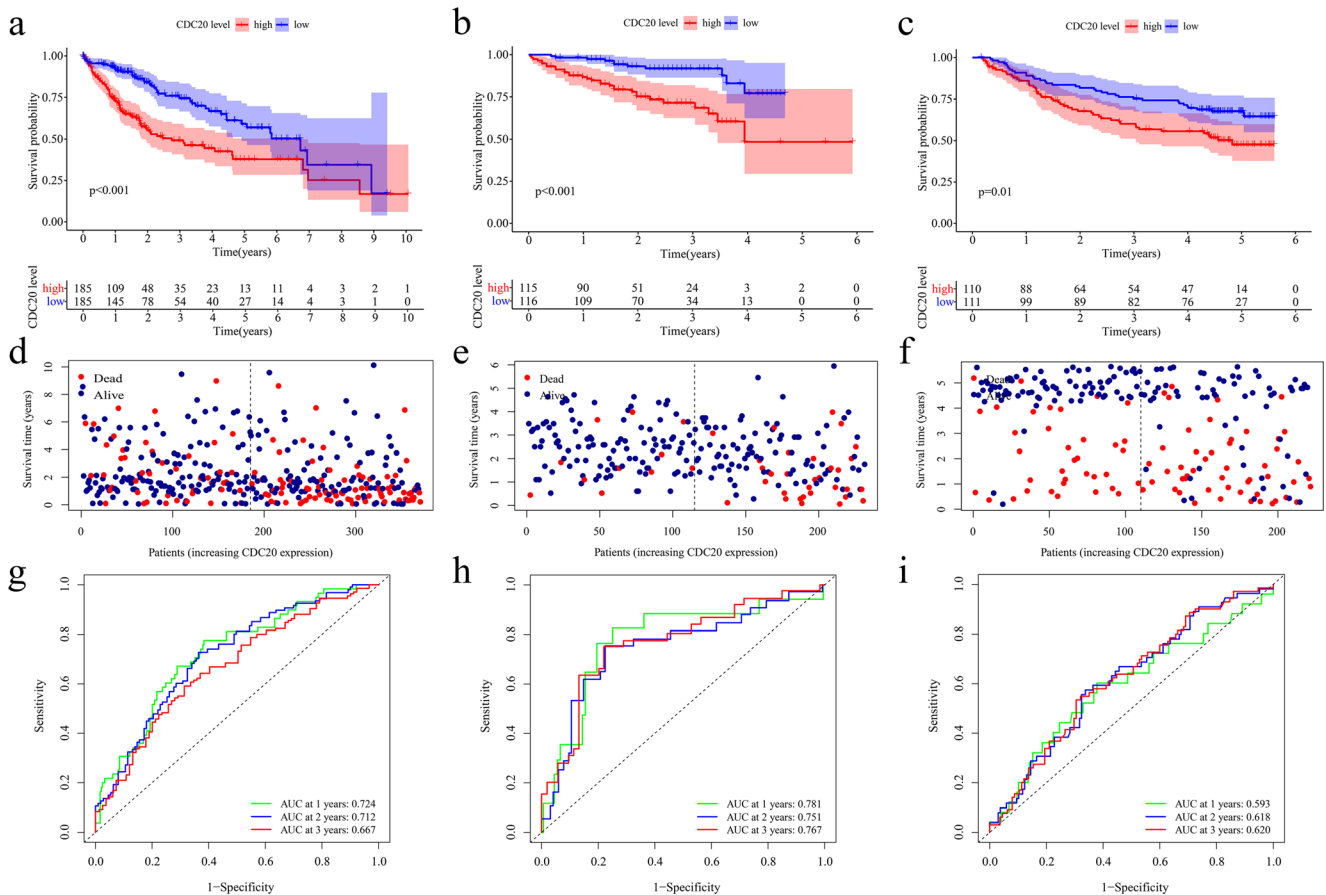
**Fig. 3** Differential expression of CDC20 between HCC and normal tissues in different databases. **a** Differential expression of CDC20 in TCGA. **b** Differential expression of CDC20 in ICGC. **c** Differential expression of CDC20 in GEO (GSE14520). **d** Differential expression

of CDC20 in GEO (GSE45267). **e** Differential expression of CDC20 in GEO (GSE76427). **f** Differential expression of CDC20 in GEO (GSE121248). **g-h** Immunohistochemical figures of CDC20 in HCC and normal tissue from the HPA database

several types of immune cells were analysed using TIMER and GEPIA.

The TIMER results are listed in Table 1. CDC20 expression was significantly correlated with the gene biomarkers of CD8 + T cells (CD8A and CD8B) after adjusting for tumor purity (Table 1; Fig. 8a; all  $P < 0.05$ ), indicating that CDC20 is related to a specific immune response. CDC20 was also associated with gene biomarkers of two other immune cell types—T cells (general) (CDC3D, CDC3E, and CD2) and monocytes (CD86 and CSF1R)—after adjusting for tumor purity (Table 1; Fig. 8b, c; all

$P < 0.05$ ). Additionally, the gene biomarkers of exhausted T cells, including CTLA4, PD-1, LAG3, GZMB, and TIM-3, were correlated with CDC20 expression in HCC (Table 1; Fig. 8d;  $P < 0.05$ ). Some gene biomarkers, such as PD-1 and CTLA4, are targets of immunotherapy, suggesting an association between CDC20 and immunotherapy in HCC. Subsequently, we validated the association between CDC20 and the gene biomarkers of 4 types of immune cells using the GEPIA website; all the results had significant statistical significance (all  $P < 0.05$ ; Table 2).



**Fig. 4** Prognostic value of CDC20 in HCC. **a-c** K-M curves of CDC20 using the data of HCC patients in the TCGA, ICGC, and GEO (GSE14520) datasets. **d-f** Scatterplots of the HCC patient survival time and survival condition from the TCGA, ICGC, and GEO (GSE14520)

datasets. **g-i** ROC curves of the AUC values of CDC20 at 1 year, 2 years, and 3 years based on data from the TCGA, ICGC, and GEO (GSE14520) datasets

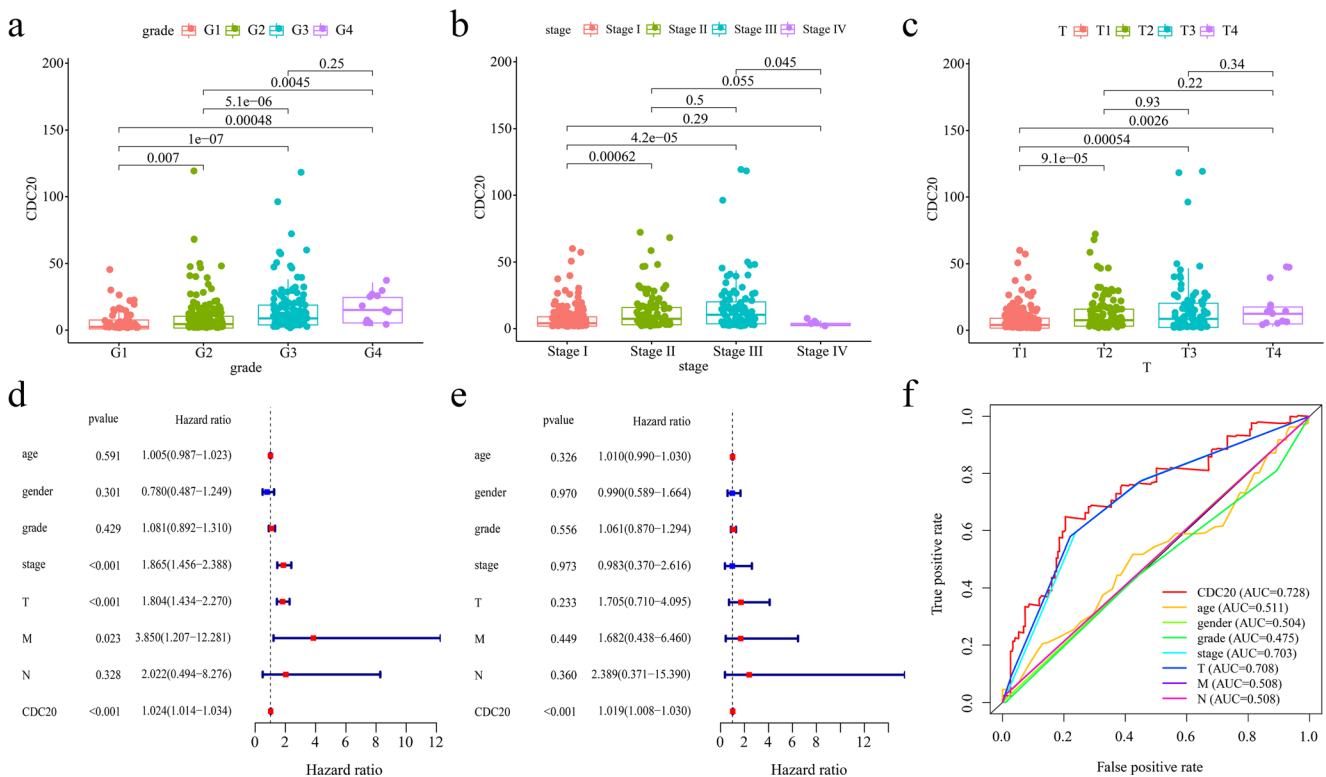
## Discussion

HCC is a global problem because of its high mortality and morbidity. Identifying new targets for the diagnosis and therapy of HCC is critical. Many E3 ubiquitin-protein ligases play essential roles, such as regulating progression, migration, and metastasis, in several carcinomas, including HCC [5, 29–31]. These studies showed that E3 ubiquitin-protein ligases might be potential therapeutic targets in cancers. Immunotherapy is a widely used treatment for many malignancies, including HCC. Immune cell infiltration in the immune microenvironment is associated with immunosurveillance and immunotherapy in HCC [32]. Ubiquitin signalling is associated with the immune response [33]. The E3 ubiquitin-protein ligase MDM2 maintains STAT5 stability to control T-cell immunity in tumors [34]. However, the association between E3 ubiquitin-protein ligases and immune cell infiltration has not been explored in HCC. Therefore, it will be novel and

meaningful to identify a hub E3 ubiquitin-protein ligase and analyse its association with immune cell infiltration in HCC.

In the present study, we identified CDC20 as a hub E3 ubiquitin-protein ligase in HCC and demonstrated its prognostic value in HCC using data from the TCGA, ICGC, GEO, and TIMER databases. All the results showed a strong oncogenic function of CDC20, and the prognosis of HCC patients with high CDC20 expression was poor.

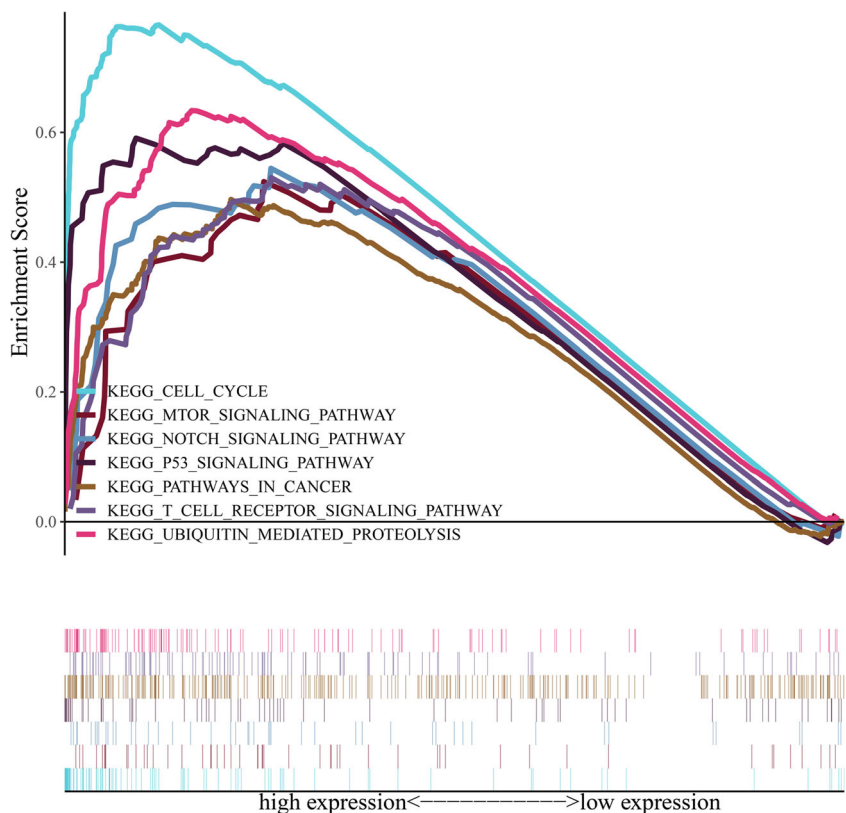
CDC20 is a hub gene in cell cycle progression and contributes to the progression or metastasis of several carcinomas, such as pancreatic cancer and breast cancer [35]. Alfarsi et al. verified that the high expression of CDC20 in oestrogen receptor-positive breast cancer predicted a poor prognosis and no response to endocrine therapy [36]. High expression of CDC20 also predicts a poor prognosis in patients with gastric cancer, prostate cancer, bladder cancer, and colorectal cancer [37–40]. CDC20 induces the radioresistance of bladder cancer by degrading FoxO1 [41]. Decreasing the CDC20



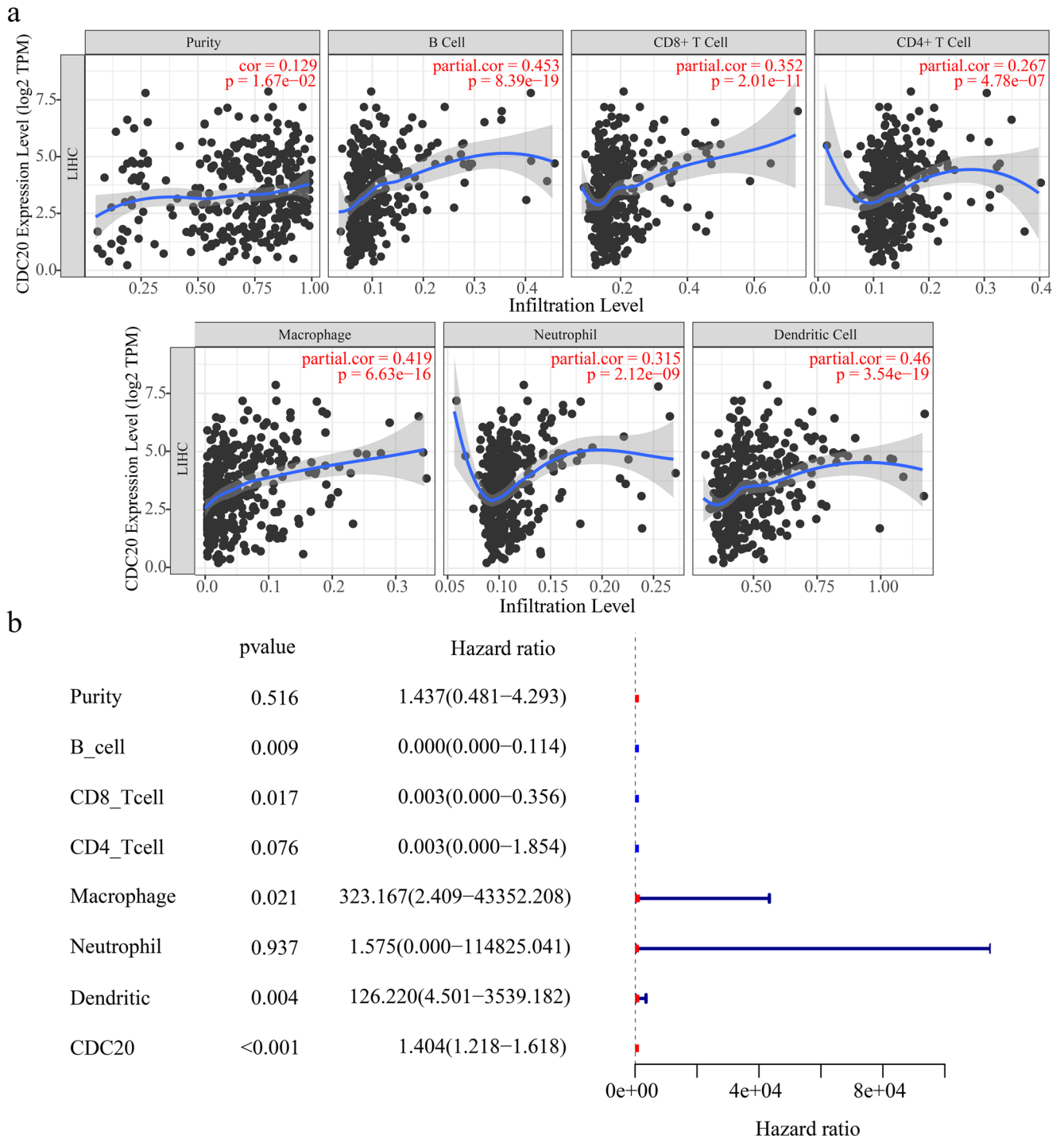
**Fig. 5** Analysing CDC20 using other clinical features. **a-c** Correlations between CDC20 expression and clinical features, including pathological grade, TNM stage, and T stage, using the data of HCC patients from TCGA. **d-e** Univariate Cox and Multivariate Cox regression analyses

between CDC20 expression and other clinical features. **f** ROC curves comparing the prognostic predictive value of CDC20 and other clinical features in HCC

**Fig. 6** Gene set enrichment analysis of CDC20 in HCC







**Fig. 7** Analysis of CDC20 using 6 types of immune cells in HCC via TIMER. **a** Immune infiltrate analysis between CDC20 and 6 types of immune cells. **b** Multivariate Cox regression analyses between CDC20 expression and 6 kinds of immune cells

expression level may improve radiosensitivity through Mcl-1/p-Chk1-mediated DNA damage and apoptosis in colorectal cancer [42]. In HCC, Shi et al [43] demonstrated that CDC20 promotes PHD3 ubiquitination and activates HIF-1 signalling to accelerate the proliferation of cancer cells. Additionally, Li et al [44] illustrated that the increased expression of CDC20 is associated with HCC proliferation. We

performed GSEA to explore potential biological functions and signalling pathways associated with CDC20 in HCC. The major functions and pathways were enriched in the P53 signalling, mTOR signalling, NOTCH signalling, cell cycle, ubiquitin-mediated proteolysis, and T-cell receptor signalling pathways. Among these pathways, the P53, mTOR and NOTCH signalling pathways are correlated with HCC

**Table 1** Correlation analysis between CDC20 and relative gene biomarkers of immune cells in TIMER

Description	Gene markers	HCC			
		None		Purity	
		partial cor	<i>p</i> value	partial cor	<i>p</i> value
CD8+T cell	CD8A	0.218	***	0.306	***
	CD8B	0.256	***	0.34	***
T cell (general)	CD3D	0.364	***	0.474	***
	CD3E	0.217	***	0.354	***
	CD2	0.243	***	0.367	***
B cell	CD19	0.275	***	0.342	***
	CD79A	0.165	*	0.26	***
Monocyte	CD86	0.328	***	0.462	***
	CD115(CSF1R)	0.179	**	0.301	***
TAM	CCL2	0.038	4.64E-01	0.116	3.19E-02
	CD68	0.242	***	0.319	***
	IL10	0.23	***	0.331	***
M1 Macrophage	iNOS(NOS2)	-0.098	5.88E-02	-0.09	9.64E-02
	IRF5	0.325	***	0.332	***
	COX2(PTGS2)	0.034	5.14E-01	0.128	1.70E-02
M2 Macrophage	CD163	0.046	3.8E-01	0.132	1.43E-02
	VSIG4	0.098	5.88E-02	0.189	**
	MS4A4A	0.089	8.69E-02	0.199	**
Neutrophils	CD66b(CEACAM8)	0.092	7.75E-02	0.118	2.84E-02
	CD11b(ITGAM)	0.317	***	0.403	***
	CCR7	0.035	4.99E-01	0.144	*
Natural killer cell	KIR2DL1	-0.058	2.62E-01	-0.082	1.26E-01
	KIR2DL3	0.139	*	0.173	*
	KIR2DL4	0.228	***	0.245	***
	KIR3DL1	-0.033	5.28E-01	-0.026	6.32E-01
	KIR3DL2	0.095	0.0662	0.129	0.0162
	KIR3DL3	0.062	2.31E-01	0.07	1.97E-01
	KIR2DS4	0.018	7.3E-01	0.012	8.26E-01
Dendritic cell	HLA-DPB1	0.196	**	0.297	***
	HLA-DQB1	0.193	**	0.281	***
	HLA-DRA	0.18	**	0.28	***
	HLA-DPA1	0.151	*	0.256	***
	BDCA-1(CD1C)	0.063	2.25E-01	0.137	1.09E-02
	BDCA-4(NRP1)	0.114	2.77E-02	0.13	1.59E-02
	CD11c (ITGAX)	0.318	***	0.433	***
Th1	T-bet (TBX21)	0.073	1.59E-01	0.162	*
	STAT4	0.227	***	0.28	***
	STAT1	0.287	***	0.32	***
	IFN- $\gamma$ (IFNA1)	0.056	2.84E-01	0.062	2.54E-01
	TNF- $\alpha$	0.265	***	0.378	***
Th2	GATA3	0.203	***	0.316	***
	STAT6	-0.026	6.2E-01	-0.032	5.58E-01
	STAT5A	0.26	***	0.299	***
	IL13	0.101	5.2E-02	0.109	4.24E-02
Tfh	BCL6	0.075	1.5E-01	0.086	1.10E-01

**Table 1** (continued)

Description	Gene markers	HCC			
		None		Purity	
		partial cor	<i>p</i> value	partial cor	<i>p</i> value
Th17	IL21	0.136	*	0.166	*
	STAT3	0.166	*	0.056	3.01E-01
	IL17A	0.043	4.11E-01	0.066	2.24E-01
Treg	FOXP3	0.097	6.12E-02	0.174	*
	CCR8	0.31	***	0.39	***
	STAT5B	0.069	1.83E-01	0.06	2.65E-01
Exhausted T cells	TGFβ(TGFB1)	0.27	***	0.354	***
	PD-1(PDCD-1)	0.37	***	0.461	***
	CTLA4	0.396	***	0.494	***
	LAG3	0.372	***	0.406	***
	TIM3(HAVCR2)	0.352	***	0.493	***
	GZMB	0.121	1.96E-02	0.182	**

Abbreviation: HCC: hepatocellular carcinoma; TAM: tumor-associated macrophage; Th1, T-helper 1 cells; Th2, T-helper 2 cells; Th17, T-helper 17 cells; Th: Follicular helper T cell; Treg, regulatory T cell. Note: Partial cor (partial correlation coefficient) represents the correlation coefficient between the CDC20 expression and gene markers of infiltrating immune cells; Purity represents the correlation adjusted by purity; None represents the correlation without adjustment; \*  $p < 0.01$ ; \*\*  $p < 0.001$ ; \*\*\*  $p < 0.0001$

metastasis, which is the main reason for a poor prognosis [45, 46]. Furthermore, the NOTCH and T-cell receptor signalling pathways are involved in some cellular elements of the tumor microenvironment [47]. Therefore, the possible associations between CDC20 and certain malignant phenotypes, including metastasis and immune infiltration, should be explored and verified.

All the previous studies explored only the prognostic value and oncogenic function of CDC20 in cancers. However, the possible association between CDC20 and immune cell infiltration in the tumor environment has not been explored. In the present study, we analysed the correlation between CDC20 and immune cell infiltration in HCC and illustrated a possible relationship between CDC20 and the immune microenvironment of HCC.

At the beginning of tumor metastasis, tumor cells escape from the anti-tumor immune response and adapt to the microenvironment of the next site of metastasis [48]. Many immune cells in the immune microenvironment play crucial roles in the process of tumor metastasis. For example, TAMs and neutrophils promote tumor proliferation and metastasis [49]. Targeting TAMs may be a potential treatment strategy for HCC [50]. In our study, we surveyed the possible correlations between CDC20 expression and immune cell infiltration in HCC. The results suggested significant connections between CDC20 and the infiltration of several immune cell types, including B cells, CD4 + T cells, CD8 + T cells, neutrophils, macrophages, and DCs. Additionally, the correlations between CDC20

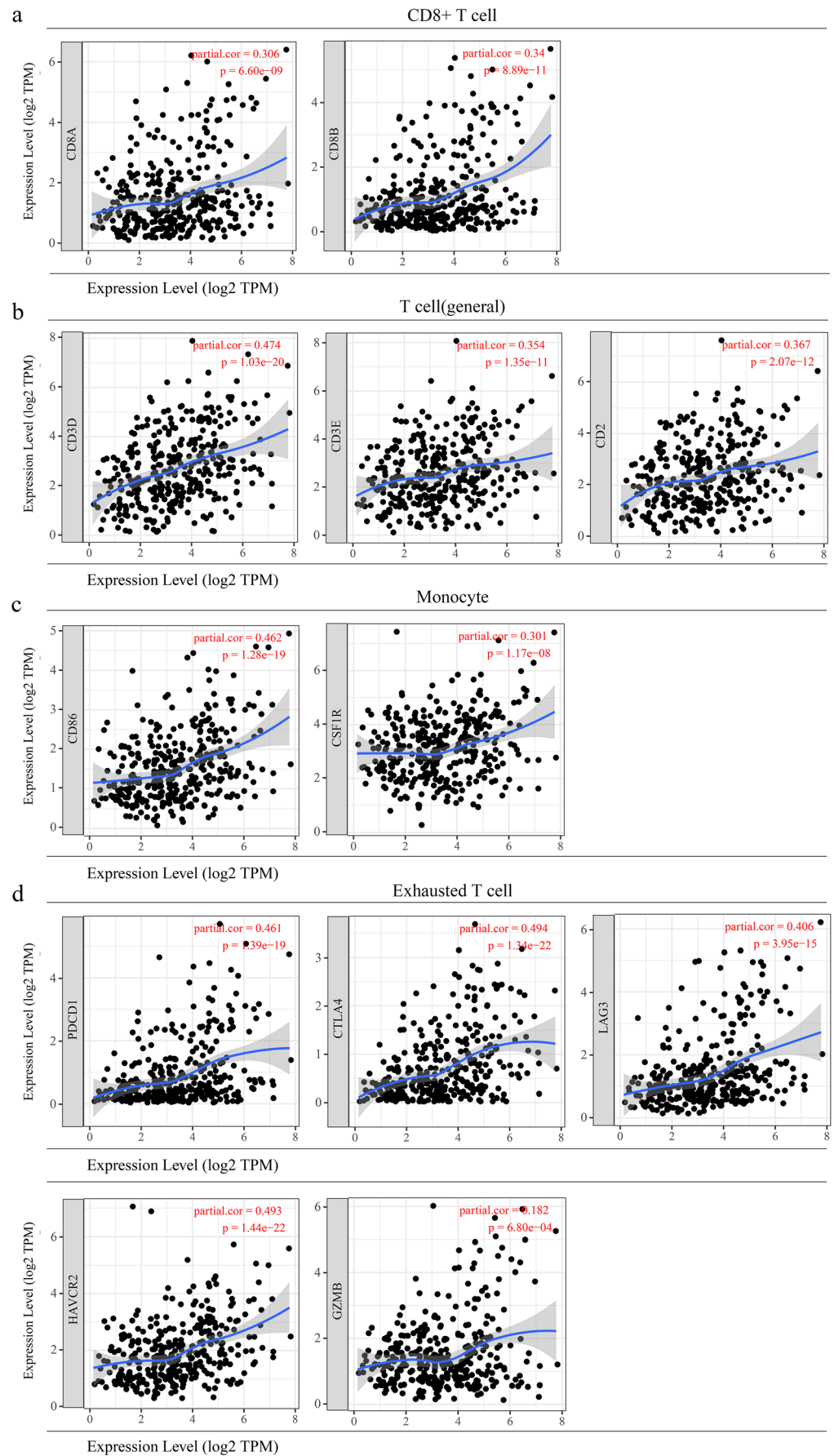
and relative gene biomarkers of 4 types of immune cells were verified using TIMER and GEPIA. These gene markers include several special genes involved in immunotherapy, such as PDCD1 and CTLA4 [51]. Correlation analysis indicated that the CDC20 expression level influences the effect of immunotherapy, implying that CDC20 is a potential therapeutic target correlated with tumor immunology.

## Conclusions

In summary, a high CDC20 expression level in HCC indicates a poor prognosis. Additionally, a high CDC20 expression is markedly correlated with immune infiltration. The correlations between CDC20 and gene biomarkers of several immune cell types indicate a potential role for CDC20 in the immunology of HCC. Further experiments are needed to explore the potential biological mechanisms of CDC20 involved in the metastasis and immune infiltration of HCC. CDC20 may be an innovative prognostic biomarker and potential therapeutic target in HCC.

**Abbreviations** HCC, hepatocellular carcinoma; CDC20, cell division cycle 20; IUUCD, Integrated annotations for Ubiquitin and Ubiquitin-like Conjugation Database; ICGC, International Cancer Genome Consortium; TCGA, The Cancer Genome Atlas; GEO, Gene Expression Omnibus; HPA, Human Protein Atlas; DEGs, differentially expressed genes; E3 genes, E3 ubiquitin-protein ligase genes; K-M,

**Fig. 8** Analysis of the associations between CDC20 and the gene biomarkers of tumor-infiltrating immune cells in HCC using TIMER. **a** Scatter plots of the associations between CDC20 and the gene biomarkers of CD8 + T cells (CD8A and CD8B). **b** Scatter plots of the associations between CDC20 and the gene biomarkers of T cells (general) (CDC3D, CDC3E, and CD2). **c** Scatter plots of the associations between CDC20 and the gene biomarkers of monocytes (CD86 and CSF1R). **d** Scatter plots of the associations between CDC20 and the gene biomarkers of exhausted T cells (PD-1, CTLA4, LAG3, TIM-3, and GZMB)



**Table 2** Correlation analysis between CDC20 and relative gene biomarkers of immune cells in GEPIA

Description	Gene markers	HCC			
		Tumor		Normal	
		R	<i>p</i> value	R	<i>p</i> value
CD8+T cell	CD8A	0.18	0.00041	0.32	0.024
	CD8B	0.24	3.6E-06	0.26	0.064
T cell (general)	CD3D	0.4	3.1E-15	0.34	0.017
	CD3E	0.19	0.00022	0.33	0.02
	CD2	0.23	8.4E-06	0.32	0.023
Monocyte	CD86	0.27	1.4E-07	0.14	0.35
	CD115(CSF1R)	0.11	0.029	0.18	0.21
Exhausted T cell	PD-1(PDCD1)	0.35	3.1E-12	0.37	0.0081
	CTLA4	0.39	8.8E-15	0.27	0.057
	LAG3	0.36	1.1E-12	0.15	0.29
	TIM-3(HAVCR2)	0.3	2.6E-09	0.04	0.78
	GZMB	0.12	0.025	0.33	0.021

Kaplan-Meier; ROC, receiver operating characteristic; AUC, the area under the ROC curve; GSEA, gene set enrichment analysis; PPI, protein-protein interaction; TIMER, Tumor Immune Estimation Resource; TILs, tumor-infiltrating immune cells; TAMs, tumor-associated macrophages; Th1, T-helper 1 cells; Th2, T-helper 2 cells; Th17, T-helper 17 cells; Tfh, follicular helper T cells

**Acknowledgements** The authors would like to thank Dingwen Wang (University of Waikato, Hamilton, New Zealand) and Yahuan Xie (Jiangxi Qiande Culture Communication Co, Ltd, Nanchang, China) for helping to acquire the data from the databases in this research. Additionally, Chen Xiong would like to thank his parents for their encouragement and support during the last twenty years.

**Author contributions** CX, ZW and GW contributed to the conception and design of the study. CX collected the data and wrote the manuscript. ZW and GW performed the data analysis and prepared the figures and tables. CX and ZW discussed the results of this study. CX, CZ, SJ, GJ, and DB reviewed and altered the manuscript of the study. Additionally, DB was responsible for the organization, revision and submission of this manuscript. All the authors read and approved the final manuscript.

**Funding** This work was supported by the National Natural Science Foundation of China [Grant No. 81871909], “13th Five-Year Plan” Science and Education Strong Health Project leading personnel of Yangzhou [Grant No. LJRC20181], and Provincial-level discipline leader of the NJPH [Grant No. DTRC201809].

**Data availability** The datasets were downloaded from The Cancer Genome Atlas (TCGA) database (<https://portal.gdc.cancer.gov/>), International Cancer Genome Consortium (ICGC) database (<https://dcc.icgc.org/projects/LIRI-JP>), Gene Expression Omnibus (GEO) database (<https://www.ncbi.nlm.nih.gov/geo>), and Integrated annotations for Ubiquitin and Ubiquitin-like Conjugation Database (IUUCD) database (<http://iuucd.biocuckoo.org/>).

**Code availability** Not applicable.

## Declarations

**Conflict of interest** All the authors declare that they have no competing interests.

**Ethics approval** Not applicable.

**Consent to participate** Not applicable.

**Consent for publication** All the authors consented to the publication of this research.

## References

- Villanueva A (2019) Hepatocellular carcinoma. *N Engl J Med* 380(15):1450–1462
- Llovet JM, Montal R, Sia D, Finn RS (2018) Molecular therapies and precision medicine for hepatocellular carcinoma. *Nat Rev Clin Oncol* 15(10):599–616
- Li R, Wang Y, Zhang X, Feng M, Ma J, Li J, Yang X, Fang F, Xia Q, Zhang Z et al (2019) Exosome-mediated secretion of LOXL4 promotes hepatocellular carcinoma cell invasion and metastasis. *Mol Cancer* 18(1):18
- Li W, Wang H, Ma Z, Zhang J, Ou-Yang W, Qi Y, Liu J (2019) Multi-omics analysis of microenvironment characteristics and immune escape mechanisms of hepatocellular carcinoma. *Front Oncol* 9:1019
- Wang D, Ma L, Wang B, Liu J, Wei W (2017) E3 ubiquitin ligases in cancer and implications for therapies. *Cancer Metastasis Rev* 36(4):683–702
- Liu J, Peng Y, Zhang J, Long J, Liu J, Wei W (2020) Targeting SCF E3 ligases for cancer therapies. *Adv Exp Med Biol* 1217:123–146
- Yang L, Chen J, Huang X, Zhang E, He J, Cai Z (2018) Novel Insights Into E3 ubiquitin ligase in cancer chemoresistance. *Am J Med Sci* 355(4):368–376
- Kurebayashi Y, Ojima H, Tsujikawa H, Kubota N, Maehara J, Abe Y, Kitago M, Shinoda M, Kitagawa Y, Sakamoto M (2018) Landscape of immune microenvironment in hepatocellular carcinoma and its additional impact on histological and molecular classification. *Hepatology* 68(3):1025–1041
- Palucka AK, Coussens LM (2016) The basis of oncoimmunology. *Cell* 164(6):1233–1247
- Gibney GT, Weiner LM, Atkins MB (2016) Predictive biomarkers for checkpoint inhibitor-based immunotherapy. *Lancet Oncol* 17(12):e542–e551
- Patel SP, Kurzrock R (2015) PD-L1 expression as a predictive biomarker in cancer immunotherapy. *Mol Cancer Ther* 14(4):847–856
- Zhou J, Xu Y, Lin S, Guo Y, Deng W, Zhang Y, Guo A, Xue Y (2018) iUUCD 2.0: an update with rich annotations for ubiquitin and ubiquitin-like conjugations. *Nucleic Acids Res* 46(D1):D447–Dd453
- Hudson TJ, Anderson W, Artz A, Barker AD, Bell C, Bernabé RR, Bhan MK, Calvo F, Eerola I, Gerhard DS et al (2010) International network of cancer genome projects. *Nature* 464(7291):993–998
- Tomczak K, Czerwińska P, Wiznerowicz M (2015) The Cancer Genome Atlas (TCGA): an immeasurable source of knowledge. *Contemp Oncol (Poznan Poland)* 19(1a):A68–A77
- Barrett T, Wilhite SE, Ledoux P, Evangelista C, Kim IF, Tomashevsky M, Marshall KA, Phillippy KH, Sherman PM,

- Holko M et al (2013) NCBI GEO: archive for functional genomics data sets—update. *Nucleic Acids Res* 41(Database issue): D991–D995
16. Szklarczyk D, Morris JH, Cook H, Kuhn M, Wyder S, Simonovic M, Santos A, Doncheva NT, Roth A, Bork P et al (2017) The STRING database in 2017: quality-controlled protein-protein association networks, made broadly accessible. *Nucleic Acids Res* 45(D1):D362–Dd368
  17. Shannon P, Markiel A, Ozier O, Baliga NS, Wang JT, Ramage D, Amin N, Schwikowski B, Ideker T (2003) Cytoscape: a software environment for integrated models of biomolecular interaction networks. *Genome Res* 13(11):2498–2504
  18. Li T, Fan J, Wang B, Traugh N, Chen Q, Liu JS, Li B, Liu XS (2017) TIMER: A web server for comprehensive analysis of tumor-infiltrating immune cells. *Cancer Res* 77(21):e108–e110
  19. Yoshihara K, Shahmoradgoli M, Martínez E, Vegesna R, Kim H, Torres-Garcia W, Treviño V, Shen H, Laird PW, Levine DA et al (2013) Inferring tumor purity and stromal and immune cell admixture from expression data. *Nat Commun* 4:2612
  20. Aran D, Sirota M, Butte AJ (2015) Systematic pan-cancer analysis of tumor purity. *Nat Commun* 6:8971
  21. Danaher P, Warren S, Dennis L, D’Amico L, White A, Disis ML, Geller MA, Odunsi K, Beechem J, Fling SP (2017) Gene expression markers of tumor infiltrating leukocytes. *J Immunother Cancer* 5:18
  22. Chen B, Khodadoust MS, Liu CL, Newman AM, Alizadeh AA (2018) Profiling tumor infiltrating immune cells with CIBERSORT. *Methods Mol Biol* (Clifton NJ) 1711:243–259
  23. Siemers NO, Holloway JL, Chang H, Chasalow SD, Ross-MacDonald PB, Voliva CF, Szustakowski JD (2017) Genome-wide association analysis identifies genetic correlates of immune infiltrates in solid tumors. *PLoS One* 12(7):e0179726
  24. Sousa S, Määttä J (2016) The role of tumor-associated macrophages in bone metastasis. *J Bone Oncol* 5(3):135–138
  25. Tang Z, Li C, Kang B, Gao G, Li C, Zhang Z (2017) GEPIA: a web server for cancer and normal gene expression profiling and interactive analyses. *Nucleic Acids Res* 45(W1):W98–Ww102
  26. Pan JH, Zhou H, Cooper L, Huang JL, Zhu SB, Zhao XX, Ding H, Pan YL, Rong L (2019) LAYN is a prognostic biomarker and correlated with immune infiltrates in gastric and colon cancers. *Front Immunol* 10:6
  27. Soave DF, Miguel MP, Tomé FD, de Menezes LB, Nagib PR, Celes MR (2016) The fate of the tumor in the hands of microenvironment: role of TAMs and mTOR pathway. *Mediat Inflamm* 2016:8910520
  28. Kreileder M, Barrett I, Bendtsen C, Brennan D, Kolch W (2021) Signaling dynamics regulating crosstalks between T-Cell activation and immune checkpoints. *Trends Cell Biol* 31(3):224–235
  29. Zhu L, Qin C, Li T, Ma X, Qiu Y, Lin Y, Ma D, Qin Z, Sun C, Shen X et al (2020) The E3 ubiquitin ligase TRIM7 suppressed hepatocellular carcinoma progression by directly targeting Src protein. *Cell Death Differ* 27(6):1819–1831
  30. He H, Wu Z, Li S, Chen K, Wang D, Zou H, Chen H, Li Y, Liu Z, Qu C (2020) TRAF7 enhances ubiquitin-degradation of KLF4 to promote hepatocellular carcinoma progression. *Cancer Lett* 469: 380–389
  31. Shao G, Wang R, Sun A, Wei J, Peng K, Dai Q, Yang W, Lin Q (2018) The E3 ubiquitin ligase NEDD4 mediates cell migration signaling of EGFR in lung cancer cells. *Mol Cancer* 17(1):24
  32. Dong LQ, Peng LH, Ma LJ, Liu DB, Zhang S, Luo SZ, Rao JH, Zhu HW, Yang SX, Xi SJ et al (2020) Heterogeneous immunogenomic features and distinct escape mechanisms in multifocal hepatocellular carcinoma. *J Hepatol* 72(5):896–908
  33. Hu H, Sun SC (2016) Ubiquitin signaling in immune responses. *Cell Res* 26(4):457–483
  34. Zhou J, Kryczek I, Li S, Li X, Aguilar A, Wei S, Grove S, Vatan L, Yu J, Yan Y et al (2021) The ubiquitin ligase MDM2 sustains STAT5 stability to control T cell-mediated antitumor immunity. *Nat Immunol* 22(4):460–470
  35. Cheng S, Castillo V, Sliva D (2019) CDC20 associated with cancer metastasis and novel mushroom-derived CDC20 inhibitors with antimetastatic activity. *Int J Oncol* 54(6):2250–2256
  36. Alfarsi LH, Ansari RE, Craze ML, Toss MS, Masisi B, Ellis IO, Rakha EA, Green AR (2019) CDC20 expression in oestrogen receptor positive breast cancer predicts poor prognosis and lack of response to endocrine therapy. *Breast Cancer Res Treat* 178(3): 535–544
  37. Mao Y, Li K, Lu L, Si-Tu J, Lu M, Gao X (2016) Overexpression of Cdc20 in clinically localized prostate cancer Relation to high Gleason score and biochemical recurrence after laparoscopic radical prostatectomy. *Cancer Biomark* 16(3):351–358
  38. Choi JW, Kim Y, Lee JH, Kim YS (2013) High expression of spindle assembly checkpoint proteins CDC20 and MAD2 is associated with poor prognosis in urothelial bladder cancer. *Virchows Arch* 463(5):681–687
  39. Ding ZY, Wu HR, Zhang JM, Huang GR, Ji DD (2014) Expression characteristics of CDC20 in gastric cancer and its correlation with poor prognosis. *Int J Clin Exp Pathol* 7(2):722–727
  40. Li J, Wang Y, Wang X, Yang Q (2020) CDK1 and CDC20 overexpression in patients with colorectal cancer are associated with poor prognosis: evidence from integrated bioinformatics analysis. *World J Surg Oncol* 18(1):50
  41. Wang L, Yang C, Chu M, Wang ZW, Xue B (2021) Cdc20 induces the radioresistance of bladder cancer cells by targeting FoxO1 degradation. *Cancer Lett* 500:172–181
  42. Gao Y, Wen P, Chen B, Hu G, Wu L, Xu A, Zhao G (2020) Downregulation of CDC20 increases radiosensitivity through Mcl-1/p-Chk1-Mediated DNA damage and apoptosis in tumor cells. *Int J Mol Sci* 21(18):6692
  43. Shi M, Dai WQ, Jia RR, Zhang QH, Wei J, Wang YG, Xiang SH, Liu B, Xu L (2021) APC(CDC20)-mediated degradation of PHD3 stabilizes HIF-1 $\alpha$  and promotes tumorigenesis in hepatocellular carcinoma. *Cancer Lett* 496:144–155
  44. Li J, Gao JZ, Du JL, Huang ZX, Wei LX (2014) Increased CDC20 expression is associated with development and progression of hepatocellular carcinoma. *Int J Oncol* 45(4): 1547–1555
  45. Luo YD, Fang L, Yu HQ, Zhang J, Lin XT, Liu XY, Wu D, Li GX, Huang D, Zhang YJ et al (2021) p53 haploinsufficiency and increased mTOR signalling define a subset of aggressive hepatocellular carcinoma. *J Hepatol* 74(1):96–108
  46. Jin M, Wang J, Ji X, Cao H, Zhu J, Chen Y, Yang J, Zhao Z, Ren T, Xing J (2019) MCUR1 facilitates epithelial-mesenchymal transition and metastasis via the mitochondrial calcium dependent ROS/Nrf2/Notch pathway in hepatocellular carcinoma. *J Exp Clin Cancer Res* 38(1):136
  47. Ye YC, Zhao JL, Lu YT, Gao CC, Yang Y, Liang SQ, Lu YY, Wang L, Yue SQ, Dou KF et al (2019) NOTCH signaling via WNT regulates the proliferation of alternative, CCR2-independent tumor-associated macrophages in hepatocellular carcinoma. *Cancer Res* 79(16):4160–4172
  48. Kitamura T, Qian BZ, Pollard JW (2015) Immune cell promotion of metastasis. *Nat Rev Immunol* 15(2):73–86

49. Galdiero MR, Bonavita E, Barajon I, Garlanda C, Mantovani A, Jaillon S (2013) Tumor associated macrophages and neutrophils in cancer. *Immunobiology* 218(11):1402–1410
50. Li X, Yao W, Yuan Y, Chen P, Li B, Li J, Chu R, Song H, Xie D, Jiang X et al (2017) Targeting of tumor-infiltrating macrophages via CCL2/CCR2 signalling as a therapeutic strategy against hepatocellular carcinoma. *Gut* 66(1):157–167
51. Zongyi Y, Xiaowu L (2020) Immunotherapy for hepatocellular carcinoma. *Cancer Lett* 470:8–17

**Publisher's note** Springer Nature remains neutral with regard to jurisdictional claims in published maps and institutional affiliations.