

## Effect of Portal Hypertension in the Small Bowel: An Endoscopic Approach

Pedro Figueiredo · Nuno Almeida · Clotilde Lérias · Sandra Lopes ·  
Hermano Gouveia · Maximino C. Leitão · Diniz Freitas

Received: 29 June 2007 / Accepted: 27 October 2007 / Published online: 17 November 2007  
© Springer Science+Business Media, LLC 2007

**Abstract** *Background and aim* The effects of portal hypertension in the small bowel are largely unknown. The aim of the study was to prospectively assess portal hypertension manifestations in the small bowel. *Methods* We compared, by performing enteroscopy with capsule endoscopy, the endoscopic findings of 36 patients with portal hypertension, 25 cirrhotic and 11 non-cirrhotic, with 30 controls. *Results* Varices, defined as distended, tortuous, or saccular veins, and areas of mucosa with a reticulate pattern were significantly more frequent in patients with PTH. These two findings were detected in 26 of the 66 patients (39%), 25 from the group with PTH (69%) and one from the control group (3%) ( $P < 0.0001$ ). Among the 25 patients with PTH exhibiting these patterns, 17 were cirrhotic and 8 were non-cirrhotic ( $P = 0.551$ ). The presence of these endoscopic changes was not related to age, gender, presence of cirrhosis, esophageal or gastric varices, portal hypertensive gastropathy, portal hypertensive colopathy, prior esophageal endoscopic treatment, current administration of beta-blockers, or Child–Pugh Class C. More patients with these endoscopic patterns had a previous history of acute digestive bleeding (72% vs. 36%) ( $P = 0.05$ ). Active bleeding was found in two patients (5.5%). *Conclusions* The presence of varices or areas of mucosa with a reticulate pattern are manifestations of portal hypertension in the small bowel, found in both cirrhotic and non-cirrhotic patients. The clinical implications of these findings, as regards digestive bleeding, are

uncertain, although we documented acute bleeding from the small bowel in two patients (5.5%).

**Keywords** Capsule endoscopy · Portal hypertension · Small bowel

### Introduction

One consequence of portal hypertension (PTH) is bleeding, particularly from esophageal varices [1]. However, other sources of digestive bleeding have been identified, including gastric [2] and colorectal mucosa [3, 4].

Portal hypertensive gastropathy (PHG) is a well-established cause of bleeding in cirrhotic patients, present in up to 98% of patients with PTH [5] and accounting for 25.8% of acute bleeding episodes in a cohort of 315 followed over a mean period of 18 months [2]. Changes in the gastric mucosa of patients with PTH were first described by McCormack et al. [6], but the mechanisms implicated in the pathogenesis of PHG are not yet fully understood. Portal hypertension, and not cirrhosis, is the main factor, because PHG has been described in patients with and without liver disease [7]. There is, however, no good correlation between the endoscopic findings and portal pressure [8], and gastric blood flow studies showed both increased and reduced gastric perfusion [9, 10].

Similarly, endoscopic abnormalities in the large bowel of patients with cirrhosis have also been described [3, 4, 11–14]. The spectrum of lesions categorized as portal hypertensive colopathy (PHC) includes findings resembling colitis (edema, diffuse hyperemia, friability, granularity, and/or spontaneous bleeding) and vascular lesions (cherry red spots, telangiectasias, or angiodysplasia-like lesions) [11], although colonic and ano-rectal

P. Figueiredo (✉) · N. Almeida · C. Lérias · S. Lopes ·  
H. Gouveia · M. C. Leitão · D. Freitas  
Department of Gastroenterology, Hospitais da Universidade de  
Coimbra, Av. Bissaya Barreto, Coimbra 3000-075, Portugal  
e-mail: pedro.n.figueiredo@clix.pt

varices can also be found in up to 31 and 38%, respectively, of cirrhotic patients [3, 4]. As in PHG, these lesions are not solely detected in the presence of cirrhosis, but can also be found in cases of extra-hepatic portal vein obstruction [4, 12]. Portal hypertensive colopathy seems to be a rare cause of bleeding [3, 4].

The recognized existence of PHG and PHC suggests that the small bowel might also show endoscopic changes related to PTH. In fact, in 1989, Thiruvengadam and Gostout reported three patients, presenting with blood loss, who had diffuse erythema and scattered petechia in the stomach, but also in the duodenum and jejunum [15]. The small bowel, previously considered to be the most difficult segment of the gut to study, is nowadays easily explored with the advent of new endoscopic methods, for example capsule endoscopy (CE) and double-balloon enteroscopy [16, 17]. The aim of this study was to assess PTH manifestations in the small bowel of cirrhotic and non-cirrhotic patients by performing enteroscopy with CE.

## Patients and methods

The cohort consisted of patients with PTH, documented by endoscopic evidence of esophageal or gastric varices, and included both cirrhotic and non-cirrhotic cases (the presence of cirrhosis was confirmed by histology, or by compatible physical, laboratory, and ultrasound studies). The control group included patients submitted to CE, previously assessed by upper endoscopy, colonoscopy, abdominal ultrasound, liver biochemistry, and prothrombin time, that showed no evidence of PTH. Age less than 18 years, pregnancy, a prior history of bowel obstruction, major abdominal surgery, or any mental condition precluding compliance with the study were considered exclusion criteria.

Cirrhosis severity was graded according to the Child–Pugh score [18] and esophageal varices using criteria proposed by Conn [19]. Portal hypertensive gastropathy, if present, was classified after McCormack et al. [6]. Portal hypertensive colopathy was defined by the presence of diffuse hyperemia and edema resembling chronic colitis, spontaneous bleeding, cherry red spots, angiodysplasia-like lesions, telangiectasias, and varices.

Informed consent was obtained from all patients. Data collected on each patient included age, sex, etiology of liver disease, Child–Pugh class, history of previous acute digestive bleeding, findings of upper digestive endoscopy and colonoscopy, endoscopic sclerotherapy or band ligation for eradication of esophageal varices, and treatment with beta-blockers.

A PillCam SB (Given Imaging, Yoqneam, Israel) was used. The patients fasted for 12 h before the examination

and drank a solution that contained simethicone immediately before swallowing the capsule. All the patients were advised to drink after 4 h and, after 8 h, the sensor array and the recording device were removed. The digital video image streams of the examinations were downloaded to the RAPID system.

Statistical comparisons were made using the chi-squared test, with the Yates correction when needed, the Fisher exact test, and the Student *t*-test. A *P*-value of less than 0.05 was considered statistically significant. Statistical analysis was performed with statistical software (SPSS version 11,5, SPSS, Chicago, Illinois, USA).

## Results

Between November 2002 and February 2006, 66 patients, 36 with PTH and 30 controls, were enrolled on the study.

The most common etiology of PTH was alcoholic cirrhosis and, in non-cirrhotic patients, portal vein thrombosis (Table 1). Among the eleven patients without cirrhosis, nine had been previously submitted to hepatic biopsy that confirmed the absence of changes in the hepatic parenchyma. The mean age was  $56 \pm 12$  years (range 33–81), and the dominant gender was male (83%). All the patients presented esophageal or gastric varices. Twenty-two (61%) had a previous history of acute digestive bleeding, and 21 (58%) received sclerotherapy or band ligation. Twelve patients (33%) were on therapy with beta-blockers. Portal hypertensive gastropathy was present in 27 (75%) of the patients. Among the 22 patients submitted to colonoscopy, PHC was diagnosed in six (27%). A Child–Pugh score was attributed to all cirrhotic patients; Class B was the most common, found in 16 (64%) patients, followed by Class C, detected in six (24%) patients then class A detected in three (12%). The demographic, clinical, and endoscopic characteristics of cirrhotic and non-cirrhotic patients with PTH are presented in Table 2.

**Table 1** Portal hypertension etiology

Portal hypertension etiology	Number (%)
Cirrhotic	25(69.4)
Alcohol	23(63.8)
Virus	1(2.8)
Primary biliary cirrhosis	1(2.8)
Non-cirrhotic	11(30.6)
Portal vein thrombosis	8(22.2)
Budd–Chiari syndrome	1(2.8)
Unknown	2(5.6)
Total	36(100)

**Table 2** Demographic, clinical, and endoscopic findings of patients with PTH

	Cirrhotic patients ( <i>N</i> = 25)	Non-cirrhotic patients ( <i>N</i> = 11)	<i>P</i>
Mean age (years)	59 ± 10	49 ± 15	0.02
Gender (male/female) (%)	88/12	73/27	0.25
Previous acute digestive bleeding, <i>n</i> (%)	14(56)	8(73)	0.28
Prior esophageal sclerotherapy/ligation, <i>n</i> (%)	13(52)	8(73)	0.21
Prior beta-adrenergic blockers, <i>n</i> (%)	8(32)	4(36)	0.54
Esophageal varices, <i>n</i> (%)	23(92)	8(73)	0.15
Gastric varices, <i>n</i> (%)	2(8)	3(27)	0.15
Portal hypertensive gastropathy, <i>n</i> (%)	22(88)	5(46)	0.01
Portal hypertensive colopathy <sup>a</sup> , <i>n</i> (%)	4/17(24)	2/5(40)	0.58

<sup>a</sup> Only 22 patients with PTH were submitted to colonoscopy

The control group consisted of thirty patients, age and gender-matched, consecutively admitted to our outpatient clinic to undergo CE due to obscure gastrointestinal bleeding (*n* = 21), suspected inflammatory bowel disease (*n* = 7), and abdominal pain (*n* = 2).

The colon was reached during the recording time in 55 patients (83.3%) and the ileum in the remaining 11 patients. No technical problems or complications occurred during the examinations, and the capsule was naturally excreted by all patients.

The endoscopic findings in patients with PTH and in the control group are shown in Table 3. Varices, defined as distended, tortuous, or saccular veins (Fig. 1), and areas of mucosa with a reticulate pattern (Fig. 2) were significantly more frequent in patients with PTH. These two findings were detected in 26 of the 66 patients (39%), 25 from the group with PTH (69%) and one from the control group (3%) (*P* < 0.0001) (Table 4). Among the 25 patients with PTH exhibiting these patterns, seventeen were cirrhotic and eight were non-cirrhotic (*P* = 0.551) (Table 4). Two cirrhotic patients presented both patterns, while 15 presented only enteropathy. In the non-cirrhotic group, five presented the two patterns and three exhibited only varices. No

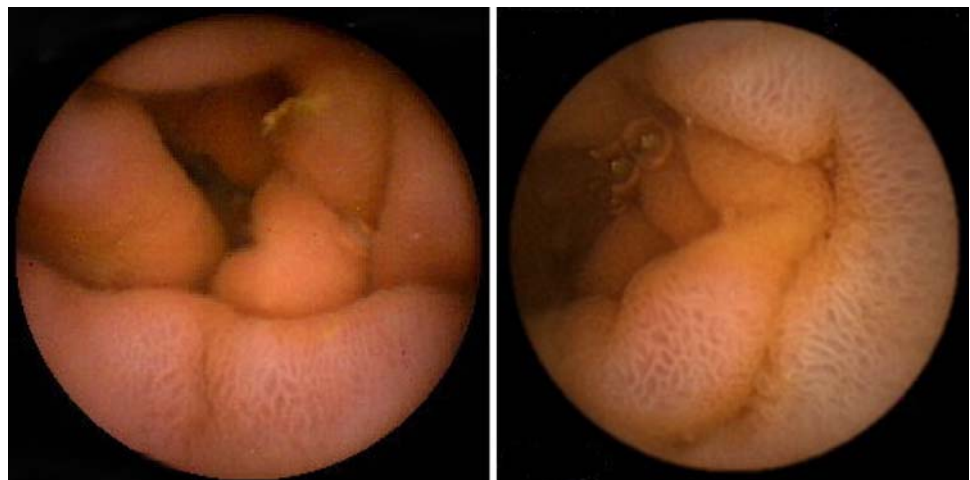
**Table 3** Endoscopic findings in the small bowel

	Patients with PTH, <i>N</i> (%)	Control group, <i>N</i> (%)	<i>P</i>
Varices	10(27.8)	1(3.3)	0.008
Reticulate pattern of the mucosa	22(61.1)	1(3.3)	<0.0001
Angiodysplasia	10(27.8)	12(49)	0.216
Ulcerations or erosions	8(22.2)	7(23.3)	0.572

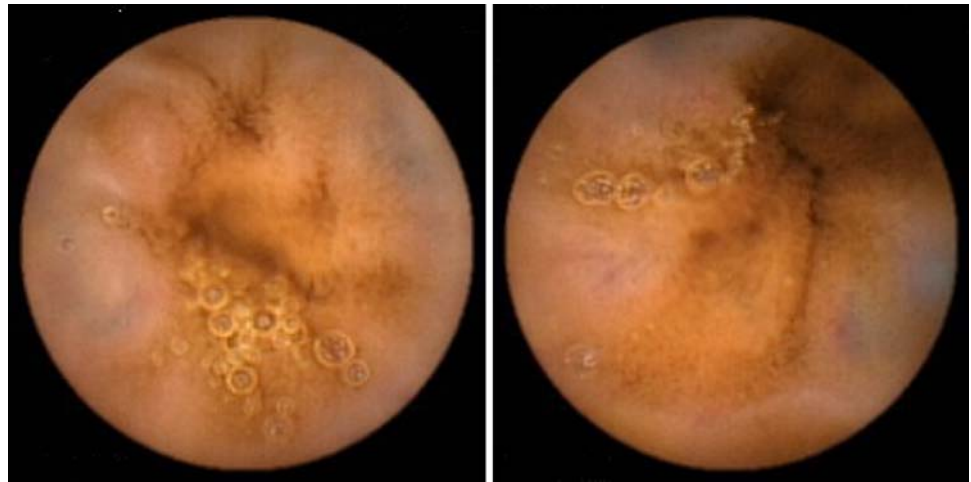
statistically significant association was found between the two endoscopic patterns considered.

Active bleeding was detected in two patients (5.5%) and one of these was submitted to double-balloon enteroscopy. The procedure confirmed the presence of areas of congestive mucosa with a reticulate pattern (Fig. 3), but the site of bleeding was one small angiodysplasia located in the jejunum, successfully treated with argon-plasma.

Grouping patients with PTH according to the presence of these two endoscopic patterns in the small bowel (Table 5) showed there were no statistically significant differences with regard to age, gender, presence of cirrhosis, esophageal or gastric varices, PHG, PHC, prior

**Fig. 1** Areas of mucosa with a reticulate pattern

**Fig. 2** Small-bowel varices



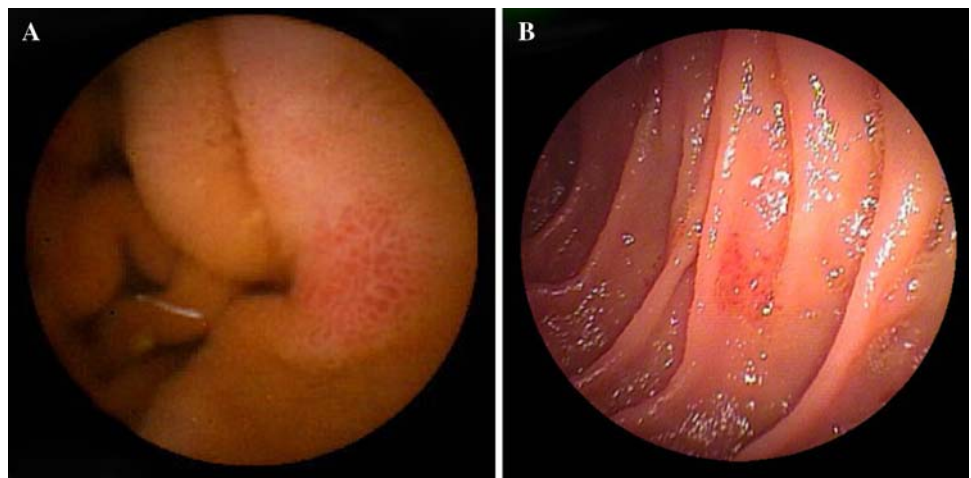
**Table 4** Number of patients showing varices or a reticulate pattern of the mucosa

	Patients (N)	Varices/reticulate pattern, N (%)
Cirrhotic PTH	25	17(68)
Non-cirrhotic PTH	11	8(73)
Controls	30	1(3)
Total	66	26(39)

esophageal endoscopic treatment, current administration of beta-blockers, or Child–Pugh Class C. More patients from the group with PTH manifestations in the small bowel had a previous history of acute digestive bleeding (72% vs. 36%) ( $P = 0.05$ ). The difference did not acquire statistical significance when the two endoscopic patterns were considered separately.

Other lesions found in patients with PTH included small polyps and parasites in two, one case of inflammatory stricture, and one of submucosal tumor. In the control group, one case of villous atrophy and one case of a submucosal tumor were also detected.

**Fig. 3** Areas of congestive mucosa with a reticulate pattern: (a) capsule endoscopy; (b) double-balloon enteroscopy



**Discussion**

The consequences of PTH in the digestive tract are easily studied in the segments that are accessible to flexible endoscopy. In fact, McCormack et al. [6], in 1985, were the first to describe the entity called congestive gastropathy, but similar changes were later reported to occur also in the duodenum [15, 20, 21] and large bowel [3, 4, 11–14].

Congestive gastroenteropathy has been reported to be a non-variceal cause of bleeding in patients with PTH [15, 20], but most of the studies on portal hypertensive enteropathy (PHE) found in the literature were obtained by upper endoscopy [15, 20], by push enteroscopy [22], or by retrograde ileoscopy at colonoscopy [23, 24], and only include the duodenum, proximal jejunum, and terminal ileum.

Because of its distance from the mouth and anus, the small bowel has, for many years, been considered the most difficult segment of the gut to study with flexible endoscopy. With the advent of CE [16], it is now possible to examine the entire small intestine without discomfort to the patient and on an



**Table 5** Comparison of the patients with PTH according to the presence of varices or a reticulate pattern of the mucosa in the small bowel

	Findings present ( <i>N</i> = 25)	Findings absent ( <i>N</i> = 11)	<i>P</i>
Mean age (years)	57 ± 13	53 ± 11	0.42
Male gender (%)	80	91	0.39
Cirrhosis, <i>n</i> (%)	17(68)	8(73)	0.55
Oesophageal varices, <i>n</i> (%)	22(88)	9(82)	0.49
Gastric varices, <i>n</i> (%)	2(8)	3(27)	0.15
Portal hypertensive gastropathy, <i>n</i> (%)	18(72)	9(82)	0.42
Portal hypertensive colopathy, <i>n</i> (%)	4/17(24)	2/5(40)	0.46
Previous acute digestive bleeding, <i>n</i> (%)	18(72)	4(36)	0.05
Prior esophageal sclerotherapy/ligation, <i>n</i> (%)	17(68)	4(36)	0.08
Prior beta-adrenergic blockers, <i>n</i> (%)	8(32)	4(36)	0.54
Child–Pugh class C, <i>n</i> (%)	5(20)	1(9)	0.34

ambulatory basis [25]. This method does not, however, permit biopsies and treatment, a limitation that has been overcome by double-balloon enteroscopy [26].

De Palma et al. reported the changes found in the mucosa of the small bowel in patients with PTH [27]. They studied 37 cirrhotic patients and 34 controls with CE, and considered the presence of mucosa inflammatory-like abnormalities and/or vascular lesions as manifestations of PHE. These findings were detected in 67.5% of the cirrhotic patients and in none of the controls.

Our results show that the presence of varices and of areas of mucosa with a reticulate pattern should be considered manifestations of PTH in the small bowel. The prevalence of these findings among patients with PTH is, in our study, similar to that reported by De Palma et al. In fact, 17 cirrhotic patients (68%) exhibited patterns that were suggestive of PTH manifestations in the small bowel, compared with only one patient in the control group (68% vs. 3%,  $P < 0.0001$ ).

Eight of the eleven non-cirrhotic patients (73%) showed PTH manifestations in the small bowel, not significantly different from findings in the cirrhotic group (68%). The finding of small-bowel manifestations of PTH in non-cirrhotic patients is in accordance with reports in the literature about PHG and PHC. Indeed, although the prevalence is a matter of debate, with a large series from India reporting a figure as high as 62% [28], the presence of PHG is well documented in non-cirrhotic patients with PTH [29]. The absence of a linear relationship between the severity of liver disease and the prevalence of the PHG, as stated by Primignani et al. [2], reinforces the conviction that the presence of cirrhosis is not a sine qua non condition for the occurrence of PHG. The presence of PHC in the absence of cirrhosis is also recognized, observed, as stated by Ganguly et al., in a similar frequency in cirrhotic and non-cirrhotic patients [12].

When comparing patients with and without PTH manifestations in the small bowel, the only variable that is on

the edge of statistical significance is previous acute digestive bleeding ( $P = 0.05$ ). So, although the significance of this finding is uncertain, active bleeding from the small bowel was documented in two patients (5.5%). This figure is not substantially different from that reported for PHG and PHC [2, 3].

Another important issue is whether angiodysplastic-like lesions, detected by CE, should be considered a small bowel manifestation of PTH. Although angiodysplasia seems to be the main etiology of acute bleeding from the small bowel in patients with PTH, documented in all cases in the series presented by De Palma et al. [27] and in one of the two cases in our series, the frequency of detection of these lesions was, in our study, similar in patients with PTH and in the control group. Therefore, angiodysplastic-like lesions should not, in our opinion, be considered a small bowel manifestation of PTH. Future studies, aiming the recognition of the clinical impact of small-bowel endoscopic findings in these patients (as regards bleeding episodes or transfusion requirements, for example), must separately consider those who present angiodysplastic-like lesions.

Two diagnostic options exist when dealing with small bowel manifestations of PTH. The first is to perform enteroscopy only in patients who present obscure digestive bleeding. This was the method adopted by De Palma et al., who found active bleeding in four patients (10.8%), the source being angiodysplastic-like lesions [27]. The other diagnostic option is to include enteroscopy in the work-up of all cirrhotic patients, irrespective of the presence of hemorrhage. In our series, the patients were not selected according to the presence of previous bleeding, but only according to the existence of documented PTH, and we found that two patients (5.5%) presented active bleeding. Not surprisingly, in view of the selection criteria, fewer patients were actively bleeding in our series. Given these results, we agree with Jimenez-Saenz et al. [30] that enteroscopy should be reserved for

patients who present obscure digestive bleeding. Capsule enteroscopy should be the preferred method firstly because, by allowing complete examination of the small bowel, it is obviously more efficient in detecting small bowel manifestations of PTH than other diagnostic modalities, for example retrograde ileoscopy [23, 24], and, second, accurate diagnosis may enable therapeutic intervention with double-balloon enteroscopy, as occurred in our patient.

The relationship between previous esophageal endoscopic treatment and the existence of PHG and PHC is discussed in the literature. Sarin et al. found that among 88 patients with PHG, 74% developed this condition after variceal eradication [29]. The severity of the PHG also seems to increase after endoscopic variceal treatment, either by sclerotherapy or by band ligation [31]. On the other hand, it seems that esophageal variceal band ligation does not affect the incidence of anorectal varices or PHC [32]. As regards PHE, the results of De Palma et al. indicate an absence of association between previous endoscopic variceal therapy and the presence of PHE [27]. In our series, although patients submitted to prior esophageal endoscopic treatment exhibited small-bowel manifestations of PTH more frequently, the result was not statistically significant ( $P = 0.08$ ).

The concept of portal hypertensive intestinal vasculopathy, which includes PHG, PHE, and PHC, was selected by Viggiano and Gostout to describe the effects of PTH in the gut [33]. The association between PHG and PHC is well documented by Bini et al. for a large series of cirrhotic patients [11]. Two studies concerning PHE address this issue: one, published as a full paper by De Palma et al., found that PHE is significantly more common in the presence PHG and PHC [27], while the other, a study presented recently as an abstract by Repici et al., found no association between PHE, documented by CE, and the presence of PHG and PHC [34]. Our results do not show that PHG and PHC are more frequently found in patients with small-bowel manifestations of PTH.

In summary, these data provide evidence that the presence of varices and areas of mucosa with a reticulate pattern should be considered manifestations of PTH in the small bowel, and that these endoscopic findings are not exclusively found in cirrhotic patients but can also be detected in non-cirrhotic patients with PTH. The clinical implications of these findings, as regards digestive bleeding, are uncertain, although we documented acute bleeding from the small bowel in two patients (5.5%). The putative existence of a portal hypertensive intestinal vasculopathy, which includes portal hypertensive gastropathy, enteropathy, and colopathy, is not suggested by our results.

## References

- Garcia-Tsao G (2002) Portal hypertension. *Curr Opin Gastroenterol* 18:351–359
- Primignani M, Carpinelli L, Preatoni P et al (2000) Natural history of portal hypertensive gastropathy in patients with liver cirrhosis. The New Italian Endoscopic Club for the study and treatment of esophageal varices (NIEC). *Gastroenterology* 119:181–187
- Bresci G, Parisi G, Capria A (2006) Clinical relevance of colonic lesions in cirrhotic patients with portal hypertension. *Endoscopy* 38:830–835
- Misra SP, Dwivedi M, Misra V et al (2005) Colonic changes in patients with cirrhosis and in patients with extrahepatic portal vein obstruction. *Endoscopy* 37:454–459
- Burak KW, Beck PL (2003) Diagnosis of portal hypertensive gastropathy. *Curr Opin Gastroenterol* 19:477–482
- McCormack TT, Sims J, Eyre-Brook I, Kennedy H, Goepel J, Johnson AG, Triger DR (1985) Gastric lesions in portal hypertension: inflammatory gastritis or congestive gastropathy? *Gut* 26:1226–1232
- Bayraktar Y, Balkanci F, Uzunalimoglu B et al (1996) Is portal hypertension due to liver cirrhosis a major factor in the development of portal hypertensive gastropathy? *Am J Gastroenterol* 91:554–558
- Kamath PS, Lacerda M, Ahlquist DA et al (2000) Gastric mucosal responses to intrahepatic portosystemic shunting in patients with cirrhosis. *Gastroenterology* 118:905–911
- Gupta R, Sawant P, Parameshwar RV et al (1998) Gastric mucosal blood flow and hepatic perfusion index in patients with portal hypertensive gastropathy. *J Gastroenterol Hepatol* 13:921–926
- Panes J, Bordas JM, Pique JM et al (1992) Increased gastric mucosal perfusion in cirrhotic patients with portal hypertensive gastropathy. *Gastroenterology* 103:1875–1882
- Bini EJ, Lascarides CE, Micala PL et al (2000) Mucosal abnormalities of the colon in patients with portal hypertension: an endoscopic study. *Gastrointest Endosc* 52:511–516
- Ganguly S, Sarin SK, Bhatia V et al (1995) The prevalence and spectrum of colonic lesions in patients with cirrhotic and non-cirrhotic portal hypertension. *Hepatology* 21:1226–1231
- Kozarek RA, Botoman VA, Bredfeldt JE et al (1991) Portal colopathy: prospective study of colonoscopy in patients with portal hypertension. *Gastroenterology* 101:1192–1197
- Rabinovitz M, Schade RR, Dindzans VJ et al (1990) Colonic disease in cirrhosis. An endoscopic evaluation in 412 patients. *Gastroenterology* 99:195–199
- Thiruvengadam R, Gostout CJ (1989) Congestive gastroenteropathy—an extension of nonvariceal upper gastrointestinal bleeding in portal hypertension. *Gastrointest Endosc* 35:504–507
- Iddan G, Meron G, Glukhovskiy A et al (2000) Wireless capsule endoscopy. *Nature* 405:417
- Yamamoto H, Yano T, Kita H et al (2003) New system of double-balloon enteroscopy for diagnosis and treatment of small intestinal disorders. *Gastroenterology* 125:1556
- Pugh RN, Murray-Lyon IM, Dawson JL, Pietroni MC, Williams R (1973) Transection of the oesophagus for bleeding oesophageal varices. *Br J Surg* 60:646–649
- Conn HO (1967) Ammonia tolerance in the diagnosis of esophageal varices. A comparison of endoscopic, radiologic, and biochemical techniques. *J Lab Clin Med* 70:442–451
- Nagral AS, Joshi AS, Bhatia SJ, Abraham P, Mistry FP, Vora IM (1993) Congestive jejunopathy in portal hypertension. *Gut* 34:694–697
- Menchen L, Ripoll C, Marin-Jimenez I et al (2006) Prevalence of portal hypertensive duodenopathy in cirrhosis: clinical and haemodynamic features. *Eur J Gastroenterol Hepatol* 18:649–653

