



Probabilistic assessment of seismic-induced slope displacements: an application in Italy

Fabio Rollo¹ · Sebastiano Rampello¹

Received: 5 October 2020 / Accepted: 26 May 2021 / Published online: 5 June 2021
© The Author(s) 2021

Abstract

Earthquake-induced slope instability is one of the most important hazards related to ground shaking, causing damages to the environment and, often, casualties. Therefore, it is important to assess the seismic performance of slopes, especially in the near fault regions, evaluating the permanent displacements induced by seismic loading. This paper applies a probabilistic approach to evaluate the seismic performance of slopes using an updated database of ground motions recorded during the earthquakes occurred in Italy. The main advantage of this approach is that of accounting for the aleatory variability of both ground motions and prediction of seismic-induced displacements of slopes. The results are presented in terms of hazard curves, showing the annual rate of exceedance of permanent slope displacement evaluated using ground motion data provided by a standard probabilistic hazard analysis and a series of semi-empirical relationships linking the permanent displacements of slopes to one or more ground motion parameters. The procedure has been implemented on a regional scale to produce seismic landslide hazard maps for the Irpinia district, in Southern Italy, characterised by a severe seismic hazard. Seismic landslide hazard maps represent a useful tool for practitioners and government agencies for a regional planning to identify and monitor zones that are potentially susceptible to earthquake-induced slope instability, thus requiring further detailed, site-specific studies.

Keywords Slopes · Earthquake-induced displacements · Probabilistic analysis · Displacement hazard curves · Hazard maps

Notation

GM	Ground motion parameter
a_0, a_1, a_2, a_3	Coefficients of Eqs. (1) and (4)
d	Permanent sliding displacement
d_y	Threshold sliding displacement
I_A	Arias intensity

✉ Fabio Rollo
fabio.rollo@uniroma1.it

Sebastiano Rampello
sebastiano.rampello@uniroma1.it

¹ Dipartimento di Ingegneria Strutturale e Geotecnica, Università di Roma La Sapienza, via Eudossiana 18, 00184 Roma, Italy

k_y	Yield seismic coefficient
M	Magnitude
M_w	Moment magnitude
R_{ep}	Epicentral distance
PGA	Peak ground acceleration
PGV	Peak ground velocity
$S_a(1.5T_s)$	Spectral acceleration computed at the degraded period $1.5T_s$
T_m	Mean period
T_r	Return period
ε	Normalised residuals
λ	Mean rate of occurrence of PGA
λ_d	Displacement annual rate of exceedance
μ_{in}	Natural log of mean value
ρ	Correlation coefficient
σ_{in}	Natural log of standard deviation

1 Introduction

Earthquakes often produce instability in natural slopes, causing severe human and economic losses. Therefore, several efforts have been devoted in the past decades by the geotechnical community to study the seismic response of slopes aimed at mitigating and preventing such catastrophic events.

The inertial forces induced by seismic loading generate permanent displacements due to the temporary mobilisation of the shear strength during earthquake loading, with accumulation of plastic strains within the sliding surface. More times the shear strength is attained during a severe seismic event, the higher is the permanent sliding experienced at the end of the earthquake. Therefore, the seismic performance of a slope can be described by the permanent displacements developed at the end of the seismic event, which can be quantified through several methods. Stress-deformation modelling (e.g. finite element, discrete element, material point methods) provides the most accurate prediction of the seismic response of slopes as it takes into account some relevant characteristics of soil behaviour, such as the cyclic degradation of shear strength parameters (Bandini et al. 2015) and the development of excess pore-water pressures during earthquake (Di Filippo et al. 2019). However, effort and time involved in the analyses and the necessity of accurate site characterisation and geotechnical investigations reserve these methods to the study of critical projects. Furthermore, the analyses are site-specific and cannot be employed to evaluate slope stability at a regional scale. Conversely, the well-known displacement-based Newmark's method (Newmark 1965) is preferred in common practice as it represents a good compromise between simplicity and accuracy of the results. In the method, the slope is assimilated to a rigid block sliding on a horizontal plane that undergoes permanent displacements only when the acceleration of the input motion is greater than a critical value, the latter depending on slope resistance. Although the Newmark's method ignores the deformation of the sliding mass during seismic shaking, the hypothesis of rigid block is applicable for shallow slides and falls in rock and debris (Jibson 2011).

Many researchers have proposed predictive equations based on Newmark-type computations, using various ground motion databases. Indeed, the integration of a set of acceleration time histories permits to link the permanent displacements to the yield seismic

coefficient, representing the slope seismic resistance, and to a series of ground motion parameters (e.g. Del Gaudio et al. 2003; Bray and Travararou 2007; Jibson 2007; Saygili and Rathje 2008; Fotopoulou and Pitilakis 2015; Song et al. 2017; Tropeano et al. 2017; Bray and Macedo 2019; Cho and Rathje 2020). For instance, Chousianitis et al. (2014) adopted the Arias intensity as descriptor of ground motion as it better characterises the damaging effects induced by the earthquakes. Even Saygili & Rathje (2008) and Cho & Rathje (2020) demonstrate that for predictive equations based on a single ground motion parameter (scalar approach), the smallest standard deviation is obtained using the Arias intensity I_A as it encompasses the intensity, the frequency content and the duration of the ground motion. However, the performance of the semi-empirical relationships increases when more than one ground motion parameter are used in the equation (Bazzurro & Cornell 2002) as they can capture additional significant features of the ground motion that affect the slope displacement, typically related to the intensity and frequency content of the input motion. Furthermore, Bray et al. (2018) highlighted the importance of differentiating displacement models depending on the tectonic setting.

Gaudio et al. (2020) derived semi-empirical relationships for the Italian territory by performing a parametric integration of an updated version of the Italian seismic database, along the line tracked by Rampello et al. (2010) and Biondi et al. (2011). The database includes 954 records of 208 seismic events with moment magnitude $M_w \geq 4$, peak ground accelerations $PGA \geq 0.05$ g, epicentral distance $R_{ep} < 100$ km recorded by 297 stations located throughout the national territory referred to a temporal period ranging from 14/06/1972 to 24/04/2017, thus including the seismic records of the recent destructive earthquakes occurred in 2009 L'Aquila (Maugeri et al. 2011), 2012 Emilia (Mucciarelli and Liberatore 2014) and 2016 Central Italy seismic sequence (Mollaioli et al. 2019; Luzi et al. 2019). For each station, information about the subsoil class is available according to the classification provided by Eurocode 8, Part 1 (CEN 2003) and by the Italian Building Code (Ministero delle Infrastrutture 2018). Gaudio et al. (2020) also provide information on the tectonic setting of the seismic database: 581 events (61.3% of the total) are characterised by a normal focal mechanism (NF), while the registrations with reverse (TF), oblique reverse (U) and strike-slip (SS) fault mechanisms are 170 (18%), 126 (13.3%) and 65 (6.9%), respectively. Therefore, based on the number of records, the most relevant mechanism in this study is the normal fault. The parametric analyses were performed for different values of the yield seismic coefficient k_y using both one (scalar) and two (vector) ground motion parameter empirical models obtained adapting the ones recently proposed by Cho and Rathje (2020) to the Italian seismicity.

In this work, the semi-empirical relationships are further specialised distinguishing the subsoil classes of the recording stations: the registrations are 123 (13%) on rock-like (class A) subsoil, 469 (49.5%) on stiff (class B) subsoil and 294 (31%) on soft (class C) subsoil. Classes D and E are not taken into account in the following due to the small number of records available: 14 (1.5%) and 47 (5%), respectively.

The semi-empirical relationships are useful for a preliminary estimate of the expected seismic-induced displacement of slopes but they cannot account for the aleatory variability of earthquake ground motion and displacement prediction. Therefore, many researchers developed fully probabilistic-based approaches stemming from the above semi-empirical relationships to introduce the concept of hazard associated to the calculated displacement (e.g. Rathje and Saygili 2008, 2009, 2011; Bradley 2012; Lari et al. 2014; Du and Wang 2016; Rodriguez-Marek and Song 2016; Macedo et al. 2018; Cho and Rathje 2020). The results of the probabilistic approach are typically illustrated in terms of displacement hazard curves, which provide the mean annual rate of exceedance λ_d (or the return period $T_r = 1/\lambda_d$) for different levels of

permanent displacements. In addition to the mentioned works, the probabilistic approach has been applied to the study of real slopes in different seismic areas throughout the world (e.g. Gülerce and Balal 2017; Wang and Rathje 2018), while Du et al. (2018) investigated the influence of the slope properties on the seismic displacement analysis. Within the same theoretical framework, the sliding block procedures and the probabilistic approaches have been also modified to account for the deformability of the sliding mass, to investigate more realistically the seismic performance of deep sliding mechanisms (e.g. Saygili and Rathje 2008; Rathje and Antonakos 2011; Song and Rodriguez-Marek 2015; Bray et al. 2018). Furthermore, in some cases the probabilistic approaches have been combined in a logic tree scheme to account for the epistemic uncertainty of the hazard (e.g. Rathje and Saygili 2009; Wang and Rathje 2018; Macedo et al. 2020).

The probabilistic approach can be profitably implemented on a regional scale using the ground motion hazard information to evaluate landslides hazard maps (Saygili and Rathje 2009; Wang and Rathje 2015; Chousianitis et al. 2016; Sharifi-Mood et al. 2017). These maps permit to identify the zones that are more susceptible to earthquake-induced slope instability and to evaluate the probability of occurrence of a displacement level in a specific time interval.

The present study aims to contribute towards the evaluation of earthquake-induced landslides hazard for Italy, which is characterised by a high level of seismicity. The displacement hazard curves and maps are developed for the Italian territory to provide a useful tool for practitioners and government agencies for a preliminary evaluation of the seismic performance of slopes, stemming from the updated seismic database and the results of the semi-empirical relationships adopted in the study. Both scalar and vector probabilistic approaches are employed: in the first case the peak ground acceleration (*PGA*) is used as ground motion parameter, while the combination of *PGA* with the peak ground velocity (*PGV*) is chosen for the vector approach. Although Cho and Rathje (2020) and Gaudio et al. (2020) demonstrate that the best double-parameters models are obtained for the couples Arias intensity and mean period (I_A, T_m) and (I_A, PGV), the couple of parameters *PGA, PGV* is here adopted because: (i) the ground motion prediction equations (sometimes denoted in the literature as attenuation laws) entering the probabilistic method are generally available only for *PGA* and *PGV*; and (ii) the standard seismic probabilistic hazard analysis (PSHA) is commonly developed in terms of peak ground acceleration.

The paper is organised as follows: the probabilistic approach proposed by Rathje and co-workers is firstly briefly summarised, highlighting the key ingredients and the procedure of analysis. The analyses results are then shown in terms of displacement hazard curves for different Italian sites; the effect of soil class and yield seismic coefficient of the slope on the results are discussed and the differences between the scalar and vector approaches are critically analysed.

Different ground motion prediction equations are used to obtain the displacement hazard curves for the vector approach and their influence on results is discussed. Finally, a series of hazard maps for the Irpinia district, in the Southern Italy, are illustrated for some threshold values of permanent displacement d_y and different yield seismic coefficients k_y .

2 Background: probabilistic approach

The displacement models predict the natural log of permanent horizontal displacement d as a function of the natural log of one or more ground motion parameters (*GM*) or earthquake magnitude.

For the single ground motion parameter model, the expression proposed by Ambraseys and Menu (1988) is adopted:

$$\ln(d) = a_0 + a_1 \ln\left(1 - \frac{k_y}{PGA}\right) + a_2 \ln\left(\frac{k_y}{PGA}\right) \tag{1}$$

where a_0 , a_1 and a_2 are regression coefficients and d is expressed in cm. The efficiency of the semi-empirical relationships is described by the standard deviation of the natural log of displacement σ_{\ln} (Cornell and Luco 2001). The advantage of Eq. (1) with respect to polynomial forms is that of complying with the conditions $d \rightarrow \infty$ for $k_y/PGA=0$ and $d=0$ for $k_y/PGA=1$ expected for the assumption of a rigid sliding block.

The results of a probabilistic analysis are synthesised in terms of seismic displacement hazard curves, providing the mean annual rate of exceedance λ_d for different levels of displacements given a yield seismic coefficient and a specific site. According to Cho and Rathje (2020) and Rathje et al. (2014), for the single ground motion PGA displacement model the annual rate of exceedance λ_d can be computed as:

$$\lambda_d(x) = \sum_i P[d > x|PGA_i] \times P[PGA_i] \tag{2}$$

where $P[d > x|PGA_i]$ is the probability of the displacement exceeding a specific value x , given a peak ground acceleration PGA_i , and $P[PGA_i]$ is the annual probability of occurrence of the ground motion level PGA_i . The evaluation of the annual rate of exceedance thus requires the integration of the product of these probabilities over all possible levels of PGA for the specific site. The first term is evaluated assuming a cumulative lognormal distribution function for displacement values x , where the mean value is provided by Eq. (1) and σ_{\ln} is the standard deviation. The second term is derived from differentiation of the PGA hazard curve obtained through a probabilistic seismic hazard analysis (PSHA). In detail it is (Rathje et al. 2014):

$$P[PGA_i] = \frac{\lambda(PGA_{i-1}) - \lambda(PGA_{i+1})}{2} \tag{3}$$

where λ is the mean rate of occurrence associated with adjacent PGA values in the hazard curve. Therefore, the probabilistic approach predicts the annual rate of exceedance λ_d of different levels of permanent displacements, similarly to the annual rate of exceedance λ for different levels of PGA , obtained by a PSHA.

Ambraseys and Menu (1988) suggest to modify Eq. (1) to account for the effects of other ground motion parameters. Therefore, along this track, the following semi-empirical relationship is proposed for the case of two ground motion parameters:

$$\ln(d) = a_0 + a_1 \ln\left(1 - \frac{k_y}{PGA}\right) + a_2 \ln\left(\frac{k_y}{PGA}\right) + a_3 \ln(PGV) \tag{4}$$

Equation (4) represents the key ingredient for the development of the vector approach. For the case of the couple of ground motion parameters (PGA , PGV), Rathje et al. (2014) provided the following expression for the evaluation of λ_d :

$$\lambda_d(x) = \sum_i \sum_j P[d > x|PGA_i, PGV_j] \times P[PGA_i, PGV_j] \tag{5}$$

where $P[d > x|PGA_i, PGV_j]$ is the probability of the displacement exceeding a specific value x , given the peak ground acceleration PGA_i and the peak ground velocity PGV_j , and $P[PGA_i, PGV_j]$ is the joint annual probability of occurrence of ground motion levels PGA_i and PGV_j . Again, the first term is calculated assuming a cumulative lognormal distribution function for displacement values x , with the mean value and the standard deviation σ_{ln} provided by Eq. (4). The double summation represents the integration over all levels of PGA and PGV . Although the joint annual probability should be rigorously computed via a vector probabilistic seismic hazard analysis VPSHA (Bazzurro and Cornell 2002), here the simplified approach is adopted to evaluate the former from the output obtained from a conventional PSHA:

$$P[PGA_i, PGV_j] = P[PGV_j|PGA_i] \times P[PGA_i] = \sum_k \sum_l P[PGV_j|PGA_i, M_k, R_l] \times P[M_k, R_l|PGA_i] \times P[PGA_i] \tag{6}$$

The term $P[M_k, R_l|PGA_i]$ represents the probability of occurrence of different earthquake magnitudes M and distances R calculated from the disaggregation of the hazard of PGA while $P[PGV_j|PGA_i, M_k, R_l]$ is computed assuming a lognormal distribution, with the mean value $\mu_{ln PGV|PGA, M, R}$ and the standard deviation $\sigma_{ln PGV|PGA, M, R}$ obtained as:

$$\begin{aligned} \mu_{ln PGV|PGA, M, R} &= \mu_{ln PGV} + \rho \frac{\sigma_{ln PGV}}{\sigma_{ln PGA}} (\ln PGA - \mu_{ln PGA}) \\ \sigma_{ln PGV|PGA, M, R} &= \sigma_{ln PGV} \sqrt{1 - \rho^2} \end{aligned} \tag{7}$$

The terms $\mu_{ln PGV}$, $\sigma_{ln PGV}$, $\mu_{ln PGA}$ and $\sigma_{ln PGA}$ are the mean values and the standard deviations of the ground motion parameters PGA , PGV and ρ is the correlation coefficient between PGA and PGV . The first quantities are calculated from the most suitable ground motion prediction equation (GMPE) depending on the specific site, whereas for the correlation coefficient the procedure illustrated by Rathje and Saygili (2008) is adopted:

$$\rho = \frac{\sum_i (\varepsilon_{PGA_i} - \bar{\varepsilon}_{PGA})(\varepsilon_{PGV_i} - \bar{\varepsilon}_{PGV})}{\sqrt{\sum_i (\varepsilon_{PGA_i} - \bar{\varepsilon}_{PGA})^2 \sum_i (\varepsilon_{PGV_i} - \bar{\varepsilon}_{PGV})^2}} \tag{8}$$

where ε_{PGA} , ε_{PGV} , $\bar{\varepsilon}_{PGA}$ and $\bar{\varepsilon}_{PGV}$ are the normalised residuals for the ground motion parameters PGA , PGV and the mean value on the total number of observations, computed as:

$$\varepsilon_{GM} = \frac{\ln GM_{observed} - \ln GM_{predicted}}{\sigma_{ln GM}} \tag{9}$$

where $\ln GM_{observed}$ is the natural log of the observed ground motion and $\ln GM_{predicted}$ is the natural log of the ground motion parameter predicted by the GMPE.

3 Results of the probabilistic approach

The results of the probabilistic approach can be synthesised in terms of displacement hazard curves, plotting the mean annual rate of exceedance λ_d for different levels of permanent displacements and in terms of hazard maps, showing the distribution of the return period

$T_r = 1/\lambda_d$ for a given permanent displacement. Hazard curves and maps are developed for different zones of the Italian territory and the main factors affecting the results are critically analysed. The results have been obtained using the ground motion database described by Gaudio et al. (2020), that provide details on the seismic events considered in the analyses.

According to Gaudio et al. (2020), the permanent displacements are computed with the rigid sliding-block model (Newmark 1965) for the simple scheme of an infinite slope assuming a constant shear strength, that is a constant k_y , during earthquake loading. Computation have been carried out for different values of the yield seismic coefficient, using an updated version of the Italian strong motion database. Four values of $k_y = 0.08, 0.1, 0.12, 0.15$ are taken into account as they represent the average values of the yield seismic coefficient for the scheme of an infinite slope characterised by angle of slope inclination in the range of $5\text{--}20^\circ$ and angles of shearing resistance $\phi' = 22^\circ\text{--}28^\circ$. Table 1 reports the regression coefficients of the semi-empirical relationships evaluated for computed displacements greater than 0.0001 cm. Despite very small values of displacements are meaningless from an engineering perspective, they have been considered to develop semi-empirical relationships capable to fit satisfactory the data as the *PGA* approaches k_y . The coefficients of the semi-empirical relationships are further specialised to account for the influence of the subsoil class on the probabilistic approach.

The permanent displacements computed through the Newmark’s method using the whole database are plotted in Fig. 1 versus *PGA*, for four values of the seismic coefficient k_y .

The grey lines represent the predictions of the scalar semi-empirical relationship of Eq. (1) specialised for the different values of the yield seismic coefficient. It is seen that the adopted model not only predicts correctly the conditions at the extrema but also nicely reproduces the non-linear variation of the permanent displacements with *PGA*.

The computed permanent displacements and the semi-empirical relationships are plotted in Fig. 2 against the ratio k_y/PGA for the whole database and the three subsoil classes (A, B and C). The vector predictive equation is plotted for two values of *PGV* within the range associated to the recorded ground motions: *PGV* = 10 and 30 cm/s.

As reported in Table 1, the use of the two parameters semi-empirical relationship reduces significantly the standard deviation associated to the Newmark’s displacements as compared to the scalar approach: an expected result as the couple of ground motion parameters *PGA*, *PGV* are more representative of the strong motion database that the *PGA* only. Furthermore, to assess the quality of the predicted equations, the residuals of

Table 1 Regression parameters for displacement models for different ground motion parameters and subsoil classes

Subsoil class	GM parameter	a_0	a_1	a_2	a_3	σ_{ln}
All	<i>PGA</i> (g)	−1.365	2.075	−2.409	−	1.027
	<i>PGA</i> (g), <i>PGV</i> (cm/s)	−3.358	2.094	−0.830	1.401	0.572
A	<i>PGA</i> (g)	−2.016	1.931	−3.008	−	0.979
	<i>PGA</i> (g), <i>PGV</i> (cm/s)	−3.501	2.019	−1.188	1.285	0.642
B	<i>PGA</i> (g)	−1.595	1.984	−2.376	−	0.989
	<i>PGA</i> (g), <i>PGV</i> (cm/s)	−3.379	2.108	−0.662	1.441	0.550
C	<i>PGA</i> (g)	0.697	2.270	−2.183	−	1.066
	<i>PGA</i> (g), <i>PGV</i> (cm/s)	−3.446	2.045	−0.954	1.417	0.551

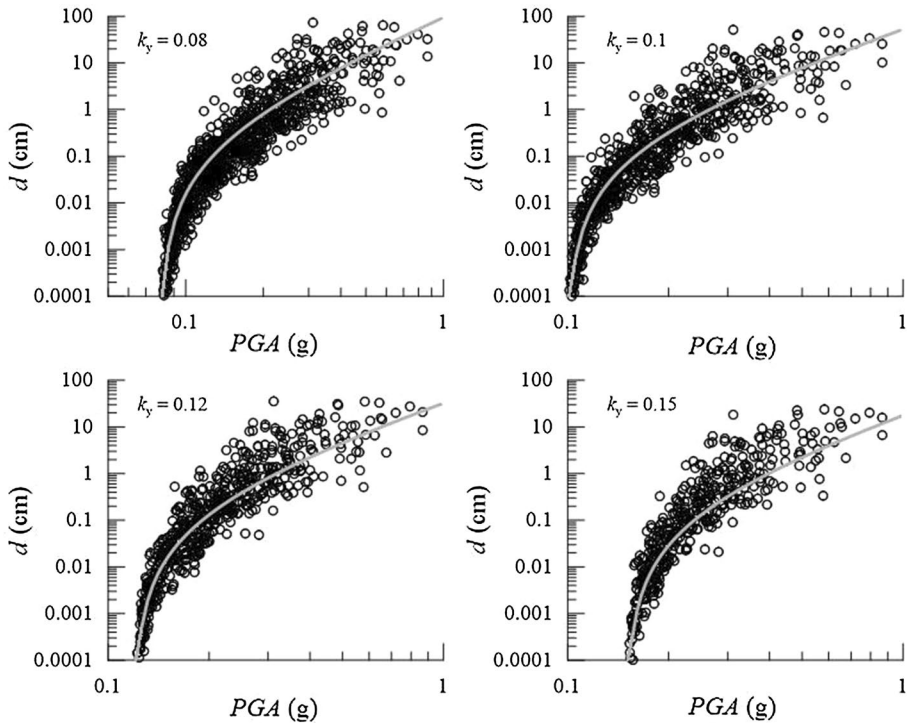


Fig. 1 Single ground motion parameter (*PGA*) semi-empirical relationships for different values of k_y

the displacements $\ln d_{\text{observed}} - \ln d_{\text{predicted}}$ have been calculated for the scalar and vector models, where $\ln d_{\text{observed}}$ represents the displacement calculated through the Newmark's method and $\ln d_{\text{predicted}}$ is the value of displacement predicted by the semi-empirical relationships. Figures 3 (a–c) show the residuals against k_y/PGA while Fig. 3 (b–d) show the mean of residuals for different k_y/PGA bins and the standard deviation of the mean values. It is seen that the vector approach predicts about halved values of the residuals with respect to the scalar one, with a trend characterised by negligible biases for increasing values of k_y/PGA and no relevant variation of the standard deviations with k_y/PGA .

To better compare the efficiency of the scalar and vector models, Fig. 4 shows the variation of the standard deviation with k_y/PGA : $\sigma_{\ln d}$ is significantly reduced when the *PGA*, *PGV* model is used, its values being nearly constant with k_y/PGA .

The residuals of the displacements plotted against other relevant ground motion parameters show negligible bias, especially for the vector approach, hence demonstrating that the regressions adopted in this study are appropriate for the Italian ground motion database. For the sake of conciseness, the results are reported in the Appendix (Fig. 21).

3.1 Displacement hazard curves

The displacement hazard curves represent a very attractive tool in the common practice to obtain a preliminary indication of the seismic performance of a slope. In fact, they allow to evaluate the frequency of occurrence of a given displacement for a slope in a specific

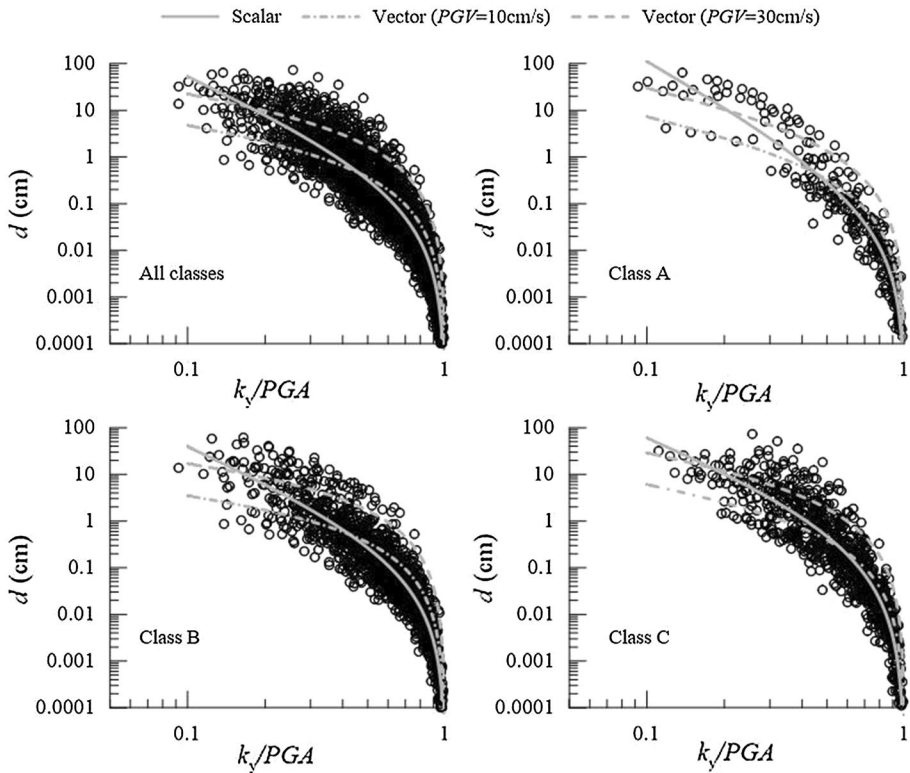


Fig. 2 Scalar and vector semi-empirical relationships for different soil classes

site or, alternatively, the level of displacement for the slope associated with a given return period. A key ingredient of the probabilistic approach summarised in the previous section are the semi-empirical relationships of Eqs. (1) and (4), which provide the mean value and the standard deviation of the displacement d .

In addition, Eqs. (2) and (5) require specific site information of the seismic hazard. Therefore, the results of the probabilistic approach depend on the slope characteristics, via the yield seismic coefficient, and the collected strong motion database, as well as on the seismic hazard of the site at hand.

Figure 5 shows the PGA hazard curve and the displacement hazard curve obtained through the scalar probabilistic approach for the Italian site of Amatrice, afflicted by the 2016 Central Italy seismic sequence, assuming $k_y = 0.1$. The PGA hazard curves have been extracted from the INGV interactive seismic hazard maps (<http://esse1.mi.ingv.it/d2.html>) that permits to query probabilistic seismic hazard maps of the Italian territory on a regular grid spaced by 0.05° . The PGA hazard curves are provided for rock-like (class A) subsoil with reference to the 16th, 50th and 84th percentile only, representing multiple fractiles of the hazard curve to account for the epistemic uncertainty in the ground motion hazard.

The computed displacement hazard curves show a decreasing annual rate of exceedance with increasing permanent displacements, as expected, with the dashed lines showing the effect of the epistemic uncertainty on the curve. In the following, the mean hazard curves are considered in computations. With reference to the mean hazard curve,

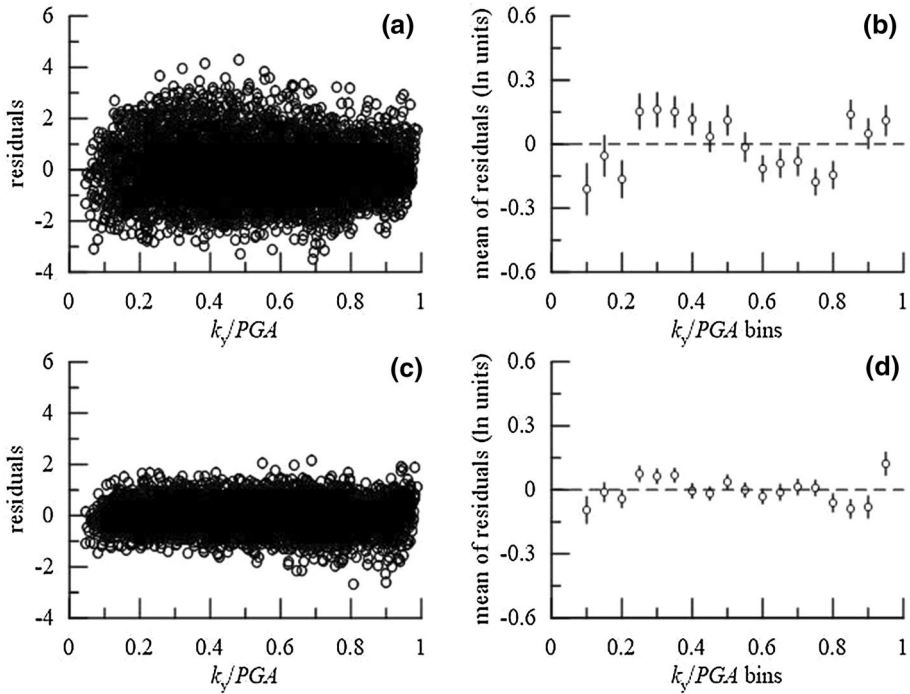
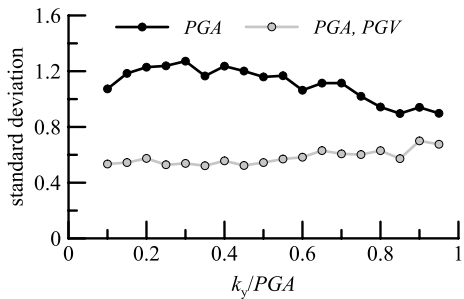


Fig. 3 Residuals and mean residuals versus k_y/PGA for scalar approach (a, b) and vector approach (c, d)

Fig. 4 Variation of standard deviation (σ_{in}) of displacements with k_y/PGA for scalar and vector models



for threshold displacement $d_y = 2$ cm, related to a rock-like subsoil, $d_y = 5$ cm, related to a brittle soil behaviour, and $d_y = 15$ cm, related to a free-field ductile soil behaviour (Idriss 1985; Wilson and Keefer 1985), return periods $T_r = 1/\lambda_d$ of about 850, 2250 and 12,500 years are obtained.

Figure 6a–c show the displacement hazard curves computed using the scalar approach with $k_y = 0.1$ for three Italian areas: Central Italy, Emilia (Northern Italy) and Irpinia (Southern Italy).

Despite the significant number of sites investigated, a relatively narrow variability of the displacement hazard curves is observed, so that homogeneous macro-areas can be recognised in terms of seismic hazard, with lower and upper bounds of the displacement

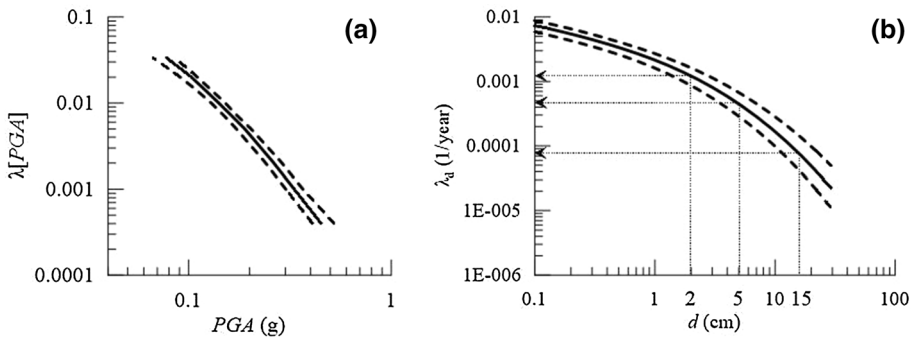


Fig. 5 Scalar approach: **a** PGA hazard curve for Amatrice site and **b** displacement hazard curve for $k_y = 0.1$

hazard curves for each area, as shown in Fig. 6d. For a given displacement level d , the annual rate of exceedance is greater for Irpinia and Central Italy than Emilia as the latter is characterised by a lower seismic hazard. In other words, the probability of occurrence of a permanent sliding displacement in two similar slopes located in two different sites solely differs for the site-specific seismic hazard.

According to the Newmark’s sliding block analysis, the seismic resistance of a slope, described by the yield seismic coefficient, is a crucial ingredient for the evaluation of the permanent displacements of a slope subjected to an earthquake. As a consequence, Eqs. (1) and (4) explicitly depend on the values of k_y adopted for the integration of the acceleration time histories, thus affecting the results of the probabilistic analysis in terms of displacement hazard curves.

This aspect is illustrated in Fig. 7 for the site of Amatrice, stemming from the scalar probabilistic approach: the curves are associated to four different values of the yield seismic coefficient by virtue of the dependence of Eq. (1) on k_y . The more stable is the slope (i.e. greater is k_y), the lower is the annual rate of exceedance associated to a given displacement (e.g. Rathje and Saygili 2009; Macedo et al. 2018).

The results discussed till now refer to the signals recorded at all the stations located in the Italian territory, irrespective of the subsoil class associated to each station.

Figure 8 illustrates the displacement hazard curves computed with the scalar approach for the Amatrice site, distinguishing the three subsoil classes and using $k_y = 0.1$. It is seen that higher annual rate of exceedance λ_d is computed for soft (class C) subsoil as compared to that of stiff (class B) subsoil or, in other terms, for class C sites the model predicts the largest displacements at fixed rate of exceedance. This is consistent with the fact that the ground motions recorded on soft soils are richer in low frequencies than those recorded on stiff soils, hence leading to larger displacements. It is less clear the trend observed for the case of rock-like (class A) subsoil, for which the smallest displacements are expected, while the obtained hazard curve lies between those computed for classes B and C. This could be attributed to the fact that for rock-like subsoils about 50% of the records with $PGA > 0.2$ g are characterised by high values of the mean period $T_m > 0.4$ s, that could explain the unexpectedly high displacements computed for subsoil class A, leading the hazard displacement curve to the right of that obtained for subsoil class B (see Figs. 17, 18, 19, 20 in the Appendix). The displacement hazard curve obtained for the whole database is also plotted in Fig. 8.

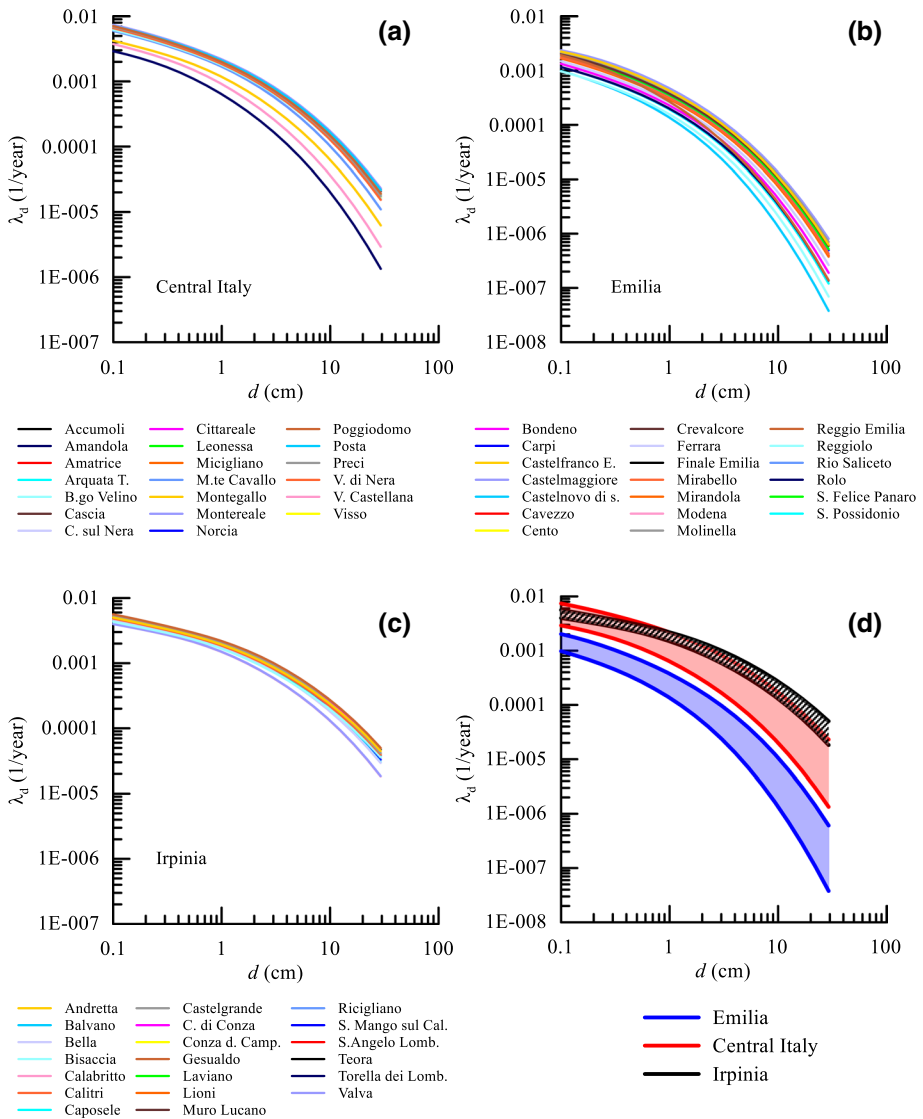


Fig. 6 Scalar approach: displacement hazard curves for different Italian sites ($k_y=0.1$): **a** Central Italy, **b** Emilia, **c** Irpinia, **d** comparison of the three macro-areas

The displacement hazard curves can be also computed through the vector probabilistic approach using the couple of ground motion parameters PGA , PGV . The PGA hazard curve and the disaggregation information for probability of exceedance equal to 2, 5, 10, 22, 30, 39, 50, 63, 81% for the Italian territory, used in Eqs. (3) and (6), are available at the INGV interactive website (<http://esse1.mi.ingv.it/d2.html>). The disaggregation is provided for each point of the grid for epicentral distance R in the range of 0 to 200 km and magnitude $M = 3.5-9$.

Fig. 7 Scalar approach: effect of for k_y on the displacement hazard curves for the Amatrice site

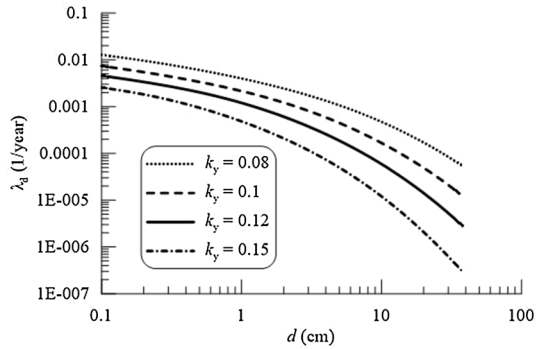
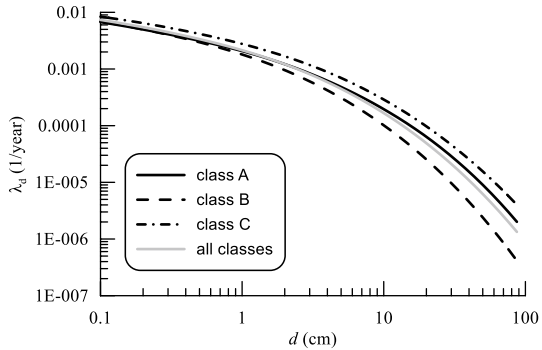


Fig. 8 Scalar approach: effect of subsoil class on the displacement hazard curves for Amatrice site ($k_y=0.1$)



The ground motion prediction equation of Lanzano et al. (2019) is adopted in this work as it improves the predictive capability for the Italian seismicity with respect to the GMPE proposed by Sabetta and Pugliese (1996) and Bindi et al. (2010). It provides the median values and the standard deviation used in Eq. (7) and leads to a correlation coefficient $\rho = 0.843$ calculated through Eq. (8). Figure 9 compares the displacement hazard curves computed with the scalar and the vector probabilistic approaches for the site of Amatrice using a yield seismic coefficient $k_y = 0.1$ and distinguishing the three subsoil classes. The vector approach always predicts smaller values of λ_d in the whole range of permanent displacements considered in the analysis, thus reducing the hazard estimate. For instance, with reference to case of all subsoil classes together, for a 10% probability of exceedance in 50 years (return period $T_r=475$ years) the displacements are equal to about 1.0 cm and 0.65 cm using the scalar and the vector approach, respectively, whereas for a 2% probability of exceedance in 50 years (return period $T_r=2475$ years) displacements of about 5.2 cm and 4.0 cm are obtained. This result is consistent with the outcomes of Rathje and Saygili (2008) and Cho and Rathje (2020). In fact, the semi-empirical relationship accounting for *PGA* and *PGV* leads to smaller standard deviation and median displacements as compared with the *PGA* prediction displacement equation, as reported in Table 1.

Similarly to the scalar approach, Fig. 10 shows the displacement hazard curves computed with the vector approach for the site of Amatrice using a yield seismic coefficient $k_y = 0.1$ and distinguishing the three subsoil classes. Again, the curve obtained for the class C subsoil leads to larger displacements at fixed annual rate of exceedance as compared to that of stiff soils (class B). A less clear trend is still observed for the class A subsoil, as

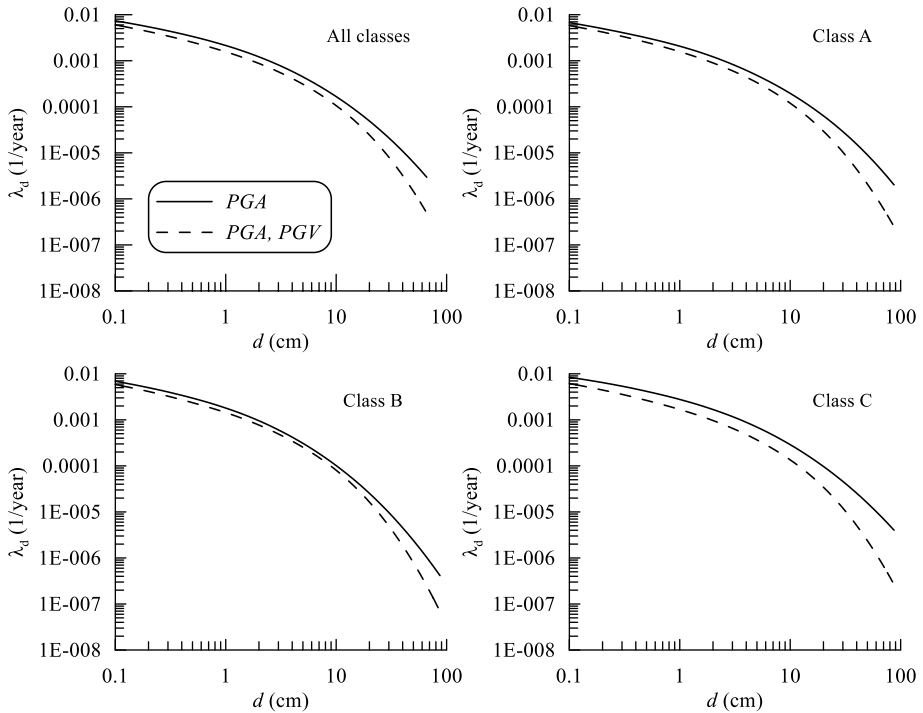
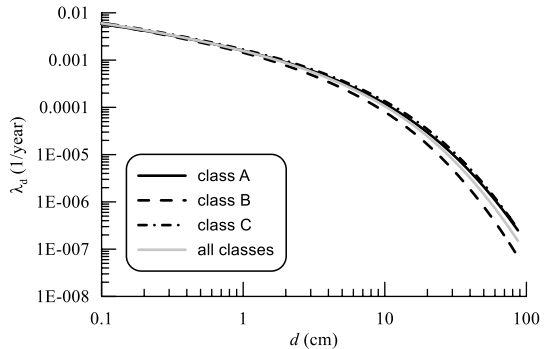


Fig. 9 Displacement hazard curves for Amatrice site: scalar vs vector approach for $k_y=0.1$ and different subsoil classes

Fig. 10 Vector approach: effect of subsoil class on the displacement hazard curves for Amatrice site ($k_y=0.1$)

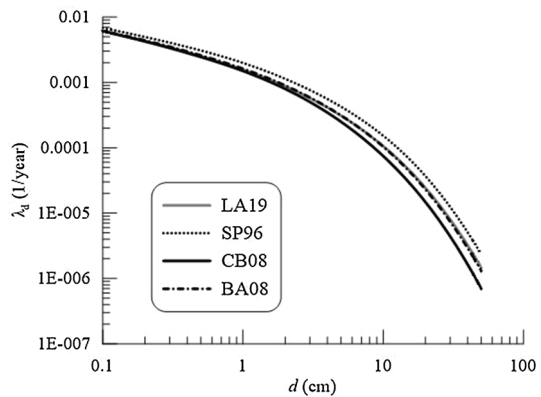


mentioned above. Nevertheless, the effect of the subsoil classes on the hazard curves provided by the vector approach is less pronounced than that observed for the scalar approach.

As for the scalar approach, the displacement hazard curves obtained from a vector probabilistic analysis depend on the seismic resistance of the slope via the critical seismic coefficient k_y and on the site seismicity. However, the GMPE represents an additional feature with respect to the single parameter approach and should be selected on the base of the seismicity of the investigated site. This is why the law proposed by Lanzano et al. (2019) is adopted in this work, that accounts for the relevant earthquakes occurred in Italy during the last decade. Nevertheless, to investigate the role of the ground motion prediction equation

Table 2 Correlation coefficient for different ground motion prediction equations

GMPE	Correlation coefficient ρ
Sabetta and Pugliese (1996) (SP96)	0.731
Lanzano et al. (2019) (LA19)	0.843
Boore and Atkinson (2008) (BA08)	0.773
Campbell and Bozorgnia (2008) (CB08)	0.767

Fig. 11 Effect of GMPE on the displacement hazard curves for Amatrice site ($k_y = 0.1$)

on the displacement hazard curves, the probabilistic analyses have been also performed using other GMPEs: the one proposed by Sabetta and Pugliese (1996), also derived for Italian seismicity and, for comparison, the well-known predictive equations of Boore and Atkinson (2008) and Campbell and Bozorgnia (2008). Table 2 summarises the values of the correlation coefficient calculated through Eq. (8).

The correlation coefficients assume positive values, proving that the ground motion parameters PGA and PGV are positively correlated, in agreement to what obtained by Rathje and Saygili (2008), and show small changes among the different prediction equations, the higher value of ρ being provided by the Lanzano et al. (2019) GMPE.

The GMPE also affect the values of $\mu_{\ln PGV|PGA, M, R}$ and $\sigma_{\ln PGV|PGA, M, R}$ provided by Eq. (7). Figure 11 shows the displacement hazard curve computed for the site of Amatrice and $k_y = 0.1$ using the same GMPEs listed in Table 2, demonstrating that the influence of different ground motion prediction equations is negligible.

3.2 Displacement hazard maps

Hazard maps are more effective than the hazard curves to identify the hazard of earthquake-induced landslides for a specific area. The probabilistic approach is used in the following to develop the hazard maps for the district of Irpinia (Campania), in the South Italy, about 50 km East of Naples. The area has an extension of about $40 \times 40 \text{ km}^2$, is largely mountainous and centred on the section of the Apennines, a zone of Italy characterised by a severe seismic hazard and affected by many severe earthquakes that induced instability phenomena in several natural slopes (Porfido et al. 2002; Del Gaudio and Wasowski 2004).

The seismic hazard of the area under study is plotted in Fig. 12 in terms of distribution of PGA for the return period of 475 years (10% of probability of exceedance in 50 years). Information pertaining to the seismicity of the zone have been extracted from the INGV interactive seismic hazard maps (<http://esse1.mi.ingv.it/d2.html>) and refer to the rock-like (class A) subsoil.

The displacement model used for the hazard maps is based on a generic site class, considering the whole set of records of the area irrespective of the subsoil class associated to each station. In fact, due to the uncertainty related to the variability of soils at the regional scale, it is more convenient to consider the displacement model accounting for all the subsoil classes.

The hazard maps depict the contours of the return periods T_r associated to different levels of seismic-induced displacement and yield seismic coefficient. It is worth mentioning that the maps do not account for the morphology of the region and the real distribution of the landslides. However, they are provided for different values of k_y , so that they can be used for a preliminary evaluation of the seismic hazard of the region for different slope scenarios, each one characterised by a different value of k_y . The hazard maps are developed stemming from both the scalar and the vector probabilistic approaches. Figure 13 shows the contours of the return period obtained from the two approaches for a threshold displacement $d_y = 15$ cm and $k_y = 0.1$. The Cartesian coordinates of the map are East and North according to the reference coordinate system WGS84. The return periods are smaller for the scalar than the vector approach, again demonstrating that the vector probabilistic approach reduces the displacement hazard levels because of the more complete information provided by the combination of multiple ground motion parameters.

Figure 14 shows the contour maps obtained from the vector approach for a threshold displacement $d_y = 2$ cm and different values of the yield seismic coefficient. As expected, the return periods associated to a given value of d_y increases with k_y . The variability of T_r is

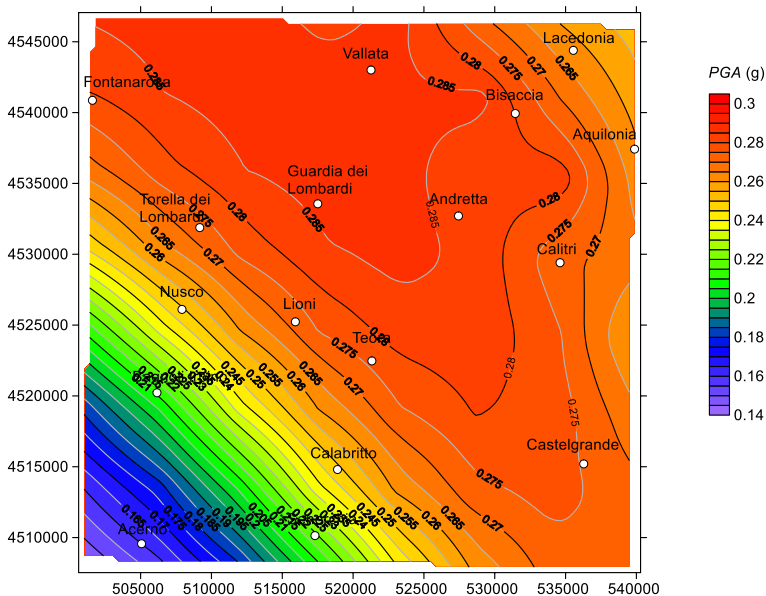


Fig. 12 Ground motion hazard maps for the Irpinia district: distribution of PGA for $T_r = 475$ years

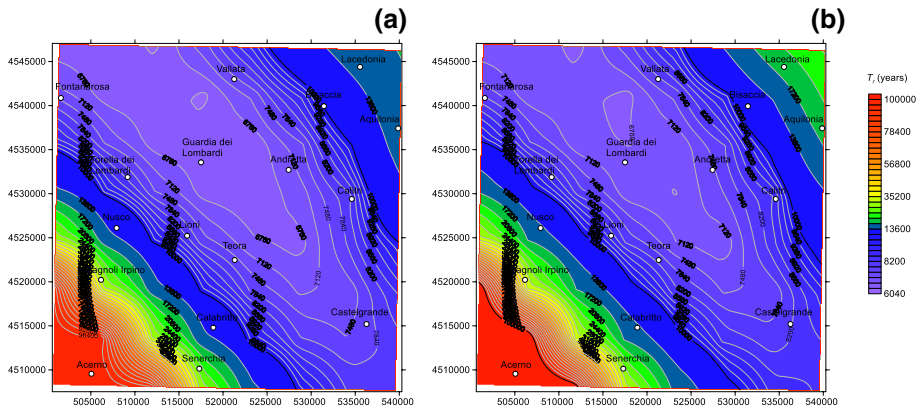


Fig. 13 Hazard maps for the Irpinia district for $d_y=15$ cm and $k_y=0.1$: **a** scalar approach; **b** vector approach

clearly associated to the *PGA* hazard curves and disaggregation information of the region, that is more severe for the zone of the Apennines extending from North-Western to South-Eastern corners of the map. Therefore, the contour lines are nearly parallel to the NW–SE diagonal of the map, with larger return periods in the South-Western area, where hills take place of the mountains.

Similar results are shown in Figs. 15 and 16 for permanent threshold displacements equal to 5 and 15 cm. In agreement to what discussed for the hazard curves in the previous section, the larger is the admissible level of displacement, the larger is the related return period.

4 Summary and conclusions

The increasing adoption of probabilistic methods in engineering practice experienced in last decades has been the incentive to revisit the problem of seismic slope stability and highlight the advantages of this methodology to assess the seismic performance of natural slopes.

In this paper, the probabilistic approach formalised by Rathje and co-workers is adopted to evaluate the permanent slope displacement induced by earthquake loading for the Italian territory.

The probabilistic analyses are performed stemming from the earthquake-induced displacements evaluated through a Newmark-type computation under the simple hypothesis of a rigid sliding block, employing the Italian strong motion database updated by Gaudio et al. (2020). The method benefits from the large amount of recently available earthquake data and thus better characterises the variability in the strong ground motion. The results of the probabilistic approach are first summarised in terms of displacement hazard curves, showing the annual frequency of exceedance associated to the seismic-induced slope displacements.

Two probabilistic methods have been used: a scalar approach, characterised by the single ground motion parameter *PGA* and a vector approach, in which the ground motion is described by the couple of parameters *PGA*, *PGV*. The semi-empirical relationships

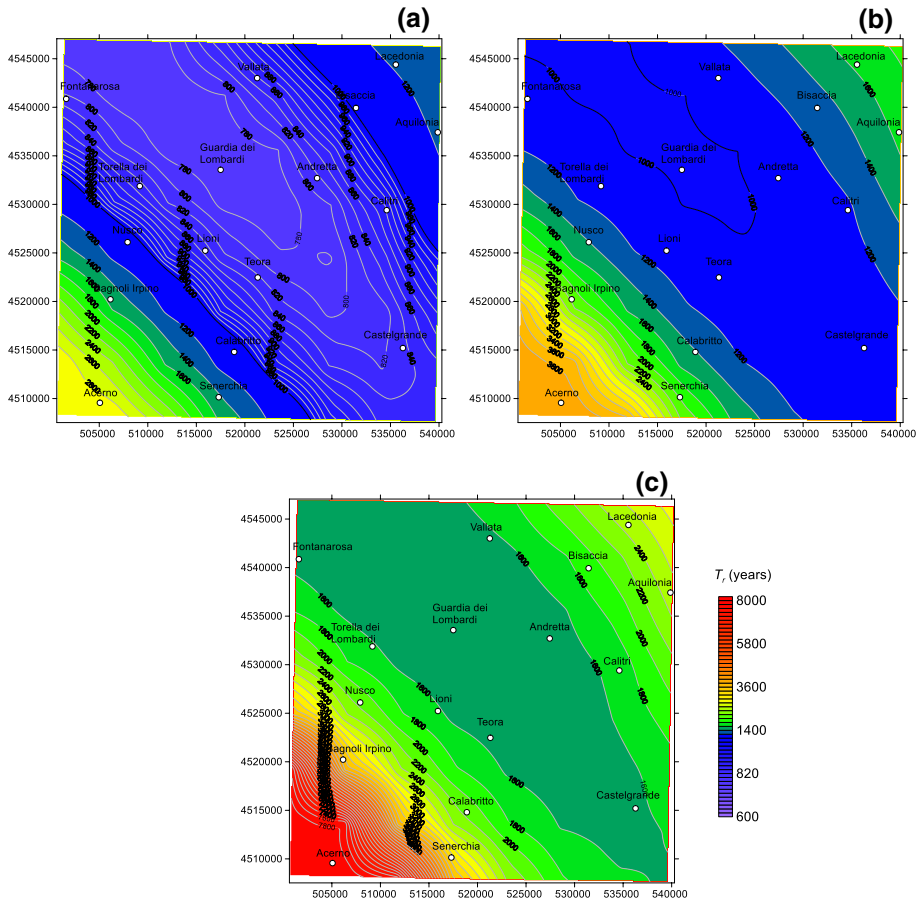


Fig. 14 Vector approach: hazard maps for the Irpinia district for $d_y = 2$ cm: **a** $k_y = 0.1$, **b** $k_y = 0.12$, **c** $k_y = 0.15$

adopted in this study, linking the slope displacements to the ground motion parameters mentioned above, permit to evaluate the earthquake-induced displacements for different values of the yield seismic coefficient k_y and different subsoil classes. The displacements provided by the *PGA*, *PGV* model are characterised by a lower standard deviation and lower residuals than the scalar one, also proving that the biases of the residuals with some significant ground motion parameters are negligible. In both cases, seismic hazard information pertaining to the specific site is a key ingredient requiring a standard probabilistic hazard analysis, whose results are available throughout the Italian territory and synthesised in terms of *PGA* hazard curves and disaggregation information. The influence of the site-specific seismic hazard information on the results of the probabilistic analysis have been first investigated with reference to the scalar approach. The displacement hazard curves, computed for three different sites in Italy, demonstrate that it is possible to identify homogeneous macro-areas in terms of displacement hazard curves, highlighting, as expected, that a more severe seismic hazard increases the hazard associated to the permanent slope displacements. In addition, with reference to a specific site, the hazard reduces with the yield seismic coefficient that represents the seismic

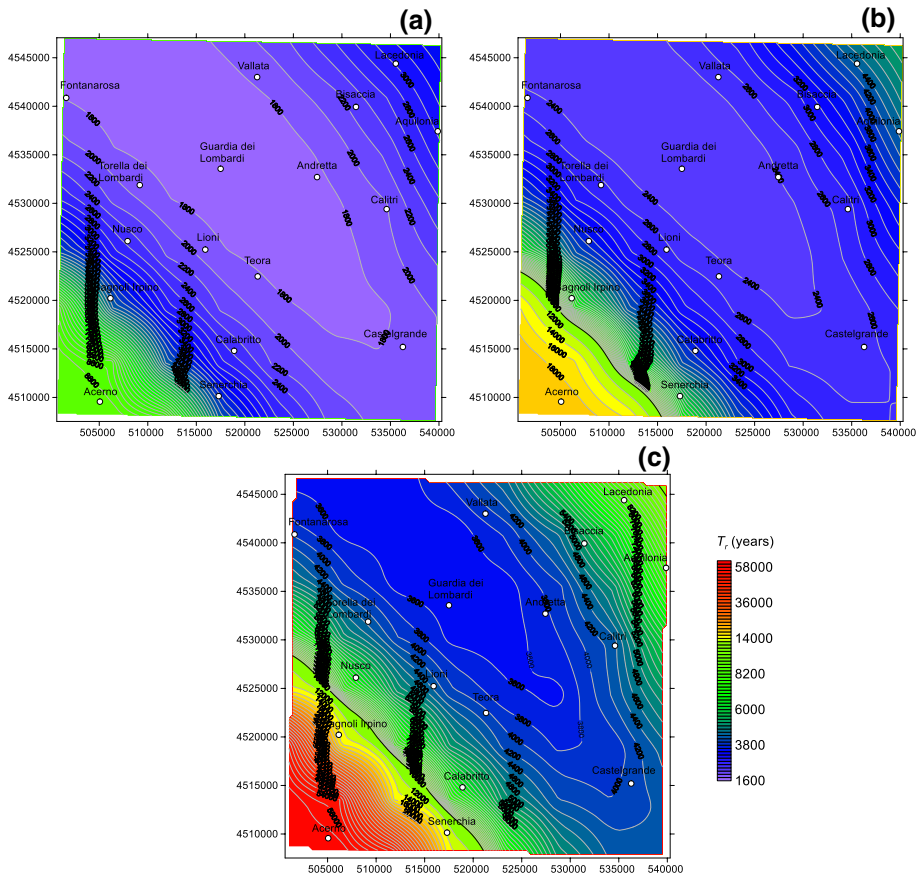


Fig. 15 Vector approach: hazard maps for the Irpinia district for $d_y = 5$ cm: **a** $k_y = 0.1$, **b** $k_y = 0.12$, **c** $k_y = 0.15$

resistance of a slope. In principle, the probabilistic approach does not account for the subsoil class. In this paper, the influence of site conditions on the hazard curves has been investigated referring the semi-empirical relationships for seismic-induced slope displacements to the subsoil class of the recording stations of the Italian strong motion database. It has been shown that the hazard increases for the soft (class C) subsoil due to the lower frequency content of the ground motions, while it decreases for signals recorded on stiff soils.

The results of the scalar and the vector approaches have been also compared, showing that the latter provides a lower estimate of the seismic hazard, as a result of the more reliable description of input motion through two ground motion parameters. Indeed, the scalar approach, despite its simplicity, cannot account for the complexity of the input motion in that the ground motion parameter *PGA* alone is not sufficient to describe the main features of a seismic event. Use of the couple *PGA*, *PGV* parameters also showed to be less sensible to site conditions, in that the displacement hazard curves computed for subsoil of class A, B and C plotted in a narrower band than that observed for the scalar approach. Therefore, for what mentioned above, the vector approach should be preferred to the scalar one to compute the seismic hazard maps at a regional scale.

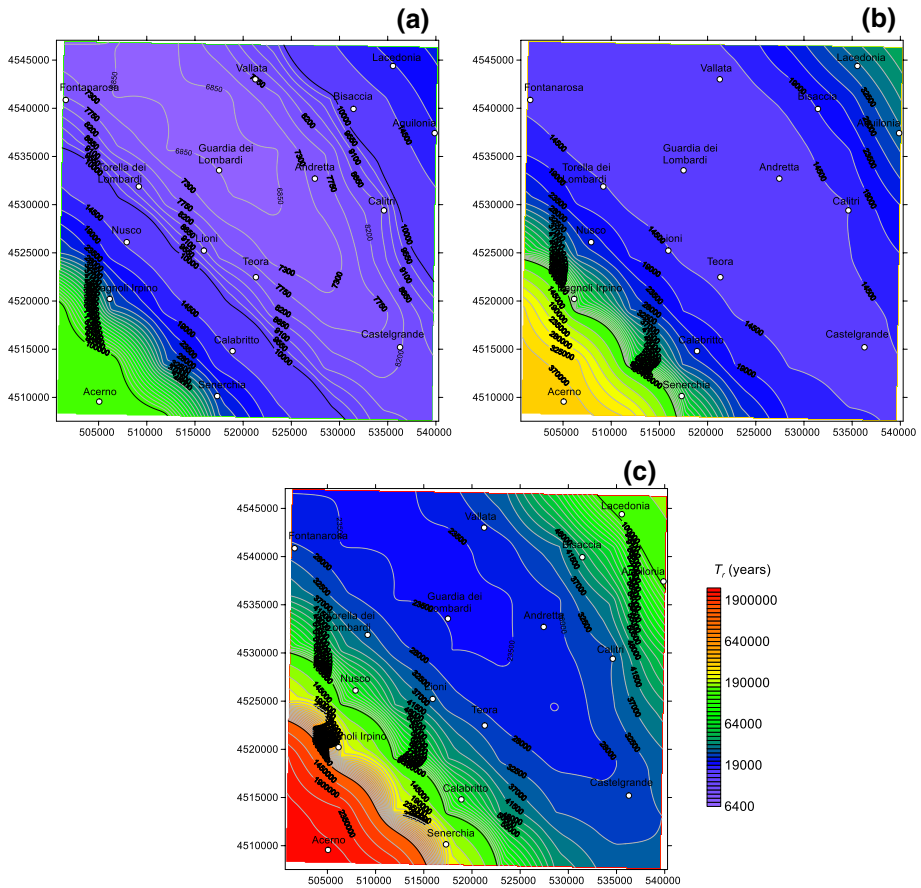


Fig. 16 Vector approach: hazard maps for the Irpinia district for $d_y = 15$ cm: **a** $k_y = 0.1$, **b** $k_y = 0.12$, **c** $k_y = 0.15$

The proposed probabilistic approach has been applied to the study area of Irpinia district, located in the Southern Italy and characterised by a high seismic hazard, computing seismic landslide hazard maps that provide the return periods associated with different values of threshold earthquake-induced displacements and seismic yield coefficient. Consistently with the results obtained for the hazard curves, the seismic hazard maps show increasing return periods as the threshold displacements and the seismic yield coefficient increase.

The results presented in this paper show that the probabilistic approach represents a useful tool for a preliminary evaluation of the seismic performance of slopes. The displacement hazard curves provide site-specific information, whereas the hazard maps are suitable for the analysis and the evaluation of the seismic risk of natural slopes at a regional scale. The probabilistic nature of these maps also enables them to be combined with other hazards for a more complete hazard analysis, useful for disaster management to minimise damages caused by earthquake-induced landslides.

The hypothesis of rigid sliding block should be intended as appropriate for the study of shallow translational mechanisms. Nevertheless, the procedure can be extended to

account for the deformability of the sliding mass. Other possible aspects that could be considered to improve the accuracy of seismic landslide maps are the spatial variability of soil properties and the topographic amplification of ground shaking, thus improving further the predictive capability of seismic landslide hazard maps.

Appendix

The seismic database were divided into five groups depending on the subsoil of the recording stations, according to the classification provided by Eurocode 8, Part I (CEN 2003): rock-like subsoil (class A), dense coarse-grained and stiff fine-grained subsoils (class B), medium dense coarse-grained and medium stiff fine-grained subsoil (class C), loose coarse-grained and soft fine-grained subsoil (class D) and subsoils with stiffness of class C or D underlain by stiffer material (class E).

Figure 17 shows the relative frequency distribution of M_w , R_{ep} , PGA , PGV , T_m and D_{5-95} for the subsoil classes A, B and C. The records on classes D and E were neglected as they represent only 1.5% and 5% of the total strong motions, respectively.

The datasets are similarly distributed over the considered ground motion parameters with a lower number of records for subsoil class A, especially for values of PGA and PGV greater than 0.2 g and 10 cm/s, respectively. The distribution shows that values of PGA and PGV are strongly correlated, with most frequent peak ground acceleration and velocity falling between 0.05 and 0.1 g and between 1 and 5 cm/s, respectively.

The relationships between different ground motion parameters are distinguished for the three subsoil classes A, B and C. The moment magnitude M_w is plotted in Fig. 18 against the epicentral distance, while Figs. 19, 20 show the peak ground velocity PGV and Arias intensity I_A , as well as the mean period T_m and spectral acceleration S_a ($1.5T_s$) against the peak ground acceleration PGA . As expected, PGV , I_A and S_a ($1.5T_s$) increase with increasing PGA , while no remarkable influence is observed for T_m . However, for subsoil class A it is seen that the 50% of the records with values of $PGA > 0.2$ g are characterised by high values of the mean period $T_m > 0.4$ s that could explain why the semi-empirical relationships provide unexpectedly high displacements for subsoil class A, leading the hazard displacement curve to the right of that computed for subsoil class B.

Figure 21 shows the variation of the residuals obtained from the one-parameter (PGA) and the two-parameters (PGA , PGV) models with M_w , PGV , S_a ($1.5T_s$) and R_{ep} ; the grey lines in the figures represent the mean of residuals. For all the considered ground motion parameters, the vector approach provides much lower residuals with nearly constant mean values, proving that the semi-empirical relationship of Eq. (4) is suitable for the application to the Italian territory.

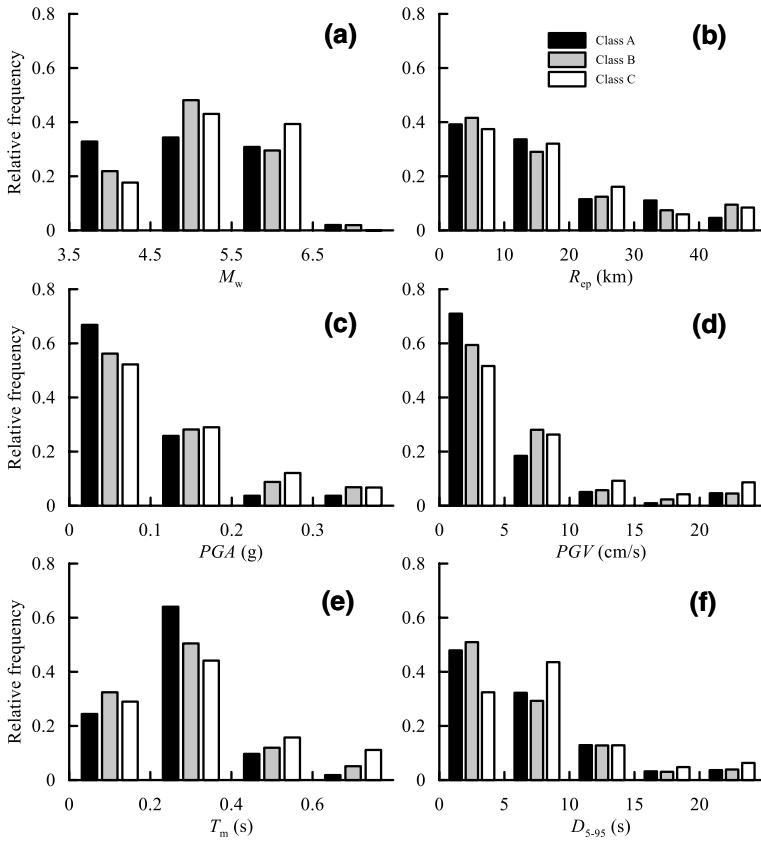


Fig. 17 Frequency distribution of **a** Moment magnitude, **b** epicentral distance, **c** peak ground acceleration, **d** peak ground velocity, **e** mean period and **f** significant duration for different subsoil classes

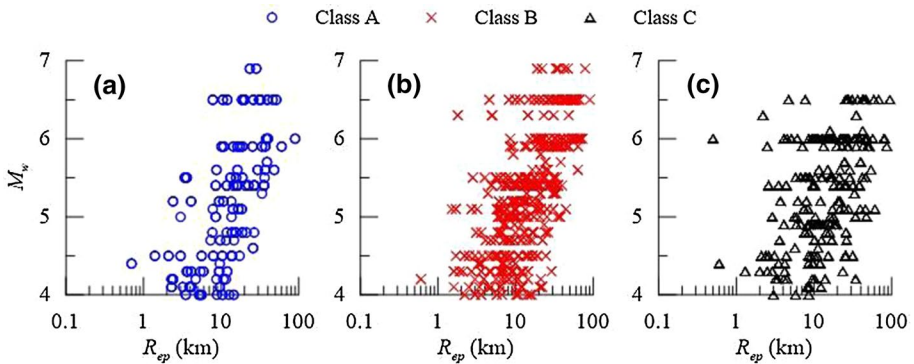


Fig. 18 Moment magnitude against epicentral distance of the seismic database for subsoil classes A, B and C

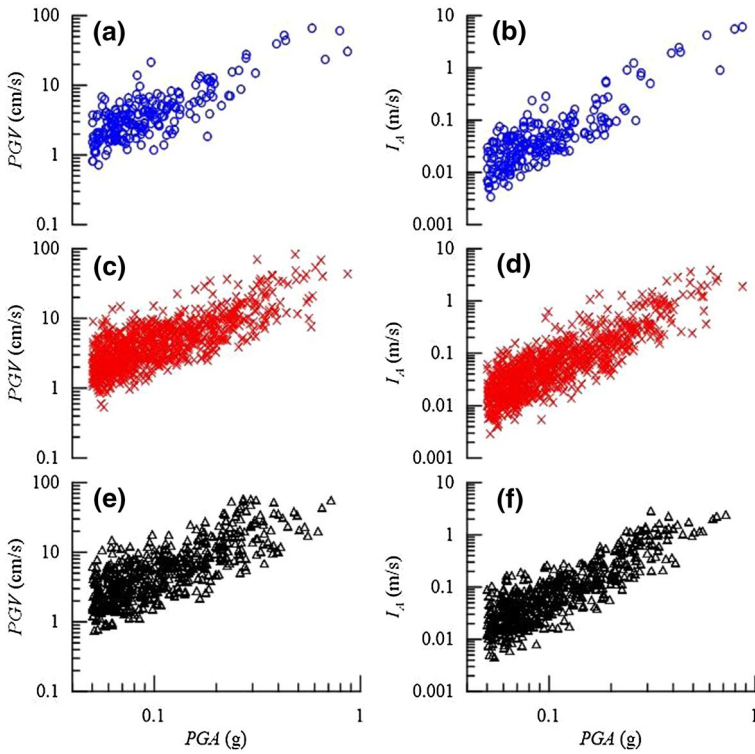


Fig. 19 Ground motion characteristics of the seismic database: PGV and I_A against PGA for **a-b** class A subsoil, **c-d** class B subsoil and **e-f** class C subsoil

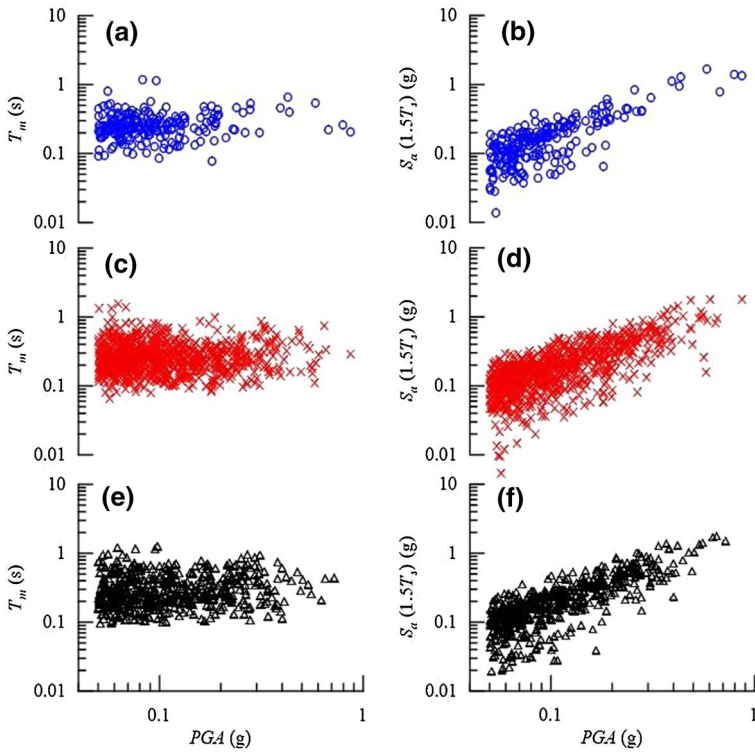


Fig. 20 Ground motion characteristics of the seismic database: T_m and $S_a(1.5T_s)$ against PGA for **a–b** class A subsoil, **c–d** class B subsoil and **e–f** class C subsoil

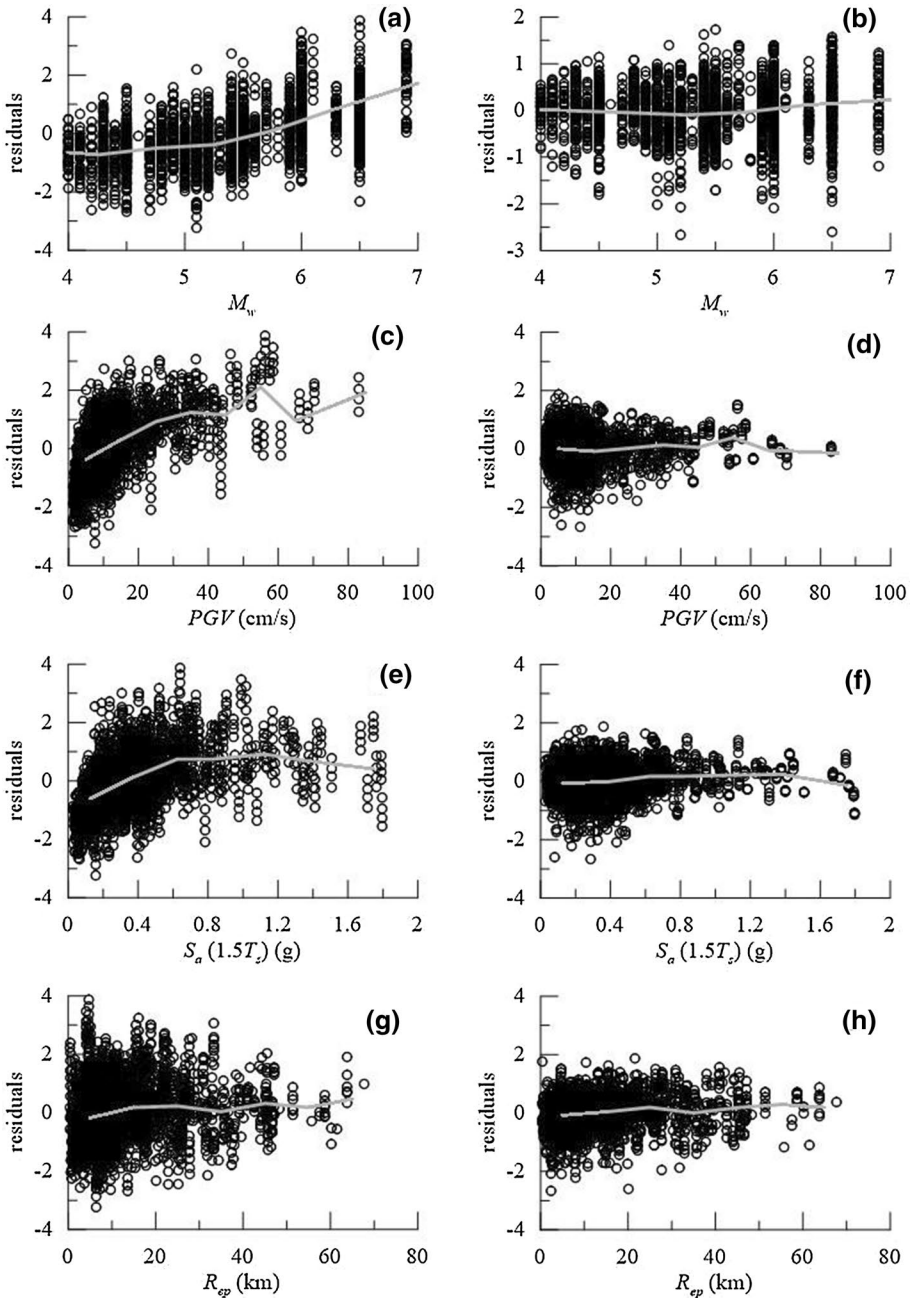


Fig. 21 Residuals for scalar (a, c, e, g) and vector (b, d, f, h) semi-empirical relationships

Acknowledgements The research work presented in this paper was partly funded by the Italian Department of Civil Protection under the ReLUIIS research project – Working Package 16: *Geotechnical Engineering – Task Group 2: Slope stability*

Funding Open access funding provided by Università degli Studi di Roma La Sapienza within the CRUI-CARE Agreement.

Declarations

Conflict of interest The authors declare that they have no conflict of interest.

Open Access This article is licensed under a Creative Commons Attribution 4.0 International License, which permits use, sharing, adaptation, distribution and reproduction in any medium or format, as long as you give appropriate credit to the original author(s) and the source, provide a link to the Creative Commons licence, and indicate if changes were made. The images or other third party material in this article are included in the article's Creative Commons licence, unless indicated otherwise in a credit line to the material. If material is not included in the article's Creative Commons licence and your intended use is not permitted by statutory regulation or exceeds the permitted use, you will need to obtain permission directly from the copyright holder. To view a copy of this licence, visit <http://creativecommons.org/licenses/by/4.0/>.

References

- Ambraseys NN, Menu JM (1988) Earthquake-induced ground displacements. *Earthquake Eng Struct Dynam* 16(7):985–1006
- Bandini V, Biondi G, Cascone E, Rampello S (2015) A GLE-based model for seismic displacement analysis of slopes including strength degradation and geometry rearrangement. *Soil Dyn Earthq Eng* 71:128–142
- Bazzurro, P., and Cornell, C. A. (2002). Vector-valued probabilistic seismic hazard analysis (VPSHA). *Proc., 7th U.S. National Conf. on Earthquake Engineering*, Vol. II, EERI, Oakland, Calif, pp. 1313–1322.
- Bindi D, Luzi L, Massa M, Pacor F (2010) Horizontal and vertical ground motion prediction equations derived from the Italian Accelerometric Archive (ITACA). *Bull Earthq Eng* 8(5):1209–1230
- Biondi G, Cascone E, Rampello S (2011) Valutazione del comportamento dei pendii in condizioni sismiche. *Rivista Italiana Di Geotecnica* 45(1):9–32
- Boore DM, Atkinson GM (2008) Ground-motion prediction equations for the average horizontal component of PGA, PGV, and 5%-damped PSA at spectral periods between 0.01 s and 10.0 s. *Earthquake Spectra* 24(1):99–138
- Bradley BA (2012) The seismic demand hazard and importance of the conditioning intensity measure. *Earthquake Eng Struct Dynam* 41(11):1417–1437
- Bray JD, Macedo J (2019) Procedure for estimating shear-induced seismic slope displacement for Shallow Crustal Earthquakes. *J Geotech Geoenviron Eng* 145(12):04019106
- Bray JD, Travararou T (2007) Simplified procedure for estimating earthquake-induced deviatoric slope displacements. *J Geotech Geoenviron Eng* 133(4):381–392
- Bray JD, Macedo J, Travararou T (2018) Simplified procedure for estimating seismic slope displacements for subduction zone earthquakes. *Journal of Geotechnical and Geoenvironmental Engineering* 144(3):04017124
- Campbell KW, Bozorgnia Y (2008) NGA ground motion model for the geometric mean horizontal component of PGA, PGV, PGD and 5% damped linear elastic response spectra for periods ranging from 0.01 to 10 s. *Earthquake Spectra* 24(1):139–171
- CEN (Comité Européen de Normalisation) (2003) prEN 1998–1- Eurocode 8: design of structures for earthquake resistance. Part 1: General rules, seismic actions and rules for buildings. Draft No 6, Doc CEN/TC250/SC8/N335, January 2003, Brussels.
- Cho Y, Rathje EM (2020) Displacement hazard curves derived from slope-specific predictive models of earthquake-induced displacement. *Soil Dyn Earthq Eng* 138:106367
- Chousianitis K, Del Gaudio V, Kalogeras I, Ganas A (2014) Predictive model of Arias intensity and Newmark displacement for regional scale evaluation of earthquake-induced landslide hazard in Greece. *Soil Dyn Earthq Eng* 65:11–29

- Chousianitis K, Del Gaudio V, Sabatakakis N, Kavoura K, Drakatos G, Bathrellos GD, Skilodimou HD (2016) Assessment of earthquake-induced landslide hazard in Greece: from arias intensity to spatial distribution of slope resistance demand assessment of earthquake-induced landslide hazard in Greece. *Bull Seismol Soc Am* 106(1):174–188
- Cornell C. A., Luco, N. (2001). Ground motion intensity measures for structural performance assessment at near-fault sites: In *Proceedings of the U.S.-Japan joint workshop and third grantees meeting, U.S.-Japan cooperative research on urban earthquake disaster mitigation*. Seattle: Washington.
- Del Gaudio V, Wasowski J (2004) Time probabilistic evaluation of seismically induced landslide hazard in Irpinia (Southern Italy). *Soil Dyn Earthq Eng* 24(12):915–928
- Del Gaudio V, Pierri P, Wasowski J (2003) An approach to time-probabilistic evaluation of seismically induced landslide hazard. *Bull Seismol Soc Am* 93(2):557–569
- Di Fillippo, G., Biondi, G., Cascone, E. (2019). Influence of earthquake-induced pore-water pressure on the seismic stability of cohesive slopes. *Proceedings of the 7th International Conference on Earthquake Geotechnical Engineering 7th ICEGE, Rome, Italy*, 1–9.
- Du W, Wang G (2016) A one-step Newmark displacement model for probabilistic seismic slope displacement hazard analysis. *Eng Geol* 205:12–23
- Du W, Wang G, Huang D (2018) Influence of slope property variabilities on seismic sliding displacement analysis. *Eng Geol* 242:121–129
- Fotopoulou SD, Pitilakis KD (2015) Predictive relationships for seismically induced slope displacements using numerical analysis results. *Bull Earthq Eng* 13(11):3207–3238
- Gaudio D, Rausedo R, Masini L, Rampello S (2020) Semi-empirical relationships to assess the seismic performance of slopes from an updated version of the Italian seismic database. *Bull Earthq Eng*. <https://doi.org/10.1007/s10518-020-00937-6>
- Gülerce Z, Balal O (2017) Probabilistic seismic hazard assessment for sliding displacement of slopes: an application in Turkey. *Bull Earthq Eng* 15(7):2737–2760
- Idriss, I.M. (1985). Evaluating seismic risk in engineering practice. In: *Proceedings of the eleventh international conference on soil mechanics and foundation engineering*. San Francisco, CA, pp. 255–320.
- Jibson RW (2007) Regression models for estimating coseismic landslide displacement. *Eng Geol* 91(2–4):209–218
- Jibson RW (2011) Methods for assessing the stability of slopes during earthquakes - A retrospective. *Eng Geol* 122(1–2):43–50
- Lanzano G, Luzi L, Pacor F, Felicetta C, Puglia R, Sgobba S, D'Amico M (2019) A revised ground-motion prediction model for shallow crustal earthquakes in Italy. *Bull Seismol Soc Am* 109(2):525–540
- Lari S, Frattini P, Crosta GB (2014) A probabilistic approach for landslide hazard analysis. *Eng Geol* 182:3–14
- Luzi L, Pacor F, Lanzano G, Felicetta C, Puglia R, D'Amico M (2019) 2016–2017 Central Italy seismic sequence: strong-motion data analysis and design earthquake selection for seismic microzonation purposes. *Bull Earthq Eng* 18(12):5533–5551
- Macedo J, Bray J, Abrahamson N, Travarasou T (2018) Performance-based probabilistic seismic slope displacement procedure. *Earthq Spectra* 34(2):673–695
- Macedo J, Candia G, Lacour M, Liu C (2020) New developments for the performance-based assessment of seismically-induced slope displacements. *Eng Geol* 277:105786
- Maugeri M, Simonelli AL, Ferraro A, Grasso S, Penna A (2011) Recorded ground motion and site effects evaluation for the April 6, 2009 L'Aquila earthquake. *Bull Earthq Eng* 9(1):157–179
- Ministero delle Infrastrutture (2018). Norme tecniche per le costruzioni. *Gazzetta Ufficiale della Repubblica Italiana* 8. Decreto Ministero Infrastrutture 20/01/2018, Roma (in Italian).
- Mollaioli F, AlShawa O, Liberatore L, Liberatore D, Sorrentino L (2019) Seismic demand of the 2016–2017 Central Italy earthquakes. *Bull Earthq Eng* 17(10):5399–5427
- Mucciarelli M, Liberatore D (2014) Guest editorial: the Emilia 2012 earthquakes, Italy. *Bull Earthq Eng* 12:2111–2116. <https://doi.org/10.1007/s10518-014-9629-6>
- Newmark NM (1965) Effects of earthquakes on dams and embankments. *Geotechnique* 15(2):139–160
- Porfido S, Esposito E, Vittori E, Tranfaglia G, Michetti AM, Blumetti M, Serva L (2002) Areal distribution of ground effects induced by strong earthquakes in the Southern Apennines (Italy). *Surv Geophys* 23(6):529–562
- Rampello S, Callisto L, Fagnoli P (2010) Evaluation of slope performance under earthquake loading conditions. *Rivista Italiana Di Geotecnica* 44(4):29–41
- Rathje EM, Antonakos G (2011) A unified model for predicting earthquake-induced sliding displacements of rigid and flexible slopes. *Eng Geol* 122(1–2):51–60
- Rathje EM, Saygili G (2008) Probabilistic seismic hazard analysis for the sliding displacement of slopes: scalar and vector approaches. *J Geotech Geoenviron Eng* 134(6):804–814

- Rathje EM, Saygili G (2009) Probabilistic assessment of earthquake-induced sliding displacements of natural slopes. *Bull N Z Soc Earthq Eng* 42(1):18–27
- Rathje EM, Saygili G (2011) Estimating fully probabilistic seismic sliding displacements of slopes from a pseudoprobabilistic approach. *J Geotech Geoenviron Eng* 137(3):208–217
- Rathje EM, Wang Y, Stafford PJ, Antonakos G, Saygili G (2014) Probabilistic assessment of the seismic performance of earth slopes. *Bull Earthq Eng* 12(3):1071–1090
- Rodriguez-Marek A, Song J (2016) Displacement-based probabilistic seismic demand analyses of earth slopes in the near-fault region. *Earthq Spectra* 32(2):1141–1163
- Sabetta F, Pugliese A (1996) Estimation of response spectra and simulation of nonstationary earthquake ground motions. *Bull Seismol Soc Am* 86(2):337–352
- Saygili G, Rathje EM (2008) Empirical predictive models for earthquake-induced sliding displacements of slopes. *J Geotech Geoenviron Eng* 134(6):790–803
- Saygili G, Rathje EM (2009) Probabilistically based seismic landslide hazard maps: an application in Southern California. *Eng Geol* 109(3–4):183–194
- Sharifi-Mood M, Olsen MJ, Gillins DT, Mahalingam R (2017) Performance-based, seismically-induced landslide hazard mapping of Western Oregon. *Soil Dyn Earthq Eng* 103:38–54
- Song J, Rodriguez-Marek A (2015) Sliding displacement of flexible earth slopes subject to near-fault ground motions. *J Geotech Geoenviron Eng* 141(3):04014110
- Song J, Gao Y, Rodriguez-Marek A, Feng T (2017) Empirical predictive relationships for rigid sliding displacement based on directionally-dependent ground motion parameters. *Eng Geol* 222:124–139
- Tropeano G, Silvestri F, Ausilio E (2017) An uncoupled procedure for performance assessment of slopes in seismic conditions. *Bull Earthq Eng* 15(9):3611–3637
- Wang Y, Rathje EM (2015) Probabilistic seismic landslide hazard maps including epistemic uncertainty. *Eng Geol* 196:313–324
- Wang Y, Rathje EM (2018) Application of a probabilistic assessment of the permanent seismic displacement of a slope. *J Geotech Geoenviron Eng* 144(6):04018034
- Wilson RC, Keefer DK (1985) Predicting areal limits of earthquake-induced landsliding. In: Ziony ED (ed) *Evaluating Earthquake Hazard in the Los Angeles Region*. US Geological Survey, Reston, pp 317–345

Publisher's Note Springer Nature remains neutral with regard to jurisdictional claims in published maps and institutional affiliations.