

Prospect for UV observations from the Moon

Margarita Safonova · Joice Mathew · Rekhesh Mohan ·
A.G. Sreejith · Jayant Murthy · Noah Brosch ·
Norbert Kappelmann · Arpit Sharma · Rahul Narayan

Received: 23 March 2014 / Accepted: 8 July 2014 / Published online: 23 July 2014
© Springer Science+Business Media Dordrecht 2014

Abstract Space astronomy in the last 40 years has largely been done from spacecraft in low Earth orbit (LEO) for which the technology is proven and delivery mechanisms are readily available. However, new opportunities are arising with the surge in commercial aerospace missions. We describe here one such possibility: deploying a small instrument on the Moon. This can be accomplished by flying onboard the Indian entry to the Google Lunar X PRIZE competition, Team Indus mission, which is expected to deliver a nearly 30 kgs of payloads to the Moon, with a rover as its primary payload. We propose to mount a wide-field far-UV (130–180 nm) imaging telescope as a payload on the Team Indus lander. Our baseline operation is a fixed zenith pointing but with the option of a mechanism to allow observations of different attitudes. Pointing towards intermediate ecliptic latitude (50° or above) ensures that the Sun is at least 40° off the line of sight at all times. In this position, the telescope can cover higher galactic latitudes as well as parts of Galac-

tic plane. The scientific objectives of such a prospective are delineated and discussed.

Keywords Google Lunar X PRIZE GLXP · Lunar observatory · Far-UV · Telescope

1 Introduction

The Earth's atmosphere absorbs and scatters UV photons preventing observations of the active Universe. UV-emitting phenomena are generally associated with high-energy activity: massive star formation, hot transients such as supernovae (SNe), which are UV bright for hours to days, variability of AGN, where the amplitude of the variability usually increases at shorter wavelengths, variable stars such as M-dwarfs with UV-flaring activity on time scales of hundreds of seconds, and flashes from cosmic collisions which can be very energetic on all scales. The UV range is a critical tool for classifying and studying these hot transients.

Tidal disruption events (TDEs) by massive black holes give rise to yet another source of flares in the UV, where the object can continue to be UV bright for months. A supermassive black hole (SMBH) at the centre of a typical galaxy disrupts a main sequence (MS) star every 10^4 – 10^5 years (e.g. Alexander 2005; Gezari et al. 2009), and a planet as often as that or even more considering that the expected number of free-floating planets exceeds the number of stars by at least two orders of magnitude (Gahm et al. 2013).

More than a thousand exoplanets are now known (about 1800 planets confirmed and more than 3800 waiting for confirmation at time of writing¹ with more than a third of

M. Safonova (✉) · J. Mathew · R. Mohan · A.G. Sreejith ·
J. Murthy
Indian Institute of Astrophysics, Koramangala 2nd block,
Bangalore, 560034, India
e-mail: rita@iiap.res.in

N. Brosch
The Wise Observatory and the Dept. of Physics and Astronomy,
Tel Aviv University, Tel Aviv 69978, Israel

N. Kappelmann
Kepler Center for Astro and Particle Physics, Institute of
Astronomy and Astrophysics, University of Tübingen, Sand 1,
72076, Tübingen, Germany

A. Sharma · R. Narayan
Team Indus, Axiom Research Labs Private Limited, D-37,
Sector-63, Noida, UP, India

¹Extrasolar Planets Encyclopedia, <http://exoplanet.eu/catalog/>, June 2014.

them being young systems with host ages of less than 3 Gyr (Shchekinov et al. 2014). In such systems collisions at all scales are possible: planet-planet, planet-star and collisions of smaller objects/debris (planetesimals, asteroids, comets) which result in flashes and flares peaking in the extreme-UV (EUV)/UV. Even in our own Solar System, there are a large number of asteroidal collisions which create rock fragments of all sizes that subsequently impact planets. For example, an impact on the asteroid Vesta has been identified as the most probable cause of HED meteorites (Howardite, Eucrite, Diogenite class of achondrites) influencing the near-Earth space (see Pieters et al. 2006 and references therein). Recent cataclysmic events such as the Shoemaker-Levy 9 (SL-9) comet impact on Jupiter and the 2013 Chelyabinsk meteor crash in Russia (the most probable parent of this $\sim 10,000$ tons and 18-m diameter bolide is the shattered PHA 2011 EO40, which has a possible family of up to 20 asteroids of different sizes (de la Fuente Marcos and de la Fuente Marcos 2013), have renewed attention to such threats.

Earth is constantly bombarded from space. Meteoroids of size from tens of cms and larger enter the Earth's atmosphere on daily to monthly basis. If they are smaller than some tens of metres, they ablate before reaching the ground. An object with a mass of 10,000 kg collides with Earth approximately every 1–5 years. Though at present there are approximately 620,000 asteroids that are tracked in our Solar System, this number is less than one percent of the estimated objects that orbit the Sun and less than 10 % of all Near-Earth Objects (NEO) have been discovered (Yeomans 2013). Moreover, while NEO-participating observatories look for them in the Northern Hemisphere (such as e.g., Palomar Transient Factory, the Catalina Sky Survey, Pan-STARRS and SkyMapper), not much is done in the South (the only one observatory in the Southern Hemisphere—at Siding Spring, Australia—has reduced its operations to only occasional observations due to budget cuts, and the Large Synoptic Survey Telescope (LSST) is still some years away from operation). The best way to find possible impactors—potentially hazardous asteroids (PHA)² (Fig. 1)—would be to put a space wide-field near-IR telescope to look outward from the orbit of Venus.

But the second best, as compared to the more affordable LEO space telescopes, is the Moon. This would allow observing the incoming objects on their last part of the trajectory before impacting. Although not useful for early warning, this information would be helpful in understanding the early stage of the interaction of an incoming body with the outermost layers of the atmosphere.

²These are the asteroids which can come within 0.05 AU from the Earth and which are larger than 140 m in size.

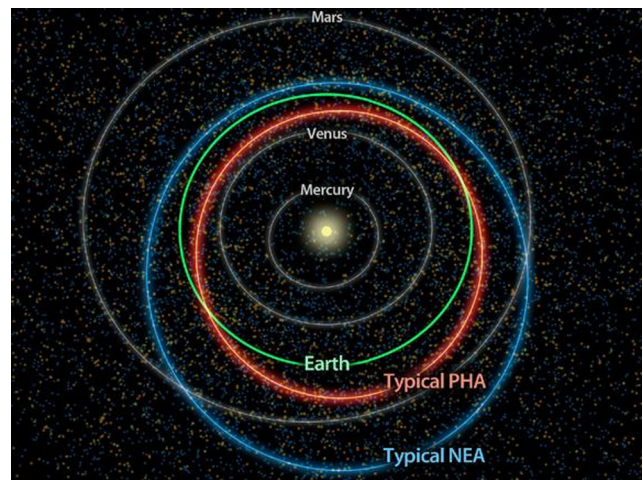


Fig. 1 Illustration of orbits of NEO and PHA. Source: NASA

The Moon was first proposed by astronomers as a prime site for large telescopes nearly 50 years ago (Tift 1966). Essential absence of atmosphere and ionosphere offered an unobstructed view of the space in all wavelengths, and lunar surface and low gravity offered a stable platform on which to build large telescopes. The Moon has several advantages and disadvantages as a base for astronomical observatories, thus scientists cannot come to a consensus about the benefits of using the Moon as a site for deep space astronomy (e.g., Brosch 2009). On the one hand, in the near-vacuum of the Moon, there are no atmospheric related problems like opacity, thermal conductivity, wind, and seeing. Observations can be made continuously, provided that a telescope is shielded from the Sun and has constant power supply. The lunar regolith is fairly stable and offers a firm surface on which to build and operate telescopes without requiring costly and fault-prone stabilizing mechanisms. On the other hand, the successful operation of the Hubble Space Telescope (HST) has shown that space-based telescopes have fewer problems in the much more easily accessible LEO environment. There is also a possibility of regular servicing, which is harder to do on the Moon. However, the trend of placing astronomical telescopes in the L_2 Lagrangian point indicates that the issue of servicing is minor, in comparison to the quality of the location. Therefore it was decided that space observatories are more cost-effective than lunar-based observatories. However, the ambitions were always for the large lunar telescopic installations with 4–100 m mirrors or total mass of 10–30 tons of radio antennas (e.g. Douglas and Smith 1985; Angel et al. 2008), driven possibly by the fact that since we are going to the Moon anyway, we can as well make it big.³

³As the famous quote by Kraft Ehrlicke goes “The exploration and settlement of the Moon must be done on a grand scale” (Benaroya 2010).

A UV/optical transit telescope that uses the slow lunar sidereal rate was first proposed by McGraw (1994), with further development by Nein and Hilchey (1995). Modest-sized UV/O/IR fully-steerable robotic telescopes using lightweight optics have been also proposed (Chen et al. 1994) and it was suggested that a large 20-m liquid mirror telescope (Angel et al. 2008) with UV imaging capability has the potential to surpass the sensitivity of HST and even JWST by orders of magnitude (Klimas et al. 2010). However, the first and only scientific UV observations from the Moon to date were made by Apollo 16 team in 1972.

We were recently given an opportunity to fly an astronomical instrument onboard the Team Indus Lunar lander to the Moon. Team Indus⁴ is an Indian entry to the Google Lunar X PRIZE (GLXP) competition.⁵ This mission is a soft-landing mission and carries a mini-exploration rover amongst other instruments. After the touchdown, all scientific instruments will be turned on in a pre-defined sequence with the highest priority being accorded to the Team Indus' rover deployment.

Our primary challenge was to come up with an instrument that would do good science within the constraints imposed by the primary mission, one of the major is that we have to deliver the payload by mid-2015. We have chosen a wide-field UV telescope—Lunar Ultraviolet Cosmic Imager (LUCI), operating in the far-UV (FUV) range of 130–180 nm, taking advantage of the transparency of the lunar sky to the UV. Our primary science goal is detections of transients such as, for example, TDEs, or SNe in distant galaxies as a probe for cosmological distant scale. SNe discovered in optical surveys, are usually caught too late, when the UV emission is already fading. If we detect SNe early, the hot thermal emission from the ejecta is bright in the UV. As we perform our survey of the sky, we will also pick up other transients such as near-Earth asteroids, as well as produce an FUV catalog of the sky. We will also map the hot stellar distribution in the Galactic disk.

2 History of astronomical observations from the Moon

2.1 Previous science from the Moon

The very first instrument to fly to the Moon was Luna 1, a Soviet lunar impactor which, unfortunately, missed the Moon in January 1959 and became a solar orbiter. It performed the first-ever direct measurements of the solar wind,

⁴Official website is <http://blog.teamindus.in>.

⁵The Google Lunar X PRIZE is the international \$30 million competition to run a rover for at least 500 m on the lunar surface, sponsored by Google and operated by the X PRIZE Foundation; official website <http://www.googlelunarprize.org/>.

measured the particle level in the outer radiation belts and found no signature of a lunar magnetic field. Actual scientific exploration of and from the Moon began when Luna 2 landed on the Moon on September 14, 1959. The instruments were similar to those of Luna 1. Luna 2 detected fluctuations in the electron flux and energy spectrum in the Van Allen radiation belt, finding no evidence of a lunar magnetic field or radiation belt. Further spacecraft in the Luna series continued the exploration of the Moon with Luna 3 taking the first photographs of the far side of the Moon on October 7 1959, showing far fewer signs of volcanic plains than expected which stimulated a revision of lunar evolution theories. Subsequently, Luna 9 and 10 measured the radiation fields in near-lunar space and determined that the lunar dusty ground could support a lander.

On August 23 1966, NASA's Lunar Orbiter 1 sent back the world's first image of the Earth from the vicinity of the Moon. NASA's Ranger missions in the early 1960s, in particular Ranger 7, 8 and 9, transmitted high-resolution images of the lunar surface before crashing into it. Following the Rangers, the Lunar Surveyor series (1 to 7) at the end of that decade soft-landed television cameras and other scientific tools to test the lunar surface prior to human landings in the Apollo program. The Apollo missions of 1969–1972 extended the studies of the Earth-Moon system interactions.

Lunar exploration was put on halt in 1976 with the completion of Soviet Luna program until the Hiten Flyby and Orbiter mission in 1990 (Uesugi et al. 1991), followed by several missions of different countries, roughly one every four years. However, these missions were all aimed at studying the Moon itself and its environment, rather than using the lunar surface as a base for astronomical observations, perhaps because of the success of orbital observatories at a fraction of the cost of a lunar base.

2.2 UV from the Moon

The S201-experiment FUV camera (50–160 nm) deployed by the Apollo 16 mission is the only UV telescope that operated on the surface of the Moon till now (at time of writing). It had an FOV of 20 degrees and a resolution of 2–4 arcmin (Brosch 2009). It had low sensitivity and could only see stars brighter than $V = 11$ magnitude but still obtained the first FUV atlas of the Large Magellanic Cloud (LMC), as well as of several fields at low and high galactic latitudes (Page and Carruthers 1978; Carruthers and Page 1984). It also produced the first ever images of the Earth in FUV (Fig. 2).

Several new missions are now planned and some have already been carried out, e.g. the Chinese Chang'e 3 mission launched in December 2013, with lander and rover having already survived for several lunar days. The lander is

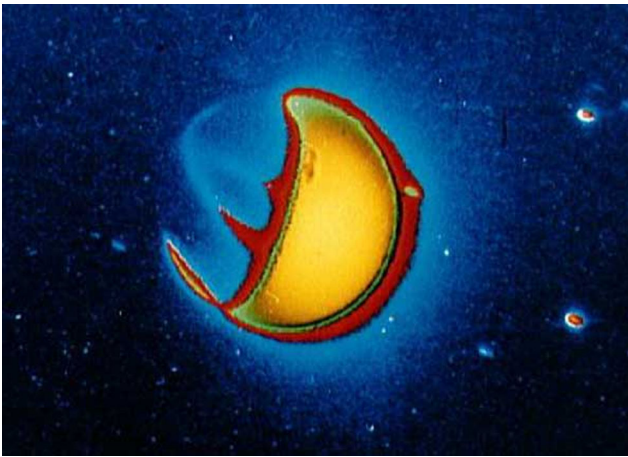


Fig. 2 The S201-experiment 10-min exposure photograph in false colours to enhance differences in the brightness of the oxygen glow at different layers of atmosphere. For this photograph hydrogen emission was blocked so that only oxygen and nitrogen emissions were recorded. Oxygen atoms fluoresce under the solar UV radiation, and maximum concentration is shown in golden closest to the Earth's surface. As it reduces with altitude, the colours become green and finally blue. On the Earth's night side the gas shows blue in two intersecting arcs over the equator—the so-called equatorial FUV arcs (Hicks and Chubb 1970). In the South the polar aurora is seen. The photographic number of the original black&white UV camera photograph is AS16-123-19657. Source: NASA

equipped with a near-UV telescope (LUT) and 15°-wide Extreme Ultraviolet camera (EUVC) to study Earth's plasmasphere (Cao et al. 2011). The lander's panoramic cameras and the EUVC have returned the first optical and UV images of the Earth from the Moon's surface in 4 decades. The Lunar UV-Telescope also completed commissioning operations and is expected to perform science operations throughout the lander's projected one-year mission, looking at bright astronomical objects, including galaxies, active galactic nuclei (AGN) and bright stars.

2.3 New opportunities

It is quite possible that very soon a floodgate of lunar missions will open—the unprecedented opportunities for intensive missions for astronomy on/from the Moon due to the surge in privately funded space exploration and through the newly-developing partnership between private companies and governments renewed the concept of the Moon as the next place to go. Year 2013 witnessed two successful missions, NASA's orbiter LADDEE to study lunar atmosphere, and a China's Chang'e-3 lander—a partnership between China and the International Lunar Observatory Association (ILOA). Several GLXP competition teams could land on Moon in 2015, and India, Russia and USA planned missions before 2020, with UK, ESA and South Korea to follow after 2020.

A report on a market study by a London Economics commissioned by the X Prize Foundation estimated that commercial opportunities on the Moon will be worth billions of dollars in the next few decades (Barton et al. 2013). One of the private companies, Moon Express, is planning to perform astronomical observations from the Moon, developing an International Lunar Observatory with a 2-kg optical instrument (ILO-X) to fly aboard Moon Express mission as part of the GLXP competition, which will be a precursor to a permanent lunar radio observatory ILO-1, a 2-m rigid dish antenna, scheduled for 2018.

It doesn't stop at the Moon—a new space race seems to have started, a race between governmental agencies and private firms, and it is may be that the firms will lead. The prospecting of deep-space resources have required till now an expensive technology with funds available only to developed nations' governments, but are quickly becoming cheap enough for a private industry or a corporation. The best example is the Google Lunar X PRIZE endeavour.

Moreover, a flood of private space-exploratory proposals is coming, and they do provide space for science as well. Take, for example, Planetary Resources, Inc., a company founded in 2009 by Eric C. Anderson and Peter H. Diamandis. The primary business of Planetary Resources is defined as prospecting and mining asteroids with high concentrations of water and precious metals, but they are also collaborating with NASA in detecting and tracking NEOs, and readying to launch the Arkyd 100 as the first private low-cost space telescope, with follow-up of several more Arkyd 200s (Lewicki et al. 2013). Deep Space Industries is preparing a series of low-cost robotic fly-by and rendezvous spacecrafts, based on cubesat technologies, to gather data on small PHA-type asteroids (Gump 2013). They currently contemplate a round-trip craft that will be able to return 25 to 50 kg of samples to near-Earth space, or even directly to Earth.

Not only industries are involved: the nonprofit charitable organization B612 Foundation is building an IR imaging space telescope *Sentinel* to launch in 2018 into a Venus-like orbit for NEO cataloging, with a proposed mission lifetime of more than 6 years (Lu et al. 2013). We live in exciting times indeed and hope that there will be a market for niche scientific payloads in these missions!

3 Moon's orbital dynamics—motion of the lunar sky

Because of the constraints of time and the available platform, we will not have 3-axis pointing freedom for LUCI. Therefore we have to understand the motion of the lunar sky and how our initial orientation determines which sources we will be able to observe. The motion of the lunar sky is a result of three major movements: the Moon's axial rotation, its revolution around the Earth and the Moon-Earth's system

revolution around the Sun. There are additional minor contributors, such as the ellipticity of the lunar orbit around the Earth and its variation, inclination of the lunar orbit to the ecliptic, the regression of the lunar nodes with the 18.6 yrs period, precession of apsides (8.85 yrs), the precession of the lunar rotational axis to the ecliptic with the period of 18.6 yrs, and the motion in space together with the Sun, most of which, however, are only important for long-term missions.

Ellipticity The Moon's orbit around the Earth is slightly elliptical with an average eccentricity of $e = 0.05$, which in addition varies from 0.04 to 0.07 with a period of 8.9 years. The main observational result of this is the $\sim 5\%$ variation in the size of the Earth as seen from the Moon, from 1.8° in aposelene to 2.0° in periselene.

Tidal locking The Moon is tidally locked with the Earth, its sidereal day ($27\frac{1}{3}$ terrestrial days) is equal to the period of its revolution around the Earth. The axis of rotation is nearly perpendicular to the orbital plane at $88^\circ 28'$. A solar day on the Moon is slightly longer than a sidereal day and is equal to the synodic month, $29\frac{1}{2}$ terrestrial days and, since the tilt of the lunar axis to its solar orbit is nearly 0° , the Sun traces the same path through the lunar sky all year. However, due to libration, the Earth, as seen from the Moon, will continuously shift its position on the lunar sky.

Libration The sky from the Moon experiences libration both in latitude and in longitude which cause celestial sources to shift their coordinate positions on the sky. Librations in longitude are due to the non-uniform motion of the Moon along its orbit; the maximal value reaches $7^\circ 45'$. Librations in latitude are due to the $\sim 6.7^\circ$ tilt of the lunar axis to its orbit around the Earth and have a range of $\pm 7^\circ 41'$. The main observational result is that the Earth traces an approximate oval $\sim 18^\circ$ diameter on the lunar sky in one month.

Length of the day and night—illumination, temperatures The solar day on the Moon lasts nearly one terrestrial month, and day and night about two terrestrial weeks each. Due to power constraints (Sect. 4.3), we can only observe during the lunar daytime, which still gives us nearly two weeks of continuous observations, although the Sun has to be avoided. In the case of zenith pointing, the Sun will be always more than 40° away from the pointing direction. In case we have the orientation freedom, we will take care to choose pointings that are a minimum of 40° away from the Sun. Scattering of sunlight from the lunar surface is less of a problem because of the low albedo of the lunar surface in the UV (at least three times lower than the Earth's) and the solar flux in the FUV spectral range is strongly reduced. Note that our spectral range has been chosen specifically to be solar-blind.

At night on the Moon, the temperature of a radiatively cooled structure goes down to 60 K; we however are not planning to operate at night because there will be no power. During the daytime, the subsolar point can reach $T \sim 350$ K, with an average of ~ 200 K. However, thermal stresses in the telescope would be much reduced compared to a space telescope as the Sun moves slowly on the lunar sky, and the illumination is more or less uniform across the telescope structure, whereas a space telescope is subject to a large temperature gradient. The lunar environment is thus strongly favoured if we would be to provide suitable shielding. For discussion on the topic of shielding, see Sect. 4.3.

Scanning transit rate—the possibility of deep exposures Due to the long synodic month, the motion of the lunar sky is slow and the angular transit of an object on the horizon is $0.53''/s$, instead of $15''/s$ on the Earth. Other intrinsic motions result in maximal gradients of $0.023''/1000$ s in RA and $0.0096''/1000$ s in Dec, much less than proposed pixel size (see Table 1). It is therefore possible to obtain deep exposures during a single transit: a point source will cross a 3° FOV in ~ 5.7 hrs. Since the UV window planned for LUCI is not reachable on ground based telescopes, it makes LUCI a unique instrument in this wavelength range. A typical sampling is $\sim 5.3''/\text{pixel}$ with a total field of view of 3 degrees.

Horizontal coordinate system The combination of all lunar motions cause dramatic changes in the positions of the celestial sources in the lunar sky. Usage of the equatorial coordinate system in description of the positions of the celestial sources is much more difficult than on Earth, therefore, we will use the lunar horizontal coordinate system with horizontal coordinates azimuth A_L , altitude h_L and the lunar hour angle θ_L . However, all the formulae relating lunar A_L, h_L, θ_L to the lunar equatorial coordinates of a celestial source have the same form as on Earth. We will transform the known celestial coordinates of program sources into the lunar horizontal coordinates for a given lunar sidereal time at the selenographic coordinates of the lander.

4 LUCI—an FUV wide-field imager from a lunar platform

4.1 Optical design, mirrors and structure

The LUCI instrument is a 30-cm Ritchey-Chrétien-based (Fig. 3) telescope with a photon-counting detector. Ritchey-Chrétien telescopes are well-suited for wide-field imaging in a compact package; the overall dimensions of the telescope are $\sim 40 \times 65$ cm. With the use of a carbon-fiber structures, a 30-cm primary mirror will weigh around 1.5 kg. We have designed for a 3 degrees field of view with a pixel size of $16\ \mu\text{m} \times 22\ \mu\text{m}$, such that we can reach a limiting magnitude of 21 magnitude (STMAG) in 1000 s.

Table 1 LUCI Instrument Overview and Projected Performance

| LUCI Instrument Overview | |
|-----------------------------------|---|
| Optical module (OM) | |
| Aperture | 30 cm |
| Optical design | Ritchey-Chrétien |
| Focal length | 945 mm, F#3.15 |
| FOV | 3° |
| Mirrors coating | AlMgF ₂ |
| Geometric collecting area | ~607 cm ² |
| Passband | 130–180 nm |
| Primary mirror | 30 cm dia, mass 1.3 kg |
| Secondary mirror | 9 cm dia, mass ~0.5 kg |
| Supporting structure | mass ~2 kg |
| Total weight | ~4 kg |
| Detector module | |
| Detector | Sealed-tube 2-stack MCP with XS anodes |
| Detector window | MgF ₂ |
| Detector photocathode | CsI opaque (Option: GaN semi-transparent) |
| Detector size | 33 mm × 44 mm |
| Pixel size | 16 μm × 22 μm |
| Total size in pixels | 2048 × 2048 |
| Detector QE | CsI: 5–30 % (GaN: tbd) |
| Detector dynamic range | 300,000 cts/s |
| Detector power | <10 W |
| Dimensions (cm) | 21 × 17 × 10 |
| Total weight (incl. FEE and HVPS) | ≤3.5 kg |
| Projected performance | |
| Resolution | ~16'' |
| Pixel scale | 5.3''/px |
| Time resolution (nominal) | few ns |
| Sensitivity (point source) | 21 ^m monochromatic in 5,000 s |
| Exposure time [†] | 10,800 × sin(Alt.) |
| Total LUCI weight | ~7–8 kg |

[†]The exposure time on a single object can be expressed as $10,800 \sin \psi$ s, where ψ is the altitude (this is the time it takes a point source to cross the centre of a 3° FOV). The total area covered during one lunar day is $178^\circ \sin \psi$, which gives $102^\circ \times 3^\circ$ at 35° from horizon

4.2 Detector

The detector is a microchannel plate (MCP)-based single-photon counting detector (Fig. 4). It consists of a caesium iodide (CsI) (optional gallium nitride GaN) photocathode, a chevron stack of 2 MCPs and a position sensitive cross-strip (XS) anode sealed in a detector body. MCPs are two-dimensional periodic arrays consisting of many small-diameter glass channels; the channels of 2 MCPs are tilted with respect to the surface normal to suppress ion feedback from ionized residual gas. When a photon hits the cathode, an electron is released and is accelerated towards the MCP

stack across a voltage gap of about 200 V. Each photoelectron produces secondary electrons by striking the channel walls of the MCPs resulting in an avalanche of electrons leaving the MCP stack at the bottom. A unique feature of an MCP electron amplifier is to provide high gains in excess of $\sim 10^5$ – 10^6 electrons per event while preserving the location within a single pore. Detectors requiring single event-counting capabilities utilize readout methods in which the electron cloud from the MCP is sampled by the anode and the charge information is processed by the front-end electronics (FEE) to determine the position where the original photon hit the detector and the photon arrival time.

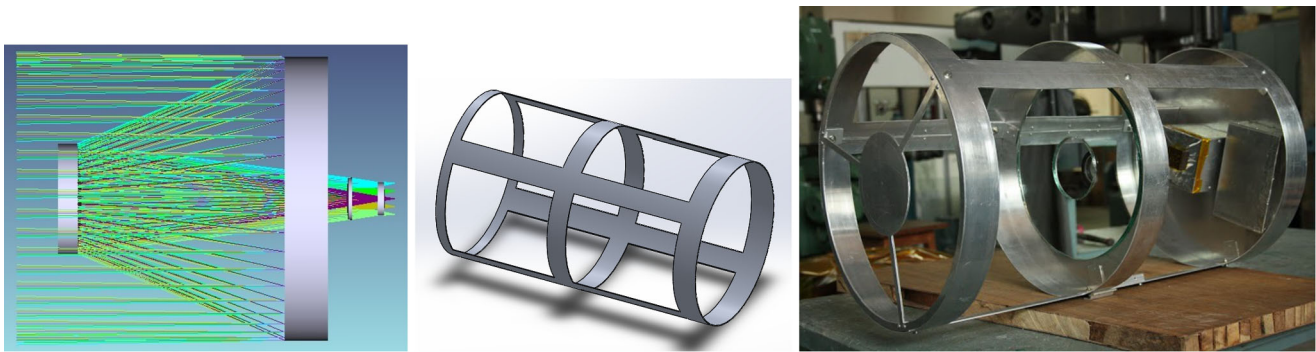


Fig. 3 *Left:* The optical layout of LUCI telescope performed using the optical design software *Zemax*. *Middle:* The mechanical and structural design of the telescope performed with *Solidworks* (mechanical design software). *Right:* A photograph of the weight and volume model of LUCI

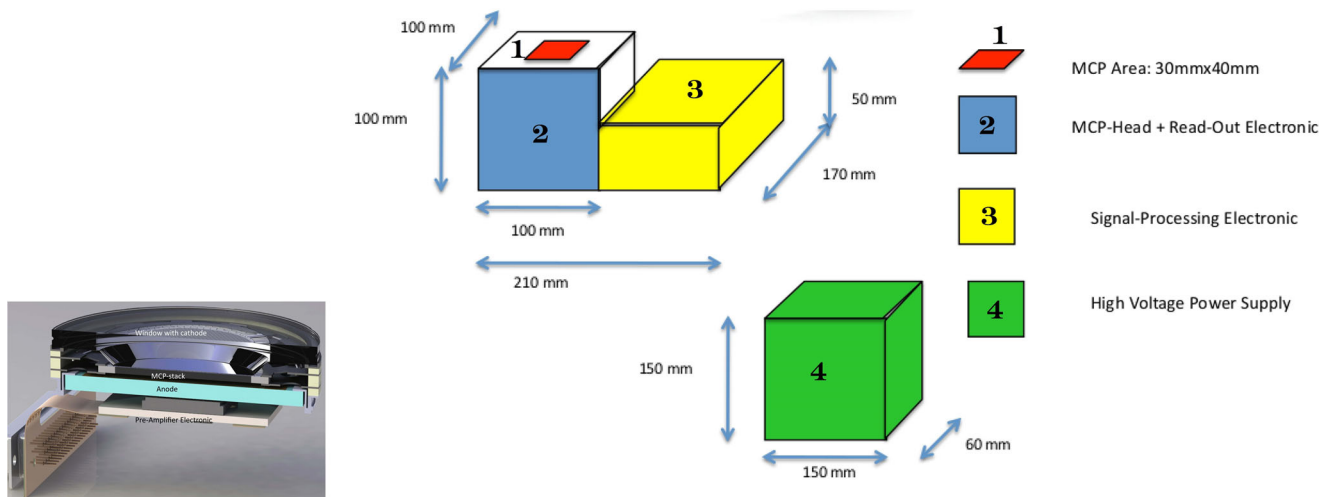


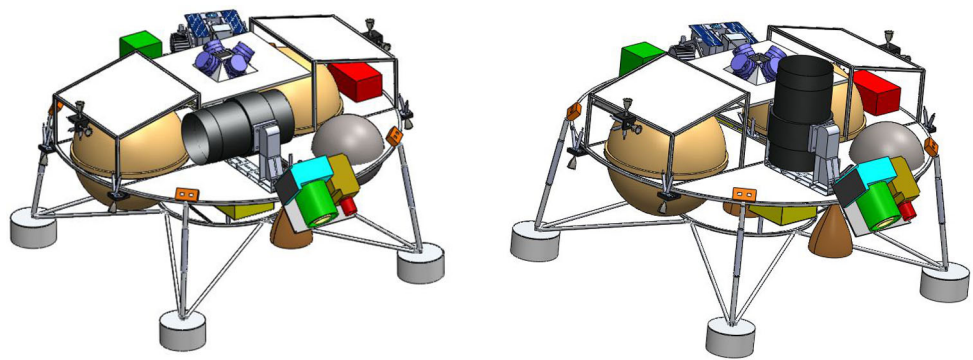
Fig. 4 Cross-strip anode based detector. *Left:* A detector head with the preamplifier section but without the “evaluation electronics” and high voltage power supply (HVPS). *Right:* Overall layout of the electronics module with dimensions. 1—MCP area. Box 2—the MCP head

with the read-out electronics. The Signal-Processing Electronic module (SPEM, box 3) can be placed beside or below the MCP-Head. Position of the HVPS (box 4) as per requirements of the lander is below the SPEM

The XS anode technique utilizes two orthogonal direction planes of parallel strips/wires that serve to detect X and Y positions. The XS anode works by dividing the charge rather than using a signal propagation time-delay, which give the capability of higher spatial resolution and a faster event-processing speed. The two axes layers (X and Y strips) collect an equal amount of charge from the MCP. The electron cloud from the MCP is collected on several strips (approximately five) on each axis which allows an accurate determination of the centroid of the event. Each strip of the anode is connected to an amplifier and then to an analog-to-digital converter (ADC), outside the vacuum, to read out the charge on individual strips. An advantage of an XS anode technique is good spatial resolution ($<10\ \mu\text{m}$ FWHM) with a smaller MCP signal; it only requires two MCPs to achieve efficient gain (10^5 – 10^6 electrons). The detector also has a very fast signal propagation of $\sim 1\ \text{ns}$.

A chevron stack of MCPs with 40-mm active diameter, 80:1 L/D, 10° -biased microchannels with $10\ \mu\text{m}$ pores on $12\ \mu\text{m}$ centers, is used in LUCI detector head. The XS-anode has an active area of $33 \times 44\ \text{mm}^2$ with 64×64 strips. Each active set has 64 strips separated by an insulating layer. The strips of the two active sets are perpendicularly aligned. Due to the insulating layer and the spacing between the strips, the sensitive area is around 62 % of the total area. These two orthogonal strips share (roughly equally) the charge generated by the MCP stack placed $\sim 2\ \text{mm}$ above it. The analog signal streams provided by a special pre-amplifier chip (which receives the anode signals), are digitized by four analog-to-digital converters, which are part of the FEE. Digital event information is processed in a field-programmable gate array, which calculates the location where the original photon hit the detector, the total charge of the event, and a time stamp for the event (maximum 300,000 photons/second).

Fig. 5 *Left*: The preliminary design of the lander and placement and deployment of LUCI (black cylinder); *Left*: stowed position, *Right* default operation position. Courtesy of the Team Indus



The weight of the entire detector system (detector head, electronics and HVPS) is around 3 kg and the power consumption is less than 10 watts. The overview of the system and the projected performance is summarized in Table 1.

This detector is developed by the Institute of Astronomy and Astrophysics of the University of Tübingen, Germany (Kappelmann et al. 2006). The development has the heritage of two successful ORFEUS-SPAS “free-flyer” missions (Diebold et al. 2012) and will be space-qualified onboard the next German TET-satellite (technology test-bed satellite). In the advanced design phase we will study the necessity of processing the event stream into images, so as to reduce the required downlink telemetry volume.

4.3 Delivery and platform

The total weight of the complete instrument has to be 7–8 kg due to the mass restrictions imposed by the carrier. The telescope will be mounted on the upper deck of the lander (Fig. 5) and may have the pitch angle freedom of rotation, with zenith angle range of $+30^\circ$ to -30° due the constraints explained in Sect. 5.3.

Power and telemetry The required power for the detector will be provided by the platform where solar panels are the primary source of electrical energy during lunar day surface operations, therefore LUCI will only operate in the daytime. The HVPS will be used for the required high voltage for the detector and the input to the power supply will be a standard logic voltage. The operational power requirement for the detector is less than 10 watt.

The platform will provide a shared downlink data telemetry in addition to a limited command uplink facility; the total available datalink budget on the platform is 200 Kbps downlink and 100 bps uplink. We will use the uplink to readjust the observational plans in case the lander misses the programmed location and position.

Storage and deployment of the telescope The telescope will remain in a stowed horizontal position for the entire duration of the flight from launch to touchdown, protected

from mechanical shocks, radiation and sunlight amongst other environmental conditions during transit by the housing provided by the platform (Fig. 5, *Left*).

The telescope’s operations will begin after the touchdown and release of the rover. The initial deployment will be at a pitch angle of $+90^\circ$ to assist in the attitude verification of the lander (Fig. 5, *Right*).

Since LUCI is planned to be mostly contained within the lander, we will need only minimal thermal blankets, since the platform will take care of most of the insulation, and the situation is similar for the radiation shielding. The aperture will be well baffled to avoid reflections and scattering from the outer surfaces of the lander. In order to ensure the survival over the lunar night, the telescope will be lowered back into its storage bay and the detector will be switched off. The platform will have a minimal battery power to provide the heater.

Dust There has been considerable interest in lunar dust—produced from micrometeorite impacts and electrostatically charged by solar photons—with the LADEE spacecraft designed to study its characteristics. Dust raised by the lander may rise to considerable heights and settle back down on the LUCI mirrors. We expect only a limited impact from this dust, however, as the motion of the dust is largely across the terminator (Berg et al. 1974) with illuminated surfaces likely to be covered and cleaned by the same process. In fact, the Lunar Laser Ranging (LRR) reflectors left by the Apollo astronauts are still working after more than 40 yrs albeit with 25 % efficiency (Lester 2007). They were neither shielded from direct sunlight nor from dust. The baseline LUCI’s operation is no more than a few months and we do not expect dust accumulation on the mirrors to be a problem. Moreover, the dust levitated by the landing itself is not likely to settle on the LUCI optics since at landing the telescope will be in the stowed position in the storage bay.

4.4 Bandwidth, resolution, sensitivity

The LUCI instrument requires high-sensitivity imaging in the FUV but requires the rejection of longer wavelengths. In

addition, we require the blocking of wavelengths shortward of 127 nm to cut off the Ly- α (121.6 nm) line. We are not using filters in LUCI, thus the cut-offs are provided by the detector and the optics. To meet the demands for the bandpass, the detector has a magnesium fluoride (MgF₂) window and a CsI photocathode. CsI provides good responsivity in all UV region and is solar blind with 180 nm cut-off on the long side. We plan using CaF₂ corrector lenses which will block light below 135 nm.

A typical sampling of $\sim 5.3''/\text{pixel}$ with a total field of view of 3 degrees yields the spatial resolution of about $16''$.

4.5 Calibration

4.5.1 Ground calibration

The ground calibration of the LUCI instrument will be performed at the M.G.K. Menon Space Science Centre at the CREST campus of the Indian Institute of Astrophysics, Bangalore, India. This facility is now being used for the integration, characterization and calibration of the UVIT instrument (Kumar et al. 2012). The telescope assembly and alignment will be performed in class 1000 clean rooms with laminar flow tables providing a class 100 or better local environment. Procedures will be adapted from the UVIT calibration and, where possible, equipment from the UVIT program will be used.

4.5.2 Astrometric calibration

The astrometric calibration of LUCI will begin with the absolute localization of the lander, which is described by its location in selenographic coordinates λ and ϕ , latitude and longitude, respectively, and the position, determined by the 3-axis attitude: pitch, roll and yaw angles. The yaw angle is defined as the LUCI pointing. The lander will be equipped with inclinometers to determine its pitch and roll angles. In addition to six Sun sensors that will provide the location of the Sun, we will use LUCI to determine the offset of the lander's zenith from the 'true' zenith by beginning observations at the pitch angle of 90° . The lander will have a precise on-board time clock and Moon orbital information, which together with the positions of the Sun and the Earth (determined by the Earth antenna) will provide the value of the yaw angle, i.e. the LUCI azimuthal pointing. The programmed LUCI pointing is $Az = 130^\circ$ at programmed landing site of $\lambda = +38.336^\circ$, $\phi = 26.006^\circ\text{W}$. In case of missing the programmed localization, we will update the observational plan by uplink from the Earth.

4.5.3 Photometric calibration

The primary photometric calibration of LUCI will be made with reference to a set of well-studied hot, young and/or

massive stars, including bright *O*, *B* and hot white dwarfs (WDs) as was done for the UV instruments onboard the HST. These stars are photometrically stable, their fluxes are well matched to the sensitivities of modern space instrumentation and their spectral energy distributions (SED) are well characterized. The FUV fluxes of these stars are presently known to better than 10 %. The standards will be observed as they transit across the LUCI FOV.

For the definition of LUCI photometric system, we will use the AB magnitude system that is widely used in UV astronomy (Oke and Gunn 1983)

$$m_{\text{LUCI}} = -2.5 \log \bar{F}_v - 48.6, \quad (1)$$

where \bar{F}_v is averaged monochromatic flux (in ergs/s/cm²/Hz) at the effective wavelength (averaged across the bandpass),

$$\bar{F}_v = \frac{\int_{\lambda_1}^{\lambda_2} f_v(\lambda) R(\lambda) d\lambda}{\int_{\lambda_1}^{\lambda_2} R(\lambda) d\lambda}, \quad (2)$$

where $R(\lambda)$ is the total system's response, f_v is the SED of a source, and λ_1 and λ_2 are the lower and upper wavelength limits of LUCI's bandpass. However, since LUCI is a photon counting device, the real units of LUCI are photon counts per sec, that can be converted accordingly to flux units or magnitudes using

$$\text{Counts/s}/\text{\AA} = F(\text{ph/cm}^2/\text{s}/\text{\AA}) \times A_{\text{eff}}, \quad (3)$$

where F is source flux and A_{eff} is the total effective area in cm²—the product of the mirror geometric collecting area (A_{coll}), detector quantum efficiency (Q.E.), and the optics efficiency which includes reflectivity of mirrors, absorption by the correcting lenses and absorption by the metering structures ('spiders') holding the secondary mirrors,

$$A_{\text{eff}} = A_{\text{coll}} \times \text{Detector Q.E.} \times \text{Optics Efficiency}. \quad (4)$$

The effective area A_{eff} of LUCI will be determined through the ground calibration tests.

5 Scientific objectives

We have identified several science areas where the imaging far-UV observations from the Moon can deliver unique scientific results. However, it should be noted that, in many ways, this is a pioneering experiment, part of a new way of doing astronomy. The cost of going to space is decreasing rapidly and there may be many opportunities for serendipitous science; perhaps as suitcases on flights of Virgin Galactic⁶ or as nano-satellites based on the cubesat for-

⁶Virgin Galactic is a company within Richard Branson's Virgin Group which plans to provide commercial space flights.

mat (Brosch et al. 2014). This particular opportunity takes advantage of the Team Indus effort to send a rover to the Moon. We have carefully selected a set of science objectives and instrumentation suited for this first opportunity. However, as more and more such flights occur, we expect that astronomers (and other scientists) will be able to take advantage of a diverse set of missions to perform unique science.

5.1 Advantages of FUV

The FUV sky is relatively dark and is dominated by a small number of discrete UV sources such as hot stars, particularly *O* and *B* stars, hot WDs and subdwarfs, AGN and star-forming galaxies.

A very important advantage of a lunar FUV telescope with a wavelength range limited to 135–180 nm and the use of a CsI cathode is the absence of several noise contributors which are intrinsic to telescopes at longer spectral regions in LEO:

1. Zodiacal light—sunlight scattered by interplanetary dust contributes significantly at wavelengths longward of 200 nm, where the solar flux rises rapidly and practically negligible in the FUV range.
2. Airglow—line emission from the Earth's upper atmosphere bright throughout the UV range (see Fig. 2) and is an important background contributor for LEO missions (Murthy 2014).
3. Instrument background—the dark count in UV instruments due to fast particles hitting the MCP. Though typically low, it varies throughout the orbit for LEO spacecrafts, rising in areas of high particle count, such as the South Atlantic Anomaly or the polar regions. On the Moon, Galactic cosmic rays and solar wind particles are the main sources of radiation. Their flux, however, is about half of that in deep space due to self-blocking by the Moon (Adams et al. 2007).
4. Spacecraft jitter—a lunar platform is very stable, thus one more advantage in comparison with the space-based telescope.

5.2 Astronomy in the far-UV domain

When discussing astronomy in the FUV domain, one has to consider first what are the sources expected to emit significant amount of radiation in this spectral region. In general, sources will produce either continuum radiation or discrete emission lines. The continuum can either be from a blackbody (BB) or almost a black-body (such as a star or a population of stars), or from a non-thermal source (NTS), such as synchrotron emission from electrons in a magnetic field.

A BB is characterized by its effective temperature. In order to produce a significant flux in the LUCI bandpass,

a stellar source has to be 3–4 times hotter than the Sun, 18000 to 24000 K, corresponding to early-*B* or *O*-type stars. Note also that late-*B* and even *A*-type stars or hotter may be detected, provided they are relatively nearby. Stellar radiation may be “blue-shifted” and become more UV-dominated if it is scattered by small dust particles. This is the inverse of interstellar reddening and can be seen in the vicinity of hot stars that are associated with dust as reflection nebulae. A good example of a reflection nebula is NGC 1435 near 23 Tau, the Merope star in the Pleiades, with its brightest knot IC 349 (Herbig 1996; Herbig and Simon 2001).

Just like single stars, entire galaxies can significantly contribute to the FUV continuum radiation, provided their stellar population contains large numbers of *O* and early-*B* stars. Since these stars are massive, $10 M_{\odot}$ or more, they are also short-lived. The FUV is, therefore, a good indicator of very recent star formation. By “counting” the FUV photons one can, therefore, account for the massive and short-lived stars in an extended source, revealing a very recent star formation burst.

Extended extragalactic FUV sources are often produced from the interaction of galaxies with the intra-cluster medium in clusters of galaxies. Examples of such phenomena are in the Virgo Cluster (NGC 4330; Abramson et al. 2011), and in the Coma cluster (Smith et al. 2010). However, in some cases extended emission is produced by star formation away from the main body of a galaxy. Examples for this are the UV filaments detected near brightest cluster galaxies (Oonk et al. 2011) and the extended UV disks of some galaxies (e.g. Thilker et al. 2007).

In the Solar System, the expected FUV sources are the Lyman α halos around planets produced by resonant scattering of the solar radiation, which however are outside the proposed LUCI band, and aurorae and airglow in the atmospheres of planets and major satellites. A few FUV observations of comets were made by GALEX (e.g. Morgenthaler et al. 2011), where the emission is dominated by the CI emission bands excited by the solar radiation and wind.

5.3 Lunar sky and modes of observation

As shown in Sect. 3, a stationary telescope on the Moon scans the sky and over a period of one lunar day approximately 44 deg^2 of the sky can be observed. The baseline operation is with the zenithal orientation of LUCI (the ecliptic is always at $\sim 40^\circ$ from zenith), however, we will be able to change the pitch angle between 0 (horizon) and 90 (zenith) degrees.

Observations will be performed using the altitude/azimuth (Alt/Az) coordinate system. The celestial coordinates of the object will be converted to the attitude of the telescope pointing, i.e. the azimuth and the altitude angle of an

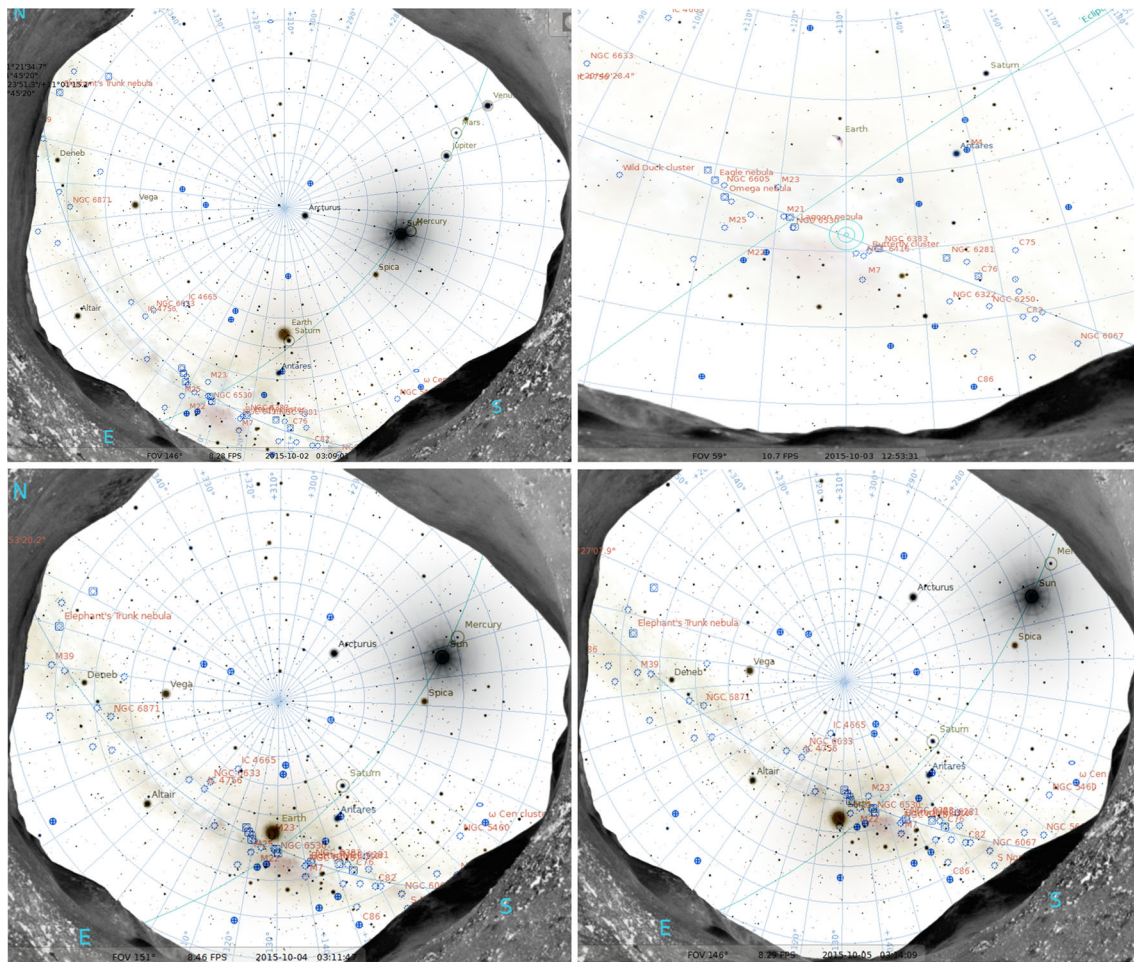


Fig. 6 View of objects in the lunar sky on first few days of LUCI's operations with simulated lunar terrain. The grid is the horizontal coordinate system (Az/Alt), with zenith in the centre. *Top left*: 02 Oct. 2015, 03 hrs; *Top right*: 03 Oct. 2015 13:00 hrs, map is centred on the

Galactic centre (*blue circle* at $\sim 32^\circ$ elevation; Earth is above at $\sim 43^\circ$) crossing the 130° azimuth line. *Bottom left*: 04 Oct. 2015 noon; *Bottom right*: 05 Oct. 2015, 03 hrs. The *green line* is the ecliptic and the *blue line* is the Galactic plane

object on the lunar sky. At low altitudes, star motions are no longer tangential and thus the tracks have a small curvature. To avoid this problem we will be pointing the telescope at a typical altitude angle of more than 30° . Pointing above this angle also removes the problem of the lunar “horizon glow”—a reported scattering of sunlight by lunar dust “atmosphere” (Murphy and Vondrak 1993).

The proposed landing site is at Mare Imbrium/Sinus Iridum at selenographic coordinates 38.336°N and 26.006°W . The accuracy of the landing is about 100 km. We have generated maps of the lunar sky for the months of October 2015—December 2015 using the *Stellarium* software. In case the lander can orient before the actual landing to a pre-determined direction, we select the azimuthal angle of $+130^\circ$. At this orientation, the Earth crosses the 130° azimuth line (see Fig. 6, *Top right*) and we will be able to observe it. Earth is bright in the FUV, in particular, the geocorona extends to $\sim 80,000$ km emitting large amount of Lyman- α photons at 121.7 nm. It would be very interesting

part to observe the Earth at different phases at small illumination (in the lunar day the Earth is never in the full phase) in the UV range outside the Lyman- α contribution. Since the worst case scenario is that LUCI would not survive the first lunar night, we plan to observe important targets in the first month: calibration objects, Galactic plane, Earth—we provide detailed maps of the first months as online source and maps for the first few days in Fig. 6. For example, on 02/10/2015 Earth is at Az/Alt: $\sim 129^\circ/44^\circ$ at 20 % illumination. On 03/10/2015 at 13:00 hrs, the Galactic Centre is at Az/Alt: $\sim 130^\circ/32^\circ$ and Earth is at Az/Alt: $128^\circ/44^\circ$ at 34 % illumination. On 04/10/2015 at 02:00 hrs, the intersection of the Galactic plane with the ecliptic crossing the 130° azimuth at 39° elevation. All times are India Standard Time (IST), which is UTC +5.5 hours.

The importance of properly accounting, if not of eliminating, the diffuse backgrounds when dealing with extragalactic observations was stressed by Mattila (2006). Scattered light due to dust clouds on the Moon can play the role

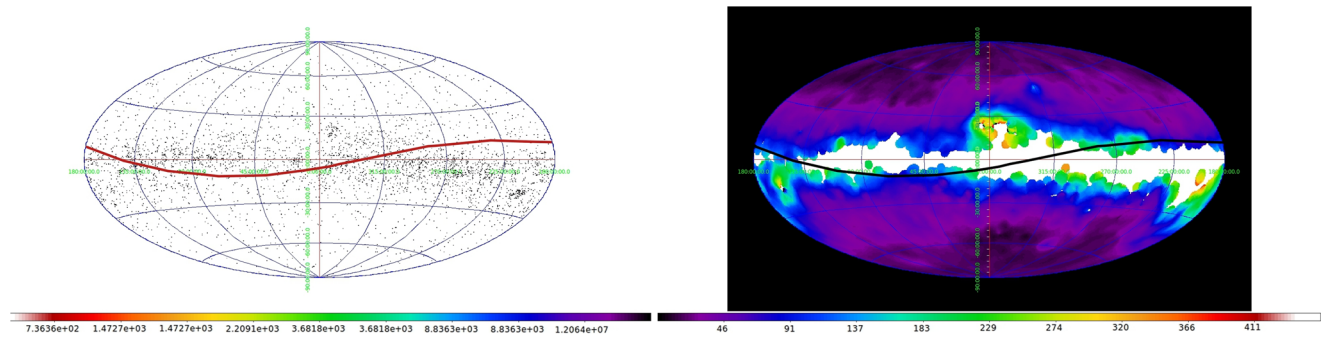


Fig. 7 Simulations of the sky background for October 2015 in FUV in a projected bandwidth of LUCI: stars and diffuse Galactic light (*top* and *bottom* panels, respectively). Since no GALEX data is available for the regions in and around the Galactic plane, we use a cosecant law to simulate the diffuse background in these regions. The

solid line is the local horizon—only the sky above this line is visible to LUCI in October 2015. The following ASTUS inputs were used: dark current = 0 cps, field of view = 3° , AITOFF projection, pixel size = 0.005°

Table 2 Diffuse background (b/g) and stellar light levels in counts/s in the fields of possible photometric and astrometric calibration targets for LUCI

| Phot. Standard | m_V | Sp. type | Diff. b/g | Stars |
|----------------|-----------------|--------------|-----------|---------|
| HD 60753 | 6.7 | B3IV | 15262.9 | 1859.2 |
| HD 49798 | 8.3 | O6 | 12854.1 | 2734.6 |
| HR 1996 | 5.17 | O9V | 2005.3 | 11777.1 |
| Open Cluster | Dim v^\dagger | No. of stars | | |
| Feigelson1 | 18 | 10 | 5963.87 | 37828.5 |
| ASCC 51 | 48 | 18 | 7902.4 | 45231.7 |

† Apparent dimension in V in arcminutes

of a sky background but the choice of the FUV range removes this problem. We have simulated the far-UV background with LUCI's parameters using the UV sky background simulator ASTUS⁷ (Safonova et al. 2013). In Fig. 7, we display the results of all-sky simulation for the month of October 2015 in a projected bandwidth of LUCI assuming a flat step filter profile for two separate components of the background: stars and diffuse Galactic light (top and bottom panels, respectively). The thick solid line marks the local horizon; only the sky above the line is observable in October. For example, we can observe the Galactic plane, but not the Magellanic Clouds. We have also calculated the count levels (diffuse Galactic + stars) for a few open clusters that can be used for astrometric calibration. Astrometric calibration includes pointing accuracy estimation, FOV calibration, distortion correction, etc. For these purposes, extended fields containing many stars with good astrometry, such as open clusters, are generally used. Zodiacal light is usually nearly negligible in FUV, therefore we did not consider it in these simulations. The background levels produced by diffuse light and stars in the fields of possible calibration targets in counts/s over the full FOV are given in Table 2. ASTUS

uses Hipparcos catalog for modelling of stars, which however, does not contain white dwarfs.

6 Primary science goals

6.1 Solar System bodies in UV

6.1.1 Earth in FUV

The historical image of the Earth in the FUV (Fig. 2) made by the Apollo 16 team 40 years ago is still interesting in terms of a possibility to study/monitor the Earth's upper atmosphere that could benefit communications and help measure long-term effects of air pollution. It also shows the occultations of stars by the Earth's atmosphere—another interesting possibility to consider. Earth occultations can be used just like lunar occultations, e.g., analysis of lunar occultations have discovered some stars to be very close visual or spectroscopic binaries. In addition, angular diameters of stars can be measured by timing of occultations, which is useful for determining effective temperatures of those stars. The key is the time-resolved photon detection that will allow seeing stars entering the atmosphere and leaving it at the end of the event.

⁷ Available at <http://cads.iiap.res.in/tools/uvskyCalc>.

6.1.2 Near-Earth objects

“The dinosaurs became extinct because they didn’t have a space program.”, Larry Niven.

At present, there are approximately 620,000 asteroids whose orbits are known in our Solar System; this is less than 1 % of the estimated number of objects that orbit the Sun. And less than 10 % of all NEO have been discovered, according to the NASA scientist Donald Yeomans (2013).

Till now most spectral reflectance studies of asteroids and comets were done in optical and NIR, however, recent lab measurements, space missions and HST remote observations showed (Li et al. 2011) that the asteroidal UV region contains a wealth of diagnostic information, which is not yet well understood. Some asteroids have UV absorption bands and some do not. Asteroids are subject to space weathering, which is believed to reducing their optical albedo, suppressing absorption features in optical and NIR (Chapman 2004), but brightening them in the UV (Hendrix and Vilas 2006). Yet only a few scattered observations of some asteroids in the UV exist apart from some 50 IUE collected spectra in the 1980s (Li et al. 2011). In spite of the theoretical work on the UV reflectance of the meteoroids and IUE UV observations, the understanding of asteroid UV reflectance is limited due to the insufficient space and lab data (see a report on measurement of the FUV reflectance of asteroid Lutetia by *Rosetta* in Stern et al. 2011).

Apart from being a menace, near-Earth objects are important in their own right, providing information on the original environment of pre-solar nebula. They may also have played a key role in starting of life on Earth, since asteroids and comets are thought to bring to the Earth much of the water and carbon-based materials. They are rich in minerals, metals and their clays and ices could provide water resources, thus the NEOs may serve as supply and fuel stations for future space flights. It is important for human survival to continue to discover and monitor them.

Some asteroids may have even been comets once. Comets lose most of the volatiles during passages through the inner Solar System, leaving behind a dark, low-albedo nuclei. For example, asteroids 944 Hidalgo and 2201 Oljato are believed to move in an elliptical comet-like orbit (e.g., Degewij and Tedesco 1982). Asteroid 2201 Oljato also has an unusual UV reflectance, which has been interpreted as Rayleigh scattering from a coma around it (McFadden et al. 1984; Rickman 1985). The nature of their orbits and their meteor-shower associations are also in favour of this hypothesis (see Weissman et al. 2002 for extensive discussion).

6.1.3 Earth-Moon trojans

As one of the new and a more speculative proposals, we will also try to look for the Earth trojans and Moon trojans.

Trojans are asteroids that co-rotate with a planet librating around its L_4 or L_5 Lagrangian points of stability (trojan points). For example, Jupiter trojans are about as numerous as the asteroids of the asteroid belt (Yoshida and Nakamura 2005). Other planets’ trojans: Mars, Saturn, Uranus and Neptune were also discovered. Earth trojans are those that co-orbit the Sun with the Earth, librating around Earth–Sun Lagrangian points L_4 (leading 60°) and L_5 (trailing 60°). In 2011, asteroid 2010 TK7 was confirmed to be the first discovered Earth trojan. It is located in the L_4 (Connors et al. 2011). Earth trojans are difficult to detect from the ground as they are generally low in the sky, either just after the sunset or just before the sunrise, as seen from Earth. In addition to planetary trojans, there can be moon trojans, which are small bodies residing at the trojan point of a planetary moon. For example, Saturnian moons Dione and Tethys have trojan asteroids, two each. Though Saturnian moons are much smaller than the Earth’s Moon (their masses are $1/10^4$ of the Earth’s), no Moon’s trojans were discovered. Looking at the trojan points from the Moon is an interesting opportunity to detect these elusive asteroids.

6.2 UV transient sky

Astrophysical transient events include bursts, flashes, flares, SNe, gamma-ray bursts (GRB), etc. The rate of discoveries of variable objects is constantly increasing with larger telescopes and newer techniques coming on line, for example, the Palomar Transient Factory (PTF) alone discovers up to 12 SNe per night. The last decade has been the witness to the importance of the UV space missions in detecting transients in UV with GALEX discovery of UV flares from flare stars and from disruption of a star by a supermassive black hole (SMBH). Both *SWIFT* and GALEX have been yielding impressive results (e.g. Botticella et al. 2010; Rabinak and Waxman 2011). In fact, the discovery rate of UV transients could only increase by several orders of magnitude if a wide-field UV instrument is launched (Gezari et al. 2013).

6.2.1 SNe and GRBs

Supernovae, the result of a death of a massive star, are extremely luminous transient events that can outshine an entire galaxy before fading from view several weeks or even months later. SN shock breakout is most luminous phase of a core-collapse explosion, producing UV/X-ray burst of radiation when shock emerges at the surface of the star. SNe discovered in optical surveys are caught too late, when the UV emission is already fading rapidly. If we can catch SNe early, when the hot, thermal emission from the ejecta is bright in the UV. Schawinski et al. (2008) and Gezari et al. (2008) have found, using archival UV data from GALEX, that one supernova (SNLS-04D2dc) flared in the UV up to

seven hours before the actual explosion suggesting that the first sign of a supernova is a UV flare. They speculated that the expanding internal shock wave rapidly heated the star, shifting its emission into the UV. Given the importance of observations within the first microseconds of an explosion, this would be a valuable means of pinpointing stars about to explode.

Gamma-ray bursts (GRBs) are flashes of γ -rays associated with extremely energetic explosions in distant galaxies. They are the most luminous electromagnetic events known to occur in the Universe. Bursts can last from milliseconds to several minutes, although a typical burst lasts a few seconds. The initial burst is usually followed by a longer-lived “afterglow” emitted at longer wavelengths (X-ray, UV, optical, IR and radio). Most observed GRBs are believed to be produced by a narrow beam of intense radiation released during a supernova event, as a rapidly rotating, high-mass star collapses to form a black hole and called long-GRB. A subclass of GRBs, the short-GRBs appear to originate from a different process, possibly the merger of binary neutron stars. The progenitors of long-duration GRBs are hypothesized to be the Wolf-Rayet (WR) stars.

6.2.2 Flaring stars

A vast majority of UV short-period transients is associated with a single physical type of an astrophysical source, that is, flare eruptions of K and M stars. M dwarfs account for more than 75 % of stellar population within 1 kpc of the Sun. The subset of these stars known as flare stars possess extremely active chromospheres and coronae. The first evidence of flare activity is best observed in the UV continuum. The rise time is sharper in the late M dwarfs, a few seconds, reaching few minutes in the K or early M dwarfs. These flares exceed the quiescent state luminosity by 2 or 3 orders of magnitude. The peak temperature of the flare reaches 10^3 – 3×10^4 K, implying a UV peak with luminosities of 10^{25} – 10^{26} W. For such a flare on, say Proxima Cen, this would correspond to a flux at Earth of 10^5 – 10^6 UV photons per cm^2 for periods of several hours. The M dwarf flare 100 pc away will produce UV flux at Earth of 10 – 10^2 photons/ cm^2 .

Gezari et al. (2013) estimate the surface density of M dwarf transients as $15/\text{deg}^2/\text{yr}$, which for a ~ 7 deg^2 telescope would result in annual rate of $10^5/\text{yr}$, or 4 per lunar day. Kulkarni and Rau (2006) concluded that the fast transient (which change on timescales of an hour or less) annual rate in B band of $10^8/\text{yr}$, or three events per second, detected in the Deep Lens Survey, is entirely due to the flares from Galactic M dwarfs. Using this annual rate $R_f^{\text{dMe}} \approx 10^8/\text{yr}$, we obtain for LUCI FOV of $\Delta\Omega = 2.15 \times 10^{-3}$ sr and for $\tau \sim 5$ hrs $\approx 20,000$ s exposure, the number of detected flares

$$N_f = \frac{R_f^{\text{dMe}} \tau \Delta\Omega}{4\pi} \approx 11. \quad (5)$$

Since flaring time scales range from minutes to hours, individual flares will be observed only once during their time evolution. Therefore, each epoch of each star must be analyzed for a flare signature. However, if LUCI detects a flare in real time and there is immediate transmission, the follow-up observations from the ground can be performed at once.

There are many variable stars that are bright in the UV. For example, eclipsing binaries (EBs) with O - to late B -type stars have significant UV fluxes. Extending the wavelength baseline to the FUV vastly improves the determination of T_{eff} and ISM absorption. Another type, the WR stars, are particularly interesting as they are hypothesized to be the progenitors of long-duration GRBs. WR stars are evolved, massive, extremely hot and very luminous stars, which are losing mass rapidly through a very strong stellar wind. They are extremely rare because they are massive and thus short-lived.

6.2.3 Tidal disruption events

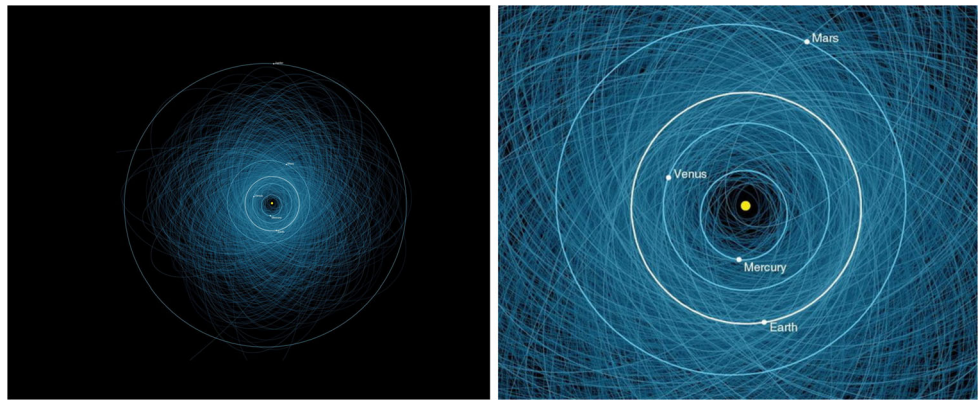
There is an increasing observational evidence for a series of UV/X-ray flares from stars getting disrupted by massive black holes, initially from a star being blown apart by an internal nuclear explosion, subsequently from the debris falling into the black hole and finally from the debris stream collision with itself (Gezari et al. 2012). An intermediate-mass black hole (IMBH) is capable of completely destroying a white dwarf (WD) that ventures too close to it, releasing up to 10^{48} ergs peaking in EUV. In fact, observations of daily high-energy flares at the Galactic centre led to a conclusion that the central SMBH disrupts asteroids larger than 10 km in size on a daily basis, producing short-duration flares with the maximum possible luminosity of the order 10^{39} erg/s (Zubovas et al. 2012), and occasionally a planet is disrupted resulting in longer and brighter flare. This was seen in the galaxy NGC 4845, where a 14–30 Jupiter-size object was disrupted by a central black hole (Nikołajuk and Walter 2013).

6.2.4 UV transients from celestial collisions

Collisions are common on all astronomical scales, from asteroids bombarding planets to massive galaxy clusters passing through each other (for ex., Jee et al. 2007). Collisions on all scales can be very energetic. Here we consider the collisions that occur in planetary systems.

Asteroidal collisions Though many PHA orbits are mapped (Fig. 8) and none are known to be on a collision course with the Earth in the next century, asteroidal collisions may change their orbits and take them off the plotted/predicted course. In addition to the deviating influence of larger planets like Jupiter, astronomers estimate that modest-sized asteroids in the main belt collide with each other about once

Fig. 8 These NASA maps show the orbits of over 1,400 known PHA, as of early 2013. Source: NASA Planetary Photojournal



a year, producing fragments that scatter and may unexpectedly crash on Earth.

Detecting asteroidal collision in progress is tricky because large impacts are rare, while small ones are faint and largely go unnoticed, therefore we detect only the aftermaths. Recently two unusual objects were discovered which initially were designated as comets due to the dust trails, P/2010 A2 (LINEAR) and P/2013 P5. The comet-like tail of P/2010 A2 was noticed by the Lincoln Near-Earth Research (LINEAR) Program Sky Survey in January 2010. Only HST's deep imaging of the nucleus revealed a point-like object with a criss-crossing dust feature, which led to a conclusion that this comet-like appearance is actually a result of an impact that happened just few weeks previously (Jewitt et al. 2010). The smaller impactor was most probably vaporized and material was stripped from the larger one. The X-like dust pattern at the head of the tail was most probably the result of an asymmetric collision and ejection of material. Both colliding asteroids were too small and would have gone undetected but for the impact, which was as powerful as a small atomic bomb (Harrington and Villard 2010). P/2010 A2 itself is consistent with membership in the Flora asteroid family, produced by collisional shattering of a parent body millions of years ago. One fragment of this family could even have been responsible for the K-T event. Another member of this family, asteroid P/2013 P5, also displays unusual 6-tail comet-like behaviour and could be a fragment from an asteroid collision that occurred roughly 200 million years ago (Jewitt et al. 2013).

Subsequently, SWIFT observed the asteroid 596 Scheila, which brightened unexpectedly in the end of 2010 after probably colliding with a much smaller asteroid (Moreno et al. 2011). 596 Scheila is approximately 113 km across and orbits the Sun in the Main Belt with a period of \sim five years. It is displaying nearly the same pattern as P/2010 A2; it was noticed just weeks after the collision, best explained by a 4.9 km/s impact by a smaller 30-m asteroid. Such asteroids are colliding with a frequency of about one in five years in the Main Belt (Bodewits et al. 2011).

Collisions in exo-planetary systems In a standard model of planetary system formation, the final stage is now strongly associated with a significant number of giant impacts on each of the young forming planets (Stern 1994). The Mars-sized terrestrial impactor, believed to be responsible for the formation of the Moon, was such an impact (Stevenson 1987; Canup and Asphaug 2001), and Mars' primitive atmosphere is believed to have been lost through a similar giant impact catastrophic event 4 Ga ago (first proposed by Hancock et al. (1998), Spexarth (2004), and suggested by data returned by the Curiosity rover, see e.g., Webster et al. 2013). Even a mature Solar Systems, like ours, experience large-scale collisions, where even planets can collide and be destroyed in the process. The latest example is of the few Gyr old star BD + 20307 (Song et al. 2005; Weinberger 2008), where excess of warm dust indicates that two terrestrial-size planets have collided and destroyed each other.

Most known exoplanets orbit solar-type stars, i.e. MS stars of *F*, *G*, *K* and *M* categories, mostly within 600 pc from our Sun (e.g. Shchekinov et al. 2013). Collision of a Jupiter planet with a terrestrial size planet results in a UV flare in 100–300 nm range that outshines at flare peak time any MS host star later than *B5* by orders of magnitude. For example, τ Ceti has 10 times more dust than our Sun. Any planet in its system would suffer from large impact events roughly ten times more frequently than the Earth (Greaves et al. 2004). At 150 nm, the UV flux from a star like τ Ceti (*G8V* type) at 10 pc is $\sim 1 \times 10^{-14}$ erg/cm²/s, while the UV flare may produce $\sim 4 \times 10^{-10}$ erg/cm²/s. The flux contrast is dramatic. If a planet (a hot Jupiter, for example) impacts a host star, the flare with the peak temperature of $\sim 10^5$ K would generate a soft X-ray flash lasting for few hours, followed by the FUV radiation for few days, with flux at Earth of 0.3 erg/cm²/s at a 10 pc distance (equivalent to $\sim 2.3 \times 10^{10}$ photons/cm²/s at 150 nm). Collisions of two hot Jupiters would produce a flare lasting for hours with peak $T \sim 2 \times 10^5$. For an event duration of 10 hours, the FUV fluence at Earth from collision at 10 pc would be $\sim 10^5$ photons/cm², while the host star itself would most

Table 3 Comparison of mission parameters in FUV channels for equivalent ideal telescopes based on Eqs. 7 and 8

| Mission parameter | GALEX | UVIT | LUCI |
|--------------------------|-------------------------|-------------------------|-------------------------|
| A (cm ²) | 1950 | 880 | 706 |
| No. of pixels | 4 K × 4 K | 512 × 512 | 2 K × 2 K |
| Pixel scale (arcsec/pix) | 1.5 | 3 | ~7 |
| FOV (deg ²) | 1.1 | 0.7 | ~7 |
| FOV (sr) | 3.35 × 10 ⁻⁴ | 2.13 × 10 ⁻⁴ | 2.15 × 10 ⁻³ |
| FUV bandpass (nm) | 40 | 50 | 50 |
| λ [†] (nm) | 151.6 | 151.4 | Assume 150.0 |
| Relative PSS | 1 | ~0.3 | 0.13 |
| S (1/cm ³) | 3.06 × 10 ⁷ | 1.34 × 10 ⁸ | 1.32 × 10 ⁷ |

[†]GALEX effective wavelength for FUV channel is from Hunter et al. (2010). The effective wavelengths for UVIT FUV filters were estimated in Ravichandran et al. (2013)

probably constitute only ~1 phots/cm² (e.g. Safonova et al. 2008).

To estimate the annual rate of the events, we consider a young planetary system, where the central star is surrounded by planetesimals of different sizes. Within a volume of (1 A.U.)³ there can be 10⁸–10⁹ planetesimals, where few can be as massive as 10–100 M_{\oplus} with sizes 100 km dia and larger. For example, it takes 10⁶ embryos of 100 km diameter to make up one planet of 10,000 km. At typical velocities of 100 km/s, a typical system may have 10 collisions per year. If there are billions of planetary systems in our Galaxy (for ex. Cassan et al. 2012) and more than a third of them are young, <3 Gyr old (Shchekinov et al. 2014), there can be 10⁸ such systems in a Galaxy and we can expect 10⁹ such events per year. This number may actually even represent only a lower limit. In LUCI FOV of $\Delta\Omega = 2.15 \times 10^{-3}$, the number of events per exposure, that can last up to $\tau = 20,000$ s, can be as high as

$$N_f = \frac{R_f^{\text{pl}} \tau \Delta\Omega}{4\pi} \approx 114, \quad (6)$$

if we look at the Galactic plane.

Due to the temporal modulation (Safonova et al. 2008), these events may be distinguished from the dMe flares. Occurrence of repeated flashes of diminishing intensity due to the infall and subsequent rebound of debris falling back on the impactor is an additional clue. Every such collision will be followed by a long-duration IR afterglow that can be detected subsequently on the ground as a follow-up.

7 Summary

Despite being a small and experimental payload, LUCI will have an advantage of a wide FOV (~7 deg²) over the few instruments that previously operated in UV. In Table 3 we compare the general mission parameters for GALEX, UVIT and LUCI. We have calculated the point source sensitivity

(PSS), the reciprocal of the integration time needed to reach a given S/N, for a perfect telescope (Klimas et al. 2010),

$$S_0 = \frac{(3\pi^2 - 16)d^4}{48\lambda^2}, \quad (7)$$

where d is the aperture diameter and λ is the effective (operating) wavelength. In addition, we have calculated the survey parameter for comparing the ability of UV missions to estimate the UV background (Henry 1982; Brosch 1999),

$$S = \frac{100}{A\Delta\Omega\Delta\lambda}, \quad (8)$$

where A is the collecting aperture in cm², $\Delta\Omega$ is the FOV in sr, and $\Delta\lambda$ is the bandpass.

In this paper we have shown that in spite of being a small and experimental instrument, LUCI is a viable preliminary design for a lunar UV telescope that would be able to provide some unique scientific results. It, and similar small payloads, may pave the way to UV science in a period of dwindling space science budgets.

Acknowledgements MS is thankful to Bernard Foing for his valuable comments and suggestions on the possible scientific areas we can address with LUCI. We are also thankful to the anonymous referee for very helpful comments and suggestions.

References

- Abramson, A., Kenney, J.D.P., Crawl, H.H., et al.: *Astron. J.* **141**, 164 (2011)
- Adams, J.H., Bhattacharya, M., Lin, Z.W., Pendleton, G., Watts, J.W.: *Adv. Space Res.* **40**, 338 (2007)
- Alexander, T.: *Phys. Rep.* **419**, 65 (2005)
- Angel, R., Worden, S.P., Borra, E.F., et al.: *Astrophys. J.* **680**, 1582 (2008)
- Barton, A., Wong, N., Sadlier, G., Innes, D.: In: 20th Symposium on Small Satellite Missions, International Astronautical Congress (IAC) 2013, September 27, Beijing, China (2013)
- Benaroya, H.: *Lunar Settlements*. CRC Press, Taylor & Francis, Boca Rota (2010), p. 19

- Berg, O.E., Richardson, F.F., Auer, S., Rhee, J.W.: *Geophys. Res. Lett.* **1**, 289 (1974)
- Bodewits, D., Kelley, M.S., Li, J.-Y., Landsman, W.B., Besse, S., A'Hearn, M.F.: *Astrophys. J. Lett.* **733**, L3 (2011)
- Botticella, M.T., et al.: *Astrophys. J. Lett.* **717**, L52 (2010)
- Brosch, N.: *Exp. Astron.* **9**, 119 (1999)
- Brosch, N.: *Astrophys. Space Sci.* **320**, 207 (2009)
- Brosch, N., Balabanov, V., Behar, E.: *Astrophys. Space Sci.* (2014, in press)
- Canup, R., Asphaug, E.: *Nature* **412**(6848), 708 (2001)
- Cao, L., Ruan, P., Cai, H.B., et al.: *Sci. China, Ser. G, Phys. Mech. Astron.* **54**, 558 (2011)
- Carruthers, G.R., Page, T.: *Publ. Astron. Soc. Pac.* **96**, 447 (1984)
- Cassan, A., Kubas, D., Beaulieu, J.-P., et al.: *Nature* **481**, 167 (2012)
- Chapman, C.R.: *Annu. Rev. Earth Planet. Sci.* **32**, 539 (2004)
- Chen, P.C., Oliverson, R.J., Hojaji, H., Ma, K.B., Lamb, M., Chu, W.K.: In: Henry, G.W., Eaton, J.A. (eds.) *Robotic Telescopes. Current Capabilities, Present Developments, and Future Prospects for Automated Astronomy*. ASP Conference Series, vol. 79, p. 252 (1994)
- Connors, M., Wiegert, P., Veillet, C.: *Nature* **475**, 481 (2011)
- Degewij, J., Tedesco, E.F.: In: *IAU Colloq. 61: Comet Discoveries, Statistics, and Observational Selection*, p. 665 (1982)
- Diebold, S., et al.: In: *Proc. SPIE 8443 Space Telescopes and Instrumentation 2012: Ultraviolet to Gamma Ray*, vol. 84432X (2012), p. 8
- Douglas, J.N., Smith, H.J.: In: *Lunar bases and space activities of the 21st century (A86-30113 13-14)*, p. 301. Lunar and Planetary Institute, Houston (1985)
- Gahm, G.F., Persson, C.M., Mäkelä, M.M., Haikala, L.K.: *Astron. Astrophys.* **555**, A57 (2013)
- Gezari, S., Heckman, T., Cenko, S.B., et al.: *Astrophys. J.* **698**, 1367 (2009)
- Gezari, S., et al.: *Astrophys. J.* **683**, L131 (2008)
- Gezari, S., Chornock, R., Rest, A., et al.: *Nature* **485**, 217 (2012)
- Gezari, S., Martin, D.C., Forster, K., et al.: *Astrophys. J.* **766**, 60 (2013)
- Greaves, J.S., Wyatt, M.C., Holland, W.S., Dent, W.R.T.: *Mon. Not. R. Astron. Soc.* **351**, L54 (2004)
- Gump, D.: *New Space* **1**, 101 (2013)
- Hancock, G., Bauval, R., Grigsby, J.: *The Mars Mystery: A Tale of the End of Two Worlds*. Michael Joseph, London (1998). ISBN 10: 071814354X/ISBN 13: 9780718143541
- Harrington, J.D., Villard, R.: NASA Release: 10-029. Retrieved 2010-02-03 (2010)
- Hendrix, A.R., Vilas, F.: *Astron. J.* **132**, 1396 (2006)
- Henry, R.C.: In: *10-th Texas Symposium for Relativistic Astrophysics*. Ann NY Acad. Sci., New York (1982), p. 428
- Herbig, G.H.: *Astron. J.* **111**, 1241 (1996)
- Herbig, G.H., Simon, T.: *Astron. J.* **121**, 3138 (2001)
- Hicks, G.T., Chubb, T.A.: *J. Geophys. Res.* **75**, 6233 (1970)
- Hunter, D.A., Elmegreen, B.G., Ludkal, B.C.: *Astron. J.* **139**, 447 (2010)
- Jee, M.J., et al.: *Astrophys. J.* **661**, 728 (2007)
- Jewitt, D., Weaver, H., Agarwal, J., Mutchler, M., Drahus, M.: *Nature* **467**, 817 (2010)
- Jewitt, D., et al.: *Astrophys. J. Lett.* **778**, L21 (2013)
- Kappelmann, N., Barnstedt, J., Gringel, W., et al.: *HIRDES UV spectrographs*. In: Turner, M., Hasinger, G. (eds.) *Space Telescopes and Instrumentation II: Ultraviolet to Gamma Ray*. Proc. of the SPIE, vol. 6266 (2006)
- Klimas, P., Rowlands, N., Hickson, P., Borra, E.F., Thibault, S.: In: *Proc. SPIE*, vol. 7732 (2010)
- Kulkarni, S.R., Rau, A.: *Astrophys. J. Lett.* **644**, L63 (2006)
- Kumar, A., Ghosh, S.K., Hutchings, J., et al.: In: *Space Telescopes and Instrumentation 2012: Ultraviolet to Gamma Ray*. Proc. SPIE, vol. 8443, p. 1 (2012)
- Lester, D.: *Dirt, Gravity, and Lunar-Based Telescopes: The Value Proposition for Astronomy*. In: *Proceedings of STScI Workshop, Astrophysics Enabled by the Return to the Moon*, November 28–30 2006, STScI 11/28–30/2006 (2007)
- Lewicki, C., Diamandis, P., Anderson, E., et al.: *New Space* **1**, 105 (2013)
- Li, J.-Y., Bodewits, D., Feaga, L.M., et al.: *Icarus* **216**, 640 (2011)
- Lu, E.T., Reitsema, H., Troeltzsch, J., Hubbard, S.: *New Space* **1**, 42 (2013)
- de la Fuente Marcos, C., de la Fuente Marcos, R.: *Mon. Not. R. Astron. Soc.* **436**, L15 (2013)
- Mattila, K.: *Mon. Not. R. Astron. Soc.* **372**, 1253 (2006)
- McGraw, J.T.: In: *Pyper, D.M., Angione, R.J. (eds.) Optical Astronomy from the Earth and Moon*. Astronomical Society of the Pacific Conference Series, vol. 55, p. 283 (1994)
- McFadden, L.A., Ostro, S.J., Barker, E.S., et al.: *Bull. Am. Astron. Soc.* **16**, 691 (1984)
- Moreno, F., et al.: *Astrophys. J.* **738**, 130 (2011)
- Morghenthaler, J.P., Harris, W.M., Combi, M.R., Feldman, P.D., Weaver, H.A.: *Astrophys. J.* **726**, 8 (2011)
- Murthy, J.: *Astrophys. Space Sci.* **349**, 165 (2014)
- Murphy, D.L., Vondrak, R.R.: In: *Lunar and Planetary Institute Science Conference Abstracts*, vol. 24, p. 1033 (1993)
- Nein, M., Hilchey, J.: *J. Br. Interplanet. Soc.* **48**, 93 (1995)
- Nikołajuk, M., Walter, R.: *Astron. Astrophys.* **552**, A75 (2013)
- Oke, J.B., Gunn, J.E.: *Astrophys. J.* **266**, 713 (1983)
- Oonk, J.B.R., Hatch, N.A., Jaffe, W., Bremer, M.N., van Weeren, R.J.: *Mon. Not. R. Astron. Soc.* **414**, 2309 (2011)
- Page, T., Carruthers, G.R.: *S201 far-ultraviolet atlas of the large Magellanic cloud*. Interim Report Naval Research Lab., Washington, DC (1978)
- Pieters, C.M., Binzel, R.P., Bogard, D., et al.: *Asteroids Comets Meteors* **229**, 273 (2006)
- Rabinak, I., Waxman, E.: *Astrophys. J.* **728**, 63 (2011)
- Rickman, H.: In: *IAU Colloq. 83: Dynamics of Comets: Their Origin and Evolution*, vol. 115, p. 149 (1985)
- Ravichandran, S., Preethi, K., Safonova, M., Murthy, J.: *Astrophys. Space Sci.* **344**, 361 (2013)
- Safonova, M., Sivaram, C., Murthy, J.: *Astrophys. Space Sci.* **318**, 1 (2008)
- Safonova, M., Mohan, R., Sreejith, A.G., Murthy, J.: *Astron. Comput.* **1**, 46 (2013)
- Schawinski, K., Justham, S., Wolf, C., et al.: *Science* **321**, 223 (2008)
- Shchekinov, Y.A., Safonova, M., Murthy, J.: *Astrophys. Space Sci.* **346**, 31 (2013)
- Shchekinov, Y.A., Safonova, M., Murthy, J.: (2014, in preparation)
- Smith, R., et al.: *Mon. Not. R. Astron. Soc.* **408**, 1417 (2010)
- Song, I., Zuckerman, B., Weinberger, A.J., Becklin, E.E.: *Nature* **436**(7049), 363 (2005)
- Spexarth, G.R.: In: *Workshop on Hemispheres Apart: The Origin and Modification of the Martian Crustal Dichotomy*, p. 66 (2004)
- Stern, S.A.: *Astron. J.* **108**, 2312 (1994)
- Stern, S.A., et al.: *Astrophys. J.* **141**, 199 (2011)
- Stevenson, D.J.: *Annu. Rev. Earth Planet. Sci.* **15**, 271 (1987)
- Tiff, W.G.: *Astronaut. Aeronaut.* **4**, 40 (1966)
- Thilker, D.A., Boissier, S., Bianchi, L., et al.: *Astrophys. J. Suppl. Ser.* **173**, 572 (2007)
- Uesugi, K., et al.: *Acta Astronaut.* **25**(7), 347 (1991)

- Webster, C.R., Mahaffy, P.R., Flesch, G.J., et al.: *Science* **341**, 260 (2013)
- Weinberger, A.J.: *Astrophys. J. Lett.* **679**, L41 (2008)
- Weissman, P.R., Bottke, W.F. Jr., Levison, H.F.: In: *Asteroids III*, p. 669 (2002)
- Yeomans, D.K.: Beware of Errant Asteroids. *The New York Times Sunday Review*, Feb. 9 (2013)
- Yoshida, F., Nakamura, T.: *Astron. J.* **130**, 2900 (2005)
- Zubovas, K., Nayakshin, S., Markoff, S.: *Mon. Not. R. Astron. Soc.* **421**, 1315 (2012)