



Characteristics and outcomes of coronavirus disease 2019 (COVID-19) patients with cancer: a single-center retrospective observational study in Tokyo, Japan

Shohei Nakamura¹ · Yusuke Kanemasa¹ · Yuya Atsuta² · Sho Fujiwara³ · Masaru Tanaka³ · Kazuaki Fukushima³ · Taiichiro Kobayashi³ · Tatsu Shimoyama¹ · Yasushi Omuro¹ · Noritaka Sekiya^{4,5} · Akifumi Imamura³

Received: 19 June 2020 / Accepted: 8 November 2020 / Published online: 23 November 2020

© Japan Society of Clinical Oncology 2020

Abstract

Background Although severe acute respiratory syndrome coronavirus 2 (SARS-CoV-2) has caused an international outbreak of coronavirus disease 2019 (COVID-19), data on the clinical characteristics of COVID-19 patients with cancer are limited. This study aimed to evaluate the clinical characteristics and outcomes including mortality and viral shedding period in COVID-19 patients with cancer in Japan.

Methods We retrospectively analyzed 32 patients with a history of cancer who were referred to our hospital between January 31, 2020 and May 25, 2020. We evaluated the association between clinical outcomes and potential prognostic factors using univariate analyses.

Results The median age was 74.5 (range 24–90) years and 22 patients (69%) were men. A total of 11 patients (34%) died. Our analyses demonstrated that the mortality was significantly associated with lymphocyte count, albumin, lactate dehydrogenase, serum ferritin, and C-reactive protein on admission. The median period between illness onset and the first effective negative SARS-CoV-2 PCR result was 22 days (interquartile range 18–25) in survivors. Of four patients with hematological malignancy who developed COVID-19 within the rest period of chemotherapy, three died and the other patient, who received bendamustine plus rituximab therapy, had the longest duration of viral shedding (56 days).

Conclusion Our study suggested that the risk factors for mortality previously reported in general COVID-19 patients, including lymphocytopenia, were also effective in cancer patients. Patients who received cytotoxic chemotherapy recently or were treated with chemotherapy, which can lead to lymphocyte reduction, had poor prognosis and prolonged periods of viral shedding.

Keywords COVID-19 · Cancer · Chemotherapy · Lymphocytopenia · Japan

Electronic supplementary material The online version of this article (<https://doi.org/10.1007/s10147-020-01837-0>) contains supplementary material, which is available to authorized users.

✉ Yusuke Kanemasa
y-kanemasa@cick.jp

¹ Department of Medical Oncology, Tokyo Metropolitan Cancer and Infectious Diseases Center Komagome Hospital, 3-18-22 Honkomagome, Bunkyo-ku, Tokyo, Japan

² Division of Hematology, Tokyo Metropolitan Cancer and Infectious Diseases Center Komagome Hospital, Tokyo, Japan

³ Department of Infectious Diseases, Tokyo Metropolitan Cancer and Infectious Diseases Center Komagome Hospital, Tokyo, Japan

⁴ Department of Infection Prevention and Control, Tokyo Metropolitan Cancer and Infectious Diseases Center Komagome Hospital, Tokyo, Japan

⁵ Department of Clinical Laboratory, Tokyo Metropolitan Cancer and Infectious Diseases Center Komagome Hospital, Tokyo, Japan

Introduction

Coronavirus Disease 2019 (COVID-19), caused by severe acute respiratory syndrome coronavirus 2 (SARS-CoV-2), has spread globally since December 2019 [1, 2]. In Japan, the first patient with COVID-19 was reported on January 15, 2020 [3], and the number of patients increased rapidly from March to May. In this context, COVID-19 has been a great concern for patients who have a history of cancer. Previous reports have shown that patients with cancer had a higher risk of developing severe events [4–12]. The World Health Organization–China Joint Mission reported that the overall mortality was 3.8%, while the mortality of cancer patients was 7.6% in China [2].

Several studies reported the risk factors associated with development of severe events caused by COVID-19 in general people. A previous systematic review of 10 prognostic models for predicting poor prognosis in patients with COVID-19 showed that the most frequently reported predictors included age, sex, features derived from computed tomography (CT) scans, C-reactive protein (CRP), lactic dehydrogenase (LDH), and lymphocyte count [13]. Although some studies suggested the risk factors for mortality in cancer patients [5, 9], there are still insufficient data regarding the clinical characteristics and the risk factors for mortality in cancer patients. In particular, details of the viral shedding period and its association with chemotherapy have not been well described.

In this retrospective study, we evaluated the clinical characteristics and outcomes including the mortality and viral shedding period in COVID-19 patients with a history of cancer using the database in our hospital in Japan.

Patients and methods

Study design and patients

This was a retrospective, single-center, observational study. We reviewed the records of 32 patients with a history of cancer out of 235 COVID-19 patients who were referred to our hospital between January 31, 2020 and May 25, 2020. Clinical data were retrieved from electronic medical records, including demographic and clinical features, laboratory findings, radiological data, and the results of reverse transcription polymerase chain reaction (RT-PCR) assay for SARS-CoV-2.

This study was approved by the institutional ethics review boards of our hospital, and the requirement to obtain a written informed consent was waived.

Definitions

All patients were diagnosed with COVID-19 by RT-PCR assay for SARS-CoV-2. The discharge criteria included symptom improvement and two consecutive negative results of RT-PCR test of nasopharyngeal swab taken at least 24 h apart. The first effective negative PCR test was defined as the first test of the two negative PCR tests. The following comorbidities were also risk factors for COVID-19: diabetes, hypertension, coronary heart disease, chronic obstructive pulmonary disease (COPD), and asthma. Patients with active cancer were defined as those who received treatment for cancer such as chemotherapy, immunotherapy, or hormone therapy within 30 days of COVID-19 onset, those scheduled to undergo cancer treatment, and/or those with metastasis to other organs. The illness onset was defined as the day when symptoms appeared.

Statistical analysis

We used the Mann–Whitney *U* test or Fisher's exact test to compare the characteristics between survivors and non-survivors. We used a receiver operating characteristic (ROC) curve to determine the best cut off values of laboratory data. Overall survival (OS) was defined as the period from illness onset to the date of last follow-up or death from any cause. OS was estimated using the Kaplan–Meier method. Differences between survival curves were tested for significance using the log-rank test. Two-sided *P* values of 0.05 or less were considered significant. Hazard ratios and 95% confidence intervals were calculated with the use of Cox proportional-hazards models. All statistical analyses were performed with EZR (Saitama Medical Center, Jichi Medical University, Saitama, Japan), which is a graphical user interface for R (The R Foundation for Statistical Computing, Vienna, Austria). More precisely, it is a modified version of R commander designed to add statistical functions frequently used in biostatistics [14].

Results

Patient characteristics

A total of 235 patients were referred to our hospital with COVID-19 between January 31, 2020 and May 25, 2020. We retrospectively enrolled 32 patients with a history of cancer. They were all Asians except for one Australian. A total of 11 patients (34%) eventually died, and all deaths

were due to COVID-19. Twenty-one patients (66%) were discharged or transferred with negative RT-PCR results.

Table 1 shows the clinical characteristics of these patients. The median age was 74.5 (range 24–90) years and 22 patients (69%) were men. A total of 25 patients (78%) had solid tumors, while 7 (22%) had hematologic malignancies. In addition to cancer, 19 (59%) had at least one comorbidity, with hypertension being the most common (13 patients, 41%). Thirteen patients (41%) received cancer treatment within 30 days.

CT or X-ray on admission showed radiological features of pneumonia in 27 patients (84%). Lymphocytopenia (lymphocyte count $<0.8 \times 10^9$ /L) occurred in 13 patients (41%) and was predominant among the non-survivors (73% vs. 24%). Twenty-two patients (69%) received favipiravir, while ten patients (31%) were treated with systematic glucocorticoids.

The median time from illness onset to admission was 7 days (interquartile range [IQR] 4–8). The median time from illness onset to death was 24 days (IQR 15–26). The median period between illness onset and the first effective negative SARS-CoV-2 RT-PCR result was 22 days (IQR 18–25) in survivors.

Risk factors for mortality

The results of univariate analysis for OS are shown in Table 2. The following risk factors were significantly associated with mortality: lymphocyte count, albumin, LDH, serum ferritin, and CRP on admission. In our study, age, comorbidities, D-dimer, cancer type (hematologic or non-hematologic malignancy) and cancer status were not associated with OS. The Kaplan–Meier survival curve stratified by high and low lymphocyte count is shown in Fig. 1a (30-day OS: 90% and 46%, $P=0.004$). We further stratified patients with high and low lymphocyte count by comorbidities (30-day OS: 100%, 82%, 80%, and 25%, $P=0.003$, for high lymphocyte count and no comorbidities, high lymphocyte count and some comorbidities, low lymphocyte count and no comorbidities, and low lymphocyte count and some comorbidities) (Fig. 1b).

We suspected that the reduction in lymphocyte count was possibly caused by a certain factor, such as hematological toxicity of recent cytotoxic chemotherapy. Hence, we stratified patients with low lymphocyte count by whether they developed COVID-19 within the rest periods of cytotoxic chemotherapy or not. There was no significant difference between patients within the rest periods and other patients (30-day OS: 44% and 50%, $P=0.75$) (Fig. 1c).

Outcomes in patients with active cancer

The clinical characteristics of 17 patients with active cancer are summarized in Supplementary Table 1. Seven patients

received chemotherapy, while two patients received ICIs (nivolumab and pembrolizumab + ipilimumab) within 30 days before the onset of COVID-19. Four patients received continuous hormone therapy. Pembrolizumab treatment was discontinued in one patient with metastatic lung cancer more than 200 days before the onset of COVID-19. One patient experienced a relapse with liver metastases after remission induced by repeated chemotherapy and surgery for rectal cancer. Two patients had not been treated yet as they developed COVID-19 before cancer treatment.

Figure 2 shows the timeline of cancer treatment, illness onset, SARS-CoV-2 RNA detection, and death in this subgroup of patients in order of low lymphocyte count. The longest period between illness onset and the first effective negative SARS-CoV-2 RT-PCR result was 56 days in a patient who received bendamustine plus rituximab (BR) for Waldenström's macroglobulinemia/lymphoplasmacytic lymphoma. Moreover, another patient who received BR for mantle cell lymphoma 17 days before the illness onset tested positive for the virus at 42 days after the onset and eventually died. One patient who received azacytidine for acute myeloid leukemia (AML) 10 days before the onset and showed severe pancytopenia at the onset progressed rapidly and died in 1 week. One patient with ALK-negative anaplastic large cell lymphoma (ALCL) who received brentuximab vedotin, cyclophosphamide, doxorubicin, and prednisolone (A + CHP) 7 days prior to the onset of COVID-19 also died within 26 days. Among the four COVID-19 patients with hematological malignancy who developed COVID-19 within the rest periods of chemotherapy, three died and the other one had the longest duration of viral shedding among survivors. The two patients with AML and acute lymphocytic leukemia (ALL) had received induction and consolidation therapy, respectively. They both recovered from pancytopenia, remained in remission at the onset of COVID-19, and were eventually cured.

Two patients receiving ICIs within 30 days eventually improved and were discharged, although one of them had elevated CRP and ferritin levels on admission and was treated with high-flow nasal cannula oxygen therapy without glucocorticoid therapy.

Discussion

To our knowledge, this is the first study to report on COVID-19 patients with a history of cancer in Japan. The factors associated with mortality were similar to those reported in previous studies conducted on general patients with COVID-19, including lymphocytopenia on admission. Patients who received myelosuppressive chemotherapy recently or received lymphocyte-reducing chemotherapy, such as BR,

Table 1 Characteristics and outcomes of patients with a history of cancer

	Total (n = 32)	Survivors (n = 21)	Non-survivors (n = 11)	P values
Clinical characteristics				
Age (range), years	74.5 (24–90)	72 (24–87)	76 (53–90)	0.38
Age > 70	20 (63%)	12 (57%)	8 (73%)	0.47
Male sex	22 (69%)	12 (57%)	10 (91%)	0.11
Smoking history (+)	20/29 (69%)	14/19 (74%)	6/10 (60%)	0.67
Any comorbidities	19 (59%)	10 (48%)	9 (82%)	0.13
Diabetes	7 (22%)	4 (19%)	3 (27%)	0.67
Hypertension	13 (41%)	7 (33%)	6 (55%)	0.28
Coronary heart disease	4 (13%)	2 (10%)	2 (18%)	0.59
Chronic obstructive lung disease	4 (13%)	2 (10%)	2 (18%)	0.59
Asthma	2 (6%)	1 (5%)	1 (9%)	1
Cancer type				0.67
Hematologic malignancy				
Acute myeloid leukemia	7 (22%)	4 (19%)	3 (27%)	
Acute lymphocytic leukemia	2 (6%)	1 (5%)	1 (9%)	
Anaplastic large cell lymphoma	1 (3%)	1 (5%)	0	
Mantle cell lymphoma	1 (3%)	0	1 (9%)	
B-cell lymphoma	1 (3%)	1 (5%)	0	
WM/LPL	1 (3%)	1 (5%)	0	
Non-hematologic malignancy				
Gastric cancer	25 (78%)	17 (81%)	8 (73%)	
Colorectal cancer	5 (16%)	4 (19%)	1 (9%)	
Prostatic cancer	5 (16%)	4 (19%)	1 (9%)	
Esophageal cancer	3 (9%)	0	3 (27%)	
Lung cancer	2 (6%)	2 (10%)	0	
Breast cancer	2 (6%)	2 (10%)	0	
Kidney cancer	2 (6%)	0	2 (18%)	
Cervical cancer	2 (6%)	2 (10%)	0	
Thymoma	1 (3%)	1 (5%)	0	
Hepatocellular carcinoma	1 (3%)	1 (5%)	0	
Skin cancer	1 (3%)	1 (5%)	0	
Cancer treatment				
Operation	13 (41%)	9 (43%)	4 (36%)	1
Hormone therapy	4 (13%)	2 (10%)	2 (18%)	0.59
Chemotherapy	10 (31%)	7 (33%)	3 (27%)	1
Immunotherapy	3 (9%)	2 (10%)	1 (9%)	1
Chemotherapy/immunotherapy (within ≤ 30 days)	9 (28%)	6 (29%)	3 (27%)	1
Any treatment (within ≤ 30 days)	13 (41%)	8 (38%)	5 (46%)	0.72
Cancer status				
Follow-up/cured	12 (43%)	7 (41%)	5 (46%)	1
Active cancer	17 (53%)	11 (52%)	6 (55%)	
Images and laboratory findings on admission				
Pneumonia on CT or X-ray	27 (84%)	16 (76%)	11 (100%)	0.14
White blood cell count, × 10 ⁹ /L	5.6 (3.6–6.7)	5.4 (3.6–6.3)	5.7 (3.6–12.7)	0.38
Neutrophil count, × 10 ⁹ /L	3.6 (2.4–4.5)	3.5 (2.4–4.1)	4.0 (2.2–11.3)	0.33
< 1.5	3 (9%)	1 (5%)	2 (18%)	0.23
Lymphocyte count, × 10 ⁹ /L	1.0 (0.6–1.4)	1.1 (0.8–1.4)	0.6 (0.4–1.1)	0.057
< 0.8	13 (41%)	5 (24%)	8 (73%)	0.021
Hemoglobin, g/dL	12.2 (10.8–13.6)	12.8 (10.9–14.4)	11.3 (10.6–12.9)	0.19
Platelet count, × 10 ¹⁰ /L	20.5 (12.0–24.7)	21.2 (17.5–24.9)	15.3 (8.1–19.3)	0.074

Table 1 (continued)

	Total (n = 32)	Survivors (n = 21)	Non-survivors (n = 11)	P values
Creatinine, mg/dL	0.7 (0.6–1.0)	0.7 (0.6–0.9)	0.9 (0.7–1.7)	0.15
Total bilirubin, mg/dL	0.5 (0.4–0.7)	0.5 (0.4–0.6)	0.5 (0.4–0.8)	0.66
Albumin, g/L	3.2 (2.8–3.6)	3.4 (3.1–3.6)	2.5 (2.1–3.3)	0.018
< 3.0	8/27 (30%)	2/17 (12%)	6/10 (60%)	0.025
Lactate dehydrogenase, U/L	260.5 (196.3–368.3)	224.0 (185.0–291.0)	364.0 (246.0–418.5)	0.068
> 350	9 (28%)	3 (14%)	6 (55%)	0.035
Serum ferritin, µg/L	426.8 (148.8–1104.0)	280.5 (124.1–686.4)	1084.0 (615.8–1894.0)	0.029
> 800	9/25 (36%)	4/18 (22%)	5/7 (71%)	0.058
C-reactive protein, mg/dL	3.5 (0.8–8.6)	1.7 (0.2–4.9)	16.1 (4.4–24.0)	0.002
> 5.0	13 (41%)	5 (24%)	8 (73%)	0.021
D-dimer, µg/L	1.0 (0.7–2.5)	1.0 (0.7–2.3)	1.5 (0.8–4.5)	0.29
> 1.0	13/26 (50%)	9/18 (50%)	4/8 (50%)	1
Treatments for COVID-19				
Favipiravir	22 (69%)	12 (57%)	10 (91%)	0.11
Lopinavir/ritonavir	2 (6%)	1 (5%)	1 (9%)	1
Ciclesonide	5 (16%)	3 (14%)	2 (18%)	1
Hydroxychloroquine	3 (9%)	1 (5%)	2 (18%)	0.27
Systematic glucocorticoids	10 (31%)	3 (14%)	7 (64%)	0.013
Oxygen therapy	21 (66%)	10 (48%)	11 (100%)	0.005
High-flow nasal cannula oxygen therapy	6 (19%)	3 (14%)	3 (27%)	0.39
Noninvasive positive-pressure ventilation	1 (3%)	0 (0%)	1 (9%)	0.34
Invasive mechanical ventilation	3 (9%)	0 (0%)	3 (27%)	0.033
Outcomes				
Acute respiratory distress syndrome	15 (47%)	4 (19%)	11 (100%)	<0.001
Time from onset to admission, days	7 (4–8)	7 (4–7)	6 (4–8)	0.76
Time from onset to death, days			24 (15–26)	
Time from onset to negative PCR result, days		22 (18–25)		

Data are expressed as *n* (%), *n/N* (%), or median (IQR), unless specified otherwise

WM/LPL Waldenström's macroglobulinemia/lymphoplasmacytic lymphoma

were found to have a greater risk of mortality and prolonged viral shedding periods.

Lymphocytopenia is one of the frequently mentioned features of COVID-19 and correlates with clinical severity [15–17]. In the same way, T-cell count in peripheral blood is also significantly reduced and associated with high mortality rate [18–21]. Moreover, T-cells from COVID-19 patients have significantly higher expression levels of PD-1 and Tim-3, which suggests the surviving T-cell appear functionally exhausted [19]. These results imply that cellular immune response necessary for effective viral elimination is attenuated in COVID-19 patients. In our study, the detectable SARS-CoV-2 RNA persisted for a median of 22 days from the illness onset in survivors, which is almost the same as that reported in previous studies in general patients [22, 23]. Interestingly, the virus was detectable for especially long duration in two patients who received BR, one of whom eventually died. This treatment is known to suppress cellular immunity and reduce lymphocyte count strongly compared

with rituximab plus CHOP (cyclophosphamide, doxorubicin, vincristine, and prednisolone) [24, 25]. Thus, BR makes cellular immune response much weaker, thus leading to the prolongation of viral shedding and poor outcomes. Likewise, highly myelosuppressive chemotherapy for hematological malignancy causes pancytopenia, and also lymphocytopenia as a matter of course, and can lead to severe COVID-19. Our finding showed that patients with low lymphocyte count had poor OS regardless of the presence or absence of recent cytotoxic agent administration (Fig. 1c). However, recent cytotoxic chemotherapy may be an important adverse factor in COVID-19 patients as a cause of lymphocytopenia.

Some retrospective study did not show any significant association between recent cancer treatment and mortality, as with our study [9–12]. However, one retrospective study in China reported a higher likelihood of experiencing severe events in patients who received antitumor treatment within 14 days of COVID-19 diagnosis [5]. We described the details of the outcome including the viral shedding

Table 2 Univariable analysis for overall survivals

	Univariate analysis	
	Hazard ratio (95% CI)	P values
Age (> 70)	1.80 (0.48–6.78)	0.37
Sex (male)	4.82 (0.62–37.73)	0.093
Smoking history (+)	0.55 (0.15–1.96)	0.34
Comorbidities (any)	3.93 (0.84–18.34)	0.057
Diabetes	1.60 (0.42–6.07)	0.48
Hypertension	2.15 (0.65–7.09)	0.19
Coronary heart disease	1.41 (0.30–6.54)	0.65
Chronic obstructive lung disease	1.64 (0.35–7.62)	0.52
Asthma	1.64 (0.21–13.14)	0.63
Cancer type (hematologic malignancy)	1.36 (0.36–5.13)	0.64
Cancer treatment (any treatment within ≤30 days)	1.31 (0.40–4.33)	0.65
Cancer status (active cancer)	1.16 (0.35–3.83)	0.80
Neutrophil count (< 1.5), × 10 ⁹ /L	2.73 (0.59–12.67)	0.18
Lymphocyte count (< 0.8), × 10 ⁹ /L	5.74 (1.50–21.92)	0.004
Albumin (< 3.0), g/L	5.32 (1.47–19.21)	0.004
Lactate dehydrogenase (> 350), U/L	4.40 (1.33–14.63)	0.008
Serum ferritin (> 800), µg/L	6.12 (1.18–31.79)	0.014
C-reactive protein (> 5.0), mg/dL	5.82 (1.53–22.09)	0.010
D-dimer (> 1.0), µg/L	1.10 (0.27–4.38)	0.90

CI confidential interval

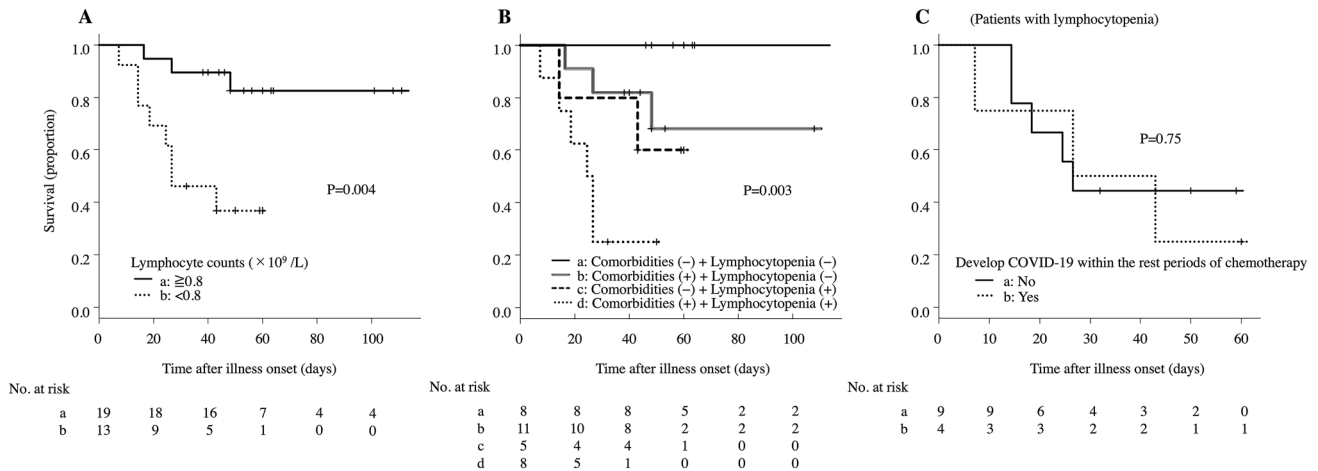


Fig. 1 Kaplan–Meier survival curves stratified by lymphocyte count, and lymphocyte count and comorbidities in all patients (a, b) and further stratified patients with low lymphocyte count by whether they developed COVID-19 within the rest periods of chemotherapy or not (c)

period and its association with treatment in patients with active cancer (Fig. 2). In this study, two patients who received cytotoxic chemotherapy within the rest periods (azacytidine for AML and A + CHP for ALK-negative ALCL) developed severe COVID-19 and eventually died. On the contrary, patients with AML and ALL, who recovered from pancytopenia and remained in remission at the onset of COVID-19 after intensive treatment, were cured. Therefore, the risk of developing severe COVID-19 must

be considered in patients who received myelosuppressive chemotherapy recently.

A recent study reported that patients with different tumor types have variable COVID-19-related mortality, with significantly increased case-fatality rate in patients with leukemia [26]. In this study, there was no statistically significant difference of OS between patients with hematologic and non-hematologic malignancy, which may be due to the limited number of study population. However, patients with

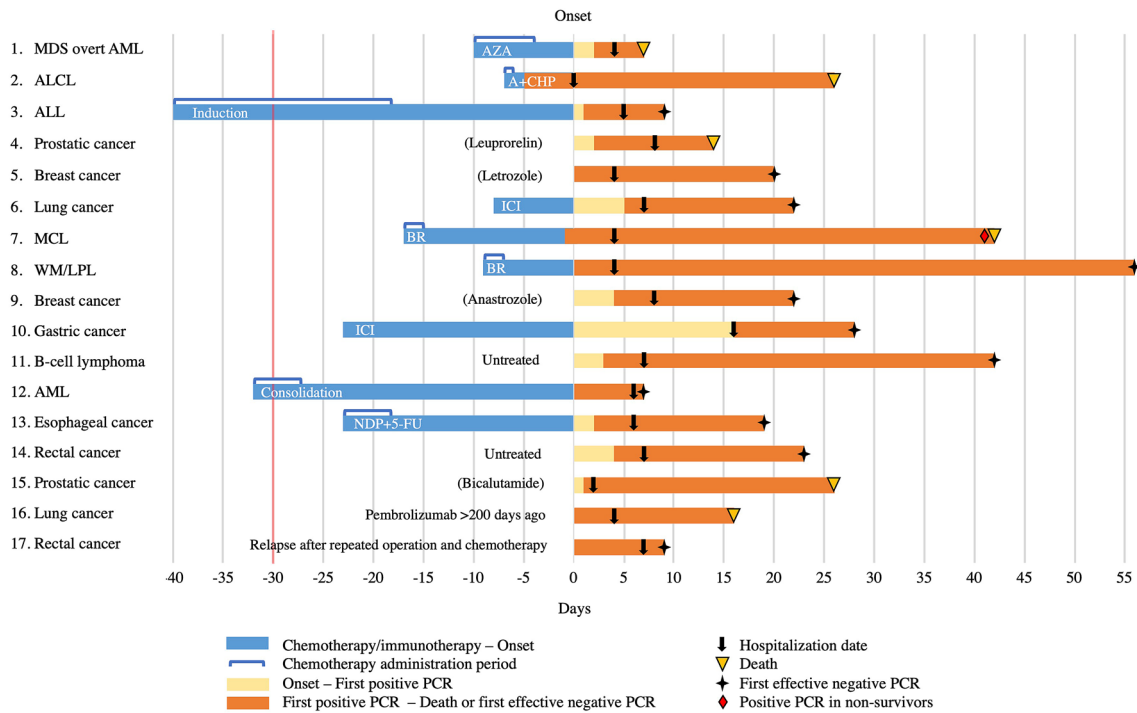


Fig. 2 Timeline of treatment for cancer, illness onset, SARS-CoV-2 RNA detection, and death in patients with active cancer. *MDS* myelodysplastic syndromes, *AML* acute myeloid leukemia, *ALCL* anaplastic large cell lymphoma, *ALL* acute lymphocytic leukemia, *MCL* mantle cell lymphoma, *WM/LPL* Waldenström’s macroglobulinemia/

lymphoplasmacytic lymphoma, *AZA* azacytidine, *A + CHP* brentuximab vedotin, cyclophosphamide, doxorubicin, and prednisolone, *ICI* immune checkpoint inhibitors, *BR* bendamustine plus rituximab, *NDP + 5-FU* nedaplatin and 5-fluorouracil

hematologic cancer need very careful monitoring, because they are likely to receive intensive myelosuppressive chemotherapy and to develop severe COVID-19 as described above.

One of the important aggravating mechanisms of COVID-19 is cytokine release syndrome [27, 28]. Meanwhile, immune checkpoint inhibitors may also activate the immune system and cause cytokine release syndrome [29]. One retrospective study reported that immunotherapy within 90 days was an independent risk factor for hospitalization and severe disease in cancer patients [10]. In our study, two patients received immunotherapy within 30 days. One patient had elevated CRP and ferritin levels on admission and required high-flow nasal cannula oxygen therapy. However, they eventually recovered even without receiving glucocorticoids. Further study is needed to confirm the association between immunotherapy and mortality of COVID-19.

Coagulopathy is also one of the mechanisms that can exacerbate COVID-19. Patients with COVID-19 are at risk of thromboembolism, and an increase in the concentrations of circulating D-dimer indicates pulmonary vascular bed thrombosis with fibrinolysis [30]. Several studies reported that elevated D-dimer on admission predicted mortality [22, 31, 32]. Meanwhile, cancer patients are originally at high risk of venous thromboembolism [33, 34]. Although one

retrospective cohort study in New York showed the association between D-dimer and mortality from COVID-19 in cancer patients [9], our study did not demonstrate a significant correlation between them. Determining the incidence of venous thrombosis in COVID-19 patients with cancer and interpreting the changes in D-dimer concentrations remain challenging.

This study has several limitations. First, this study was a retrospective, single center with a small sample size. Not all laboratory tests related to the prognosis of COVID-19, including albumin, serum ferritin, and D-dimer, were performed in all patients. We did not perform a multivariate analysis due to the lack of data and the small number of the study population. Second, we decided the cut off values of laboratory data by ROC curve. Although the best cut off values is unknown, the cut off value of lymphocyte count in this study, for example, is the same as the value used in the MuLBSTA score ($< 0.8 \times 10^9 / L$), which predicts mortality risk in patients with viral pneumonia [35]. Additional studies based on larger cohorts are needed to define the most predictive cut off values for COVID-19. Third, the types of cancer and treatment were very heterogeneous in this study, because we included all patients who had a history of cancer. Although it was difficult to draw a conclusive evidence from such a study population, our study provided new

insight on the clinical features of COVID-19 patients with cancer. Future studies with a larger sample size are needed to further explore the risk factors for mortality in COVID-19 patients according to cancer or treatment types.

In conclusion, our study suggested that the risk factors for mortality previously reported in general COVID-19 patients, including lymphocytopenia, were also effective in cancer patients. Awareness on the risk of chemotherapy that leads to severe cytopenia or suppresses cellular immunity during the COVID-19 pandemic must be improved.

Acknowledgements We would like to thank all the patients who took part in this study and Editage (www.editage.com) for English language editing.

Funding No financial support was received for this study.

Compliance with ethical standards

Conflict of interest No author has any conflict of interest.

References

- Zhu N, Zhang D, Wang W et al (2019) A novel coronavirus from patients with pneumonia in China. *N Eng J Med* 382(8):727–733. <https://doi.org/10.1056/NEJMoa2001017>
- Organization WH (2020) Report of the WHO–China Joint Mission on Coronavirus Disease 2019 (COVID-19). 16–24 February 2020
- Organization WH (2020) Novel Coronavirus (2019-nCoV): Situation Report-1. 21 January 2020
- Liang W, Guan W, Chen R et al (2020) Cancer patients in SARS-CoV-2 infection: a nationwide analysis in China. *Lancet Oncol* 21(3):335–337. [https://doi.org/10.1016/s1470-2045\(20\)30096-6](https://doi.org/10.1016/s1470-2045(20)30096-6)
- Zhang L, Zhu F, Xie L et al (2020) Clinical characteristics of COVID-19-infected cancer patients: a retrospective case study in three hospitals within Wuhan, China. *Ann Oncol Off J Eur Soc Med Oncol* 31(7):894–901. <https://doi.org/10.1016/j.annonc.2020.03.296>
- Zhang H-Y, Wang L-W, Chen Y-Y et al (2020) A multicentre study of 2019 novel coronavirus disease outcomes of cancer patients in Wuhan, China. *medRxiv* 41:145. <https://doi.org/10.1101/2020.03.21.20037127>
- He W, Chen L, Chen L et al (2020) COVID-19 in persons with haematological cancers. *Leukemia* 34(6):1637–1645. <https://doi.org/10.1038/s41375-020-0836-7>
- Martín-Moro F, Marquet J, Piris M et al (2020) Survival study of hospitalised patients with concurrent COVID-19 and haematological malignancies. *Br J Haematol*. <https://doi.org/10.1111/bjh.16801>
- Mehta V, Goel S, Kabarriti R et al (2020) Case fatality rate of cancer patients with COVID-19 in a New York Hospital System. *Cancer Discov*. <https://doi.org/10.1158/2159-8290.cd-20-0516>
- Robilotti EV, Babady NE, Mead PA et al (2020) Determinants of severity in cancer patients with COVID-19 illness. *medRxiv*. <https://doi.org/10.1101/2020.05.04.20086322>
- Lee LYW, Cazier JB, Starkey T et al (2020) COVID-19 mortality in patients with cancer on chemotherapy or other anticancer treatments: a prospective cohort study. *Lancet* (London, England). [https://doi.org/10.1016/s0140-6736\(20\)31173-9](https://doi.org/10.1016/s0140-6736(20)31173-9)
- Kuderer NM, Choueiri TK, Shah DP et al (2020) Clinical impact of COVID-19 on patients with cancer (CCC19): a cohort study. *Lancet* (London, England). [https://doi.org/10.1016/s0140-6736\(20\)31187-9](https://doi.org/10.1016/s0140-6736(20)31187-9)
- Wynants L, Van Calster B, Collins GS et al (2020) Prediction models for diagnosis and prognosis of covid-19 infection: systematic review and critical appraisal. *BMJ* (Clin Res Ed) 369:m1328. <https://doi.org/10.1136/bmj.m1328>
- Kanda Y (2013) Investigation of the freely available easy-to-use software ‘EZR’ for medical statistics. *Bone Marrow Transplant* 48(3):452–458. <https://doi.org/10.1038/bmt.2012.244>
- Huang C, Wang Y, Li X et al (2020) Clinical features of patients infected with 2019 novel coronavirus in Wuhan, China. *Lancet* (London, England) 395(10223):497–506. [https://doi.org/10.1016/s0140-6736\(20\)30183-5](https://doi.org/10.1016/s0140-6736(20)30183-5)
- Chen N, Zhou M, Dong X et al (2020) Epidemiological and clinical characteristics of 99 cases of 2019 novel coronavirus pneumonia in Wuhan, China: a descriptive study. *Lancet* (London, England) 395(10223):507–513. [https://doi.org/10.1016/s0140-6736\(20\)30211-7](https://doi.org/10.1016/s0140-6736(20)30211-7)
- Yang X, Yu Y, Xu J et al (2020) Clinical course and outcomes of critically ill patients with SARS-CoV-2 pneumonia in Wuhan, China: a single-centered, retrospective, observational study. *Lancet Respir Med* 8(5):475–481. [https://doi.org/10.1016/s2213-2600\(20\)30079-5](https://doi.org/10.1016/s2213-2600(20)30079-5)
- Diao B, Wang C, Tan Y et al (2020) Reduction and functional exhaustion of T cells in patients with coronavirus disease 2019 (COVID-19). *Front Immunol* 11:827. <https://doi.org/10.3389/fimmu.2020.00827>
- Jiang M, Guo Y, Luo Q et al (2020) T cell subset counts in peripheral blood can be used as discriminatory biomarkers for diagnosis and severity prediction of COVID-19. *J Infect Dis*. <https://doi.org/10.1093/infdis/jiaa252>
- Liu J, Li S, Liu J et al (2020) Longitudinal characteristics of lymphocyte responses and cytokine profiles in the peripheral blood of SARS-CoV-2 infected patients. *EBioMedicine* 55:102763. <https://doi.org/10.1016/j.ebiom.2020.102763>
- Wan S, Yi Q, Fan S et al (2020) Characteristics of lymphocyte subsets and cytokines in peripheral blood of 123 hospitalized patients with 2019 novel coronavirus pneumonia (NCP). *medRxiv*. <https://doi.org/10.1101/2020.02.10.20021832>
- Zhou F, Yu T, Du R et al (2020) Clinical course and risk factors for mortality of adult inpatients with COVID-19 in Wuhan, China: a retrospective cohort study. *Lancet* (London, England) 395(10229):1054–1062. [https://doi.org/10.1016/s0140-6736\(20\)30566-3](https://doi.org/10.1016/s0140-6736(20)30566-3)
- Xiao AT, Tong YX, Gao C et al (2020) Dynamic profile of RT-PCR findings from 301 COVID-19 patients in Wuhan, China: a descriptive study. *J Clin Virol Off Publ Pan Am Soc Clin Virol* 127:104346. <https://doi.org/10.1016/j.jcv.2020.104346>
- Rummel MJ, Niederle N, Maschmeyer G et al (2013) Bendamustine plus rituximab versus CHOP plus rituximab as first-line treatment for patients with indolent and mantle-cell lymphomas: an open-label, multicentre, randomised, phase 3 non-inferiority trial. *Lancet* (London, England) 381(9873):1203–1210. [https://doi.org/10.1016/s0140-6736\(12\)61763-2](https://doi.org/10.1016/s0140-6736(12)61763-2)
- Flinn IW, van der Jagt R, Kahl BS et al (2014) Randomized trial of bendamustine-rituximab or R-CHOP/R-CVP in first-line treatment of indolent NHL or MCL: the BRIGHT study. *Blood* 123(19):2944–2952. <https://doi.org/10.1182/blood-2013-11-531327>
- Lee LYW, Cazier J-B, Starkey T et al (2020) COVID-19 prevalence and mortality in patients with cancer and the effect of primary tumour subtype and patient demographics: a prospective cohort study. *Lancet Oncol* 21(10):1309–1316. [https://doi.org/10.1016/S1470-2045\(20\)30442-3](https://doi.org/10.1016/S1470-2045(20)30442-3)

27. Mehta P, McAuley DF, Brown M et al (2020) COVID-19: consider cytokine storm syndromes and immunosuppression. *Lancet* (London, England) 395(10229):1033–1034. [https://doi.org/10.1016/S0140-6736\(20\)30628-0](https://doi.org/10.1016/S0140-6736(20)30628-0)
28. Moore JB, June CH (2020) Cytokine release syndrome in severe COVID-19. *Science* (New York, NY) 368(6490):473–474. <https://doi.org/10.1126/science.abb8925>
29. Rotz SJ, Leino D, Szabo S et al. (2017) Severe cytokine release syndrome in a patient receiving PD-1-directed therapy. *Pediatric Blood Cancer* 64(12). <https://doi.org/10.1002/pbc.26642>
30. McGonagle D, O'Donnell JS, Sharif K et al (2020) Immune mechanisms of pulmonary intravascular coagulopathy in COVID-19 pneumonia. *Lancet Rheumatol*. [https://doi.org/10.1016/S2665-9913\(20\)30121-1](https://doi.org/10.1016/S2665-9913(20)30121-1)
31. Wu C, Chen X, Cai Y et al (2020) Risk factors associated with acute respiratory distress syndrome and death in patients with coronavirus disease 2019 pneumonia in Wuhan, China. *JAMA Intern Med*. <https://doi.org/10.1001/jamainternmed.2020.0994>
32. Zhang L, Yan X, Fan Q et al (2020) D-dimer levels on admission to predict in-hospital mortality in patients with Covid-19. *J Thromb Haemost JTH* 18(6):1324–1329. <https://doi.org/10.1111/jth.14859>
33. Walker AJ, Card TR, West J et al (2013) Incidence of venous thromboembolism in patients with cancer - a cohort study using linked United Kingdom databases. *Eur J Cancer* (Oxford, England 1990) 49(6):1404–1413. <https://doi.org/10.1016/j.ejca.2012.10.021>
34. Khorana AA, Kuderer NM, Culakova E et al (2008) Development and validation of a predictive model for chemotherapy-associated thrombosis. *Blood* 111(10):4902–4907. <https://doi.org/10.1182/blood-2007-10-116327>
35. Guo L, Wei D, Zhang X et al. (2019) Clinical features predicting mortality risk in patients with viral pneumonia: the MuLBSTA score. *Front Microbiol* 10(2752). <https://doi.org/10.3389/fmicb.2019.02752>

Publisher's Note Springer Nature remains neutral with regard to jurisdictional claims in published maps and institutional affiliations.