




# Extent of resection in diffuse low-grade gliomas and the role of tumor molecular signature—a systematic review of the literature

Lucas Alverne F. Albuquerque<sup>1,2</sup>  · João Paulo Almeida<sup>3</sup> · Leonardo José Monteiro de Macêdo Filho<sup>4</sup> · Andrei F. Joaquim<sup>2</sup> · Hugues Duffau<sup>5</sup>

Received: 17 March 2020 / Revised: 20 July 2020 / Accepted: 28 July 2020 / Published online: 7 August 2020  
© Springer-Verlag GmbH Germany, part of Springer Nature 2020

## Abstract

There is a lack of class I evidence concerning the impact of surgery in the treatment of diffuse low-grade glioma; the early maximal resection with preservation of eloquent brain areas has been accepted as the first therapeutic option. We performed a systematic review of the literature using the Preferred Reporting Items for Systematic Reviews and Meta-Analyses (PRISMA) guidelines and protocol. Inclusion criteria: only case series with at least 100 patients containing supratentorial hemispheric diffuse low-grade glioma (according to any of the WHO classification used in papers published between 2000 to 2019), with pre- and postoperative MRI study were included in the qualitative and quantitative analyses. The extent of resection should be defined based on MRI at least in two categories and correlated with patients' outcomes (with univariate or multivariate analyses) using overall survival (OS) or malignant progression-free survival (MPFS). A total of 18 series with 4386 patients, published in 20 papers, were included in this systematic review. All the series that evaluates the relation between the extent of resection (EOR) and OS showed a statistically significant improvement of OS at univariate and/or multivariate analyzes with a greater EOR. Six studies showed a statistically significant improvement of MPFS with a greater EOR. We demonstrate that when a more rigorous analysis of EOR is performed, a benefit of a more aggressive resection on OS and MPFS is observed. Our review about EOR in different molecular groups of DLGG also suggests a benefit of maximum safe resection for all different subtypes, even though “radical surgery” may be associated with better OS and MPFS in tumors with a more aggressive signature.

**Keywords** Low-grade glioma · Extent of resection · Overall survival · Molecular signature · Systematic review

## Key points

- When systematically measured, the importance of EOR for DLGG is evident in outcome.
- All subgroups of DLGG benefit from a higher EOR.
- Higher EOR may have a greater impact on DLGG with a more aggressive signature.

✉ Lucas Alverne F. Albuquerque  
lucasalverne@gmail.com

<sup>1</sup> Department of Neurosurgery, General Hospital of Fortaleza, Fortaleza, Ceará, Brazil

<sup>2</sup> Department of Neurology, University of Campinas, Campinas, São Paulo, Brazil

<sup>3</sup> Department of Neurosurgery, Neurological Institute, Cleveland Clinic, Cleveland, OH, USA

<sup>4</sup> Health Science Center, University of Fortaleza, Fortaleza, Ceará, Brazil

<sup>5</sup> Department of Neurosurgery, Gui de Chauliac Hospital, Montpellier University Medical Center, Montpellier, France

## Importance of the study

We made a systematic review about the importance of the extent of resection (EOR) in diffuse low-grade glioma. This review brings three new aspects in literature:

1. We selected only papers with a systematic assessment of the extent of resection with MRI
2. We detailed the papers with pre- and postoperative volumetric assessments
3. We reviewed the impact of the extent of resection on different molecular subtypes of LGG

Our study reviews the results of large, modern series that assessed the impact of EOR on the outcome of patients with DLGG. Although there are similar studies, this is the first review to combine all series that performed pre- and postoperatively MRI analysis of the tumor and all series that also performed volumetric analyses. We could observe for the first time that all series with a rigorous analysis of the tumor volume with volumetric assessment were unanimous in demonstrating that the higher the EOR the better the prognosis.

## Introduction

Supratentorial diffuse low-grade glioma (DLGG), classified as World Health Organization (WHO) Grade II tumors, are diffuse neuroectodermal primary brain tumors [5, 58]. They are characterized by continuous and relatively slow growth at an average rate of 4 mm/year [41, 58]. Their diffuse infiltrative pattern, tumor invasiveness, and migration along the white matter tracts limit the extent of surgical resection, jeopardizing the efficacy of oncological treatments. DLGG will inevitably become malignant [56, 57] and such malignant transformation (MT) will lead to the functional deficit and ultimately to death [13].

Supratentorial DLGG is a complex and heterogeneous group, with a highly variable median survival, ranging from a few months to more than 15 years, variable according to clinical factors, molecular characteristics, and treatment protocol [5, 18, 24, 62].

Treatment of DLGG includes surgery, radiotherapy, and/or chemotherapy. The role of surgery is still to be investigated in a randomized trial, which is unlikely to happen due to ethical reasons [58]. Although there is a lack of class I evidence concerning the impact of surgery, the early maximal resection with preservation of eloquent brain areas has been accepted as the first therapeutic option for most DLGG [5, 40, 45, 63], once multiple clinical series have demonstrated evidence that extent of resection (EOR) is a significant prognostic factor for malignant progression-free survival (MPFS) and overall survival (OS) among those patients [5, 40, 45, 63].

This systematic review aims to evaluate the impact of the EOR in DLGG patients and also assess the impact of the new WHO gliomas classification, based on the molecular signature, on the surgical treatment of different subtypes of DLGG. The originality of this article consists of our paper selection, including only series with a systematic assessment of the EOR comparing pre- and postoperative MRI, and we detailed the papers with pre- and postoperative volumetric assessment.

## Methods

We performed a systematic review of the literature using the Preferred Reporting Items for Systematic Reviews and Meta-Analyses (PRISMA) guidelines and protocol (Fig. 1). A literature search was performed using PubMed, Cochrane Library, EMBASE, MEDLINE, and SCOPUS databases up to October 12, 2019. Search terms included “grade II AND gliomas AND surgery, low-grade AND gliomas AND surgery, and low-grade AND glioma AND surgery.” We selected full-text articles published from January 2000 to September 2019. Screening of titles and abstracts was performed, and further evaluation of full-text publications was used to further exclude studies.

**Inclusion criteria** Only case series with at least 100 patients containing supratentorial hemispheric diffuse low-grade glioma (according to any of the WHO classification used in papers published between 2000 to 2019), with pre- and postoperative MRI study were included in the qualitative and quantitative analyses. The extent of resection should be defined based on MRI at least in two categories and correlated with patients’ outcomes (with univariate or multivariate analyses) using OS or malignant progression-free survival (MPFS).

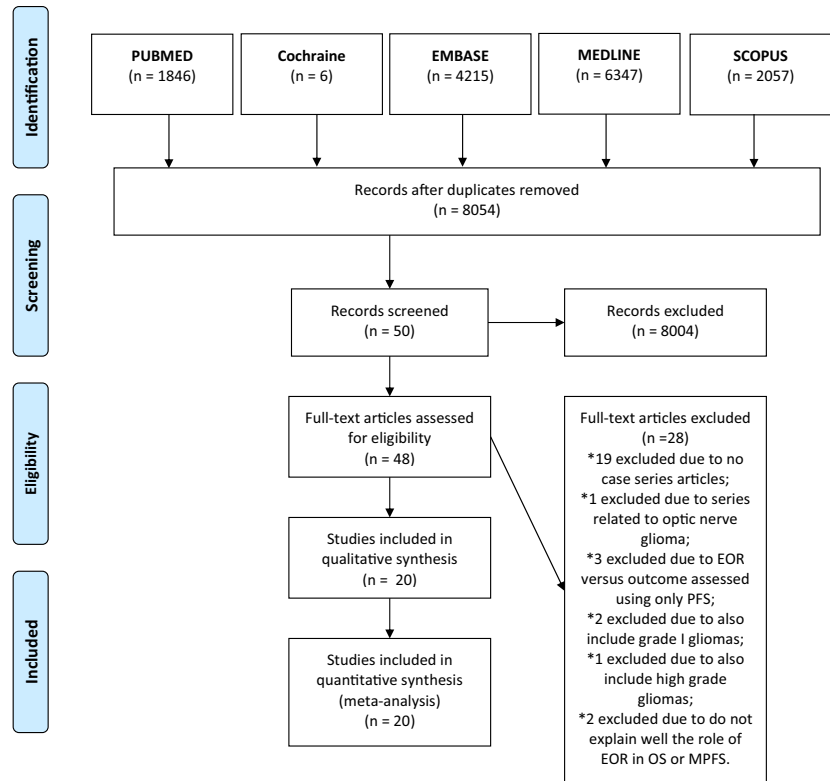
**Exclusion criteria** Case series related to non-hemispheric supratentorial diffuse low-grade glioma (e.g., optic nerve glioma), series in which the EOR was defined based only in the surgeon’s impression or with CT scan, and extension of resection versus outcome assessed using only progression-free survival (PFS) were excluded.

We did not use the PFS as a variable, because we understand that DLGGs present a slow, but continuous growth. Therefore, they would not have a real interval without progression [39]. Mandonnet et al. [29] demonstrated that DLGGs are not stable lesions. They observed that the average slope of the evolution of the mean tumor diameter [MTD =  $(2 \times V)^{1/3}$ ] overtime was corresponding to 4.1 mm/year (95% CI 3.8–4.4 mm/year), and that the MTD of these tumors grows inexorably during the follow-up period in a grossly linear fashion. Pallud et al. [40], in a similar paper with 143 DLGG patients, showed a growth rate in all cases, mean of 4.4 mm/year (ranged from 1 to 35.8 mm/year). The same group published a larger series of DLGG with 407 patients,

**Fig. 1** PRISMA 2009 flow diagram



**PRISMA 2009 Flow Diagram**



showing a mean diameter expansion of 5.8 mm/year (median of 3.9 mm/year) [38]. They observed that the spontaneous velocity of diametric expansion modeled as a categorical ( $< 8$  or  $\geq 8$  mm/year) or as a continuous variable was an independent prognostic factor at multivariate analysis for OS ( $p < 0.001$ ) and MPFS ( $p < 0.001$ ). It also has been shown that radiological tumor growth rates remain unchanged after surgical resection [29, 31].

We extracted details on the type of study, which WHO classification was used, patient characteristics including age and sex, initial tumor volume, volumetric assessment, resected percentage, extent of resection per group, OS versus EOR, malignant progression-free survival versus EOR, follow-up years, and number of deaths. Included studies were assessed by two authors (L. J. M. M. F and L. A. F. A.) to ensure that cases were correctly included in the study. Patient data from multiple studies were combined into a table for comparison (Table 1) [1, 5, 6, 8, 12, 17, 20, 22–24, 26, 27, 31, 36, 37, 45, 50, 52, 58, 64].

### Additional clinical questions

In addition to the systematic review described above, we conducted a second review seeking to answer two questions to

assess the role of the molecular profile versus the EOR or RTV in DLGG:

1. Does the EOR or RTV have a positive effect on OS according to different molecular signatures?
2. Does the molecular signature influence the EOR or RTV?

To this review, we included case series containing supratentorial hemispheric diffuse low-grade glioma with pre- and postoperative MRI study. The EOR or RTV should be defined based on MRI and correlated with patients' outcomes using OS. The EOR or RTV should be correlated with the IDH and/or 1p19q status.

### Results

A total of 18 series, published in 20 papers, were included in this systematic review (Table 1). Two series were published twice focusing on different aspects of the same population in the case of Nitta et al. [36, 37], and reviewing the results considering the new WHO classification and with longer follow up in the case of Jakola et al. [21, 23]. Thirteen series were single-center [1, 6, 8, 12, 17, 26, 27, 30, 36, 37, 45, 52, 64],

**Table 1** The extent of resection in overall survival and malignant progression-free survival in systematic pre and post-operative MRI analysis series for supratentorial diffuse low-grade glioma (WHO II) after year 2000

Series (ref. no.)	Who classification used	No of institutions	Type of study	Volumetric assessment <sup>a</sup>	No. of patients	Age (years)	Gender - % male	Initial tumor volume (cm <sup>3</sup> )	Resected %	Extent of resection per groups (no. of patients)
Claus et al. [8]	NA	1	Retrospective	Manual segmentation	156	41.6 (mean)	54.1	45.2 (mean)	80.5 (mean)	1) 100% (56) 2) < 100% (100) 1) > 10 cm <sup>3</sup> of residue (57) 2) < 10 cm <sup>3</sup> of residue (37)
Duffau et al. [12]	NA	1	Retrospective 1985 to 1996	Ellipse volume ABC/2	100	38 (mean)	56	69 (median)	NA	3) No residue (6) 1) > 10 cm <sup>3</sup> of residue (29) 2) < 10 cm <sup>3</sup> of residue (62) 3) No residue (31)
Smith et al. [52]	2000	1	Retrospective 1996 to 2003	Manual segmentation	216	38 (median)	62	36.6 (median)	88 (median)	1) < 90% (115) 2) 90–99% (26) 3) 100% (75)
McGirt et al. [32]	2007	1	Retrospective	No volumetric assessment	170	34.7 (mean)	59.4	NA	NA	1) Residual nodular lesion (66) 2) ≤ 3 mm thickness (39) 3) 100% (65)
Ahmadi et al. [1]	1993	1	Retrospective	No volumetric assessment	130	36 (median)	60.7	NA	NA	1) < 100%: (39) 2) 100%: (91)
Chaichana et al. [6]	2000	1	Retrospective	No volumetric assessment	191	34.9 (mean)	58	NA	NA	1) < 100%: (122) 2) 100%: (69)
Ius et al. [22]	2007	1	Retrospective	Manual segmentation	190	37 (median)	58.4	55 (median)	87.5 (median)	1) < 70% (30) 2) 70–89% (69) 3) ≥ 90% (91)
Youland et al. [64]	2007	1	Retrospective	No volumetric assessment <sup>e</sup>	554 <sup>d</sup>	39.5 (mean)	58	NA	NA	1) Biopsy (215) 2) < 80% (114) 3) > 80% (54) 4) 100% (171)
Capelle et al. [5]	2007	REG <sup>g</sup>	Retrospective and Prospective	Ellipse volume ABC/2	1097	37.6 (mean)	55.9	55 (median)	76.8 (median)	1) < 50% (431) 2) 50–99% (418) 4) 100% (80) <sup>h</sup>
Gousias et al. [20]	NA	1	Retrospective	No volumetric assessment	148	38 (median)	56.1	NA	NA	1) Biopsy (11) 2) < 100% (75) 3) 100% (62)
Nitta et al. [37] Nitta et al. [36]	2000 [37] 2000 [36]	1	Retrospective	Volumetric assessment, but not specified the method	153	37 (median)	54.9	29 (median) 38.4 (mean)	95 (median) 81.4 (mean)	1) < 90% (59) 2) ≥ 90% (94)

**Table 1** (continued)

Series (ref. no.)	Who classification used	No of institutions	Type of study	Volumetric assessment <sup>a</sup>	No. of patients	Age (years)	Gender - % male	Initial tumor volume (cm <sup>3</sup> )	Resected %	Extent of resection per groups (no. of patients)
Liu et al. [26]	NA	1	Retrospective	Manual segmentation	115 <sup>l</sup>	NA	66.9	NA	NA	1) < 100% (83) 2) 100% (32)
Roelz et al. [45]	2007	1 <sup>k</sup>	Retrospective near--randomized in two groups 1) Biopsy 2) Resection <sup>l</sup>	Manual segmentation	126 1) 77 2) 49	41 1) 44 2) 39 (mean) <i>p</i> = 0.045 <i>p</i> = 0.096	69 1) 65 2) 76 <i>p</i> = 0.24	1) 54 2) 75 (mean)	NA	1) Biopsy (77) 2.1) > 15 cm <sup>3</sup> of residue (22) 2.2) < 15 cm <sup>3</sup> of residue (27)
Coburger et al. [9]	2007	6	Restrospective	No volumetric assessment	288	39 (mean)	NA	NA	NA	1) < 100%: (150) 2) 100%: (138)
Jakola et al. [23] Jakola et al. [24]	2000 [23] 2007 [24]	2	Retrospective near--randomized in two groups 1) Hospital A 2) Hospital B <sup>m</sup>	No volumetric assessment	153 1) 66 2) 87	1) 45 2) 44 (mean) <i>p</i> = 0.67	1) 62 2) 54 <i>p</i> = 0.33	NA	NA	1) 47 (71%) biopsy and 19 (29%) resection 2) 12 (14%) biopsy and 75 (86%) resection
Eseonu et al. [17]	2000	1	Retrospective	Semi-automatic across-slice segmentation	109	37 (median)	57.8	29.7 (median)	88.1 (median)	<i>p</i> < 0.001 1) < 79% (26) 2) 70–89% (24) 3) 90–99% (25) 4) 100% (34) 1) 0–40%: 67 2) 41–89%: 90 3) 90–94%: 22 4) 95–99%: 14 5) 100%: 35
Wijnenga et al. [58]	2016	2	Retrospective	Semi-automatic across-slice segmentation with manual correction	228	42 (median)	59.6	47.3 (median)	76.1 (median)	Continuous variable <sup>b</sup>
Scherer et al. [50] <sup>o</sup>	2016	6	Retrospective	Semi-automatic across-slice segmentation with manual correction	140	39 (mean)	NA	44.8 (mean) 28.8 (median)	75.5 (mean) 89 (median)	

Series (ref. no.)	Median OS (years)	Overall survival versus EOR		Malignant progression-free survival versus EOR		Follow-up (years)	No. deaths (%)
		Univariate <i>p</i> value	Multivariate <i>p</i> value	Univariate <i>p</i> value	Multivariate <i>p</i> value		
Claus et al. [8]	NA	In 3 years 1) 98.2% 2) 92.0%	NA	0.05	NA	NA	3.0 (mean) 1) 1/56 (1.7%) 2) 8/100 (8%)
Duffau et al. [12]	NA	In 7 years 1) 47.4%	NA	0.04	NA	NA	7.3 (mean) 1) 30/57 (52.6%)

Table 1 (continued)

Series (ref. no.)	Median OS (years)	Overall survival versus EOR		Malignant progression-free survival versus EOR		Follow-up (years)	No. deaths (%)	
		Overall survival in "n" years	Univariate <i>p</i> value	Multivariate <i>p</i> value	Time			Univariate <i>p</i> value
Smith et al. [52]	NA	2) 65%	0.02	NA	NA	4.1 (mean)	2) 13/37 (35)	
		3) 100%					3) 0/6 (0)	
		In 4 years					1) 6/29 (20.6)	
McGirt et al. [32]	NA	1) 79.4%	NA	NA	In 8 years:	4.4 (mean)	1) 48%	
		2) 92%					2) 76%	
		3) 100%					3) 79%	
		In 5/8 years respectively					1) 7 years	0.005
		1) 76%/60%					2) 5.8 years	
2) 97%/91%	3) 12.5 years	All cases: 8.8 years (median)						
McGirt et al. [32]	1) 9.9 2) 11 3) 15 All cases: 12	In 5 years	NA	0.017	NA	4 (mean)	34 (20)	
		1) 70%						
		2) 80%						
		3) 95%						
Ahmadi et al. [1]	All cases: 16	NA	0.024	0.005	0.472	7.8 (mean)	NA	
Chaichana et al. [6]	NA	NA	NA	NA	0.0005	3 (mean)	NA	
Ius et al. [22]	NA	In 5/8 years respectively	< 0.0001	0.001	< 0.0001	4.75 (median)	41 (21.6)	
Youland et al. [64]	All cases: 11.4	In 10 years	< 0.0001	> 0.05 (< 0.05) <sup>f</sup>	NA	5.2 (median)	178 (32.1)	
		1 and 2): 48%						
		3 and 4): 66%						
Capelle et al. [5]	All cases: 15	In 5 / 10 years respectively (approximately)	< 0.0001	0.0199	NA	7.4 (mean)	245 (22.3)	
Gousias et al. [20]	not reached	In 5 years	< 0.001	NA <sup>i</sup>	8.16 years (mean)	5.75 (mean)	21 (15.2)	
		1) 77% / 55%						
		2) 89% / 69%						
Nitta et al. [37]	NA	In 5/8/10 years respectively	0.0014	0.0391	2.24 (median)	NA	NA	
		95.1%/85.4%/85.4% for the whole group						
Liu et al. [26]	NA	1) 89.7% / 0.2% / NA	0.012	0.025	NA	4.75 (median)	NA	
		2) 98.4% / 95.7% / 95.3%						

**Table 1** (continued)

Series (ref. no.)	Median OS (years)	Overall survival versus EOR		Malignant progression-free survival versus EOR		Follow-up (years)	No. deaths (%)
		Overall survival in “n” years	Univariate <i>p</i> value	Multivariate <i>p</i> value	Time		
Roelz et al. [45]	1) 6.7 2.1) 10.6 2.2) not reached <i>p</i> = 0.003	In 5/10 years respectively 1) 54% / 38% 2) 82% / 67%	1) versus 2) 0.0018	1) versus 2.1): 0.28 1) versus 2.2): 0.002 2.1) versus 2.2) 0.034	NA	1) 4.3 2) 5.6 (mean)	31/143 (21.6) <sup>l</sup> 1) 43 (56) 2.1) 12 (55) 2.2) 6 (22) <i>p</i> < 0.05
Coburger et al. [9]	1) 13.5–14.3 2) 25.1 All cases: 21 (mean) At 2012	NA	<0.05	NA	NA	4.3 (mean)	NA
Jakola et al. [23]	1) 5.9 2) Not reached <i>p</i> = 0.01 At 2017	In 5/10 years respectively 1) 59% / 26% 2) 72% / 40%	1) versus 2) 0.01	0.03	At 2012 the % of MT at late FU 1) 56% 2) 37%	At 2012: 1) 7.0 2) 7.1 (median) <i>p</i> = 0.95 At 2017: NA <sup>n</sup>	At 2012 1) 34 (52) 2) 28 (32)
Esconu et al. [17]	NA <i>p</i> = 0.005	In 5/8 years respectively 1) 76%/54% 2) 82%/54% 3) 92%/76% 4) 95%/95%	4) versus 1) and 2) 0.038 Threshold > 76% 0.025	0.029	3.42 years (median)	5.2 (median)	17 (15.6)
Wijnenga et al. [58]	All cases: 13.1	NA	< 0.0001	0.062	NA	5.79 (median)	69 (30.2)
Scherer et al. [50] <sup>o</sup>	All cases: 16.1	NA	0.01	NA	NA	5.2 (median)	14 (10)

EOR extent of resection, NA not applicable, FU follow up, MT malignant transformation, RV residual volume

<sup>a</sup> Estimation of tumor volume in these series was calculated by segmentation (drawing the tumor area in each MRI cut) or by the ellipsoid approximation ( $[D1 \times D2 \times D3]/2$ ), on the basis of the 3 largest diameters (D1, D2, and D3)

<sup>b</sup> EOR remained a statistically significant predictor of OS even when the set of patients analyzed was confined to those with EOR of at least 80% (*p* = 0.016)

<sup>c</sup> Malignant progression and consequently the effect of surgery on the time of progression were not completely reliably defined due to the lack of histological confirmation in many cases. They considered PFS, what most author describes as MPFS: defined as the time point from initiation of the treatment to the occurrence of first relapse with evidence of malignant transformation or last follow-up or death used as censored observation

<sup>d</sup> 539/554; 97% had supratentorial tumors

<sup>e</sup> Postoperative imaging and operative reports, if postoperative imaging was not available, were used to determine the extent of surgical resection. Postoperative imaging was available for 387 patients (70%), which was concordant with neurosurgeon’s impression in 378 cases (98%)

<sup>f</sup> Although GTR/rSTR (> 80% of resection) was not associated with OS on multivariate analysis at first, it was likely masked by the strong negative association between postoperative RT and OS. When RT was removed from multivariate analysis, GTR/rSTR was strongly associated with higher OS, as expected ( $p < 0.05$ )

<sup>g</sup> Cases selected for this study were extracted from a database containing more than 1500 consecutive cases of GIGs that had been collected retrospectively since January 1985 and prospectively since 1996 by a French multicenter and multidisciplinary study group (Réseau d'Étude des Gliomes [REG]) focusing on GIGs from January 1985 up to December 2007

<sup>h</sup> Data not available for all patients (929 cases, including those with only biopsy). OBS: No treatment in 165 patients

<sup>i</sup> Only 21 patients died during follow-up, precluding robust multivariate proportional hazards modeling of overall survival. No patient with a complete resection died during follow-up

<sup>j</sup> In this paper, until 2012 patients with a first diagnosis of DLGG were treated and followed either by the department of Stereotactic Neurosurgery or the Department of Neurosurgery—both acting independently. This situation led to a near-randomized distribution of patients with DLGG to initial management either by biopsy or surgical resection

<sup>k</sup> 1 hospital, 2 departments

<sup>l</sup> This series presents 143 patients, but only 115 went through univariate and multivariate analyses, that was the LGG that involved the sub-ventricular zone (SVZ)

<sup>m</sup> In a retrospective population-based parallel cohort study, they assessed survival in patients with LGGs treated at two Norwegian university hospitals with completely different surgical treatment strategies. The two hospitals served exclusively in defined geographical catchment regions. The hospital in region A favored biopsy and watchful waiting while early 3D ultrasound guided resection in general anesthesia was the preferred strategy in region B. Thus, the treatment strategy in individual patients highly depended on their residential address

<sup>n</sup> No data about the median follow up. Follow-up ended 1st January 2016

<sup>o</sup> This series analyses part of part of the patients (140 of 288) of another series already included in this table, Coburger et al. [9]. Here, they selected 140 patients with complete IDH mutation status and complete pre- and postoperative MRI Scans with volumetric calculation

<sup>p</sup> The paper does not specify the number of patients in the subgroups created for EOR (< 20%, 20–40%, 40–60%, 60–80%, 80–100%, and 100%) or RV (0 ml, 0–5 ml, 5–20 ml, and > 20 ml). They observed a continuous increase in survival probability over incremental steps of RV and EOR. They support the notion of a continuous association of EOR and RV with OS

two with two centers [23, 24, 50], and three multicentric [5, 20, 50]. Seventeen series were retrospective and one had a mixture of retrospective and prospective patients [5]. In all series, the EOR was based in a pre- and postoperative MRI; there were no volumetric assessments in 7 series, volumetric assessment with the ellipse volume in 2 series [5, 10], and volumetric assessment by segmentation in 10 series [8, 17, 22, 26, 36, 37, 45, 50, 52, 58].

A total of 4386 patients were included. The mean age ranged from 34.7 to 45 years old, and the median age ranged from 36 to 44 years old. In all series, men were more predominant (ranging from 54.1 to 76%). The mean initial tumor volume ranged from 38.4 to 75 cm<sup>3</sup> and the median initial tumor volume ranged from 28.8 to 69 cc. The mean EOR ranged from 75.5 to 81.4% and the median EOR ranged from 76.1 to 95%.

We found different cutoff thresholds of EOR, as shown in Table 1, and even then, all the series (17/18) that evaluate the relation between EOR and OS showed a statistically significant improvement of OS at univariate and/or multivariate analyzes with a greater EOR. The only series that did not observe such association was the one published by Chaichana et al. [6]. Those authors did not evaluate that parameter—instead, their analysis was focused on recurrence and malignant degeneration after resection of DLGG. Six studies showed a statistically significant improvement of MPFS at univariate and/or multivariate analyzes with a greater EOR [1, 6, 20, 22–24, 52].

We observed a heterogeneous follow-up duration, varying from a mean of 3 years to 7.8 years. The median OS varied from 5.8 to 6.7 years at biopsy groups to 14.4–25.1 years in groups that underwent maximal safe resection.

The authors used different WHO classification in their methodology (range from 1993 WHO classification to 2016 WHO classification). It is interesting to observe that with the meticulous analysis of the pre and postoperative tumor volume, a positive correlation between EOR and OS was observed independent of the WHO classification used.

## Surgical goal

Regarding OS and MPFS, some authors have demonstrated the benefit of EOR as a continuous variable and others as an ordinal variable [1, 5, 25, 32, 36, 52, 64] (Table 2). However, the threshold of the extent of resection or residual tumor volume (RTV) from which there is a clinical benefit remains a matter of debate. In Table 2, we selected series that correlated in a multivariate fashion the EOR or postoperative residual tumor volume with the overall survival. We observe that for EOR, a positive finding ranges from > 40% of resection to 100% or resection; and for RTV, a positive finding ranges from < 15 to 0 cm<sup>3</sup> [1, 5, 18, 22, 25, 26, 32, 36, 37, 44, 51, 52, 56, 62, 64].



**Table 2** Low-grade glioma—minimum extent of resection or residual tumor volume cutoff to improve overall survival at multivariate analysis

Series (ref. no.)	No of patients	Extent of resection (which cutoff)	Postoperative residual tumor volume (which cutoff)
Yeh et al. [62] <sup>a</sup>	93	Yes (100%)	NA
Smith et al. [52]	216	Yes (> 80%)	Yes (0 cm <sup>3</sup> )
McGirt et al. [32]	170	Yes (100%)	NA
Rezvan et al. [44] <sup>a</sup>	130	Yes (> 90%)	NA
Schomas et al. [51] <sup>a</sup>	314	Yes (rSTR or GTR) <sup>b</sup>	NA
Ahmadi et al. [1]	130	Yes (100%)	NA
Ius et al. [22]	190	Yes (continuous variable)	NA
Youland et al. [64]	554	Yes (> 80%) <sup>c</sup>	NA
Capelle et al. [5]	1097	Yes (100%)	NA
Nitta et al. [36]	153	Yes (≥ 90%)	NA
Nitta et al. [37]			
Liu et al. [26]	115	Yes (100%)	NA
Roelz et al. [45]	126	NA	Yes (< 15 cm <sup>3</sup> )
Jungk et al. [25] <sup>a</sup>	46	Yes <sup>c</sup> (≥ 40%)	Yes <sup>d</sup> (continuous variable)
Wijnenga et al. [58]	228	NA	Yes (continuous variable)
Franceschi et al. [18] <sup>a</sup>	213	Yes (100%)	NA

NA not applicable

Inclusion criteria: only case series with at least 40 patients containing supratentorial hemispheric diffuse low-grade glioma (according to any of the WHO classification used in papers published between 2000 to 2019), only series with multivariate analyses positive findings, outcome assessed using overall survival (OS)

Exclusion criteria: case series related to non-hemispheric supratentorial diffuse low grade glioma (ex.: optic nerve glioma), outcome assessed using only progression-free survival (PFS) or malignant progression-free survival (MPFS), series with only univariate analyses positive findings

<sup>a</sup> Series not included in Table 1

<sup>b</sup> A surgical procedure was designated as radical subtotal resection (rSTR) first, when the operative report described “radical subtotal resection”; second when gross total resection (GTR) was clearly the goal of the operation but minimal known tumor was left in situ; or third when imaging reports indicated small, questionable amounts of residual tumor after GTR

<sup>c</sup> Although GTR/rSTR (> 80% of resection) was not associated with OS on multivariate analysis at first, it was likely masked by the strong negative association between postoperative RT and OS. When RT was removed from multivariate analysis, GTR/rSTR was strongly associated with higher OS, as expected ( $p < 0.05$ )

<sup>c</sup> In this analysis of low-grade astrocytomas stratified for IDH1 mutation, extensive tumor resections were prognostic for OS in patients with ≥ 40% EOR

<sup>d</sup> In a subgroup of patients with ≥ 40% EOR

## Role of molecular signature

With the increasing participation of molecular markers in the management of DLGG, it has been speculated on its real role in clinical practice. We reviewed these markers to answer two main questions related to the main scope of our review (Table 3).

### Does the EOR or RTV have a positive effect on OS according to different molecular signatures?

There is no consensus about this data in the literature, as we may see in Table 3. The methodology and focus of these studies are heterogeneous, making it hard to conclude. Some authors observed that a greater resection was

beneficial to all the new subgroups of the 2016 WHO classification [24]. Eseonu et al. [17] also believe that all subgroups would benefit from a higher EOR. However, because of a small number of patients with IDHmt without 1p19q codeletion, this subgroup did not reach the statistical significance. On the other hand, Wijnenga et al. [58] only found the benefit of a greater EOR in this specific subgroup with IDHmt without 1p19q codeletion.

Analyzing in isolation the IDHmt, Jungk et al. [25] and Scherer et al. [50] concluded that IDHmt patients would benefit from a higher EOR, which was not seen by Patel et al. [41]. And analyzing in isolation the IDHwt, Patel et al. [41] and Scherer et al. [50] observed a higher OS in patients with greater EOR. Poulen et al. [43] could not correlate positively the EOR with OS; however, all the patients in this series benefited from a large resection as we comment below in the discussion.

**Table 3** The correlation between the molecular signature of DLGG and the EOR and/or RTV

Series (ref. no.)	No of patients	Does the EOR or RTV have a positive effect on OS according to different molecular signatures?				Does the molecular signature influence the EOR or RTV?				
		IDHmt with 1p19 codeletion	IDH mt without 1p19 codeletion	IDHwt	Isolated IDH1mt	Isolated 1p19q codeletion	IDH1	1p19q	p53	Ki67
Cordier et al. [10]	200	NA	NA	NA	NA	NA	No correlation	Inferior EOR with codeletion ( $p = 0.0463$ )	No correlation	No correlation
Jungk et al.[25]	46	NA	NA	NA	Yes $p = 0.005$	NA	NA	NA	NA	NA
Jakola et al.[24]	153	Yes $p = 0.001$	Yes $p = 0.001$	Yes $p = 0.001$	NA	NA	NA	NA	NA	NA
Esconu et al.[17]	109	Yes $p < 0.001$	NA	Yes $p = 0.04$	NA	NA	NA	NA	NA	NA
Patel et al.[41]	74	NA	NA	Yes $p = 0.003$	No $p = 0.48$	NA	NA	NA	NA	NA
Wijnenga et al.[58]	228	No correlation $p = 0.11$	Yes $p = 0.027$	NA	NA	NA	No correlation	No correlation	NA	NA
Poulen et al.[43]	31	NA	NA	No correlation $p = 0.11$	NA	NA	NA	NA	NA	NA
Rossi et al. [46]	449	NA	NA	NA	NA	NA	No correlation	NA	NA	NA
Scherer et al.[50] <sup>a</sup>	140	NA	NA	Yes	Yes	Yes	No correlation	NA	NA	NA

DLGG diffuse low-grade glioma, EOR extent of resection, RTV residual tumor volume, OS overall survival, IDHmt isocitrate dehydrogenase (IDH 1 or IDH 2) mutation, IDHwt isocitrate dehydrogenase wild-type, NA not applicable

<sup>a</sup> The values of “ $p$ ” are not available at the paper, but the author state at the paper: “GTR had a mutual beneficial effect on PFS and OS regardless of the molecular profile in terms of IDH or 1p19q (Figures, Supplemental Digital Contents 5 and 6)”

When observing the 1p 19q isolated, Scherer et al. [50] observed a greater EOR benefit in these patients.

## Does the molecular signature influence the EOR or RTV?

Cordier et al. [10] retrospectively investigated the predictive value of 1p19q, IDH1, p53 expression, and Ki67 index for the EOR in 200 patients with DLGG, trying to discover if a better EOR is correlated to a more favorable genetic profile. There was no significant correlation between IDH1, p53, or Ki67 and the EOR. However, they observed a statistical significance of lower EOR in patients with codeletion 1p19q ( $p = 0.0463$ ).

Wijnenga et al. showed that the molecular subtype of the tumor did not correlate with postoperative tumor volume [58]. Scherer et al. [50] and Rossi et al. [46] did not find any association between IDH status and postoperative RTV or EOR, respectively.

## Discussion

The impact of the EOR on the outcome of DLGG patients is controversial. Different factors likely play a role to justify such heterogeneous results, including tumor biology, case selection, and method for assessment of the extent of resection. The inconsistency of results might be influenced by the fact that EOR was not routinely assessed on postoperative MRI but, instead, it was sometimes based on the neurosurgeon's estimation of tumor resection or a single computed tomography scan, in some studies, what has been shown to be much less accurate [13, 22].

According to European guidelines [53] and as demonstrated by our review, maximal resection with preservation of eloquent brain areas is an essential part of the treatment of DLGG [53]. The classic strategy of biopsy followed by a “wait and see” approach is associated with inferior outcomes and should be reserved for cases where tumor resection may lead to significant neurological deficit [23, 24, 45]. It may jeopardize the treatment by allowing the continuous progression of the disease and there is the chance of underestimation of the tumor grade [33].

### Extent of resection

The largest surgical series comparing EOR and prognosis was made by a French multicenter and multidisciplinary study group (*Réseau d'Étude des Gliomes*), in which each center applied a different therapeutic approach along the timespan covered by this study [5]. A total of 1097 patients with DLGG were collected retrospectively since January 1985

and prospectively from 1996 up to December 2007. In multivariate analysis, the results of the study demonstrated that EOR, as well as postsurgical residual volume, were independent prognostic factors significantly associated with longer overall survival.

Until now, no randomized controlled trial assessing the different extent of resection rates and clinical outcomes has been conducted in patients with DLGG [45]. However, the current literature presents accumulating evidence to support the benefits of early surgical intervention. Additionally, it is unlikely that such a randomized trial will ever be performed for ethical reasons.

Two near-randomized series compared the OS of patients with DLGG in similar populations, exposed to distinct surgical approaches [23, 24, 45]. Jakola et al. [23] compared the results of parallel cohorts of DLGGs from 2 independent hospitals with different surgical strategies: in one hospital, only biopsy followed by a “wait and scan” approach was the first choice (66 patients—71% biopsy and 29% resection); in the other hospital, the early resections as the main conduct (87 patients—14% biopsy and 86% resection). They observed no significant differences in surgical complications (9% vs. 8%;  $p = .82$ ) or new deficits (18% vs. 21%;  $p = .70$ ) between the two institutions. However, the malignant transformation was more common when the biopsy was the initial approach (56% vs. 37%;  $p = 0.02$ ). There was also a relevant difference in median survival between the centers, at the center favoring biopsy it was 5.8 years and at the center favoring early resection, it was not reached ( $p < 0.001$ ), estimated 5-year survival was 57% vs. 81% respectively.

Roelz et al. [45] also published another near randomized study in a single institution series with two different departments (Department of Stereotactic Neurosurgery and Department of Neurosurgery) with different and independent approaches to DLGG patients. These patients were referred to either department by a near-randomized process. A total of 126 patients with DLGG entered the study, 77 patients were initially submitted to stereotactic biopsy, and 49 patients underwent an early surgical approach. They observed a significantly better OS for patients managed by early surgical management ( $p = 0.0018$ ). The 5/10-year OS rate was 82%/67% for early resection versus 54%/38% for initial biopsy. Interestingly, a later surgical intervention as performed in 22 patients initially submitted to only a biopsy (after a mean of 2.8 years) did not have a favorable impact on OS, making clear the high importance of the initial treatment decision. It is important to observe that the survival benefit of patients initially submitted to surgical resection was observed in patients with a residual tumor volume  $\leq 15 \text{ cm}^3$  ( $p = 0.034$ ).

Two recently published literature reviews deserve mention. Xia et al. [59] did a meta-analysis to assess the relationship between the extent of resection (EOR) and the prognosis of patients with DLGG. They selected 20 studies that fulfilled

their inclusion criteria and observed that, if compared with STR, GTR could significantly increase the 5-year survival of patients with DLGG (OR 3.90; 95% CI 2.79~5.45) and the 10-year survival (OR 7.91; 95% CI 5.12~12.22). Additionally, GTR significantly increased survival at 5-years when compared to biopsy only (OR 5.43; 95% CI 3.57~8.26) and 10-years (OR 10.17; 95% CI 4.02~25.71). Finally, when compared to the survival of patients with DLGG submitted to biopsy versus STR, the last one significantly increased survival at 5-years (OR 2.59; 95% CI 1.81~3.71) and 10-years (OR 2.21; 95% CI 1.16~4.25). Yang et al. [61] performed a systematic review and meta-analysis of papers analyzing the impact of EOR in DLGG. They included 60 reports (55 were retrospective, 5 prospective, and no randomized controlled trials) of adult patients with supratentorial DLGG, with 13,289 patients. They found that the mean OS increased from 3.79 years (95% CI 2.37~5.22) in the biopsy group to 6.68 years (95% CI 4.19~9.16) in the STR group and 10.65 years (95% CI 6.78~14.52) in the GTR group. They showed a benefit in OS associated with GTR versus biopsy ( $p < 0.001$ ); GTR versus STR ( $p < 0.001$ ); resection of any extent versus biopsy ( $p = 0.015$ ); and STR versus biopsy ( $p = 0.04$ ). The incidence of malignant transformation was 53.7% (95% CI 29.5~76.3) in the biopsy group, 47.5% (95% CI 30.3~65.4) in the STR group, and 15.9% (95% CI 4.2~44.7) in the GTR group. Compared with STR, GTR delayed the occurrence of malignant transformation significantly ( $p = 0.032$ ). Those reviews show that patients with DLGG are expected to benefit from a greater EOR if no new neurological deficit is associated with the procedure. The greater EOR also improve seizure control and delay malignant transformation [61]. Some of the limitations of those studies include no randomized trials available for analysis, the inclusion of old retrospective series, and poor criteria for the assessment of EOR (almost all of the studies defined EOR based on the impression of the surgeon or CT scan, instead of systematic assessment of pre and post-op MRI). Our review is the first in the literature to focus on a series of DLGG outcome with a meticulous assessment of EOR by MRI, what we believe to provide a better level of evidence.

Besides the improvement in OS and MPFS, a maximal EOR has also been associated with better control of seizure, which is a significant source of morbidity in DLGG patients. The review of Yang et al. [61] mentioned above also showed that the GTR group had an 81% seizure-free rate compared with 54.2% in the STR group and 47.8% in the biopsy group. Xu et al. [60] in a multivariate analysis of a series of 128 DLGG patients observed that the EOR was the only parameter to significantly affected the likelihood of postoperative Engel Class I status (all the subgroups of Class I) ( $p = 0.002$ ). They observed in a receiver operating characteristic (ROC) curve that the ideal threshold to seizure control was an EOR  $\geq 80\%$ , with approximately 94% of Engel Class I beyond this cutoff.

Still et al. [54] performed a similar study with 346 DLGG patients, and they also found in a multivariate analysis that a higher percent of tumor resection was independently associated with good postoperative seizure control ( $p < 0.001$ ). Based on a ROC curve they established an optimal cutoff of  $\geq 91.1\%$  of EOR and  $\leq 19 \text{ cm}^3$  of the residual tumor to obtain an optimal total seizure control (only Engel Class IA).

## Surgical goal

There is no consensus about the minimal extent of resection needed to obtain any significant clinical benefits. Smith et al. [52] observed a significant association between EOR and survival ( $p < 0.001$ ). They found that patients with at least 90% resection had 5- and 8-year OSs of 97% and 91%, respectively, whereas patients with less than 90% resection had 5- and 8-year OS rates of 76% and 60%, respectively. EOR remained a statistically significant predictor of OS even when the set of patients analyzed was limited to those with EOR of at least 80% ( $p = 0.016$ ).

Ius et al. [22] provided evidence that a more aggressive resection correlates with a significant improvement in OS ( $p = 0.001$ ), as well as in PFS ( $p < 0.0001$ ) and MPFS ( $p < 0.0001$ ), compared with a simple debulking procedure. The EOR, treated as both a continuous and an ordinal variable, was associated with significant improvement of both PFS and MPFS values. Patients with an EOR of less than 70% had a much higher risk of death (19.7 times), disease progression (13.6 times), and malignant transformation (9.77 times) than did patients with an EOR of 90% or more.

The largest investigation addressing the influence of EOR on prognosis suggested a residual tumor volume of fewer than  $10 \text{ cm}^3$  to be the crucial factor for a favorable prognosis, in particular, due to a delay of anaplastic transformation [5]. A large near-randomized series observed that the survival benefit of patients with initial resection was reserved for patients with a residual tumor volume of fewer than  $15 \text{ cm}^3$  [45].

In a more recent series, Scherer et al. [50] used volumetric analysis in order to quantitatively evaluate the association of RTV and EOR with survival and to address whether survival associations follow continuous or threshold-based principles. For OS, regression was limited to univariate analysis corroborating a significant impact of continuous volumetric measures RV ( $p < .001$ ) and EOR ( $p < .002$ ).

Although there is no consensus to how much of resection is “satisfactory,” and probably there is a linear association of the residual disease with survival, current evidence suggests that an extent of resection threshold of  $> 80\%$  and a residual volume of  $< 10 \text{ cm}^3$  or at least  $< 15 \text{ cm}^3$  as the surgical goal in DLGG needed to be of therapeutic benefit to individual patients [12, 21, 45, 52]. Although EOR and the final residual volume are independent factors associated with improved outcomes, we believe the final residual volume might be a more

reliable factor, since it is not dependent on the initial tumor volume—another important predictor of prognosis [12, 22, 32, 45, 52, 63].

As Scherer et al. [50] stated, to define minimum cutoffs is a reasonable approach to guide decision making preoperatively; however, dichotomization may lead to limited statistical information, to simplification of differences within dichotomized subgroups and, hence, oversimplification of the issue.

Different strategies can be used to try to estimate the percentage of the tumor able to be removed (EOR) or the probable final residual volume. The functional atlas of human white matter developed by Sarubbo et al. [48], based on the concept of “minimal common brain” [21], is a good example of a useful tool for such a goal. In a second publication, Sarubbo et al. [47] published a more complete atlas integrating both cortical hubs and white matter tracts critical for brain functions.

### Supratotal resection

The boundaries of DLGG cannot be precisely defined by current neuroimaging technology. Pallud et al. [40] studied 16 patients who underwent serial stereotactic biopsies for the diagnosis of untreated supratentorial DLGG, in whom biopsy samples were taken within and beyond MRI-defined abnormalities. They demonstrated that conventional MRI underestimates the actual spatial extent of DLGG, even when they are well delineated. Biopsies performed at distances of 10 to 20 mm from the limit of MRI-defined abnormalities showed a significantly larger number of tumor cells than biopsies at distances greater than 20 mm from MRI-defined abnormalities [21]. Therefore, the amount of brain containing tumor cells is larger than estimated by routine MR-sequences, which may explain recurrences at the resection margins after gross total surgical removal and the prognostic significance of the EOR [48]. These results support the idea that a functional-based extended resection encompassing a margin beyond MRI-defined abnormalities (ideally with 2 cm of margin) should be pursued whenever feasible, in non-eloquent brain areas. This might improve the outcome of DLGGs, by delaying anaplastic transformation [19, 40, 63]. All these aspects favored the creation of supratotal resection (SpTR) conception

Yordanova et al. [63] published a series of 15 patients with DLGG submitted to SpTR and observed that the margin of the resected brain tissue showed tumoral cells in all but 1 case, strengthening the theory that conventional MR imaging (even in FLAIR) underestimates the real extension of these lesions. They hypothesized that SpTR approach would reduce even more the tumoral burden, and consequently improve the OS and MPFS. Based on intraoperative mapping, they extended the resection up to functional boundaries at the cortical and subcortical levels. They compared these 15 patients submitted

to SpTR with a control group of 29 patients of “only” complete resection and observed that malignant transformation was observed in 7 cases in the control group but in no case in the SpTR group ( $p = 0.037$ ). Furthermore, adjuvant treatment was administered in 10 patients in the control group compared with only one patient in the SpTR group ( $p = 0.043$ ). The mean duration of postoperative follow-up was 35.7 months (range 6–135 months)[58]. The same group published a series of long-term follow up (mean of 11 years, range, 8–16.5 years) in 16 patients with DLGG submitted to SpTR [49]. No patient was submitted to adjuvant treatment. There was no relapse in eight cases. Eight patients experienced tumor recurrence after an average time of 70.3 months (range, 32–105 months), but without malignant transformation [14].

Although the SpTR is not possible in most cases because of the proximity with eloquent areas, it should be pursued whenever possible, because it might positively change the natural history of DLGG, by decreasing the risk of malignant transformation (MT) for a long period

### Functional aspects related to EOR

Despite all evidences presented in favor of a broad EOR of the tumor, maximal EOR or even supratotal resection should only be favored in connection with preservation of neurological and neurocognitive functions. A new permanent neurological deficit may also influence the overall survival, and then must be prevented.

There is an increased amount of evidences showing the benefit of brain mapping in awake surgeries for DLGG, in preserving a good quality of life/return to work in patients submitted to a maximal EOR or even supratotal resection.

Aiming to assess the postoperative cognitive function and ability to work in patients with DLGG, Muto et al. [34] published a series with 39 cases involving eloquent areas and having a functional-based maximal surgical resection under awake procedures. The mean EOR was 91.0% (total or supratotal resection in 46.2% of cases) and the mean residual volume was 4.8 cm<sup>3</sup>. They observed functional worsening in 89.7% of patients in the early postoperative period (no relation with the EOR,  $p = 0.216$ ). In long-term cognitive outcomes, none of the patients without preoperative cognitive deficit had a postoperative cognitive deficit; and in the patients with a preoperative cognitive deficit, 44.4% improved, 36.1% remained stable, and 27.8% worsened as compared to the preoperative evaluation. A total of 28/34 patients (82.4%) with preoperative remunerative employment resumed their previous job. The mean time between surgery and return to work was 6.9 months. Subtotal and total resection ( $p = 0.014$  and  $p = 0.019$  respectively) were independently associated with postoperative return to work. They conclude that functional-based surgical resection does not worsen

postoperative cognitive evaluations and even may improve postoperative cognitive evaluations in these patients.

Ng et al. [35], in a series of 74 asymptomatic patients with incidental DLGG submitted to maximal safe resection in awake craniotomies, observed that 3 months after surgery, all patients had totally recovered from transient neurological worsening (no permanent deficits). The mean EOR was 95.7% (total or supratotal resection in 58.1% of cases), with a mean residual tumor volume of 1.3 cm<sup>3</sup>. Among the 68 employed patients preoperatively, 66 (97.1%) resumed their previous employment. The mean time between awake surgery and return to work was 6.8 months. They observed that the time between surgery and return to work did not statistically correlate with the EOR. They argue in favor of a preventive and maximal safe resection of DLGGs.

Rossi et al. [46] reported a large series of SpTR for DLGG aiming to investigate functional outcome based on an analysis of neuropsychological and quality of life profiles when resection was performed according to functional boundaries in awake craniotomies. In a total of 449 patients (79.5% of DLGG), they achieved SpTR in 145 patients (32.3%), total resection in 183 patients (40.8%), and subtotal/partial resection in 121 patients (26.9%). They observed that the rates of new (within the first week of surgery) deficits were quite high (88.9% in all group; 91.7% in partial/subtotal resection group; 88% in total resection group; and 87.6% in supratotal resection group) and independent from the EOR achieved ( $p = 0.498$ ). Most deficits recovered in a few weeks. The incidence of permanent deficit (persistent at 1 month after surgery) was low (2% in all group; 6.6% in partial/subtotal resection group; 0.55% in total resection group; and 0.69% in supratotal resection group), but was significantly higher in the subtotal/partial resection group versus the total/supratotal group ( $p < 0.001$ ). They concluded that the SpTR can be safely achieved in a considerable number of patients in the clinical routine when a functional approach is used.

### Adjuvant treatment in DLGG

There is no defined approach to adjuvant therapy in DLGG. In young patients, whose tumors have a favorable molecular profile and who have undergone a total or supratotal resection, it is safe to not offer additional therapy initially. However, in older patients with significant residual tumor, additional treatment should be considered. Buckner et al. [3] published a series of 251 DLGG patients with a median follow-up time of the surviving patients of 11.9 years. Patients who were 18 to 39 years of age (with subtotal resection or biopsy), and those who were 40 years of age or older were randomized to receive radiotherapy alone or radiotherapy plus chemotherapy (PCV—procarbazine, CCNU, and vincristine). This phase 3 trial showed a survival benefit among patients with DLGG who were treated with radiation therapy plus chemotherapy,

as compared with those who received radiation therapy alone. They also demonstrated that patients with tumoral IDH1 mutations had a significantly longer OS in the group treated with radiotherapy plus chemotherapy. [3] We cannot fail to mention the risks of late cognitive decline related to radiotherapy and the adverse events of chemotherapy. Buckner et al [3] also demonstrated, as expected, that the frequency and severity of toxic effects were greater in the group that received radiation therapy plus chemotherapy than in the group that received radiation therapy alone.

This is the reason why the EORTC group has recently proposed to use MGMT methylation score in order to “identify patients who benefit from first-line treatment with TMZ, to defer RT for long-term preservation of cognitive function and quality of life.” [2]. Indeed, thanks to a maximal safe resection up to functional boundaries, it is possible to postpone adjuvant treatment, especially radiotherapy, to preserve a better cognition—according to the needs of the patient—including in DLGG with foci of malignant transformation, as shown by Darlix et al. [11] in a series with 50 patients with 95% of survival at 5 years. In their series, the median time interval between surgery and the initiation of new treatment was 3.4 years (median time interval of 9.5 years between RT and the first surgery) [11]. In this state of mind, Mandonnet et al. [30] published a recursive algorithm to guide an individualized treatment: although no adjuvant treatment is recommended when a complete resection has been achieved, in case of initial biopsy and limited resection, epilepsy relapse and/or re-evolution of the tumor with a volume above 15 cm<sup>3</sup> and/or growth rate acceleration, further treatment can be considered. The first option is re-operation, if it is estimated that a significant degree of resection as mentioned above is possible, without a higher risk of neurological deficit. If further surgery is not feasible, chemotherapy is considered. If the lesion remains radiologically stable with chemotherapy, one can only follow the patient with neuroimaging. If there is a reduction in tumor volume, the possibility of a new surgery may be re-considered. Radiotherapy should be considered in cases where there is no response to chemotherapy and if there is no possibility of a new surgery.

To conclude, in the recent literature, adjuvant treatment after surgery for DLGG is still matter of debate [15].

### Role of molecular signature

The WHO 2016 edition has radically changed the classification of gliomas, updated based on molecular markers, which offers more precise prognostication and prediction of treatment response [28]. Gliomas are therefore classified using a layered diagnosis according to histologic as well as molecular criteria into astrocytomas and oligodendrogliomas [4, 28]. The main change in classification of histological DLGG is the presence or not of a mutation at the isocitrate

dehydrogenase (IDH 1 or IDH 2; IDHmt henceforth for a mutation in either IDH1 or IDH2) and the presence or not of 1p19q codeletion. That allows classification into three distinct groups of DLGG [21, 27, 42, 47, 55]:

1. IDH mutated with 1p and 19q codeletion—oligodendroglioma. They are associated with favorable outcomes [16, 21]. Median overall survival may be more than 14 years, up to 17.1 years in some series [4, 7].
2. IDH mutated with no 1p and 19q codeletion—IDH mutated astrocytoma. Median overall survival of 9 to 11 years [4, 7, 58].
3. IDH not mutated—IDH wild-type astrocytoma. A more aggressive form of low-grade glioma. Its prognosis may be similar to that of glioblastoma [46]. Median overall survival of 1.7 to 2.1 years [21, 43, 47]. However, it may present a heterogeneous median survival, per mutation, e.g., TERT mutant—1.76 years, TERT wt—10.65 years) [7].

#### The effect of EOR or RTV in OS at different DLGG groups (WHO 2016)

Jungk et al. [25] evaluated the prognostic impact of EOR in astrocytomas stratified with IDH1mt (38 patients). IDH1 mutation was an independent positive prognosticator for OS in multivariate analysis ( $p = 0.002$ ). In a subgroup of patients with  $\geq 40\%$  EOR ( $n = 39$ ), initial and residual tumor volumes were prognostic for OS (HR 1.03,  $p = 0.005$  and HR 1.08,  $p = 0.007$ , respectively), persistent after adjustment for IDH1 mutation status.

Five years after the first publication of their series, Jakola et al. [24] published new analyses of their cohort now in light of the established molecular markers, dividing patients into 3 groups: (1) the low-risk group being IDH mutated, 1p19q codeleted; (2) the intermediate-risk group being IDH mutated and 1p19q non-codeleted; and (3) the high-risk group being IDH wild-type. They found that the survival benefit of surgical strategy remained after adjustment for molecular groups ( $p = 0.001$ ), supporting the results of their previous publication. They concluded that surgical resection is effective in all molecular subgroups.

Patel et al. [41] aiming to assess the impact of EOR on MPFS and OS in IDHmt and IDHwt DLGG performed a retrospective review of 74 patients (two groups: 52 IDH1 mutations and 22 IDH wild-type) with WHO grade II gliomas undergoing resection at a single institution. The 3-year OS rate was 95.2% in IDHmt patients' versus 64.2% in the IDHwt group. Patients with IDHmt had correspondingly longer median MPFS (6.5 years) and median OS (10.9 years) versus IDHwt patients (median MPFS: 3.2 years, median OS: not reached). Greater EOR was the only variable assessed that

prolonged MPFS ( $p = 0.009$ ) and OS ( $p = 0.03$ ) (150). However, when they performed an age-adjusted Cox regression model, stratified by IDH mutation status revealed that a greater EOR was only associated with prolonged MPFS and OS in IDHwt patients (MPFS— $p < 0.001$  and OS— $p = 0.003$ ), but not for IDHmt patients (MPFS— $p = 0.83$  and OS— $p = 0.48$ ). Therefore, greater EOR seems to be particularly associated with improved survival in a subgroup of DLGG with IDHwt status. Although these are interesting results, they should be carefully interpreted and the limitations of the study need to be considered, such as a small number of patients, retrospective nature of the study, baseline differences between groups, and short follow up.

Wijnenga et al. [58] (Table 1) studied the correlation of molecular profiles and RTV on OS. In a univariate analysis of the whole, the amount of postoperative RTV (as a continuous variable) was significantly associated with OS, with a hazard ratio (HR) of 1.01 per 1 cm<sup>3</sup> increase in volume ( $p < 0.0001$ ). However, there was a different impact of the RTV in astrocytomas (IDHmt, 1p19q retained) versus oligodendrogliomas (IDHmt, 1p19q codeleted). In the astrocytoma group, even with minimal residual volume (0.1–5.0 cm<sup>3</sup>), OS was impaired compared with no residual tumor (0.0 cm<sup>3</sup>). In the oligodendroglioma group, a trend toward better OS with more extensive resection was observed, although there was no significant improvement in OS in patients with GTR versus small residual tumor (0.1–5.0 cm<sup>3</sup>).

Poulen et al. [43] performed a retrospective review of 31 patients who underwent resection for histopathologically confirmed, IDHwt, non-1p19q codeleted gliomas. No patient received immediate postoperative adjuvant treatment, according to the authors due to the high extent of resection (94% on average) and because these grade II astrocytoma patients were managed before the new 2016 WHO classification. The median velocity of diameter expansion (VDE) was 2.45 mm/year (range 0.4–5 mm/year). The median follow-up was 74 months (range 24–157 months). They observed substantial heterogeneity in survival (OS at 5 years was 77.3% for the entire group). However, two groups were identified: subgroup 1 with 5 patients who underwent subtotal resection and died rapidly (median time from radiological diagnosis of 3.5 years); subgroup 2, no death of 21 patients with a long-term follow up over 5 years (2 patients with more than 10 years of follow up). Those results suggest that greater EOR may improve OS outcomes even in the absence of IDH mutation and 1p19q codeletion.

Eseonu et al. [17] assessed the role of EOR on OS based on genetic classification of DLGG: type 1 (IDHmt, 1p19q codeleted), type 2 (IDH1mt, TP53 mutation, ATRX mutation), and type 3 (IDHwt). They found that EOR was significantly associated with OS for type 1 DLGG with an EOR  $\geq 70\%$  ( $p < 0.001$ ). EOR was also significantly associated with OS for type 3 DLGG with an EOR  $\geq 79\%$  ( $p = 0.040$ ).

However, they did not contain sufficient type 2 DLGG patients to conduct an EOR survival analysis. They concluded that this different EOR cutoff suggests that the genetic makeup of a DLGG could influence how effective the EOR is on survival.

Scherer et al. [50] found that IDHmt had a significant association with OS ( $p = 0.005$ ), and that GTR had a beneficial effect on OS regardless of the molecular profile (based on IDH or 1p19q). Possible implications of molecular biomarkers on surgical efficacy and EOR could not be found.

As shown above, greater EOR is related to a better OS when all DLGG are analyzed as a single group (independent of molecular subtypes). EOR has also been proven to significantly affect survival, after the establishment of molecular biomarkers [24, 58], which we believe it is true. However, the question is how beneficial the degree of resection is for each subgroup. Possibly groups with a less favorable prognosis profile benefit more from a wider resection.

### The molecular signature influence in the EOR or RTV

The relationship of EOR and glioma molecular markers, such as the 1p19q codeletion or IDH mutation, is not clear [10]. Probably, as seen in Table 3, favorable molecular markers are not related to a greater EOR. Cordier et al. [10] observed a statistical significance of lower EOR in patients with codeletion 1p19q, which reinforces the idea that a greater EOR is an important prognostic factor per se, independently of the molecular pattern.

### Limitations of the review

Some of the limitations of our review are (1) the absence of randomized trials since none available in the literature. (2) We established an arbitrary cutoff of 100 patients as an inclusion criterion of our systematic review, which may exclude important smaller series. (3) We did not analyze the PFS reported in the series. Although it is a very used outcome, we believe it is not accurate enough because the DLGG presents continuous growth (so there is not a real-time with progression-free survival) and the definition of this parameter is heterogeneous in literature. (4) Among the papers added in this review, we may observe a wide variety of WHO classification (range from WHO 1993 to WHO 2016).

### Conclusion

Our study reviews the results of large, modern series that assessed the impact of EOR on the outcome of patients with DLGG. Although there are similar studies, this is the first review to combine all series that performed pre and postoperatively MRI analysis of the tumor and all series that also

performed volumetric analysis. We could observe for the first time that all series with a rigorous analysis of the tumor volume with volumetric assessment were unanimous in demonstrating that the higher the EOR the better the prognosis.

Surgery remains the first treatment option for the management of low-grade gliomas. There is accumulating evidence that supports early surgical resection rather than the classic conservative “wait and see” approach or stereotactic biopsy.

A better understanding of the different molecular signature demonstrates the heterogeneity of DLGG. Current data suggest a benefit of maximum safe resection for all different subtypes; however, “radical surgery” may be associated with better OS and MPFS in tumors with a more aggressive signature (IDHwt tumors; or IDH mutated non-codeleted tumors). Further understanding of the behavior and response to treatment of different DLGG subtypes will likely have an impact on treatment strategies shortly, with the advent of target therapies and new radiotherapy modalities and protocols. The incorporation of those modalities, the development of surgical techniques, and further understanding of the brain connectome may contribute to a significant improvement not only in patients’ survival but also in the quality of life.

**Authors contribution** LAFA: Conceptualization, methodology, investigation, resources, writing—original draft, writing—review and editing, supervision, project administration. JPA: conceptualization, investigation, resources, writing—original draft, writing—review and editing, supervision. LJMMF: methodology, resources, writing—original draft, writing—review and editing. AFJ: writing—original draft, writing—review and editing, supervision. HD: writing—original draft, writing—review and editing, supervision.

**Funding information** This research received no specific grant from any funding agency in the public, commercial, or not-for-profit sectors.

### Compliance with ethical standards

**Conflict of interest** All authors have no conflict of interest to report. This is an original unpublished article that does not transgress any copyright or intellectual property rights of other people and it is not being evaluated for publication in other journals.

**Ethical approval** The research is a literature review. It did not involve human participants, for submission at the Ethical approval.

**Informed consent** The research is a literature review. It did involve human participants directly, only from another published series.

### References

- Ahmadi R, Dictus C, Hartmann C, Zurn O, Edler L, Hartmann M et al (2009) Long-term outcome and survival of surgically treated supratentorial low-grade glioma in adult patients. *Acta Neurochir* 151(11):1359–1365
- Bady P, Kurscheid S, Delorenzi M, Goria T, van den Bent MJ, Hoang-Xuan K, Vauléon É, Gijtenbeek A, Enting R, Thiessen B,



- Chinot O, Dhermain F, Brandes AA, Reijneveld JC, Marosi C, Taphoorn MJB, Wick W, von Deimling A, French P, Stupp R, Baumert BG, Hegi ME (2018) The DNA methylome of DDR genes and benefit from RT or TMZ in IDH mutant low-grade glioma treated in EORTC 22033. *Acta Neuropathol* 135(4):601–615. <https://doi.org/10.1007/s00401-018-1810-6>
3. Buckner JC, Shaw EG, Pugh SL, Chakravarti A, Gilbert MR, Barger GR, Coons S, Ricci P, Bullard D, Brown PD, Stelzer K, Brachman D, Suh JH, Schultz CJ, Bahary JP, Fisher BJ, Kim H, Murtha AD, Bell EH, Won M, Mehta MP, Curran WJ Jr (2016) Radiation plus Procarbazine, CCNU, and Vincristine in Low-Grade Glioma. *N Engl J Med* 374(14):1344–1355. <https://doi.org/10.1056/NEJMoa1500925>
  4. Cancer Genome Atlas Research N, Brat DJ, Verhaak RG, Aldape KD, Yung WK, Salama SR et al (2015) Comprehensive, integrative genomic analysis of diffuse lower-grade gliomas. *N Engl J Med* 372(26):2481–2498
  5. Capelle L, Fontaine D, Mandonnet E, Taillandier L, Golmard JL, Bauchet L, Pallud J, Peruzzi P, Baron MH, Kujas M, Guyotat J, Guillevin R, Frenay M, Taillibert S, Colin P, Rigau V, Vandebos F, Pinelli C, Duffau H, \_\_ Spontaneous and therapeutic prognostic factors in adult hemispheric World Health Organization Grade II gliomas: a series of 1097 cases: clinical article. *J Neurosurg* 2013;118(6):1157–1168.
  6. Chaichana KL, McGirt MJ, Latta J, Olivi A, Quiñones-Hinojosa A (2010 Jan) Recurrence and malignant degeneration after resection of adult hemispheric low-grade gliomas. *J Neurosurg* 112(1):10–17. <https://doi.org/10.3171/2008.10.JNS08608>
  7. Clark VE, Cahill DP (2019) Extent of Resection Versus Molecular Classification: What Matters When? *Neurosurg Clin N Am* 30(1):95–101
  8. Claus EB, Horlacher A, Hsu L, Schwartz RB, dello-Iacono D, Talos F, Jolesz FA, Black PM (2005) Survival rates in patients with low-grade glioma after intraoperative magnetic resonance image guidance. *Cancer*. 103(6):1227–1233. <https://doi.org/10.1002/cncr.20867>
  9. Coburger J, Merkel A, Scherer M, Schwartz F, Gessler F, Roder C, Pala A, König R, Bullinger L, Nagel G, Jungk C, Bisdas S, Nabavi A, Ganslandt O, Seifert V, Tatagiba M, Senft C, Mehdorn M, Unterberg AW, Rössler K, Wirtz CR (2016 Jun) Low-grade glioma surgery in intraoperative magnetic resonance imaging: results of a multicenter retrospective assessment of the German study group for intraoperative magnetic resonance imaging. *Neurosurgery*. 78(6):775–786. <https://doi.org/10.1227/NEU.0000000000001081>
  10. Cordier D, Goze C, Schadelin S, Rigau V, Mariani L, Duffau H (2015) A better surgical resectability of WHO grade II gliomas is independent of favorable molecular markers. *J Neuro-Oncol* 121(1):185–193
  11. Darlix A, Rigau V, Fraisse J, Gozé C, Fabbro M, Duffau H (2020) Postoperative follow-up for selected diffuse low-grade gliomas with WHO grade III/IV foci. *Neurology* 94(8):e830–e841
  12. Duffau H, Lopes M, Arthuis F, Bitar A, Sichez JP, Van Effenterre R et al (2005) Contribution of intraoperative electrical stimulations in surgery of low grade gliomas: a comparative study between two series without (1985–96) and with (1996–2003) functional mapping in the same institution. *J Neurol Neurosurg Psychiatry* 76(6):845–851
  13. Duffau H, Taillandier L (2015) New concepts in the management of diffuse low-grade glioma: proposal of a multistage and individualized therapeutic approach. *Neuro-oncology* 17(3):332–342
  14. Duffau H (2016) Long-term outcomes after supratotal resection of diffuse low-grade gliomas: a consecutive series with 11-year follow-up. *Acta Neurochir* 158(1):51–58
  15. Duffau H (2018) Paradoxes of evidence-based medicine in lower-grade glioma: to treat the tumor or the patient? *Neurology* 91(14):657–662. <https://doi.org/10.1212/WNL.0000000000006288>
  16. Eckel-Passow JE, Lachance DH, Molinaro AM, Walsh KM, Decker PA, Sicotte H, Pekmezci M, Rice T, Kosel ML, Smirnov IV, Sarkar G, Caron AA, Kollmeyer TM, Praska CE, Chada AR, Halder C, Hansen HM, McCoy LS, Bracci PM, Marshall R, Zheng S, Reis GF, Pico AR, O'Neill BP, Buckner JC, Giannini C, Huse JT, Perry A, Tihan T, Berger MS, Chang SM, Prados MD, Wiemels J, Wiencke JK, Wrensch MR, Jenkins RB (2015) Glioma groups based on 1p/19q, IDH, and TERT promoter mutations in tumors. *N Engl J Med* 372(26):2499–2508
  17. Eseonu CI, Eguia F, ReFaey K, Garcia O, Rodriguez FJ, Chaichana K, Quiñones-Hinojosa A (2017) Comparative volumetric analysis of the extent of resection of molecularly and histologically distinct low grade gliomas and its role on survival. *J Neuro-Oncol* 134(1):65–74. <https://doi.org/10.1007/s11060-017-2486-9>
  18. Franceschi E, Mura A, De Biase D, Tallini G, Pession A, Foschini MP et al (2018) The role of clinical and molecular factors in low-grade gliomas: what is their impact on survival? *Future Oncol* 14(16):1559–1567
  19. Gerin C, Pallud J, Deroulers C, Varlet P, Oppenheim C, Roux FX, Chretien F, Thomas SR, Grammaticos B, Badoual M (2013) Quantitative characterization of the imaging limits of diffuse low-grade oligodendrogliomas. *Neuro-oncology*. 15(10):1379–1388
  20. Gousias K, Schramm J, Simon M (2014) Extent of resection and survival in supratentorial infiltrative low-grade gliomas: analysis of and adjustment for treatment bias. *Acta Neurochir* 156(2):327–337. <https://doi.org/10.1007/s00701-013-1945-0>
  21. Hervey-Jumper SL, Berger MS (2019) Evidence for improving outcome through extent of resection. *Neurosurg Clin N Am* 30(1):85–93
  22. Ius T, Angelini E, Thiebaut de Schotten M, Mandonnet E, Duffau H (2011) Evidence for potentials and limitations of brain plasticity using an atlas of functional resectability of WHO grade II gliomas: towards a "minimal common brain". *NeuroImage* 56(3):992–1000
  23. Jakola AS, Myrnes KS, Kloster R, Torp SH, Lindal S, Unsgard G et al (2012) Comparison of a strategy favoring early surgical resection vs a strategy favoring watchful waiting in low-grade gliomas. *Jama* 308(18):1881–1888
  24. Jakola AS, Skjulsvik AJ, Myrnes KS, Sjavik K, Unsgard G, Torp SH et al (2017) Surgical resection versus watchful waiting in low-grade gliomas. *Ann Oncol* 28(8):1942–1948
  25. Jungk C, Scherer M, Mock A, Capper D, Radbruch A, von Deimling A, Bendszus M, Herold-Mende C, Unterberg A (2016) Prognostic value of the extent of resection in supratentorial WHO grade II astrocytomas stratified for IDH1 mutation status: a single-center volumetric analysis. *J Neuro-Oncol* 129(2):319–328
  26. Liu S, Wang Y, Fan X, Ma J, Ma W, Wang R, Jiang T (2016) Anatomical involvement of the subventricular zone predicts poor survival outcome in low-grade astrocytomas. *PLoS One* 11(4)
  27. Louis DN, Perry A, Burger P, Ellison DW, Reifenberger G, von Deimling A, Aldape K, Brat D, Collins VP, Eberhart C, Figarella-Branger D, Fuller GN, Giangaspero F, Giannini C, Hawkins C, Kleihues P, Korshunov A, Kros JM, Beatriz Lopes M, Ng HK, Ohgaki H, Paulus W, Pietsch T, Rosenblum M, Rushing E, Soylemezoglu F, Wiestler O, Wesseling P, International Society Of Neuropathology–Haarlem (2014) International Society Of Neuropathology–Haarlem consensus guidelines for nervous system tumor classification and grading. *Brain Pathol* 24(5):429–435
  28. Louis DN, Perry A, Reifenberger G, von Deimling A, Figarella-Branger D, Cavenee WK, Ohgaki H, Wiestler OD, Kleihues P, Ellison DW (2016) The 2016 World Health Organization Classification of Tumors of the Central Nervous System: a summary. *Acta Neuropathol* 131(6):803–820
  29. Mandonnet E, Delattre JY, Tanguy ML, Swanson KR, Carpentier AF, Duffau H, Cornu P, van Effenterre R, Alvard EC, Capelle L (2003) Continuous growth of mean tumor diameter in a subset of grade II gliomas. *Ann Neurol* 53(4):524–528

30. Mandonnet E, Duffau H (2018) An attempt to conceptualize the individual onco-functional balance: why a standardized treatment is an illusion for diffuse low-grade glioma patients. *Crit Rev Oncol Hematol* 122:83–91
31. Mandonnet E, Pallud J, Fontaine D, Taillandier L, Bauchet L, Peruzzi P, Guyotat J, Bernier V, Baron MH, Duffau H, Capelle L (2010) Inter-and inpatients comparison of WHO grade II glioma kinetics before and after surgical resection. *Neurosurg Rev* 33(1): 91–96
32. McGirt MJ, Chaichana KL, Attenello FJ, Weingart JD, Than K, Burger PC et al (2008) Extent of surgical resection is independently associated with survival in patients with hemispheric infiltrating low-grade gliomas. *Neurosurgery*. 63(4):700–707 author reply 7-8
33. Muragaki Y, Chernov M, Maruyama T, Ochiai T, Taira T, Kubo O, Nakamura R, Iseki H, Hori T, Takakura K (2008) Low-grade glioma on stereotactic biopsy: how often is the diagnosis accurate? *Minim Invas Neurosurg* 51(5):275–279
34. Muto J, Dezamis E, Rigaux-Viode O, Peeters S, Roux A, Zanello M, Mellerio C, Sauvageon X, Varlet P, Oppenheim C, Pallud J (2018) Functional-based resection does not worsen quality of life in patients harboring a diffuse low-grade glioma involving eloquent brain regions: a prospective cohort study. *World Neurosurg* 113: e200–e212. <https://doi.org/10.1016/j.wneu.2018.01.213>
35. Ng S, Herbet G, Moritz-Gasser S, Duffau H. Return to work following surgery for incidental diffuse low-grade glioma: a prospective series with 74 patients. *Neurosurgery*. 2019 9:nyz513. doi: <https://doi.org/10.1093/neuros/nyz513>. Online ahead of print.PMID: 31813972
36. Nitta M, Muragaki Y, Maruyama T, Ikuta S, Komori T, Maebayashi K, Iseki H, Tamura M, Saito T, Okamoto S, Chernov M, Hayashi M, Okada Y (2015) Proposed therapeutic strategy for adult low-grade glioma based on aggressive tumor resection. *Neurosurg Focus* 38(1):E7
37. Nitta M, Muragaki Y, Maruyama T, Iseki H, Ikuta S, Konishi Y, Saito T, Tamura M, Chernov M, Watanabe A, Okamoto S, Maebayashi K, Mitsuhashi N, Okada Y (2013) Updated therapeutic strategy for adult low-grade glioma stratified by resection and tumor subtype. *Neurol Med Chir (Tokyo)* 53(7):447–454
38. Pallud J, Blonski M, Mandonnet E, Audureau E, Fontaine D, Sanaï N, Bauchet L, Peruzzi P, Frenay M, Colin P, Guillevin R (2013) Velocity of tumor spontaneous expansion predicts long-term outcomes for diffuse low-grade gliomas. *Neuro-oncology* 15(5):595–606
39. Pallud J, Mandonnet E, Duffau H, Kujas M, Guillevin R, Galanaud D, Taillandier L, Capelle L (2006) Prognostic value of initial magnetic resonance imaging growth rates for World Health Organization grade II gliomas. *Ann Neurol* 60(3):380–383
40. Pallud J, Varlet P, Devaux B, Geha S, Badoual M, Deroulers C, Page P, Dezamis E, Dumas-Duport C, Roux FX (2010) Diffuse low-grade oligodendrogliomas extend beyond MRI-defined abnormalities. *Neurology* 74(21):1724–1731
41. Patel T, Bander ED, Venn RA, Powell T, Cederquist GY, Schaefer PM et al (2018) The role of extent of resection in IDH1 wild-type or mutant low-grade gliomas. *Neurosurgery* 82(6):808–814
42. Pekmezci M, Rice T, Molinaro AM, Walsh KM, Decker PA, Hansen H, Sicotte H, Kollmeyer TM, McCoy LS, Sarkar G, Perry A, Giannini C, Tihan T, Berger MS, Wiemels JL, Bracci PM, Eckel-Passow JE, Lachance DH, Clarke J, Taylor JW, Luks T, Wiencke JK, Jenkins RB, Wrensch MR (2017) Adult infiltrating gliomas with WHO 2016 integrated diagnosis: additional prognostic roles of ATRX and TERT. *Acta Neuropathol* 133(6):1001–1016
43. Poulenc G, Goze C, Rigau V, Duffau H (2018) Huge heterogeneity in survival in a subset of adult patients with resected, wild-type isocitrate dehydrogenase status, WHO grade II astrocytomas. *J Neurosurg*:1–10
44. Rezvan A, Christine D, Christian H, Olga Z, Lutz E, Marius H, Stephanie C, Christel HM, Rainer WC, Andreas U (2009) Long-term outcome and survival of surgically treated supratentorial low-grade glioma in adult patients. *Acta Neurochir* 151(11):1359–1365. <https://doi.org/10.1007/s00701-009-0435-x>
45. Roelz R, Strohmaier D, Jabbarli R, Kraeutle R, Egger K, Coenen VA et al (2016) Residual tumor volume as best outcome predictor in low grade glioma—a nine-years near-randomized survey of surgery vs. biopsy. *Sci Rep* 6:32286
46. Rossi M, Ambrogi F, Gay L, Gallucci M, Conti Nibali M, Leonetti A, Puglisi G, Sciortino T, Howells H, Riva M, Pessina F, Navarra P, Franzese C, Simonelli M, Rudà R, Bello L (2019) Is supratotal resection achievable in low-grade gliomas? Feasibility, putative factors, safety, and functional outcome. *J Neurosurg* 17:1–14. <https://doi.org/10.3171/2019.2.JNS183408>
47. Sahn F, Schrimpf D, Jones DT, Meyer J, Kratz A, Reuss D et al (2016) Next-generation sequencing in routine brain tumor diagnostics enables an integrated diagnosis and identifies actionable targets. *Acta Neuropathol* 131(6):903–910
48. Sarubbo S, De Benedictis A, Merler S, Mandonnet E, Balbi S, Granieri E et al (2015) Towards a functional atlas of human white matter. *Hum Brain Mapp* 36(8):3117–3136
49. Sarubbo S, Tate M, De Benedictis A et al (2020) Mapping critical cortical hubs and white matter pathways by direct electrical stimulation: an original functional atlas of the human brain. *Neuroimage* 205:116237
50. Scherer M, Ahmeti H, Roder C, Gessler F, Jungk C, Pala A, Mayer B, Senft C, Tatagiba M, Synowitz M, Wirtz CR, Unterberg AW, Coburger J (2019) Surgery for Diffuse WHO Grade II Gliomas: Volumetric analysis of a multicenter retrospective cohort from the German study group for intraoperative magnetic resonance imaging. *Neurosurgery* 1:nyz397. <https://doi.org/10.1093/neuros/nyz397>
51. Schomas DA, Laack NN, Rao RD, Meyer FB, Shaw EG, O'Neill BP, Giannini C, Brown PD (2009) Intracranial low-grade gliomas in adults: 30-year experience with long-term follow-up at Mayo Clinic. *Neuro-Oncology* 11(4):437–445. <https://doi.org/10.1215/15228517-2008-102>
52. Smith JS, Chang EF, Lamborn KR, Chang SM, Prados MD, Cha S, Tihan T, VandenBerg S, McDermott MW, Berger MS (2008) Role of extent of resection in the long-term outcome of low-grade hemispheric gliomas. *J Clin Oncol* 26(8):1338–1345
53. Soffietti R, Baumert BG, Bello L, von Deimling A, Duffau H, Frenay M et al (2010) Guidelines on management of low-grade gliomas: report of an EFNS-EANO Task Force. *Eur J Neurol* 17(9):1124–1133
54. Still ME, Roux A, Huberfeld G, Bauchet L, Baron MH, Fontaine D, Blonski M, Mandonnet E, Guillevin R, Guyotat J, Taillandier L (2019) Extent of resection and residual tumor thresholds for post-operative total seizure freedom in epileptic adult patients harboring a supratentorial diffuse low-grade glioma. *Neurosurgery* 85(2): E332–E340
55. Theeler BJ, Yung WK, Fuller GN, De Groot JF (2012) Moving toward molecular classification of diffuse gliomas in adults. *Neurology* 79(18):1917–1926
56. van den Bent MJ, Smits M, Kros JM, Chang SM (2017) Diffuse infiltrating oligodendroglioma and astrocytoma. *J Clin Oncol* 35(21):2394–2401
57. van den Bent MJ (2010) Interobserver variation of the histopathological diagnosis in clinical trials on glioma: a clinician's perspective. *Acta Neuropathol* 120(3):297–304
58. Wijnenga MMJ, French PJ, Dubbink HJ, Dinjens WNM, Atmodimedjo PN, Kros JM, Smits M, Gahrman R, Rutten GJ, Verheul JB, Fleischeuer R, Dirven CMF, Vincent AJPE, van den Bent MJ (2018) The impact of surgery in molecularly defined low-

- grade glioma: an integrated clinical, radiological, and molecular analysis. *Neuro-oncology* 20(1):103–112
59. Xia L, Fang C, Chen G, Sun C (2018) Relationship between the extent of resection and the survival of patients with low-grade gliomas: a systematic review and meta-analysis. *BMC Cancer* 18(1): 48
  60. Xu DS, Awad AW, Mehalechko C, Wilson JR, Ashby LS, Coons SW, Sanai N (2018) An extent of resection threshold for seizure freedom in patients with low-grade gliomas. *J Neurosurg* 128(4): 1084–1090
  61. Yang K, Nath S, Koziarz A, Badhiwala JH, Ghayur H, Sourour M, Catana D, Nassiri F, Alotaibi MB, Kameda-Smith M, Manoranjan B, Aref MH, Mansouri A, Singh S, Almenawer SA (2018) Biopsy versus subtotal versus gross total resection in patients with low-grade glioma: a systematic review and meta-analysis. *World Neurosurgery* 120:e762–ee75
  62. Yeh SA, Ho JT, Lui CC, Huang YJ, Hsiung CY, Huang EY (2005) Treatment outcomes and prognostic factors in patients with supratentorial low-grade gliomas. *Br J Radiol* 78(927):230–235
  63. Yordanova YN, Moritz-Gasser S, Duffau H (2011) Awake surgery for WHO Grade II gliomas within "noneloquent" areas in the left dominant hemisphere: toward a "supratotal" resection. *Clinical article. J Neurosurg* 115(2):232–239
  64. Youland RS, Brown PD, Giannini C, Parney IF, Uhm JH, Laack NN (2013) Adult low-grade glioma: 19-year experience at a single institution. *Am J Clin Oncol* 36(6):612–619

**Publisher's note** Springer Nature remains neutral with regard to jurisdictional claims in published maps and institutional affiliations.