



Land-Use Legacies and Climate Change as a Double Challenge to Oak Forest Resilience: Mismatches of Geographical and Ecological Rear Edges

A. J. Pérez-Luque,^{1,2*} G. Gea-Izquierdo,³ and R. Zamora^{1,2}

¹Instituto Interuniversitario de Investigación del Sistema Tierra en Andalucía (IISTA-CEAMA), Universidad de Granada, Avda. del Mediterráneo s/n, 18006 Granada, Spain; ²Grupo de Ecología Terrestre, Departamento de Ecología, Facultad de Ciencias, Universidad de Granada, Avda. Fuentenueva s/n, 18071 Granada, Spain; ³INIA-CIFOR, Ctra. La Coruña km 7.5, 28040 Madrid, Spain

ABSTRACT

Global change challenges ecosystems in xeric locations transformed by intensive human use. Resilience to drought of relict Mediterranean *Quercus pyrenaica* populations in the southern Iberian Peninsula was analyzed in relation to historical records of land use, combining dendroecological growth of adult trees and greenness (EVI) as proxies for secondary and primary growth. The growth trends reflected a strong influence of old land-use legacies (firewood removal) in the current forest structure. Trees were highly sensitive to moisture availability, but both primary growth and secondary growth expressed high resilience to drought events over the short and the long term. Resilience and the tree growth response to climate followed a water-stress gradient. A positive growth trend since the late 1970s was particularly

evident in mesic (colder and wetter) high-elevation stands, but absent in the most xeric (warmer and drier) stands. The high values of resilience observed suggest that the studied *Q. pyrenaica* populations are located in a geographical but not a climatic or ecological rear edge. Resilience of oak stands to drought events was not spatially homogeneous across the mountain range, due to differences in ecological conditions and/or past management legacies. This is particularly relevant for rear-edge populations where topographic and biophysical variability can facilitate the existence of refugia.

Key words: Extreme drought; Resilience; Rear edge; *Quercus pyrenaica*; Tree growth; Dendroecology; Remote sensing.

Received 10 December 2019; accepted 15 August 2020; published online 3 September 2020

Electronic supplementary material: The online version of this article (<https://doi.org/10.1007/s10021-020-00547-y>) contains supplementary material, which is available to authorized users.

Author Contributions AJPL, GGI and RZ conceived of the study, conducted field work, and collected the data. AJPL and GGI performed the lab work. AJPL analyzed data and led the writing of the paper. All authors contributed in the writing process to the drafts and gave final approval for publication.

*Corresponding author; e-mail: ajperez@ugr.es

HIGHLIGHTS

- *Quercus pyrenaica* rear-edge forests showed high resilience to drought
- Resilience and the growth response to climate followed a water-stress gradient
- Tree growth and vegetation indices were highly sensitive to drought and land use

INTRODUCTION

The response of species to changing environments (for example, distributional shifts) can be determined largely by population responses at range margins (Hampe and Petit 2005). Peripheral populations are usually considered more vulnerable compared with populations at the center of a species' range (*that is*, center-periphery hypothesis; Sagarin and Gaines 2002; Pironon and others 2017). Geographically marginal populations have often been assumed to represent ecologically marginal populations. This means lower performance, higher vulnerability, and thus higher risk of extinction than for populations at the core of the species' range (Rehm and others 2015; Pironon and others 2017; Vilà-Cabrera and others 2019). Nonetheless, recent reviews report that species- and population-specific responses do not always support this hypothesis (Sexton and others 2009; Abeli and others 2014; Oldfather and others 2020). This is partly because a rear edge is a multidimensional concept including an ecological (*that is*, climatic and edaphic), a geographical, and a genetic component (Vilà-Cabrera and others 2019), but also an anthropogenic dimension (*that is*, land use). In this respect, to fully understand changes in distribution and abundance of species as a consequence of global change, it is crucial to identify and understand mismatches between the geographical and the ecological rear edges (Vilà-Cabrera and Jump 2019).

Limits of species distribution are strongly determined by climatic factors and biotic interactions (Gaston 2009; Sexton and others 2009). Climate change is expected to cause major shifts in the distribution and abundance of plant communities, and signs already indicate that more intense and longer droughts are altering forest dynamics (Allen and others 2010). Drought frequency and severity have increased in recent decades, with a trend toward drier summers, particularly for Southern Europe (Vicente-Serrano and others 2014; Stagge and others 2017). In this climatic-change context, population loss and range retractions are expected in boreal, temperate, and Mediterranean species at the lowest latitudes and elevations, as well as in drought-prone areas of a species' distribution, *that is*, the rear edge. The rear-edge populations are likely to be more sensitive to minor climatic and microtopographic variations and therefore the effects of droughts are expected to be particularly noteworthy (Hampe and Petit 2005; Vilà-Cabrera and others 2019).

It is often overlooked that human activity constitutes a driver of change as powerful or even more powerful as natural drivers (natural variation in climate), particularly for regions with long land-use history such as the Mediterranean Region (Navarro-González and others 2013; Doblas-Miranda and others 2017). In these areas, the susceptibility and response of ecosystems to climate change are conditioned by legacies of historical land-use activity (Munteanu and others 2015; Mausolf and others 2018). The past land-use legacies interact with recent human-caused climate disturbances and may confound their interpretation (Foster and others 2003). For example, recent works showed that a quarter of current forests in the Iberian Peninsula, are growing on former agricultural and grazing land abandoned after the 1950s (Vilà-Cabrera and others 2017). Consequently, anthropogenic habitat modification and its legacies represent a critical dimension of marginality as they may intensify, confound or delay climate-driven population decline at rear edges (Vilà-Cabrera and Jump 2019; Sánchez de Dios and others 2020). In this context, our work seeks to identify the impacts and responses to natural (severe drought) and human disturbances (logging) on oak forests at their southern geographical range. A historical perspective should help us to interpret the responses of ecosystems to disturbances (Foster and others 2003), particularly regarding marginal rear-edge populations (Vilà-Cabrera and others 2019).

The assessment of resilience to climate and human disturbances provides critical information concerning the capacity of forests to maintain their structure and render valuable ecosystem services. Resilience is the capacity of an ecosystem to persist and maintain its state and functions in the face of disturbance (Holling 1973; Hodgson and others 2015). Lloret and others (2011) proposed an approach, which decomposes resilience into three components: resistance to drought, recovery after drought and resilience. This resilience is determined by the forest's ability to mitigate the disturbance (resistance) and the capacity to recover from the impact (recovery) (Ingrisch and Bahn 2018). This conceptual approach has recently become widely used to assess forest resilience, because it allows a simple, yet highly efficient assessment of short-term responses of trees to drought. Nevertheless, not exempt from criticism, this approach needs to be applied carefully to avoid potential bias at different levels (Schwarz and others 2020). In this sense we assessed forest resilience both over the short-term to several recent

extreme drought episodes, as well as over the long-term to climate change (*that is*, warming on the last few decades), using two different proxies to characterize resilience. Dendroecological estimates of growth (tree-ring width) are commonly used proxies to characterize tree vitality and have commonly been used to study growth changes in response to drought at the individual tree level (Fritts 1976; Dobbertin 2005). Remote sensing can be used to analyze the impact of drought on ecosystems at the stand level (*for example*, Zhang and others 2013). Tree-ring records complement remote-sensing data with a longer time scale. Tree rings can reflect tree-growth anomalies induced by climate or other disturbance over decades to centuries (Babst and others 2017) and provide an accurate measure of growth responses to droughts (Bhuyan and others 2017). The combination of remote sensing and dendroecology has been used to assess the effects of droughts on vegetation along ecological gradients (Vicente-Serrano and others 2013; Coulthard and others 2017), and also to evaluate growth resilience to drought in several tree species (Gazol and others 2018; Peña-Gallardo and others 2018).

In the present study, we assess resilience of *Quercus pyrenaica* Willd. (Pyrenean oak) from southern relict forests at the rear edge of the species distribution, where species performance is considered to be threatened by climate change (Gea-Izquierdo and others 2013, 2017). For this, we combined remote-sensing information and dendroecological methods to evaluate the impact of drought both on canopy greenness (as a proxy for primary growth) and radial tree growth (as a proxy for secondary growth). For the analysis of forest resilience to climate, we took into account the land-use history of these transformed forests, thoroughly reviewing historical documents to reconstruct forest history at the study sites, and analyzing how anthropogenic drivers have shaped the current forest structure. Based on this analysis, we developed a rationale that integrates the ecological and anthropogenic components of marginality to determine the regional and local scale mechanisms shaping the probability of persistence (or extinction) of rear-edge oak populations. Our main hypothesis is that range edge stands will show low resilience to extreme droughts, but that the vulnerability to drought will be reduced quickly across a fine-scale topographic gradient of decreasing aridity. To test this hypothesis, we: (1) quantified how recent extreme drought events influenced primary and secondary growth of *Q. pyrenaica* forests at their present geo-

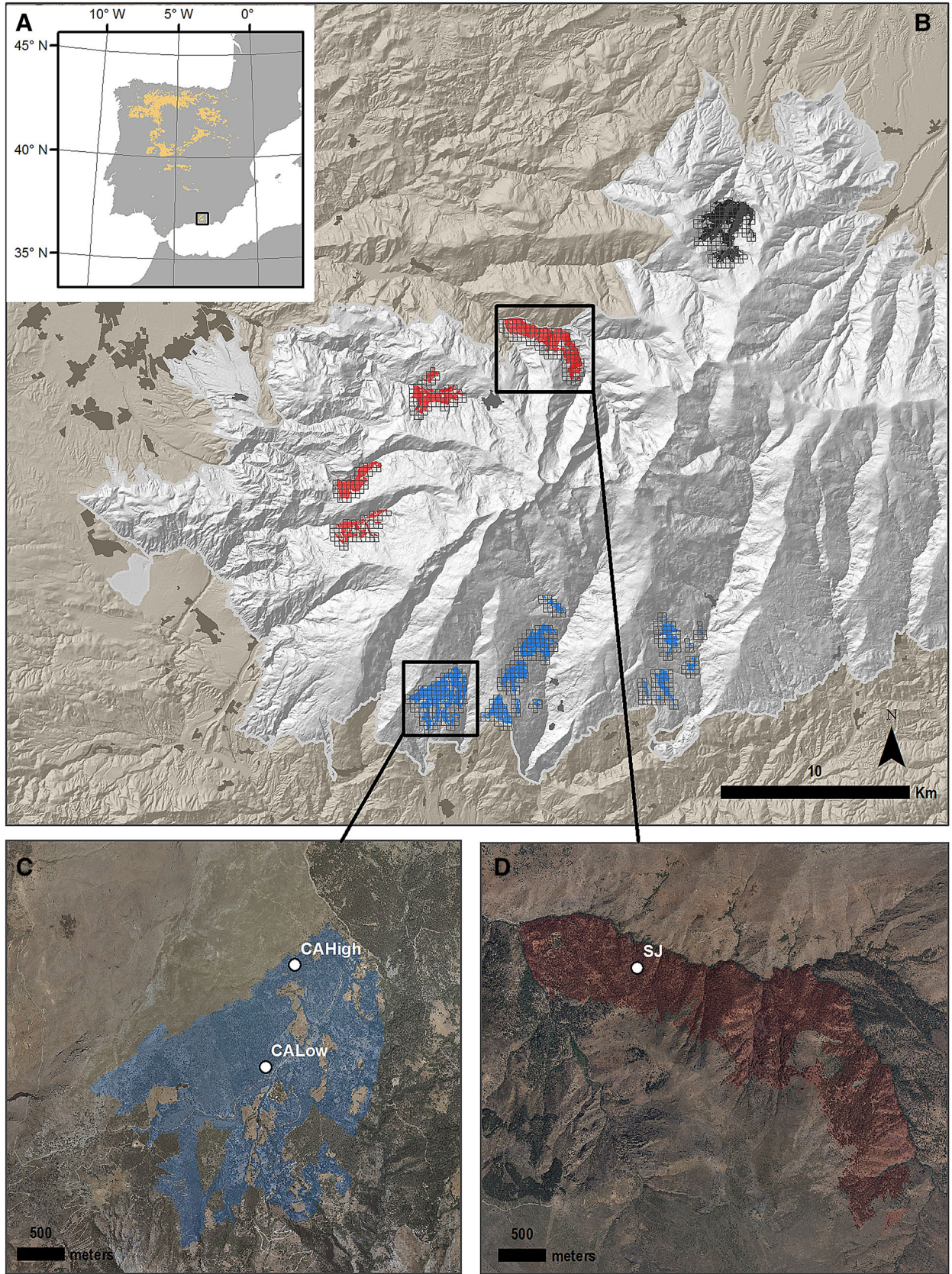
graphical rear edge; (2) analyzed the long-term resilience of these forests to extreme drought events, using time-series of radial growth; (3) reviewed historical documents to reconstruct forest-management history and to infer how it impacted tree growth and stand dynamics over time; (4) and examined differences in the resilience metrics between populations under contrasting ecological conditions (*that is*, xeric vs. mesic) along environmental gradients within the rear edge in order to detect vulnerability to climate change at the small spatial scale.

MATERIALS AND METHODS

Tree Species and Study Site

Quercus pyrenaica forests extend throughout southwestern France and the Iberian Peninsula, reaching their southern limit in mountain areas of northern Morocco (Franco 1990). In the Iberian Peninsula, these forests occupy siliceous soils under meso-supramediterranean and mesotemperate areas and subhumid, humid, and hyperhumid ombroclimate. Pyrenean oak is a deciduous species that requires over 650 mm of annual precipitation and some summer precipitation. As a submediterranean species, it has lower drought tolerance than evergreen Mediterranean taxa (del Río and others 2007).

The forests of this species reach their southernmost European limit in Andalusian mountains such as Sierra Nevada (37° N, 3° W), a high-mountain range with elevations of up to 3482 m a.s.l. The climate is Mediterranean, characterized by cold winters and hot summers, with pronounced summer drought and increasing aridity with decreasing altitude, and marked variability in annual rainfall according to elevation and aspect. Sierra Nevada is considered a glacial refuge for deciduous *Quercus* species (Olalde and others 2002). Eight Pyrenean oak patches (2400 ha) have been identified in this mountain range (Figure 1), from 1100 to 2000 m a.s.l. and often associated with major river valleys. Today, *Quercus pyrenaica* woodlands in this mountain region represent a rear edge of their habitat distribution (Hampe and Petit 2005). They are the richest forest formation in vascular plant species of Sierra Nevada, containing several endemic and endangered plant species (Lorite and others 2008). They also harbor high levels of intraspecific genetic diversity (Valbuena-Carabaña and Gil 2013). These relict forests have undergone intensive human use throughout history (Camacho-Olmedo and others 2002). Furthermore, the conservation status of this species for southern Spain is considered



◀**Figure 1.** Distribution of *Quercus pyrenaica* forests in the Iberian Peninsula (**A**) and in Sierra Nevada mountain range (**B**). Different colors indicate oak-population clusters identified in Sierra Nevada (Pérez-Luque and others 2015b). For each population, a grid with the MODIS pixels is shown (see Materials and methods). Detailed location of the dendroecological sampling sites: northern (San Juan, SJ) (**C**), and southern ones (Cáñar: CA-Low and CA-High) (**D**). Color orthophotography of 2009 from Regional Ministry of the Environment.

“Vulnerable” and it is expected to suffer from climate change, potentially reducing its suitable habitats in the near future (Gea-Izquierdo and others 2013, 2017).

Climatic Data and Drought Episodes

The Iberian Peninsula underwent several extreme drought episodes in the last three decades (for example, 1995, 1999, 2005, 2012; Vicente-Serrano and others 2014). The 2005 and 2012 drought events have been documented as being among the worst in recent decades for the southern Iberian Peninsula (Páscoa and others 2017), appearing as extreme drought in our climatic data (Figure S1; Table S3). We focused on these two drought events because they were included in the period having remote-sensing information of high spatial resolution (MODIS started on 2000; see below). Nevertheless, for radial growth-time series, a greater number of older drought events were also analyzed to contextualize the results for 2005 and 2012 and to evaluate forest resilience to drought over a longer term (see Table S3). A drought event was identified using the SPEI (Standardized Precipitation-Evapotranspiration Index) (Vicente-Serrano and others 2010) (SPEI 12-month scale), following a procedure similar to the one proposed by Spinoni and others (2015). We used 0.5° grid cells covering Sierra Nevada taken from the Global SPEI Database (<http://spei.csic.es/database.html>). A severe drought event starts when SPEI falls below the threshold of -1.28 (Páscoa and others 2017; Spinoni and others 2018). A drought event is considered only when SPEI values fall below that threshold for at least two consecutive months. For each drought event, we computed: the *duration* as the number of consecutive months with the SPEI lower than a certain threshold; the *severity* as the sum of the absolute SPEI values during the drought event; the *intensity* and the *Lowest SPEI* refer to the mean and lowest value of SPEI, respectively, during the drought event.

To explore the relationships between climatic variables and tree-growth variables, we used climate data obtained from the European Daily High-Resolution Observational Gridded Dataset (E-OBS v16) (Haylock and others 2008). Monthly precipitation and minimum and maximum temperatures had a $0.25 \times 0.25^\circ$ resolution for the 1950–2016 period. Grid cells were selected to cover each sampled site. The SPEI 6-month scale index was used to characterize the drought conditions for the period 1961–2014.

Greenness Data to Assess Ecosystem Resilience

Vegetation greenness of *Quercus pyrenaica* was characterized by means of the *Enhanced Vegetation Index* (EVI), derived from MOD13Q1 product of the MODIS sensor. EVI data consists of 16-day maximum value composite images (23 per year) of the EVI value with a spatial resolution of $250 \text{ m} \times 250 \text{ m}$. MODIS EVI data were compiled for the period 2000–2016. We selected the pixels covering the distribution of *Quercus pyrenaica* forests in Sierra Nevada ($n = 928$ pixels). Any values affected by clouds, snow, shadows or high content aerosols, were filtered out following recommendations for mountain regions (Reyes-Díez and others 2015).

The mean Annual EVI (EVI_{mean}) as a surrogate of mean annual primary production was computed for each pixel for the period 2000–2016. The EVI standardized anomaly (EVI_{sa}) was computed pixel-by-pixel, in order to minimize bias in the evaluation of anomalies and to provide more information concerning their magnitude (Samanta and others 2012). For each pixel, an annual EVI value was calculated by averaging EVI valid values. Then, the standardized anomaly was computed as: $EVI_{\text{sa},i} = (EVI_{\text{mean},i} - EVI_{\text{mean,ref}}) / \sigma_{\text{ref}}$, where $EVI_{\text{sa},i}$ is the EVI standardized anomaly for year i ; $EVI_{\text{mean},i}$ the annual mean value of EVI for year i ; $EVI_{\text{mean,ref}}$ the average of the annual EVI values for the period of reference 2000–2016 (all except year i); and σ_{ref} the standard deviation for the reference period. Each pixel was categorized according the EVI standardized anomalies as “greening” ($EVI_{\text{sa}} > 1$), “browning” ($EVI_{\text{sa}} < -1$) or “no-changes” ($-1 > EVI_{\text{sa}} > 1$) (Samanta and others 2012).

Rather than other vegetation indices such as the NDVI, EVI_{mean} was chosen because it is highly stable under the use of any filter (Reyes-Díez and others 2015) and because it showed highly significant correlations with annual ($r = 0.81$) and seasonal EVI values ($r_{\text{spring}} = 0.76$ and $r_{\text{summer}} = 0.88$).

Field Sampling and Dendroecological Methods to Assess Individual Tree Resilience

Trees were sampled during the autumn of 2016 at two locations in contrasting N-S slopes of Sierra Nevada: San Juan (SJ), a xeric site located at the northern aspect (around 1400 m); and Cáñar (CA), a wetter site located at the southern aspect (Figure 1; Table 1). For the southern site, two elevations were sampled: CA-Low (around 1700 m) and CA-High (around 1860 m), constituting the current low-elevational limit for the species (CA-Low) and the maximum altitude currently reached by trees (CA-High), respectively, in the site sampled. Despite the proximity of these two elevations (less than a 200-m difference), the stands differ markedly in their structure and characteristics (Table 1). The three sampling sites followed a moisture gradient: SJ < CA-Low < CA-High (Table 1). All the sites were oak monospecific and representative of the population clusters identified for the species in this mountain range (Pérez-Luque and others 2015b). At each site, between 15 and 20 trees from either the single dominant-codominant layer in CA or the open canopy in SJ were randomly sampled. Two cores of 5 mm in diameter were taken from each tree at breast height (1.3 m) using an increment borer. Diameter at breast height (DBH) and total height were measured for each tree. In addition, stand competition affecting target trees was assessed by recording distance, azimuth, DBH, species, and total height of all neighboring living trees with DBH > 7.5 cm within a circular plot with a 10-m radius. Several competition indices were calculated: the distance independent indices *density* (trees · ha⁻¹), and *basal area* (BA, m² · ha⁻¹); and the distance dependent index size ratio proportional to distance as $srd = \sum_{i=1}^n (dbh_j/dbh_i) \cdot [1/(dist_{ij} + 1)]$ (see Gea-Izquierdo and Cañellas 2009 for more details).

Tree cores were air-dried, glued onto wooden mounts, and sanded. Annual radial growth (ring width, RW) was determined with a measuring device coupled to a stereomicroscope, for an accuracy of 0.001 mm. Individual ring series were first visually and statistically cross-dated with TSAP software (Rinntech, Heidelberg, Germany), using the statistics Gleichläufigkeit (GLK), t-value and the crossdating index (CDI). Cross-dating validation was finally verified using COFECHA (Holmes 1983).

The growth trends were analyzed at different time scales. To study the growth response to the

inter-annual variability of climate (short-term response), pre-whitened residual chronologies (RWI) were used. These were calculated from ratios between raw growth measurements and individual cubic splines with a 50% frequency cutoff at 30 years (Fritts 1976). Tree-ring width series were standardized and detrended using dplR (Bunn 2010). Mean residual site chronologies were established by computing the biweight robust mean of all pre-whitened growth indices for the trees of the same site (Fritts 1976). The statistical quality of each chronology was checked via the expressed population signal (EPS). A threshold value of EPS > 0.85 was used to determine the cutoff year of the time span that could be considered reliable.

The long-term growth response was analyzed using basal area increment (hereafter BAI, cm² · year⁻¹). In theory, BAI represents a more accurate indicator of growth than ring width, because it removes variation in growth attributable to increasing stem circumference after 30–40 years of juvenile growth (Biondi and Qeadan 2008). Raw ring widths and measured DBH were used to compute BAI (Piovesan and others 2008) with the following equation: $BAI = \pi(r_t^2 - r_{t-1}^2)$ where r is the radius of the tree and t is the year of tree-ring formation. For each individual tree, a mean BAI series was calculated. Then, mean site BAI chronologies were determined by averaging individual tree BAI time series.

Disturbance Analyses and Land-Use History Review

Disturbance chronologies were built using tree-ring width to identify abrupt and sustained increases (release events from competition) or decreases (suppressions) in radial growth (Nowacki and Abrams 1997) as indirect estimates of possible disturbance events (for example, logging, drought-induced neighbor mortality) in the past. Growth changes (GC) were calculated for the individual tree-ring series using a 10-year running window as either positive (PGC) or negative (NGC) growth changes: $\% GC = [(M1 - M2)/M2] \times 100$, where $M1$ is the preceding 10-year median and $M2$ is the subsequent 10-year median (Rubino and McCarthy 2004).

Site-disturbance chronologies were constructed by annually averaging the individual disturbance series. To separate growth peaks caused by disturbance events and expressing stand-wise disturbances from those caused by climate, we considered a threshold of 50% of GC and more

Table 1. Characteristics of Sampled Plot

Site	Lat (°)	Long (°)	Elevation (m)	Slope (°)	Prec. (mm)	Temp. (° C)	Cored trees			Stand competition					
							# trees (# cores)	Dbh (cm)	Height (m)	Age (years)	Dbh all (cm)	Height all (m)	BA (m ² ha ⁻¹)	Density (trees ha ⁻¹)	SRD
CA-High	36.97	- 3.42	1846-1884	12.11 (3.28)	731	3.4-13.8	15	69.8 (20.5) a	15.4 (1.8) a	161.0 (32.2) a	34.1 (24.3) a	10.8 (4.4) a	39.13 (24.31) a	348.0 (147.1) a	0.91 (0.63) a
CA-Low	36.96	- 3.42	1691-1751	12.86 (2.98)	658	4.7-15.6	15	45.9 (8.6) a	12.6 (1.6) b	148.5 (16.5) a	21.7 (14.4) b	9.0 (2.8) b	18.02 (7.11) ab	409.6 (226.0) a	0.89 (0.44) a
SJ	37.13	- 3.37	1322-1474	27.33 (5.59)	555	4.9-16.35	20	31.9 (3.7) b	11.8 (2.3) b	72.6 (11.1) b	20.6 (8.1) b	9.7 (3.6) ab	11.64 (5.47) b	339.0 (130.3) a	1.11 (0.52) a

Lat latitude; Long longitude. Dbh and height of all trees, Basal Area (BA), Density and SRD (size ratio proportional to distance) are computed for all trees within a 10-m radius of focal trees (see Materials and methods). Temp.: annual average of mean monthly minimum and maximum temperatures. Values shown here correspond to site averages. Standard deviations are shown in parentheses. Different letters indicate statistically significant differences between sites (Kruskal-Wallis test followed by Dunn's test, $p < 0.05$). Stands were monospecific; hence, all results correspond to oak data.

than 50% of the individual trees displaying the same growth changes (for example, Gea-Izquierdo and Cañellas 2014). In addition, the history of the forest and management of our sampling sites was inferred from a detailed analysis of historical land-use changes. For this, existing historical documents were exhaustively reviewed to compile information on socio-economical activities affecting the forests being studied (Table S4). We exhaustively reviewed existing documentary sources: historical documents and maps; detailed mining reports; official information on recent wildfires events and forest-management practices; livestock farming; traditional irrigation channels; and studies concerning the socioeconomic dynamics of forests on Sierra Nevada at different spatio-temporal scales (see Table S4 for references).

Assessing Resilience to Drought at the Forest Stand and Individual Tree Levels

To evaluate the effects of drought events on ecosystem resilience (using greenness data) and individual tree resilience (using BAI data), we used resilience indices proposed by Lloret and others (2011). The Resistance index estimated as the ratio between performance during and before the disturbance ($\text{Resistance} = \text{Drought} : \text{PreDrought}$) quantifies the severity of the impact of the disturbance in the year it occurred. The Recovery index, computed as the ratio between performance after and during disturbance ($\text{Recovery} = \text{PostDrought} : \text{Drought}$), represents the ability to recover from disturbance relative to its severity. Finally, the Resilience index ($\text{Resilience} = \text{PostDrought} : \text{PreDrought}$) is the capacity to reach pre-disturbance performance levels. The values of these indices were computed for tree growth (BAI) and greenness (EVI_{mean}) during each drought event. The predrought and postdrought values of each target variable (BAI or EVI) were computed as the mean value over a period of three years before and after the drought event, respectively. A period of three years was chosen because we found similar results on comparing periods of two, three, and four years (Figure S3b), and this time period has been used in other studies (for example, Gazol and others 2018). Resilience metrics for BAI data were additionally computed for the most severe drought events since 1940 ($n = 8$; Table S3) and compared with drought severity.

Statistical Analysis

Differences between sites for height, DBH, and competition indices were analyzed using nonparametric Kruskal–Wallis rank sum tests. When significant differences were detected, multiple comparisons were run using the Dunn’s-test with Bonferroni adjustment to correct for significance.

The severe drought events since 1901 were identified using SPEI-12. They were characterized in terms of duration, severity and intensity (see Spinoni and others 2015). In a first step, the impact of drought in greenness and growth was explored using the EVI_{sa} and the mean RWI site chronologies (Figure 2). Additionally, the relationships between climatic variables and tree-growth variables (RWI and BAI site chronologies) were assessed using bootstrapped Pearson’s correlations estimated using treeclim (Zang and Biondi 2015). The non-climatic disturbance impacts on tree-growth were evaluated using site disturbance chronologies (built using growth changes on tree growth).

Responses of vegetation to disturbances were explored in the short- and the long-term using resilience metrics (resilience, resistance and recovery) and temporal trends, respectively, for both EVI and BAI (Figure 2). Resilience metrics of BAI were computed for the eight most severe drought events since 1950 (including 2005 and 2012), and their relationship with drought severity were explored. Resilience metrics of EVI were computed only for 2005 and 2012 drought events. Temporal trends of EVI_{mean} (pixel scale) and BAI (mean BAI site chronologies) were examined using nonparametric (Mann–Kendall) and parametric test (Pearson), respectively.

For each of the three resilience indices studied, we used robust two-way ANOVAs to test for differences between drought events (2005 and 2012) and the oak populations studied (northern and southern exposures). These tests were used because original and log-transformed data did not follow the assumptions of normality or homogeneity of variance (Wilcox 2012). Robust measures of central tendency (M-estimator based on Huber’s Psi) were used because they were close to the mean value in all cases (Wilcox 2012). When the robust ANOVA test was run, data were bootstrapped 3000 times and trimmed automatically to control the potential influence of outliers. *Post hoc* differences were assessed pairwise using a similar bootstrap test. All the robust ANOVA and post hoc tests were carried out using the WRS2 R package (Mair and Wilcox 2020). The level of significance was set to 0.05 and adjusted for multiple comparisons.

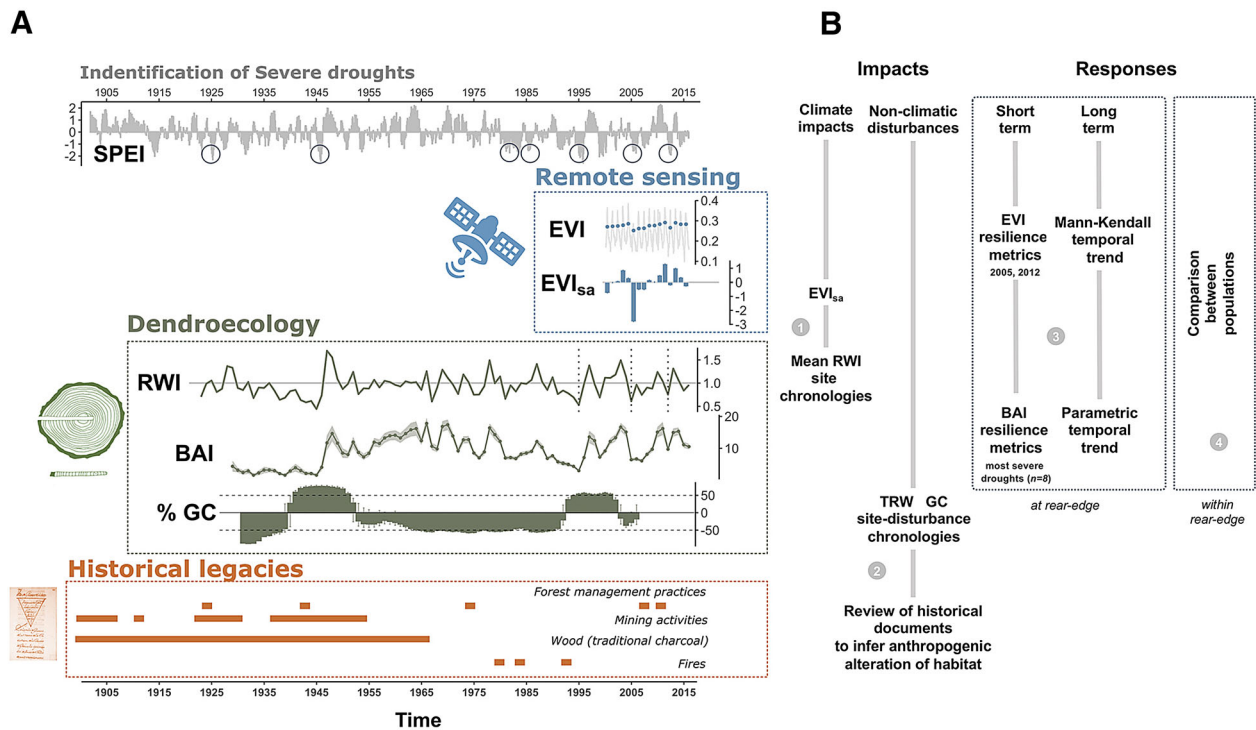


Figure 2. Schema of the different metrics (**A**) and analyses (**B**) used in the manuscript (see Materials and methods for details). The severe drought events since 1901 were identified using SPEI-12 and characterized in terms of duration, severity and intensity. Climate impacts on vegetation were assessed for greenness and tree-growth. Non-climatic disturbances on vegetation were quantified using growth changes on tree growth (% GC) and were also related with anthropogenic alterations inferred from review of historical documents. Responses of vegetation to disturbances were explored in the short- and the long-term using resilience metrics and temporal trends, respectively, for both EVI and BAI. Resilience metrics of BAI were computed for the eight most severe drought events since 1950, and their relationship with drought severity were explored. For the 2005 and 2012 drought events we also compared EVI and BAI resilience metrics among the three *Q. pyrenaica* populations. Numbers (gray circles) indicate the study aims to which the analyses are related.

RESULTS

Temporal Trends in Vegetation Greenness

The analysis of temporal trends in greenness showed that 78.9% of the EVI pixels followed a positive trend for the 2000–2016 period. The lowest values of EVI standardized anomalies for the study period were recorded during the 2005 drought, and the minimum EVI values were expressed in the northern (dry) population (Figure 3A). A “browning” episode ($EVI_{sa} < -1$) was found during this drought event, whereas no changes in greenness in response to the 2012 drought were detected (Figure 3B).

Analysis of Radial-Growth Trends and Disturbances

The trees of the southern population were older than those from the northern one (Table 2). In

addition, trees from the southern population at high elevation were taller and their growth was significantly greater than that of trees from the other two sites. Stand competition measured as plot basal area was greatest in CA-High (Table 1, Figure 4A). The growth and height of trees from the northern and the low-elevation southern population were similar (Figures 4A and S3a). Only trees from the southern sites (*that is*, the wetter exposure) showed significant positive growth trends since the late 1970s (Figure 4A), this trend being far more pronounced for the wetter and colder high-elevation site (CA-High).

Drought events reduced radial growth for all sites (Figure S2a). The strongest reduction in radial growth occurred in response to the 1995 drought (the worst drought spell in our climatic record, Table S3) for all sites. Tree-growth reductions in response to drought followed a moisture gradient. Tree-growth reductions in response to the studied drought events were lower in the southern sites

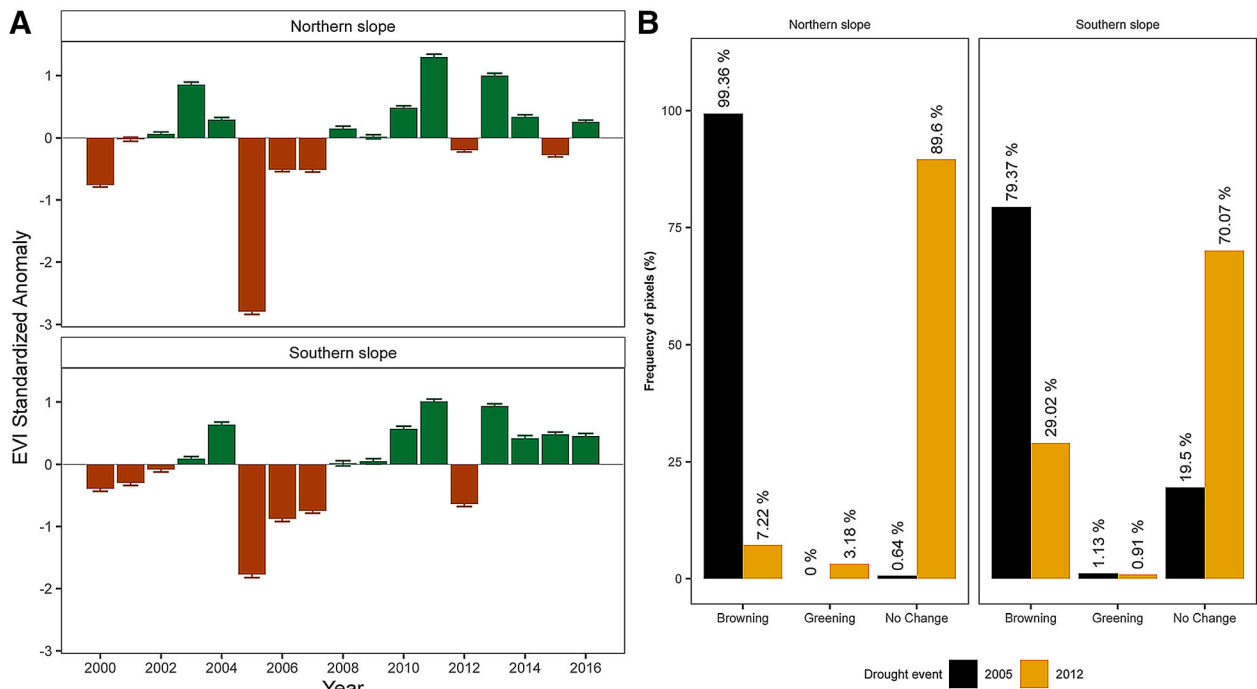


Figure 3. **A** EVI standardized anomaly during the period 2000–2016 for northern and southern populations. Error bars show standard error. See main text for details on EVI calculation. **B** Percentage of pixels showing browning, greening or no changes during the 2005 and 2012 drought events according to EVI standardized anomalies. See main text for an explanation of greening and browning.

Table 2. Characteristics of the Mean Tree-ring Chronologies

Site	First year	Last year	Length (years)	# trees	# cores	RW (mm)	MS	AR(1)	Rbt	EPS
CA-Low	1836	2016	181 (164)	15	30	1.253 (0.781)	0.208	0.799	0.520	0.897
CA-High	1819	2016	198 (188)	15	30	1.500 (0.879)	0.203	0.827	0.522	0.907
SJ	1921	2016	96 (90)	20	48	1.725 (1.207)	0.319	0.692	0.637	0.959

Length values in parentheses indicate the number of years replicated with more than five series. RW = mean annual ring width (standard deviation in parenthesis). MS = mean sensitivity. AR(1) = mean autocorrelation of raw series. Rbt = mean correlation between series. EPS = mean expressed population signal. EPS and Rbt were calculated for the mean residual chronologies of growth indices.

(CA-High and CA-Low) than in the northern site (SJ), especially for 2005 and 2012 (Figure S2a). The weakest growth reductions were found in trees from the wettest site (CA-High).

The response of tree growth to water availability was greater than that to temperatures. Cumulative precipitation of the hydrological year and seasonal SPEI values (*that is*, for the Hydrological year, Spring and Summer) were the climatic variables exhibiting the highest (positive) relationship with growth for all populations (Figure S6a). Nevertheless, there were differences between populations: the positive relationship with SPEI was highest in the more xeric northern population ($r > 0.6$ vs. $r < 0.5$; Figure S6a).

The northern site (SJ) showed two major release events ($GC > 50\%$ occurring in more than 50% of trees sampled): the first during the 1940s (the most evident) and the second in 1995–2000 (Figure 4B). These periods alternated with periods of suppression. By contrast, the two southern sites showed no release events except for CA-High at the beginning of the 1830s and no suppression events in the last 50 years.

Resilience, Resistance and Recovery to Drought Events at the Stand and Individual Tree Levels

Resilience and resistance varied in the same direction, whereas recovery varied inversely to resi-

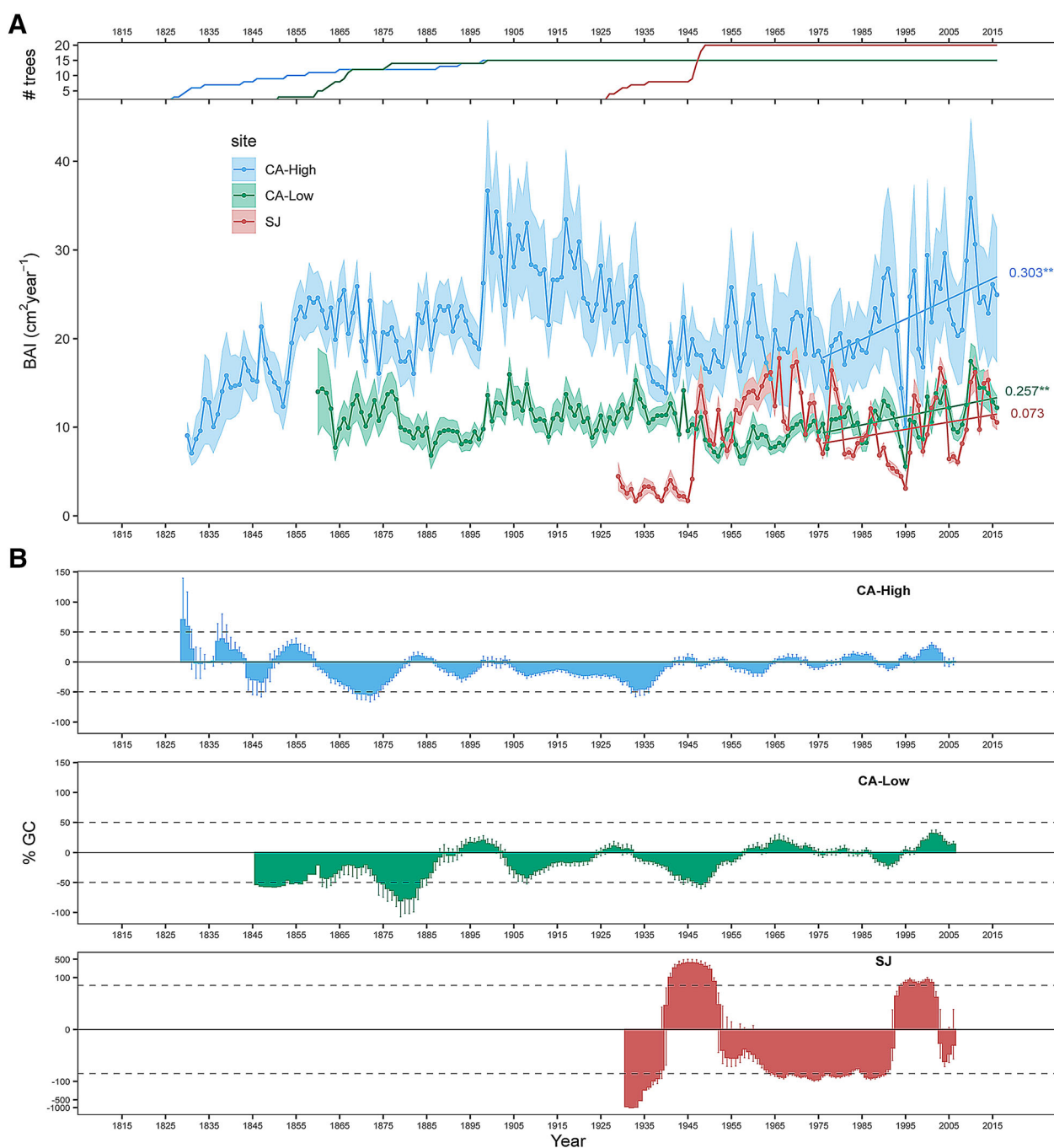


Figure 4. **A** Basal Area Increment (BAI) chronologies of *Q. pyrenaica* for northern population (SJ; red) and southern ones: low-elevation (CA-Low; green) and high-elevation (CA-High, blue) sites. Shading areas correspond to standard error of the mean. Number of series is displayed in the upper plot. Only years replicated with # series > 5 are shown. Linear trends since 1975 are indicated for all sites (numbers indicate r^2 values; asterisks indicate significant linear trend, $p < 0.001$). **B** Comparison of median growth change (GC) following Nowacki and Abrams (1997) for *Q. pyrenaica* sites. Dashed black lines indicate a threshold of 50% of GC (see Materials and methods). Note that y-axes do not correspond in all of the three panels for the sake of clarity. Error bars indicate standard error.

lience and resistance. During the last two drought events, resilience metrics for greenness and tree growth significantly differed between drought events (Table S1). The 2005 drought event reduced

greenness and growth more than that of 2012 (Table S2), but the metrics of resilience generally covaried in the same direction during those two drought events. For EVI, resilience and resistance

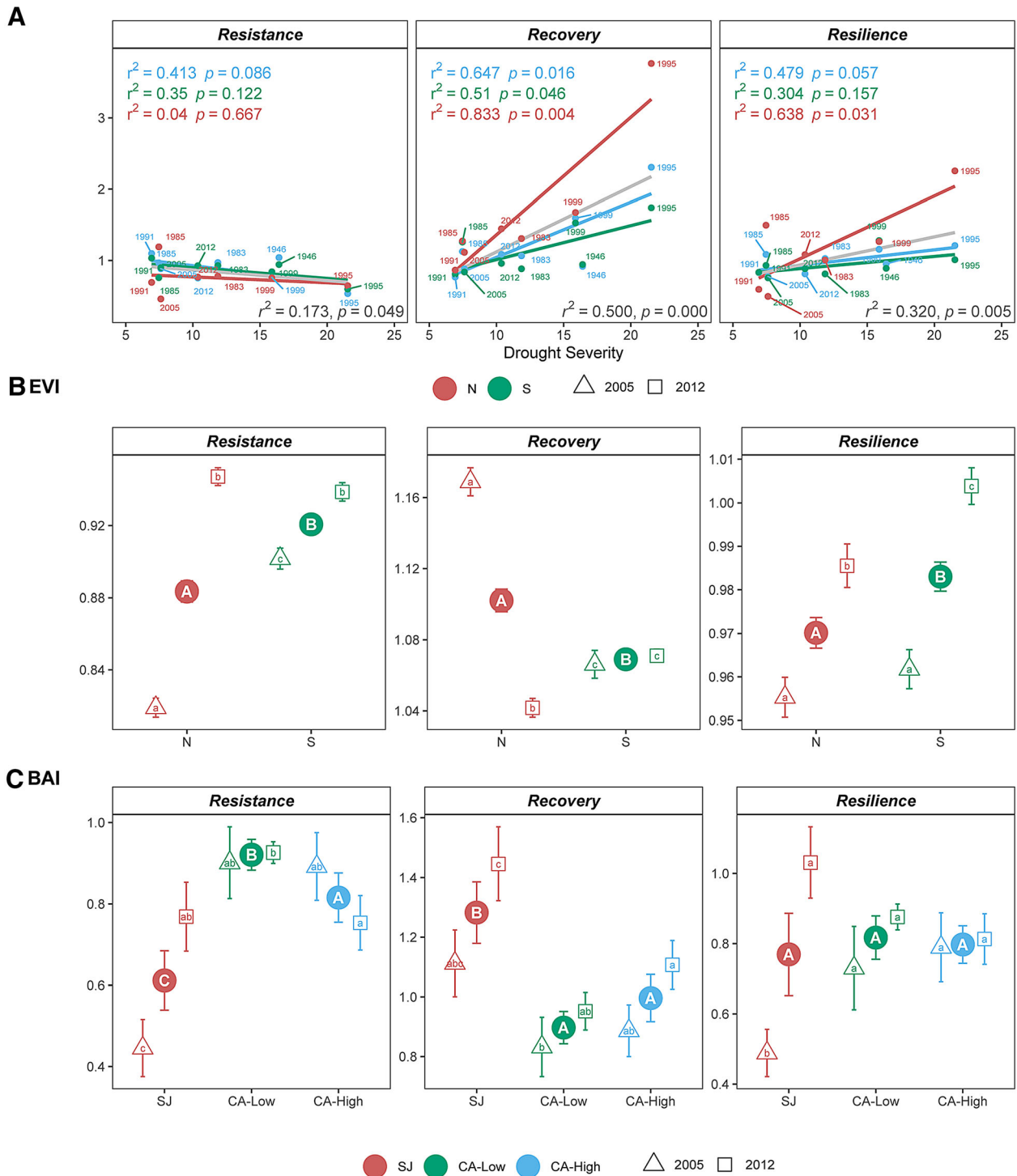


Figure 5. **A** Resilience metrics of tree-growth for eight severe drought events since 1950 (see main text for details) as a function of drought severity. Points indicate resilience metrics for oak populations: SJ (red), CA-High (blue) and CA-Low (green). Resilience metrics were computed for each population (sample depth > 10) and drought event. Gray lines represent overall relationships for each Resilience metrics. **B** Comparison of the response of *Q. pyrenaica* forests to drought in terms of resistance, recovery, and resilience of greenness (B) and tree growth (C). For EVI, northern populations (red circle) were compared with southern ones (green circle). For BAI, the more xeric northern population (San Juan, SJ; red circle) was compared with the two southern populations, Cãñar-High (CA-High; blue circle) and Cãñar-Low (CA-Low; green circle). Different letters indicate significant post hoc differences between groups (see Materials and methods for details).

values were significantly higher for 2012, the most severe event, than for 2005 (Table S2; Figure 5B), whereas recovery values were higher for 2005 than for the 2012 drought event. For BAI, the resilience, resistance and recovery values were higher for 2012 than for 2005 (Table S2, Figure 5C).

The recovery and resistance for greenness and growth varied significantly between sites. Resilience calculated for greenness also differed between sites but not for tree growth ($p = 0.534$; Table S1). The two southern populations showed lower recovery values than did the northern site both for greenness and tree growth, but resistance and resilience values were significantly higher for the southern site (Table S2).

Resilience metrics of tree-growth for drought events since 1950 (*that is*, shared period among the three chronologies excluding the juvenile years, Table S3) revealed a positive relationship between drought severity and recovery, significant for all oak populations (Figure 5A). A similar pattern was found for resilience but proved significant only for SJ. Importantly, non-significant patterns resulted when we excluded 1995, except for recovery in SJ (Figure S5). The trees showed the highest value of tree-growth resilience for 1995, the worst drought event in our study area, particularly SJ where our results suggest a major release event also after 1995 (Figure 4B).

DISCUSSION

By using a combined approach of remote-sensing information and dendroecology, we quantified the growth of adult trees and greenness (EVI) as proxies for secondary and primary growth of relict Mediterranean *Quercus pyrenaica* populations in the southern Iberian Peninsula. These relict oak populations, driven by historical land use, have been resilient to climate change at their present rear edge. However, resistance, resilience, and forest recovery after extreme drought events were strongly influenced by mountain exposure, local environmental conditions, and management legacies. This means that the geographical and the ecological rear edges do not necessarily match and, at a small spatial scale, tree performance can vary markedly along the rear edge under climate change.

High Sensitivity and Variability in the Oak Sensitivity to Climate at the Rear Edge

Severe drought negatively affects both primary and secondary growth of *Q. pyrenaica* forests. This was

expressed by the observed reduction in greenness and tree growth in response to the 2005 and 2012 drought events as well as by radial-growth suppression during extreme drought events (Corcuera and others 2006; Gea-Izquierdo and Cañellas 2014). Furthermore, the greatest reduction of tree growth was detected during the 1995 drought, a characteristic negative precipitation anomaly that caused severe and extensive damage in the Mediterranean Iberian Peninsula (Peñuelas and others 2001; Gazol and others 2018).

The tree responses to drought are site-dependent (Babst and others 2013), particularly for rear-edge populations (Cavin and Jump 2017; Dorado-Liñán and others 2017c). Greenness and tree growth were more affected by drought events in drier northern populations than in wetter southern oak populations of Sierra Nevada. The northern site showed higher browning intensity than did the southern sites during the 2005 drought event, and stronger correlations of tree-growth with SPEI (hydrological year and summer) at the northern site can be interpreted as higher sensitivity to drought at drier sites (Gea-Izquierdo and Cañellas 2014). Greenness was less sensitive to drought than tree growth, particularly for drier sites. These findings agree with previous works showing tree growth to be a more sensitive metric of forest resilience than is net primary productivity (for example, Babst and others 2013; Coulthard and others 2017; Gazol and others 2018; Peña-Gallardo and others 2018), suggesting that the growth reduction could be mediated by sink more than by source limitations (Körner 2013; Fatichi and others 2014). On the other hand, trees at CA-High registered higher BAI than did those located at lower elevations (CA-Low and SJ; Figure 4). This shows the high variability in the response to climate exhibited along a narrow gradient, which was especially noteworthy for southern sites, as these lie close to each other and both are considered to constitute the rear edge for the species.

As with many other forest species under Mediterranean climates, moisture availability is generally the most limiting factor driving radial growth of *Q. pyrenaica* along its distribution range in the Iberian Peninsula (Gea-Izquierdo and Cañellas 2014). Thus, our results are consistent with those of previous studies highlighting the influence of precipitation on tree-ring growth in different oak species (for example, Tessier and others 1994; Di Filippo and others 2010; Gea-Izquierdo and others 2011; García-González and Souto-Herrero 2017). A positive effect of moisture availability and negative impact of temperature expressing a limiting effect

of high vapor-pressure deficit and potential evapotranspiration can be expected at drought-limited rear edges. Yet, at the rear edge, the growth of some tree species (for example, *Abies alba*) has been shown to be more sensitive to moisture-related variables (Martínez-Sancho and Gutiérrez Merino 2019), whereas others species were more sensitive to temperatures (for example, *Pinus sylvestris*, Herero and others 2013), and still other species responded simultaneously to both temperature and moisture-related variables (for example, *Fagus sylvatica*, Dorado-Liñán and others 2017a, b; *Pinus nigra* subsp. *salzmannii*, Sánchez-Salguero and others 2012). This diversity in the response of tree species to precipitation and temperature suggests that vulnerability to climate change is not consistently expressed within the rear edge, therefore evidencing that geographically marginal forests are not necessarily climatically or ecologically marginal (see Dorado-Liñán and others 2019 and references therein).

Relict Oaks Show High Resilience to Drought at Different Spatio-Temporal Scales: Do the Geographical and Ecological Rear-Edges Match?

Despite the severe drought events in recent decades (Table S3), we found a positive trend for vegetation greenness of *Q. pyrenaica* for the last 16 years. This is consistent with previous findings stressing a recent short-term increase in primary productivity for these forests coinciding with a rather wet decade in the 2000s after a dry decade in the 1990s (Pérez-Luque and others 2015a). For tree growth, positive trends also appeared in the last decade, particularly for the southern high-elevation site (CA-High, Figure 4A). Similar long-term trends have been described for this species along its distribution range only at high-elevation wet and cold sites (Gea-Izquierdo and Cañellas 2014). This could be related to a nonlinear positive effect of warming for species at cold-limited high-elevation sites (Salzer and others 2009; Gea-Izquierdo and Cañellas 2014). Importantly, for rear edges threatened by climate change, negative growth trends were expected, as shown for some temperate and Mediterranean species (Sánchez-Salguero and others 2012; Camarero and others 2015b; Dorado-Liñán and others 2017b).

Although the 2012 drought event was more severe and intense than that of 2005 (Table S3), resilience values for greenness and tree growth were greater for 2012. This could be due to the different timing of the two droughts. The 2012 event was a winter drought (Trigo and others 2013) occurring

earlier than the shorter 2005 drought. The latter matched the period of maximum growth for oak forests in late spring (Figure S4). This would highlight the importance of the timing of the drought as a key factor determining tree recovery after drought (Camarero and others 2015a; Huang and others 2018). For tree growth, the highest values of resilience were found for the two most severe events (1995 and 1999; Table S3) and tree-growth resilience was positively related to drought severity (Figure 5A).

The high drought-resilience values reported here, in addition to the potential role of local adaptation (*that is*, high values of genetic resilience for oak forests on Sierra Nevada; Valbuena-Carabaña and Gil 2013, 2017), suggest that land use also has a key role to determine tree resilience to drought and the range edge of species. Our findings agree with those of studies showing that the assumed higher vulnerability of current geographical dry edges does not necessarily hold (for example, Cavin and Jump 2017). In our case, this can be explained by the fact that the current geographical rear edge does not match with the potential ecological rear edge for the species because this has been modified and determined mostly by human use. Martínez-Vilalta (2018) pointed out the importance of local adaptation and plasticity, and also of local environmental factors on the vulnerability shown by rear-edge populations. Our results highlight the ample small-scale variability at the ecological boundary and thus the rear edges need to be more clearly defined and delineated. All the above points, together with the characteristic high resprouting ability of the species, show the long-term persistence of these populations (Bellingham and Sparrow 2000). It should be mentioned that we studied only adult individuals established decades or centuries ago, meaning that it needs to be assessed whether the high resilience found is expressed at the species level (*that is*, also including regeneration) or only in adult trees. The rear edge might differ for different ontogenic stages. It is important to assess whether seedling regeneration and recruitment are vulnerable, as in other Mediterranean species at some locations including their xeric limit (Castro and others 2004; Vilà-Cabrera and others 2011; Gea-Izquierdo and others 2015).

Land-Use Legacies in Relation to Forest Response Under Climate Change and to the Present Rear Edge

The review of historical documents revealed that forest clearings, firewood removal, charcoal production, and mining have strongly affected the forests on Sierra Nevada (Table S4), where an

estimated historical loss of broadleaf *Quercus* species has approached 90% in tree cover at medium and low elevations (Jiménez-Olivencia and others 2015). Together with the analysis of the disturbance chronologies, the observed notable differences in stand structure, tree size, and age suggest different forest histories and a different management origin (*that is*, land-use legacy) between northern (coppice) and southern populations (high forest, open woodland). On the northern slopes of Sierra Nevada (for example, the SJ site), land uses have been historically distributed along an elevational gradient: grasslands and shrublands for cattle farming at the highest elevations; next forest stands with some croplands; and, finally, irrigated terraces with tree crops at the lowest elevations (Jiménez-Olivencia and others 2015). In addition, other activities such as mining must have altered the forest structure, for example, the SJ site has many small mines and quarries that were exploited intermittently throughout history. The release growth event expressed in the 1940s concurs with a period of maximum mining activity in this area (1925–1957), during which timber use increased for mine tunnels and furnaces, these also requiring large amounts of firewood to melt the mineral (Table S4). This heavy exploitation of the neighboring forest resources must have affected a significant part of this oak woodland, as shown by growth of the remnant trees at the northern site (Figure S2b).

On the other hand, woodlands on the southern slopes (*for example*, CA sites) were mixed with a greater percentage of croplands along the elevational gradient where oaks grow (Jiménez-Olivencia and others 2015). Firewood, charcoal, and acorns were intensively exploited at the southern sites, until at least the mid-20th century, when these activities sharply declined due mainly to rural abandonment and the use of gas and fossil fuels (Valbuena-Carabaña and Gil 2013). At the CA-High site, the only positive release event found for the earliest years could be related to the conversion from closed forest to an open silvopastoral system, a common management practice often applied in the past in many Iberian oak woodlands (Cañellas and others 2004; Gea-Izquierdo and others 2011) and which has been documented for this site (Valbuena-Carabaña and Gil 2013).

The other release event observed for the SJ site during the period 1995–2000 was lower than during 1940, but also affected most trees (Figures 4B, S2b). No records of forest practices in this area over the last 30 years have been found (Bonet and others 2016), and no logging was recorded during

the period 1995–2000 (F.J. Cano-Manuel *personal communication*). Therefore this release might be related to natural drought-induced mortality after 1995, as has been reported for other Mediterranean tree species after severe drought (Peñuelas and others 2001; Lloret and others 2004).

CONCLUSIONS

Two main results could be highlighted from our research. First, the high values of resilience in our study suggest that *Quercus pyrenaica* populations in Sierra Nevada are located in a geographical, but not a climatic, ecological rear edge (*sensu* Martínez-Vilalta 2018; Vilà-Cabrera and others 2019). Contrary to our expectations, the trees exhibited high resilience in the response to drought, particularly over the long-term. The high resilience values observed could also be related to stabilizing mechanisms promoting community resilience or enhancing resilience of already established adult individuals (*for example*, stress tolerance capacity linked to local adaptation; Lloret and others 2012), that can buffer the impact of extreme events, as has been described for other species (*for example*, *Pinus sylvestris*, Herero and Zamora 2014). Second, these resilience responses of oak forest to drought events are not spatially homogeneous throughout the mountain range, due to differences in ecological conditions and/or past management legacies. In fact, there was much small-scale variability in the response to climate along the rear edge that we had not a priori considered in our study. The differences found in tree growth, climatic sensitivity and tree resilience between close neighboring sites showed that responses to drought were site dependent and could drastically vary in extremely narrow spatial gradients. In other words: in mountains, heterogeneity of ecological conditions at fine scales is the rule, enabling the existence of microrefugia and lengthening species persistence (Olalde and others 2002; Serra-Diaz and others 2015). This is particularly relevant to define the real extent and nature (*that is*, geographical and/or ecological) of rear-edge populations where topographic and biophysical variability facilitates the existence of microrefugia.

The analysis of tree-growth dynamics revealed suppression and release events that were consistent with legacies left by land use in local forest dynamics, as inferred from an exhaustive review of historical documents. This suggests that the rear edge therefore needs to be redefined in space but also in time (Vilà-Cabrera and others 2019), partly because of land-use legacies and their effect on the possible mismatch between the current distribution

of species (*that is*, determining the “available” geographical rear edge) and the potential ecological (limiting) rear edge of species. The rear-edge concept should also consider historical aspects in addition to the geographic, climatic, and genetic ones (Vilà-Cabrera and others 2019), particularly in areas with a long history of human management, such as Mediterranean mountains. Therefore, anthropogenic habitat modification and its legacies represent a critical dimension of marginality as they may intensify, confound or delay climate-driven population decline at the rear edges (Vilà-Cabrera and others 2019). This is relevant for tree species that are highly sensitive to climate change, such as *Quercus pyrenaica*, not only for conservation per se of the species, but for all ecosystem services that these forests offer. In this sense, it needs to be analyzed the resilience of all demographic stages of species, to assure that the observed resilience in adult trees it is also manifested in its demographic recruitment dynamic expressed by the natural regeneration. The rear edge could also differ for different age cohorts or in seedlings compared to resprouts.

ACKNOWLEDGEMENTS

We would like to thank to Sammy L. Behle, F.J. Bonet, and M. Suárez-Muñoz for field assistance. A. Reyes (*in memoriam*) and J. Blanco helped in the filtering of satellite data. F.J. Cano-Manuel and F.J. Navarro provided worthwhile information about oak-management projects in Sierra Nevada. We are grateful for the comments made by F.J. Bonet on an earlier version of the manuscript. We also thank two anonymous reviewers for their thoughtful comments on previous versions of the manuscript that have contributed to improve it significantly. AJPL wishes to thank the invaluable support received from his family over the years. This research work was conducted in the collaborative framework of the “Sierra Nevada Global Change Observatory” monitoring program <http://obsnev.es>. We thank to LIFE-ADAPTAMED (LIFE14 CCA/ES/000612): *Protection of key ecosystem services by adaptive management of Climate Change endangered Mediterranean socioecosystems* for the funding support, and also to H2020 project *European Long-Term Ecosystem and socio-ecological Research Infrastructure (eLTER)* for partial funding.

DATA AVAILABILITY

The data supporting our paper will be available in the following URL https://doi.org/10.1594/PAN_GAEA.922054.

REFERENCES

- Abeli T, Gentili R, Mondoni A, Orsenigo S, Rossi G. 2014. Effects of marginality on plant population performance. *J Biogeogr* 41:239–49.
- Allen CD, Macalady AK, Chenchouni H, Bachelet D, McDowell N, Vennetier M, Kitzberger T, Rigling A, Breshears DD, Hogg EHT, Gonzalez P, Fensham R, Zhang Z, Castro J, Demidova N, Lim J-H, Allard G, Running SW, Semerci A, Cobb N. 2010. A global overview of drought and heat-induced tree mortality reveals emerging climate change risks for forests. *For Ecol Manag* 259:660–84.
- Babst F, Poulter B, Bodesheim P, Mahecha MD, Frank DC. 2017. Improved tree-ring archives will support earth-system science. *Nat Ecol Evol* 1:0008.
- Babst F, Poulter B, Trouet V, Tan K, Neuwirth B, Wilson R, Carrer M, Grabner M, Tegel W, Levanic T, Panayotov M, Urbinati C, Bouriaud O, Ciais P, Frank D. 2013. Site- and species-specific responses of forest growth to climate across the European continent. *Glob Ecol Biogeogr* 22:706–17.
- Bellingham PJ, Sparrow AD. 2000. Resprouting as a life history strategy in woody plant communities. *Oikos* 89:409–16.
- Bhuyan U, Zang C, Menzel A. 2017. Different responses of multispecies tree ring growth to various drought indices across Europe. *Dendrochronologia* 44:1–8.
- Biondi F, Qeadan F. 2008. A theory-driven approach to tree-ring standardization: defining the biological trend from expected basal area increment. *Tree-Ring Res* 64:81–96.
- Bonet FJ, Aspizua R, Navarro J. 2016. History of Sierra Nevada forest management: Implications for adaptation to global change. In: Zamora R, Pérez-Luque AJ, Bonet FJ, Barea-Azcón JM, Aspizua R, Eds. *Global change impacts in Sierra Nevada: challenges for conservation*. Junta de Andalucía: Consejería de Medio Ambiente y Ordenación del Territorio. p 153–6.
- Bunn AG. 2010. Statistical and visual crossdating in R using the dplR library. *Dendrochronologia* 28:251–8.
- Camacho-Olmedo M, García-Martínez P, Jiménez-Olivencia Y, Menor-Toribio J, Paniza-Cabrera A. 2002. Dinámica evolutiva del paisaje vegetal de la Alta Alpujarra granadina en la segunda mitad del s XX. *Cuadernos Geográficos* 32:25–42.
- Camarero J, Franquesa M, Sangüesa-Barreda G. 2015a. Timing of drought triggers distinct growth responses in Holm oak: implications to predict warming-induced forest defoliation and growth decline. *Forests* 6:1576–97.
- Camarero J, Gazol A, Sangüesa-Barreda G, Oliva J, Vicente-Serrano SM. 2015b. To die or not to die: early warnings of tree dieback in response to a severe drought. *J Ecol* 103:44–57.
- Cañellas I, Del-Río M, Roig S, Montero G. 2004. Growth response to thinning in *Quercus pyrenaica* Willd. Coppice stands in Spanish central mountain. *Ann For Sci* 61:243–50.
- Castro J, Zamora R, Hódar JA, Gómez JM. 2004. Seedling establishment of a boreal tree species (*Pinus sylvestris*) at its southernmost distribution limit: consequences of being in a marginal Mediterranean habitat. *J Ecol* 12:266–77.
- Cavin L, Jump AS. 2017. Highest drought sensitivity and lowest resistance to growth suppression are found in the range core of the tree *Fagus sylvatica* L. Not the equatorial range edge. *Glob Change Biol* 23:362–79.
- Corcuera L, Camarero JJ, Sisó S, Gil-Pelegrín E. 2006. Radial-growth and wood-anatomical changes in overaged *Quercus*

- pyrenaica* coppice stands: functional responses in a new Mediterranean landscape. *Trees* 20:91–8.
- Coulthard BL, Touchan R, Anchukaitis KJ, Meko DM, Sivrikaya F. 2017. Tree growth and vegetation activity at the ecosystem-scale in the eastern Mediterranean. *Environ Res Lett* 12:084008.
- del Río S, Herrero L, Penas Á. 2007. Bioclimatic analysis of the *Quercus pyrenaica* forests in Spain. *Phytocoenologia* 37:541–60.
- Di Filippo A, Alessandrini A, Biondi F, Blasi S, Portoghesi L, Piovesan G. 2010. Climate change and oak growth decline: dendroecology and stand productivity of a Turkey oak (*Quercus cerris* L.) Old stored coppice in Central Italy. *Ann For Sci* 67:706.
- Dobbertin M. 2005. Tree growth as indicator of tree vitality and of tree reaction to environmental stress: a review. *Eur J For Res* 124:319–33.
- Doblas-Miranda E, Alonso R, Arnan X, Bermejo V, Brotons L, de Heras J, Estiarte M, Hódar JA, Llorens P, Lloret F, López-Serrano FR, Martínez-Vilalta J, Moya D, Penuelas J, Pino J, Rodrigo A, Roura-Pascual N, Valladares F, Vilà M, Zamora R, Retana J. 2017. A review of the combination among global change factors in forests, shrublands and pastures of the Mediterranean Region: beyond drought effects. *Glob Planet Chang* 148:42–54.
- Dorado-Liñán I, Akhmetzyanov L, Menzel A. 2017a. Climate threats on growth of rear-edge European beech peripheral populations in Spain. *Int J Biometeorol* 61:2097–110.
- Dorado-Liñán I, Cañellas I, Valbuena-Carabaña M, Gil L, Gea-Izquierdo G. 2017b. Coexistence in the Mediterranean-Temperate transitional border: multi-century dynamics of a mixed old-growth forest under global change. *Dendrochronologia* 44:48–57.
- Dorado-Liñán I, Piovesan G, Martínez-Sancho E, Gea-Izquierdo G, Zang C, Cañellas I, Castagneri D, Di Filippo A, Gutiérrez E, Ewald J, Fernández-de-Uña L, Hornstein D, Jantsch MC, Levanič T, Mellert KH, Vacchiano G, Zlatanov T, Menzel A. 2019. Geographical adaptation prevails over species-specific determinism in trees' vulnerability to climate change at Mediterranean rear-edge forests. *Glob Change Biol* 25:1296–314.
- Dorado-Liñán I, Zorita E, Martínez-Sancho E, Gea-Izquierdo G, Filippo AD, Gutiérrez E, Levanič T, Piovesan G, Vacchiano G, Zang C, Zlatanov T, Menzel A. 2017c. Large-scale atmospheric circulation enhances the Mediterranean East-West tree growth contrast at rear-edge deciduous forests. *Agric For Meteorol* 239:86–95.
- Fatichi S, Leuzinger S, Körner C. 2014. Moving beyond photosynthesis: from carbon source to sink-driven vegetation modeling. *New Phytol* 201:1086–95.
- Foster D, Swanson F, Aber J, Burke I, Brokaw N, Tilman D, Knapp A. 2003. The importance of land-use legacies to ecology and conservation. *BioScience* 53:77–88.
- Franco A. 1990. *Quercus* L. In: Castroviejo A, Laínz M, López-González G, Montserrat P, Muñoz-Garmendia F, Paiva J, Villar L, (eds.) *Flora Ibérica*. Vol. 2. Madrid: Real Jardín Botánico, CSIC, pp 15–36.
- Fritts HC. 1976. *Tree rings and climate*. London: Academic Press.
- García-González I, Souto-Herrero M. 2017. Earlywood vessel area of *Quercus pyrenaica* Willd. Is a powerful indicator of soil water excess at growth resumption. *Eur J For Res* 136:329–44.
- Gaston KJ. 2009. Geographic range limits: achieving synthesis. *Proc R Soc B Biol Sci* 276:1395–406.
- Gazol A, Camarero JJ, Vicente-Serrano SM, Sánchez-Salguero R, Gutiérrez E, de Luis M, Sangüesa-Barreda G, Novak K, Rozas V, Tiscar PA, Linares JC, Martín-Hernández N, Martínez del Castillo E, Ribas M, García-González I, Silla F, Camisón A, Génova M, Olano JM, Longares LA, Hevia A, Tomás-Burguera M, Galván JD. 2018. Forest resilience to drought varies across biomes. *Glob Change Biol* 24:2143–58.
- Gea-Izquierdo G, Cañellas I. 2009. Analysis of holm oak intraspecific competition using gamma regression. *For Sci* 55:310–22.
- Gea-Izquierdo G, Cañellas I. 2014. Local climate forces instability in long-term productivity of a Mediterranean oak along climatic gradients. *Ecosystems* 17:228–41.
- Gea-Izquierdo G, Cherubini P, Cañellas I. 2011. Tree-rings reflect the impact of climate change on *Quercus ilex* L. Along a temperature gradient in Spain over the last 100years. *For Ecol Manag* 262:1807–16.
- Gea-Izquierdo G, Fernández-de-Uña L, Cañellas I. 2013. Growth projections reveal local vulnerability of Mediterranean oaks with rising temperatures. *For Ecol Manag* 305:282–93.
- Gea-Izquierdo G, Montes F, Gavilán RG, Cañellas I, Rubio A. 2015. Is this the end? Dynamics of a relict stand from pervasively deforested ancient Iberian pine forests. *Eur J For Res* 134:525–36.
- Gea-Izquierdo G, Nicault A, Battipaglia G, Dorado-Liñán I, Gutiérrez E, Ribas M, Guiot J. 2017. Risky future for Mediterranean forests unless they undergo extreme carbon fertilization. *Glob Change Biol* 23:2915–27.
- Hampe A, Petit RJ. 2005. Conserving biodiversity under climate change: the rear edge matters. *Ecol Lett* 8:461–7.
- Haylock MR, Hofstra N, Klein Tank AMG, Klok EJ, Jones PD, New M. 2008. A European daily high-resolution gridded data set of surface temperature and precipitation for 19502006. *J Geophys Res* 113:D20119.
- Herrero A, Rigling A, Zamora R. 2013. Varying climate sensitivity at the dry distribution edge of *Pinus sylvestris* and *P. nigra*. *For Ecol Manag* 308:50–61.
- Herrero A, Zamora R. 2014. Plant responses to extreme climatic events: a field test of resilience capacity at the southern range edge. *PLoS One* 9:e87842.
- Hodgson D, McDonald JL, Hosken DJ. 2015. What do you mean, 'resilient'? *Trends Ecol Evol* 30:503–6.
- Holling CS. 1973. Resilience and stability of ecological systems. *Ann Rev Ecol Syst* 4:1–23.
- Holmes RL. 1983. Computer-assisted quality control in tree-ring dating and measurement. *Tree Ring Bull* 43:69–78.
- Huang M, Wang X, Keenan TF, Piao S. 2018. Drought timing influences the legacy of tree growth recovery. *Glob Change Biol* 24:3546–59.
- Ingrisch J, Bahn M. 2018. Towards a comparable quantification of resilience. *Trends Ecol Evol* 33:251–9.
- Jiménez-Olivencia Y, Porcel L, Caballero A. 2015. Medio siglo en la evolución de los paisajes naturales y agrarios de Sierra Nevada (España). *Boletín de la Asociación de Geógrafos Españoles* 68:205–32.
- Körner C. 2013. Growth controls photosynthesis mostly. *Nova Acta Leopoldina* 114:273–83.
- Lloret F, Escudero A, Iriondo JM, Martínez-Vilalta J, Valladares F. 2012. Extreme climatic events and vegetation: the role of stabilizing processes. *Glob Change Biol* 18:797–805.

- Lloret F, Keeling EG, Sala A. 2011. Components of tree resilience: effects of successive low-growth episodes in old ponderosa pine forests. *Oikos* 120:1909–20.
- Lloret F, Siscart D, Dalmases C. 2004. Canopy recovery after drought dieback in holm-oak Mediterranean forests of Catalonia (NE Spain). *Glob Change Biol* 10:2092–9.
- Lorite J, Salazar C, Peñast J, Valle F. 2008. Phytosociological review on the forests of *Quercus pyrenaica* Willd. *Acta Botanica Gallica* 155:219–33.
- Mair P, Wilcox R. 2020. Robust statistical methods in R using the WRS2 package. *Behav Res Methods* 52:464–488.
- Martínez-Sancho E, Gutiérrez Merino E. 2019. Evidence that the Montseny Mountains are still a good climatic refugium for the southernmost silver fir forest on the Iberian Peninsula. *Dendrochronologia* 56:125593.
- Martínez-Vilalta J. 2018. The rear window: structural and functional plasticity in tree responses to climate change inferred from growth rings. *Tree Physiol* 38(2):155–8.
- Mausolf K, Härdtle W, Jansen K, Delory BM, Hertel D, Leuschner C, Temperton VM, von Oheimb G, Fichtner A. 2018. Legacy effects of land-use modulate tree growth responses to climate extremes. *Oecologia* 187:825–37.
- Munteanu C, Kuemmerle T, Keuler NS, Müller D, Balázs P, Dobosz M, Griffiths P, Halada L, Kaim D, Király G, Konkoly-Gyuró É, Kozak J, Lieskovsky J, Ostafin K, Ostapowicz K, Shandra O, Radeloff VC. 2015. Legacies of 19th century land use shape contemporary forest cover. *Glob Environ Change* 34:83–94.
- Navarro-González I, Pérez-Luque AJ, Bonet FJ, Zamora R. 2013. The weight of the past: land-use legacies and recolonization of pine plantations by oak trees. *Ecol Appl* 23:1267–76.
- Nowacki GJ, Abrams MD. 1997. Radial-growth averaging criteria for reconstructing disturbance histories from presettlement-originating oaks. *Ecological Monographs* 67:225–49.
- Olalde M, Herrán A, Espinel S, Goicoechea PG. 2002. White oaks phylogeography in the Iberian Peninsula. *For Ecol Manag* 156:89–102.
- Oldfather MF, Kling MM, Sheth SN, Emery NC, Ackerly DD. 2020. Range edges in heterogeneous landscapes: integrating geographic scale and climate complexity into range dynamics. *Glob Change Biol* 26:1055–67.
- Páscoa P, Gouveia C, Russo A, Trigo R. 2017. Drought trends in the Iberian Peninsula over the last 112 years. *Adv Meteorol* 4653126. <https://doi.org/10.1155/2017/4653126>
- Peña-Gallardo M, Vicente-Serrano S, Camarero J, Gazol A, Sánchez-Salguero R, Domínguez-Castro F, El Kenawy A, Beguería-Portugés S, Gutiérrez E, de Luis M, Sangüesa-Barreda G, Novak K, Rozas V, Tíscar P, Linares J, Martínez del Castillo E, Ribas Matamoros M, García-González I, Silla F, Camisón Á, Génova M, Olano J, Longares L, Hevia A, Galván J. 2018. Drought sensitiveness on forest growth in peninsular Spain and the Balearic Islands. *Forests* 9:524.
- Peñuelas J, Lloret F, Montoya R. 2001. Severe drought effects on Mediterranean woody Flora in Spain. *For Sci* 47:214–18.
- Pérez-Luque AJ, Pérez-Pérez R, Bonet-García FJ, Magaña PJ. 2015a. An ontological system based on MODIS images to assess ecosystem functioning of Natura 2000 habitats: a case study for *Quercus pyrenaica* forests. *Int J Appl Earth Observ Geoinf* 37:142–51.
- Pérez-Luque AJ, Zamora R, Bonet FJ, Pérez-Pérez R. 2015b. Dataset of MIGRAME project (global change, altitudinal range shift and colonization of degraded habitats in Mediterranean mountains). *PhytoKeys* 56:61–81.
- Piovesan G, Biondi F, Filippo AD, Alessandrini A, Maugeri M. 2008. Drought-driven growth reduction in old beech (*Fagus sylvatica* L.) Forests of the central Apennines, Italy. *Glob Change Biol* 14:1265–81.
- Pironon S, Papuga G, Vilellas J, Angert AL, García MB, Thompson JD. 2017. Geographic variation in genetic and demographic performance: new insights from an old biogeographical paradigm: the centre-periphery hypothesis. *Biol Rev* 92:1877–909.
- Rehm EM, Olivás P, Stroud J, Feeley KJ. 2015. Losing your edge: climate change and the conservation value of range-edge populations. *Ecol Evol* 5:4315–26.
- Reyes-Díez A, Alcaraz-Segura D, Cabello-Piñar J. 2015. Implicaciones del filtrado de calidad del índice de vegetación EVI para el seguimiento funcional de ecosistemas. *Revista de Teledetección* 2015:11–29.
- Rubino DL, McCarthy BC. 2004. Comparative analysis of dendroecological methods used to assess disturbance events. *Dendrochronologia* 21:97–115.
- Sagarin RD, Gaines SD. 2002. The ‘abundant centre’ distribution: to what extent is it a biogeographical rule? *Ecol Lett* 5:137–47.
- Salzer MW, Hughes MK, Bunn AG, Kipfmüller KF. 2009. Recent unprecedented tree-ring growth in bristlecone pine at the highest elevations and possible causes. *Proc Natl Acad Sci* 106:20348–53.
- Samanta A, Ganguly S, Vermote E, Nemani RR, Myneni RB. 2012. Interpretation of variations in MODIS-measured greenness levels of Amazon forests during 2000 to 2009. *Environ Res Lett* 7:024018.
- Sánchez de Dios R, Gómez C, Aulló I, Cañellas I, Gea-Izquierdo G, Montes F, Sainz-Ollero H, Velázquez JC, Hernández L. 2020. *Fagus sylvatica* L. Peripheral populations in the Mediterranean Iberian Peninsula: climatic or anthropic relicts? *Ecosystems*. <https://doi.org/10.1007/s10021-020-00513-8>.
- Sánchez-Salguero R, Navarro-Cerrillo RM, Swetnam TW, Zavala MA. 2012. Is drought the main decline factor at the rear edge of Europe? The case of southern Iberian pine plantations. *For Ecol Manag* 271:158–69.
- Schwarz J, Skiadaresis G, Kohler M, Kunz J, Schnabel F, Vitali V, Bauhus J. 2020. Quantifying growth responses of trees to drought: a critique of commonly used resilience indices and recommendations for future studies. *Curr Forest Rep*.
- Serra-Díaz JM, Scheller RM, Syphard AD, Franklin J. 2015. Disturbance and climate microrefugia mediate tree range shifts during climate change. *Landsc Ecol* 30:1039–53.
- Sexton JP, McIntyre PJ, Angert AL, Rice KJ. 2009. Evolution and ecology of species range limits. *Ann Rev Ecol Evol Syst* 40:415–36.
- Spinoni J, Naumann G, Vogt J, Barbosa P. 2015. European drought climatologies and trends based on a multi-indicator approach. *Glob Planet Change* 127:50–7.
- Spinoni J, Vogt JV, Naumann G, Barbosa P, Dosio A. 2018. Will drought events become more frequent and severe in Europe? *Int J Climatol* 38:1718–36.
- Stagge JH, Kingston DG, Tallaksen LM, Hannah DM. 2017. Observed drought indices show increasing divergence across Europe. *Sci Rep* 7:14045.
- Tessier L, Nola P, Serre-Bachet F. 1994. Deciduous *Quercus* in the Mediterranean region: tree-ring/climate relationships. *New Phytol* 126:355–67.
- Trigo RM, Añel JA, Barriopedro D, García-Herrera R, Gimeno L, Castillo R, Allen MR, Massey A. 2013. The record winter

- drought of 2011–12 in the Iberian Peninsula. In: Peterson TC, Hoerling MP, Stott PA, Herring S, (eds.) Explaining Extreme Events of 2012 from a Climate Perspective, vol 94, pp S41–5.
- Valbuena-Carabaña M, Gil L. 2013. Genetic resilience in a historically profited root sprouting oak (*Quercus pyrenaica* Willd.) At its southern boundary. *Tree Genet Genomes* 9:1129–42.
- Valbuena-Carabaña M, Gil L. 2017. Centenary coppicing maintains high levels of genetic diversity in a root sprouting oak (*Quercus pyrenaica* Willd.). *Tree Genet Genomes* 13:28.
- Vicente-Serrano SM, Beguería S, López-Moreno JI. 2010. A multiscalar drought index sensitive to global warming: The Standardized Precipitation Evapotranspiration Index. *J Clim* 23:1696–718.
- Vicente-Serrano SM, Gouveia C, Camarero JJ, Beguería S, Trigo R, López-Moreno JI, Azorín-Molina C, Pasho E, Lorenzo-Lacruz J, Revuelto J, Morán-Tejeda E, Sanchez-Lorenzo A. 2013. Response of vegetation to drought time-scales across global land biomes. *Proc Natl Acad Sci* 110:52–7.
- Vicente-Serrano SM, López-Moreno JI, Beguería S, Lorenzo-Lacruz J, Sanchez-Lorenzo A, García-Ruiz JM, Azorín-Molina C, Morán-Tejeda E, Revuelto J, Trigo R, Coelho F, Espejo F. 2014. Evidence of increasing drought severity caused by temperature rise in southern Europe. *Environ Res Lett* 9:044001.
- Vilà-Cabrera A, Espelta JM, Vayreda J, Pino J. 2017. ‘New forests’ from the twentieth century are a relevant contribution for C storage in the Iberian Peninsula. *Ecosystems* 20:130–43.
- Vilà-Cabrera A, Jump AS. 2019. Greater growth stability of trees in marginal habitats suggests a patchy pattern of population loss and retention in response to increased drought at the rear edge: tree growth responses at the rear edge. *Ecol Lett* 22:1439–48.
- Vilà-Cabrera A, Martínez-Vilalta J, Vayreda J, Retana J. 2011. Structural and climatic determinants of demographic rates of Scots pine forests across the Iberian Peninsula. *Ecol Appl* 21:1162–72.
- Vilà-Cabrera A, Premoli AC, Jump AS. 2019. Refining predictions of population decline at species’ rear edges. *Glob Change Biol* 25:1549–60.
- Wilcox R. 2012. Introduction to robust estimation and hypothesis testing. 3rd edn. New York: Academic Press.
- Zang C, Biondi F. 2015. Treeclim: an R package for the numerical calibration of proxy-climate relationships. *Ecography* 38:431–6.
- Zhang Y, Peng C, Li W, Fang X, Zhang T, Zhu Q, Chen H, Zhao P. 2013. Monitoring and estimating drought-induced impacts on forest structure, growth, function, and ecosystem services using remote-sensing data: recent progress and future challenges. *Environ Rev* 21:103–15.