

## A suggested classification for two groups of *Campylobacter* myoviruses

Muhammad Afzal Javed · Hans-Wolfgang Ackermann · Joana Azeredo ·  
Carla M. Carvalho · Ian Connerton · Stephane Evoy · Jens André Hammerl ·  
Stefan Hertwig · Rob Lavigne · Amit Singh · Christine M. Szymanski ·  
Andrew Timms · Andrew M. Kropinski

Received: 23 April 2013 / Accepted: 2 June 2013 / Published online: 24 July 2013  
© Her Majesty the Queen in Right of Canada 2013

**Abstract** Most *Campylobacter* bacteriophages isolated to date have long contractile tails and belong to the family *Myoviridae*. Based on their morphology, genome size and endonuclease restriction profile, *Campylobacter* phages were originally divided into three groups. The recent genome sequencing of seven virulent campylophages reveal further details of the relationships between these phages at the genome organization level. This article details the morphological and genomic features among the campylophages, investigates their taxonomic position, and proposes the creation of two new genera, the “Cp220likevirus” and “Cp8unalikevirus” within a proposed subfamily, the “Eucampyvirinae”

### Introduction

Over 200 bacteriophages infecting *Campylobacter coli* or *Campylobacter jejuni* have been isolated, the great majority being members of the *Myoviridae*, although ten have been classified as belonging to the *Siphoviridae* [1–16]. These phages were isolated with or without enrichment from intestinal contents; human, porcine, and avian fecal matter; sewage; and cultures of lysogenic strains. They are used for typing *Campylobacter* isolates [17–21] and have been proposed for use in eliminating this bacterium from the intestinal tract of chickens (phage therapy) [22–31] and biocontrol of pathogens on produce and carcasses (aka biocontrol) [1, 32–34].

Unfortunately, the lack of uniform classification criteria and often poor quality of electron micrographs make it very difficult to group them into taxonomic clusters. Morphology, genome size determined by pulsed-field gel

---

**Electronic supplementary material** The online version of this article (doi:10.1007/s00705-013-1788-2) contains supplementary material, which is available to authorized users.

---

M. A. Javed · C. M. Szymanski  
Department of Biological Sciences, Alberta Glycomics Centre,  
University of Alberta, Edmonton, AB T6G 2E9, Canada  
e-mail: majaved@ualberta.ca

C. M. Szymanski  
e-mail: cszymans@ualberta.ca

H.-W. Ackermann  
Department of Microbiology, Immunology, and Infectiology,  
Faculty of Medicine, Laval University, Quebec, QC  
G1K 7P4, Canada  
e-mail: ackermann@mcb.ulaval.ca

J. Azeredo · C. M. Carvalho  
IBB, Institute for Biotechnology and Bioengineering,  
Centre of Biological Engineering, Universidade do Minho,  
Campus de Gualtar, 4710-057 Braga, Portugal  
e-mail: jazeredo@deb.uminho.pt

C. M. Carvalho  
e-mail: carlacarvalho@deb.uminho.pt

I. Connerton · A. Timms  
Division of Food Sciences, School of Biosciences, University of  
Nottingham, Sutton Bonington Campus, Sutton Bonington,  
Leicestershire LE12 5RD, UK  
e-mail: Ian.Connerton@nottingham.ac.uk

A. Timms  
e-mail: andrew.timms@nottingham.ac.uk

S. Evoy · A. Singh  
Department of Electrical and Computer Engineering, National  
Institute for Nanotechnology, National Research Council of  
Canada, University of Alberta, Edmonton, AB T6G 2V4, Canada  
e-mail: evoy@ece.ualberta.ca

A. Singh  
e-mail: amit2@ualberta.ca

electrophoresis (PFGE), and susceptibility to digestion with restriction endonucleases [1–3, 5, 11] have been used to classify some of these viruses into three groups: Group I *Campylobacter* phages possess genomes of at least 320 kb and heads of 143 nm. Group II phages have isometric capsids of about 99 nm in diameter and genomes of 180–194 kb in size that are resistant to digestion with HhaI endonuclease (GCG↓C). The members of the last group (III) have head sizes of 100 nm and 130–140-kb genomes that are digestible by HhaI [5].

The integration of genome-based information into official taxonomy was proposed for the *Myoviridae* [35]. In addition, a more recent review of the “T4 superfamily of viruses” defined T4-related bacteriophages as possessing a core genome encoding approximately 37 proteins [36]. This included *Campylobacter* phages CPt10 and CP220 [37], *Delftia* phage φW-14 (NC\_013697), and *Salmonella* phage ViI [38]. Adriaenssens and colleagues [39] have recently extended this work by defining a new genus “Viunalikevirus”, which contains six phages related to *Salmonella* phage ViI. Here, we investigate the taxonomic position of fully sequenced *Campylobacter* phages and propose the creation of two new genera, the “Cp220likevirus” and “Cp8unalikevirus”, within a proposed subfamily, the “Eucampyvirinae.”

## Results

### Bacteriophages

We compared seven bacteriophages, belonging to group II (CP220, CPt10, vB\_CcoM-IBB\_35, CP21) or III (CP81, CPX, NCTC 12673). The phages had been isolated in

different places and ecosystems at different times and in different surroundings. Phage vB\_CcoM-IBB\_35 (also known as phiCcoIBB35) was isolated from the intestines of free-range chickens in Braga, Portugal; CP81 was isolated from the skin of a retail chicken from Bavaria, Germany; CP220 and CPX were also recovered from a retail chicken from the United Kingdom; CPt10 was recovered from slaughterhouse effluent in the United Kingdom; CP21 was isolated from an organic farm in Berlin, Germany. NCTC 12673 was enriched from U.S. poultry excreta. For further details of each phage, the reader is referred to the original publications (see Table 1). In this manuscript, *Campylobacter* phages will subsequently sometimes be called “campylophages.”

### Morphology

The campylophages have isometric heads and contractile tails and are thus members of the *Myoviridae*. The morphologies of representative *Campylobacter* phages are shown in Figs. 1 and 2. Their dimensions are reported in Table 2. The most noticeable difference between the phages of groups II and III is the length of the tail.

Heads are icosahedral, as proven by the observation of both hexagonal and pentagonal capsids. Heads positively stained with uranyl acetate are always shrunken. These phages have necks, but no collars and no apparent base plates. Tail fibers are short and thin. Group II phages (Fig. 1) have longer tails and appear often in pairs held together by entangled tail fibers. Tails are generally extended. Some tails have incomplete sheaths; this represents a hitherto unreported type of morphological aberration. Group III phages (Fig. 2) are unremarkable except that contracted tail tips appear typically adsorbed to spherical vesicles of probable bacterial origin. Preservation of CP220 was difficult as the phage was easily inactivated by rupture of the head and tail contraction.

### DNA properties

Cohesive ends could not be detected in either group, while Bal31 analyses suggested that the genomes of these phages are circularly permuted.

While DNA from *Campylobacter* can be readily isolated, spectrophotometrically quantified, digested with common restriction endonucleases, and amplified using Taq polymerase, the same cannot be said for the genomes of its phages. Proteinase-K-treated DNA from phages NCTC 12673, vB\_CcoM-IBB\_35, and CP81 partitioned, upon phenol extraction, into the interphase [11, 14]. Commonalities between phages NCTC 12673 (group III) and vB\_CcoM-IBB\_35 (group II) are that their DNA could not be accurately quantified using a NanoDrop spectrophotometer (NanoDrop products, Wilmington, DE),

J. A. Hammerl · S. Hertwig  
Bundesinstitut für Risikobewertung, Max-Dohrn Straße 8-10,  
10589 Berlin, Germany  
e-mail: jens-andre.hammerl@bfr.bund.de

S. Hertwig  
e-mail: stefan.hertwig@bfr.bund.de

R. Lavigne  
Laboratory of Gene Technology, Katholieke Universiteit  
Leuven, Kasteelpark Arenberg 21-b2462, 3001 Heverlee,  
Belgium  
e-mail: Rob.Lavigne@biw.kuleuven.be

A. M. Kropinski (✉)  
Laboratory for Foodborne Zoonoses, Public Health Agency  
of Canada, Guelph, ON N1G 3W4, Canada  
e-mail: kropinsk@queensu.ca

A. M. Kropinski  
Department of Molecular and Cellular Biology, University  
of Guelph, Guelph, ON N1G 2W1, Canada

**Table 1** Genomic and morphological features of the phages compared in this study

Phage	Head (nm)	Tail (nm)	Genome (bp)	Mol% G+C	ORFs	tRNAs	HE*	Ref	Accession number
Group II									
CP220	96, 97**	110 x 16, 142 x 18**	177,534	27.4	194	2	1	[10, 37]	FN667788
CPT10			175,720	27.3	199	2	1	[37]	FN667789
vB_CcoM-IBB_35	99	142	172,065***	27.2	207	2	2	[13, 26, 68]	HM246720- HM246724
CP21			182,788	27.1	170	2		[12]	HE815464
Group III									
CP81	96	98 x 20	132,454	26.0	181	5	10	[11]	FR823450
CPX			132,662	26.0	149	5	9		JN132397
NCTC12673	80, 96**	100, 115 x 18**	135,041	26.1	166	3	10	[14]	GU296433

\* HE, homing endonucleases.\*\* This work, measured after calibration with T4 phage tails. \*\*\* Note that the genome is not complete and has theoretical gaps of 100, 200, 300 and 400 bp

Note: Because *Campylobacter* phages have a high frequency of polyadenylate runs that can lead to pyrosequencing-introduced frameshifts, it is recommended that their genomes be sequenced by Illumina rather than 454 technology – or that the sequence be examined for potential frameshifts by BLASTX against campylophages CP220 or NCTC12673, whose sequences were determined by Sanger dideoxy sequencing

digested with common restriction endonucleases, or amplified with Taq DNA polymerase [13, 14]. A further discrepancy was found between the predicted genome size of these phages based on PFGE and the actual genome size obtained from sequencing [14]. A detailed restriction analysis of CP81 DNA revealed that only enzymes recognizing AT-rich sequences such as DraI (TTT↓AAA), SmaI (ATTT↓AAAT), and VspI (AT↓TAAT) cleaved the DNA efficiently.

The fact that the phage DNA was predominantly found at the phenol-water interface suggested the presence of tightly-bound proteins or a change in the hydrophobicity of the DNA through enzymatic modification. *In silico* analysis for phage-specific histone-like proteins failed to reveal any likely candidates. Also, amplification of CP81 DNA with QIAGEN REPLI-g (φ29 DNA polymerase) resulted in DNA that could be cleaved with common restriction endonucleases, suggesting that the DNA contains unique modifications [11].

One of the interesting features of group II and III phages is that they have similar capsid dimensions but significantly different genome masses. This could be due to differences in the compaction of the phage genomes.

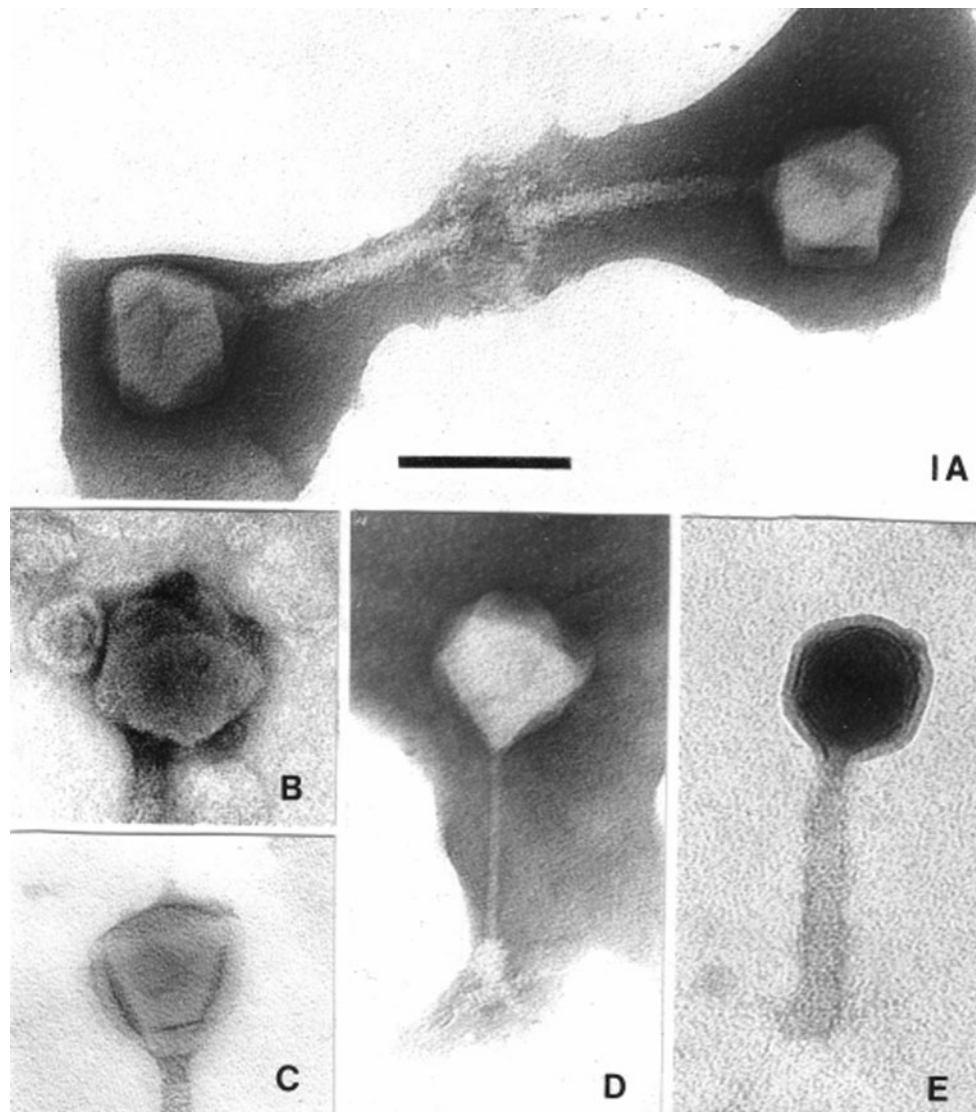
#### Genome organization properties

Based on a number of criteria, including mass, mol%G+C, number of genes for tRNAs and homing endonucleases, plus BLASTN homologs, the fully sequenced *Campylobacter* phages fall into two groups (Table 1). The first group comprises viruses CP220, CPT10, CP21, and vB\_CcoM-IBB\_35, while the latter contains phages CPX,

CP81 and NCTC 12673. Based upon time of submission to GenBank, the two type phages are CP220 and CP81.

We compared the genomes of the phages using progressiveMauve analysis [40]. The results (Supplementary Figure 1AB) confirm the groupings described above and further indicated that there was almost no DNA sequence relatedness between the two groups of phages. While the genomes of CP220, CPT10 and vB\_CcoM-IBB\_35 are colinear, the genome of CP21 exhibits considerable rearrangement of homologous modules. Group II phages are composed of large modules separated by long DNA repeat regions, which could lead to these rearrangements. The other three phages are circular permutations of one another. This emphasizes the importance of circularly permuted genomes being opened at identical positions so that meaningful comparisons may be made, including the quantitative calculation of the overall DNA sequence identity, using programs such as Stretcher from the EMBOSS suite [41, 42].

At the protein level, similarity was determined using CoreGenes [43, 44] at its default settings (Table 3). Common proteins shared by these two groups of phages include DNA helicase UvsW, RNaseH, topoisomerase (large subunit), putative dUTP pyrophosphatase, poly A polymerase, thymidine kinase, thymidylate synthetase, ribonucleotide reductase (small subunit), co-chaperonin GroES and the following homologs to T4 proteins: gp61 DNA primase subunit, gp44 sliding clamp loader, gp45 sliding clamp, gp62 clamp loader, gp20 portal vertex, gp25 baseplate wedge, gp6 baseplate wedge, gp4 head completion protein, gp23 major capsid, gp18 tail sheath, gp19 tail tube, gp2 DNA end protector, gp5 baseplate hub,



**Fig. 1** Electron micrographs of group II and III *Campylobacter* phages. Phages were sedimented for 1 h at 25,000 g in a Beckman J2-21 centrifuge using a JA18.1 fixed-angle rotor; washed twice in 0.1 M neutral ammonium acetate under the same conditions; deposited on carbon-coated copper grids; stained with ammonium molybdate (2 %, Mol), uranyl acetate (2 %, UA), or phosphotungstate (2 %, PT); and

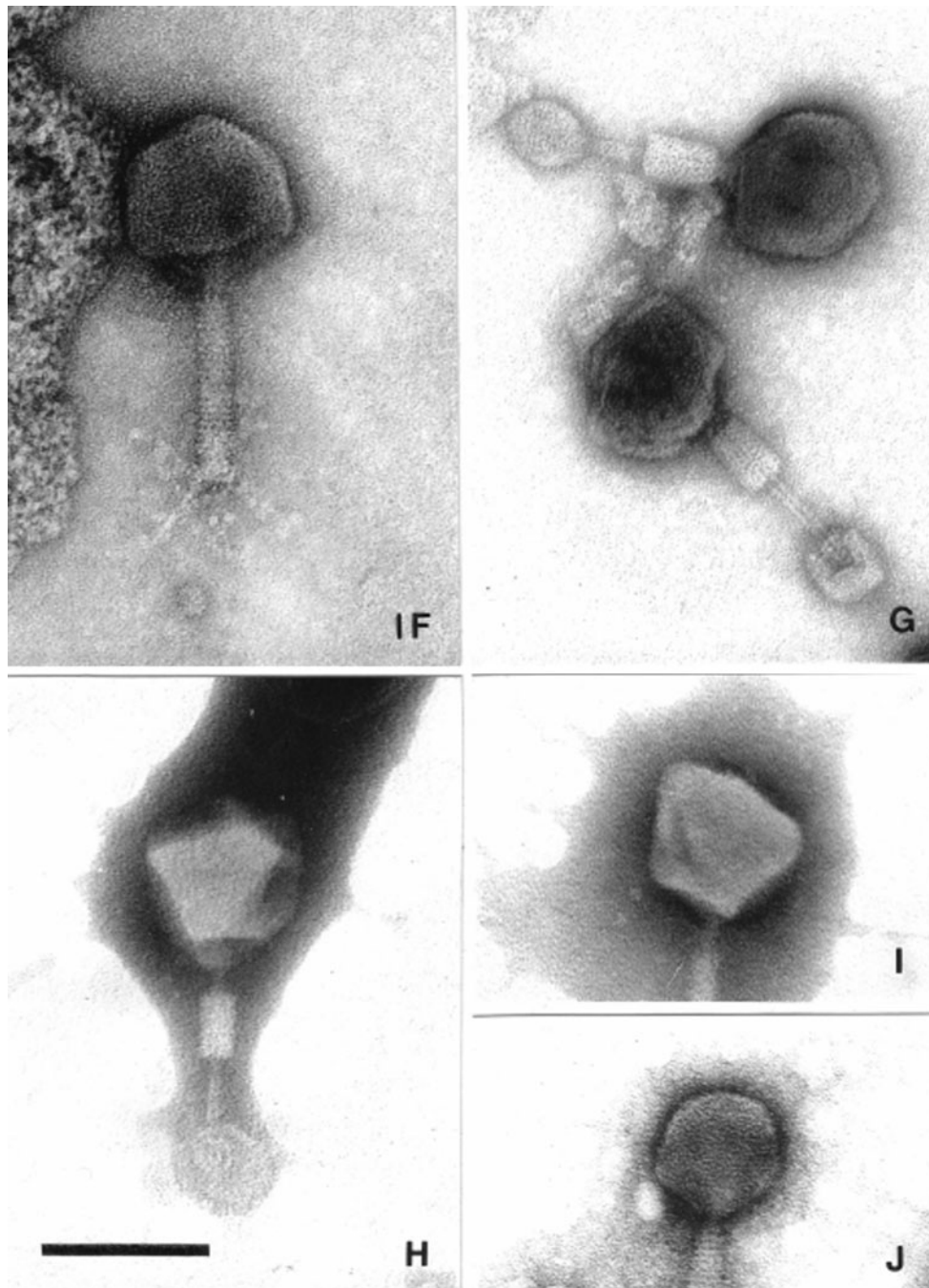
examined in a Philips EM 300 electron microscope. Bars indicate 100 nm. **A–E** Type CP220. **A** Two particles with extended tails assembled end-to-end by entangled tail fibers, Mol. **B, C** Two aspects of pentagonal heads, UA. **D** Particle with partially assembled sheath and denuded tail core, PT. **E** phage with positively stained head and halo around the capsid, UA

gp43 DNA polymerase, gp13 neck, gp41 DNA primase-helicase, gp14 head completion, gp15 tail sheath stabilizer, gp32 ssDNA binding protein, gp3 tail completion, gp21 prohead core scaffold and protease – in other words, the proteins whose genes make up the core genome of T4-like viruses.

#### Regulatory elements

To investigate the existence of unique regulatory regions within the proposed genera, 100 bp of 5' upstream sequence

data was extracted using extractUpStreamDNA (<http://fz.corefacility.ca/extractUpStreamDNA/>) and submitted for MEME analysis at <http://meme.sdsc.edu/meme/cgi-bin/meme.cgi> [45]. Unlike *Escherichia coli* and its relatives, whose RpoD ( $\sigma$ 70)-dependent promoters conform to the consensus sequence TTGACA(N15-17)TATAAT, these promoters in *Campylobacter* display no recognizable -35 element and have a modified -10 sequence (TAWAAT) [46]. A/T-rich repeats are found centered at 5-6, 15-17 and 26 bp upstream of the -10 region. In addition, another A/T-rich region is located 7-14 bp downstream of the -10



**Fig. 2** F–J Type CP81. **F** Normal particle with extended tail and tail fibers, Mol. **G** Two phages with contracted tails adsorbed to small spherical bacterial debris, UA. Note the dark staining of phage heads. **H** A phage with a contracted tail adsorbed to a piece of bacterial

debris, PT. Note the apparent absence of a base plate. **I** A pentagonal head, PT. **J** A smaller-than-normal head, an exceedingly rare morphological aberration, UA

region. Campylophages displayed multiple copies of a consensus sequence TTAAG(N6)TTAAG(N11)TATAAT, with some evidence for an extended  $-10$  region (TGN) [47], which we believe corresponds to early promoters recognized by the host RNA polymerase (Supplementary Figure 2A). The consensus sequence for late transcription in members of the genus *Viunalikevirus* [39] is CTAAATAcCcc, while in

T4, the late promoter core is TATAAATA [48, 49]. MEME analysis revealed another consensus sequence, CAT(N3)WWWCCTTT (Supplementary Figure 2B). In the case of phage NCTC 12673, this sequence was found upstream of the genes encoding the late transcriptional regulator, major head, tail completion, and portal protein and might therefore function as a late-gene promoter.

**Table 2** Approximate dimensions of phages

	Structure	Type CP220 (group II)	Type CP81 (group III)
Head	Diameter	92	96
Tail	Overall	148 × 18	115 × 18
	Striations	32	30
	Neck	8 × 8	8 × 8
	Contracted sheath	40 × 23	43 × 29
	Free core	140 × 8	89 × 8
	Fibers	38 × 2	37 × 2

**Table 3** CoreGenes analysis of phages

Phage	Homologs to CP220	% homologs to CP220	Homologs to CP81	% homologs to CP81
CP220	194	100	65	35.7
CPt10	173	89.2	69	37.9
vB_CcoM-IBB_35	148	76.3	64	35.1
CP21	172	88.7	71	39.0
CP81	67	34.5	182	100
CPX	67	34.5	143	78.6
NCTC 12673	70	36.1	157	86.3

Numbers and frequency of homologs with reference strains CP220 and CP81. Analysis of IBB\_35 was conducted using a MyRAST [69] annotated pseudogenome

### tRNAs and codon usage

An analysis of initiation codon usage of nine of the completely sequenced *C. jejuni* strains using Inidon [50] indicates that AUG is the preferred initiation codon 86.6 % of the time. This is followed by UUG (8.5 %) and GUG (4.7 %). By comparison, campylophage CP220 uses these codons 89.2, 7.2 and 3.6 % of the time. With phage CP81, the predominant codon is AUG (98.3 %), followed by GUG (1.1 %) and ACA (0.5 %). Bacteriophage tRNAs function to enhance translation efficiency, particularly if the cognate codon is poorly represented in the host. The group II and group III phages contain five and two tRNA genes, respectively. The arginyl codon AGA is overrepresented in CP220 and CP81, while the leucyl UUA codon is overrepresented in CP81. Therefore, in these cases, the presence of a phage-encoded tRNA might be advantageous for overall translation efficiency.

### Homing endonucleases

All sequenced *Campylobacter* myoviruses contain homing endonucleases related to Hef [51], which was first found in the T4-like phage U5. This homing endonuclease was located in the *ndrA* gene of the latter phage, while analogous genes (*segH*) are similarly located in T4-like coliphages RB15 and RB32. Altogether, we identified 33 homologs unevenly distributed in numbers between the

campylophages. These sequences vary considerably in length and may be considered pseudogenes, and they show weak similarity to cd00221, Very Short Patch Repair (Vsr) Endonuclease.

Interestingly, Hef-like sequences are absent in the sequenced *Campylobacter* genomes. A phylogenetic tree of a subset of Hef-related protein sequences was constructed using “one-click” *Phylogeny.fr: robust phylogenetic analysis for the non-specialist* at [http://phylogeny.lirmm.fr/phylo.cgi/simple\\_phylogeny.cgi](http://phylogeny.lirmm.fr/phylo.cgi/simple_phylogeny.cgi) [52]. This suite of programs is based upon MUSCLE alignment [53], Gblocks to eliminate poorly aligned positions and divergent regions [54], and PhyML [55]. Supplementary Figure 3 shows the common subclustering of Hef homologs from phages NCTC 12673, CPX and CP81, suggesting lateral transfer of these elements.

### Nature of the large subunit terminase

Using the sequence of the large subunit terminase of *Vibrio* phage KVP40 (NP\_899601) as a TBLASTN probe, two things were immediately apparent: (a) the hits within CPt10, CP220 and vB\_CcoM-IBB\_35 were contiguous sequences, and (b) those in the other three phages were discontinuous and in opposite orientations, i.e., homology to the *N*-terminal portion of the protein was found approximately 22 kb away from the region showing homology to the *C*-terminus. Since these fragments are

associated with inteins, this suggests that the complete terminase protein is produced by intein-mediated protein splicing *in trans* [56–60].

### Receptor specificity

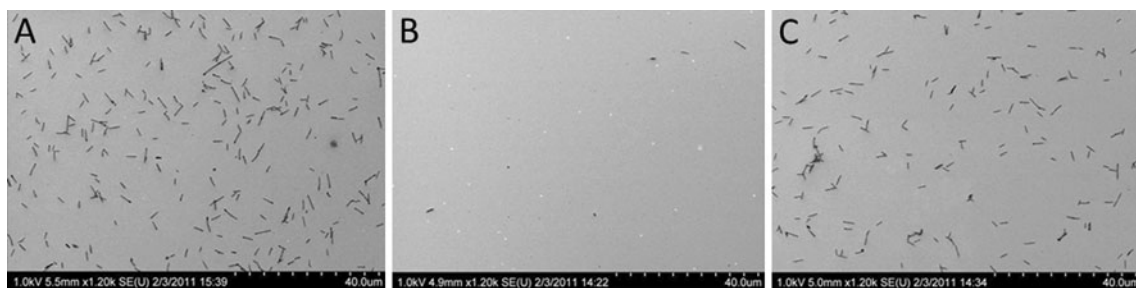
Like phages of other bacterial species, campylophages are also specific for their host strains [3, 61]. They have been reported to recognize different structures on the surface of the host cell including capsular polysaccharides (CPS) [61–63] and flagella [61, 64]. The host specificity of a phage is determined by its receptor-binding proteins (RBPs). The genome sequences of at least seven lytic campylophages have been reported; however, gp047, previously annotated as gp48 [14], is the only putative RBP that has so far been characterized in detail. Gp047 was identified as a putative RBP in phage NCTC 12673 and is a large protein (152 kD) that is capable of agglutinating *C. jejuni* NCTC 11168 cells [14]. Gp047 can also be used to specifically detect *C. jejuni* cells when immobilized onto microbeads, and surface plasmon resonance (SPR) on gp047-derivatized surfaces allows *C. jejuni* detection to  $10^2$  cfu/ml [65].

Gp047 homologs are present in all seven sequenced campylophages. BLASTN analysis (<http://blast.ncbi.nlm.nih.gov/Blast.cgi>) using the gp047 homolog along with the 1000-bp nucleotide sequence downstream of the start codon from phage vB\_CcoM-IBB\_35 (GenBank ID: AEF56819.1) showed that the genomic region encoding the *N*-terminal sequence (~300 amino acids) of the putative RBPs and the downstream sequence is conserved only in campylophages belonging to group II. Similarly, BLASTN comparisons of the downstream sequences of the gp047 homologs in group III clustered together and showed >99 % sequence identity. Interestingly, the *C*-terminal part of gp047 is highly conserved in all the campylophages whose genome sequences have been determined. We designed primers based on the conserved *C*-terminal homologous region and sequenced the gp047 homologs from other campylophages whose genomes have not yet

been sequenced, including NCTC 12678, NCTC 12669 and F336, and the *C*-terminal region in these three phages is also conserved (Supplementary Figure 4). The open reading frame (ORF) size in the region homologous to gp047 is variable in campylophages (Supplementary Figure 5); most interestingly, phage CPX has three ORFs in the region homologous to gp047. In phage CP81, two ORFs of 669 bp and 1854 bp are at the start of the CP81 annotated genome, while another segment of 1086 bp homologous to the gp047 sequence, encoding the *N*-terminal region, is located close to the end of the CP81 genome and was not annotated as an ORF. This is most probably because the CP81 genome is circularly permuted and this 1086-bp segment is part of the 669-bp ORF, which results in a single continuous reading frame of 1755 bp. Remarkably, we found a probable single nucleotide polymorphism (SNP) at 2305 bp in the gp047 homolog from F336. We sequenced this region seven times and five times found a major peak of deoxythymidine (T) and two times observed a deoxyguanosine (G) nucleoside at this position. Translation of the ORF continues when G is present, but its replacement with T results in a stop codon and a gap of a non-coding region of 693 bp followed the 795-bp-long ORF homologous to the *C*-terminal region of gp047.

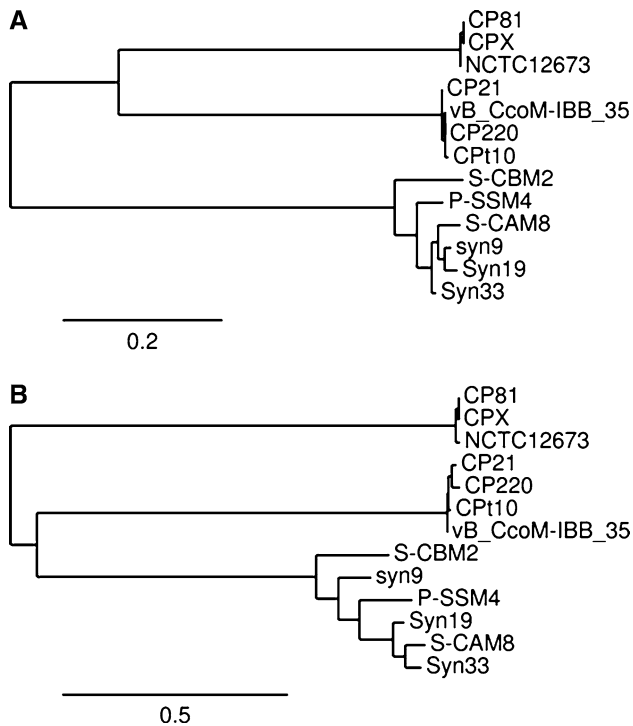
To find out if the host recognition domains of gp047 are localized in the *C*-terminus, we expressed the recombinant protein in truncated *N*- (amino acid residues 1-684) and *C*- (amino acid residues 682-1365) terminal parts and fused each to gold-coated surfaces. The *C. jejuni* binding domains of gp047 are localized in the conserved *C*-terminus (Fig. 3). We are currently in the process of expressing the 795-bp ORF of phage F336 in *E. coli* to check if the host binding domain is also localized in this region. It is exciting to speculate that the F336 phage is evolving to express this smaller ORF independently of the 5'-end 2307-bp ORF or vice versa.

Phylogenetic trees for the major capsid proteins (homologs of T4 gp23; Fig. 4A) and DNA polymerases (homologs of T4 gp43; Fig. 4B) clearly show that there are



**Fig. 3** GST-fused gp047, truncated *N*- (amino acid residues 1-684) and *C*-terminal parts (amino acid residues 682-1365) were immobilized on gold-coated surfaces and binding of *C. jejuni* NCTC 11168 was studied as described earlier [65]. The results showed that the host

binding domains of gp047 are localized in the *C*-terminus as the average density of the captured bacteria by full-length gp047 (A) and its *N*- (B) and *C*-terminal fragments (C) was 5.47, 0.03 and 5.8 per  $100 \mu^2$ , respectively



**Fig. 4** **A** Phylogenetic analysis of gp23 (major capsid protein) homologs of *Campylobacter* and *Synechococcus* phages (S-CBM2 to Syn33). **B** Phylogenetic analysis of gp43 (DNA polymerase) homologs of *Campylobacter* and *Synechococcus* phages

two distinct groups of phages. Furthermore, it is interesting that for many of the campylophages proteins the closest homologs are to be found not in the phylum Proteobacteria, but among phages of the phylum Cyanobacteria.

## Conclusions

The *Campylobacter* phages described here have icosahedral heads and long contractile tails and thus belong to the family *Myoviridae*. In the absence of genome sequences, the *Campylobacter* phages were divided into three groups based on electron microscopic analysis of their head assembly, genome size determined by PFGE, and DNA restriction profiles produced using selected endonucleases [5]. The availability of genome sequences of seven virulent campylophages, which have been published recently, provided further details about the evolution and phylogenetic relationship of these phages. This knowledge can be used for the classification of these viruses. Based on their whole-genome sequence homology and similarity in protein sequences, we suggest grouping these phages into two related genera, exemplified by phages CP220 and CP81. The former, named “Cp220likevirus”, comprises phages CP21, CP220, CPt10, and vB-Ccom-IBB\_35. It corresponds to group II phages of campyloviruses. The second,

named “Cp8unavirus”, corresponds to group III and comprises phages CP81, CPX, and NCTC 12673. The two genera together constitute the tentative subfamily “Eucampyvirinae” within the family *Myoviridae* of the order *Caudovirales*.

This classification is supported by sequence analysis of a putative receptor binding protein (Gp047) and the large subunit terminase, plus phylogenetic analysis of the major capsid protein Gp23, and Gp43-like DNA polymerase. It appears to us to be urgent to sequence *Campylobacter* phages of group I, which might potentially constitute a third genus within the proposed subfamily. Furthermore, the grouping in and within the proposed subfamily “Eucampyvirinae” is consistent with the recently updated classifications within the families *Podoviridae* and *Myoviridae* [35, 66].

**Acknowledgments** AMK would like to thank Andre Villegas for developing “extractUpStreamDNA”. The authors are thankful to Denis Arutyunov and Jessica Sacher for helpful discussions and help with phage preparations, and to Cheryl Nargang for her help with nucleotide sequencing and analysis of gp047 homolog from phage F336. The bacteriophage receptor-binding protein studies were funded by an Alberta Innovates Scholar Award (CMS) and a Natural Sciences and Engineering Research Council of Canada Strategic Grant (CMS). RL and AMK are chair and vice chair, respectively, of the prokaryotic virus subcommittee of the ICTV (International Committee for Taxonomy of Viruses).

**Conflict of interest** The authors declare that they have no conflict of interest.

## References

- Atterbury RJ, Connerton PL, Dodd CE, Rees CE, Connerton IF (2003) Isolation and characterization of *Campylobacter* bacteriophages from retail poultry. *Appl Environ Microbiol* 69:4511–4518
- Connerton PL, Loc Carrillo CM, Swift C, Dillon E, Scott A, Rees CE, Dodd CE, Frost J, Connerton IF (2004) Longitudinal study of *Campylobacter jejuni* bacteriophages and their hosts from broiler chickens. *Appl Environ Microbiol* 70:3877–3883
- Hansen VM, Rosenquist H, Baggesen DL, Brown S, Christensen BB (2007) Characterization of *Campylobacter* phages including analysis of host range by selected *Campylobacter* Penner serotypes. *BMC Microbiol* 7:90
- Fletcher RD (1965) Activity and morphology of *Vibrio coli* phage. *Am J Vet Res* 26:361–364
- Sails AD, Wareing DR, Bolton FJ, Fox AJ, Curry A (1998) Characterisation of 16 *Campylobacter jejuni* and *C. coli* typing bacteriophages. *J Med Microbiol* 47:123–128
- Bryner JH, Ritchie AE, Booth GD, Foley JW (1973) Lytic activity of vibrio phages on strains of *Vibrio fetus* isolated from man and animals. *Appl Microbiol* 26:404–409
- Bryner JH, Ritchie AE, Foley JW, Berman DT (1970) Isolation and characterization of a bacteriophage for *Vibrio fetus*. *J Virol* 6:94–99



8. Loc Carrillo CM, Connerton PL, Pearson T, Connerton IF (2007) Free-range layer chickens as a source of *Campylobacter* bacteriophage. *Antonie van Leeuwenhoek* 92:275–284
9. el-Shibiny A, Connerton PL, Connerton IF (2005) Enumeration and diversity of campylobacters and bacteriophages isolated during the rearing cycles of free-range and organic chickens. *Appl Environ Microbiol* 71:1259–1266
10. el-Shibiny A, Scott A, Timms A, Metawea Y, Connerton P, Connerton I (2009) Application of a group II *Campylobacter* bacteriophage to reduce strains of *Campylobacter jejuni* and *Campylobacter coli* colonizing broiler chickens. *J Food Prot* 72:733–740
11. Hammerl JA, Jackel C, Reetz J, Beck S, Alter T, Lurz R, Barretto C, Brüssow H, Hertwig S (2011) *Campylobacter jejuni* group III phage CP81 contains many T4-like genes without belonging to the T4-type phage group: implications for the evolution of T4 phages. *J Virol* 85:8597–8605
12. Hammerl JA, Jackel C, Reetz J, Hertwig S (2012) The complete genome sequence of bacteriophage CP21 reveals modular shuffling in *Campylobacter* group II phages. *J Virol* 86:8896
13. Carvalho CM, Kropinski AM, Lingohr EJ, Santos SB, King J, Azeredo J (2012) The genome and proteome of a *Campylobacter coli* bacteriophage vB\_CcoM-IBB\_35 reveal unusual features. *Virol J* 9:35
14. Kropinski AM, Arutyunov D, Foss M, Cunningham A, Ding W, Singh A, Pavlov AR, Henry M, Evoy S, Kelly J, Szymanski CM (2011) Genome and proteome of *Campylobacter jejuni* bacteriophage NCTC 12673. *Appl Environ Microbiol* 77:8265–8271
15. Owens J, Barton MD, Heuzenroeder MW (2012) The isolation and characterization of *Campylobacter jejuni* bacteriophages from free range and indoor poultry. *Vet Microbiol* 162:144–150
16. Hwang S, Yun J, Kim KP, Heu S, Lee S, Ryu S (2009) Isolation and characterization of bacteriophages specific for *Campylobacter jejuni*. *Microbiol Immunol* 53:559–566
17. Frost JA, Kramer JM, Gillanders SA (1999) Phage typing of *Campylobacter jejuni* and *Campylobacter coli* and its use as an adjunct to serotyping. *Epidemiol Infect* 123:47–55
18. Grajewski BA, Kusek JW, Gelfand HM (1985) Development of a bacteriophage typing system for *Campylobacter jejuni* and *Campylobacter coli*. *J Clin Microbiol* 22:13–18
19. Khakhria R, Lior H (1992) Extended phage-typing scheme for *Campylobacter jejuni* and *Campylobacter coli*. *Epidemiol Infect* 108:403–414
20. Bryner JH, Ritchie AE, Foley JW (1982) Techniques for phage typing *Campylobacter jejuni*. In: Newell DG (ed) *Campylobacter: epidemiology, pathogenesis, and biochemistry*. MTP Press, Lancaster, pp 52–55
21. Salama SM, Bolton FJ, Hutchinson DN (1990) Application of a new phage typing scheme to campylobacters isolated during outbreaks. *Epidemiol Infect* 104:405–411
22. Carvalho CM, Gannon BW, Halfhide DE, Santos SB, Hayes CM, Roe JM, Azeredo J (2010) The *in vivo* efficacy of two administration routes of a phage cocktail to reduce numbers of *Campylobacter coli* and *Campylobacter jejuni* in chickens. *BMC Microbiol* 10:232
23. Lin J (2009) Novel approaches for *Campylobacter* control in poultry. *Foodborne Pathog Dis* 6:755–765
24. Connerton PL, Timms AR, Connerton IF (2011) *Campylobacter* bacteriophages and bacteriophage therapy. *J Appl Microbiol* 111:255–265
25. Havelaar AH, Mangen MJ, de Koeijer AA, Bogaardt MJ, Evers EG, Jacobs-Reitsma WF, van PW, Wagenaar JA, de Wit GA, van der Zee H, Nauta MJ (2007) Effectiveness and efficiency of controlling *Campylobacter* on broiler chicken meat. *Risk Anal* 27:831–844
26. Carvalho CM, Gannon BW, Halfhide DE, Santos SB, Hayes CM, Roe JM, Azeredo J (2010) The *in vivo* efficacy of two administration routes of a phage cocktail to reduce numbers of *Campylobacter coli* and *Campylobacter jejuni* in chickens. *BMC Microbiol* 10:232
27. Carvalho CAOCM (2010) Use of bacteriophages to control *Campylobacter* in poultry. PhD thesis. Escola de Engenharia, Universidade de Minho, Braga
28. Carvalho CM, Santos SB, Kropinski AM, Ferreira EC, Azeredo J (2012) Phages as therapeutic tools to control major foodborne pathogens: *Campylobacter* and *Salmonella*. In: Kurtboke I (ed) *Bacteriophages*. InTech, Rijeka, pp 179–214
29. Loc Carrillo C, Atterbury RJ, el-Shibiny A, Connerton PL, Dillon E, Scott A, Connerton IF (2005) Bacteriophage therapy to reduce *Campylobacter jejuni* colonization of broiler chickens. *Appl Environ Microbiol* 71:6554–6563
30. Wagenaar JA, Van Bergen MA, Mueller MA, Wassenaar TM, Carlton RM, Wagenaar JA, Van Bergen MAP, Mueller MA, Wassenaar TM, Carlton RM (2005) Phage therapy reduces *Campylobacter jejuni* colonization in broilers. *Vet Microbiol* 109:275–283
31. Wagenaar JA, Mevius DJ, Havelaar AH (2006) *Campylobacter* in primary animal production and control strategies to reduce the burden of human campylobacteriosis. *Revue Scientifique et Technique* 25:581–594
32. Orquera S, Golz G, Hertwig S, Hammerl J, Sparborth D, Joldic A, Alter T (2012) Control of *Campylobacter* spp. and *Yersinia enterocolitica* by virulent bacteriophages. *J Mol Genet Med* 6:273–278
33. Goode D, Allen VM, Barrow PA (2003) Reduction of experimental *Salmonella* and *Campylobacter* contamination of chicken skin by application of lytic bacteriophages. *Appl Environ Microbiol* 69:5032–5036
34. Atterbury RJ, Connerton PL, Dodd CE, Rees CE, Connerton IF (2003) Application of host-specific bacteriophages to the surface of chicken skin leads to a reduction in recovery of *Campylobacter jejuni*. *Appl Environ Microbiol* 69:6302–6306
35. Lavigne R, Darius P, Summer EJ, Seto D, Mahadevan P, Nilsson AS, Ackermann H-W, Kropinski AM (2009) Classification of *Myoviridae* bacteriophages using protein sequence similarity. *BMC Microbiol* 9:224
36. Petrov VM, Ratnayaka S, Nolan JM, Miller ES, Karam JD (2010) Genomes of the T4-related bacteriophages as windows on microbial genome evolution. *Virol J* 7:292
37. Timms AR, Cambray-Young J, Scott AE, Petty NK, Connerton PL, Clarke L, Seeger K, Quail M, Cummings N, Maskell DJ, Thomson NR, Connerton IF (2010) Evidence for a lineage of virulent bacteriophages that target *Campylobacter*. *BMC Genomics* 11:214
38. Pickard D, Toribio AL, Petty NK, van TA, Yu L, Goulding D, Barrell B, Rance R, Harris D, Wetter M, Wain J, Choudhary J, Thomson N, Dougan G (2010) A conserved acetyl esterase domain targets diverse bacteriophages to the Vi capsular receptor of *Salmonella enterica* serovar Typhi. *J Bacteriol* 192:5746–5754
39. Adriaenssens EM, Ackermann HW, Anany H, Blasdel B, Connerton IF, Goulding D, Griffiths MW, Hooton SP, Kutter EM, Kropinski AM, Lee JH, Maes M, Pickard D, Ryu S, Sepehrizadeh Z, Shahrabak SS, Toribio AL, Lavigne R (2012) A suggested new bacteriophage genus: “Viunalikevirus”. *Arch Virol* 157:2035–2046
40. Darling AE, Mau B, Perna NT (2010) progressiveMauve: multiple genome alignment with gene gain, loss and rearrangement. *PLoS ONE* 5:e11147
41. Ceysens PJ, Glonti T, Kropinski NM, Lavigne R, Chanishvili N, Kulakov L, Lashkhi N, Tediashvili M, Merabishvili M (2011)

- Phenotypic and genotypic variations within a single bacteriophage species. *Virology* 8:134
42. Olson SA, Olson SA (2002) EMBOSS opens up sequence analysis. *European Molecular Biology Open Software Suite. Briefings Bioinform* 3:87–91
  43. Zafar N, Mazumder R, Seto D (2002) CoreGenes: a computational tool for identifying and cataloging “core” genes in a set of small genomes. *BMC Bioinform* 3:12
  44. Kropinski AM, Borodovsky M, Carver TJ, Cerdeno-Tarraga AM, Darling A, Lomsadze A, Mahadevan P, Stothard P, Seto D, Van DG, Wishart DS (2009) *In silico* identification of genes in bacteriophage DNA. *Methods Mol Biol* 502:57–89
  45. Bailey TL, Elkan C (1995) The value of prior knowledge in discovering motifs with MEME. *ISMB* 3:21–29
  46. Wösten MM, Boeve M, Koot MG, van Nuenen AC, van der Zeijst BA (1998) Identification of *Campylobacter jejuni* promoter sequences. *J Bacteriol* 180:594–599
  47. Mitchell JE, Zheng D, Busby SJ, Minchin SD (2003) Identification and analysis of ‘extended-10’ promoters in *Escherichia coli*. *Nucl Acids Res* 31:4689–4695
  48. Nechaev S, Geiduschek EP (2008) Dissection of the bacteriophage T4 late promoter complex. *J Mol Biol* 379:402–413
  49. Geiduschek EP, Kassavetis GA (2010) Transcription of the T4 late genes. *Virology* 7:288
  50. Villegas A, Kropinski AM (2008) An analysis of initiation codon utilization in the domain bacteria—concerns about the quality of bacterial genome annotation. *Microbiology* 154:2559–2661
  51. Sandegren L, Nord D, Sjöberg BM (2005) SegH and Hef: two novel homing endonucleases whose genes replace the *mobC* and *mobE* genes in several T4-related phages. *Nucl Acids Res* 33:6203–6213
  52. Dereeper A, Guignon V, Blanc G, Audic S, Buffet S, Chevenet F, Dufayard JF, Guindon S, Lefort V, Lescot M, Claverie JM, Gascuel O (2008) Phylogeny.fr: robust phylogenetic analysis for the non-specialist. *Nucl Acids Res* 36:W465–W469
  53. Edgar RC (2004) MUSCLE: a multiple sequence alignment method with reduced time and space complexity. *BMC Bioinform* 5:113
  54. Castresana J (2000) Selection of conserved blocks from multiple alignments for their use in phylogenetic analysis. *Mol Biol Evol* 17:540–552
  55. Guindon S, Gascuel O (2003) A simple, fast, and accurate algorithm to estimate large phylogenies by maximum likelihood. *Syst Biol* 52:696–704
  56. Saleh L, Perler FB (2006) Protein splicing in cis and in trans. *Chem Rec* 6:183–193
  57. Kropinski AM, Arutyunov D, Foss M, Cunningham A, Ding W, Singh A, Pavlov AR, Henry M, Evoy S, Kelly J, Szymanski CM (2011) Genome and proteome of *Campylobacter jejuni* bacteriophage NCTC 12673. *Appl Environ Microbiol* 77:8265–8271
  58. Elleuche S, Poggeler S (2010) Inteins, valuable genetic elements in molecular biology and biotechnology. *Appl Microbiol Biotechnol* 87:479–489
  59. Dassa B, Amitai G, Caspi J, Schueler-Furman O, Pietrokovski S (2007) Trans protein splicing of cyanobacterial split inteins in endogenous and exogenous combinations. *Biochemistry* 46:322–330
  60. Buchinger E, Achmann FL, Aranko AS, Valla S, Skjak-Braek G, Iwai H, Wimmer R (2010) Use of protein trans-splicing to produce active and segmentally (2)H, (15)N labeled mannuronan C5-epimerase AlgE4. *Protein Sci* 19:1534–1543
  61. Coward C, Grant AJ, Swift C, Philp J, Towler R, Heydarian M, Frost JA, Maskell DJ (2006) Phase-variable surface structures are required for infection of *Campylobacter jejuni* by bacteriophages. *Appl Environ Microbiol* 72:4638–4647
  62. Sorensen MC, van Alphen LB, Harboe A, Li J, Christensen BB, Szymanski CM, Brøndsted L (2011) Bacteriophage F336 recognizes the capsular phosphoramidate modification of *Campylobacter jejuni* NCTC11168. *J Bacteriol* 193:6742–6749
  63. Holst Sørensen MC, van Alphen LB, Fodor C, Crowley SM, Christensen BB, Szymanski CM, Brøndsted L (2012) Phase variable expression of capsular polysaccharide modifications allows *Campylobacter jejuni* to avoid bacteriophage infection in chickens. *Front Cell Infect Microbiol* 2:11
  64. Zhilenkov EL, Popova VM, Popov DV, Zavalsky LY, Svetoch EA, Stern NJ, Seal BS (2006) The ability of flagellum-specific *Proteus vulgaris* bacteriophage PV22 to interact with *Campylobacter jejuni* flagella in culture. *Virology* 3:50
  65. Singh A, Arutyunov D, McDermott MT, Szymanski CM, Evoy S (2011) Specific detection of *Campylobacter jejuni* using the bacteriophage NCTC 12673 receptor binding protein as a probe. *Analyst* 136:4780–4786
  66. Lavigne R, Seto D, Mahadevan P, Ackermann H-W, Kropinski AM (2008) Unifying classical and molecular taxonomic classification: analysis of the *Podoviridae* using BLASTP-based tools. *Res Microbiol* 159:406–414
  67. Crooks GE, Hon G, Chandonia JM, Brenner SE (2004) Web-Logo: a sequence logo generator. *Genome Res* 14:1188–1190
  68. Carvalho C, Susano M, Fernandes E, Santos S, Gannon B, Nicolau A, Gibbs P, Teixeira P, Azeredo J (2010) Method for bacteriophage isolation against target *Campylobacter* strains. *Lett Appl Microbiol* 50:192–197
  69. Kropinski AM, Van den Bossche A, Lavigne R, Noben JP, Babiner P, Schmitt R (2012) Genome and proteome analysis of 7-7-1, a flagellotropic phage infecting *Agrobacterium* sp H13-3. *Virology* 9:102