



# The clinical course and outcomes of non-aneurysmal subarachnoid hemorrhages in a single-center retrospective study

Jeremias Tarkiainen<sup>1,2</sup> · Valtteri Hovi<sup>1,2</sup> · Liisa Pyysalo<sup>2,3</sup> · Antti Ronkainen<sup>1</sup> · Juhana Frösen<sup>1,2</sup>

Received: 9 May 2023 / Accepted: 17 August 2023 / Published online: 2 September 2023  
© The Author(s) 2023

## Abstract

**Background** Non-aneurysmal subarachnoid hemorrhages (SAHs) are thought to have a benign clinical course compared to aneurysmal SAHs. The aim of this study is to report the clinical course and outcomes of non-aneurysmal SAHs in a large single-center study.

**Methods** The patients with non-aneurysmal SAHs were screened from Tampere University Hospital from 2005 to 2020. The clinical data were collected from the patient's medical records and from the imaging studies. The primary interest was the neurological outcome assessed by dichotomized GOS at 2 months. Multivariable logistic regression was used to study the factors associated with unfavorable outcome.

**Results** We found 216 non-aneurysmal SAHs in 214 patients (2 patients with > 1 bleed). Ninety-seven percent of patients with a typical perimesencephalic bleeding pattern SAH (PSAH) (75/77) had a favorable outcome, while 86% of patients with non-perimesencephalic SAH (NPSAH) had a favorable outcome (84/98). In a multivariable logistic regression analysis, loss of consciousness (LOC) (aOR 214.67, 95% CI 17.62–2615.89) and Fisher grade 4 bleeding pattern (aOR 23.32, 95% CI 1.40–387.98) were associated with increased risk for unfavorable outcome (GOS 1–3). Vasospasm was seen in 20% of non-aneurysmal SAH patients, hydrocephalus in 17%, and 13% needed ventriculostomy.

**Conclusions** Non-aneurysmal SAH seems to have a good prognosis for majority of patients, especially for patients with a PSAH. Non-aneurysmal SAH patients are however affected by vasospasm and hydrocephalus and have similar risk factors for poor outcome as patients with aneurysmal SAH. This suggests that it is the severity of the bleed rather than the etiology that associates with poor outcome.

**Keywords** Non-aneurysmal subarachnoid hemorrhage · Loss of consciousness · Hydrocephalus · Vasospasm · Outcome

## Abbreviations

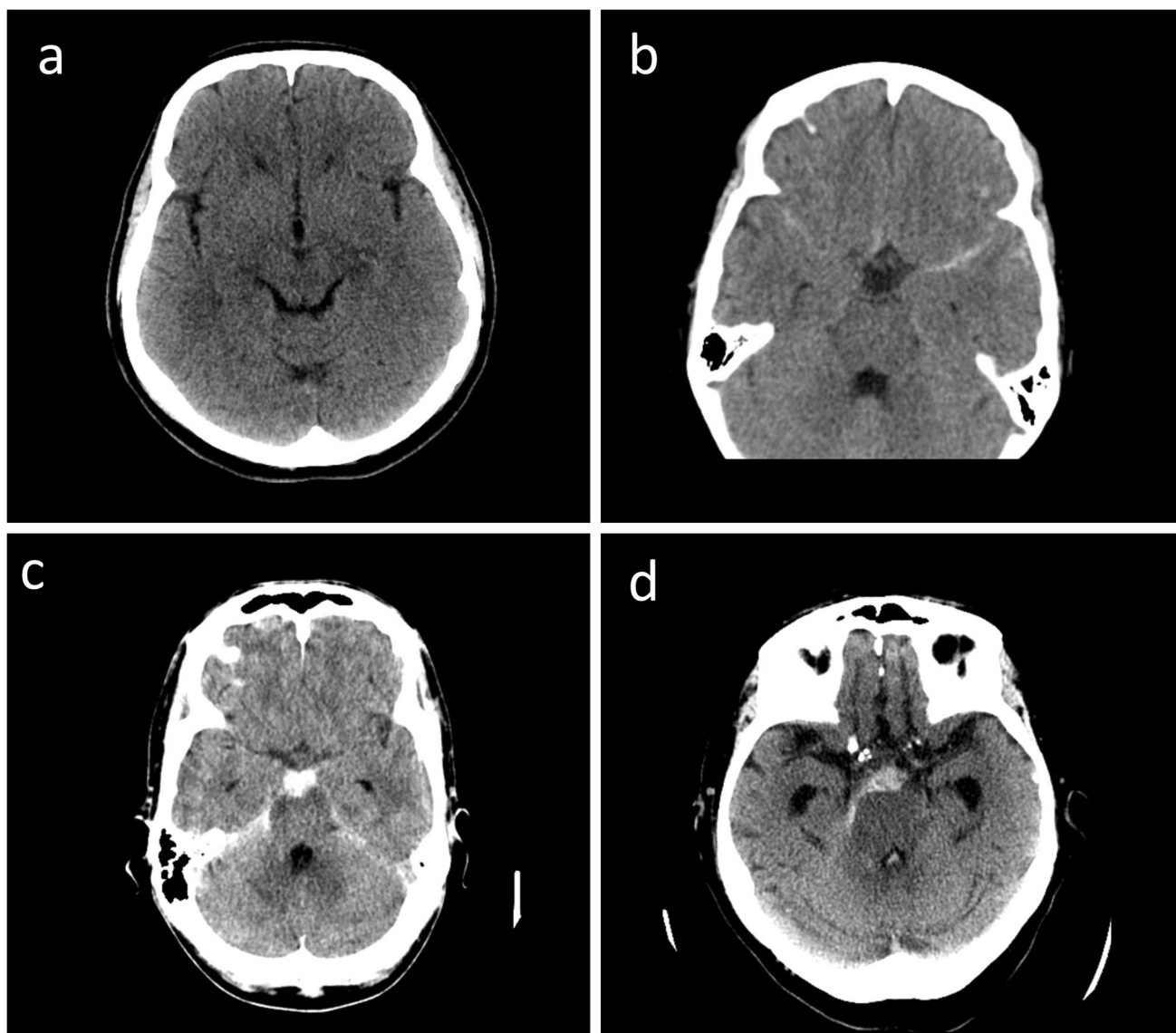
TAUH Tampere University Hospital  
SAH Subarachnoid hemorrhage

## Introduction

Spontaneous subarachnoid hemorrhage (SAH) accounts for 5% of strokes [5]. Unlike other types of strokes, SAH affects mainly working aged patients as the median age for SAH is around 55 years [20]. Thus, despite being a small proportion of strokes (5%) SAHs account for approximately 27% of all stroke-related life years lost [8]. Around 85% of SAH cases are related to the bleeding of an intracranial aneurysm. However, of the 15% SAH cases that are not related to aneurysms, the etiology for bleeding remains unknown for 10%. The remaining 5% are related to various rare conditions such as cerebral AVMs, arterial dissections, or dural arteriovenous fistulae [21]. The bleedings with an unknown etiology are usually classified as non-aneurysmal spontaneous subarachnoid hemorrhages (SAH) (Fig. 1), which can further be divided into perimesencephalic SAH (PSAH), in which the blood is centered anterior to the midbrain/pons

✉ Jeremias Tarkiainen  
jeremias.tarkiainen@tuni.fi

<sup>1</sup> Department of Neurosurgery, Tampere University Hospital and University of Tampere, Tampere, Finland  
<sup>2</sup> Hemorrhagic Brain Pathology Research Group, Faculty of Medical Technology and Health Sciences, Tampere University, Tampere, Finland  
<sup>3</sup> Department of Rehabilitation, Tampere University Hospital, Tampere, Finland



**Fig. 1** Non-aneurysmal SAHs with an unknown etiology. **a** Fisher grade 1 SAH. The diagnosis of SAH is based on lumbar puncture and **b** Fisher grade 2 SAH. **c** A typical non-aneurysmal SAH Fisher grade

3 SAH. **d** Fisher grade 4 non-aneurysmal SAH, the blood is also present in the fourth ventricle

area, and non-perimesencephalic SAH (NPSAH), in which the bleeding pattern is more diffuse [15].

It is thought that non-aneurysmal SAHs have a benign clinical course compared to aneurysmal SAHs (aSAH). Schuss et al. [16] studied outcomes of non-aneurysmal SAHs. They concluded that 87% of non-aneurysmal SAH patients recover with favorable outcome (mRS 0–2) [16]. However, they also reported that shunt dependency develops for 14% of patients, and the risk for shunt dependency is especially higher in patients with NPSAH (20% vs 5%). A similar study was conducted in Finland by Achren et al. [1]

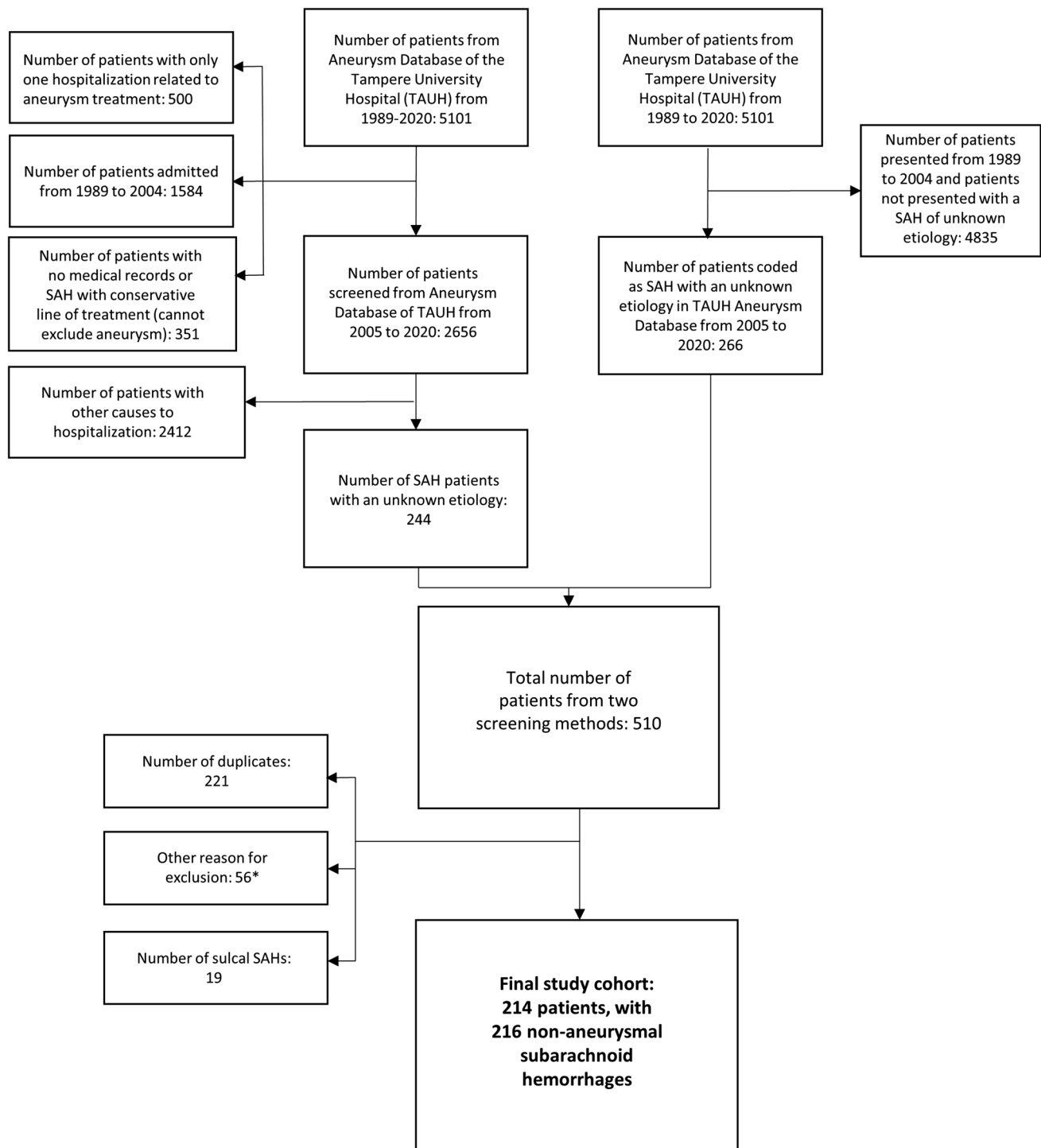
where they reported similar findings as 84% recovered with favorable outcome (GOS 4–5) and 17% of patients developed shunt dependency, suggesting that non-aneurysmal SAH patients also suffer from chronic post SAH complications despite the favorable outcome. As in the study by Schuss et al. [16], they found that patients with NPSAH were in increased risk to develop hydrocephalus and shunt dependency compared to patients with PSAH [1].

The aim of this study is to determine the clinical course and outcomes of non-aneurysmal SAH patients in a large single-center cohort study.

## Material and methods

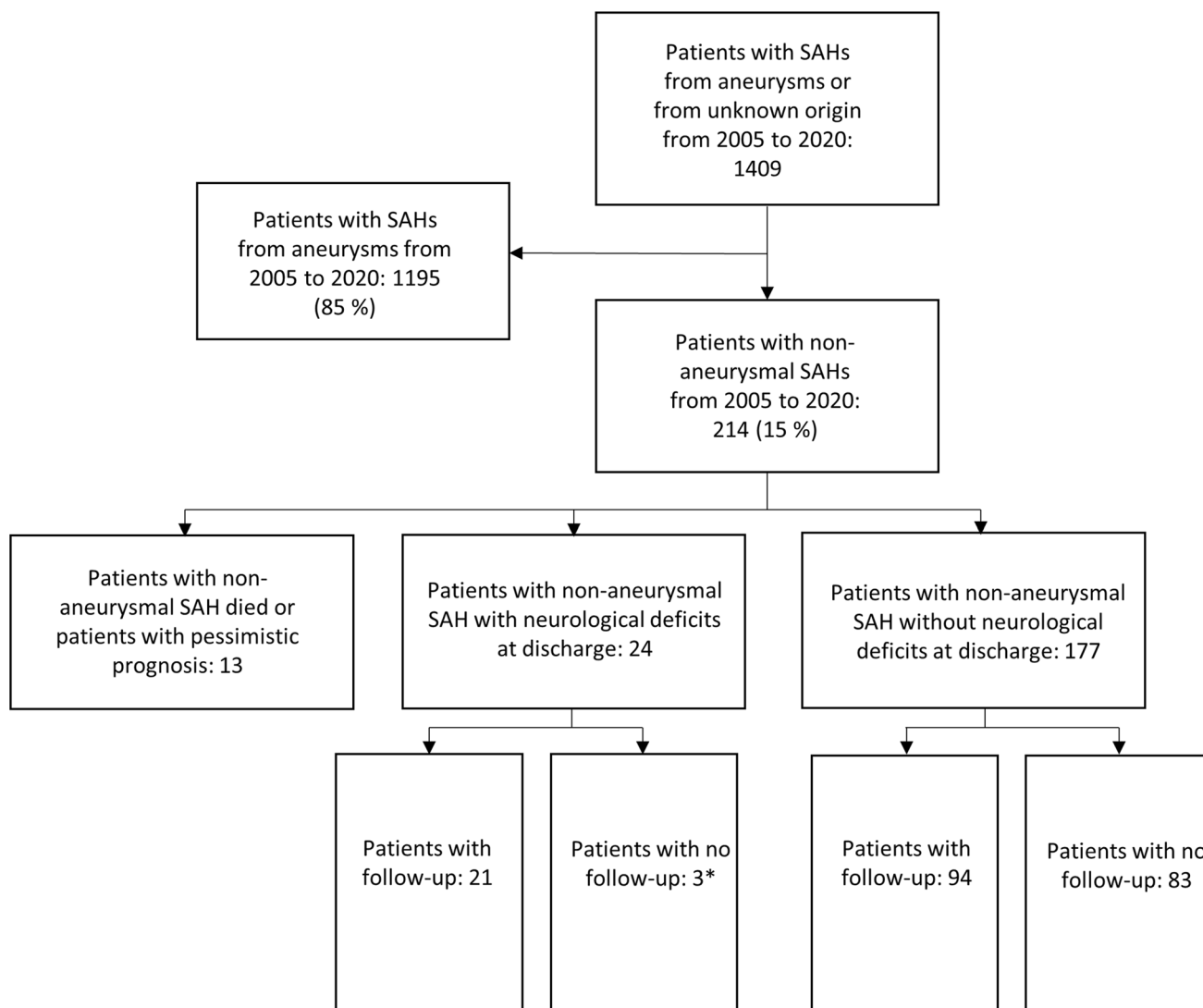
Tampere University Hospital (TAUH) is the only neurosurgical unit providing treatment for SAHs in its catchment area, making it the primary referral center for patients presented

with SAH. The TAUH aneurysm database is a single institution database into which all patients presented with SAH (ICD I60.1–9) or unruptured aneurysms (ICD I67.1) in its catchment area are entered from 1989 onwards. All patients with a potential non-aneurysmal SAH were identified and



**Fig. 2** A flowchart describing how the study cohort was formed. The cohort was formed by two screening methods in order to include all cases. As the two screening methods produced similar data, it also validates the comprehensiveness of the TAUH Aneurysm Database.

\*The group of patients with other reason for exclusion included patients of whom medical records were not available, patients with only native CT or patients of whom the bleeding source were eventually found, such as blister aneurysm or moyamoya disease



**Fig. 3** A flowchart describing how the follow-up was implemented. \*Out of 3 patients with neurological deficits at discharge, one of them was included in the analysis of outcome due to only minor neu-

rological deficits at discharge (GOS 5). Two patients were excluded from the outcome analysis as they were lost during follow-up with an uncertain condition

screened from 2005 to 2020 from the TAUH Aneurysm Database (Fig. 2). TAUH implemented the use of digital image archive in 2003–2004. Since 2005, the imaging studies and medical patient’s records are available constantly and therefore that was chosen as the starting point for this study. As the study is retrospective and the data was collected from the Aneurysm Database and from the patient’s medical records or the digitally archived imaging studies, the TAUH ethics committee waived the need for informed consent of the participating patients. This study was conducted according to the STROBE reporting guidelines (Data supplement).

In accordance with the European Union’s GDPR regulations, the data used in this study cannot be made freely available. Pseudonymized dataset can, however, be shared

after formal approval of a scientific research plan and data management plan by the local ethical review board and Tampere University Hospital.

### Data collection

The data was collected from the TAUH Aneurysm Database. In addition, the imaging studies and patient’s medical records were reviewed by a single author to ensure consistency of the data. Bleeding pattern, vasospasm, and the clinical and treatment-related data, such as age, sex, initial loss of consciousness (LOC), Glasgow Coma Scale (GCS) on site and on admission, World Federation of Neurosurgical Societies (WFNS) grade, Glasgow Outcome

Scale (GOS) at 2 months, hydrocephalus, or requirement of ventriculostomy or shunt were reviewed. GCS change was defined as GCS on site minus GCS on admission to the hospital. The distribution of bleed (PSAH vs NPSAH) was reviewed from the imaging studies. PSAH was defined as follows: (1) the blood is centered anterior to midbrain/pons area, (2) the bleed may extend into basal and suprasellar cisterns and into the proximal part of the Sylvian fissure, and (3) no overt intraventricular extension. Presence of hydrocephalus was determined according to the diagnosis made by the treating physicians on the medical records. Vasospasm was defined as radiological vasospasm detected in imaging studies. The primary interest was the neurological outcome. GOS was determined according to the latest neurological outcome of the patient recorded in the patient records by 2 months after the SAH. Follow-up visits were not routinely scheduled for some of the patients with mild non-aneurysmal SAHs that were discharged in good condition (46% of GOS 5 classified patients). For them, GOS at 2 months was categorized as 5 unless recorded otherwise in the patient records. Fifty-four percent (99/183) of GOS 5 classified patients had a scheduled follow-up. For those patients discharged with disability (GOS 4–2), the GOS was determined according to the neurological status at the latest follow-up visit by 2 months. Patients with uncertain outcome at 2 months were excluded from the analysis.

### Statistical analysis

Proportions and percentages were calculated for categorical variables and compared with chi-square test between groups. Medians and ranges were calculated for non-normally distributed continuous variables and compared between groups using the Mann–Whitney *U* test. Univariate logistic regression analysis was used to analyze the impact of patient and bleeding-related factors on the neurological outcome (dichotomized GOS), by calculating ORs and its corresponding 95% confidence intervals (CIs). In addition, a multivariate logistic regression model was used to identify factors independently associated with SAH outcome. Results from those analyses were reported as adjusted ORs (aORs) with 95% CIs. Significant variables associated with unfavorable outcome were included in the multivariate analysis. WFNS grade and the need for ventriculostomy were not included in the model to avoid multicollinearity with LOC and hydrocephalus. The data was analyzed using SPSS version 26.0 statistical software (IBM, Armonk, USA).

## Results

The screening process yielded 233 patients with 235 angiogram-negative SAHs (Fig. 2). When further analyzing the bleeding patterns of non-aneurysmal SAHs, 19/235 (8%) non-aneurysmal SAHs turned out to be sulcal SAHs, with a probable etiology of small vessel disease (SVD). These patients were excluded resulting in a total of 216 non-aneurysmal SAHs in 214 patients (two re-bleeds, incidence of re-bleed 0.9%). The GOS at 2 months could be determined for 128 patients. Eighty-four patients left the hospital with a good neurological state, and thus, routine follow-up was not scheduled for these patients. Final analysis of outcome included 212 patients. Two patients were excluded as they did not have follow-up and they left hospital with an uncertain neurological condition (Fig. 3).

### Patient characteristics of non-aneurysmal SAH patients and characteristics according to outcome

The median age for bleeding was 55 years and 51% were female (Table 1). Most of the patients had a GCS of 15 on admission to hospital, and the mean of GCS change (on site on admission) was 0.2. Fisher grade 3 was the most common type of bleeding pattern (51%). A total of 16 patients (7.5%) had an unfavorable outcome (GOS 1–3). The median time for GOS assessment was 66 days (IQR 41–114). For patients with no follow-up due to good neurological state, the median time from bleeding to last day at hospital was 8 days. Eighty-one percent of patients with an unfavorable outcome had a LOC while only 3% of patients with favorable outcome had LOC. Low GCS score, high WFNS grade bleed, LOC, hydrocephalus, ventriculostomy, and Fisher grade were significantly associated with unfavorable outcome. The positive predictive value (PPV) for unfavorable outcome was 68% (13/19) for LOC and 9% (16/170) for Fisher grades 3 and 4. Almost all the bleeding patterns of unfavorable outcome patients were Fisher grade 4 (14/16). Of Fisher grades 1 and 2, none of the patients had an unfavorable outcome. Positive predictive value for favorable outcome was 100% (42/42) for Fisher grade 1 and 2 bleeding patterns.

### Patient characteristics according to the bleeding pattern

Forty-four percent (77/177) of patients with visible SAH had a typical PSAH bleeding pattern, while 56% of patients had more diffuse NPSAH bleeding pattern (Table 2). Seventeen percent of patients had a Fisher grade 1 SAH, with no visible blood in the subarachnoid space in a CT study. Thus, they were excluded from the analysis between PSAH and NPSAH. Patients with NPSAH had more frequently unfavorable

**Table 1** The characteristics of all non-aneurysmal SAH patients and characteristics of non-aneurysmal SAHs with favorable and unfavorable outcomes

|                       | All non-aneurysmal SAH patients (N=214) | Favorable outcome (N=196) | Unfavorable outcome (N=16) | P value |
|-----------------------|---|---------------------------|----------------------------|---------|
| Age, median (range)   | 55 (14–88)                              | 55 (14–88)                | 59.5 (38–85)               | 0.215   |
| Female                | 50.9% (109/214)                         | 51.9% (100/196)           | 56.3% (9/16)               | 0.687   |
| Loss of consciousness | 8.9% (19/214)                           | 3.1% (6/196)              | 81.3% (13/16)              | <0.001  |
| GCS score             |   |                           |                            |         |
| 15                    | 81.8% (175/214)                         | 88.3% (173/196)           | 6.3% (1/16)                | <0.001  |
| 13–14                 | 8.9% (19/214)                           | 9.2% (18/196)             | 6.3% (1/16)                |         |
| 7–12                  | 4.2% (9/214)                            | 2.0% (4/196)              | 25.0% (4/16)               |         |
| <7                    | 5.1% (11/214)                           | 0.5% (1/196)              | 62.5% (10/16)              |         |
| Change in GCS (mean)  | 0.20                                    | 0.15                      | 0.69                       | 0.058   |
| WFNS 4–5              | 9.3% (20/214)                           | 2.6% (5/196)              | 87.5% (14/16)              | <0.001  |
| WFNS 1–3              | 90.7% (194/214)                         | 97.4% (191/196)           | 12.5% (2/16)               | <0.001  |
| WFNS 1–3 but also LOC | 2.8% (6/214)                            | 2.6% (5/196)              | 6.3% (1/16)                | 0.391   |
| Fisher grade          |   |                           |                            |         |
| 1                     | 17.3% (37/214)                          | 18.9% (37/196)            | 0.0% (0/16)                | <0.001  |
| 2                     | 2.3% (5/214)                            | 2.6% (5/196)              | 0.0% (0/16)                |         |
| 3                     | 50.5% (108/214)                         | 53.6% (105/196)           | 12.5% (2/16)               |         |
| 4                     | 29.9% (64/214)                          | 25.0% (49/196)            | 87.5% (14/16)              |         |
| Vasospasm             | 20.1% (43/214)                          | 18.9% (37/196)            | 37.5% (6/16)               | 0.075   |
| Hydrocephalus         | 16.8% (36/214)                          | 11.7% (23/196)            | 75.0% (12/16)              | <0.001  |
| Ventriculostomy       | 12.6% (27/214)                          | 9.2% (18/196)             | 56.3% (9/16)               | <0.001  |
| Spinal drainage       | 1.9% (4/214)                            | 1.5% (3/196)              | 0.0% (0/16)                | 0.618   |
| CSF shunt             | 3.7% (8/214)                            | 3.6% (7/196)              | 6.3% (1/16)                | 0.589   |

outcome (14% vs 3%). The patients with NPSAH were older (57 vs 51 years old), had more frequently LOC at onset (14% vs 3%), had lower GCS score on admission, and had more often high WFNS and Fisher grade bleeds. The patients with NPSAH also developed more frequently hydrocephalus (30% vs 8%) and the need for ventriculostomy (22% vs 7%).

### Performed angiograms

A total of 649 angiograms was performed on 214 patients. Repeated angiograms were performed to exclude aneurysms or other sources of bleeding. Of all angiograms, 37.3% were CTA, 45.0% DSA, and 17.7% MRA. The median number of angiograms per patient was 3 (IQR 2–4). 93.5% of patients had at least 2 angiograms and 71.5% of patients had 3 or more angiograms. 89.7% of patients underwent at least one DSA study, and 49.1% of patients underwent at least one MRA study.

### Impact of vasospasm and ventriculostomy-dependent hydrocephalus on the neurological outcome of non-aneurysmal SAH patients

We found vasospasm in 20% of patients (43/214) and the need for ventriculostomy in 13% of patients (27/214) (Table 3). Both groups had worse outcomes compared

to the patients without vasospasm or the need for ventriculostomy. Fourteen percent of patients with vasospasm and 33.3% of ventriculostomy patients had an unfavorable outcome compared to the reference groups (5.9 and 3.8%). In addition, these patient groups had more frequent LOC, 14% vs 8% ( $P = 0.186$ ) for vasospasm patients and 30% vs 6% ( $P = <0.001$ ) for patients with the need for ventriculostomy.

### Logistic regression analysis

A total of 212 patients were included in the logistic regression analysis (Table 4) to analyze predictors of poor functional outcome (GOS 1–3). In a univariate analysis, LOC (OR 137.22, 95% CI 30.76–612.21), WFNS grade of 4–5 (OR 267.40, 95% CI 47.54–1504.23), Fisher grade 4 (OR 21.00, 95% CI 4.61–95.68), hydrocephalus (OR 22.57, 95% CI 6.71–75.85), and ventriculostomy (OR 12.71, 95% CI 4.23–38.21) were associated with increased risk of unfavorable outcome. In a multivariate analysis, LOC (aOR 214.67, 95% CI 17.62–2615.89) and Fisher grade 4 (aOR 23.32, 95% CI 1.40–387.98) were significantly associated with poor functional outcome. WFNS grade of 4–5 was not included in the multivariate analysis to avoid multicollinearity (65% of patients with WFNS grade of 4 to 5 had LOC and 68% of patients with LOC had WFNS grade of 4 to 5).

**Table 2** Patient characteristics and treatment-related variables for patients with perimesencephalic SAH (PSAH) and patients with diffuse pattern non-perimesencephalic SAH (NPSAH)

|                       | All PSAHs (N = 77) | All NPSAHs (N = 100) | P value |
|-----------------------|--------------------|----------------------|---------|
| Age, median (range)   | 51 (28–85)         | 57 (20–88)           | 0.020   |
| Female                | 54.5% (42/77)      | 48.0% (48/100)       | 0.388   |
| Loss of consciousness | 2.6% (2/77)        | 14.0% (14/100)       | 0.009   |
| Favorable outcome     | 97.4% (75/77)      | 85.7% (84/98)        | 0.008   |
| Re-bleed              | 0.0% (0/77)        | 2.0% (2/100)         | 0.212   |
| GCS score             |                    |                      |         |
| 15                    | 90.9% (70/77)      | 69.0% (69/100)       | <0.001  |
| 13–14                 | 7.8% (6/77)        | 13.0% (13/100)       |         |
| 7–12                  | 0.0% (0/77)        | 8.0% (8/100)         |         |
| <7                    | 1.3% (1/77)        | 10.0% (10/100)       |         |
| Change in GCS (mean)  | 0.29               | 0.18                 | 0.424   |
| WFNS 4–5              | 1.3% (1/77)        | 18.0% (18/100)       | <0.001  |
| Fisher grade          |                    |                      |         |
| 1                     | –                  | –                    |         |
| 2                     | 2.6% (2/77)        | 3.0% (3/100)         | <0.001  |
| 3                     | 76.6% (59/77)      | 49.0% (49/100)       |         |
| 4                     | 20.8% (16/77)      | 48.0% (48/100)       |         |
| Vasospasm             | 16.9% (13/77)      | 27.0% (27/100)       | 0.111   |
| Hydrocephalus         | 7.8% (6/77)        | 30.0% (30/100)       | <0.001  |
| Ventriculostomy       | 6.5% (5/77)        | 22.0% (22/100)       | 0.004   |
| Spinal drainage       | 0.0% (0/77)        | 4.0% (4/100)         | 0.076   |
| CSF shunt             | 2.6% (2/77)        | 6.0% (6/100)         | 0.280   |

**Table 3** The impact of vasospasm and ventriculostomy on neurological outcome

|   | No vasospasm ( <i>N</i> =171) | Vasospasm ( <i>N</i> =43) | No ventriculostomy ( <i>N</i> =187) | Ventriculostomy ( <i>N</i> =27) |
|---|-------------------------------|---------------------------|-------------------------------------|---------------------------------|
| Poor neurological outcome (GOS 1–3 at 2 months) | 5.9% (10/169)                 | 14.0% (6/43)              | 3.8% (7/185)                        | 33.3% (9/27)                    |
| WFNS grade of 4–5 on admission                  | 6.4% (11/171)                 | 20.9% (9/43)              | 4.3% (8/187)                        | 44.4% (12/27)                   |
| WFNS grade of 1–3 on admission                  | 93.5% (160/171)               | 79.1% (34/43)             | 95.7% (179/187)                     | 55.6% (15/27)                   |
| GCS 15 on admission                             | 82.3% (144/171)               | 72.1% (31/43)             | 88.2% (165/187)                     | 37.0% (10/27)                   |
| Loss of consciousness                           | 7.6% (13/171)                 | 14.0% (6/43)              | 5.9% (11/187)                       | 29.6% (8/27)                    |

## Discussion

We studied the clinical course and outcomes in 214 non-aneurysmal SAH patients, which is one of the largest cohorts of non-aneurysmal SAHs. Out of the 214 non-aneurysmal SAHs, we found that 2 patients had a re-bleed, totaling a re-bleed rate of 0.9%. Ninety-two percent of the patients had a favorable outcome. The patients with a NPSAH type of bleeding pattern had more frequently unfavorable outcome compared to patients with PSAH (16% vs 3%). In a multivariate analysis, the predictors for poor outcome were the LOC and the need for ventriculostomy, i.e., hydrocephalus on admission.

### Loss of consciousness as a strong predictor of poor outcome after non-aneurysmal SAH

In the multivariable logistic regression analysis, LOC was by far the most significant indicator of unfavorable outcome (aOR 137.94, 95% CI 30.92–615.41), regardless of the other factors. In addition, the positive predictive value for unfavorable outcome was 68% for all non-aneurysmal SAHs and 86% for NPSAHs, making LOC a clear clinical indicator of high risk for poor outcome. The significance of LOC could be explained by the fact that LOC is thought to be the result of early brain injury [18]. During a severe SAH, the leakage of blood causes a momentary increase in ICP and as the ICP rises, the cerebral perfusion pressure of the intracranial circulation may be not enough to guarantee the oxygen supply to the brain tissue resulting in a transient global ischemia. The lack of LOC in patients with PSAH (2/77) supports the idea that the source of PSAH is from other than arterial source, for example of venous origin around the midbrain [4, 7], as the bleed from venous origin does not cause such a momentary increase in ICP. In aneurysmal SAH, LOC is known to be a marker for early brain injury, and it is associated with 2.8-fold increase in the risk of unfavorable outcome [18]. Based on previous literature

in aneurysmal SAHs [18, 19, 22] and our findings, it seems that regardless of the etiology of the bleed, LOC at onset is associated with early brain injury and furthermore with unfavorable outcome.

Since the level of consciousness is a major determinant for the WFNS grade, as well as for the other grading systems used to predict the outcome of SAH patients, LOC during ictus was highly associated with a high WFNS grade. We chose to focus on LOC rather than WFNS grade, since it seemed more sensitive than WFNS grading. Even though WFNS score is known to predict unfavorable outcome [17], some patients with a good WFNS score can have a poor outcome. The added value of using LOC as a clinical factor when estimating the risk of complications and poor outcome after a non-aneurysmal SAH in comparison to using traditional parameters such as Hunt and Hess, GCS, or WFNS grading is that presence and length of LOC can be used to stratify those patients who present in a good condition on admission (i.e., high GCS or good WFNS score) into those who nevertheless have high risk and those who do not. It is especially the patients who present with a good WFNS score (WFNS 1 to 3) for which additional risk stratification is needed (Table 1).

### Perimesencephalic vs non-perimesencephalic bleeding patterns

We found that the great majority of patients with unfavorable outcome had a NPSAH type of bleeding pattern (88%, 14/16). A recent study suggests that patients with PSAH have good prognosis, whereas patients with NPSAH are thought to have intermediate risk for complications that are often present in patients with aneurysmal SAH [2]. Our results support the idea that NPSAHs have intermediate clinical course: we found that 30% of patients with NPSAH developed hydrocephalus and 22% need ventriculostomy, which are higher rates reported to be associated with PSAH but lower than aneurysmal SAHs [3]. Although patients with NPSAH experience



**Table 4** Univariate and multivariate logistic regression analysis on the risk factors for unfavorable outcome. WFNS grade of 4 to 5 and the need for ventriculostomy were not included in the multivariate analysis to avoid collinearity with LOC and hydrocephalus. Fisher grades 1–3 were used as reference value

|                        | OR and its 95% CI      | P value | aOR and its 95% CI     | P value |
|------------------------|------------------------|---------|------------------------|---------|
| Age                    | 1.04 (0.99–1.08)       | 0.120   | 1.09 (1.00–1.18)       | 0.053   |
| Female gender          | 1.23 (0.44–3.45)       | 0.688   | 1.67 (0.23–12.19)      | 0.612   |
| Loss of consciousness  | 1.37,22 (30.76–612.21) | <0.001  | 214.23 (17.58–2610.61) | <0.001  |
| WFNS 4–5               | 267.40 (47.54–1504.23) | <0.001  | –                      | –       |
| Radiological vasospasm | 2.58 (0.88–7.54)       | 0.084   | 4.05 (0.54–30.42)      | 0.174   |
| Fisher grade 4         | 21.00 (4.61–95.68)     | <0.001  | 23.24 (1.39–387.56)    | 0.028   |
| Hydrocephalus          | 22.57 (6.71–75.85)     | <0.001  | 2.89 (0.40–20.91)      | 0.293   |
| Ventriculostomy        | 12.71 (4.23–38.21)     | <0.001  | –                      | –       |
| Shunt dependency       | 1.80 (0.21–15.61)      | 0.594   | –                      | –       |

more often complications, still relatively large proportion of patients have a favorable prognosis (Table 2).

### Risk of vasospasm after non-aneurysmal hemorrhage is not negligible

Traditionally, it has been thought that non-aneurysmal SAHs are not associated with a significant risk of vasospasm. As in the aneurysmal SAHs [6], it is known that the greater amount of blood (Fisher 3 and 4) is associated with increased risk for vasospasm [11]. Previous studies have found that non-aneurysmal SAHs are associated with a 16–21% [1, 11, 12] risk of vasospasm. A similar risk for vasospasm was observed in our data (20%). For Fisher grades 1 and 2, vasospasm was seen in 8% (3/37) and 20% (1/5) of patients, respectively. However, 24% (26/108) of Fisher grade 3 and 20% (13/64) of Fisher grade 4 bleeding pattern patients had radiological vasospasm. Our results support the idea that the amount of leakage and the severity of the leakage are important for the development of vasospasm [13]. Vasospasm was more often seen in patients with LOC (32%) and in patients with Fisher 3 or 4 bleeding patterns compared to Fisher 1 and 2 bleeding patterns (23% vs 10%). Therefore, it seems that especially Fisher 3 and 4 graded non-aneurysmal SAHs should be treated according to the same protocol as the patients with aneurysmal SAHs to avoid vasospasm-induced complications.

### Hydrocephaly after non-aneurysmal hemorrhage

In our study, we found that risk for hydrocephalus was 17% and the risk for shunting 4%. Previous literature has suggested similar risk for hydrocephalus with rates varying from 16 to 30% [1, 9, 10]. However, the rate of shunting was substantially lower compared to previous findings by Schuss et al. (14%) [16] and Achrén et al. (17%) [1]. The difference between shunt rate of our cohort and the shunt rate of Achrén et al. was statistically significant (4% vs 17%,  $P = <0.001$ ). It was an interesting finding, as the study setting by Achrén et al. in Finland is very similar to ours. The difference may be due to the fact that our study data also includes patients who were discharged from hospital with good neurological condition without structured follow-up and our study cohort included more patients with Fisher grade 1 bleeding pattern. In the study by Achrén et al., only patients with follow-up were included. We chose to include this patient group to avoid overestimating the risk of non-aneurysmal SAH-related complications.

### Strengths and limitations of the study

A strength of this study is the fact that, in Finland, all neurosurgical care of SAHs is centered in university hospitals, of which catchment areas are defined by the Finnish Government.

Thus, all non-aneurysmal SAHs of our catchment area are first presented to TAUH making our study cohort comprehensive.

This study has some limitations that need to be addressed. Firstly, all patients did not have routine follow-up (39% of patients). This may introduce bias by underestimating the complications that manifest late after the onset of non-aneurysmal SAH. In a previous long-term follow-up study conducted at TAUH, however, no delayed mortality was observed as a result of non-aneurysmal SAH [14]. In addition, these patients had good neurological condition at the end of hospital stay (GOS 5), and thus, the clinical decision was that routine follow-up is not needed. Moreover, these patients are instructed to seek medical care if they have complications that manifest after discharge from hospital. Thus, it is reasonable to expect that these patients would have sought care from TAUH if they would have developed symptoms. Nonetheless, especially mild cognitive deficits or other neuropsychological symptoms might pass undiagnosed since routine neuropsychological testing after non-aneurysmal SAH has not been the clinical practice. Considering that the severity of the bleed appears to have a greater impact on the outcome of SAH, rather than the etiology of the bleed, we suggest that routine neuropsychological testing should be done for non-aneurysmal SAH patients in the future, especially for patients who present with more severe clinical course similar to aneurysmal SAH.

Secondly, patients with mild non-aneurysmal SAHs may never seek medical care, and thus, our reported rates of complications may overestimate the risk of non-aneurysmal SAH. Nevertheless, our data demonstrate that at least in more severe non-aneurysmal SAH serious complications may occur.

Third, in spite of our cohort of non-aneurysmal SAH patients being among the largest ones published, the number of serious end events was relatively low. This predisposes to unreasonably high ORs and confidence intervals in the multivariate models. While the ORs should be interpreted with caution, they do nevertheless clearly demonstrate that LOC, NPSAH, and Fisher 4 grade bleed are risk factors for poor outcome after non-aneurysmal SAH.

## Conclusions

As studied previously, most non-aneurysmal SAHs seem to have a benign clinical course, with little risk of re-bleed (0.9%). However, 8% of non-aneurysmal SAHs result in an unfavorable outcome, most of them being NPSAHs (88%). Bleeding pattern resembling aneurysmal SAH and LOC during ictus are factors that characterize patients with unfavorable outcome after non-aneurysmal SAH. Thus, while non-aneurysmal SAH is benign for most patients, it is important to provide

intensive neurosurgical monitoring to patients who have a NPSAH bleeding pattern or have lost consciousness during the bleed.

**Supplementary Information** The online version contains supplementary material available at <https://doi.org/10.1007/s00701-023-05767-4>.

**Acknowledgements** We wish to thank Ms. Anne Simi, R.N., for her dedication to maintain the TAUH Aneurysm Database.

**Author contribution** Conceptualization: Juhana Frösen, Jeremias Tarkiainen; methodology: Juhana Frösen, Jeremias Tarkiainen; data collection: Jeremias Tarkiainen, Antti Ronkainen, Liisa Pyysalo; data analysis and interpretation: Juhana Frösen, Jeremias Tarkiainen; writing—original draft preparation: Jeremias Tarkiainen, Valtteri Hovi; writing—review and editing: Juhana Frösen, Antti Ronkainen, Liisa Pyysalo. All authors reviewed and edited the manuscript and approved the final version of the manuscript.

**Funding** Open access funding provided by Tampere University including Tampere University Hospital, Tampere University of Applied Sciences (TUNI). This study was funded by the research grants of Tampere University Hospital (VTR).

**Data availability** In accordance with the European Union's GDPR regulations, the data used in this study cannot be made freely available. Pseudonymized dataset can, however, be shared after formal approval of a scientific research plan and data management plan by the local ethical review board and Tampere University Hospital.

**Code availability** Not applicable.

## Declarations

**Ethics approval** This study received formal approval and research permission by the administration of TAUH (R10515).

**Consent for publication** Due to the retrospective nature of our study, the TAUH ethics committee waived the need for informed consent of the participating patients.

**Competing interests** The authors declare no competing interests.

**Open Access** This article is licensed under a Creative Commons Attribution 4.0 International License, which permits use, sharing, adaptation, distribution and reproduction in any medium or format, as long as you give appropriate credit to the original author(s) and the source, provide a link to the Creative Commons licence, and indicate if changes were made. The images or other third party material in this article are included in the article's Creative Commons licence, unless indicated otherwise in a credit line to the material. If material is not included in the article's Creative Commons licence and your intended use is not permitted by statutory regulation or exceeds the permitted use, you will need to obtain permission directly from the copyright holder. To view a copy of this licence, visit <http://creativecommons.org/licenses/by/4.0/>.

## References

1. Achrén A, Raj R, Siironen J, Laakso A, Marjamaa J (2022) Spontaneous angiogram-negative subarachnoid hemorrhage: a

- retrospective single center cohort study. *Acta Neurochir (Wien)* 164(1):129–140. <https://doi.org/10.1007/s00701-021-05069-7>
2. Akbik F, Pimentel-Farias C, Press DA, Foster NE, Luu K, Williams MG, Andea SG, Kyei RK, Wetsel GM, Grossberg JA, Howard BM, Tong F, Cawley CM, Samuels OB, Sadan O (2022) Diffuse angiogram-negative subarachnoid hemorrhage is associated with an intermediate clinical course. *Neurocrit Care* 36(3):1002–1010. <https://doi.org/10.1007/s12028-021-01413-y>
  3. Angermann M, Jablawi F, Angermann M, Conzen-Dilger C, Schubert GA, Höllig A, Veldeman M, Reich A, Hasan D, Ridwan H, Clusmann H, Wiesmann M, Nikoubashman O (2022) Clinical outcome and prognostic factors of patients with perimesencephalic and nonperimesencephalic subarachnoid hemorrhage. *World Neurosurg* 165:e512–e519. <https://doi.org/10.1016/j.wneu.2022.06.086>
  4. Buyukkaya R, Yıldırım N, Cebeci H, Kocaeli H, Dusak A, Ocakoğlu G, Erdoğan C, Hakyemez B (2014) The relationship between perimesencephalic subarachnoid hemorrhage and deep venous system drainage pattern and calibrations. *Clin Imaging* 38(3):226–30. <https://doi.org/10.1016/j.clinimag.2014.01.003>
  5. Feigin VL, Lawes CM, Bennett DA, Barker-Collo SL, Parag V (2009) Worldwide stroke incidence and early case fatality reported in 56 population-based studies: a systematic review. *Lancet Neurol* 8(4):355–369. [https://doi.org/10.1016/S1474-4422\(09\)70025-0](https://doi.org/10.1016/S1474-4422(09)70025-0)
  6. Fisher CM, Kistler JP, Davis JM (1980) Relation of cerebral vasospasm to subarachnoid hemorrhage visualized by computerized tomographic scanning. *Neurosurgery* 6(1):1–9. <https://doi.org/10.1227/00006123-198001000-00001>
  7. Hafez A, Numminen J, Rahul R, Järveläinen J, Niemelä M (2016) Perimesencephalic subarachnoid hemorrhage with a positive angiographic finding: case report and review of the literature. *Acta Neurochir (Wien)* 158(6):1045–1049. <https://doi.org/10.1007/s00701-016-2801-9>
  8. Johnston SC, Selvin S, Gress DR (1998) The burden, trends, and demographics of mortality from subarachnoid hemorrhage. *Neurology* 50(5):1413–1418. <https://doi.org/10.1212/wnl.50.5.1413>
  9. Kang P, Raya A, Zipfel GJ, Dhar R (2016) Factors associated with acute and chronic hydrocephalus in nonaneurysmal subarachnoid hemorrhage. *Neurocrit Care* 24(1):104–109. <https://doi.org/10.1007/s12028-015-0152-7>
  10. Khan AA, Smith JD, Kirkman MA, Robertson FJ, Wong K, Dott C, Grieve JP, Watkins LD, Kitchen ND (2013) Angiogram negative subarachnoid haemorrhage: outcomes and the role of repeat angiography. *Clin Neurol Neurosurg* 115(8):1470–1475. <https://doi.org/10.1016/j.clineuro.2013.02.002>
  11. Konczalla J, Kashefiolasi S, Brawanski N, Lescher S, Senft C, Platz J, Seifert V (2016) Cerebral vasospasm and delayed cerebral infarctions in 225 patients with non-aneurysmal subarachnoid hemorrhage: the underestimated risk of Fisher 3 blood distribution. *J Neurointerv Surg* 8(12):1247–1252. <https://doi.org/10.1136/neurintsurg-2015-012153>
  12. Lee SU, Hong EP, Kim BJ, Kim S-E, Jeon JP (2018) Delayed cerebral ischemia and vasospasm after spontaneous angiogram-negative subarachnoid hemorrhage: an updated meta-analysis. *World Neurosurg* 115:e558–e569
  13. Macdonald RL, Weir BK (1991) A review of hemoglobin and the pathogenesis of cerebral vasospasm. *Stroke* 22(8):971–982. <https://doi.org/10.1161/01.str.22.8.971>
  14. Pyysalo LM, Niskakangas TT, Keski-Nisula LH, Kähärä VJ, Öhman JE (2011) Long term outcome after subarachnoid haemorrhage of unknown aetiology. *J Neurol Neurosurg Psychiatry* 82(11):1264–1266. <https://doi.org/10.1136/jnnp.2010.239335>
  15. Rinkel GJ, Wijdicks EF, Hasan D, Kienstra GE, Franke CL, Hageman LM, Vermeulen M, van Gijn J (1991) Outcome in patients with subarachnoid hemorrhage and negative angiography according to pattern of haemorrhage on computed tomography. *Lancet* 338(8773):964–968. [https://doi.org/10.1016/0140-6736\(91\)91836-j](https://doi.org/10.1016/0140-6736(91)91836-j)
  16. Schuss P, Hadjiathanasiou A, Brandecker S, Wispel C, Borger V, Güresir Á, Vatter H, Güresir E (2019) Risk factors for shunt dependency in patients suffering from spontaneous, non-aneurysmal subarachnoid hemorrhage. *Neurosurg Rev* 42(1):139–145. <https://doi.org/10.1007/s10143-018-0970-0>
  17. St Julien J, Bandeen-Roche K, Tamargo RJ (2008) Validation of an aneurysmal subarachnoid hemorrhage grading scale in 1532 consecutive patients. *Neurosurgery* 63(2):204–10; discussion 210–1. <https://doi.org/10.1227/01.NEU.0000316857.80632.9A>
  18. Suwatcharangkoon S, Meyers E, Falo C, Schmidt JM, Agarwal S, Claassen J, Mayer SA (2016) Loss of consciousness at onset of subarachnoid hemorrhage as an important marker of early brain injury. *JAMA Neurol* 73(1):28–35. <https://doi.org/10.1001/jamaneurol.2015.3188>
  19. Takahashi S, Akiyama T, Horiguchi T, Miwa T, Takemura R, Yoshida K (2020) Loss of consciousness at ictus and/or poor World Federation of Neurosurgical Societies grade on admission reflects the impact of EBI and predicts poor outcome in patients with SAH. *Surg Neurol Int.* 11:40. [https://doi.org/10.25259/SNI\\_551\\_2019](https://doi.org/10.25259/SNI_551_2019)
  20. Tarkiainen J, Kelahaara M, Pyysalo L, Ronkainen A, Frösen J (2022) Size at which aneurysms rupture: a hospital-based retrospective cohort from 3 decades. *Stroke Vasc Interv Neurol* 1–9. <https://doi.org/10.1161/svin.121.000193>
  21. van Gijn J, Rinkel GJ (2001) Subarachnoid haemorrhage: diagnosis, causes and management. *Brain* 124(Pt 2):249–278. <https://doi.org/10.1093/brain/124.2.249>
  22. Wang J, Alotaibi NM, Akbar MA, Ayling OG, Ibrahim GM, Macdonald RL, SAHIT collaborators (2017) Loss of consciousness at onset of aneurysmal subarachnoid hemorrhage is associated with functional outcomes in good-grade patients. *World Neurosurg* 98:308–313. <https://doi.org/10.1016/j.wneu.2016.10.099>

**Publisher's Note** Springer Nature remains neutral with regard to jurisdictional claims in published maps and institutional affiliations.