



A case series study of augmented reality in laparoscopic liver resection with a deformable preoperative model

Le Roy Bertrand^{1,2,4} · Mourad Abdallah^{1,2} · Yamid Espinel¹ · Lilian Calvet¹ · Bruno Pereira³ · Erol Ozgur¹ · Denis Pezet^{1,2} · Emmanuel Buc^{1,2} · Adrien Bartoli¹

Received: 13 April 2020 / Accepted: 10 July 2020 / Published online: 20 July 2020
© Springer Science+Business Media, LLC, part of Springer Nature 2020

Abstract

Background Previous work in augmented reality (AR) guidance in monocular laparoscopic hepatectomy requires the surgeon to manually overlay a rigid preoperative model onto a laparoscopy image. This may be fairly inaccurate because of significant liver deformation. We have proposed a technique which overlays a *deformable* preoperative model semi-automatically onto a laparoscopic image using a new software called *Hepataug*. The aim of this study is to show the feasibility of *Hepataug* to perform AR with a deformable model in laparoscopic hepatectomy.

Methods We ran *Hepataug* during the procedures, as well as the usual means of laparoscopic ultrasonography (LUS) and visual inspection of the preoperative CT or MRI. The primary objective was to assess the feasibility of *Hepataug*, in terms of minimal disruption of the surgical workflow. The secondary objective was to assess the potential benefit of *Hepataug*, by subjective comparison with LUS.

Results From July 2017 to March 2019, 17 consecutive patients were included in this study. AR was feasible in all procedures, with good correlation with LUS. However, for 2 patients, LUS did not reveal the location of the tumors. *Hepataug* gave a prediction of the tumor locations, which was confirmed and refined by careful inspection of the preoperative CT or MRI.

Conclusion *Hepataug* showed a minimal disruption of the surgical workflow and can thus be feasibly used in real hepatectomy procedures. Thanks to its new mechanism of semi-automatic deformable alignment, *Hepataug* also showed a good agreement with LUS and visual CT or MRI inspection in subsurface tumor localization. Importantly, *Hepataug* yields reproducible results. It is easy to use and could be deployed in any existing operating room. Nevertheless, comparative prospective studies are needed to study its efficacy.

Keywords Laparoscopy · Liver · Resection · Augmented reality · Deformable 3D model · Overlay

✉ Le Roy Bertrand
leroybertrand8@gmail.com

¹ UMR6602, Endoscopy and Computer Vision Group, Faculté de Médecine, Institut Pascal, Bâtiment 3C, 28 place Henri Dunant, 63000 Clermont-Ferrand, France

² Department of Digestive and Hepatobiliary Surgery, Hospital Estaing, CHU de Clermont-Ferrand, 1 Place Lucie et Raymond Aubrac, 63003 Clermont-Ferrand, France

³ Délégation à la Recherche Clinique et à l'innovation, Hopital Gabriel Montpied, CHU de Clermont-Ferrand, Place Henri Dunand, 63000 Clermont-Ferrand, France

⁴ Department of Digestive and Oncologic Surgery, Hospital Nord, CHU de Saint-Etienne, Avenue Albert Raymond, 42270 Saint-Priest-en-Jarez, France

Laparoscopic surgery underwent a rapid development since the first laparoscopic cholecystectomy, which took place more than 25 years ago [1]. Even-though evidence shows that laparoscopic liver resection (LLR) reduces intra-operative bleeding, hospital stay, postoperative morbidity and pulmonary complications, its use remains limited [2–4]. This is explained by three main obstacles. First, controlling intra-operative bleeding using laparoscopic devices can be challenging and requires advanced technical skills [4]. Second, the surgeon cannot manually palpate the liver and thus cannot locate tumors and their resection margins easily, consequently creating a risk of inadequate oncological resection [5]. Third, laparoscopic ultrasonography (LUS), which is the only available tool for intra-operative tumor location, follows a steep learning curve to accurately visualize and interpret the subsurface anatomy [4, 5], especially in the

posterior segments. In order to alleviate these obstacles, an increasing number of studies focused on using augmented reality (AR) during LLR are being conducted by several teams worldwide [6–8]. The objective of AR is to use preoperative imaging to overlay the internal anatomical structures onto the laparoscopic image (Fig. 1). This makes the patient's organ virtually transparent and allows the surgeon to see the hidden subsurface anatomy such as vessels and tumors (Fig. 2) [9–11]. Previous work in AR guidance for LLR in monocular laparoscopy is mostly based on manually overlaying a *rigid* preoperative 3D model on the laparoscopic image [9–11]. This has a limited accuracy, keeping in mind that the liver is strongly deformed during surgery compared to its preoperative shape, due to intra-operative pneumoperitoneum, gravity, and mobilization [12–14].

Since a few years, our team has developed a software for AR guidance in monocular LLR called *Hepataug*. It uses a biomechanical *deformable* preoperative 3D liver model and so-called visual cues to capture the 3D shape of the liver from the laparoscopic image [6]. We have reported

Hepataug's technical details, use principle and potential interest in previous studies [15, 16], which have allowed us to continuously improve *Hepataug*. Importantly, we have assessed the accuracy of *Hepataug* on computer-simulated images [6], a 3D printed phantom [8] and an ex-vivo sheep liver [8] in previous pre-clinical tests. The average 3D error we found lies within a few millimeters, typically being of the order of 1–3 mm. These results were highly encouraging. The first step to take *Hepataug* to LLR procedures, which is our primary objective in this study, is to assess feasibility. Our secondary objective is to assess the potential benefit.

Methods

Inclusion criteria

Since July 2017, all the patients planned for LLR in the University Hospital of Clermont-Ferrand were included in this feasibility study. The patients were operated by a liver

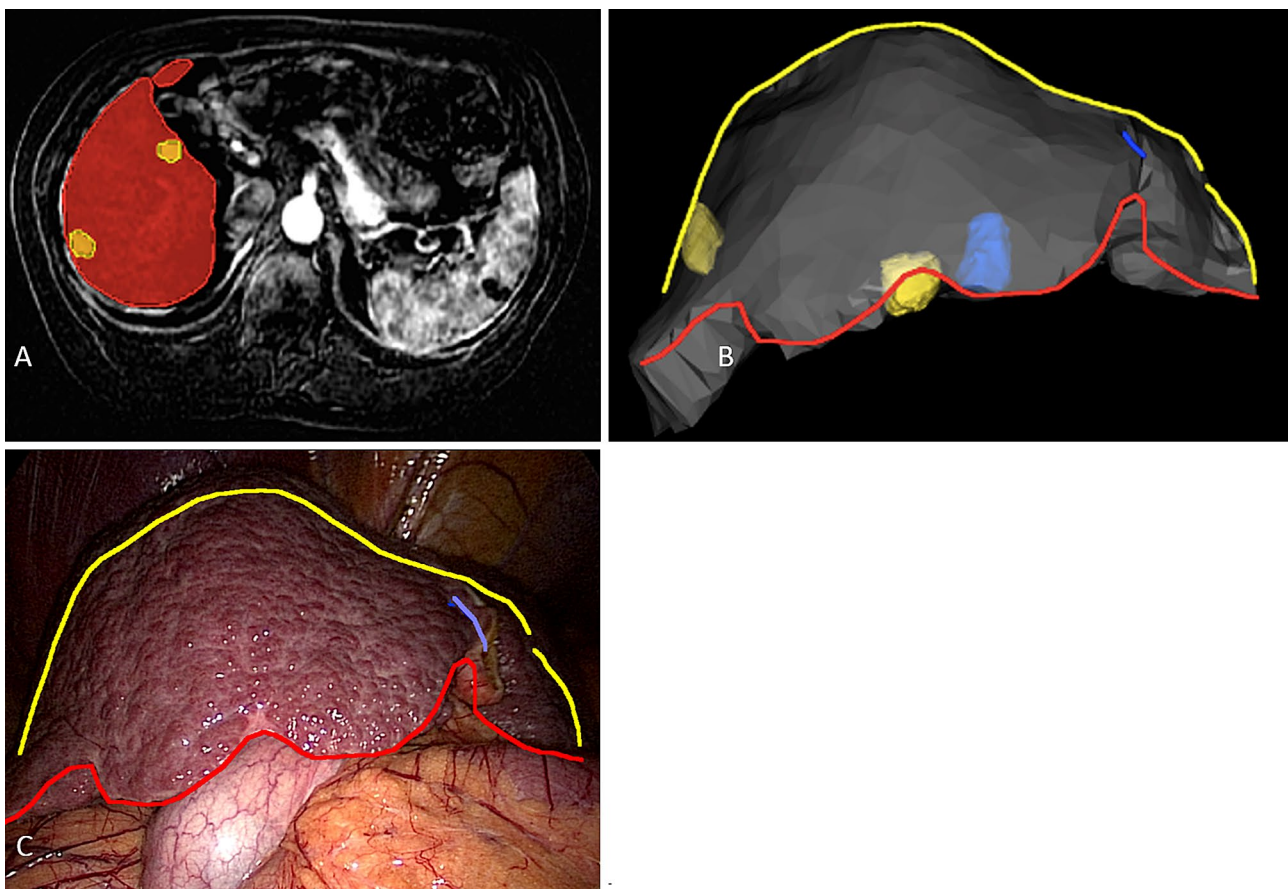


Fig. 1 A snapshot from CT segmentation (A) and the reconstructed 3D liver model with marked visible contours of the liver (B). The model shows the two tumors in green, the falciform ligament in dark blue and a ridge in light blue. (C) Example of manual marking of the

anatomical landmarks on the laparoscopic image. The liver's silhouette in yellow, the ridge in light blue, the falciform ligament in dark blue (Color figure online)

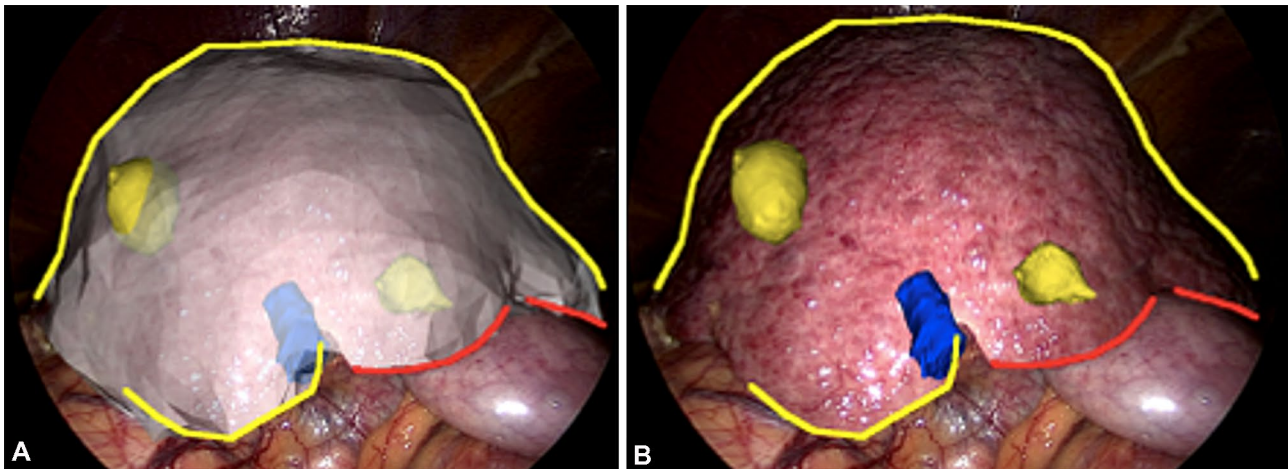


Fig. 2 Overlaid preoperative 3D liver model on a laparoscopy image with opaque tumors and transparent surface (A) or wireframe surface (B) visualization at the beginning of surgery

laparoscopic surgeon (EB or BLR) and only needed a preoperative CT scan or an MRI to be available and performed one month at most before surgery, and showing a liver tumor. The type, size, and number of tumors were not exclusion criteria, neither was the quality of the hepatic parenchyma. Liver resections were defined according to Couinaud's classification and then divided in 4 categories, namely major hepatectomy, minor hepatectomy, segmentectomy, and tumorectomy. As this is a feasibility study, the indications for LLR were not modified by the use of AR. Signed consent was obtained, which included a clause of no modification of the surgery. The anonymous data collection was supported by an ethical approval with ID IRB00008526-2019-CE58 issued by CPP Sud-Est VI in Clermont-Ferrand, France.

Surgical technique

LLR was performed using three ports initially, with addition of others ports depending on the surgical procedure and operator preference. Laparoscopic ultrasonography was routinely used. Tissue dissection and hemostasis were performed using the ultrasonic dissector (CUSA®, Integra Lifesciences), bipolar forceps, and thermofusion. The major hepatic veins were divided using a vascular stapler. Intermittent Pringle maneuver as in open procedures was used in case of bleeding only. The resected specimen was placed in a plastic bag and removed through a suprapubic incision without muscle section. This incision was immediately closed and the abdomen reinsufflated to confirm hemostasis and the absence of bile leaks. Methylene blue or air injection through the cystic drain was not routinely performed. Abdominal drainage was only used if there was concern about intra-operative bile control or the adequacy of hemostasis. All intra-operative parameters, including blood

loss with subsequent red cell transfusion, duration of surgery, Pringle maneuver and duration of the maneuver, were recorded. The patient was then discharged in postoperative care unit.

AR guidance with Hepataug

Hepataug's requires loading the patient's preoperative 3D liver model obtained from the preoperative CT or MRI and a single laparoscopic image obtained intra-operatively. The preoperative 3D liver model is reconstructed by segmenting the CT. It includes the liver's shape and intraparenchymal landmarks, namely the tumors, the inferior vena cava and the hepatic veins (Fig. 1A and 1B). At the time of surgery, *Hepataug* runs in the operating room on a separate computer, which is placed next to the laparoscopy screen. *Hepataug* is run at the beginning of the surgical procedure, specifically at the time of exploration of the abdominal cavity. The laparoscope is used to visualize the liver for a few seconds, showing it as entirely as possible, and the images are recorded into the computer. The surgeon then selects a still image of the liver and the assistant marks the liver's visible contours (Fig. 1C). Finally, *Hepataug* automatically overlays the liver's deformable preoperative 3D model onto the laparoscopic image (Fig. 2). The accuracy of this registration was assessed visually, but also by comparison with LUS, notably for the deep limits of the tumors. LUS was used in all cases as usual. In cases for which LUS was not interpretable or not helpful due to intra-operative artifacts or other difficulties to locate the tumors, *Hepataug* was assessed by visual inspection of the preoperative CT or MRI. In these cases, *Hepataug* was run multiple times to assess its ability to predict the tumor location at the beginning of surgery and during liver transection.

Endpoints and data collection

The primary endpoint is the feasibility of using *Hepataug* in LLR. Specifically, the feasibility criterion is that *Hepataug* can be run smoothly in the operating theatre, without significant interruption of the surgical workflow. The feasibility was also assessed by collecting the conversion rate to open surgery, R0 resection (defined by a tumor free margin greater than 1 cm on the definitive histopathological analysis), blood loss, duration of surgery, pedicle clamping, perioperative transfusion, surgical events, postoperative complications, hospital stay, distant events, resection margins, and disease recurrence. The secondary endpoint is the assessment of *Hepataug*. The surgeon subjectively classified the correlation between LUS and *Hepataug* as poor, moderate, or good. A good correlation was stated when all the landmarks (edge of the liver, tumors, inferior vena cava) were consistent, a poor correlation stated when all the landmarks were inconsistent, and a moderate correlation stated when a mix of consistent and inconsistent landmarks was found. When LUS was not usable, *Hepataug* was assessed with a careful visual inspection of the preoperative CT or MRI.

Statistical analysis

Statistical analyses were descriptive. They were performed using Stata software, version 13 (StataCorp, College Station,

US). Continuous data were presented as median and interquartile range.

Results

From July 2017 to March 2019, 17 patients were included in this study. The clinical data are summarized in Table 1. There were 8 women and 9 men, with a median age of 63 [IQR: 38–81]. The median BMI was 27.7 [IQR: 23–29]. The median tumor size of the biggest lesion measured on the preoperative imaging was 30 mm [IQR: 16–49] and the median cumulative tumor size was 30 mm [IQR: 25–50]. Among the 17 patients, 9 patients (53%) had liver disease or cirrhosis. Conversion to laparotomy occurred in 1 case (5%). Intermittent clamping was used in 15 procedures (88%). Median blood loss was 260 mL [IQR: 200–500]. The median hospital stay was 6 days [IQR: 5–8]. Postoperative severe complications that needed reintervention occurred in two cases (10%). These were a postoperative evisceration requiring abdominal wall closure and a biliary fistula requiring abdominal lavage and drainage. These complications were unrelated to the assessment of AR guidance feasibility, because therapeutic decisions were made independently of *Hepataug*. On the definitive histopathological analysis, all patients had R0 resection. In one case of benign tumor the transection plane was in contact with the lesion.

Table 1 Pre- and intra-operative data of included patients

Patient no	Procedure	Age (year)	ASA score	Etiology	Number of lesions	Tumor size	Bleeding (mL)	Clamping duration (minutes)	Duration of surgery (mins)
1	Right Hepatectomy	70	3	CRLM	5	30	500	60	360
2	Segmentectomy S8	68	3	HCC	1	30	400	71	160
3	Segmentectomy S6	75	3	CRLM	2	15	200	45	110
4	Left lobectomy	80	3	HCC	1	30	500	0	180
5	Right Hepatectomy	42	2	Others	3	10	500	88	420
6	Segmentectomy S5	81	3	CRLM	1	20	400	85	260
7	Segmentectomy S4	69	2	CRLM	1	2	100	0	260
8	Left Hepatectomy	63	2	Others	1	10	300	60	280
9	Tumorectomy S3-4	60	4	HCC	2	49	100	27	240
10	Left Hepatectomy	39	1	Others	1	85	300	50	210
11	Segmentectomy S5	82	3	HCC	1	50	400	98	300
12	Tumorectomy segment SVI/V	59	3	HCC	2	16	200	4	240
13	Right Hepatectomy	52	2	HCC	1	90	300	57	360
14	Segmentectomy S4a	38	1	Others	1	50	200	62	240
15	Segmentectomy S2 + right colectomy	51	2	CRLM	1	30	800	52	480
16	Segmentectomy S2	64	3	HCC	1	40	400	37	210
17	Segmentectomy S8	57	3	HCC	1	35	500	170	720

ASA American Society of Anesthesiologist; S Segment; CRLM Colorectal liver metastasis; HCC Hepatocellular carcinoma

Regarding our primary objective of feasibility assessment, we did not encounter a significant disruption of the surgical workflow for any of the procedures by using *Hepataug*. This strongly suggests that using *Hepataug*, hence AR with a deformable model, in LLR is feasible.

Regarding our secondary objective of potential benefit assessment, we observed a good correlation between LUS and AR given by the surgeons in all 15 cases where LUS could be successfully used, and the absence of a moderate or poor correlation. In the 2 remaining cases, *Hepataug* allowed us to see lesions that were not detected by LUS. The surgeon then performed a careful visual inspection of the preoperative CT or MRI next to the laparoscopic image. This allowed them to confirm and refine the tumor positions predicted by *Hepataug* for these 2 cases, whose final position assessment was hence rendered independent of AR assistance. We now describe these 2 cases in detail.

Case 1 The first patient for whom LUS was not predictive presented two metachronous colorectal liver metastases and was scheduled for laparoscopic wedge resection of these two lesions of 10 and 15 mm in segment 6. Because of their small size, their very lateral localization and the poor contrast with the non-tumoral parenchyma, the smallest lesion was not properly identified with LUS. We ran *Hepataug* a first time before starting the procedure. The predicted localization of the two lesions coincided with the improper LUS visualization and was confirmed by visual preoperative CT inspection. The resection line was then marked using electrocautery with 1 cm of free margins and the tumors were removed in-block. After the initial resection, LUS was used again to check the margins but was not contributive. We ran *Hepataug* a second time and confirmed the result from visual preoperative CT inspection. This required leaving the resected liver part temporarily in place. This crucially revealed that a margin on one side was not safe, with the transection plane in contact with the lesion (Fig. 3). Hence, the surgeon decided to perform a complementary resection to achieve a safest margin. The complementary resection of the inferior part of S6 was performed. On the histopathological analysis, the resection margins were greater than 1 cm after the complementary resection, thereby respecting the oncological rules. On the other hand, the margins of the initial resection did not exceed 1 mm. This case confirmed that running *Hepataug* twice during the procedure is feasible and demonstrates its potential interest in resection margin assessment.

Case 2 The second patient for whom LUS was not predictive was scheduled for a double resection of two HCC lesions located in segment 5 and segment 7 in a cirrhotic liver. The first lesion was resected without difficulty. The second lesion, however, which measured 11 mm on the preoperative MRI, was not visible with LUS due to macronodular liver cirrhosis. *Hepataug* was run and predicted the

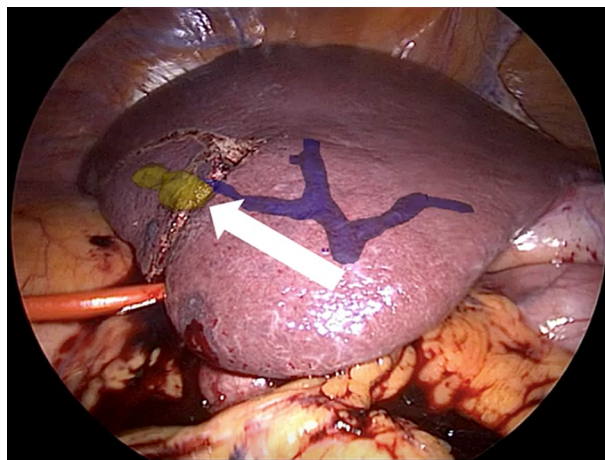


Fig. 3 Overlaid preoperative 3D liver model with opaque tumor visualization and transparent surface of the liver after the first resection. This shows that the free margins were not safe (Case 1)

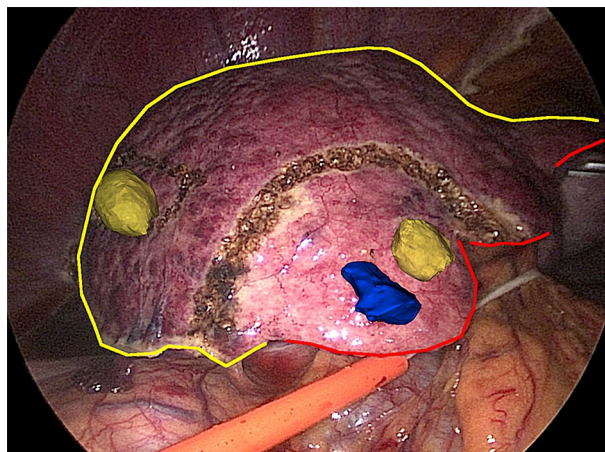


Fig. 4 Overlaid preoperative 3D liver model with opaque tumor visualization and transparent surface of the liver (Case 2)

tumor location, which was confirmed and refined by visual inspection of the preoperative MRI. This process was repeated 5 times during the procedure (Fig. 4). Histopathological analysis showed a complete resection of lesions with clear margins. This case confirmed that running *Hepataug* multiple times during the procedure is feasible and demonstrates its potential interest in resection margin assessment.

Discussion

This case series reported the feasibility and the potential interest of using *Hepataug* to achieve AR with a deformable model in LLR to locate tumors. In this case series, AR guidance was feasible in all 17 patients. For 15 patients, LUS could give a reliable prediction of the tumor location, in

good agreement with *Hepataug*'s prediction. For 2 patients, LUS could not give a reliable prediction of the tumor location. However, a careful visual inspection of the preoperative CT or MRI showed a good agreement with *Hepataug*'s prediction. This represents a first confirmation of the potential interest of *Hepataug* in surgical practice. The quantitative 3D accuracy of *Hepataug* cannot be assessed in real surgery because, by definition, one lacks a tool or method to infer the true location of subsurface organ structures to which augmented reality predictions could be compared with. Nonetheless, the accuracy of *Hepataug* has been assessed in previous pre-clinical studies on computer-simulated images, a 3D printed phantom and a sheep liver [6, 8]. We are currently working on a new and more realistic ex-vivo model using synthetic tumors and open ultrasonography to further these results.

Extra specialized equipment is not required for the use of *Hepataug*. It can be thus be easily used in the operative room. To obtain the final prediction of tumor location and AR guidance, the semi-autonomous registration time varied approximately between 1 to 3 min. In our experience, the first strength of AR is its ability to visualize internal parts regardless of the liver structure, irregularity of the transection plane, blood, and artifacts. AR provides a full 3D augmentation on the laparoscopy screen while LUS provides only local 2D cross-sectional images. AR is very interesting for cases of HCC on severe cirrhosis that can sometimes be unidentifiable by LUS due to macro-nodular lesions (as in case 2, Fig. 4). The assessment of free margins at the end of the surgery becomes possible and can be very interesting in the case of suspected invasion margins. AR also has the ability to easily locate and augment the subsurface structures difficult to access for LUS (posterior segments, vascular structures). Consequently, AR forms a powerful guidance tool for LLR. The cause of conversion to open surgery, which occurred in one case, was due to a difficult control of intra-operative bleeding and was not associated with the tumor location.

To the best of our knowledge, this study is the first case series on AR during laparoscopic liver surgery with a deformable model. As reported in Table 1, AR can potentially be interesting for various indications, from healthy to cirrhotic livers, and in a wide range of interventions from simple tumorectomy, to localize the lesion, to right or left hepatectomy, to check the lesion and choosing the transection plane. This study is thus highly encouraging regarding the feasibility and potential benefits of AR in LLR. However, the low number of patients and the fact that this study is not comparative does not allow us to conclude about efficacy.

Concerning case 1, the patient with colorectal liver metastases, *Hepataug* followed by visual preoperative CT inspection allowed us to locate tumors at the beginning of the operation and to define the transection plane on the

surface area of the liver. However, as in open surgery, the transection plane may deviate during the procedure and free margins may decrease. For this reason, at the end of the first resection, the margins were lower than 1 cm. We showed that the problem can be handled by re-running the process of tumor localization several times during surgery. A better way to avoid this type of problems would be to have a system able to track the liver in real-time during surgery and achieve continuous AR. However, to date, there is no technical solution to achieve this, and we are actively researching the problem in our team. As reported in a previous study, liver registration in monocular laparoscopy is extremely difficult to solve [6, 8]. The main obstacles are factors contributing to the change of the organ's representation intra-operatively compared to the preoperative imaging. These factors are cardiopulmonary motion, gas insufflation, gravity acting in different directions, and evolution of the disease. Furthermore, the monocular laparoscope does not provide the notion of depth as in a 3D camera, which increases the difficulty of registration. The liver is also only partially visible during surgery.

LUS is currently the only available intra-operative guidance tool. Surgeon experience is crucial in order to accurately localize the lesions, to check the resection margins before transection, to identify the important vascular structures, and to detect the presence of other lesions. On the other hand, the use of LUS is less ergonomic than open ultrasonography because the images are challenging to interpret due to various artifacts such as parenchymal bleeding, defects along the cutting edge, and difficulty to maintain the LUS probe in a correct axis along the transection plane. AR does not share these difficulties and is thus an interesting way to explore.

The literature in image-guided surgery is substantial and AR guidance in liver surgery has already been tested by several teams, including the IRCAD group in Strasbourg [12–14]. However, their preoperative model was designed for open surgery and overlaid onto the images *manually*, which can be inaccurate [17]. The strength of AR reported in their study is the ability to locate disappeared liver lesions, tumors which were visible in the original pretherapeutic CT scan but disappeared during the neoadjuvant treatment. Recently, Clements et al. have discussed an image-guided liver surgery system with deformation correction [18]. This procedure seems to be very interesting but their guidance system, designed for open surgery, requires the surgeon to swab the visible liver surface with an optically tracked stylus to reconstruct the visible surface in 3D, and overlays the preoperative deformable 3D model only onto the reconstructed 3D visible liver surface. The other methods proposed to solve liver registration automatically do not take account of gravity and pneumoperitoneum [9, 19]. There exist advanced methods which solve the problem but were designed to work

in different conditions from monocular laparoscopy, because these need multiple intra-operative images, an intra-operative CT scan, multiple cameras, or a stereoscopic camera [20, 21]. In contrast, *Hepataug* is designed for monocular laparoscopic liver surgery, even if it could also be used in open liver surgery and in robotic surgery. It is a semi-automatic solution, which simply requires one to outline the liver's contour on the laparoscopy image. Once this is done, the method has all the inputs it needs to produce a solution automatically in under a minute of computation.

This feasibility study concludes that AR with a deformable 3D model is feasible in LLR and has potential benefits in some cases, by its ability to locate tumors invisible to LUS. Comparative studies are needed to further assess the interest and efficacy of AR during LLR.

Compliance with ethical standards

Disclosures Bertrand Le Roy and Adrien Bartoli are cofounder of SurgAR, the society which will industrialize the *Hepataug* software. Mourad Abdallah, Yamid Espinel, Lilian Calvet, Bruno Pereira, Denis Pezet and Emmanuel Buc have no conflicts of interest or financial ties to disclose.

References

- Muhe E (1991) Laparoscopic cholecystectomy. *Z Gastroenterol Verh* 26:204–206
- Cheung TT, Poon RT, Yuen WK, Chok KS, Jenkins CR, Chan SC et al (2013) Long-term survival analysis of pure laparoscopic versus open hepatectomy for hepatocellular carcinoma in patients with cirrhosis: a single-center experience. *Ann Surg* 257(3):506–511
- Fuks D, Cauchy F, Ftéliche S, Nomi T, Schwarz L, Dokmak S, Scatton O, Fusco G, Belghiti J, Gayet B, Soubrane O (2016) Laparoscopy decreases pulmonary complications in patients undergoing major liver resection: a propensity score analysis. *Ann Surg* 263(2):353–361
- Buell JF, Cherqui D, Geller DA, O'Rourke N, Iannitti D, Dagher I et al (2009) The international position on laparoscopic liver surgery: the Louisville Statement, 2008. *Ann Surg* 250(5):825–830
- Yamamoto M, Kobayashi T, Oshita A, Abe T, Kohashi T, Onoe T et al (2019) Laparoscopic versus open limited liver resection for hepatocellular carcinoma with liver cirrhosis: a propensity score matching study with the Hiroshima Surgical study group of Clinical Oncology (HiSCO). *Surg Endosc*. <https://doi.org/10.1007/s00464-019-07302-y>
- Özgür E, Koo B, Le Roy B, Buc E, Bartoli A (2018) Preoperative liver registration for augmented monocular laparoscopy using backward-forward biomechanical simulation. *Int J Comput Assist Radiol Surg* 13(10):1629–1640
- Bourdel N, Collins T, Pizarro D, Debize C, Grémeau AS, Bartoli A et al (2017) Use of augmented reality in laparoscopic gynecology to visualize myomas. *Fertil Steril* 107(3):737–739. <https://doi.org/10.1016/j.fertnstert.2016.12.016>
- Espinel Y, Özgür E, Calvet L, Le Roy B, Buc E, Bartoli A (2020) Combining Visual Cues with Interactions for 3D–2D Registration in Liver Laparoscopy. *Ann Biomed Eng*. <https://doi.org/10.1007/s10439-020-02479-z>
- Pessaux P, Diana M, Soler L, Piardi T, Mutter D, Marescaux J (2014) Robotic duodenopancreatectomy assisted with augmented reality and real-time fluorescence guidance. *Surg Endosc* 28(8):2493–2498. <https://doi.org/10.1007/s00464-014-3465-2>
- Marescaux J, Rubino F, Arenas M, Mutter D, Soler L (2004) Augmented-reality-assisted laparoscopic adrenalectomy. *JAMA* 292(18):2214–2215
- Pessaux P, Diana M, Soler L, Piardi T, Mutter D, Marescaux J (2015) Towards cybernetic surgery: robotic and augmented reality-assisted liver segmentectomy. *Langenbecks Arch Surg* 400(3):381–385
- Nicolau S, Soler L, Mutter D, Marescaux J (2011) Augmented reality in laparoscopic surgical oncology. *Surg Oncol* 20(3):189–201
- Mutter D, Soler L, Marescaux J (2010) Recent advances in liver imaging. *Expert Rev Gastroenterol Hepatol* 4(5):613–621. <https://doi.org/10.1586/egh.10.57>
- Ntourakis D, Memeo R, Soler L, Marescaux J, Mutter D, Pessaux P (2016) Augmented reality guidance for the resection of missing colorectal liver metastases: an initial experience. *World J Surg* 40(2):419–426
- Phutane P, Buc E, Poirot K, Ozgur E, Pezet D, Bartoli A, Le Roy B (2018) Preliminary trial of augmented reality performed on a laparoscopic left hepatectomy. *Surg Endosc* 32(1):514–515. <https://doi.org/10.1007/s00464-017-5733-4>
- Le Roy B, Ozgur E, Koo B, Buc E, Bartoli A (2019) Augmented reality guidance in laparoscopic hepatectomy with deformable semi-automatic computed tomography alignment (with video). *J Visc Surg* 156(3):261–262. <https://doi.org/10.1016/j.jvisurg.2019.01.009>
- Paulus CJ, Haouchine N, Kong SH, Soares RV, Cazier D, Cotin S (2017) Handling topological changes during elastic registration: application to augmented reality in laparoscopic surgery. *Int J Comput Assist Radiol Surg* 12(3):461–470. <https://doi.org/10.1007/s11548-016-1502-4>
- Clements LW, Collins JA, Weis JA, Simpson AL, Kingham TP, Jarnagin WR, Miga MI (2017) Deformation correction for image guided liver surgery: an intraoperative fidelity assessment. *Surgery* 162(3):537–547. <https://doi.org/10.1016/j.surg.2017.04.020>
- Ferrari V, Viglialoro RM, Nicoli P, Cutolo F, Condino S, Carbone M et al (2016) Augmented reality visualization of deformable tubular structures for surgical simulation. *Int J Med Robot* 12(2):231–240
- Bernhardt S, Nicolau SA, Agnus V, Soler L, Doignon C, Marescaux J (2016) Automatic localization of endoscope in intraoperative CT image: a simple approach to augmented reality guidance in laparoscopic surgery. *Med Image Anal* 30:130–143. <https://doi.org/10.1016/j.media.2016.01.008>
- Plantefève R, Peterlik I, Haouchine N, Cotin S (2016) Patient-specific biomechanical modeling for guidance during minimally-invasive hepatic surgery. *Ann Biomed Eng* 44(1):139–153. <https://doi.org/10.1007/s10439-015-1419-z>

Publisher's Note Springer Nature remains neutral with regard to jurisdictional claims in published maps and institutional affiliations.