

# Deviance detection in auditory subcortical structures: what can we learn from neurochemistry and neural connectivity?

Daniel Duque · Yaneri A. Ayala · Manuel S. Malmierca

Received: 11 November 2014 / Accepted: 22 January 2015 / Published online: 8 March 2015  
© Springer-Verlag Berlin Heidelberg 2015

**Abstract** A remarkable ability of animals that is critical for survival is to detect and respond to unexpected stimuli in an ever-changing world. Auditory neurons that show stimulus-specific adaptation (SSA), i.e., a decrease in their response to frequently occurring stimuli while maintaining responsiveness when different stimuli are presented, might participate in the coding of deviance occurrence. Traditionally, deviance detection is measured by the mismatch negativity (MMN) potential in studies of evoked local field potentials. We present a review of the state-of-the-art of SSA in auditory subcortical nuclei, i.e., the inferior colliculus and medial geniculate body of the thalamus, and link the differential receptor distribution and neural connectivity of those regions in which extreme SSA has been found. Furthermore, we review both SSA and MMN-like responses in auditory and non-auditory areas that exhibit multimodal sensitivities that we suggest conform to a distributed network encoding for deviance detection. The un-

derstanding of the neurochemistry and response similarities across these different regions will contribute to a better understanding of the neural mechanism underlying deviance detection.

**Keywords** Auditory · Stimulus-specific adaptation · Mismatch negativity · Non-lemniscal · Inhibition · Deviance detection

## Introduction

In everyday life, animals are immersed in a continuous flow of sounds arriving from multiple sources, and the auditory system has the challenge of selecting those acoustic elements relevant for the creation of perceptual constructs (Fishman and Steinschneider 2010). One way of organizing the acoustic scene is as follows: (1) retaining it in a form of sound objects (Winkler et al. 2009), (2) storing the regularity of the objects in a sensory memory trace, (3) generating predictions about forthcoming events, and (4) comparing the subsequent incoming sounds with these predictions (Friston 2005; Bendixen et al. 2012). This is the current theoretical processing that occurs in deviance detection (Näätänen et al. 1978, 2001) in which biological systems identify new or deviant contextual events in an otherwise monotonous auditory scene.

The occurrence of auditory deviance detection has been classically associated with the human mismatch negativity (MMN) potential of the event-related potentials (Näätänen et al. 1978). MMN is classically measured by using an oddball paradigm in which a low probability of appearance (deviant) sound is randomly embedded within sequences of common (standard) sounds. MMN is defined as the difference between the event-related potentials evoked by the deviant (larger) and the standard (smaller) sounds. Human MMN peaks between the N1 (100 ms) and the P2 (180 ms) waves and can be

---

Daniel Duque and Yaneri A. Ayala contributed equally to this work.

Financial support was provided by the Spanish MINECO (BFU2013-43608-P) and JCYL (SA343U14) to M.S.M.; D.D. held a fellowship from the Spanish MINECO (BES-2010-035649); Y.A.A. held fellowships from the Mexican CONACyT (216106) and SEP.

The funders had no role in the study design, data collection and analysis, decision to publish, or preparation of the manuscript.

---

D. Duque · Y. A. Ayala · M. S. Malmierca (✉)  
Auditory Neuroscience Laboratory, Institute of Neuroscience of  
Castilla y León (INCyL), University of Salamanca, C/ Pintor  
Fernando Gallego, 1, Salamanca 37007, Spain  
e-mail: msm@usal.es

M. S. Malmierca  
Department of Cell Biology and Pathology, Faculty of Medicine,  
University of Salamanca, Campus Miguel de Unamuno,  
37007 Salamanca, Spain

interpreted as an enhancement of the N1 wave or as an independent phenomenon. This differentiation is not trivial, because the N1 wave is attributed to basic auditory processing occurring in the auditory cortex (AC; Hari et al. 1984; Maess et al. 2007), and one of the current interpretations of MMN is that adaptation is related to MMN generation (Fishman and Steinschneider 2012; Fishman 2013). Two conceptually different hypotheses have been proposed to explain the neuronal mechanisms that generate MMN. The first hypothesis is based on the “predictive coding” theory (Friston 2005) that postulates that the brain performs Bayes-optimal sensory learning under uncertainty (Friston 2009, 2012; Moran et al. 2013), whereby the brain creates a prediction concerning the identity of the next sound within an ongoing acoustic sequence based on a memory trace generated by previous stimulation. The violation of the memory-based regularity by a deviant sound would allow the generation of error signals and, therefore, MMN. On the other hand, some other authors (Jaaskelainen et al. 2004; May and Tiitinen 2010) defend a second explanation, namely the so-called “neural adaptation” hypothesis, whereby MMN reflects the release from adaptation elicited by the standard stimulus by the occurrence of a deviant sound. As neurons activated by deviant sounds are stimulated much less than neurons activated by standard sounds, such neurons are consequently less adapted and would elicit a stronger response. Thus, deviant sounds are going to elicit larger responses because adaptation for the standard sound would reduce the N1 wave. To establish the occurrence of “deviance detection”, i.e., the degree of enhancement in neuronal activity evoked by the occurrence of a deviant sound that is adaptation-independent, Schröger and colleagues (Schröger and Wolff 1996; Jacobsen and Schröger 2003) have designed a paradigm to control for the probability of occurrence and therefore for the adaptation elicited by the standard tone. Control paradigms have been implemented in subsequent human (Opitz et al. 2005; Maess et al. 2007; Cacciaglia et al. 2015) and animal (rat: Taaseh et al. 2011; Harms et al. 2014) studies. This approach has allowed researchers to separate the signals contributing to MMN attributable to neuronal refractoriness from those evoked by deviance occurrence.

MMN-like phenomena are well known to occur in several different animals, including cats (Csepe et al. 1987a, 1987b; Pincze et al. 2001, 2002), monkeys (Javitt et al. 1992, 1994; Fishman and Steinschneider 2012), guinea pigs (Kraus et al. 1994a, 1994b; Christianson et al. 2014), rabbits (Ruusuvirta et al. 1995a, 2010), rats (Ruusuvirta et al. 1998, 2013; Astikainen et al. 2006, 2011; Nakamura et al. 2011; Jung et al. 2013; Shiramatsu et al. 2013; Harms et al. 2014), and mice (Siegel et al. 2003; Umbricht et al. 2005). Recently, it has been reported that the rat brain is capable of generating human-MMN-like responses, and moreover, that part of the MMN signal is independent of adaptation driven by memory-like processing (Astikainen et al. 2006; Harms et al. 2014). In

agreement with this study, true-deviance detection is also reflected at the single neuron level in the rat AC (Taaseh et al. 2011). Although deviance encoding has been largely thought to involve pure cortical processing, an elegant and recent study by Cacciaglia and colleagues (2015) has demonstrated that the human inferior colliculus (IC) and medial geniculate body (MGB) of the thalamus exhibit genuine deviance detection. This study confirms previous data indicating deviance detection at very short latency responses (~30–40 ms) in auditory-evoked potentials (Slabu et al. 2010, 2012).

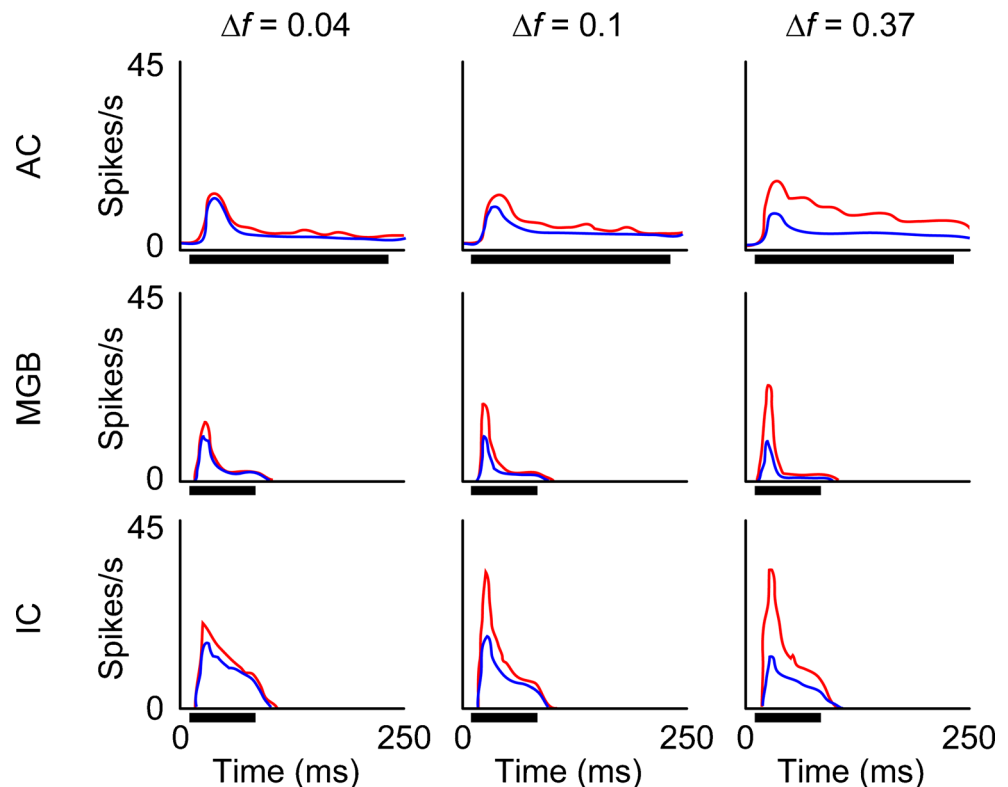
Here, in an attempt to gain a better understanding of deviance detection, we review the anatomy and immunocytochemistry of the IC and MGB, since they might reveal the general organizational principles of the subcortical network for deviance detection. Likewise, we present data concerning auditory mismatch responses in non-auditory subcortical structures that might be part of the same network.

### Stimulus-specific adaptation

Using the same oddball paradigm as in human MMN studies, Ulanovsky et al. (2003) have found that AC neurons of the cat reduce their response to frequently occurring stimuli (standard) but resume their firing when different rare stimuli are presented (deviant). This neuronal response has been referred to as stimulus-specific adaptation (SSA; Movshon and Lennie 1979). Later studies have demonstrated that SSA also occurs in the IC (rat: Perez-Gonzalez et al. 2005; Malmierca et al. 2009; Duque et al. 2012; Ayala et al. 2013) and the MGB (mouse: Anderson et al. 2009; rat: Antunes et al. 2010). By contrast, neurons in the cochlear nucleus lack SSA (rat: Ayala et al. 2013), suggesting that the IC is the first auditory relay station in which SSA occurs.

Throughout the auditory collicular, thalamic, and cortical areas, SSA has several common characteristics that are similar to the human MMN. SSA is a rapid phenomenon, with a time scale of a few seconds (Ulanovsky et al. 2004; Malmierca et al. 2009; Ayala and Malmierca 2013), and is highly sensitive to stimulus statistics: the smaller the probability of occurrence for the deviant, the larger the SSA (Ulanovsky et al. 2003; Malmierca et al. 2009; Antunes et al. 2010; Zhao et al. 2011; Ayala et al. 2013). These same studies have also revealed that increasing the frequency contrast (the physical separation between the two tones) or the presentation rate (the speed to which the tones are repeated) evokes stronger SSA responses, although SSA can be observed at interstimulus intervals as long as 2000 ms (Ulanovsky et al. 2003; Antunes et al. 2010; Ayala and Malmierca 2013, Fig. 1). As SSA in the AC was first observed in the core region of the AC (Ulanovsky et al. 2003), some authors proposed SSA emerged in the AC as a high order feature that can be “inherited” by the

**Fig. 1** Grand-average responses of neurons in the inferior colliculus (IC), the medial geniculate body (MGB), and the auditory cortex (AC). Averaged peristimulus time histograms (PSTH) for the entire population of neurons recorded at various frequency contrasts ( $\Delta f$ ) for a standard/deviant ratio of 90/10 %. The mean firing rate elicited by both stimuli (blue lines standard, red lines deviant) increased at the different  $\Delta f$  ( $\Delta f=0.04, 0.1,$  and  $0.37$ ; from left to right, respectively). Black horizontal lines under the PSTHs indicate the duration of the stimulus: 230 ms for the AC study and 75 ms for the IC and MGB studies (modified from Ulanovsky et al. 2003; Malmierca et al. 2009; Antunes et al. 2010)



IC and the MGB via the corticofugal pathway (Nelken and Ulanovsky 2007; Bäuerle et al. 2011). However, recent studies with the powerful technique of cortical cooling (Antunes and Malmierca 2011; Anderson and Malmierca 2013) have demonstrated that the corticofugal projections arising from the core AC regions modulate, but do not generate, subcortical SSA. Currently, SSA is thought to be created de novo at each auditory station or to be transmitted in a cascade process from low to higher order nuclei. In this review, we will describe possible mechanisms involved in SSA, with special emphasis on the anatomical substrate that might underlie the connectivity of SSA neurons and on the receptor distributions in the subcortical nuclei of the IC and the MGB.

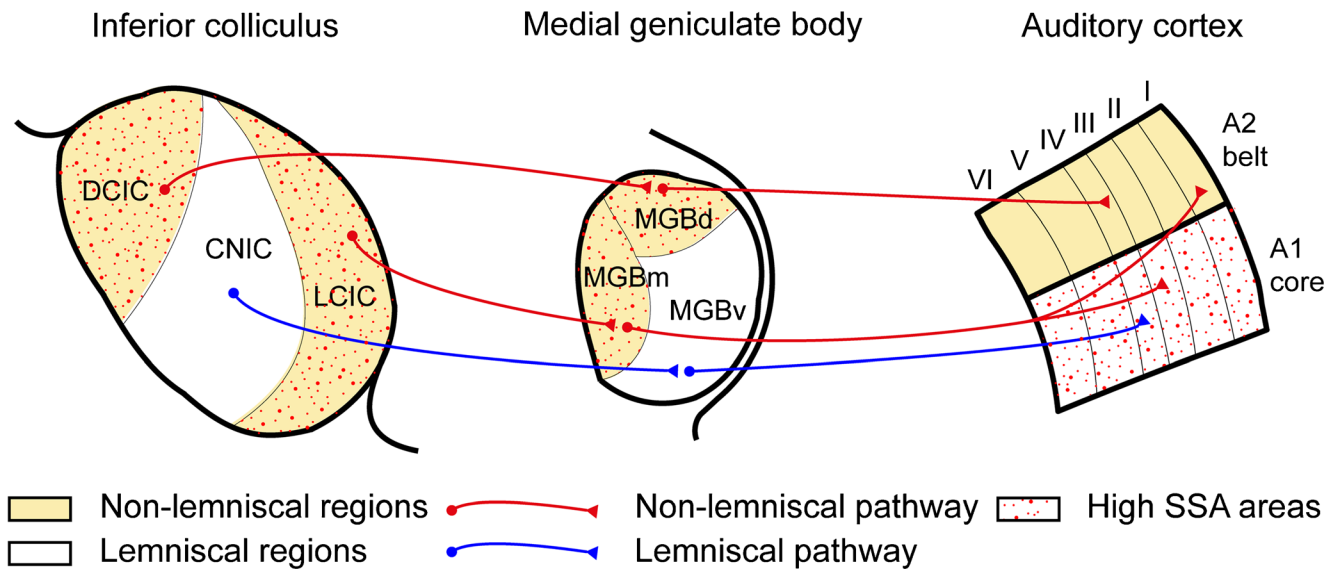
Throughout the following, SSA will be used to describe a specific reduction of the responses at a neuronal level, whereas MMN (or MMN-like) will be used for differential responses observed at local field potentials. Conceptually, this is different from deviance detection, which refers to an enhancement in the neuronal response evoked by the occurrence of a rare sound and which is independent of adaptation.

#### **SSA is not homogeneously distributed in IC and MGB; connectivity of lemniscal and non-lemniscal subdivisions**

Auditory processing between the midbrain and the cortex is carried by two parallel streams: the lemniscal (or primary) and non-lemniscal (or secondary) pathways (Fig. 2; Andersen et al.

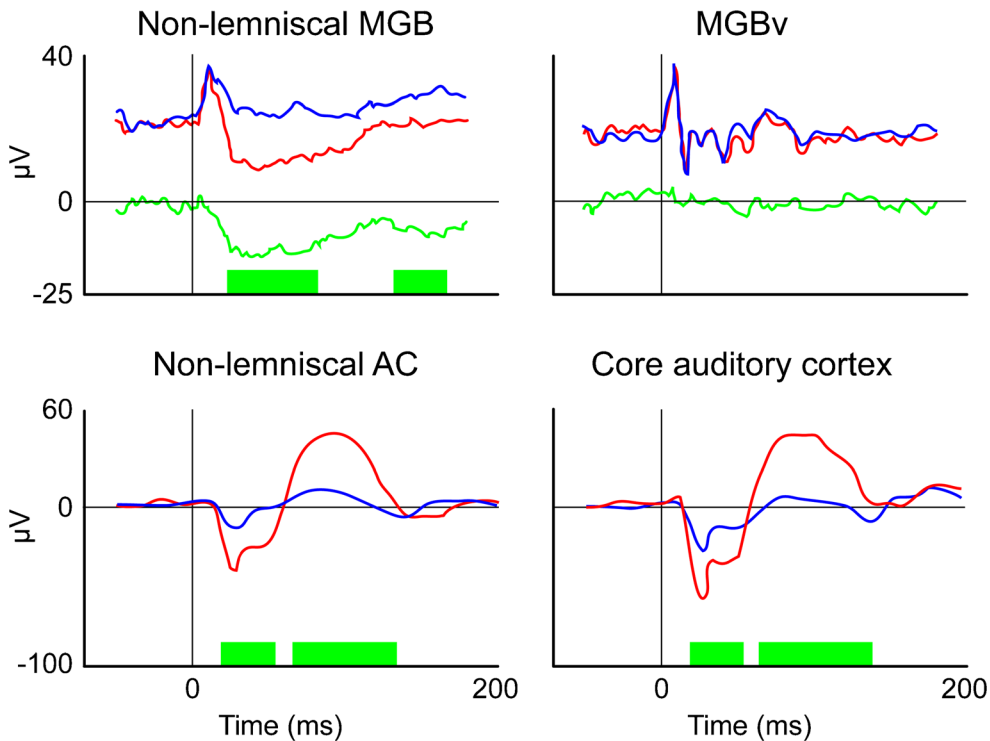
1980; Lee and Sherman 2010, 2011). The non-lemniscal system comprises the lateral (LCIC), the rostral (RCIC), and the dorsal cortex (DCIC; Loftus et al. 2008, 2010) of the IC and the dorsal (MGBd) and medial subdivisions (MGBm) of the MGB in the thalamus. On the other hand, the lemniscal system comprises the central nucleus of the IC (CNIC) and the ventral division of the MGB (MGBv). Across these subcortical nuclei, SSA responses are not homogeneously distributed. Neurons in the cortices of the IC (rat: Malmierca et al. 2009; Duque et al. 2012; Ayala et al. 2013) and in the MGBd and MGBm (mouse: Anderson et al. 2009; rat: Antunes et al. 2010) exhibit the strongest SSA responses. In agreement with SSA data, a pioneering study by Kraus et al. (1994b) has shown that auditory stimuli containing different frequencies or intensities consistently produce a mismatched field potential in the non-lemniscal divisions of the thalamus but not in the MGBv of the guinea pig (Fig. 3). Although such correlation has not been confirmed in the rat AC (Fig. 3, Nakamura et al. 2011; Jung et al. 2013; Shiramatsu et al. 2013), all these data suggest that subcortical acoustic deviance detection is primarily computed by neurons of the non-lemniscal pathway.

Lemniscal and non-lemniscal neurons differ in (1) their response properties (cat: Aitkin et al. 1975; Calford 1983; Calford and Aitkin 1983; Aitkin and Prain 1974; mouse: Anderson and Linden 2011; rat: Lumani and Zhang 2010), (2) their fine morphology, i.e., terminal size and arborization pattern (Oliver 2005; rat: Malmierca et al. 1995; 2011; Stebbings et al. 2014), and in (3) their set of afferent and



**Fig. 2** Topographic segregation of the lemniscal and non-lemniscal projections between the inferior colliculus (IC), medial geniculate body (MGB) and auditory cortex (AC). The strongest SSA responses are distributed in the non-lemniscal subdivisions (shaded areas) of the IC (DCIC dorsal cortex, LCIC lateral cortex, RCIC rostral cortex) and MGB (MGBd dorsal subdivision, MGBm medial subdivision). On the contrary, poor SSA responses are found in the lemniscal areas of the IC

(CNIC central nucleus) and MGB (MGBv ventral subdivision). At the cortical level, the primary auditory cortex (A1) exhibits SSA responses that remain to be addressed in areas beyond A1. The major bottom-up projections between non-lemniscal (red) and lemniscal (blue) collicular, thalamic, and cortical areas are illustrated by lines (modified from Escera and Malmierca 2014)



**Fig. 3** Comparison of MMN-like responses through the lemniscal and non-lemniscal regions of the medial geniculate body (MGB) and the auditory cortex (AC). *Top* Grand average responses to standard (blue lines) and deviant (red lines) stimuli recorded from the non-lemniscal MGB (left caudomedial portion of the guinea pig equivalent to the cat MGBm and MGBd) and the MGBv (right). Significant differences between the responses to standard and deviant stimuli are indicated by the green boxes that appear under the various waves (green lines). *Bottom*

Auditory evoked potentials to deviant (red lines) and standard stimuli (blue lines) elicited in a non-lemniscal region of the AC (left posterior auditory field) and in the core region of the AC of the rat (right). Significant differences between the responses to standard and deviant stimuli are indicated by the green boxes. Unlike the MGB, MMN-like waves in the AC have not been shown to be spatially distributed (modified from Kraus et al. 1994a; Jung et al. 2013)

efferent projections (rat: Coleman and Clerici 1987; Malmierca and Hackett 2010; for reviews, see Hu 2003; Lee and Sherman 2011). Lemniscal neurons are tonotopically organized exhibiting fast and high-fidelity responses (cat: Miller et al. 2001; rat: Malmierca et al. 2008), whereas non-lemniscal neurons are not tonotopically organized and show longer latencies and habituating responses to unvarying stimuli (cat: Calford 1983; Calford and Aitkin 1983; rat: Bordi and LeDoux 1994a, 1994b; Malmierca et al. 2009; guinea pig: He and Hu 2002). Furthermore, non-lemniscal neurons show broader frequency response areas, i.e., the combination of frequencies and intensities capable of evoking a response (Lennartz and Weinberger 1992; Perez-Gonzalez et al. 2005; Malmierca et al. 2009; Duque et al. 2012; Ayala et al. 2013) and respond preferentially to complex acoustic stimuli (cat: Aitkin et al. 1975). Moreover, the basal discharge and response strength are lower in the non-lemniscal than lemniscal neurons of the IC (rat: Duque et al. 2012) and MGB (cat: Aitkin and Prain 1974; Calford and Aitkin 1983). Interestingly, both the bandwidth of the frequency responses areas (rat: Duque et al. 2012; Ayala et al. 2013) and the onset firing pattern (rat: Duque et al. 2012) correlates with the strength of the SSA responses of IC neurons. Regarding their connectivity, the CNIC primarily sends excitatory and inhibitory projections to the MGBv (for reviews, see Oliver and Huerta 1992; Wenstrup 2005) with a high degree of topographic convergence (Lee and Sherman 2011), whereas the cortices of the IC innervate primarily the MGBd and MGBm (mouse: Romand and Ehret 1990; for reviews, see Hu 2003; Wenstrup 2005). At the level of the MGB, two major afferent streams arise en route to the auditory cortices (cat: Huang and Winer 2000; for a review, see Hu 2003). Generally speaking, secondary auditory cortices are targeted principally by non-tonotopic subcortical areas that mainly terminate in layer 1, whereas primary auditory cortices principally receive inputs from tonotopic lemniscal areas that target mainly the middle layers (cat: Kudo and Niimi 1980; Huang and Winer 2000; Lee and Winer 2011; for a review, see Winer 1992).

Traditionally, the early sensory processing neuronal stages are assumed to be unimodal and to operate independently of each other. However, a growing body of evidence has changed this classical view of the sensory hierarchical processing by demonstrating the convergence of multimodal inputs in subcortical nuclei (Stein and Meredith 1993; Stein and Stanford 2008) and early primary sensory cortices (Ghazanfar et al. 2005; Kayser and Logothetis 2007; Lakatos et al. 2007; King and Walker 2012; for a review, see Kayser et al. 2012). In agreement with the above-mentioned, another feature of the non-lemniscal tectal and thalamic areas includes their dense innervation by non-auditory afferents. For instance, the shell area of the IC receives visual (rat and monkey: Itaya and Van Hoesen 1982; rat: Yamauchi and Yamadori 1982; cat: Mascetti and Strozzi 1988) and somatosensory (cat: Aitkin

et al. 1978, 1981; Coleman and Clerici 1987; for a review, see Wu et al. 2014) inputs and projections from the substantia nigra pars compacta lateralis (cat: Coleman and Clerici 1987), globus pallidus (rat: Yasui et al. 1991; cat: Shinonaga et al. 1992), and the ventral tegmental area (rat: Herbert et al. 1997). Likewise, the MGBd and MGBm are innervated by afferents from the tegmental nuclei, spinothalamic tract, and superior colliculus (cat: Graybiel 1972; rat: Ledoux et al. 1987; Iwata et al. 1992). The efferent connections of the non-lemniscal areas of the IC (cat: Aitkin et al. 1978; ferret: King et al. 1998) and MGB (cat: Shinonaga et al. 1994; rat: Doron and Ledoux 1999; 2000) also display divergent projections to non-auditory nuclei.

Together, these structural differences are associated with the different functions exerted by the lemniscal and non-lemniscal systems. The lemniscal pathway is associated primarily with the relay of purely auditory information, whereas the non-lemniscal pathway is part of an integrative system primarily involved in multisensory integration, temporal pattern recognition (cat: Kelly 1973; Layton et al. 1979), change detection (guinea pig: Kraus et al. 1994a; rat: Malmierca et al. 2009), and certain forms of learning (guinea pig: Edeline and Weinberger 1991; rat: Komura et al. 2001). Furthermore, the multimodal afferent and efferent projections characterizing the non-lemniscal pathway are potentially important for sound localization, attending to salient stimuli, and mediating the audio-visual integration of speech stimuli (human: Champoux et al. 2006; for reviews, see Gruters and Groh 2012; Wu et al. 2014).

### Major excitatory and inhibitory neurotransmitter receptors

The distribution and expression of receptor subtypes for neurotransmitters and neuromodulators show subtle differences in the IC and MGB subdivisions (summarized in Table 1).

Excitatory neurotransmission is mediated by glutamate in both the IC (cat: Adams and Wenthold 1979) and the MGB (rat: Hu et al. 1994). Both ionotropic AMPA ( $\alpha$ -amino-3-hydroxy-5-methylisoxazole-4-propionic acid) and NMDA (N-methyl-D-aspartate) receptors intervene in the synaptic transmission of the IC (rat: Ma et al. 2002; for a review, see Kelly and Zhang 2002) and the MGB (rat: Hu et al. 1994), but recordings from the non-lemniscal regions of the IC do not provide evidence for pharmacological differences from the CNIC (rat: Li et al. 1998, 1999). Immunostaining for AMPA receptors is homogeneous throughout the IC (rat: Petralia and Wenthold 1992; Gaza and Ribak 1997), although the presence of the GluR2-3 AMPA subunit is more common in the non-lemniscal regions of the IC (rat: Caicedo and Eybalin 1999). Additionally, NMDA receptors are more common in the LCIC and the DCIC (rat: Petralia et al. 1994). In accordance with the

**Table 1** Main receptor distribution in the human inferior colliculus (IC) and medial geniculate body (MGB) shown with density (– absent, + to +++ increasing density levels, SSA stimulus-specific adaptation, CNIC central nucleus of IC, LCIC lateral cortex, RCIC rostral cortex, DCIC dorsal cortex, MGBv ventral division of MGB, MGBd dorsal subdivision

of MGB, MGBm medial subdivision of MGB, AMPA  $\alpha$ -amino-3-hydroxy-5-methylisoxazole-4-propionic acid, NMDA N-methyl-D-aspartate, GABA Gamma aminobutyric acid, nNOS Neural nitric oxide synthase)

Transmitter type receptor		IC				MGB			SSA implication
		Lemniscal		Non-lemniscal		Lemniscal	Non-lemniscal		
		CNIC	DCIC	LCIC	RCIC	MGBv	MGBd	MGBm	
Glutamate	AMPA	Homogeneous				Homogeneous			Unlikely
	NMDA	+	+++			+	+++		Likely
	mGluR	–	+++			–	+++		Likely
GABA	A	Dorsal		Clusters		Homogeneous			Gain control
	B	+++	+	+++	+	+++	+++	–	Low
Glycine		Ventral		+		–	–	–	Unlikely, IC only
Acetylcholine	Muscarinic	–	+	+	–	Homogeneous			Attention?
	Nicotinic	–	+++	+++	–	Homogeneous			Attention?
Serotonin		+	+++	+++	+++	+	+++	Unknown	Attention?
Norepinephrine		+	+++	+++	+++	Unknown			Learning?
Dopamine		+	+++	+++	+++	Very low			Learning? IC only
Endocannabinoids		Unknown	Unknown	Present		Unknown			Speculative
nNOS		+	+++	+++	+++	Unknown			Speculative
Dynorphin		+	+	+++	+++	Unknown			Unknown
Enkephalin		Homogeneous				Unknown			Unlikely
Substance P		+	+++	+++	+++	Unknown			Speculative

IC data, the presence of AMPA receptors in the MGB has been proved to be homogeneous and moderate in quantity (rat: Sato et al. 1993; Caicedo et al. 1998; for a review, see Parks 2000), whereas the presence of NMDA receptors seems more prominent in the non-lemniscal regions of the MGB (rat: Monaghan and Cotman 1985; Hu et al. 1994). Immunohistochemical studies have also demonstrated the presence of the metabotropic glutamate receptor mGluR<sub>5</sub> in the cortical regions of the IC (rat: Abe et al. 1992; Shigemoto et al. 1993). Group I mGluRs, including mGluR<sub>1</sub> and mGluR<sub>5</sub>, are located mostly on post-synaptic parts of cells and act by increasing NMDA activity. Projections from the DCIC and LCIC to the non-lemniscal regions of the MGB recruit mGluR (rat: Bartlett and Smith 2002; mice: Lee and Sherman 2010), as opposed to the mainly ionotropic component of the postsynaptic receptors of the MGBv (for a review, see Lee and Sherman 2011). As NMDA receptors are classically linked to synaptic plasticity, learning, and memory (Morris 2013), the testing of the role, if any, that the NMDA receptors play on shaping SSA would be of great interest in future studies.

Inhibitory neurotransmission in the IC is mediated by both gamma-aminobutyric acid (GABA) and glycine (for a review, see Cant and Benson 2003). GABA<sub>A</sub> receptors are located in more dorsal regions of the IC (gerbil: Sanes et al. 1987; bat: Fubara et al. 1996; Lu and Jen 2001), whereas glycine puncta

are more prominent in the ventral region of the IC (cat: Adams and Wenthold 1979; Saint Marie et al. 1989; rat: Merchan et al. 2005). Nevertheless, this is not the only pattern of distribution that emerges with inhibition in the IC, as GABAergic neurons are also organized in cluster modules in the DCIC and the LCIC (rat: Chernock et al. 2004), with an unknown function. Additionally, metabotropic GABA<sub>B</sub> receptors are present to a greater extent in the CNIC and the LCIC (rat: Bowery et al. 1983; bat: Fubara et al. 1996; rat: Jamal et al. 2011, 2012). In the thalamus, inhibition in the MGB is primarily mediated by GABA acting at both GABA<sub>A</sub> and GABA<sub>B</sub> receptors (rat: Bartlett and Smith 1999; Richardson et al. 2011), because MGB lacks glycinergic receptors (rat: Aoki et al. 1988; Friauf et al. 1997). GABAergic interneurons are virtually absent in the rat MGB (only ~1 %: Winer and Larue 1996; Bartlett and Smith 1999), but in this case, the nucleus receives significant GABAergic projections from the IC (bat, rat, cat, and monkey: Winer et al. 1996; rat: Peruzzi et al. 1997; mice and rat: Ito et al. 2011) and the thalamic reticular nucleus (cat: Rouiller et al. 1985).

Recent studies have addressed the effect of neuronal inhibition on SSA by local manipulation of GABA neurotransmission (Fig. 4). The blockade of the GABA<sub>A</sub> receptor by using the specific antagonist gabazine elicits an overall increase in the evoked and spontaneous activity in IC (rat: Perez-Gonzalez et al. 2012) and MGB (rat: Duque et al.

2014) neurons. This increase in neuronal discharge is independent of the SSA sensitivity and their discharge pattern. Together, these studies demonstrate that the blockade of GABA<sub>A</sub> receptors of IC and MGB neurons with high SSA sensitivity (typically located in non-lemniscal regions) does not abolish SSA (rat: Perez-Gonzalez et al. 2012; Duque et al. 2014), suggesting that the GABAergic system exerts a gain control function on the neuronal responses. Furthermore, the experiments performed in the MGB by Duque et al. (2014) suggest that the ability of GABA to modulate SSA in the MGB is likely to be mediated by the GABA<sub>A</sub> rather than by the GABA<sub>B</sub> receptors. The effects of gaboxadol, a GABA<sub>A</sub>-selective agonist that does not bind to GABA<sub>B</sub> receptors (rat: Bowery et al. 1983), are no different from the effects elicited by GABA on SSA in MGB. Moreover, as the highest levels of SSA are found in the MGBm (rat: Antunes et al. 2010), an area that lacks GABA<sub>B</sub> receptors (rat: Smith et al. 2007), these metabotropic receptors do not seem to be involved in SSA generation. However, any possible synergic effect as a result of the co-application of antagonist or agonists of other subunit or subtype receptors cannot be excluded.

Indeed, as metabotropic receptors (mainly GABA<sub>B</sub>) are linked to calcium (Ca<sup>2+</sup>) signaling, Ca<sup>2+</sup>-binding proteins (namely parvalbumin, calbindin, and calretinin) largely define the lemniscal and non-lemniscal pathways (monkey: Jones 2003; human: Tardif et al. 2003; bats and birds: Covey and Carr 2005; rat: Ouda and Syka 2012). In the IC, parvalbumin is distributed throughout the subdivisions but with a larger presence in the CNIC (bat: Vater and Braun 1994; rat: Lohmann and Friauf 1996; Ouda and Syka 2012). On the other hand, calretinin- and calbindin-positive neurons are usually located in the non-lemniscal regions of the IC (bat: Zettel et al. 1991; rat: Ouda and Syka 2012). In the MGB, parvalbumin is also associated with the lemniscal regions, whereas calbindin is associated with the non-lemniscal regions (rabbit: de Venecia et al. 1995; monkey: Molinari et al. 1995; mice: Cruikshank et al. 2001). The parvalbumin (lemniscal) and calbindin/calretinin (non-lemniscal) distributions are also maintained in the AC (Banks and Smith 2011). The presence of these Ca<sup>2+</sup>-related proteins might play a critical role in second messenger systems (see: [Neuronal mechanisms that might underlie SSA: synaptic depression and retrograde signaling](#)).

Finally, although the presence of glycine in the non-lemniscal regions of the IC is small (Adams and Wenthold 1979; Merchan et al. 2005), the effect of glycinergic receptors in IC neurons on SSA remains unknown. This is an important point, because IC neurons show higher SSA sensitivity at high frequencies (Duque et al. 2012), and glycine is more abundant in the ventral region of the IC (Malmierca and Hackett 2010), a region whose neurons are high-frequency tuned (Malmierca et al. 2008). Thus, in order to have a global picture of the mechanisms that might operate at subcortical SSA, several open questions remain to be answered. Among others, these

include: what is the effect on SSA mediated by the combined activation of the GABA<sub>A</sub>- and GABA<sub>B</sub>-receptors and glycinergic receptors, and what is the role, if any, of the NMDA-mediated excitation. Lastly, as will be explained in the following sections, the interactions of any of these systems with specific retrograde messengers could also be crucial to an understanding of the mechanisms that generate SSA.

### Neuromodulators in IC and MGB

Recent studies have envisaged a pivotal role of neuromodulators on orienting attention and enhancing the memory for novel stimuli (for reviews, see Ranganath and Rainer 2003; Edeline 2012). Indeed, the four neuromodulatory systems, namely cholinergic (Metherate et al. 2012), serotonergic (Hurley and Sullivan 2012), dopaminergic (Gittelman et al. 2013), and noradrenergic (Manunta and Edeline 2004), have been implicated in short-term plastic auditory phenomena suggesting that they might also mediate SSA.

Acetylcholine has been implicated in predictive coding and learning under uncertainty in humans (Moran et al. 2013). Moreover, acetylcholine is known to exert frequency-specific plasticity in both cortical (cat: Metherate and Weinberger 1989) and subcortical (bat: Ji et al. 2001) neurons. Cholinergic terminals are abundant in the DCIC and the LCIC (guinea pig: Jain and Shore 2006; for a review, see Shore 2008), and the receptors in these regions are mainly nicotinic. In the MGB, almost all the neurons present either muscarinic and/or nicotinic receptors and are excited by acetylcholine (cat: Tebecis 1970, 1972). Acetylcholine depolarizes most of the neurons in the lemniscal MGBv through the muscarinic receptors, whereas a large amount of the neurons in the MGBd remain unaffected (rat: Varela and Sherman 2007; for a review, see Varela 2014).

Serotonergic projections to all the regions of the IC arise from the raphe nuclei (bat: Hurley and Pollak 2005), although fibers are denser in non-lemniscal regions such as the DCIC and the LCIC (for reviews, see Hurley et al. 2002; Hurley and Sullivan 2012). Raphe nuclei also present projections to the MGB (monkey: Lavoie and Parent 1991; rat: Vertes et al. 2010), modulating the responses of many of the neurons in the lemniscal MGBv and most of the neurons in the non-lemniscal MGBd (guinea pig: Pape and McCormick 1989; cat: McCormick and Pape 1990; ferret: Monckton and McCormick 2002; rat: Varela and Sherman 2009; Varela 2014).

Attention during task engagement is known to modulate neuronal responses (ferrets: Fritz et al. 2003, 2007), and thus, attention mediated by either acetylcholine or serotonin might produce this modulation, hence affecting the levels of SSA. Indeed, recent work concerning SSA in the IC of the awake mouse (Duque and Malmierca 2014) has demonstrated that

the lower the spontaneous firing rates, the higher the SSA sensitivity. As spontaneous activity can be modulated during attention and can enhance signal detection (gerbils: Buran et al. 2014), both neuromodulators might be involved in SSA sensitivity. In view of the involvement acetylcholine (Jones 2005) and serotonin (Kelly and Caspary 2005) in arousal and attention, the effect of such neurotransmitters on SSA might be more important than previously estimated, and we need further studies in this field.

The response of the neurons of the IC and the MGB are also affected by catecholamines, mainly through noradrenergic- (rat: Swanson and Hartman 1975; Foote et al. 1983; Klepper and Herbert 1991) and dopaminergic (rat, cat and bat: Olazabal and Moore 1989; cat: Paloff and Usunoff 2000) fibers. The locus coeruleus is the main source of noradrenaline for both the IC and the MGB (Aston-Jones 2004). The dopaminergic innervation for the IC arises from neurons in the substantia nigra (Moore and Bloom 1979; Olazabal and Moore 1989), whereas the dopamine sources for the MGB are highly diverse (macaque: Sanchez-Gonzalez et al. 2005). Recent findings suggest that the noradrenergic direct projection from the locus coeruleus to the IC is mainly ipsilateral and just reaches the non-lemniscal regions of the IC (rat: Klepper and Herbert 1991; Hormigo et al. 2012). The dopaminergic neurons identified in the IC also have a distinct distribution, the largest number of dopaminergic neurons being located in the LCIC and the DCIC (rat: Tong et al. 2005).

In summary, considering that (1) noradrenaline and dopamine act as learning signals, and both neuromodulators are released at times of novelty and uncertainty (Harley 2004), and that (2) acetylcholine and serotonin mediate attention, their involvement in SSA sensitivity might be critical. Since SSA is a pre-attentive feature observed under anesthesia (rat: Malmierca et al. 2009), in awake (mouse: Duque and Malmierca 2014), and sleep-like states (rat: Nir et al. 2013), SSA is probably affected by the variations in the levels of neuromodulators occurring during these states. Thus, future studies of the various modulatory substances will undoubtedly shed light on the way that the brain learns to discriminate potentially relevant sounds (Edeline 2012).

### Neuronal mechanisms that might underlie SSA: synaptic depression and retrograde signaling

Since GABAergic inhibition plays a key role in modulating SSA rather than in its generation (Perez-Gonzalez et al. 2012; Duque et al. 2014), a synaptic depression model (Grill-Spector et al. 2006; Briley and Krumbholz 2013) might be a more likely explanation for SSA. In this model, the continuous activation of the same set of neurons will eventually produce a specific decrease of the neurotransmitter release at the presynaptic level, and consequently, the postsynaptic neuron will not generate a response.

The frequency-specific adaptation channel theory supports this model (Eytan et al. 2003; Mill et al. 2011a, 2011b; Taaseh et al. 2011; Nelken 2014) in which all the frequencies that are within the same frequency channel will not evoke SSA, because they are encoded by the same neurons. Although recent data from the rat AC (Hershenhoren et al. 2014) suggest other, as yet unknown, more complex mechanisms to explain SSA at the cortical level, in the IC, SSA is not constant within the neuronal receptive field of the neuron, and SSA sensitivity is stronger on the high-frequency edge of the receptive field (Duque et al. 2012). This phenomenon presents interesting correlates in the auditory nerve fibers (Westerman and Smith 1985) and the IC (Dean et al. 2008) in which adaptation is also more prominent at high frequencies. Together, these studies suggest that synaptic depression (Chung et al. 2002; Rothman et al. 2009) might explain subcortical SSA, as it is an input-specific mechanism, and neural responses depend upon the previous history of afferent firing (Abbott et al. 1997; Rothman et al. 2009).

Moreover, as various retrograde signaling pathways can act at the synaptic level (Regehr et al. 2009), synaptic depression does not necessarily have to be a passive phenomenon (i.e., fatigue). Retrograde signaling mediates short-term synaptic plasticity (Regehr 2012), a likely explanation for synaptic depression (Abbott and Regehr 2004): lipids (endocannabinoids), gases (nitric oxide), peptides (i.e., met-enkephalin and/or dynorphin), and conventional amino acid transmitters (i.e., glutamate and/or GABA) can be released in an activation-dependent manner by postsynaptic neurons and then act on the axon terminals of presynaptic neurons (Regehr et al. 2009). The production and release of these messengers is regulated by the activation of postsynaptic glutamatergic metabotropic receptors (Regehr et al. 2009) and/or by postsynaptic  $\text{Ca}^{2+}$  (de Jong and Verhage 2009), two components mainly located in the non-lemniscal regions of the IC and the MGB (see above). In the mammalian brain, the endocannabinoid signaling system is the best-characterized retrograde signaling pathway and enables neurons specifically to regulate the strength of their inputs in a retrograde manner (Wilson and Nicoll 2002; Freund and Hajos 2003; Kano et al. 2009). Endocannabinoid type-1 (CB1) receptors are thought to be one of the most widely expressed G-protein-coupled receptors in the brain (Herkenham et al. 1990). The presynaptic localization of CB1 receptors and their inhibitory effect on neurotransmitter release has been shown to be a general feature of most axon terminals in the central nervous system (Kano et al. 2009), suppressing synaptic strength for tens of seconds (Wilson et al. 2001). The firing evoked by the standard stimuli in an oddball paradigm can activate group I mGluR, thus inducing endocannabinoid release (Chevalyere et al. 2006) and contributing to short-term synaptic plasticity (Castillo et al. 2012), as in the fast adaptation occurring in the neuronal firing to the standard tone. Endocannabinoid signaling has been demonstrated to act in the auditory pathway at the level of the cochlear nucleus (Zhao et al. 2009; Zhao and Tzounopoulos 2011),



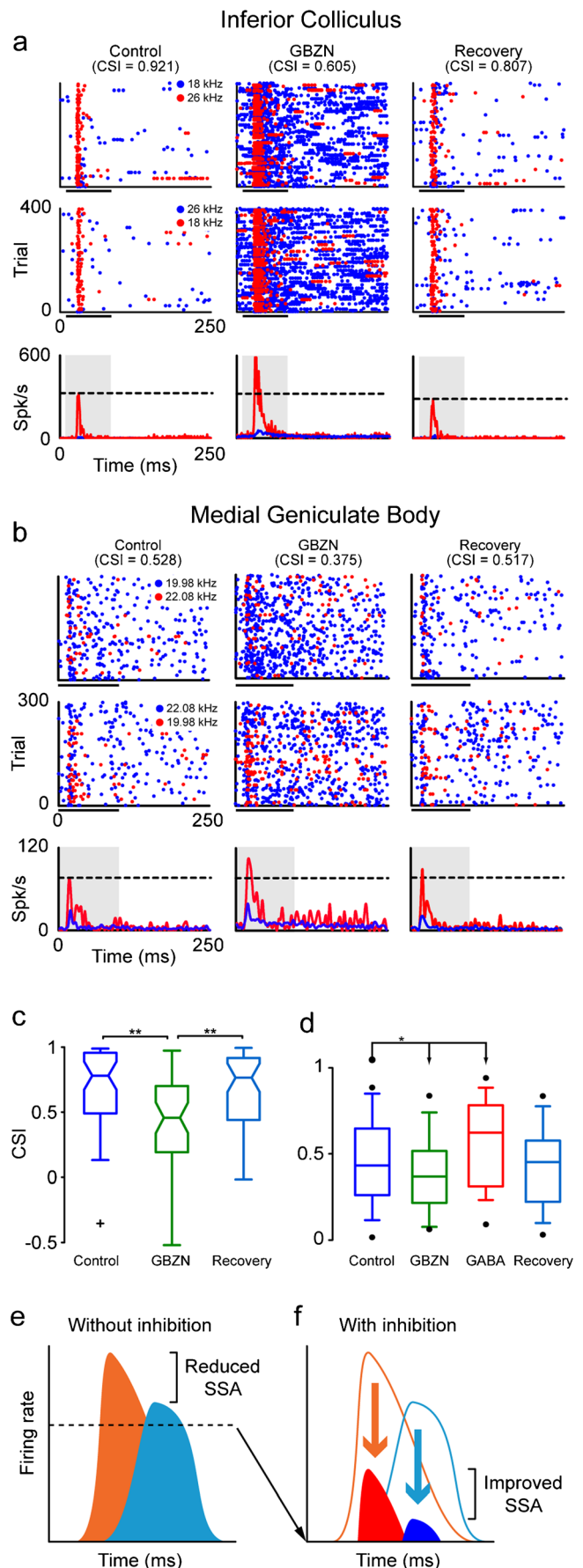
the superior olivary complex (Trattner et al. 2013), and the external cortex of the IC of the barn owl (Penzo and Pena 2009), but its affect on auditory SSA remains unknown.

Much less is known about other retrograde neurotransmitters. For example, the highest levels of nNOS (the neuronal enzyme that synthesizes nitric oxide) are evident in the DCIC and the LCIC, with much lower levels in the CNIC (Druga and Syka 1993; Paloff and Hinova-Palova 1998; Coote and Rees 2008). Few data are available for understanding the involvement of nNOS in the MGB. As another example, immunostaining for kappa ( $\kappa$ ) opioid receptors (dynorphin) is significantly higher in the LCIC, but delta ( $\delta$ ) opioid receptors (met-enkephalins) are similarly distributed within the IC (Aguilar et al. 2004; Tongjaroenbuangam et al. 2006). Thus, the distribution of the opioid receptors cannot be correlated with specific regions of the IC. The data regarding opioid receptor distribution in the MGB are also sparse and difficult to interpret. Lastly, we should mention the existence of extensive labeling for fibers with both somatostatin and substance-P in the DCIC and the LCIC, with somatostatin showing the most extensive encircling of the CNIC (Wynne and Robertson 1997). Interestingly, no significant fibers labeling for either peptide have been observed within the CNIC (Wynne and Robertson 1997). Unfortunately, the involvement of retrograde signaling in SSA remains unknown, and much work is needed to gain an understanding of the functions of these systems in sound discrimination.

### Detection of acoustic deviance in non-auditory nuclei

Beyond the auditory pathway, stronger neuronal responses to deviant sounds have also been found in some non-auditory

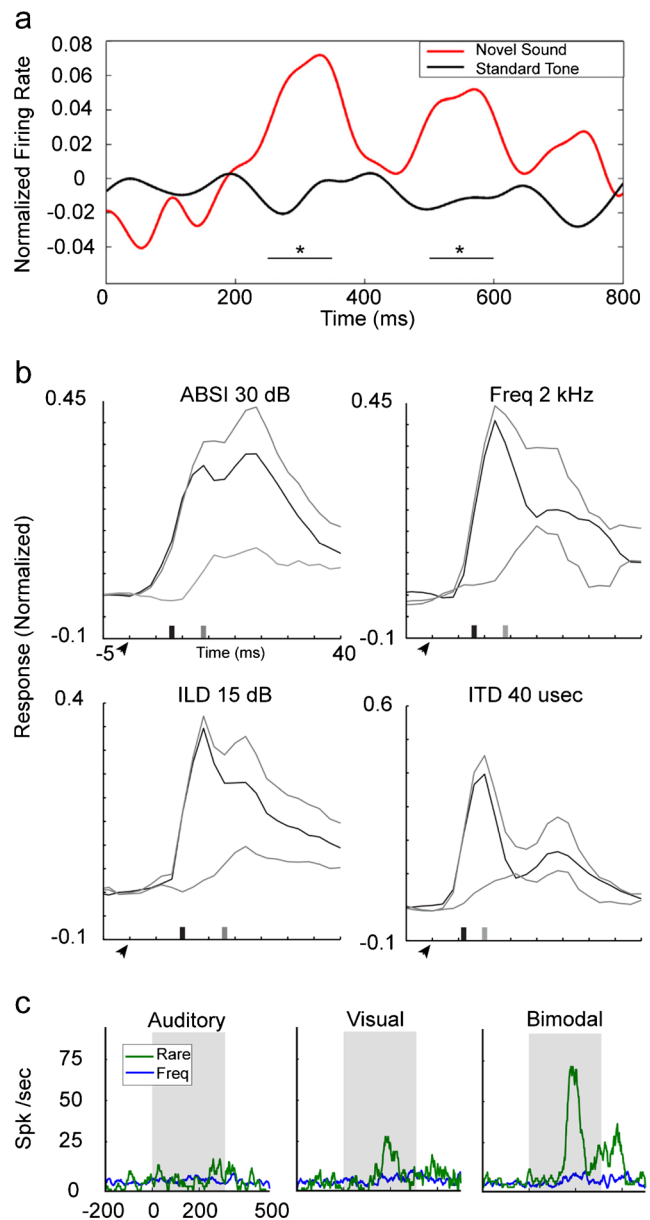
**Fig. 4** Effect of neuronal inhibition on the SSA responses in IC and MGB neurons. **a** *Dot raster plots* obtained after an oddball paradigm for a pair of frequencies in an IC neuron. The *dot rasters* refer to the control (*left*), gabazine (*GBZN*, *middle*), and recovery (*right*) conditions. Frequencies are shown as *insets* over the control condition. The *first row* shows  $f1/f2$  as a standard/deviant, whereas the *second row* shows the reverse condition ( $f2/f1$  as standard/deviant). The *black line* lying *under* the *dot rasters* represents the stimulus duration. Common SSA index (*CSI*) values are shown over each condition. The mean peristimulus time histograms from both *dot rasters* are shown in the *third row* (*Spk* spike). **b** *Dot raster plots* obtained after an oddball paradigm for a pair of frequencies in an MGB neuron. Same format as in **a**. **c** *Box plot* of the CSI values for the population of neurons of the IC before, during, and after the application of GBZN. **d** *Box plot* of the CSI values for the population of neurons of the MGB before, during, and after the application of GBZN and GABA. In both cases, *asterisks* indicate significant differences (Friedman test,  $P < 0.01$ ). **e** In the absence of inhibition, neurons respond to deviants (*orange*) and standards (*light blue*) with high firing rates, and thus the deviant to standard ratio is small. **f** Inhibition reduces the responses to both deviants (*red*) and standards (*dark blue*) increasing the deviant to standard ratio and thus enhancing SSA. **a, c, e, f:** modified from Perez-Gonzalez et al. (2012). **b, d:** modified from Duque et al. (2014)



nuclei, including the substantia nigra (Minks et al. 2014), hippocampus (Ruusuvirta et al. 1995b, 1995c), basal ganglia (Mikell et al. 2014), optic tectum (Reches and Gutfreund 2008), and thalamic reticular nucleus (Yu et al. 2009). As mentioned in the previous section, some of these nuclei have anatomical connections with the non-lemniscal auditory subdivisions.

The substantia nigra is typically involved in sensorimotor coordination. However, recently, a study in humans by Mikell et al. (2014) has demonstrated that novel sounds evoke a greater firing rate compared with the activity following standard tones in substantia nigra neurons. The response following the deviant presentations displays a biphasic temporal pattern with peaks at approximately 300 and 500 ms (Fig. 5a). Interestingly, an inverse correlation occurs between the firing rate and the strength of the novelty response across all recorded neurons, i.e., neurons sensitive to deviant stimulus exhibit slow firing, whereas neurons with the highest firing rates are suppressed by the novel stimuli. Mikell and colleagues (2014) speculate that the substantia nigra neurons that discriminate deviant and standard tones correspond to dopaminergic neurons, since previous studies indicate dopaminergic neurons are sensitive to novelty (Bunzeck and Düzel 2006). Moreover, the former authors further suggest that the other group of substantia nigra neurons with high and tonic firing rates suppressed by the deviant tone correspond to GABAergic interneurons that are known to inhibit the local dopaminergic neurons (Tepper et al. 1995). Interestingly, the response in the substantia nigra, i.e., the first peak of the increased activity following novel sounds (250–350 ms after stimulus onset), occurs concurrently with the onset of the hippocampally-dependent potential P300, a scalp-recorded potential linked to novelty detection. Notably, MMN-like responses to pitch (Ruusuvirta et al. 1995b, 1995c; 1996), duration (Rosburg et al. 2007; Ruusuvirta et al. 2013), and frequency deviants (Ruusuvirta et al. 2010) have been recorded across the hippocampus in animal studies. The hippocampus is associated with involuntary attention switches toward auditory changes of high magnitude. Ruusuvirta et al. (2013) have found that MMN responses to duration deviants are elicited across the three hippocampal areas, i.e., CA1, dentate gyrus, and subiculum in anesthetized rats. In a previous report from the same group (Ruusuvirta et al. 2010), higher amplitude local field potentials in response to frequency deviants have been recorded in the CA1 of awake animals. The MMN response to frequency and duration deviants occurs within a similar time window, at 36–80 and 51.5–89 ms post-stimulus, respectively.

Recently, other non-auditory nuclei have been implicated in acoustic deviance detection. The subthalamic nucleus is integrated into the basal ganglia system, and traditionally, it is considered to play a role in cortical motor control regulation



**Fig. 5** Response to acoustic deviants in non-auditory subcortical nuclei. **a** Normalized firing response of neurons of the substantia nigra. Novel sound evoked a greater response (red line) compared with standard tones (blue line) over the 250–350 ms interval and over 500–600 ms (black lines regions of  $*P < 0.05$ ; modified from Mikell et al. 2014). **b** Optic tectum neuronal SSA responses to average binaural sound intensity (ABSI, 30 dB gap), frequency (Freq, 2 kHz gap), interaural level difference (ILD, 15 dB gap), and interaural time difference (ITD, 40  $\mu$ s gap). Top gray line is the response to a rarely presented stimulus, black line the response to a frequently presented stimulus, bottom gray line the difference between the two, arrowheads stimulus onset, black ticks latency of the population response to the frequent stimulus, gray ticks latency of the difference signal (taken from Reches and Gutfreund 2008). **c** Entopallium neuronal responses to deviant occurrences (green lines) together with the corresponding responses to frequent occurrences (blue lines) of auditory, visual, and bimodal stimulus (modified from Reches et al. 2010)

(Rektor et al. 2001). Minks et al. (2014) have demonstrated that deviant pure tones elicit MMN-like responses in the

subthalamic nuclei by using intracranial electroencephalograph recordings in humans. The responses are evident in the far-field potentials (intracerebral electrodes referenced to the extracranial electrode) and near-field potentials (intracerebral contacts referenced to one another within the subthalamic nuclei) with a similar average time-to-peak, i.e., 202 and 214 ms, respectively.

SSA responses have been also found in the optic tectum, which is the avian homolog of the superior colliculus of mammals. The optic tectum is involved in orienting gaze toward salient stimuli and receives auditory inputs primarily from the cortices of the IC (Gutfreund 2012). In an elegant study performed by Reches and Gutfreund (2008), SSA responses to more than one acoustic feature, i.e., sound frequencies, amplitudes, and interaural and interlevel time difference, were found in the single- and multi-unit activity of the optic tectum neurons (Fig. 5b). All acoustic features elicited a similar pattern of adaptation developed several milliseconds after the onset of the response. Interestingly, neurons of the IC exhibited SSA only to sound frequency but showed a higher neuronal hyperacuity. These results led the authors to suggest that neurons in higher-level centers of the ascending gaze control system, such as the optic tectum where the IC neurons project to, encompass SSA to multiple acoustic features and not only to one single acoustic dimension as occurs in the IC of the barn owl.

The studies highlighted above clearly demonstrate that deviance detection is a widely distributed neuronal network that goes beyond the auditory pathway (Ranganath and Rainer 2003). At the same time, these studies lead to questions regarding the possibility of whether these neuronal structures play an active role in the genesis of deviance detection or simply reflect adaptive neuronal processes taking place at their projecting sources. To gain information in order to permit a direct comparison with the SSA studies, an interesting project would be to record the responses of a single neuron to various acoustic stimuli in the hippocampus, subthalamic nuclei, or superior colliculus under the same paradigms as those used in the auditory SSA studies (Ulanovsky et al. 2003; Malmierca et al. 2009; Yaron et al. 2012).

### Multisensory responses and deviance detection

Neurons showing SSA also participate in multisensory processing since information integrated across various sensory modalities can greatly enhance our ability to detect, discriminate, or respond to relevant sensory events (for reviews, see Stein and Meredith 1993; Gleiss and Kayser 2012). As described previously, the non-lemniscal subdivisions of the IC and MGB in which the strongest SSA responses are found receive afferent projections not only from auditory nuclei, but also from visual and somatosensory nuclei (Wu et al. 2014). Indeed, several studies indicate that other subcortical

nuclei involved in deviance detection also engage multimodal sensitivities. Neurons with multimodal sensitivity exhibit suprathreshold responses to stimuli from more than one sensory modality, and often the response of these neurons is stronger to combined stimuli than to the most effective single-modality stimulus (Meredith et al. 2012). Examples of auditory neurons whose sensitivity differs significantly when they are stimulated by bimodal (e.g., audiovisual) stimuli are summarized below. Yu et al. (2009) have found SSA responses in the thalamic reticular nucleus, a multimodal area mainly conformed by GABAergic neurons and have shown that MGB acoustic responses are modulated in a cross-modal manner by a preceding light stimulus. This modulation of the auditory responses is abolished by the inactivation of the thalamic reticular nucleus. Moreover, eye position has been demonstrated to modulate auditory responses as early as in the shell area of the IC of primates (Groh et al. 2001; for reviews, see Gruters and Groh 2012; Wu et al. 2014).

Likewise, other subcortical non-auditory structures that are particularly sensitive to deviant sound also exhibit multimodal sensitivities. Neurons in the substantia nigra are responsive to visual, auditory, and somatosensory stimulation (Nagy et al. 2005; Chudler et al. 1995) exhibiting multisensory response enhancements (Nagy et al. 2006). In the barn owl, optic tectum neurons show multisensory enhancement (Zahar et al. 2009) and SSA for visual stimuli, in addition to SSA for sound frequency deviants (Reches and Gutfreund 2008). Moreover, Reches et al. (2010) have performed a pioneering study demonstrating that a bimodal stimulus enhances the SSA responses of entopallium neurons, a forebrain structure of the barn owl (Fig. 5c). This enhancement occurs only when the auditory and visual stimuli are congruent in space and time (Reches et al. 2010). Whether the same multimodal enhancement of the auditory SSA responses occurs at early subcortical processing stages remains to be determined in future studies.

The superior colliculus is also of special interest for the exploration of SSA, because (1) the optic tectum (which is its avian homolog) encompasses SSA for multiple acoustic parameters and for visual stimulus (Reches and Gutfreund 2008) and (2) the basic principles of multisensory integration have been revealed in single-cell studies in the superior colliculus (Stein and Wallace 1996; Stein and Stanford 2008; Meredith et al. 2012). Interestingly, neurons of the superior colliculus of the anesthetized cat with little or no spontaneous activity and weak sensory responses have the ability to exhibit large multisensory response enhancements in comparison with the poor response enhancements exhibited by superior colliculus neurons with modest spontaneous activity and robust sensory responses (Perrault et al. 2003). The response features of the ongoing multisensory enhancement of the superior colliculus resemble the poor response of the IC neurons showing strong SSA (Duque et al. 2012) and those of substantia nigra neurons sensitive to deviant stimulation

(Mikell et al. 2014). Finally, the tegmental nucleus is another multisensory structure (Koyama et al. 1994; Reese et al. 1995) in which acoustic SSA is likely to occur (Schofield et al. 2011), since its neurons attenuate or even abolish their response to repetitive auditory stimulation (Koyama et al. 1994). Furthermore, tegmental nucleus neurons project to the IC and receive projections from the AC (Schofield 2010).

All the above-mentioned studies support the notion that the subcortical nuclei engaged in auditory deviance detection constitute a neuronal microcircuitry based on the convergence of inputs from various sensory modalities that might act as early integration centers to enhance deviance detection. This wealth of data sets forth a promising field in which to explore and determine whether subcortical neurons allow better deviance coding under multisensory compared with unimodal conditions.

### Final remarks

We have reviewed evidence of MMN-like and SSA responses occurring in the shell area of the IC and MGB and in non-auditory nuclei and suggest that they conform to a distributed subcortical network for deviance detection. Likewise, the topographic distribution of SSA in the shell areas of the IC and MGB suggests that the microcircuitry and neurochemistry of the non-lemniscal areas exert a critical role in the generation and modulation of SSA in these nuclei. Further studies combining physiological, anatomical, and molecular approaches will broaden our understanding of the microcircuits of SSA in the auditory and non-auditory nuclei. Moreover, these studies will contribute to the determination of the similar or different contribution of each nucleus to the processing of deviant sounds and to the triggering of the cascade of neuronal processes that allow animals to adapt rapidly to environmental changes.

### References

- Abbott LF, Regehr WG (2004) Synaptic computation. *Nature* 431:796–803
- Abbott LF, Varela JA, Sen K, Nelson SB (1997) Synaptic depression and cortical gain control. *Science* 275:220–224
- Abe T, Sugihara H, Nawa H, Shigemoto R, Mizuno N, Nakanishi S (1992) Molecular characterization of a novel metabotropic glutamate receptor mGluR5 coupled to inositol phosphate/Ca<sup>2+</sup> signal transduction. *J Biol Chem* 267:13361–13368
- Adams JC, Wenthold RJ (1979) Distribution of putative amino acid transmitters, choline acetyltransferase and glutamate decarboxylase in the inferior colliculus. *Neuroscience* 4:1947–1951
- Aguilar LA, Malmierca MS, Covenas R, Lopez-Poveda EA, Tramu G, Merchan M (2004) Immunocytochemical distribution of Met-enkephalin-Arg6-Gly7-Leu8 (Met-8) in the auditory system of the rat. *Hear Res* 187:111–121
- Aitkin LM, Prain SM (1974) Medial geniculate body: unit responses in the awake cat. *J Neurophysiol* 37:512–521
- Aitkin LM, Webster WR, Veale JL, Crosby DC (1975) Inferior colliculus. I. Comparison of response properties of neurons in central, pericentral, and external nuclei of adult cat. *J Neurophysiol* 38:1196–1207
- Aitkin LM, Dickhaus H, Schult W, Zimmermann M (1978) External nucleus of inferior colliculus: auditory and spinal somatosensory afferents and their interactions. *J Neurophysiol* 41:837–847
- Aitkin LM, Kenyon CE, Philpott P (1981) The representation of the auditory and somatosensory systems in the external nucleus of the cat inferior colliculus. *J Comp Neurol* 196:25–40
- Andersen RA, Knight PL, Merzenich MM (1980) The thalamocortical and corticothalamic connections of AI, AII, and the anterior auditory field (AAF) in the cat: evidence for two largely segregated systems of connections. *J Comp Neurol* 194:663–701
- Anderson LA, Linden JF (2011) Physiological differences between histologically defined subdivisions in the mouse auditory thalamus. *Hear Res* 274:48–60
- Anderson LA, Malmierca MS (2013) The effect of auditory cortex deactivation on stimulus-specific adaptation in the inferior colliculus of the rat. *Eur J Neurosci* 37:52–62
- Anderson LA, Christianson GB, Linden JF (2009) Stimulus-specific adaptation occurs in the auditory thalamus. *J Neurosci* 29:7359–7363
- Antunes FM, Malmierca MS (2011) Effect of auditory cortex deactivation on stimulus-specific adaptation in the medial geniculate body. *J Neurosci* 31:17306–17316
- Antunes FM, Nelken I, Covey E, Malmierca MS (2010) Stimulus-specific adaptation in the auditory thalamus of the anesthetized rat. *PLoS One* 5:e14071. doi:10.1371/journal.pone.0014071
- Aoki E, Semba R, Keino H, Kato K, Kashiwamata S (1988) Glycine-like immunoreactivity in the rat auditory pathway. *Brain Res* 442:63–71
- Astikainen P, Ruusuvirta T, Wikgren J, Penttonen M (2006) Memory-based detection of rare sound feature combinations in anesthetized rats. *Neuroreport* 17:1561–1564
- Astikainen P, Stefanics G, Nokia M, Lipponen A, Cong F, Penttonen M, Ruusuvirta T (2011) Memory-based mismatch response to frequency changes in rats. *PLoS One* 6:e24208. doi:10.1371/journal.pone.0024208
- Aston-Jones G (2004) Locus coeruleus, A5 and A7 noradrenergic cell groups. In: Paxinos G (ed) *The rat nervous system*, 3rd edn. Elsevier/Academic Press, San Diego, pp 259–294
- Ayala YA, Malmierca MS (2013) Stimulus-specific adaptation and deviance detection in the inferior colliculus. *Front Neural Circuits* 6:89. doi:10.3389/fncir.2012.00089
- Ayala YA, Perez-Gonzalez D, Duque D, Nelken I, Malmierca MS (2013) Frequency discrimination and stimulus deviance in the inferior colliculus and cochlear nucleus. *Front Neural Circuits* 6:119. doi:10.3389/fncir.2012.00119
- Banks MI, Smith PH (2011) Thalamocortical relations. In: Winer JA, Schreiner C (eds) *The auditory cortex*. Springer, New York, pp 75–97
- Bartlett EL, Smith PH (1999) Anatomic, intrinsic, and synaptic properties of dorsal and ventral division neurons in rat medial geniculate body. *J Neurophysiol* 81:1999–2016
- Bartlett EL, Smith PH (2002) Effects of paired-pulse and repetitive stimulation on neurons in the rat medial geniculate body. *Neuroscience* 113:957–974
- Bäuerle P, Behrens W von der, Kossl M, Gaese BH (2011) Stimulus-specific adaptation in the gerbil primary auditory thalamus is the result of a fast frequency-specific habituation and is regulated by the corticofugal system. *J Neurosci* 31:9708–9722

- Bendixen A, SanMiguel I, Schroger E (2012) Early electrophysiological indicators for predictive processing in audition: a review. *Int J Psychophysiol* 83:120–131
- Bordi F, LeDoux JE (1994a) Response properties of single units in areas of rat auditory thalamus that project to the amygdala. I. Acoustic discharge patterns and frequency receptive fields. *Exp Brain Res* 98:261–274
- Bordi F, LeDoux JE (1994b) Response properties of single units in areas of rat auditory thalamus that project to the amygdala. II. Cells receiving convergent auditory and somatosensory inputs and cells antidromically activated by amygdala stimulation. *Exp Brain Res* 98:275–286
- Bowery NG, Hill DR, Hudson AL (1983) Characteristics of GABAB receptor binding sites on rat whole brain synaptic membranes. *Br J Pharmacol* 78:191–206
- Briley PM, Krumbholz K (2013) The specificity of stimulus-specific adaptation in human auditory cortex increases with repeated exposure to the adapting stimulus. *J Neurophysiol* 110:2679–2688
- Bunzeck N, Düzel E (2006) Absolute coding of stimulus novelty in the human substantia nigra/VTA. *Neuron* 51:369–79
- Buran BN, Trapp G von, Sanes DH (2014) Behaviorally gated reduction of spontaneous discharge can improve detection thresholds in auditory cortex. *J Neurosci* 34:4076–4081
- Cacciaglia R, Escera C, Slabu L, Grimm S, Sanjuán A, Ventura-Campos N, Ávila C (2015) Involvement of the human midbrain and thalamus in auditory deviance detection. *Neuropsychologia* 68C:51–58
- Caicedo A, Eybalin M (1999) Glutamate receptor phenotypes in the auditory brainstem and mid-brain of the developing rat. *Eur J Neurosci* 11:51–74
- Caicedo A, Kungel M, Pujol R, Friauf E (1998) Glutamate-induced  $Co^{2+}$  uptake in rat auditory brainstem neurons reveals developmental changes in  $Ca^{2+}$  permeability of glutamate receptors. *Eur J Neurosci* 10:941–954
- Calford MB (1983) The parcellation of the medial geniculate body of the cat defined by the auditory response properties of single units. *J Neurosci* 3:2350–2364
- Calford MB, Aitkin LM (1983) Ascending projections to the medial geniculate body of the cat: evidence for multiple, parallel auditory pathways through thalamus. *J Neurosci* 3:2365–2380
- Cant NB, Benson CG (2003) Parallel auditory pathways: projection patterns of the different neuronal populations in the dorsal and ventral cochlear nuclei. *Brain Res Bull* 60:457–474
- Castillo PE, Younts TJ, Chavez AE, Hashimoto Y (2012) Endocannabinoid signaling and synaptic function. *Neuron* 76:70–81
- Champoux F, Tremblay C, Mercier C, Lassonde M, Lepore F, Gagné JP, Théoret H (2006) A role for the inferior colliculus in multisensory speech integration. *Neuroreport* 17:1607–1610
- Chernock ML, Larue DT, Winer JA (2004) A periodic network of neurochemical modules in the inferior colliculus. *Hear Res* 188:12–20
- Chevalyere V, Takahashi KA, Castillo PE (2006) Endocannabinoid-mediated synaptic plasticity in the CNS. *Annu Rev Neurosci* 29:37–76
- Christianson GB, Chait M, Cheveigne A de, Linden JF (2014) Auditory evoked fields measured non-invasively with small-animal MEG reveal rapid repetition suppression in the guinea pig. *J Neurophysiol* 112:3053–3065. doi:10.1152/jn.00189.2014
- Chudler EH, Sugiyama K, Dong WK (1995) Multisensory convergence and integration in the neostriatum and globus pallidus of the rat. *Brain Res* 674:33–45
- Chung S, Li X, Nelson SB (2002) Short-term depression at thalamocortical synapses contributes to rapid adaptation of cortical sensory responses in vivo. *Neuron* 34:437–446
- Coleman JR, Clerici WJ (1987) Sources of projections to subdivisions of the inferior colliculus in the rat. *J Comp Neurol* 262:215–226
- Coote EJ, Rees A (2008) The distribution of nitric oxide synthase in the inferior colliculus of guinea pig. *Neuroscience* 154:218–225
- Covey E, Carr CE (2005) The auditory midbrain in bats and birds. In: Winer JA, Schreiner CE (eds) *The inferior colliculus*. Springer, New York, pp 493–536
- Cruikshank SJ, Killackey HP, Metherate R (2001) Parvalbumin and calbindin are differentially distributed within primary and secondary subregions of the mouse auditory forebrain. *Neuroscience* 105:553–569
- Csepe V, Karmos G, Molnar M (1987a) Effects of signal probability on sensory evoked potentials in cats. *Int J Neurosci* 33:61–71
- Csepe V, Karmos G, Molnar M (1987b) Evoked potential correlates of stimulus deviance during wakefulness and sleep in cat—animal model of mismatch negativity. *Electroencephalogr Clin Neurophysiol* 66:571–578
- Dean I, Robinson BL, Harper NS, McAlpine D (2008) Rapid neural adaptation to sound level statistics. *J Neurosci* 28:6430–6438
- Doron NN, Ledoux JE (1999) Organization of projections to the lateral amygdala from auditory and visual areas of the thalamus in the rat. *J Comp Neurol* 412:383–409
- Doron NN, Ledoux JE (2000) Cells in the posterior thalamus project to both amygdala and temporal cortex: a quantitative retrograde double-labeling study in the rat. *J Comp Neurol* 425:257–274
- Druga R, Syka J (1993) NADPH-diaphorase activity in the central auditory structures of the rat. *Neuroreport* 4:999–1002
- Duque D, Malmierca MS (2014) Stimulus-specific adaptation in the inferior colliculus of the mouse: anesthesia and spontaneous activity effects. *Brain Struct Funct*. doi:10.1007/s00429-014-0862-1
- Duque D, Perez-Gonzalez D, Ayala YA, Palmer AR, Malmierca MS (2012) Topographic distribution, frequency, and intensity dependence of stimulus-specific adaptation in the inferior colliculus of the rat. *J Neurosci* 32:17762–17774
- Duque D, Malmierca MS, Caspary DM (2014) Modulation of stimulus-specific adaptation by GABAA receptor activation or blockade in the medial geniculate body of the anesthetized rat. *J Physiol (Lond)* 592:729–743
- Edeline JM (2012) Beyond traditional approaches to understanding the functional role of neuromodulators in sensory cortices. *Front Behav Neurosci* 30:6–45. doi:10.3389/fnbeh.2012.00045
- Edeline JM, Weinberger NM (1991) Subcortical adaptive filtering in the auditory system: associative receptive field plasticity in the dorsal medial geniculate body. *Behav Neurosci* 105:154–175
- Escera C, Malmierca MS (2014) The auditory novelty system: an attempt to integrate human and animal research. *Psychophysiology* 51:111–123
- Eytan D, Brenner N, Marom S (2003) Selective adaptation in networks of cortical neurons. *J Neurosci* 23:9349–9356
- Fishman YI (2013) The mechanisms and meaning of the mismatch negativity. *Brain Topogr* 27:500–526
- Fishman YI, Steinschneider M (2010) Formation of auditory streams. In: Rees A, Palmer AR (eds) *The Oxford handbook of auditory science: auditory brain*. Oxford University Press, New York, pp 215–245
- Fishman YI, Steinschneider M (2012) Searching for the mismatch negativity in primary auditory cortex of the awake monkey: deviance detection or stimulus specific adaptation? *J Neurosci* 32:15747–15758
- Foote SL, Bloom FE, Aston-Jones G (1983) Nucleus locus ceruleus: new evidence of anatomical and physiological specificity. *Physiol Rev* 63:844–914
- Freund TF, Hajos N (2003) Excitement reduces inhibition via endocannabinoids. *Neuron* 38:362–365
- Friauf E, Hammerschmidt B, Kirsch J (1997) Development of adult-type inhibitory glycine receptors in the central auditory system of rats. *J Comp Neurol* 385:117–134
- Friston K (2005) A theory of cortical responses. *Philos Trans R Soc Lond B Biol Sci* 360:815–86
- Friston K (2009) The free-energy principle: a rough guide to the brain. *Trends Cogn Sci* 13:293–301

- Friston K (2012) Prediction, perception and agency. *Int J Psychophysiol* 83:248–252
- Fritz J, Shamma S, Elhilali M, Klein D (2003) Rapid task-related plasticity of spectrotemporal receptive fields in primary auditory cortex. *Nat Neurosci* 6:1216–1223
- Fritz JB, Elhilali M, David SV, Shamma SA (2007) Auditory attention—focusing the searchlight on sound. *Curr Opin Neurobiol* 17:437–455
- Fubara BM, Casseday JH, Covey E, Schwartz-Bloom RD (1996) Distribution of GABAA, GABAB, and glycine receptors in the central auditory system of the big brown bat, *Eptesicus fuscus*. *J Comp Neurol* 369:83–92
- Gaza WC, Ribak CE (1997) Immunocytochemical localization of AMPA receptors in the rat inferior colliculus. *Brain Res* 774:175–183
- Ghazanfar AA, Maier JX, Hoffman KL, Logothetis NK (2005) Multisensory integration of dynamic faces and voices in rhesus monkey auditory cortex. *J Neurosci* 25:5004–5012
- Gittelman JX, Perkel DJ, Portfors CV (2013) Dopamine modulates auditory responses in the inferior colliculus in a heterogeneous manner. *J Assoc Res Otolaryngol* 14:719–729
- Gleiss S, Kayser C (2012) Audio-visual detection benefits in the rat. *PLoS One* 7:e45677. doi:10.1371/journal.pone.0045677
- Graybiel AM (1972) Some ascending connections of the pulvinar and nucleus lateralis posterior of the thalamus in the cat. *Brain Res* 44:99–125
- Grill-Spector K, Henson R, Martin A (2006) Repetition and the brain: neural models of stimulus-specific effects. *Trends Cogn Sci* 10:14–23
- Groh JM, Trause AS, Underhill AM, Clark KR, Inati S (2001) Eye position influences auditory responses in primate inferior colliculus. *Neuron* 29:509–518
- Gruters KG, Groh JM (2012) Sounds and beyond: multisensory and other non-auditory signals in the inferior colliculus. *Front Neural Circuits* 6:96. doi:10.3389/fncir.2012.00096
- Gutfreund Y (2012) Stimulus-specific adaptation, habituation and change detection in the gaze control system. *Biol Cybern* 106:657–668
- Hari R, Hamalainen M, Ilmoniemi R, Kaukoranta E, Reinikainen K, Salminen J, Alho K, Naatanen R, Sams M (1984) Responses of the primary auditory cortex to pitch changes in a sequence of tone pips: neuromagnetic recordings in man. *Neurosci Lett* 50:127–132
- Harley CW (2004) Norepinephrine and dopamine as learning signals. *Neural Plast* 11:191–204
- Harms L, Fulham WR, Todd J, Budd TW, Hunter M, Meehan C, Penttonen M, Schall U, Zavitsanou K, Hodgson DM, Michie PT (2014) Mismatch negativity (MMN) in freely-moving rats with several experimental controls. *PLoS One* 9:e110892. doi:10.1371/journal.pone.0110892
- He J, Hu B (2002) Differential distribution of burst and single-spike responses in auditory thalamus. *J Neurophysiol* 88:2152–2156
- Herbert H, Klepper A, Ostwald J (1997) Afferent and efferent connections of the ventrolateral tegmental area in the rat. *Anat Embryol (Berl)* 196:235–259
- Herkenham M, Lynn AB, Little MD, Johnson MR, Melvin LS, Costa BR de, Rice KC (1990) Cannabinoid receptor localization in brain. *Proc Natl Acad Sci U S A* 87:1932–1936
- Hershenhoren I, Taaseh N, Antunes FM, Nelken I (2014) Intracellular correlates of stimulus-specific adaptation. *J Neurosci* 34:3303–3319
- Hormigo S, Horta Junior Jde A, Gomez-Nieto R, Lopez DE (2012) The selective neurotoxin DSP-4 impairs the noradrenergic projections from the locus coeruleus to the inferior colliculus in rats. *Front Neural Circuits* 6:41. doi:10.3389/fncir.2012.00041
- Hu B (2003) Functional organization of lemniscal and nonlemniscal auditory thalamus. *Exp Brain Res* 153:543–549
- Hu B, Senatorov V, Mooney D (1994) Lemniscal and non-lemniscal synaptic transmission in rat auditory thalamus. *J Physiol (Lond)* 479:217–231
- Huang CL, Winer JA (2000) Auditory thalamocortical projections in the cat: laminar and areal patterns of input. *J Comp Neurol* 427:302e331
- Hurley LM, Pollak GD (2005) Serotonin shifts first-spike latencies of inferior colliculus neurons. *J Neurosci* 25:7876–7886
- Hurley LM, Sullivan MR (2012) From behavioral context to receptors: serotonergic modulatory pathways in the IC. *Front Neural Circuits* 6:58. doi:10.3389/fncir.2012.00058
- Hurley LM, Thompson AM, Pollak GD (2002) Serotonin in the inferior colliculus. *Hear Res* 168:1–11
- Itaya SK, Van Hoesen GW (1982) Retinal innervation of the inferior colliculus in rat and monkey. *Brain Res* 233:45–52
- Ito T, Bishop DC, Oliver DL (2011) Expression of glutamate and inhibitory amino acid vesicular transporters in the rodent auditory brainstem. *J Comp Neurol* 519:316–340
- Iwata K, Kenshalo DR Jr, Dubner R, Nahin RL (1992) Diencephalic projections from the superficial and deep laminae of the medullary dorsal horn in the rat. *J Comp Neurol* 321:404–420
- Jaaskelainen IP, Ahveninen J, Bonmassar G, Dale AM, Ilmoniemi RJ, Levanen S, Lin FH, May P, Melcher J, Stufflebeam S, Tiitinen H, Belliveau JW (2004) Human posterior auditory cortex gates novel sounds to consciousness. *Proc Natl Acad Sci U S A* 101:6809–6814
- Jacobsen T, Schröger E (2003) Measuring duration mismatch negativity. *Clin Neurophysiol* 114:1133–1143
- Jain R, Shore S (2006) External inferior colliculus integrates trigeminal and acoustic information: unit responses to trigeminal nucleus and acoustic stimulation in the guinea pig. *Neurosci Lett* 395:71–75
- Jamal L, Zhang H, Finlayson PG, Porter LA, Zhang H (2011) The level and distribution of the GABA(B)R2 receptor subunit in the rat's central auditory system. *Neuroscience* 181:243–256
- Jamal L, Khan AN, Butt S, Patel CR, Zhang H (2012) The level and distribution of the GABA(B)R1 and GABA(B)R2 receptor subunits in the rat's inferior colliculus. *Front Neural Circuits* 6:92. doi:10.3389/fncir.2012.00092
- Javitt DC, Schroeder CE, Steinschneider M, Arezzo JC, Vaughan HG Jr (1992) Demonstration of mismatch negativity in the monkey. *Electroencephalogr Clin Neurophysiol* 83:87–90
- Javitt DC, Steinschneider M, Schroeder CE, Vaughan HG Jr, Arezzo JC (1994) Detection of stimulus deviance within primate primary auditory cortex: intracortical mechanisms of mismatch negativity (MMN) generation. *Brain Res* 667:192–200
- Ji W, Gao E, Suga N (2001) Effects of acetylcholine and atropine on plasticity of central auditory neurons caused by conditioning in bats. *J Neurophysiol* 86:211–225
- Jones BE (2005) From waking to sleeping: neuronal and chemical substrates. *Trends Pharmacol Sci* 26:578–586
- Jones EG (2003) Chemically defined parallel pathways in the monkey auditory system. *Ann N Y Acad Sci* 999:218–233
- Jong AP de, Verhage M (2009) Presynaptic signal transduction pathways that modulate synaptic transmission. *Curr Opin Neurobiol* 19:245–253
- Jung F, Stephan KE, Backes H, Moran R, Gramer M, Kumagai T, Graf R, Endepols H, Tittgemeyer M (2013) Mismatch responses in the awake rat: evidence from epidural recordings of auditory cortical fields. *PLoS One* 8:e63203. doi:10.1371/journal.pone.0063203
- Kano M, Ohno-Shosaku T, Hashimoto Y, Uchigashima M, Watanabe M (2009) Endocannabinoid-mediated control of synaptic transmission. *Physiol Rev* 89:309–380
- Kayser C, Logothetis NK (2007) Do early sensory cortices integrate cross-modal information? *Brain Struct Funct* 212:121–132
- Kayser C, Petkov CI, Remedios R, Logothetis NK (2012) Multisensory influences on auditory processing: perspectives from fMRI and electrophysiology. In: Murray MM, Wallace MT (eds) *The neural bases of multisensory processes*. CRC Press, Boca Raton, pp 99–114
- Kelly JB (1973) The effects of insular and temporal lesions in cats on two types of auditory pattern discrimination. *Brain Res* 62:71–87

- Kelly J, Caspary D (2005) Pharmacology of the inferior colliculus. In: Winer J, Schreiner CE (eds) *The inferior colliculus*. Springer, New York, pp 248–281
- Kelly JB, Zhang H (2002) Contribution of AMPA and NMDA receptors to excitatory responses in the inferior colliculus. *Hear Res* 168:35–42
- King AJ, Walker KM (2012) Integrating information from different senses in the auditory cortex. *Biol Cybern* 106:617–25
- King AJ, Jiang ZD, Moore DR (1998) Auditory brainstem projections to the ferret superior colliculus: anatomical contribution to the neural coding of sound azimuth. *J Comp Neurol* 390:342–365
- Klepper A, Herbert H (1991) Distribution and origin of noradrenergic and serotonergic fibers in the cochlear nucleus and inferior colliculus of the rat. *Brain Res* 557:190–201
- Komura Y, Tamura R, Uwano T, Nishijo H, Kaga K, Ono T (2001) Retrospective and prospective coding for predicted reward in the sensory thalamus. *Nature* 412:546–549
- Koyama Y, Jodo E, Kayama Y (1994) Sensory responsiveness of “broad-spike” neurons in the laterodorsal tegmental nucleus, locus coeruleus and dorsal raphe of awake rats: implications for cholinergic and monoaminergic neuron-specific responses. *Neuroscience* 63:1021–1031
- Kraus N, McGee T, Carrell T, King C, Littman T, Nicol T (1994a) Discrimination of speech-like contrasts in the auditory thalamus and cortex. *J Acoust Soc Am* 96:2758–2768
- Kraus N, McGee T, Littman T, Nicol T, King C (1994b) Nonprimary auditory thalamic representation of acoustic change. *J Neurophysiol* 72:1270–1277
- Kudo M, Niimi K (1980) Ascending projections of the inferior colliculus in the cat: an autoradiographic study. *J Comp Neurol* 191:545–556
- Lakatos P, Chen CM, O’Connell MN, Mills A, Schroeder CE (2007) Neuronal oscillations and multisensory interaction in primary auditory cortex. *Neuron* 53:279–292
- Lavoie B, Parent A (1991) Serotonergic innervation of the thalamus in the primate: an immunohistochemical study. *J Comp Neurol* 312:1–18. doi:10.1002/cne.903120102
- Layton BS, Toga AW, Horenstein S, Davenport DG (1979) Temporal pattern discrimination survives simultaneous bilateral ablation of suprasylvian cortex but not sequential bilateral ablation of insular-temporal cortex in the cat. *Brain Res* 173:337–340
- LeDoux JE, Ruggiero DA, Forest R, Stornetta R, Reis DJ (1987) Topographic organization of convergent projections to the thalamus from the inferior colliculus and spinal cord in the rat. *J Comp Neurol* 264:123–146
- Lee CC, Sherman SM (2010) Topography and physiology of ascending streams in the auditory tectothalamic pathway. *Proc Natl Acad Sci U S A* 107:372–377
- Lee CC, Sherman SM (2011) On the classification of pathways in the auditory midbrain, thalamus, and cortex. *Hear Res* 276:79–87
- Lee CC, Winer JA (2011) Convergence of thalamic and cortical pathways in cat auditory cortex. *Hear Res* 274:85–94
- Lennartz RC, Weinberger NM (1992) Frequency selectivity is related to temporal processing in parallel thalamocortical auditory pathways. *Brain Res* 583:81–92
- Li Y, Evans MS, Faingold CL (1998) In vitro electrophysiology of neurons in subnuclei of rat inferior colliculus. *Hear Res* 121:1–10
- Li Y, Evans MS, Faingold CL (1999) Synaptic response patterns of neurons in the cortex of rat inferior colliculus. *Hear Res* 137:15–28
- Loftus WC, Malmierca MS, Bishop DC, Oliver DL (2008) The cytoarchitecture of the inferior colliculus revisited: a common organization of the lateral cortex in rat and cat. *Neuroscience* 154:196–205
- Loftus WC, Bishop DC, Oliver DL (2010) Differential patterns of inputs create functional zones in central nucleus of inferior colliculus. *J Neurosci* 30:13396–13408
- Lohmann C, Friauf E (1996) Distribution of the calcium-binding proteins parvalbumin and calretinin in the auditory brainstem of adult and developing rats. *J Comp Neurol* 367:90–109
- Lu Y, Jen PH (2001) GABAergic and glycinergic neural inhibition in excitatory frequency tuning of bat inferior collicular neurons. *Exp Brain Res* 141:331–339
- Lumani A, Zhang H (2010) Responses of neurons in the rat’s dorsal cortex of the inferior colliculus to monaural tone bursts. *Brain Res* 1351:115–129
- Ma CL, Kelly JB, Wu SH (2002) AMPA and NMDA receptors mediate synaptic excitation in the rat’s inferior colliculus. *Hear Res* 168:25–34
- Maess B, Jacobsen T, Schroger E, Friederici AD (2007) Localizing pre-attentive auditory memory-based comparison: magnetic mismatch negativity to pitch change. *Neuroimage* 37:561–571
- Malmierca MS, Hackett TA (2010) Structural organization of the ascending auditory pathway. In: Rees A, Palmer AR (eds) *The Oxford handbook of auditory science: auditory brain*. Oxford University Press, New York, pp 9–41
- Malmierca MS, Seip KL, Osen KK (1995) Morphological classification and identification of neurons in the inferior colliculus: a multivariate analysis. *Anat Embryol (Berl)* 191:343–350
- Malmierca MS, Izquierdo MA, Cristaudo S, Hernandez O, Perez-Gonzalez D, Covey E, Oliver DL (2008) A discontinuous tonotopic organization in the inferior colliculus of the rat. *J Neurosci* 28:4767–4776
- Malmierca MS, Cristaudo S, Perez-Gonzalez D, Covey E (2009) Stimulus-specific adaptation in the inferior colliculus of the anesthetized rat. *J Neurosci* 29:5483–5493
- Malmierca MS, Blackstad TW, Osen KK (2011) Computer-assisted 3-D reconstructions of Golgi-impregnated neurons in the cortical regions of the inferior colliculus of rat. *Hear Res* 274:13–26
- Manunta Y, Edeline JM (2004) Noradrenergic induction of selective plasticity in the frequency tuning of auditory cortex neurons. *J Neurophysiol* 92:1445–1463
- Mascetti GG, Strozzi L (1988) Visual cells in the inferior colliculus of the cat. *Brain Res* 442:387–390
- May PJ, Tiitinen H (2010) Mismatch negativity (MMN), the deviance-elicited auditory deflection, explained. *Psychophysiology* 47:66–122
- McCormick DA, Pape HC (1990) Noradrenergic and serotonergic modulation of a hyperpolarization-activated cation current in thalamic relay neurones. *J Physiol (Lond)* 431:319–342
- Merchan M, Aguilar LA, Lopez-Poveda EA, Malmierca MS (2005) The inferior colliculus of the rat: quantitative immunocytochemical study of GABA and glycine. *Neuroscience* 136:907–925
- Meredith MA, Allman BL, Keniston LP, Clemo HR (2012) Are bimodal neurons the same throughout the brain? In: Murray MM, Wallace MT (eds) *The neural bases of multisensory processes*. CRC Press, Boca Raton, <http://www.ncbi.nlm.nih.gov/books/NBK92874/>
- Metherate R, Weinberger NM (1989) Acetylcholine produces stimulus-specific receptive field alterations in cat auditory cortex. *Brain Res* 480:372–377
- Metherate R, Intskirveli I, Kawai HD (2012) Nicotinic filtering of sensory processing in auditory cortex. *Front Behav Neurosci* 6:44. doi:10.3389/fnbeh.2012.00044
- Mikell CB, Sheehy JP, Youngerman BE, McGovern RA, Wojtasiewicz TJ, Chan AK, Pullman SL, Yu Q, Goodman RR, Schevon CA, McKhann GM 2nd (2014) Features and timing of the response of single neurons to novelty in the substantia nigra. *Brain Res* 1542:79–84
- Mill R, Coath M, Wennekers T, Denham SL (2011a) Abstract stimulus-specific adaptation models. *Neural Comput* 23:435–476
- Mill R, Coath M, Wennekers T, Denham SL (2011b) A neurocomputational model of stimulus-specific adaptation to odd-ball and Markov sequences. *PLoS Comput Biol* 7:e1002117

- Miller LM, Escabi MA, Read HL, Schreiner CE (2001) Functional convergence of response properties in the auditory thalamocortical system. *Neuron* 32:151–160
- Minks E, Jurák P, Chládek J, Chrastina J, Halámek J, Shaw DJ, Bareš M (2014) Mismatch negativity-like potential (MMN-like) in the subthalamic nuclei in Parkinson's disease patients. *J Neural Transm* 121:1507–1522. doi:10.1007/s00702-014-1221-3
- Molinari M, Dell'Anna ME, Rausell E, Leggio MG, Hashikawa T, Jones EG (1995) Auditory thalamocortical pathways defined in monkeys by calcium-binding protein immunoreactivity. *J Comp Neurol* 362:171–194
- Monaghan DT, Cotman CW (1985) Distribution of N-methyl-D-aspartate-sensitive L-[3H]glutamate-binding sites in rat brain. *J Neurosci* 5:2909–2919
- Monckton JE, McCormick DA (2002) Neuromodulatory role of serotonin in the ferret thalamus. *J Neurophysiol* 87:2124–2136
- Moore RY, Bloom FE (1979) Central catecholamine neuron systems: anatomy and physiology of the norepinephrine and epinephrine systems. *Annu Rev Neurosci* 2:113–168
- Moran RJ, Campo P, Symmonds M, Stephan KE, Dolan RJ, Friston KJ (2013) Free energy, precision and learning: the role of cholinergic neuromodulation. *J Neurosci* 33:8227–8236
- Morris RG (2013) NMDA receptors and memory encoding. *Neuropharmacology* 74:32–40
- Movshon JA, Lennie P (1979) Pattern-selective adaptation in visual cortical neurons. *Nature* 278:850–852
- Näätänen R, Gaillard AW, Mantysalo S (1978) Early selective-attention effect on evoked potential reinterpreted. *Acta Psychol (Amst)* 42:313–329
- Näätänen R, Tervaniemi M, Sussman E, Paavilainen P, Winkler I (2001) "Primitive intelligence" in the auditory cortex. *Trends Neurosci* 24:283–288
- Nagy A, Paróczy Z, Norita M, Benedek G (2005) Multisensory responses and receptive field properties of neurons in the substantia nigra and in the caudate nucleus. *Eur J Neurosci* 22:419–424
- Nagy A, Eördegh G, Paróczy Z, Márkus Z, Benedek G (2006) Multisensory integration in the basal ganglia. *Eur J Neurosci* 24:917–924
- Nakamura T, Michie PT, Fulham WR, Todd J, Budd TW, Schall U, Hunter M, Hodgson DM (2011) Epidural auditory event-related potentials in the rat to frequency and duration deviants: evidence of mismatch negativity? *Front Psychol* 2:367. doi:10.3389/fpsyg.2011.00367
- Nelken I (2014) Stimulus-specific adaptation and deviance detection in the auditory system: experiments and models. *Biol Cybern* 108:655–663. doi:10.1007/s00422-014-0585-7
- Nelken I, Ulanovsky N (2007) Mismatch negativity and stimulus-specific adaptation in animal models. *J Psychophysiol* 21:214–223
- Nir Y, Vyazovskiy VV, Cirelli C, Banks MI, Tononi G (2013) Auditory responses and stimulus-specific adaptation in rat auditory cortex are preserved across NREM and REM sleep. *Cereb Cortex*. doi:10.1093/cercor/bht328
- Olazabal UE, Moore JK (1989) Nigrotectal projection to the inferior colliculus: horseradish peroxidase transport and tyrosine hydroxylase immunohistochemical studies in rats, cats, and bats. *J Comp Neurol* 282:98–118
- Oliver DL (2005) Neuronal organization in the inferior colliculus. In: Schreiner CE, Winer JA (eds) *The inferior colliculus*. New York, Springer, pp 69–131
- Oliver DL, Huerta MF (1992) Inferior and superior colliculi. In: Webster DB, Popper AN, Fay RR (eds) *Springer handbook of auditory research, vol 1. The mammalian auditory pathway: neuroanatomy*. Springer, New York, pp 168–221
- Opitz B, Schröger E, Cramon DY von (2005) Sensory and cognitive mechanisms for preattentive change detection in auditory cortex. *Eur J Neurosci* 21:531–535
- Ouda L, Syka J (2012) Immunocytochemical profiles of inferior colliculus neurons in the rat and their changes with aging. *Front Neural Circuits* 6:68. doi:10.3389/fncir.2012.00068
- Paloff AM, Hinova-Palova DV (1998) Topographical distribution of NADPH-diaphorase positive neurons in the cat's inferior colliculus. *J Hirnforsch* 39:231–243
- Paloff AM, Usunoff KG (2000) Tyrosine hydroxylase-like immunoreactive synaptic boutons in the inferior colliculus of the cat. *Ann Anat* 182:423–426
- Pape HC, McCormick DA (1989) Noradrenaline and serotonin selectively modulate thalamic burst firing by enhancing a hyperpolarization-activated cation current. *Nature* 340:715–718
- Parks TN (2000) The AMPA receptors of auditory neurons. *Hear Res* 147:77–91
- Penzo MA, Pena JL (2009) Endocannabinoid-mediated long-term depression in the avian midbrain expressed presynaptically and postsynaptically. *J Neurosci* 29:4131–4139
- Perez-Gonzalez D, Malmierca MS, Covey E (2005) Novelty detector neurons in the mammalian auditory midbrain. *Eur J Neurosci* 22:2879–2885
- Perez-Gonzalez D, Hernandez O, Covey E, Malmierca MS (2012) GABA(A)-mediated inhibition modulates stimulus-specific adaptation in the inferior colliculus. *PLoS One* 7:e34297. doi:10.1371/journal.pone.0034297
- Perrault TJ Jr, Vaughan JW, Stein BE, Wallace MT (2003) Neuron-specific response characteristics predict the magnitude of multisensory integration. *J Neurophysiol* 90:4022–4026
- Peruzzi D, Bartlett E, Smith PH, Oliver DL (1997) A monosynaptic GABAergic input from the inferior colliculus to the medial geniculate body in rat. *J Neurosci* 17:3766–3777
- Petralia RS, Wenthold RJ (1992) Light and electron immunocytochemical localization of AMPA-selective glutamate receptors in the rat brain. *J Comp Neurol* 318:329–354
- Petralia RS, Yokotani N, Wenthold RJ (1994) Light and electron microscope distribution of the NMDA receptor subunit NMDAR1 in the rat nervous system using a selective anti-peptide antibody. *J Neurosci* 14:667–696
- Pincze Z, Lakatos P, Rajkai C, Ulbert I, Karmos G (2001) Separation of mismatch negativity and the N1 wave in the auditory cortex of the cat: a topographic study. *Clin Neurophysiol* 112:778–784
- Pincze Z, Lakatos P, Rajkai C, Ulbert I, Karmos G (2002) Effect of deviant probability and interstimulus/interdeviant interval on the auditory N1 and mismatch negativity in the cat auditory cortex. *Brain Res Cogn Brain Res* 13:249–253
- Ranganath C, Rainer G (2003) Neural mechanisms for detecting and remembering novel events. *Nat Rev Neurosci* 4:193–202
- Reches A, Gutfreund Y (2008) Stimulus-specific adaptation in the gaze control system of the barn owl. *J Neurosci* 28:1523–1533
- Reches A, Netser S, Gutfreund Y (2010) Interactions between stimulus-specific adaptation and visual auditory integration in the forebrain of the barn owl. *J Neurosci* 30:6991–6998
- Reese NB, Garcia-Rill E, Skinner RD (1995) Auditory input to the pedunculo-pontine nucleus. II. Unit responses. *Brain Res Bull* 37:265–273
- Regehr WG (2012) Short-term presynaptic plasticity. *Cold Spring Harb Perspect Biol* 4:a005702. doi:10.1101/cshperspect.a005702
- Regehr WG, Carey MR, Best AR (2009) Activity-dependent regulation of synapses by retrograde messengers. *Neuron* 63:154–170
- Rektor I, Bares M, Kubová D (2001) Movement-related potentials in the basal ganglia: a SEEG readiness potential study. *Clin Neurophysiol* 112:2146–2153
- Richardson BD, Ling LL, Uteshev VV, Caspary DM (2011) Extrasynaptic GABA(A) receptors and tonic inhibition in rat auditory thalamus. *PLoS One* 6:e16508. doi:10.1371/journal.pone.0016508



- Romand R, Ehret G (1990) Development of tonotopy in the inferior colliculus. I. Electrophysiological mapping in house mice. *Brain Res Dev Brain Res* 54:221–234
- Rosburg T, Trautner P, Ludowig E, Schaller C, Kurthen M, Elger CE, Boutros NN (2007) Hippocampal event-related potentials to tone duration deviance in a passive oddball paradigm in humans. *Neuroimage* 37:274–281
- Rothman JS, Cathala L, Steuber V, Silver RA (2009) Synaptic depression enables neuronal gain control. *Nature* 457:1015–1018
- Rouiller EM, Colomb E, Capt M, De Ribaupierre F (1985) Projections of the reticular complex of the thalamus onto physiologically characterized regions of the medial geniculate body. *Neurosci Lett* 53:227–232
- Ruusuvirta T, Korhonen T, Penttonen M, Arikoski J (1995a) Hippocampal evoked potentials to pitch deviances in an auditory oddball situation in the rabbit: no human mismatch-like dependence on standard stimuli. *Neurosci Lett* 185:123–126
- Ruusuvirta T, Korhonen T, Penttonen M, Arikoski J, Kivirikko K (1995b) Behavioral and hippocampal evoked responses in an auditory oddball situation when an unconditioned stimulus is paired with deviant tones in the cat: experiment II. *Int J Psychophysiol* 20:41–47
- Ruusuvirta T, Korhonen T, Penttonen M, Arikoski J, Kivirikko K (1995c) Hippocampal event-related potentials to pitch deviances in an auditory oddball situation in the cat: experiment I. *Int J Psychophysiol* 20:33–39
- Ruusuvirta T, Korhonen T, Arikoski J, Kivirikko K (1996) ERPs to pitch changes: a result of reduced responses to standard tones in rabbits. *Neuroreport* 7:413–416
- Ruusuvirta T, Penttonen M, Korhonen T (1998) Auditory cortical event-related potentials to pitch deviances in rats. *Neurosci Lett* 248:45–48
- Ruusuvirta T, Astikainen P, Wikgren J, Nokia M (2010) Hippocampus responds to auditory change in rabbits. *Neuroscience* 170:232–237
- Ruusuvirta T, Lipponen A, Pellinen E, Penttonen M, Astikainen P (2013) Auditory cortical and hippocampal-system mismatch responses to duration deviants in urethane-anesthetized rats. *PLoS One* 8:e54624. doi:10.1371/journal.pone.0054624
- Saint Marie RL, Ostapoff EM, Morest DK, Wenthold RJ (1989) Glycine-immunoreactive projection of the cat lateral superior olive: possible role in midbrain ear dominance. *J Comp Neurol* 279:382–396
- Sanchez-Gonzalez MA, Garcia-Cabezas MA, Rico B, Cavada C (2005) The primate thalamus is a key target for brain dopamine. *J Neurosci* 25:6076–6083
- Sanes DH, Geary WA, Wooten GF, Rubel EW (1987) Quantitative distribution of the glycine receptor in the auditory brain stem of the gerbil. *J Neurosci* 7:3793–3802
- Sato K, Kiyama H, Park HT, Tohyama M (1993) AMPA, KA and NMDA receptors are expressed in the rat DRG neurones. *Neuroreport* 4:1263–1265
- Schofield BR (2010) Projections from auditory cortex to midbrain cholinergic neurons that project to the inferior colliculus. *Neuroscience* 166:231–240
- Schofield BR, Motts SD, Mellott JG (2011) Cholinergic cells of the pontomesencephalic tegmentum: connections with auditory structures from cochlear nucleus to cortex. *Hear Res* 279:85–95
- Schröger E, Wolff C (1996) Mismatch response of the human brain to changes in sound localization. *Neuroreport* 7:3005–3008
- Shigemoto R, Nomura S, Ohishi H, Sugihara H, Nakanishi S, Mizuno N (1993) Immunohistochemical localization of a metabotropic glutamate receptor, mGluR5, in the rat brain. *Neurosci Lett* 163:53–57
- Shinonaga Y, Takada M, OgawaMeguro R, Ikai Y, Mizuno N (1992) Direct projections from the globus pallidus to the midbrain and pons in the cat. *Neurosci Lett* 135:179–183
- Shinonaga Y, Takada M, Mizuno N (1994) Direct projections from the non-laminated divisions of the medial geniculate nucleus to the temporal polar cortex and amygdala in the cat. *J Comp Neurol* 340:405–426
- Shiramatsu TI, Kanzaki R, Takahashi H (2013) Cortical mapping of mismatch negativity with deviance detection property in rat. *PLoS One* 8:e82663. doi:10.1371/journal.pone.0082663
- Shore SE (2008) Auditory/somatosensory interactions. In: Adelman G, Smith BH (eds) *The new encyclopedia of neurosciences*. Elsevier Science, Amsterdam
- Siegel SJ, Connolly P, Liang Y, Lenox RH, Gur RE, Bilker WB, Kanes SJ, Turetsky BI (2003) Effects of strain, novelty, and NMDA blockade on auditory-evoked potentials in mice. *Neuropsychopharmacology* 28:675–682
- Slabu L, Escera C, Grimm S, Costa-Faidella J (2010) Early change detection in humans as revealed by auditory brainstem and middle-latency evoked potentials. *Eur J Neurosci* 32:859–865
- Slabu L, Grimm S, Escera C (2012) Novelty detection in the human auditory brainstem. *J Neurosci* 32:1447–452
- Smith PH, Bartlett EL, Kowalkowski A (2007) Cortical and collicular inputs to cells in the rat paralamina thalamic nuclei adjacent to the medial geniculate body. *J Neurophysiol* 98:681–695
- Stebbing KA, Lesicko AM, Llano DA (2014) The auditory corticocollicular system: molecular and circuit-level considerations. *Hear Res* 314:51–59
- Stein BE, Meredith MA (1993) *The merging of the senses*. MIT Press, Cambridge
- Stein BE, Stanford TR (2008) Multisensory integration: current issues from the perspective of the single neuron. *Nat Rev Neurosci* 9:255–266
- Stein BE, Wallace MT (1996) Comparisons of cross-modality integration in midbrain and cortex. *Prog Brain Res* 112:289–299
- Swanson LW, Hartman BK (1975) The central adrenergic system. An immunofluorescence study of the location of cell bodies and their efferent connections in the rat utilizing dopamine-beta-hydroxylase as a marker. *J Comp Neurol* 163:467–505
- Taaseh N, Yaron A, Nelken I (2011) Stimulus-specific adaptation and deviance detection in the rat auditory cortex. *PLoS One* 6:e23369. doi:10.1371/journal.pone.0023369
- Tardif E, Chiry O, Probst A, Magistretti PJ, Clarke S (2003) Patterns of calcium-binding proteins in human inferior colliculus: identification of subdivisions and evidence for putative parallel systems. *Neuroscience* 116:1111–1121
- Tebecis AK (1970) Effects of monoamines and amino acids on medial geniculate neurones of the cat. *Neuropharmacology* 9:381–390
- Tebecis AK (1972) Cholinergic and non-cholinergic transmission in the medial geniculate nucleus of the cat. *J Physiol* 226:153–172
- Tepper JM, Martin LP, Anderson DR (1995) GABA<sub>A</sub> receptor mediated inhibition of rat substantia nigra dopaminergic neurons by pars reticulata projection neurons. *J Neurosci* 15:3092–3103
- Tong L, Altschuler RA, Holt AG (2005) Tyrosine hydroxylase in rat auditory midbrain: distribution and changes following deafness. *Hear Res* 206:28–41
- Tongjaroenbuangam W, Jongkamonwivat N, Phansuwan-Pujito P, Casalotti SO, Forge A, Dodson H, Govitrapong P (2006) Relationship of opioid receptors with GABAergic neurons in the rat inferior colliculus. *Eur J Neurosci* 24:1987–1994
- Trattner B, Berner S, Grothe B, Kunz L (2013) Depolarization-induced suppression of a glycinergic synapse in the superior olivary complex by endocannabinoids. *J Neurochem* 127:78–90
- Ulanovsky N, Las L, Nelken I (2003) Processing of low-probability sounds by cortical neurons. *Nat Neurosci* 6:391–398
- Ulanovsky N, Las L, Farkas D, Nelken I (2004) Multiple time scales of adaptation in auditory cortex neurons. *J Neurosci* 24:10440–10453
- Umbricht D, Vyssotki D, Latanov A, Nitsch R, Lipp HP (2005) Deviance-related electrophysiological activity in mice: is there mismatch negativity in mice? *Clin Neurophysiol* 116:353–363
- Varela C (2014) Thalamic neuromodulation and its implications for executive networks. *Front Neural Circuits* 8:69. doi:10.3389/fncir.2014.00069

- Varela C, Sherman SM (2007) Differences in response to muscarinic activation between first and higher order thalamic relays. *J Neurophysiol* 98:3538–3547
- Varela C, Sherman SM (2009) Differences in response to serotonergic activation between first and higher order thalamic nuclei. *Cereb Cortex* 19:1776–1786
- Vater M, Braun K (1994) Parvalbumin, calbindin D-28 k, and calretinin immunoreactivity in the ascending auditory pathway of horseshoe bats. *J Comp Neurol* 341:534–558
- Venecia RK de, Smelser CB, Lossman SD, McMullen NT (1995) Complementary expression of parvalbumin and calbindin D-28 k delineates subdivisions of the rabbit medial geniculate body. *J Comp Neurol* 359:595–612
- Vertes RP, Linley SB, Hoover WB (2010) Pattern of distribution of serotonergic fibers to the thalamus of the rat. *Brain Struct Funct* 215:1–28
- Wenstrup JJ (2005) The tectothalamic system. In: Winer JA, Schreiner CE (eds) *The inferior colliculus*. Springer, New York, pp 69–131
- Westerman LA, Smith RL (1985) Rapid adaptation depends on the characteristic frequency of auditory nerve fibers. *Hear Res* 17:197–198
- Wilson RI, Nicoll RA (2002) Endocannabinoid signaling in the brain. *Science* 296:678–682
- Wilson RI, Kunos G, Nicoll RA (2001) Presynaptic specificity of endocannabinoid signaling in the hippocampus. *Neuron* 31:453–462
- Winer JA (1992) The functional architecture of the medial geniculate body and the primary auditory cortex. In: Webster DB, Popper AN, Fay RR (eds) *Springer handbook of auditory research, vol 1. The mammalian auditory pathway: neuroanatomy*. Springer, New York, pp 222–409
- Winer JA, Larue DT (1996) Evolution of GABAergic circuitry in the mammalian medial geniculate body. *Proc Natl Acad Sci U S A* 93:3083–3087
- Winer JA, Saint Marie RL, Larue DT, Oliver DL (1996) GABAergic feedforward projections from the inferior colliculus to the medial geniculate body. *Proc Natl Acad Sci U S A* 93:8005–8010
- Winkler I, Denham SL, Nelken I (2009) Modeling the auditory scene: predictive regularity representations and perceptual objects. *Trends Cogn Sci* 13:532–540
- Wu C, Stefanescu RA, Martel DT, Shore SE (2014) Listening to another sense: somatosensory integration in the auditory system. *Cell Tissue Res*. doi:10.1007/s00441-014-2074-7
- Wynne B, Robertson D (1997) Somatostatin and substance P-like immunoreactivity in the auditory brainstem of the adult rat. *J Chem Neuroanat* 12:259–266
- Yamauchi K, Yamadori T (1982) Retinal projection to the inferior colliculus in the rat. *Acta Anat (Basel)* 114:355–360
- Yaron A, Hershenhoren I, Nelken I (2012) Sensitivity to complex statistical regularities in rat auditory cortex. *Neuron* 76:603–615
- Yasui Y, Nakano K, Kayahara T, Mizuno N (1991) Nondopaminergic projections from the substantia nigra pars lateralis to the inferior colliculus in the rat. *Brain Res* 559:139–144
- Yu XJ, Xu XX, He S, He J (2009) Change detection by thalamic reticular neurons. *Nat Neurosci* 12:1165–1170
- Zahar Y, Reches A, Gutfreund Y (2009) Multisensory enhancement in the optic tectum of the barn owl: spike count and spike timing. *J Neurophysiol* 101:2380–2394
- Zettl ML, Carr CE, O'Neill WE (1991) Calbindin-like immunoreactivity in the central auditory system of the mustached bat, *Pteronotus parnelli*. *J Comp Neurol* 313:1–16
- Zhao L, Liu Y, Shen L, Feng L, Hong B (2011) Stimulus-specific adaptation and its dynamics in the inferior colliculus of rat. *Neuroscience* 181:163–174
- Zhao Y, Tzounopoulos T (2011) Physiological activation of cholinergic inputs controls associative synaptic plasticity via modulation of endocannabinoid signaling. *J Neurosci* 31:3158–3168
- Zhao Y, Rubio ME, Tzounopoulos T (2009) Distinct functional and anatomical architecture of the endocannabinoid system in the auditory brainstem. *J Neurophysiol* 101:2434–2446