

Correction to: Ki67 labeling index: assessment and prognostic role in gastroenteropancreatic neuroendocrine neoplasms

Günter Klöppel¹ · Stefano La Rosa²

Published online: 26 December 2017
© Springer-Verlag GmbH Germany, part of Springer Nature 2017

Correction to: Virchows Arch (2017) <https://doi.org/10.1007/s00428-017-2258-0>

The authors of the above article have corrected the caption for Figure 3 – namely the second sentence – clarifying the information depicted within the picture correcting the Ki67 index percentage. Figure 3 and the corrected caption can be found below.

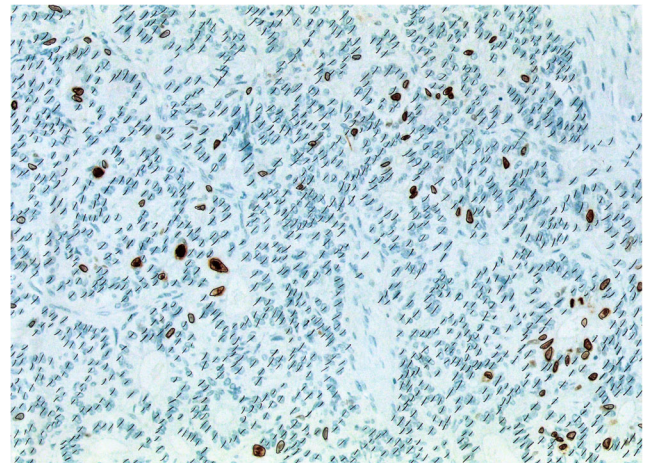


Fig. 3. Precise assessment of the Ki67 index is achieved by manually counting unlabelled and labelled nuclei on a camera-captured, printed image. In this picture 81 Ki67-labeled cells were counted and then divided by a total of 1581 cells, resulting in a Ki67 index of 5.1%

The online version of the original article can be found at <https://doi.org/10.1007/s00428-017-2258-0>.

✉ Günter Klöppel
guenter.kloepfel@tum.de

Stefano La Rosa
stefano.larosa@chuv.ch

¹ Institute of Pathology, Consultation Center for Pancreatic and Endocrine Tumors, Technical University of Munich, Trogerstr. 18, 81675 Munich, Germany

² Service of Clinical Pathology, Institute of Pathology, Lausanne University Hospital, Lausanne, Switzerland