



Poly I:C Exacerbates Airway Inflammation and Remodeling in Cigarette Smoke-Exposed Mice

Xiaofeng Mei^{1,2} · Ruilong Lu^{1,2} · Lili Cui^{1,2} · Yange Tian^{1,2,4} · Peng Zhao^{1,2,3,4} · Jiansheng Li^{1,2,3}

Received: 24 July 2022 / Accepted: 22 September 2022 / Published online: 21 October 2022
© The Author(s) 2022

Abstract

Background Chronic obstructive pulmonary disease (COPD) is a chronic respiratory disorder characterized by chronic inflammation and airway remodeling. Cigarette smoke (CS) and respiratory viruses are major causes of COPD development and exacerbation, but the mechanisms of these compounding factors on inflammation and pathological changes in airway structure still need further investigation.

Purpose This work aimed to investigate the effects and mechanisms of Poly I:C on pathological changes in CS-induced COPD mice, such as airway inflammation and remodeling.

Methods From 1 to 8 weeks, the mice were exposed to CS, Poly I:C, or a combination of both. To compare the pathological changes among different groups over time, the mice were sacrificed at week 4, 8, 16, and 24, then the lungs were harvested to measure pulmonary pathology, inflammatory cytokines, and airway remodeling.

Results Our data revealed that the fundamental characteristics of COPD, such as pulmonary pathological damage, the release of inflammatory mediators, and the remodeling of airway walls, were observed at week 8 in CS-exposed mice and these pathological changes persisted to week 16. Compared with the CS group, the pathological changes, including decreased lung function, inflammatory cell infiltration, alveolar destruction, and airway wall thickening, were weaker in the Poly I:C group. These pathological changes were observed at week 8 and persisted to week 16 in Poly I:C-induced mice. Furthermore, Poly I:C exacerbated lung tissue damage in CS-induced COPD mice. The decreased lung function, airway inflammation and remodeling were observed in the combined group at week 4, and these pathological changes persisted to week 24. Our research indicated that Poly I:C enhanced the expression of p-P38, p-JNK and p-NF- κ B in CS-exposed mice.

Conclusion Poly I:C could promote airway inflammation and remodeling in CS-induced COPD mice probably by NF- κ B and MAPK signaling.

Keywords Airway inflammation · Airway remodeling · Poly I:C · Cigarette smoke

✉ Jiansheng Li
li_js8@163.com

¹ Henan Key Laboratory of Chinese Medicine for Respiratory Disease, Henan University of Chinese Medicine, Zhengzhou 450046, Henan Province, China

² Collaborative Innovation Center for Chinese Medicine and Respiratory Diseases Co-constructed by Henan Province & Education Ministry of P.R. China, Zhengzhou 450046, Henan Province, China

³ Department of Respiratory Diseases, The First Affiliated Hospital of Henan University of Chinese Medicine, Zhengzhou 450000, China

⁴ Academy of Chinese Medical Sciences, Henan University of Chinese Medicine, Zhengzhou 450000, China

Introduction

Chronic obstructive pulmonary disease (COPD) is a frequent and complex respiratory disease that incurs a substantial economic and social burden worldwide. It is usually characterized by irreversible airflow limitation and persistent inflammation [1]. The mortality of COPD is increasing, and approximately 2.9 million individuals died from COPD in 2016 [2]. Thus, there is a critical need to understand the mechanisms of COPD and to identify novel molecular therapeutic targets.

Animal models are valuable tools in the investigation of pathological processes and related molecular mechanisms of COPD. Cigarette smoke (CS) is recognized as the most common risk factor for the onset and progression of COPD

[3, 4]. Previous studies have shown that CS can increase peroxides in the airway, which leads to cell damage, causing the aggregation of immune cells and the release of inflammatory mediators [5, 6]. Chronic inflammation can cause goblet cell hyperplasia and squamous metaplasia in the airway epithelium, eventually resulting in airway remodeling. Pathogen infection, including *Streptococcus pneumoniae*, *Klebsiella pneumoniae* and respiratory syncytial virus, is the major reason for the ongoing progression and deterioration of COPD [7–9]. The respiratory viruses associated with COPD onset and deterioration include the respiratory syncytial virus, adenovirus, human rhinovirus, etc. [10–12]. Double-stranded RNA (dsRNA), the replication intermediates of the virus, can promote the production of pro-inflammatory cytokines, which ultimately results in COPD [13, 14]. The dsRNA analog Poly I:C has minimal toxicity and was used extensively to mimic virus infection [15]. Tracheal instillation of Poly I:C enhanced airway inflammation and remodeling in asthma rats [16]. However, the effect and mechanism of Poly I:C in CS-exposed mice are still unknown.

In this study, we established three mouse models by CS exposure, Poly I:C nasal instillation, or a combination of both. Next, we compared the dynamic pathological evolution of three mouse models, including airway inflammation, pulmonary function, lung pathology, and airway remodeling. Furthermore, we explored the mechanisms of Poly I:C on airway inflammation and remodeling in CS-exposed mice.

Materials and Methods

Chemicals and Animals

Ninety six mice (weight: 20 ± 2 g, certificate No. 110011200106861568) were obtained from the Beijing Weitong Lihua Animal Center. This study was approved by the Ethics Committee of Laboratory Animal Welfare of Henan University of Chinese Medicine (DWLL202003210).

The Mouse IL-6 ELISA Set (555,240) was purchased from BD Bioscience (New Jersey, USA). Antibodies for P38 MAPK (8690), Phospho-P38 MAPK (4511), SAPK/JNK (9252), Phospho-SAPK/JNK (4668S), Phospho-NF- κ B^{Ser536} (3033S), and NF- κ B (8242S) were obtained from Cell Signaling Technology Co., Ltd. (Boston, USA).

Animal Models

From the 1st to 8th week, the CS group mice were exposed to CS (40 min each time, twice a day); the Poly I:C group mice were treated with intranasal instillation of Poly I:C (25 μ g/20 μ L, once every 7 days for 8 weeks); the combined group mice were treated with intranasal instillation of Poly I:C and CS exposure. To observe the long-term effects,

we observed the pathological changes of mice to week 24, and the mice were sacrificed at the 4th, 8th, 16th, and 24th weeks, respectively.

Pulmonary Function Analysis

We used unrestrained pulmonary function plethysmography to measure the peak expiratory flow (PEF) and enhanced pause (Penh) at week 0, 4, 8, 12, 16, 20, and 24 weeks, respectively [17].

Pulmonary Histopathology

We used HE and Masson staining to evaluate the lung tissue damage.

ELISA

The levels of IL-1 β , IL-6, and MMP-2 in the lung tissue were measured by the mouse ELISA kit.

Immunohistochemistry

Collagen I and III were assessed through immunohistochemical staining. The captured images were digitalized by calculating the integrated optical density (IOD) with Image-Pro Plus 6.0 software.

Immunofluorescence Staining

The tissue slices were blocked with 3% BSA for 30 min. Then anti-rabbit antibodies against TGF- β 1 and α -SMA (1:100, proteintech) were added at 4 °C overnight. Moreover, the tissue slices were treated with fluorescein-conjugated secondary antibody (1:1000, proteintech) in a dark place for 1 h. Finally, the laser confocal microscope was used for detection (LSM700, Carl Zeiss, Germany).

Western Blot

First, we use the BCA method for protein quantification. Second, the levels of p-P38, p-JNK, and p-NF- κ B were assessed through Western blot. Anti-rabbit antibodies against p-P38, p-JNK, and p-NF- κ B (CST, 1:1000) were added at 4 °C overnight. On the next day, the blots were incubated with the secondary antibody (1:5000, proteintech) at RT for 1 h.

Statistical Analysis

Data were analyzed by SPSS 23.0. One-way ANOVA was used for statistical analysis. Data were presented as mean \pm SEM. $n = 6$, * $P < 0.05$, ** $P < 0.01$ vs. control group;

[#] $P < 0.05$, ^{##} $P < 0.01$ vs. CS group; ^Δ $P < 0.05$, ^{ΔΔ} $P < 0.01$ vs. poly I:C group.

Result

Decreased Pulmonary Function Induced by CS and Poly I:C

PEF and Penh are significant indicators for reflecting airway obstruction in COPD [18]. PEF decreased and Penh increased with time in the three mouse model groups, and the changes were more obvious in the combined group (Fig. 1). In addition, these changes in pulmonary function were observed at week 8 in the CS and Poly I:C groups, whereas at week 4 in the combined group. After modeling, the trend persisted from week 8 to 24 only in the combined group.

Pathological Changes of the Lung Tissue Induced by CS and Poly I:C

Significant pathological changes, such as alveolar wall thickening, alveolar rupture and fusion, were observed in COPD mouse models [19]. Inflammatory cell infiltration and alveolar destruction were observed in the combined group at week 4 (Fig. 2A). From week 8 to 24, we observed massive inflammatory infiltration, thickened alveolar walls, alveolar rupture, and fusion in the lungs of mice in the three mouse model groups. However, the above pathological changes were more pronounced in the combined group than in the other two experimental groups. In addition, the airway wall thickness and area were increased in CS and CS + Poly I:C group from week 8 to 24 (Fig. 2B).

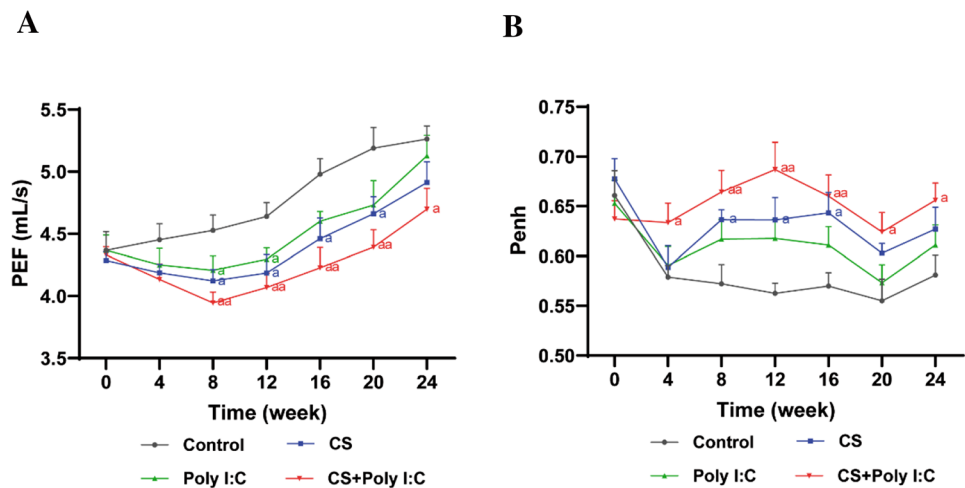
Poly I:C Exacerbated Inflammation and Immune Response in CS-induced Mice

Chronic inflammation and immune imbalance are critical factors in lung tissue damage, abnormal lung function, and airflow limitation of COPD. After CS exposure, bacterial or viral infection, the numbers of neutrophils, macrophages, and T lymphocytes were increased, and subsequently activated inflammatory cells released multiple inflammatory mediators which promoted inflammatory response. The expression levels of IL-6 and IL-1 β were significantly increased in the combined group from week 4 to 24, whereas in the CS group from week 8 to 24 and in the Poly I:C group from week 8 to 16 (Fig. 3A and B). Inflammatory cells are mainly composed of neutrophils, macrophages, and T lymphocytes. In this study, we found that CS exposure or viral infection alone caused the recruitment of immune cells, as demonstrated by the increased Ly6G, CD3⁺CD8⁺, and decreased CD3⁺CD4⁺ (Fig. 3C and D). NLRP3 was a major class of intracellular pattern recognition receptors, which functioned in host immune defense by mediating the production of IL-1 β [20]. CS exposure or viral infection alone also activated the NLRP3 inflammasome and caspase 1 (Fig. 3C). Here, all the changes above were more pronounced in the combined group. The data indicated that Poly I:C exacerbated inflammation and immune response in CS-induced mice.

Poly I:C Aggravated Airway Remodeling in CS-induced Mice

Chronic inflammation in the airway can lead to mucin secretion, smooth muscle hyperplasia, collagen deposition, and angiogenesis that may eventually cause airway remodeling. The increased levels of collagen, α -SMA and TGF- β 1 were observed in the three treatment groups from

Fig. 1 Effects of CS and Poly I:C on pulmonary function in mice at different time points. **A** The changing trend of peak expiratory flow (PEF) in each group. **B** The changing trend of enhanced pause (Penh) in each group. $n = 6$, ^a $P < 0.05$, ^{aa} $P < 0.01$ vs. control group



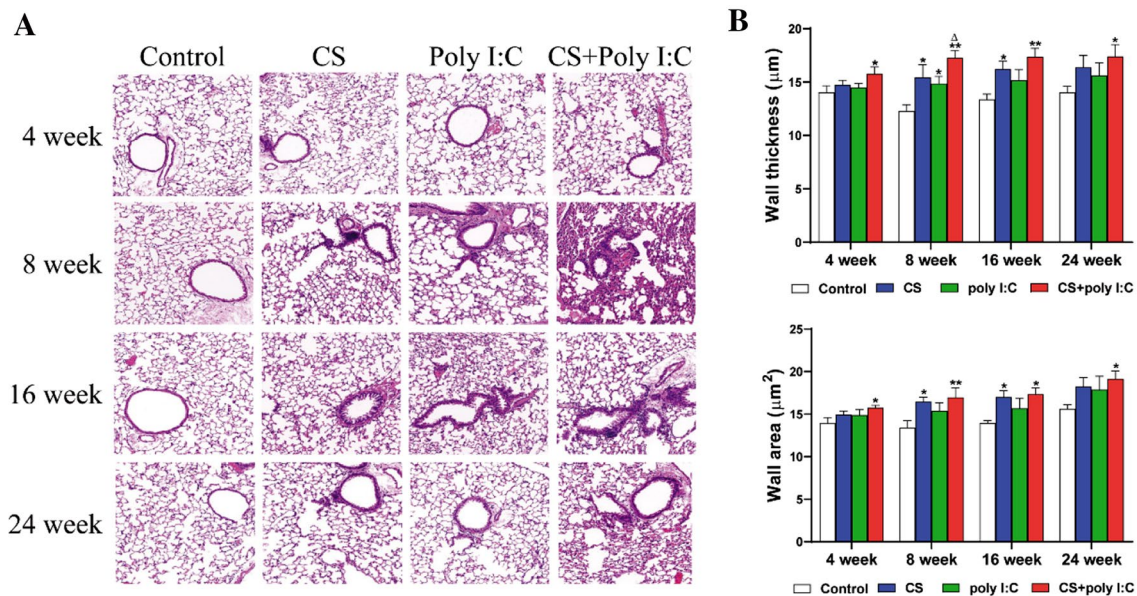


Fig. 2 Effects of CS and Poly I:C on pulmonary pathology in mice at different time points. **A** H&E staining for lung tissue from different groups of mice (magnification, $\times 200$). **B** The pulmonary injury was

quantified by the airway wall thickness and airway wall area. $n=6$, * $P < 0.05$ vs. control group, ** $P < 0.01$ vs. control group; $^{\Delta}P < 0.05$ vs. poly I:C group

week 8, and these increases were more obvious in the combined group (Fig. 4A, C and D). In addition, MMPs play essential roles in the degradation of extracellular matrix proteins, such as collagen and elastin. As shown in Fig. 4B, the levels of MMP-2 in the lungs were upregulated in the three treatment groups from week 8 to week 24. Altogether, these increases were more marked in the combined group which implied that Poly I:C aggravated airway remodeling in CS-induced mice.

Poly I:C Might Enhance the Activation of NF- κ B and MAPK Signaling in CS-induced Mice

The NF- κ B and MAPK signaling has been demonstrated to be involved in the regulation of inflammation and airway remodeling [21, 22]. Virus can activate the TLR3 to upregulate NF- κ B and MAPK signaling, which eventually results in airway inflammation [23, 24]. As illustrated in Fig. 5, CS exposure triggered the activation of NF- κ B and MAPK. Compared to the CS or Poly I:C group, the protein levels of p-P38, p-JNK, and p-NF- κ B were significantly increased in the combined group. These results indicated that Poly I:C might enhance the activation of NF- κ B and MAPK in CS-induced mice.

Discussion

In this study, mouse models were established by CS exposure, Poly I:C infection, and a combination of both. Our results revealed that CS + Poly I:C resulted in a shorter time to establish an inflammatory response and observe lung function changes. In addition, Poly I:C exacerbated the inflammatory responses and airway remodeling in CS-induced COPD mice over time, which might be associated with NF- κ B and MAPK signaling.

CS and virus are significant risk factors for the progression of COPD, which lead to protease–antiprotease imbalance, oxidative stress, and inflammation in the airways [25–27]. The immune response plays an essential role in the pathogenesis of COPD. Inflammatory cells, such as neutrophils, lymphocytes, and macrophages, participate in airway inflammation of COPD. Long-term repeated inflammation stimulation induces airway mucus hypersecretion and smooth muscle hyperplasia, which ultimately lead to lung parenchyma damage and airway remodeling [28–30]. Previous studies used CS exposure for 24 weeks to establish a stable COPD model, which displayed clinicopathological features, such as decreased lung function, chronic airway inflammation, and alveolar damage [31]. However, from a clinical standpoint, the development and progression of COPD is a complex process. For example, the impaired airway epithelial function caused by CS can increase the chance of viral infection [32]. Mebratu et al. have

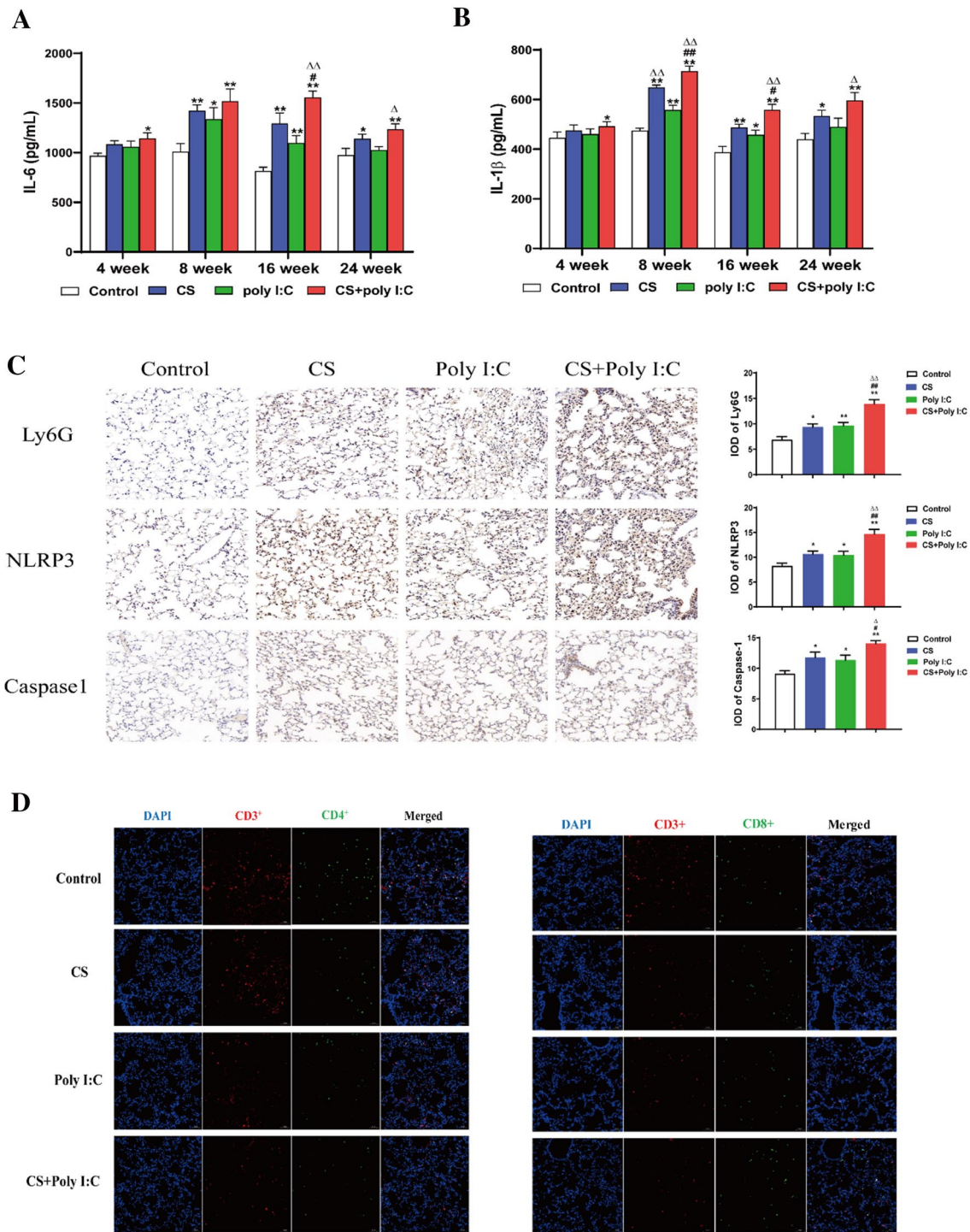
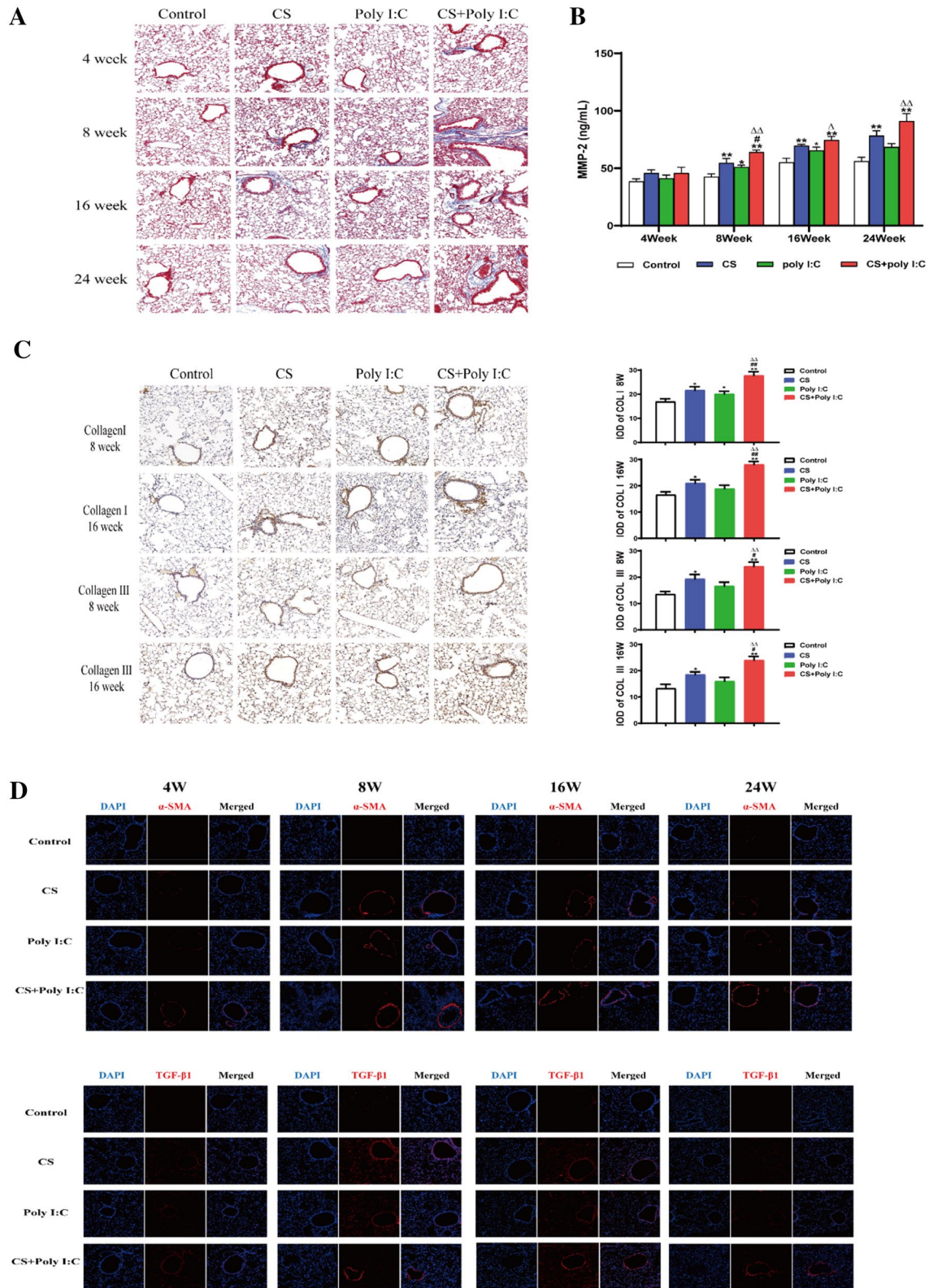


Fig. 3 Poly I:C exacerbated inflammation and immune response in CS-induced mice. The expression of IL-6 (A) and IL-1β (B) in lung tissues from week 4 to 24. C The expression of Ly6G, NLRP3, and caspase 1 in lung tissues at week 8 was measured by immunohistochemical staining. D The expression of CD3+ CD4+ and

CD3+ CD8+ in lung tissues at week 8 was measured by immunofluorescence staining. *n* = 6, **P* < 0.05 vs. control group, ***P* < 0.01 vs. control group; #*P* < 0.05 vs. CS group, ##*P* < 0.01 vs. CS group; Δ*P* < 0.05 vs. poly I:C group, ΔΔ*P* < 0.01 vs. poly I:C group

demonstrated that respiratory syncytial viruses enhanced inflammation and emphysema in CS-induced mice [13]. Consistent with their results, our findings suggested that

Poly I:C augmented inflammation in CS-exposed mice. Furthermore, the present results showed that Poly I:C also enhanced CS-induced airway remodeling. In addition,



we continued to compare the pathological characteristics of mouse models for additional 16 weeks. The results demonstrated that airway inflammation and remodeling in

CS + Poly I:C group were observed at week 4 and lasted up to week 24; whereas, these changes in CS or Poly I:C group were observed at week 8 and only lasted up

Fig. 4 Poly I:C aggravated airway remodeling in CS-induced mice. **A** Masson staining for lung tissue in different groups of mice from week 4 to 24 (magnification, $\times 200$). **B** The levels of MMP-2 in lung tissues from week 4 to 24. **C** Immunohistochemical staining of collagen I and collagen III at week 8 and 16 (magnification, $\times 200$). The captured images were digitalized by calculating the integrated optical density (IOD). **D** Expressions of α -SMA and TGF- β 1 were detected by immunofluorescence from week 4 to 24 (magnification, $\times 200$). $n=6$, * $P<0.05$ vs. control group, ** $P<0.01$ vs. control group; # $P<0.05$ vs. CS group, ## $P<0.01$ vs. CS group; $\Delta\Delta P<0.01$ vs. poly I:C group

to week 16. This phenomenon indicated that smoking cessation and avoidance of viral infections might relieve the symptoms to a certain extent, but not restore the normal function of the lung once a certain degree of lung injury is reached.

One of the reasons for the existence of persistent changes in the combined exposure model was that chronic CS exposure and viral infection could cause the decompensation in epithelial damage and repair, leading to excessive proliferation of basal cells, shortened cilia, mucus-cell hyperplasia, and increased collagen deposition, which eventually contributed to airway remodeling and irreversible structural damage. Another reason was associated with disorder of the lung microbiome. It has been shown that the progression of COPD was associated with alterations in the microbiota, such as the increased Proteobacteria and Actinobacteria [33]. The immune system was a critical mediator of microbe-host interactions [34]. Persistent CS exposure

and viral infection could disrupt the innate defense system and attenuate the ability of the host to fight against pathogenic microorganisms [35]. In addition, the changes in the microbiome could signal through a variety of pathogen-recognition receptors on epithelial and immune cells to cause inflammation. Meanwhile, the inflammation could induce further impairment of the innate defense system, allowing the bacterial microbiome to persist and proliferate and eventually forming vicious cycle [36].

Previous studies have shown that the virus can initiate pro-inflammatory responses by activating TLR3 signaling, resulting in airway inflammation and hyper-responsiveness [37, 38]. The activation of TLR3 can activate the NF- κ B and MAPK, which are central transcriptional regulators of the airway inflammatory response [39, 40]. Once activated, NF- κ B and MAPK promote the production of inflammatory mediators, which lead to airway smooth muscle thickening, goblet cell hyperplasia, and ultimately result in airway remodeling [41, 42]. Consistent with these results, our results demonstrated that Poly I:C might upregulate NF- κ B and MAPK signaling to promote CS-induced airway inflammation and remodeling.

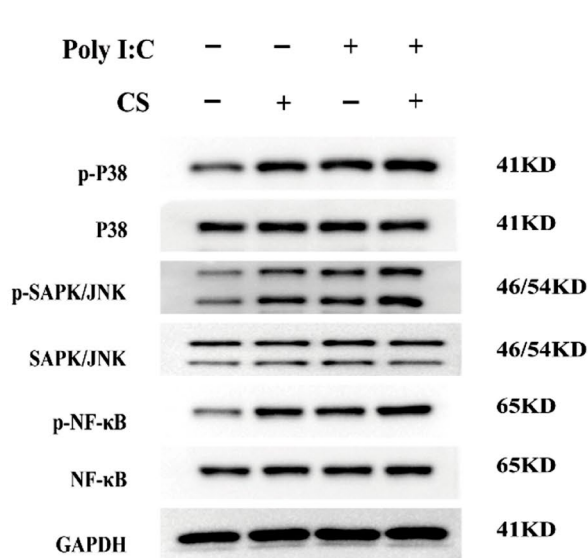
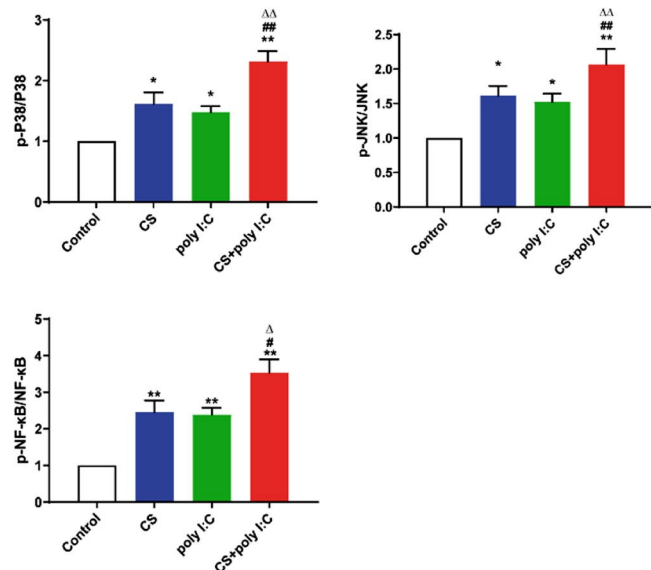


Fig. 5 Effects of Poly I:C on NF- κ B and MAPK signaling. Expressions of p-NF- κ B, p-P38, and p-JNK in lung tissues at week 8 were detected by WB. $n=3$, * $P<0.05$ vs. control group, ** $P<0.01$



vs. control group; # $P<0.05$ vs. CS group, ## $P<0.01$ vs. CS group; $\Delta P<0.05$ vs. poly I:C group, $\Delta\Delta P<0.01$ vs. poly I:C group

Conclusion

Our studies indicated that Poly I:C might promote airway inflammation and airway remodeling in CS-exposed mice by NF- κ B and MAPK signaling. The mice showed typical pathological characteristics of COPD patients in CS + Poly I:C group, and the pathological damage appeared to occur earlier and last longer.

Acknowledgements This study was supported by National Natural Science Foundation of China (Grant No. 81973822), Qihuang Chief scientist of the preservation and innovative development of TCM Talent Project (Grant No. 2021-7) and the Qihuang Scholars Award of The State TCM Academic Leader Program (Grant No. 2018-284), National Key Research and Development Program of China (Grant No. 2018YFC1704806).

Author Contributions XM, RL, and LC contributed to data curation. YT and PZ contributed to formal analysis and data curation. JL contributed to conceptualization and funding acquisition.

Funding This work was supported by National Natural Science Foundation of China, Grant No. 81973822.

Declarations

Competing Interests The authors declare that they have no known competing financial interests or personal relationships that could have appeared to influence the work reported in this paper.

Open Access This article is licensed under a Creative Commons Attribution 4.0 International License, which permits use, sharing, adaptation, distribution and reproduction in any medium or format, as long as you give appropriate credit to the original author(s) and the source, provide a link to the Creative Commons licence, and indicate if changes were made. The images or other third party material in this article are included in the article's Creative Commons licence, unless indicated otherwise in a credit line to the material. If material is not included in the article's Creative Commons licence and your intended use is not permitted by statutory regulation or exceeds the permitted use, you will need to obtain permission directly from the copyright holder. To view a copy of this licence, visit <http://creativecommons.org/licenses/by/4.0/>.

References

- Ponce-Gallegos MA, Perez-Rubio G, Garcia-Carmona A, Garcia-Gomez J, Hernandez-Zenteno R, Ramirez-Venegas A, Falfan-Valencia R (2019) Haplotype in *serpina1* (AAT) is associated with reduced risk for COPD in a Mexican mestizo population. *Int J Mol Sci* 21(1):195. <https://doi.org/10.3390/ijms21010195>
- Naghavi M, Abajobir AA, Abbafati C, Abbas KM, Abd-Allah F, Abera SF, Aboyans V, Adetokunboh O, Afshin A, Agrawal A, Ahmadi A (2017) Global, regional, and national age-sex specific mortality for 264 causes of death, 1980–2016: a systematic analysis for the global burden of disease study 2016. *Lancet* 390(10100):1151–1210. [https://doi.org/10.1016/S0140-6736\(17\)32152-9](https://doi.org/10.1016/S0140-6736(17)32152-9)
- Gao L, Zeng N, Yuan Z, Wang T, Chen L, Yang D, Xu D, Wan C, Wen F, Shen Y (2021) Knockout of formyl peptide receptor-1 attenuates cigarette smoke-induced airway inflammation in mice. *Front Pharmacol* 12:632225. <https://doi.org/10.3389/fphar.2021.632225>
- Corsello T, Kudlicki AS, Garofalo RP, Casola A (2019) Cigarette smoke condensate exposure changes RNA content of extracellular vesicles released from small airway epithelial cells. *Cells* 8(12):1652. <https://doi.org/10.3390/cells8121652>
- Minagawa S, Lou J, Seed RI, Cormier A, Wu S, Cheng Y, Murray L, Tsui P, Connor J, Herbst R, Govaerts C, Barker T, Cambier S, Yanagisawa H, Goodsell A, Hashimoto M, Brand OJ, Cheng R, Ma R, Mcknelly KJ, Wen W, Hill A, Jablons D, Wolters P, Kitamura H, Araya J, Barczak AJ, Erle DJ, Reichardt LF, Marks JD, Baron JL, Nishimura SL (2014) Selective targeting of TGF- β activation to treat fibroinflammatory airway disease. *Sci Transl Med* 6(241):241r–279r. <https://doi.org/10.1126/scitranslmed.3008074>
- Voss M, Wonnemberg B, Honecker A, Kamyschnikov A, Herr C, Bischoff M, Tschernig T, Bals R, Beisswenger C (2015) Cigarette smoke-promoted acquisition of bacterial pathogens in the upper respiratory tract leads to enhanced inflammation in mice. *Respir Res* 16(1):41. <https://doi.org/10.1186/s12931-015-0204-8>
- Papi A, Bellettato CM, Braccioni F, Romagnoli M, Casolari P, Caramori G, Fabbri LM, Johnston SL (2006) Infections and airway inflammation in chronic obstructive pulmonary disease severe exacerbations. *Am J Respir Crit Care Med* 173(10):1114–1121. <https://doi.org/10.1164/rccm.200506-859OC>
- Ko FW, Chan KP, Hui DS, Goddard JR, Shaw JG, Reid DW, Yang IA (2016) Acute exacerbation of COPD. *Respirology* 21(7):1152–1165. <https://doi.org/10.1111/resp.12780>
- Leung JM, Tiew PY, Mac AM, Budden KF, Yong VF, Thomas SS, Pethe K, Hansbro PM, Chotirmall SH (2017) The role of acute and chronic respiratory colonization and infections in the pathogenesis of COPD. *Respirology* 22(4):634–650. <https://doi.org/10.1111/resp.13032>
- Falsey AR, Formica MA, Hennessey PA, Criddle MM, Sullender WM, Walsh EE (2006) Detection of respiratory syncytial virus in adults with chronic obstructive pulmonary disease. *Am J Respir Crit Care Med* 173(6):639–643. <https://doi.org/10.1164/rccm.200510-1681OC>
- Sethi S, Murphy TF (2008) Infection in the pathogenesis and course of chronic obstructive pulmonary disease. *N Engl J Med* 359(22):2355–2365. <https://doi.org/10.1056/NEJMra0800353>
- Linden D, Guo-Parke H, Coyle PV, Fairley D, McAuley DF, Taggart CC, Kidney J (2019) Respiratory viral infection: a potential “missing link” in the pathogenesis of COPD. *Eur Respir Rev* 28(151):180063. <https://doi.org/10.1183/16000617.0063-2018>
- Mebratu YA, Smith KR, Agga GE, Tesfaigzi Y (2016) Inflammation and emphysema in cigarette smoke-exposed mice when instilled with Poly (I:C) or infected with influenza A or respiratory syncytial viruses. *Respir Res* 17(1):75. <https://doi.org/10.1186/s12931-016-0392-x>
- Harris P, Sridhar S, Peng R, Phillips JE, Cohn RG, Burns L, Woods J, Ramanujam M, Loubeau M, Tyagi G, Allard J, Burczynski M, Ravindran P, Cheng D, Bitter H, Fine JS, Bauer CM, Stevenson CS (2013) Double-stranded RNA induces molecular and inflammatory signatures that are directly relevant to COPD. *Mucosal Immunol* 6(3):474–484. <https://doi.org/10.1038/mi.2012.86>
- Sadamatsu H, Takahashi K, Tashiro H, Kato G, Noguchi Y, Kurata K, Omura S, Kimura S, Sunazuka T, Sueoka-Aragane N (2020) The non-antibiotic macrolide EM900 attenuates HDM and Poly(I:C)-induced airway inflammation with inhibition of

- macrophages in a mouse model. *Inflamm Res* 69(1):139–151. <https://doi.org/10.1007/s00011-019-01302-3>
16. Takayama S, Tamaoka M, Takayama K, Okayasu K, Tsuchiya K, Miyazaki Y, Sumi Y, Martin JG, Inase N (2011) Synthetic double-stranded RNA enhances airway inflammation and remodelling in a rat model of asthma. *Immunology* 134(2):140–150. <https://doi.org/10.1111/j.1365-2567.2011.03473.x>
 17. Li Y, Li SY, Li JS, Deng L, Tian YG, Jiang SL, Wang Y, Wang YY (2012) A rat model for stable chronic obstructive pulmonary disease induced by cigarette smoke inhalation and repetitive bacterial infection. *Biol Pharm Bull* 35(10):1752–1760. <https://doi.org/10.1248/bpb.b12-00407>
 18. Shrine N, Guyatt AL, Erzurumluoglu AM, Jackson VE, Hobbs BD, Melbourne CA, Batini C, Fawcett KA, Song K, Sakornsakolpat P, Li X, Boxall R, Reeve NF, Obeidat M, Zhao JH, Wielscher M, Weiss S, Kentistou KA, Cook JP, Sun BB, Zhou J, Hui J, Karrasch S, Imboden M, Harris SE, Marten J, Enroth S, Kerr SM, Surakka I, Vitart V, Lehtimäki T, Allen RJ, Bakke PS, Beaty TH, Bleeker ER, Bosse Y, Brandsma CA, Chen Z, Crapo JD, Danesh J, Demeo DL, Dudbridge F, Ewert R, Gieger C, Gulsvik A, Hansell AL, Hao K, Hoffman JD, Hokanson JE, Homuth G, Joshi PK, Joubert P, Langenberg C, Li X, Li L, Lin K, Lind L, Locantore N, Luan J, Mahajan A, Maranville JC, Murray A, Nickle DC, Packer R, Parker MM, Paynton ML, Porteous DJ, Prokopenko D, Qiao D, Rawal R, Runz H, Sayers I, Sin DD, Smith BH, Soler AM, Sparrow D, Tal-Singer R, Timmers P, Van den Berge M, Whittaker JC, Woodruff PG, Yerges-Armstrong LM, Troyanskaya OG, Raitakari OT, Kahonen M, Polasek O, Gyllenstein U, Rudan I, Deary IJ, Probst-Hensch NM, Schulz H, James AL, Wilson JF, Stubbe B, Zeggini E, Jarvelin MR, Wareham N, Silverman EK, Hayward C, Morris AP, Butterworth AS, Scott RA, Walters RG, Meyers DA, Cho MH, Strachan DP, Hall IP, Tobin MD, Wain LV (2019) New genetic signals for lung function highlight pathways and chronic obstructive pulmonary disease associations across multiple ancestries. *Nat Genet* 51(3):481–493. <https://doi.org/10.1038/s41588-018-0321-7>
 19. Baarsma HA, Skronska-Wasek W, Mutze K, Ciolek F, Wagner DE, John-Schuster G, Heinzelmann K, Gunther A, Bracke KR, Dagouassat M, Boczkowski J, Brusselle GG, Smits R, Eickelberg O, Yildirim AO, Königshoff M (2017) Noncanonical WNT-5A signaling impairs endogenous lung repair in COPD. *J Exp Med* 214(1):143–163. <https://doi.org/10.1084/jem.20160675>
 20. Liu T, Zhou YT, Wang LQ, Li LY, Bao Q, Tian S, Chen MX, Chen HX, Cui J, Li CW (2019) Nod-like receptor family, pyrin domain containing 3 (NLRP3) contributes to inflammation, pyroptosis, and mucin production in human airway epithelium on rhinovirus infection. *J Allergy Clin Immunol* 144(3):777–787. <https://doi.org/10.1016/j.jaci.2019.05.006>
 21. Doherty T, Broide D (2007) Cytokines and growth factors in airway remodeling in asthma. *Curr Opin Immunol* 19(6):676–680. <https://doi.org/10.1016/j.coi.2007.07.017>
 22. Park SJ, Lee KS, Lee SJ, Kim SR, Park SY, Jeon MS, Lee HB, Lee YC (2012) L-2-oxothiazolidine-4-carboxylic acid or alpha-lipoic acid attenuates airway remodeling: involvement of nuclear factor- κ B (NF- κ B), nuclear factor erythroid 2p45-related factor-2 (Nrf2), and hypoxia-inducible factor (HIF). *Int J Mol Sci* 13(7):7915–7937. <https://doi.org/10.3390/ijms13077915>
 23. Yoshizumi M, Kimura H, Okayama Y, Nishina A, Noda M, Tsukagoshi H, Kozawa K, Kurabayashi M (2010) Relationships between cytokine profiles and signaling pathways (I κ B kinase and p38 MAPK) in parainfluenza virus-infected lung fibroblasts. *Front Microbiol* 1:124. <https://doi.org/10.3389/fmicb.2010.00124>
 24. de Oliveira AC, Yousif NM, Bhatia HS, Hermanek J, Huell M, Fiebich BL (2016) Poly(I:C) increases the expression of mpeg-1 and cox-2 in rat primary microglia. *J Neuroinflamm* 13:11. <https://doi.org/10.1186/s12974-015-0473-7>
 25. Vogelmeier CF, Criner GJ, Martinez FJ, Anzueto A, Barnes PJ, Bourbeau J, Celli BR, Chen R, Decramer M, Fabbri LM, Frith P, Halpin DM, Lopez VM, Nishimura M, Roche N, Rodriguez-Roisin R, Sin DD, Singh D, Stockley R, Vestbo J, Wedzicha JA, Agustí A (2017) Global strategy for the diagnosis, management, and prevention of chronic obstructive lung disease 2017 report. Gold executive summary. *Am J Respir Crit Care Med* 195(5):557–582. <https://doi.org/10.1164/rccm.201701-0218PP>
 26. Wang C, Zhou J, Wang J, Li S, Fukunaga A, Yodoi J, Tian H (2020) Progress in the mechanism and targeted drug therapy for COPD. *Signal Transduct Target Ther* 5(1):248. <https://doi.org/10.1038/s41392-020-00345-x>
 27. Agustí A, Hogg JC (2019) Update on the pathogenesis of chronic obstructive pulmonary disease. *N Engl J Med* 381(13):1248–1256. <https://doi.org/10.1056/NEJMra1900475>
 28. Hikichi M, Mizumura K, Maruoka S, Gon Y (2019) Pathogenesis of chronic obstructive pulmonary disease COPD induced by cigarette smoke. *J Thorac Dis* 11(Suppl 17):S2129–S2140. <https://doi.org/10.21037/jtd.2019.10.43>
 29. Pineiro-Hermida S, Martínez P, Blasco MA (2021) Short and dysfunctional telomeres protect from allergen-induced airway inflammation. *Aging Cell* 20(5):e13352. <https://doi.org/10.1111/acel.13352>
 30. Lee G, Jung KH, Ji ES, Bae H (2017) Pyranopyran-1,8-dione, an active compound from vitices fructus, attenuates cigarette-smoke induced lung inflammation in mice. *Int J Mol Sci* 18(7):1602. <https://doi.org/10.3390/ijms18071602>
 31. Wang G, Mohammadtursun N, Sun J, Lv Y, Jin H, Lin J, Kong L, Zhao Z, Zhang H, Dong J (2018) Establishment and evaluation of a rat model of sidestream cigarette smoke-induced chronic obstructive pulmonary disease. *Front Physiol* 9:58. <https://doi.org/10.3389/fphys.2018.00058>
 32. Eddleston J, Lee RU, Doerner AM, Herschbach J, Zuraw BL (2011) Cigarette smoke decreases innate responses of epithelial cells to rhinovirus infection. *Am J Respir Cell Mol Biol* 44(1):118–126. <https://doi.org/10.1165/rcmb.2009-0266OC>
 33. Mammen MJ, Sethi S (2016) COPD and the microbiome. *Respirology* 21(4):590–599. <https://doi.org/10.1111/resp.12732>
 34. Chotirmall SH, Gellatly SL, Budden KF, Mac AM, Shukla SD, Wood DL, Hugenholtz P, Pethe K, Hansbro PM (2017) Microbiomes in respiratory health and disease: an Asia-pacific perspective. *Respirology* 22(2):240–250. <https://doi.org/10.1111/resp.12971>
 35. Comer DM, Kidney JC, Ennis M, Elborn JS (2013) Airway epithelial cell apoptosis and inflammation in COPD, smokers and nonsmokers. *Eur Respir J* 41(5):1058–1067. <https://doi.org/10.1183/09031936.00063112>
 36. Budden KF, Shukla SD, Rehman SF, Bowerman KL, Keely S, Hugenholtz P, Armstrong-James D, Adcock IM, Chotirmall SH, Chung KF, Hansbro PM (2019) Functional effects of the microbiota in chronic respiratory disease. *Lancet Respir Med* 7(10):907–920. [https://doi.org/10.1016/S2213-2600\(18\)30510-1](https://doi.org/10.1016/S2213-2600(18)30510-1)
 37. Lin TH, Cheng CC, Su HH, Huang NC, Chen JJ, Kang HY, Chang TH (2016) Lipopolysaccharide attenuates induction of proallergic cytokines, thymic stromal lymphopoietin, and interleukin 33 in respiratory epithelial cells stimulated with Poly I:C and human parechovirus. *Front Immunol* 7:440. <https://doi.org/10.3389/fimmu.2016.00440>
 38. Wang Q, Miller DJ, Bowman ER, Nagarkar DR, Schneider D, Zhao Y, Linn MJ, Goldsmith AM, Bentley JK, Sajjan US, Hershenson MB (2011) MDA5 and TLR3 initiate

- pro-inflammatory signaling pathways leading to rhinovirus-induced airways inflammation and hyperresponsiveness. *PLoS Pathog* 7(5):e1002070. <https://doi.org/10.1371/journal.ppat.1002070>
39. Perales-Linares R, Navas-Martin S (2013) Toll-like receptor 3 in viral pathogenesis: friend or foe? *Immunology* 140(2):153–167. <https://doi.org/10.1111/imm.12143>
40. Liu Y, Mo CF, Luo XY, Li H, Guo HJ, Sun H, Hu S, Li LM, Wang YT, Yang SX, Chang S, Zou Q (2020) Activation of toll-like receptor 3 induces interleukin-1 receptor antagonist expression by activating the interferon regulatory factor 3. *J Innate Immun* 12(4):304–320. <https://doi.org/10.1159/000504321>
41. Shurin MR, Yanamala N, Kisin ER, Tkach AV, Shurin GV, Murray AR, Leonard HD, Reynolds JS, Gutkin DW, Star A, Fadeel B, Savolainen K, Kagan VE, Shvedova AA (2014) Graphene oxide attenuates Th2-type immune responses, but augments airway remodeling and hyperresponsiveness in a murine model of asthma. *ACS Nano* 8(6):5585–5599. <https://doi.org/10.1021/nm406454u>
42. Pantano C, Ather JL, Alcorn JF, Poynter ME, Brown AL, Guala AS, Beuschel SL, Allen GB, Whittaker LA, Bevelander M, Irvin CG, Janssen-Heininger YM (2008) Nuclear factor-kappaB activation in airway epithelium induces inflammation and hyperresponsiveness. *Am J Respir Crit Care Med* 177(9):959–969. <https://doi.org/10.1164/rccm.200707-1096OC>

Publisher's Note Springer Nature remains neutral with regard to jurisdictional claims in published maps and institutional affiliations.